

# Kansas Pavilions

**Mission: Exceed guest, citizen and partners' expectations of entertainment, educational and commercial opportunities in a safe, pleasant and professionally operated facility.**

**Ron Holt**  
**Assistant County Manager**

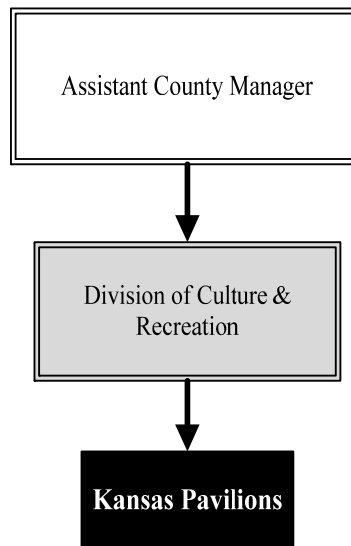
525 North Main, Suite 343  
 Wichita, KS 67203  
 316.660.9393  
[rholt@sedgwick.gov](mailto:rholt@sedgwick.gov)

## Overview

The Kansas Coliseum Complex, which included the Britt Brown Arena and Kansas Pavilions, opened in 1977. For more than 30 years it hosted a variety of events. However, as needs changed, Sedgwick County required an updated arena facility located in the heart of the County.

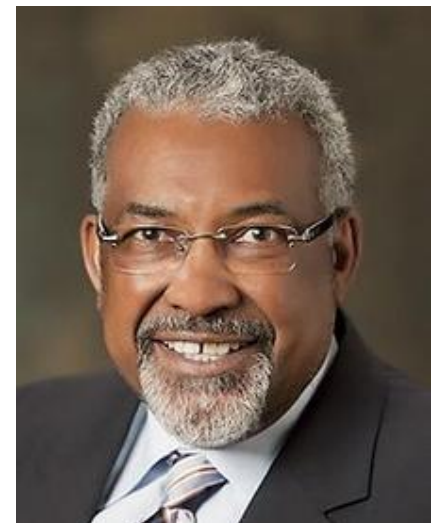
In 2004, Sedgwick County citizens voted to approve a one-percent sales tax increase to fully fund an arena in downtown Wichita. The INTRUST Bank Arena opened in January 2010. As promoters began to schedule events at the new downtown arena, Britt Brown Arena was subsequently closed in February 2010.

Interest in the Kansas Coliseum Complex was expressed by a private party in late 2011, and as of January 11, 2012, the Kansas Coliseum Complex, including the Kansas Pavilions, is no longer County-owned.



## Highlights

- The Kansas Coliseum Complex was sold to a private party in 2012 and is no longer County-owned.



# Accomplishments and Priorities

## Accomplishments

As of January 11, 2012, the Kansas Coliseum Complex, including the Kansas Pavilions, is no longer County-owned.

## Priorities

As of January 11, 2012, the Kansas Coliseum Complex, including the Kansas Pavilions, is no longer County-owned.



## Significant Budget Adjustments

The Kansas Pavilions is no longer County owned and no budget has been established.

**Significant Adjustments From Previous Budget Year**

- 2013 Revised budget includes one-time transfer out of residual equity to INTRUST Bank Arena sub-fund

Expenditures	Revenue	FTEs
(1,043,937)		

<b>Total</b>	(1,043,937)	-	-
--------------	-------------	---	---

Budget Summary by Category					Budget Summary by Fund			
	2012 Actual	2013 Adopted	2013 Revised	2014 Budget	% Chg. '13-'14	Expenditures	2013 Revised	2014 Budget
<b>Expenditures</b>								
Personnel	92,512	-	-	-	-	Kansas Pavilions-502	1,043,937	-
Contractual Services	62,318	-	-	-	-			
Debt Service	-	-	-	-	-			
Commodities	9,106	-	-	-	-			
Capital Improvements	-	-	-	-	-			
Capital Equipment	-	-	-	-	-			
Interfund Transfers	-	-	1,043,937	-	-100.0%			
<b>Total Expenditures</b>	<b>163,935</b>	<b>-</b>	<b>1,043,937</b>	<b>-</b>	<b>-100.0%</b>	<b>Total Expenditures</b>	<b>1,043,937</b>	<b>-</b>
<b>Revenue</b>								
Taxes	-	-	-	-	-			
Intergovernmental	-	-	-	-	-			
Charges For Service	111,582	-	-	-	-			
Other Revenue	1,491,988	-	-	-	-			
<b>Total Revenue</b>	<b>1,603,571</b>	<b>-</b>	<b>-</b>	<b>-</b>	<b>-</b>			
<b>Full-Time Equivalents (FTEs)</b>	<b>-</b>	<b>-</b>	<b>-</b>	<b>-</b>	<b>-</b>			

Budget Summary by Program					Full-Time Equivalents (FTEs)				
Program	Fund	Expenditures			2014 Budget	% Chg. '13-'14	Full-Time Equivalents (FTEs)		
		2012 Actual	2013 Adopted	2013 Revised			2013 Adopted	2013 Revised	2014 Budget
Pavilions	502	163,935	-	1,043,937	-	-100.0%	-	-	-
<b>Total</b>		<b>163,935</b>	<b>-</b>	<b>1,043,937</b>	<b>-</b>	<b>-100.0%</b>	<b>-</b>	<b>-</b>	<b>-</b>

