

Community Programs

Mission: Support local agencies providing enhanced quality of life for the residents of Sedgwick County.

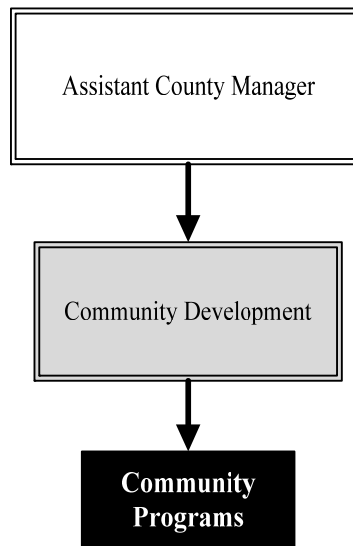
Ron Holt
Assistant County Manager

525 North Main, Suite 343
 Wichita, Kansas 67203
 316-660-9393
rholt@sedgwick.gov

Overview

Sedgwick County offers economic assistance for various area agencies that provide significant contributions to the community. Agencies funded by Community Programs submit budget proposals outlining funding needs and justification for local government assistance.

Sedgwick County provides funding to Visioneering Wichita and the Wichita Transit Authority (WTA) for Oaklawn/Sunview services. Visioneering Wichita began in 2004 as an effort to develop a regional community citizen based strategic plan. The WTA provides access for more than 3,000 residents to employment and education opportunities, as well as various other destinations at an affordable cost.

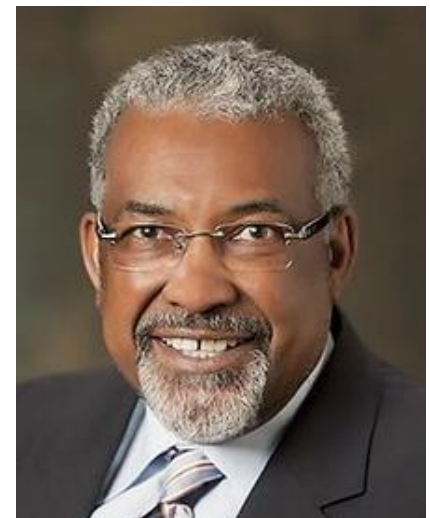


Strategic Goals:

- Continue to extend Wichita Transit Services to the Oaklawn neighborhood.

Highlights

- The Wichita Transit Authority provided rides to an average of 1,307 riders per month in the Oaklawn/Sunview community, located in the unincorporated area of the County.



Accomplishments and Priorities

Accomplishments

Visioneering Wichita continues to allow Sedgwick County community citizens opportunities for input on a regional community strategic plan. Sedgwick County's participation in Visioneering Wichita provides for:

- Citizen input in developing a preferred future
- Facilitation of communication so that reality and perception are aligned
- Creation of a strategic plan that ensures a quality of life and encourages young people to live, learn, work and play in the regional community

In 2012, the Oaklawn Community ridership averaged nearly 1,307 per month.

Priorities

The Community Programs funding will continue to support regional planning and Oaklawn community transportation in 2014.

Budget Allocations			
	<i>2012 Actual</i>	<i>2013 Revised</i>	<i>2014 Budget</i>
Mediation Center	\$8,000	-	\$8,000
Visioneering Wichita	\$40,000	\$40,000	\$40,000
Wichita Transit Authority for Oaklawn	\$34,214	\$34,214	\$32,214
Total	\$82,214	\$74,214	\$82,214



Significant Budget Adjustments

Mediation Center funding will be restored for the 2014 budget.

Significant Adjustments From Previous Budget Year

• Restore Mediation funding	<u>Expenditures</u>	<u>Revenue</u>	<u>FTEs</u>
	8,000		

Total 8,000 - -

Budget Summary by Category

Budget Summary by Fund

	2012			2014 Budget	% Chg. '13-'14	2013			2014 Budget
	Actual	Adopted	Revised			Expenditures	Revised	Budget	
Expenditures									
Personnel	-	-	-	-	-	General Fund-110	74,214	82,214	
Contractual Services	82,214	74,214	74,214	82,214	10.8%				
Debt Service	-	-	-	-	-				
Commodities	-	-	-	-	-				
Capital Improvements	-	-	-	-	-				
Capital Equipment	-	-	-	-	-				
Interfund Transfers	-	-	-	-	-				
Total Expenditures	82,214	74,214	74,214	82,214	10.8%	Total Expenditures	74,214	82,214	
Revenue									
Taxes	-	-	-	-	-				
Intergovernmental	-	-	-	-	-				
Charges For Service	-	-	-	-	-				
Other Revenue	-	-	-	-	-				
Total Revenue	-	-	-	-	-				
Full-Time Equivalents (FTEs)	-	-	-	-	-				

Budget Summary by Program

Program	Fund	Expenditures				2014 Budget	% Chg. '13-'14	Full-Time Equivalents (FTEs)		
		2012 Actual	2013 Adopted	2013 Revised	2013 Adopted			2013 Revised	2014 Budget	
Community Programs	110	82,214	74,214	74,214	82,214	10.8%	-	-	-	
Total		82,214	74,214	74,214	82,214	10.8%	-	-	-	

