

Technical Education

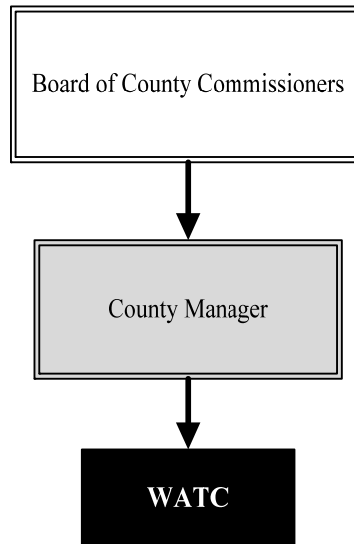
Mission: To provide students with a state-of-the-art technical education, whether they are here for the beginning state of their education or returning to gain further training for new skills

Kristi Zukovich
 Director of Communication and
 Community Initiatives
 525 North Main, Suite 315
 Wichita, Kansas 67203
 316.660.9370
kzukovic@sedgwick.gov

Overview

Wichita Area Technical College (WATC) is dedicated to serving business and industry in south-central Kansas through the delivery of a comprehensive portfolio of programs and services. WATC faculty and staff strive to develop a highly trained workforce and gives Kansas employers a competitive advantage. WATC is committed to providing the training that is needed – where it is needed, when it is needed.

In August 2004, after the Legislature passed a bill that separated WATC from the Unified School District 259, the Board of County Commissioners passed a resolution creating the Sedgwick County Technical Education & Training Authority (SCTETA). The purpose of the Authority is to be a broker/overseer of technical training that fits the needs of businesses and at the same time serves as the Board of Directors for Wichita Area Technical College.



Highlights

- New programs were implemented in 2012 which include Robotics and Electromechanical Systems programs.
- Students at NCAT find work, continue their education or join the military more than 80 percent of the time after finishing educational programs.
- NCAT played a major role in the formation of the National Aviation Consortium.
- NCAT provided tours for local residents as well as delegations from foreign countries including China, Chile and Ukraine.

Strategic Goals:

- Provide a national center for aviation training where aviation research and training come together
- Create a facility campus where people can go for retraining, traditional credit based training or specialized/customized training that is primarily for non-credit hours



Accomplishments and Priorities

Accomplishments

The National Center for Aviation Training (NCAT) is a world class training and research center designed to meet changing aviation/manufacturing business and workforce needs. NCAT is unique because it brings research and technical training under one roof blending them to meet industry needs. NCAT has two partners: WATC, under the direction of SCTETA, coordinates the training programs and instruction at NCAT, while Wichita State University's (WSU) National Institute for Aviation Research (NIAR) provides research and development opportunities and instruction.

As an aviation community center, NCAT provides an opportunity for thousands of people to attend events offering information about current or future career opportunities. Other events include Airbus Foundation Flying Challenge, Engineering Expo, Boy Scouts Merit Badge College and job fairs. The facility's conference rooms and lecture hall are frequently used by aviation companies, local employers, and other city, county, state and national elected leaders and organizations.

Priorities

WATC is the designated operator for the NCAT campus. Sedgwick County will continue to reimburse WATC, as the operator, for utilities, repairs, cleaning, security, and maintenance costs associated with WSU/NIAR space at NCAT.



Significant Budget Adjustments

There are no significant adjustments to Technical Education's 2014 budget.

Significant Adjustments From Previous Budget Year

- Reduce NCAT utility reimbursement budget to match request

Expenditures	Revenue	FTEs
(24,057)		

Total	(24,057)	-	-
--------------	----------	---	---

Budget Summary by Category

	2012 Actual	2013 Adopted	2013 Revised	2014 Budget	% Chg. '13-'14
Expenditures					
Personnel	-	-	-	-	-
Contractual Services	1,119,805	1,089,261	1,089,261	1,065,204	-2.2%
Debt Service	-	-	-	-	-
Commodities	-	-	-	-	-
Capital Improvements	-	-	-	-	-
Capital Equipment	-	-	-	-	-
Interfund Transfers	-	-	-	-	-
Total Expenditures	1,119,805	1,089,261	1,089,261	1,065,204	-2.2%
Revenue					
Taxes	-	-	-	-	-
Intergovernmental	-	-	-	-	-
Charges For Service	163,349	196,261	196,261	166,132	-15.4%
Other Revenue	-	-	-	-	-
Total Revenue	163,349	196,261	196,261	166,132	-15.4%
Full-Time Equivalents (FTEs)	-	-	-	-	-

Budget Summary by Fund

Expenditures	2013 Revised	2014 Budget
General Fund-110	1,089,261	1,065,204
Total Expenditures	1,089,261	1,065,204

Budget Summary by Program

Program	Fund	Expenditures				2014 Budget	% Chg. '13-'14	Full-Time Equivalents (FTEs)		
		2012 Actual	2013 Adopted	2013 Revised	2013 Adopted			2013 Revised	2014 Budget	
W.A.T.C	110	940,000	893,000	893,000	893,000	0.0%	-	-	-	
NCAT Utility Reimbursemen	110	179,805	196,261	196,261	172,204	-12.3%	-	-	-	
Total		1,119,805	1,089,261	1,089,261	1,065,204	-2.2%	-	-	-	



• W.A.T.C

Wichita Area Technical College (WATC) changes lives by training people for high-wage, high-demand jobs. WATC is dedicated to serving business and industry in south-central Kansas through the delivery of a comprehensive portfolio programs meeting their needs and ensuring students develop the right skills.

Fund(s): General Fund 110

58002-110

	2012	2013	2013	2014	% Chg.
	Actual	Adopted	Revised	Budget	'13-'14
Expenditures					
Personnel	-	-	-	-	
Contractual Services	940,000	893,000	893,000	893,000	0.0%
Debt Service	-	-	-	-	
Commodities	-	-	-	-	
Capital Improvements	-	-	-	-	
Capital Equipment	-	-	-	-	
Interfund Transfers	-	-	-	-	
Total Expenditures	940,000	893,000	893,000	893,000	0.0%
Revenue					
Taxes	-	-	-	-	
Intergovernmental	-	-	-	-	
Charges For Service	-	-	-	-	
Other Revenue	-	-	-	-	
Total Revenue	-	-	-	-	
Full-Time Equivalents (FTEs)	-	-	-	-	

• NCAT Utility Reimbursement

National Center for Aviation Training (NCAT) is a world-class training/research center designed to meet changing aviation/ manufacturing business and workforce needs. Students receive training in real world environment for aviation manufacturing and aircraft and power plant mechanics. NCAT is unique because it brings research and technical training under one roof blending them to meet industry needs. There are two partners at NCAT: Wichita Area Technical College (WATC), under the direction of Sedgwick County Technical Education & Training Authority, coordinates the training programs and instruction at NCAT while Wichita State University's (WSU) National Institute for Aviation Research (NIAR) provides research and development opportunities as well as instruction.

WATC is the designated operator for the NCAT campus. Sedgwick County reimburses WATC, as the operator, for utilities, repairs, cleaning, security, and maintenance costs associated with WSU/NIAR space at NCAT.

Fund(s): General Fund 110

58003-110

	2012	2013	2013	2014	% Chg.
	Actual	Adopted	Revised	Budget	'13-'14
Expenditures					
Personnel	-	-	-	-	
Contractual Services	179,805	196,261	196,261	172,204	-12.3%
Debt Service	-	-	-	-	
Commodities	-	-	-	-	
Capital Improvements	-	-	-	-	
Capital Equipment	-	-	-	-	
Interfund Transfers	-	-	-	-	
Total Expenditures	179,805	196,261	196,261	172,204	-12.3%
Revenue					
Taxes	-	-	-	-	
Intergovernmental	-	-	-	-	
Charges For Service	163,349	196,261	196,261	166,132	-15.4%
Other Revenue	-	-	-	-	
Total Revenue	163,349	196,261	196,261	166,132	-15.4%
Full-Time Equivalents (FTEs)	-	-	-	-	



[This Page Intentionally Left Blank]