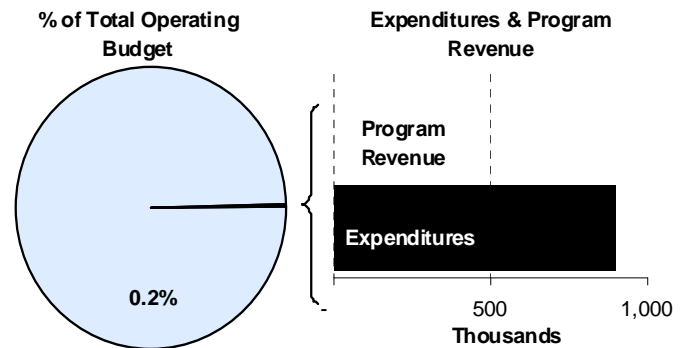
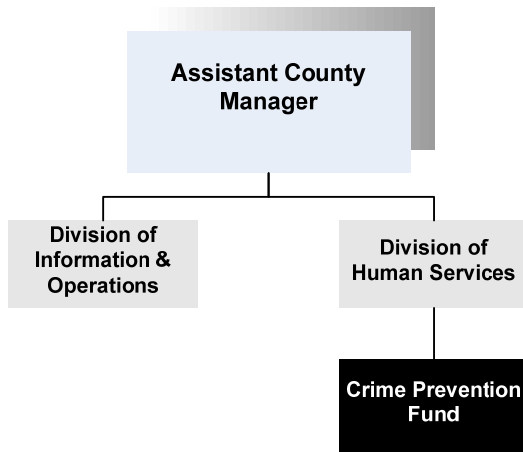




Deborah Donaldson
 Director of Human Services
 635 N. Main
 Wichita, Kansas 67203
 316-660-7670
ddonalds@sedgwick.gov

Mission:

- To effectively and efficiently administer the Community Crime Prevention Fund in a results driven manner; thereby aiding the community-wide goal of prioritizing prevention services, establishing effective early interventions and ultimately reducing the number of juvenile offenders.



Program Information

The Sedgwick County Community Crime Prevention Fund was initiated in 1998 out of County Commissioners’ frustration with the high costs of jail construction. Commissioners wanted a more proactive approach to crime prevention in Sedgwick County.

The Sedgwick County Community Crime Prevention Fund utilizes current research to target grant dollars to achieve the greatest crime prevention impact. Funds are directed to specific populations demonstrating a high to moderate risk for future criminality. Risk factors considered are:

- History of anti-social behavior
- Anti-social personality
- Anti-social cognition
- Anti-social associates and contacts
- Family and/or marital issues
- Social and/or work problems
- Leisure and/or recreation activities
- Substance abuse

For 2009, the following programs are funded by the Crime Prevention Fund:

Big Brothers and Big Sisters received \$154,500 for mentoring at-risk youth and serves approximately 250 youth per year. This is an evidence-based program that matches at-risk youth with caring adult mentors and has been a prevention grant recipient since 1998.

Boys and Girls Club received \$120,000 for their Targeted Outreach Program serving approximately 70 youth per year. This is an educational program for youth who have been expelled from school. The program primarily targets youth expelled for a full 186 days under school district “no tolerance” policies and has been a prevention grant recipient since 1998.

Catholic Charities’ Choose Respect program was first funded in FY 2008. Choose Respect was awarded a grant of \$37,000 for a comprehensive approach to prevention. It includes a school-wide campaign aimed at raising expectations for respectful behavior. Since the program is student driven the components of the program vary by school.

Communities In Schools received \$194,218 for collaborative, school-based services for approximately 350. The prevention grant serves youth at Jefferson, Cooper and Oaklawn Elementary Schools, Derby Sixth Grade Center and Derby High School. Communities In Schools works to connect students with community services and has received a prevention grant since 1998.

Episcopal Social Services received \$50,000 for the Teen Intervention Program, a diversion program for approximately 200 youth arrested for the first time for shoplifting and other minor misdemeanors. The Teen Intervention Program has received a prevention grant off and on since 1998.

Higher Ground received \$91,500 for its Learning the Ropes Program. This program provides primary treatment services to adolescents in an unconventional treatment model that includes experiential components. Additionally, the "Parents Who Care" curriculum is utilized for parent groups. Higher Ground has received a prevention grant since 1998 and serves approximately 185 people per year (85 youth and 100 parents).

Kansas School for Effective Learning (KANSEL) received \$84,500 for its GED Preparation, Training and Placement Program. KANSEL serves adolescents that have dropped out of high school; assisting the youth to obtain a GED or diploma and secure employment. This program includes the JOBSTART program and KANSEL has received a prevention grant since 1998, serving approximately 300 youth per year.

Mental Health Association (MHA) received \$54,300 for the PATHS for Kids program. PATHS is an evidence-based conflict-resolution skill building program. MHA staff provide the training in seven elementary schools in Wichita. Fiscal year 2005 was the first year of funding for the PATHS for Kids program. PATHS will serve approximately 850 youth during the school year.

Wichita Family Services Institute's ON-TRAC program received \$58,900 for FY 2009. The ON-TRAC program offers classes and mentoring to enhance opportunities for teenagers from the age of 12 to 17 demonstrating problem behaviors. The program has received a prevention grant since 2000 and serves approximately 85 youth per year.

Departmental Sustainability Initiatives

The Sedgwick County Community Crime Prevention Fund impacts economic development issues by targeting the reduction of juvenile crime thus increasing quality of life for both citizens and at risk youth. Reducing disproportionate minority contact with law enforcement is an important goal of the Crime Prevention Grant program. These services are selected and evaluated on their ability to impact disproportionate minority law enforcement contact, improving social equity in the community by helping youth attain the skills they need to avoid legal problems.

Department Accomplishments

Recent discussions have centered on the need for a program specifically targeting gang-involved youth. Gang violence has become an increasing concern for the community and currently funded programs have only limited success with gang-involved youth. The Youth for Christ's City Works Program received a start-up grant of \$44,000 for calendar year 2009. City Works is a comprehensive, faith-based gang intervention program based on the hugely successful Homeboy Industries model program from California. The program provides job training and employment, as well as, a community service work targeting at-risk youth.

Budget Adjustments

There are no significant budget adjustments for the budget year.

Alignment with County Values

- **Equal Opportunity** - Reducing disproportionate minority contact with law enforcement
- **Accountability** - Youth are held accountable for their offending behavior and service providers accountable for their outcomes
- **Commitment** - Staff and vendors to achieve positive outcomes for juveniles

Goals & Initiatives

- **Administer the Sedgwick County Community Crime Prevention Fund utilizing current research to target grant dollars to achieve the greatest impact**
- **Utilize a community-wide focus to develop a comprehensive continuum of crime prevention and early intervention programs to address areas of need**
- **Positively impact juvenile offending and disproportionate juvenile minority law enforcement contact in Sedgwick County**

Significant Adjustments From Previous Budget Year

Expenditures Revenue FTEs

- No significant adjustments for the budget year

Total

Budget Summary by Category						Budget Summary by Fund		
	2008 Actual	2009 Adopted	2009 Revised	2010 Budget	% Chg. 09-10	Expenditures	2009 Revised	2010 Budget
Expenditures								
Personnel	-	-	-	-	-	General Fund-110	844,235	899,235
Contractual Services	869,835	899,235	844,235	899,235	6.5%			
Debt Service	-	-	-	-	-			
Commodities	-	-	-	-	-			
Capital Improvements	-	-	-	-	-			
Capital Equipment	-	-	-	-	-			
Interfund Transfers	-	-	-	-	-			
Total Expenditures	869,835	899,235	844,235	899,235	6.5%	Total Expenditures	844,235	899,235
Revenue								
Taxes	-	-	-	-	-			
Intergovernmental	-	-	-	-	-			
Charges For Service	-	-	-	-	-			
Other Revenue	2,273	-	-	-	-			
Total Revenue	2,273	-	-	-	-			
Full-Time Equivalents (FTEs)	-	-	-	-	-			

Budget Summary by Program							Full-Time Equivalents (FTEs)			
Program	Fund	Expenditures				2010 Budget	% Chg. 09-10	2009 Adopted	2009 Revised	2010 Budget
		2008 Actual	2009 Adopted	2009 Revised	2010 Budget					
Crime Prevention Fund	110	869,835	899,235	844,235	899,235	6.5%	-	-	-	
Total		869,835	899,235	844,235	899,235	6.5%	-	-	-	

