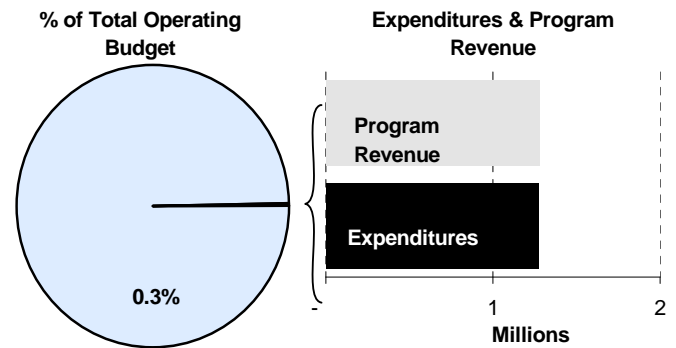
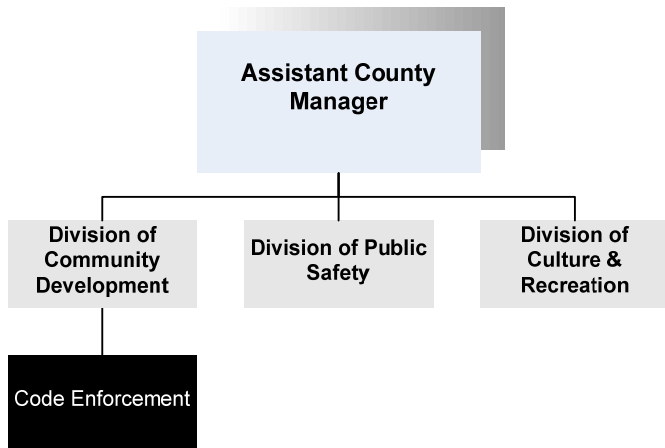




Glen Wiltse
 Director of Code Enforcement
 1015 Stillwell, 1st Floor
 Wichita, Kansas 67213
 316-660-7088
gwiltse@sedgwick.gov

Mission:

- Ensure a safe living, working and recreational environment for the residents and citizens of Sedgwick County by creating partnerships with the public to ensure the enforcement of building, construction, zoning, subdivision, nuisance and environmental regulations.



Program Information

Code Enforcement ensures that resolutions put forth by the Sedgwick County Commissioners are enforced. The department inspects new construction, remodels, wastewater, and wells for contractors and citizens to make sure the structures meet the adopted codes. They follow up on complaints regarding nuisance and zoning to assure the property is in compliance with the Unified Zoning Code. Their services are provided for unincorporated Sedgwick County and are contracted to support 10 smaller communities within Sedgwick County.

Resolutions & Codes:

- Commercial Building Code
- Residential Building Code
- Residential Building Code Amendments
- Manufactured Homes
- Manufactured Housing Code Amendments
- Rental Housing Code
- Property Title Transfer Inspection Code

- Electrical Code
- Mechanical Code
- Plumbing Code
- Sanitary Advisory Board
- Sanitary Code
- Sanitary Service
- Water Well Advisory Board
- Domestic Well Advisory Board
- Service Drive Code
- Sign Code
- Nuisance
- Nuisance Abatement
- Conservation and Protection of Farmland
- Floodplain Management
- Wastewater
- Wastewater Advisory Board

In 1986 the Federal Emergency Management Agency (FEMA) mapped the areas in Sedgwick County that were prone to flooding. These areas are commonly known as the 100-year floodplain. A more precise description would be the one percent annual chance



flood hazard areas. Basically, this means every year there is a one percent chance that flooding in these areas can occur.

Sedgwick County adopted the FEMA maps and joined the National Flood Insurance Program (NFIP). By joining the NFIP, residents of Sedgwick County are able to purchase flood insurance. Flood insurance is only available through NFIP. The homeowners' insurance policy does not cover damages resulting from flooding.

Departmental Sustainability Initiatives

The Department assigns each inspector a quadrant of Sedgwick County to inspect. By doing this the Department reduces the number of miles driven per inspector, which saves on travel time and expenses.

Code Enforcement provides a "One-Stop-Shop" location for citizens to obtain the proper permits needed for construction projects. In the past, citizens would make multiple stops at various destinations to obtain all necessary permits. Permits for building construction, wastewater, floodplain, mortgage inspection, and water wells can now be picked up from the Code Enforcement office at 1144 S. Seneca.

In early 2006, Code Enforcement took over supervision of duties for the Animal Control Department, effectively placing all enforcement of County codes under one department. The Animal Control budget can be referenced within the Health and Welfare section of this document.

The Department of Code Enforcement has in place three resolutions that regulate domestic water wells, wastewater systems and a provision for property title transfers. These resolutions provide for the community's environmental safety.

The provisions of the domestic water well code are for the purpose of regulating and controlling the

development maintenance and use of water supplies in Sedgwick County, Kansas, in order that public health will be protected and the contamination and pollution of the water resources of the County will be prevented.

The provisions of the property title transfer inspection codes are for the purpose of regulating and controlling the maintenance of water wells and onsite wastewater systems by requiring inspections of such wells and onsite wastewater systems when title to property is transferred in order that the public health will be protected and the contamination and pollution of the water resources of the County will be prevented.

The provision of the Sanitary Code provides for new construction and maintenance of onsite wastewater systems.

Department Accomplishment

The staff of Code Enforcement attends continuing education opportunities to stay current with their certifications. The wastewater staff provides educational training to wastewater installers, realtors and community officials. Code Enforcement also assisted the Health Department in drafting swimming pool, hot tub and spa regulations. The regulations benefit the public by reducing the potential for communicable diseases transferred through water.

Budget Adjustments

Changes to the Code Enforcement 2010 budget reflect an increase in benefits costs and a 2.0 percent general pay adjustment for employees earning less than \$75,000. No increases were provided for contractals, commodities, and capital equipment from the 2009 Adopted budget for property tax supported funds, with the exception of \$36,250 to offset a 29 percent reduction in funding from the Local Environmental Protection (LEP) Grant awarded by the State of Kansas. The General Fund expenditures are offset by an increase to the wastewater fees.

Alignment with County Values

- **Accountability -**
Code Enforcement requires daily logs that include location, type of inspection, number of inspections, miles driven, number of phone calls received, revenue received, permits issued, founded complaints and complaints resolved
- **Commitment -**
Code Enforcement is committed to the enforcement of adopted codes and regulations that insure public safety and provide a safe living, working and recreational environment for our community
- **Honesty and Open Communication -**
The Department believes in open and honest dialog with their customers to educate and assist them in achieving success with land use within unincorporated Sedgwick County

Goals & Initiatives

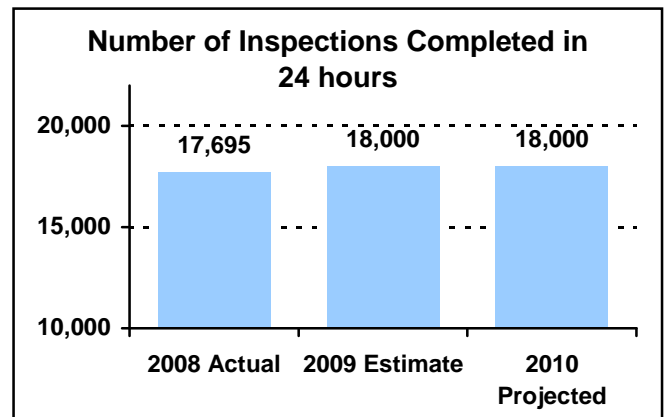
- **Perform 90% of inspections within 24 hours and 100% of inspections within 48 hours of receiving notification**
- **Increase permitting opportunity by establishing a one-stop shop for building, wastewater, floodplain and sign permits**

PERFORMANCE MEASURE HIGHLIGHTS

The following chart illustrates the Key Performance Indicator (KPI) of Code Enforcement.

Number of inspections completed in 24 hours -

- This measure reflects the Department’s commitment to meet the citizens’ and contractors’ time constraints and insure that the codes are being met.



Department Performance Measures	2008 Actual	2009 Est.	2010 Proj.
Goal: Perform 90% of inspections within 24 hours and 100% of inspections within 48 hours of receiving notification			
Number of inspections completed in 24 hours (KPI)	17,695	18,000	18,000
Land use complaints	1,947	1,975	1,975
Number of buildings requiring 2 nd inspection	465	470	470
Inspections per inspector	2,310	2,350	2,350
Goal: Increase permitting opportunity by establishing a one-stop shop for building, wastewater, floodplain and sign permits			
Permits issued	2,503	2,500	2,500
Plan review	106	110	110

Significant Adjustments From Previous Budget Year

- Reduction in the Local Environmental Protection Plan (LEPP) grant
- Shift Environmental Inspector position to the general fund

Expenditures	Revenue	FTEs
(38,064)	(36,250)	(1.00)
38,064		1.00

Total	-	(36,250)	-
--------------	---	----------	---

Budget Summary by Category

Expenditures	2008	2009	2009	2010	% Chg.
	Actual	Adopted	Revised		
Personnel	1,005,764	1,055,163	1,052,481	1,090,985	3.7%
Contractual Services	138,636	140,000	128,560	139,904	8.8%
Debt Service	-	-	-	-	-
Commodities	45,633	26,564	45,805	42,154	-8.0%
Capital Improvements	-	-	-	-	-
Capital Equipment	-	6,000	6,000	-	-100.0%
Interfund Transfers	-	-	-	-	-
Total Expenditures	1,190,033	1,227,727	1,232,846	1,273,043	3.3%
Revenue					
Taxes	-	-	-	-	-
Intergovernmental	193,731	125,000	125,000	88,750	-29.0%
Charges For Service	736,744	714,469	714,469	799,319	11.9%
Other Revenue	401,802	275,022	275,022	392,500	42.7%
Total Revenue	1,332,277	1,114,491	1,114,491	1,280,569	14.9%
Full-Time Equivalents (FTEs)	17.00	17.00	17.00	17.00	0.0%

Budget Summary by Fund

Expenditures	2009	2010
	Revised	Budget
General Fund-110	1,104,848	1,183,109
Misc. Grants-279	127,998	89,934
Total Expenditures	1,232,846	1,273,043

Budget Summary by Program

Program	Fund	Expenditures				2010	% Chg.	Full-Time Equivalents (FTEs)		
		2008	2009	2009	2010			2009	2009	2010
		Actual	Adopted	Revised	Budget	09-10	Adopted	Revised	Budget	
Code & LEPP	Mult.	486,278	489,387	494,506	479,334	-3.1%	7.00	7.00	6.00	
Building Insp.	110	563,624	652,552	652,552	739,936	13.4%	9.00	9.00	10.00	
Land Use	110	140,132	85,788	85,788	53,773	-37.3%	1.00	1.00	1.00	
Total		1,190,033	1,227,727	1,232,846	1,273,043	3.3%	17.00	17.00	17.00	



Personnel Summary by Fund

Position Title(s)	Fund	Band	Budgeted Personnel Costs			Full-Time Equivalents (FTEs)		
			2009 Adopted	2009 Revised	2010 Budget	2009 Adopted	2009 Revised	2010 Budget
Code Enforcement Director	110	B430	86,939	92,234	92,234	1.00	1.00	1.00
Assistant Codes Director	110	B326	60,457	63,531	63,531	1.00	1.00	1.00
Water Quality Specialist II	110	B324	55,120	57,286	57,286	1.00	1.00	1.00
Building Plan Examiner	110	B323	46,139	48,497	48,497	1.00	1.00	1.00
Senior Administrative Officer	110	B323	43,611	45,840	45,840	1.00	1.00	1.00
Combination Inspector	110	B322	127,877	132,554	132,554	3.00	3.00	3.00
Codes and Flood Plain Technician	110	B321	43,054	44,354	44,354	1.00	1.00	1.00
Building Inspector II	110	B220	68,867	71,426	71,426	2.00	2.00	2.00
Environmental Inspector	110	B220	-	-	38,060	-	-	1.00
Zoning Inspector	110	B219	35,258	36,323	36,323	1.00	1.00	1.00
Administrative Assistant	110	B218	36,386	37,804	37,504	1.00	1.00	1.00
Codes Specialist	110	B217	52,672	54,061	54,061	2.00	2.00	2.00
Domestic Well Specialist	279	B323	50,772	54,350	54,350	1.00	1.00	1.00
Environmental Inspector	279	B220	36,945	38,060	-	1.00	1.00	-
Subtotal					776,020	17.00	17.00	17.00
Add:								
Budgeted Personnel Savings (Turnover)					-			
Compensation Adjustments					13,675			
Overtime/On Call					496			
Benefits					300,794			
Total Personnel Budget					1,090,985			



• Code & Local Environmental Protection Plan

Administrative staff issues permits for the unincorporated areas of the County, reviews permits issued for ten cities within Sedgwick County, licenses contractors and building and trade companies, and furnishes zoning and subdivision information to citizens, realtors, appraisers, and contractors. Permit fees are also collected here for the unincorporated area of Sedgwick County and the ten communities in which inspection services are provided.

Duties also include monitoring the Local Environmental Protection Plan (LEPP) grant, which the County assumed 100% responsibility for in July of 2005 from the City of Wichita.

Fund(s): General Fund/Misc. Grants

	2008	2009	2009	2010	% Chg.
	Actual	Adopted	Revised	Budget	09-10
Expenditures					
Personnel	412,216	431,406	428,724	398,217	-7.1%
Contractual Services	49,998	30,000	30,560	48,563	58.9%
Debt Service	-	-	-	-	-
Commodities	24,064	21,981	29,222	32,554	11.4%
Capital Improvements	-	-	-	-	-
Capital Equipment	-	6,000	6,000	-	-100.0%
Interfund Transfers	-	-	-	-	-
Total Expenditures	486,278	489,387	494,506	479,334	-3.1%
Revenue					
Taxes	-	-	-	-	-
Intergovernmental	193,731	125,000	125,000	88,750	-29.0%
Charges For Service	736,744	714,469	714,469	799,319	11.9%
Other Revenue	401,187	275,022	275,022	392,500	42.7%
Total Revenue	1,331,662	1,114,491	1,114,491	1,280,569	14.9%
Full-Time Equivalents (FTEs)	7.00	7.00	7.00	6.00	-14.3%

Goal(s):

- Increase customer service to homeowners and contractors
- Create additional reference materials for citizens
- Provide additional services to contractors and the public

• Building Inspection

The Building Inspection program inspects construction projects in the unincorporated area of Sedgwick County. This consists of building, electrical, plumbing and mechanical inspections during the construction phase of all building projects. This also includes the ten communities with whom the County has contracts to perform inspection services. Commercial project plans are reviewed prior to construction. In addition to building inspections, this department has taken over the enforcement of the sanitary code. This involves review of soils and groundwater information for issuing private wastewater disposal system permits, subdivision reviews for private wastewater system approval, complaints, and consultations for existing wastewater systems. The County now has floodplain regulations adopted and FEMA issued a new map study in February 2007.

Fund(s): General Fund 110

42001-110

	2008	2009	2009	2010	% Chg.
	Actual	Adopted	Revised	Budget	09-10
Expenditures					
Personnel	492,362	580,552	580,552	648,944	11.8%
Contractual Services	59,692	70,000	63,000	82,992	31.7%
Debt Service	-	-	-	-	-
Commodities	11,570	2,000	9,000	8,000	-11.1%
Capital Improvements	-	-	-	-	-
Capital Equipment	-	-	-	-	-
Interfund Transfers	-	-	-	-	-
Total Expenditures	563,624	652,552	652,552	739,936	13.4%
Revenue					
Taxes	-	-	-	-	-
Intergovernmental	-	-	-	-	-
Charges For Service	-	-	-	-	-
Other Revenue	615	-	-	-	-
Total Revenue	615	-	-	-	-
Full-Time Equivalents (FTEs)	9.00	9.00	9.00	10.00	11.1%

Goal(s):

- Reduce re-inspections of contractors' projects by enhancing inspection services
- Offer "one-stop" service for permits related to building construction and zoning requirements
- Reduce response time for inspections
- Provide increased customer service to contractors and public for private sewage system installations



• Land Use

Land Use is responsible for enforcement of the Wichita & Sedgwick County Unified Zoning Code Regulations and the Sedgwick County Nuisance Codes Resolution. Zoning regulations include the review and monitoring of conditional uses, home occupations, land use issues and compliance. Enforcement of the nuisance code resolution generally consists of responding to citizen complaints dealing with inoperable vehicles, trash, tall grass, salvage material, and open and abandoned structures.

Fund(s): General Fund 110

42002-110

	2008	2009	2009	2010	% Chg.
	Actual	Adopted	Revised	Budget	09-10
Expenditures					
Personnel	101,187	43,205	43,205	43,824	1.4%
Contractual Services	28,947	40,000	35,000	8,349	-76.1%
Debt Service	-	-	-	-	
Commodities	9,998	2,583	7,583	1,600	-78.9%
Capital Improvements	-	-	-	-	
Capital Equipment	-	-	-	-	
Interfund Transfers	-	-	-	-	
Total Expenditures	140,132	85,788	85,788	53,773	-37.3%
Revenue					
Taxes	-	-	-	-	
Intergovernmental	-	-	-	-	
Charges For Service	-	-	-	-	
Other Revenue	-	-	-	-	
Total Revenue	-	-	-	-	
Full-Time Equivalents (FTEs)	1.00	1.00	1.00	1.00	0.0%

Goal(s):

- Offer “one-stop” service for citizen complaints related to nuisance and zoning compliance
- Provide investigation of complaints within 48 hours
- Update website for access to code information by general public

