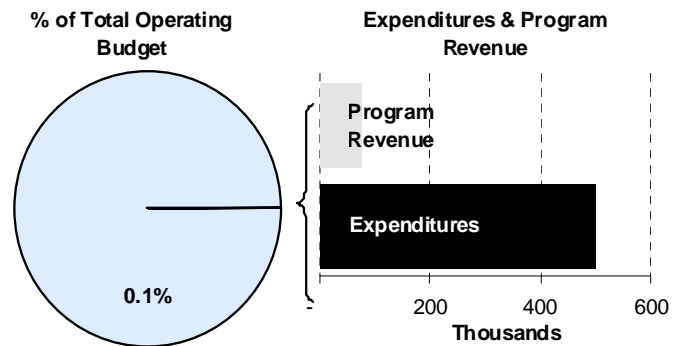
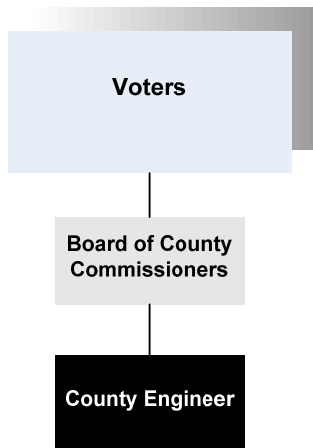




Joe Brunk
 Director of Noxious Weeds/Household Hazardous Waste
 901 Stillwell
 Wichita, Kansas 67213
 316-660-7459
jbrunk@sedgwick.gov

Mission:
 To control and eradicate noxious weeds on all property within Sedgwick County.



Program Information

The Noxious Weeds Department controls and eradicates noxious weeds on all property within Sedgwick County, as required by state law (KSA 2-1318). Its primary responsibility is controlling noxious weeds on County property and rights-of-way. The Department also operates a vegetation management program to suppress perennial grasses and undesirable vegetation on shoulders and in ditches. Finally, it enforces state noxious weed laws and assists citizens in meeting their noxious weed control responsibilities by providing information on effective techniques and products.

Control of noxious weeds is important to the economy of Kansas. As an example, surveys in the early 1900's indicated that the bindweed acreage in Kansas was doubling about every 5 years. At that rate of spread, bindweed would have covered 7 million acres of cropland by 1964 had there been no organized control

program. The initial Kansas Noxious Weed law, passed in 1937, and follow-on legislation has helped protect Kansas cropland and rangeland from such invasive noxious weeds as the field bindweed, musk thistle and the newest threat, sericea lespedeza.

Noxious Weeds staff uses a wide variety of equipment from truck-mounted hydraulic spray units to treat road shoulders and roadsides efficiently to spray-equipped all-terrain vehicles that can find and treat noxious weed infestations quickly with minimum environmental impact.

Noxious Weeds is developing, together with County GIS staff, a GPS-based database and system to catalog, treat and monitor noxious weed infestations. Staff have now acquired a notebook computer with GPS capability and intend to use it to map and document sericea lespedeza infestations.

Departmental Sustainability Initiatives

Noxious Weeds makes a major contribution to the economic sustainability of the County by helping farmers fully realize the production potential of their land. The department is dedicated to increasing crop production by reducing weed competition thus increasing the profit and sustainability of our agriculture partners. This is done through discounted herbicide sales for noxious weeds, custom prescribed vegetation management plans and educational messages.

Noxious Weeds also works to mitigate its impact on the environment by constantly looking at potential application techniques, equipment and materials that work better, faster, are safer in the environment, and offer cost savings to the department. Noxious Weeds fully counsels its customers on the proper handling, mixing, and application of herbicides. Much thought goes into the purchase of herbicides and equipment each year as the department reviews existing programs to evaluate the need, the desired results, and the costs involved. The Department also works to mitigate its impact on the environment by participating in the County waste minimization program. It recycles paper, aluminum cans and plastic herbicide containers.

Department Accomplishments

Noxious Weeds staff rigorously maintains much of their own specialized spray equipment.

Budget Adjustments

Changes to the Noxious Weed 2010 budget reflect an increase in benefits costs and a 2.0 general pay adjustment for employees earning less than \$75,000. No increases were provided for contractuels, commodities, and capital equipment from the 2009 Adopted budget for property tax supported funds.

Alignment with County Values

- **Equal Opportunity -**
Provide noxious weed treatment wherever it is needed across the County
- **Commitment -**
To protecting County agriculture from economic damage
- **Open Communication -**
Keeping customers and general public fully informed

Goals & Initiatives

- **Fully treat all noxious weed infestations on all County properties and rights of way**
- **Control with the objective of eradication, all Sericea Lespedeza in Sedgwick County**
Will use GPS notebook to map and document this threat. This should improve treatment efficiency
- **To increase public awareness of noxious weeds**
Regular education efforts continue

Awards & Accreditations

- Staff maintain appropriate environmental and safety training

Significant Adjustments From Previous Budget Year

- Cost allocation plan adjustments
- Adjusted departmental fleet charges

Expenditures	Revenue	FTEs
6,406		
(19,552)		

Total	(13,146)	-	-
--------------	----------	---	---

Budget Summary by Category

Budget Summary by Fund

	2008 Actual	2009 Adopted	2009 Revised	2010 Budget	% Chg. 09-10
Expenditures					
Personnel	263,885	276,829	276,829	288,764	4.3%
Contractual Services	100,753	123,260	123,260	110,076	-10.7%
Debt Service	-	-	-	-	
Commodities	97,547	102,243	102,243	102,198	0.0%
Capital Improvements	-	-	-	-	
Capital Equipment	-	-	-	-	
Interfund Transfers	-	-	-	-	
Total Expenditures	462,185	502,332	502,332	501,038	-0.3%
Revenue					
Taxes	399,302	436,812	436,812	389,808	-10.8%
Intergovernmental	-	-	-	-	
Charges For Service	71,021	75,332	75,332	74,428	-1.2%
Other Revenue	40	57	57	41	-28.1%
Total Revenue	470,363	512,201	512,201	464,277	-9.4%
Full-Time Equivalents (FTEs)	5.00	5.00	5.00	5.00	0.0%

	2009 Revised	2010 Budget
Expenditures		
Noxious Weeds-207	502,332	501,038
Total Expenditures	502,332	501,038

Budget Summary by Program

Program	Fund	Expenditures			2010 Budget	% Chg. 09-10
		2008 Actual	2009 Adopted	2009 Revised		
Noxious Weeds	207	457,484	502,332	502,332	501,038	-0.3%
Noxious Weeds Chem	110	4,700	-	-	-	
Total		462,185	502,332	502,332	501,038	-0.3%

Full-Time Equivalents (FTEs)		
2009 Adopted	2009 Revised	2010 Budget
5.00	5.00	5.00
-	-	-
5.00	5.00	5.00



Personnel Summary by Fund

Position Title(s)	Fund	Band	Budgeted Personnel Costs			Full-Time Equivalents (FTEs)			
			2009 Adopted	2009 Revised	2010 Budget	2009 Adopted	2009 Revised	2010 Budget	
HHW/Noxious Weed Director	207	B428	39,898	42,141	42,141	0.50	0.50	0.50	
Senior Herbicide Applicator	207	B321	46,068	47,757	47,757	1.00	1.00	1.00	
Herbicide Applicator	207	B216	95,275	97,744	97,744	3.00	3.00	3.00	
Fiscal Associate	207	B216	13,208	13,823	13,823	0.50	0.50	0.50	
Subtotal					201,465		5.00	5.00	5.00
Add:									
Budgeted Personnel Savings (Turnover)					-				
Compensation Adjustments					3,186				
Overtime/On Call					3,060				
Benefits					81,053				
Total Personnel Budget					288,764				

