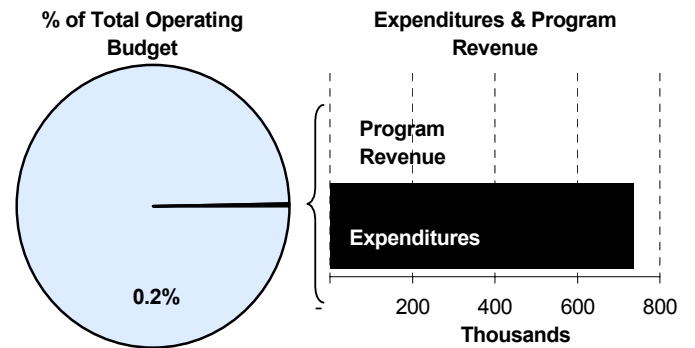
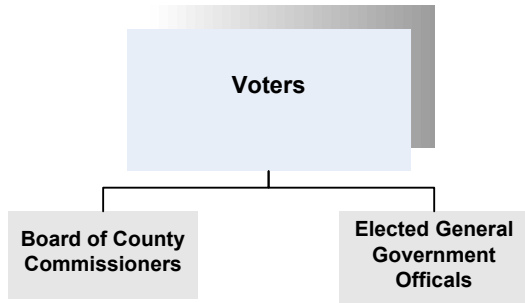




Commissioners
 David Unruh 1st District, Tim Norton 2nd District
 Tom Winters 3rd District, Kelly Parks 4th District
 Gwen Welshimer 5th District
 525 N Main, Suite 320
 Wichita, Kansas 67203
 316-660-9300

Mission:
 □ Assure quality public services are provided for the present and future well-being of the citizens of Sedgwick County.



Program Information

The Board of County Commissioners is the governing body of Sedgwick County, responsible for setting policies for the entire organization and the appropriation of resources to accomplish adopted policies. The Board also serves as the hearing panel on tax appeals, County Board of Canvassers for elections, Board of Health, and the Governing Body of Fire District No. 1.

The Sedgwick County Commissioners are vested by Kansas Statute with both legislative and administrative powers and duties for governing Sedgwick County. Most of these responsibilities are provided in Chapter 19, Article 2 of the Kansas Statutes. These powers and duties include the following:

- Supervision of County property
- Organization of townships
- Control of the financial affairs of the County
- Approval of the annual County budget
- Levying of County taxes

- Designation of depositories for the County Treasurer
- Construction and maintenance of County roads and bridges
- Approval of land use and zoning policies
- Issuance of bonds
- Awarding of contracts
- Incorporation of cities
- Creation of special districts
- Setting salaries of all County officials
- Providing a jail, courthouse, office space, and supplies for all County officers and the District Court
- Appointment of members of various boards and commissions

In fulfilling its legislative responsibilities, the Board of Sedgwick County Commissioners consider resolutions which are equivalent to “bills” in the United States Congress and the Kansas Legislature and to ordinances considered by municipal governing councils. A resolution generally originates as the request of a Commissioner, another elected official, the County

Manager, or a department director. Resolutions are drafted by the County Counselor’s Office.

Before voting on a proposed resolution, it is discussed by the Board of County Commissioners at the public meeting. Any citizen may appear before the Board to speak, up to five minutes, either in favor of or in opposition to the resolution. The Board votes on the resolution following discussion. Adoption of an Ordinary resolution requires a majority (three or more) “yes” votes from the Board. Resolutions become effective on passage or upon publication, if required.

If there is a state law on a subject that applies to a particular county, but the law does not apply to all counties uniformly, a Charter resolution is necessary to deal with that subject. A Charter resolution requires four “yes” votes and is subject to a protest petition. If a protest petition is filed, the matter must go before a vote of the people.

Commissioners are elected from five single member districts for staggered four-year terms. One Commissioner serves as the Chairperson of the Board for a one-year term and is selected by the other members of the Board. Weekly meetings are held in the Commission Meeting Room on the 3rd floor of the County Courthouse every Wednesday at 9:00 a.m. and are open to the public. Public broadcast of meetings, with closed captioning, can be viewed on KPTS Channel 8 or at www.sedgwickcounty.org. Rebroadcasts are aired on Wichita’s Cable Channel 7 each Wednesday at 6:00 p.m. and Saturday and Sunday at 10:00 a.m.

Advisory Boards and Committees

As mentioned above, the Sedgwick County Board of County Commissioners has the power to appoint Sedgwick County citizens to Advisory Boards and Committees through resolutions. These citizens provide hours of valuable service and input to the County Commission. Examples of Advisory Boards and

Committees appointed by County Commission Resolution are as follows:

- Alcohol and Drug Abuse Advisory Board
- Aging Council
- Animal Care Advisory Board
- Arts and Humanities Council
- Building Examiners and Appeals
- Central Plains Quad County Planning Forum
- Community Housing Services
- Coordinated Transit District
- Developmental/Physical Disabilities Advisory Board
- Electrical Examiners and Appeals
- Employee Suggestion Awards Committee
- Fire Code Board of Appeals
- Forensic Science Center Advisory Board
- Grievance Board
- Board of Health
- Human Services Board
- Juvenile Corrections Advisory Board
- Kansas Coliseum Advisory Board
- Metropolitan Area Planning Commission
- Mechanical Examiners and Appeals
- Mental Health Advisory Board
- Plumbing Examiners and Appeals
- Public Building Commission
- SCKEDD Executive Committee
- Sheriff’s Civil Service Board
- Solid Waste Management Committee
- Wichita Airport Authority
- Zoning Appeals Board

Goals & Initiatives

- Establish, maintain and nurture partnerships to ensure effective and efficient delivery of service
- Train, encourage and recognize employees for hard work, creativity and innovation in delivering quality public services
- Foster two-way communication with citizens and employees to build trust, confidence and teamwork, and to ensure informed decisions
- Allocate and use resources for basic and essential services that are responsive to the changing needs of our community

Budget Adjustments

Changes to the Board of County Commissioners’ 2009 budget reflect increases in benefits costs and a 4.0 percent salary pool for employees. The budget also reflects the 3.0 percent increase in contractals, commodities, and capital equipment from the 2008 Adopted budget.

Budget Adjustments From Previous Fiscal Year

- No significant overall budgetary adjustments

Expenditures Revenue FTEs

Total - - -

Budget Summary by Category

Budget Summary by Fund

	2007 Actual	2008 Adopted	2008 Revised	2009 Budget	% Chg. 08-09		2008 Revised	2009 Budget
Expenditures						Expenditures		
Personnel	627,027	645,828	645,828	672,533	4.1%	General Fund	707,109	735,653
Contractual Services	49,163	50,000	50,000	51,120	2.2%			
Debt Service	-	-	-	-	-			
Commodities	3,191	11,281	11,281	12,000	6.4%			
Capital Improvements	-	-	-	-	-			
Capital Equipment	-	-	-	-	-			
Interfund Transfers	-	-	-	-	-			
Total Expenditures	679,380	707,109	707,109	735,653	4.0%	Total Expenditures	707,109	735,653
Revenue								
Taxes	-	-	-	-	-			
Intergovernmental	-	-	-	-	-			
Charges For Service	-	-	-	-	-			
Other Revenue	509	1,082	1,082	530	-51.0%			
Total Revenue	509	1,082	1,082	530	-51.0%			
Full-Time Equivalents (FTEs)	7.00	7.00	7.00	7.00	0.0%			

Budget Summary by Program

Program	Fund	Expenditures				% Chg. 08-09	Full-Time Equivalents (FTEs)		
		2007 Actual	2008 Adopted	2008 Revised	2009 Budget		2008 Adopted	2008 Revised	2009 Budget
Commission	110	679,380	707,109	707,109	735,653	4.0%	7.00	7.00	7.00
Total		679,380	707,109	707,109	735,653	4.0%	7.00	7.00	7.00

