



Deborah Donaldson
 Director of Human Services
 635 N. Main
 Wichita, Kansas 67203
 316-660-7670
ddonalds@sedgwick.gov

Mission:

- Human Services is an integrated system that enhances its customers ability to be more productive, healthy, and live independently.

The Division of Human Services delivers a variety of comprehensive services that assist County citizens in maintaining their health and well-being. These services include mental health services through Comprehensive Community Care of Sedgwick County (COMCARE), assistance to the developmentally disabled through the Sedgwick County Developmental Disability Organization (CDDO), and assistance to older adults from the Department on Aging and Central Plains Area Agency on Aging.

The Director's Office negotiates contracts and agreements to reduce the cost when medications are purchased for customers served by the various departments. Efforts and involvement in working to reduce healthcare costs continues at the local, state, and national level.

The Director's Office also strives to optimize departments' performance through a coordination of efforts and resources whenever possible. The office is also involved in a number of health promotion efforts such as the NACO prescription drug discount card to the

Budget Adjustments:

Item:	Amount:
• Non Profit Chamber Support	\$45,000
• Homeless Overflow Shelter Funding	\$12,500
Total	\$57,500

community. This prescription discount card has been made available to residents of Sedgwick County and primarily benefits the uninsured and underinsured. It is accepted by over 80 pharmacies in the area and offers an average discount of 20 percent on each prescription.

The Division provides services directly or through contracts and supports a community environment that enhances a person's ability to live a productive life. The defined populations served within the Division are the disabled, people dealing with aging issues, or those whose behavior and actions are of concern to the community. The Division also has a prevention focus with funds and programs devoted to this area.

One such prevention initiative began in 2006 with the Sedgwick County Offender Assessment Program

Budget Summary by Category

	2006 Actual	2007 Adopted	2007 Revised	2008 Budget	% Chg. 07-08
Expenditures					
Personnel	290,537	299,178	299,178	284,873	-4.8%
Contractual Services	127,819	15,800	15,800	70,197	344.3%
Debt Service	-	-	-	-	
Commodities	799	300	300	300	0.0%
Capital Improvements	-	-	-	-	
Equipment	-	-	-	-	
Interfund Transfers	-	-	-	-	
Total Expenditures	419,155	315,278	315,278	355,370	12.7%
Revenue					
Taxes	-	-	-	-	
Intergovernmental	-	-	-	-	
Charges For Service	-	-	-	-	
Other Revenue	646	-	-	-	
Total Revenue	646	-	-	-	
Full-Time Equivalents (FTEs)	3.00	3.00	3.00	3.00	0.0%

Budget Summary by Fund

	2007 Revised	2008 Budget
Expenditures		
COMCARE	315,278	355,370
Total Expenditures	315,278	355,370



(SCOAP) began in mid 2006 to better address the needs of non-violent individuals whose mental illness is at the core of the arresting behavior. In some circumstances, these individuals can be redirected at the outset, away from incarceration and into community-based mental health treatment. This program has been placed under the direction of COMCARE.

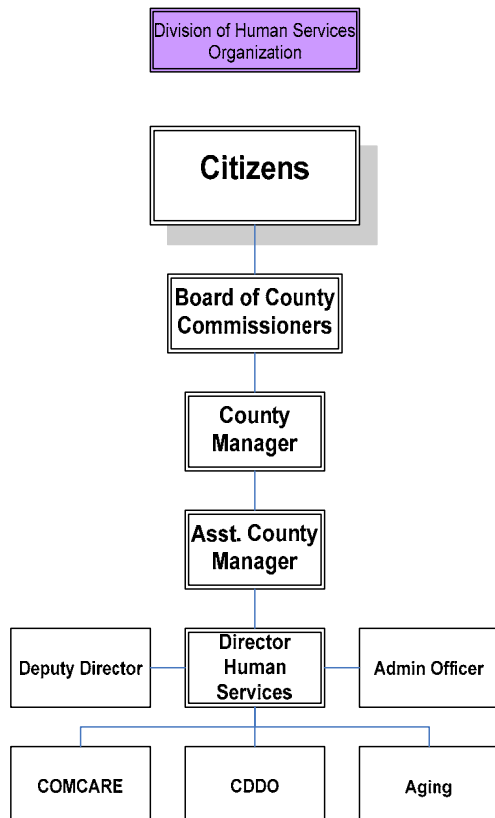
The Human Services Division's outcomes include:

- Move from institutions to the community
- Prevention of institutional care, i.e., state hospital or nursing home, etc.
- People served participate as a member of the community
- People served are supported to reach their full potential

These outcomes are accomplished through:

- Creative, innovative support and services
- Best practices
- Evidence-based approaches
- Supervisory/Administrative oversight

The organizational chart displayed at the bottom demonstrates where the Division of Human Services and its departments lie within the County structure.



The \$57,500 increase in contractals for 2008 is the result of two initiatives previously funded from the COMCARE Grant Fund. The first is \$45,000 for the Non-profit Chamber of Commerce (NPCOC) and the second is for the \$12,500 commitment to the Homeless Overflow Shelter.

NPCOC purpose is to bring together leaders of nonprofit organizations interested in enhancing the quality of community services, provide a collective voice for nonprofits, communicate with funders and government, share resources and educate to build internal capacity and influence public policy in order to build community capacity. Other community members include Catholic Charities, Goodwill Industries, Envision, Episcopal Social Services, Family Consultation Services, Kansas Food Bank, Ketch, SRS, Wichita State, and YWCA.

Human Services, United Way and the City of Wichita have partnered equally to fund an emergency overflow shelter for the homeless for approximately ten years. This partnership sheltered 514 individuals from December 1, 2006 through February 28, 2007, since the shelter is only open during the coldest part of the year when other shelters have reached capacity.