

Criminal Justice Coordinating Council

Population Report & Program Trends

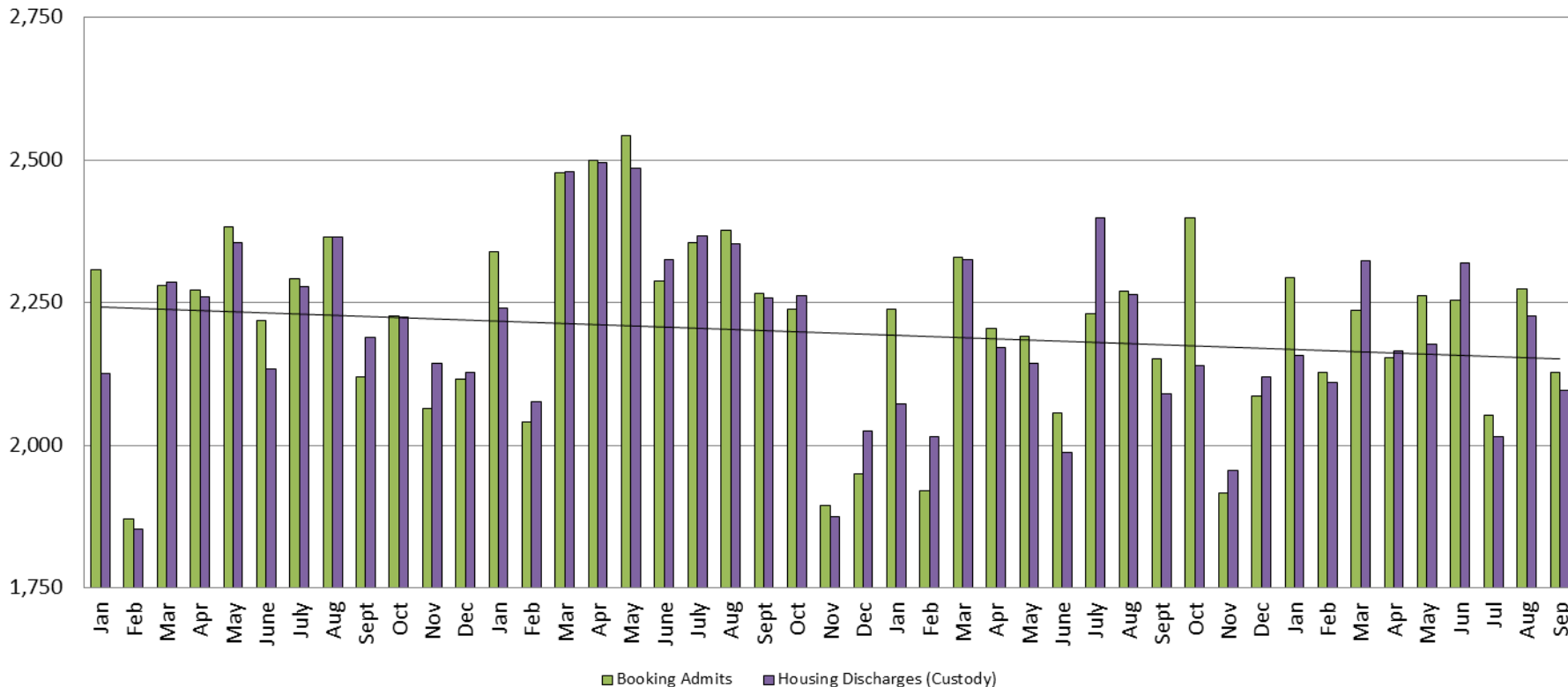
October 2016



Sedgwick County...
working for you

Detention Facility

Booking Admits & Housing Discharges from Custody January 2013 - Present



Housing Discharges for September

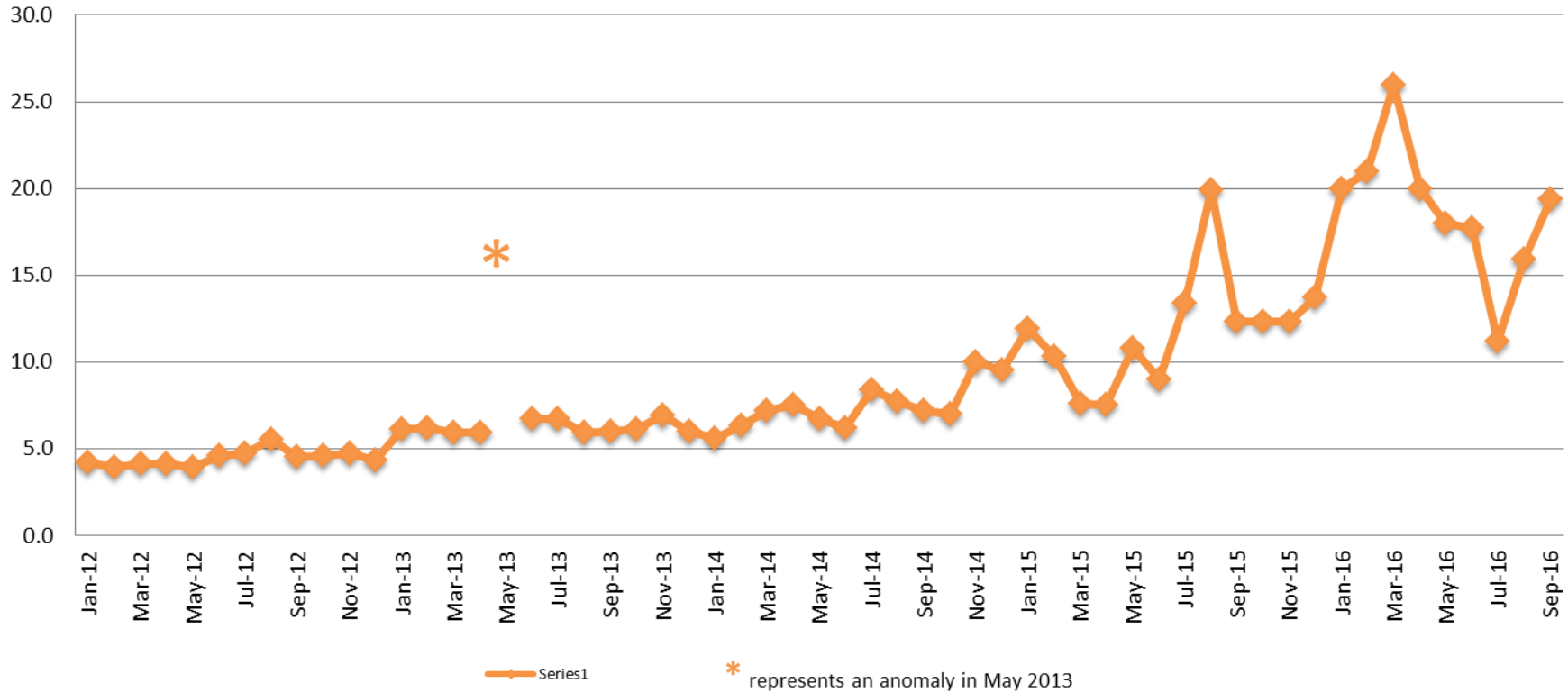
2014 = 2,258
 2015 = 2,091
 2016 = 2,096

Bookings for September

2014 = 2,267
 2015 = 2,151
 2016 = 2,128



Average Length of Stay: Booking (Hours) January 2012 - Present



September

2012 = 4.5
 2013 = 6.0
 2014 = 7.2
 2015 = 12.3
 2016 = 19.4

September YTD Avg.

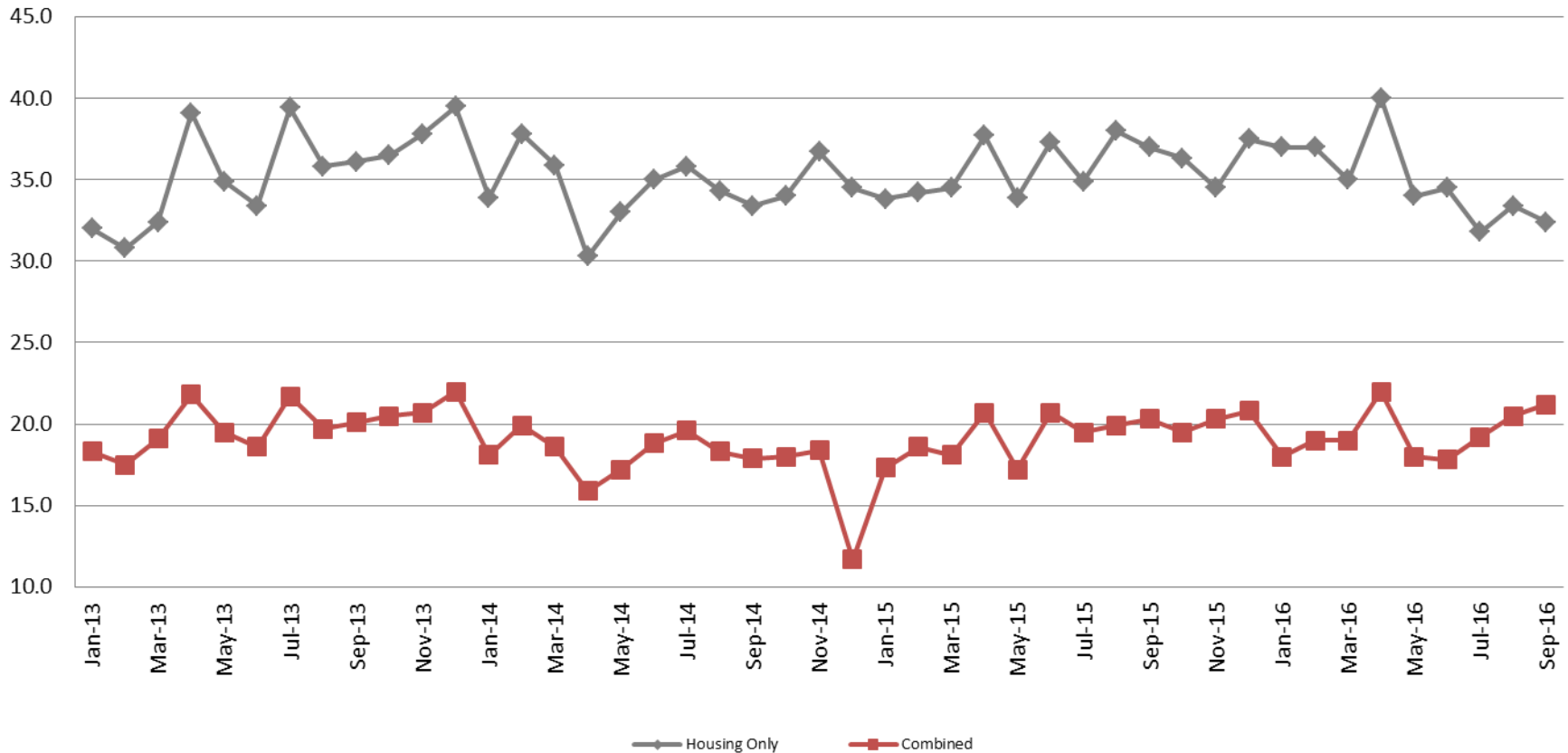
2012 = 4.4
 2013 = 7.3
 2014 = 7.0
 2015 = 11.4
 2016 = 18.8

(data obtained from detention facility)

Average Length of Stay: Housing & Combined (Days)

January 2013 - Present

Present



September Housing

2013 = 36.1
 2014 = 33.4
 2015 = 37.0
 2016 = 32.4

September Housing YTD Avg.

2013 = 34.9
 2014 = 34.4
 2015 = 35.7
 2016 = 35.0

September Combined

2013 = 20.1
 2014 = 17.9
 2015 = 20.3
 2016 = 21.2

September Combined YTD Avg.

2013 = 19.6
 2014 = 18.3
 2015 = 19.1
 2016 = 19.4

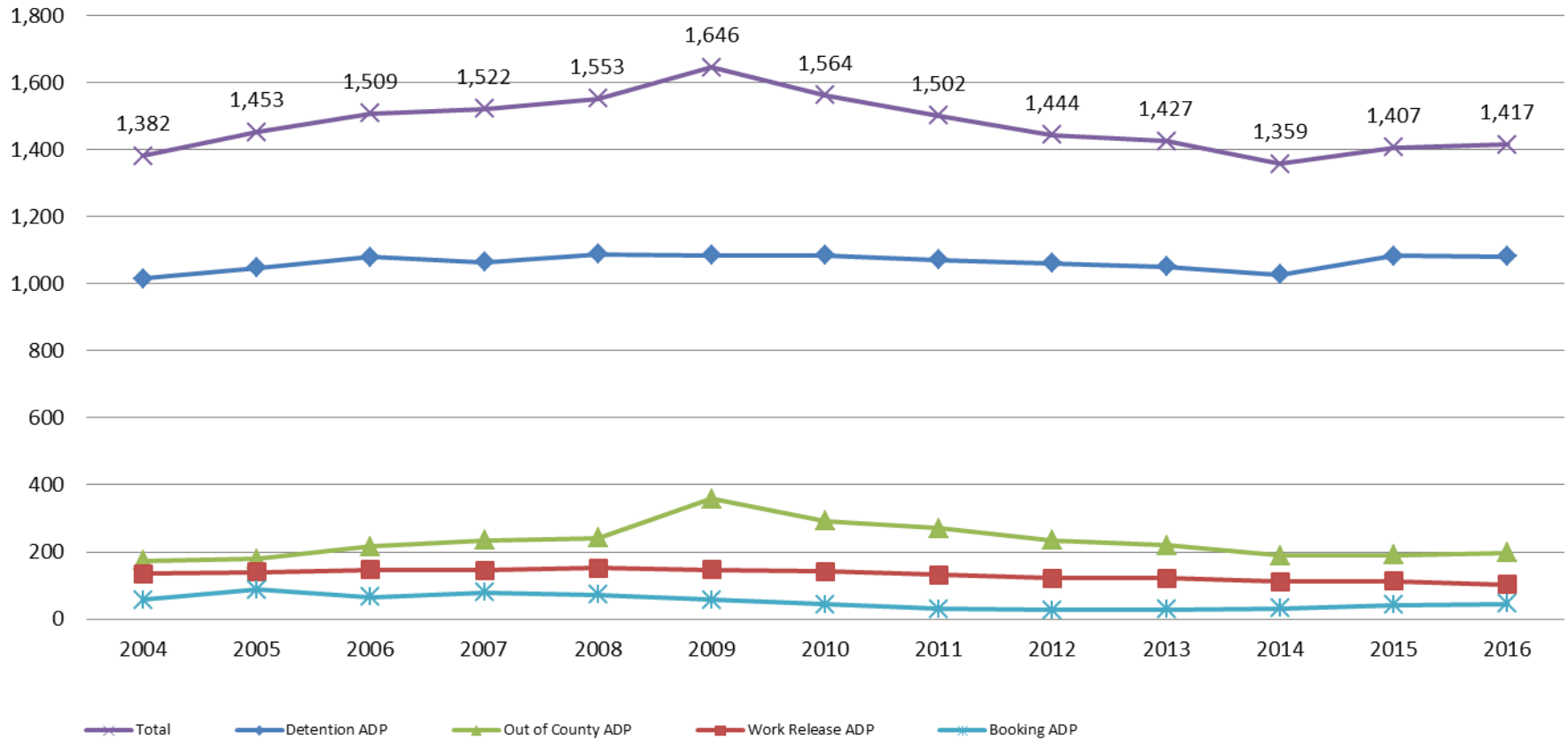


Sedgwick County...
 working for you

(data obtained from detention facility)

Jail: Annual Average Daily Population (ADP)

TRENDS: Booking, Detention, Work Release, & Out of County Annual ADP: 2004 - present



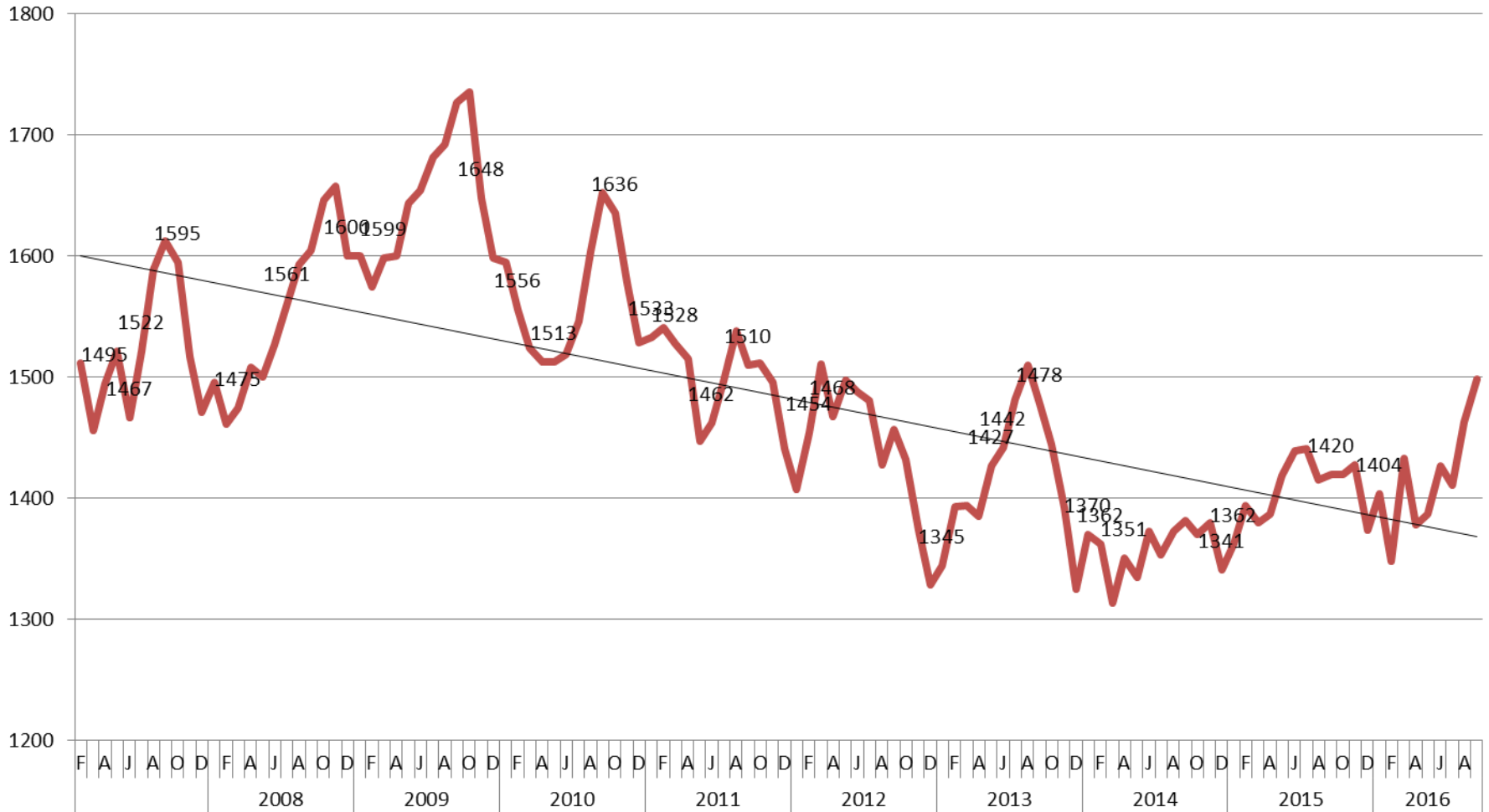
Sedgwick County...
working for you

(data obtained from detention facility)

TOTAL MONTHLY ADP: JAIL

(Booking, Detention Facility, Work Release, & Out of County)

2007 - present



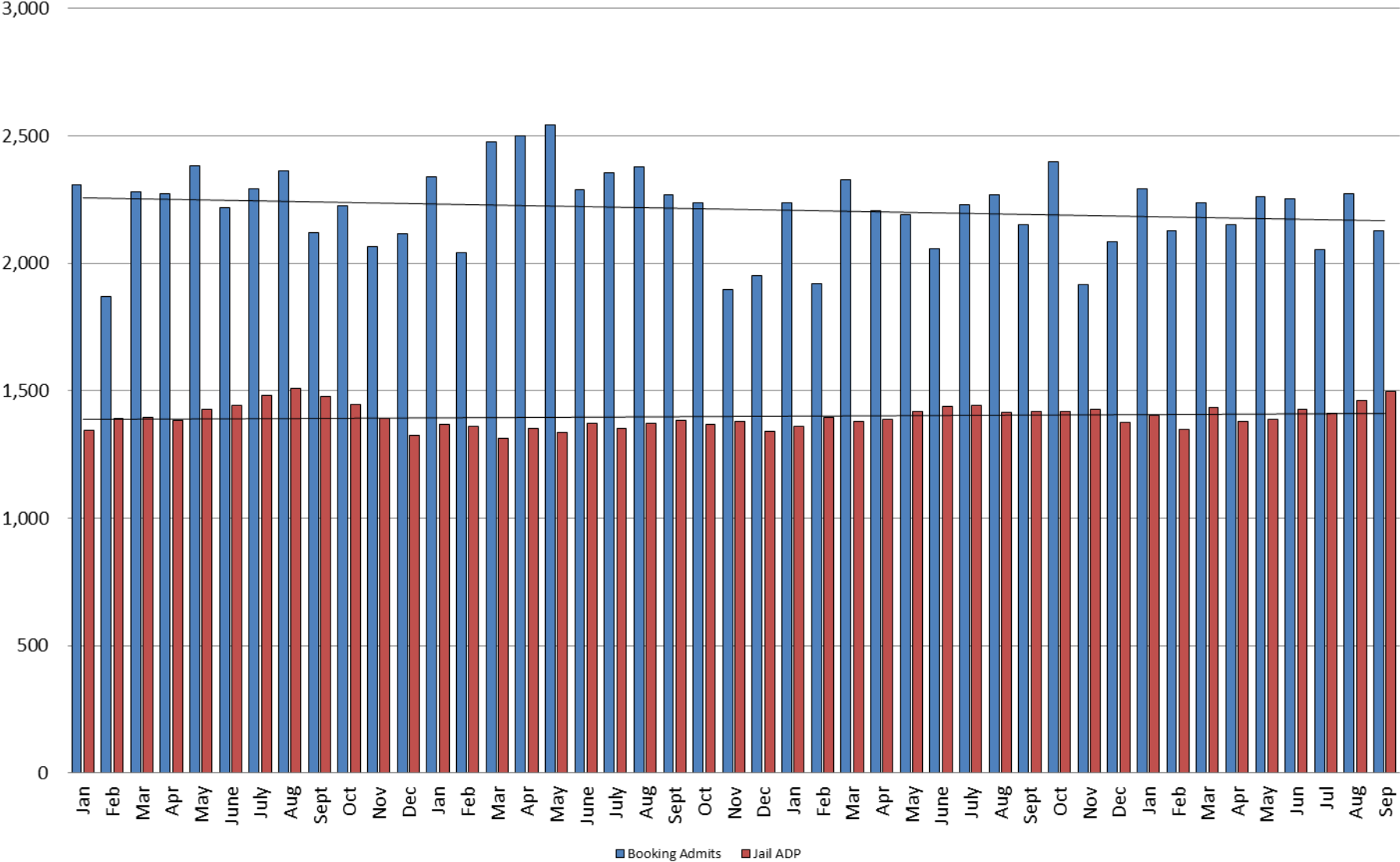
This slide shows total monthly ADP for individuals in booking, detention, work release and out-of county (combined)

(data obtained from detention facility)



Sedgewick County...
working for you

Booking Admits & Total Monthly ADP (Jail): 2013 - present

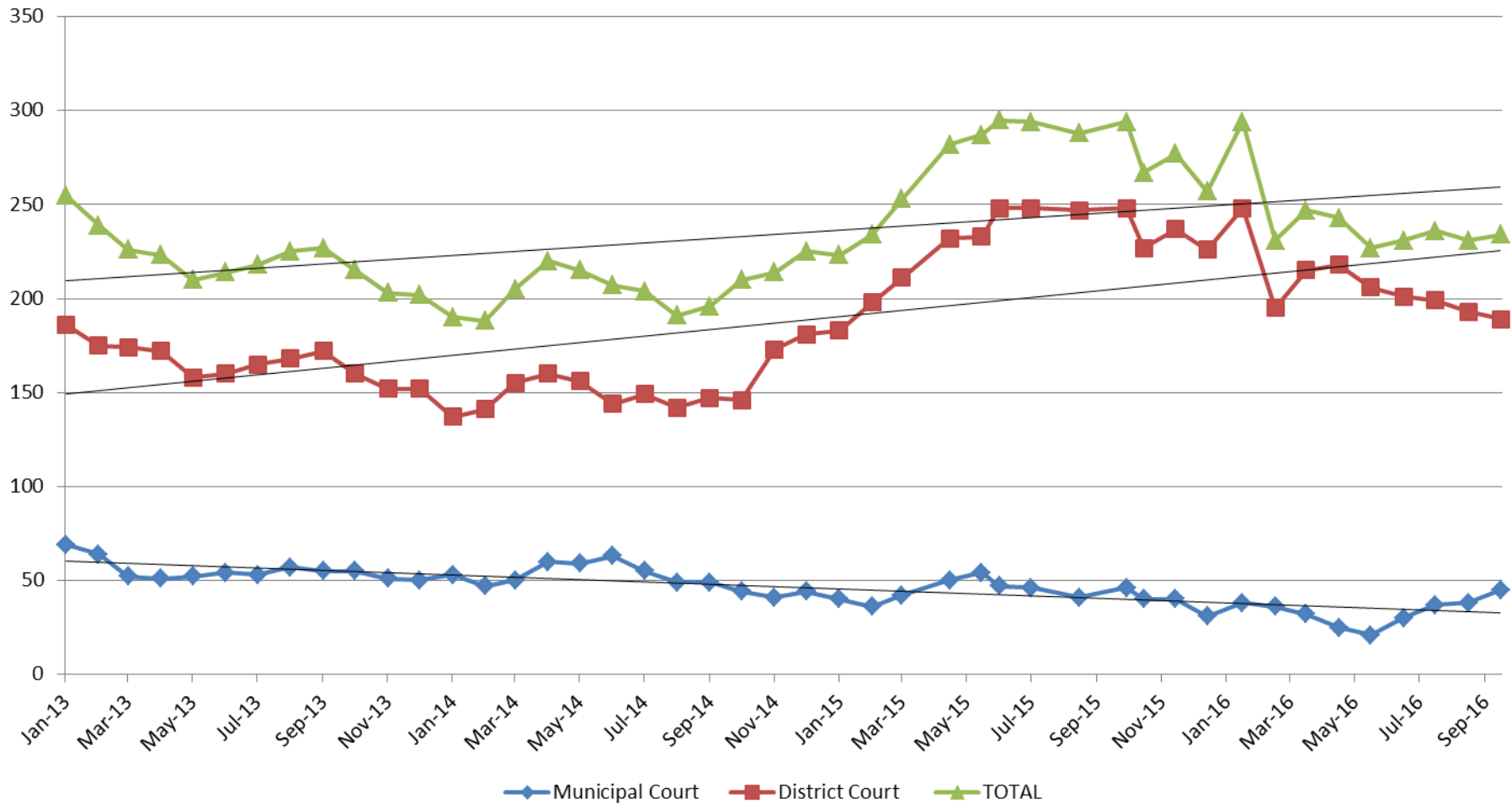


Jail includes individuals in booking, detention, work release and out-of county (combined)

(data obtained from detention facility)



Pretrial Services Program (PSP) Monthly ADP: January 2013 - Present



September	2013	2014	2015	2016
Municipal Court	55	49	46	45
District Court	172	147	248	189
TOTAL	227	196	294	234

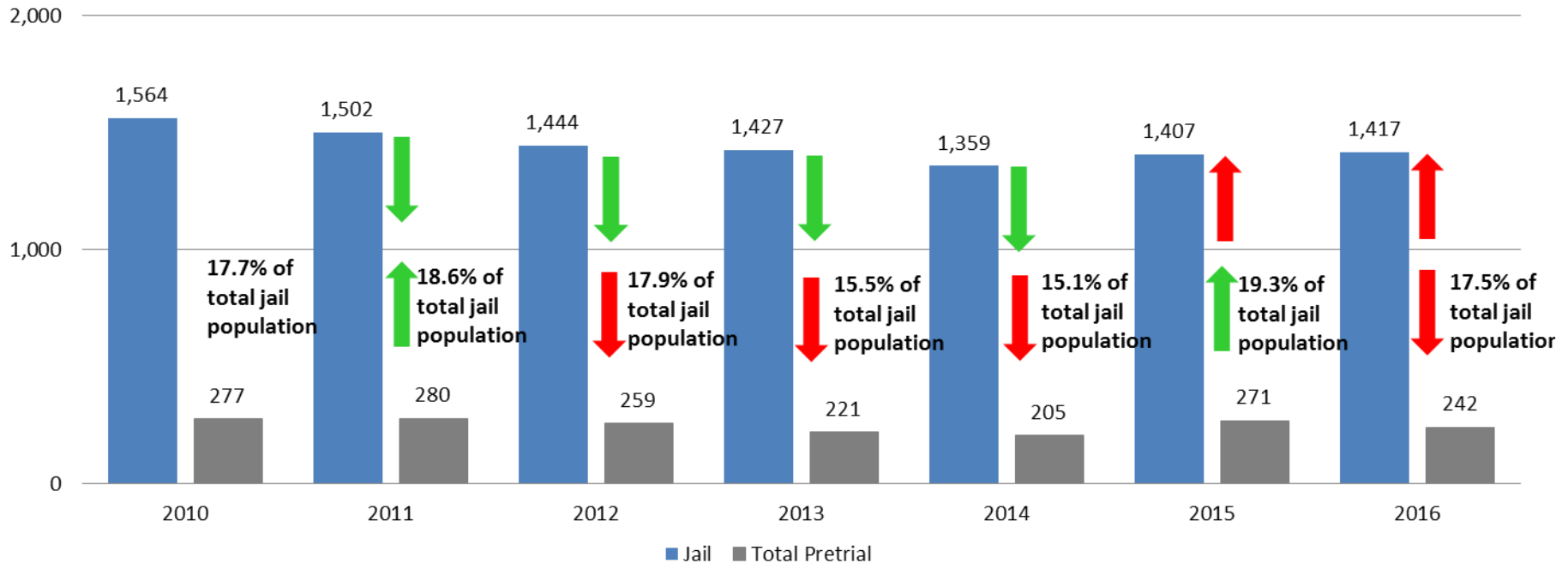
September YTD Avg.	2013	2014	2015	2016
Municipal Court	56	54	45	34
District Court	170	148	225	207
TOTAL	223	202	270	242



(data obtained from Pretrial Services)

Correlation: Total & PSP

Total Annual ADP: 2010 - Present



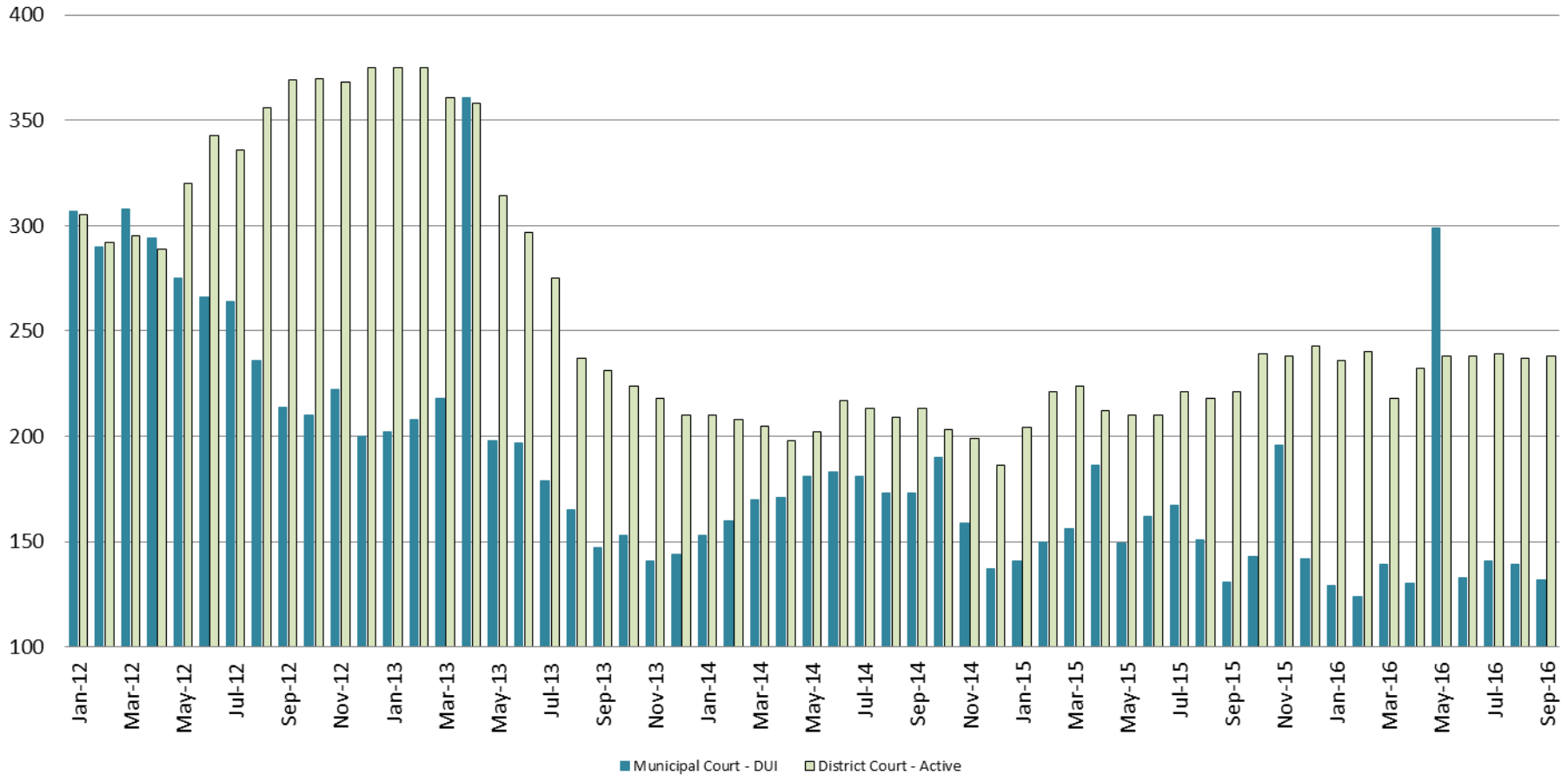
Arrows represent the overall increase/decrease of the population from year to year

Jail includes individuals in booking, detention, work release and out-of county (combined)



Diversion - Active Caseload

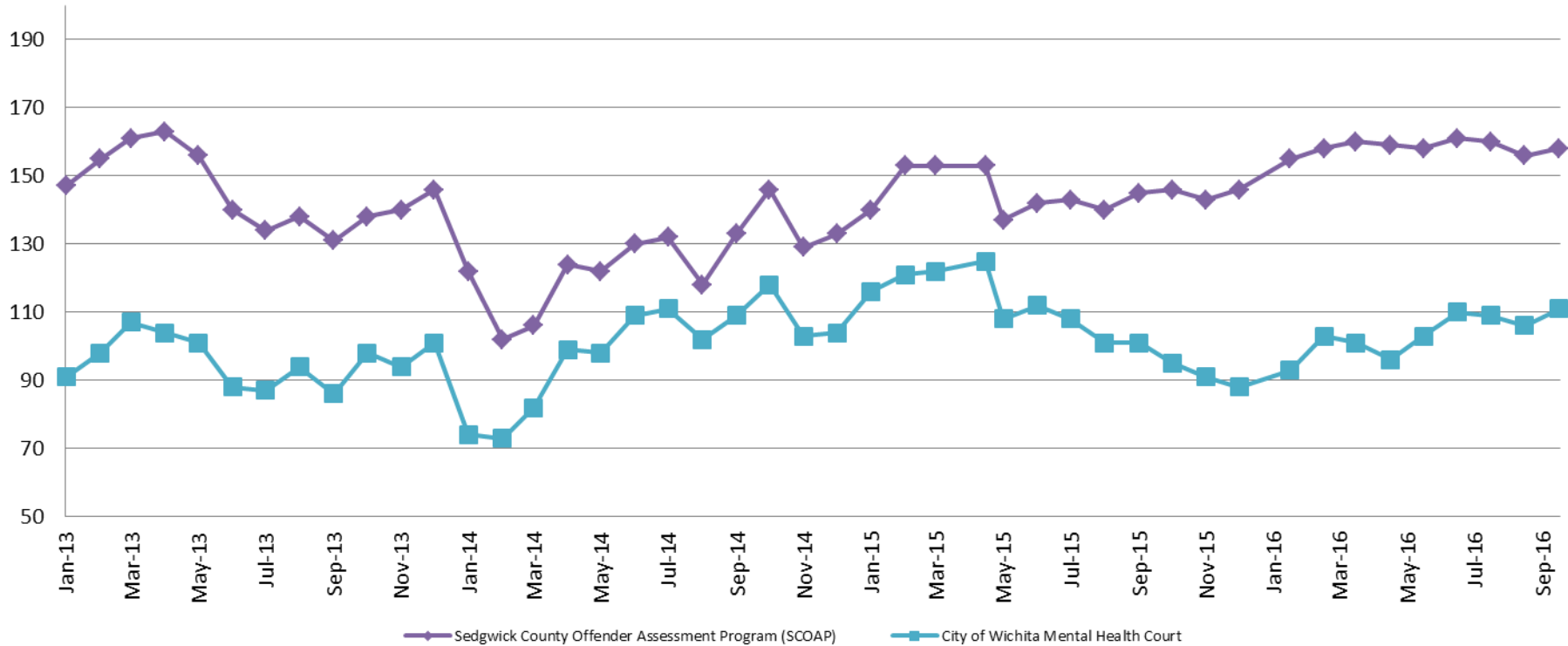
January 2012 - Present



<u>September</u>	<u>2013</u>	<u>2014</u>	<u>2015</u>	<u>2016</u>
Municipal Court- DUI	147	173	131	132
District Court- Active	231	213	221	238

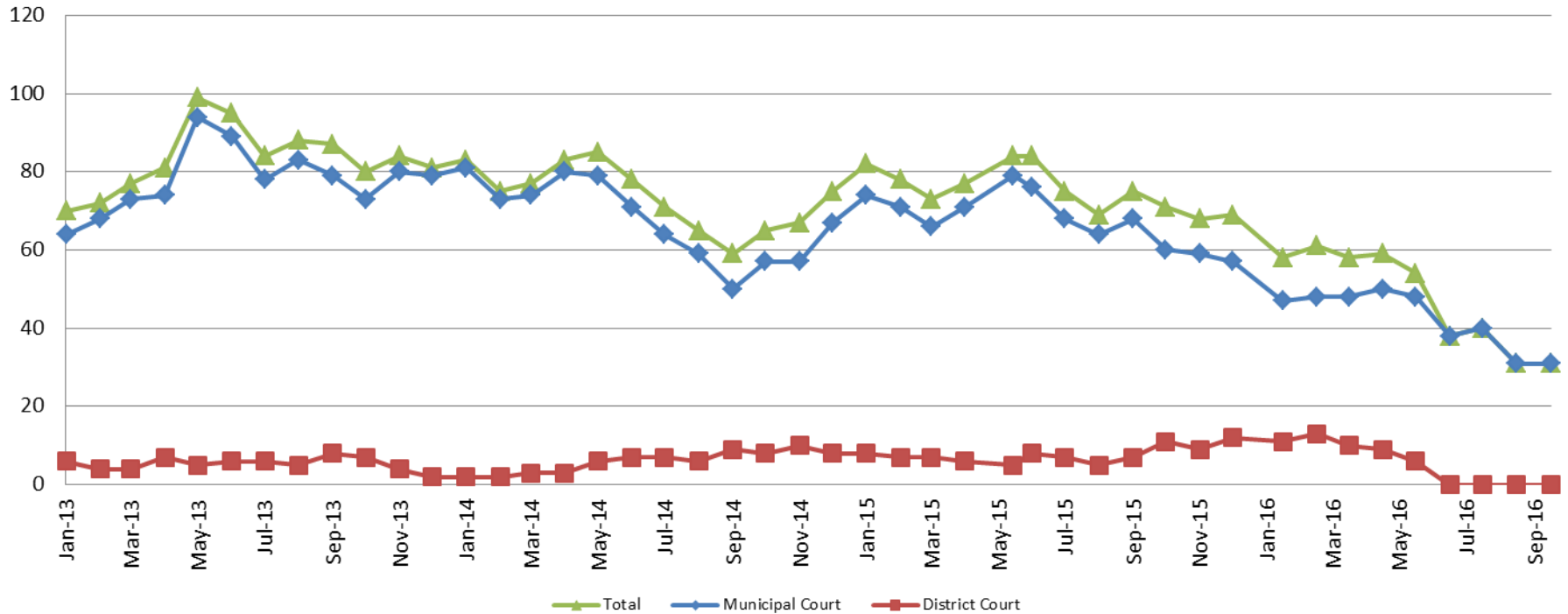
<u>September YTD Avg.</u>	<u>2013</u>	<u>2014</u>	<u>2015</u>	<u>2016</u>
Municipal Court	208	172	155	152
District Court	314	208	216	235

Mental Health - ADP 2013 - present



September:	2013	2014	2015	2016
SCOAP	131	133	145	158
CoW – MH Court	89	109	101	111
September YTD Avg.	2013	2014	2015	2016
SCOAP	147	121	145	158
CoW – MH Court	95	95	113	104

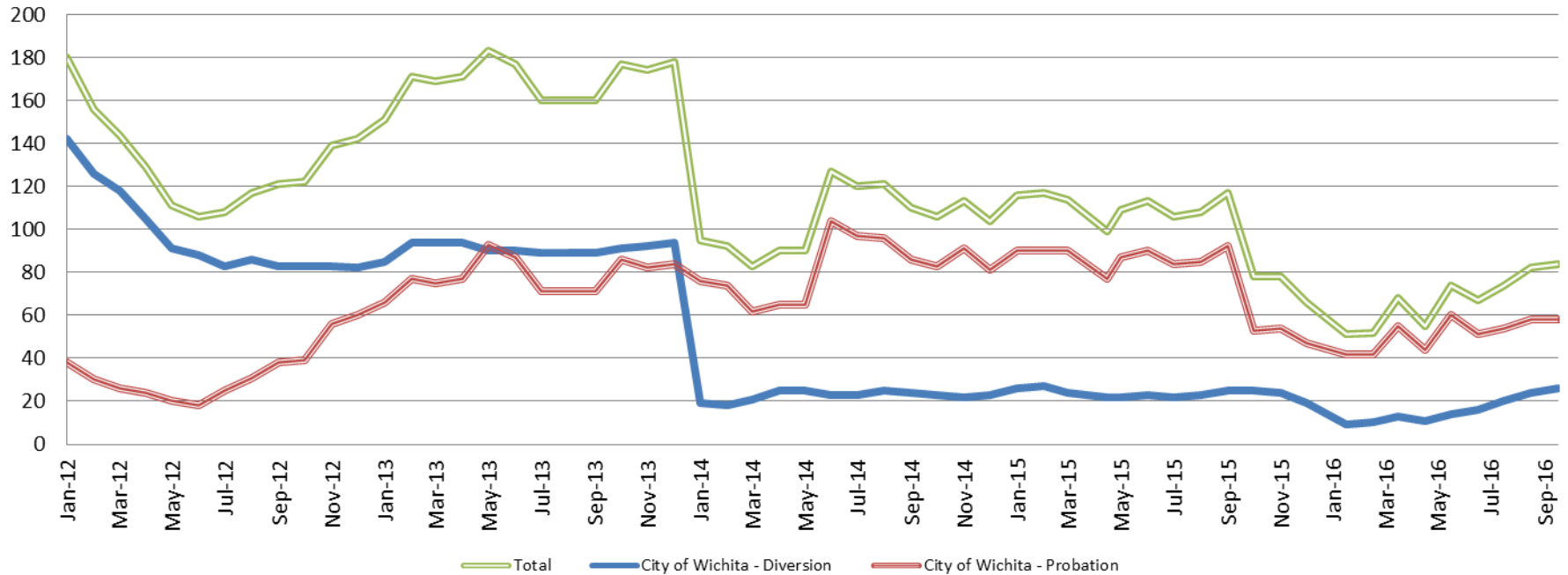
Day Reporting - Active Caseload 2013-present



September	2013	2014	2015	2016
Municipal Court	79	50	68	31
District Court	8	9	7	0*
TOTAL	87	59	75	31
September YTD Avg.	2013	2014	2015	2016
Municipal Court	78	70	71	42
District Court	6	5	7	5
TOTAL	84	75	77	48



Drug Court - City of Wichita ADP: 2012 - present



September - CoW Diversion

2013 = 89
2014 = 24
2015 = 25
2016 = 26

September YTD Avg.

2013 = 90
2014 = 23
2015 = 24
2016 = 16

September - CoW Probation

2013 = 71
2014 = 86
2015 = 92
2016 = 58

September YTD Avg.

2013 = 76
2014 = 81
2015 = 87
2016 = 52

September - CoW Total

2013 = 160
2014 = 110
2015 = 117
2016 = 84

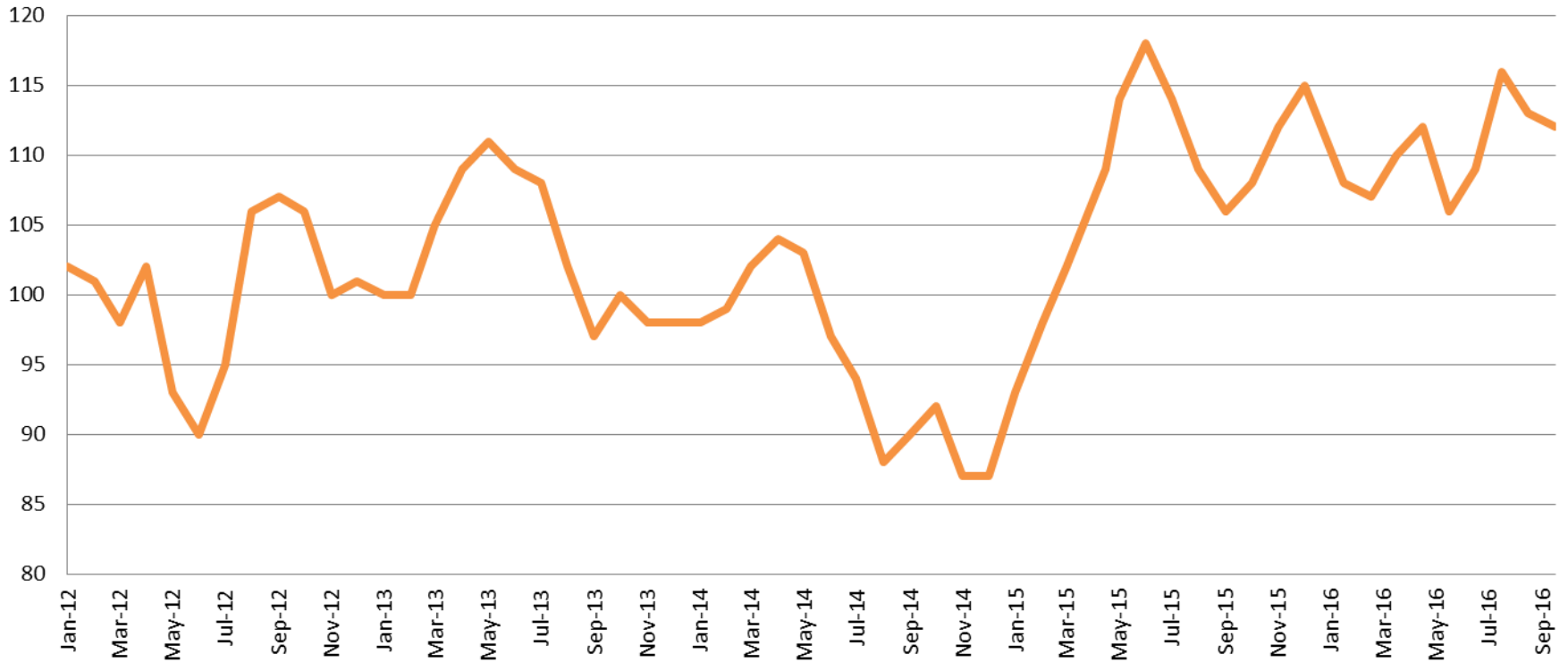
September YTD Avg.

2013 = 167
2014 = 103
2015 = 111
2016 = 67

(data obtained from CoW)



Drug Court - Sedgwick County ADP: 2012 - present



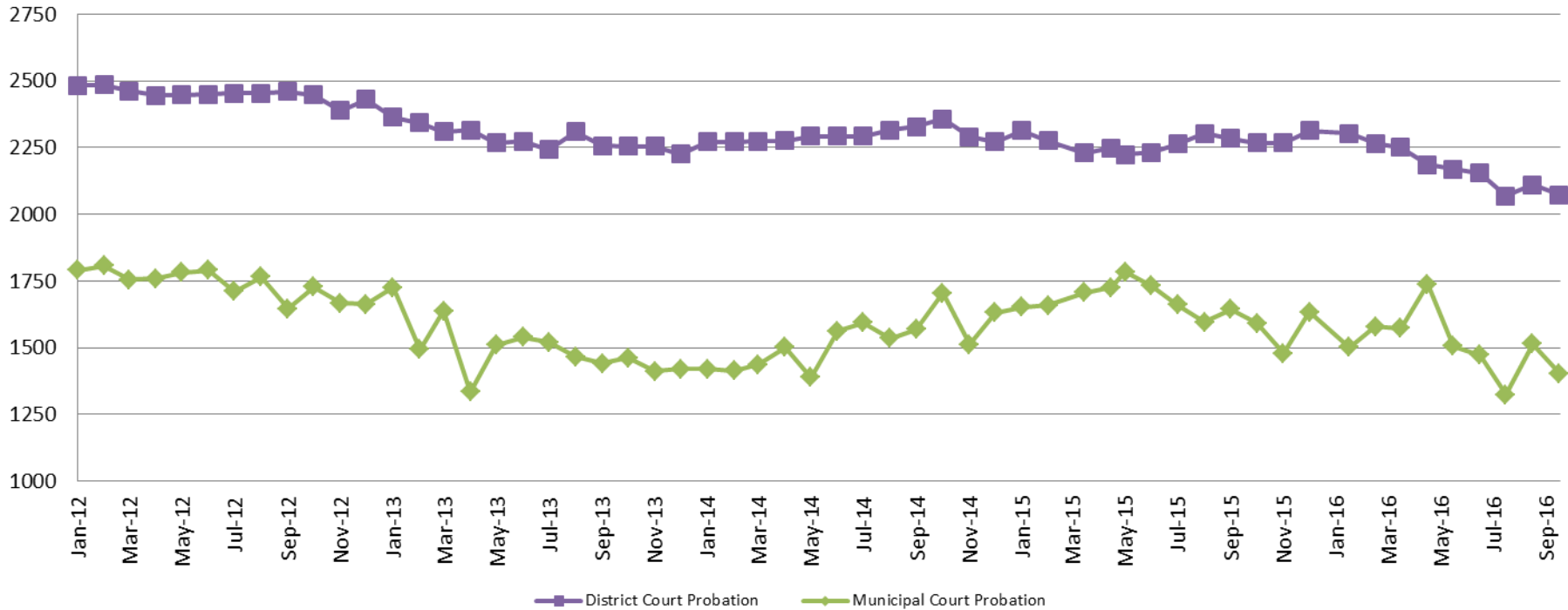
September - SG CO

2013 = 97
2014 = 90
2015 = 106
2016 = 112

September YTD Avg.

2013 = 105
2014 = 97
2015 = 107
2016 = 110

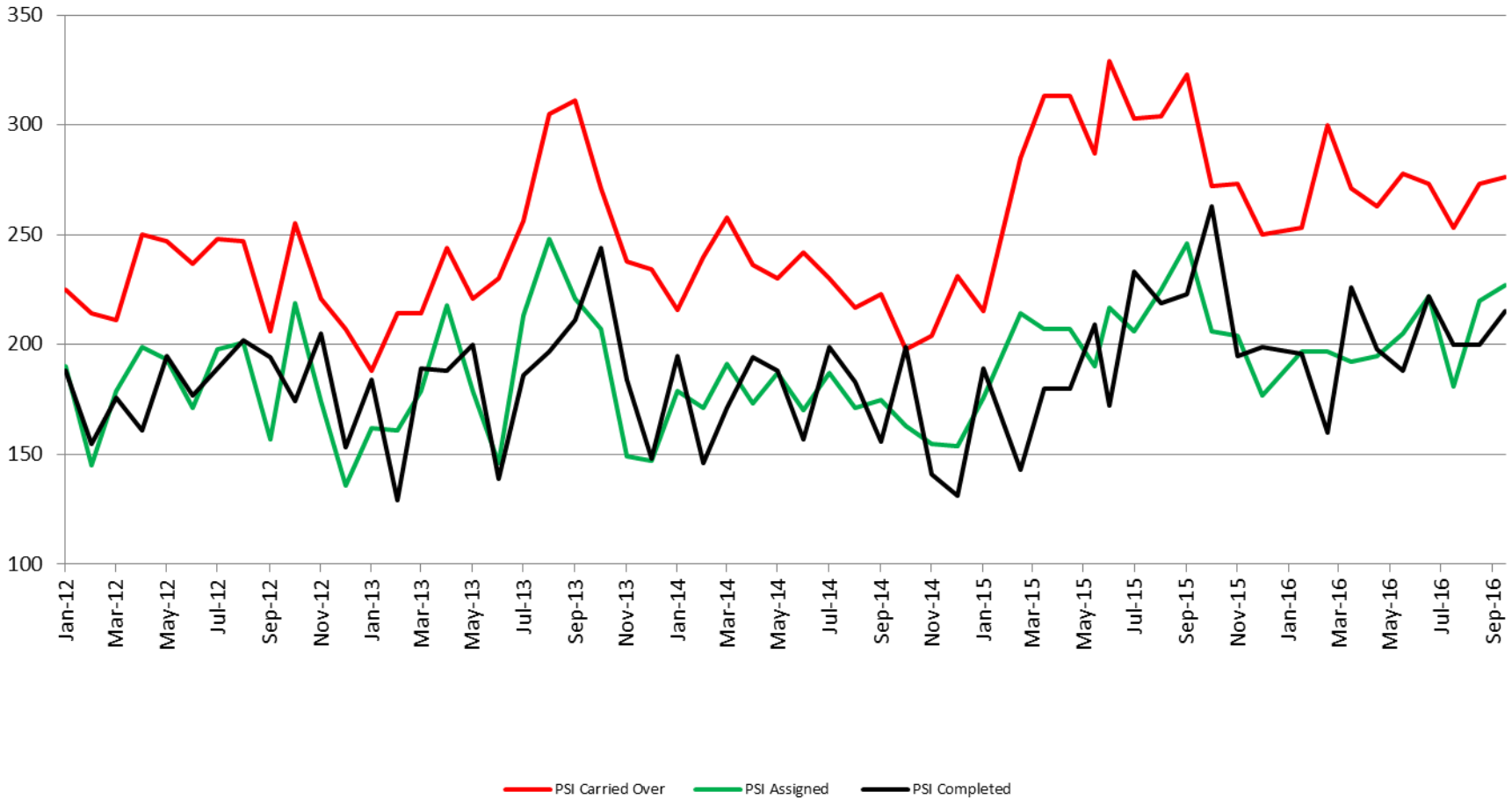
Probation - Active Caseloads 2012 - present



<u>September</u>	<u>2013</u>	<u>2014</u>	<u>2015</u>	<u>2016</u>
District Court	2,257	2,327	2,284	2,072
Municipal Court	1,441	1,569	1,644	1,403
<u>September YTD Avg.</u>	<u>2013</u>	<u>2014</u>	<u>2015</u>	<u>2016</u>
District Court	2,298	2,291	2,264	2,176
Municipal Court	1,518	1,491	1,684	1,512

(data obtained from CoW & District Court)

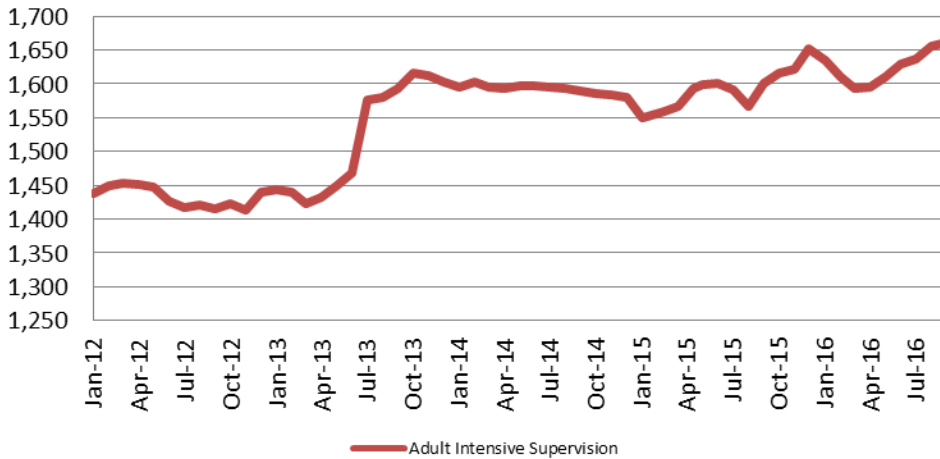
District Court Probation: Pre-Sentence Investigation 2012 - present



(data obtained from District Court)

Community Corrections

Adult Intensive Supervision Probation (AISP) ADP 2012 - present



<u>September</u>	<u>Sept. YTD Avg.</u>
2013 = 1,593	2013 = 1,489
2014 = 1,589	2014 = 1,595
2015 = 1,601	2015 = 1,580
2016 = 1,661	2016 = 1,625

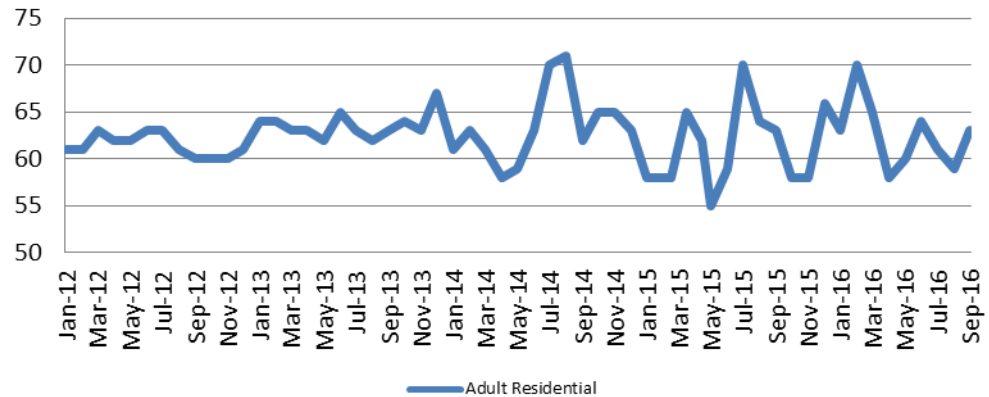
(data obtained from SG CO Dept. of Corrections)

*KDOC changed population count to include drug court, residential and AISP beginning July 2013.

Adult Residential: ADP 2012 - present

<u>September</u>	<u>Sept. YTD Avg.</u>
2013 = 63	2013 = 63
2014 = 62	2014 = 63
2015 = 63	2015 = 62
2016 = 63	2016 = 63

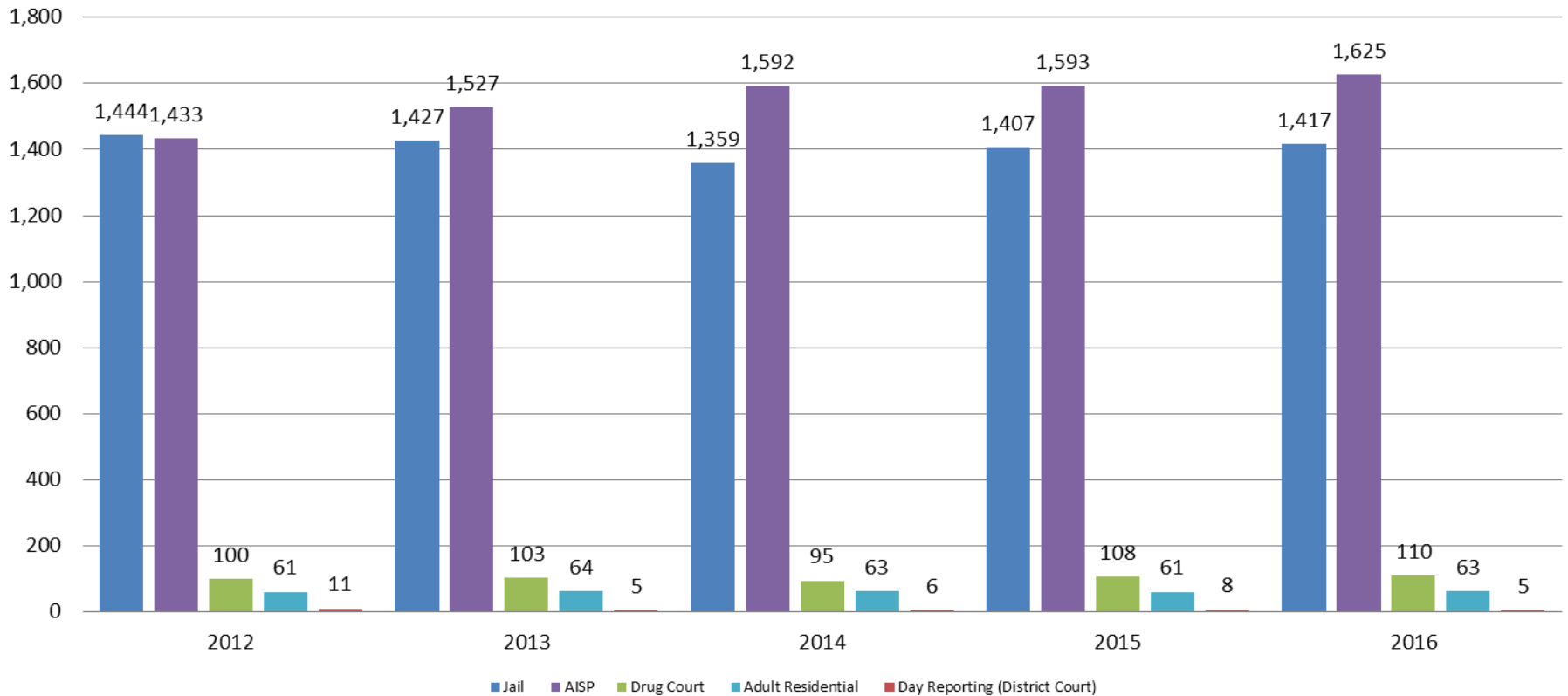
(data obtained from SG CO Dept. of Corrections)



— Adult Residential

Correlation: Total & Sedgwick County Programs (Adult)

Total Annual ADP: 2012 - Present



Jail includes individuals in booking, detention, work release and out-of county (combined)

(data obtained from detention facility, SG Dept. of Corrections, Pretrial Services, & CoW)



Correlation: Total & District Court Programs

Total Annual ADP: 2012 - Present

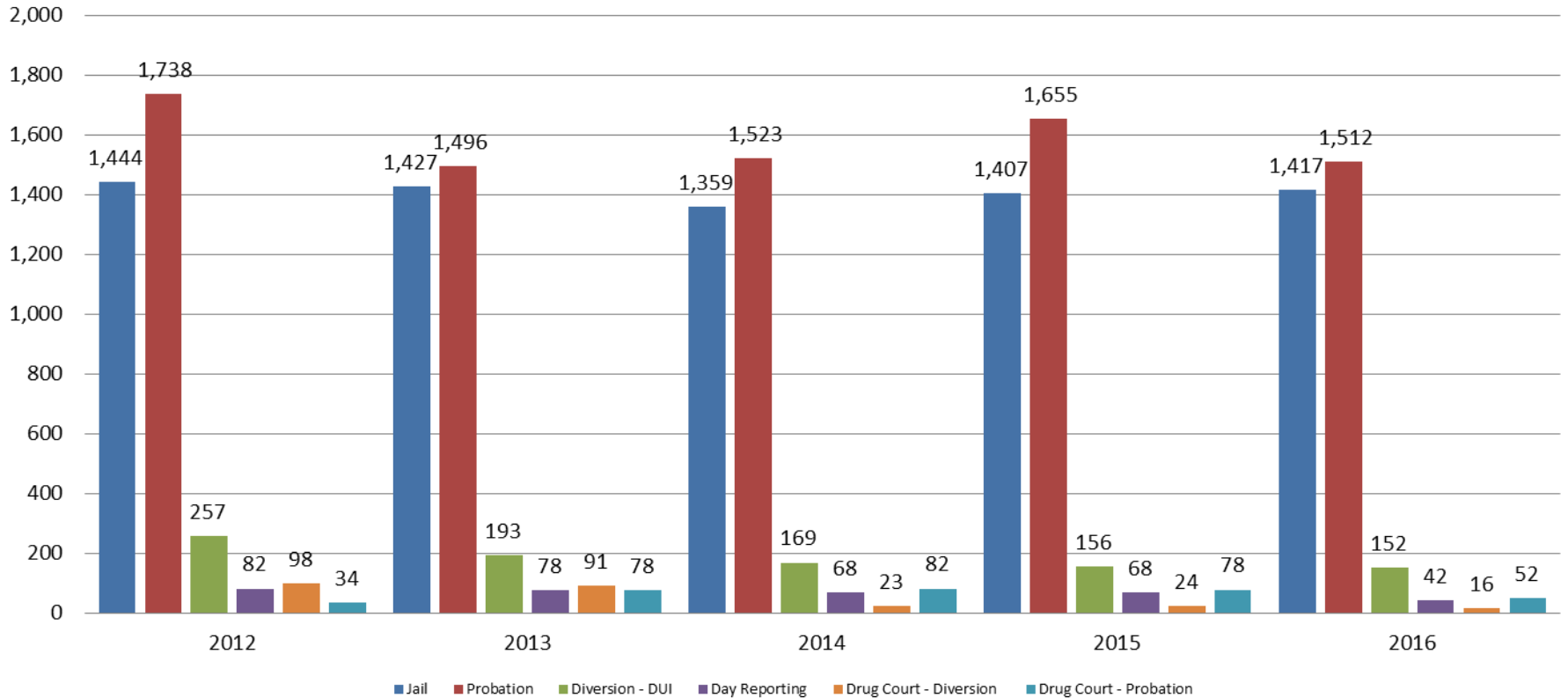


Jail includes individuals in booking, detention, work release and out-of county (combined)



Correlation: Total & City of Wichita / Municipal Court Programs

Total Annual ADP: 2012 - present

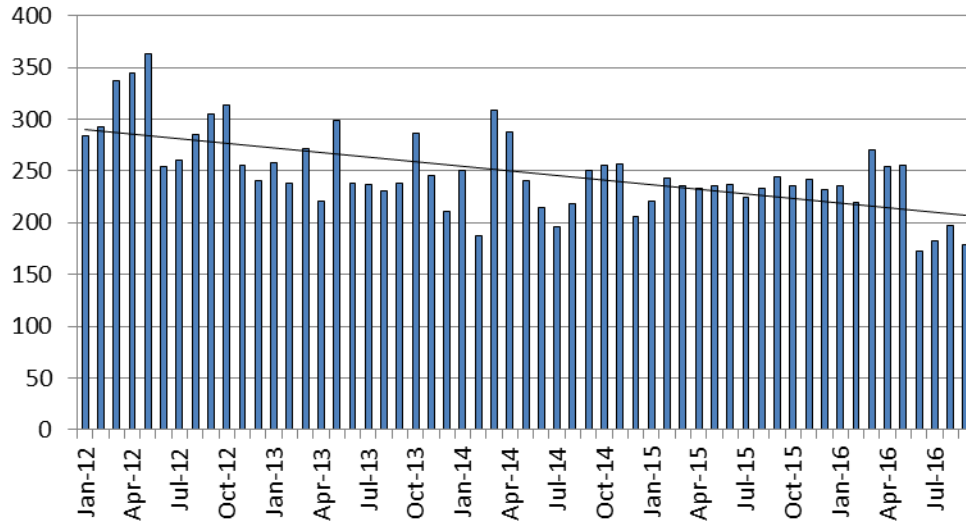


Jail includes individuals in booking, detention, work release and out-of county (combined)



Juvenile

JIAC Intakes: 2012 - present



September

2013 = 238
2014 = 250
2015 = 244
2016 = 179

September YTD Average

2013 = 248
2014 = 239
2015 = 234
2016 = 218

(data obtained from SG CO Dept. of Corrections)

September

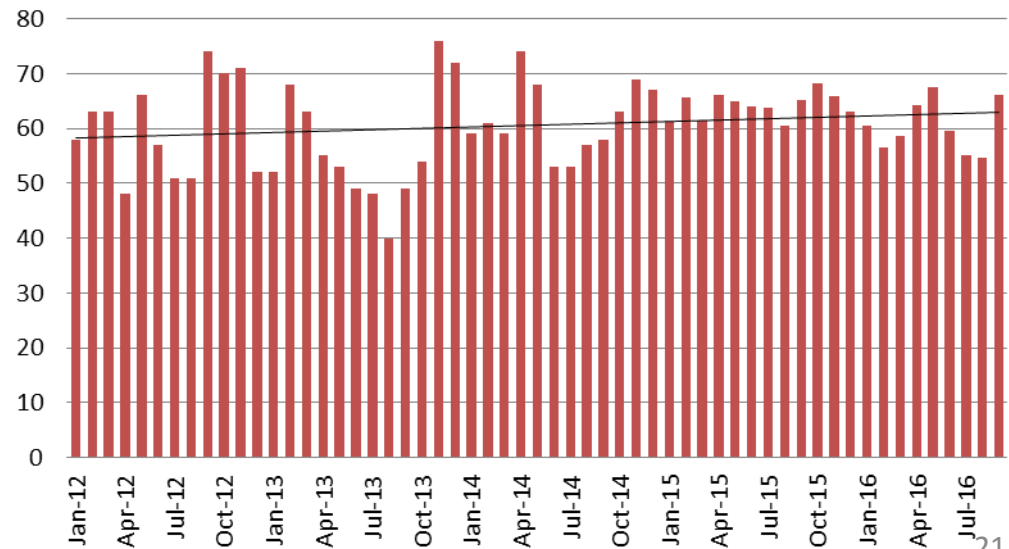
2013 = 49
2014 = 58
2015 = 65
2016 = 66

September YTD Avg.

2013 = 53
2014 = 60
2015 = 64
2016 = 60

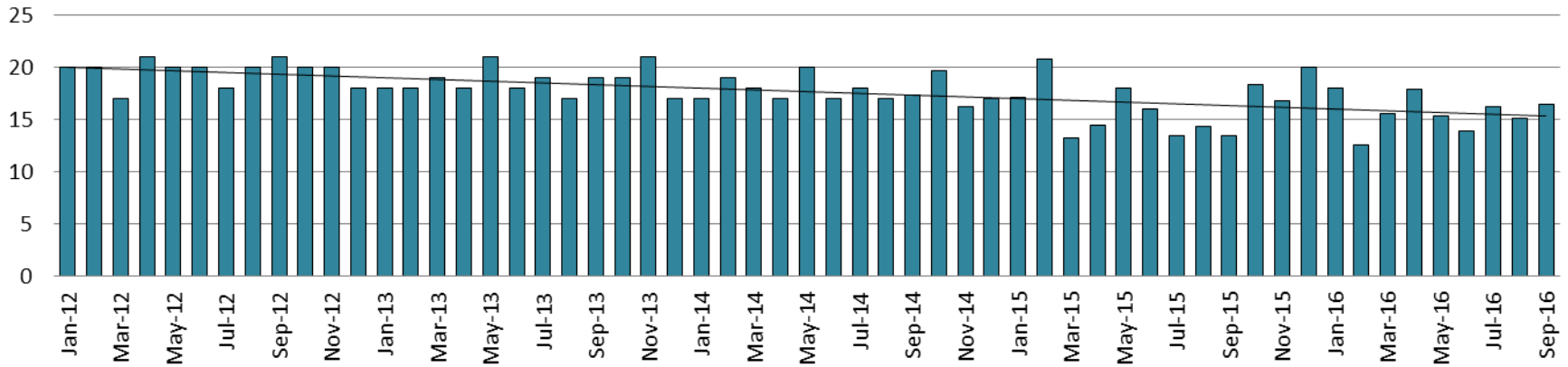
(data obtained from SG CO Dept. of Corrections)

JDF ADP: 2012 - present

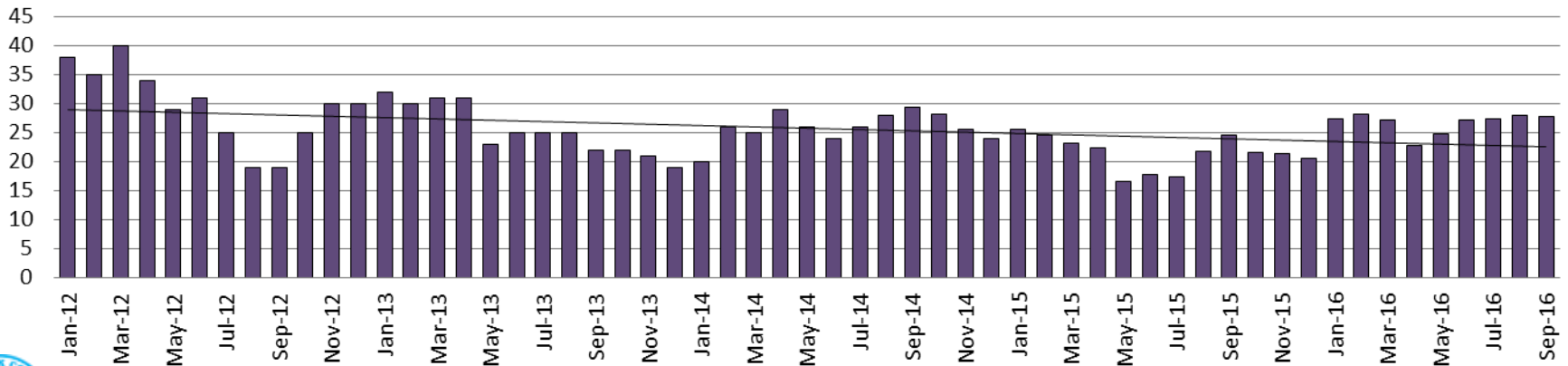


Juvenile Detention Alternatives

Juvenile Residential Facility (JRF) ADP: 2012 - present

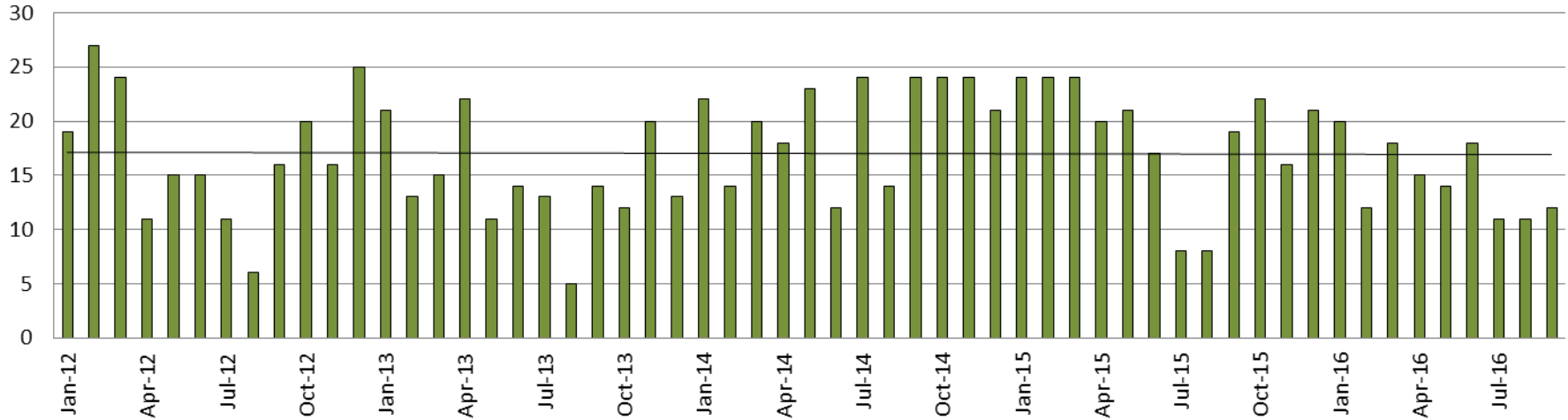


Home-Based Supervision ADP: 2012 - present

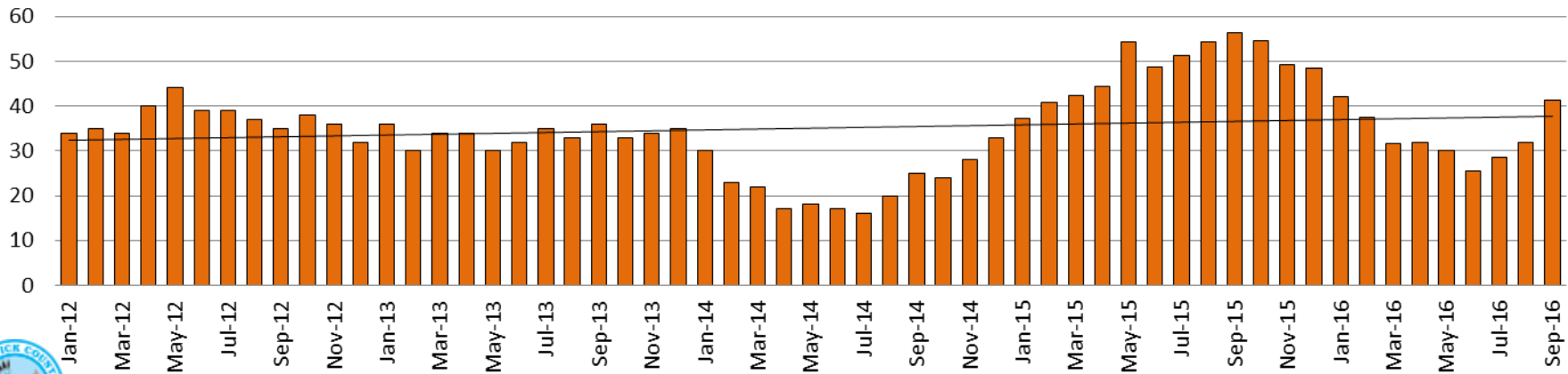


Juvenile Detention Alternatives

Weekend Alternative Detention Program 2012 - present



Detention Advocacy Case Management Services ADP: 2012 - present



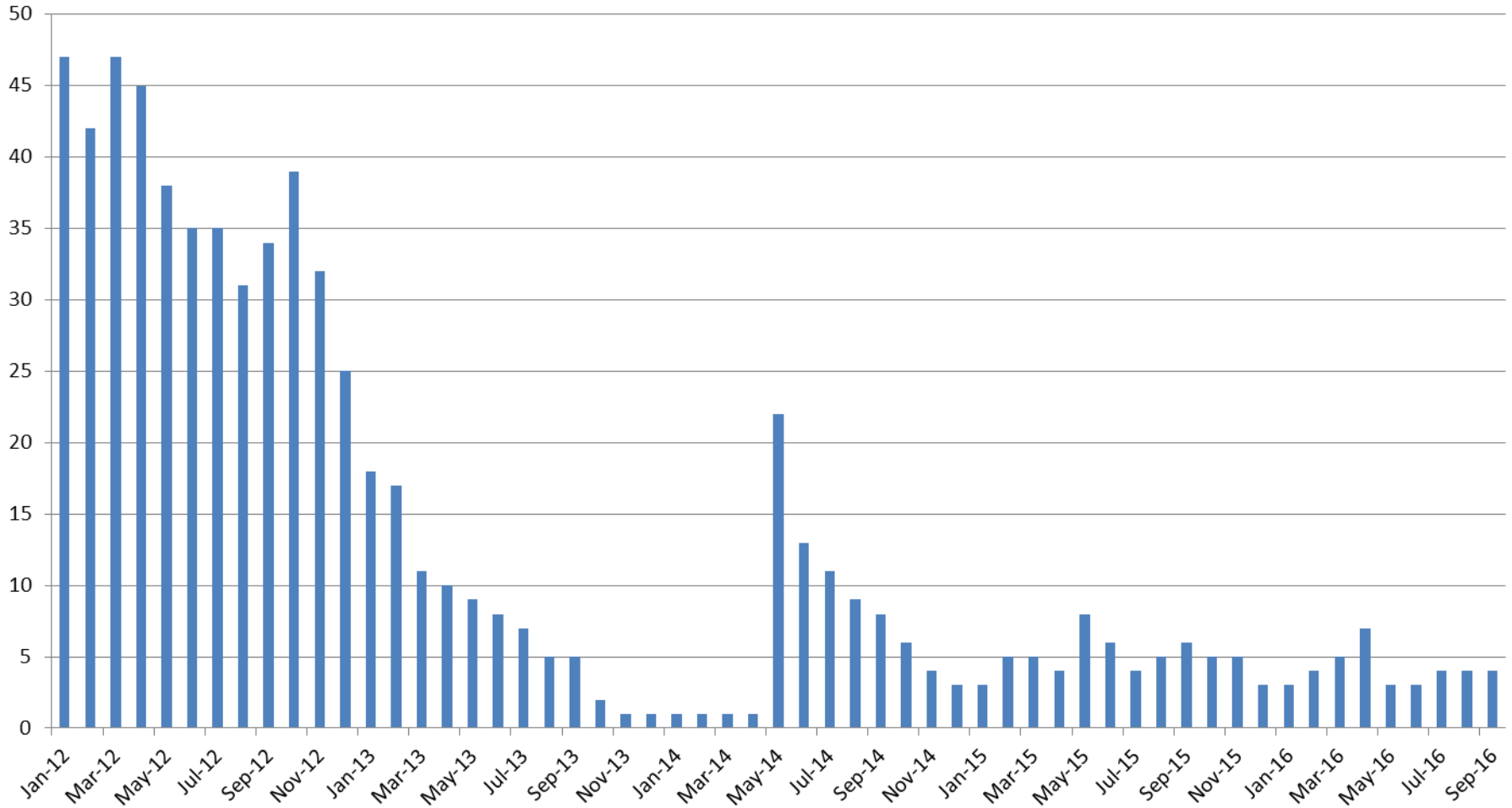
Juvenile Detention Services

September ADP	2013	2014	2015	2016
Juvenile Detention Facility	49	58	65	66
Juvenile Residential Facility	19	17	13	16
Home Based Supervision	22	29	25	28
Detention Advocacy Case Management Services	36	25	56	41
Weekend Alternative Detention Program (total)	14	24	19	12

September YTD AVERAGE	2013	2014	2015	2016
Juvenile Detention Facility	53	60	64	60
Juvenile Residential Facility	19	18	16	16
Home Based Supervision	27	26	22	27
Detention Advocacy Case Management Services	33	21	48	33
Weekend Alternative Detention Program	14	19	18	15

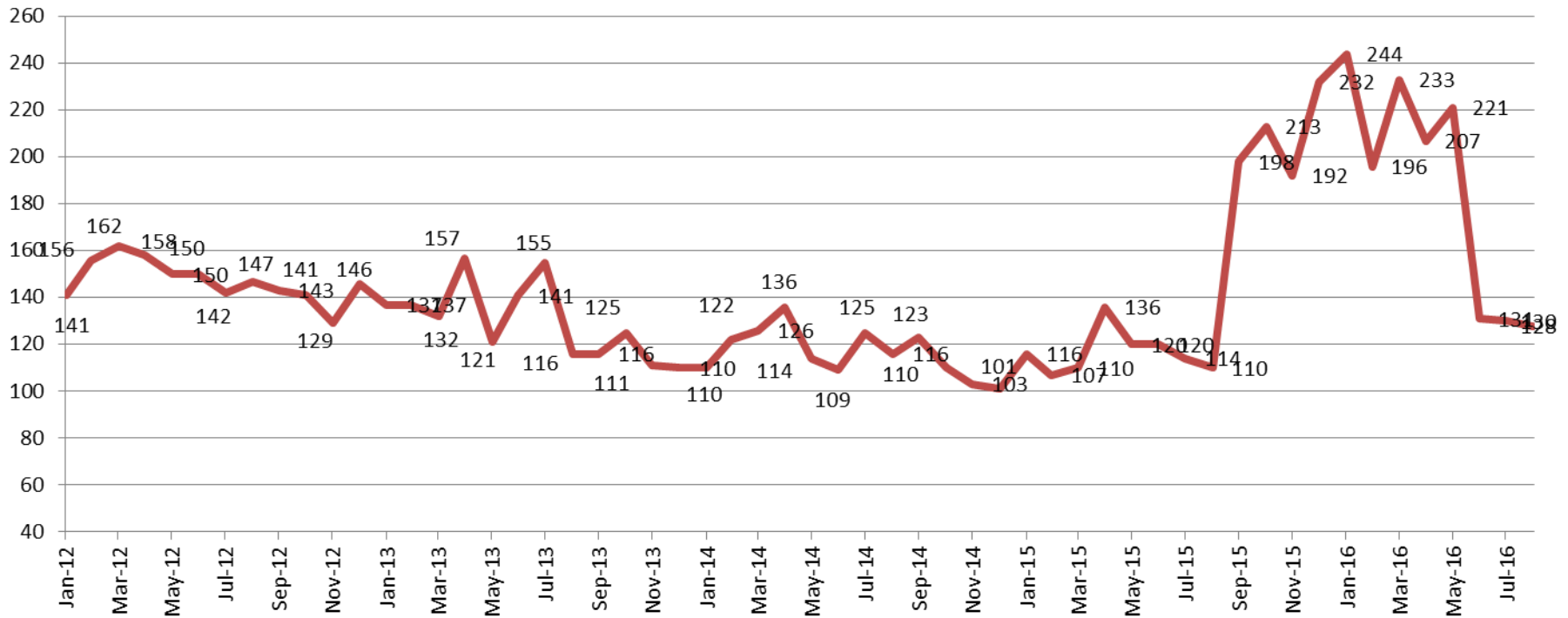
Monthly Jail Snapshot: September 30, 2016

BICE Holds 2012-Present



Monthly Jail Snapshot: September 30, 2016

Felony Commitments: February 2012 - present



September:

2012 = 147

2013 = 116

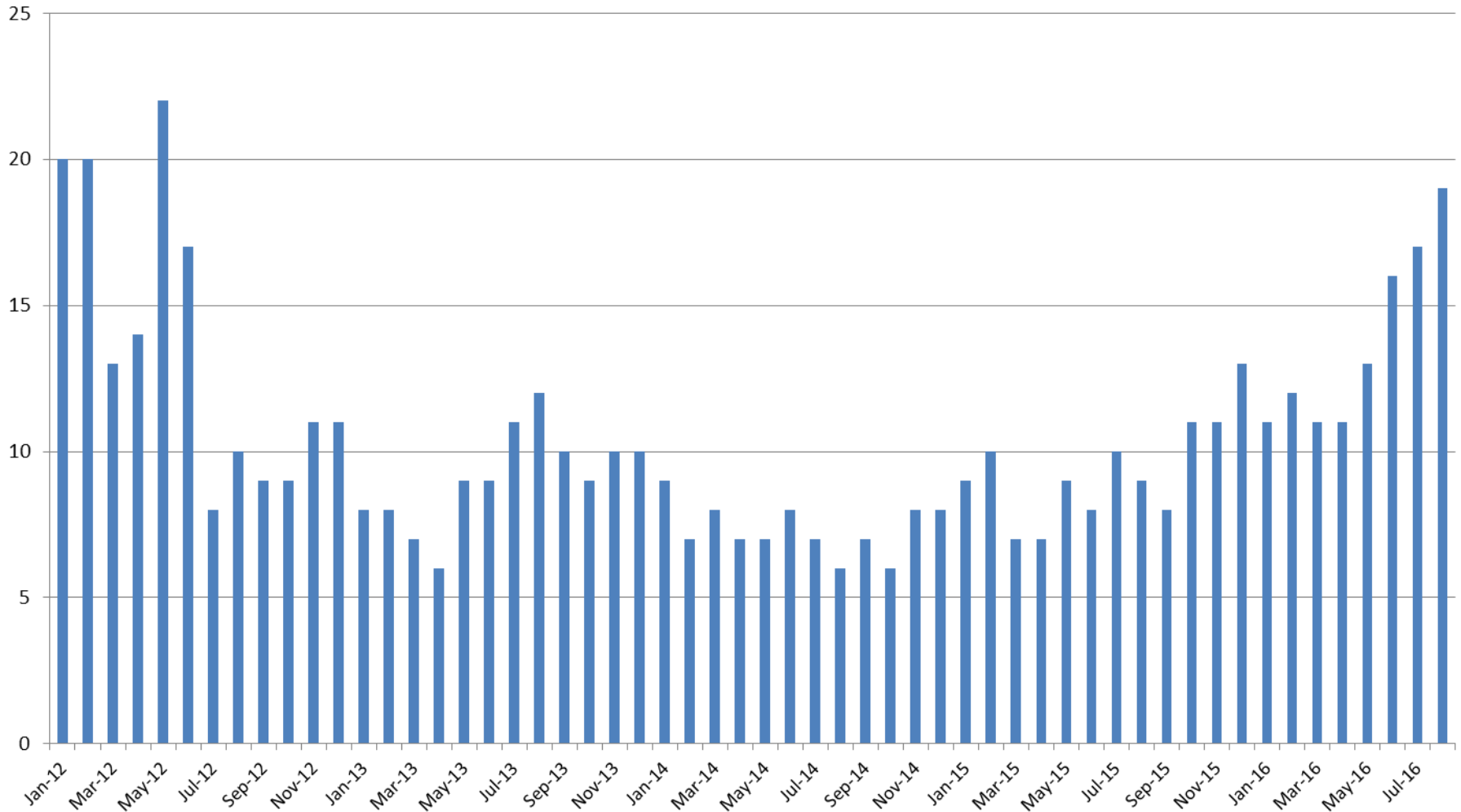
2014 = 116

2015 = 110

2016 = 128



Journal Entry Completion (Average Days) January 2013-Present



This data is always reported a month behind

