

Criminal Justice Coordinating Council

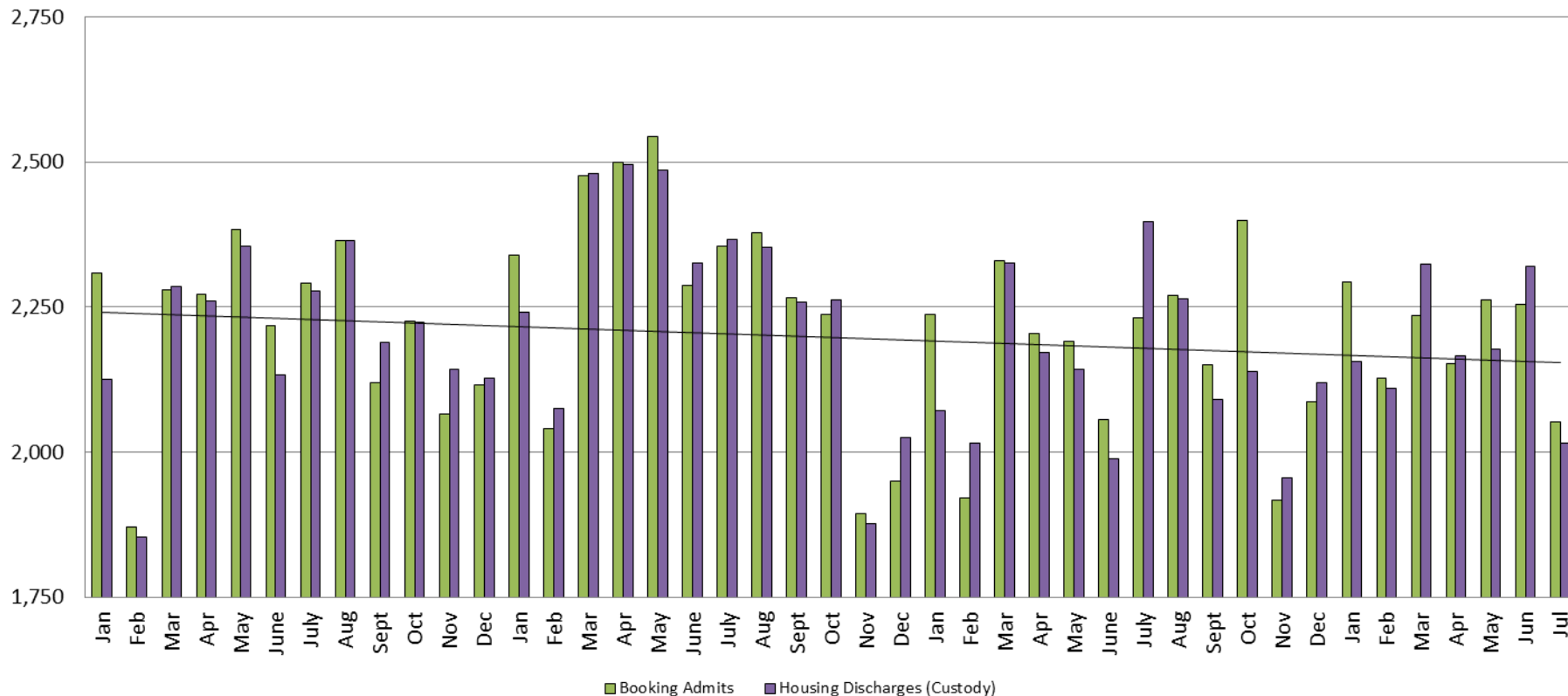
Population Report & Program Trends

August 2016



Detention Facility

Booking Admits & Housing Discharges from Custody January 2013 - Present



Housing Discharges for July

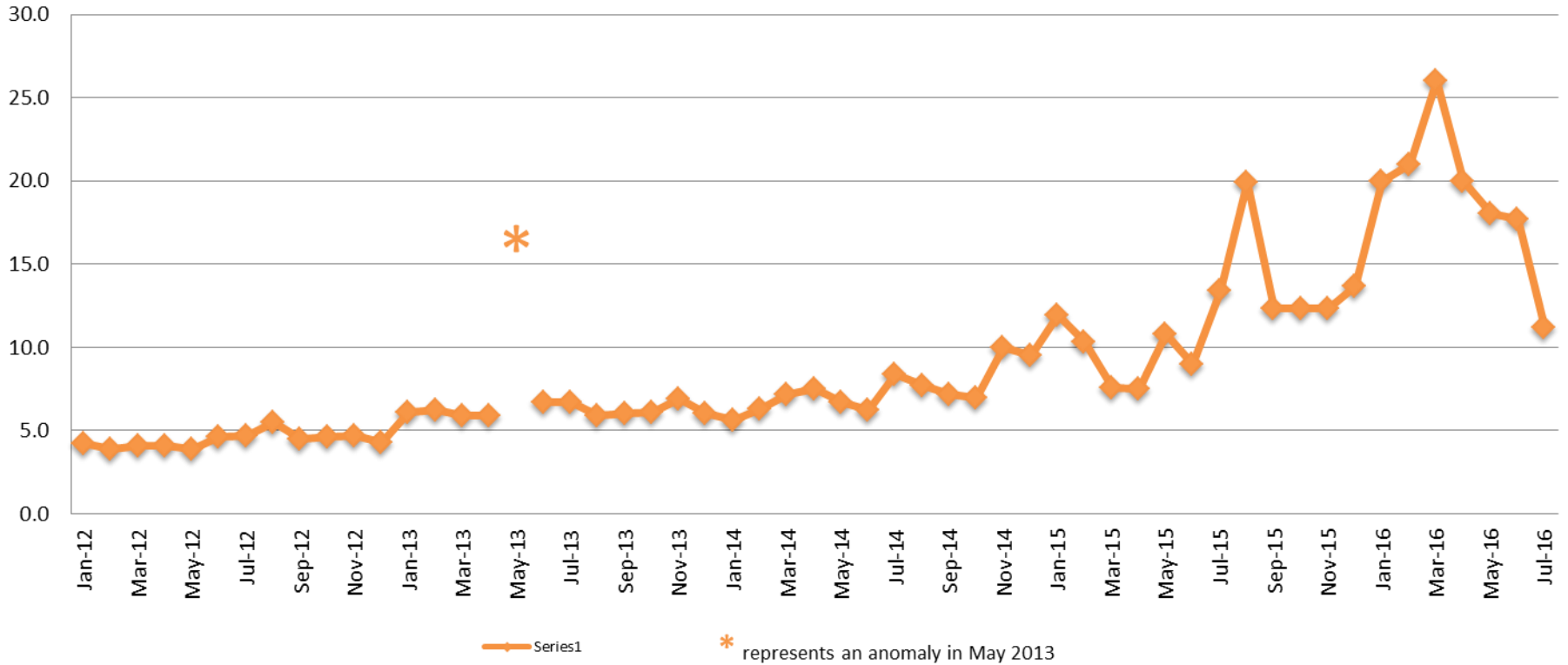
2014 = 2,366
 2015 = 2,398
 2016 = 2,015

Bookings for July

2014 = 2,355
 2015 = 2,231
 2016 = 2,053



Average Length of Stay: Booking (Hours) January 2012 - Present



July

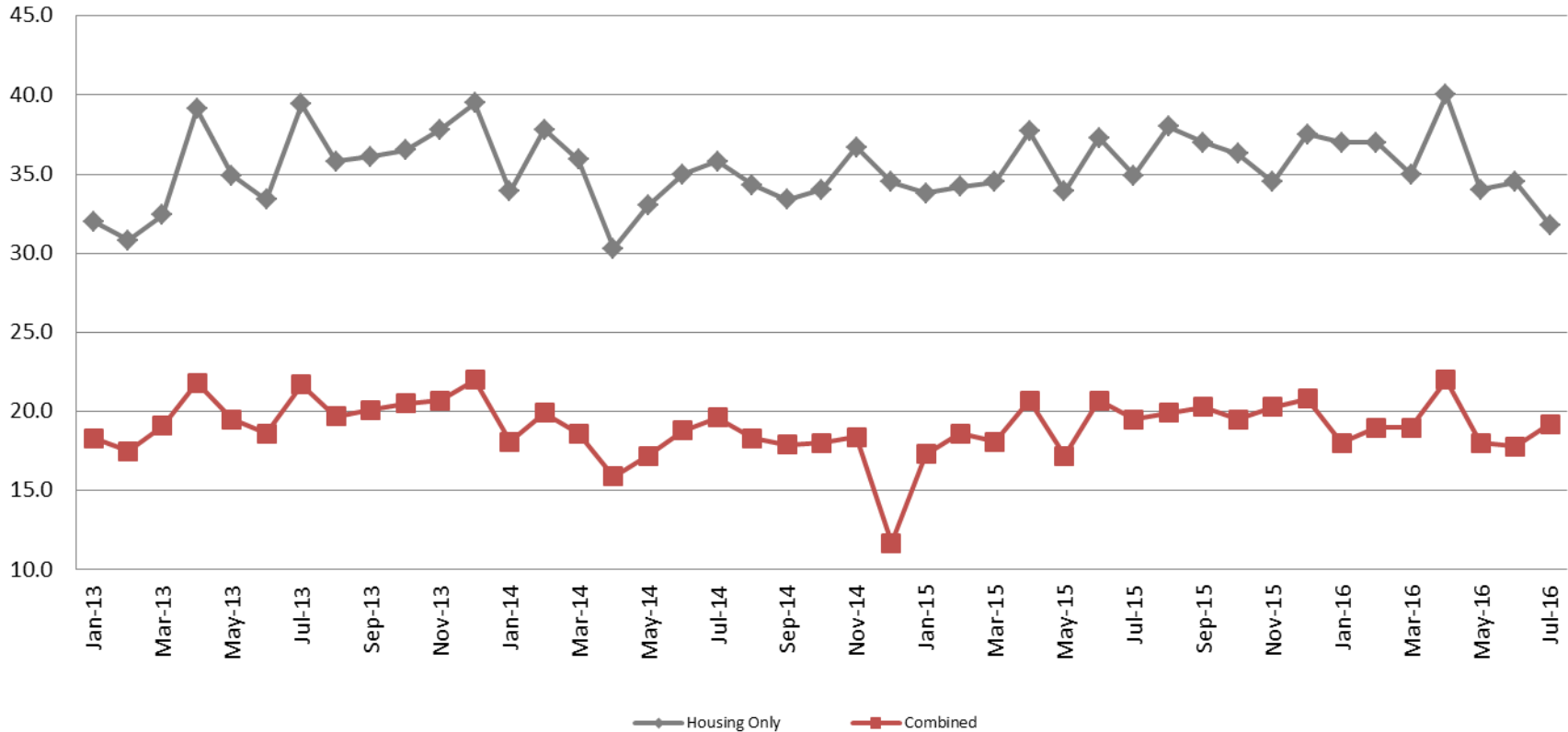
2012 = 4.7
 2013 = 6.7
 2014 = 8.4
 2015 = 13.4
 2016 = 11.7

July YTD Avg.

2012 = 4.2
 2013 = 7.7
 2014 = 6.8
 2015 = 10.1
 2016 = 19.1

Average Length of Stay: Housing & Combined (Days)

January 2013 - Present



July Housing

2013 = 39.4
 2014 = 35.8
 2015 = 34.9
 2016 = 31.8

July Housing YTD Avg.

2013 = 34.6
 2014 = 34.5
 2015 = 35.2
 2016 = 35.6

July Combined

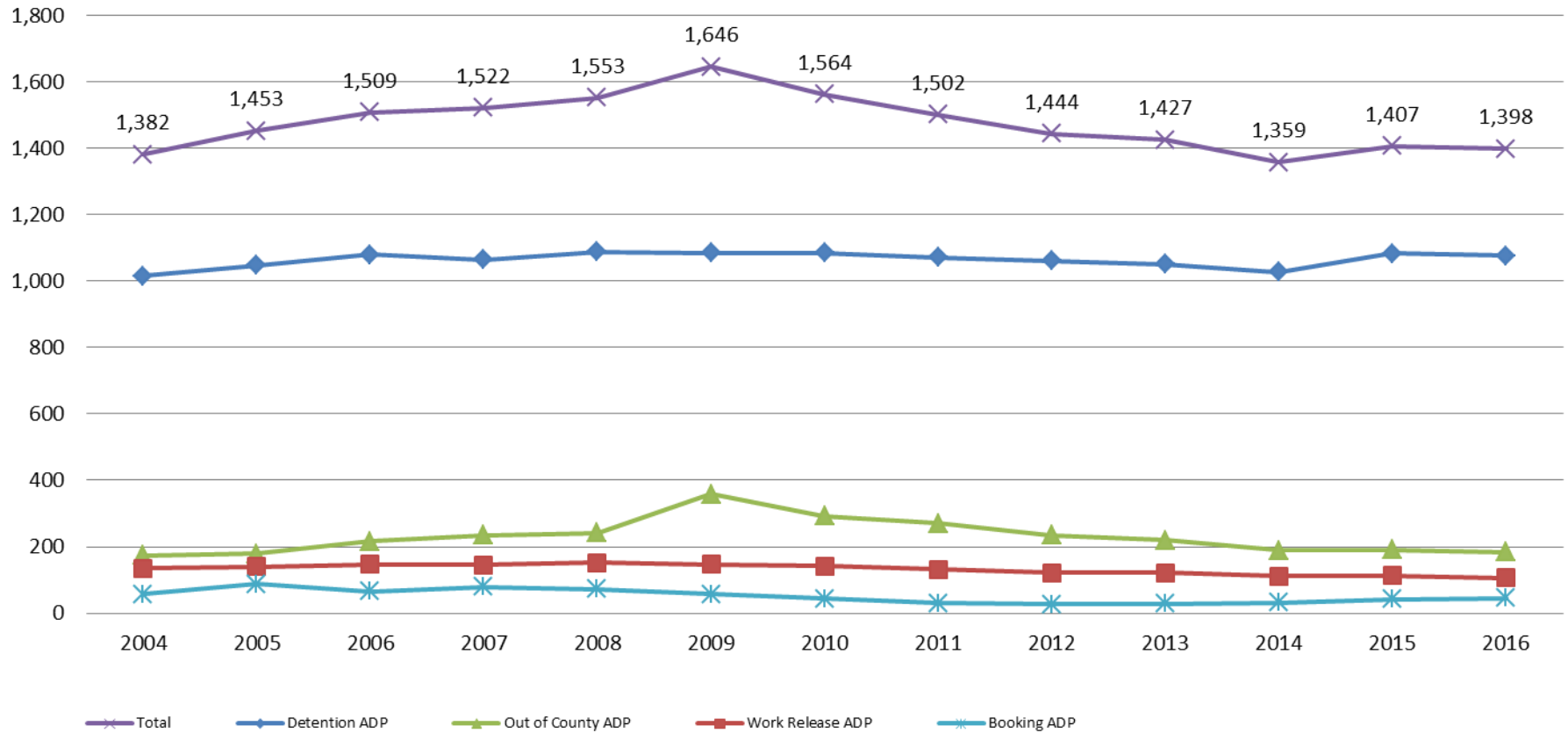
2013 = 21.7
 2014 = 19.6
 2015 = 19.5
 2016 = 19.2

July Combined YTD Avg.

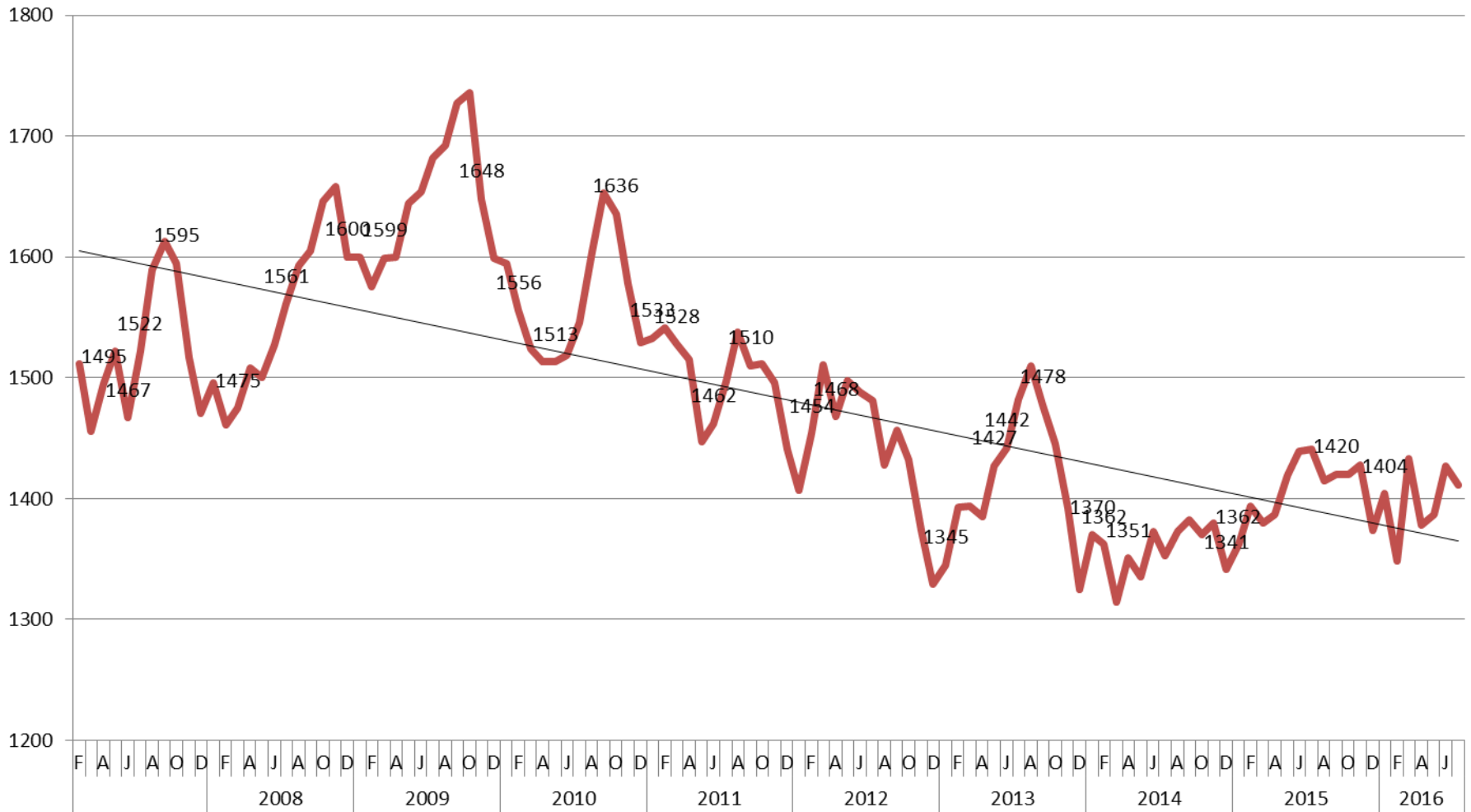
2013 = 19.5
 2014 = 18.3
 2015 = 18.9
 2016 = 19.0

Jail: Annual Average Daily Population (ADP)

TRENDS: Booking, Detention, Work Release, & Out of County Annual ADP: 2004 - present



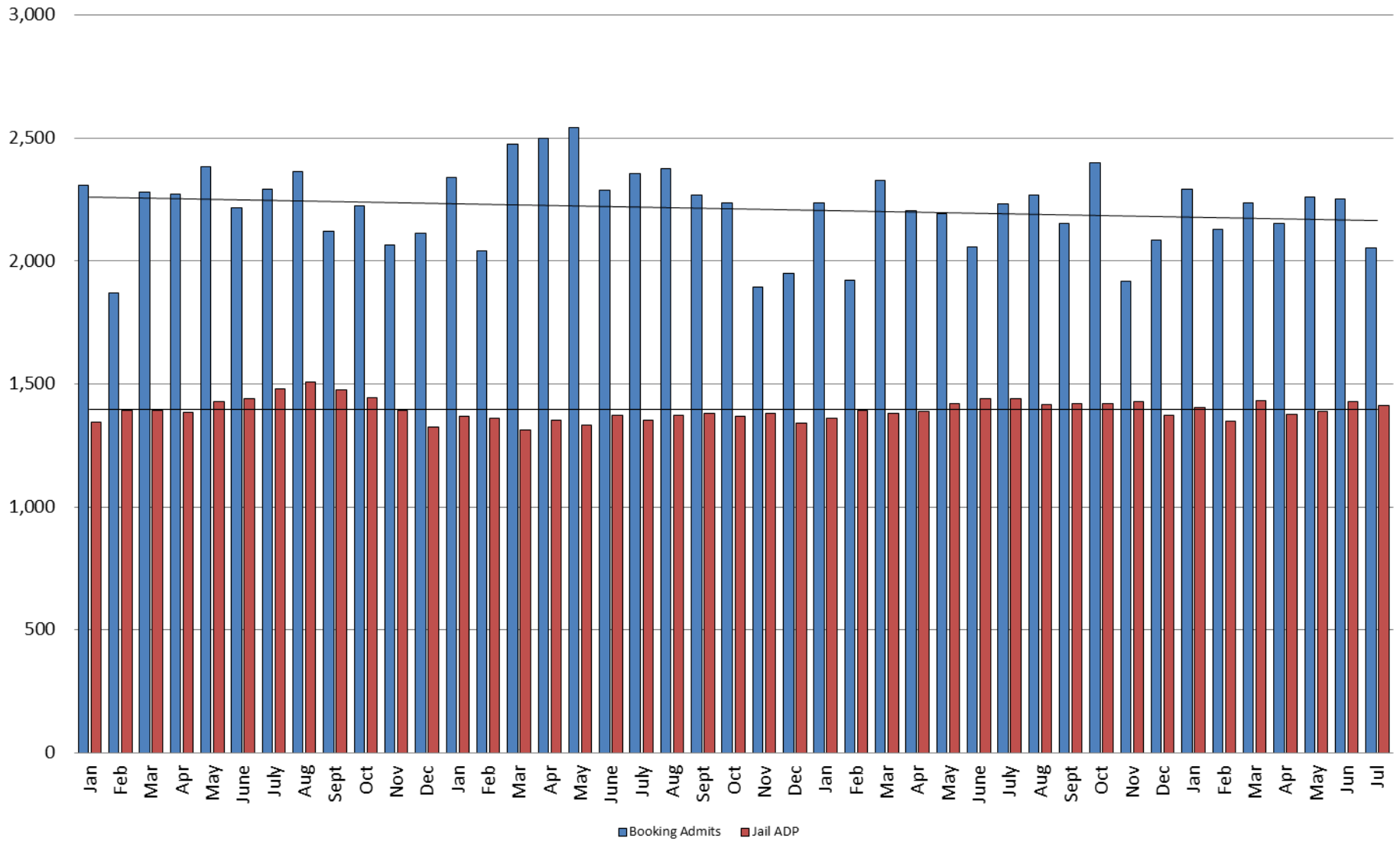
TOTAL MONTHLY ADP: JAIL (Booking, Detention Facility, Work Release, & Out of County) 2007 - present



This slide shows total monthly ADP for individuals in booking, detention, work release and out-of county (combined)



Booking Admits & Total Monthly ADP (Jail): 2013 - present



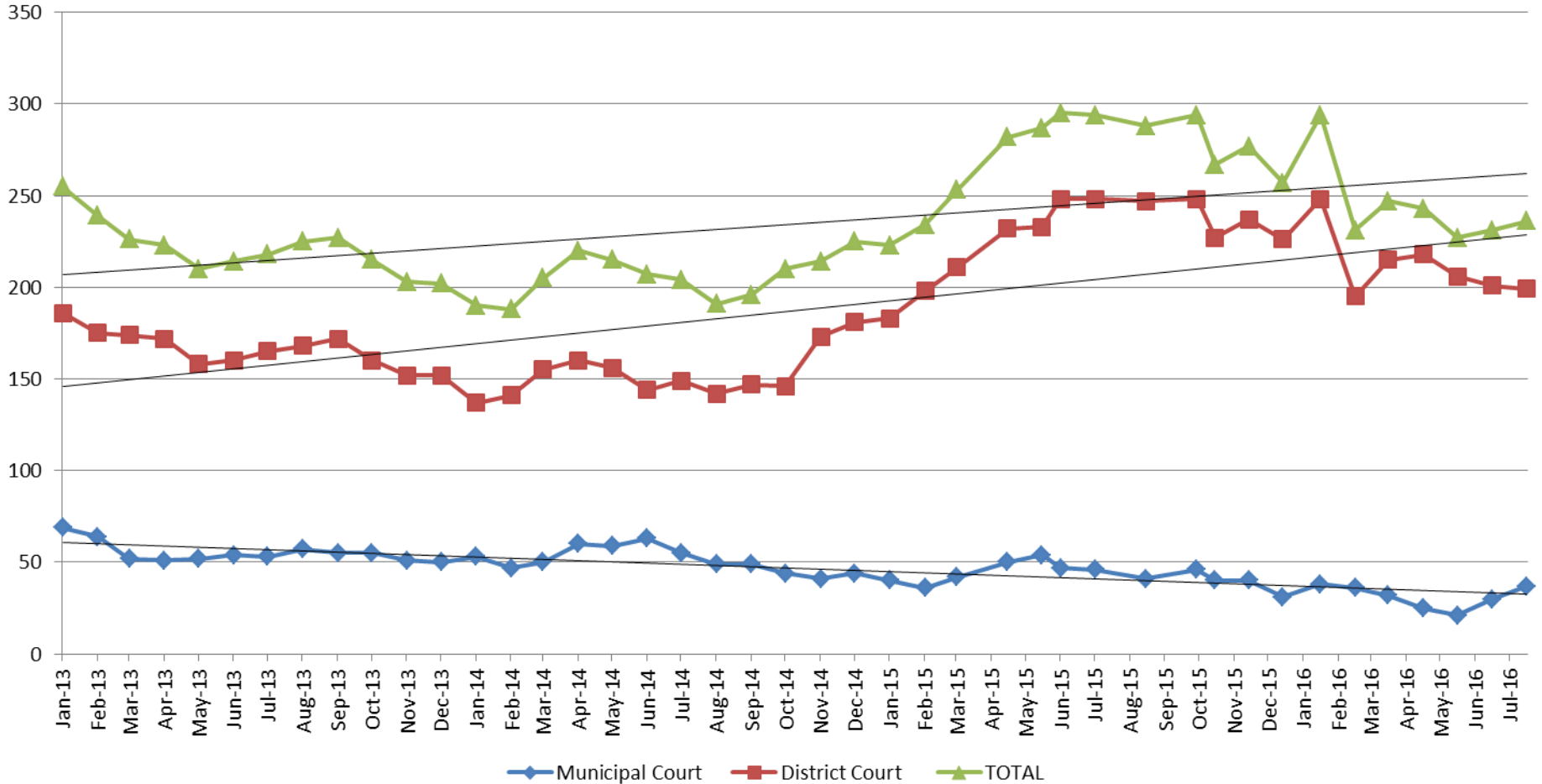
Jail includes individuals in booking, detention, work release and out-of county (combined)

(data obtained from detention facility)



Sedgwick County...
working for you

Pretrial Services Program (PSP) Monthly ADP: January 2013 - Present



July	2013	2014	2015	2016
Municipal Court	53	55	46	37
District Court	165	149	248	199
TOTAL	218	204	294	236

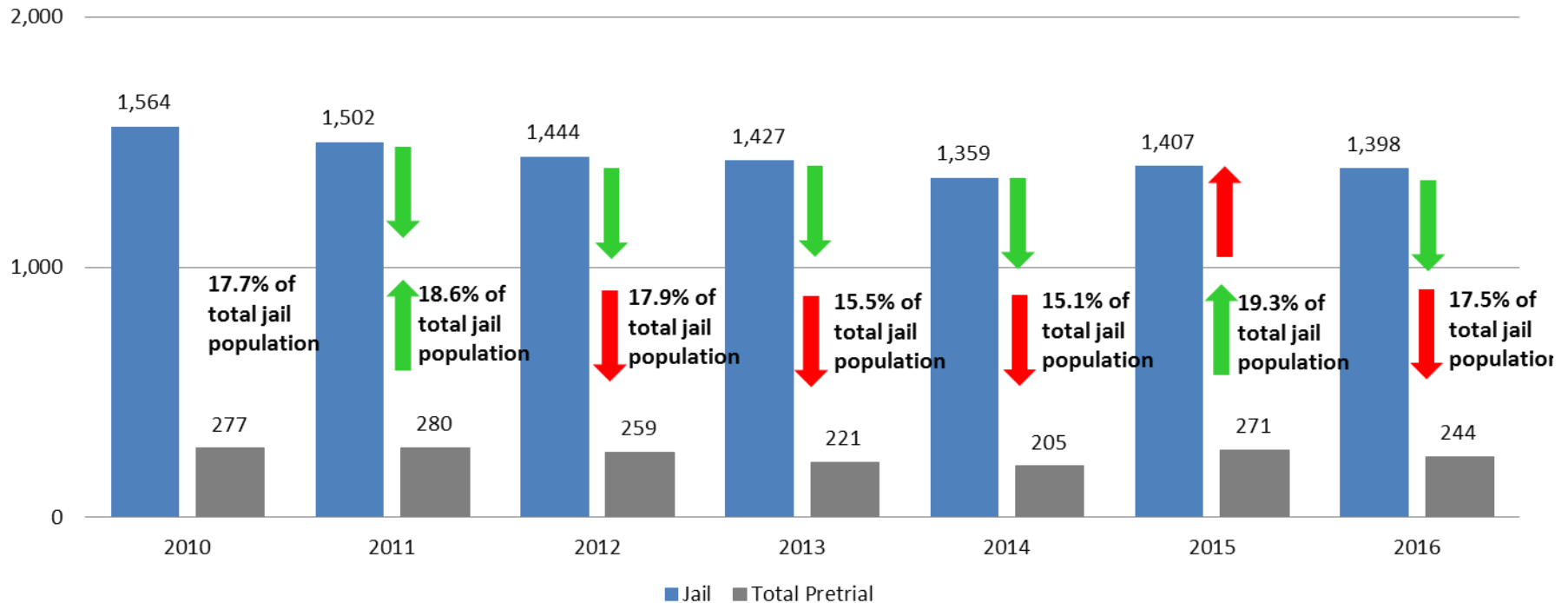
July YTD Avg.	2013	2014	2015	2016
Municipal Court	56	55	45	31
District Court	170	149	222	212
TOTAL	226	204	267	244



(data obtained from Pretrial Services)

Correlation: Total & PSP

Total Annual ADP: 2010 - Present



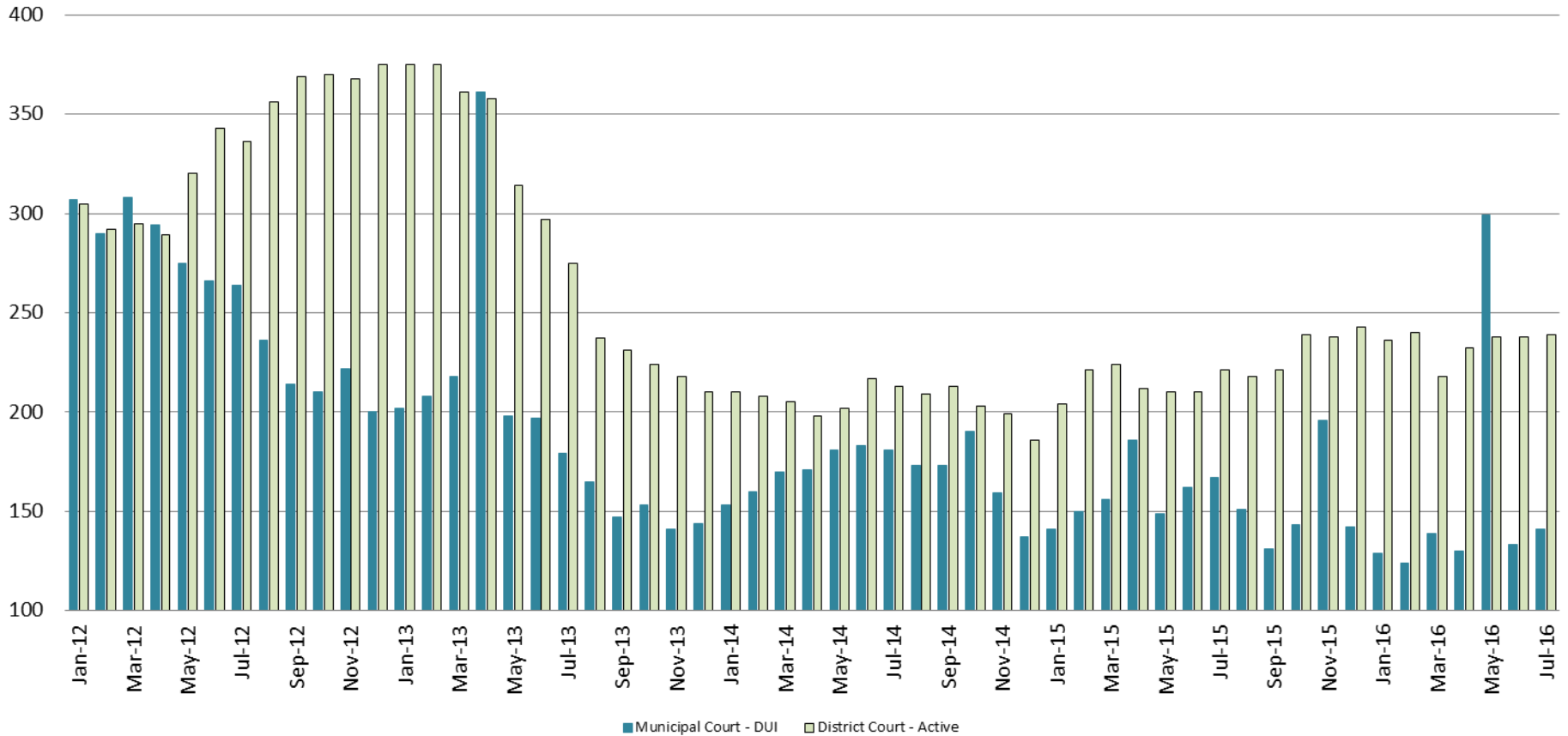
Arrows represent the overall increase/decrease of the population from year to year

Jail includes individuals in booking, detention, work release and out-of county (combined)



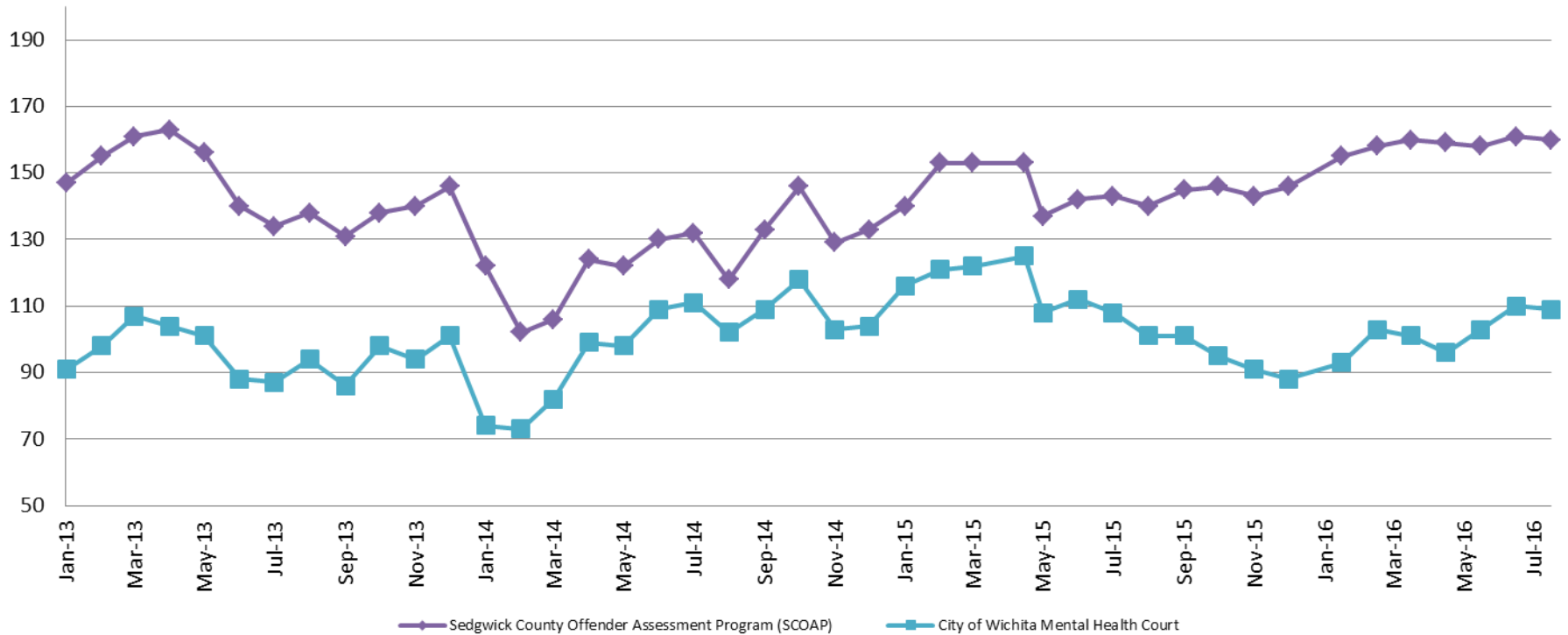
Diversion - Active Caseload

January 2012 - Present



<u>July</u>	<u>2013</u>	<u>2014</u>	<u>2015</u>	<u>2016</u>	<u>July YTD Avg.</u>	<u>2013</u>	<u>2014</u>	<u>2015</u>	<u>2016</u>
Municipal Court- DUI	179	181	167	141	Municipal Court	223	171	159	156
District Court- Active	275	213	221	239	District Court	336	208	215	234

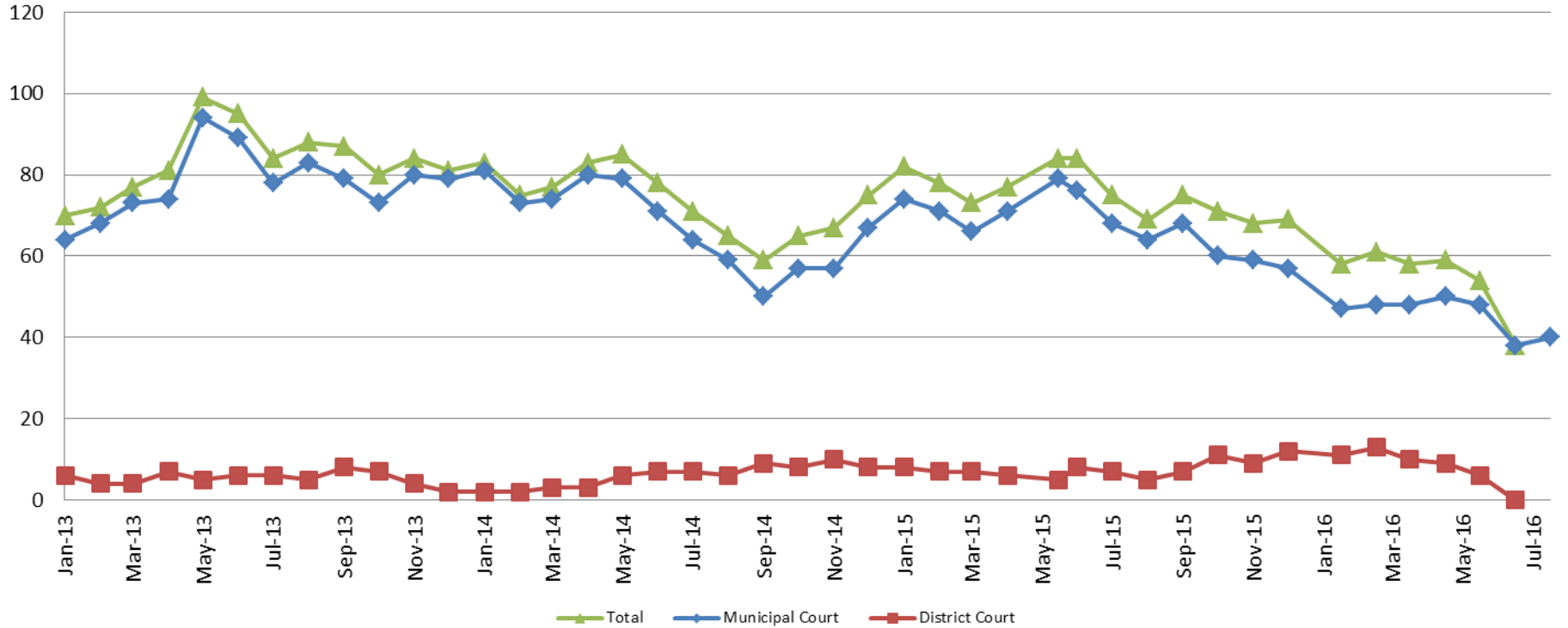
Mental Health - ADP 2013 - present



July:	2013	2014	2015	2016
SCOAP	134	132	143	160
CoW – MH Court	87	111	108	109
July YTD Avg.	2013	2014	2015	2016
SCOAP	151	120	146	159
CoW – MH Court	97	92	116	102

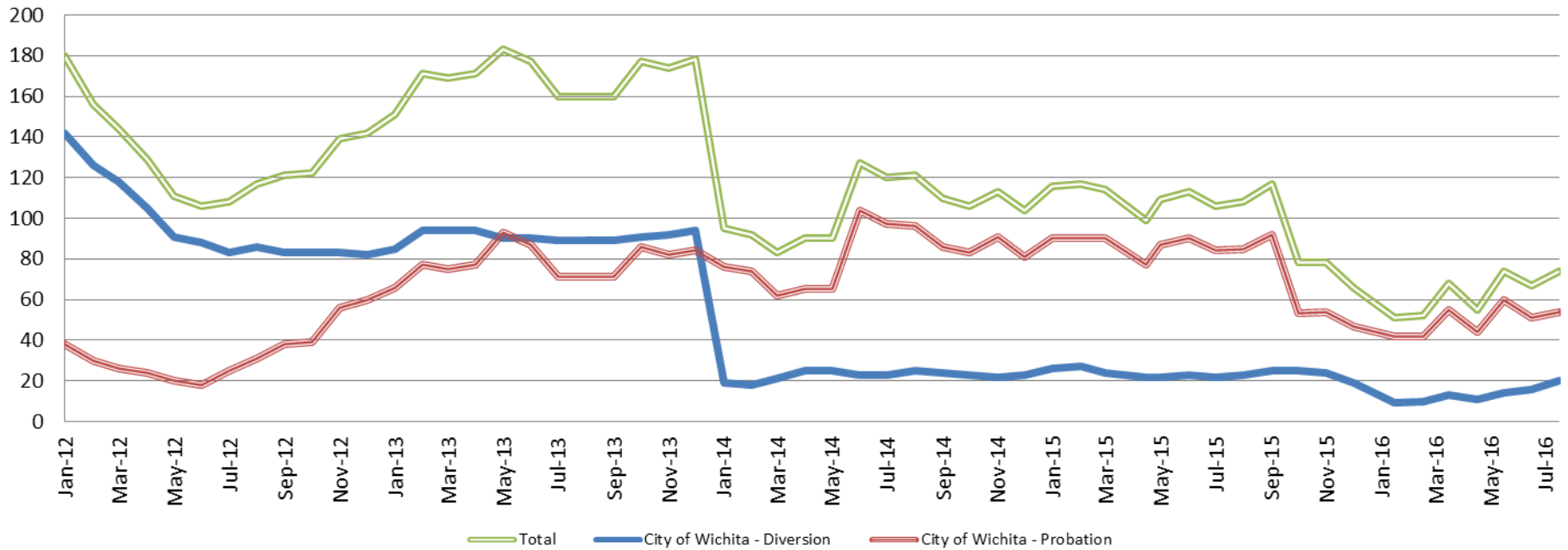
(data obtained from COMCARE)

Day Reporting - Active Caseload 2013-present



July	2013	2014	2015	2016
Municipal Court	78	64	68	40
District Court	6	7	7	0*
TOTAL	84	71	75	40
July YTD Avg.	2013	2014	2015	2016
Municipal Court	77	75	72	46
District Court	5	4	7	10
TOTAL	83	79	79	55

Drug Court - City of Wichita ADP: 2012 - present



July - CoW Diversion

2013 = 89
2014 = 23
2015 = 22
2016 = 20

July YTD Avg.

2013 = 91
2014 = 22
2015 = 24
2016 = 13

July - CoW Probation

2013 = 71
2014 = 97
2015 = 84
2016 = 54

July YTD Avg.

2013 = 78
2014 = 78
2015 = 87
2016 = 50

July - CoW Total

2013 = 160
2014 = 120
2015 = 106
2016 = 74

July YTD Avg.

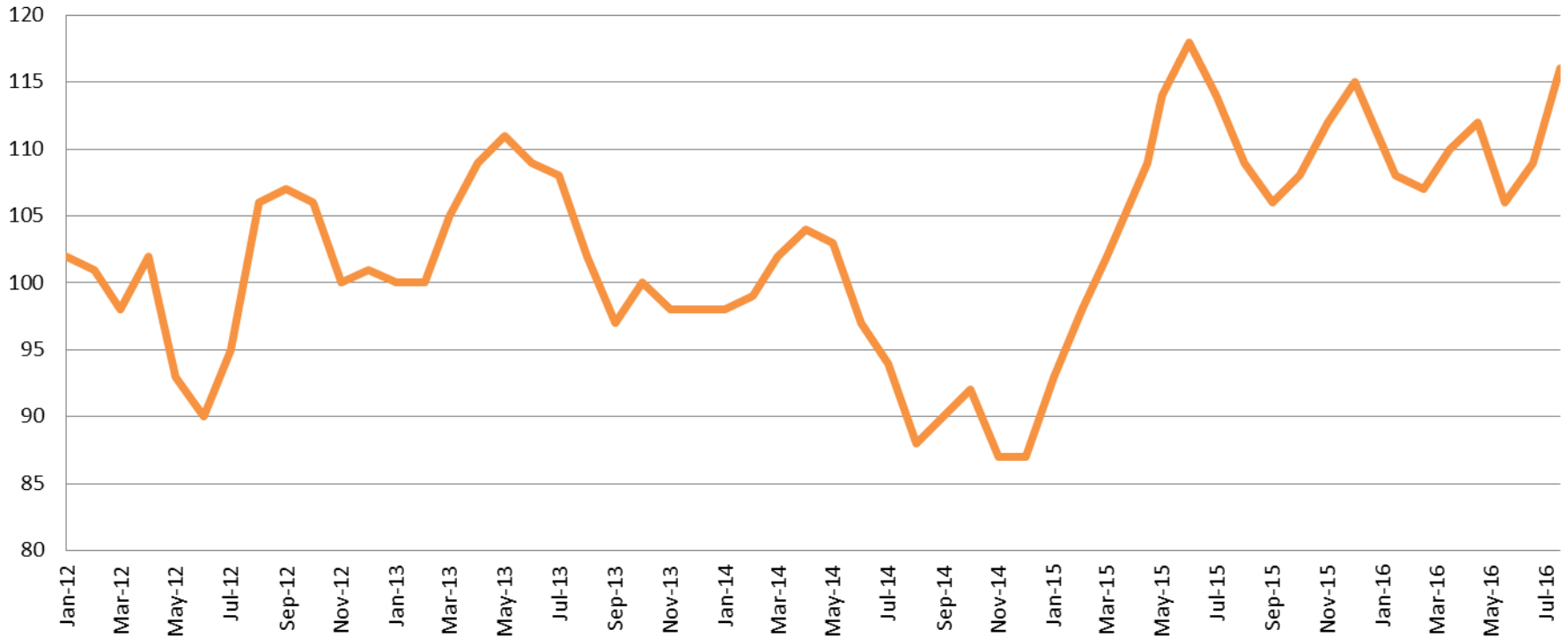
2013 = 169
2014 = 100
2015 = 111
2016 = 63

(data obtained from CoW)



Sedgwick County...
working for you

Drug Court - Sedgwick County ADP: 2012 - present



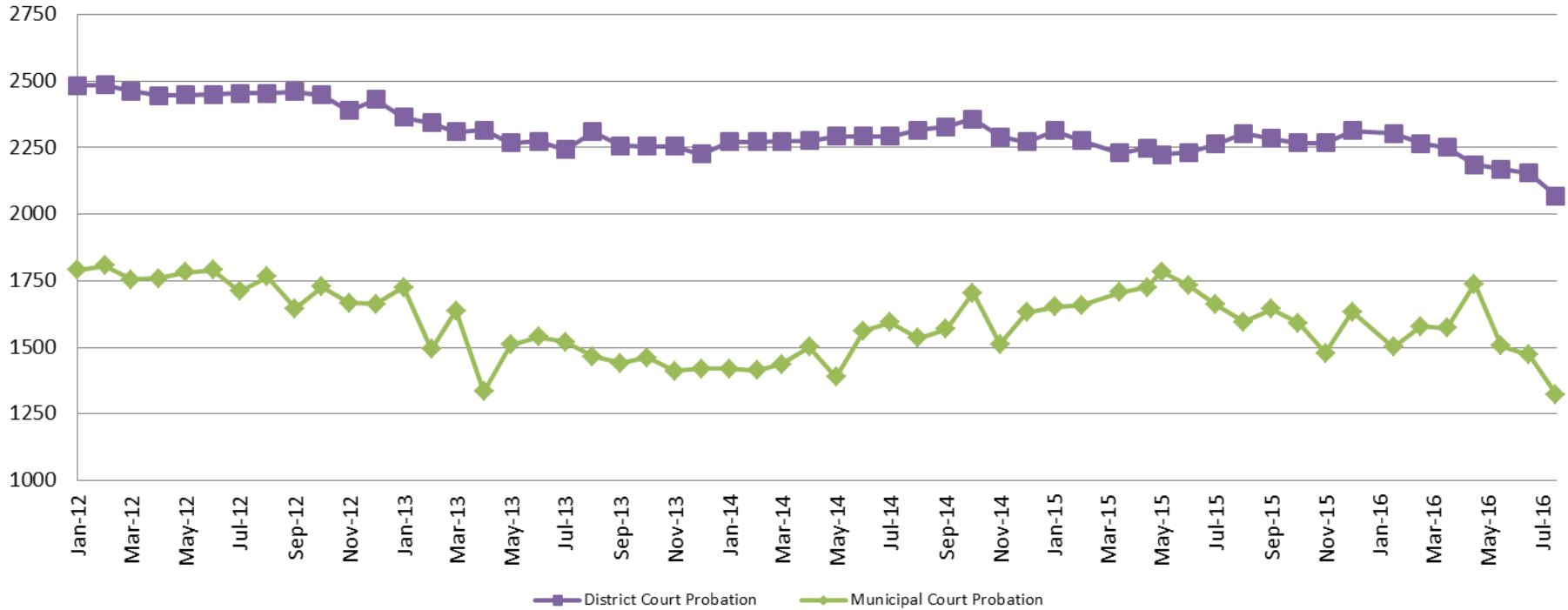
July - SG CO

2013 = 108
2014 = 94
2015 = 114
2016 = 116

July YTD Avg.

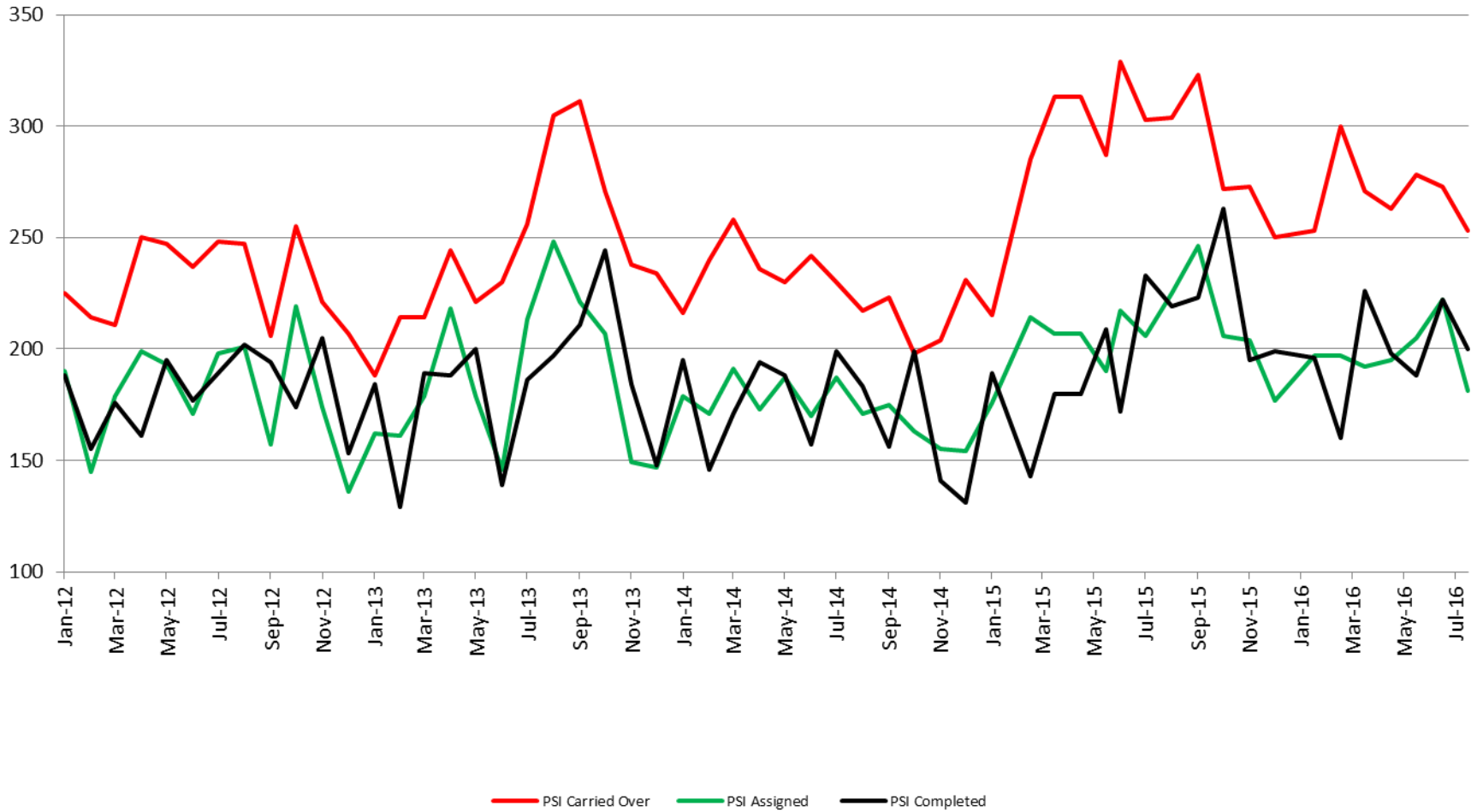
2013 = 106
2014 = 100
2015 = 107
2016 = 110

Probation - Active Caseloads 2012 - present



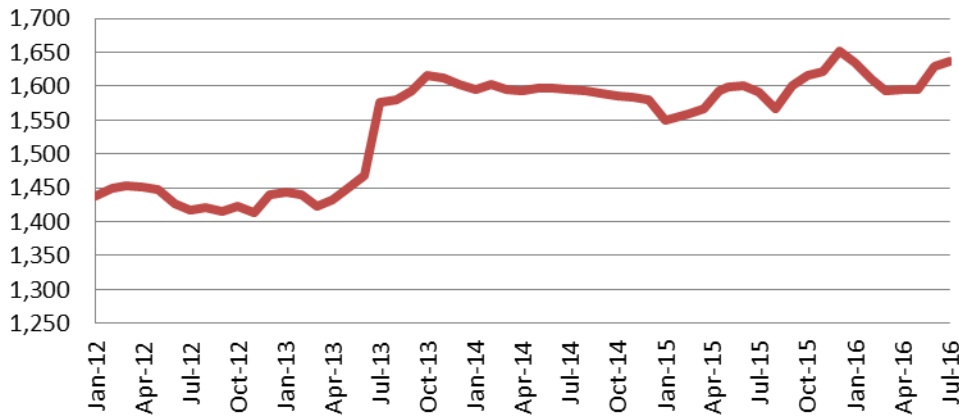
<u>July</u>	<u>2013</u>	<u>2014</u>	<u>2015</u>	<u>2016</u>
District Court	2,242	2,293	2,263	2,068
Municipal Court	1,520	1,594	1,661	1,323
<u>July YTD Avg.</u>	<u>2013</u>	<u>2014</u>	<u>2015</u>	<u>2016</u>
District Court	2,302	2,282	2,255	2,200
Municipal Court	1,537	1,474	1,703	1,527

District Court Probation: Pre-Sentence Investigation 2012 - present



Community Corrections

**Adult Intensive Supervision Probation (AISP) ADP
2012 - present**



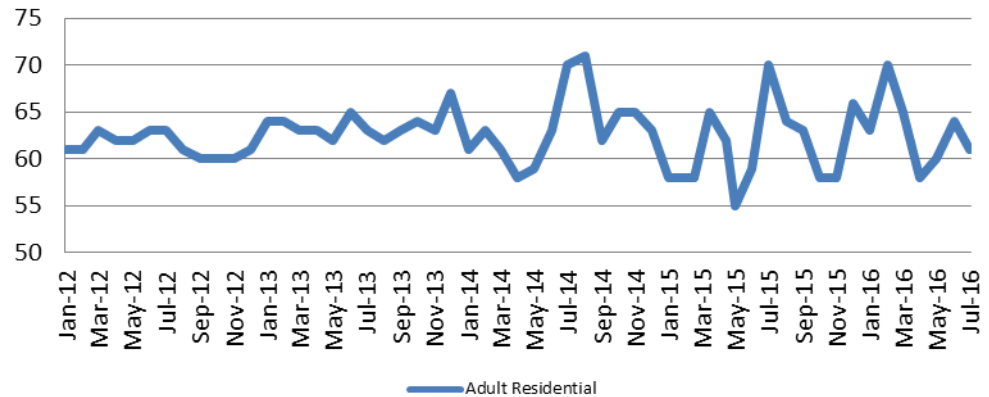
<u>July</u>	<u>July YTD Avg.</u>
2013 = 1,577	2013 = 1,462
2014 = 1,595	2014 = 1,597
2015 = 1,591	2015 = 1,580
2016 = 1,637	2016 = 1,613

(data obtained from SG CO Dept. of Corrections)

*KDOC changed population count to include drug court, residential and AISP beginning July 2013.

**Adult Residential: ADP
2012 - present**

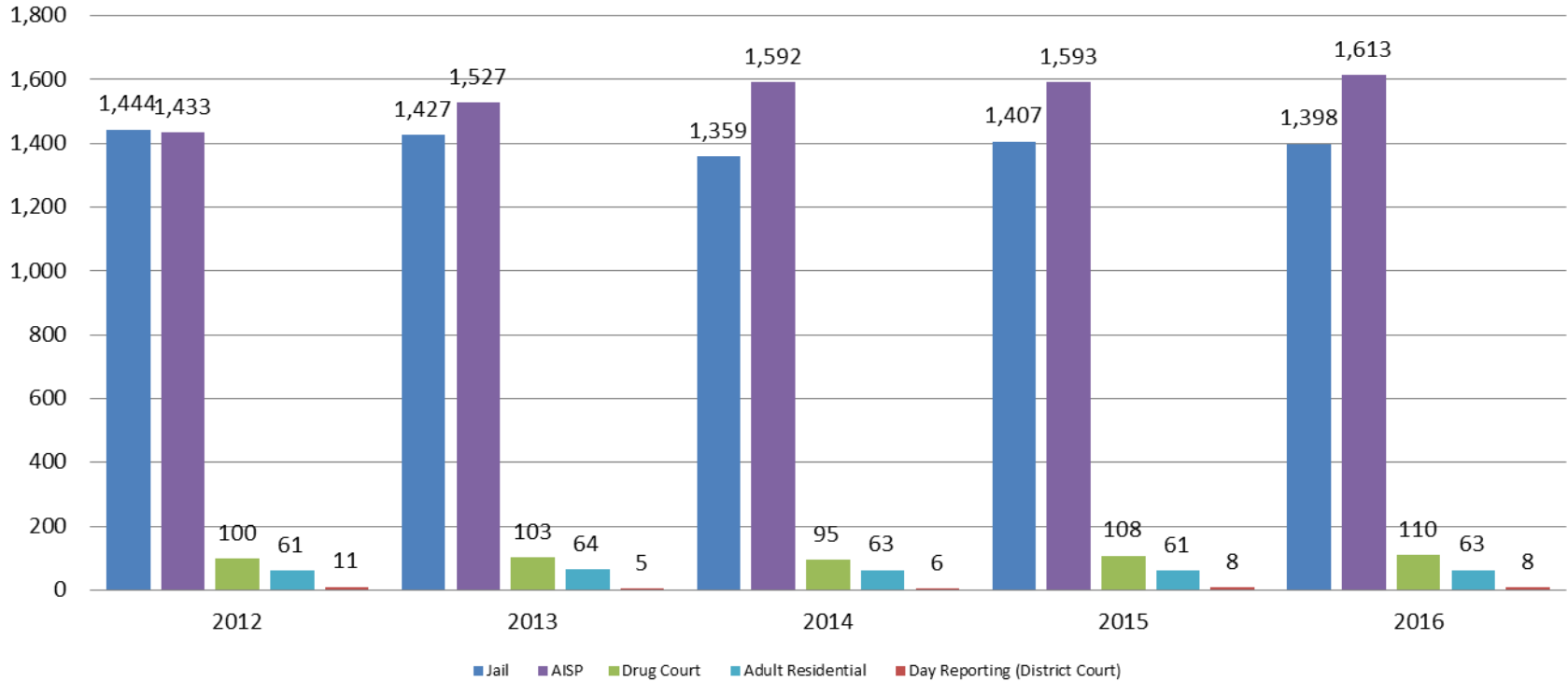
<u>July</u>	<u>July YTD Avg.</u>
2013 = 63	2013 = 63
2014 = 70	2014 = 62
2015 = 70	2015 = 61
2016 = 61	2016 = 63



(data obtained from SG CO Dept. of Corrections)

Correlation: Total & Sedgwick County Programs (Adult)

Total Annual ADP: 2012 - Present



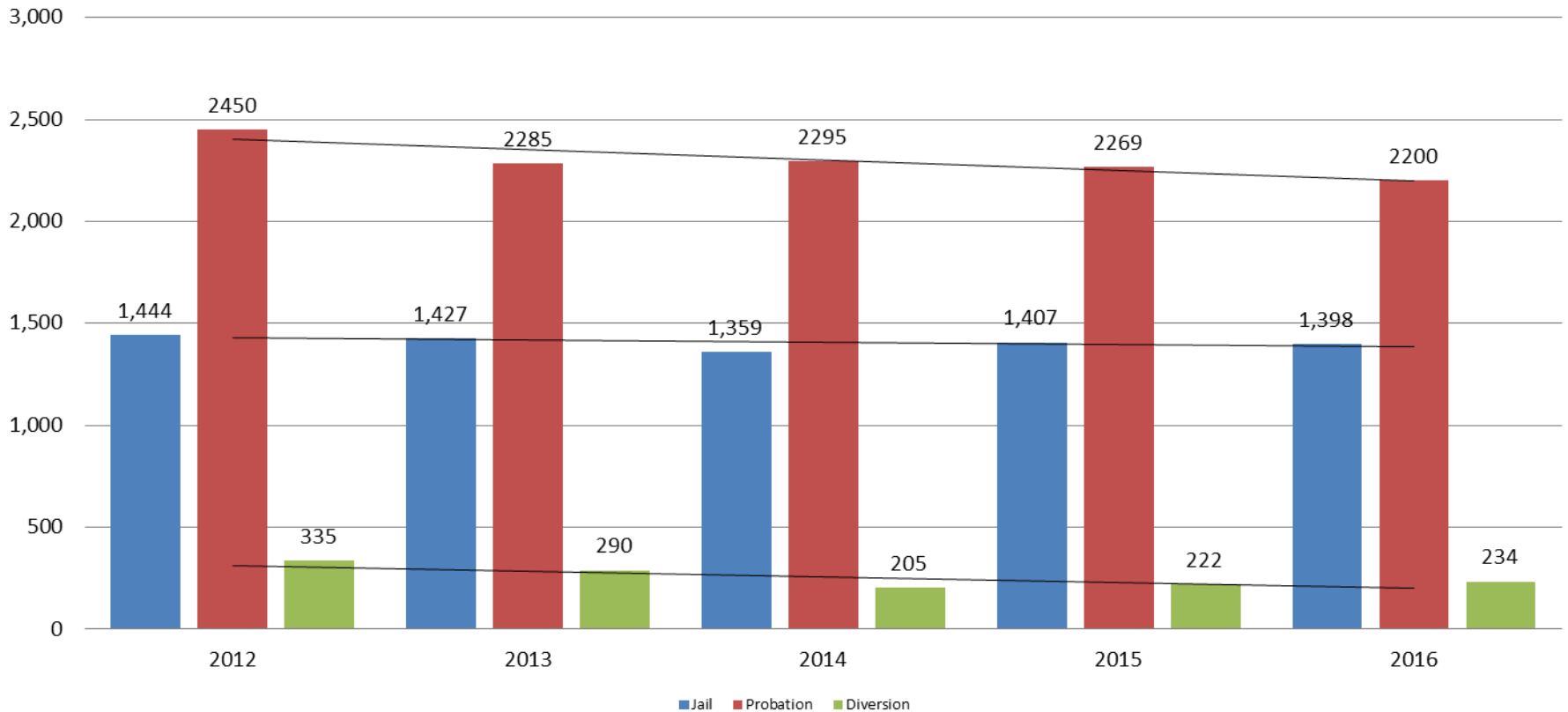
Jail includes individuals in booking, detention, work release and out-of county (combined)

(data obtained from detention facility, SG Dept. of Corrections, Pretrial Services, & CoW)



Correlation: Total & District Court Programs

Total Annual ADP: 2012 - Present

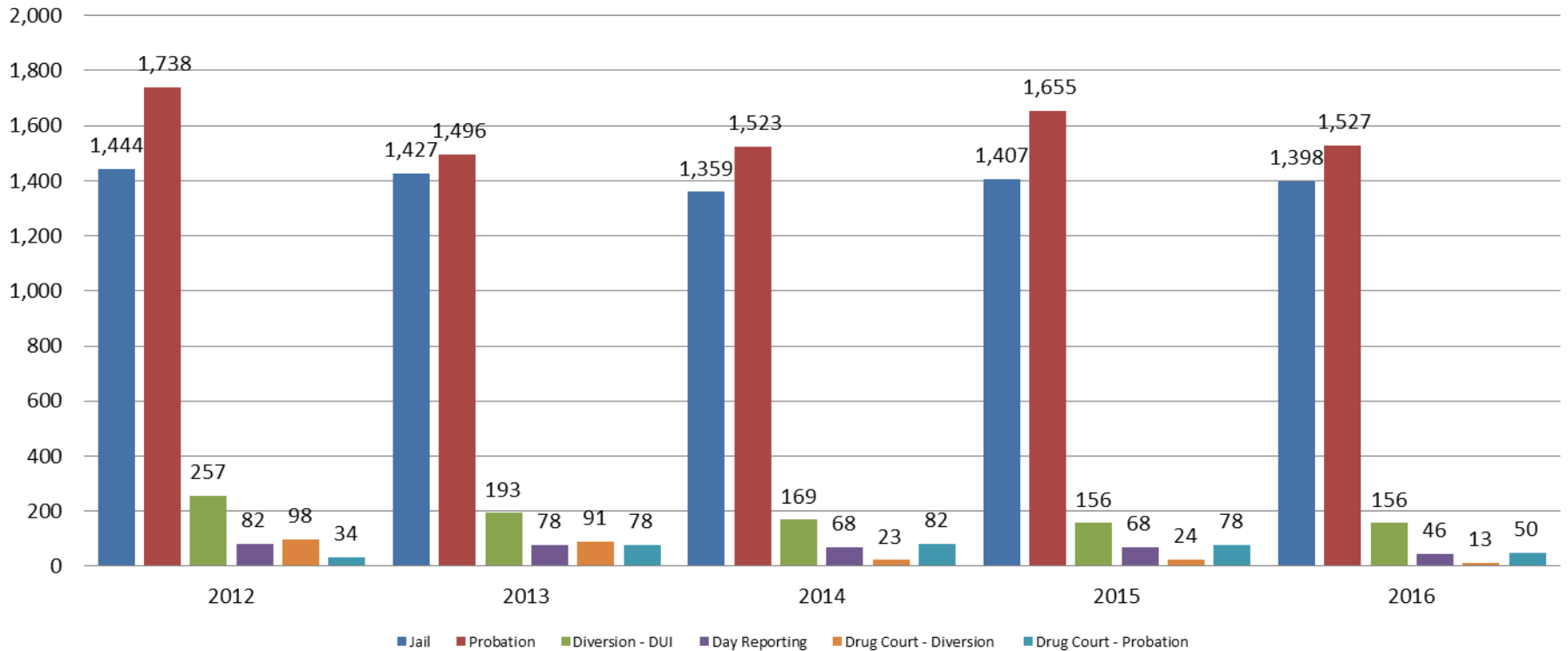


Jail includes individuals in booking, detention, work release and out-of county (combined)



Correlation: Total & City of Wichita / Municipal Court Programs

Total Annual ADP: 2012 - present

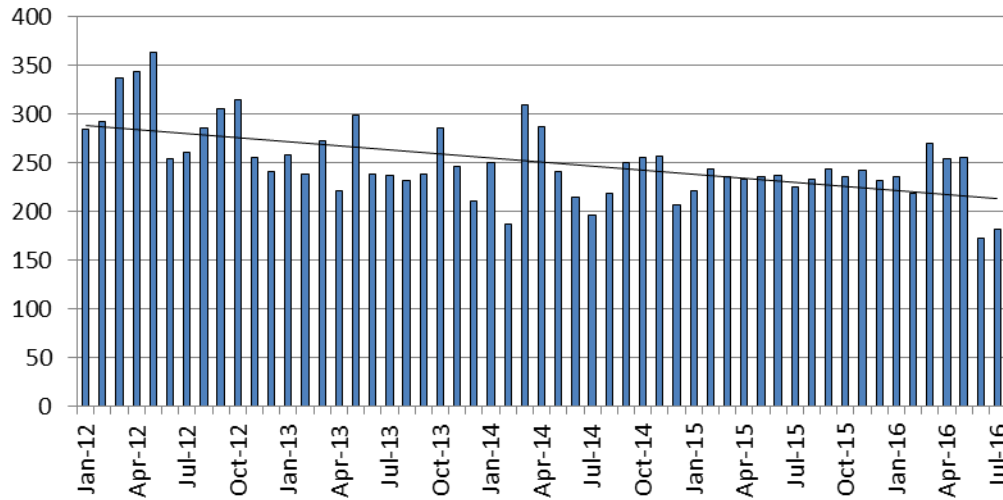


Jail includes individuals in booking, detention, work release and out-of county (combined)



Juvenile

JIAC Intakes: 2012 - present



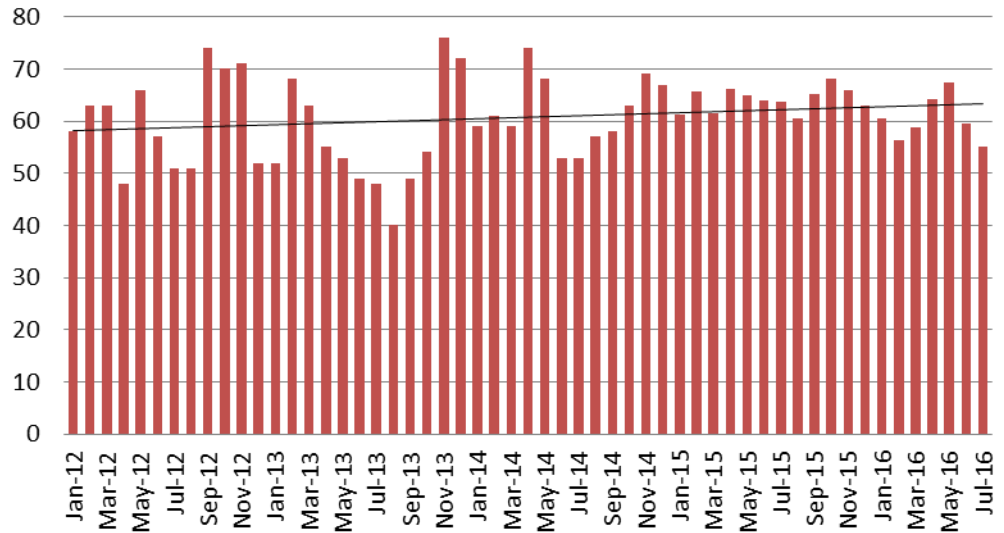
July	July YTD Average
2013 = 237	2013 = 252
2014 = 196	2014 = 241
2015 = 225	2015 = 233
2016 = 182	2016 = 227

(data obtained from SG CO Dept. of Corrections)

July	July YTD Avg.
2013 = 48	2013 = 55
2014 = 53	2014 = 61
2015 = 64	2015 = 64
2016 = 55	2016 = 60

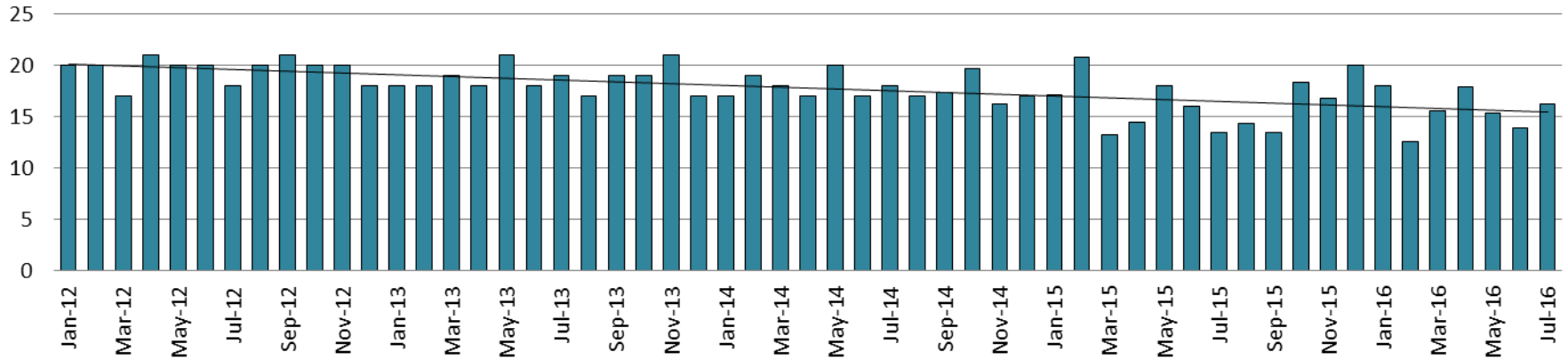
(data obtained from SG CO Dept. of Corrections)

JDF ADP: 2012 - present

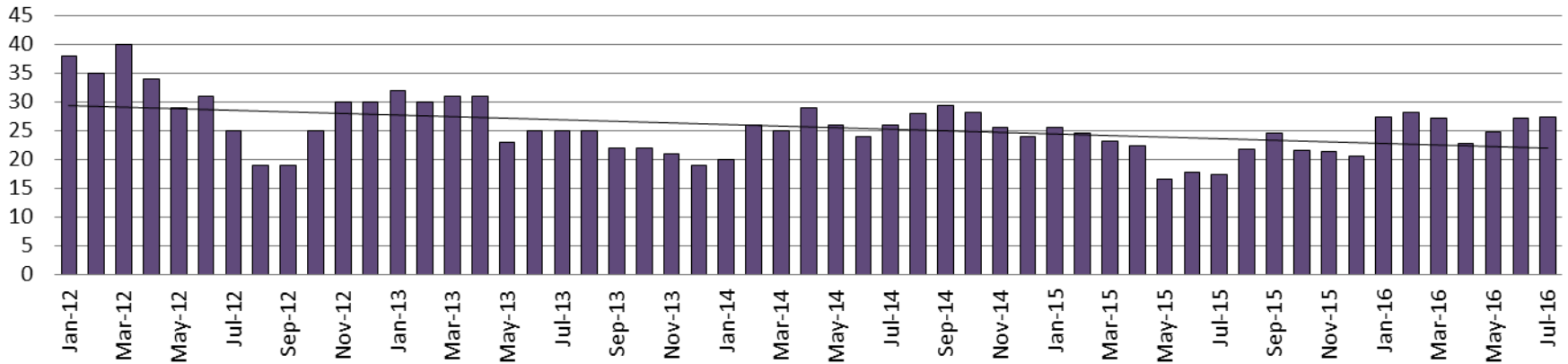


Juvenile Detention Alternatives

Juvenile Residential Facility (JRF) ADP: 2012 - present

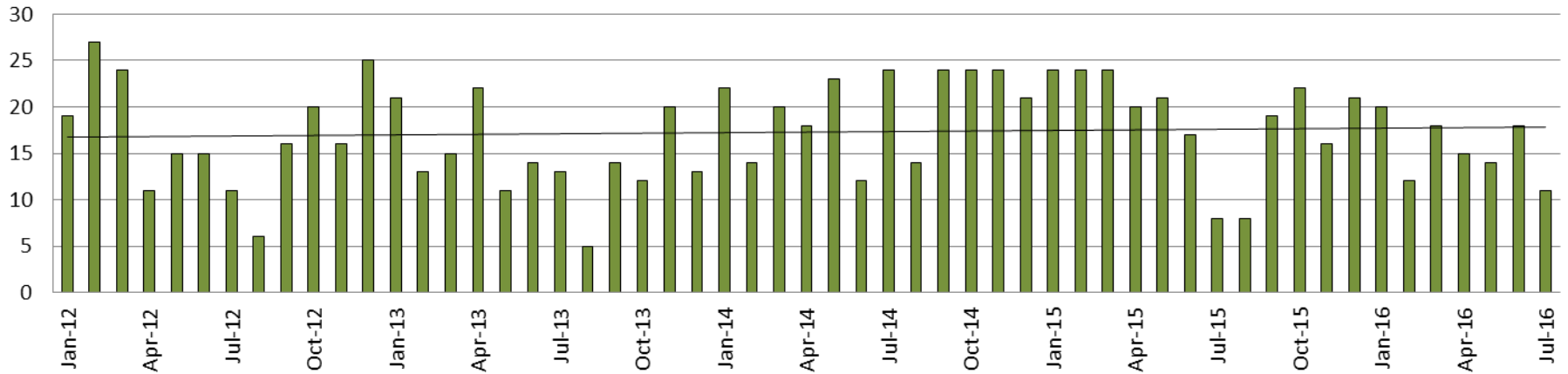


Home-Based Supervision ADP: 2012 - present

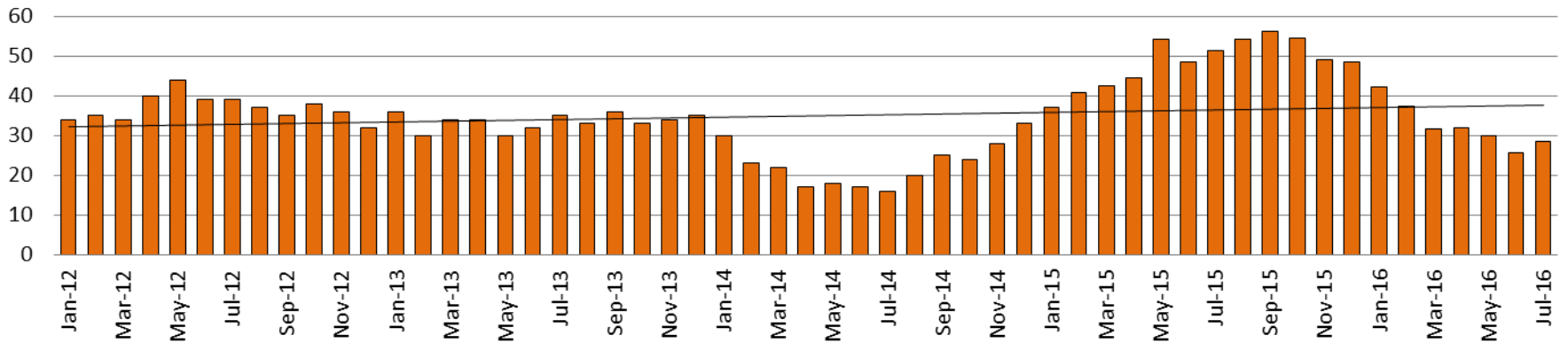


Juvenile Detention Alternatives

Weekend Alternative Detention Program 2012 - present



Detention Advocacy Case Management Services ADP: 2012 - present



Juvenile Detention Services

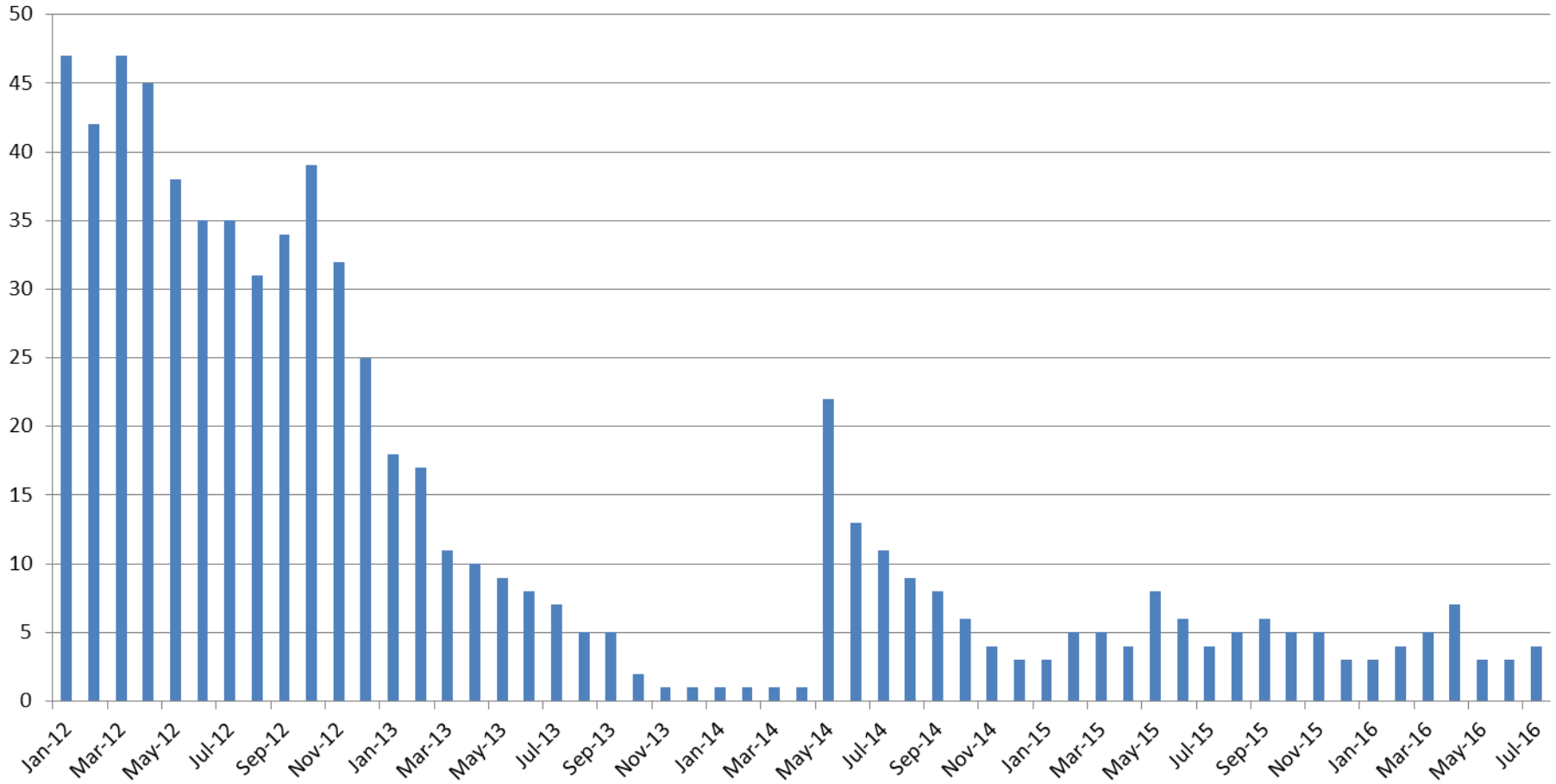
July ADP	2013	2014	2015	2016
Juvenile Detention Facility	48	53	64	55
Juvenile Residential Facility	19	18	13	16
Home Based Supervision	25	26	17	27
Detention Advocacy Case Management Services	35	16	51	29
Weekend Alternative Detention Program (total)	13	24	8	11

July YTD AVERAGE	2013	2014	2015	2016
Juvenile Detention Facility	55	61	64	60
Juvenile Residential Facility	19	18	16	16
Home Based Supervision	28	25	21	26
Detention Advocacy Case Management Services	33	20	46	32
Weekend Alternative Detention Program	16	19	20	15



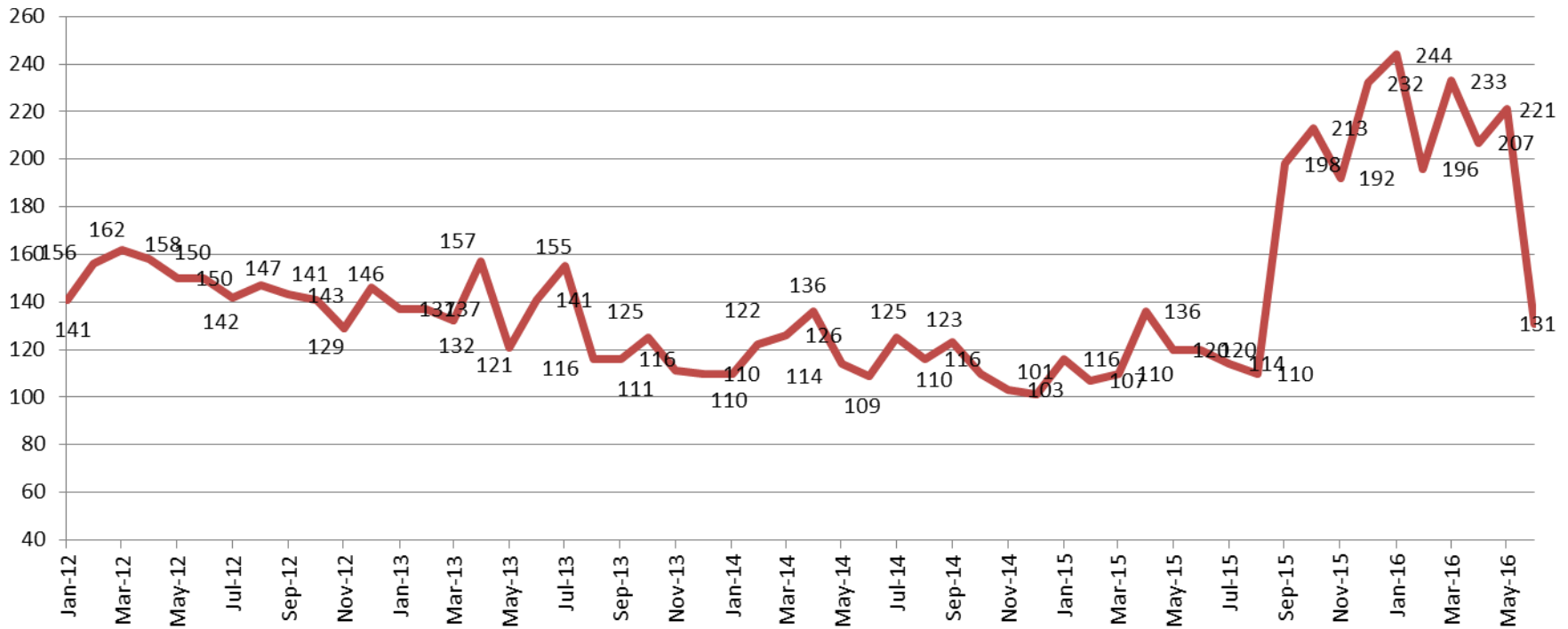
Monthly Jail Snapshot: July 31, 2016

BICE Holds 2012-Present



Monthly Jail Snapshot: July 31, 2016

Felony Commitments: February 2012 - present



July:

2012 = 150

2015 = 120

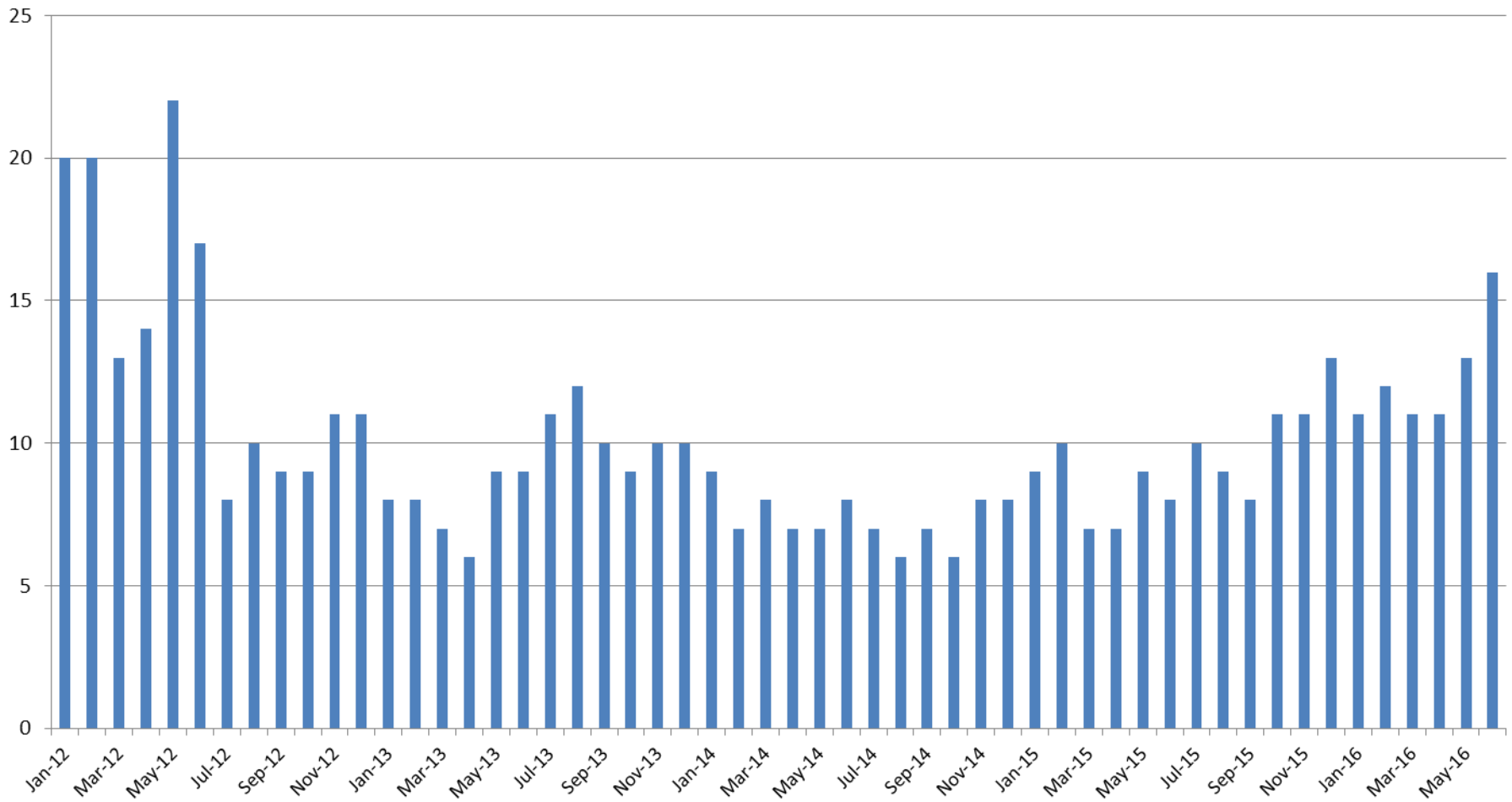
2013 = 141

2016 = 131

2014 = 109



Journal Entry Completion (Average Days) January 2013-Present



This data is always reported a month behind

