

Criminal Justice Coordinating Council

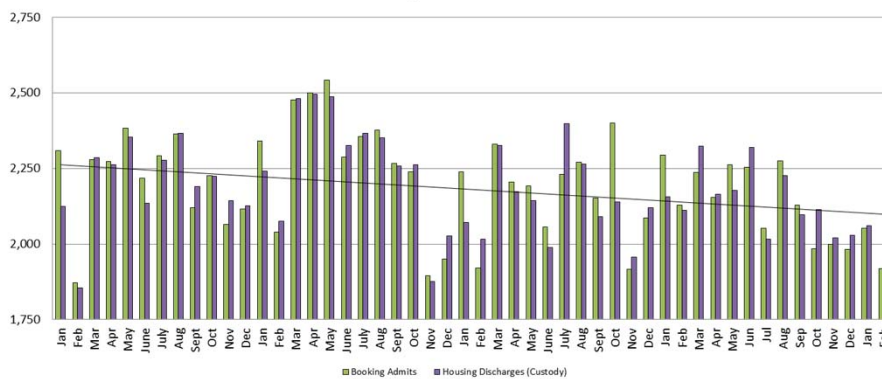
Population Report & Program Trends

March 2017



Detention Facility

**Booking Admits & Housing Discharges from Custody
January 2013 - Present**



Housing Discharges for February

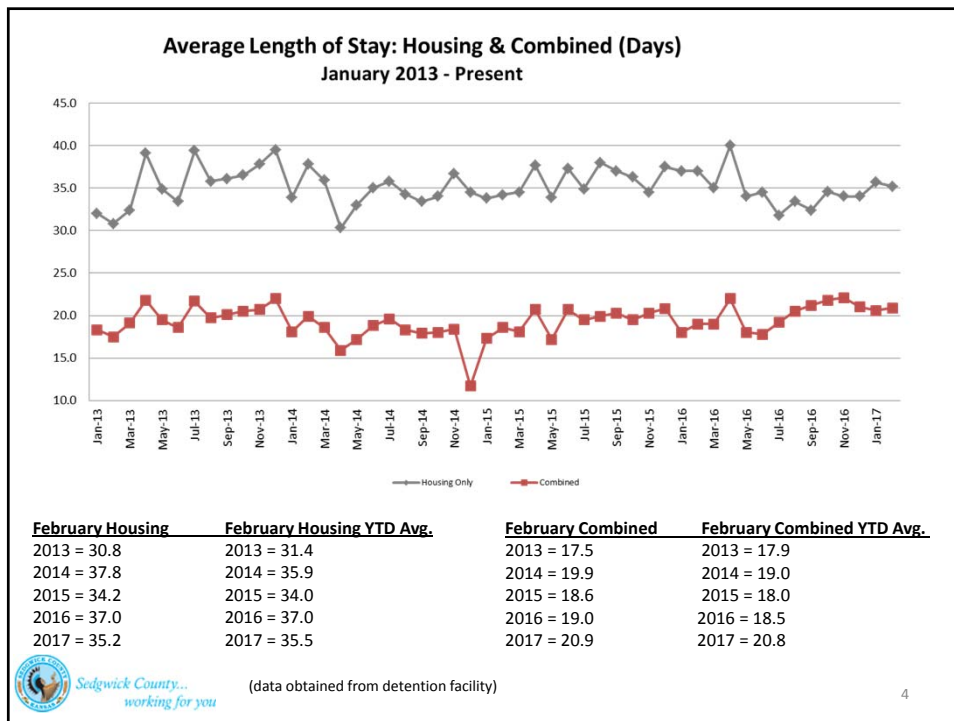
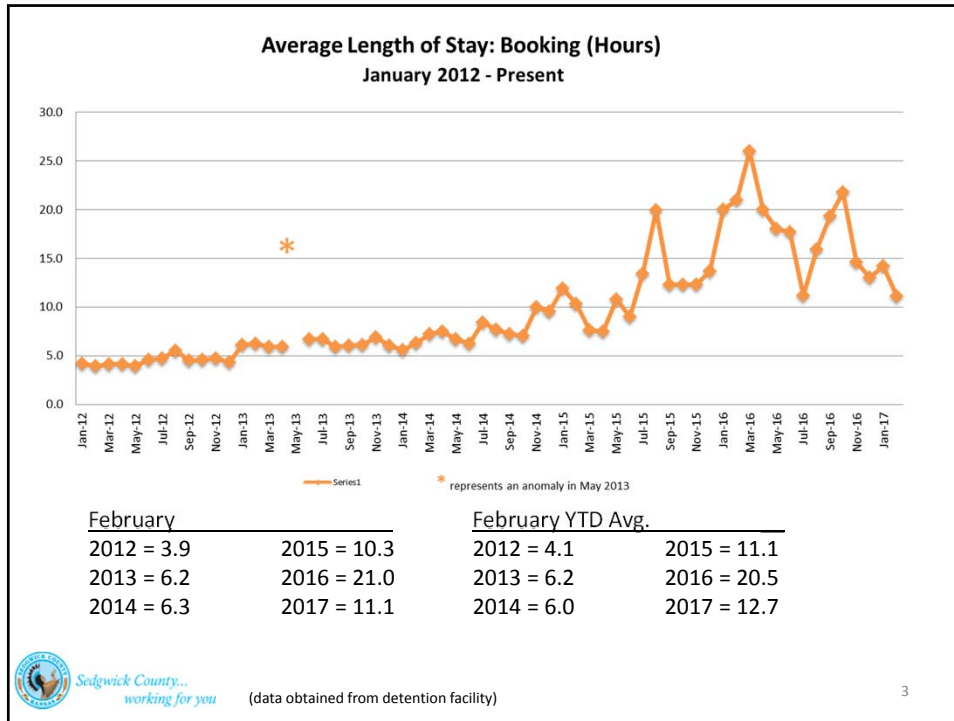
2015 = 2,016
2016 = 2,111
2017 = 1,917

Bookings for February

2015 = 1,921
2016 = 2,128
2017 = 1,919

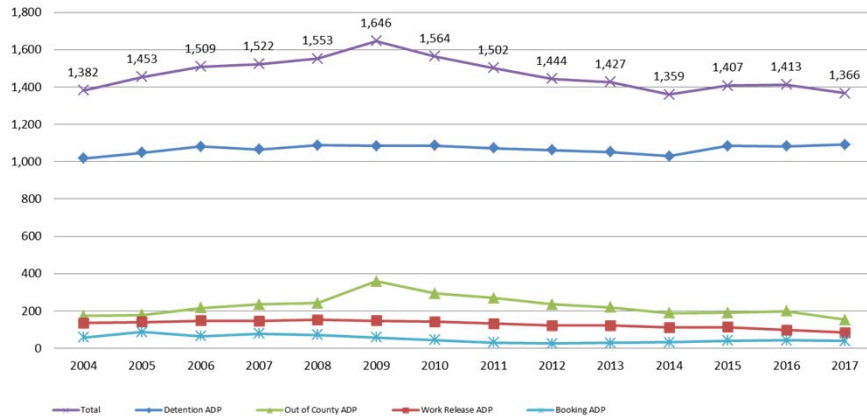


(data obtained from detention facility)



Jail: Annual Average Daily Population (ADP)

TRENDS: Booking, Detention, Work Release, & Out of County
Annual ADP: 2004 - present

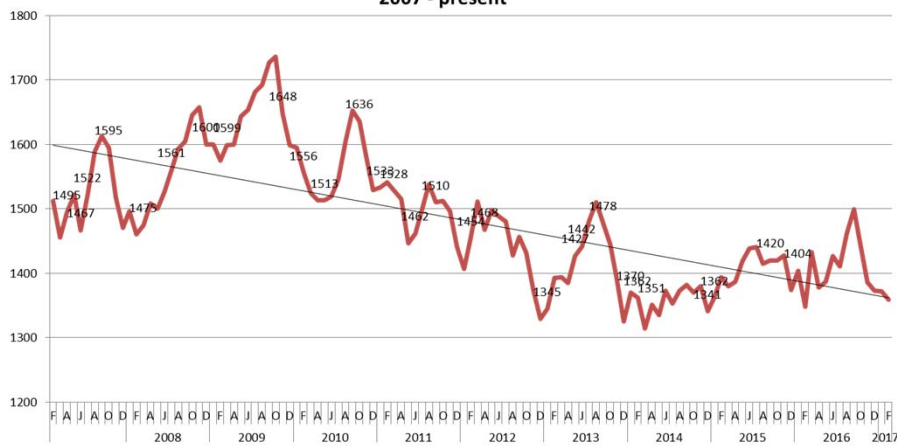


Sedgewick County...
working for you

(data obtained from detention facility)

5

TOTAL MONTHLY ADP: JAIL (Booking, Detention Facility, Work Release, & Out of County) 2007 - present



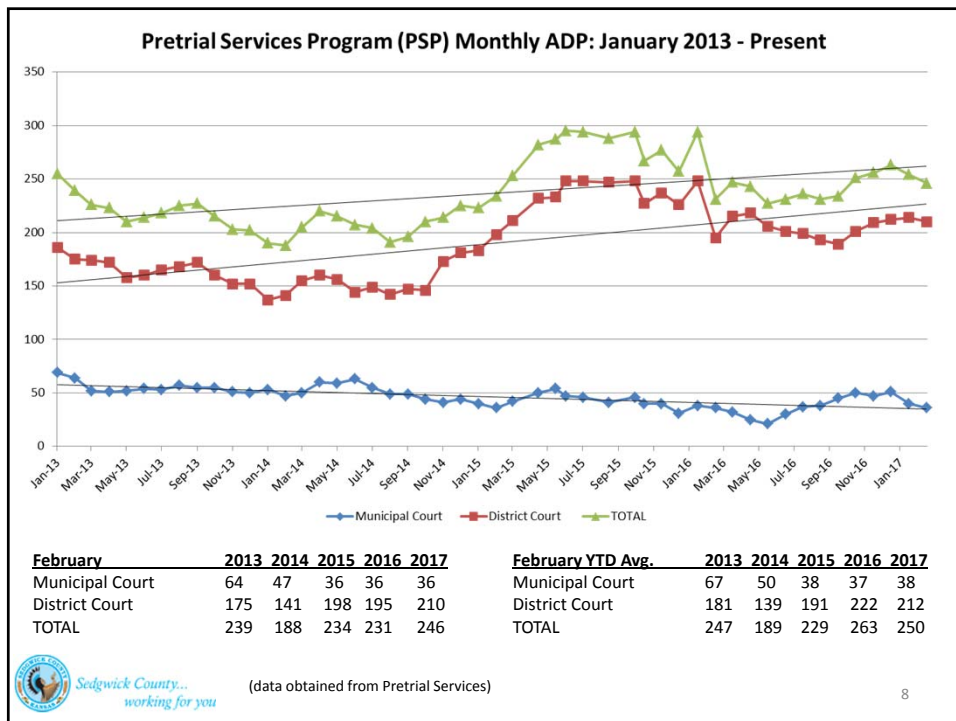
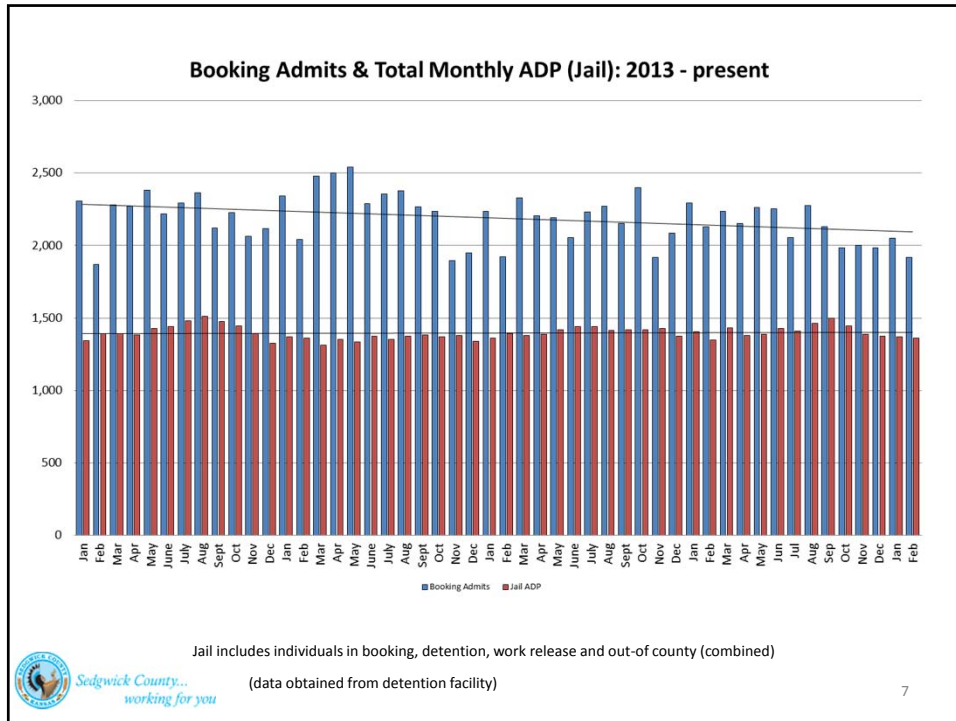
This slide shows total monthly ADP for individuals in booking, detention, work release and out-of county (combined)

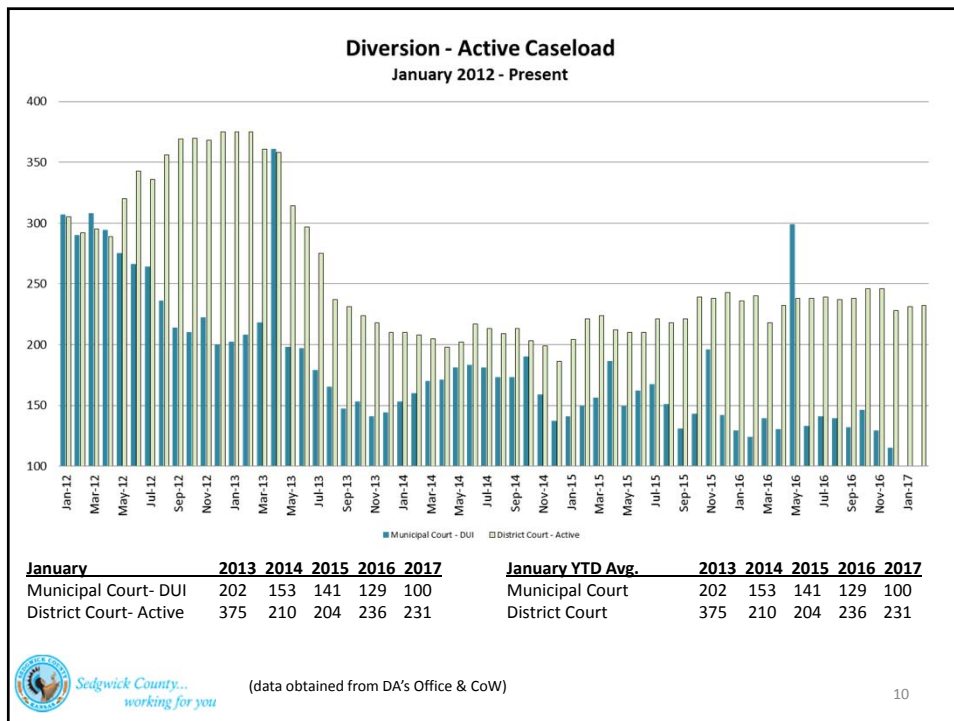
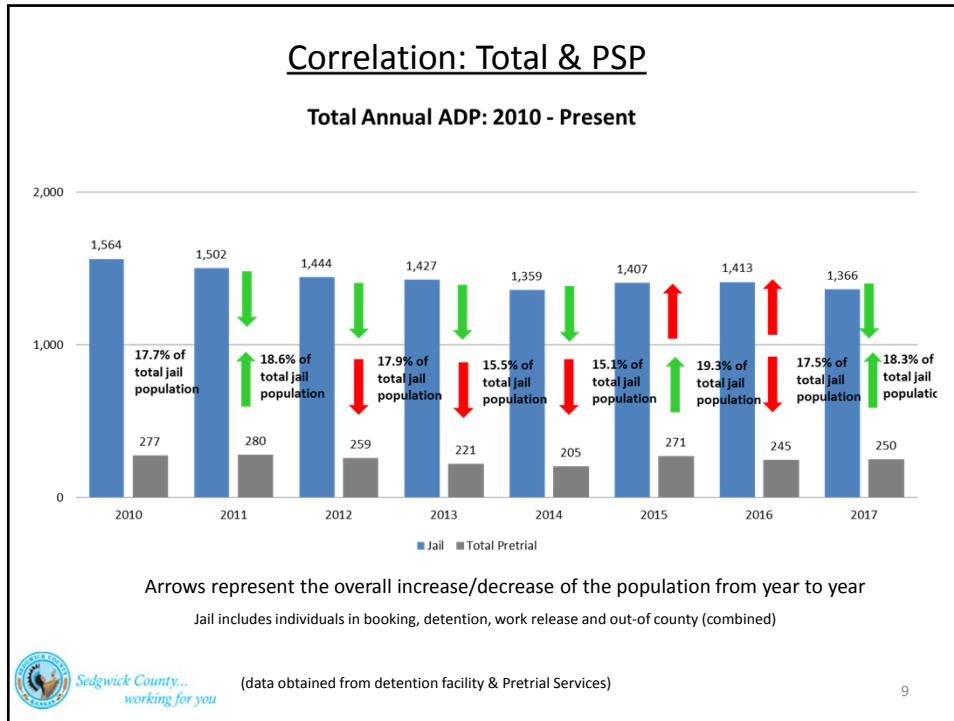


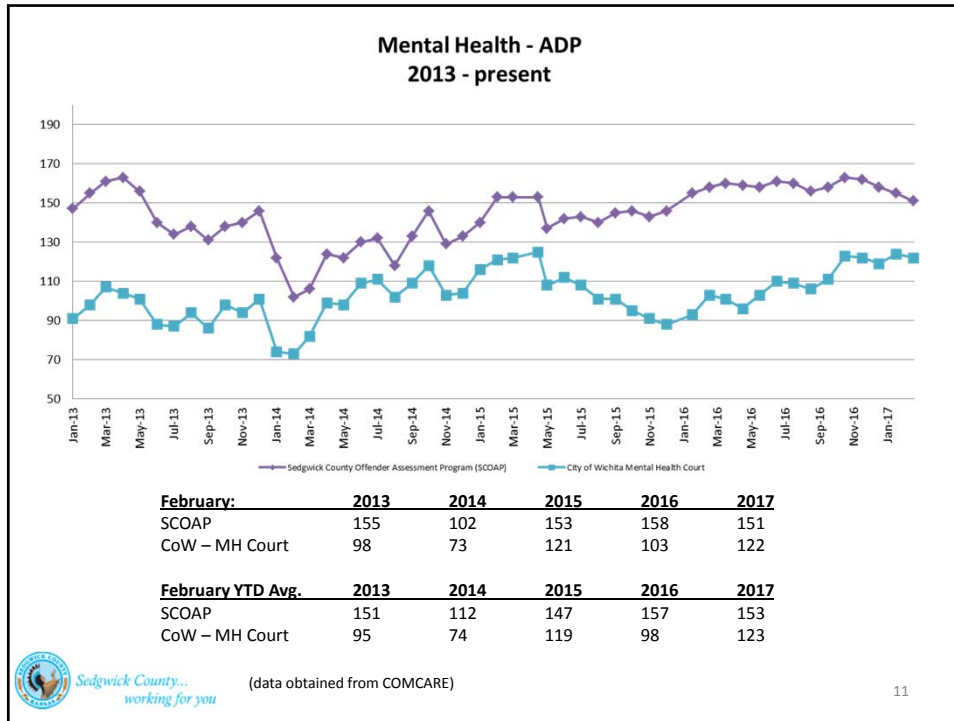
Sedgewick County...
working for you

(data obtained from detention facility)

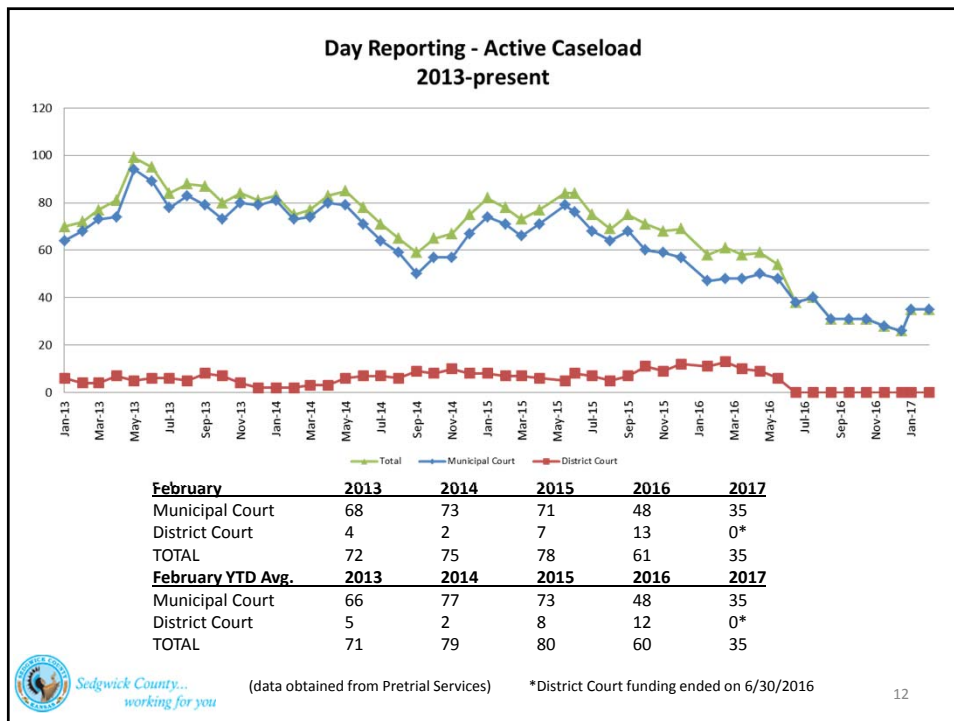
6



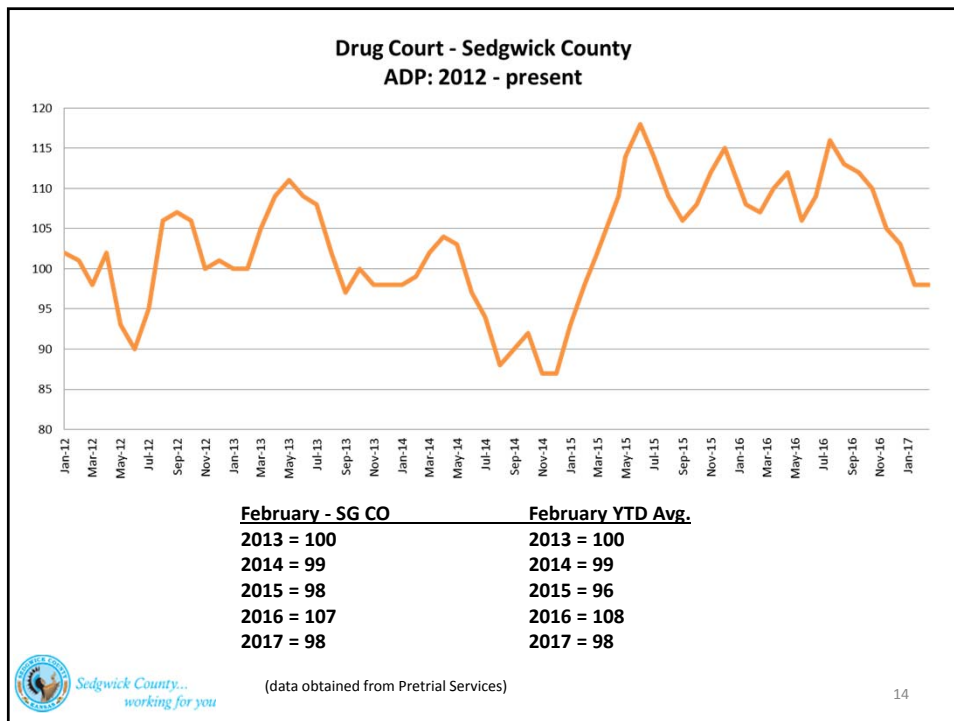
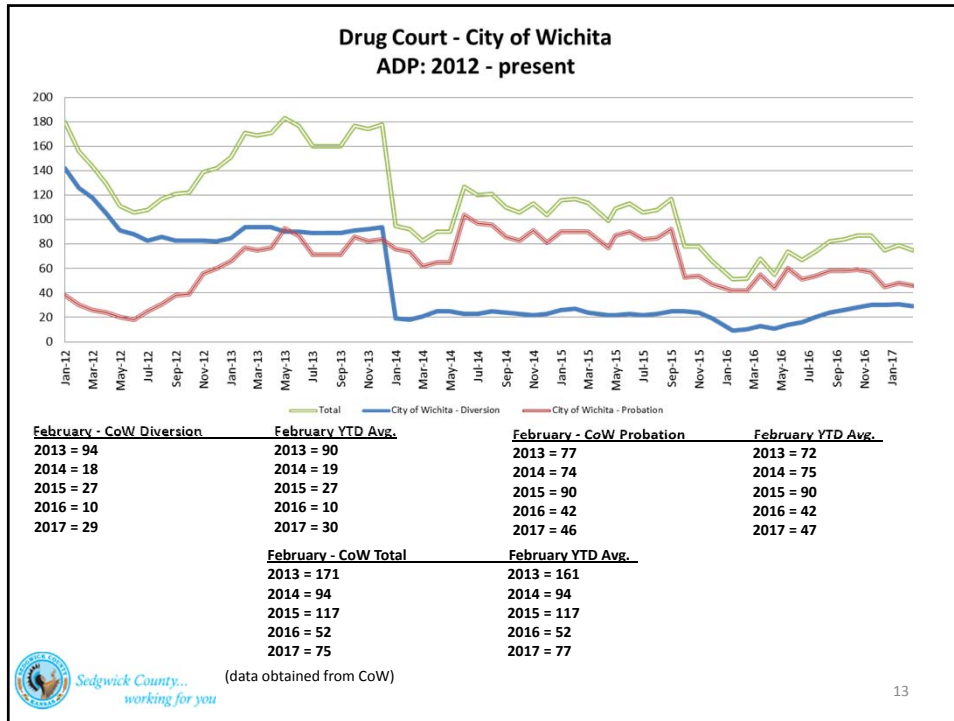


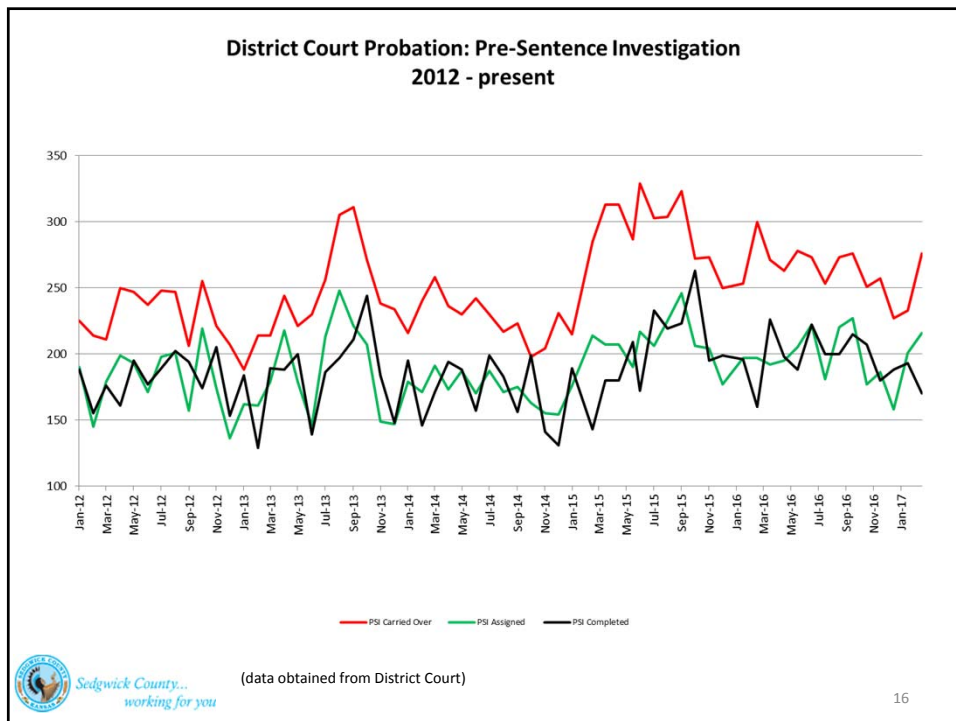
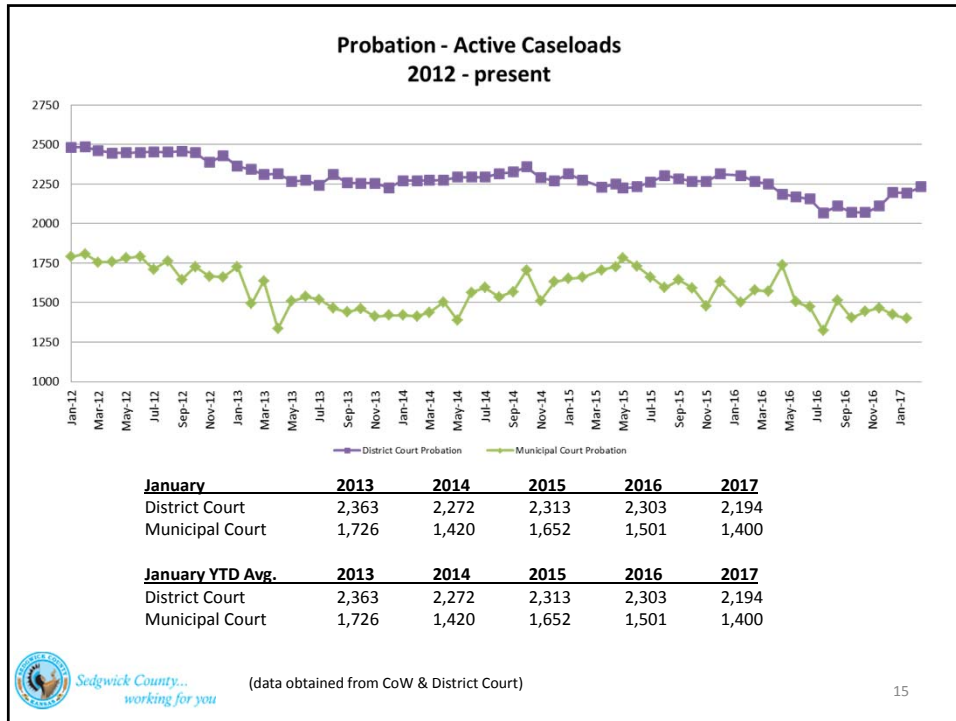


11



12





Community Corrections

**Adult Intensive Supervision Probation (AISP) ADP
2012 - present**



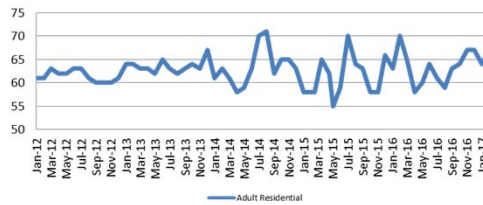
*KDCC changed population count to include drug court, residential and AISP beginning July 2013.

February	February YTD Avg.
2013 = 1,440	2013 = 1,442
2014 = 1,602	2014 = 1,599
2015 = 1,559	2015 = 1,555
2016 = 1,610	2016 = 1,622
2017 = 1,682	2017 = 1,651

(data obtained from SG CO Dept. of Corrections)



**Adult Residential: ADP
2012 - present**

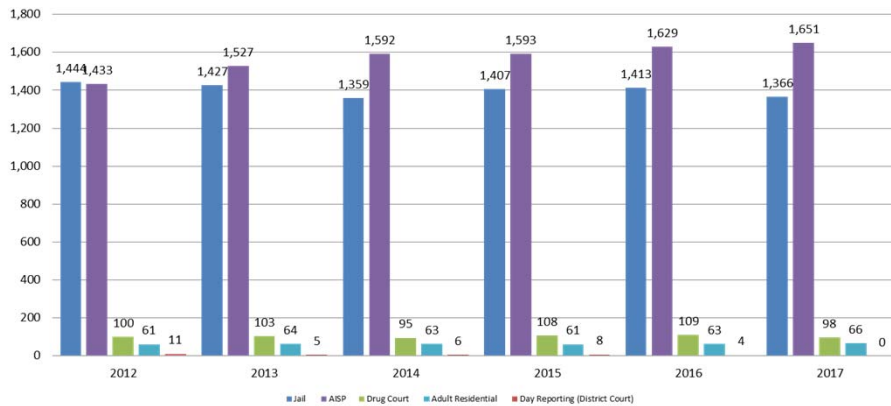


February	February YTD Avg.
2013 = 64	2013 = 64
2014 = 63	2014 = 62
2015 = 58	2015 = 58
2016 = 70	2016 = 67
2017 = 67	2017 = 66

(data obtained from SG CO Dept. of Corrections)

Correlation: Total & Sedgwick County Programs (Adult)

Total Annual ADP: 2012 - Present



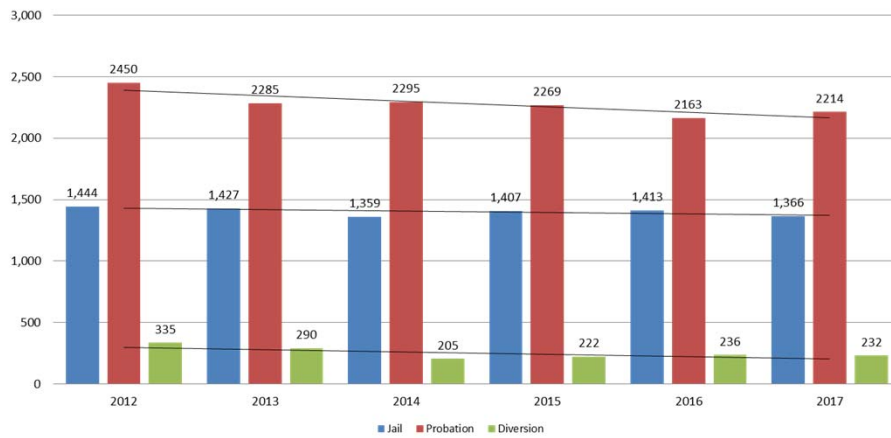
Jail includes individuals in booking, detention, work release and out-of county (combined)



(data obtained from detention facility, SG Dept. of Corrections, Pretrial Services, & CoW)

Correlation: Total & District Court Programs

Total Annual ADP: 2012 - Present



Jail includes individuals in booking, detention, work release and out-of county (combined)

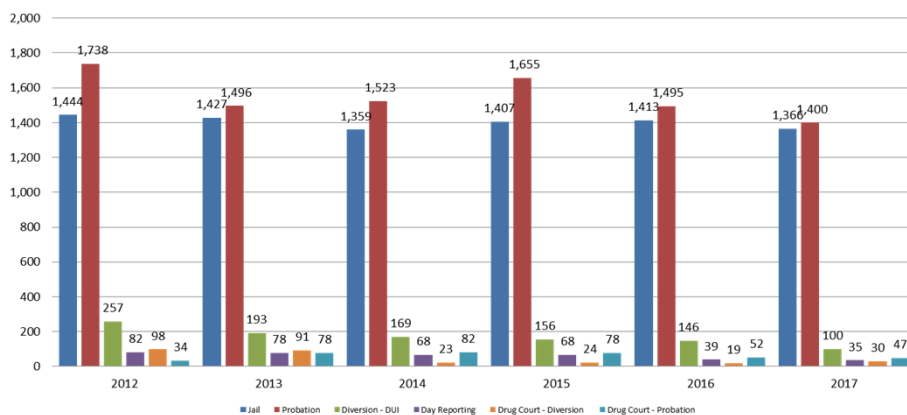


Sedgwick County...
working for you

(data obtained from detention facility, DA's Office, & District Court)

Correlation: Total & City of Wichita / Municipal Court Programs

Total Annual ADP: 2012 - present



Jail includes individuals in booking, detention, work release and out-of county (combined)

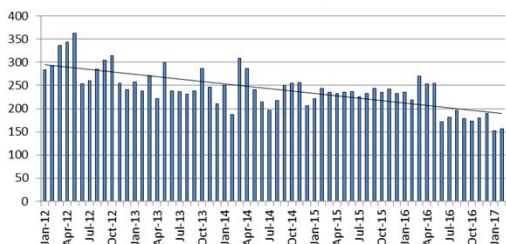


Sedgwick County...
working for you

(data obtained from detention facility, CoW, & Pretrial Services)

Juvenile

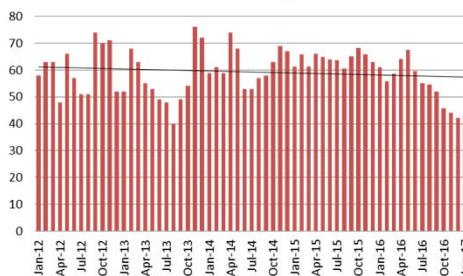
JIAC Intakes: 2012 - present



February	February YTD Average
2013 = 238	2013 = 248
2014 = 187	2014 = 219
2015 = 243	2015 = 232
2016 = 219	2016 = 227
2017 = 156	2017 = 154

(data obtained from SG CO Dept. of Corrections)

JDF ADP: 2012 - present



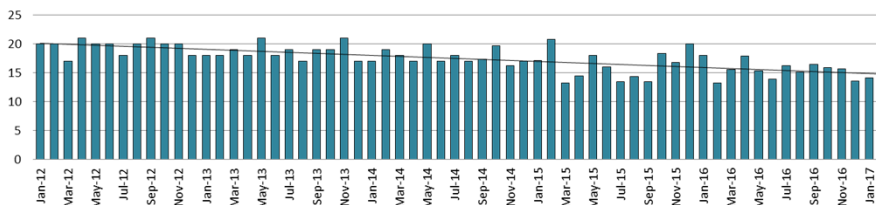
February	February YTD Avg.
2013 = 68	2013 = 60
2014 = 61	2014 = 60
2015 = 66	2015 = 63
2016 = 56	2016 = 58
2017 = 50	2017 = 47

(data obtained from SG CO Dept. of Corrections)

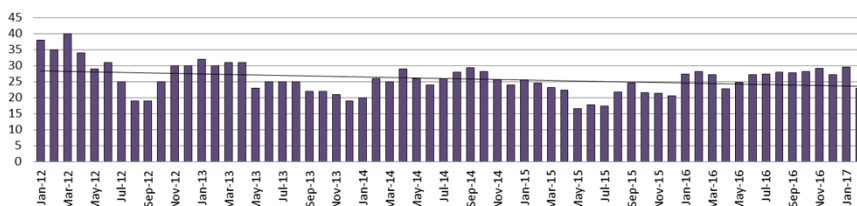


Juvenile Detention Alternatives

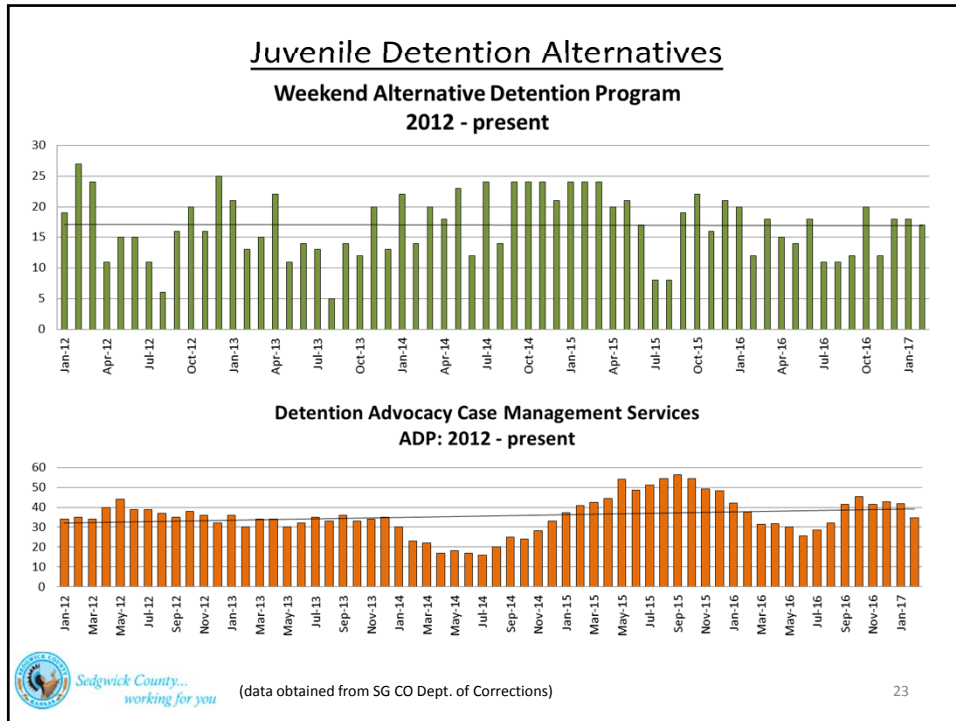
**Juvenile Residential Facility (JRF)
ADP: 2012 - present**



**Home-Based Supervision
ADP: 2012 - present**



(data obtained from SG CO Dept. of Corrections)



Juvenile Detention Services

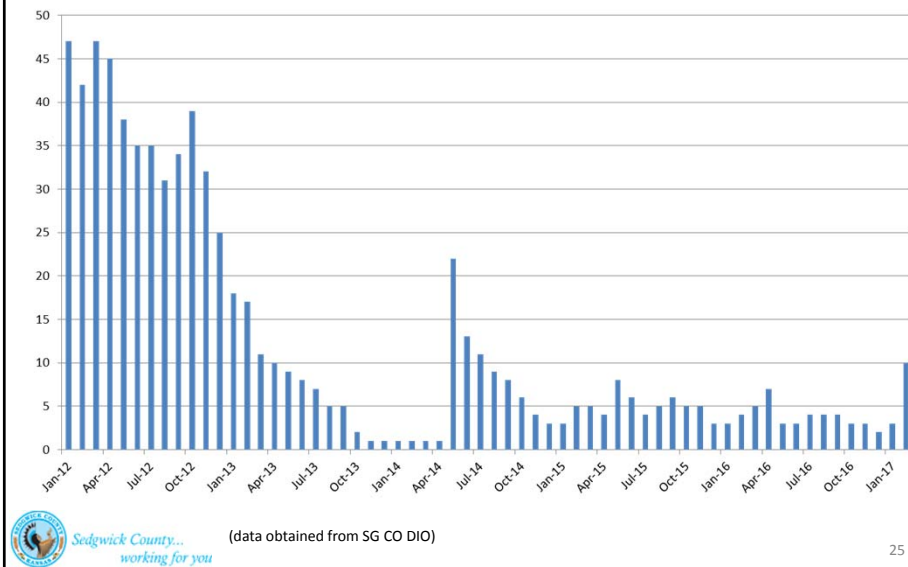
February ADP	2014	2015	2016	2017
Juvenile Detention Facility	61	66	56	50
Juvenile Residential Facility	19	21	13	13
Home Based Supervision	26	25	28	23
Detention Advocacy Case Management Services	23	41	38	35
Weekend Alternative Detention Program (total)	14	24	12	17

February YTD AVERAGE	2014	2015	2016	2017
Juvenile Detention Facility	60	63	58	47
Juvenile Residential Facility	18	19	16	13
Home Based Supervision	23	25	28	26
Detention Advocacy Case Management Services	27	39	40	38
Weekend Alternative Detention Program	18	24	16	18

(data obtained from SG CO Dept. of Corrections)

Monthly Jail Snapshot: February 28, 2017

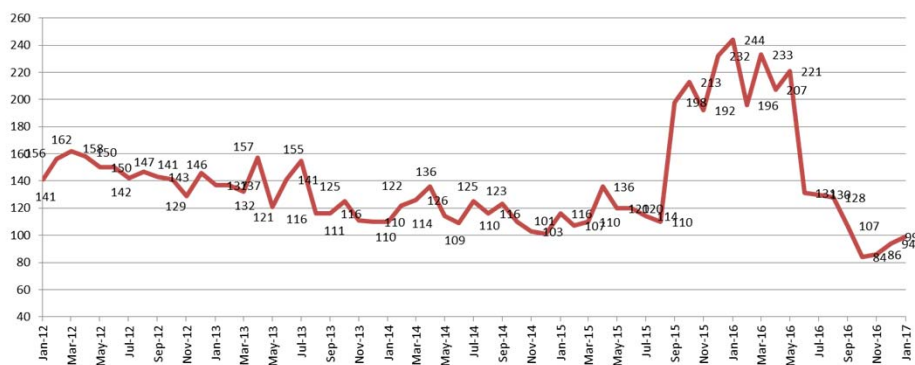
BICE Holds 2012-Present



Sedgewick County...
working for you

Monthly Jail Snapshot: February 28, 2017

Felony Commitments: February 2012 - present



February:

2012 = 141	2015 = 116
2013 = 137	2016 = 244
2014 = 110	2017 = 99



Sedgewick County...
working for you

(data obtained from SG CO DIO)

