

Criminal Justice Coordinating Council

Population Report & Program Trends

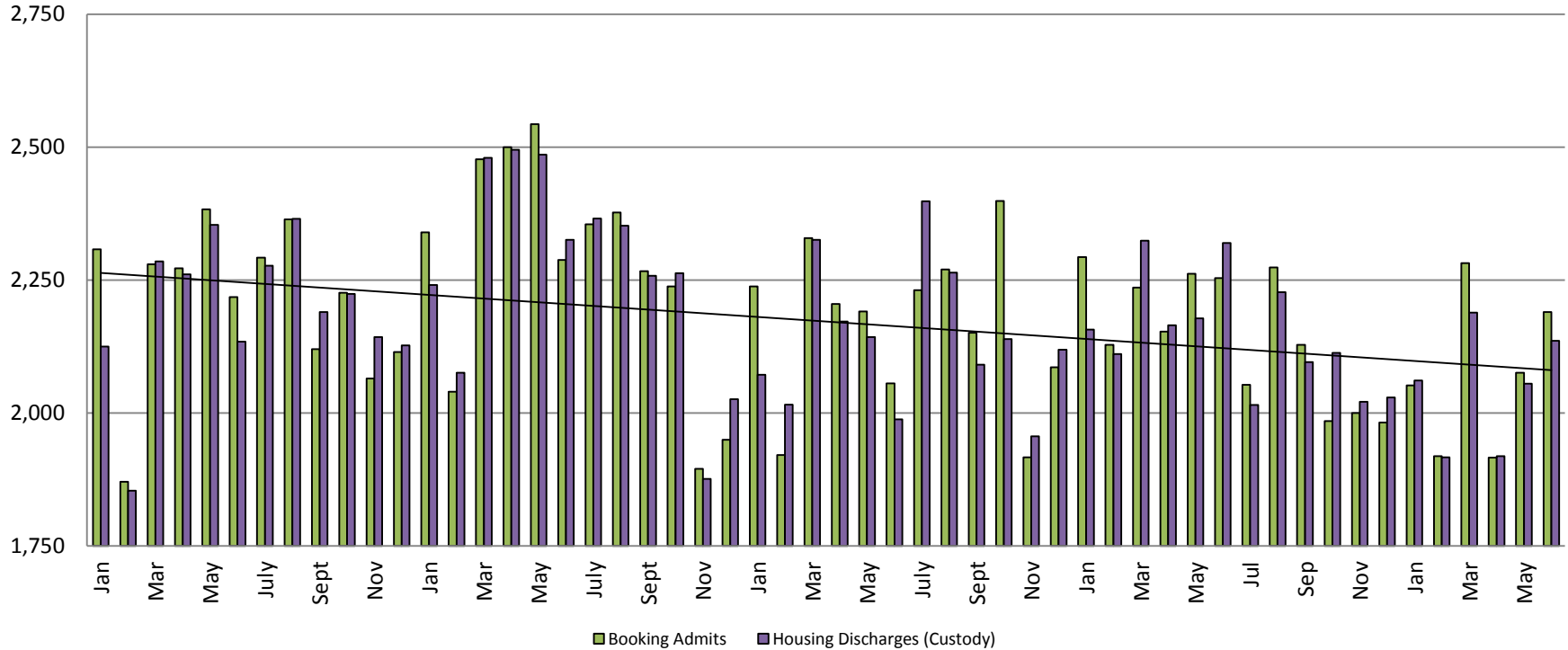
July 2017



Sedgwick County...
working for you

Detention Facility

Booking Admits & Housing Discharges from Custody January 2013 - Present



Housing Discharges for June

2015 = 1,988
 2016 = 2,320
 2017 = 2,136

Bookings for June

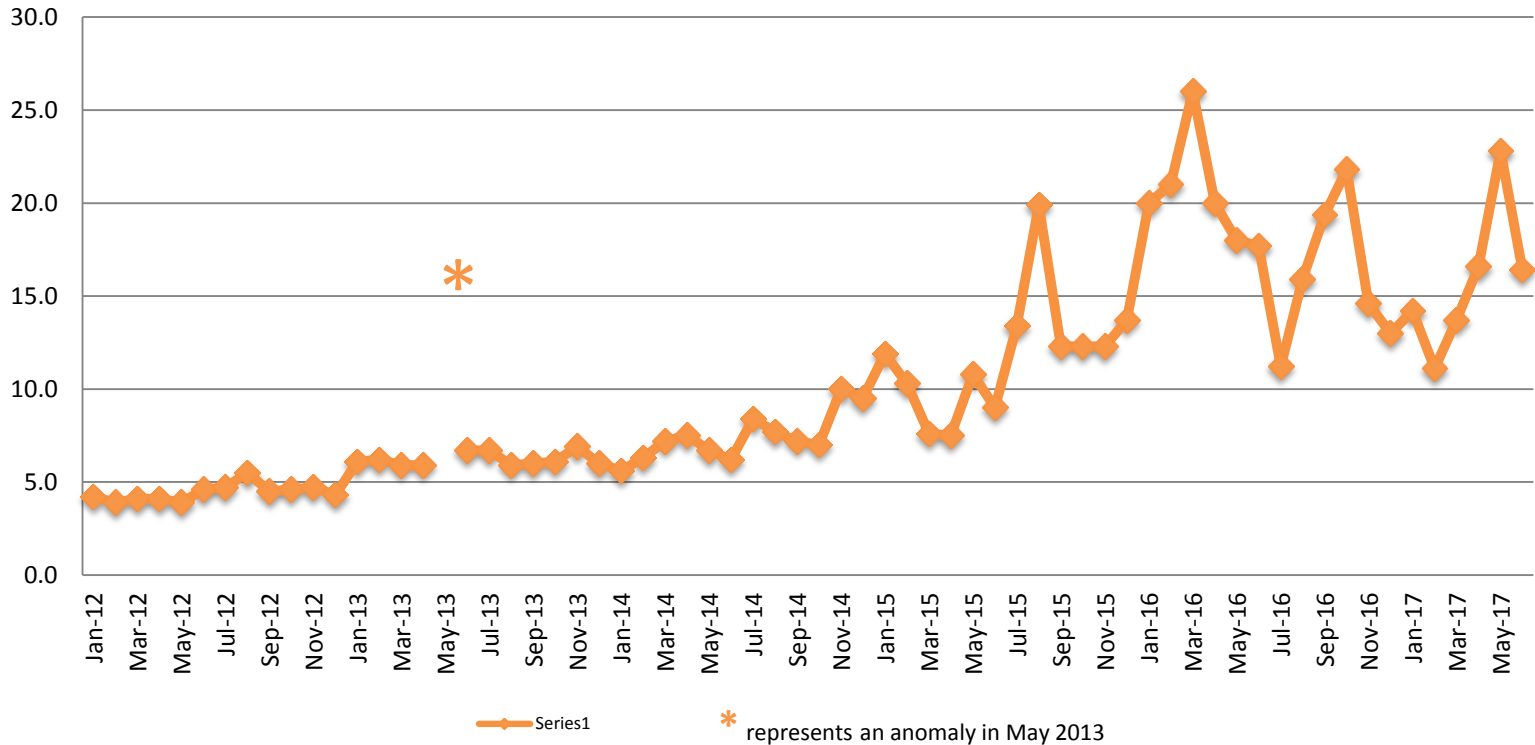
2015 = 2,056
 2016 = 2,254
 2017 = 2,190

(data obtained from detention facility)



Sedgwick County...
 working for you

Average Length of Stay: Booking (Hours) January 2012 - Present



June

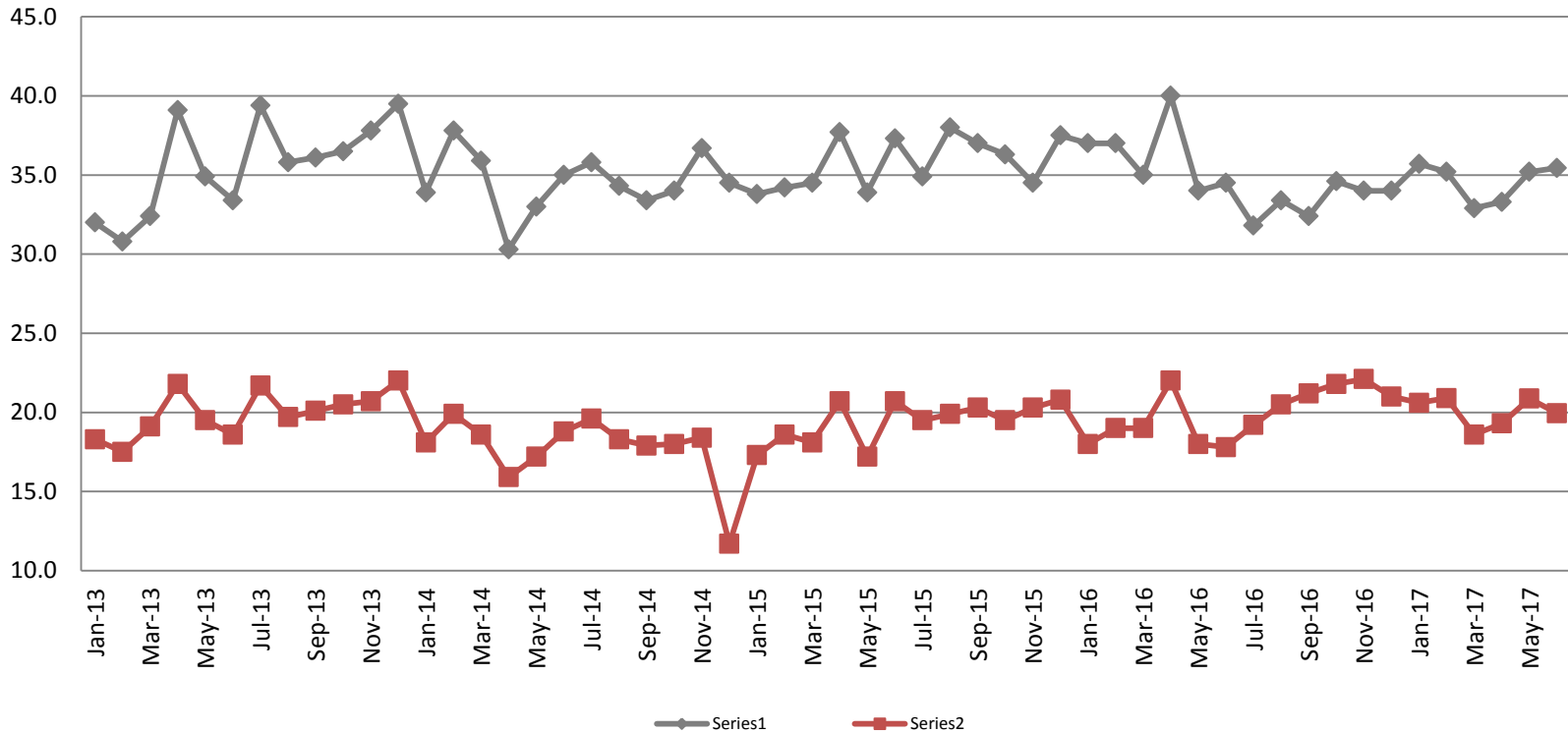
2012 = 4.6	2015 = 9.0
2013 = 6.7	2016 = 18.0
2014 = 6.2	2017 = 22.8

June YTD Avg.

2012 = 4.1	2015 = 9.5
2013 = 17.7	2016 = 20.5
2014 = 16.4	2017 = 15.8



Average Length of Stay: Housing & Combined (Days) January 2013 - Present



June Housing

2013 = 33.4
 2014 = 35.0
 2015 = 37.3
 2016 = 34.5
 2017 = 35.4

June Housing YTD Avg.

2013 = 33.8
 2014 = 34.3
 2015 = 35.2
 2016 = 36.3
 2017 = 34.6

June Combined

2013 = 18.6
 2014 = 18.8
 2015 = 20.7
 2016 = 17.8
 2017 = 20.0

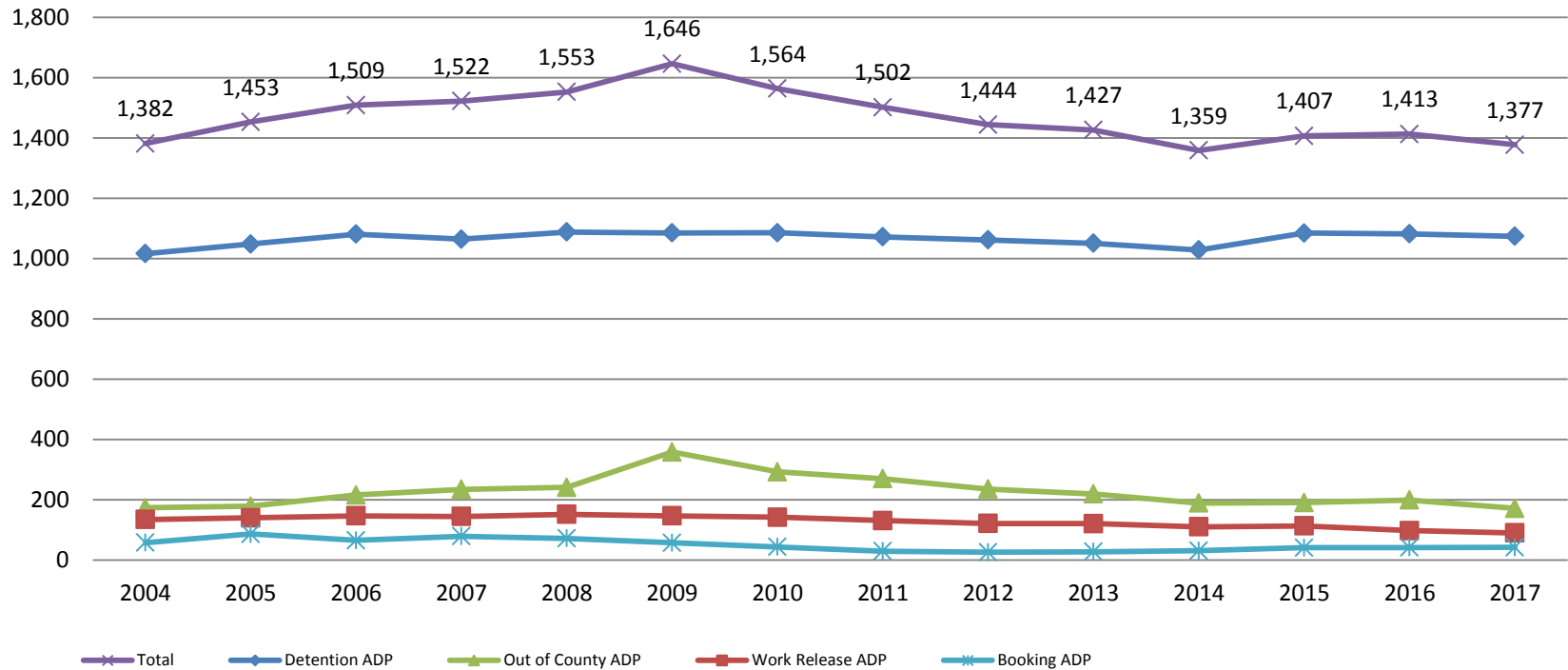
June Combined YTD Avg.

2013 = 19.1
 2014 = 18.1
 2015 = 18.8
 2016 = 19.0
 2017 = 20.0

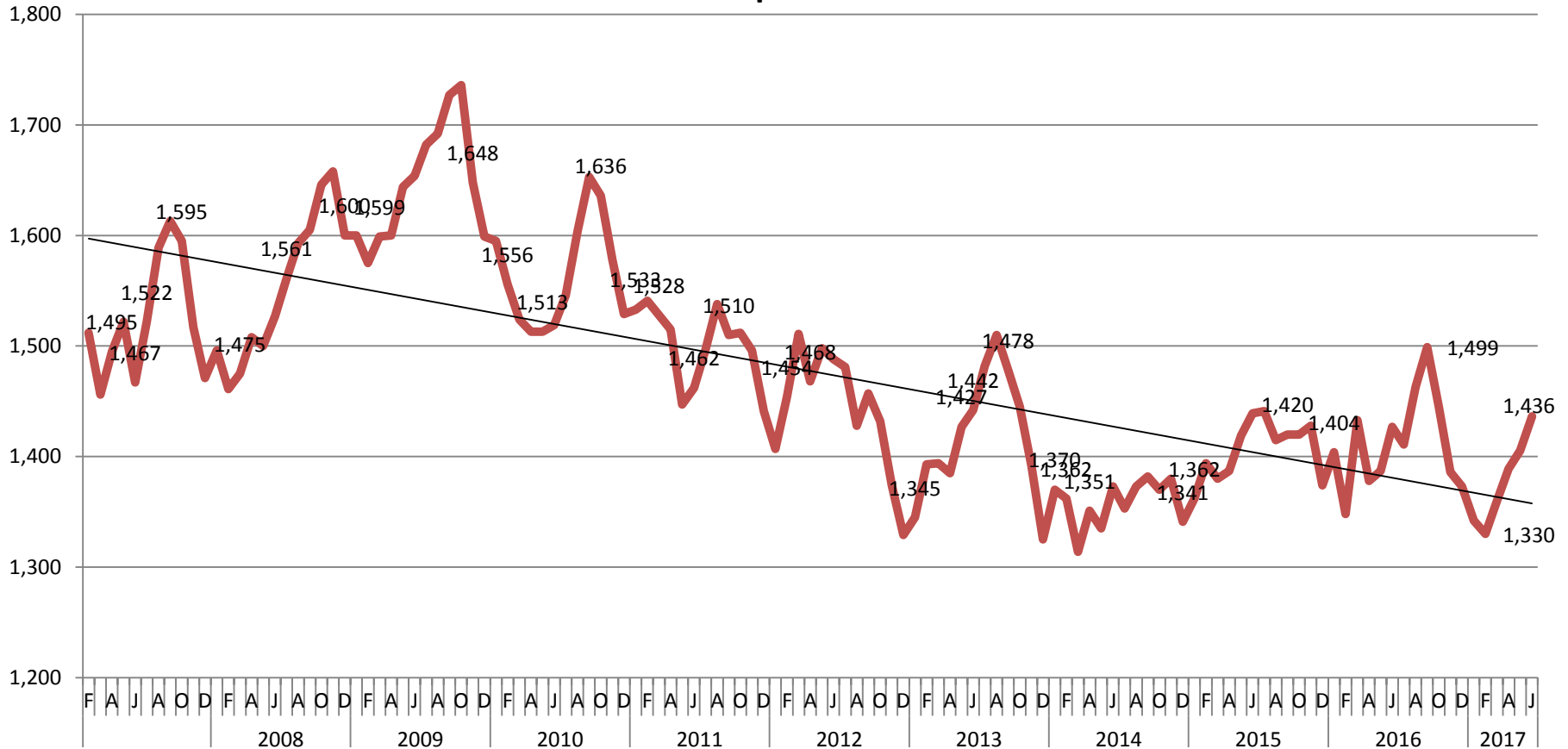


Jail: Annual Average Daily Population (ADP)

TRENDS: Booking, Detention, Work Release, & Out of County
Annual ADP: 2004 - present



TOTAL MONTHLY ADP: JAIL (Booking, Detention Facility, Work Release, & Out of County) 2007 - present



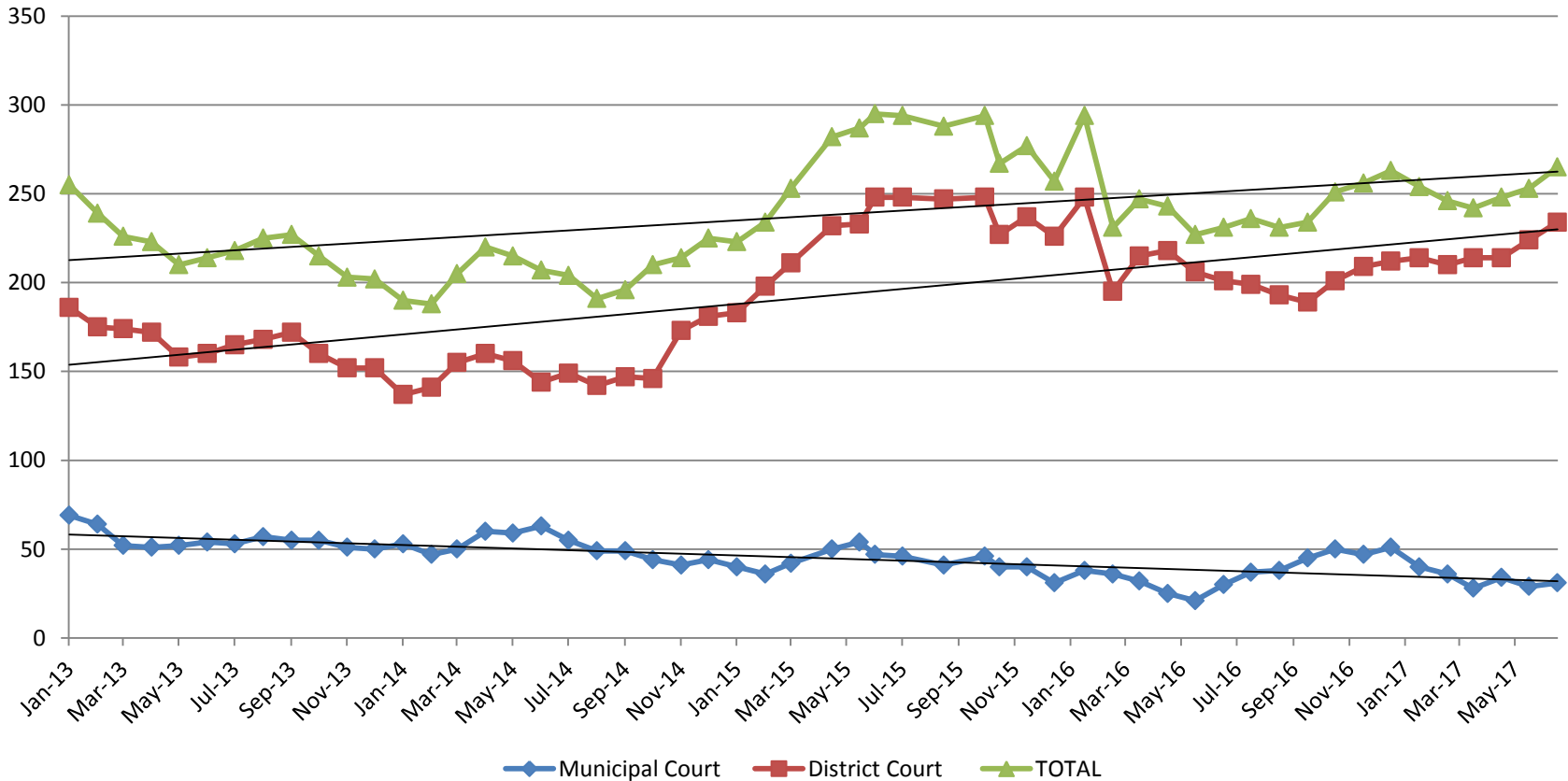
This slide shows total monthly ADP for individuals in booking, detention, work release and out-of county (combined)

(data obtained from detention facility)



Sedgwick County...
working for you

Pretrial Services Program (PSP) Monthly ADP: January 2013 - Present

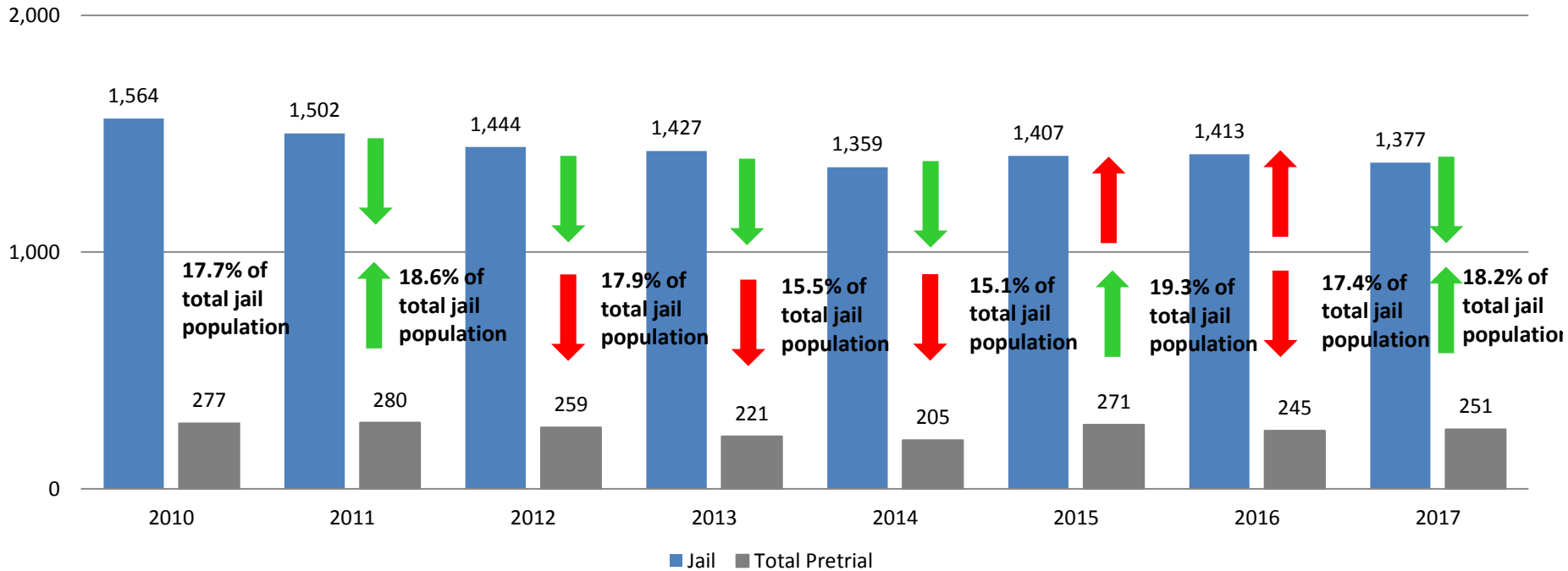


June	2013	2014	2015	2016	2017
Municipal Court	54	63	47	30	31
District Court	160	144	248	201	234
TOTAL	214	207	295	231	265

June YTD Avg.	2013	2014	2015	2016	2017
Municipal Court	57	55	45	30	33
District Court	171	149	218	214	218
TOTAL	228	204	262	246	251

Correlation: Total & PSP

Total Annual ADP: 2010 - Present

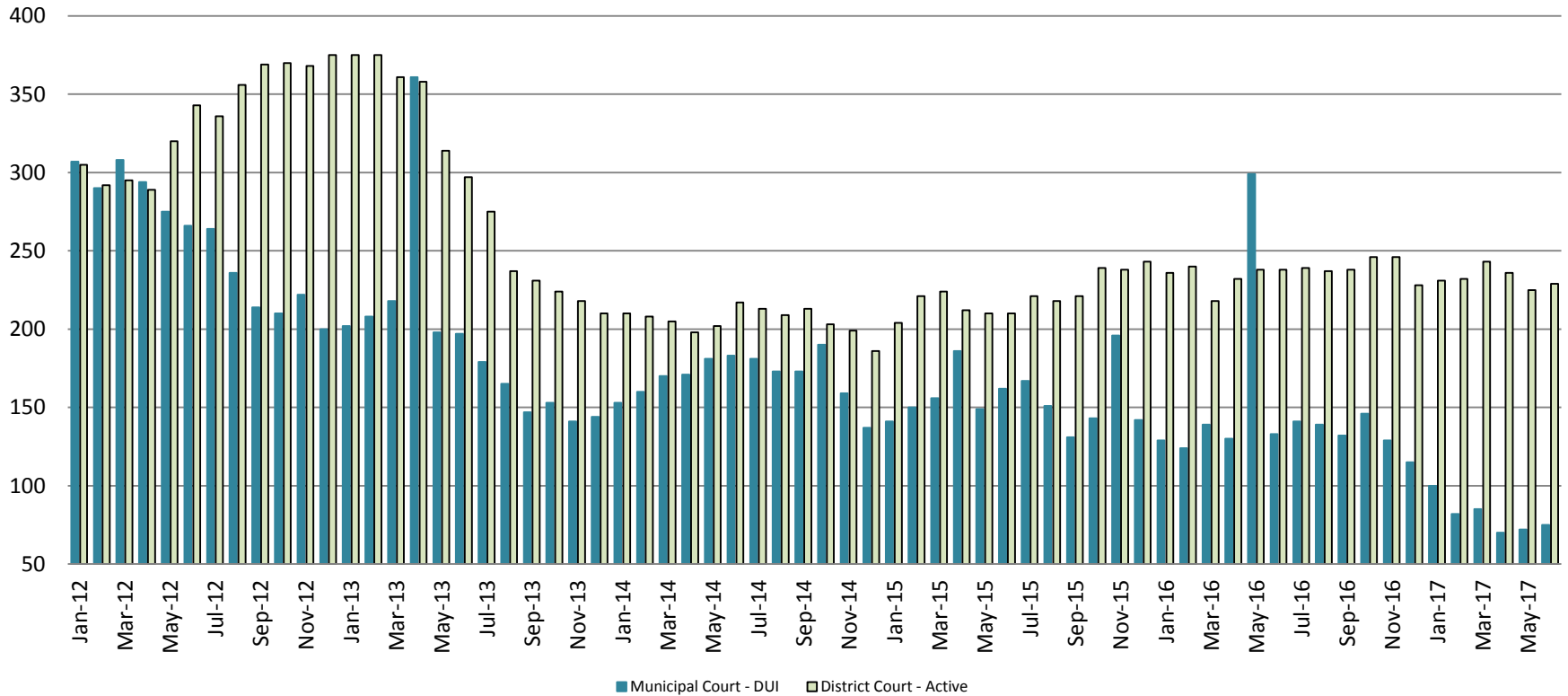


Arrows represent the overall increase/decrease of the population from year to year

Jail includes individuals in booking, detention, work release and out-of county (combined)

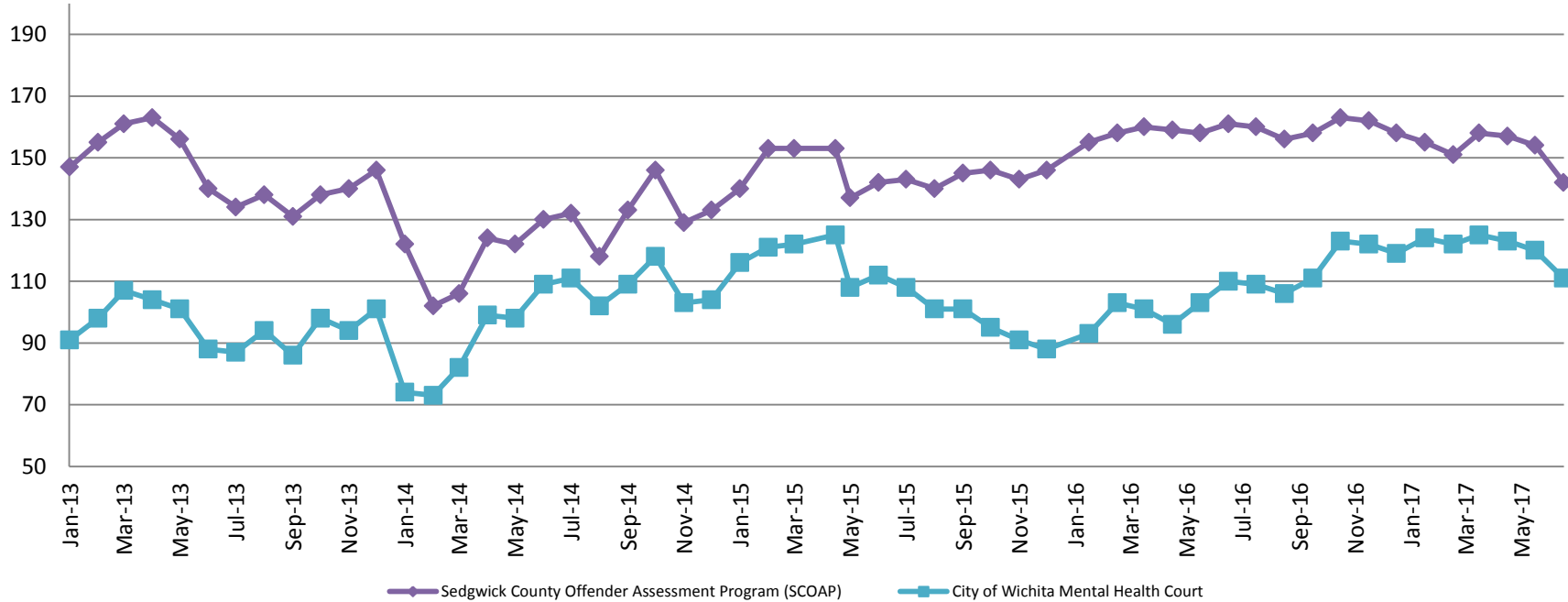


Diversion - Active Caseload January 2012 - Present



<u>June</u>	<u>2013</u>	<u>2014</u>	<u>2015</u>	<u>2016</u>	<u>2017</u>	<u>June YTD Avg.</u>	<u>2013</u>	<u>2014</u>	<u>2015</u>	<u>2016</u>	<u>2017</u>
Municipal Court- DUI	197	183	162	133	75	Municipal Court	231	170	157	159	81
District Court- Active	297	217	210	238	229	District Court	347	207	214	234	233

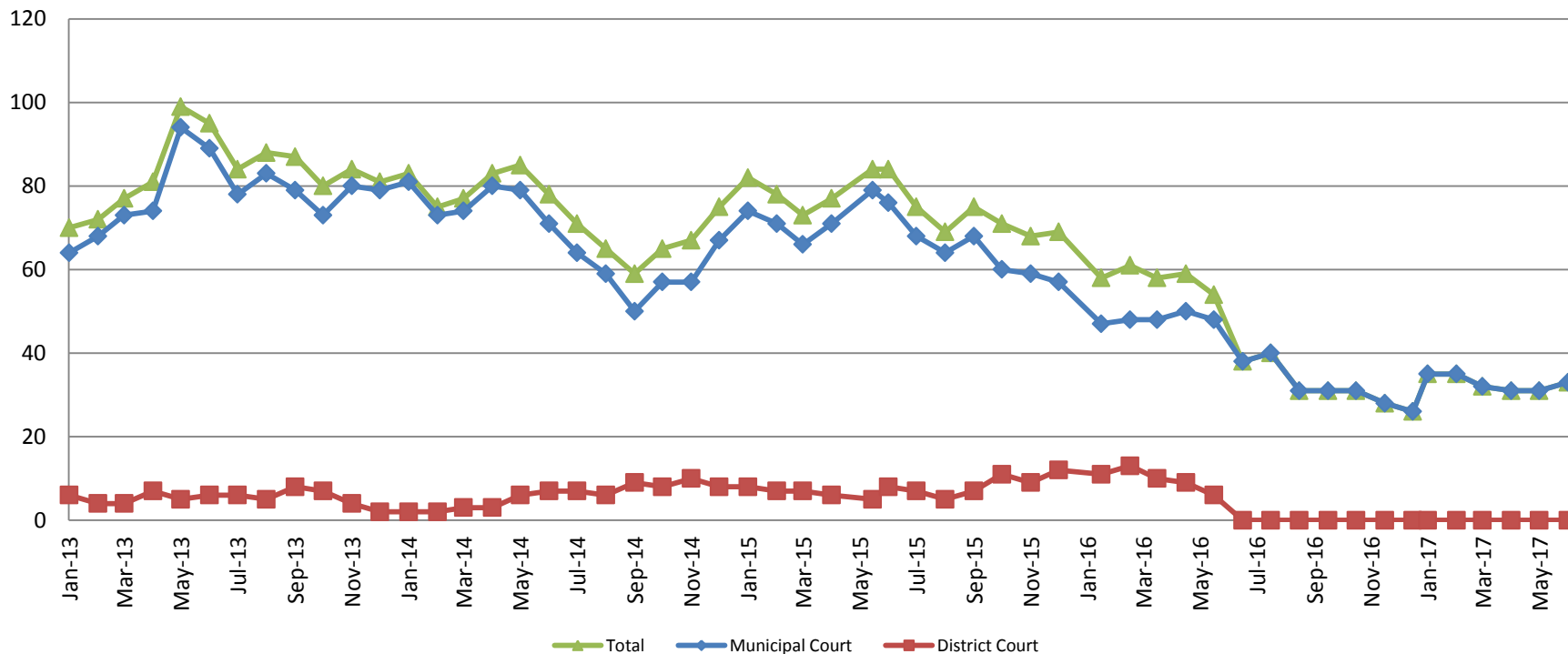
Mental Health - ADP 2013 - present



June:	2013	2014	2015	2016	2017
SCOAP	140	130	142	161	142
CoW – MH Court	88	109	112	110	111
June YTD Avg.	2013	2014	2015	2016	2017
SCOAP	154	118	146	159	153
CoW – MH Court	98	89	117	101	121

(data obtained from COMCARE)

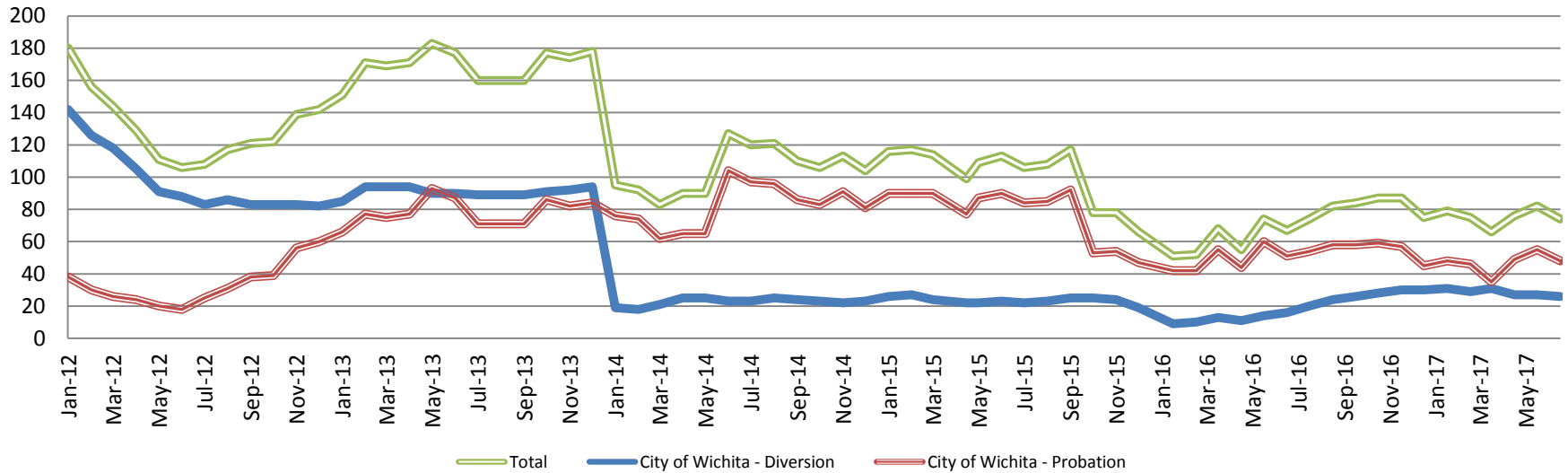
Day Reporting - Active Caseload 2013-present



June	2013	2014	2015	2016	2017
Municipal Court	89	71	76	38	33
District Court	6	7	8	0*	0*
TOTAL	95	78	84	38	33
June YTD Avg.	2013	2014	2015	2016	2017
Municipal Court	77	76	73	47	33
District Court	5	4	7	0*	0*
TOTAL	82	80	80	55	33



Drug Court - City of Wichita ADP: 2012 - present



June CoW Diversion

2013 = 90
2014 = 23
2015 = 23
2016 = 16
2017 = 26

June YTD Avg.

2013 = 91
2014 = 22
2015 = 24
2016 = 12
2017 = 29

June CoW Probation

2013 = 87
2014 = 104
2015 = 90
2016 = 51
2017 = 48

June YTD Avg.

2013 = 79
2014 = 74
2015 = 87
2016 = 49
2017 = 47

June CoW Total

2013 = 177
2014 = 127
2015 = 113
2016 = 67
2017 = 74

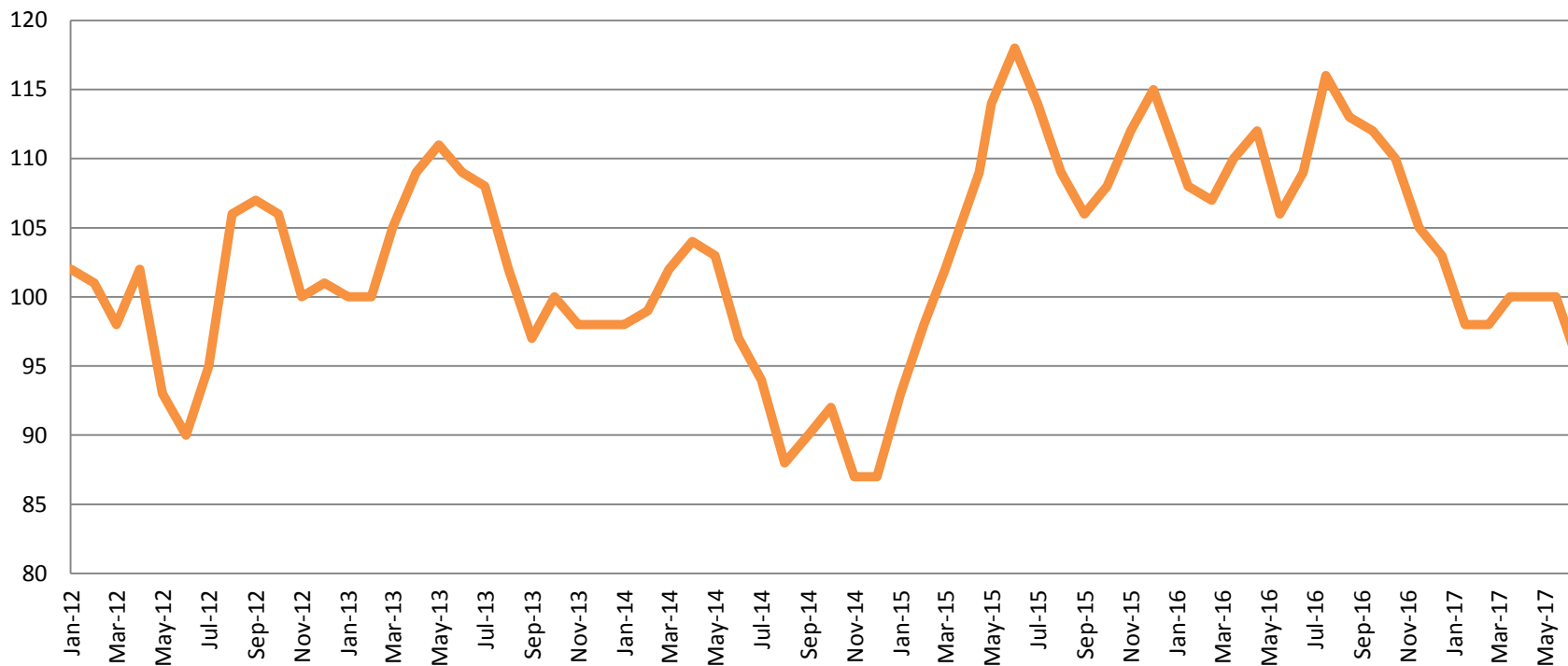
June YTD Avg.

2013 = 170
2014 = 96
2015 = 111
2016 = 61
2017 = 75

(data obtained from CoW)



Drug Court - Sedgwick County ADP: 2012 - present



June SG CO

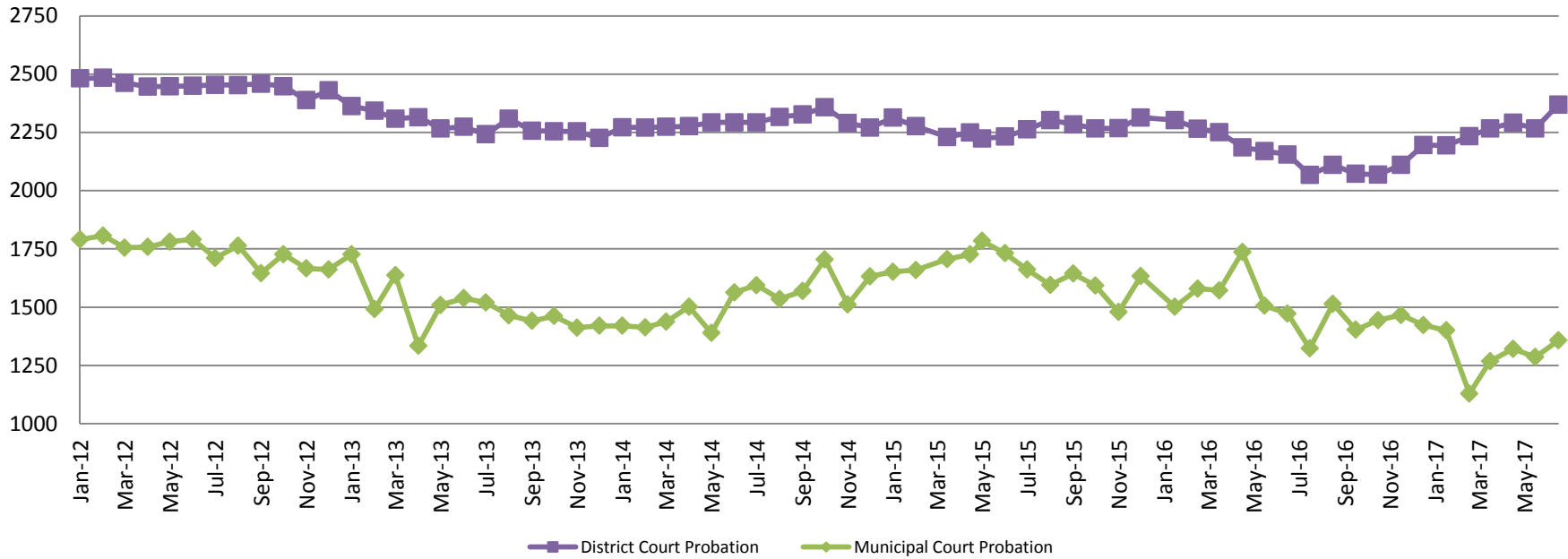
2013 = 109
2014 = 97
2015 = 118
2016 = 109
2017 = 95

June YTD Avg.

2013 = 106
2014 = 101
2015 = 106
2016 = 109
2017 = 99



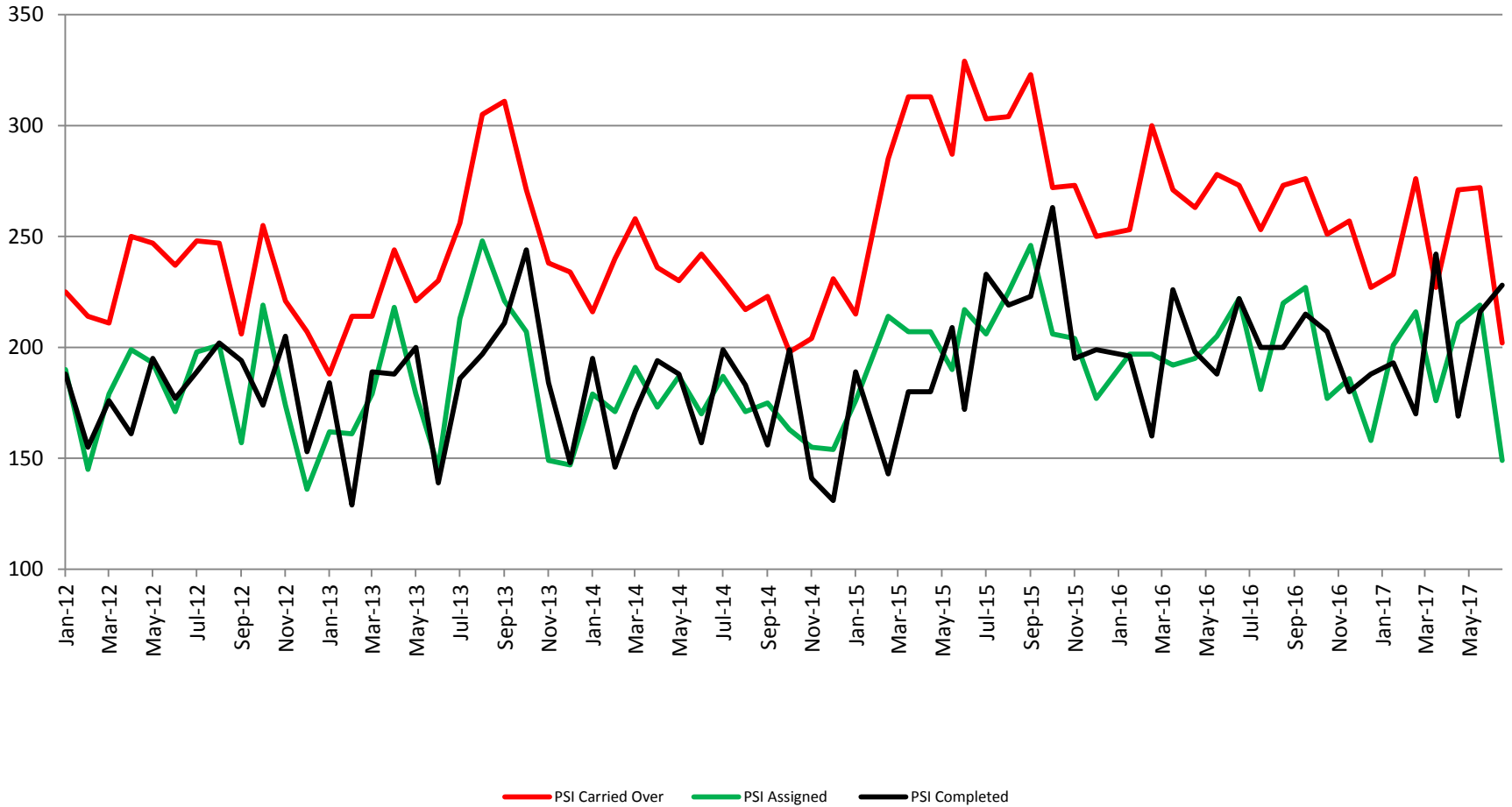
Probation - Active Caseloads 2012 - present



June	2013	2014	2015	2016	2017
District Court	2,274	2,293	2,232	2,155	2,369
Municipal Court	1,538	1,563	1,731	1,472	1,357
June YTD Avg.	2013	2014	2015	2016	2017
District Court	2,312	2,280	2,254	2,222	2,270
Municipal Court	1,539	1,454	1,710	1,561	1,294

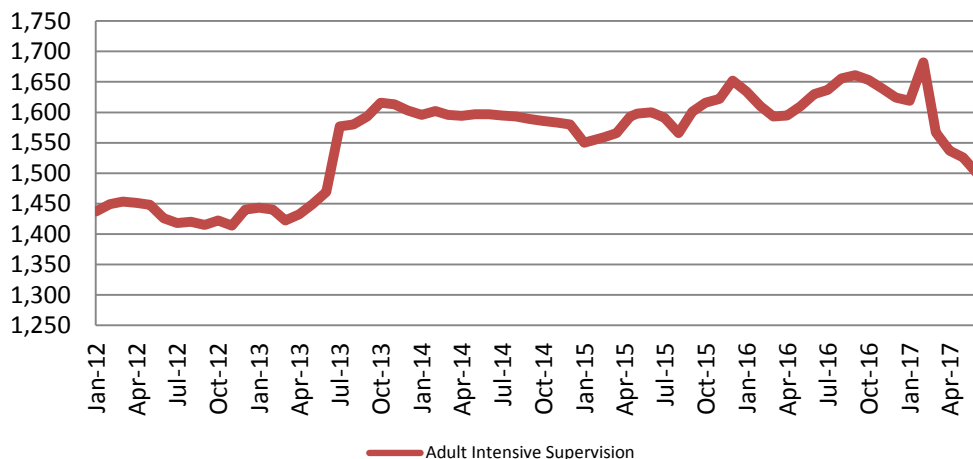
(data obtained from CoW & District Court)

District Court Probation: Pre-Sentence Investigation 2012 - present



Community Corrections

Adult Intensive Supervision Probation (AISP) ADP 2012 - present



June	June YTD Avg.
2013 = 1,469	2013 = 1,443
2014 = 1,597	2014 = 1,597
2015 = 1,600	2015 = 1,578
2016 = 1,630	2016 = 1,612
2017 = 1,500	2017 = 1,572

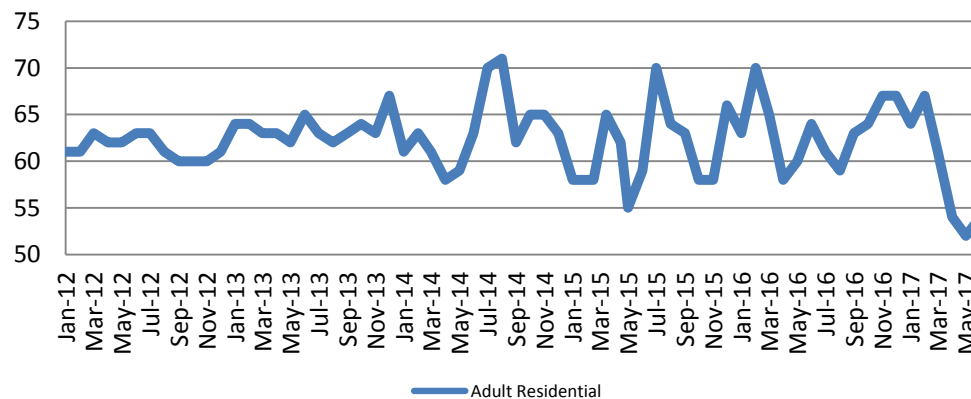
(data obtained from SG CO Dept. of Corrections)

*KDOC changed population count to include drug court, residential and AISP beginning July 2013.

June	June YTD Avg.
2013 = 65	2013 = 64
2014 = 63	2014 = 61
2015 = 59	2015 = 60
2016 = 64	2016 = 63
2017 = 54	2017 = 59

(data obtained from SG CO Dept. of Corrections)

Adult Residential: ADP 2012 - present



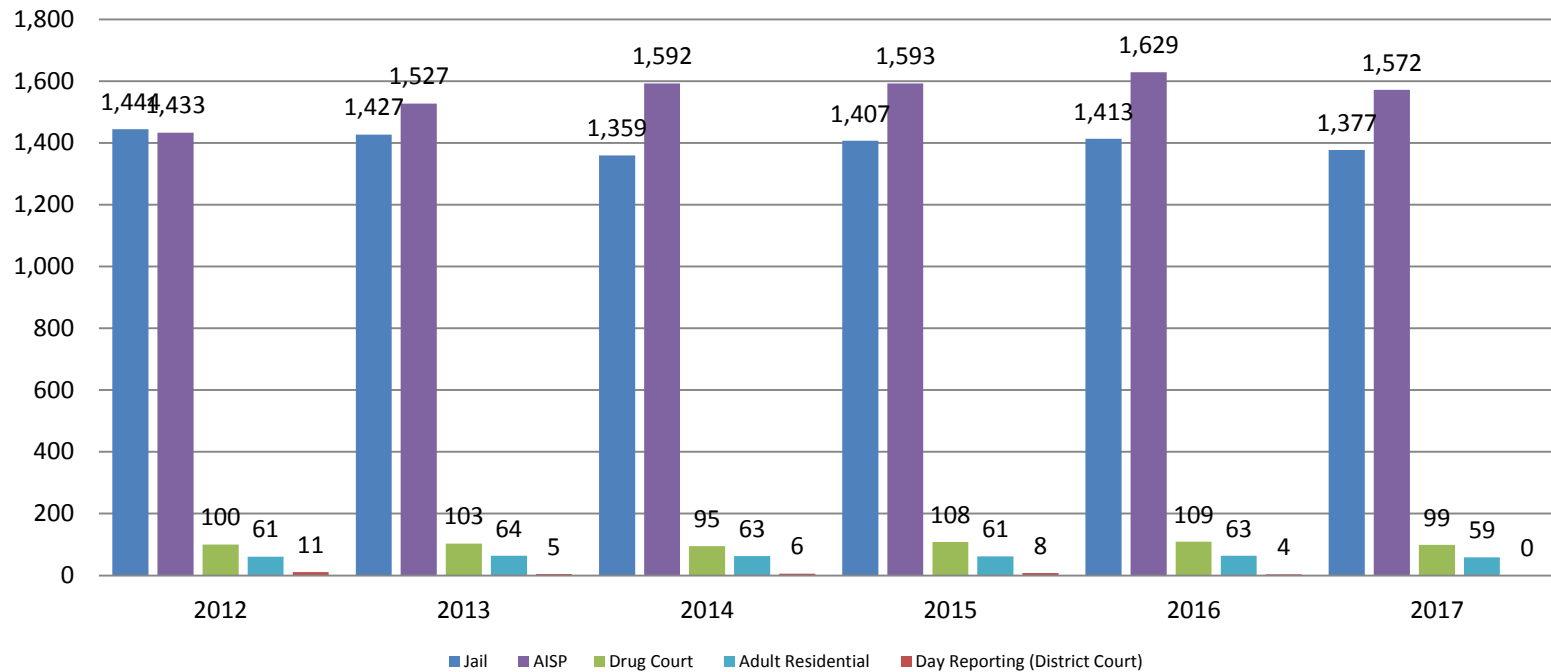
Adult Residential



Sedgwick County...
working for you

Correlation: Total & Sedgwick County Programs (Adult)

Total Annual ADP: 2012 - Present



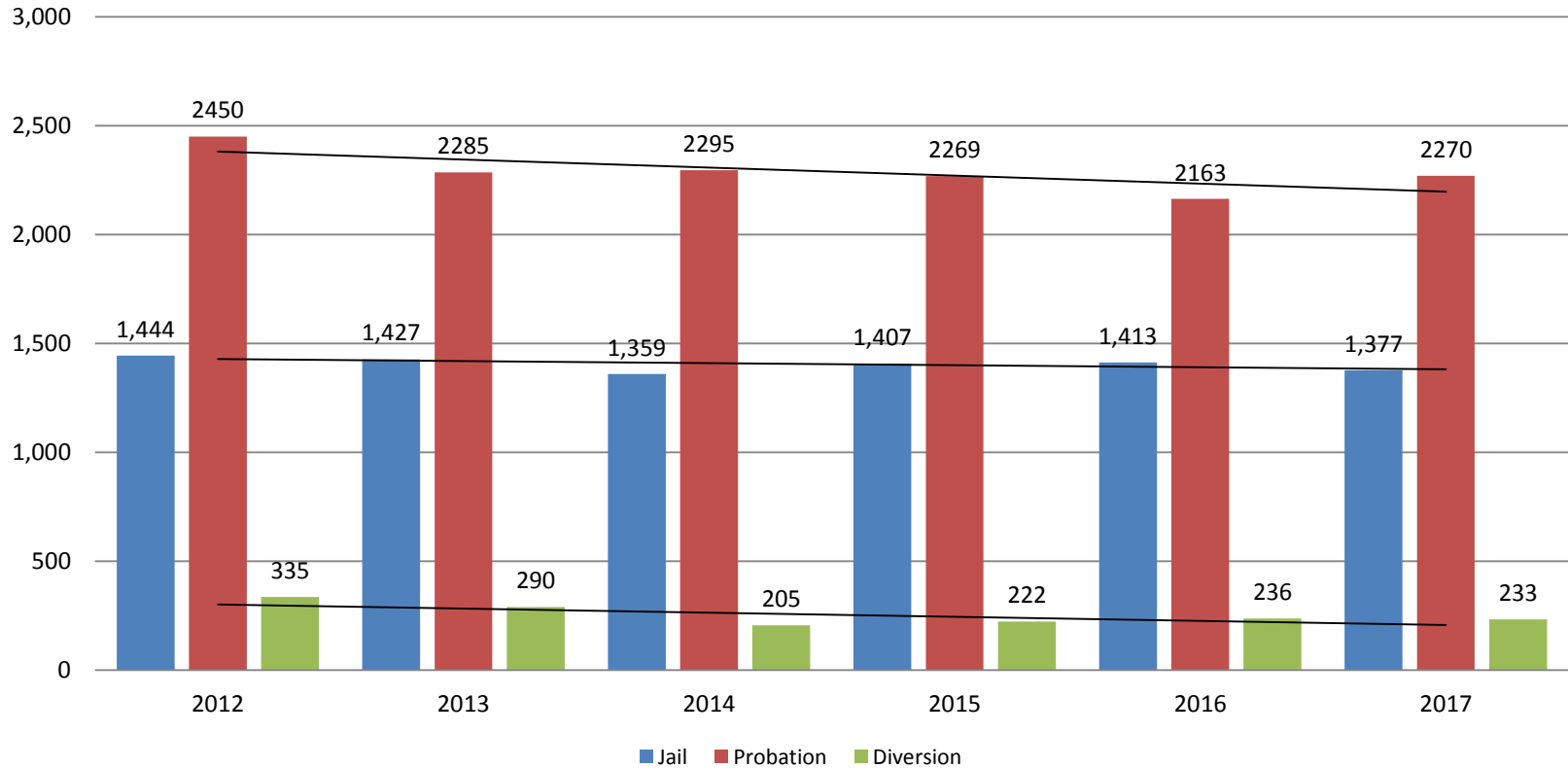
Jail includes individuals in booking, detention, work release and out-of county (combined)

(data obtained from detention facility, SG Dept. of Corrections, Pretrial Services, & CoW)



Correlation: Total & District Court Programs

Total Annual ADP: 2012 - Present

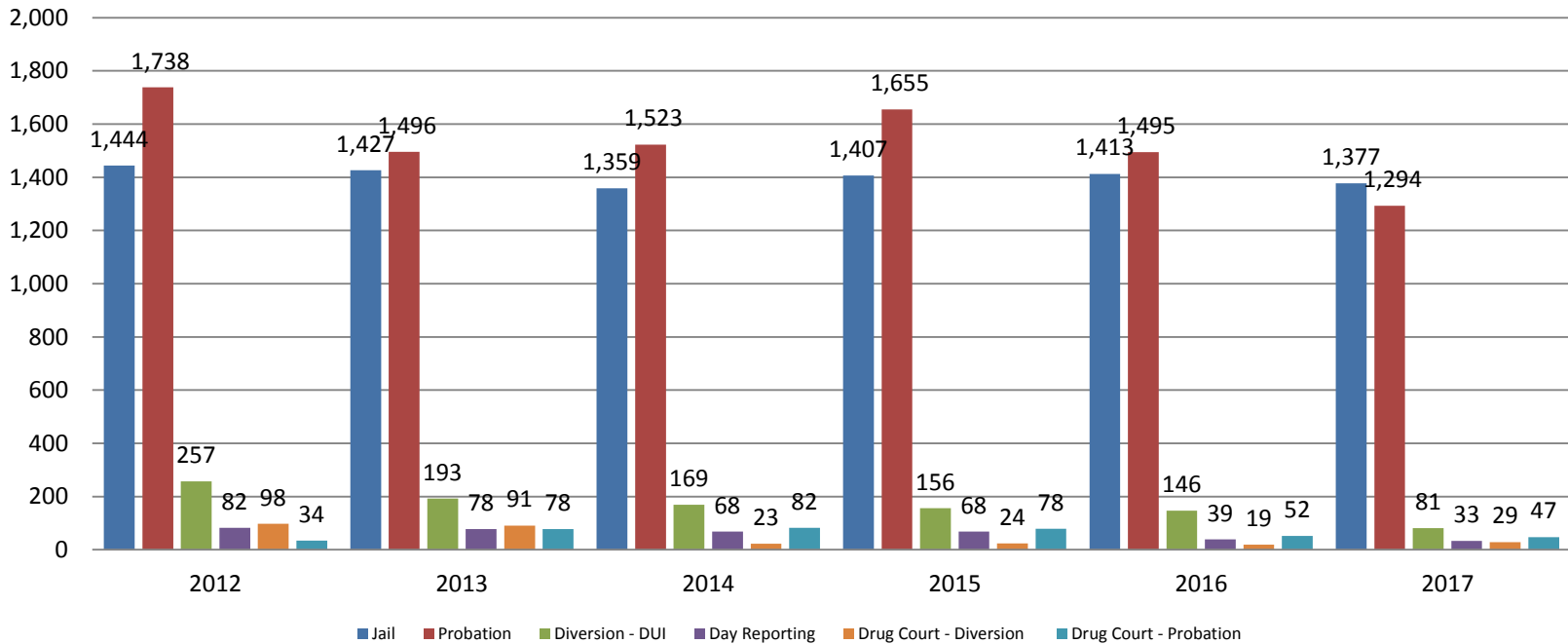


Jail includes individuals in booking, detention, work release and out-of county (combined)



Correlation: Total & City of Wichita / Municipal Court Programs

Total Annual ADP: 2012 - present

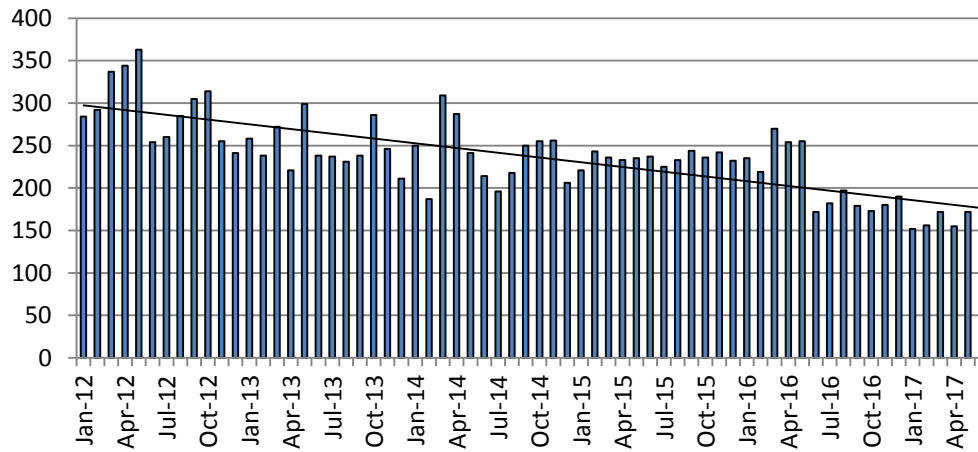


Jail includes individuals in booking, detention, work release and out-of county (combined)



Juvenile

JIAC Intakes: 2012 - present



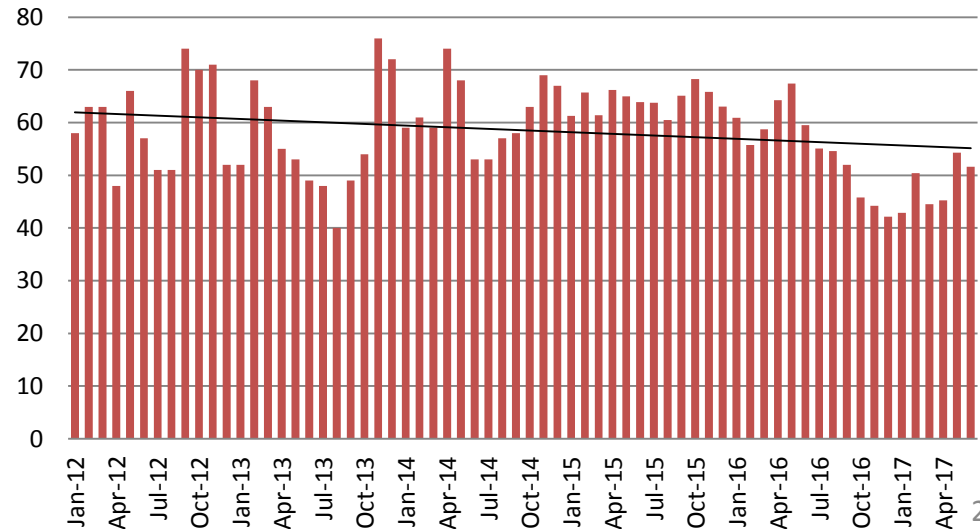
<u>June</u>	<u>June YTD Average</u>
2013 = 238	2013 = 254
2014 = 214	2014 = 248
2015 = 237	2015 = 234
2016 = 172	2016 = 234
2017 = 135	2017 = 157

(data obtained from SG CO Dept. of Corrections)

<u>June</u>	<u>June YTD Avg.</u>
2013 = 49	2013 = 57
2014 = 53	2014 = 62
2015 = 64	2015 = 64
2016 = 60	2016 = 61
2017 = 52	2017 = 48

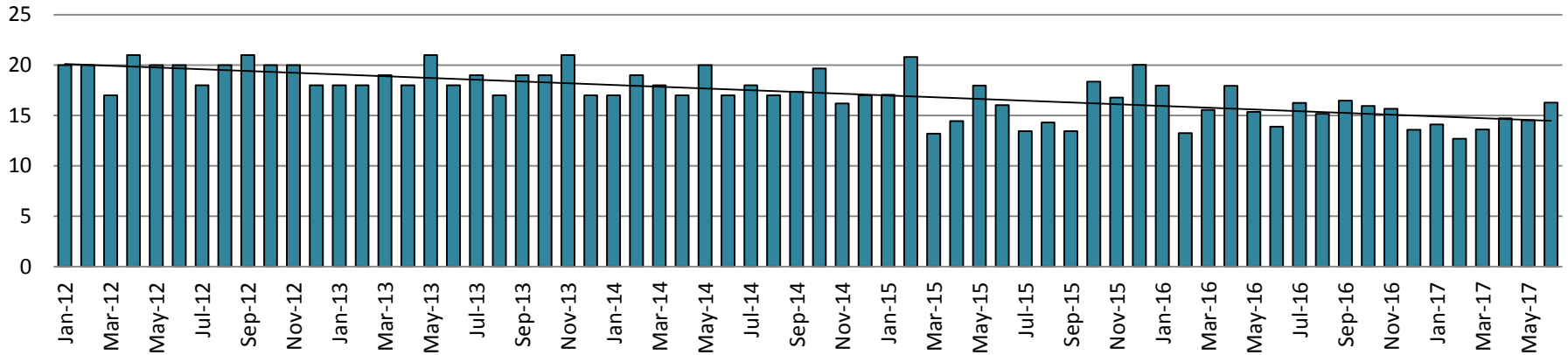
(data obtained from SG CO Dept. of Corrections)

JDF ADP: 2012 - present

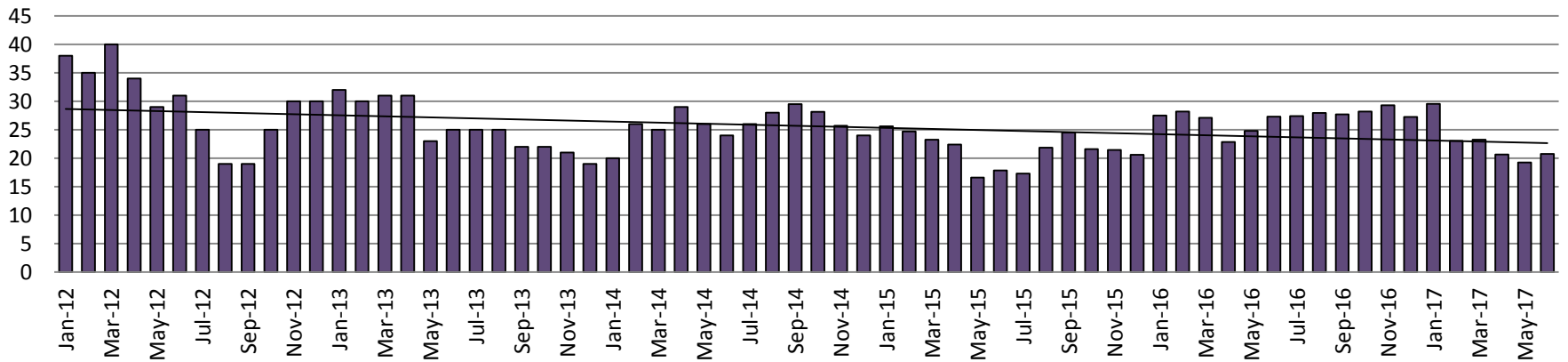


Juvenile Detention Alternatives

Juvenile Residential Facility (JRF) ADP: 2012 - present

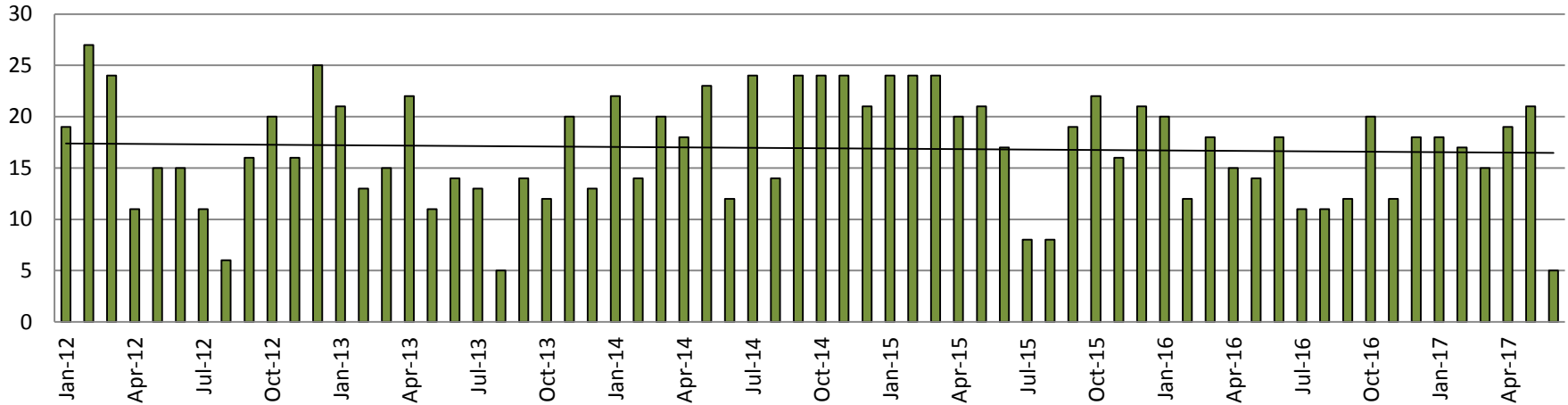


Home-Based Supervision ADP: 2012 - present

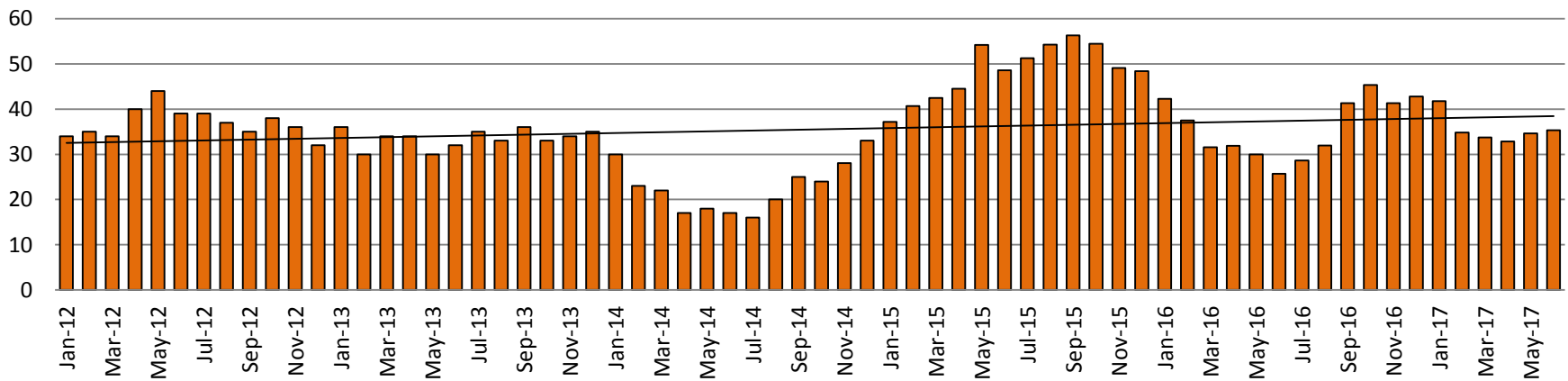


Juvenile Detention Alternatives

Weekend Alternative Detention Program 2012 - present



Detention Advocacy Case Management Services ADP: 2012 - present



Juvenile Detention Services

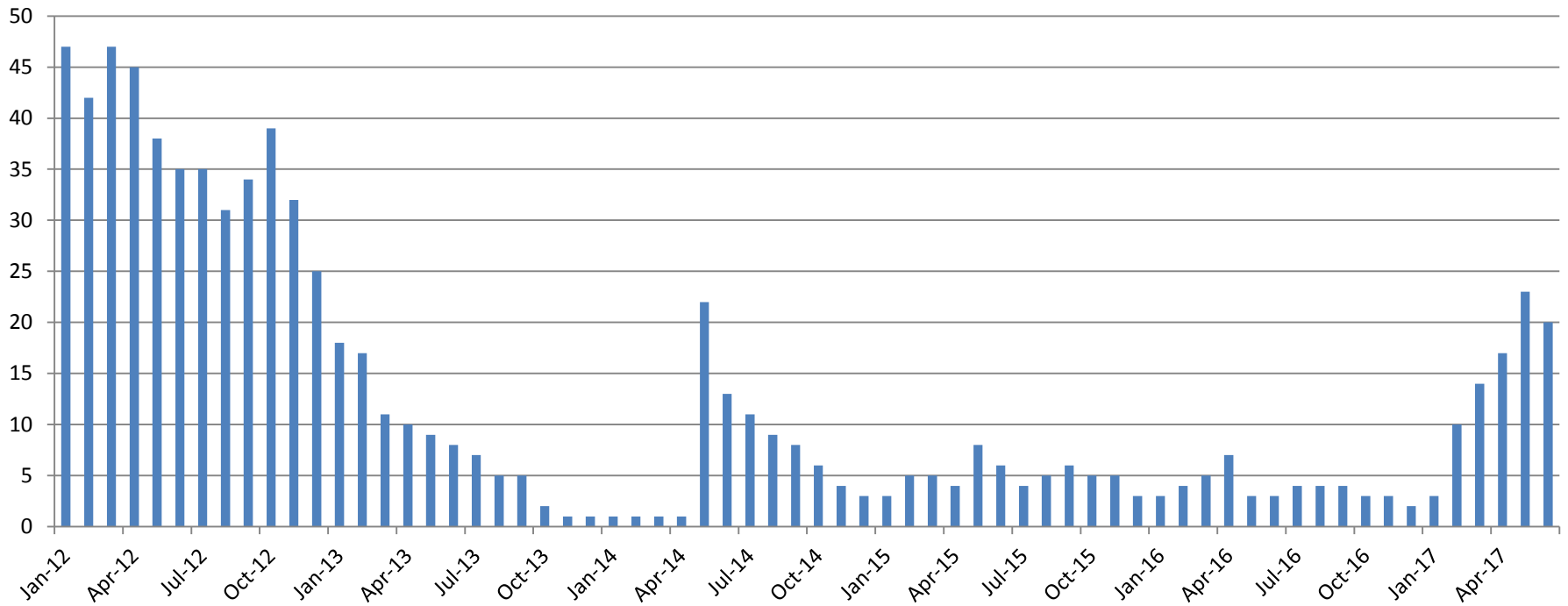
June ADP	2014	2015	2016	2017
Juvenile Detention Facility	53	64	60	52
Juvenile Residential Facility	17	16	14	16
Home Based Supervision	24	18	27	21
Detention Advocacy Case Management Services	17	49	26	35
Weekend Alternative Detention Program (total)	12	17	18	5

June YTD AVERAGE	2014	2015	2016	2017
Juvenile Detention Facility	62	64	61	48
Juvenile Residential Facility	18	17	16	14
Home Based Supervision	25	22	26	23
Detention Advocacy Case Management Services	21	45	33	36
Weekend Alternative Detention Program	18	22	16	16



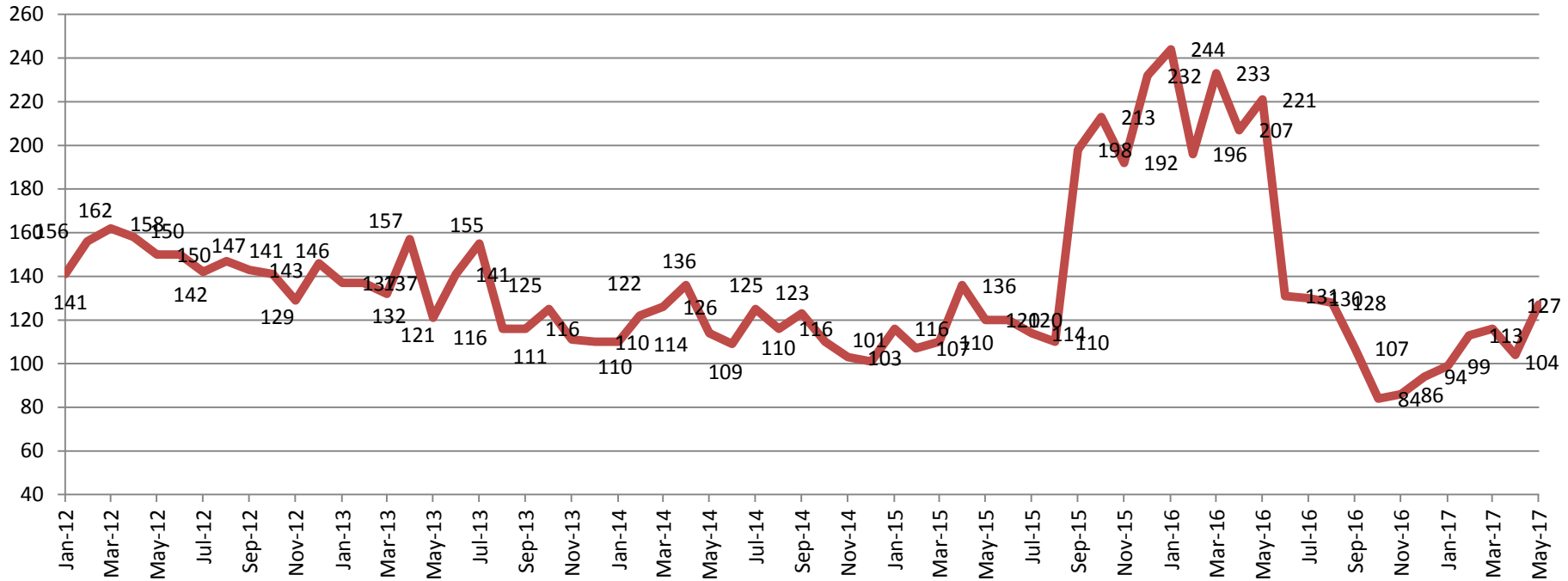
Monthly Jail Snapshot: June 30, 2017

BICE Holds 2012-Present



Monthly Jail Snapshot: June 30, 2017

Felony Commitments: February 2012 - present



June:

2012 = 150

2013 = 121

2014 = 114

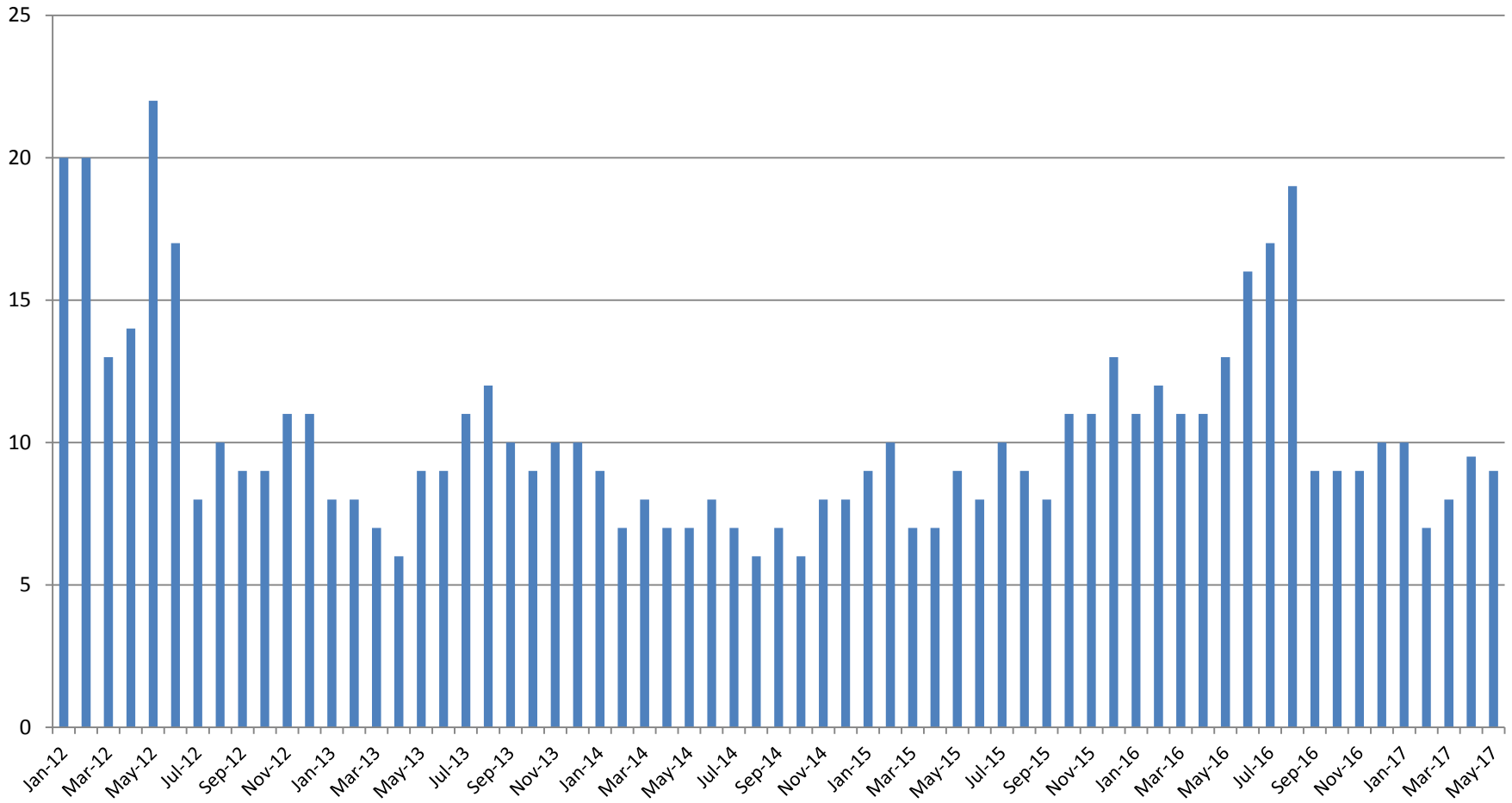
2015 = 120

2016 = 221

2017 = 127



Journal Entry Completion (Average Days) January 2013-Present



This data is always reported a month behind

