

# Criminal Justice Coordinating Council

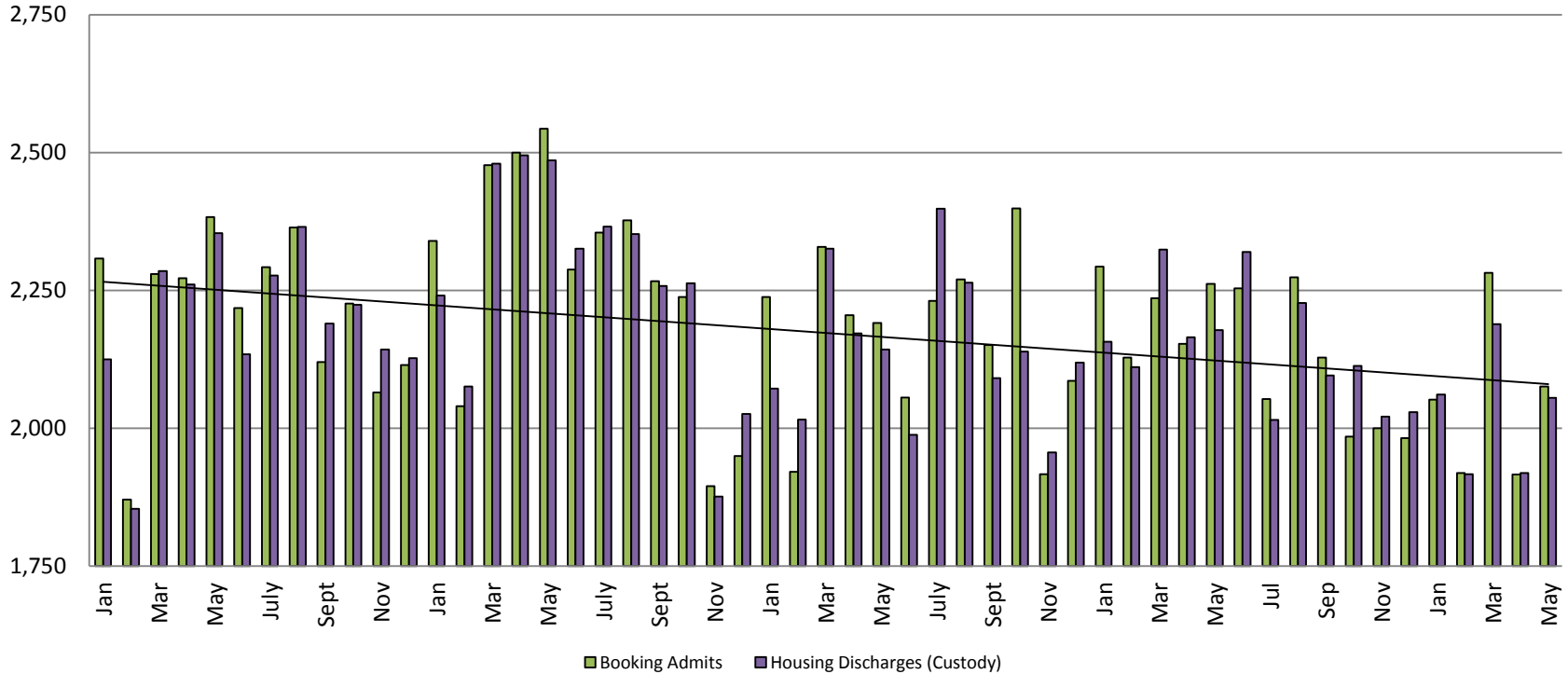
## Population Report & Program Trends

June 2017



# Detention Facility

## Booking Admits & Housing Discharges from Custody January 2013 - Present



### Housing Discharges for May

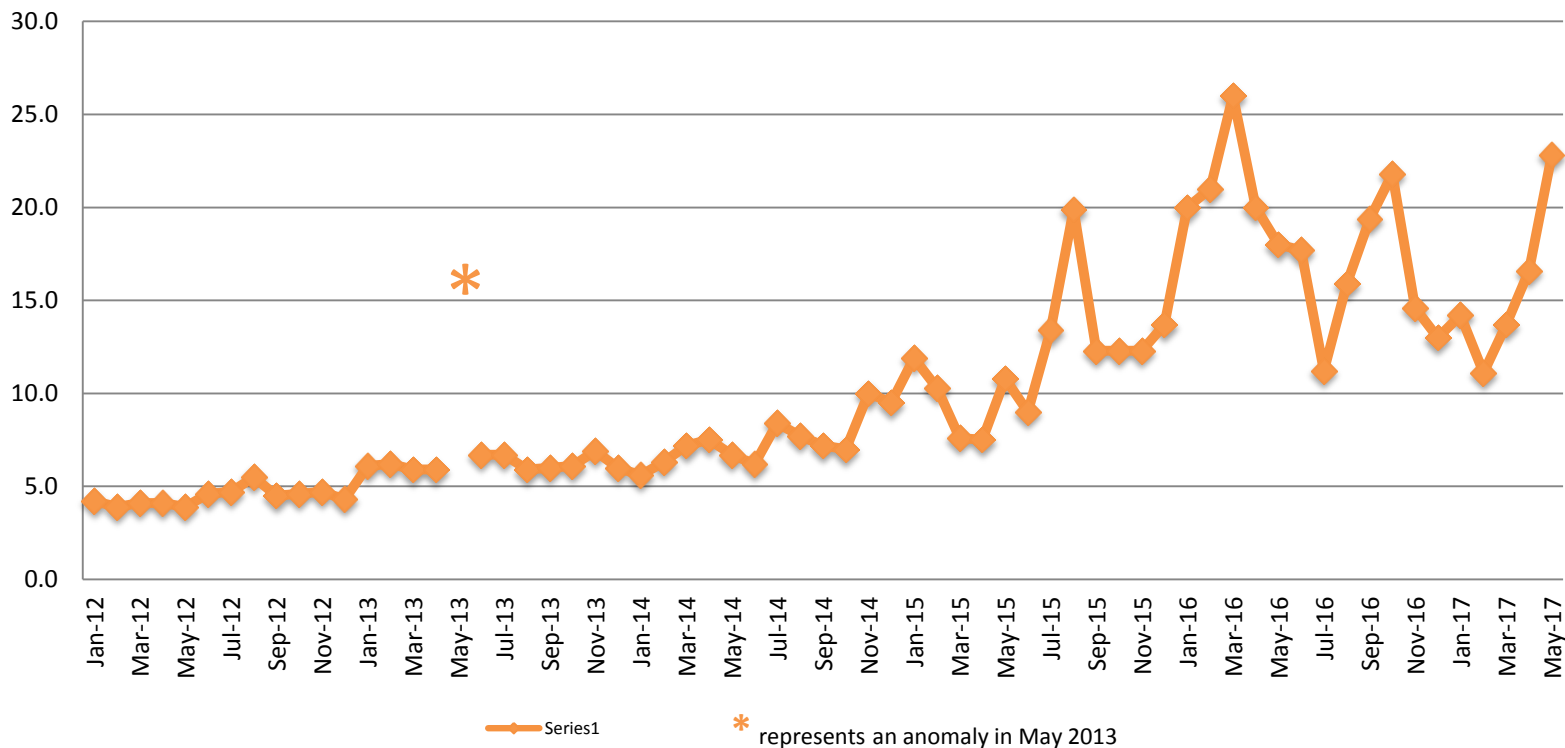
2015 = 2,143  
 2016 = 2,178  
 2017 = 2,055

### Bookings for May

2015 = 2,191  
 2016 = 2,262  
 2017 = 2,076



## Average Length of Stay: Booking (Hours) January 2012 - Present



### May

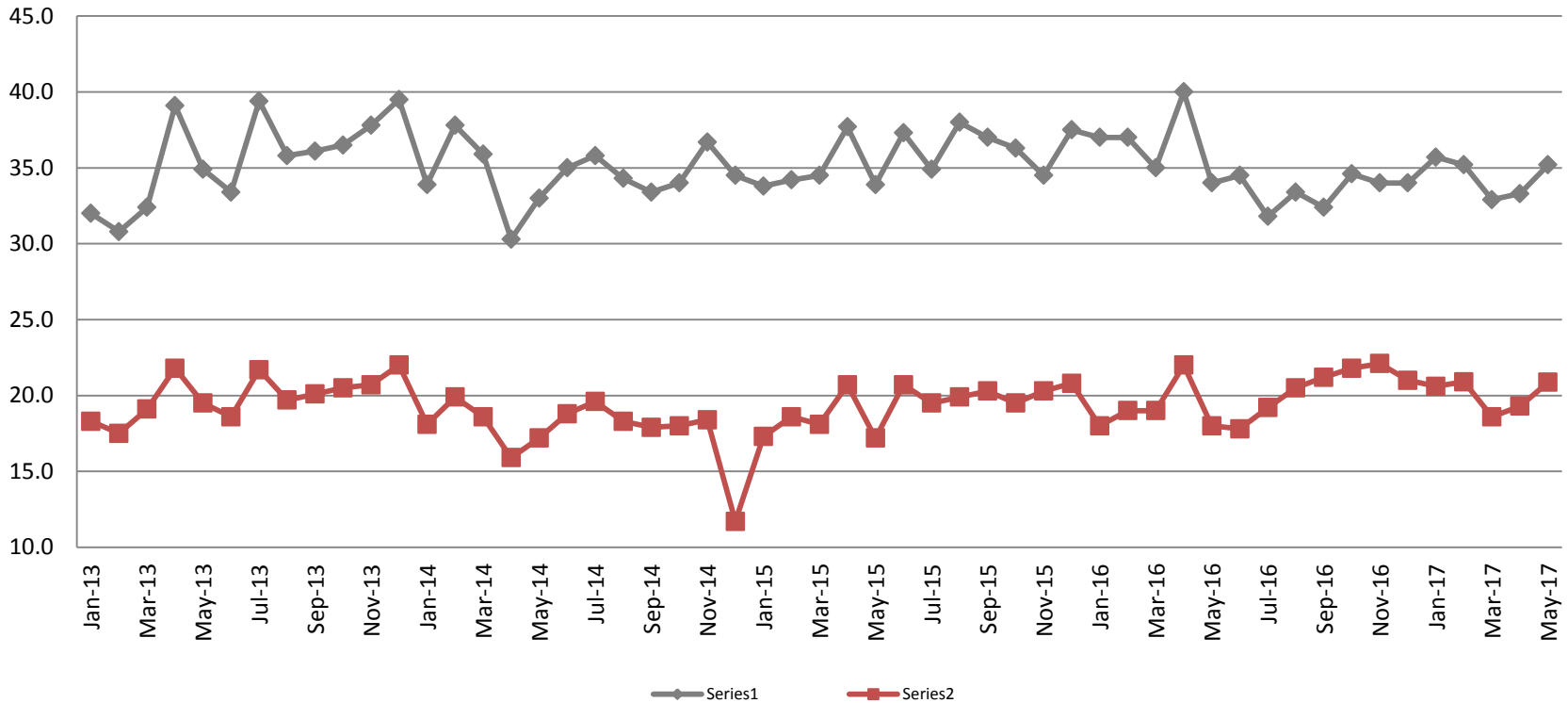
2012 = 3.9	2015 = 10.8
2013 = 16.2*	2016 = 18.0
2014 = 6.7	2017 = 22.8

### May YTD Avg.

2012 = 4.0	2015 = 9.6
2013 = 8.1	2016 = 21.0
2014 = 6.7	2017 = 15.7



## Average Length of Stay: Housing & Combined (Days) January 2013 - Present



### May Housing

2013 = 34.9  
 2014 = 33.0  
 2015 = 33.9  
 2016 = 34.0  
 2017 = 35.2

### May Housing YTD Avg.

2013 = 33.8  
 2014 = 34.2  
 2015 = 34.8  
 2016 = 36.6  
 2017 = 34.5

### May Combined

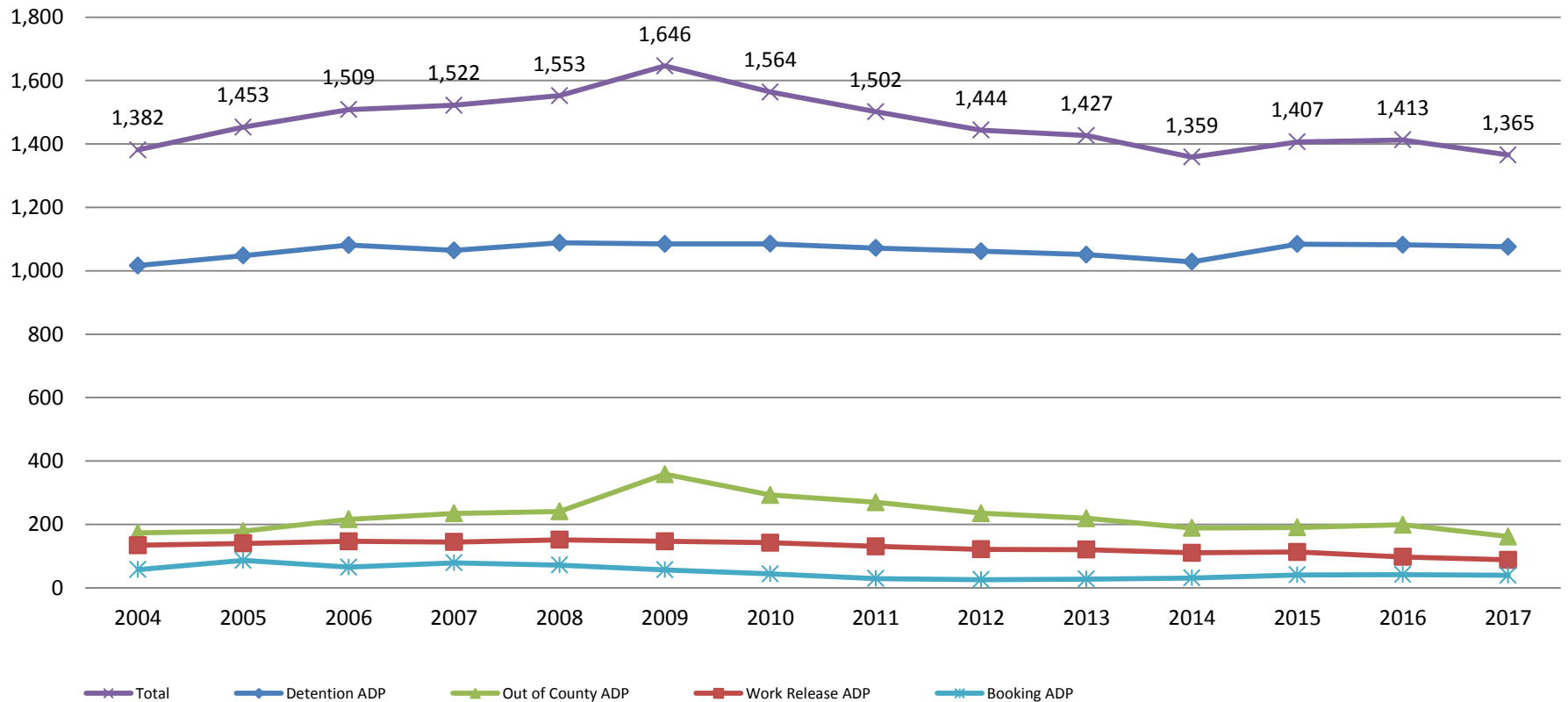
2013 = 19.5  
 2014 = 17.2  
 2015 = 17.2  
 2016 = 18.0  
 2017 = 20.9

### May Combined YTD Avg.

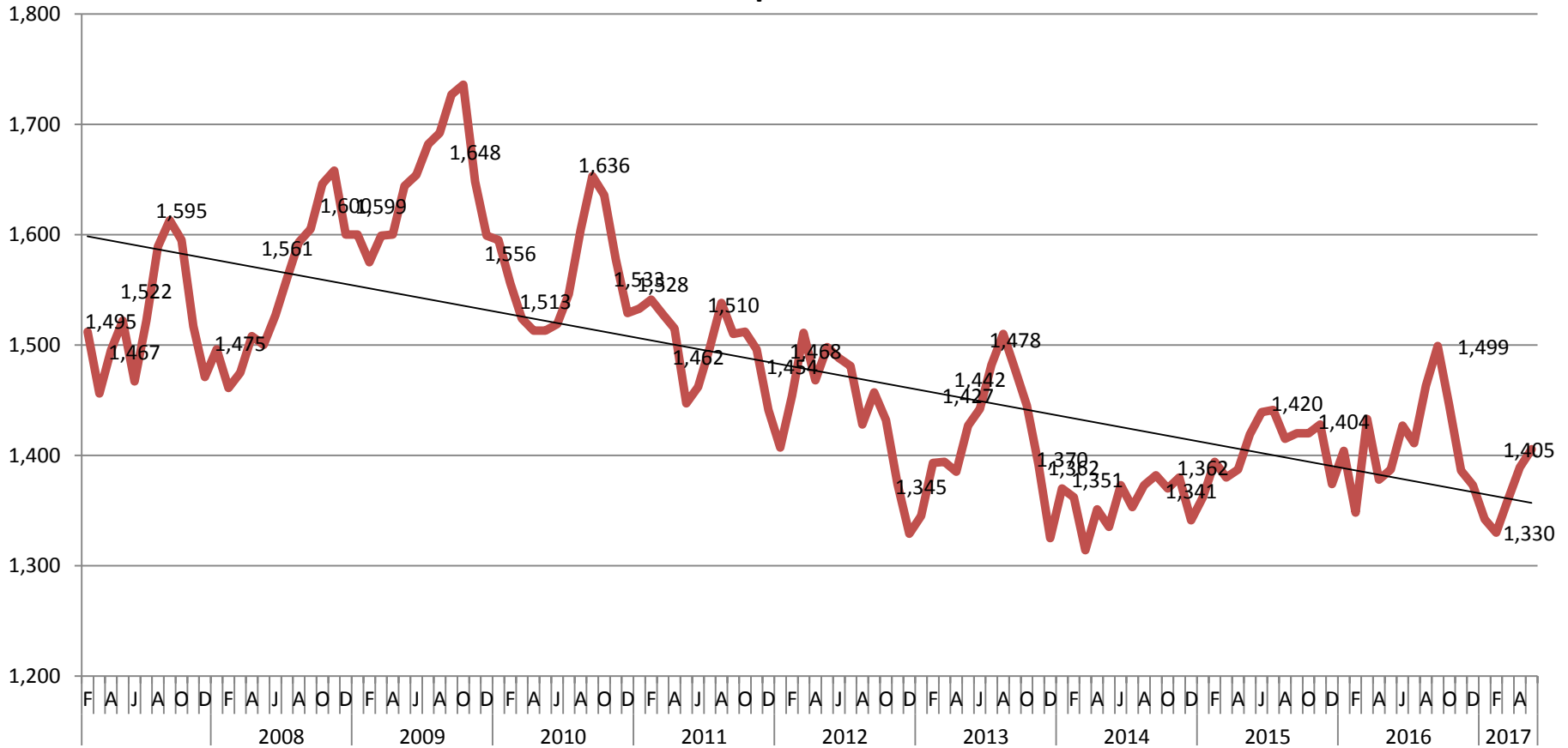
2013 = 19.2  
 2014 = 17.9  
 2015 = 18.4  
 2016 = 19.2  
 2017 = 20.1

# Jail: Annual Average Daily Population (ADP)

## TRENDS: Booking, Detention, Work Release, & Out of County Annual ADP: 2004 - present



## TOTAL MONTHLY ADP: JAIL (Booking, Detention Facility, Work Release, & Out of County) 2007 - present



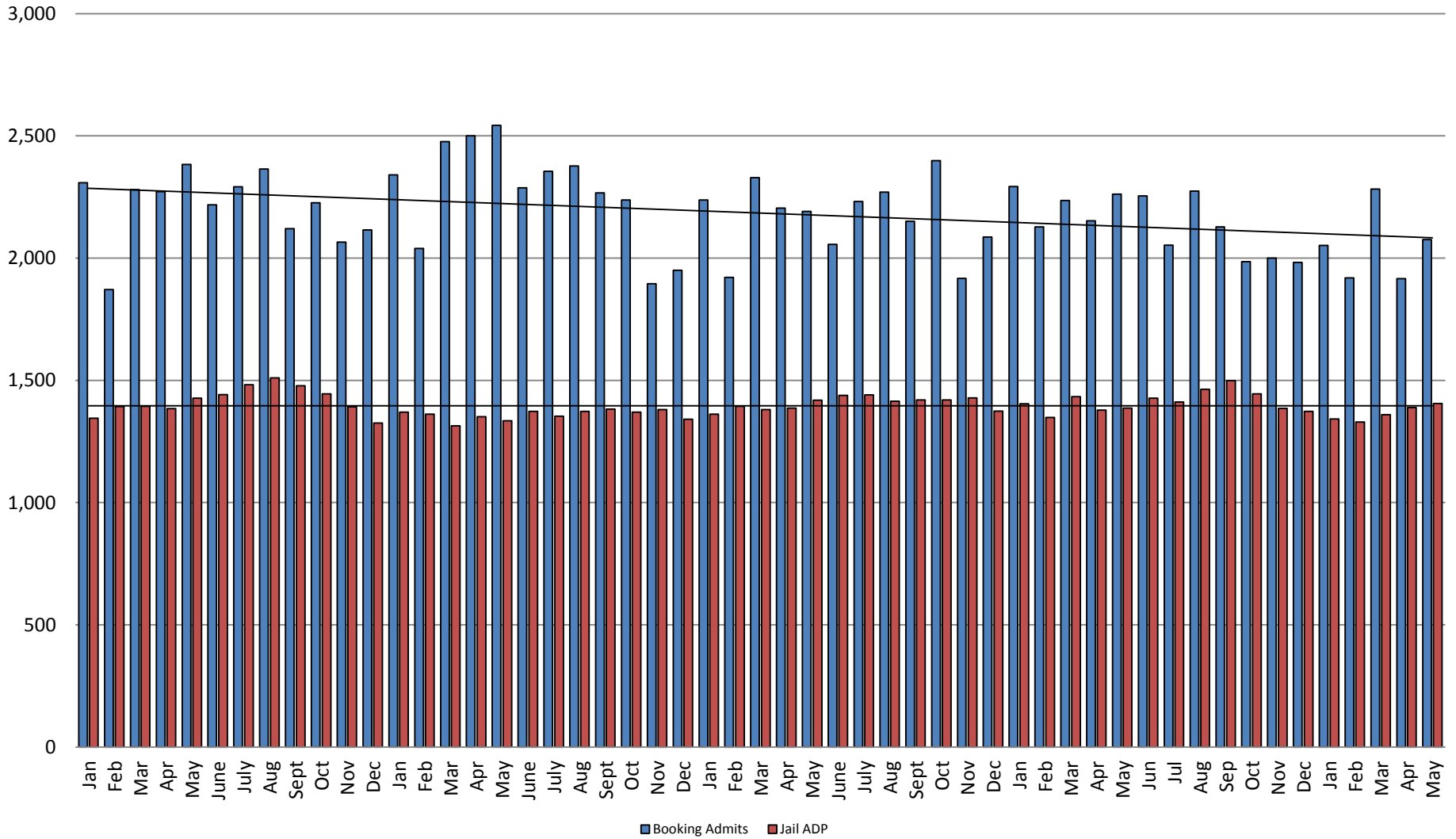
This slide shows total monthly ADP for individuals in booking, detention, work release and out-of county (combined)



Sedgwick County...  
working for you

(data obtained from detention facility)

# Booking Admits & Total Monthly ADP (Jail): 2013 - present



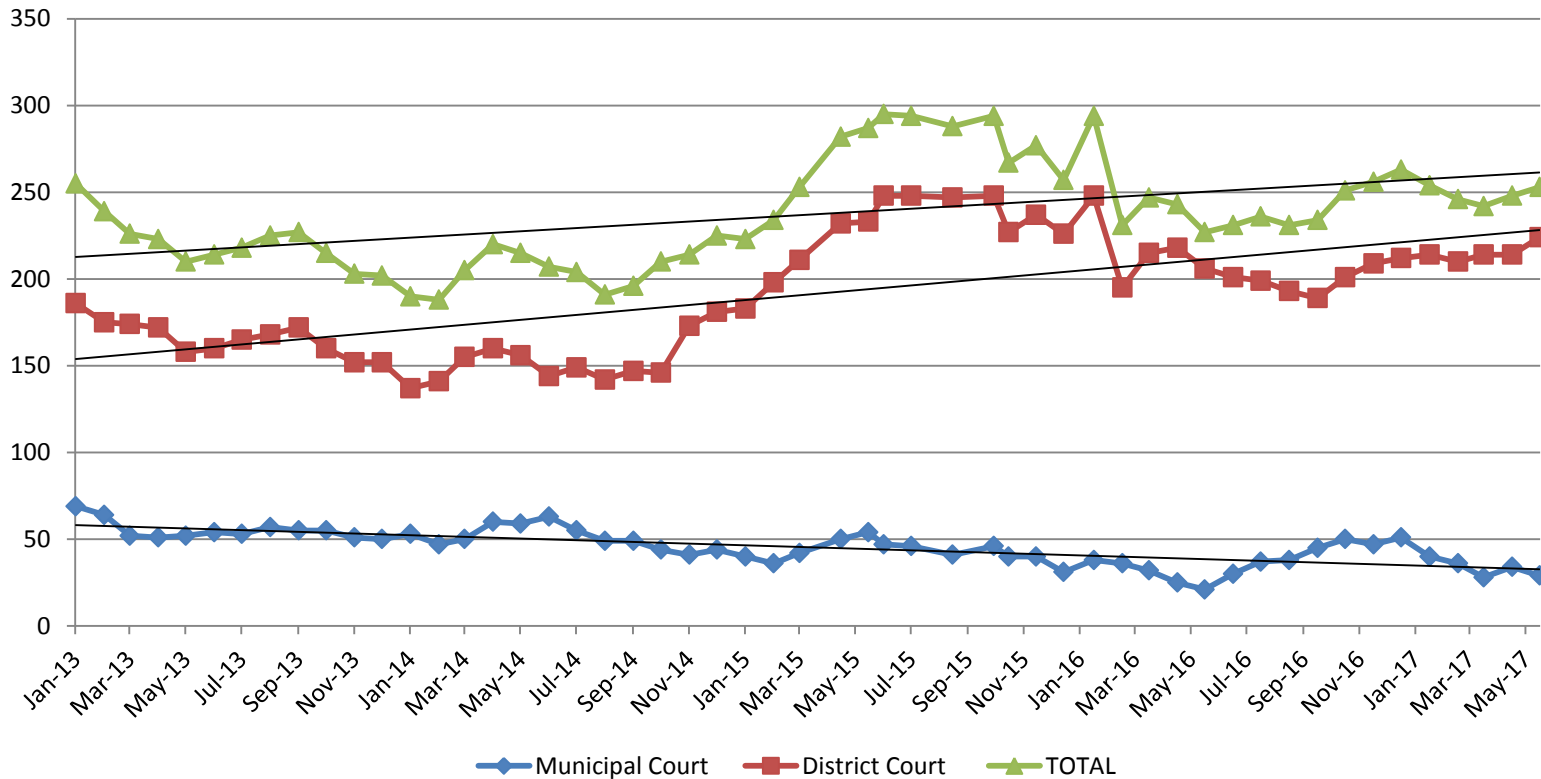
Jail includes individuals in booking, detention, work release and out-of county (combined)

(data obtained from detention facility)



Sedgwick County...  
working for you

## Pretrial Services Program (PSP) Monthly ADP: January 2013 - Present

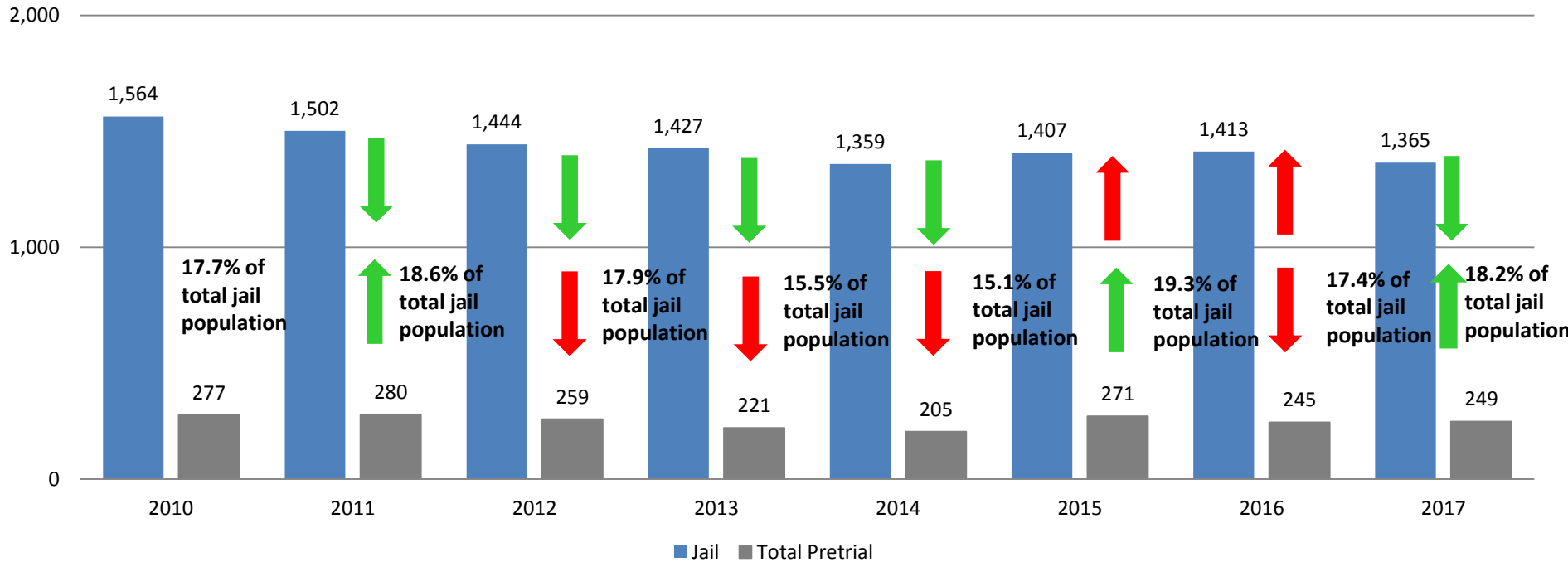


<b>May</b>	<b>2013</b>	<b>2014</b>	<b>2015</b>	<b>2016</b>	<b>2017</b>	<b>May YTD Avg.</b>	<b>2013</b>	<b>2014</b>	<b>2015</b>	<b>2016</b>	<b>2017</b>
Municipal Court	52	59	54	21	29	Municipal Court	58	54	44	30	33
District Court	158	156	233	206	224	District Court	173	150	233	216	215
<b>TOTAL</b>	<b>210</b>	<b>215</b>	<b>287</b>	<b>227</b>	<b>253</b>	<b>TOTAL</b>	<b>231</b>	<b>204</b>	<b>256</b>	<b>248</b>	<b>249</b>



# Correlation: Total & PSP

## Total Annual ADP: 2010 - Present

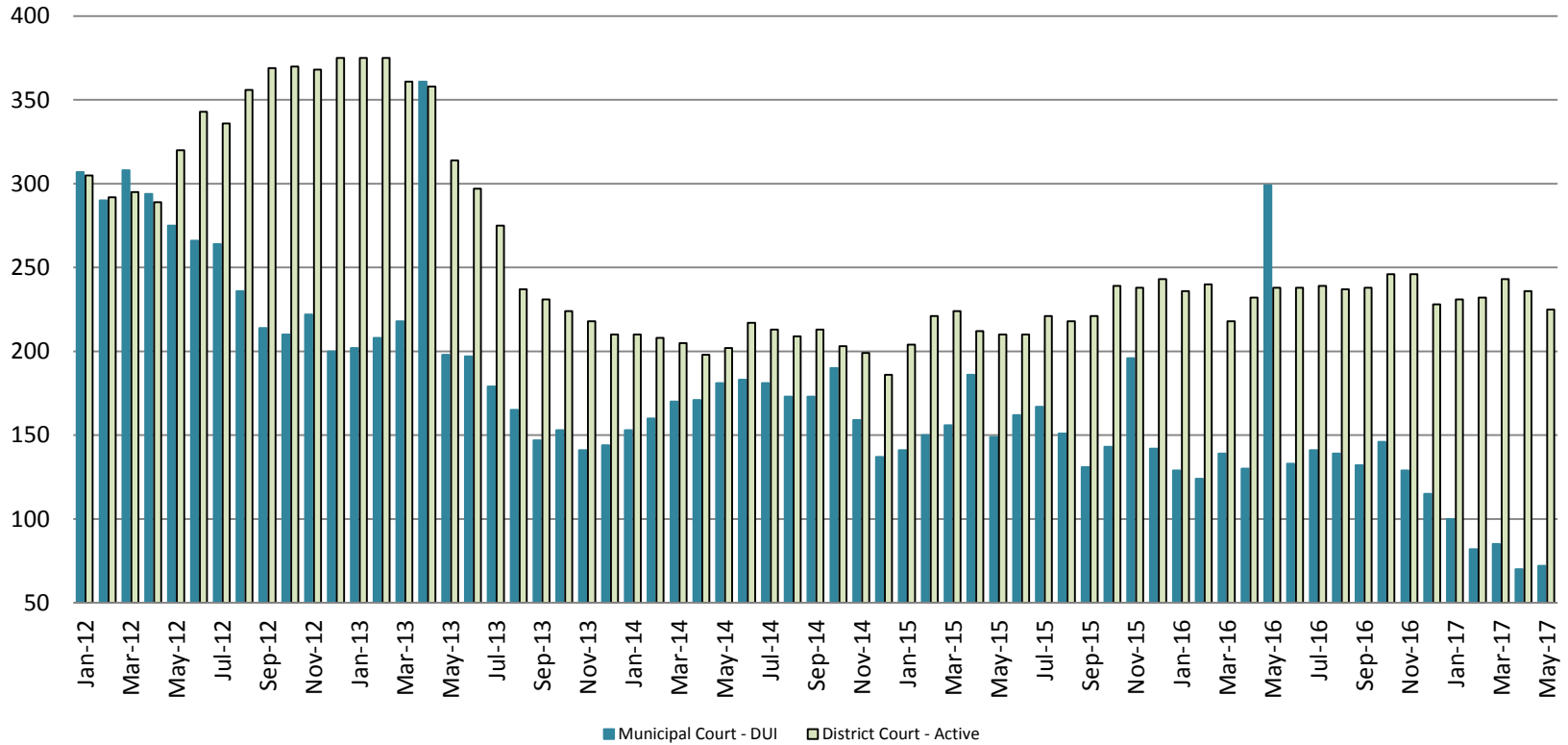


Arrows represent the overall increase/decrease of the population from year to year

Jail includes individuals in booking, detention, work release and out-of county (combined)

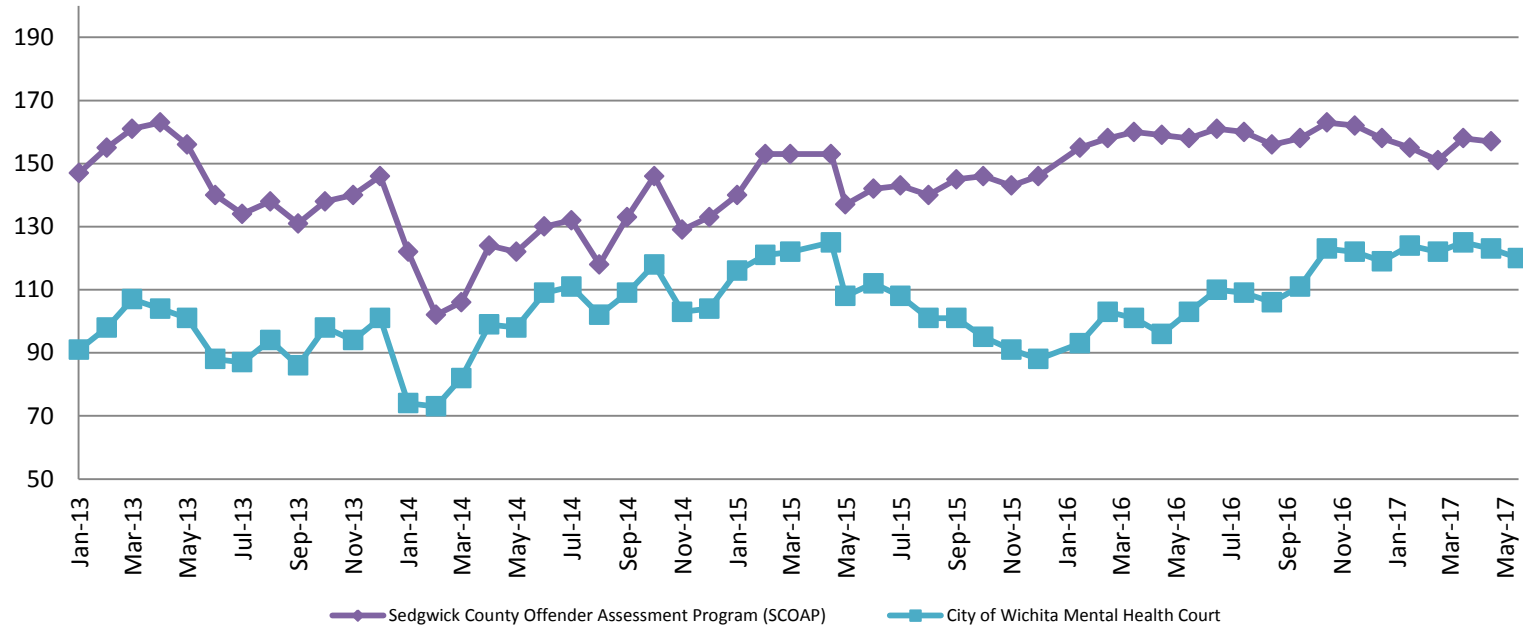


## Diversion - Active Caseload January 2012 - Present



<u>May</u>	<u>2013</u>	<u>2014</u>	<u>2015</u>	<u>2016</u>	<u>2017</u>	<u>May YTD Avg.</u>	<u>2013</u>	<u>2014</u>	<u>2015</u>	<u>2016</u>	<u>2017</u>
Municipal Court- DUI	198	181	149	299	72	Municipal Court	237	167	156	164	82
District Court- Active	314	202	210	238	225	District Court	357	205	214	233	233

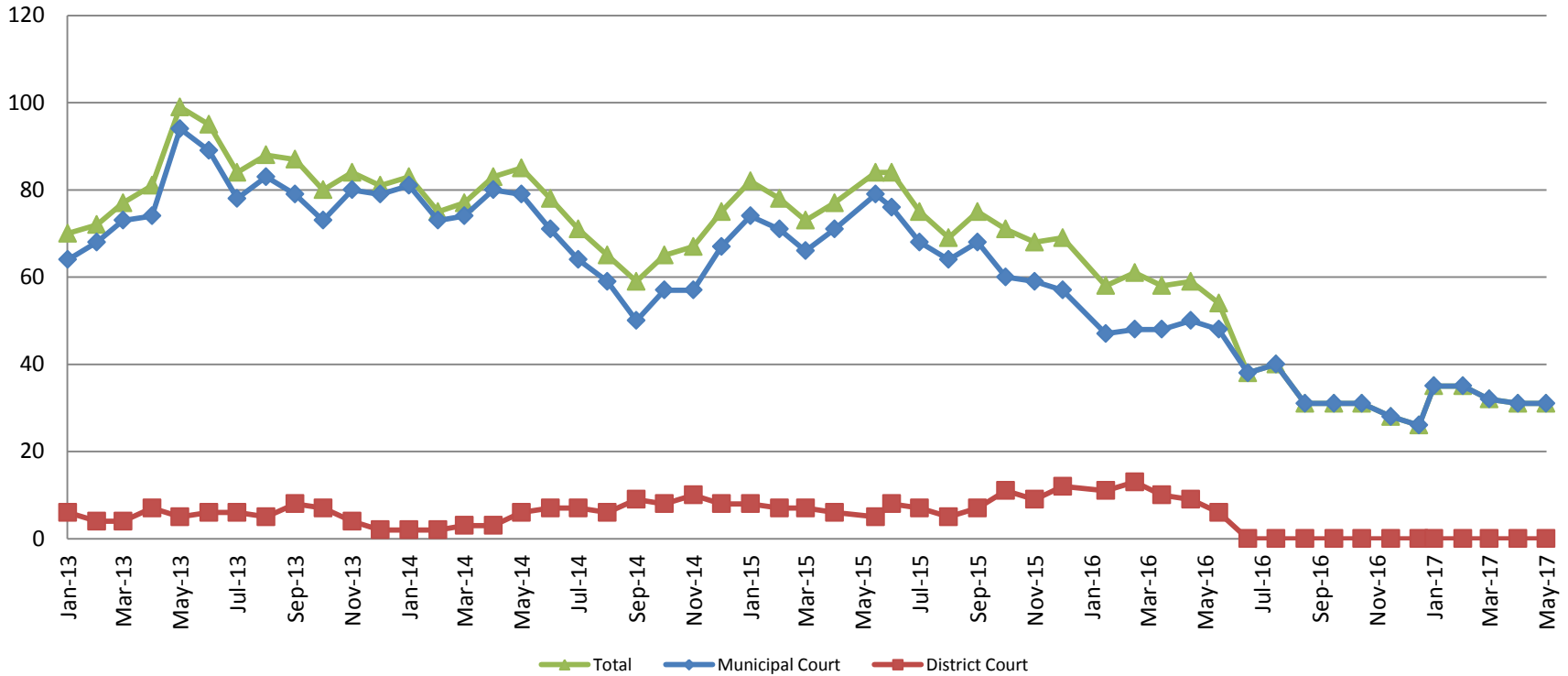
## Mental Health - ADP 2013 - present



<b>May:</b>	<b>2013</b>	<b>2014</b>	<b>2015</b>	<b>2016</b>	<b>2017</b>
SCOAP	156	122	137	158	154
CoW – MH Court	101	98	108	103	120
<b>May YTD Avg.</b>	<b>2013</b>	<b>2014</b>	<b>2015</b>	<b>2016</b>	<b>2017</b>
SCOAP	156	115	147	158	155
CoW – MH Court	100	85	118	99	123

(data obtained from COMCARE)

# Day Reporting - Active Caseload 2013-present

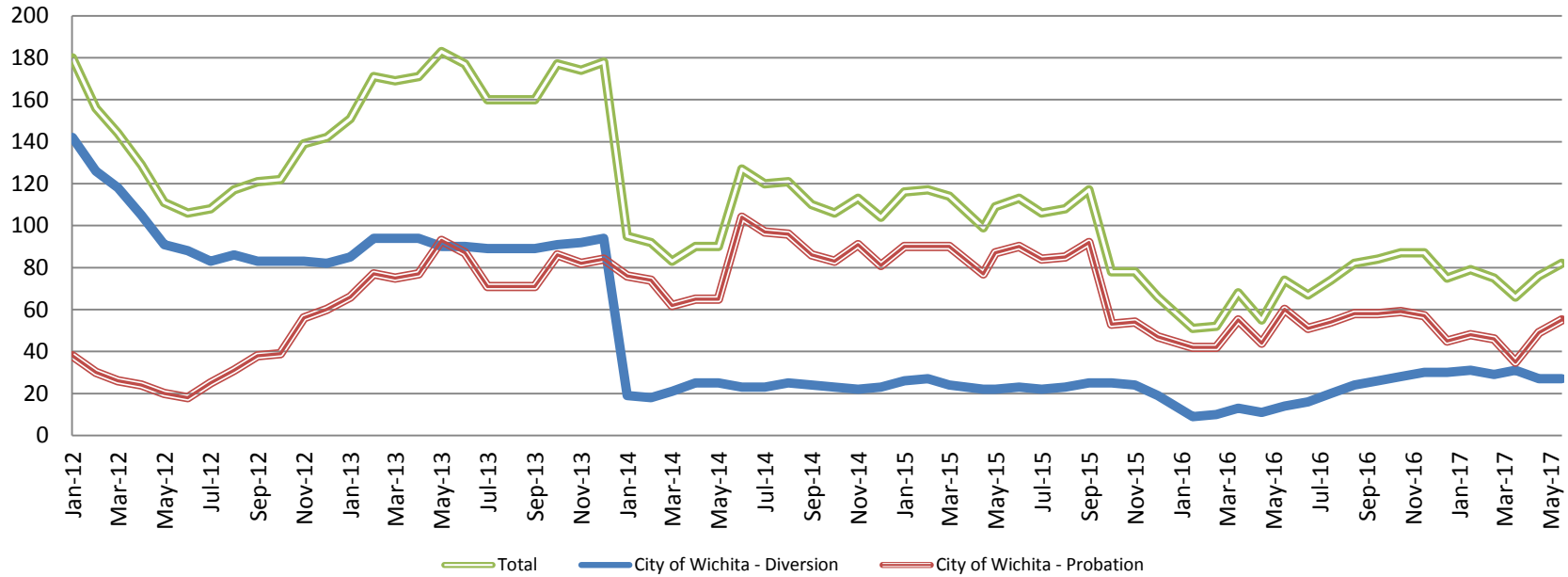


<b>May</b>	<b>2013</b>	<b>2014</b>	<b>2015</b>	<b>2016</b>	<b>2017</b>
Municipal Court	94	79	79	48	31
District Court	5	6	5	6	0*
<b>TOTAL</b>	<b>99</b>	<b>85</b>	<b>84</b>	<b>54</b>	<b>33</b>
<b>May YTD Avg.</b>	<b>2013</b>	<b>2014</b>	<b>2015</b>	<b>2016</b>	<b>2017</b>
Municipal Court	75	77	72	48	31
District Court	5	3	7	10	0*
<b>TOTAL</b>	<b>80</b>	<b>81</b>	<b>79</b>	<b>58</b>	<b>33</b>



# Drug Court - City of Wichita

## ADP: 2012 - present



**May- CoW Diversion**

2013 = 90  
 2014 = 25  
 2015 = 22  
 2016 = 14  
 2017 = 27

**May YTD Avg.**

2013 = 91  
 2014 = 22  
 2015 = 24  
 2016 = 11  
 2017 = 29

**May- CoW Probation**

2013 = 93  
 2014 = 65  
 2015 = 87  
 2016 = 60  
 2017 = 55

**May YTD Avg.**

2013 = 78  
 2014 = 68  
 2015 = 87  
 2016 = 49  
 2017 = 47

**May- CoW Total**

2013 = 183  
 2014 = 90  
 2015 = 109  
 2016 = 74  
 2017 = 82

**May YTD Avg.**

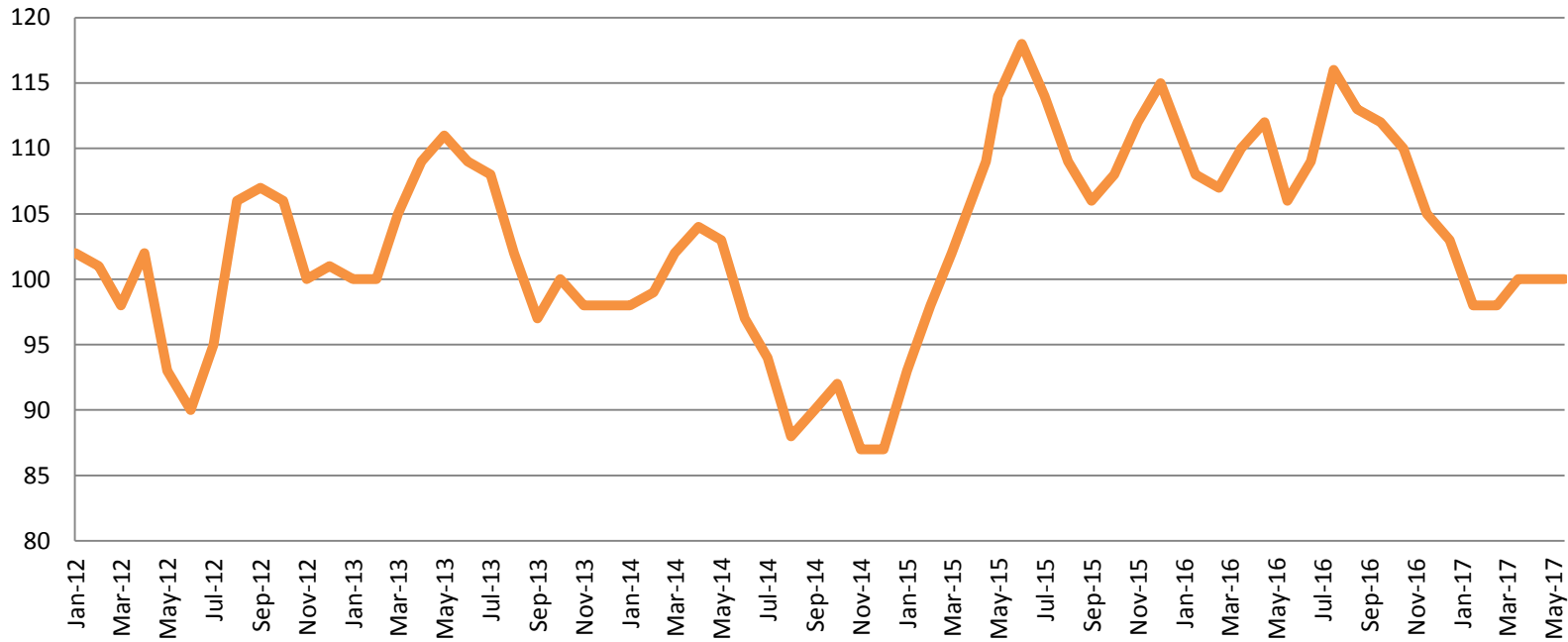
2013 = 169  
 2014 = 90  
 2015 = 111  
 2016 = 60  
 2017 = 76

(data obtained from CoW)



Sedgwick County...  
 working for you

## Drug Court - Sedgwick County ADP: 2012 - present



### May- SG CO

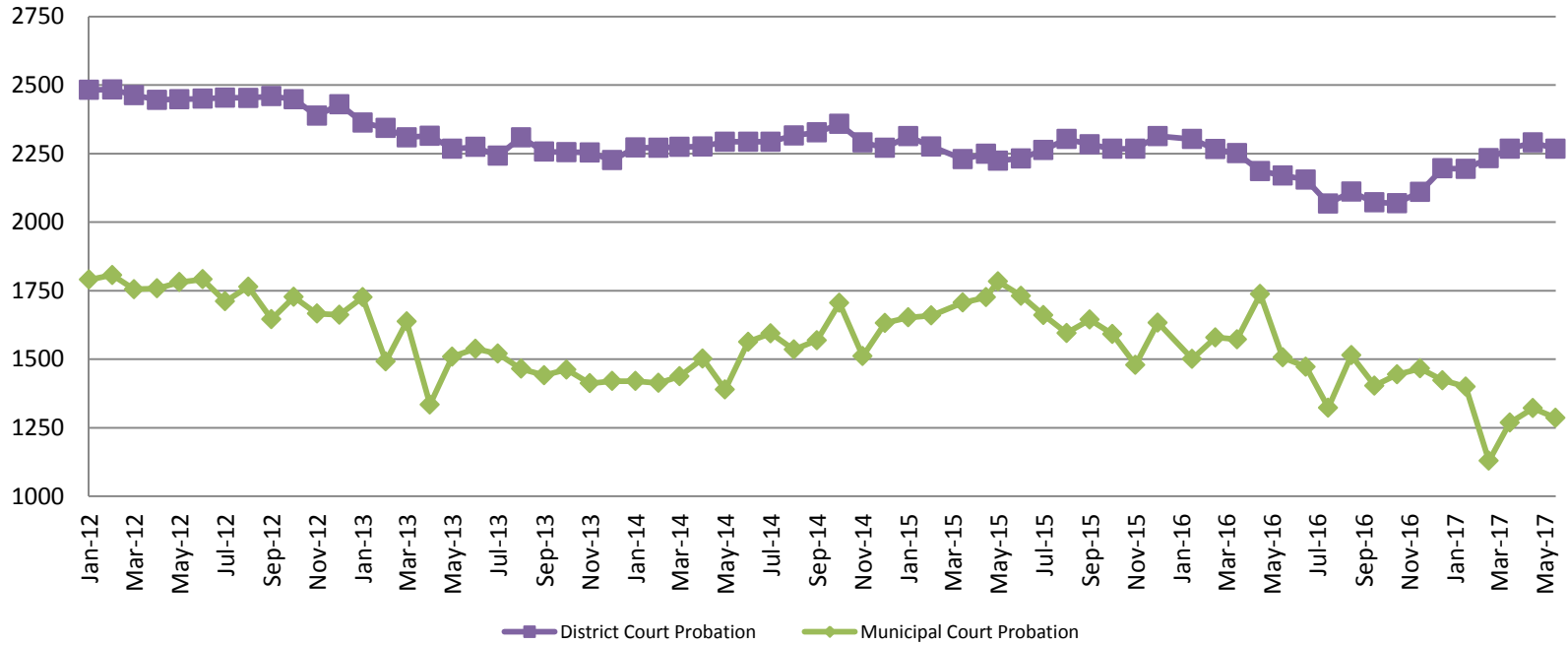
**2013 = 111**  
**2014 = 103**  
**2015 = 114**  
**2016 = 106**  
**2017 = 100**

### May YTD Avg.

**2013 = 105**  
**2014 = 101**  
**2015 = 103**  
**2016 = 109**  
**2017 = 99**



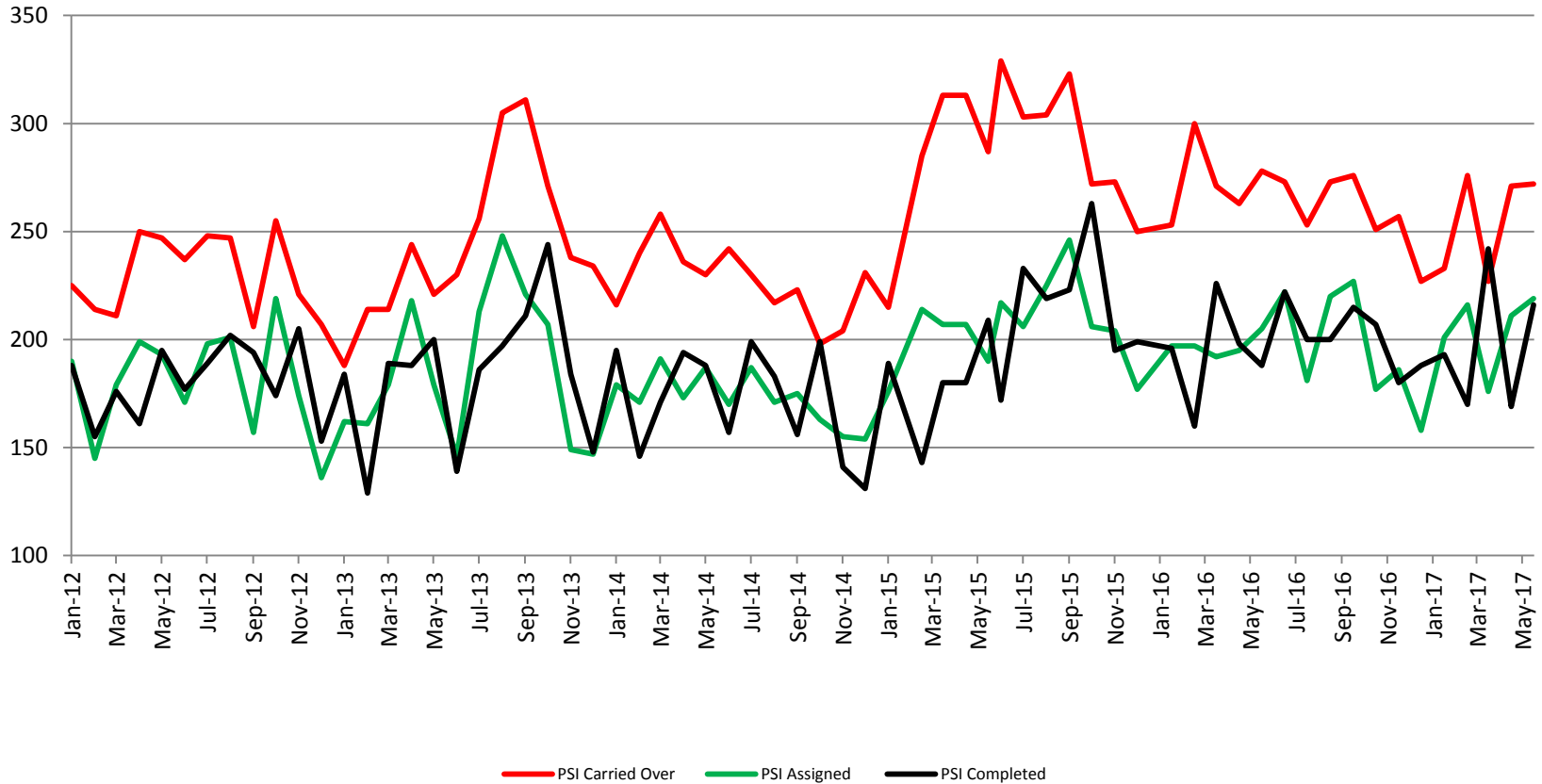
## Probation - Active Caseloads 2012 - present



<b>May</b>	<b>2013</b>	<b>2014</b>	<b>2015</b>	<b>2016</b>	<b>2017</b>
District Court	2,267	2,293	2,224	2,170	2,267
Municipal Court	1,509	1,389	1,784	1,506	1,286
<b>May YTD Avg.</b>	<b>2013</b>	<b>2014</b>	<b>2015</b>	<b>2016</b>	<b>2017</b>
District Court	2,319	2,277	2,258	2,235	2,250
Municipal Court	1,540	1,432	1,705	1,579	1,281



## District Court Probation: Pre-Sentence Investigation 2012 - present

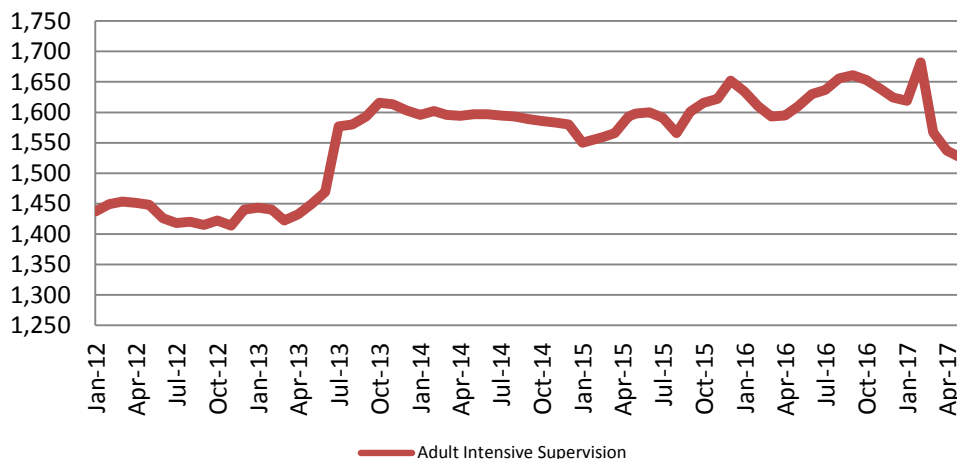


(data obtained from District Court)



# Community Corrections

## Adult Intensive Supervision Probation (AISP) ADP 2012 - present



<u>May</u>	<u>May YTD Avg.</u>
2013 = 1,449	2013 = 1,437
2014 = 1,597	2014 = 1,597
2015 = 1,598	2015 = 1,573
2016 = 1,610	2016 = 1,608
2017 = 1,526	2017 = 1,586

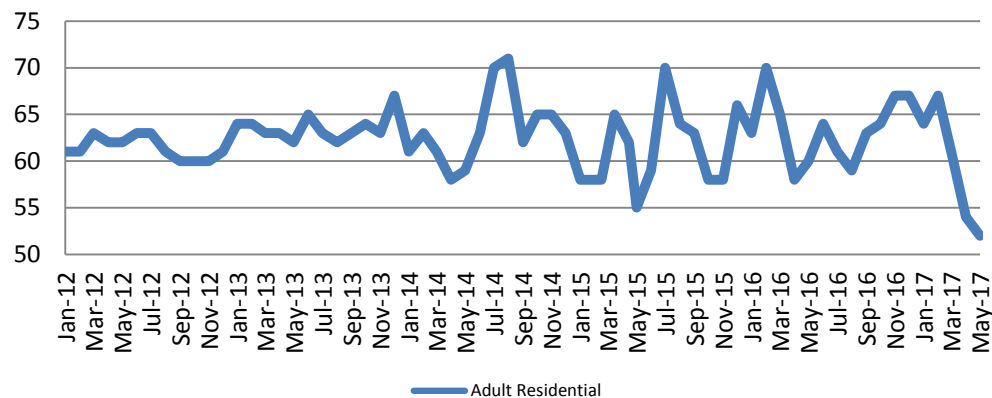
(data obtained from SG CO Dept. of Corrections)

\*KDOC changed population count to include drug court, residential and AISP beginning July 2013.

<u>May</u>	<u>May YTD Avg.</u>
2013 = 62	2013 = 63
2014 = 59	2014 = 60
2015 = 55	2015 = 60
2016 = 60	2016 = 63
2017 = 52	2017 = 60

(data obtained from SG CO Dept. of Corrections)

## Adult Residential: ADP 2012 - present

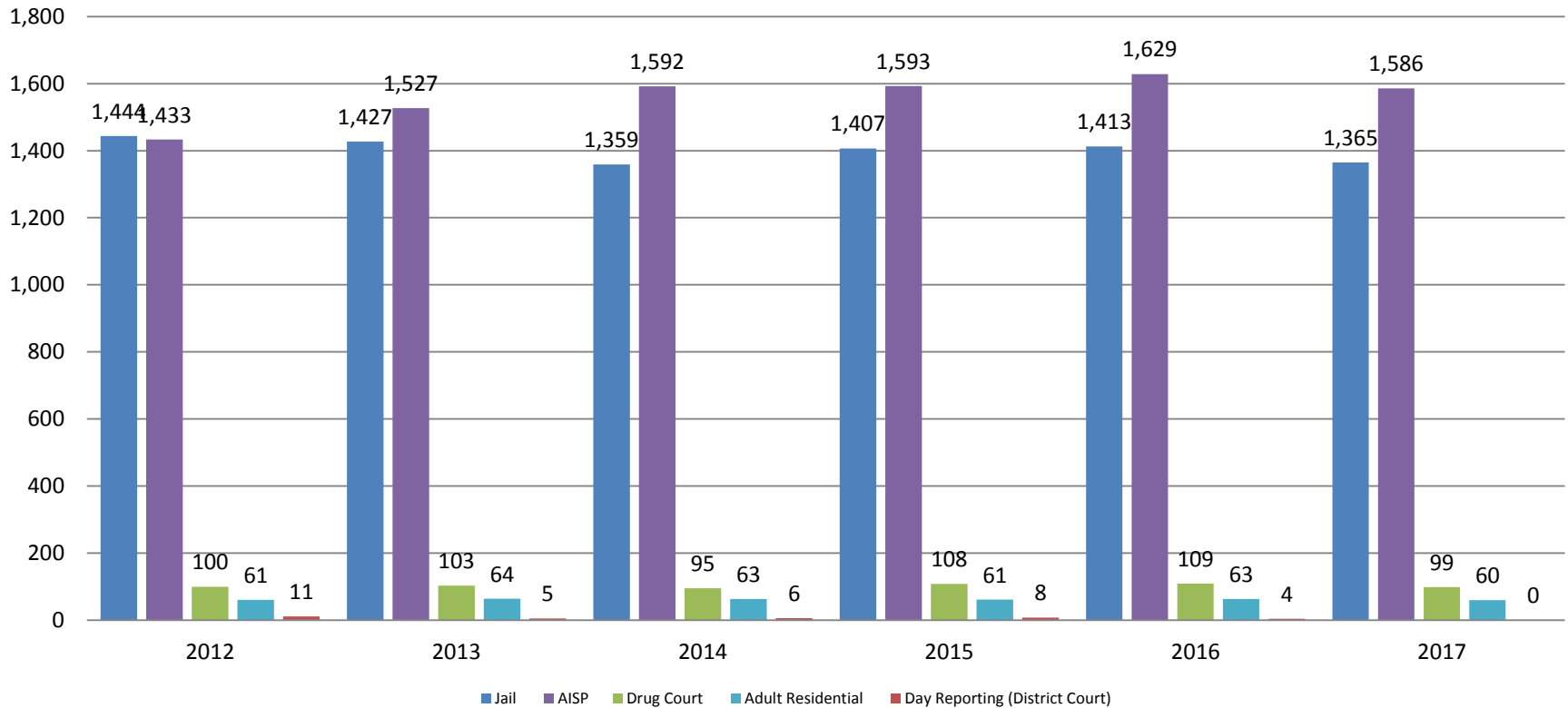


— Adult Residential



# Correlation: Total & Sedgwick County Programs (Adult)

## Total Annual ADP: 2012 - Present



Jail includes individuals in booking, detention, work release and out-of county (combined)

(data obtained from detention facility, SG Dept. of Corrections, Pretrial Services, & CoW)

# Correlation: Total & District Court Programs

## Total Annual ADP: 2012 - Present

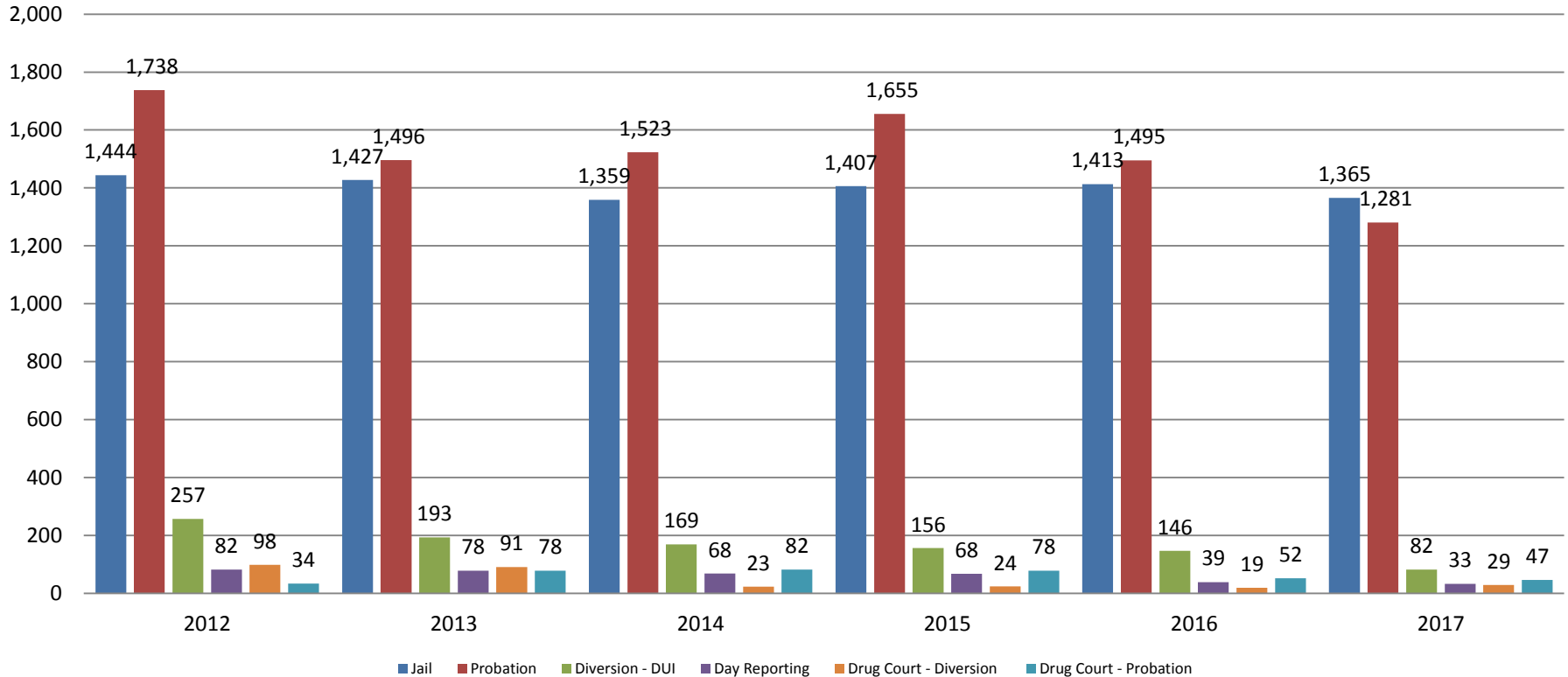


Jail includes individuals in booking, detention, work release and out-of county (combined)



# Correlation: Total & City of Wichita / Municipal Court Programs

## Total Annual ADP: 2012 - present

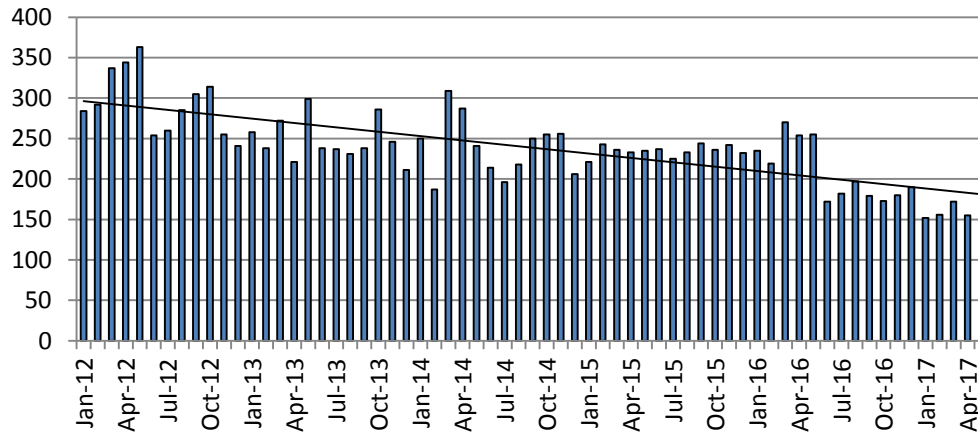


Jail includes individuals in booking, detention, work release and out-of county (combined)



# Juvenile

## JIAC Intakes: 2012 - present



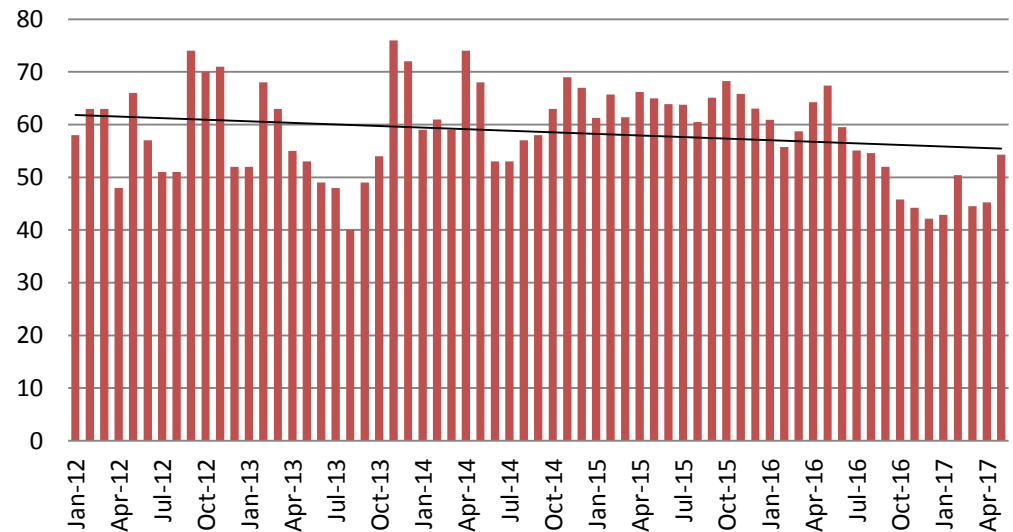
<u>May</u>	<u>May YTD Average</u>
2013 = 299	2013 = 258
2014 = 241	2014 = 255
2015 = 235	2015 = 234
2016 = 255	2016 = 247
2017 = 172	2017 = 161

(data obtained from SG CO Dept. of Corrections)

## JDF ADP: 2012 - present

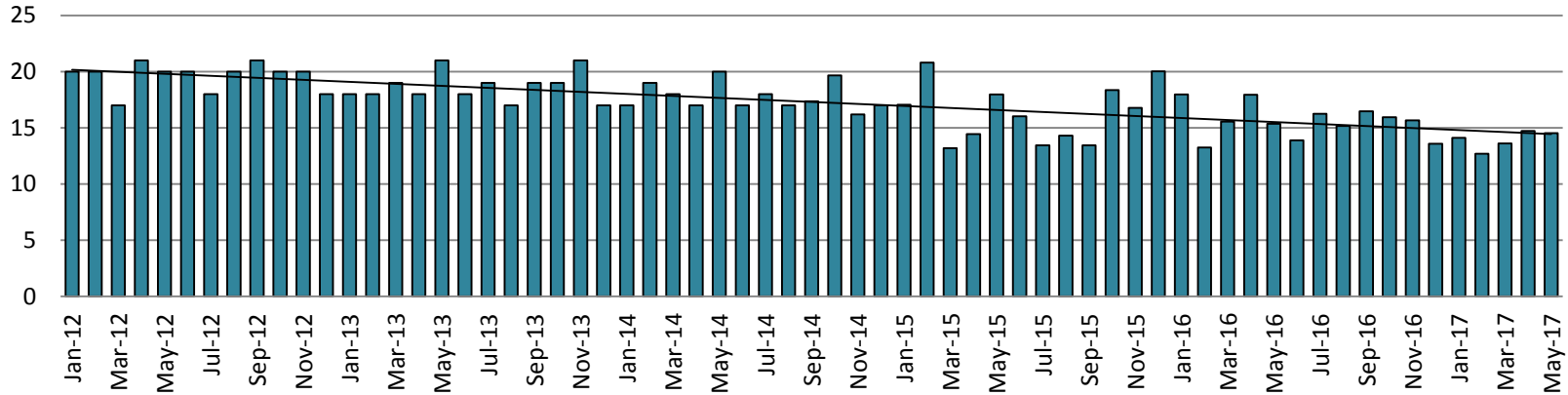
<u>May</u>	<u>May YTD Avg.</u>
2013 = 53	2013 = 58
2014 = 68	2014 = 64
2015 = 65	2015 = 64
2016 = 67	2016 = 61
2017 = 54	2017 = 47

(data obtained from SG CO Dept. of Corrections)

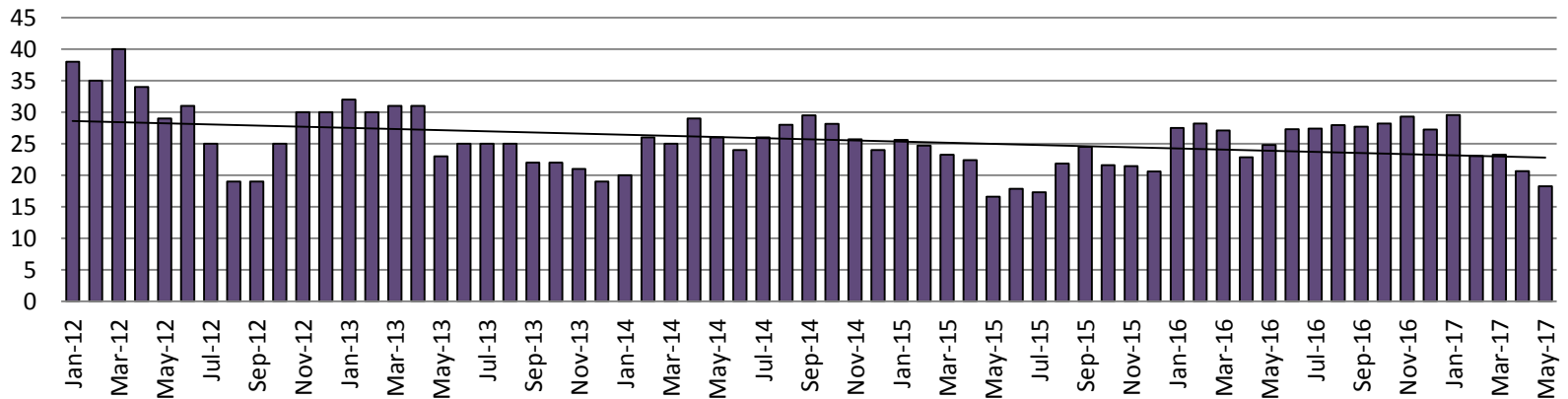


# Juvenile Detention Alternatives

## Juvenile Residential Facility (JRF) ADP: 2012 - present

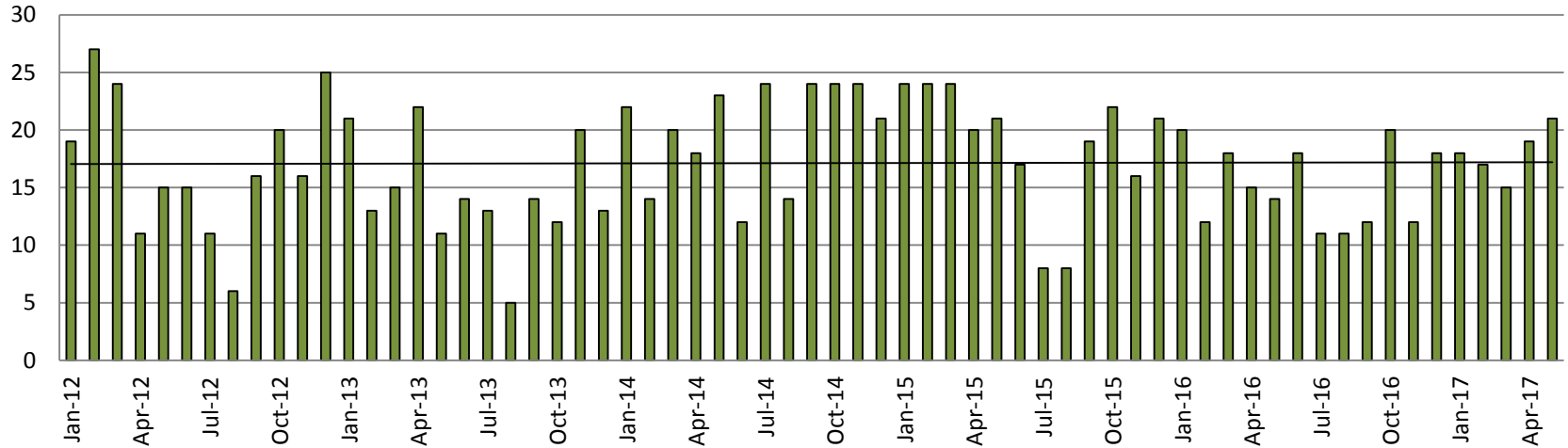


## Home-Based Supervision ADP: 2012 - present

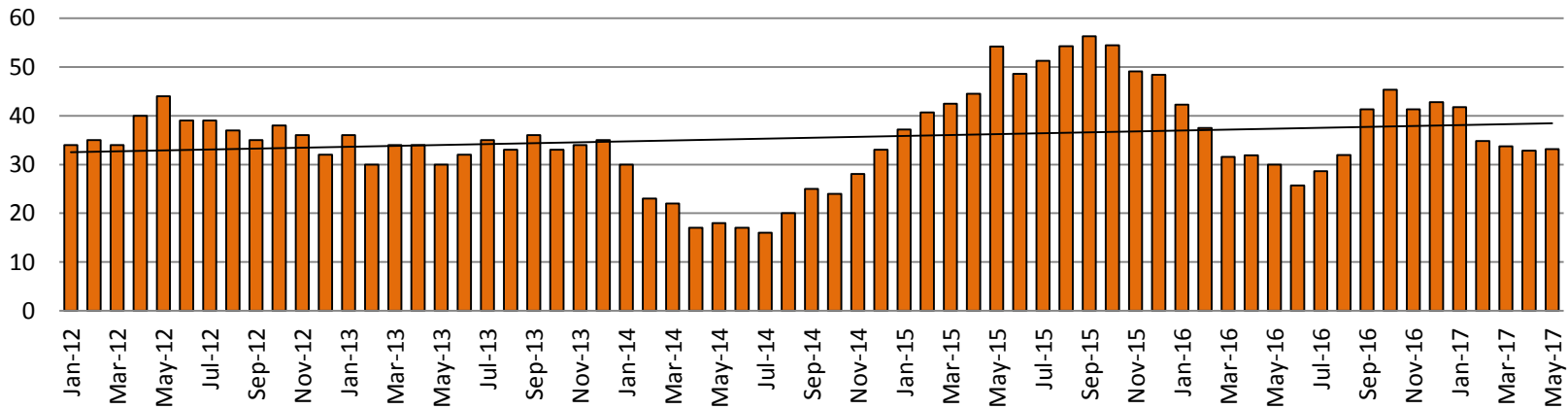


# Juvenile Detention Alternatives

## Weekend Alternative Detention Program 2012 - present



## Detention Advocacy Case Management Services ADP: 2012 - present



# Juvenile Detention Services

<b>May ADP</b>	<b>2014</b>	<b>2015</b>	<b>2016</b>	<b>2017</b>
Juvenile Detention Facility	68	65	67	54
Juvenile Residential Facility	20	18	15	15
Home Based Supervision	26	17	25	18
Detention Advocacy Case Management Services	18	54	30	33
Weekend Alternative Detention Program (total)	23	21	14	21

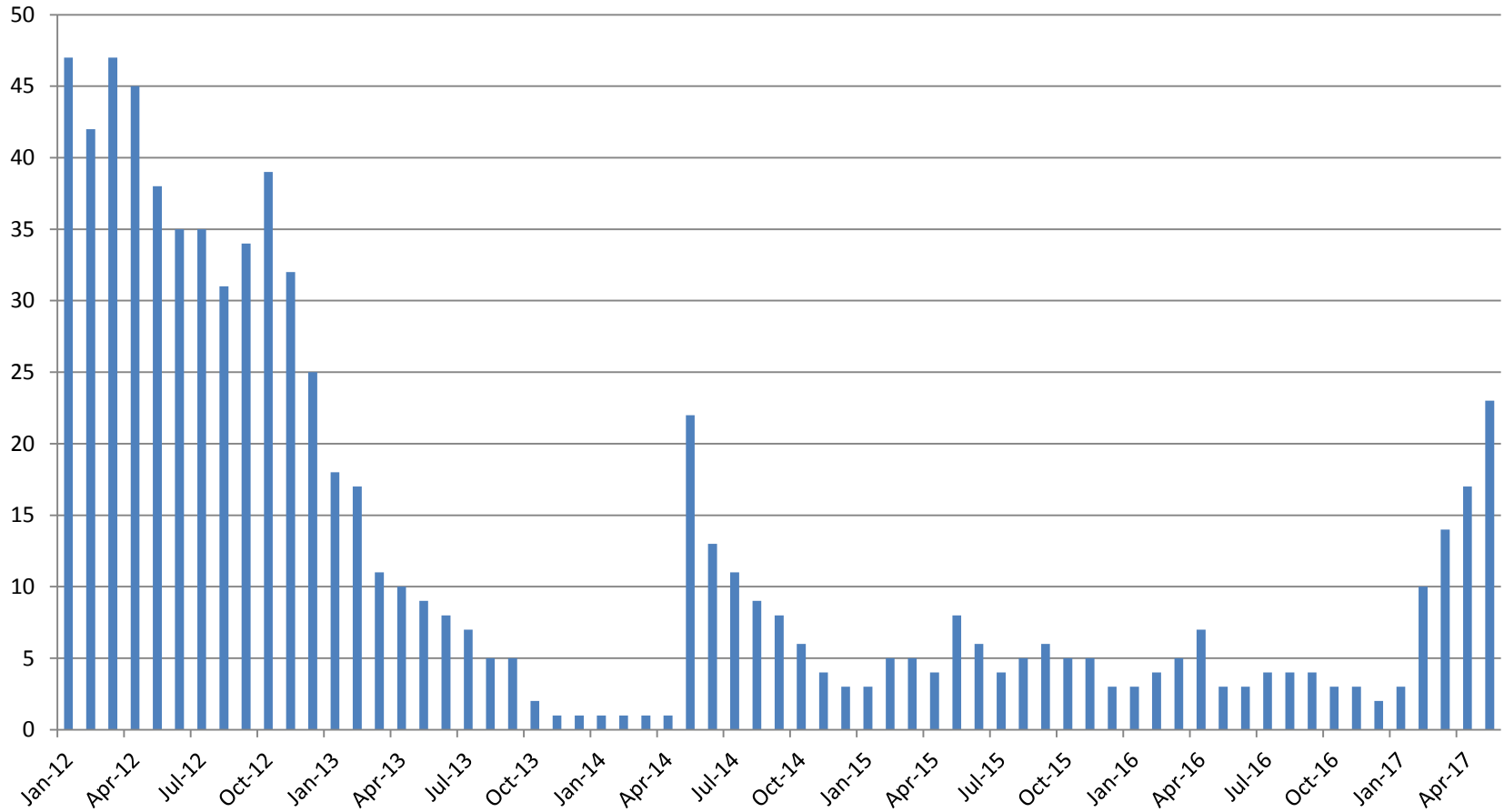
<b>May YTD AVERAGE</b>	<b>2014</b>	<b>2015</b>	<b>2016</b>	<b>2017</b>
Juvenile Detention Facility	64	64	61	47
Juvenile Residential Facility	18	17	16	14
Home Based Supervision	25	23	26	23
Detention Advocacy Case Management Services	22	44	35	35
Weekend Alternative Detention Program	19	23	16	18





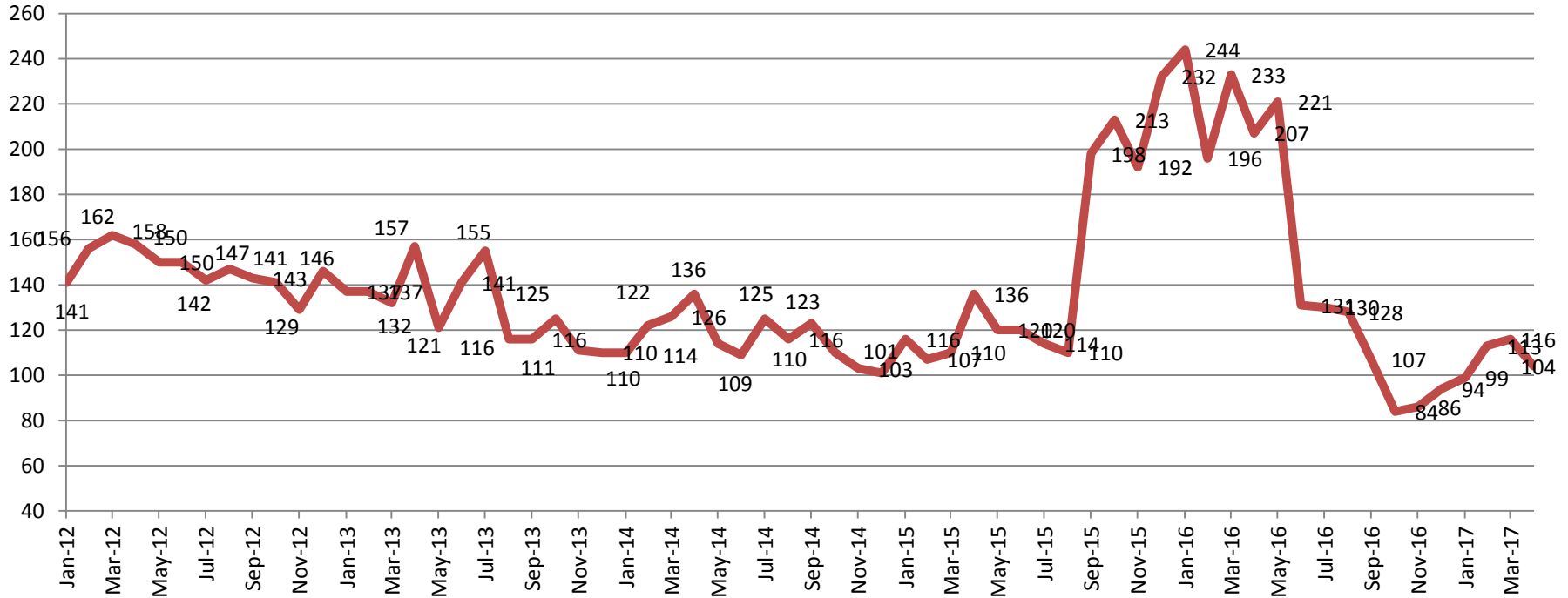
# Monthly Jail Snapshot: May 31, 2017

## BICE Holds 2012-Present



# Monthly Jail Snapshot: May 31, 2017

## Felony Commitments: February 2012 - present



### May:

2012 = 158

2013 = 157

2014 = 136

2015 = 136

2016 = 207

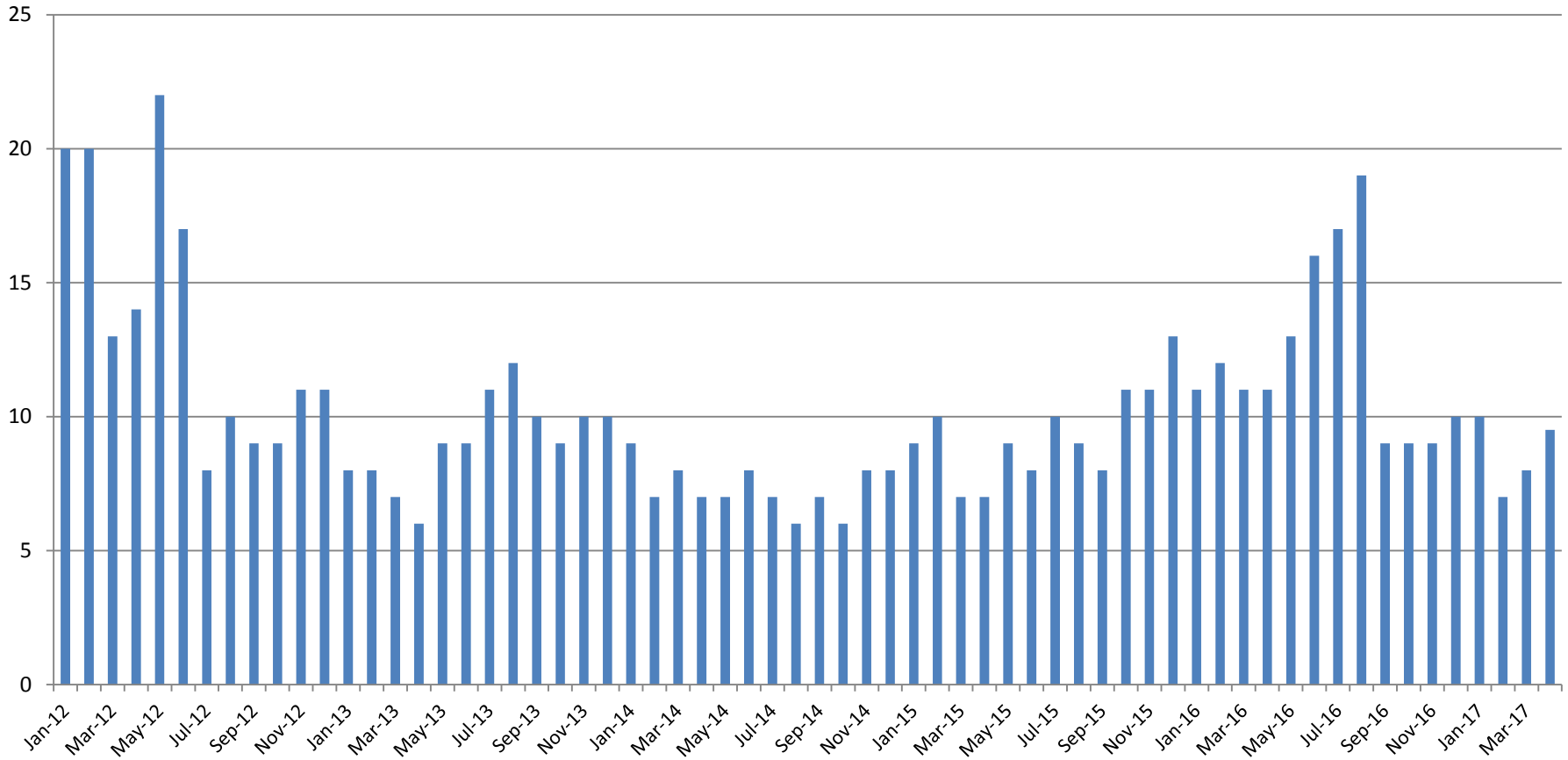
2017 = 104

(data obtained from SG CO DIO)



Sedgwick County...  
working for you

## Journal Entry Completion (Average Days) January 2013-Present



This data is always reported a month behind

