

Criminal Justice Coordinating Council

Population Report & Program Trends

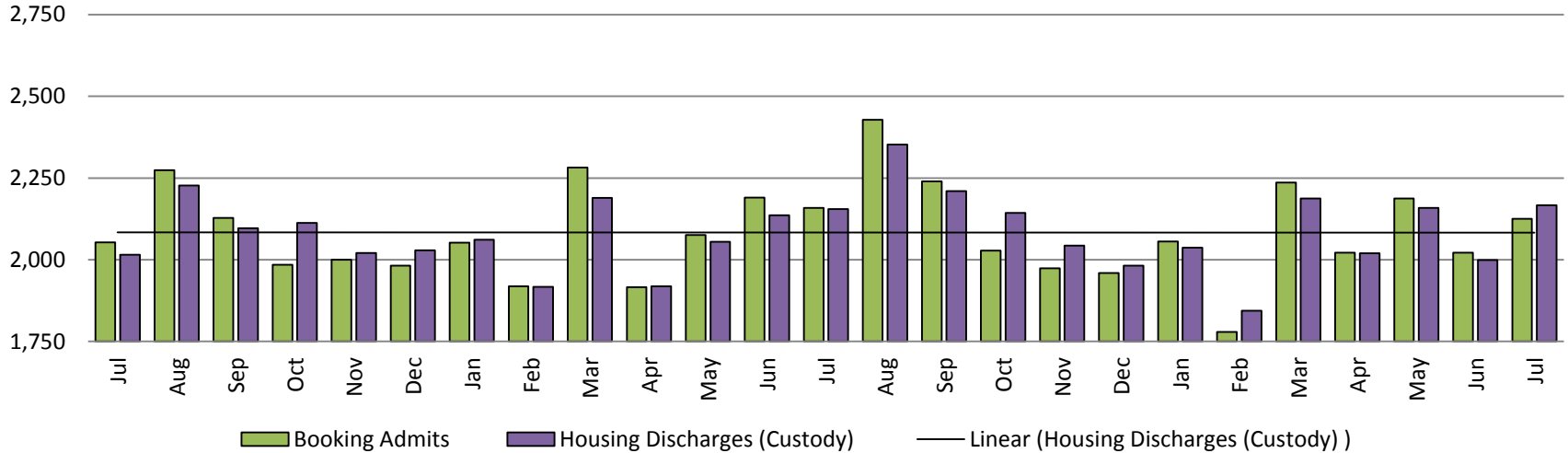
August 2018



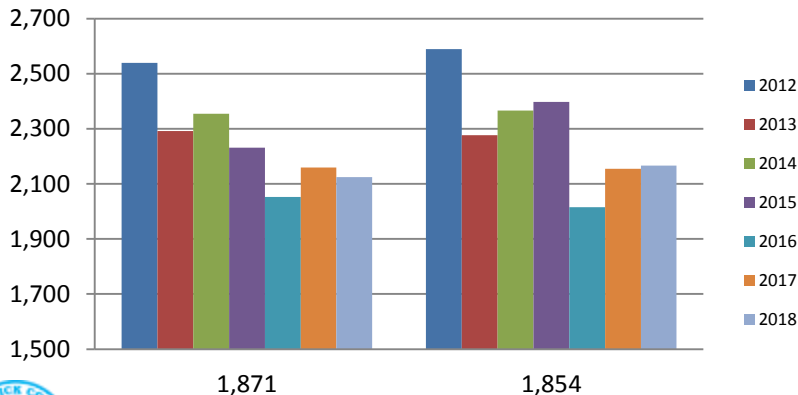
Sedgwick County...
working for you

Detention Facility

Booking Admits & Housing Discharges from Custody July 2016-Present



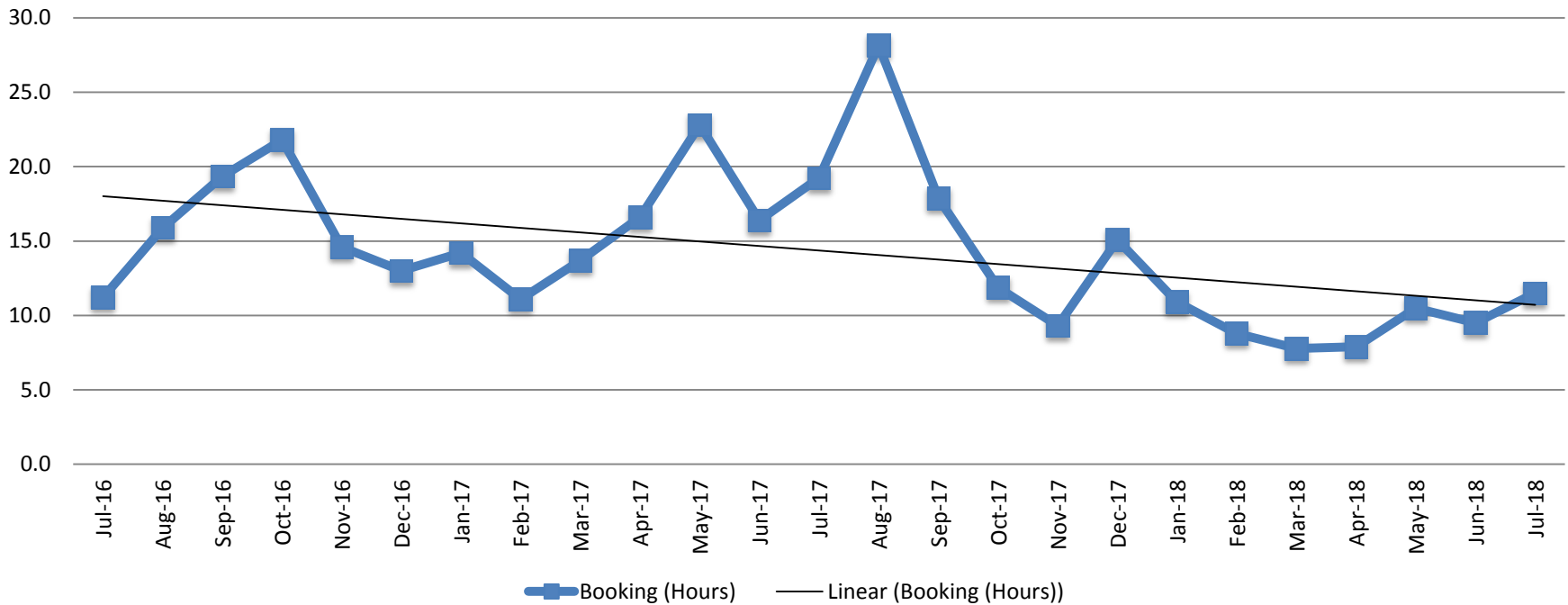
Bookings Year over Year: Month of July



Bookings July	Housing Discharges July
2016: 2,053	2016: 2,015
2017: 2,190	2017: 2,155
2018: 2,125	2018: 2,167

(data obtained from detention facility)

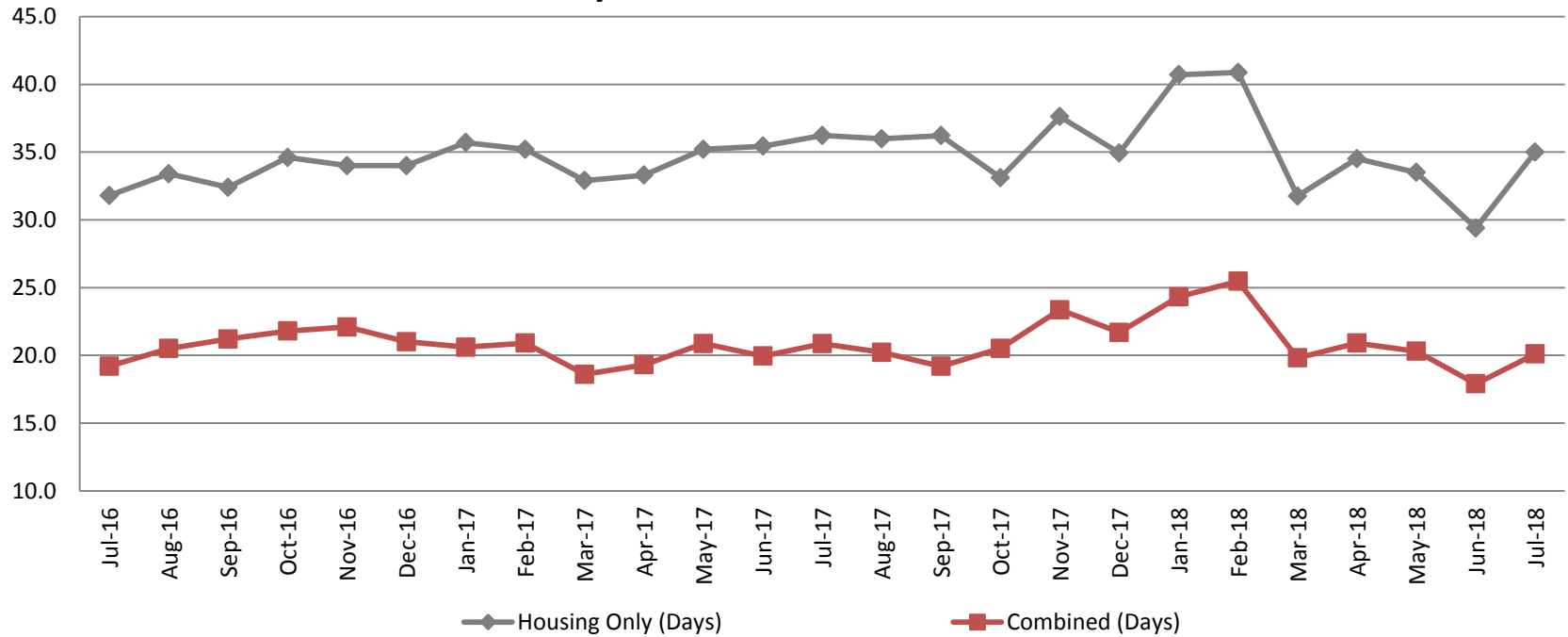
Average Length of Stay: Booking (Hours) July 2016 - Present



July	July YTD Average
2016: 11.2	2016: 19.1
2017: 19.2	2017: 16.3
2018: 11.5	2018: 9.6



Average Length of Stay: Housing & Combined (Days) July 2016 - Present

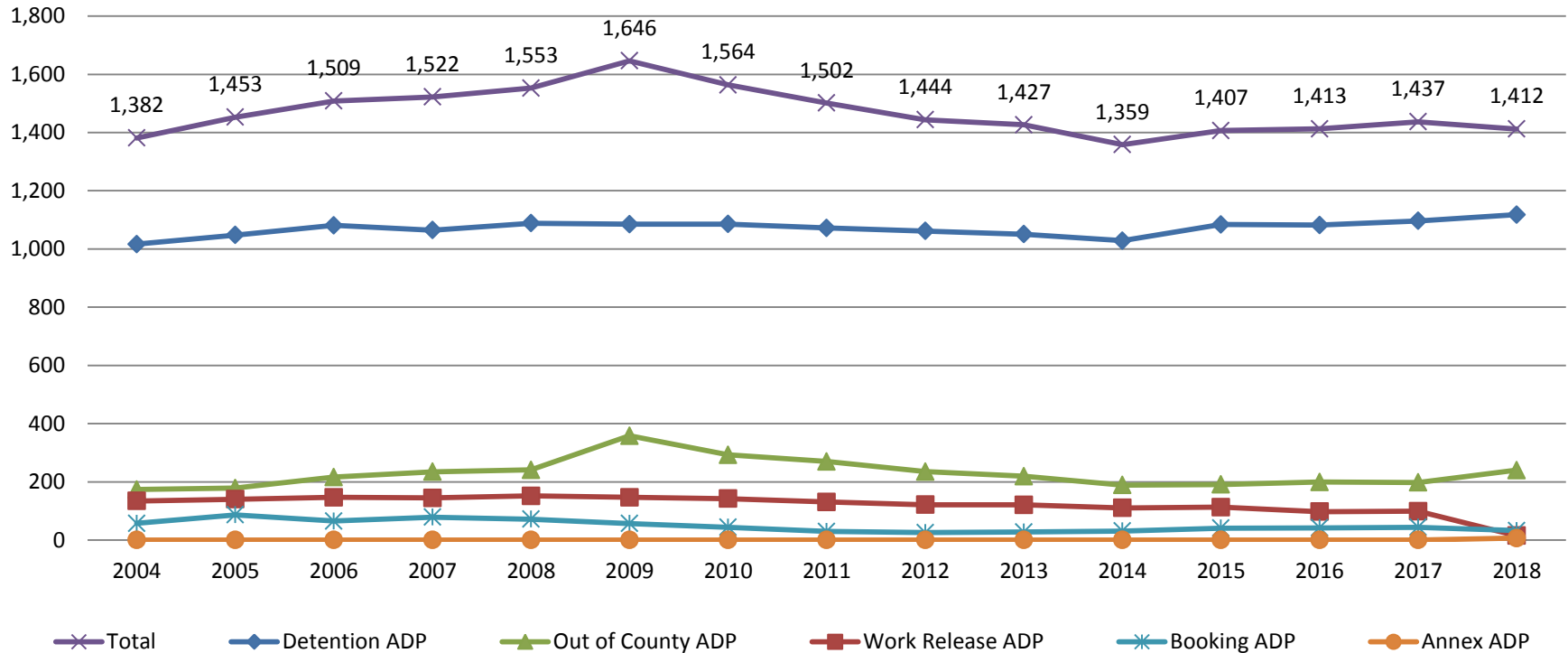


Month Year	Housing Only	Housing YTD AVG	Combined Days	Combined YTD AVG
July 2016	31.8	35.6	19.2	19.
July 2017	36.2	34.9	20.9	20.2
July 2018	35.0	35.1	20.1	21.3



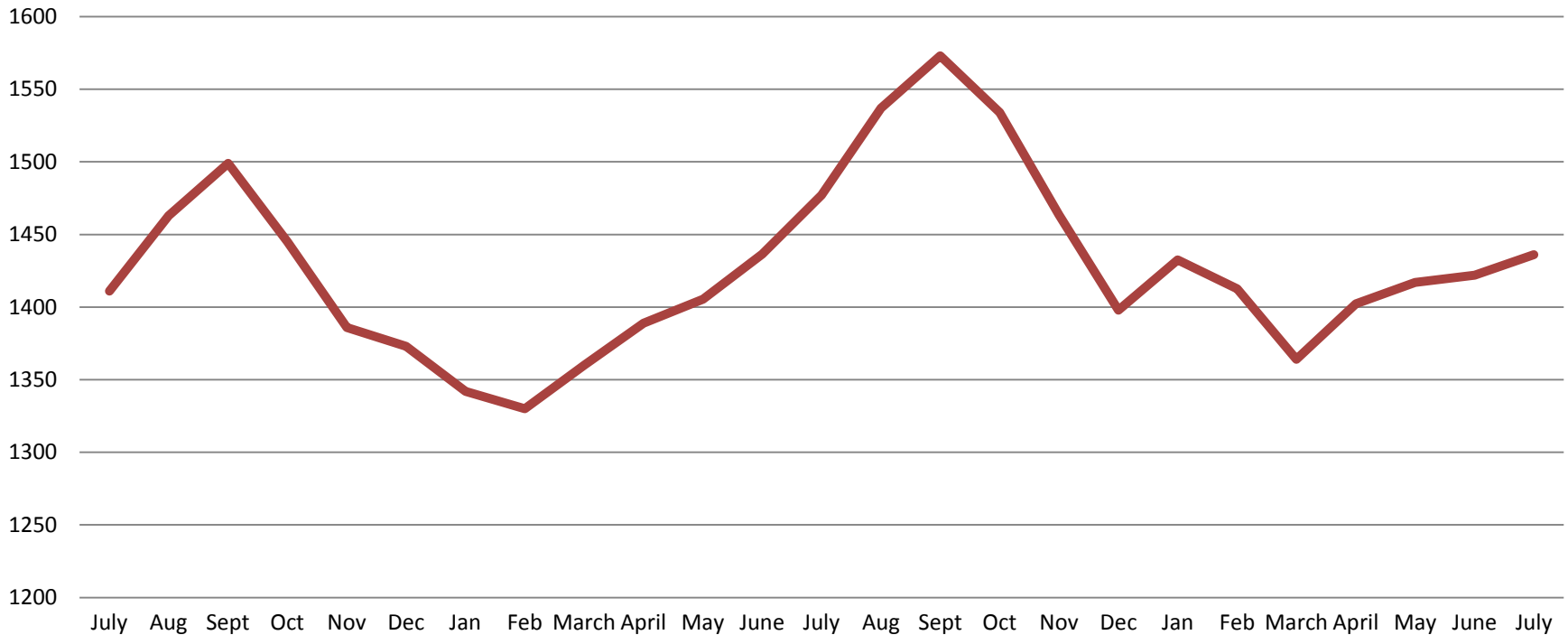
Jail: Annual Average Daily Population (ADP)

TRENDS: Booking, Detention, Work Release, & Out of County Annual ADP: 2004 - present



*Beginning January 2018, Work Release program began transfer to Division of Corrections

TOTAL MONTHLY ADP: JAIL (Booking, Detention Facility, Work Release, & Out of County) July 2016 - present

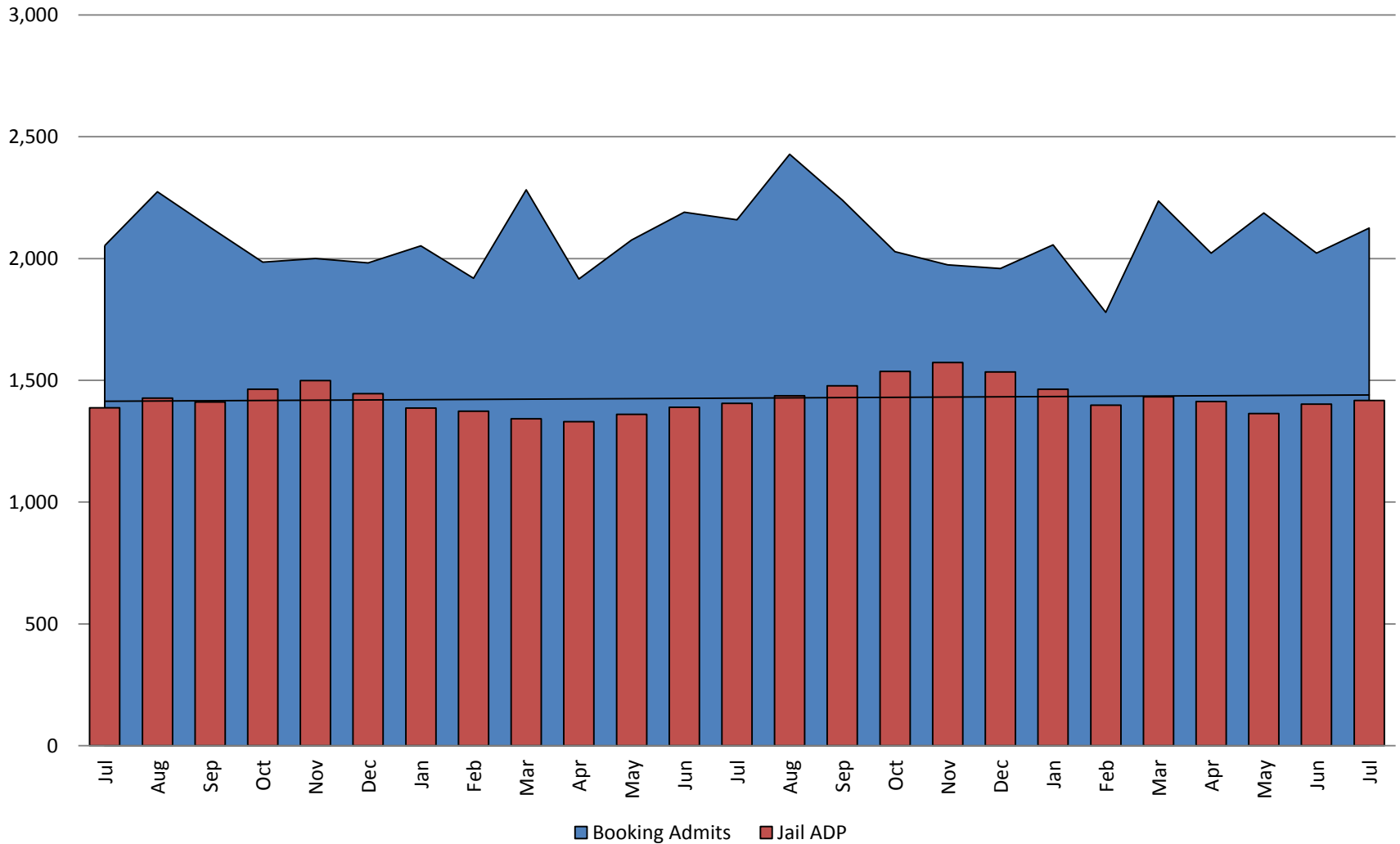


July 2016	July 2017	July 2018
1,411	1,477	1,436

*Beginning January 2018, Work Release program began transfer to Division of Corrections

This slide shows total monthly ADP for individuals in booking, detention, work release, jail annex, and out-of county (combined)
(data obtained from detention facility)

Booking Admits & Total Monthly ADP (Jail): July 2016 - present



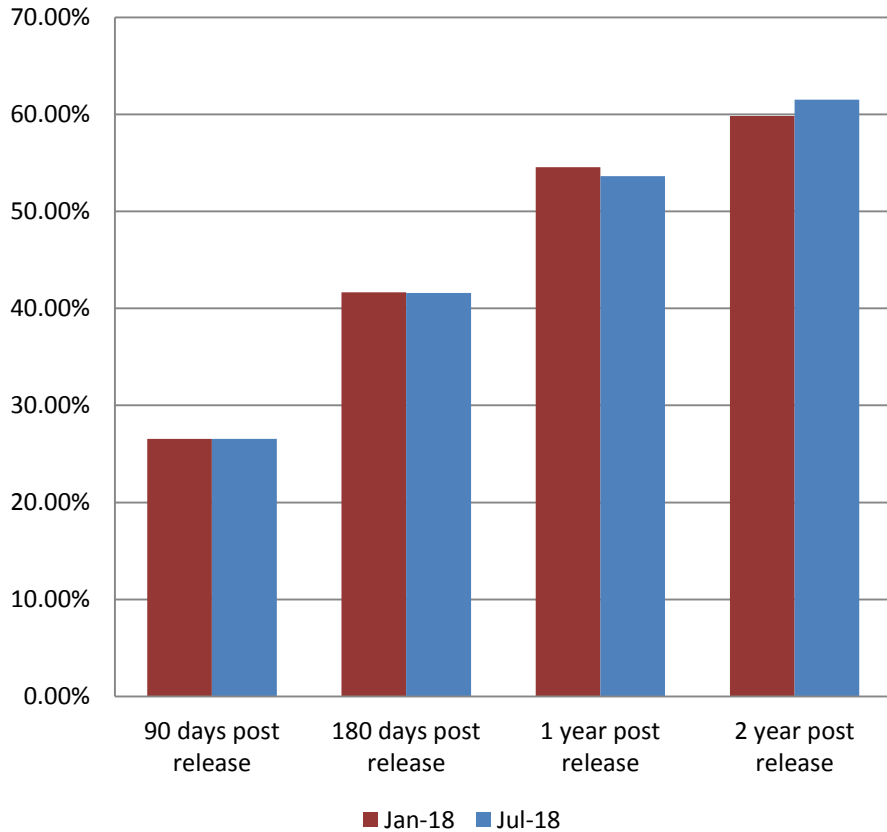
Jail includes individuals in booking, detention, work release and out-of county (combined)

(data obtained from detention facility)



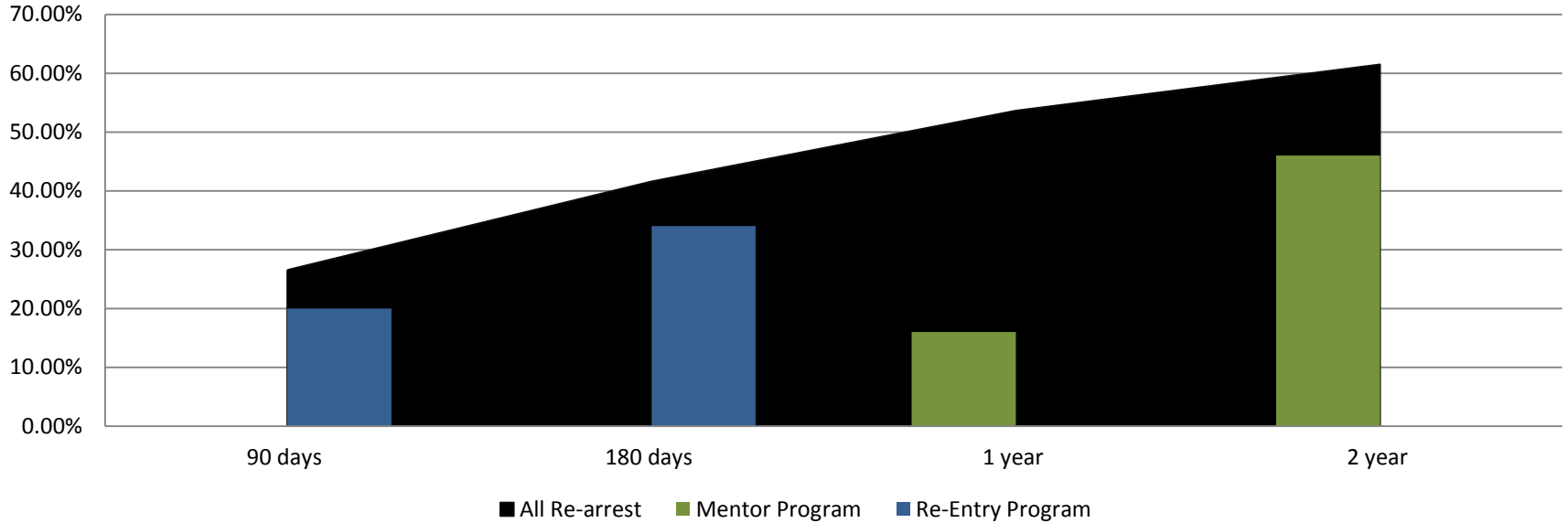
Sedgwick County...
working for you

Percent of released inmates rearrested January & July comparison



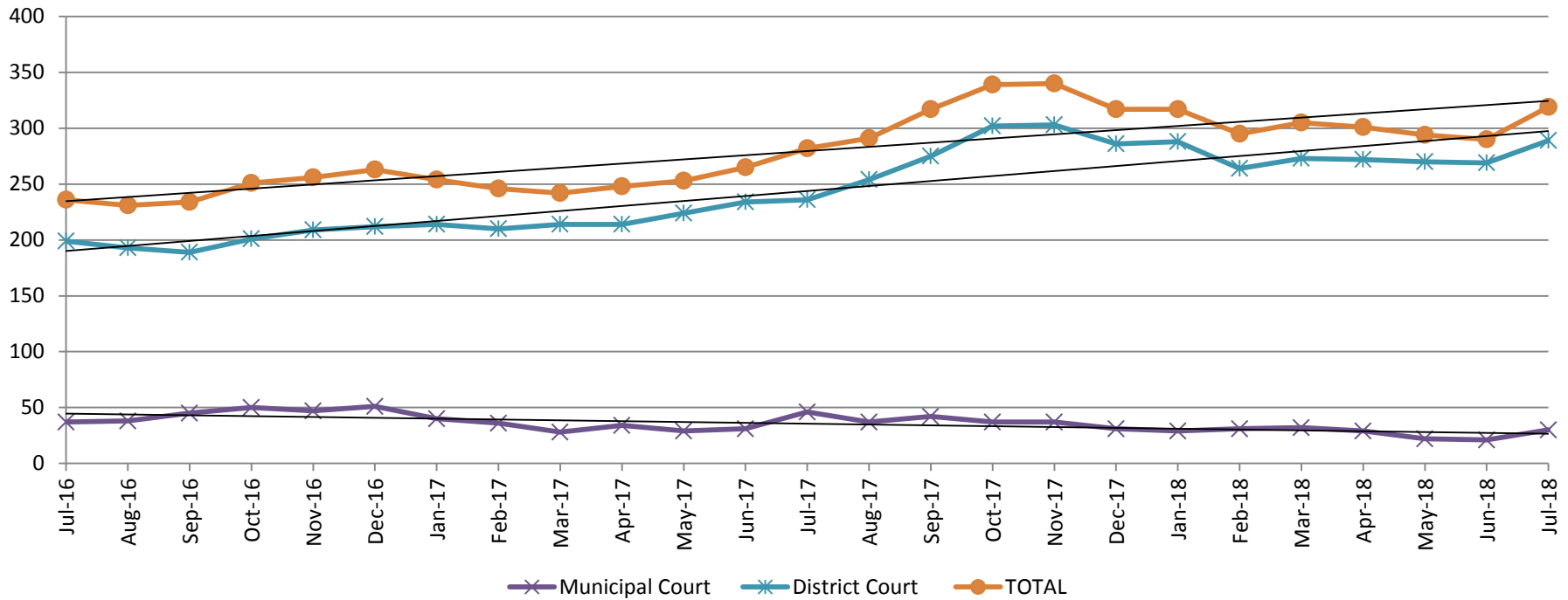
Month 2018	90 Days	180 Days	1 Year	2 Years
Jan	26.55%	41.67%	54.57%	59.84%
Feb	27.39%	40.22%	54.02%	61.03%
March	28.00%	41.08%	51.69%	60.03%
April	28.13%	39.41%	52.82%	62.93%
May	29.80%	41.88%	52.18%	62.81%
June	27.71%	41.92%	54.94%	62.07%
July	26.55%	41.60%	53.64%	61.50%

Recidivism for Programs July 2018



July 2018	90 Days	180 Days	1 year	2 years
All Re-arrests	26.55%	41.60%	53.64%	61.50%
Mentor Program	0%	0%	16%	46%
Re-Entry Program	20%	34%	N/A	N/A

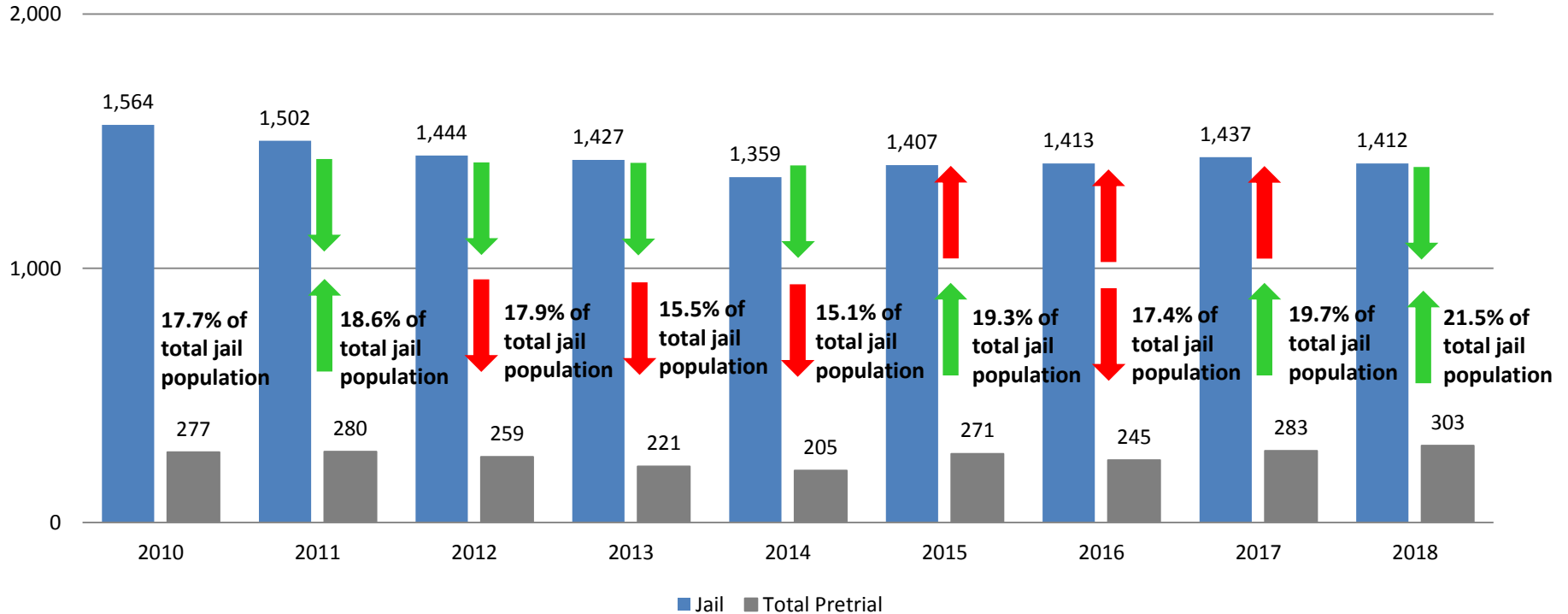
Pretrial Services Program (PSP) Monthly ADP: July 2016 - Present



July	2016 ADP	2017 ADP	2018 ADP	2016 YTD Avg.	2017 YTD Avg.	2018 YTD Avg.
Muni. Court	37	46	30	31	35	28
Dist. Court	199	236	289	212	221	275
Total	236	282	319	244	256	303

Correlation: Total & PSP

Total Annual ADP: 2010 - Present



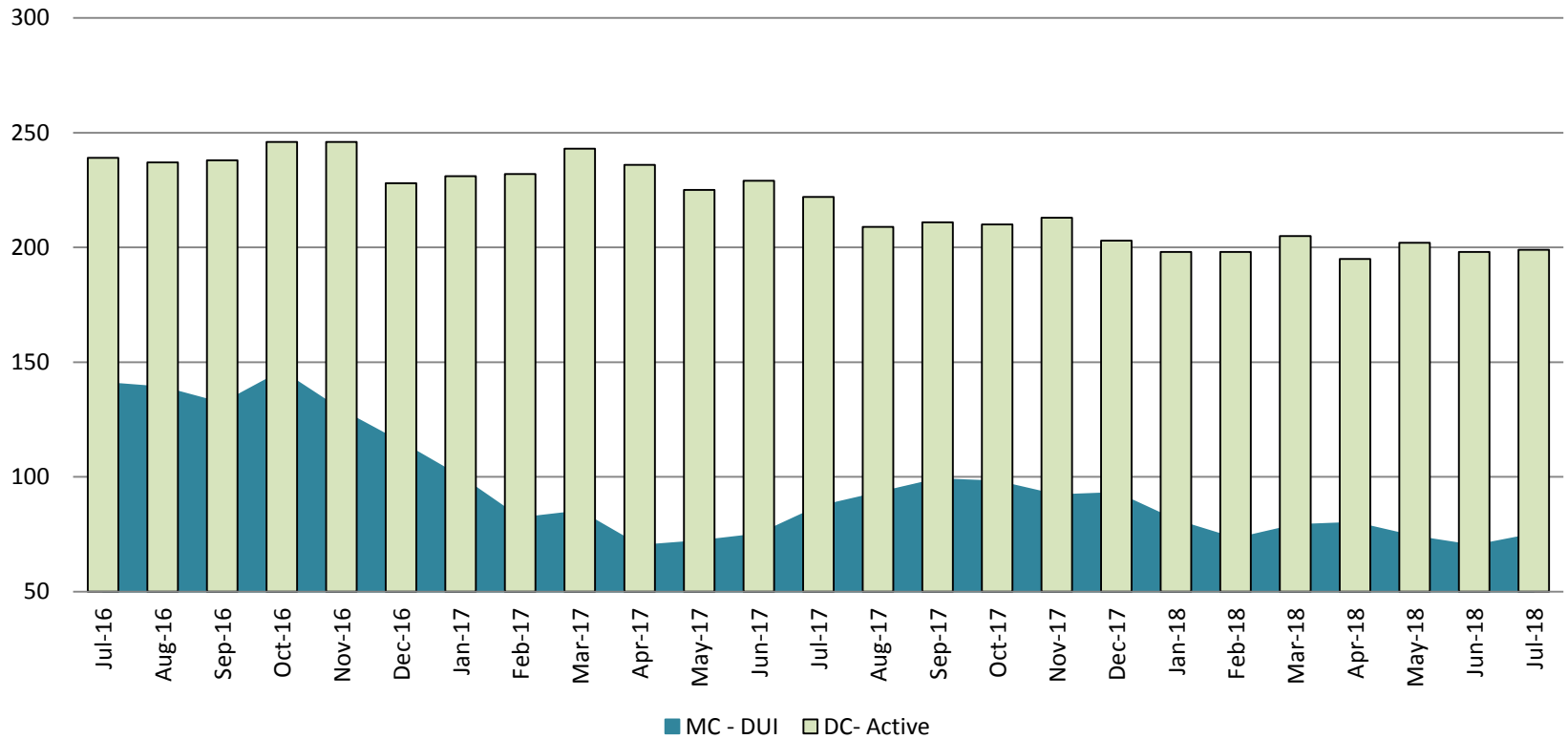
Arrows represent the overall increase/decrease of the population from year to year

Jail includes individuals in booking, detention, work release and out-of county (combined)



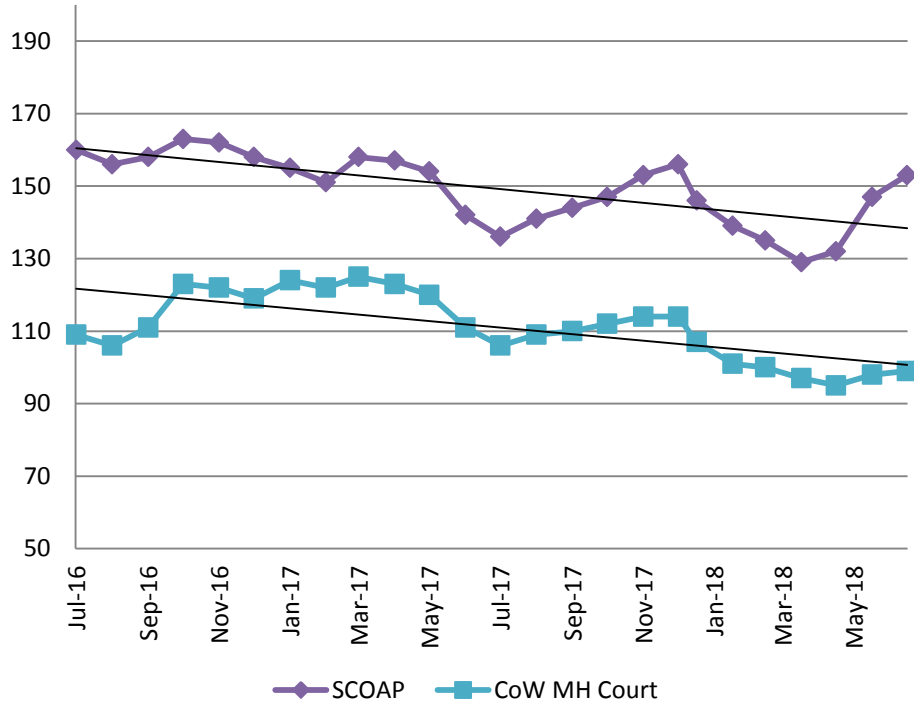
Diversion - Active Caseload

July 2016 - Present

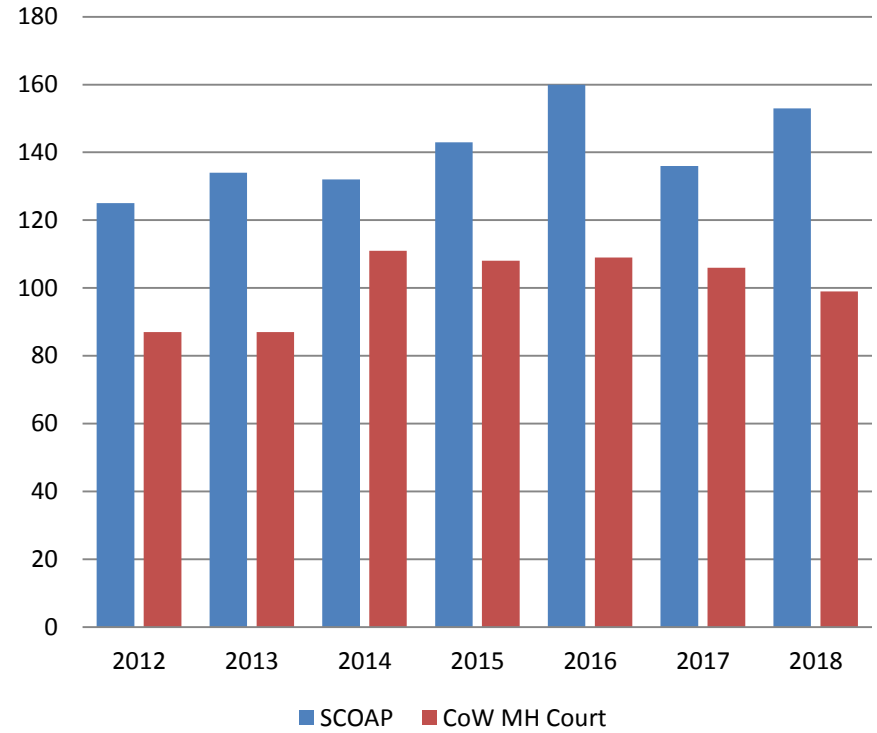


July	2016	2017	2018	2016 YTD Avg.	2017 YTD Avg.	2018 YTD Avg.
Muni. Court- DUI	141	87	75	156	82	76
Dist. Court- Active	239	222	199	234	231	199

Mental Health - ADP July 2016 - present

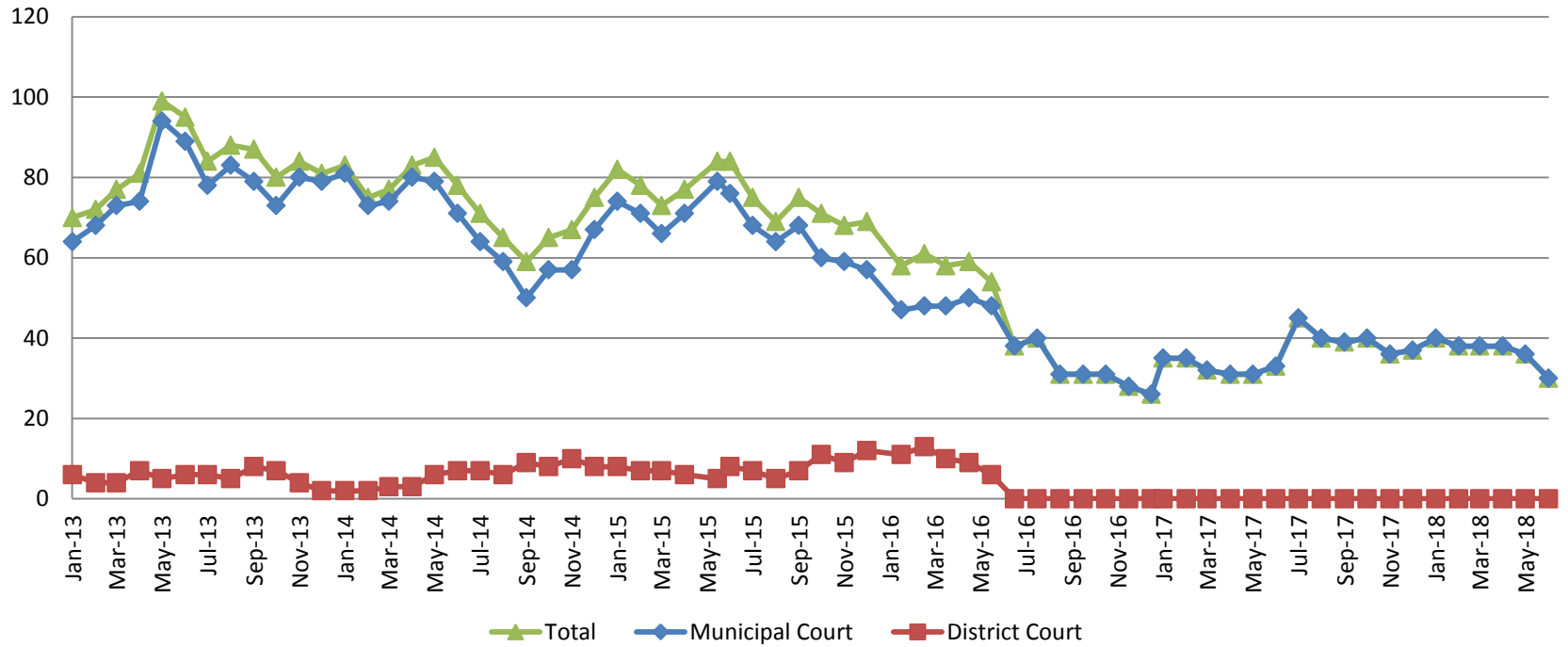


Mental Health ADP Year over Year- July



July	2016 ADP	2017 ADP	2018 ADP	2016 YTD Avg.	2017 YTD Avg.	2018 YTD Avg.
SCOAP	160	136	153	159	150	140
MH Court	109	106	99	102	119	100

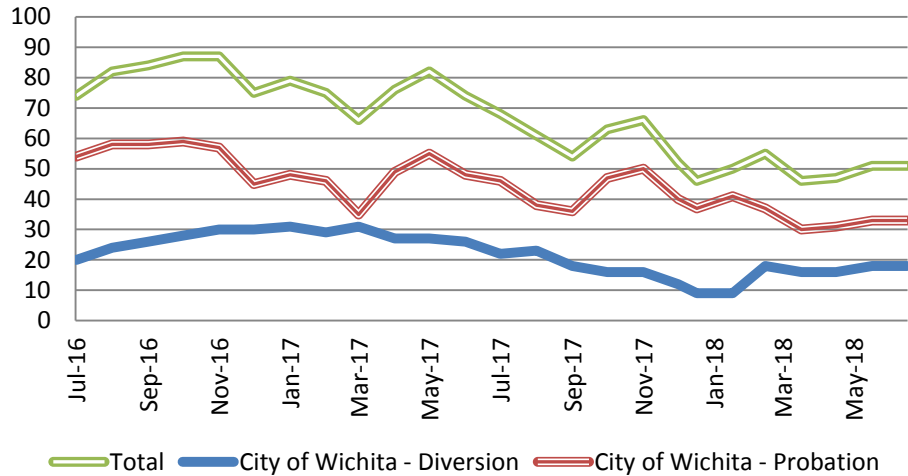
Day Reporting - Active Caseload 2013-present



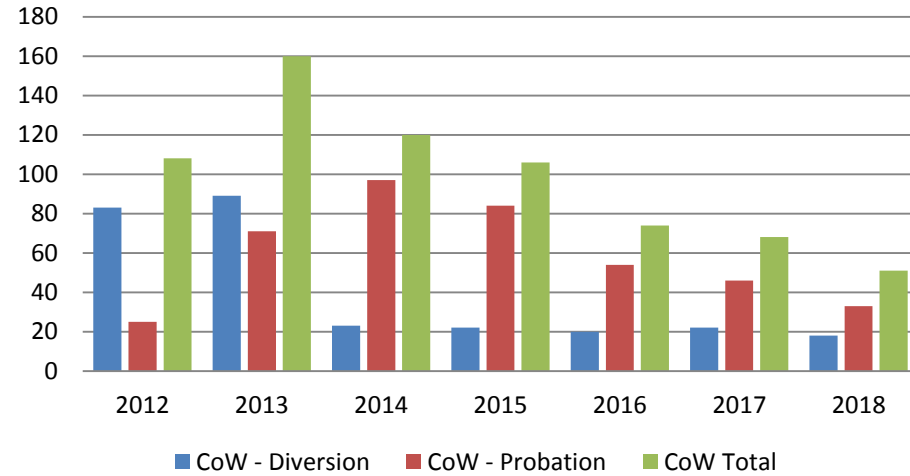
	July 2013	2014	2015	2016	2017	2018
Muni. Court	78	64	68	40	33	No data
Muni. Court YTD Avg.	77	75	72	46	33	37



Drug Court - City of Wichita ADP: July 2016- present



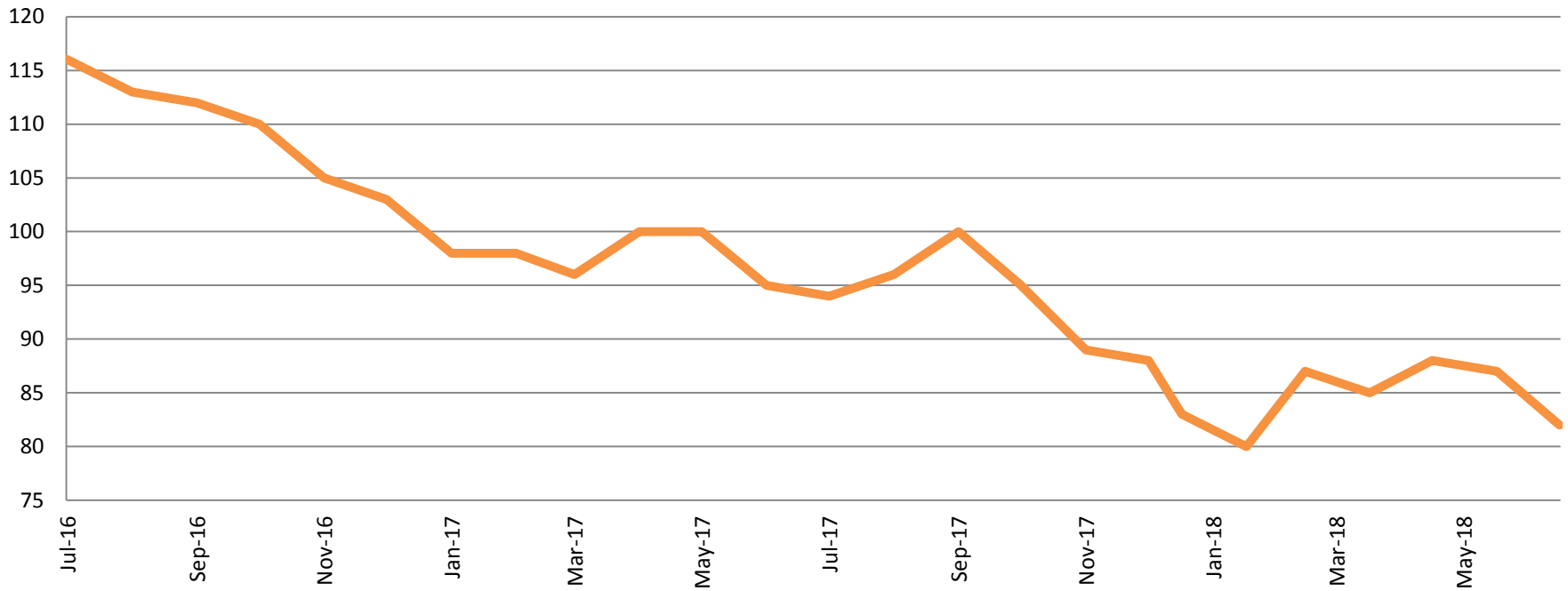
Drug Court- City of Wichita Year over Year- July



July	2016	2017	2018
Diversion	20	22	18
Probation	54	46	33
Total	74	68	51

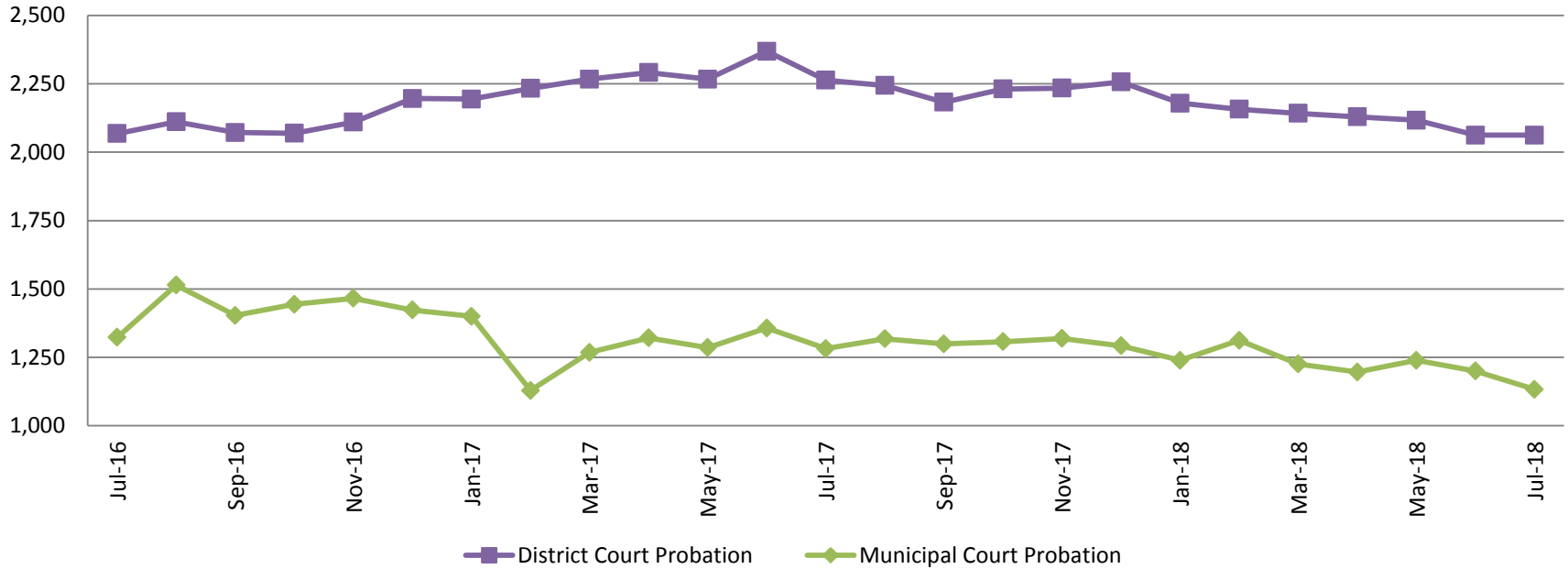


Drug Court - Sedgwick County ADP: July 2016 - present



	July	2016	2017	2018
Sedg. Co. ADP	116	94	82	
YTD Avg.	110	97	85	

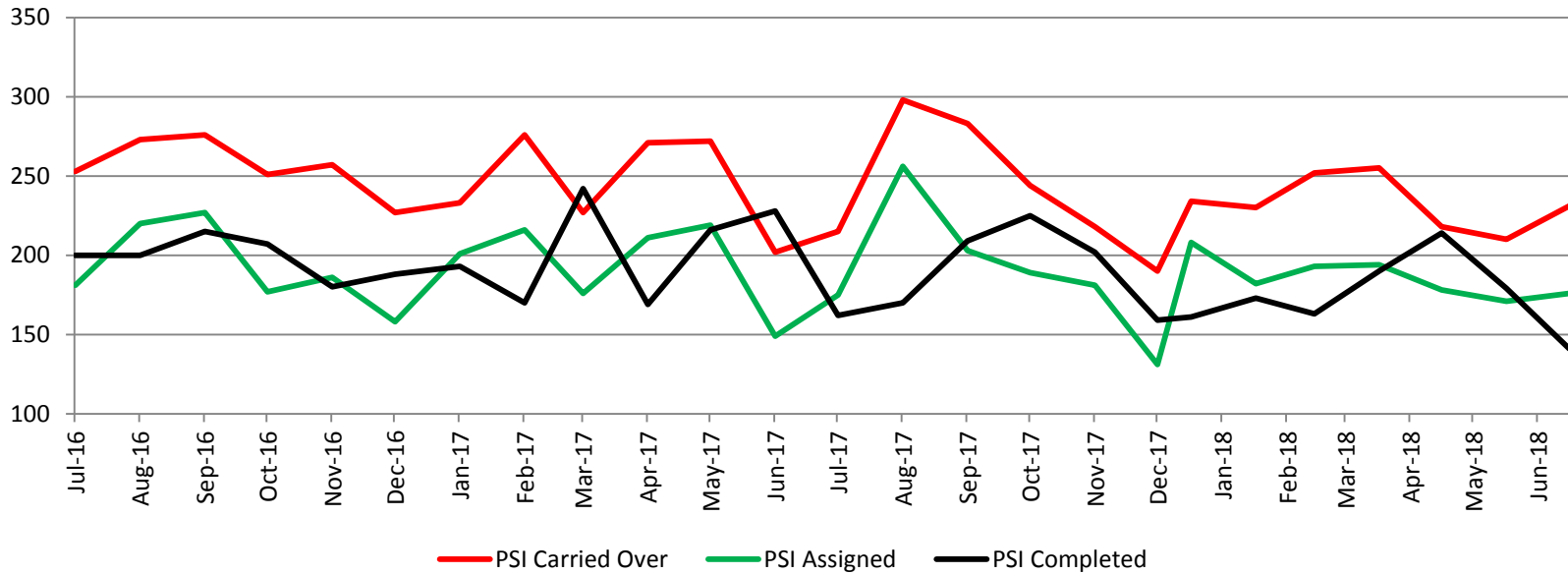
Probation - Active Caseloads July 2016 - present



July	2016	2017	2018	2016 YTD Avg.	2017 YTD Avg.	2018 YTD Avg.
Dist. Court Probation	2,068	2,263	2,098	2,200	2,269	2,126
Muni. Court Probation	1,323	1,282	1,133	1,527	1,292	1,221



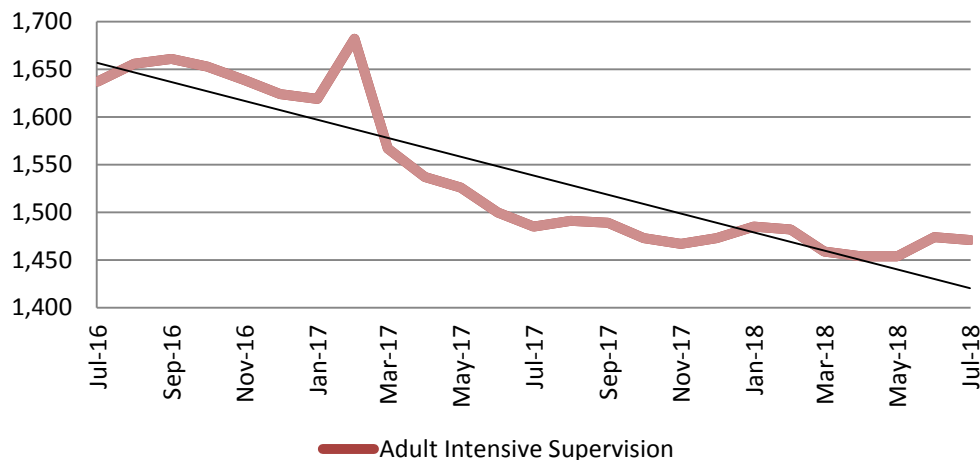
District Court Probation: Pre-Sentence Investigation July 2016 - present



July	2016	2017	2018
Carried Over	253	215	231
Assigned	181	175	176
Completed	200	162	141

Community Corrections

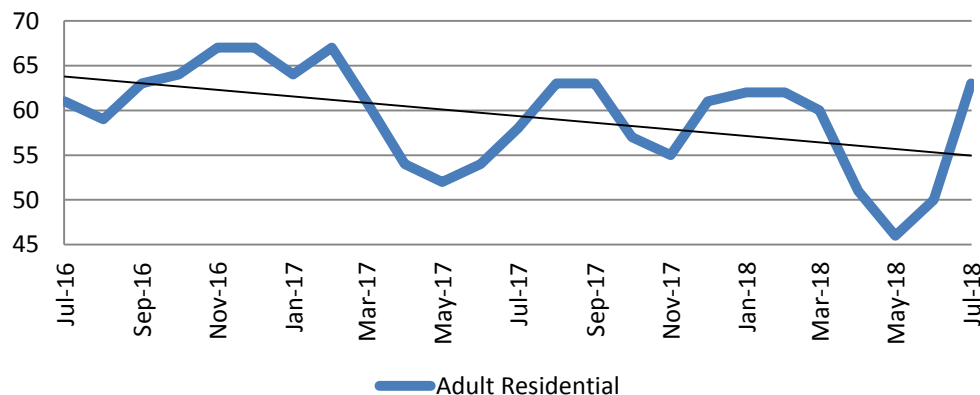
Adult Intensive Supervision Probation (AISP): ADP
July 2016- present



Year	July	July YTD Avg.
2016	1,637	1,616
2017	1,485	1,559
2018	1,471	1,468

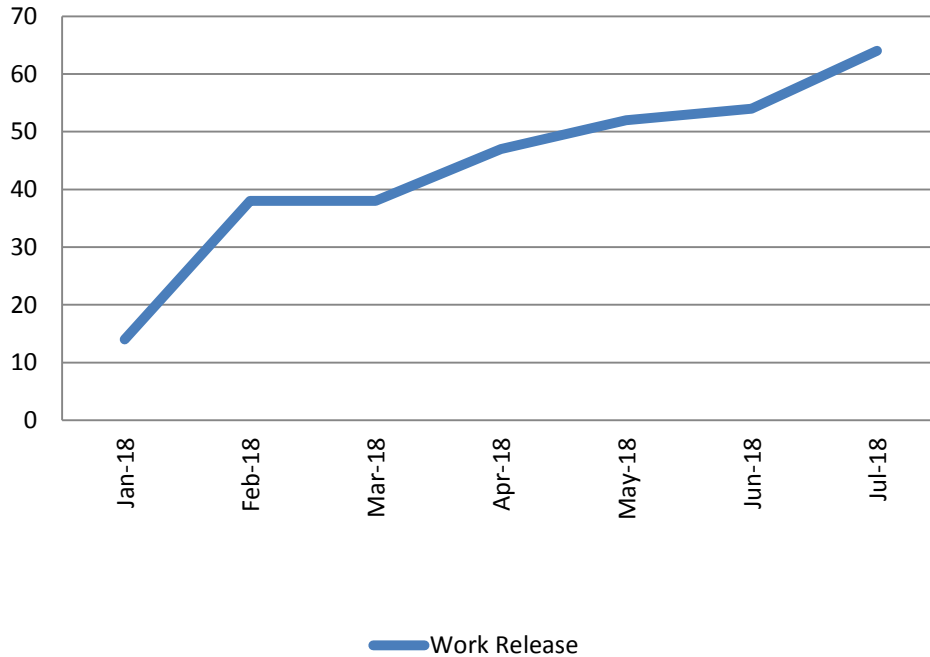
Year	July	July YTD Avg.
2016	61	63
2017	58	59
2018	63	56

Adult Residential: ADP
July 2016- present



Community Corrections

**Work Release: ADP
Jan 2018- present**

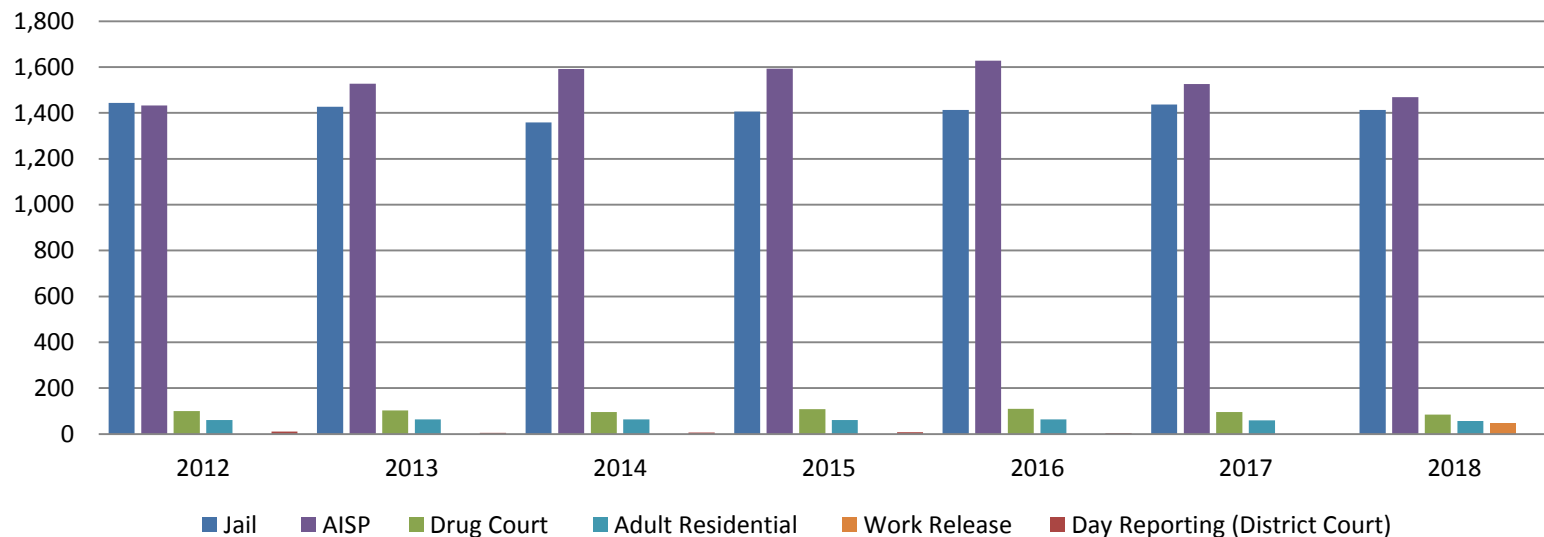


Month	Total	YTD Avg.
January	14	14
February	38	26
March	38	30
April	47	34
May	52	38
June	54	41
July	64	44



Correlation: Total & Sedgwick County Programs (Adult)

Total Annual ADP 2012-Present



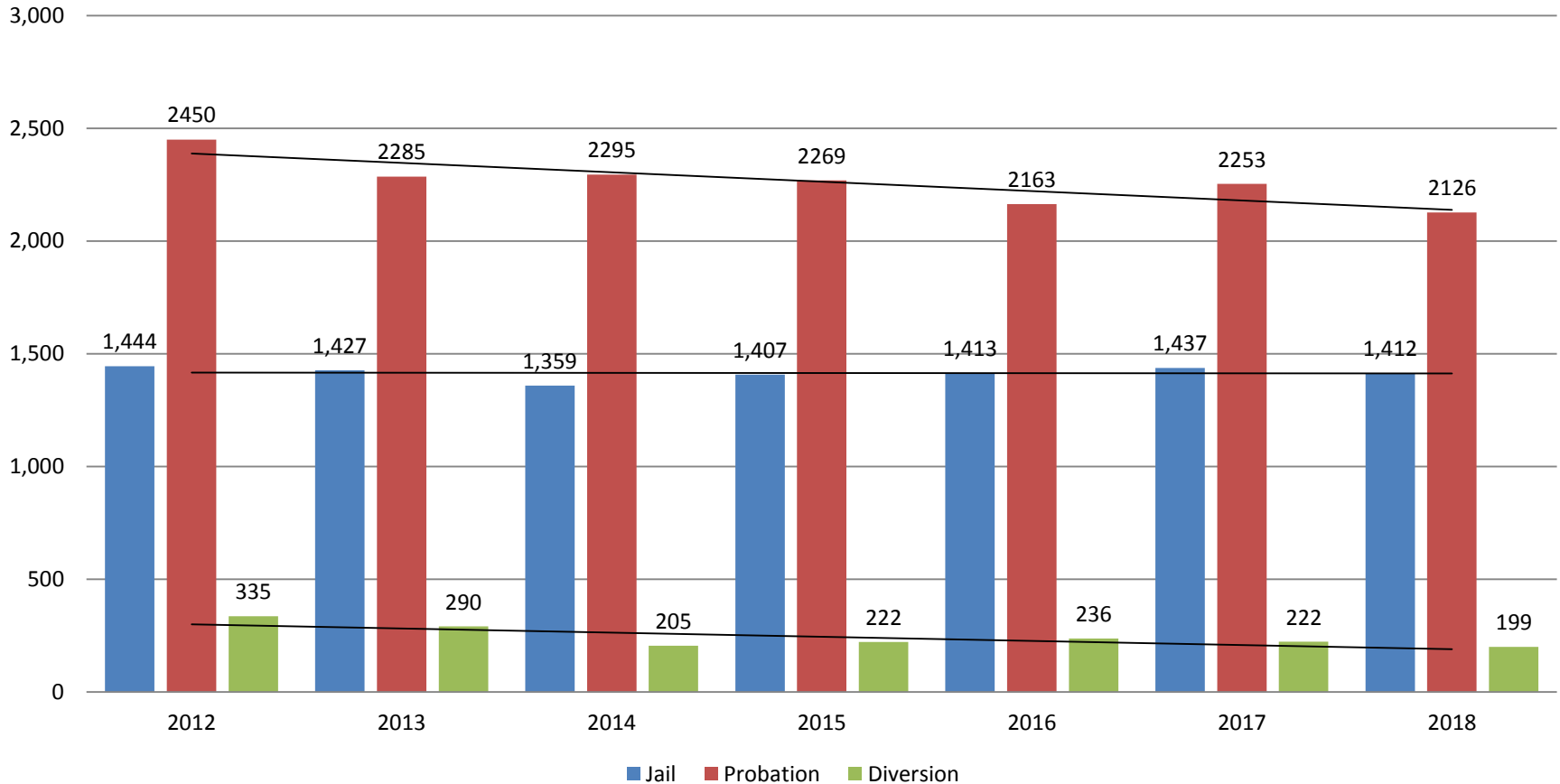
	2016	2017	2018
Jail	1,413	1,437	1,412
AISP	1,629	1,526	1,468
Drug Court	109	96	85
Adult Residential	63	59	56
Work Release	0	0	44
Day Reporting (DC)	4	0	0



Jail includes individuals in booking, detention, work release and out-of county (combined)
 Sedgwick County... working for you (data obtained from detention facility, SG Dept. of Corrections, Pretrial Services, & CoW)

Correlation: Total & District Court Programs

Total Annual ADP: 2012 - Present

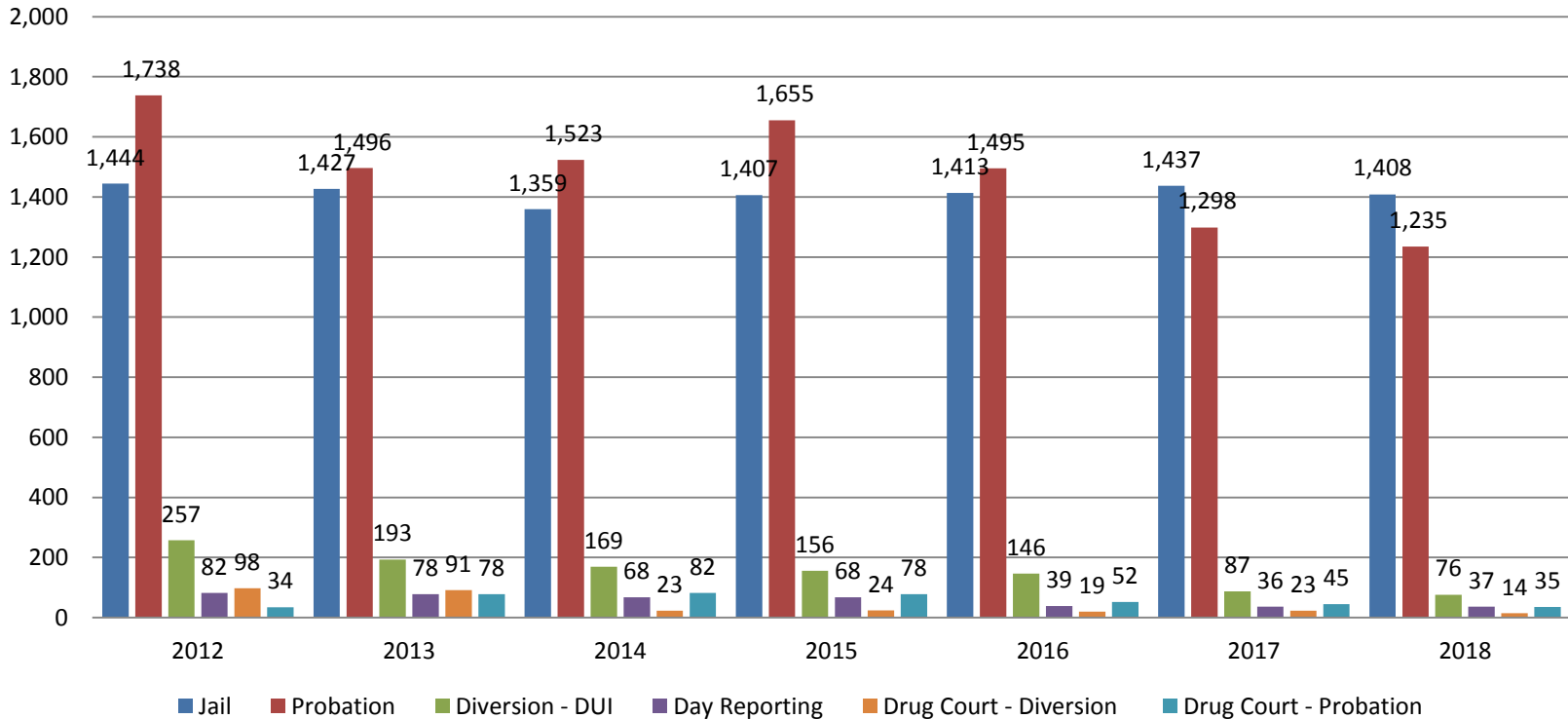


Jail includes individuals in booking, detention, work release and out-of county (combined)



Correlation: Total & City of Wichita / Municipal Court Programs

Total Annual ADP: 2012 - present

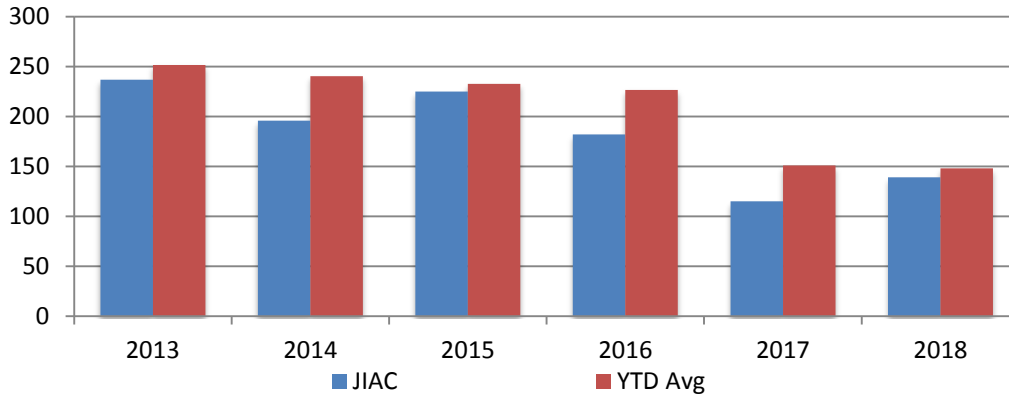


Jail includes individuals in booking, detention, work release and out-of county (combined)



Juvenile

JIAC Intakes
July 2013 - present

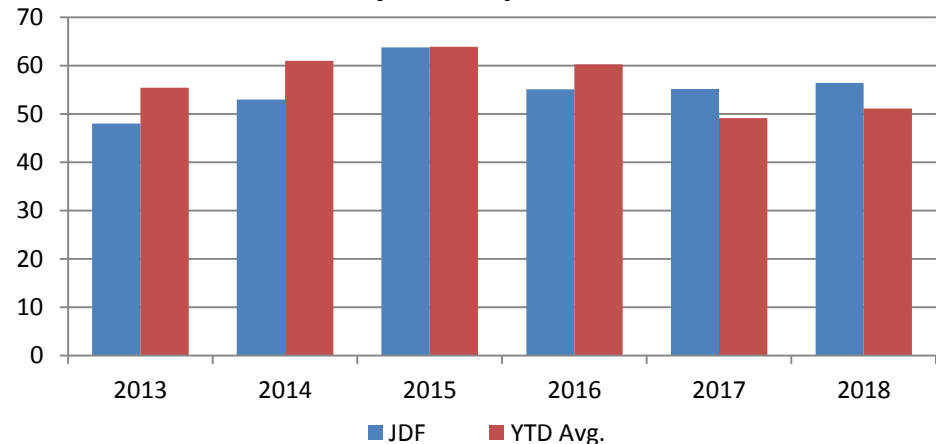


Year	July	July YTD Avg.
2013	237	252
2014	196	241
2015	225	233
2016	182	227
2017	115	151
2018	139	148

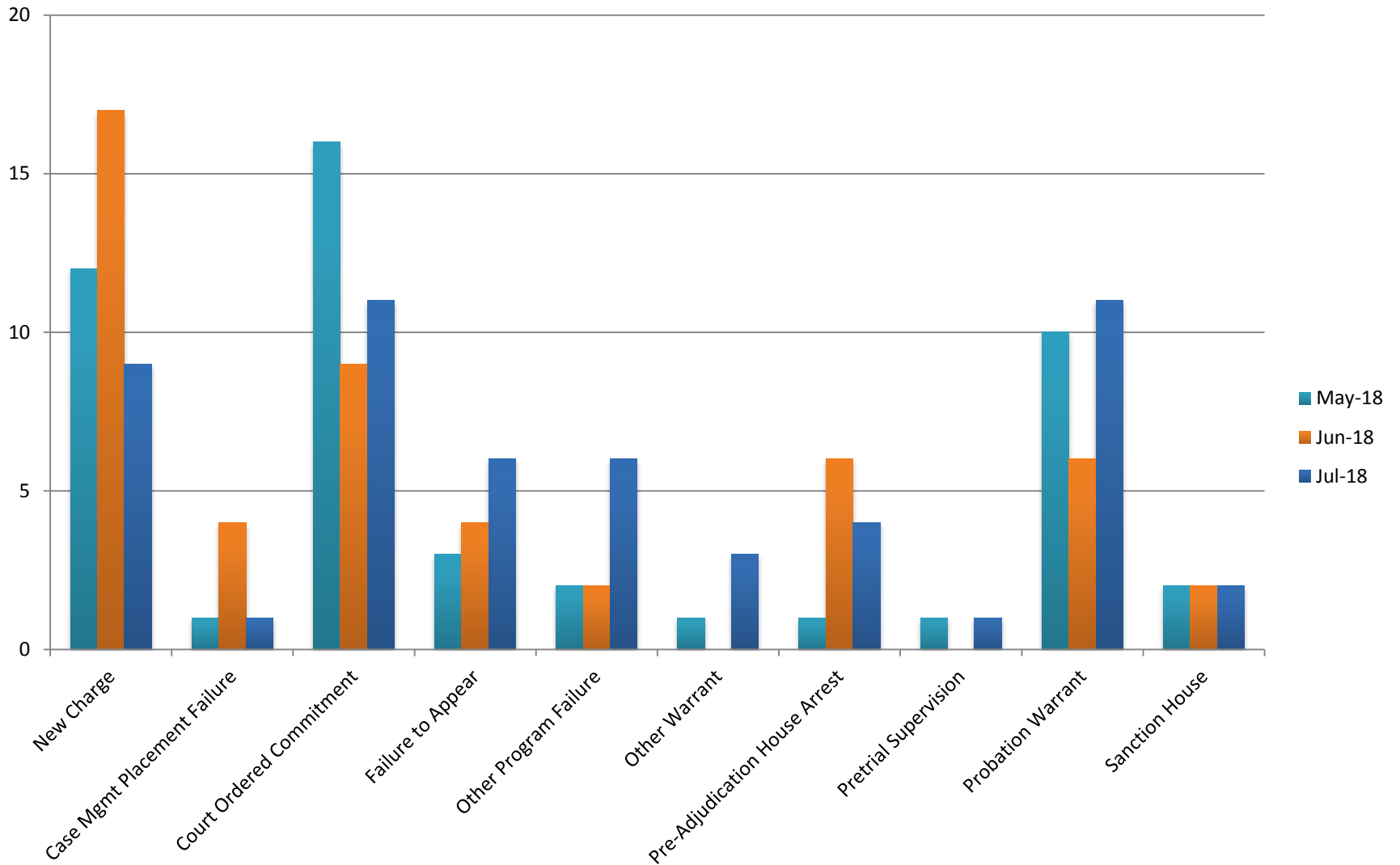
Year July July YTD Avg.

2013	48	55
2014	53	61
2015	64	64
2016	55	60
2017	55	49
2018	56	51

JDF ADP
July 2013 - present



Reason for JDF Admits



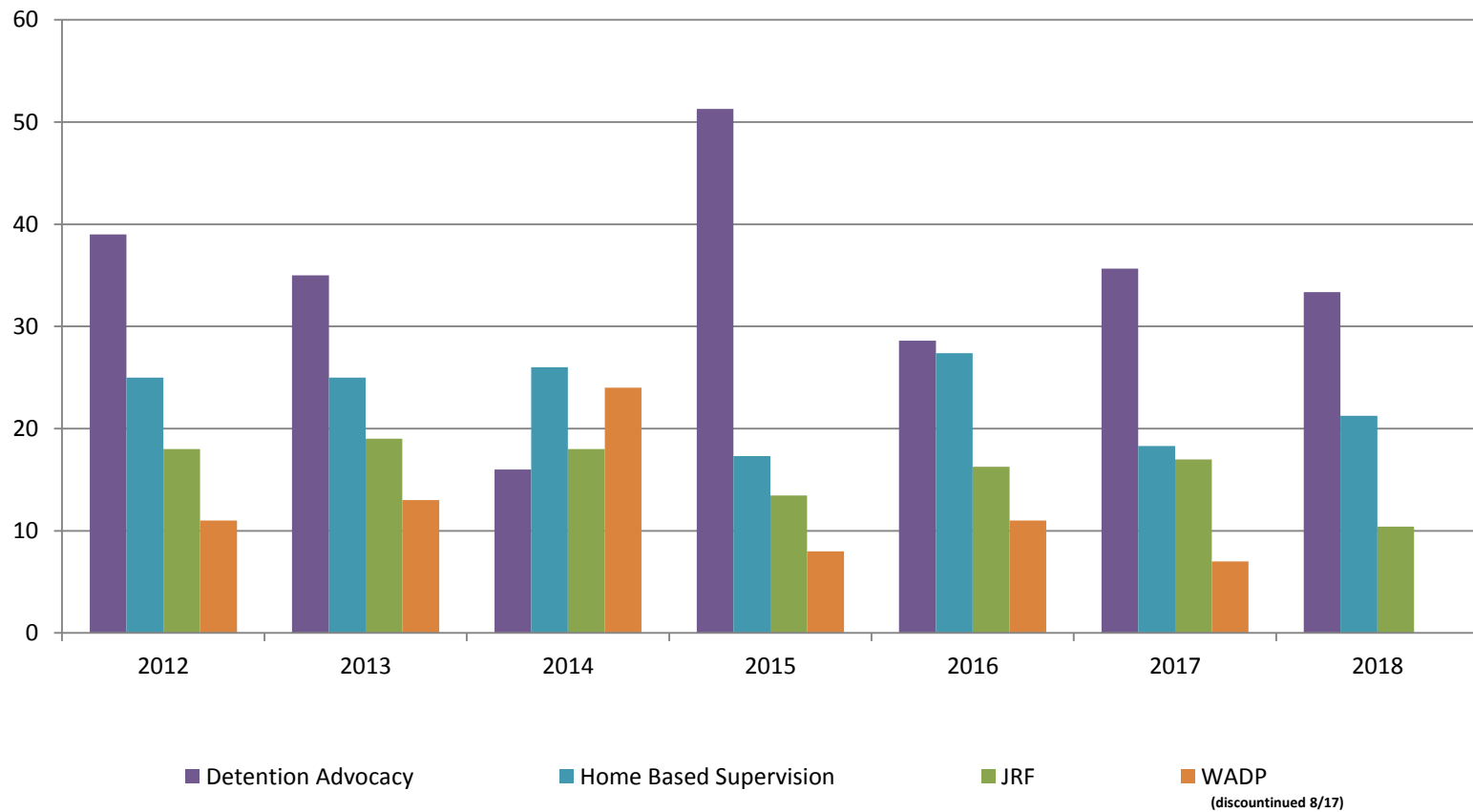
Reason for JDF Admits

Reason	Jan 2018	Feb 2018	March 2018	April 2018	May 2018	June 2018	July 2018
New Charges	11	11	20	11	12	17	9
Case Management Placement Failures	0	0	0	0	1	4	1
Court Ordered Commitment	4	5	10	8	16	9	11
Failure to Appear	5	4	4	9	3	4	6
Other Program Failure	0	2	6	2	2	2	6
Other Warrant	4	6	4	1	1	0	3
Pre-Adjudication House Arrest	2	7	6	3	1	6	4
Pretrial Supervision	1	2	3	0	1	0	1
Probation Warrant	6	4	10	9	10	6	22
Sanction House	7	0	4	3	2	2	2



Juvenile Detention Alternatives

ADP: July 2012 - Present



Juvenile Detention Services

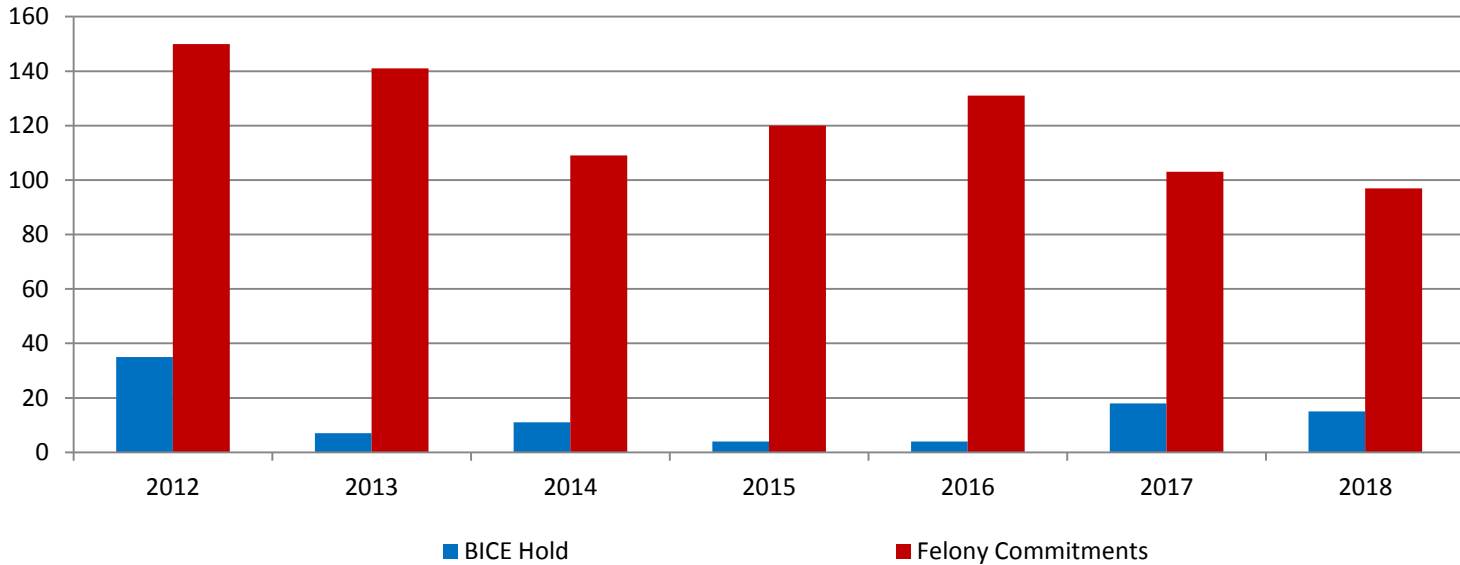
July ADP	2015	2016	2017	2018
Juvenile Detention Facility	64	55	55	56
Juvenile Residential Facility	13	16	17	10
Home Based Supervision	17	27	18	21
Detention Advocacy Case Management Services	51	29	36	33
Weekend Alternative Detention Program (total)	8	11	7	0

July YTD AVERAGE	2015	2016	2017	2018
Juvenile Detention Facility	64	60	49	51
Juvenile Residential Facility	16	16	15	12
Home Based Supervision	21	26	22	26
Detention Advocacy Case Management Services	46	33	35	32
Weekend Alternative Detention Program	20	15	15	0



Monthly Jail Snapshot: July 31, 2018

July 2012 - Present

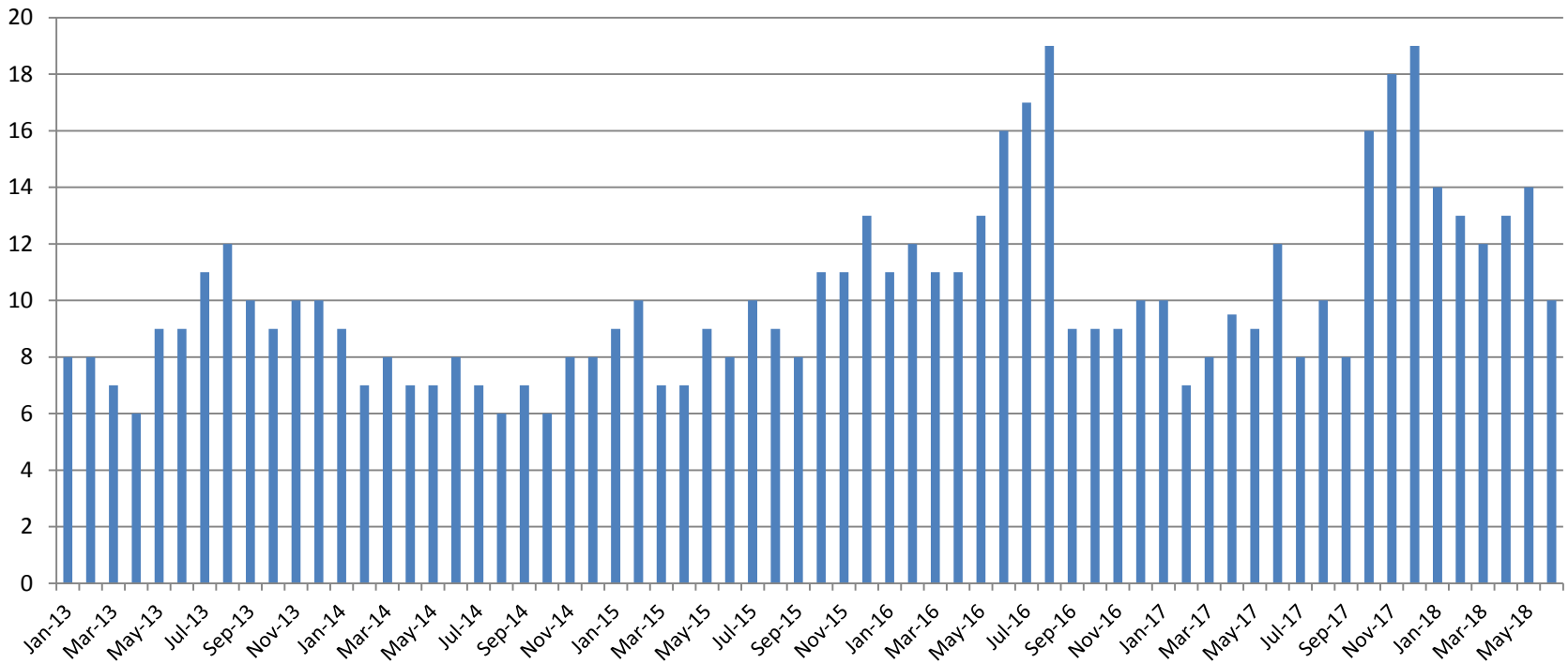


BICE Hold	2013	2014	2015	2016	2017	2018
July	7	11	4	4	18	15

Felony Commitments	2013	2014	2015	2016	2017	2018
July	141	109	120	131	103	97

(data obtained from SG CO DIO)

Journal Entry Completion (Average Days) January 2013-Present



	June	2013	2014	2015	2016	2017	2018
Avg. Days		9	8	8	16	12	10
YTD Avg.		8	8	8	12	9	12.7

