

# Criminal Justice Coordinating Council

## Population Report & Program Trends

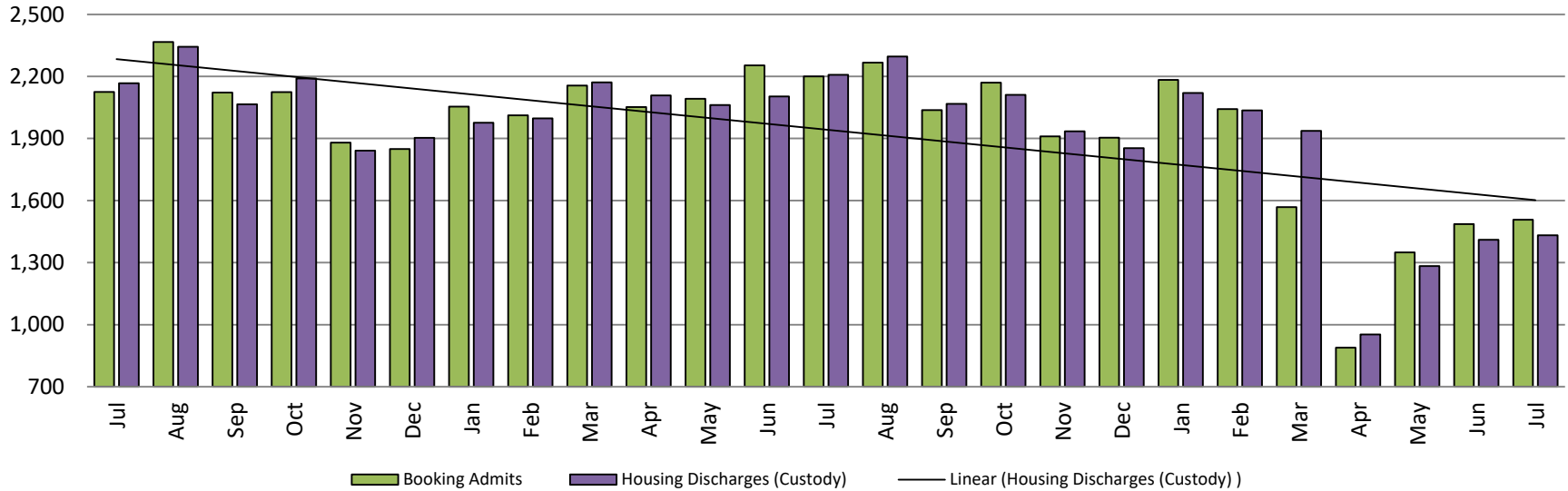
August 2020



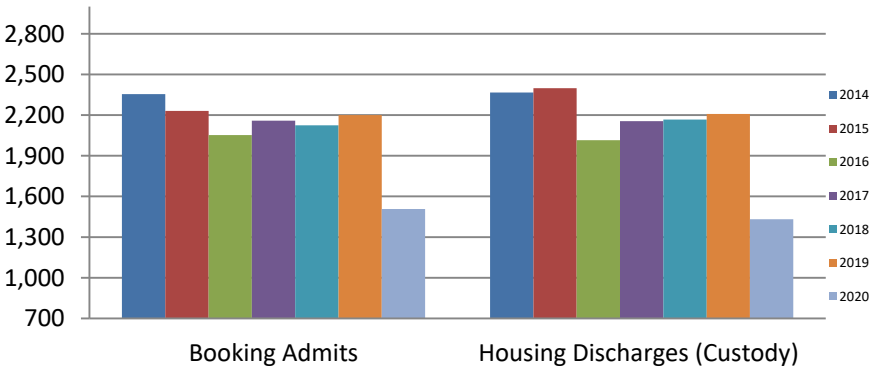
*Sedgwick County...*  
*working for you*

# Detention Facility

## Booking Admits & Housing Discharges from Custody July 2018 - present

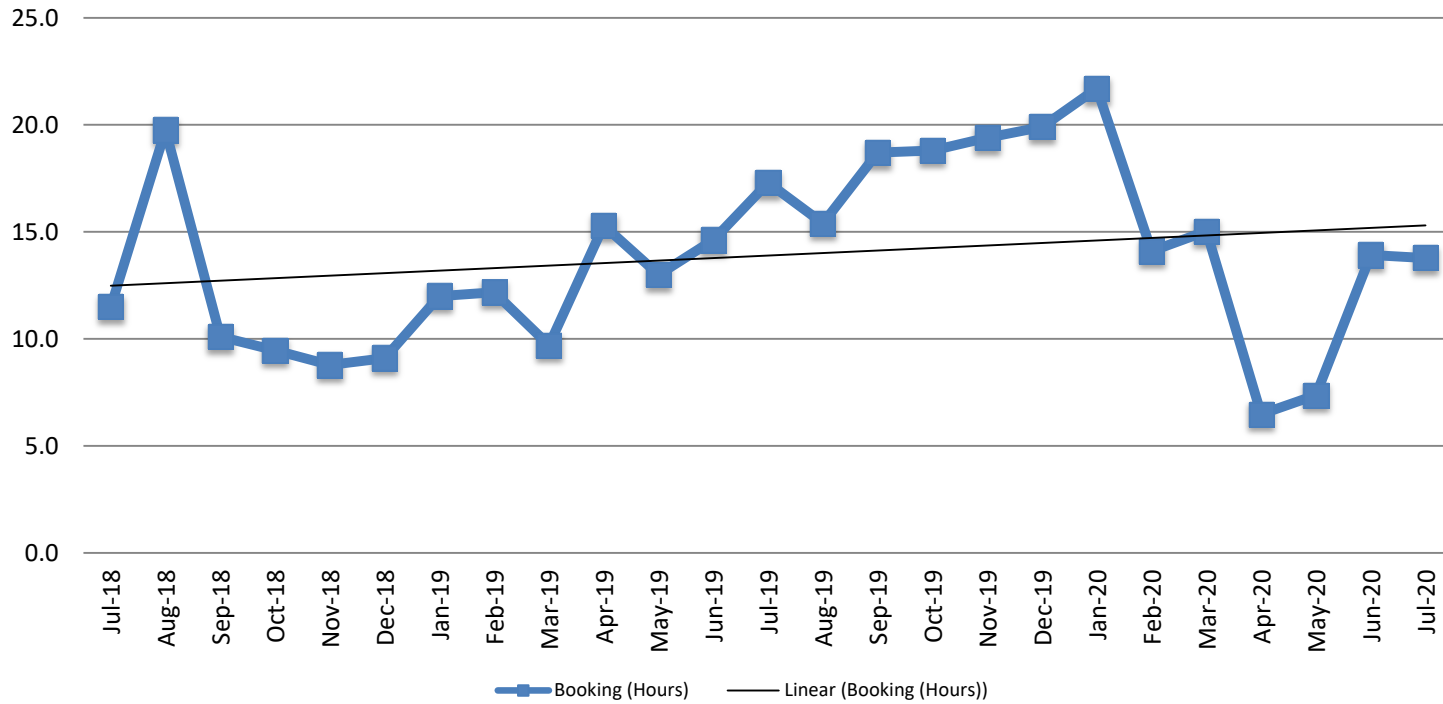


### Bookings Year over Year: Month of July



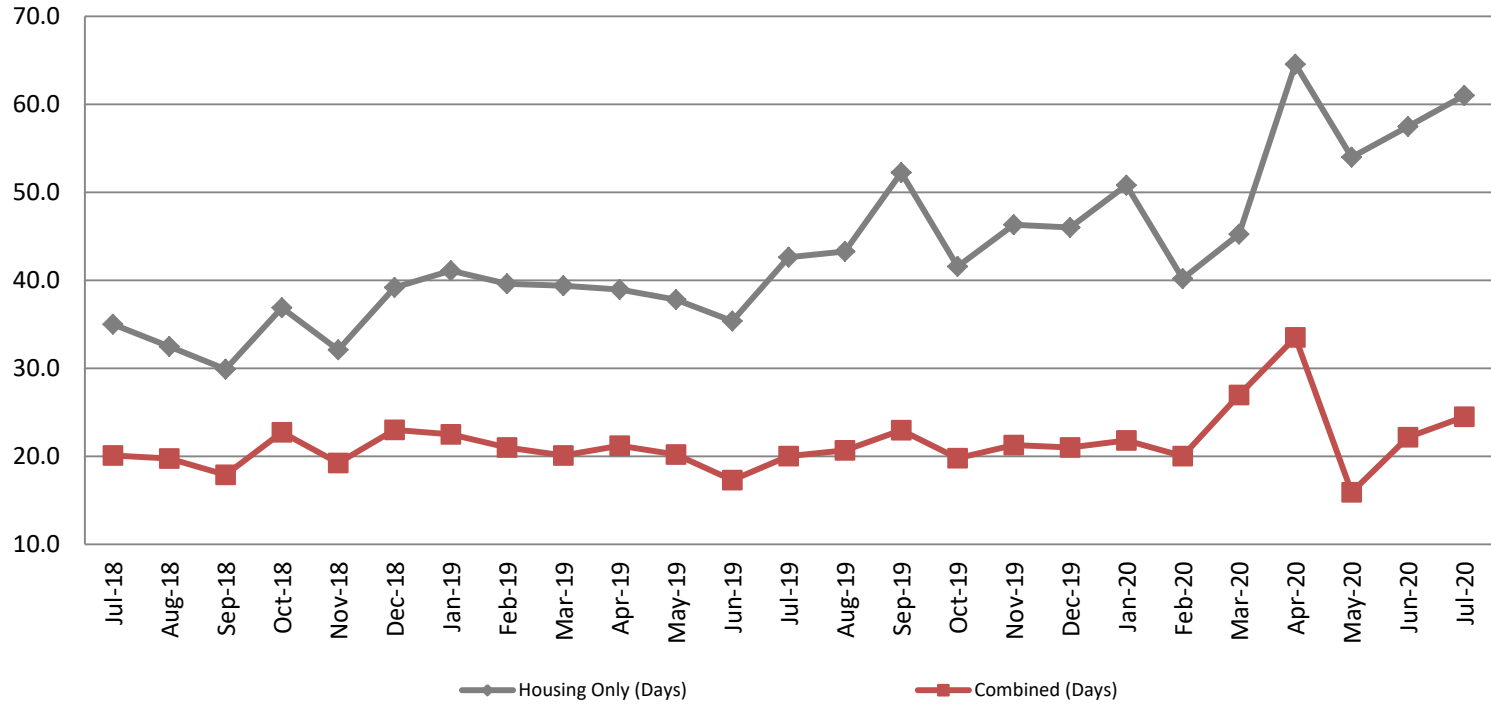
Bookings July	Housing Discharges July
2018: 2,125	2018: 2,167
2019: 2,200	2019: 2,208
2020: 1,507	2020: 1,432

## Average Length of Stay: Booking (Hours) July 2018 - present



July	July YTD Average
2018: 11.5	2018: 9.6
2019: 17.3	2019: 13.4
2020: 13.8	2020: 13.2

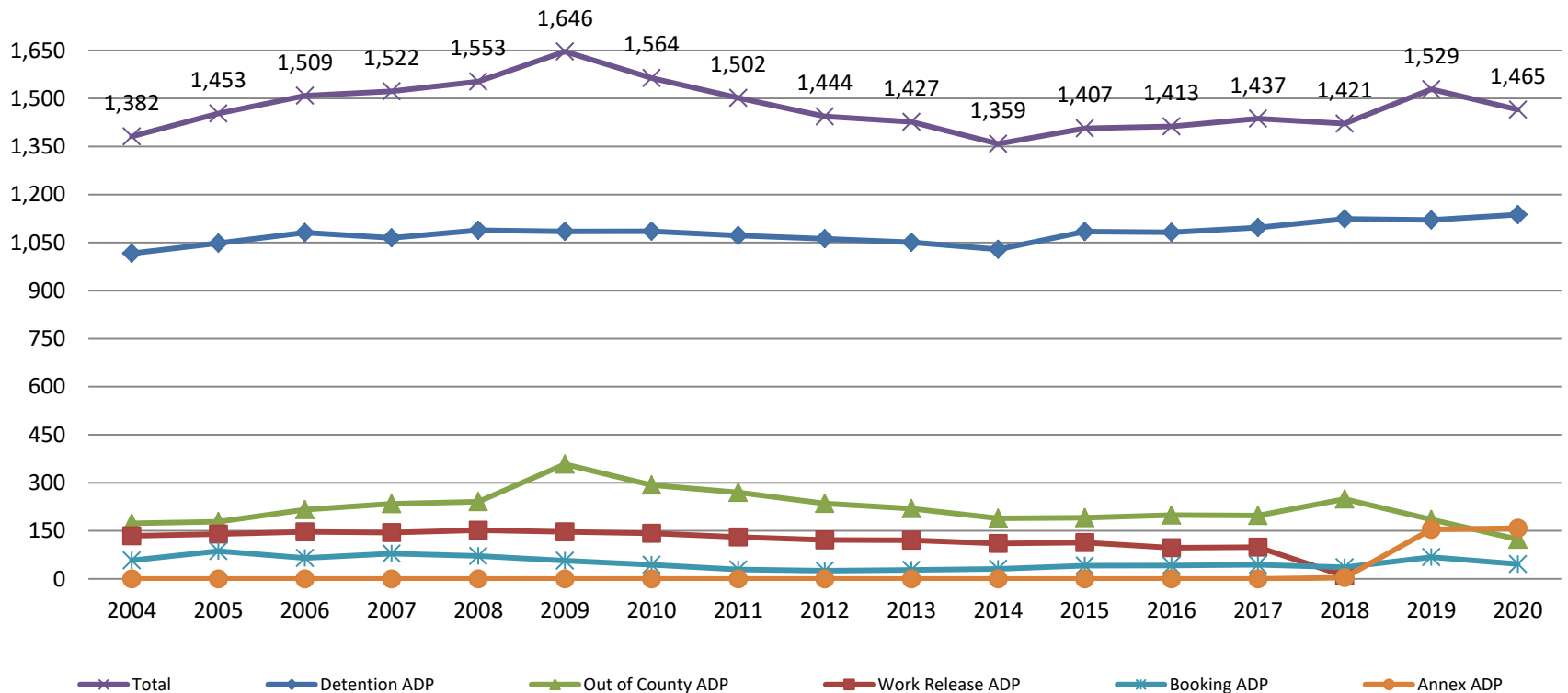
## Average Length of Stay: Housing & Combined (Days) July 2018 - present



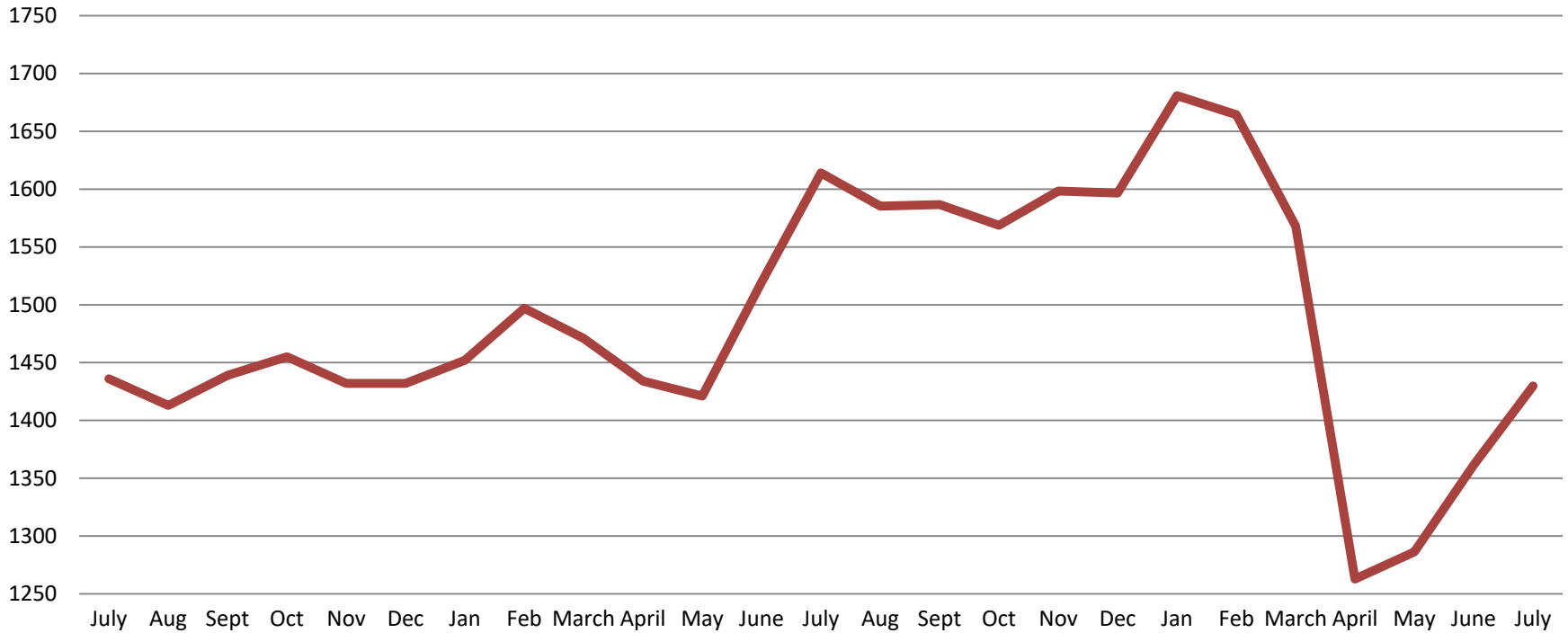
Month Year	Housing Only	Housing YTD AVG	Combined Days	Combined YTD AVG
July 2018	35.0	35.1	20.1	21.3
July 2019	42.6	39.3	20.0	20.3
July 2020	61.0	53.3	24.5	23.6

# Jail: Annual Average Daily Population (ADP)

**TRENDS: Booking, Detention, Work Release, & Out of County Annual ADP:  
2004 - present**

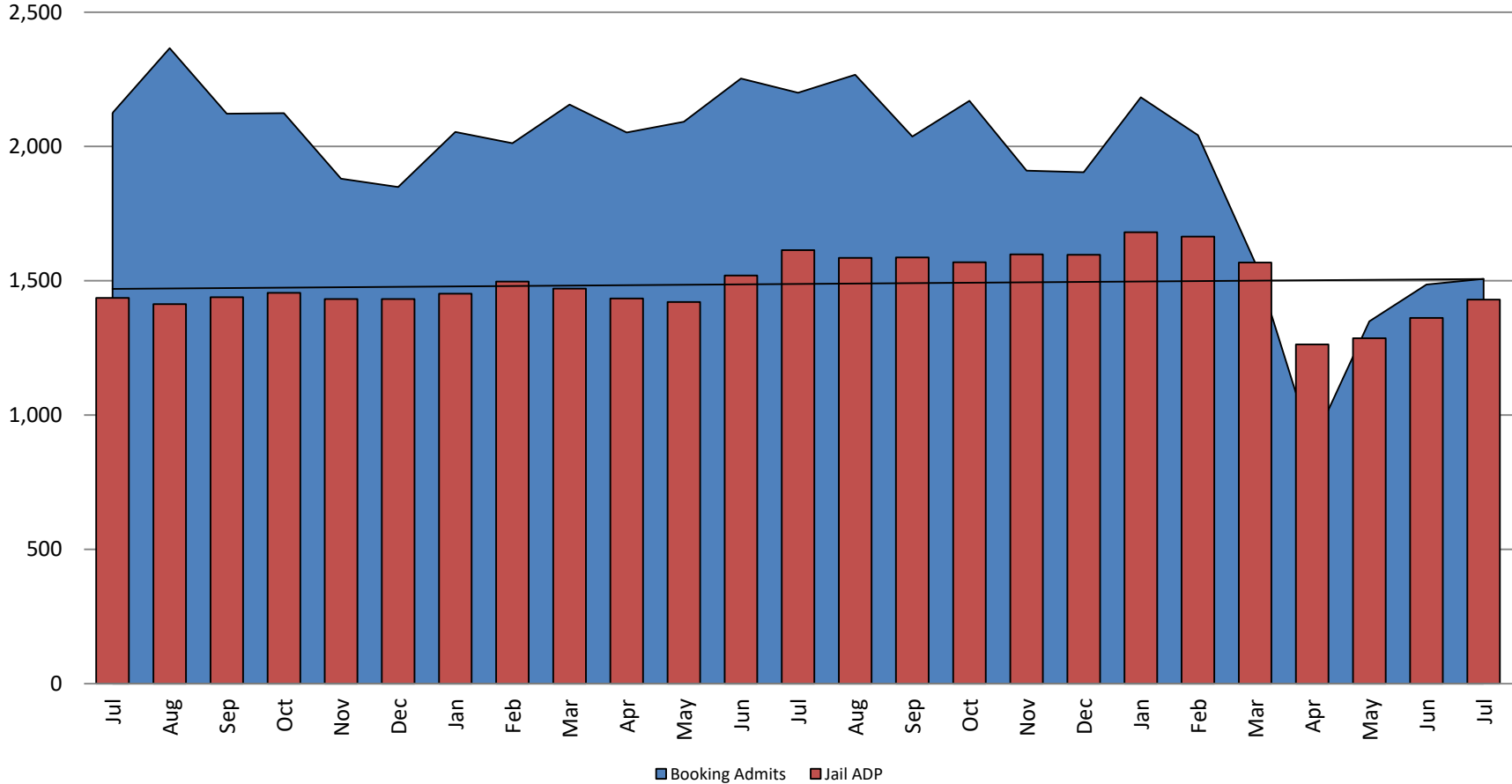


## TOTAL MONTHLY ADP: JAIL (Booking, Detention Facility, Annex, & Out of County) July 2018 - present



July 2018	July 2019	July 2020
1,436	1,614	1,430

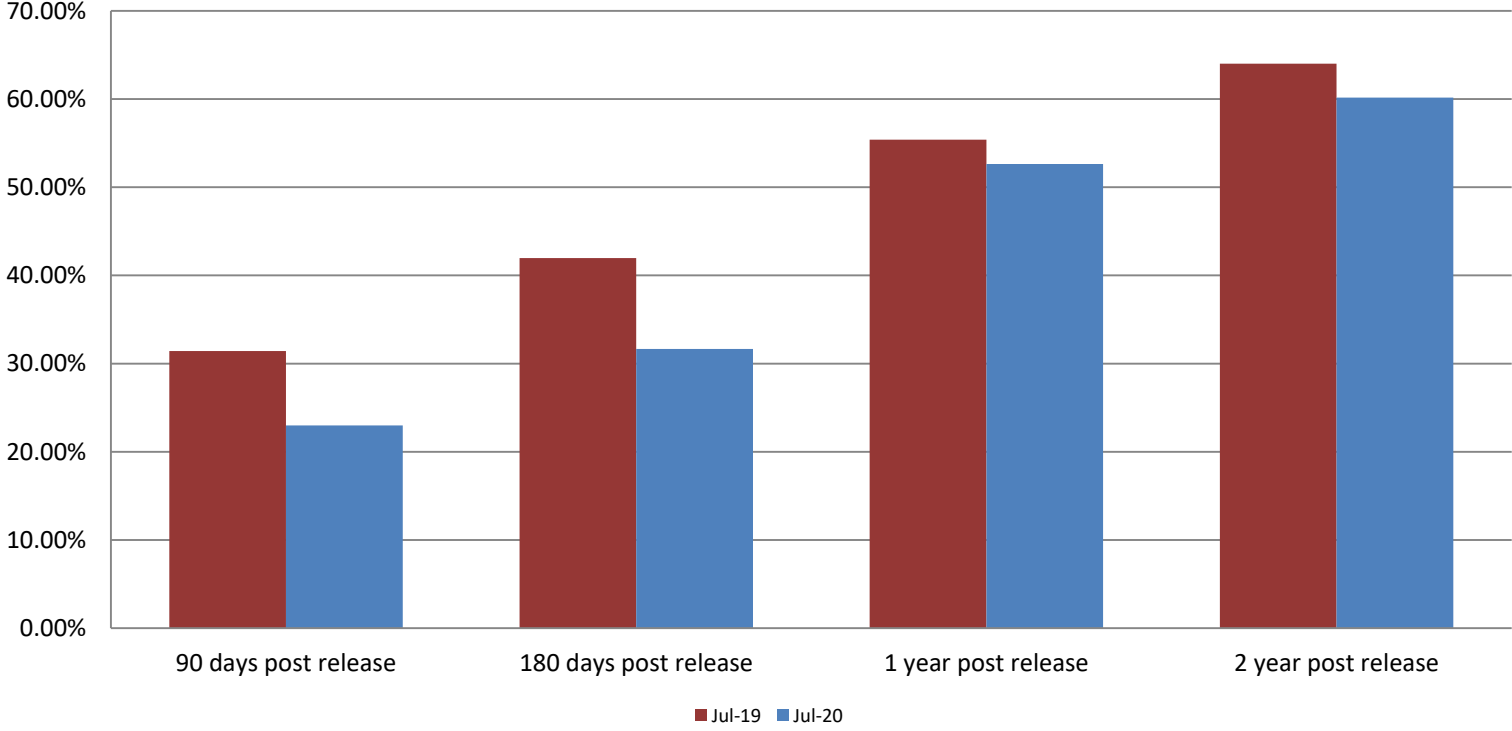
## Booking Admits & Total Monthly ADP (Jail): July 2018 - present



Jail includes individuals in booking, detention, work release and out-of county (combined)  
(data obtained from detention facility)



# Percent of released inmates rearrested July

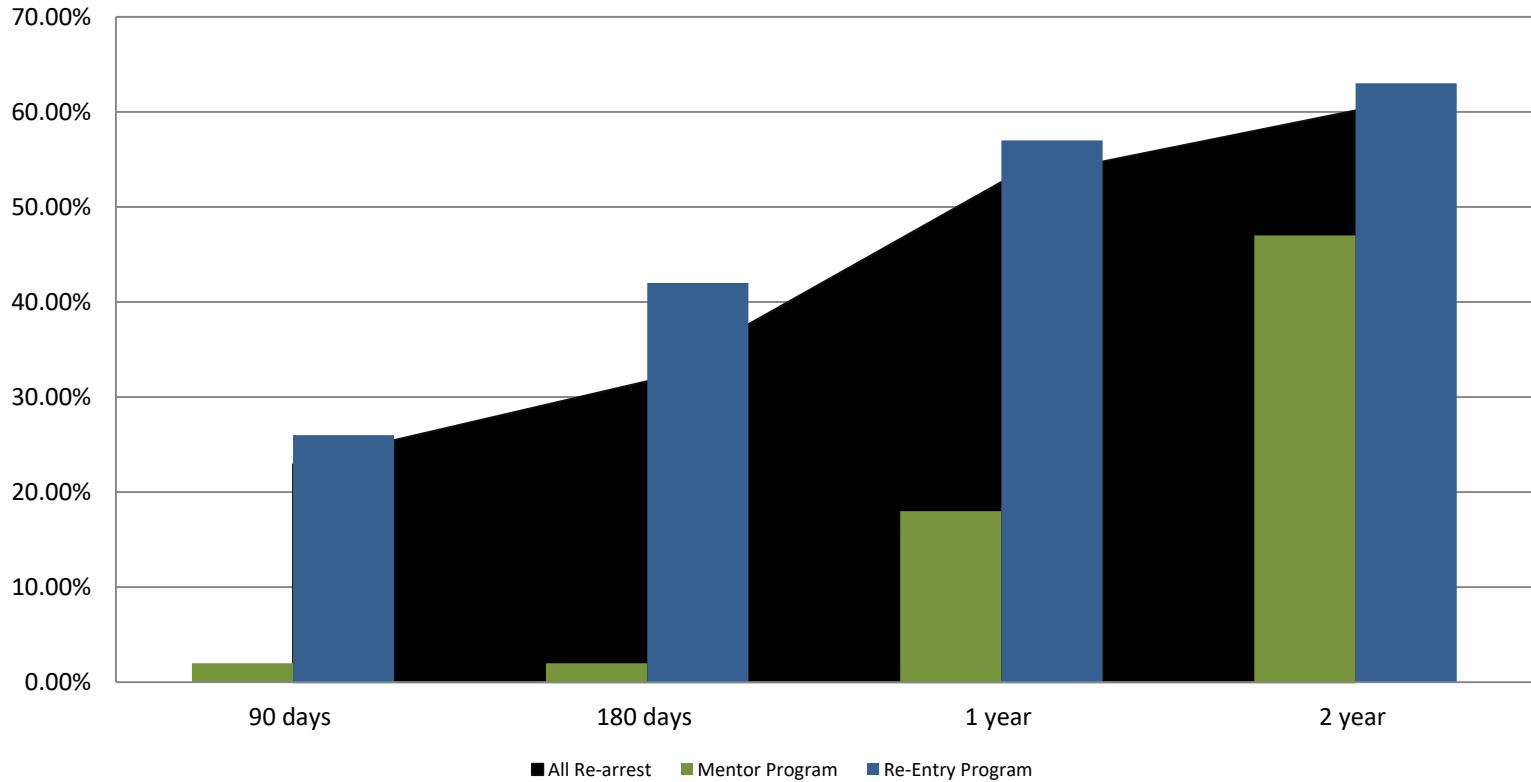


Month Year	90 Days	180 Days	1 Year	2 Years
July 2019	31.42%	41.97%	55.40%	64.01%
July 2020	22.99%	31.67%	52.63%	60.15%





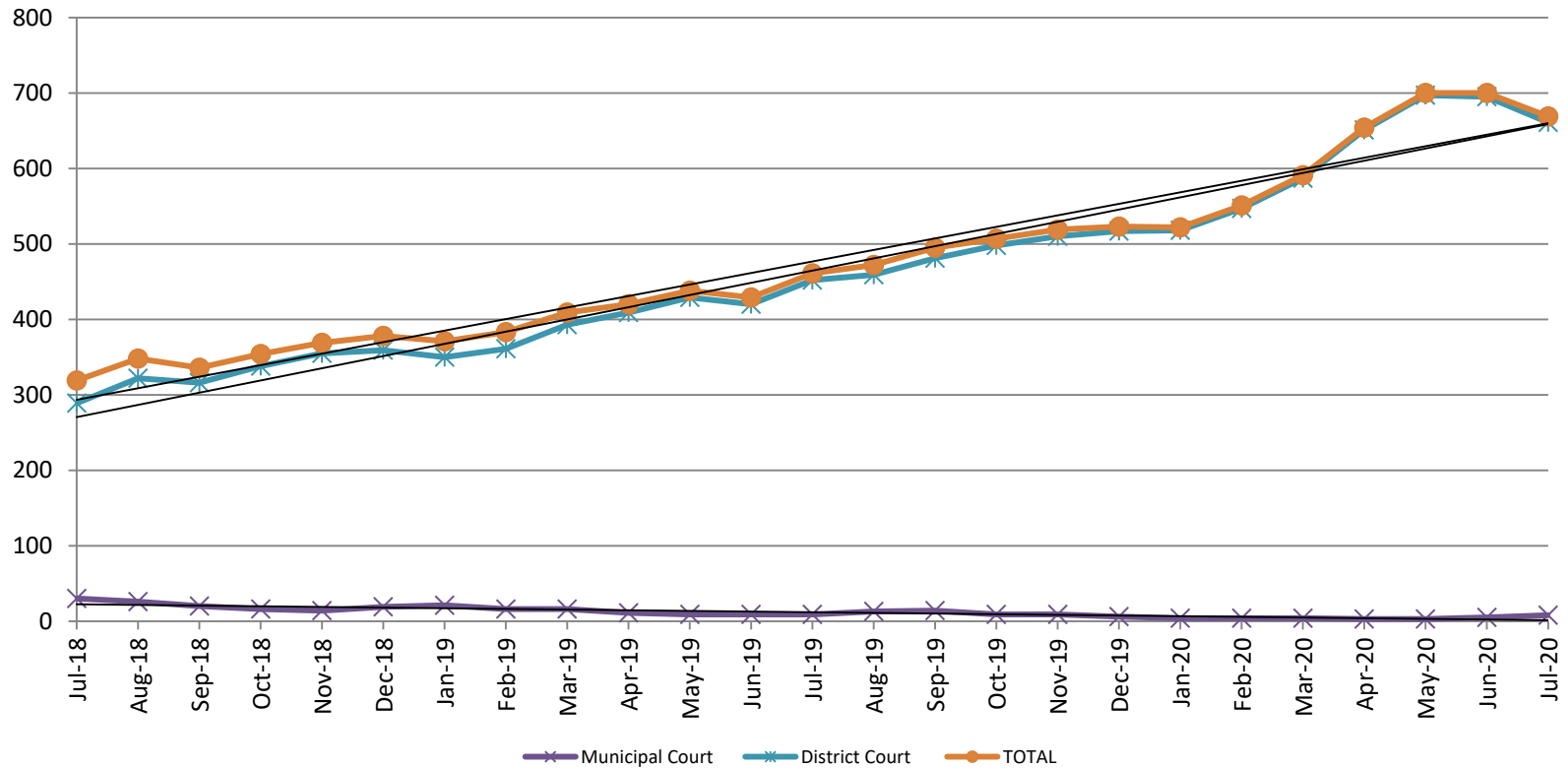
## Recidivism by Programs July 2020



July 2020	90 Days	180 Days	1 year	2 years
All Re-arrests	22.99%	31.67%	52.63%	60.15%
Mentor Program	2%	2%	18%	47%
Re-Entry Program	26%	42%	57%	63%



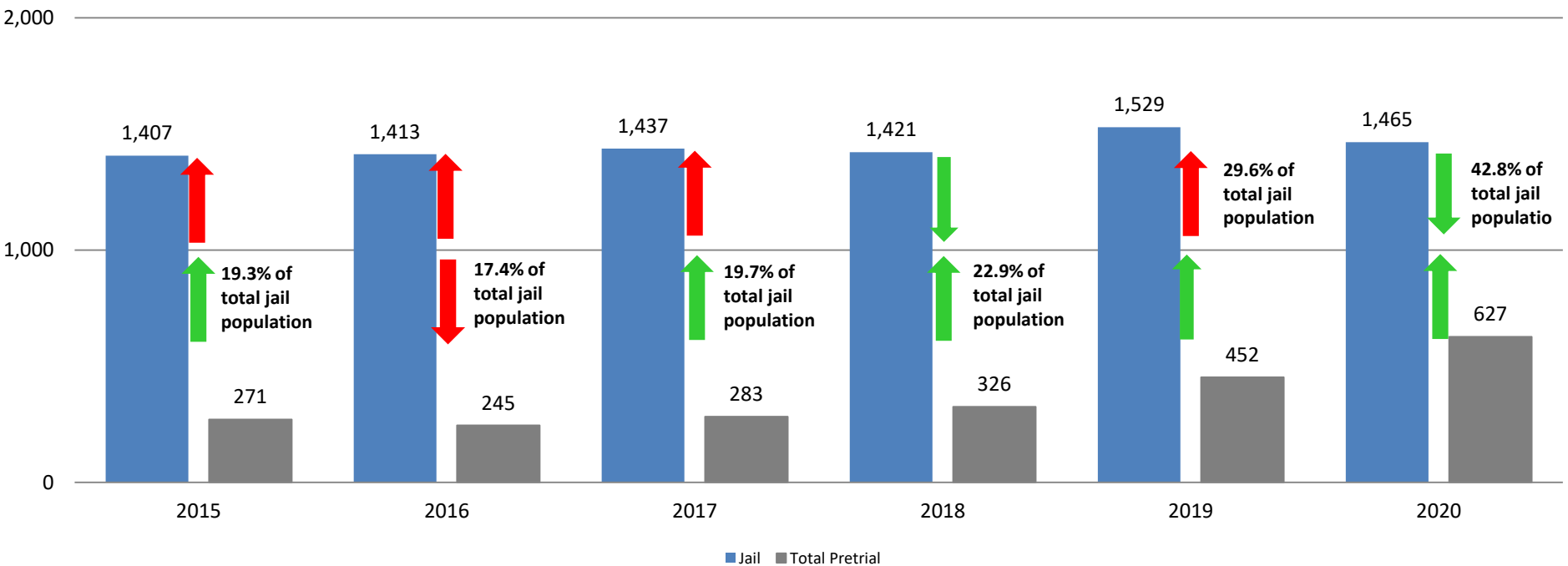
## Pretrial Services Program (PSP) Monthly ADP: July 2018 - present



July	2018 ADP	2019 ADP	2020 ADP	2018 YTD Avg.	2019 YTD Avg.	2020 YTD Avg.
Muni. Court	30	9	8	28	13	4
Dist. Court	289	452	661	275	402	622
<b>Total</b>	<b>319</b>	<b>461</b>	<b>669</b>	<b>303</b>	<b>416</b>	<b>627</b>

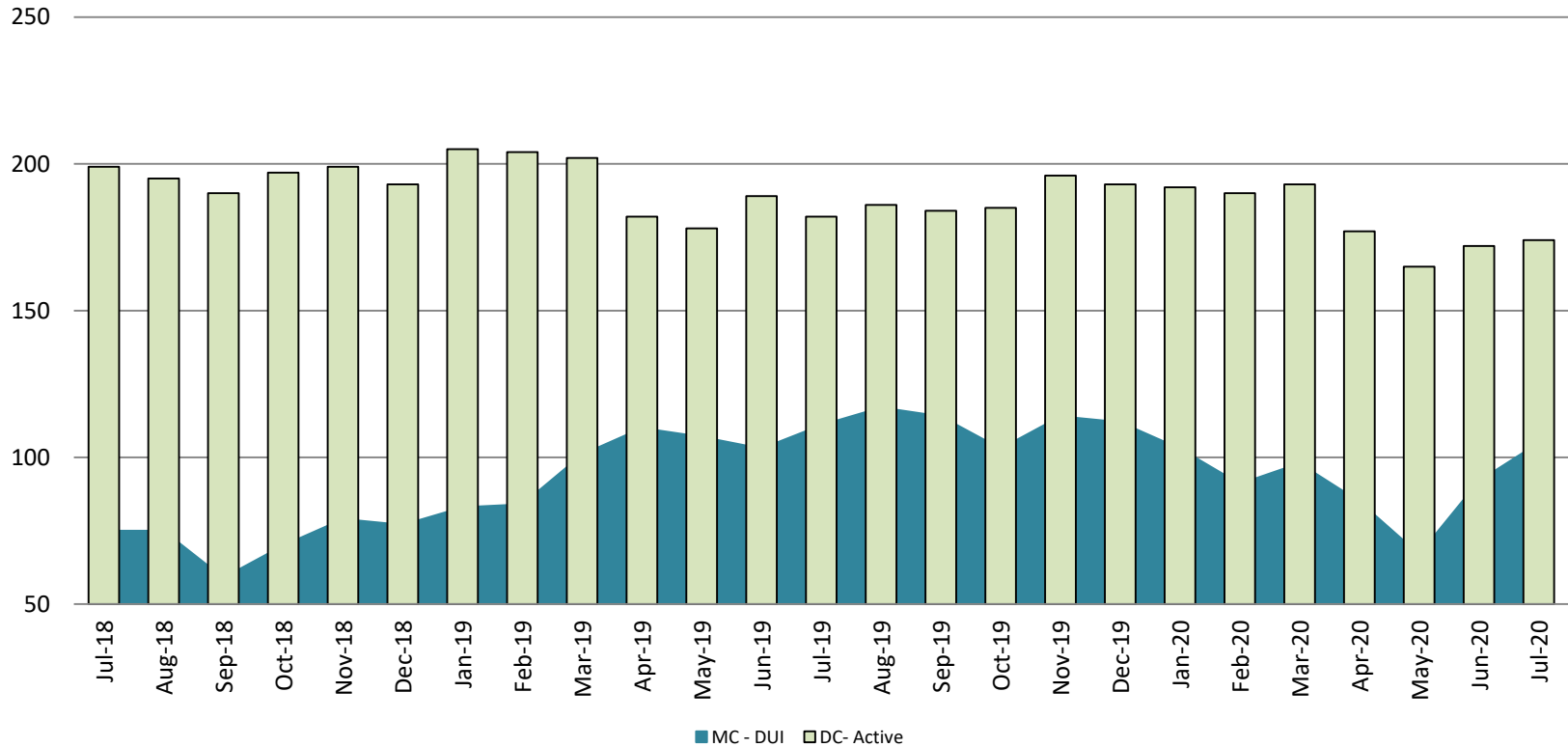
# Correlation: Total & PSP

## Total Annual ADP: 2015 - present



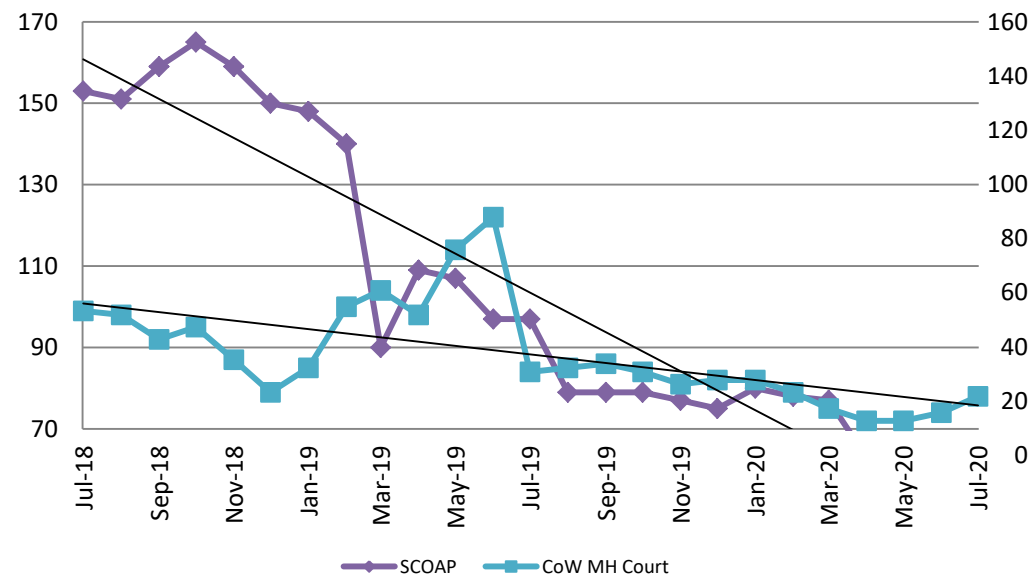
# Diversion - Active Caseload

July 2018 - present

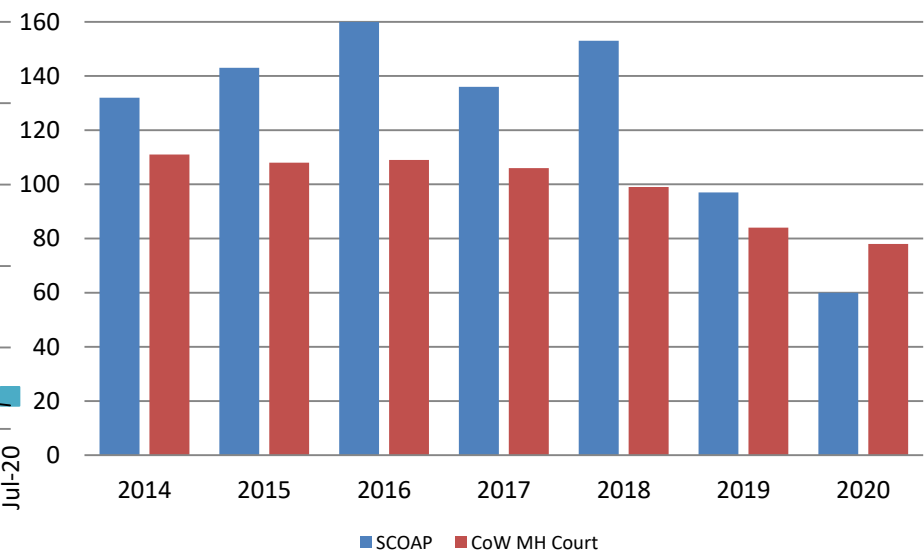


July	2018	2019	2020	2018 YTD Avg.	2019 YTD Avg.	2020 YTD Avg.
Muni. Court- DUI	75	111	105	76	100	92
Dist. Court- Active	199	182	174	199	192	180

## Mental Health - ADP July 2018 - present

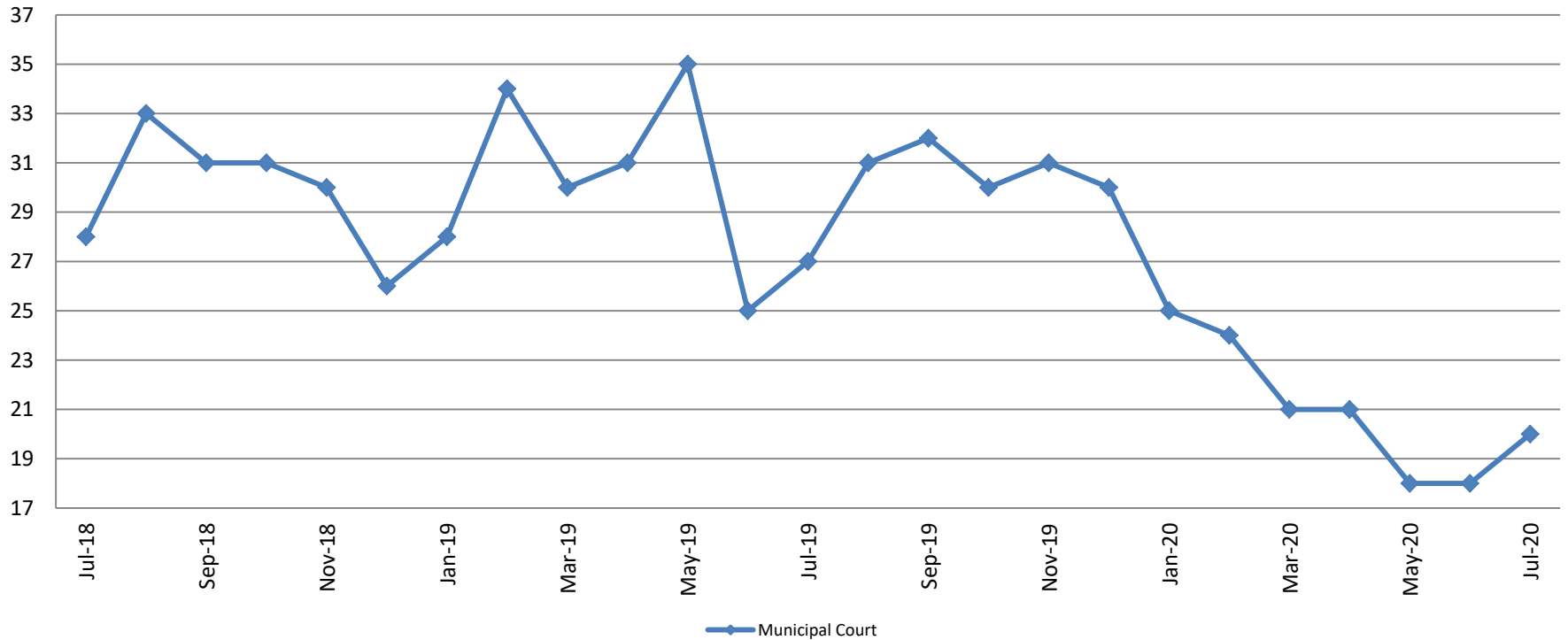


## Mental Health ADP Year over Year - July



July	2018 ADP	2019 ADP	2020 ADP	2018 YTD Avg.	2019 YTD Avg.	2020 YTD Avg.
SCOAP	153	97	60	140	113	67
MH Court	99	84	78	100	101	76

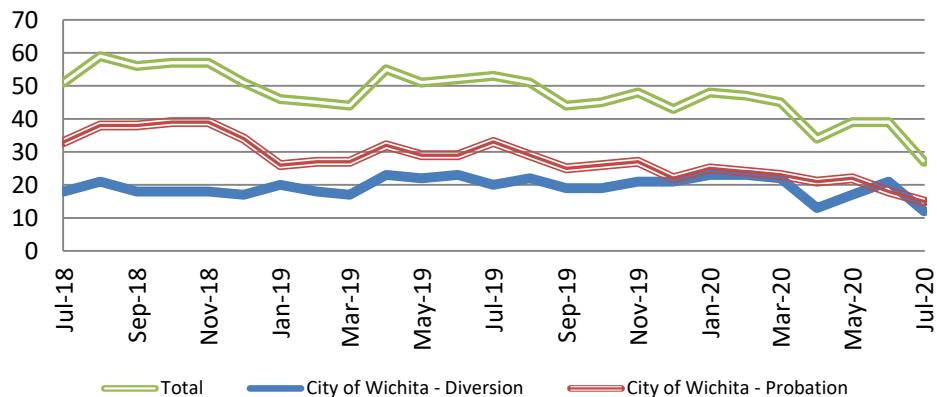
## Day Reporting - Active Caseload July 2018 - present



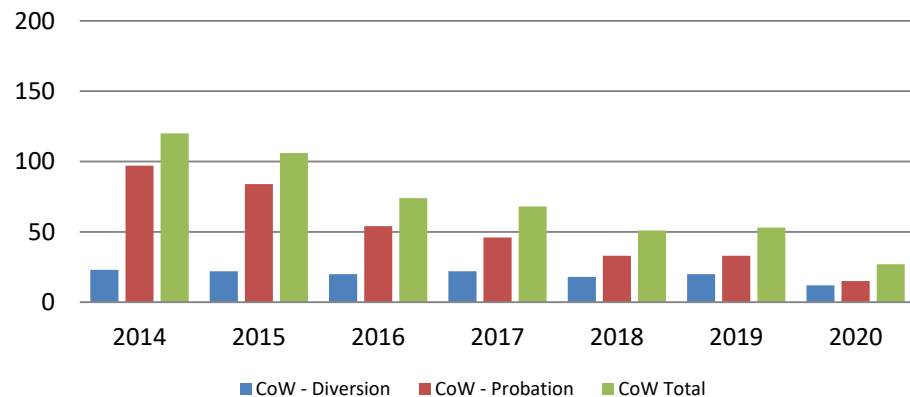
July	2015	2016	2017	2018	2019	2020
Muni. Court	68	40	45	28	27	20
Muni. Court YTD Avg.	72	46	35	35	30	21



## Drug Court - City of Wichita ADP: July 2018 - present



## Drug Court- City of Wichita Year over Year - July

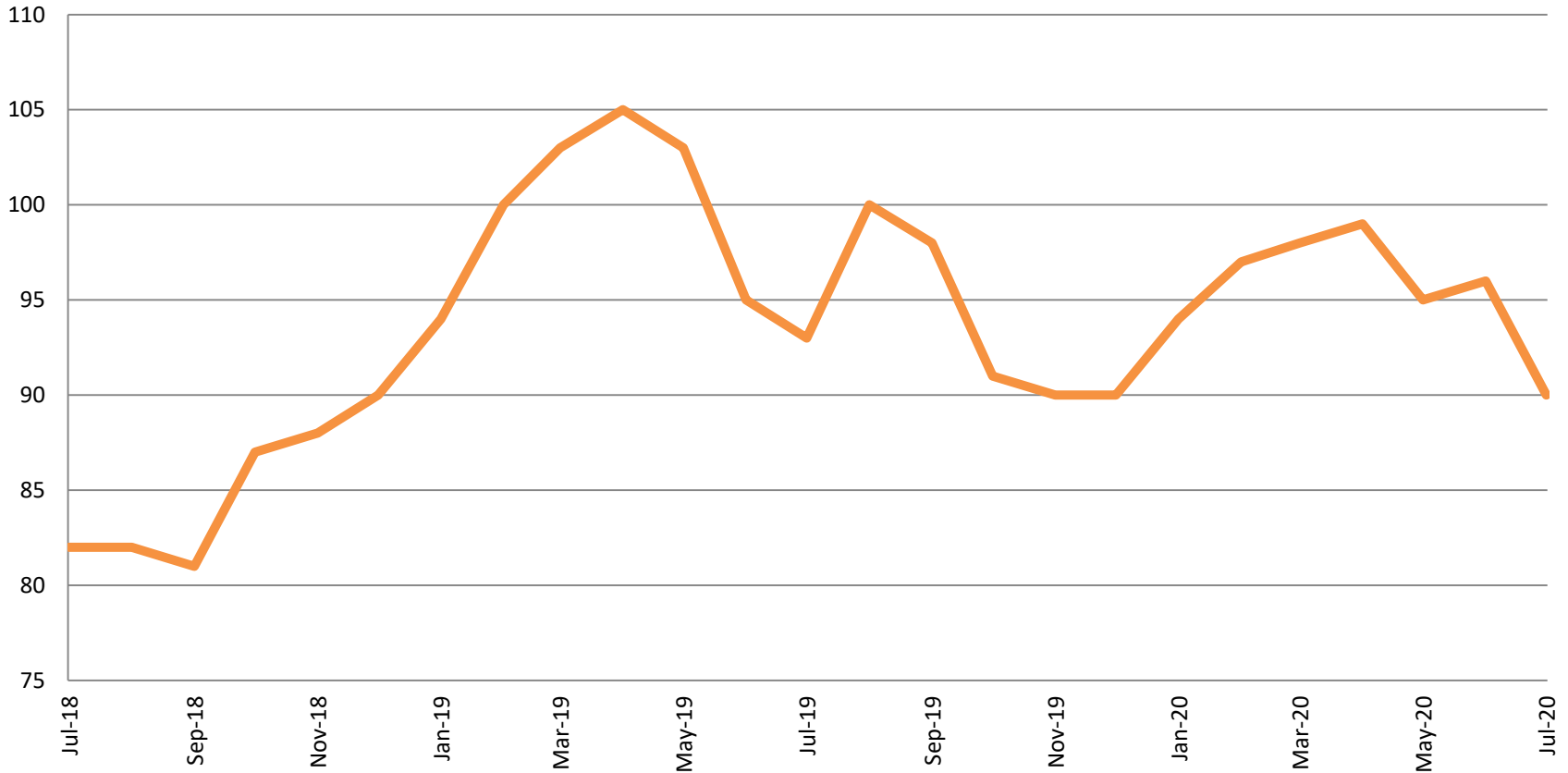


July	2018	2019	2020
Diversion	18	20	12
Probation	33	33	15
Total	51	53	27



# Drug Court - Sedgwick County

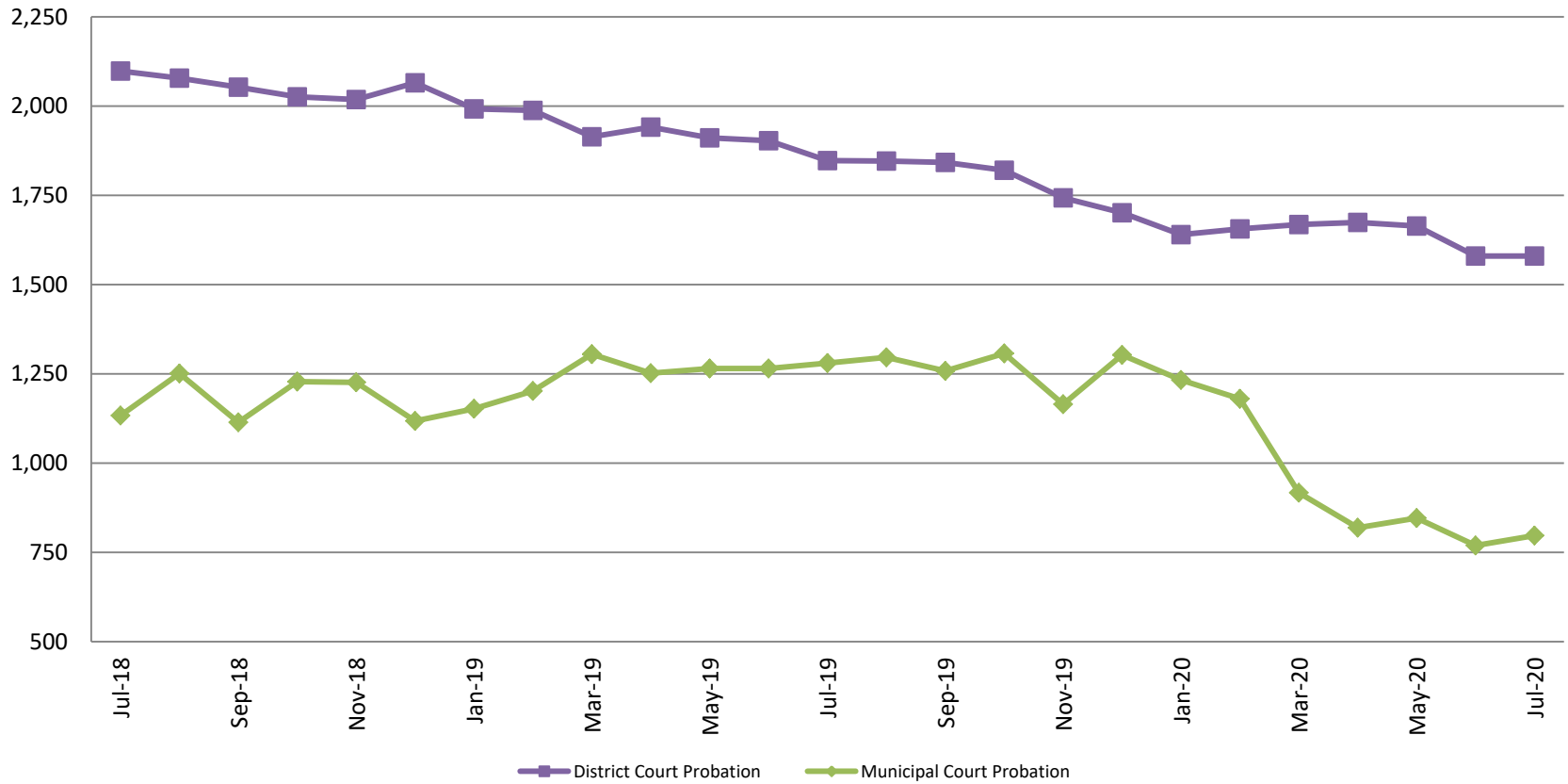
## ADP: July 2018 - present



	<b>July</b>	<b>2018</b>	<b>2019</b>	<b>2020</b>
<b>Sedg. Co. ADP</b>	82	93	90	
<b>YTD Avg.</b>	85	99	96	



## Probation - Active Caseloads July 2018 - present

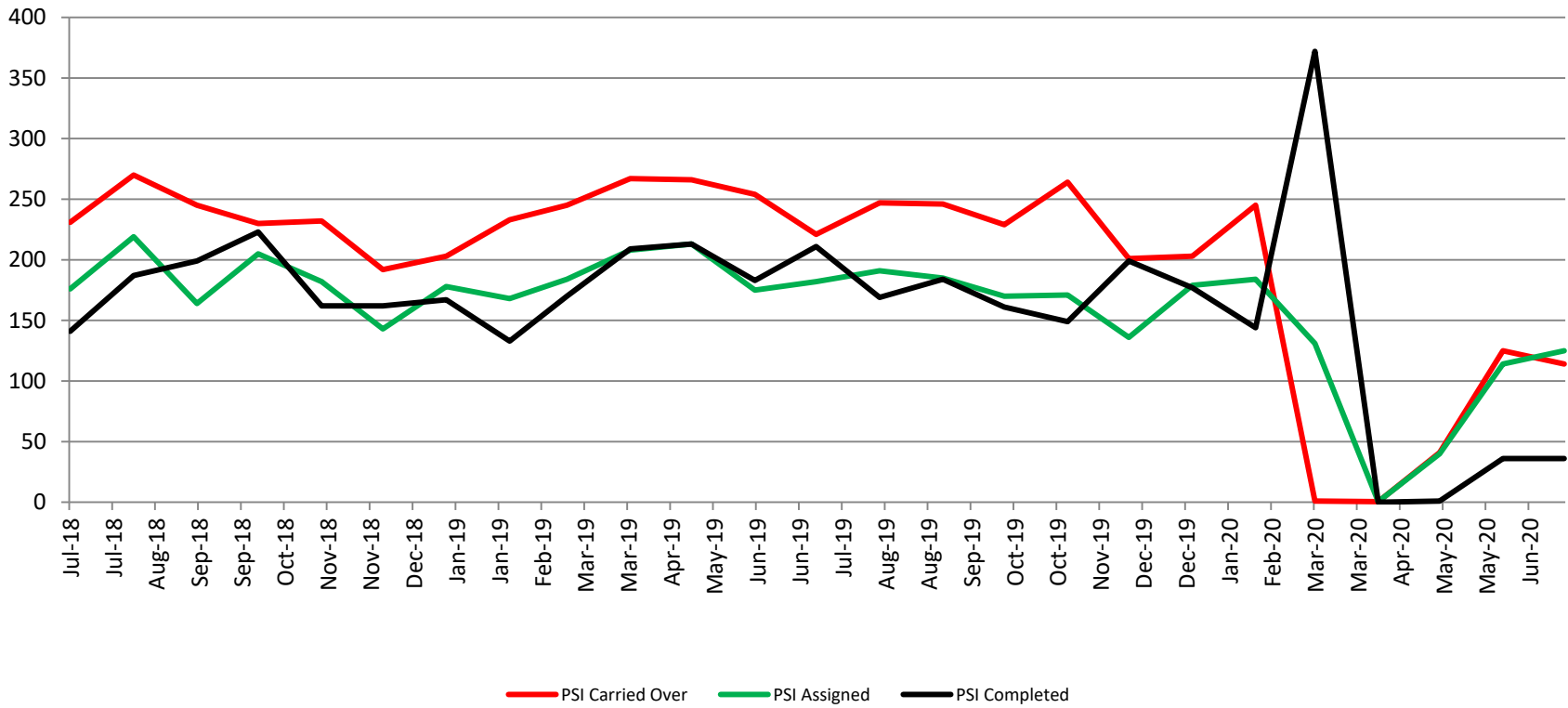


July	2018	2019	2020	2018 YTD Avg.	2019 YTD Avg.	2020 YTD Avg.
Dist. Court Probation	2,098	1,847	1,580	2,126	1,928	1,637
Muni. Court Probation	1,133	1,280	797	1,221	1,246	937



# District Court Probation: Pre-Sentence Investigation

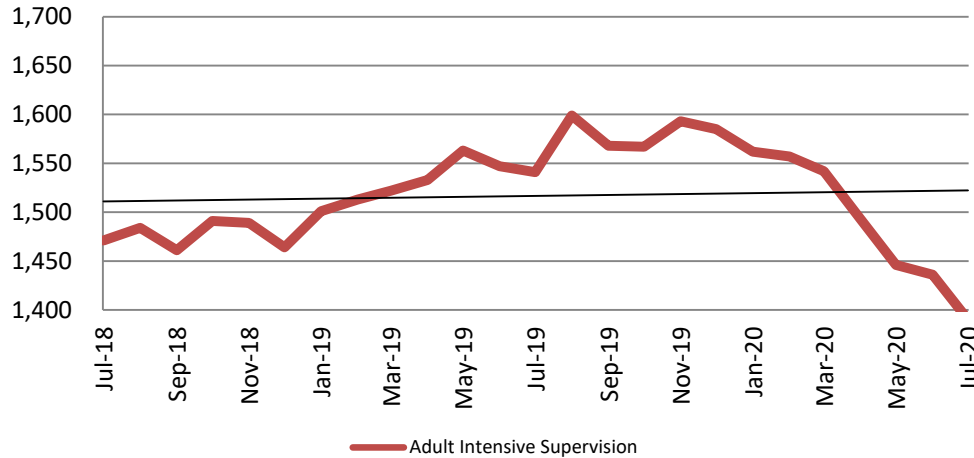
## July 2018 - present



<b>July</b>	<b>2018</b>	<b>2019</b>	<b>2020</b>
Carried Over	231	221	114
Assigned	176	182	125
Completed	141	211	36

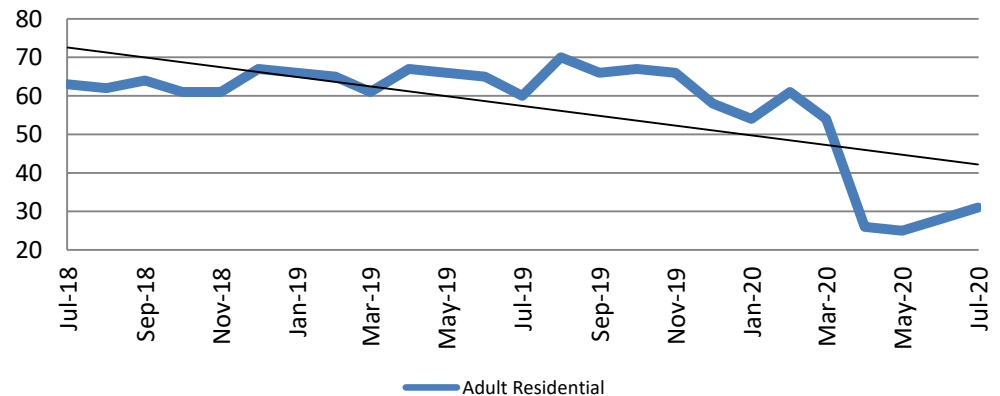
# Community Corrections

**Adult Intensive Supervision Probation (AISP):  
ADP July 2018- present**



Year	July	July YTD Avg.
2018	1,471	1,468
2019	1,541	1,531
2020	1,390	1,489

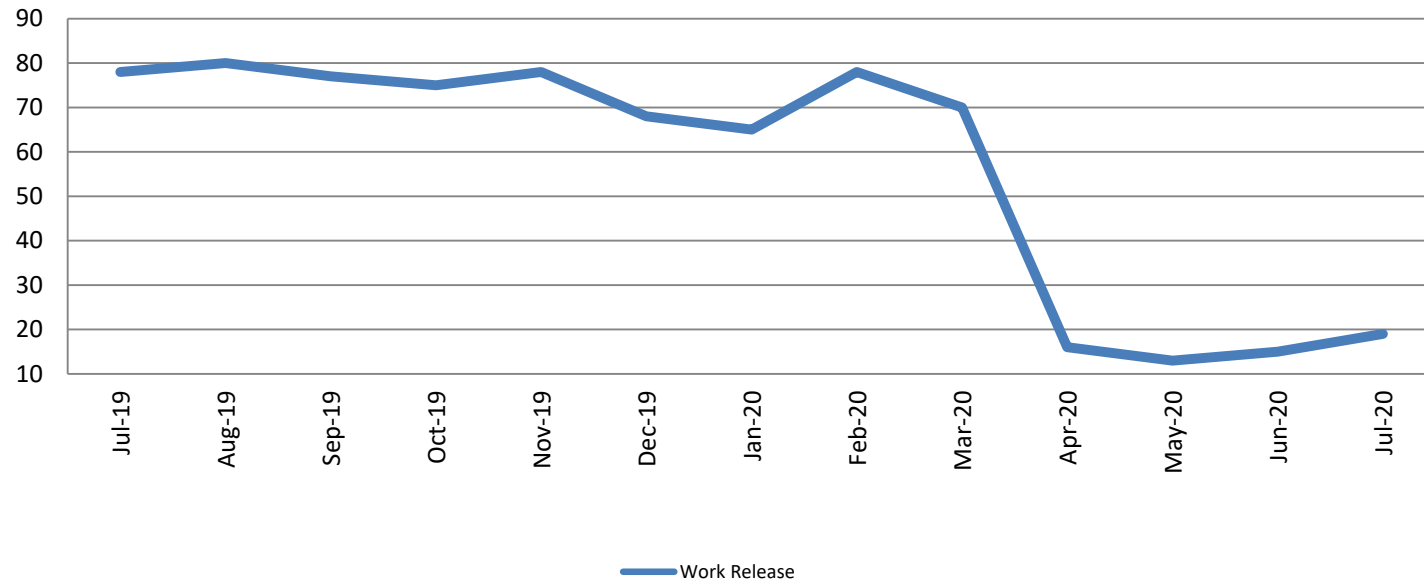
**Adult Residential: ADP  
July 2018 - present**



Year	July	July YTD Avg.
2018	63	56
2019	60	64
2020	31	40

# Community Corrections

**Work Release: ADP  
July 2019 - present**

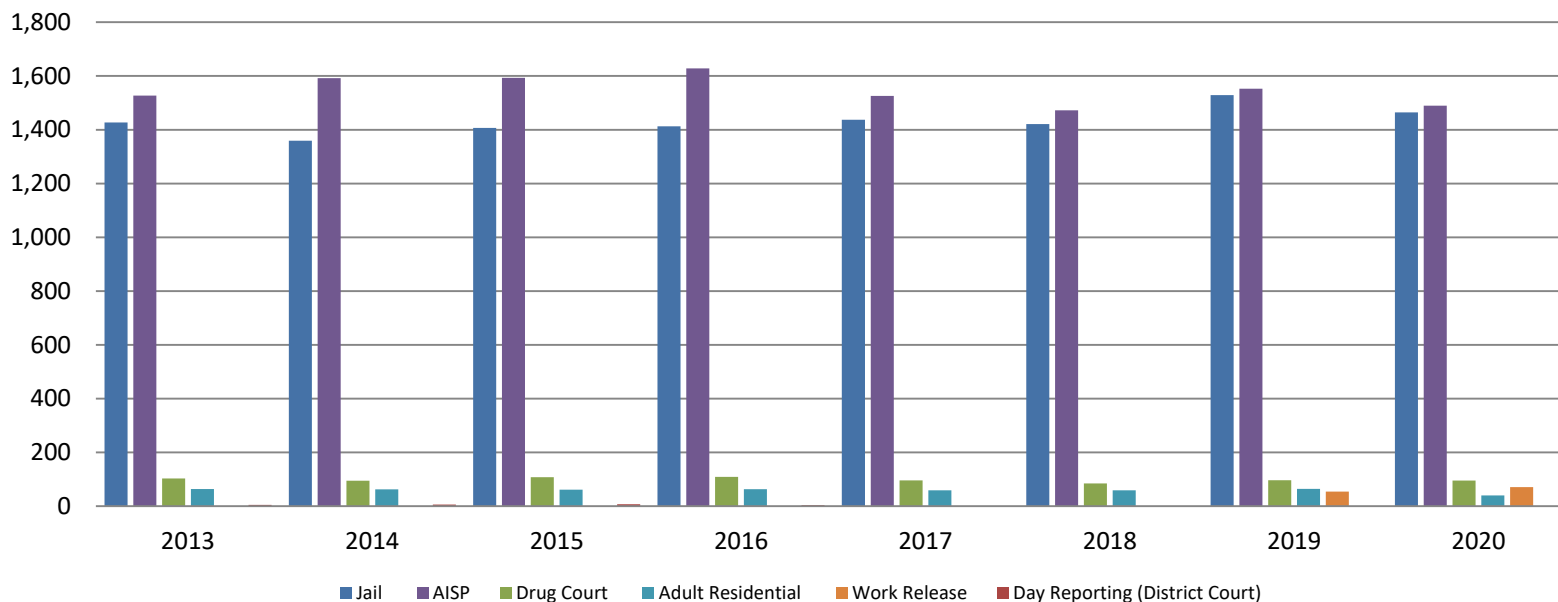


Month Year	Total	YTD Avg.
July 2019	78	67
July 2020	19	39



# Correlation: Total & Sedgwick County Programs (Adult)

## Total Annual ADP 2013 - present

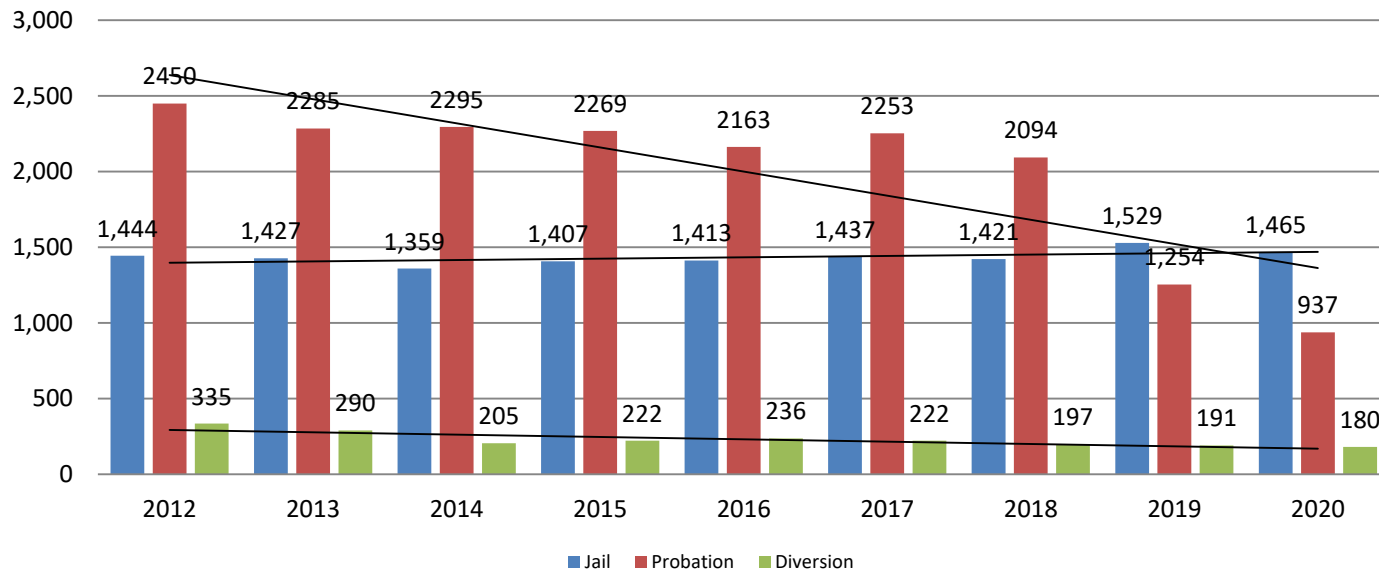


	2018	2019	2020
Jail	1,421	1,529	1,465
AISP	1,472	1,553	1,489
Drug Court	85	97	96
Adult Residential	59	65	40
Work Release	55	71	39
Day Reporting (DC)	0	0	0



# Correlation: Total & District Court Programs

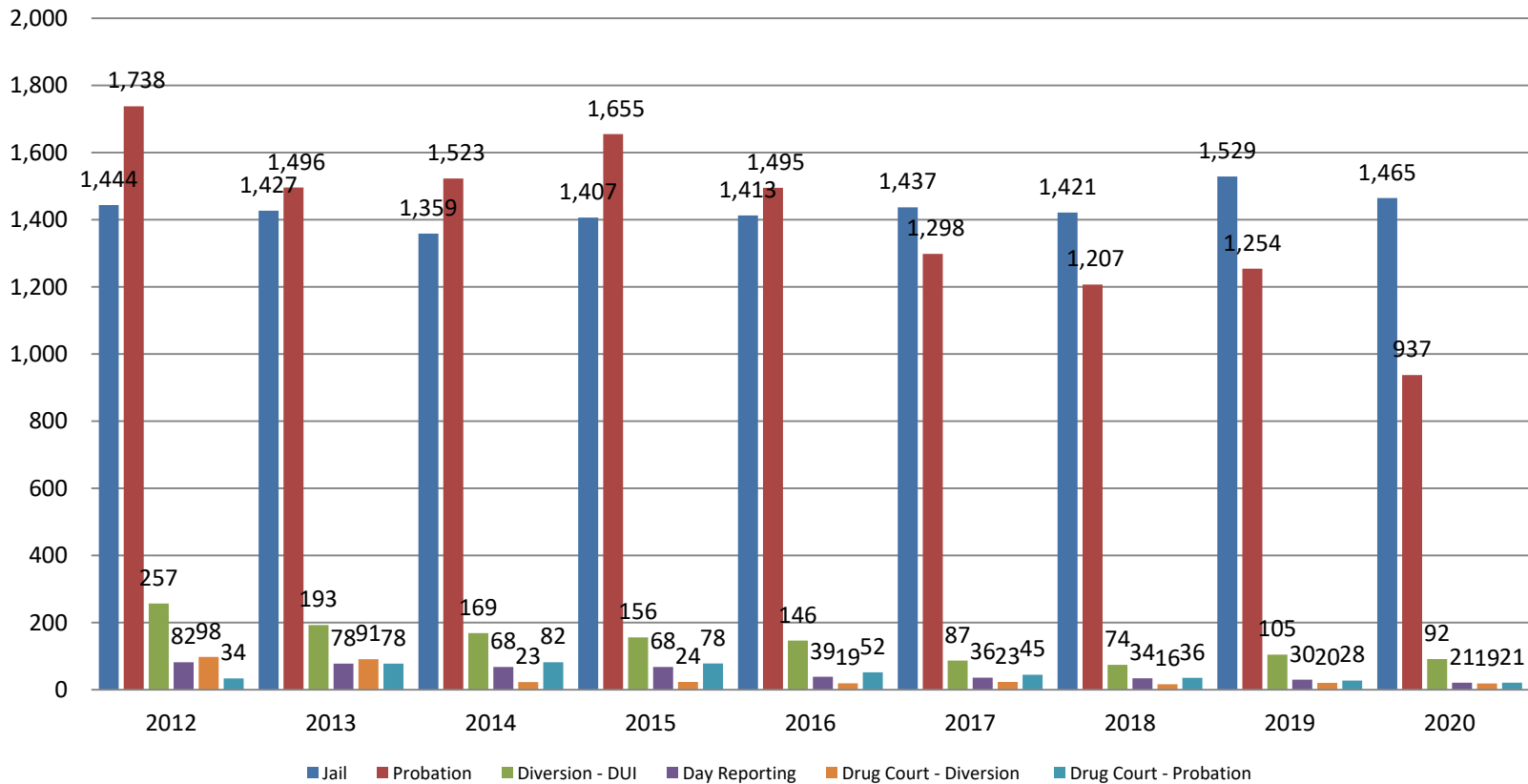
## Total Annual ADP: 2012 - present



Jail includes individuals in booking, detention, work release and out-of county (combined)  
 (data obtained from detention facility, DA's Office, & District Court)

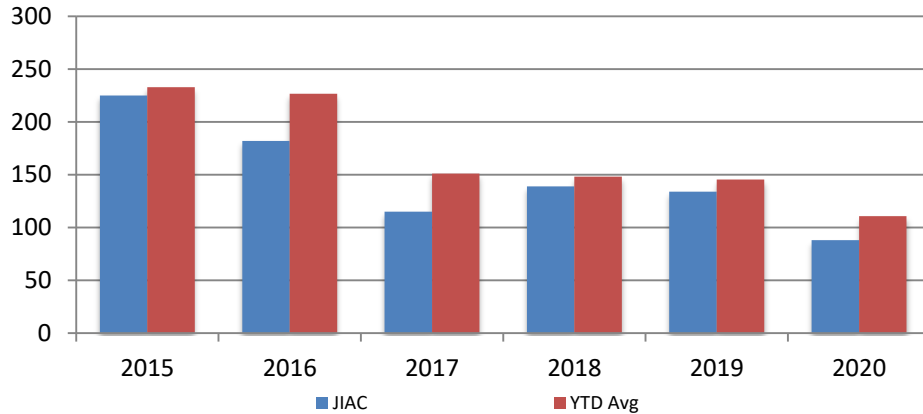
# Correlation: Total & City of Wichita / Municipal Court Programs

## Total Annual ADP: 2012 - present



# Juvenile

**Jiac Intakes  
July 2015 - present**

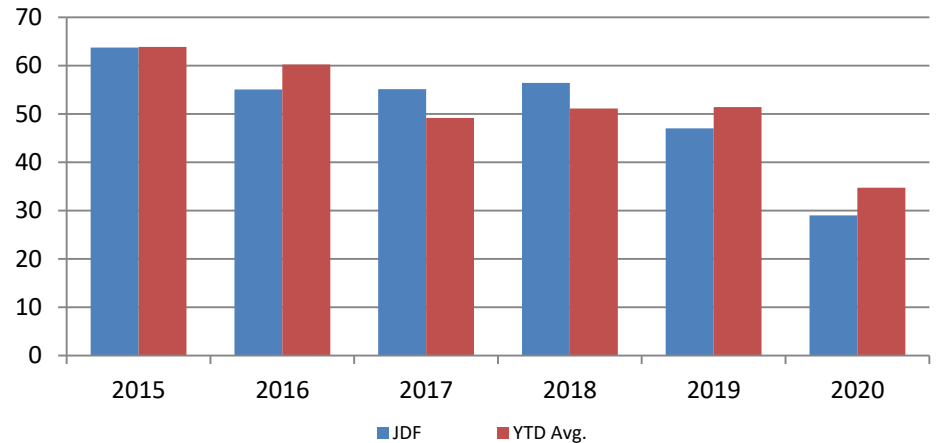


Year	July	July YTD Avg.
2015	225	233
2016	182	227
2017	115	151
2018	139	148
2019	134	145
2020	88	111

**Year July July YTD Avg.**

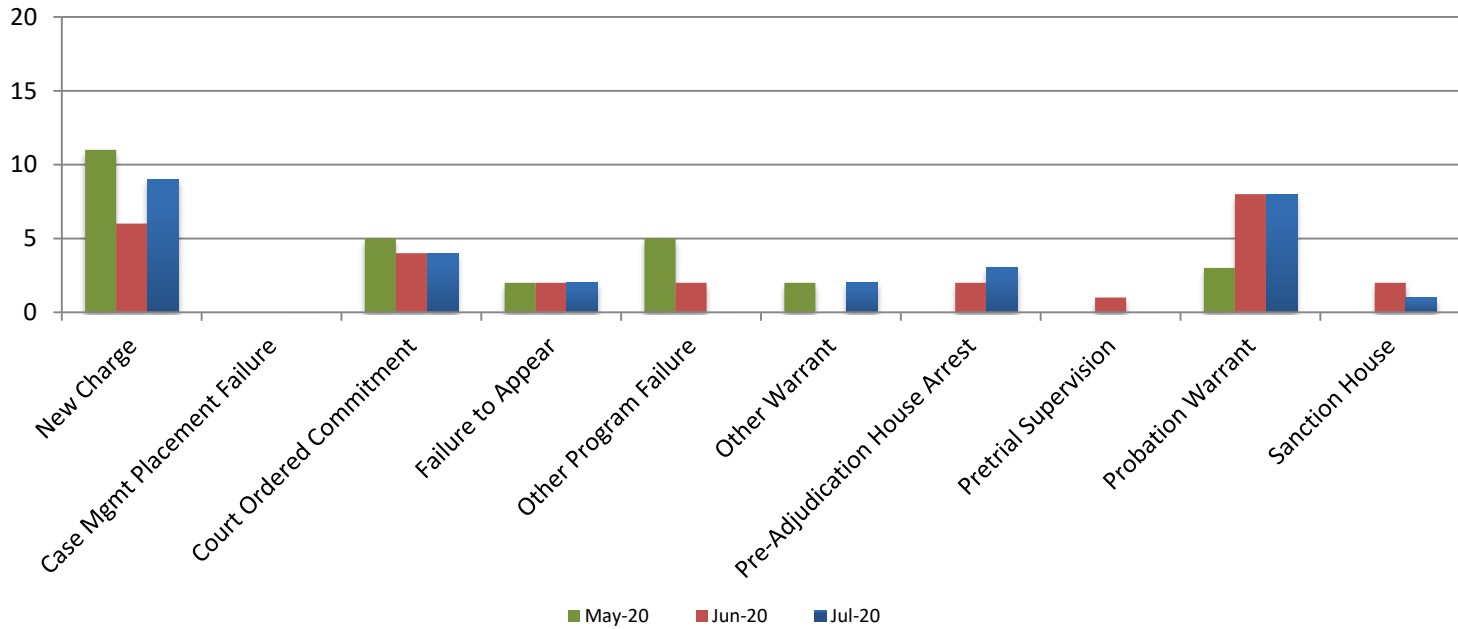
2015	64	64
2016	55	60
2017	55	49
2018	56	51
2019	47	51
2020	29	35

**JDF ADP  
July 2015 - present**





# Reason for JDF Admits



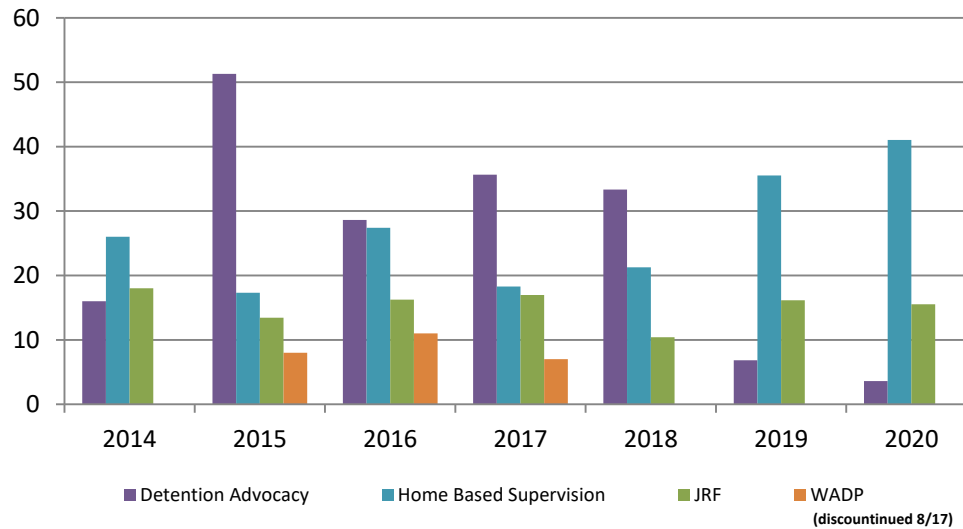
# Reason for JDF Admits

Reason	July 2019	July 2020
New Charges	11	9
Case Management Placement Failures	0	0
Court Ordered Commitment	4	4
Failure to Appear	8	2
Other Program Failure	5	0
Other Warrant	3	2
Pre-Adjudication House Arrest	4	3
Pretrial Supervision	4	0
Probation Warrant	6	8
Sanction House	2	1



# Juvenile Detention Alternatives

## ADP: July 2014 - present



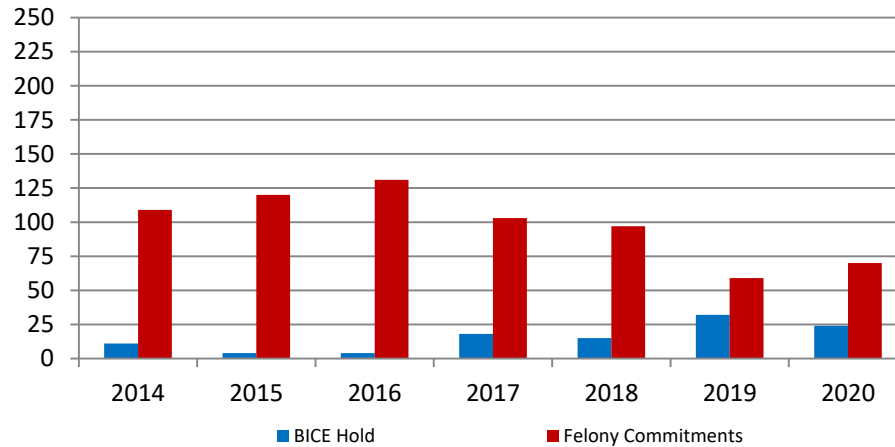
# Juvenile Detention Services

<b>July ADP</b>	<b>2017</b>	<b>2018</b>	<b>2019</b>	<b>2020</b>
Juvenile Detention Facility	55	56	47	29
Juvenile Residential Facility	17	10	16	16
Home Based Supervision	18	21	36	41
Detention Advocacy Case Management Services	36	33	7	4
Weekend Alternative Detention Program (total)	7	0	N/A	N/A

<b>July YTD AVERAGE</b>	<b>2017</b>	<b>2018</b>	<b>2019</b>	<b>2020</b>
Juvenile Detention Facility	49	51	51	35
Juvenile Residential Facility	15	12	14	17
Home Based Supervision	22	26	28	29
Detention Advocacy Case Management Services	35	32	24	12
Weekend Alternative Detention Program	15	0	N/A	N/A

# Monthly Jail Snapshot: June 30, 2020

**Snapshots July 2014 - present**



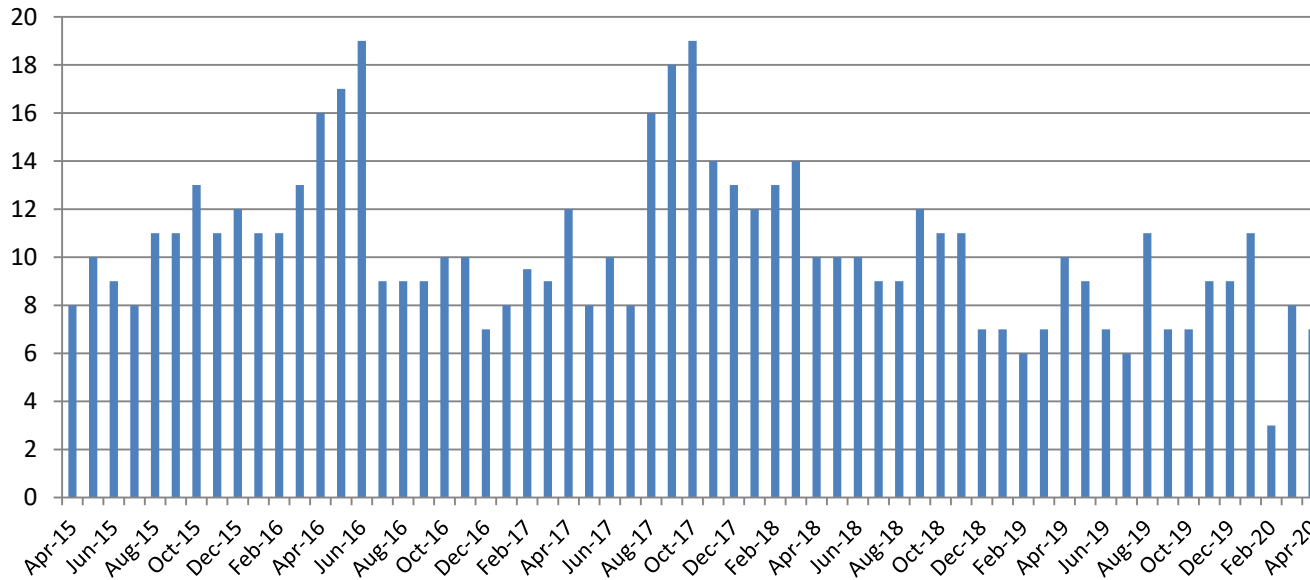
<b>BICE Hold</b>	<b>2014</b>	<b>2015</b>	<b>2016</b>	<b>2017</b>	<b>2018</b>	<b>2019</b>	<b>2020</b>
<b>July</b>	11	4	4	18	15	32	24

<b>Felony Commitments</b>	<b>2014</b>	<b>2015</b>	<b>2016</b>	<b>2017</b>	<b>2018</b>	<b>2019</b>	<b>2020</b>
<b>July</b>	109	120	131	103	97	59	70



## Journal Entry Completion (Average Days) June 2015 - present



June	2015	2016	2017	2018	2019	2020
Avg. Days	8	16	12	10	10	7
YTD Avg.	8	12	9	13	8	8

