



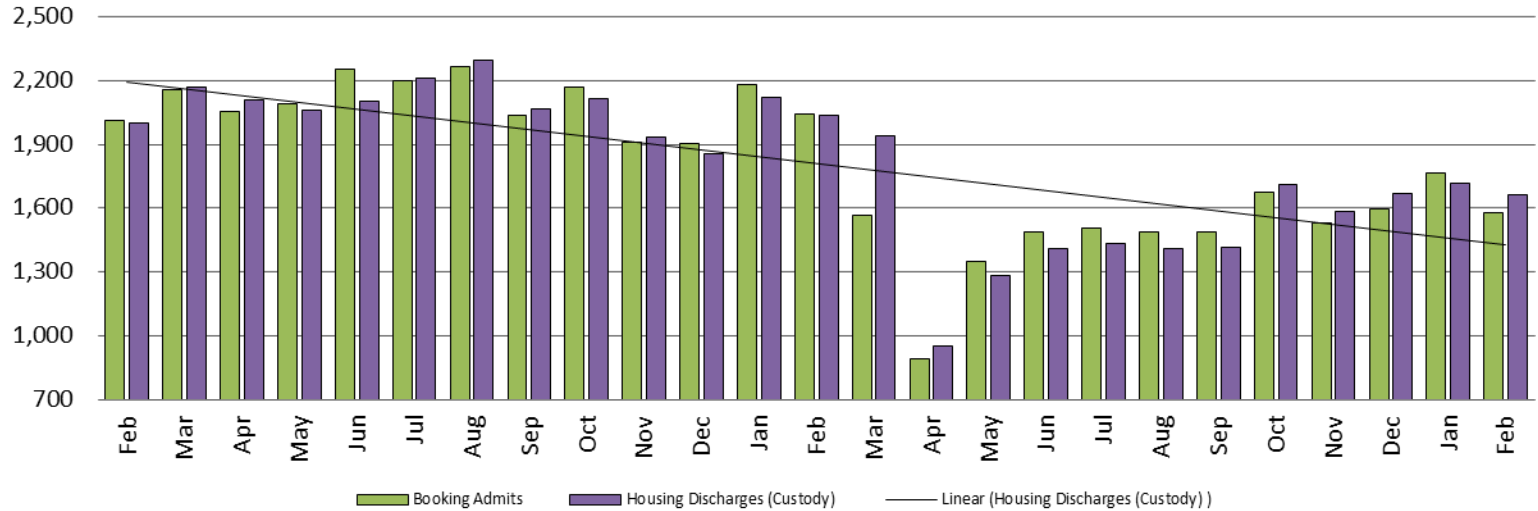
# Criminal Justice Coordinating Council

## Population Report & Program Trends

February 2021

# Detention Facility

## Booking Admits & Housing Discharges from Custody Februart 2019 - present



### Bookings Year over Year: Month of February



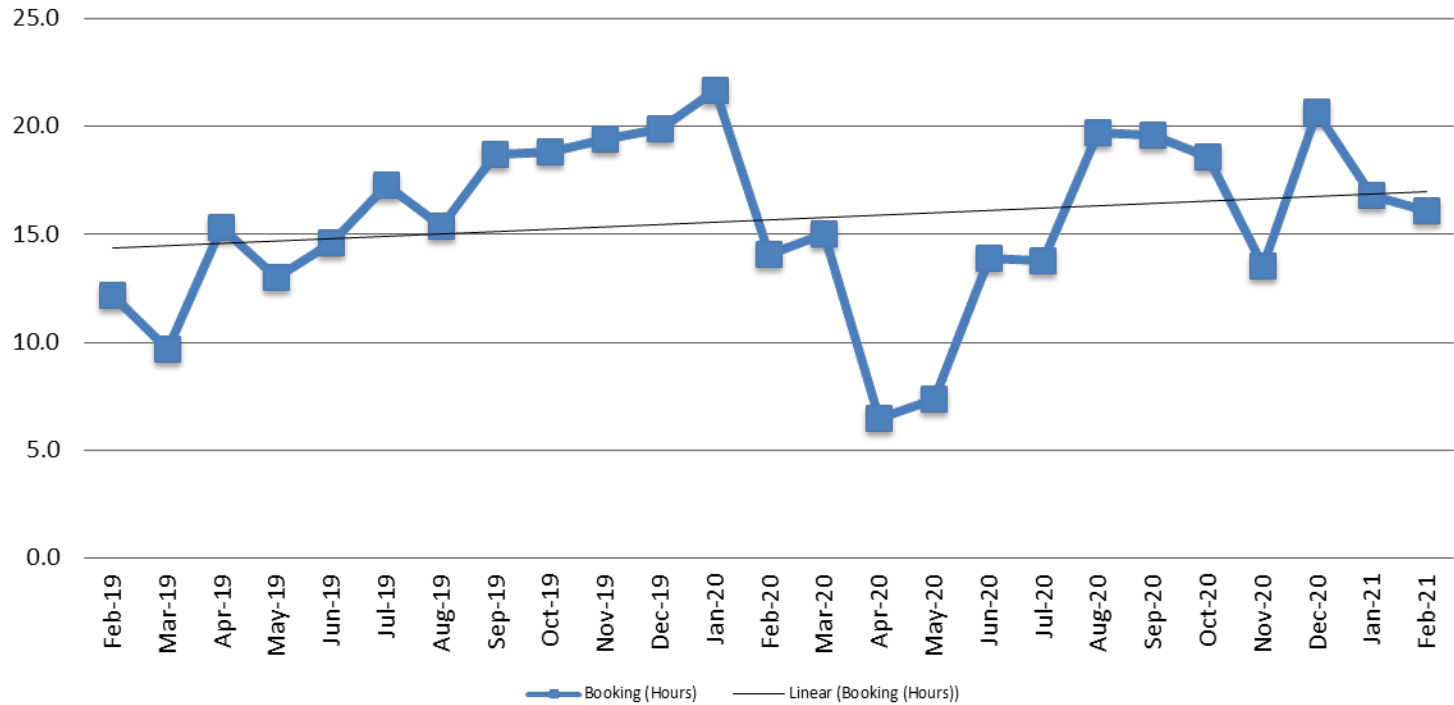
Bookings February	Housing Discharges February
2019: 2,012	2019: 1,997
2020: 2,042	2020: 2,036
2021: 1,580	2021: 1,661



Sedgwick County...  
working for you



## Average Length of Stay: Booking (Hours) February 2019 - present

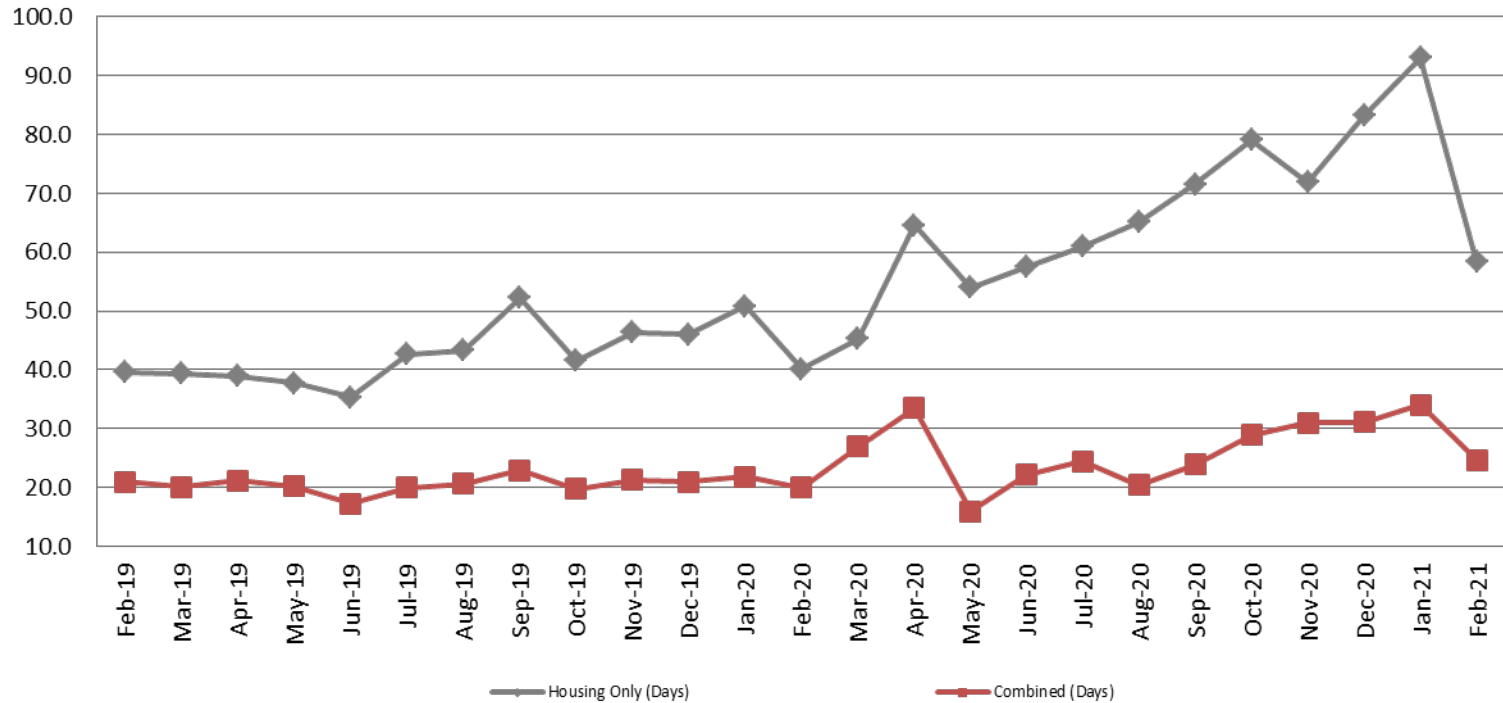


February	February YTD Average
2019: 12.2	2019: 12.1
2020: 14.7	2020: 17.9
2021: 16.8	2021: 16.5



# Average Length of Stay: Housing & Combined (Days)

## February 2019 - present

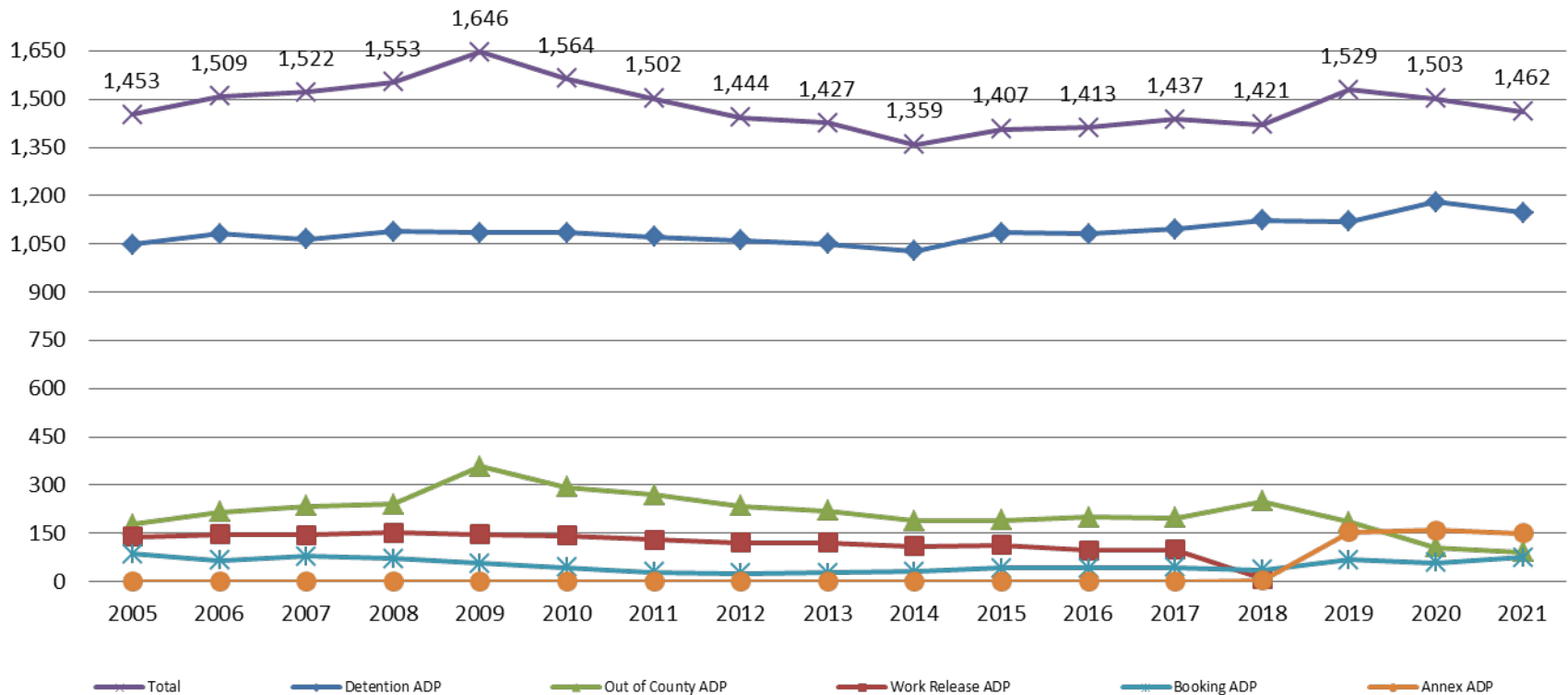


Month Year	Housing Only	Housing YTD AVG	Combined Days	Combined YTD AVG
February 2019	39.6	40.4	21.0	21.8
February 2020	40.2	45.5	20.0	20.9
February 2021	58.4	75.7	24.7	29.4



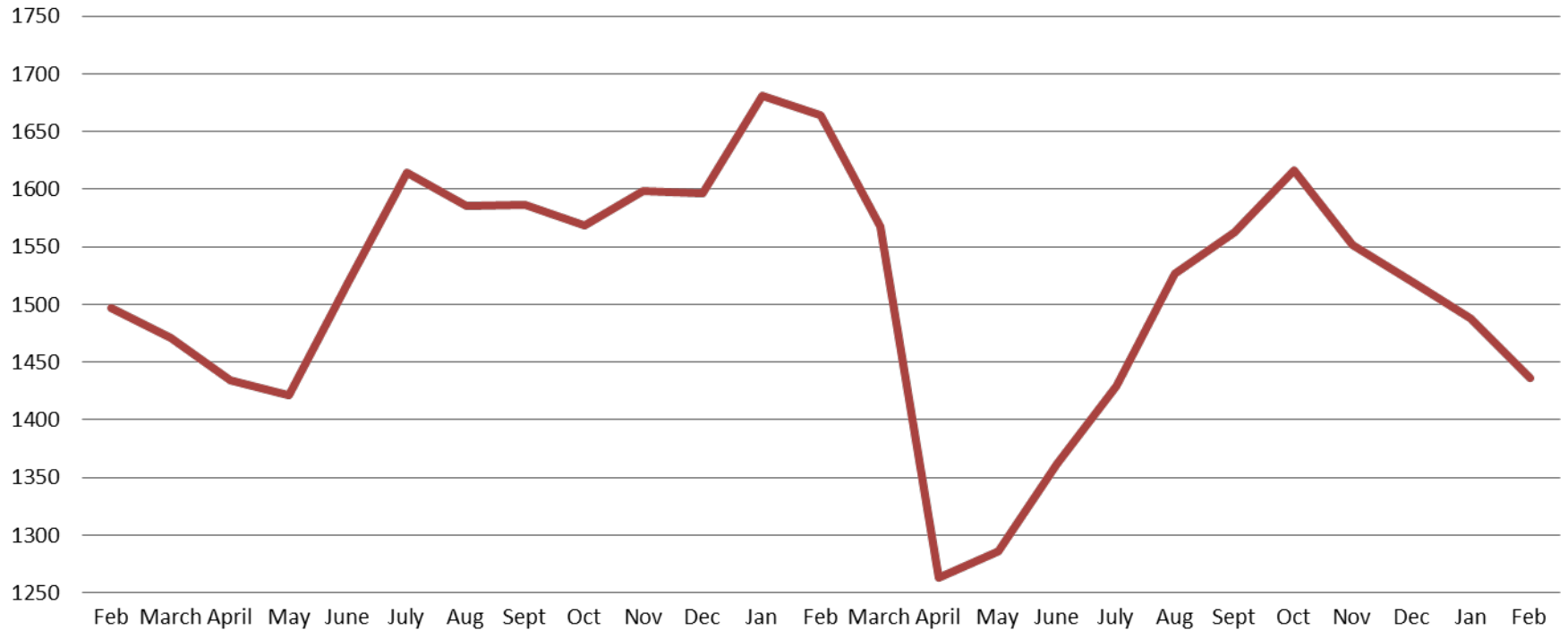
# Jail: Annual Average Daily Population (ADP)

**TRENDS: Booking, Detention, Work Release, & Out of County Annual ADP: 2005 - present**





# TOTAL MONTHLY ADP: JAIL (Booking, Detention Facility, Annex, & Out of County) February 2019 - present

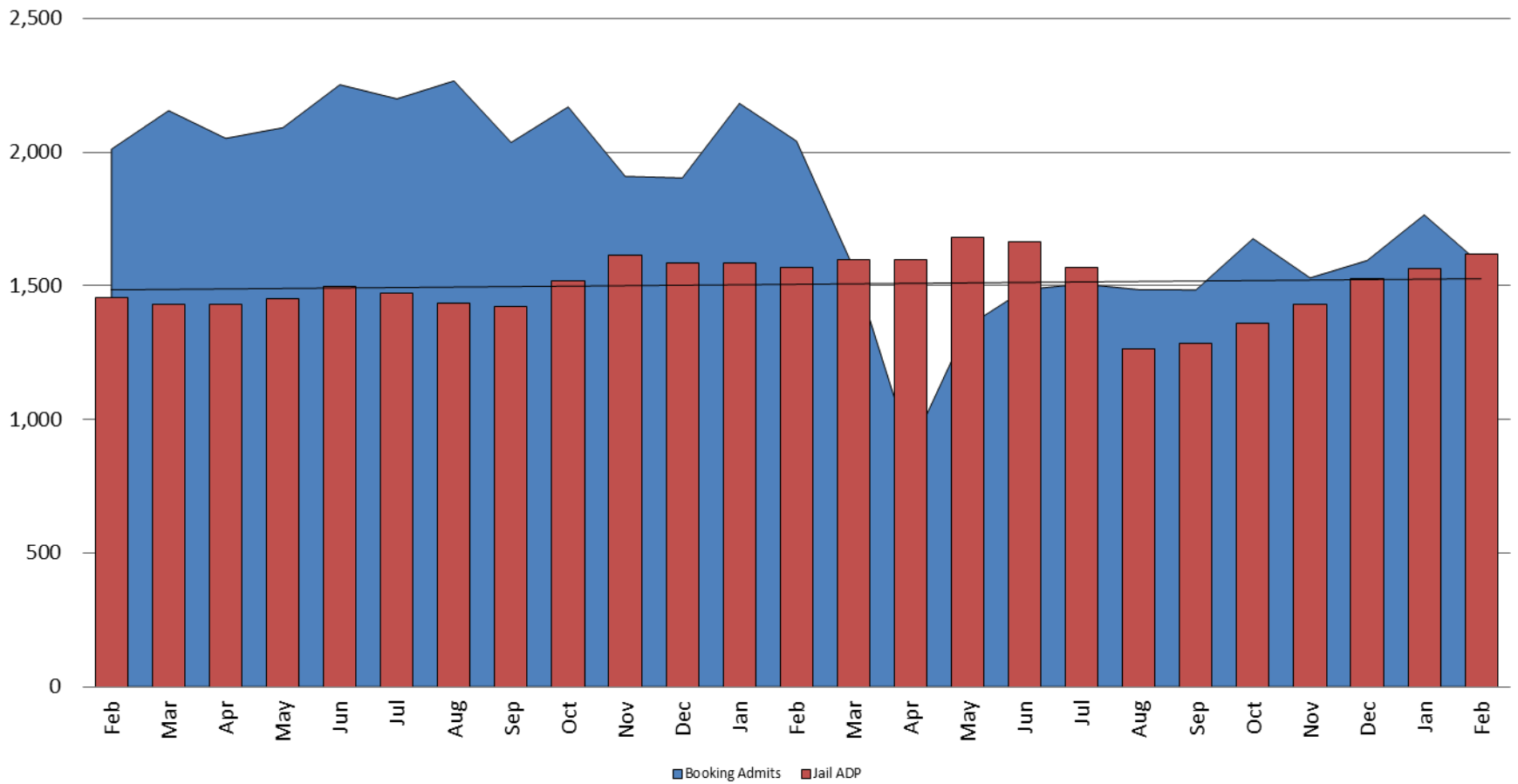


February 2019	February 2020	February 2021
1,497	1,664	1,436





## Booking Admits & Total Monthly ADP (Jail): February 2019 - present



■ Booking Admits ■ Jail ADP

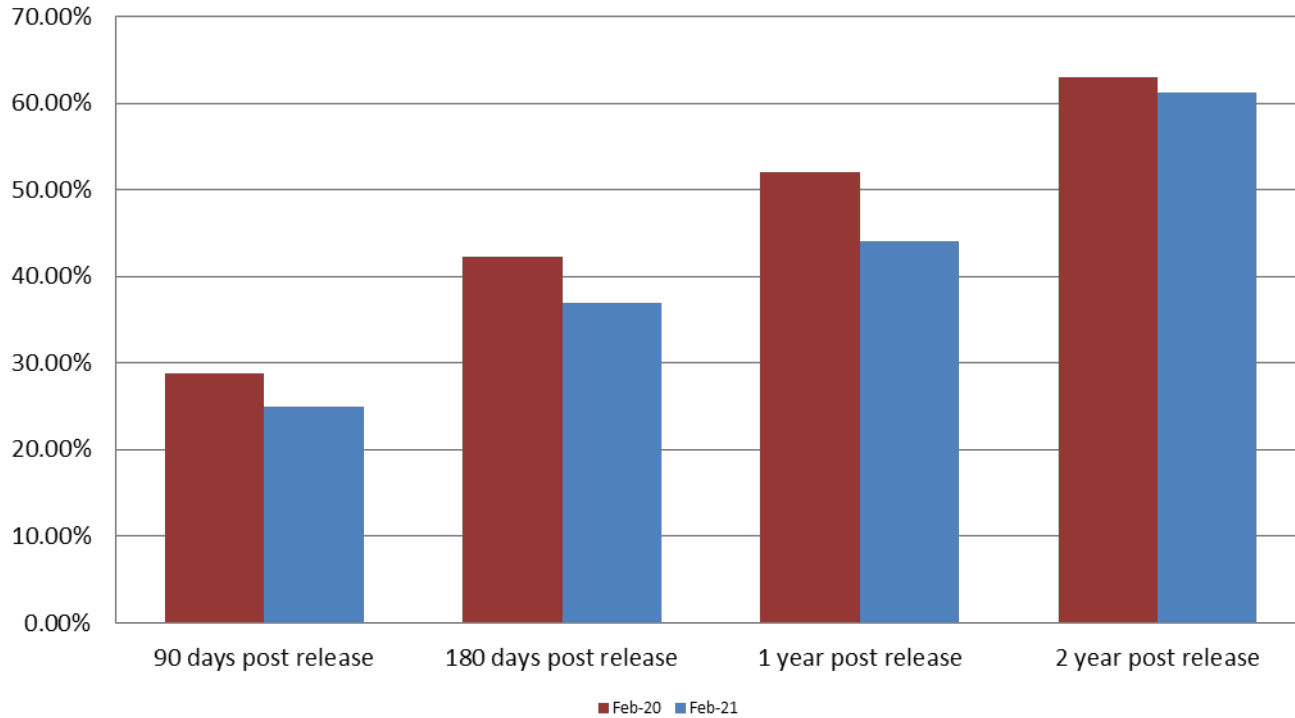


Sedgwick County...  
working for you

Jail includes individuals in booking, detention, work release and out-of county (combined)  
(data obtained from detention facility)



## Percent of released inmates rearrested February



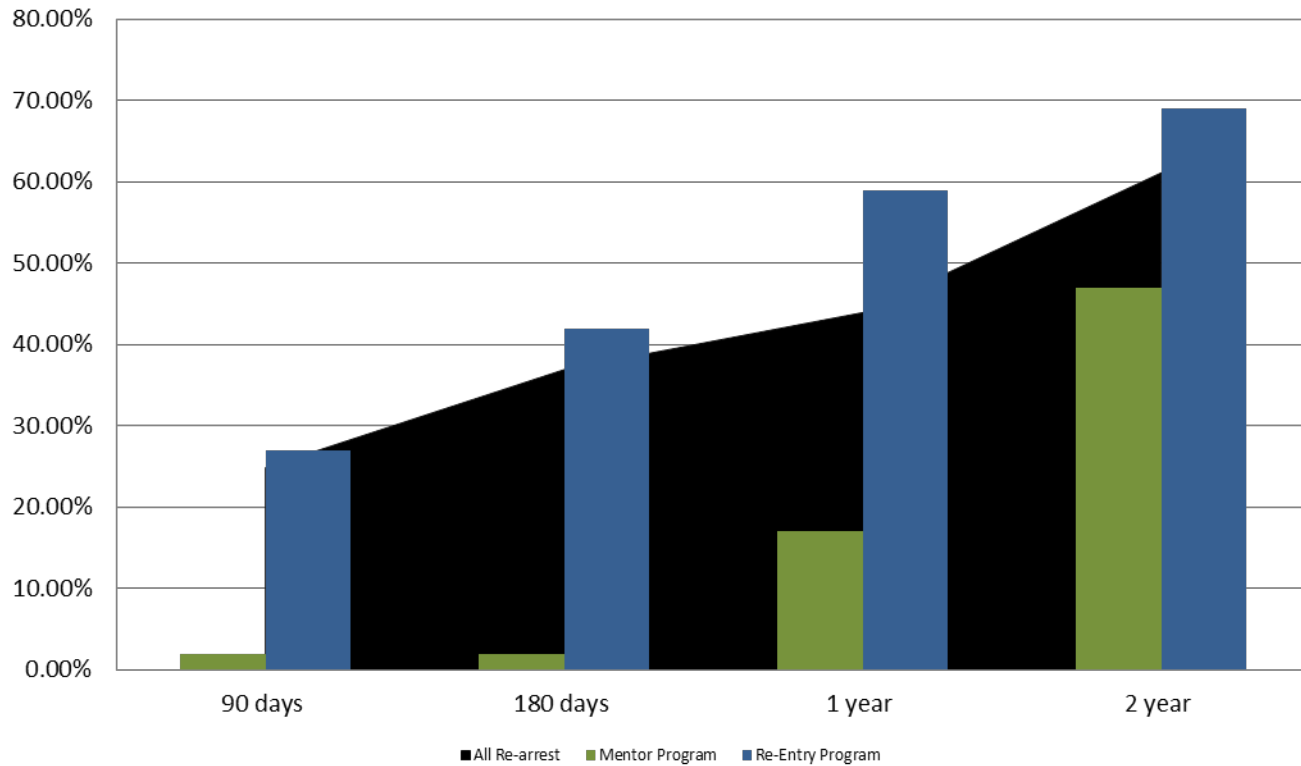
Month Year	90 Days	180 Days	1 Year	2 Years
February 2020	28.75%	42.19%	51.99%	62.92%
February 2021	24.91%	36.95%	43.97%	61.15%







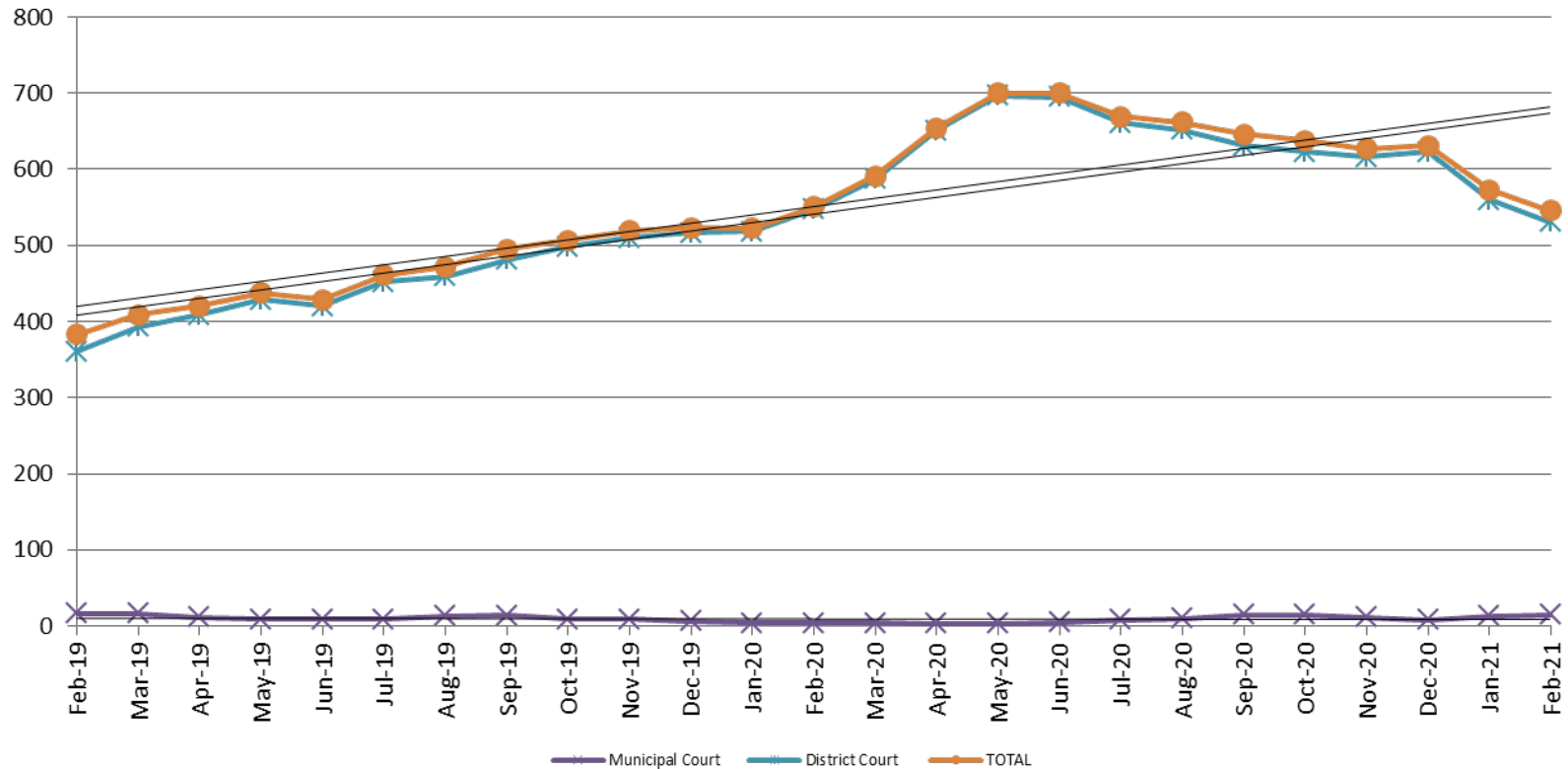
# Recidivism by Programs February 2021



<b>February 2021</b>	<b>90 Days</b>	<b>180 Days</b>	<b>1 year</b>	<b>2 years</b>
All Re-arrests	24.91%	36.95%	43.97%	61.15%
Mentor Program	2%	2%	17%	47%
Re-Entry Program	27%	42%	59%	69%



# Pretrial Services Program (PSP) Monthly ADP: February 2019 - present

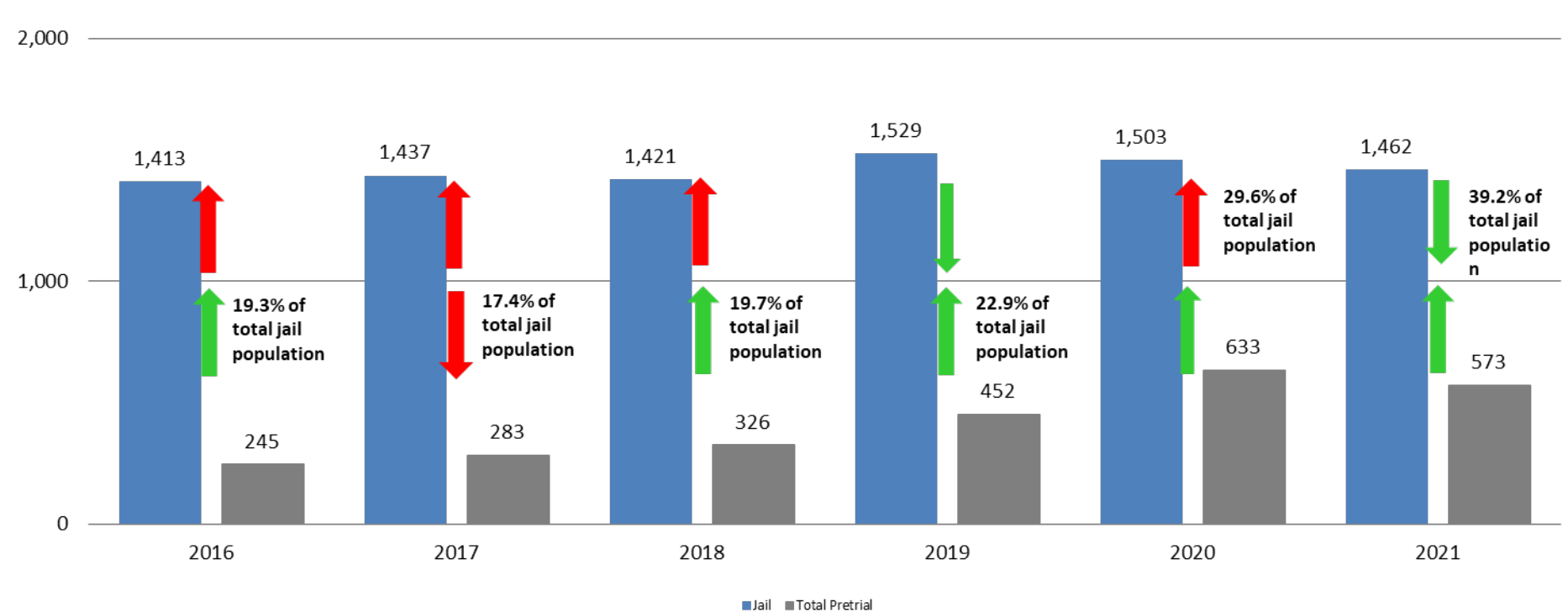


February	2019 ADP	2020 ADP	2021 ADP	2019 YTD Avg.	2020 YTD Avg.	2021 YTD Avg.
Muni. Court	16	4	15	18.5	4	14
Dist. Court	355.5	533	545.5	383	551	546
<b>Total</b>	<b>383</b>	<b>551</b>	<b>546</b>	<b>377</b>	<b>537</b>	<b>559.5</b>



# Correlation: Total & PSP

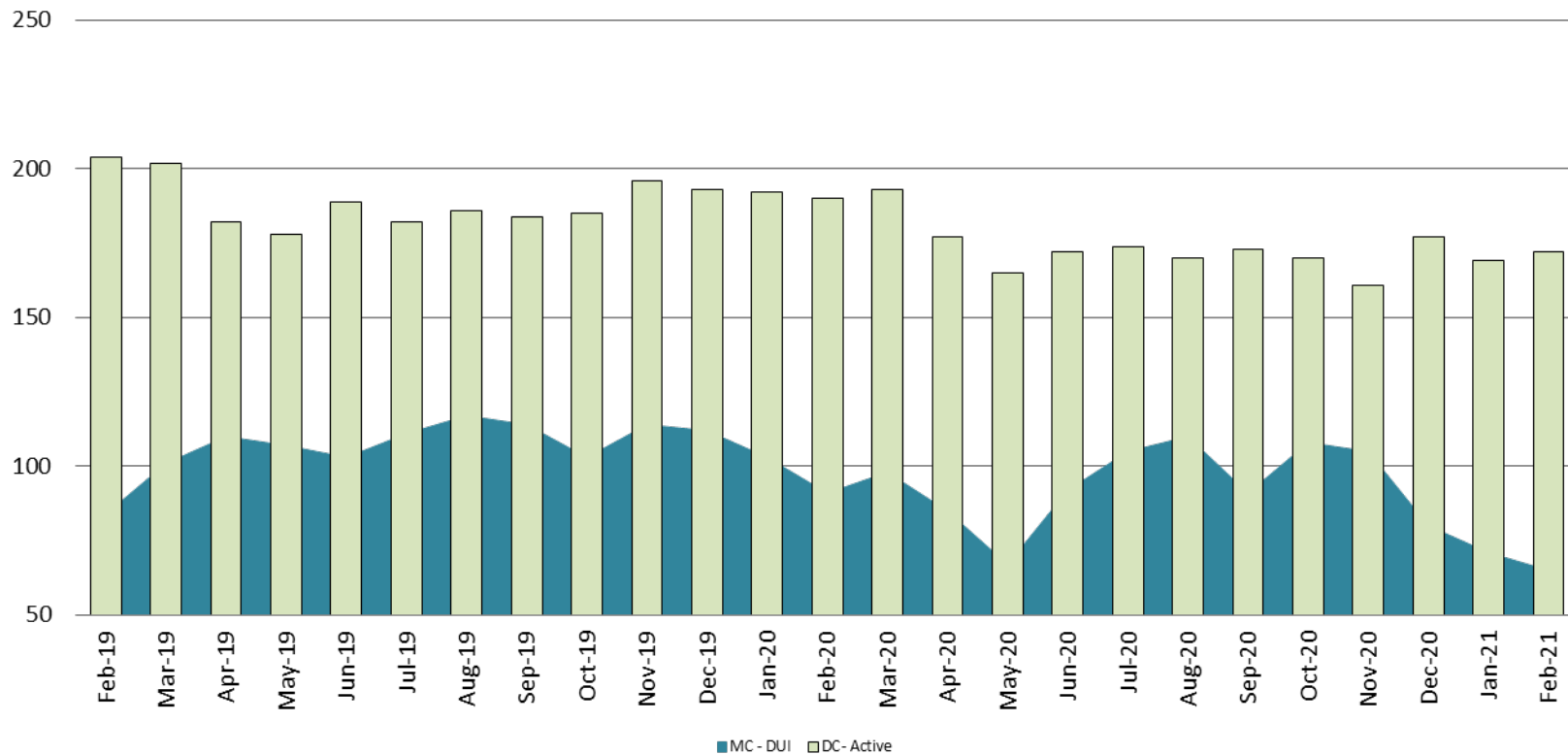
## Total Annual ADP: 2016 - present





# Diversion - Active Caseload

February 2019 - present

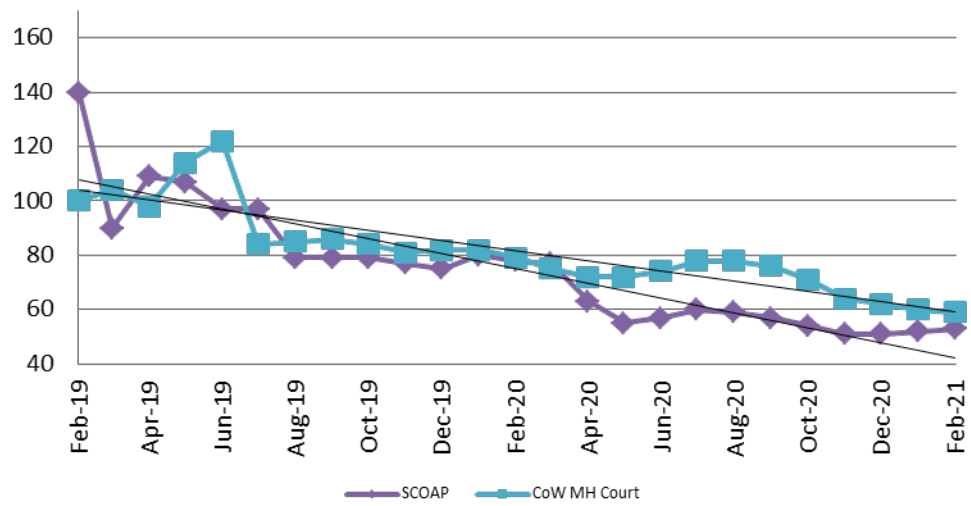


February	2019	2020	2021	2019 YTD Avg.	2020 YTD Avg.	2021 YTD Avg.
Muni. Court- DUI	84	91	65	84	97	68
Dist. Court- Active	204	190	172	205	191	171

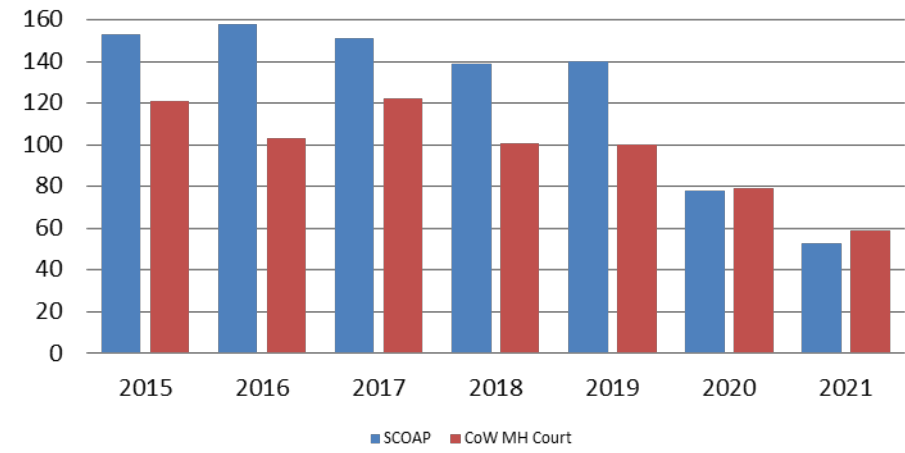




## Mental Health - ADP February 2019 - present

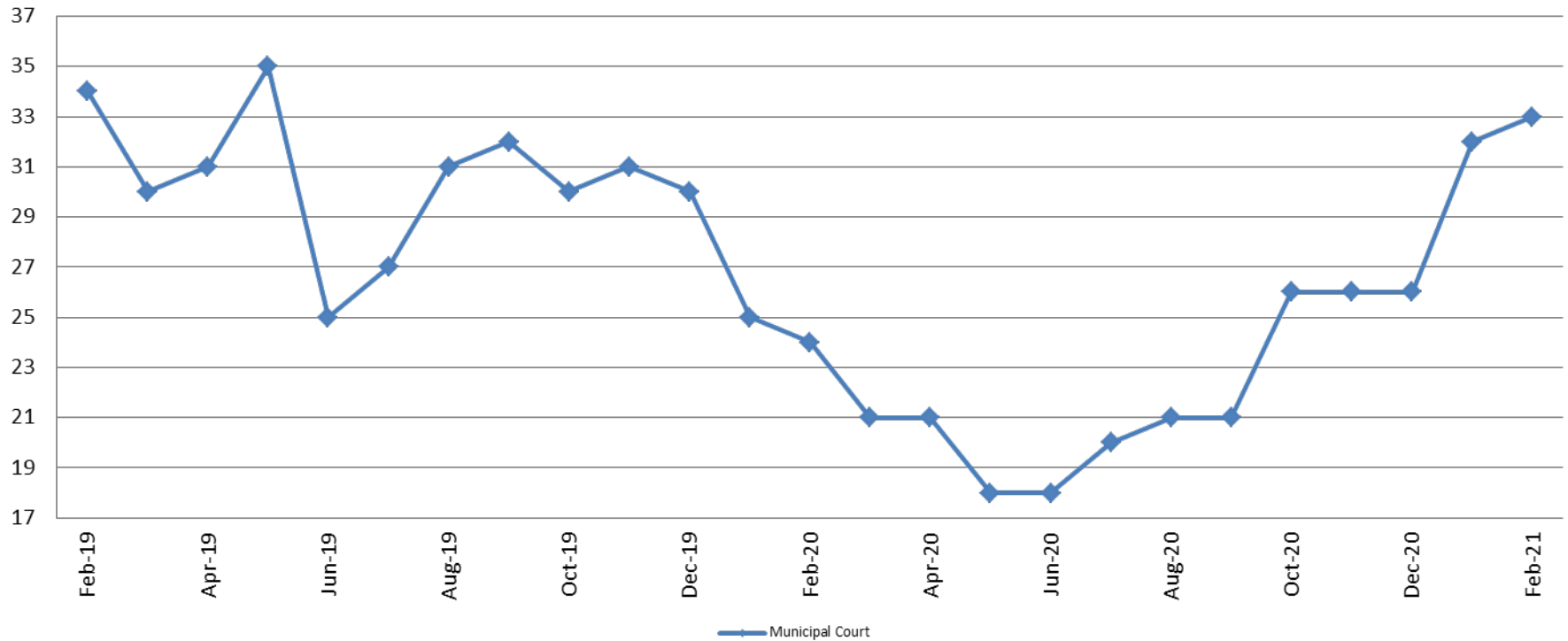


## Mental Health ADP Year over Year - February



February	2019 ADP	2020 ADP	2021 ADP	2019 YTD Avg.	2020 YTD Avg.	2021 YTD Avg.
SCOAP	140	78	53	144	79	53
MH Court	100	79	59	93	81	60

## Day Reporting - Active Caseload February 2019 - present

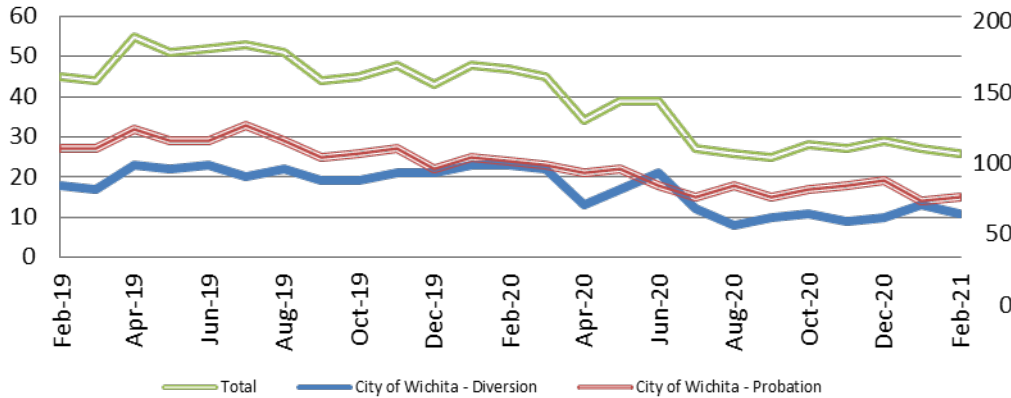


February	2016	2017	2018	2019	2020	2021
Muni. Court	48	35	38	34	24	33
Muni. Court YTD Avg.	48	35	39	31	25	33

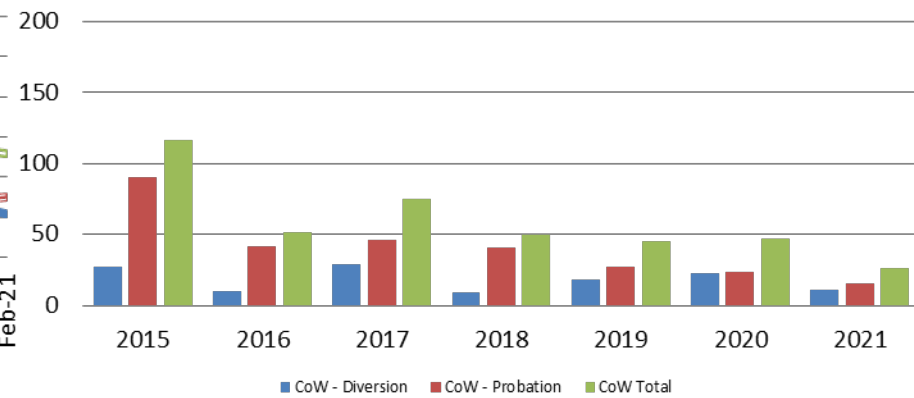




## Drug Court - City of Wichita ADP: February 2019 - present



## Drug Court- City of Wichita Year over Year - February

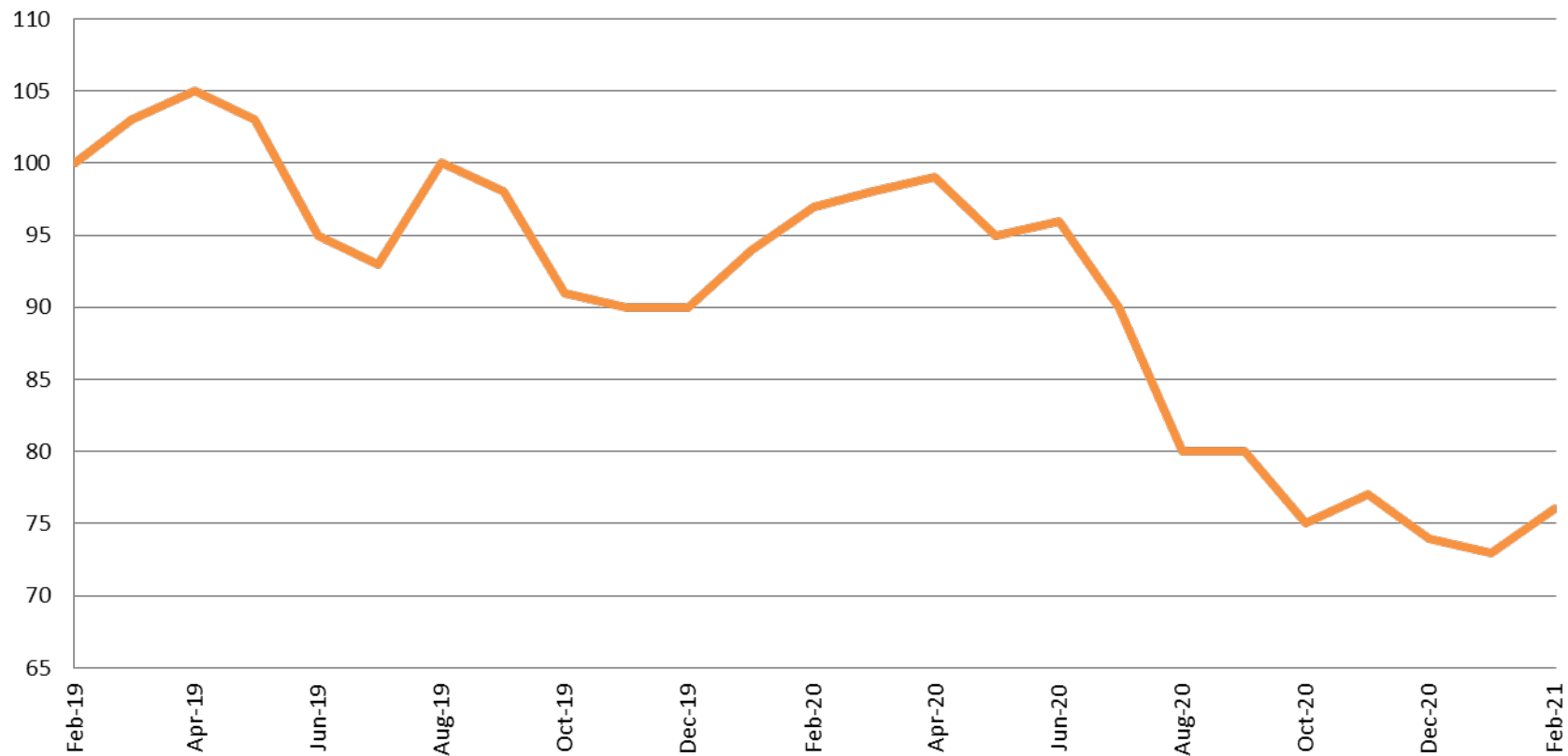


February	2019	2020	2021
Diversion	18	23	11
Probation	27	24	15
Total	45	47	26





## Drug Court - Sedgwick County ADP: February 2019 - present

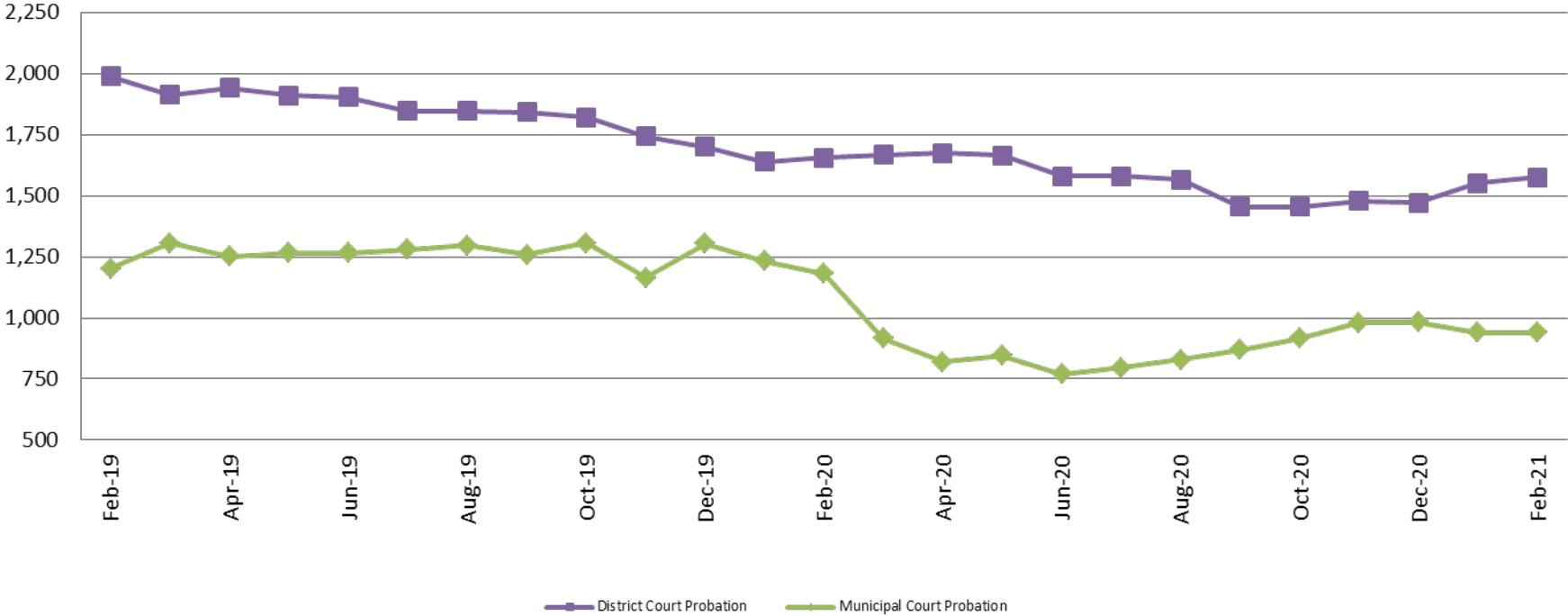


<b>February</b>	<b>2019</b>	<b>2020</b>	<b>2021</b>
Sedg. Co. ADP	100	97	76
YTD Avg.	97	96	75





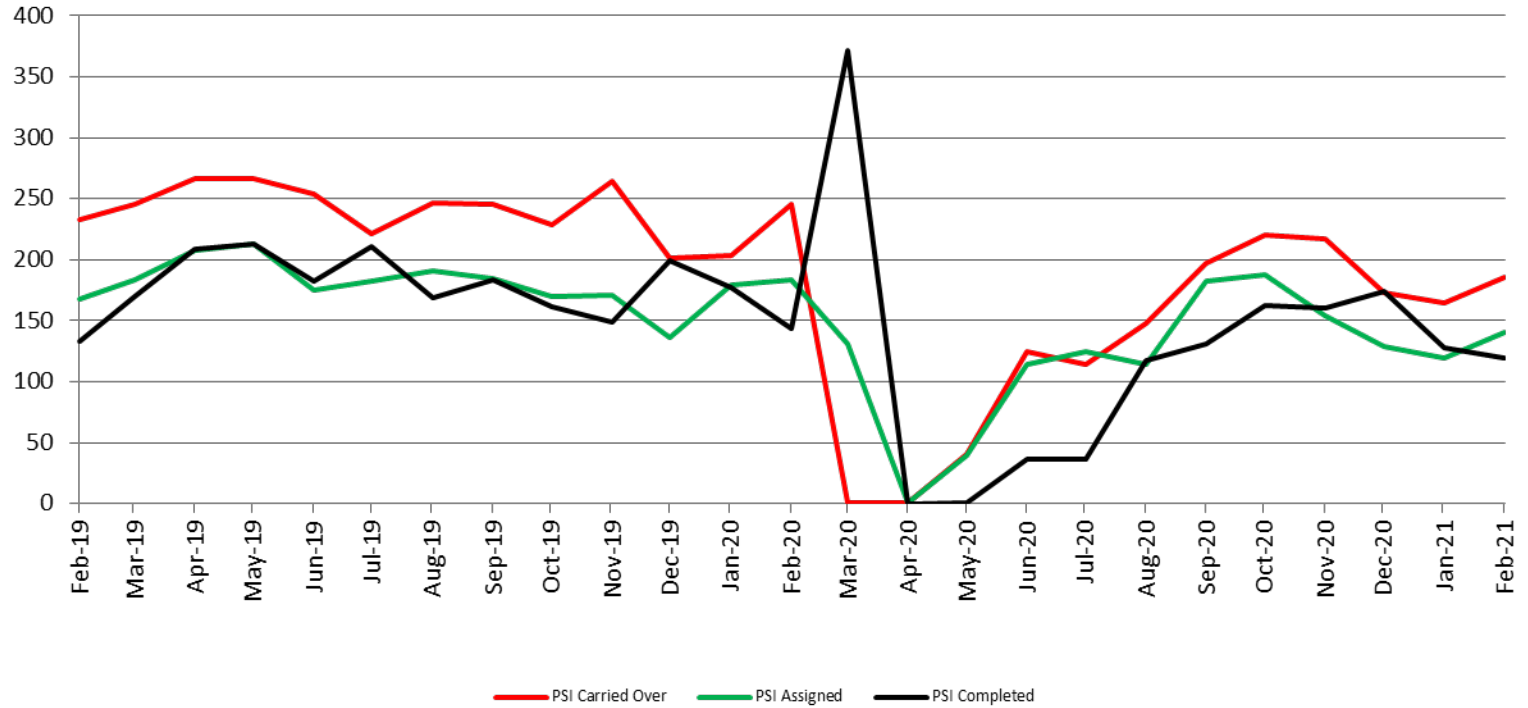
# Probation - Active Caseloads February 2019 - present



February	2019	2020	2021	2019 YTD Avg.	2020 YTD Avg.	2021 YTD Avg.
Dist. Court Probation	1,988	1,656	1,575	1,990	1,648	1,563
Muni. Court Probation	1,202	1,180	941	1,177	1,207	941



# District Court Probation: Pre-Sentence Investigation February 2019 - present

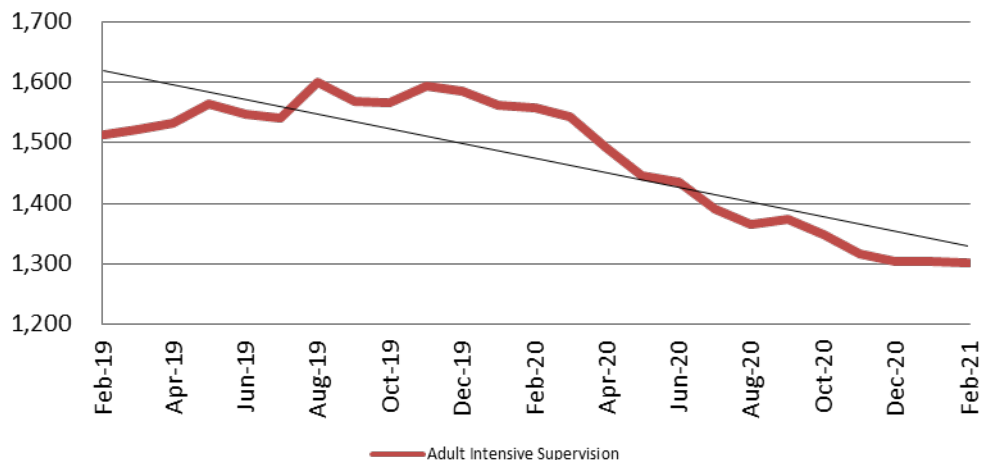


<b>February</b>	<b>2019</b>	<b>2020</b>	<b>2021</b>
Carried Over	233	245	186
Assigned	168	184	140
Completed	133	144	119



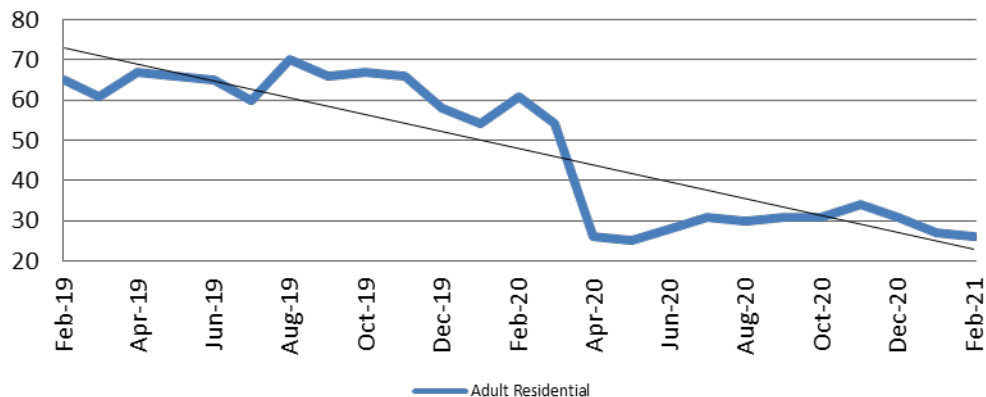
# Community Corrections

**Adult Intensive Supervision Probation (AISP):  
ADP February 2019 - present**



Year	February	February YTD Avg.
2019	1,513	1,507
2020	1,557	1,560
2021	1,302	1,303

**Adult Residential: ADP  
February 2019 - present**



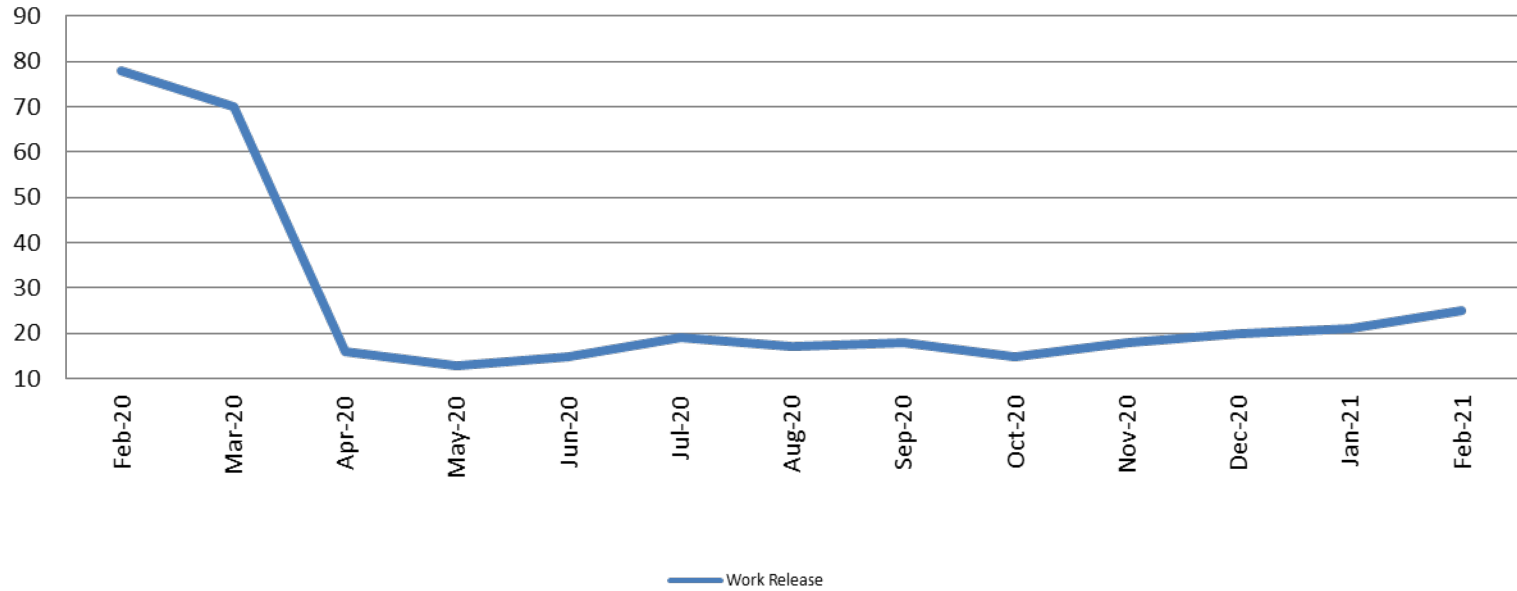
Year	February	February YTD Avg.
2019	65	66
2020	61	58
2021	26	27





# Community Corrections

## Work Release: ADP February 2020 - present

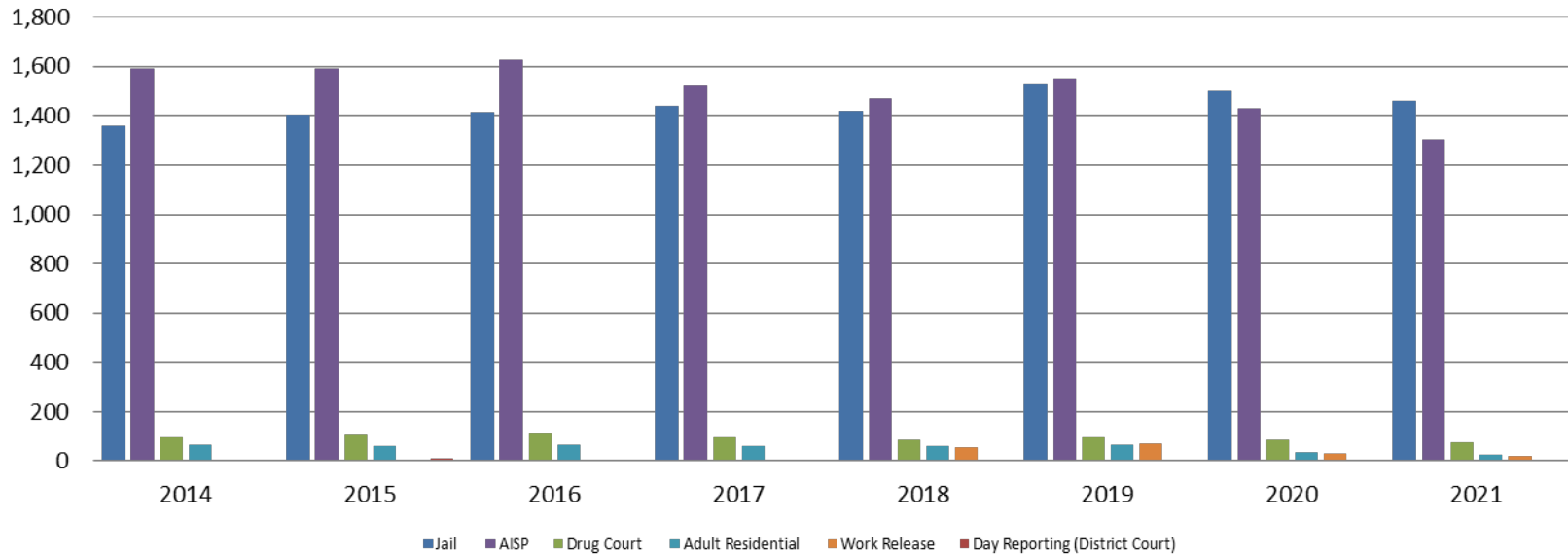


Month Year	Total	YTD Avg.
February 2020	78	72
February 2021	25	23



# Correlation: Total & Sedgwick County Programs (Adult)

## Total Annual ADP 2014 - present

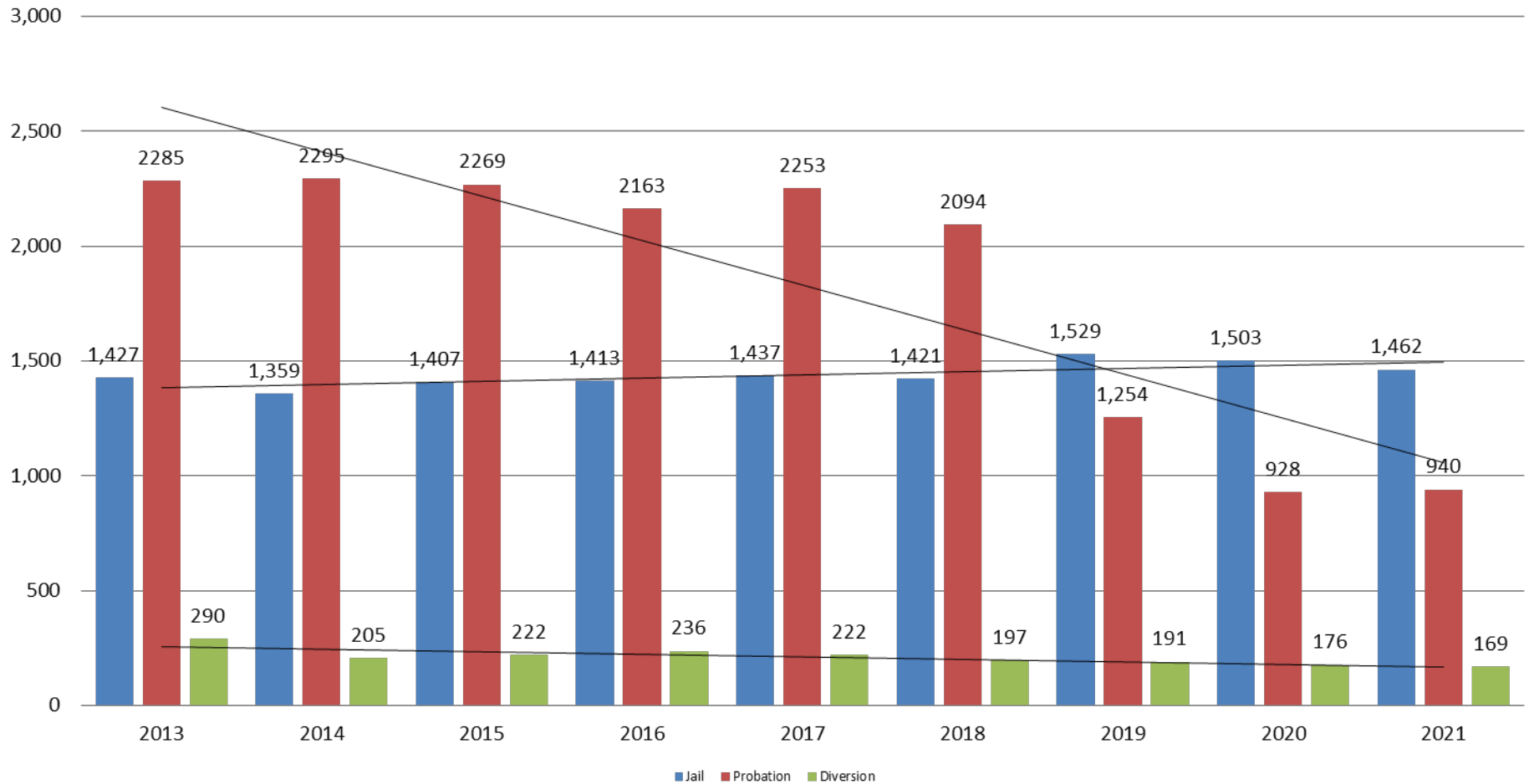


	2019	2020	2021
Jail	1,529	1,503	1,462
AISP	1,553	1,428	1,304
Drug Court	97	88	73
Adult Residential	65	36	27
Work Release	71	30	21
Day Reporting (DC)	0	0	0



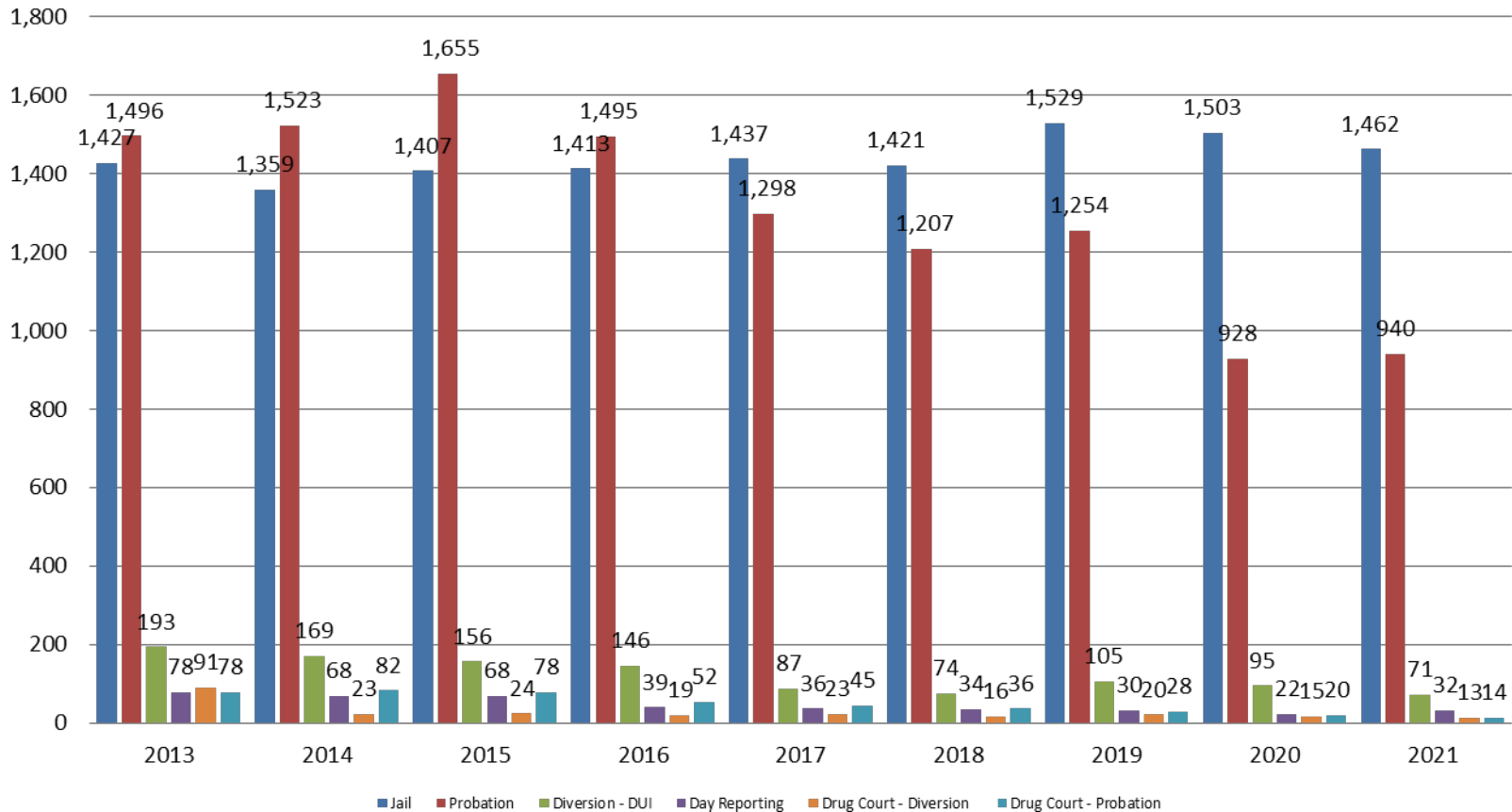
# Correlation: Total & District Court Programs

## Total Annual ADP: 2013 - present



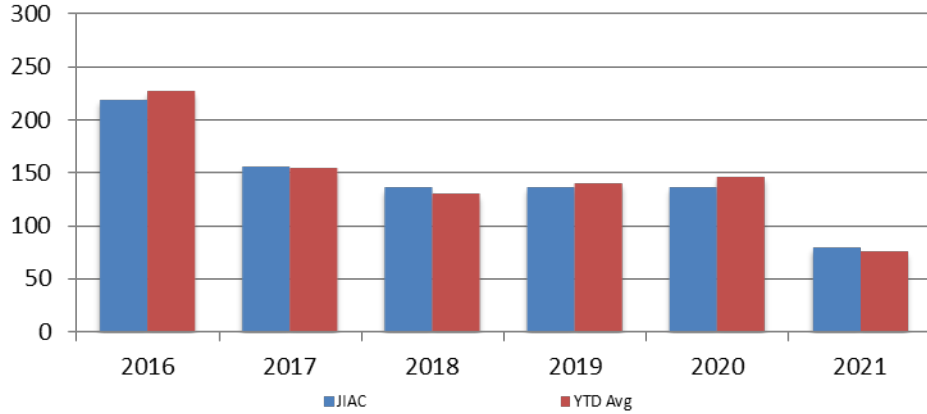
# Correlation: Total & City of Wichita / Municipal Court Programs

## Total Annual ADP: 2013 - present



# Juvenile

**Jiac Intakes**  
February 2016 - present



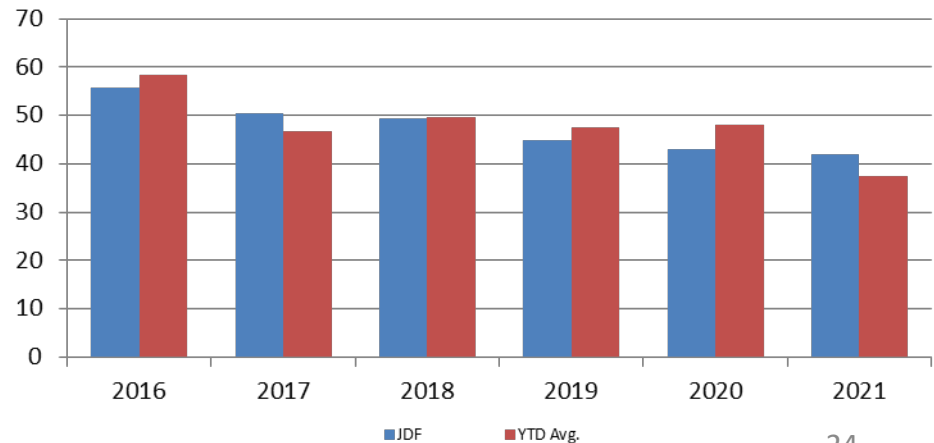
Year	February	February YTD Avg.
2016	219	227
2017	156	154
2018	136	130
2019	137	141
2020	137	147
2021	80	76

2016	219	227
2017	156	154
2018	136	130
2019	137	141
2020	137	147
2021	80	76

Year	February	February YTD Avg.
2016	56	58
2017	50	47
2018	49	50
2019	45	48
2020	43	48
2021	42	38

2016	56	58
2017	50	47
2018	49	50
2019	45	48
2020	43	48
2021	42	38

**JDF ADP**  
February 2016 - present



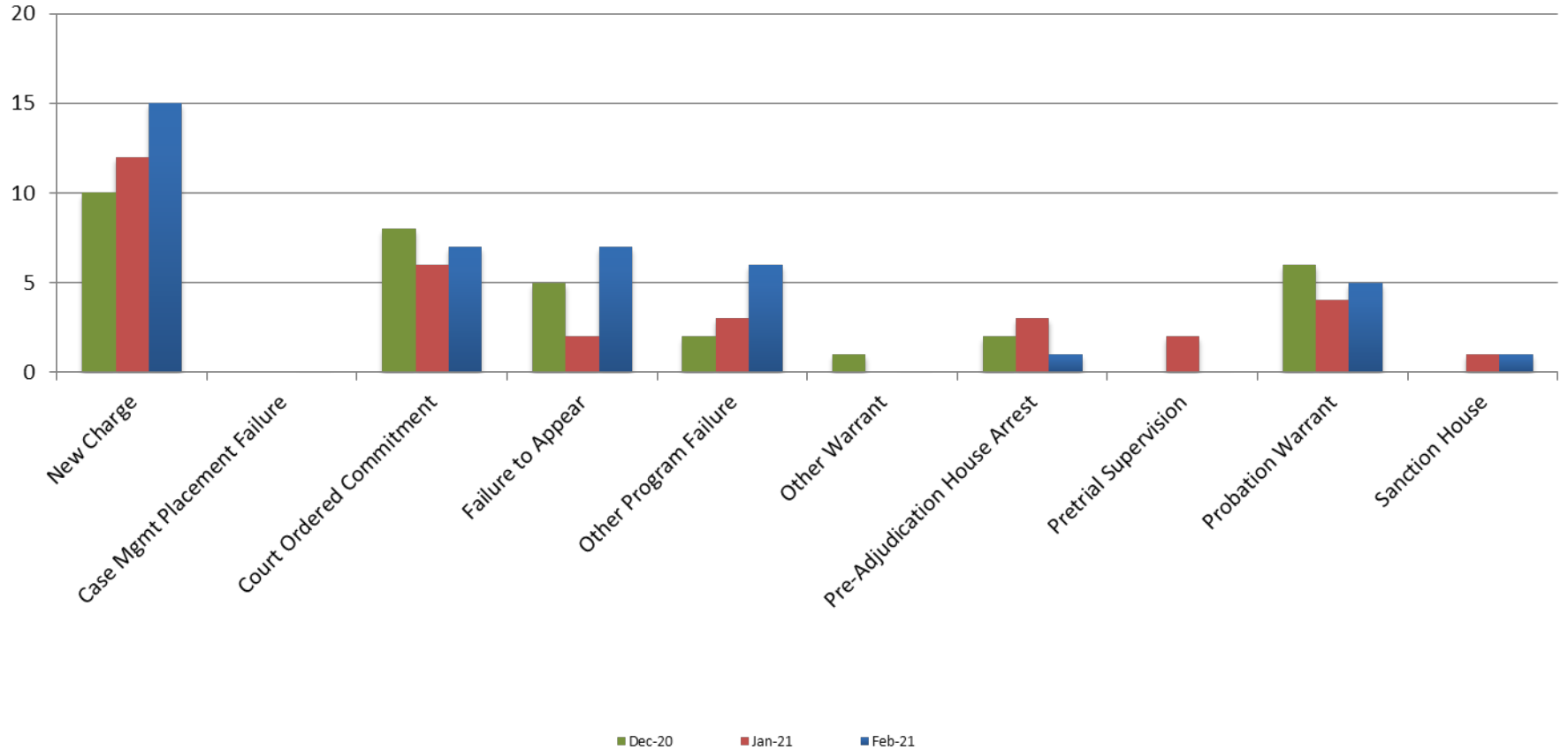
(data obtained from SG CO Division of Corrections)







# Reason for JDF Admits





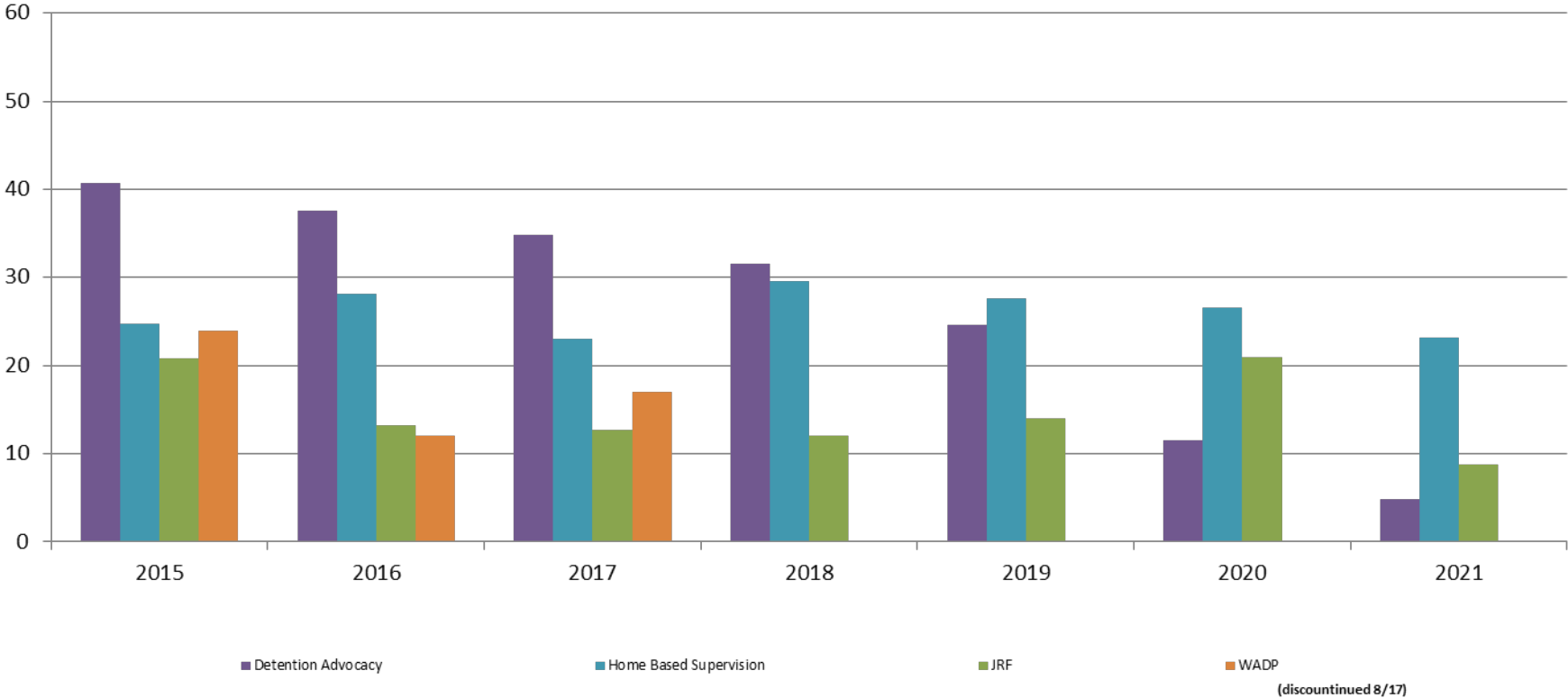
# Reason for JDF Admits

Reason	February 2020	February 2021
New Charges	9	15
Case Management Placement Failures	1	0
Court Ordered Commitment	9	7
Failure to Appear	2	7
Other Program Failure	4	6
Other Warrant	1	0
Pre-Adjudication House Arrest	5	1
Pretrial Supervision	1	0
Probation Warrant	8	5
Sanction House	3	1



# Juvenile Detention Alternatives

## ADP: February 2015 - present



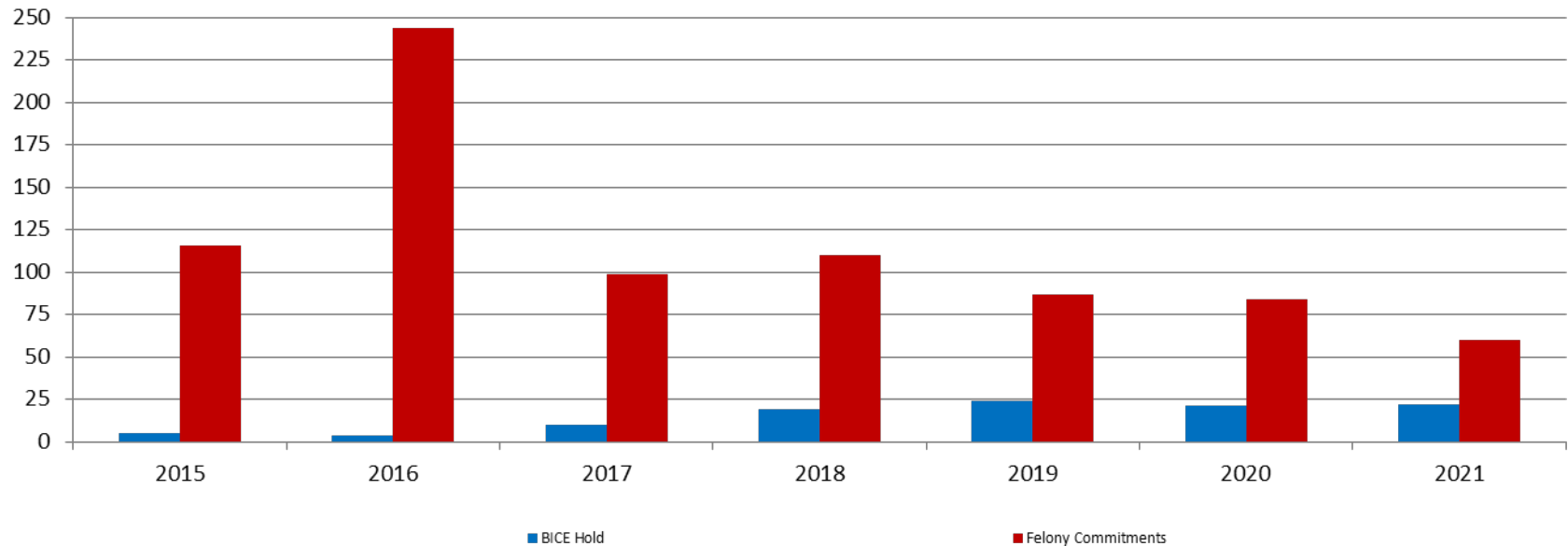
# Juvenile Detention Services

<b>February ADP</b>	<b>2018</b>	<b>2019</b>	<b>2020</b>	<b>2021</b>
Juvenile Detention Facility	49	45	43	42
Juvenile Residential Facility	12	14	21	9
Home Based Supervision	30	28	27	23
Detention Advocacy Case Management Services	32	25	12	5
Weekend Alternative Detention Program (total)	0	N/A	N/A	N/A

<b>February YTD AVERAGE</b>	<b>2018</b>	<b>2019</b>	<b>2020</b>	<b>2021</b>
Juvenile Detention Facility	50	48	48	38
Juvenile Residential Facility	13	15	20	9
Home Based Supervision	28	30	25	22
Detention Advocacy Case Management Services	33	27	13	5
Weekend Alternative Detention Program	0	N/A	N/A	N/A

# Monthly Jail Snapshot: December 2020

## Snapshots February 2015 - present



<b>BICE Hold</b>	<b>2015</b>	<b>2016</b>	<b>2017</b>	<b>2018</b>	<b>2019</b>	<b>2020</b>	<b>2021</b>
<b>February</b>	5	4	10	19	24	21	22

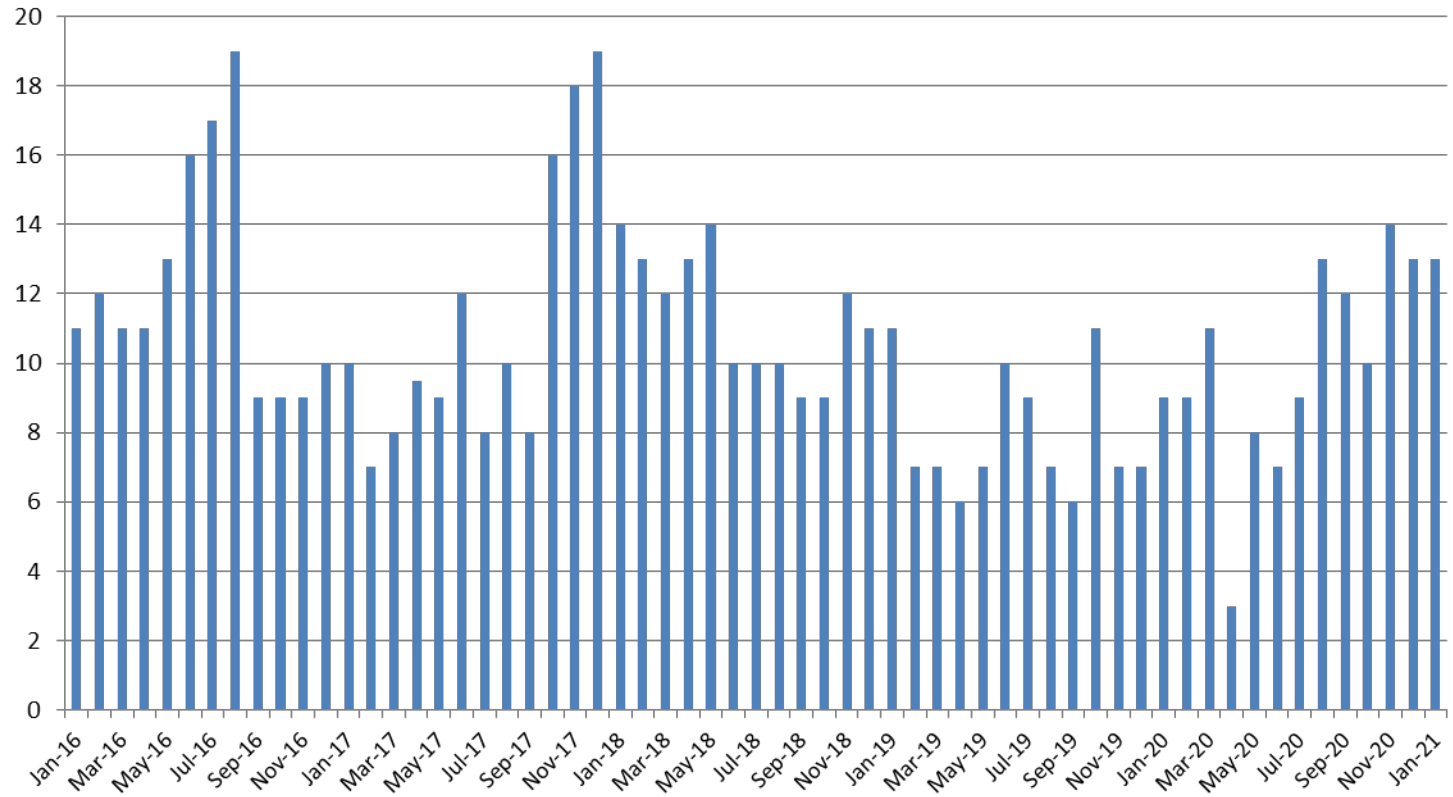
<b>Felony Commitments</b>	<b>2015</b>	<b>2016</b>	<b>2017</b>	<b>2018</b>	<b>2019</b>	<b>2020</b>	<b>2021</b>
<b>February</b>	116	244	99	110	87	84	60





# Journal Entry Completion (Average Days)

## January 2016 - present



January	2016	2017	2018	2019	2020	2021
Avg. Days	11	10	14	11	9	13
YTD Avg.	11	10	14	11	9	13

