

Criminal Justice Coordinating Council

Population Report & Program Trends

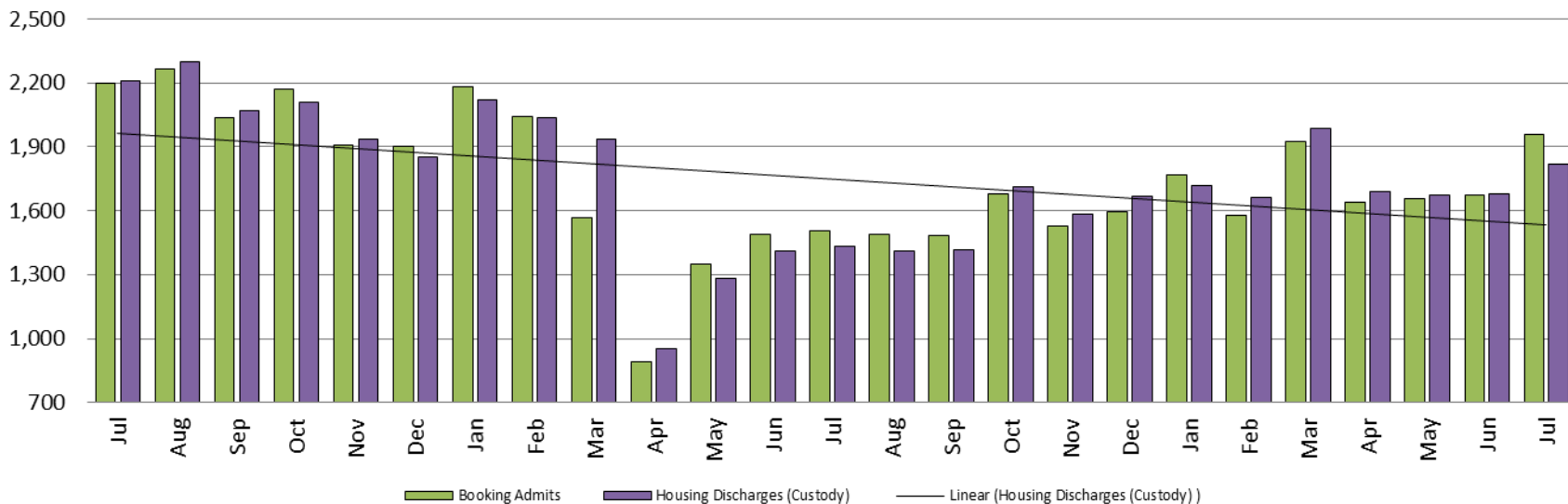
July 2021



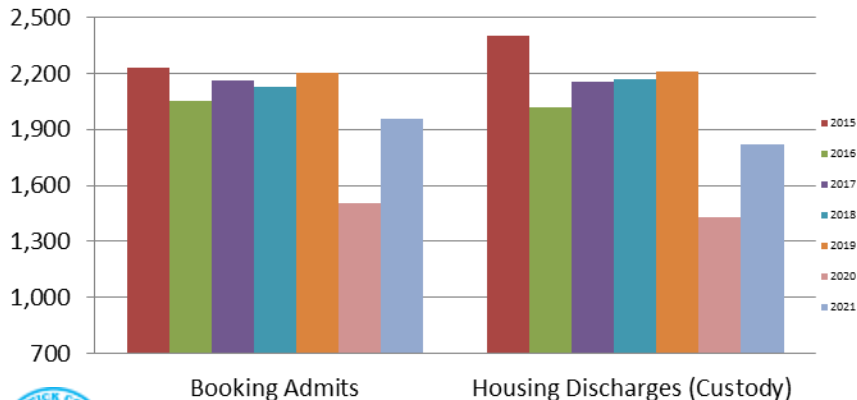
Sedgwick County...
working for you

Detention Facility

Booking Admits & Housing Discharges from Custody July 2019 - present



Bookings Year over Year: Month of July

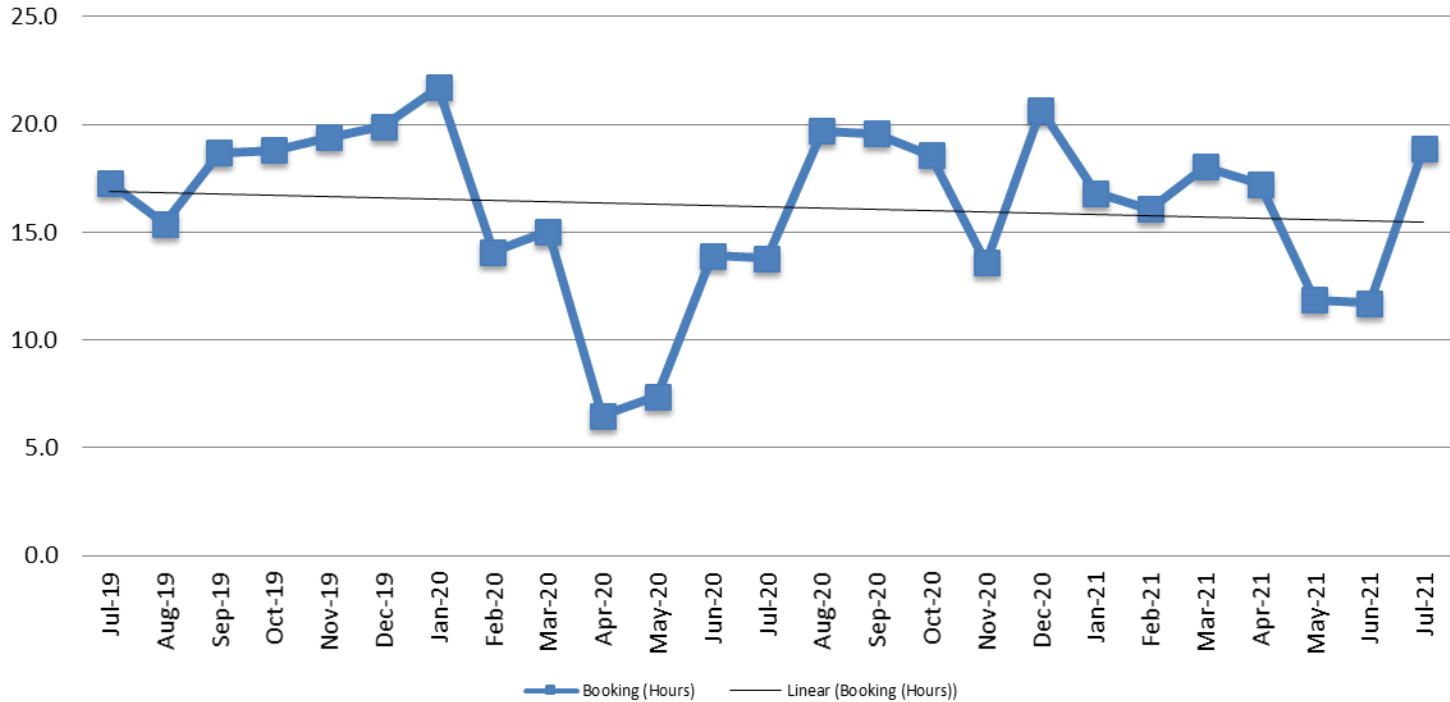


Bookings July	Housing Discharges July
2019: 2,200	2019: 2,208
2020: 1,507	2020: 1,432
2021: 1,955	2021: 1,817



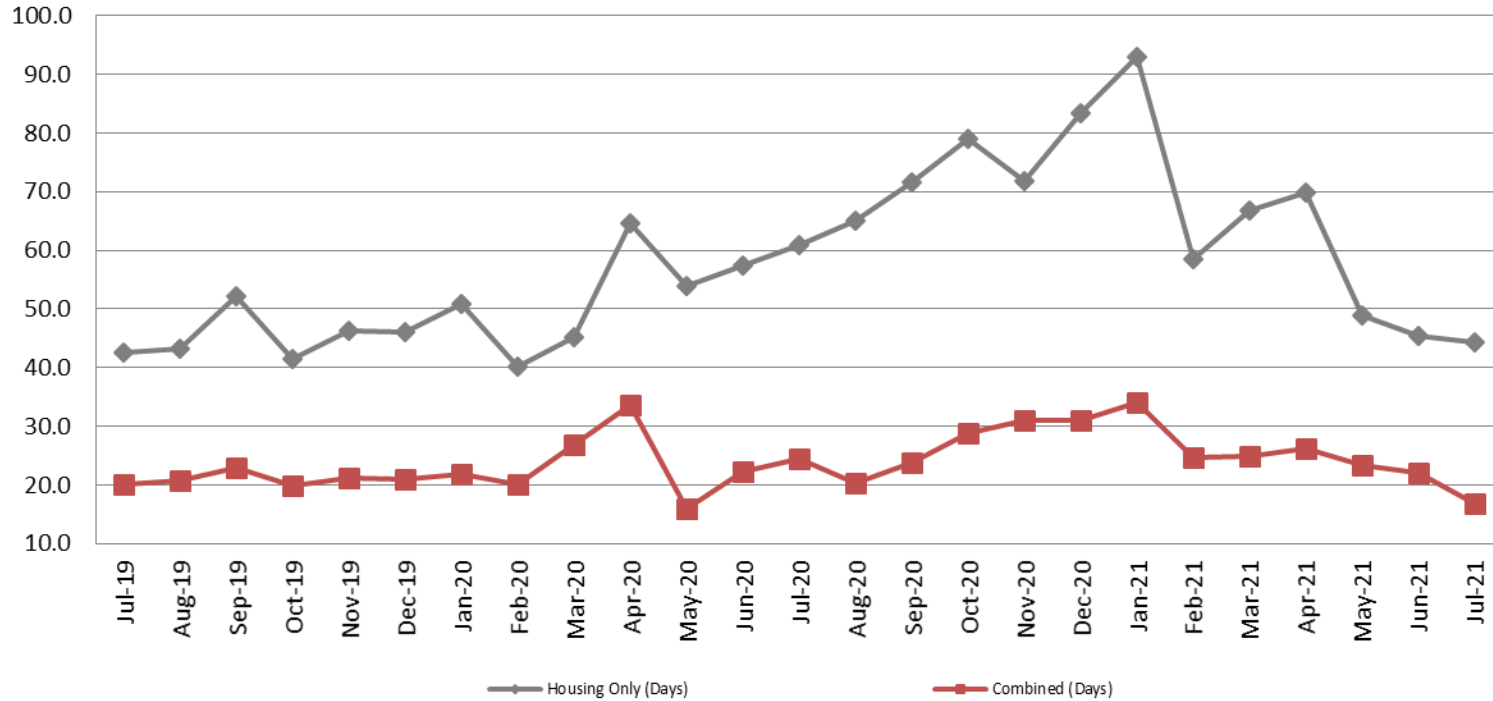
Sedgwick County...
working for you

Average Length of Stay: Booking (Hours) July 2019 - present



July	July YTD Average
2019: 17.3	2019: 13.4
2020: 13.8	2020: 13.2
2021: 18.9	2021: 15.8

Average Length of Stay: Housing & Combined (Days) July 2019 - present

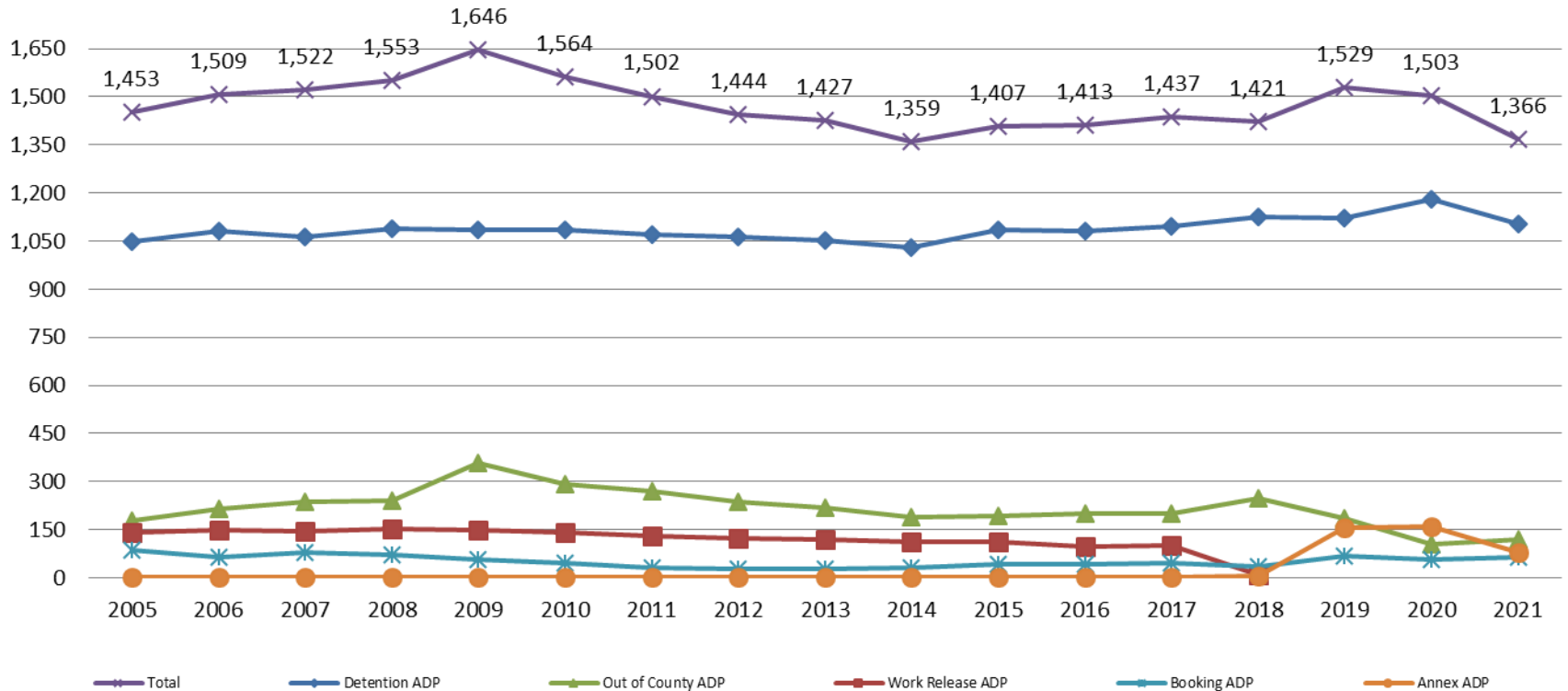


Month Year	Housing Only	Housing YTD AVG	Combined Days	Combined YTD AVG
July 2019	42.6	39.3	20.0	20.3
July 2020	61.0	53.3	24.5	23.6
July 2021	44.3	60.9	16.9	24.6

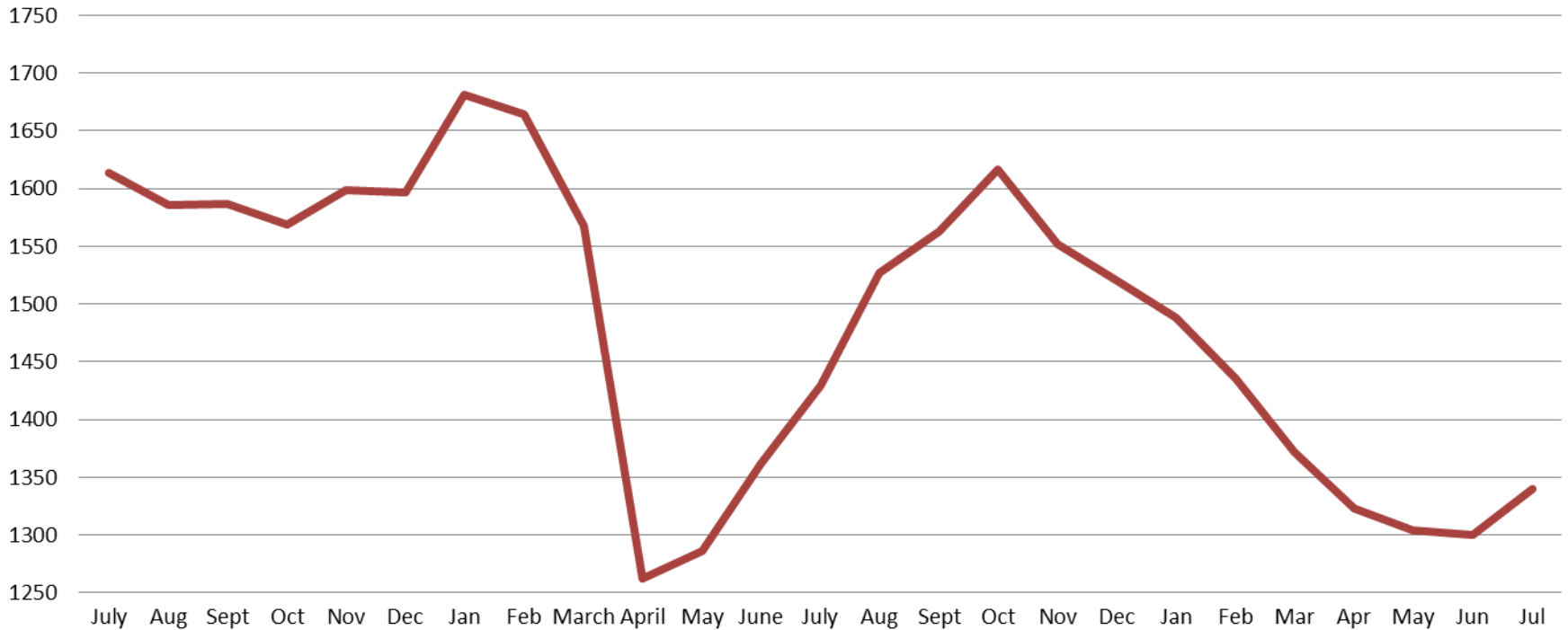


Jail: Annual Average Daily Population (ADP)

TRENDS: Booking, Detention, Work Release, & Out of County Annual ADP: 2005 - present

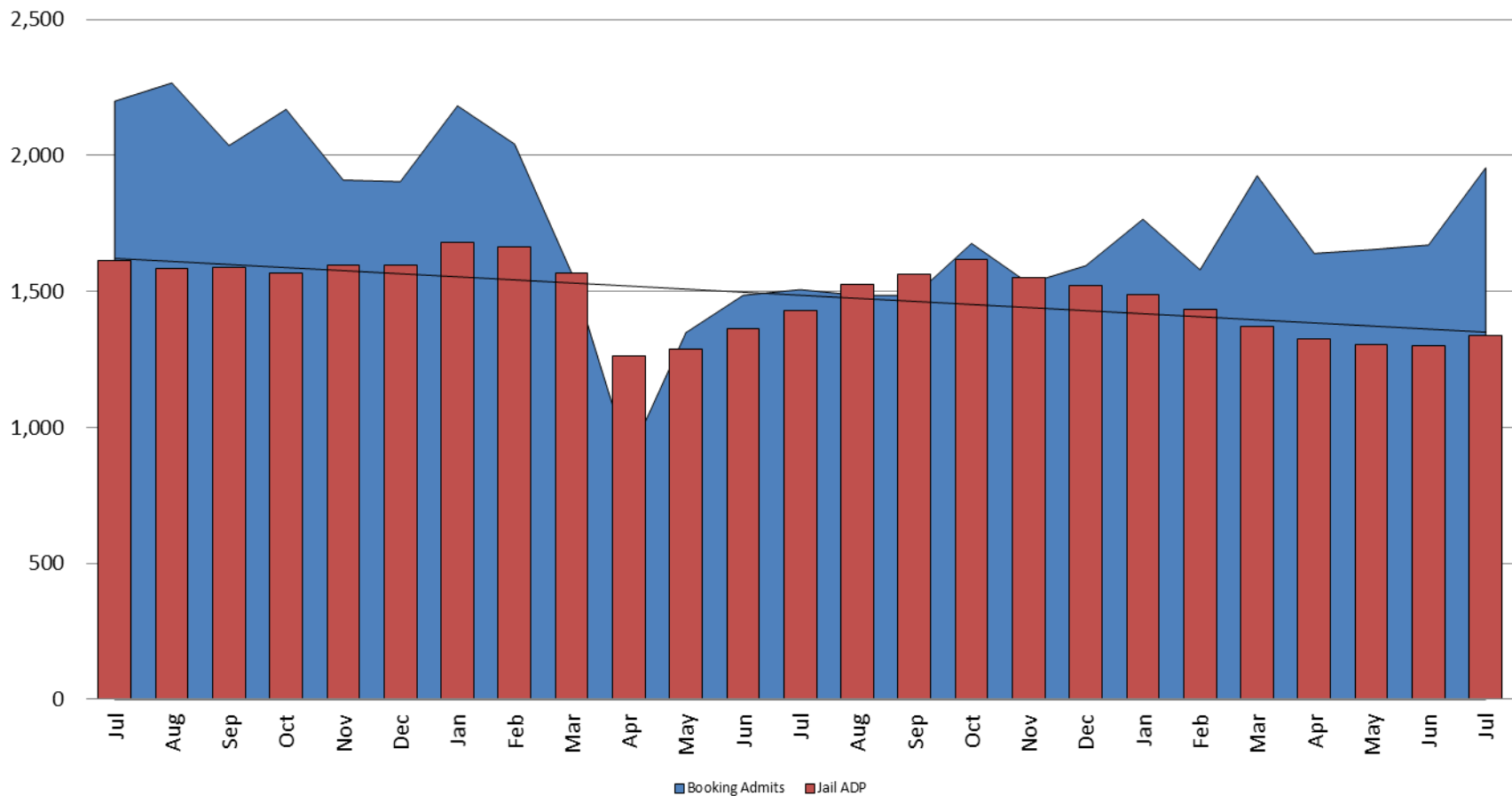


TOTAL MONTHLY ADP: JAIL (Booking, Detention Facility, Annex, & Out of County) July 2019 - present



July 2019	July 2020	July 2021
1,614	1,430	1,340

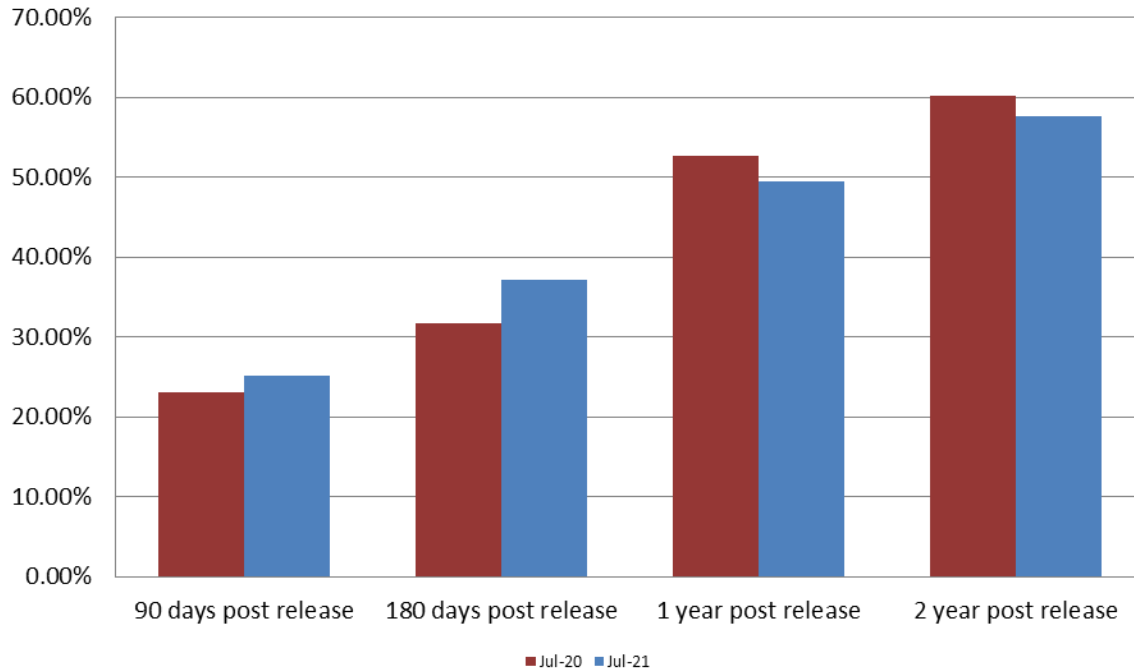
Booking Admits & Total Monthly ADP (Jail): July 2019 - present



Jail includes individuals in booking, detention, work release and out-of county (combined)
(data obtained from detention facility)



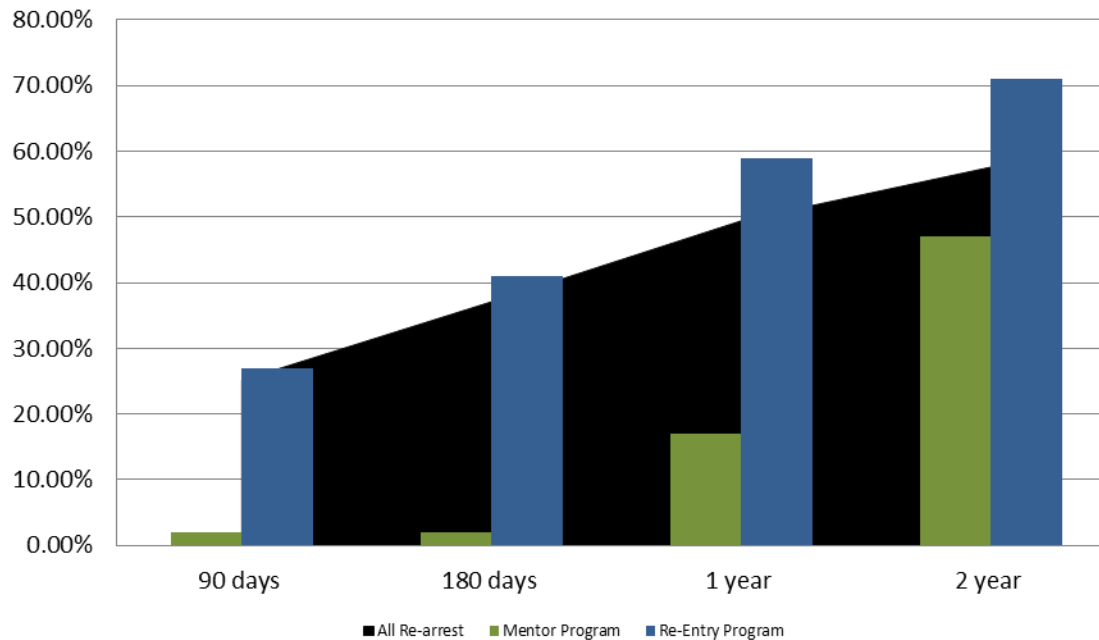
Percent of Released Inmates Rearrested July



Month Year	90 Days	180 Days	1 Year	2 Years
July 2020	22.99%	31.67%	52.63%	60.15%
July 2021	25.14%	37.10%	49.42%	57.59%

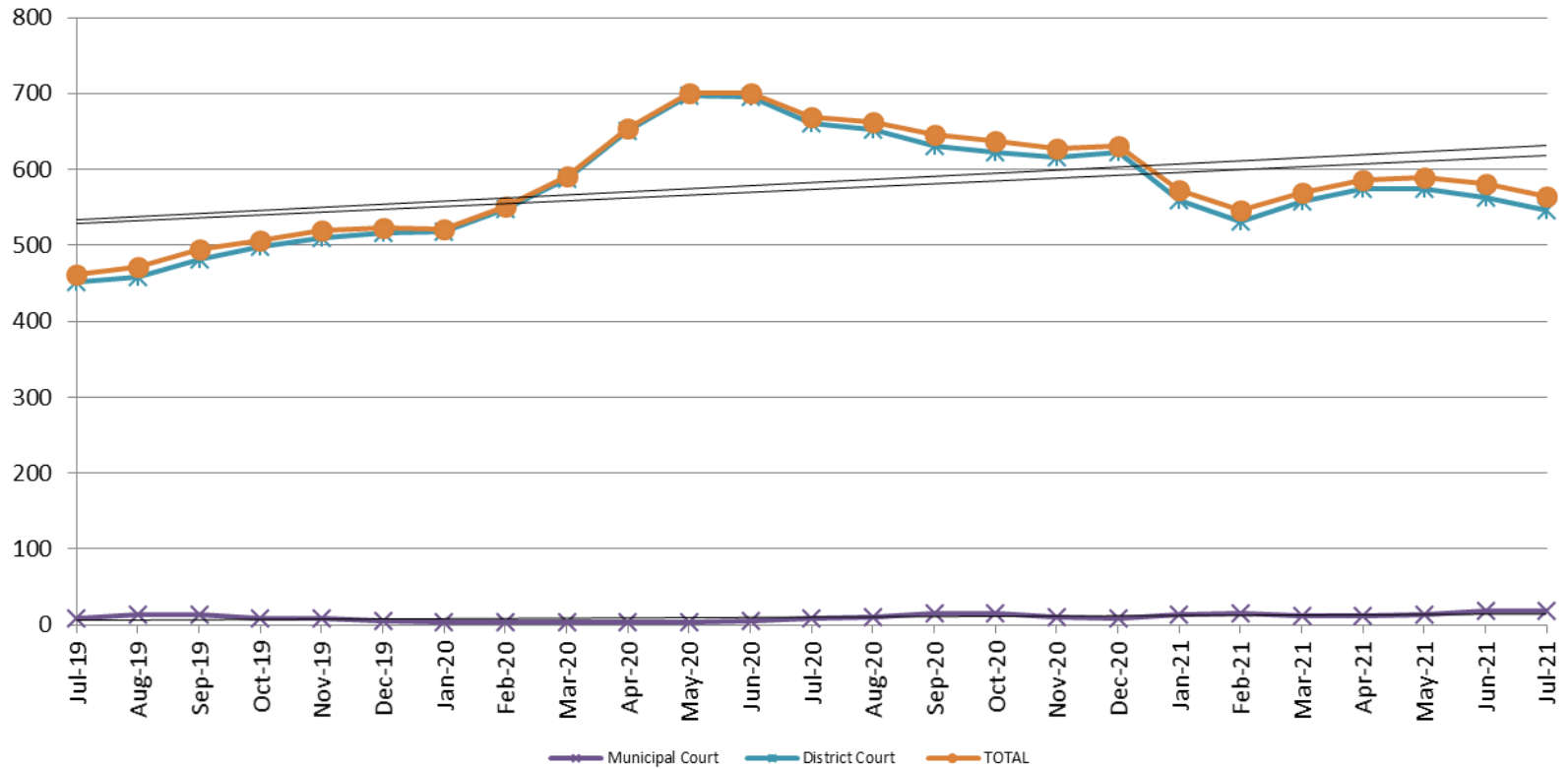


Recidivism by Programs July 2021



July 2021	90 Days	180 Days	1 year	2 years
All Re-arrests	25.14%	37.10%	49.42%	57.59%
Mentor Program	2%	2%	17%	47%
Re-Entry Program	27%	41%	59%	71%

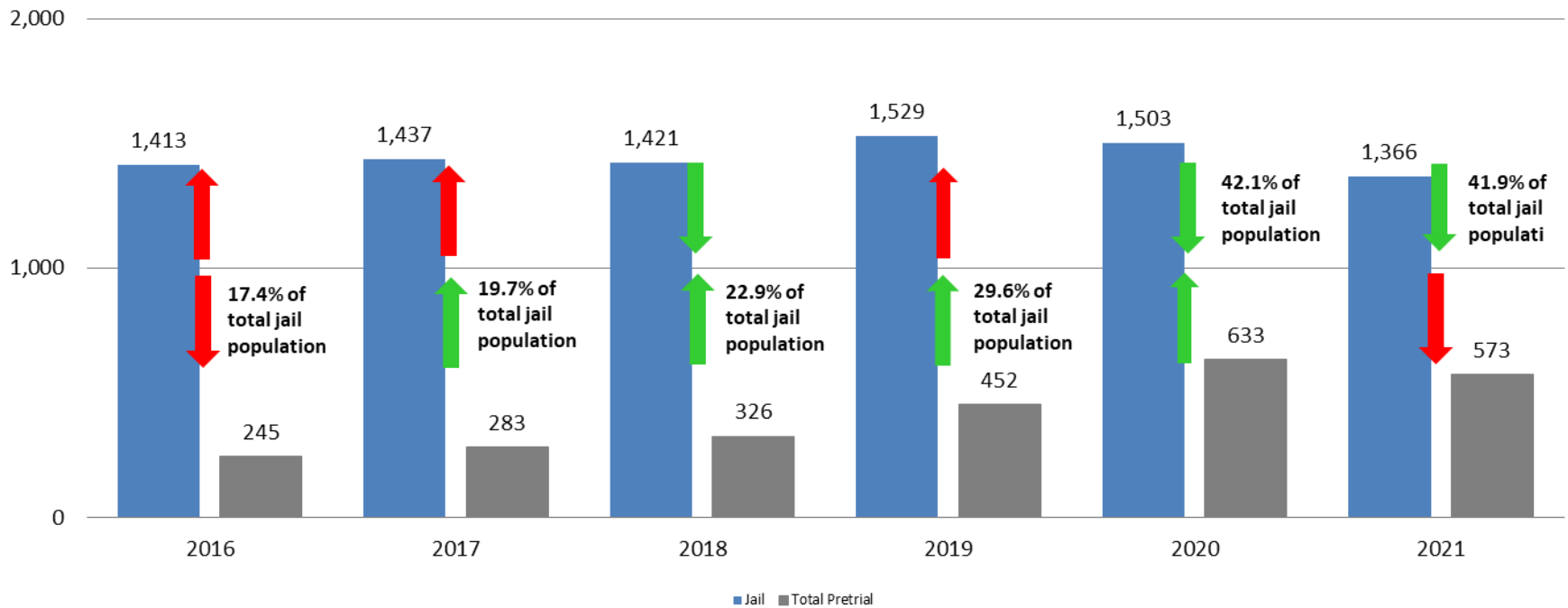
Pretrial Services Program (PSP) Monthly ADP: July 2019 - present



July	2019 ADP	2020 ADP	2021 ADP	2019 YTD Avg.	2020 YTD Avg.	2021 YTD Avg.
Muni. Court	9	8	18	13	4	14.7
Dist. Court	452	661	546	402	622	557.9
Total	461	669	564	416	627	572.7

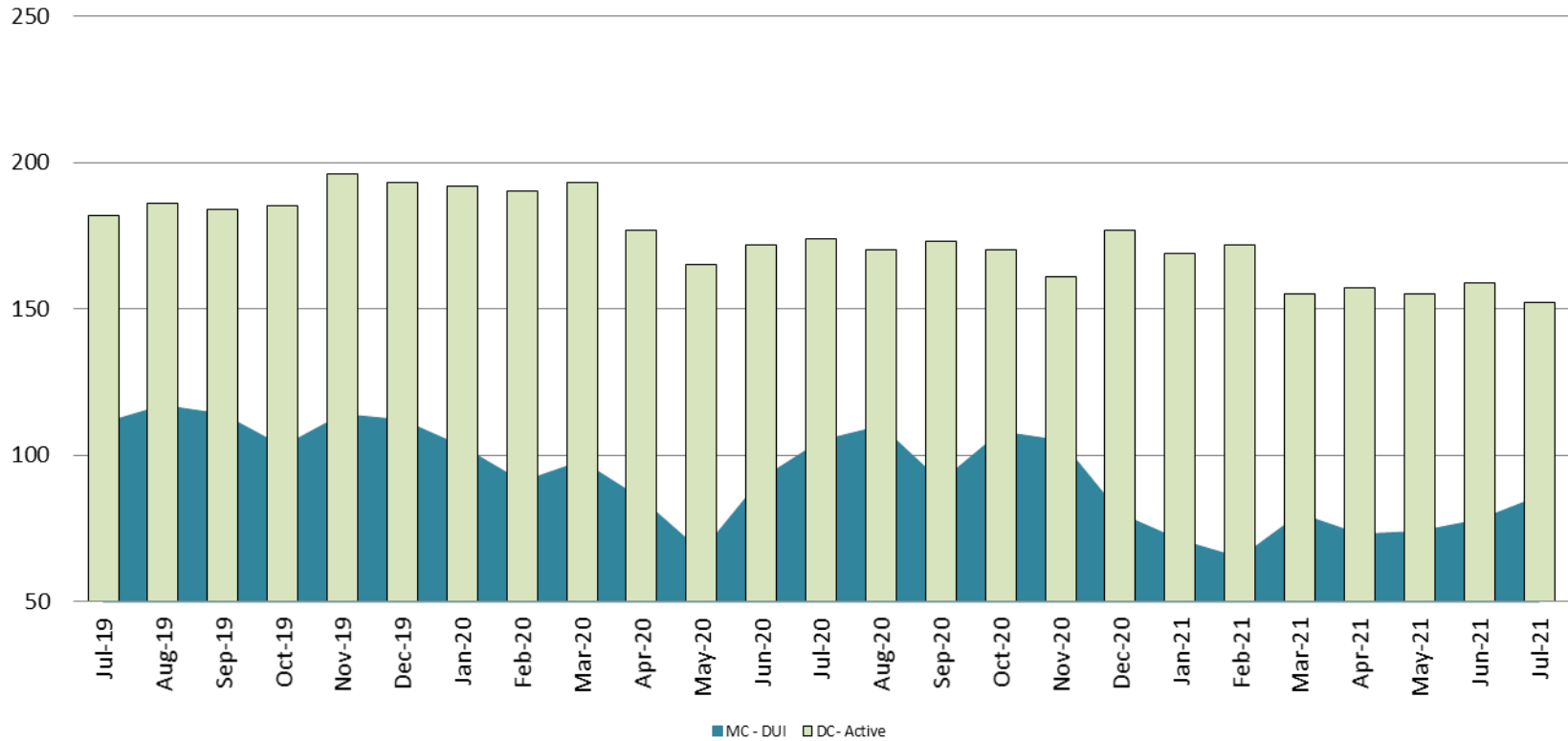
Correlation: Total & PSP

Total Annual ADP: 2016 - present



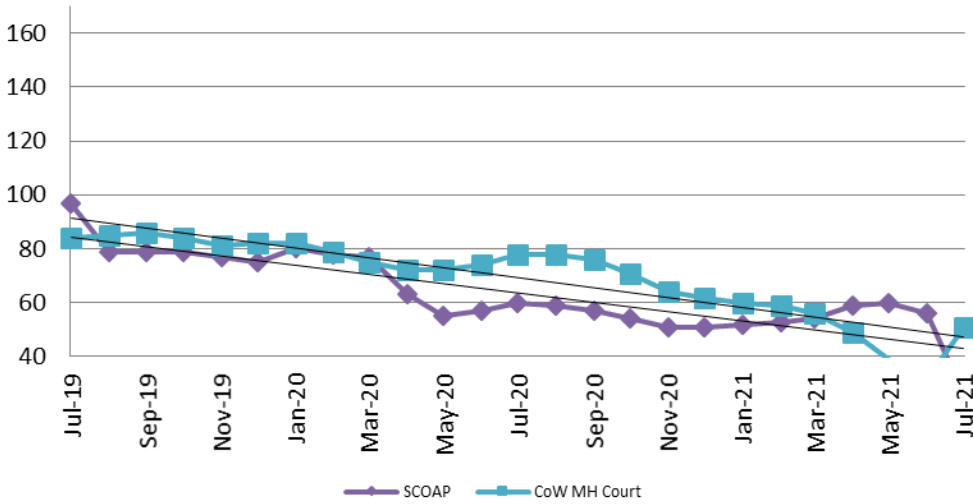
Diversion - Active Caseload

July 2019 - present

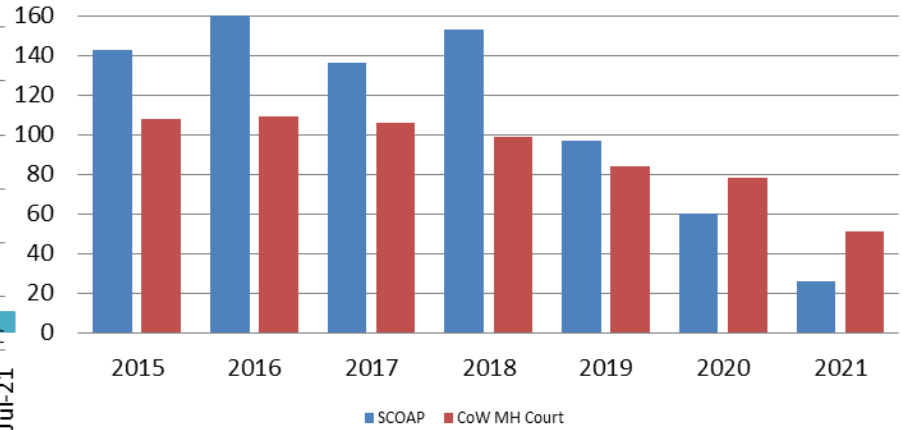


July	2019	2020	2021	2019 YTD Avg.	2020 YTD Avg.	2021 YTD Avg.
Muni. Court- DUI	111	105	86	100	92	75
Dist. Court- Active	182	174	152	192	180	160

Mental Health - ADP July 2019 - present

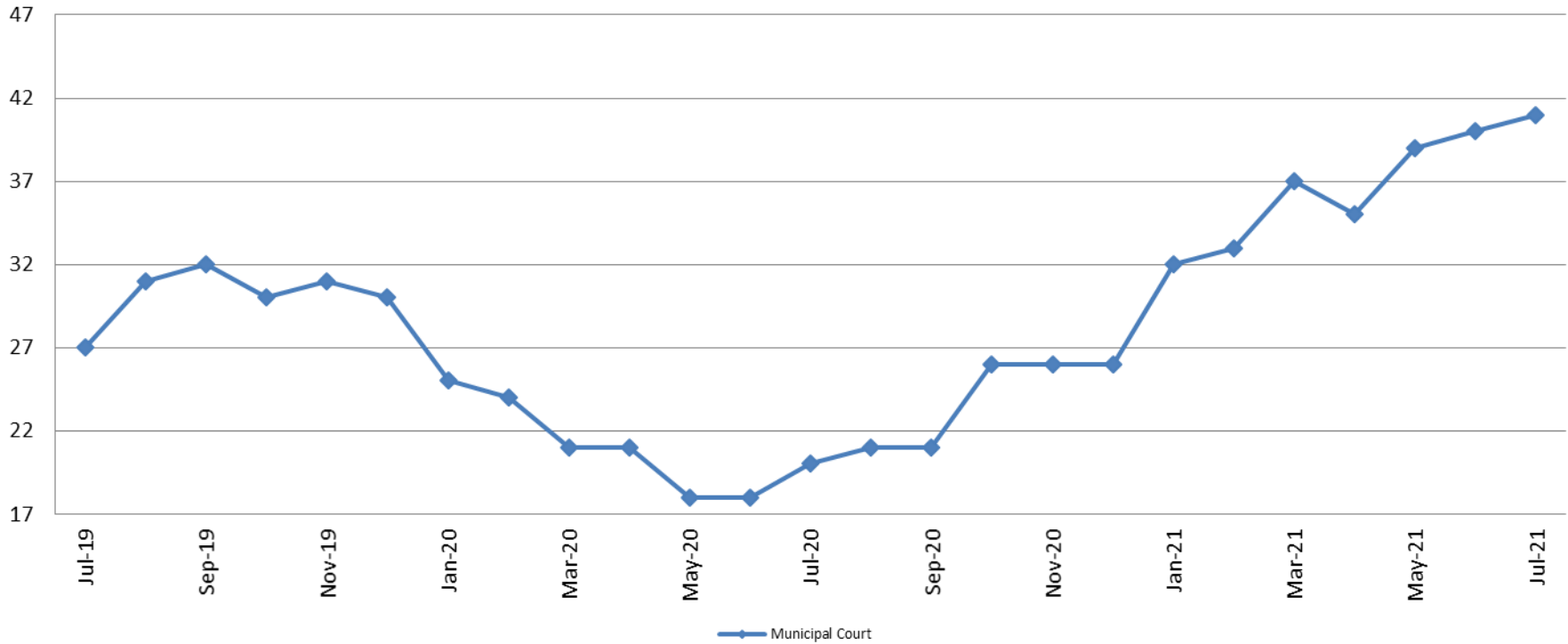


Mental Health ADP Year over Year - July



July	2019 ADP	2020 ADP	2021 ADP	2019 YTD Avg.	2020 YTD Avg.	2021 YTD Avg.
SCOAP	97	60	26	113	67	51
MH Court	84	78	51	101	76	49

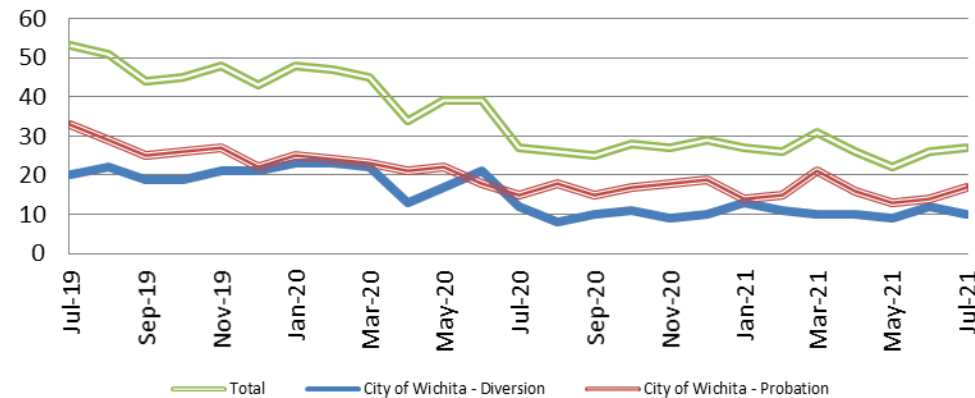
Day Reporting - Active Caseload July 2019 - present



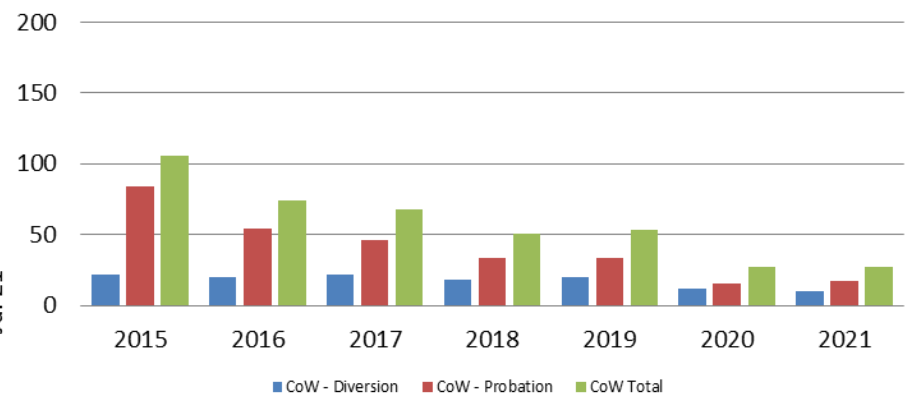
July	2016	2017	2018	2019	2020	2021
Muni. Court	40	45	28	27	20	41
Muni. Court YTD Avg.	46	35	35	30	21	37



Drug Court - City of Wichita ADP: July 2019 - present



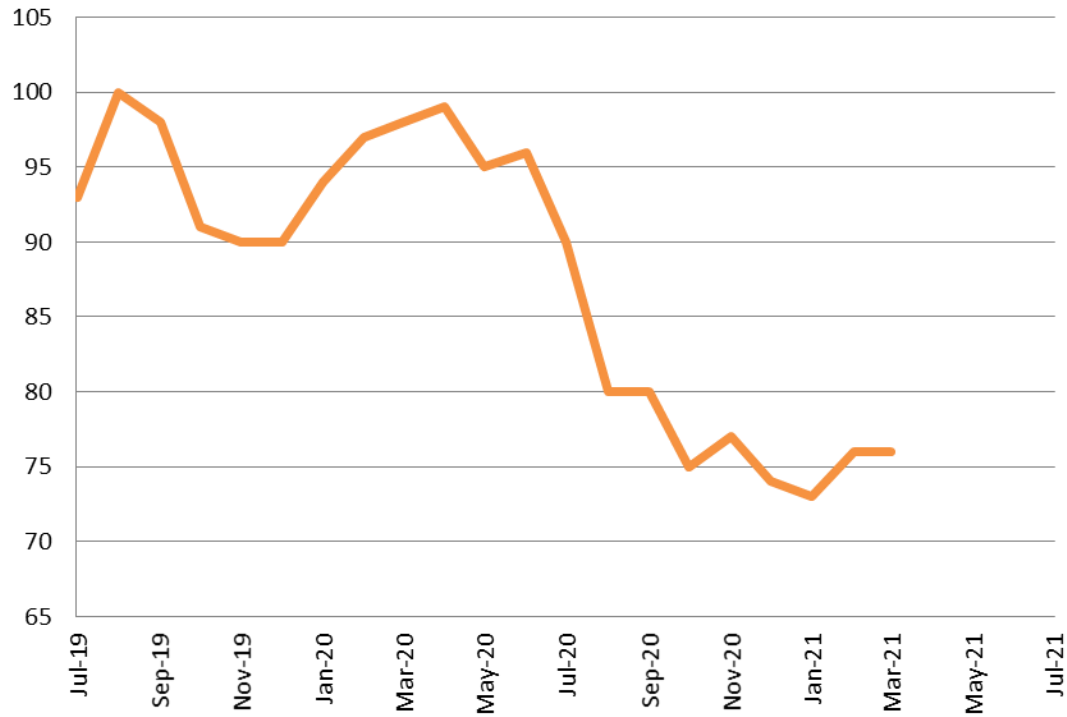
Drug Court- City of Wichita Year over Year - July



July	2019	2020	2021
Diversion	20	12	10
Probation	33	15	17
Total	53	27	27



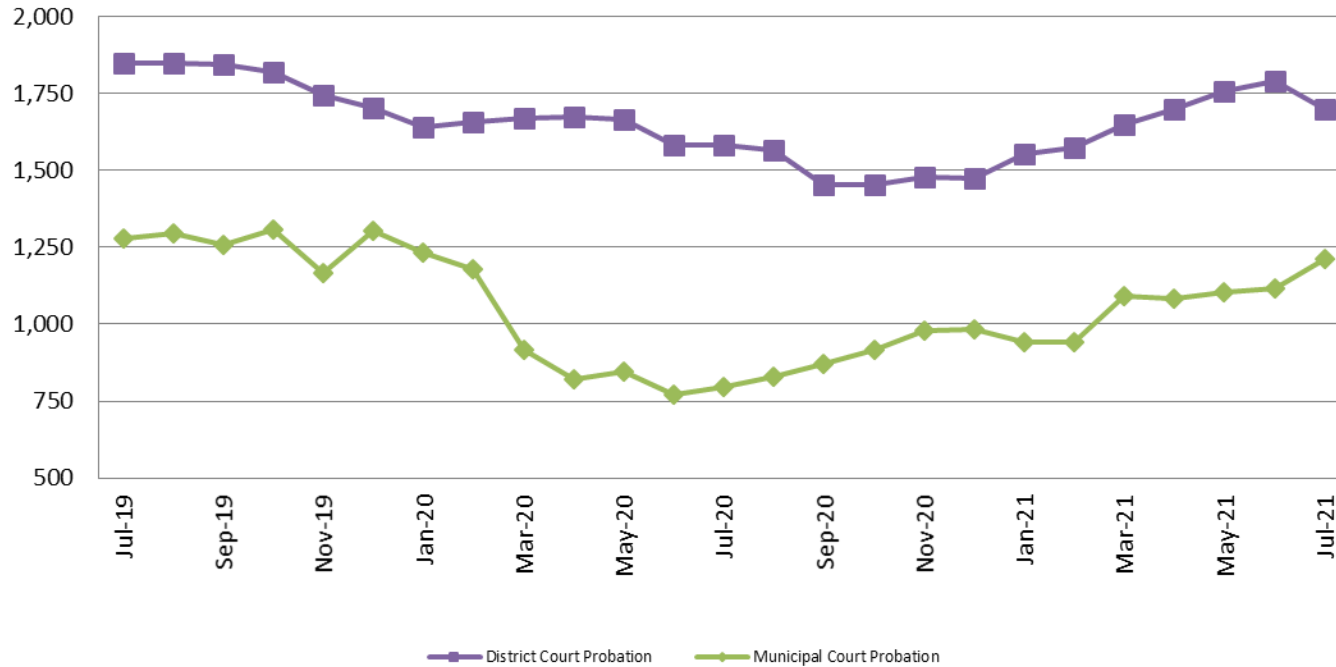
Drug Court - Sedgwick County ADP: July 2019 - present



	July	2019	2020	2021
Sedg. Co. ADP		93	90	N/A
YTD Avg.		99	96	N/A



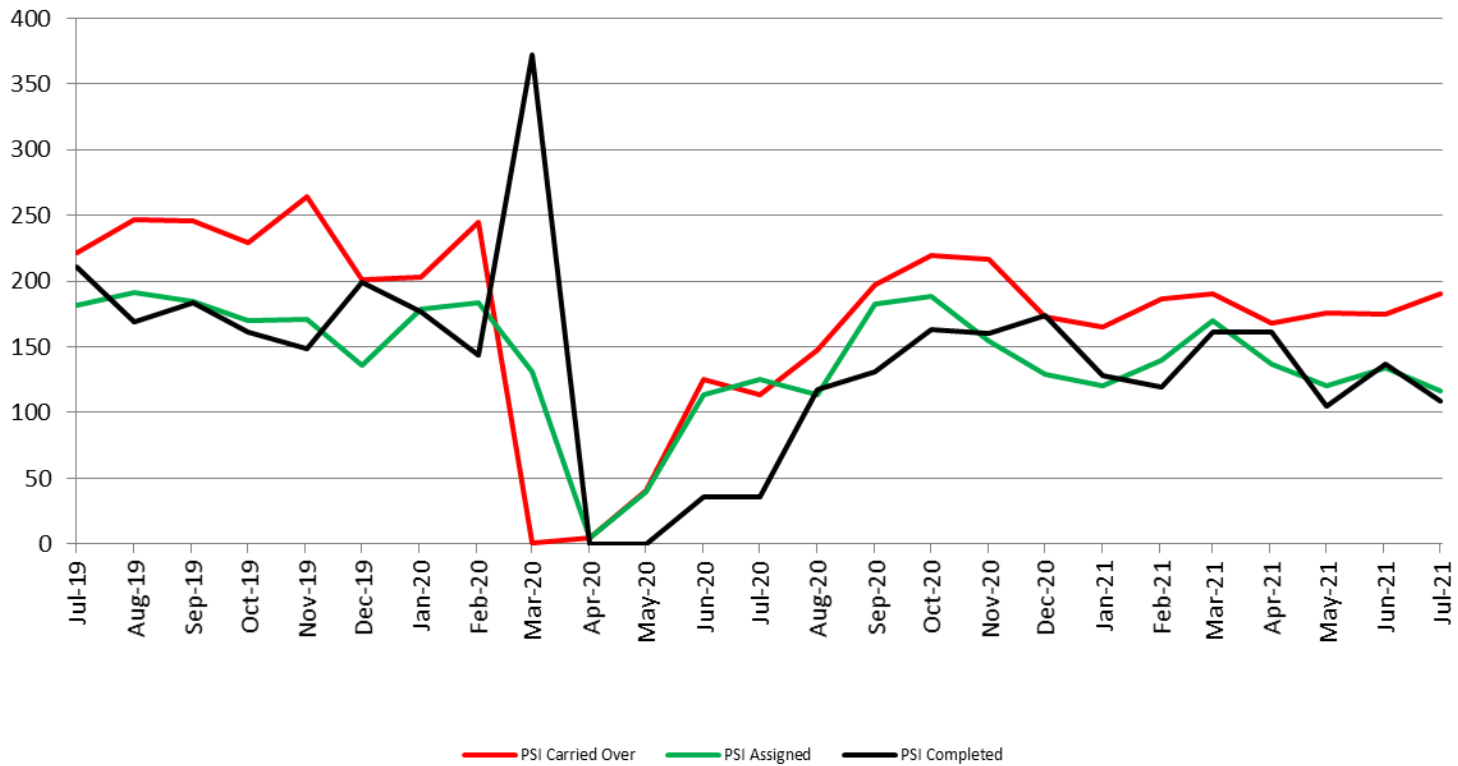
Probation - Active Caseloads July 2019 - present



July	2019	2020	2021	2019 YTD Avg.	2020 YTD Avg.	2021 YTD Avg.
Dist. Court Probation	1,847	1,580	1,700	1,928	1,637	1,674
Muni. Court Probation	1,280	797	1,211	1,246	937	1,069



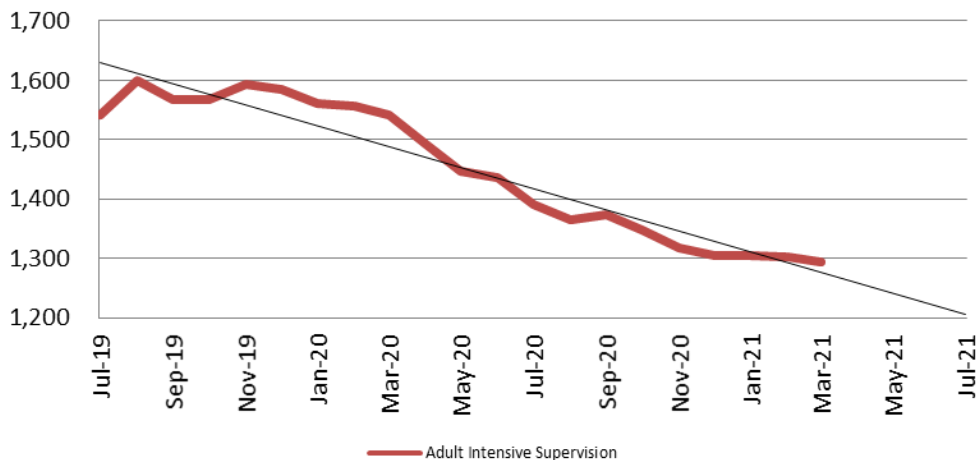
District Court Probation: Pre-Sentence Investigation July 2019 - present



July	2019	2020	2021
Carried Over	221	114	190
Assigned	182	125	116
Completed	211	36	109

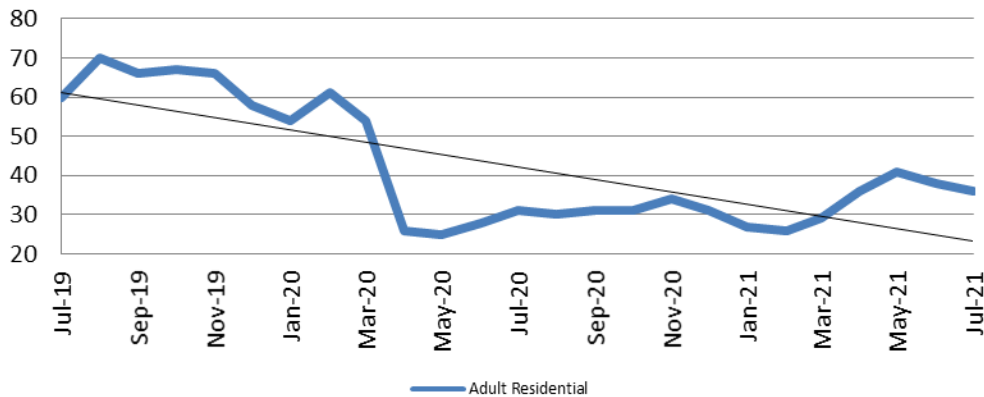
Community Corrections

**Adult Intensive Supervision Probation (AISP):
ADP July 2019 - present**



Year	July	July YTD Avg.
2019	1,541	1,531
2020	1,390	1,489
2021	N/A	N/A

**Adult Residential: ADP
July 2019 - present**

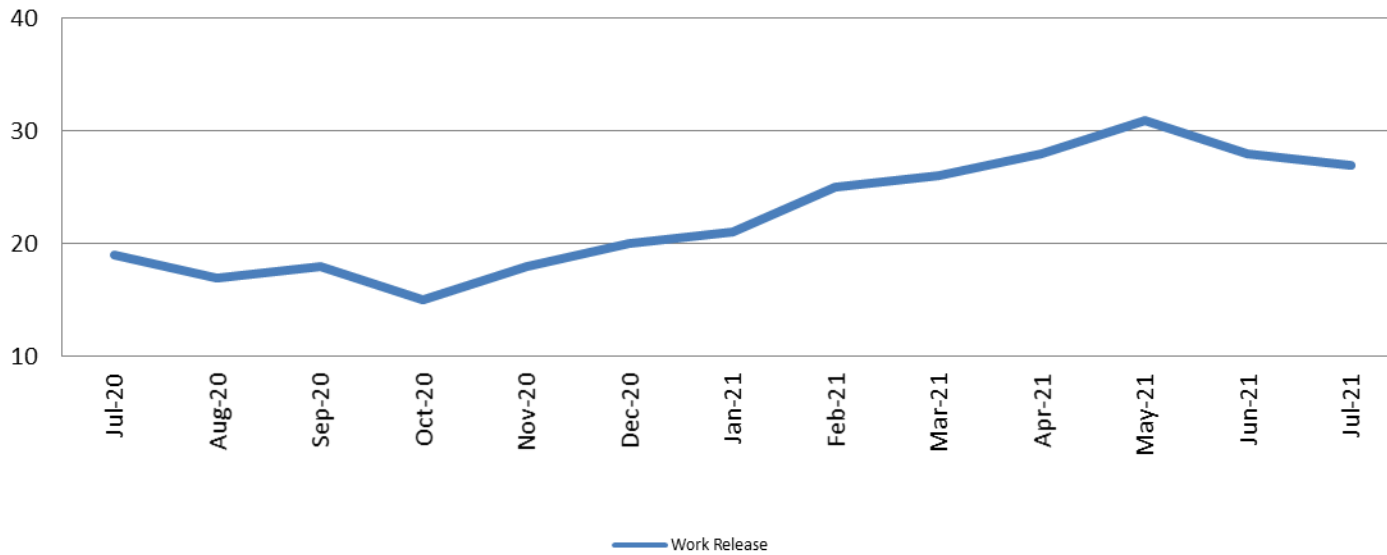


Year	July	July YTD Avg.
2019	60	64
2020	31	40
2021	36	33



Community Corrections

Work Release: ADP July 2020 - present

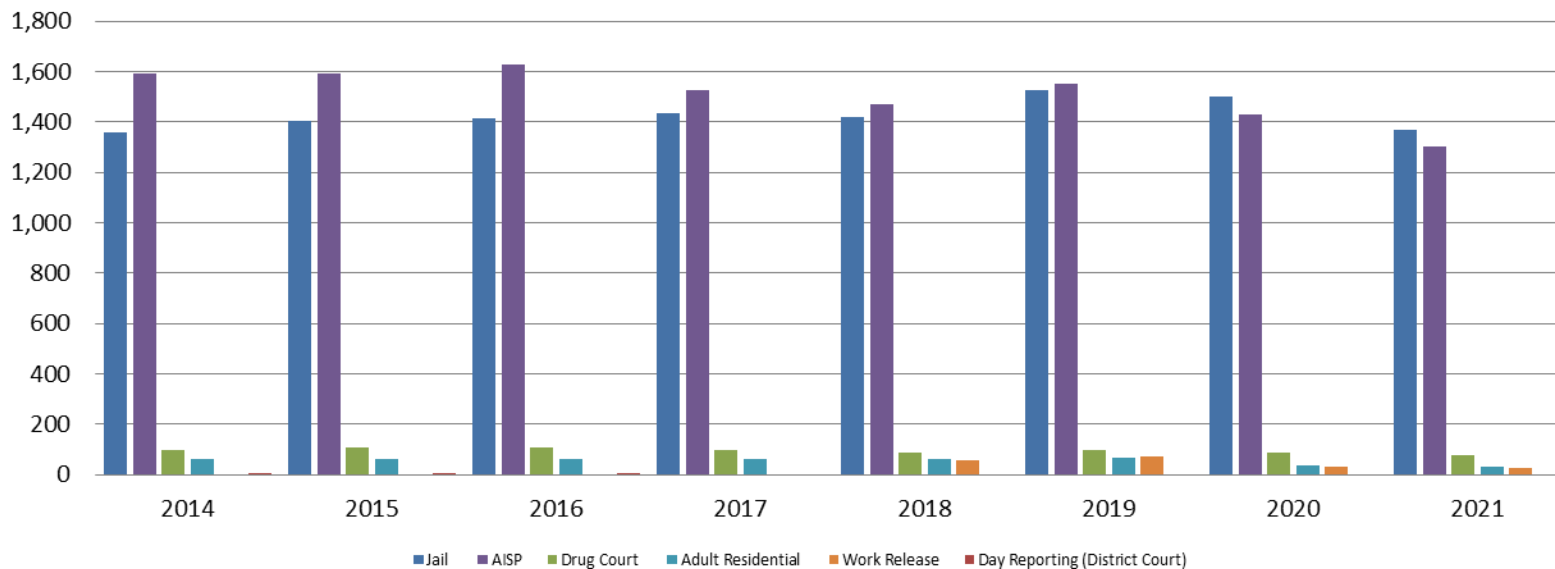


Month Year	Total	YTD Avg.
July 2020	19	39
July 2021	27	27



Correlation: Total & Sedgwick County Programs (Adult)

Total Annual ADP 2014 - present

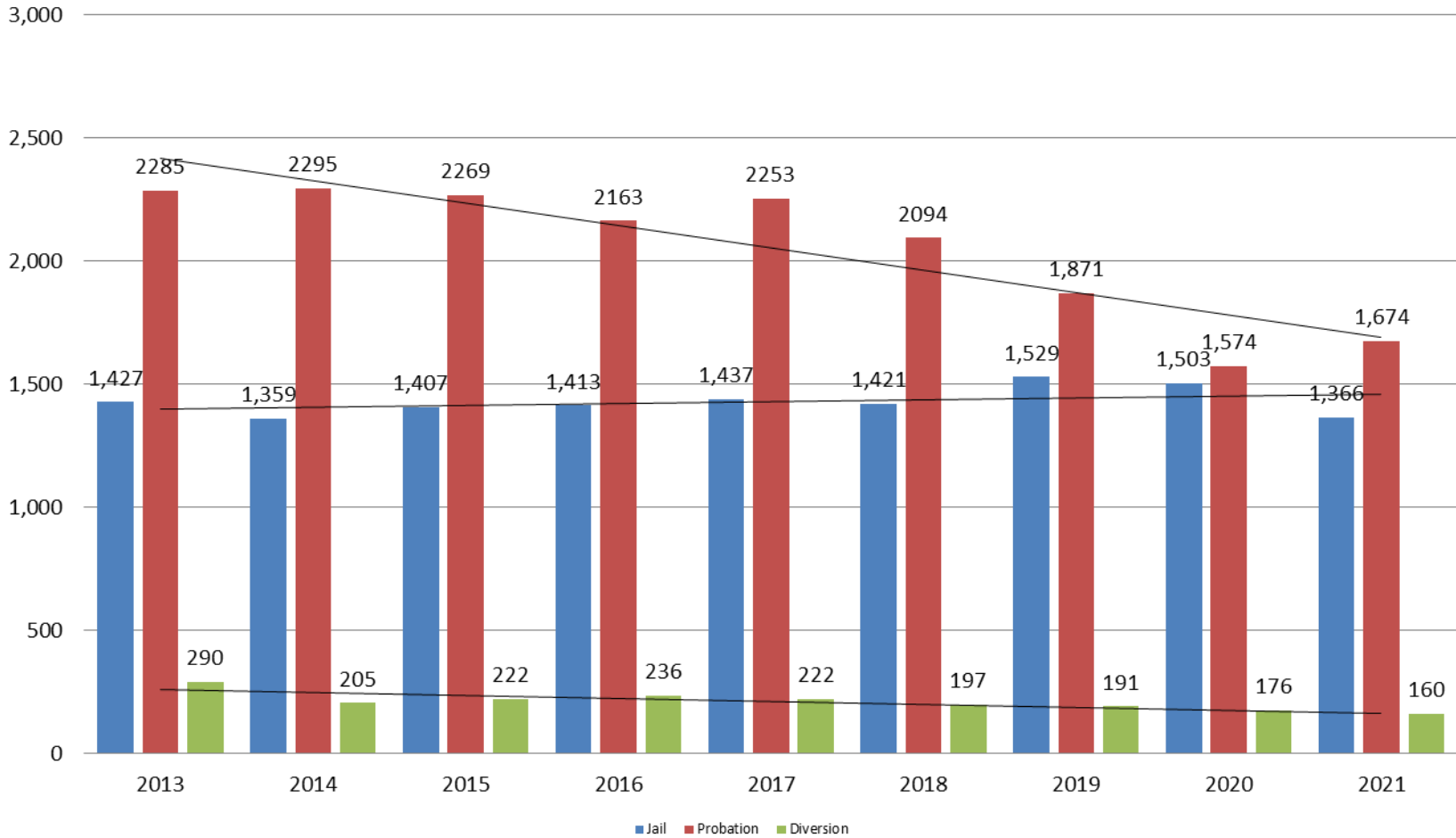


	2019	2020	2021
Jail	1,529	1,503	1,366
AISP	1,553	1,428	1,300
Drug Court	97	88	75
Adult Residential	65	36	33
Work Release	71	30	27
Day Reporting (DC)	0	0	0



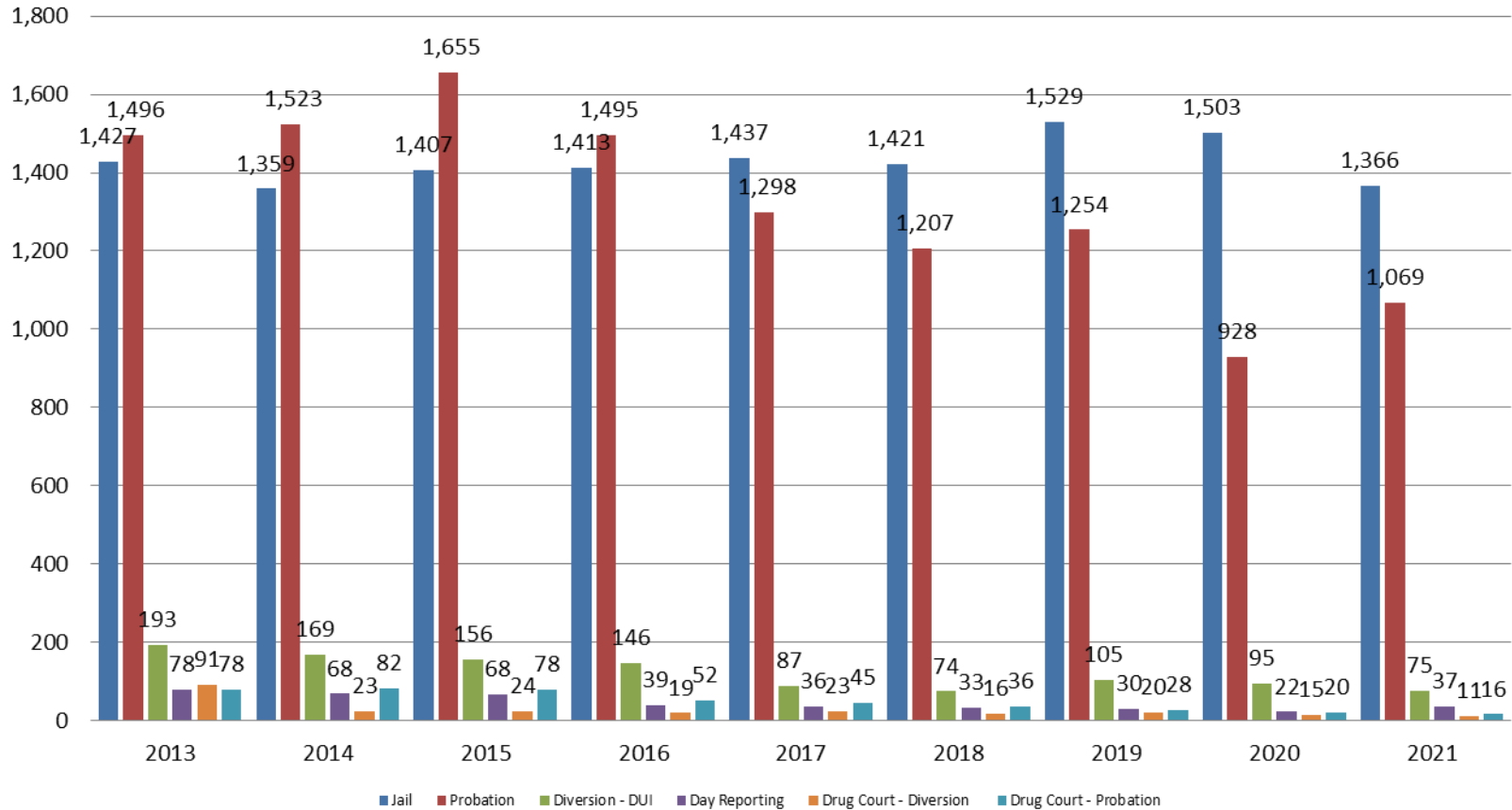
Correlation: Total & District Court Programs

Total Annual ADP: 2013 - present



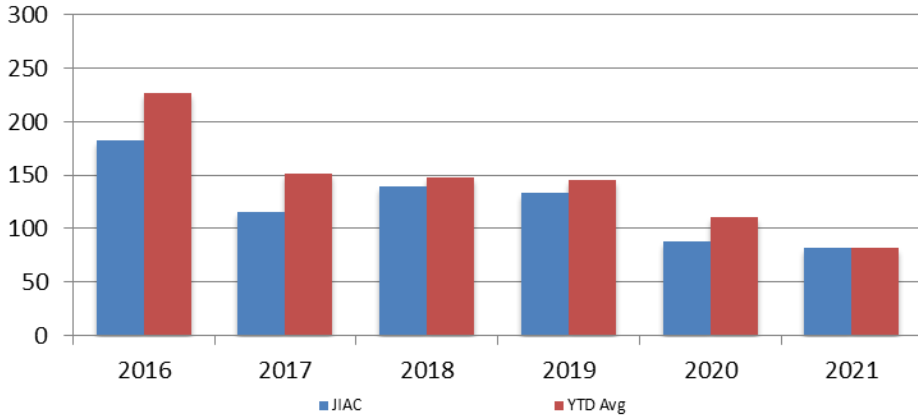
Correlation: Total & City of Wichita / Municipal Court Programs

Total Annual ADP: 2013 - present



Juvenile

**JIAC Intakes
July 2016 - present**

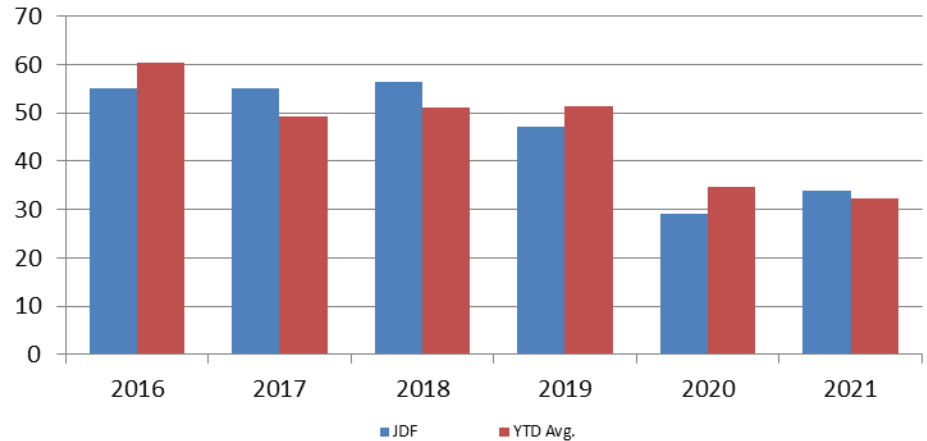


Year	July	July YTD Avg.
2016	182	227
2017	115	151
2018	139	148
2019	134	145
2020	88	111
2021	82	82

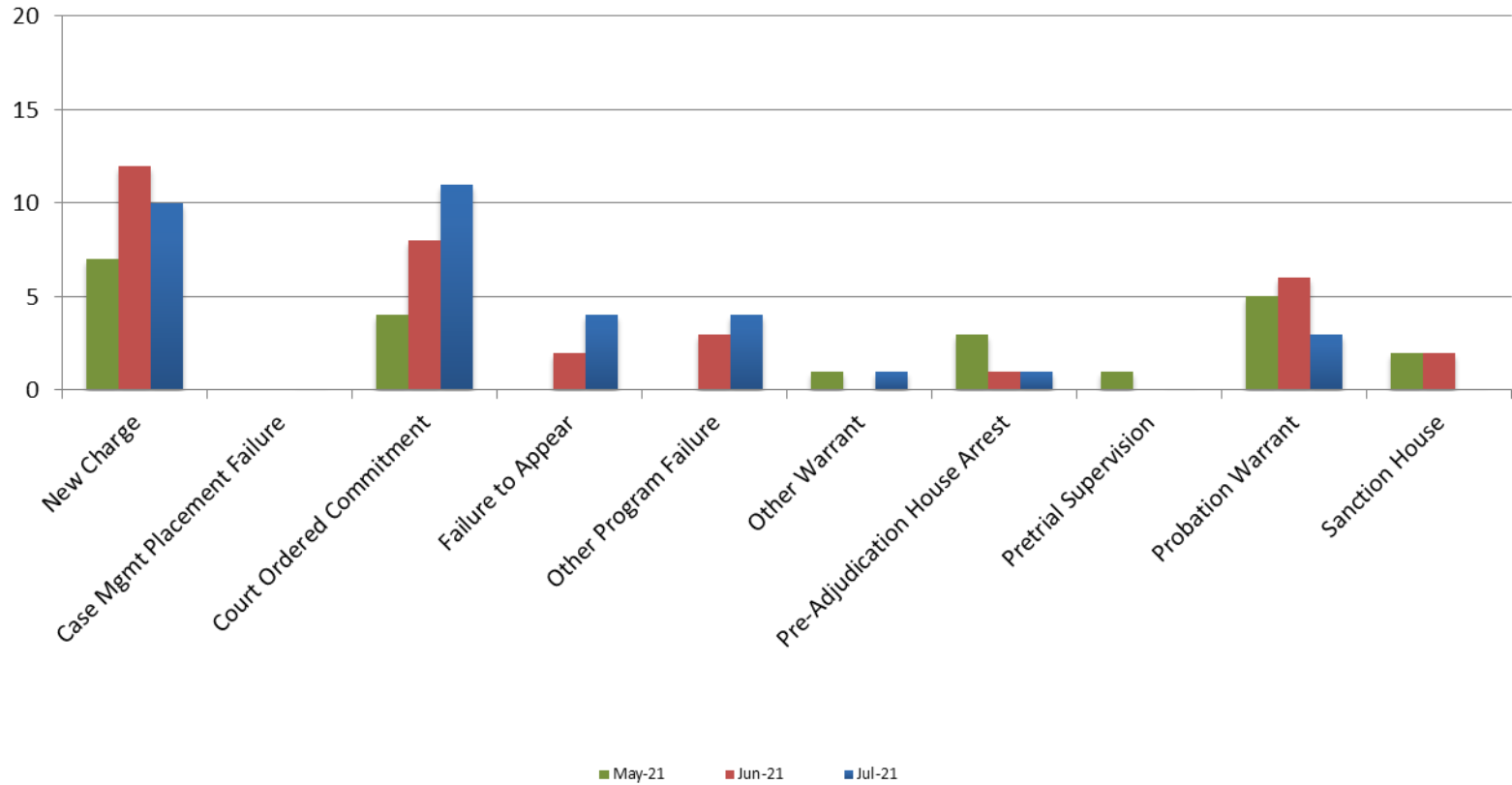
Year July July YTD Avg.

2016	55	60
2017	55	49
2018	56	51
2019	47	51
2020	29	35
2021	34	32

**JDF ADP
July 2016 - present**



Reason for JDF Admits



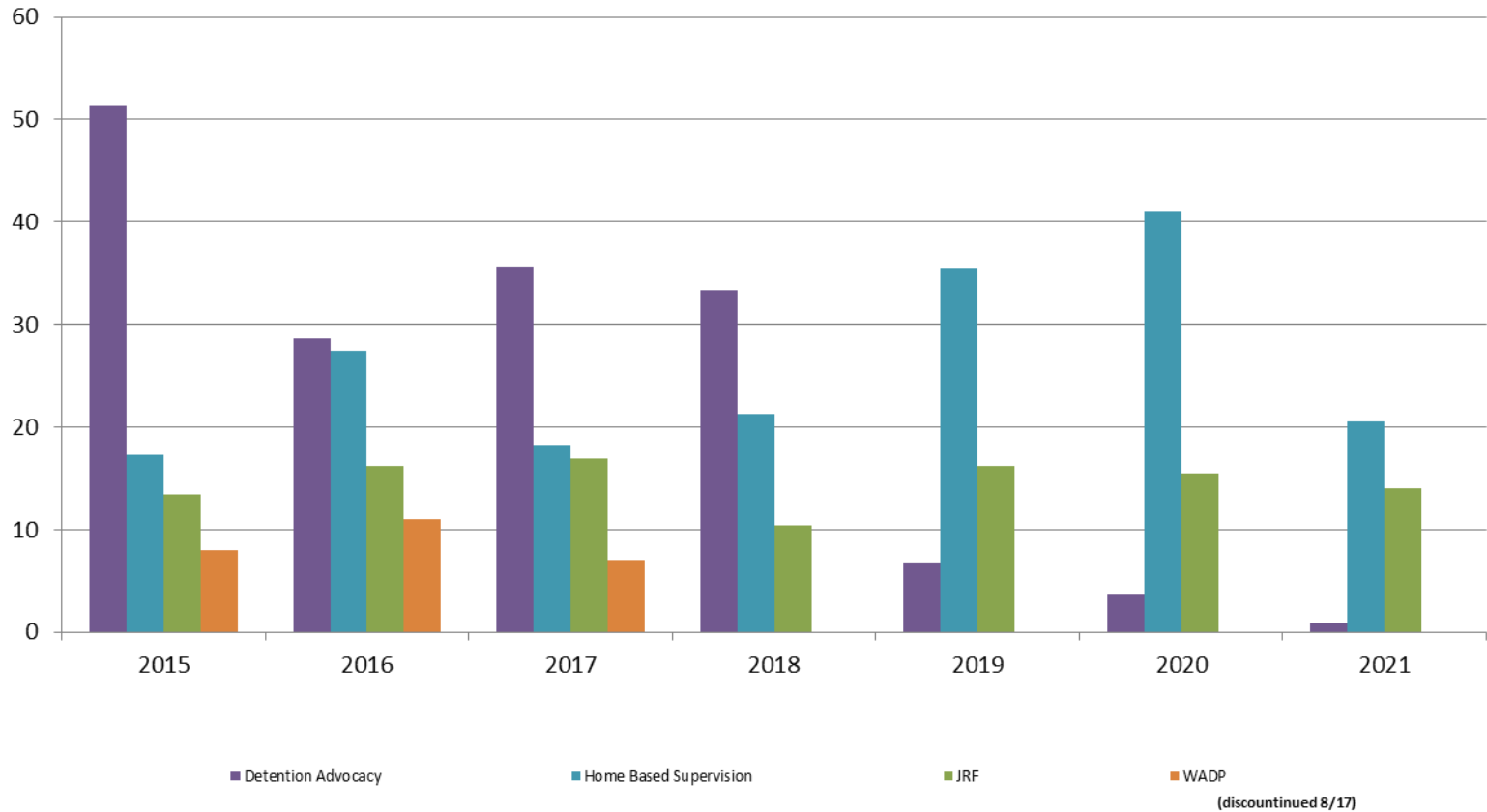
Reason for JDF Admits

Reason	July 2020	July 2021
New Charges	9	10
Case Management Placement Failures	0	0
Court Ordered Commitment	4	11
Failure to Appear	2	4
Other Program Failure	0	4
Other Warrant	2	1
Pre-Adjudication House Arrest	3	1
Pretrial Supervision	0	0
Probation Warrant	8	3
Sanction House	1	0



Juvenile Detention Alternatives

ADP: July 2015 - present



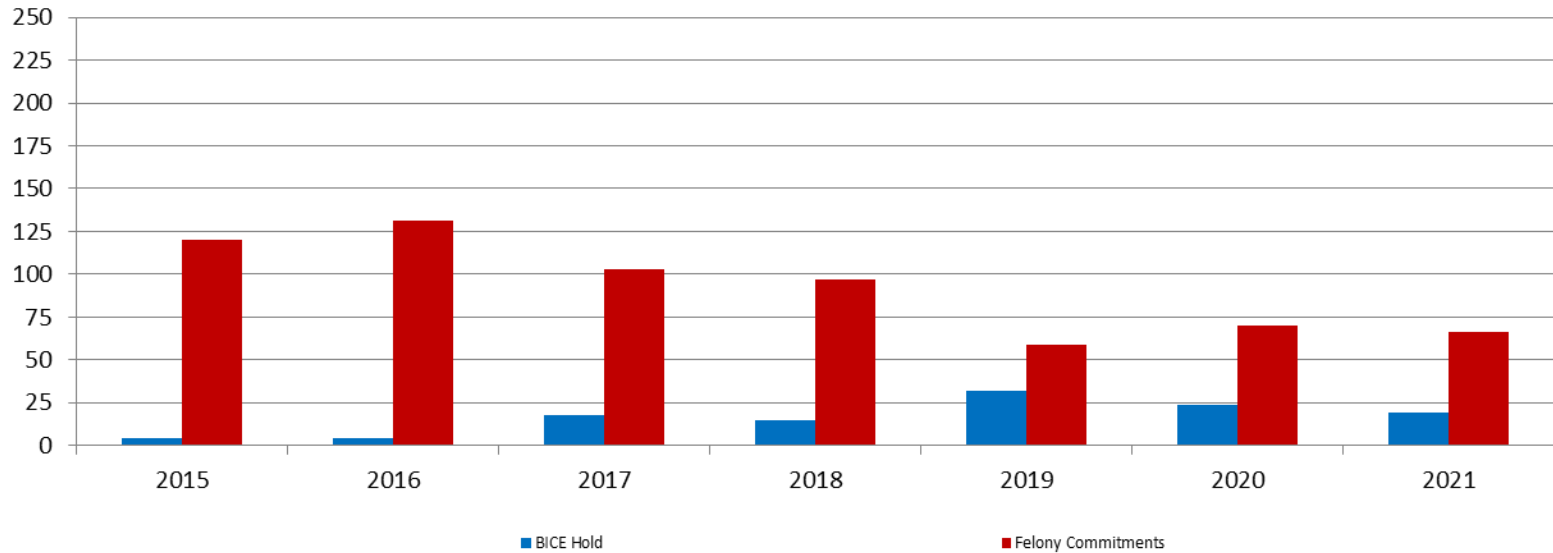
Juvenile Detention Services

July ADP	2018	2019	2020	2021
Juvenile Detention Facility	56	47	29	34
Juvenile Residential Facility	10	16	16	14
Home Based Supervision	21	36	41	21
Detention Advocacy Case Management Services	33	7	4	1
Weekend Alternative Detention Program (total)	0	N/A	N/A	N/A

July YTD AVERAGE	2018	2019	2020	2021
Juvenile Detention Facility	51	51	35	32
Juvenile Residential Facility	12	14	17	11
Home Based Supervision	26	28	29	23
Detention Advocacy Case Management Services	32	24	12	4
Weekend Alternative Detention Program	0	N/A	N/A	N/A

Monthly Jail Snapshot: July 2021

Snapshots July 2015 - present

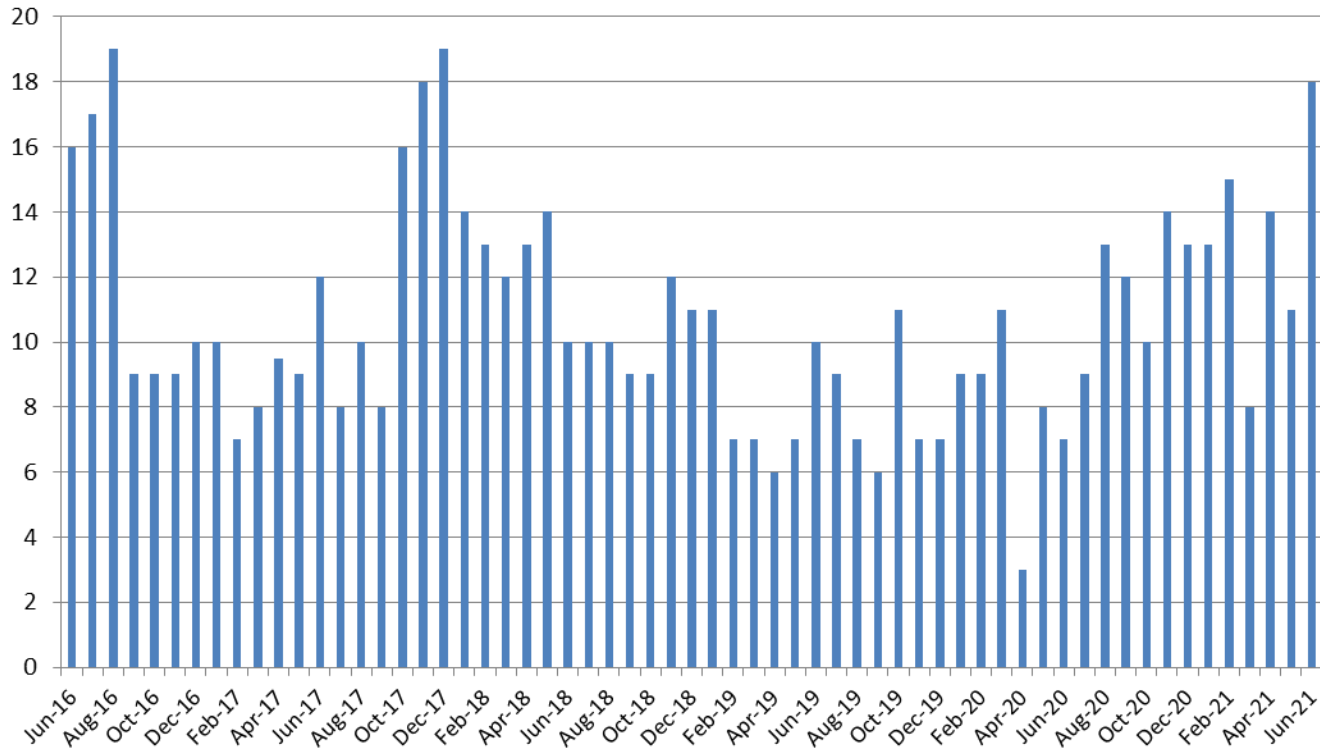


BICE Hold	2015	2016	2017	2018	2019	2020	2021
July	4	4	18	15	32	24	19

Felony Commitments	2015	2016	2017	2018	2019	2020	2021
July	120	131	103	97	59	70	66



Journal Entry Completion (Average Days) June 2016 - present



June	2016	2017	2018	2019	2020	2021
Avg. Days	16	12	10	10	7	18
YTD Avg.	12	9	12.7	8	8	13

