

Criminal Justice Coordinating Council

Population Report & Program Trends

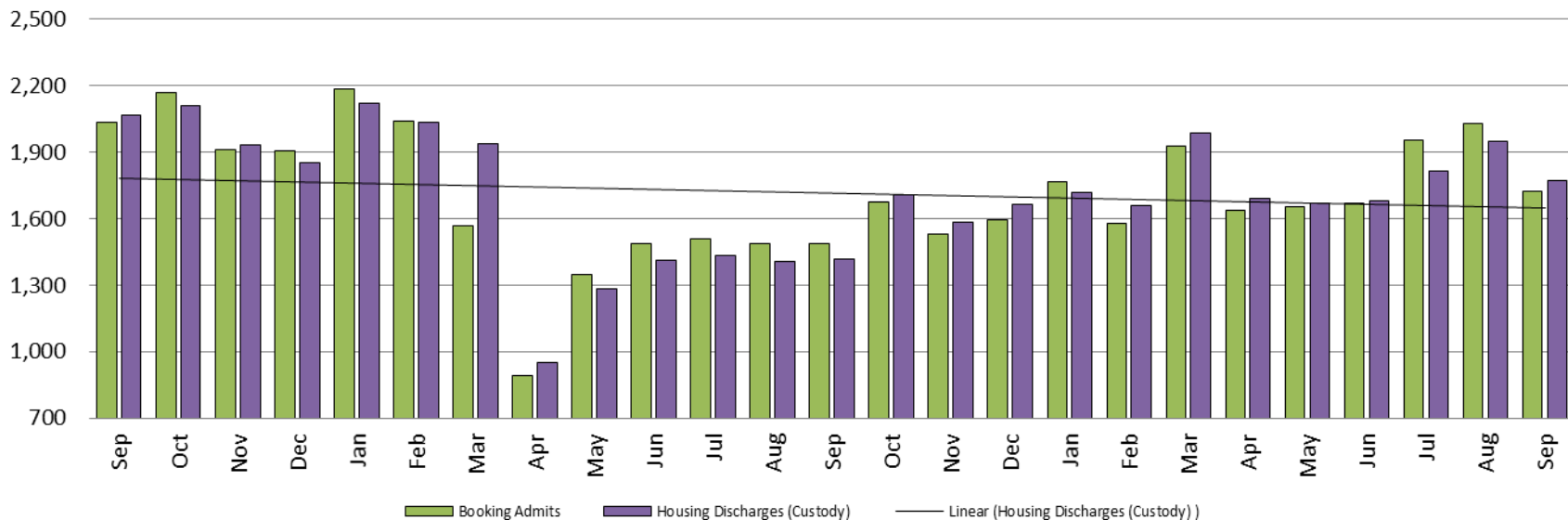
September 2021



Sedgwick County...
working for you

Detention Facility

Booking Admits & Housing Discharges from Custody September 2019 - present



Bookings Year over Year: Month of September



Bookings September

2019: 2,037

2020: 1,485

2021: 1,721

Housing Discharges September

2019: 2,067

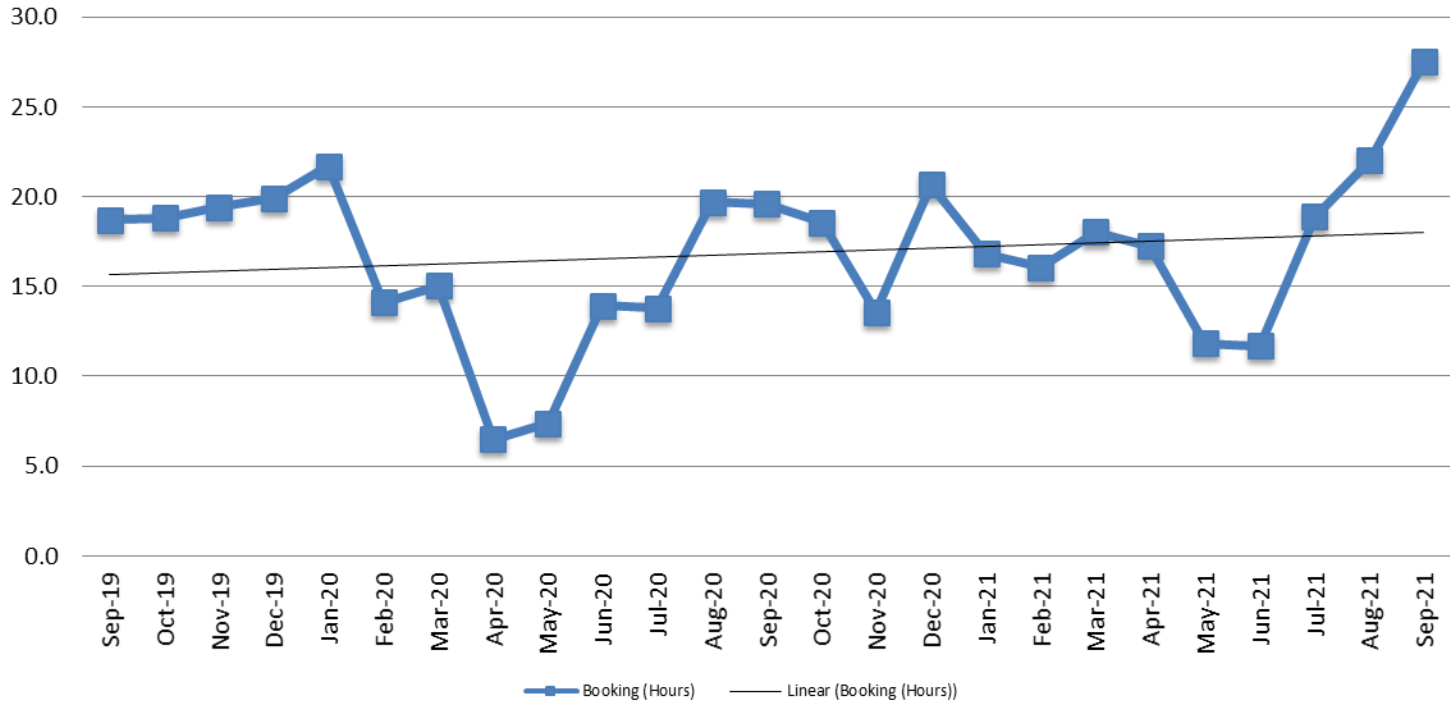
2020: 1,417

2021: 1,770



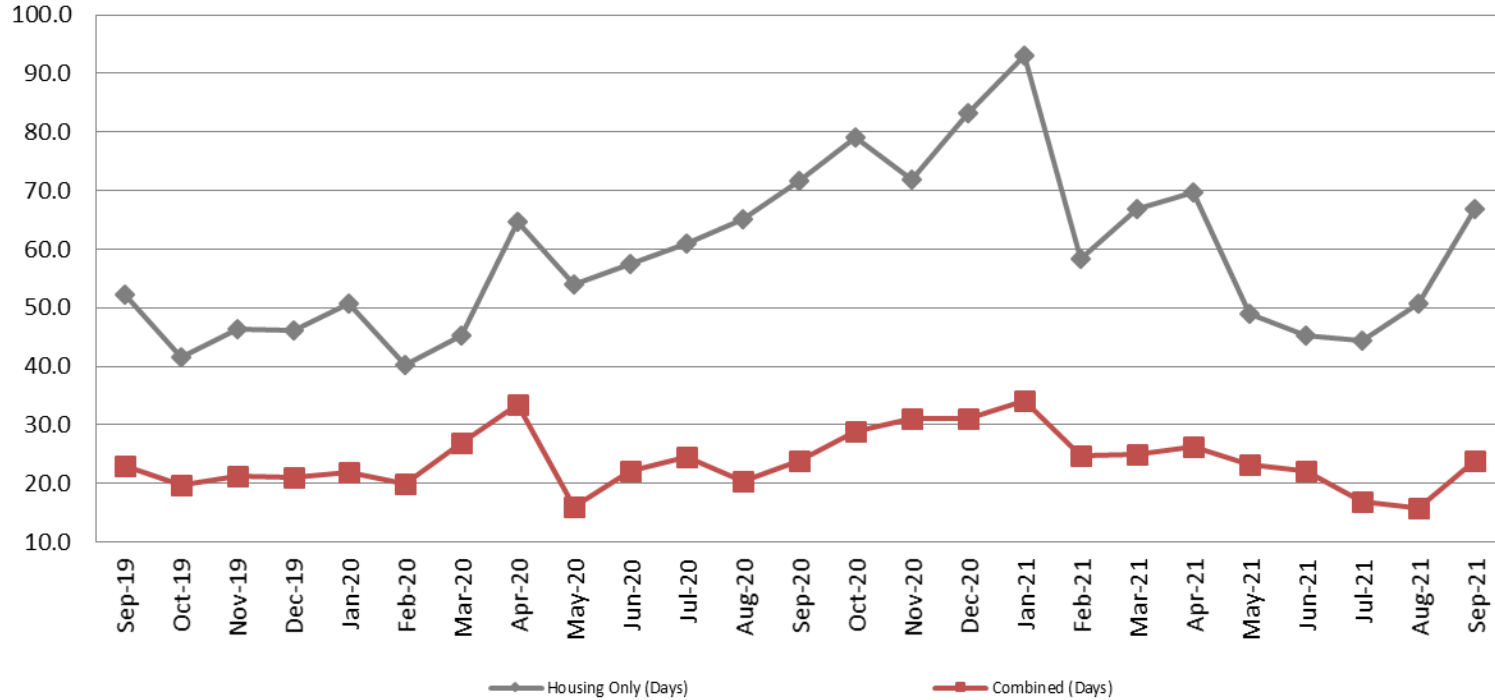
Sedgwick County...
working for you

Average Length of Stay: Booking (Hours) September 2019 - present



September	September YTD Average
2019: 18.7	2019: 14.2
2020: 19.6	2020: 14.6
2021: 27.5	2021: 17.8

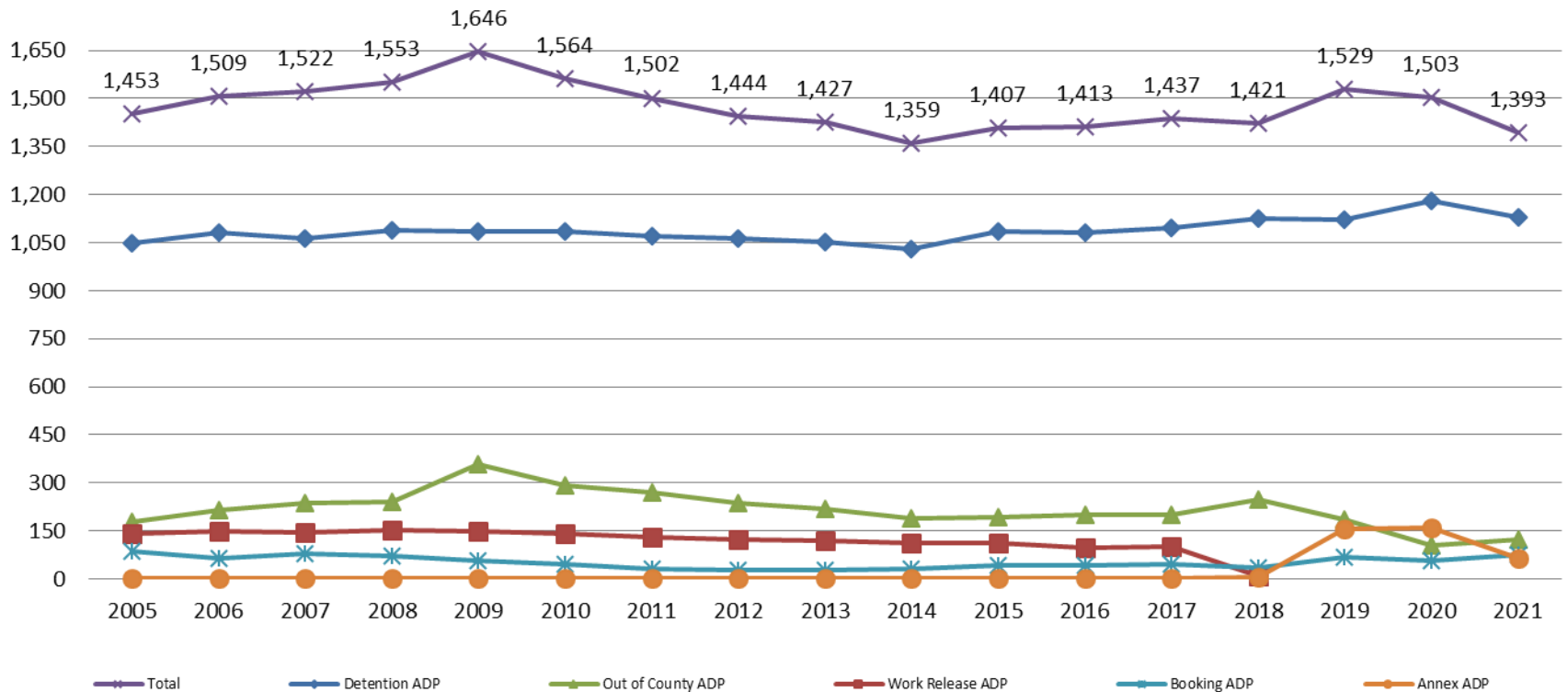
Average Length of Stay: Housing & Combined (Days) September 2019 - present



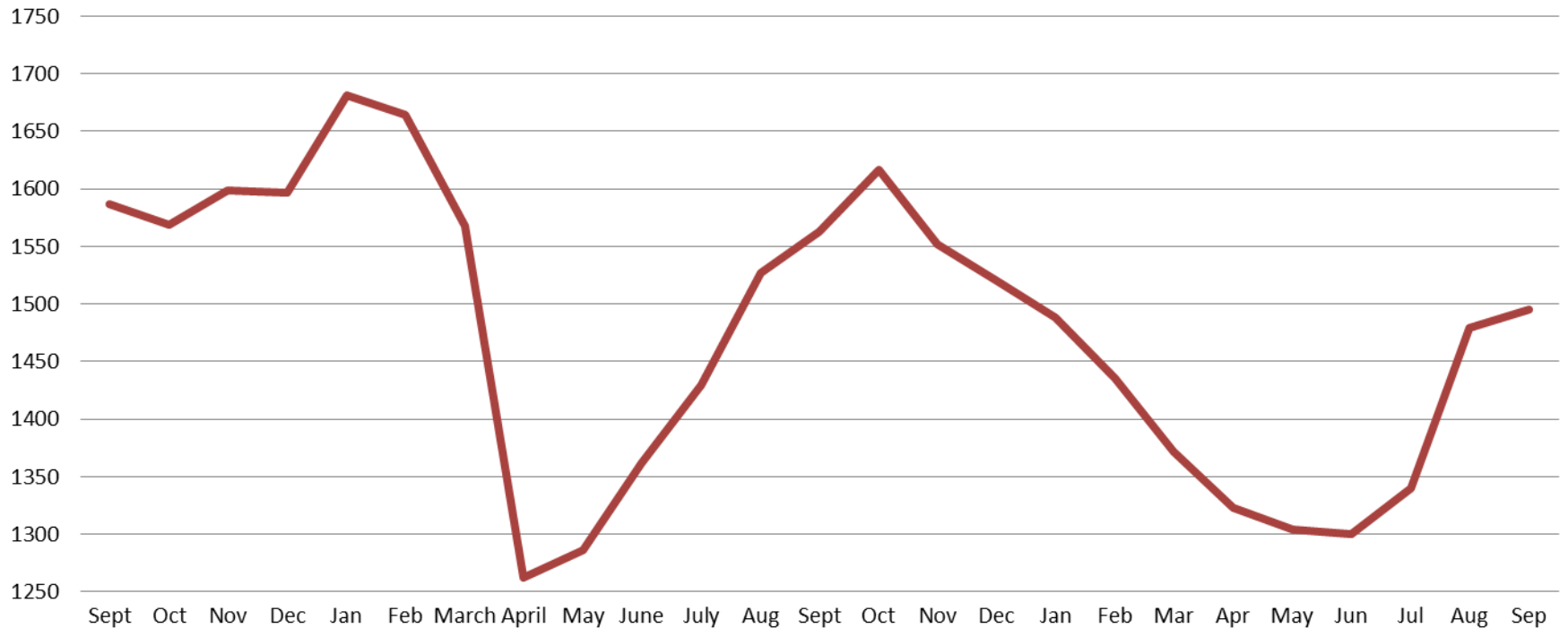
Month Year	Housing Only	Housing YTD AVG	Combined Days	Combined YTD AVG
September 2019	52.2	41.1	23.0	20.7
September 2020	71.6	56.7	23.9	23.2
September 2021	66.9	60.5	23.9	23.5

Jail: Annual Average Daily Population (ADP)

TRENDS: Booking, Detention, Work Release, & Out of County Annual ADP: 2005 - present

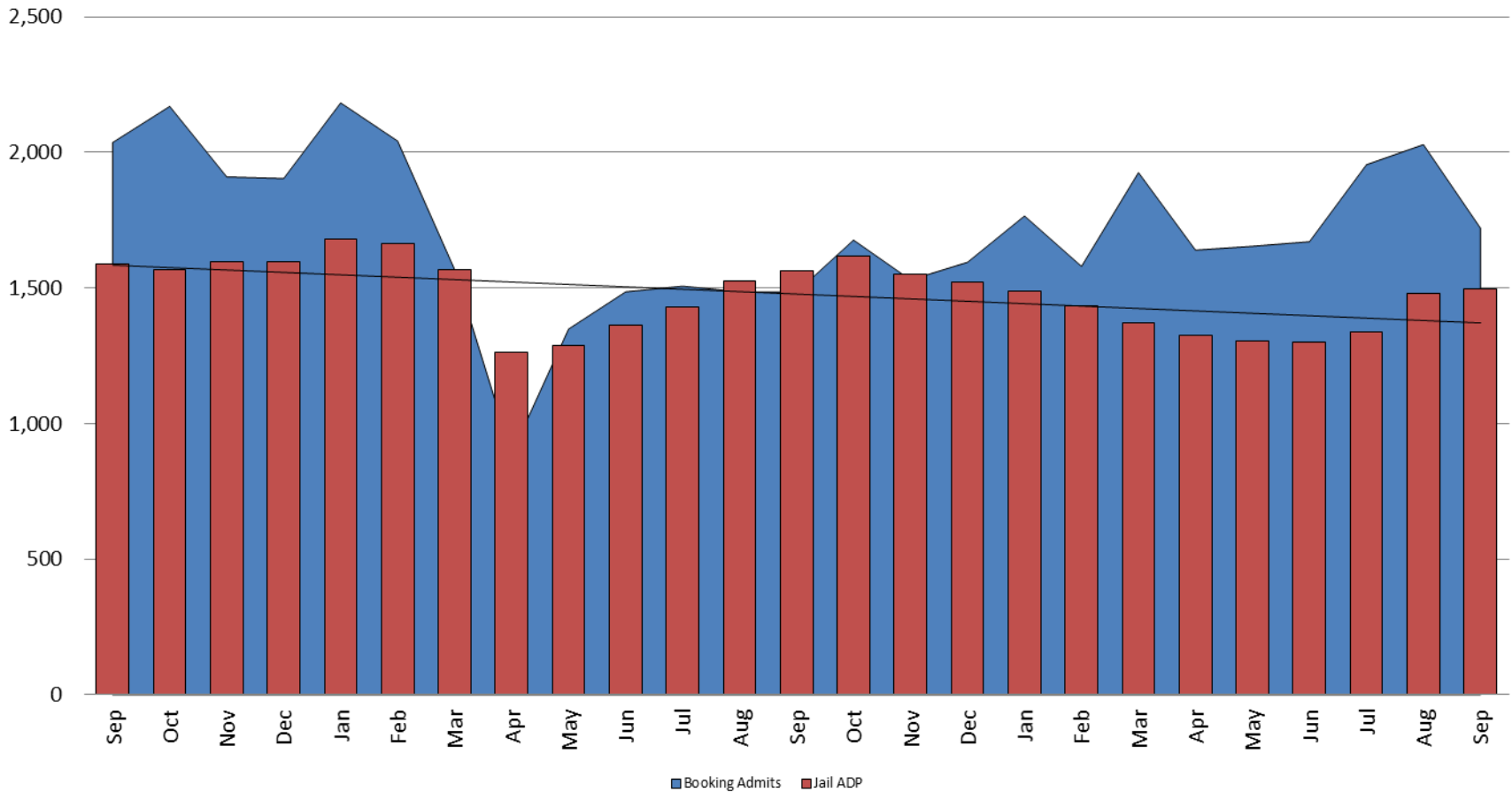


TOTAL MONTHLY ADP: JAIL (Booking, Detention Facility, Annex, & Out of County) September 2019 - present



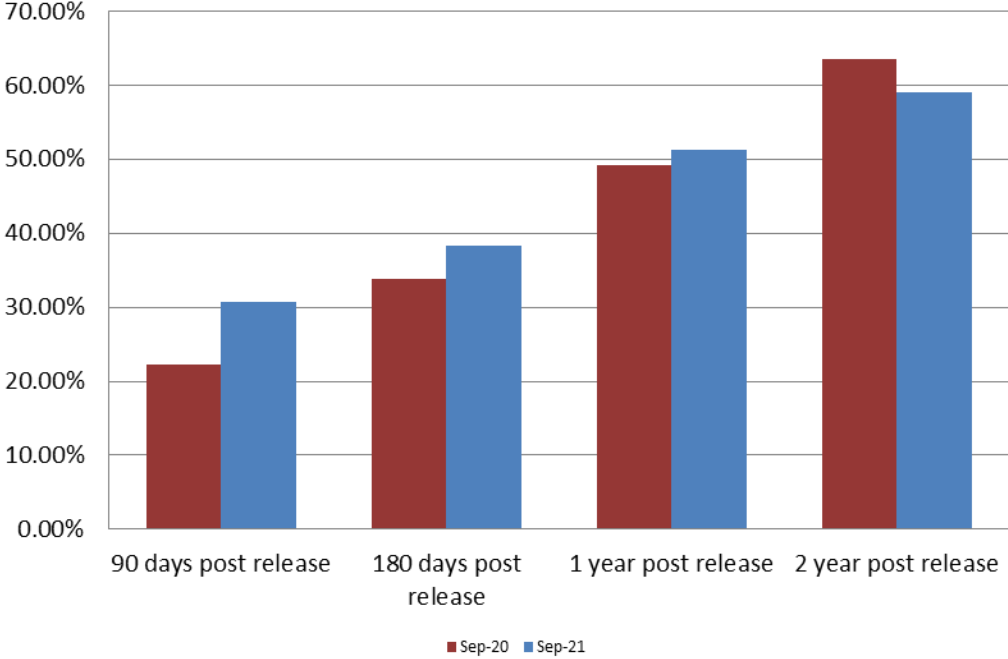
September 2019	September 2020	September 2021
1,587	1,563	1,495

Booking Admits & Total Monthly ADP (Jail): September 2019 - present



Jail includes individuals in booking, detention, work release and out-of county (combined)
(data obtained from detention facility)

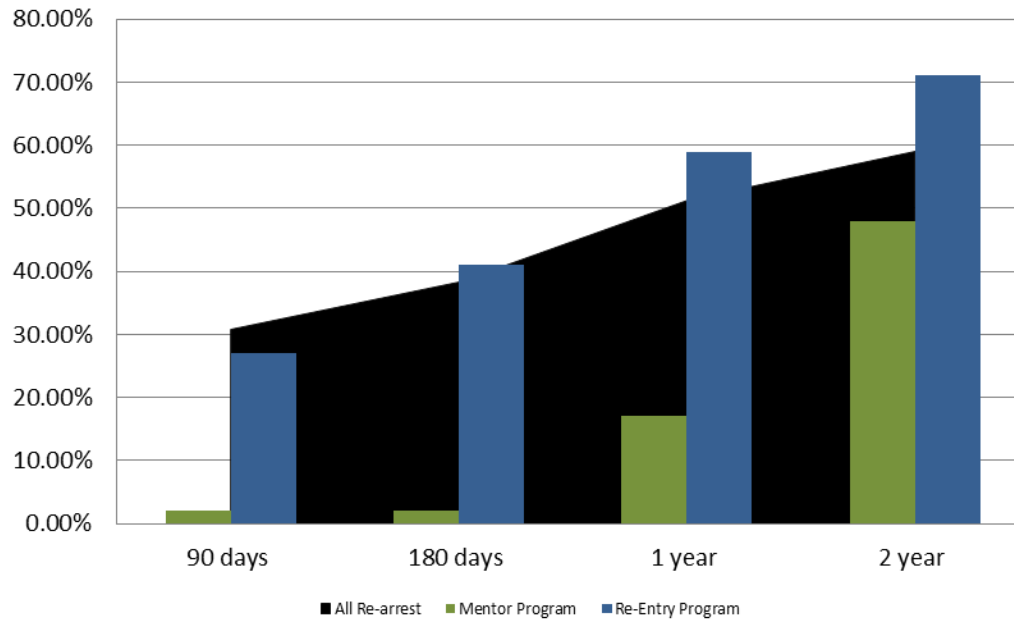
Percent of Released Inmates Rearrested September



Month Year	90 Days	180 Days	1 Year	2 Years
September 2020	22.19%	33.89%	49.22%	63.58%
September 2021	30.80%	38.30%	51.25%	59.04%

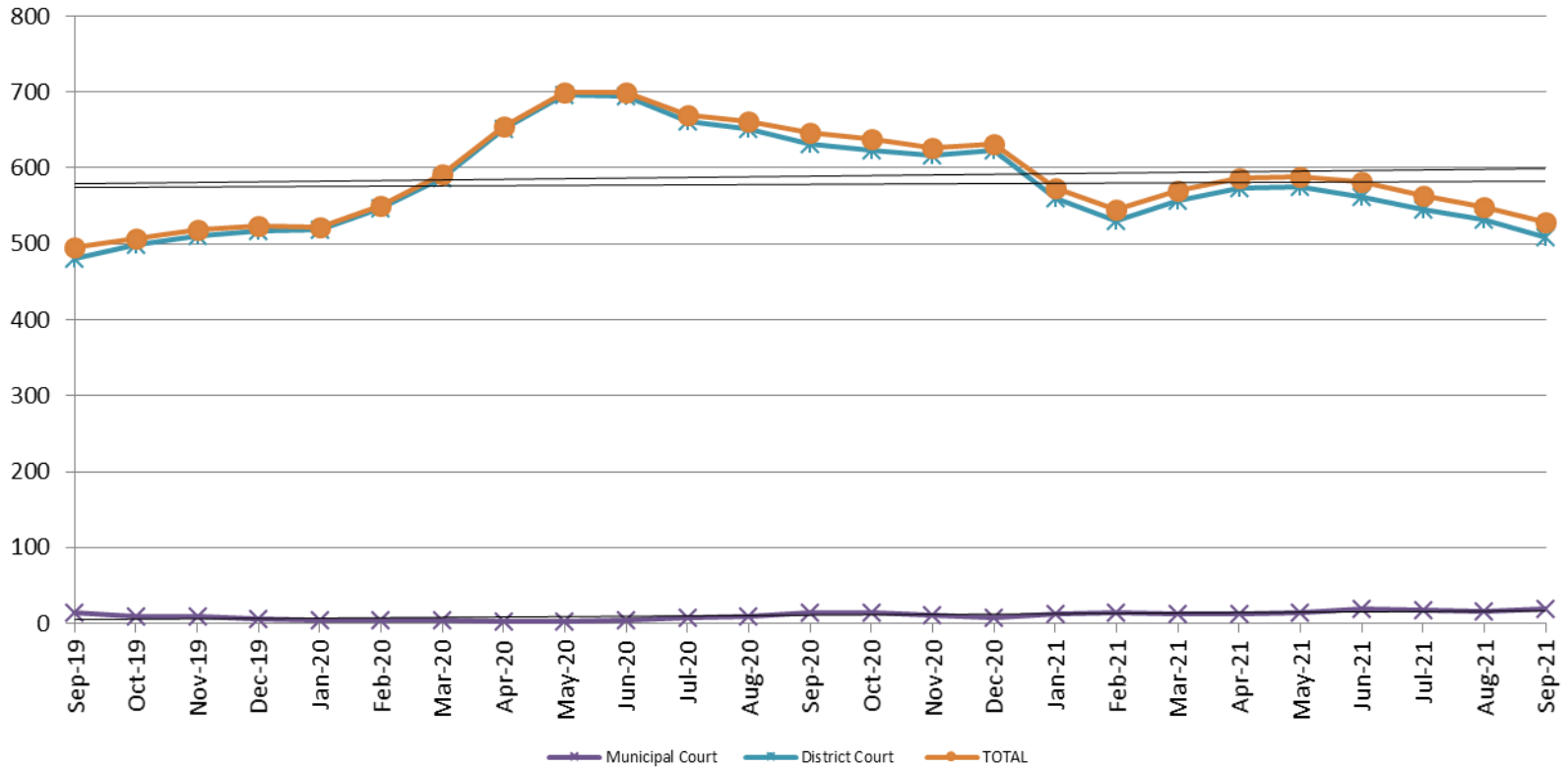


Recidivism by Programs September 2021



September 2021	90 Days	180 Days	1 year	2 years
All Re-arrests	30.80%	38.29%	51.25%	59.04%
Mentor Program	2%	2%	17%	48%
Re-Entry Program	27%	41%	59%	71%

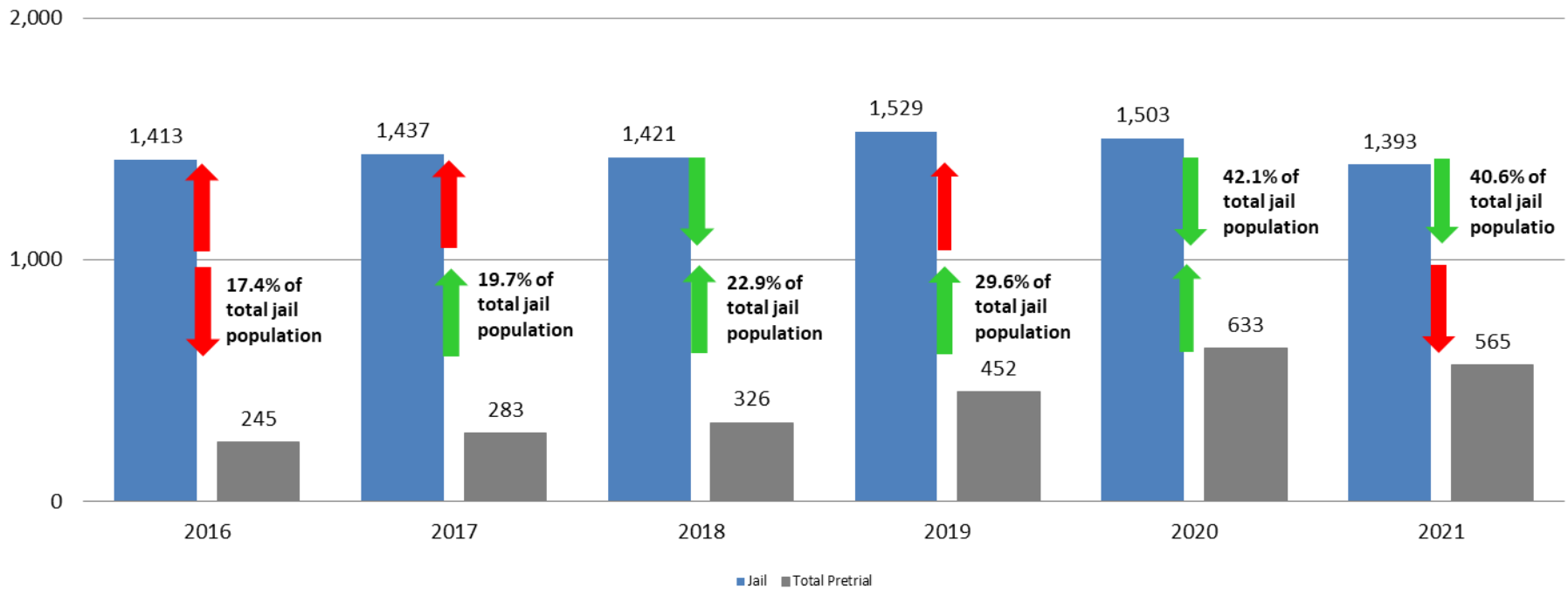
Pretrial Services Program (PSP) Monthly ADP: September 2019 - present



September	2019 ADP	2020 ADP	2021 ADP	2019 YTD Avg.	2020 YTD Avg.	2021 YTD Avg.
Muni. Court	14	15	19	13	6	15.3
Dist. Court	481	631	509	417	627	549.6
Total	495	646	528	431	633	565.0

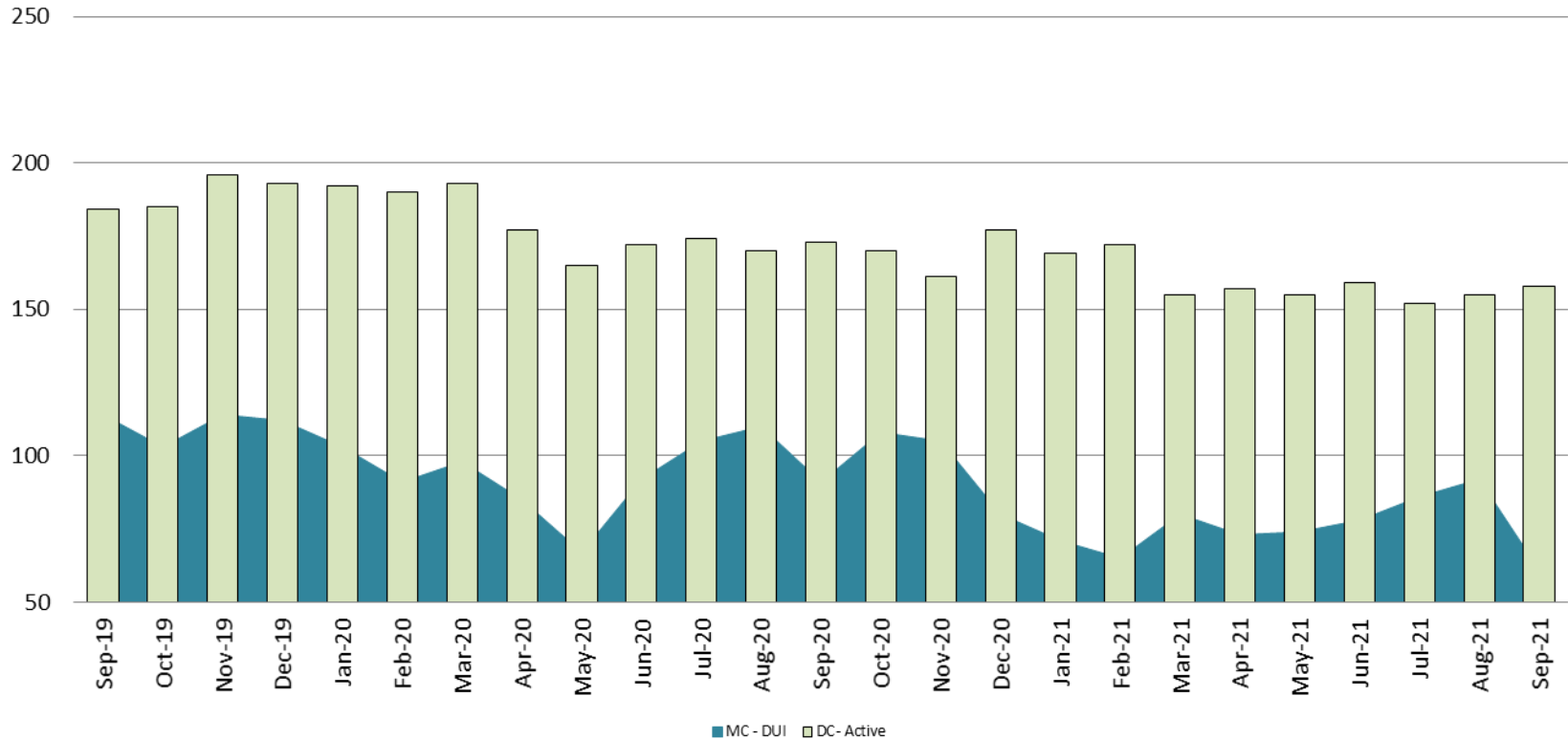
Correlation: Total & PSP

Total Annual ADP: 2016 - present



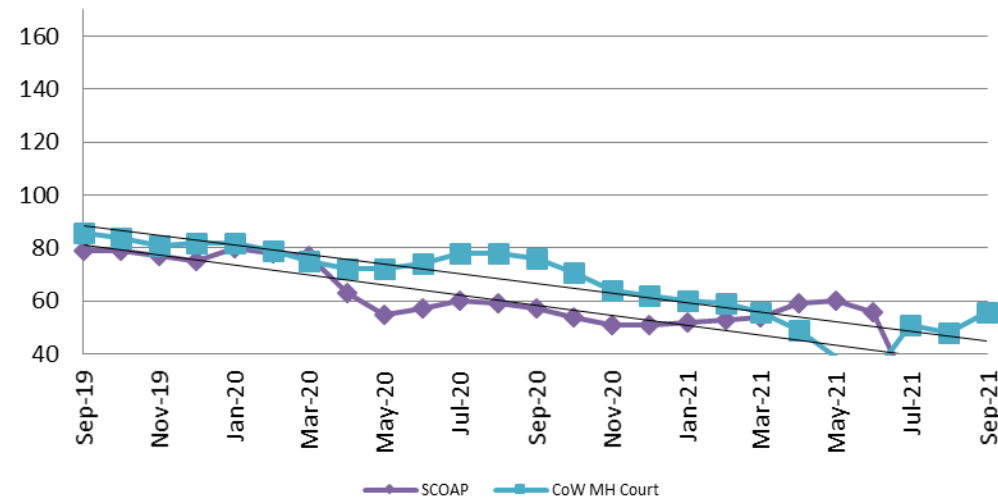
Diversion - Active Caseload

September 2019 - present

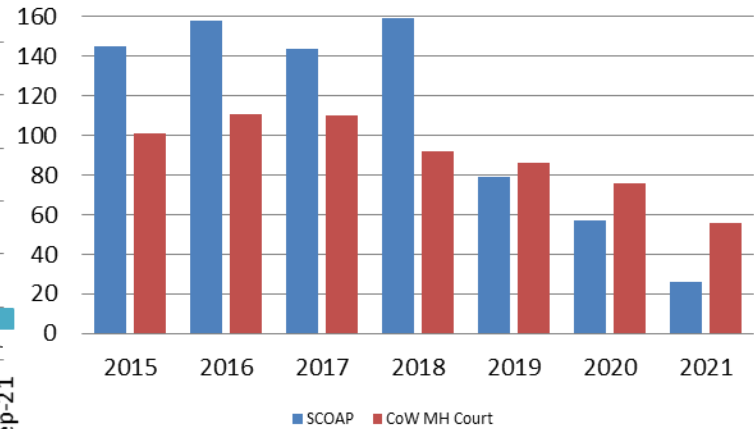


September	2019	2020	2021	2019 YTD Avg.	2020 YTD Avg.	2021 YTD Avg.
Muni. Court- DUI	114	91	61	103	94	76
Dist. Court- Active	184	173	158	190	178	159

Mental Health - ADP September 2019 - present

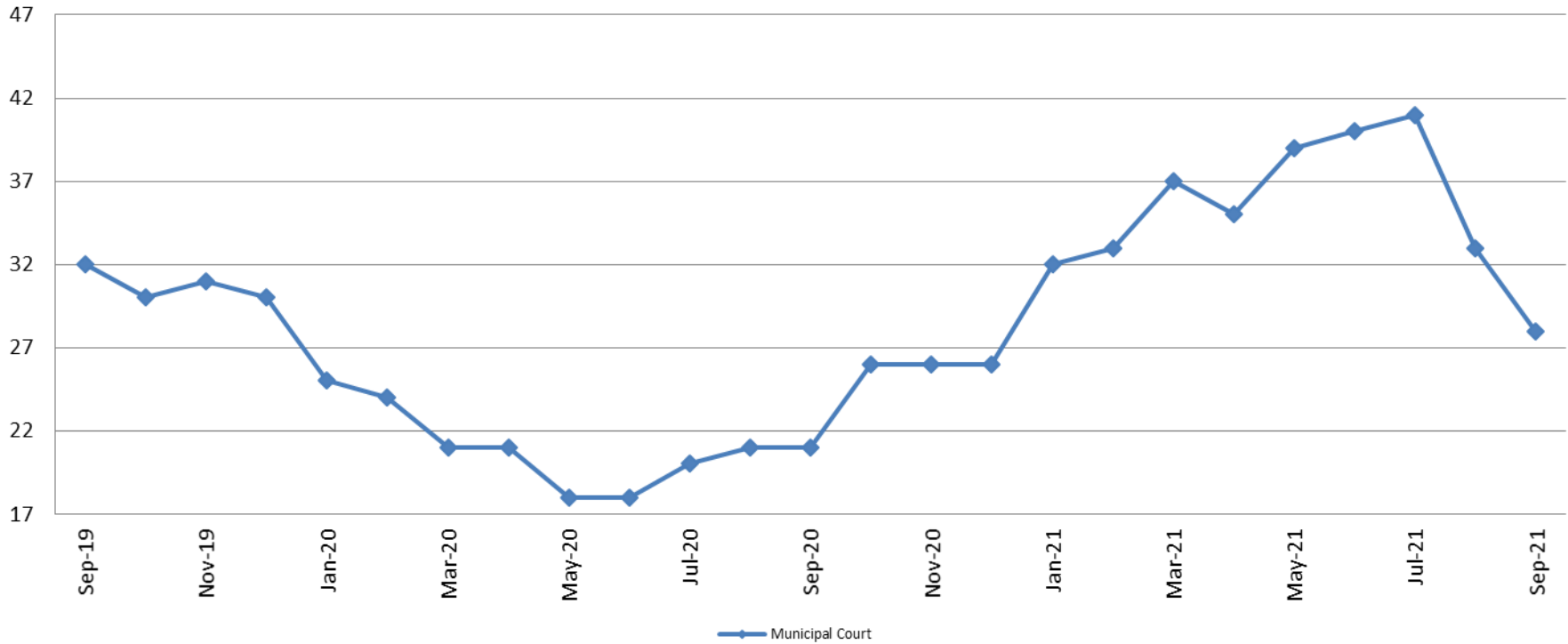


Mental Health ADP Year over Year - September



September	2019 ADP	2020 ADP	2021 ADP	2019 YTD Avg.	2020 YTD Avg.	2021 YTD Avg.
SCOAP	79	57	26	105	65	46
MH Court	86	76	56	98	76	50

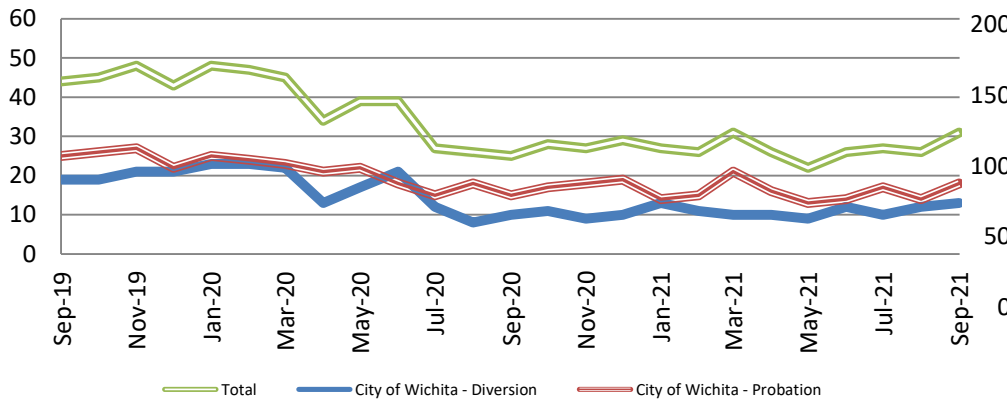
Day Reporting - Active Caseload September 2019 - present



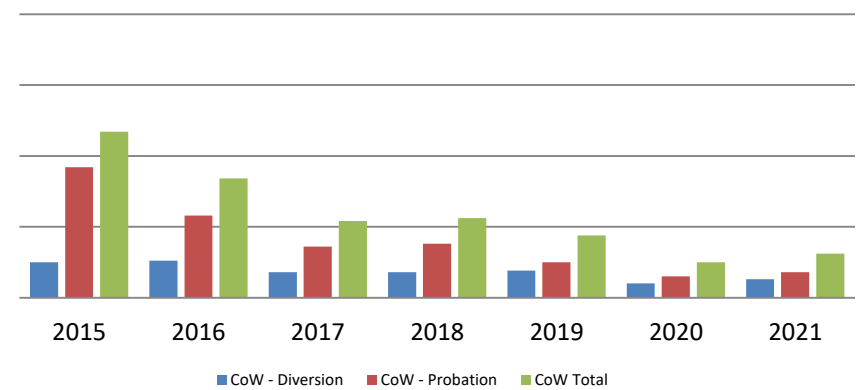
September	2016	2017	2018	2019	2020	2021
Muni. Court	31	39	31	32	21	28
Muni. Court YTD Avg.	42	36	35	30	21	35



Drug Court - City of Wichita ADP: September 2019 - present



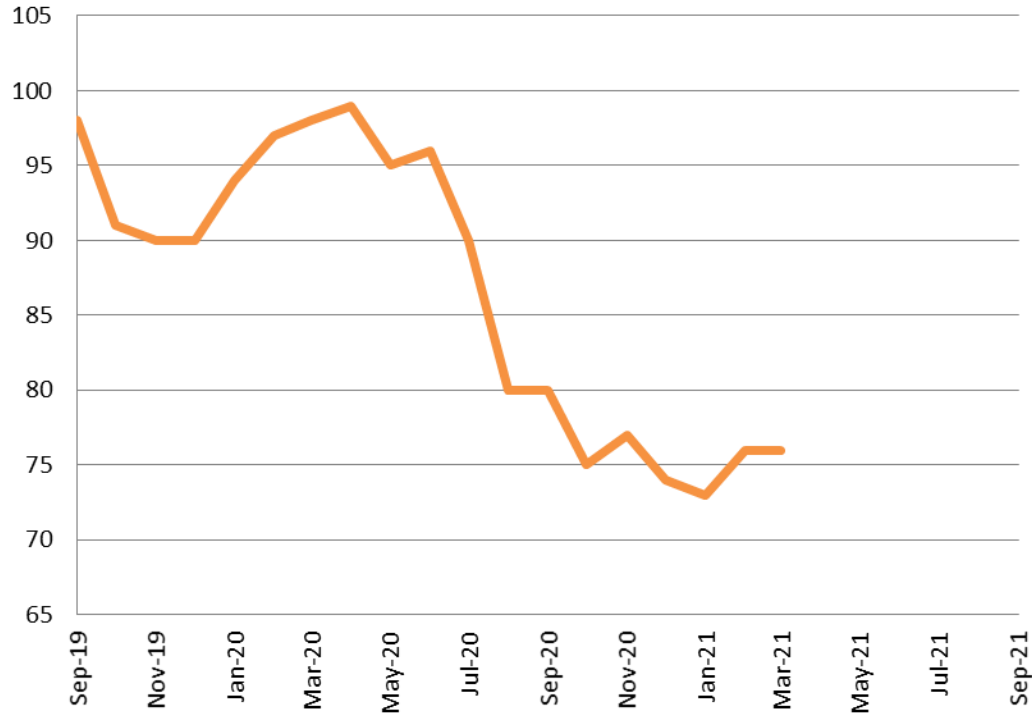
Drug Court- City of Wichita Year over Year - September



September	2019	2020	2021
Diversion	19	10	13
Probation	25	15	18
Total	44	25	31



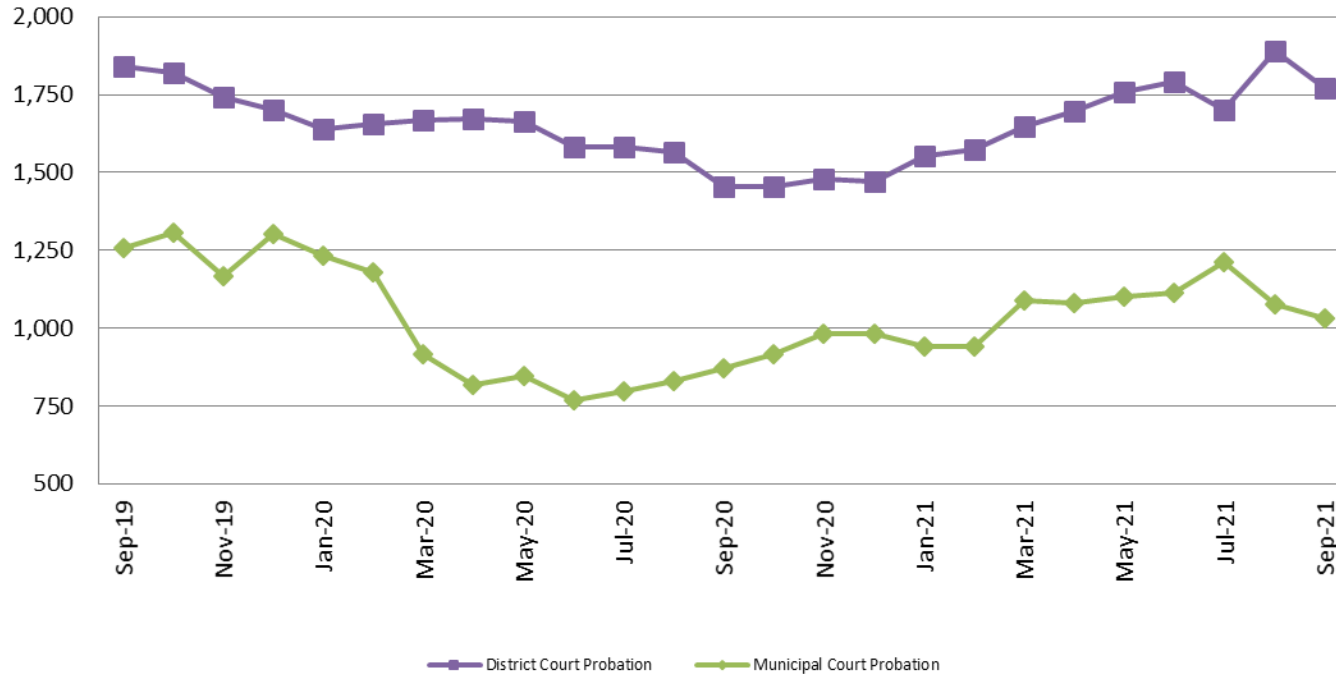
Drug Court - Sedgwick County ADP: September 2019 - present



September	2019	2020	2021
Sedg. Co. ADP	98	80	N/A
YTD Avg.	99	92	N/A



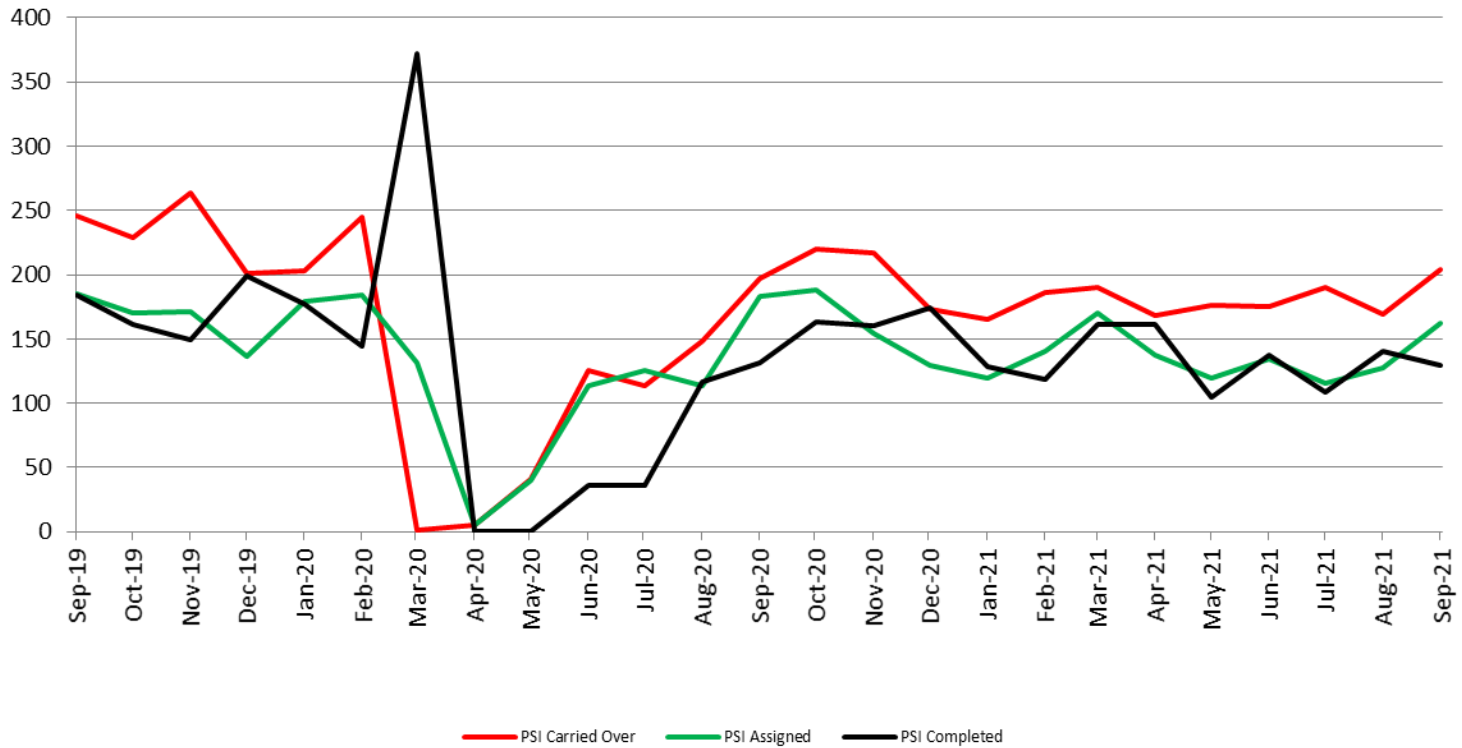
Probation - Active Caseloads September 2019 - present



September	2019	2020	2021	2019 YTD Avg.	2020 YTD Avg.	2021 YTD Avg.
Dist. Court Probation	1,842	1,455	1,770	1,909	1,609	1,709
Muni. Court Probation	1,258	870	1,032	1,253	918	1,066



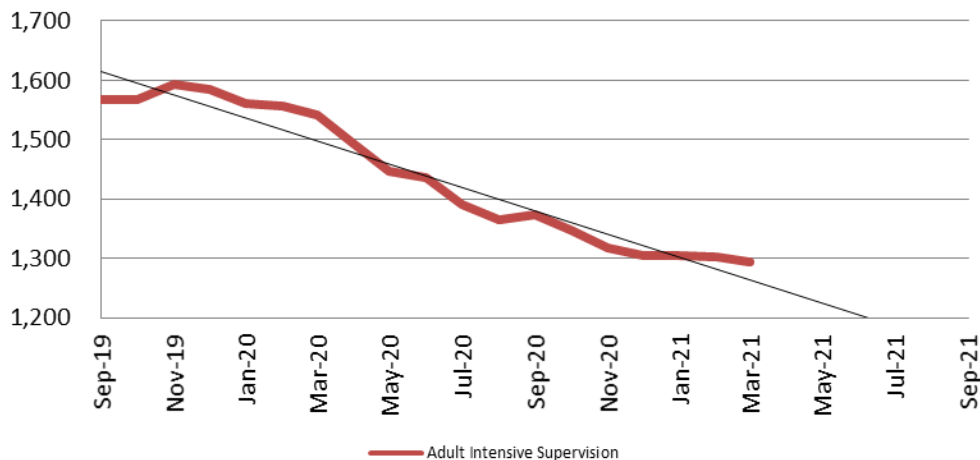
District Court Probation: Pre-Sentence Investigation September 2019 - present



September	2019	2020	2021
Carried Over	246	197	204
Assigned	185	183	162
Completed	184	131	129

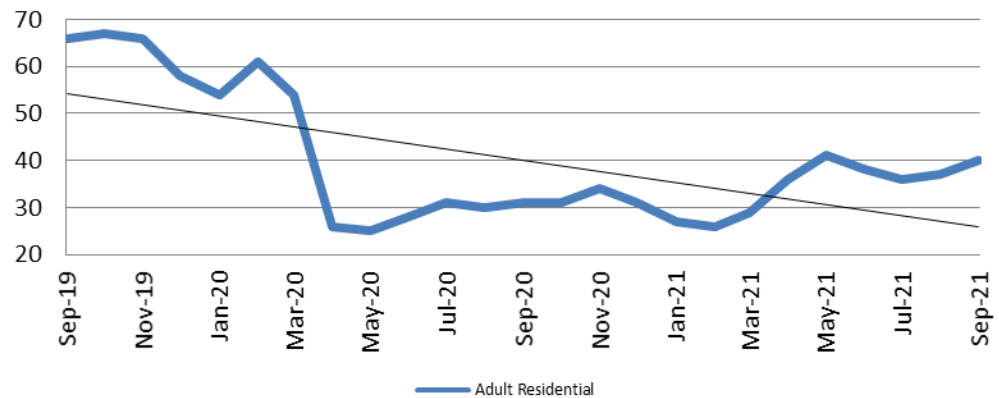
Community Corrections

**Adult Intensive Supervision Probation (AISP):
ADP September 2019 - present**



Year	September	September YTD Avg.
2019	1,568	1,543
2020	1,374	1,463
2021	N/A	N/A

**Adult Residential: ADP
September 2019 - present**



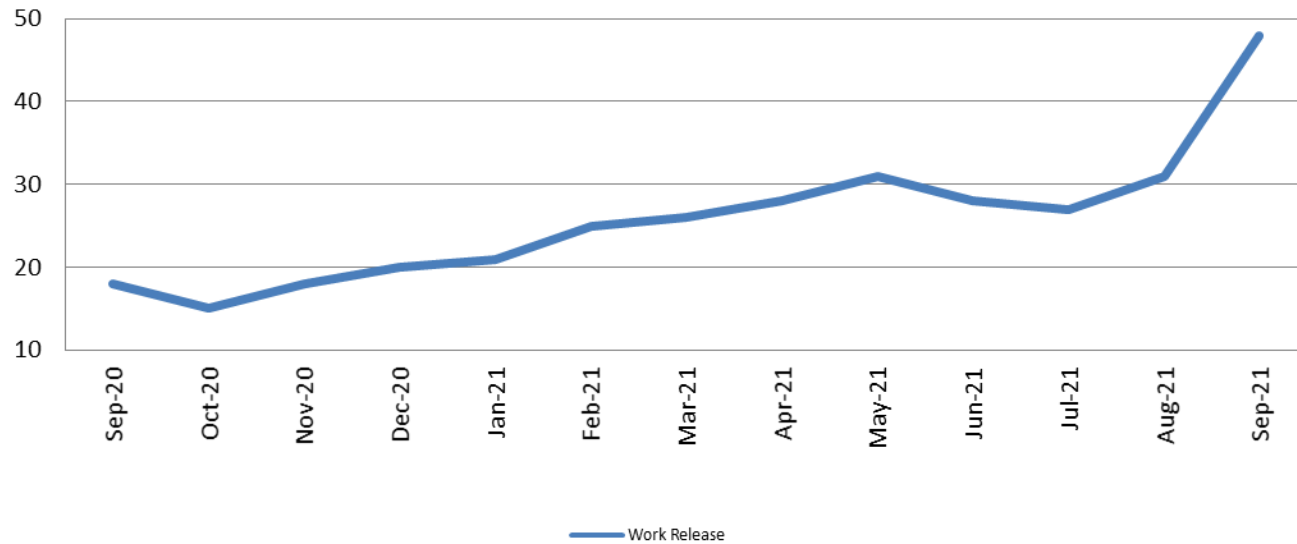
Year	September	September YTD Avg.
2019	66	65
2020	31	38
2021	40	34



Sedgwick County...
working for you

Community Corrections

Work Release: ADP September 2020 - present

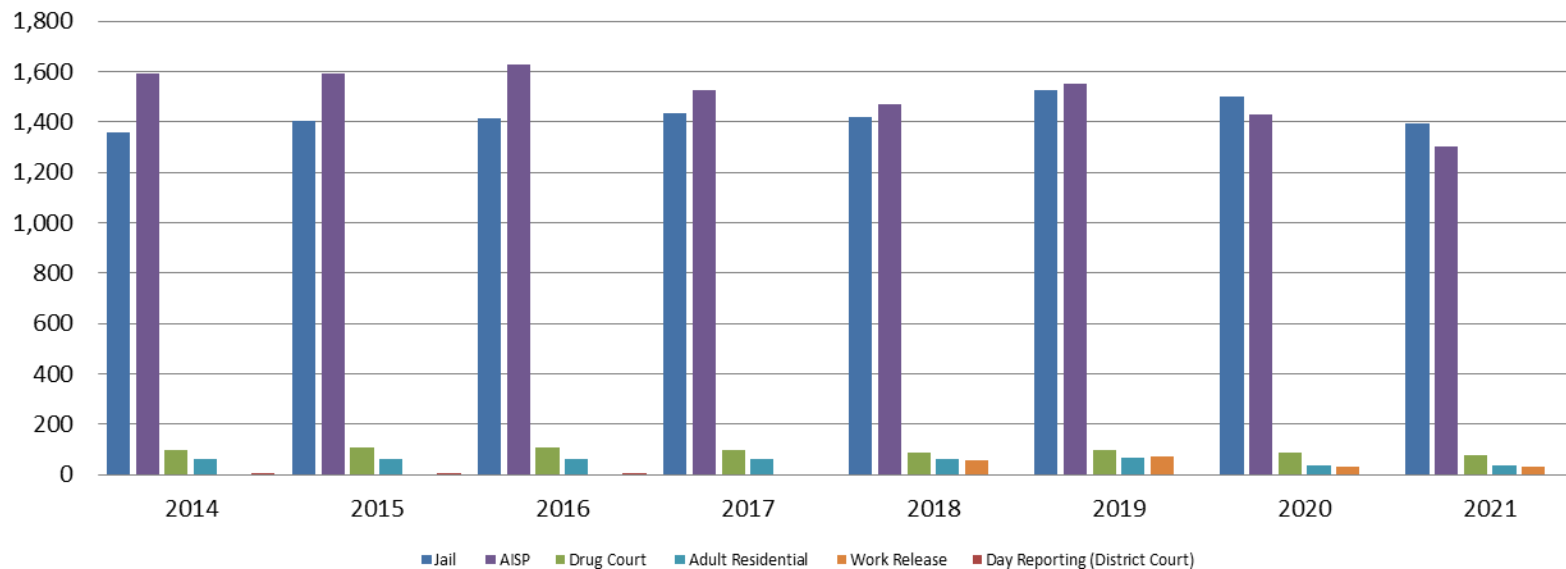


Month Year	Total	YTD Avg.
September 2020	18	35
September 2021	48	29



Correlation: Total & Sedgwick County Programs (Adult)

Total Annual ADP 2014 - present

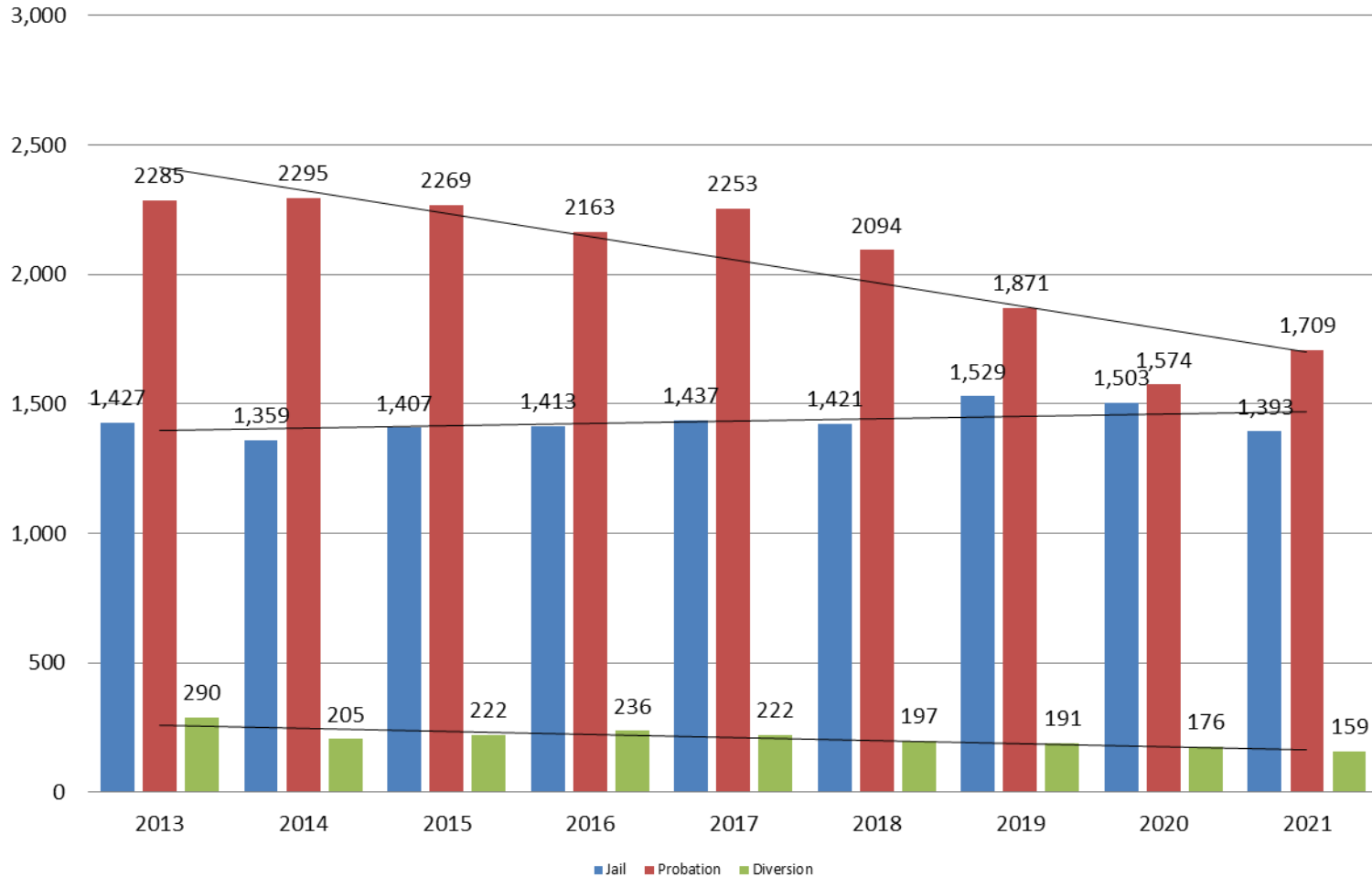


	2019	2020	2021
Jail	1,529	1,503	1,393
AISP	1,553	1,428	1,300
Drug Court	97	88	75
Adult Residential	65	36	34
Work Release	71	30	29
Day Reporting (DC)	0	0	0



Correlation: Total & District Court Programs

Total Annual ADP: 2013 - present



■ Jail ■ Probation ■ Diversion

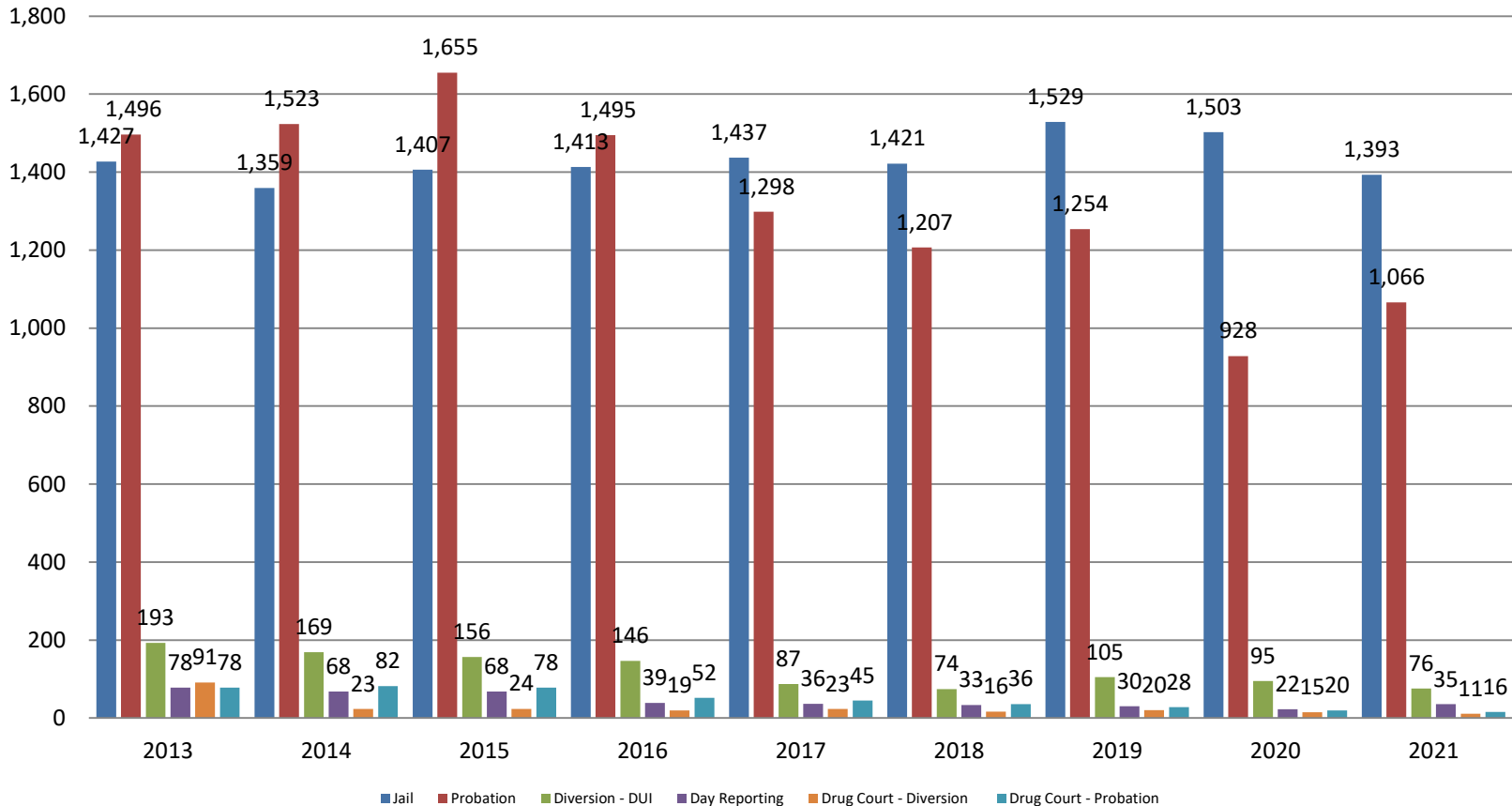


Sedgwick County...
working for you

Jail includes individuals in booking, detention, work release and out-of county (combined)
(data obtained from detention facility, DA's Office, & District Court)

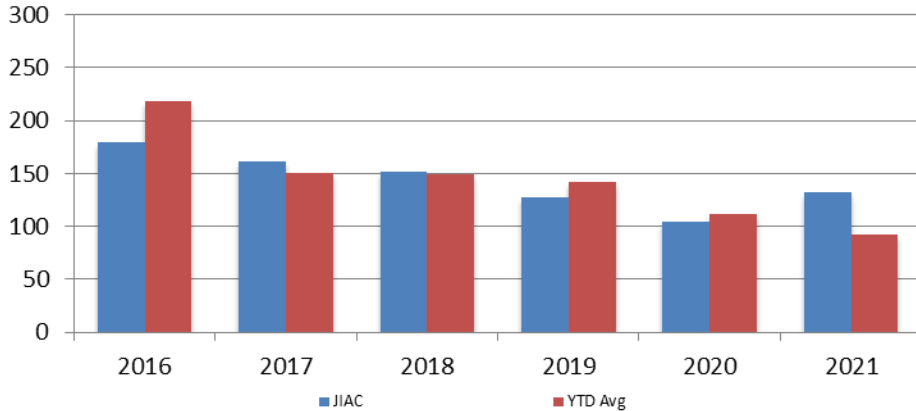
Correlation: Total & City of Wichita / Municipal Court Programs

Total Annual ADP: 2013 - present



Juvenile

**JIAC Intakes
September 2016 - present**

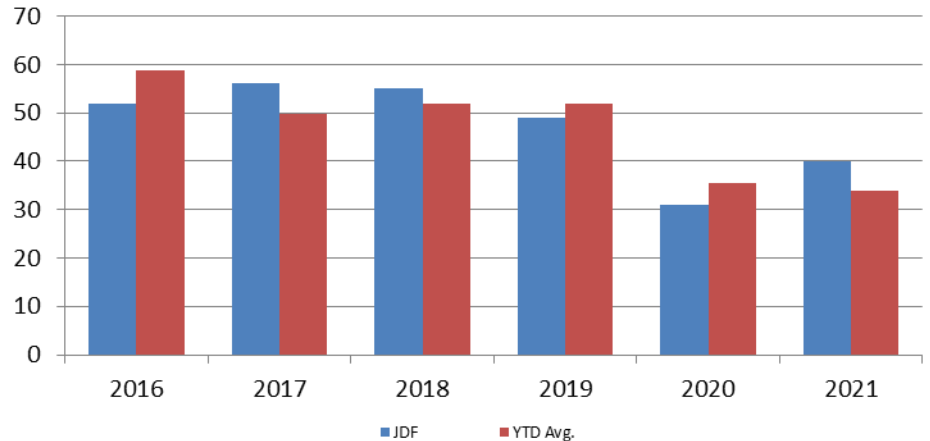


Year	September	September YTD Avg.
2016	179	218
2017	161	151
2018	152	149
2019	127	143
2020	105	111
2021	132	92

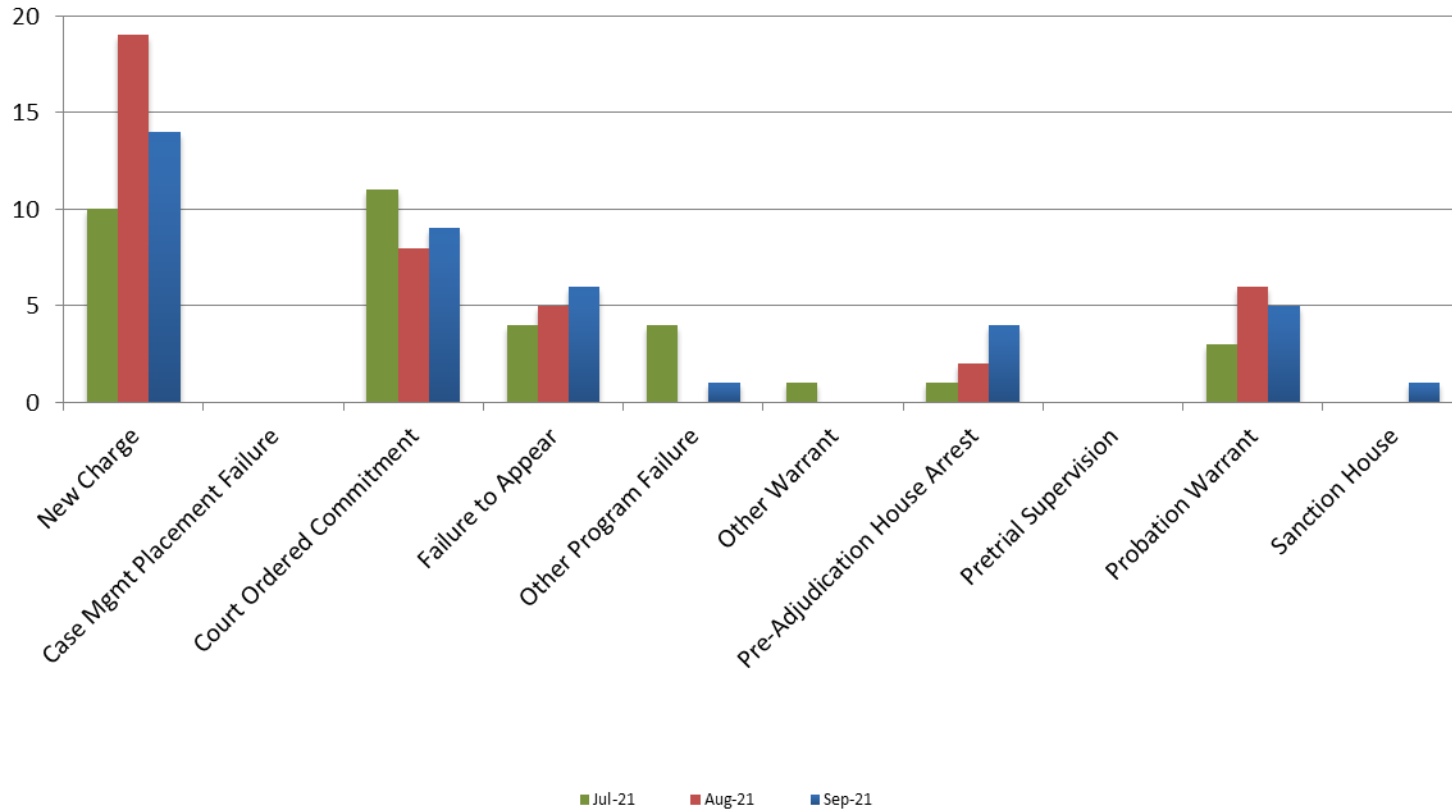
Year	September	September YTD Avg.
2016	52	59
2017	56	50
2018	55	52
2019	49	52
2020	31	36
2021	40	34

JDF ADP

September 2016 - present



Reason for JDF Admits



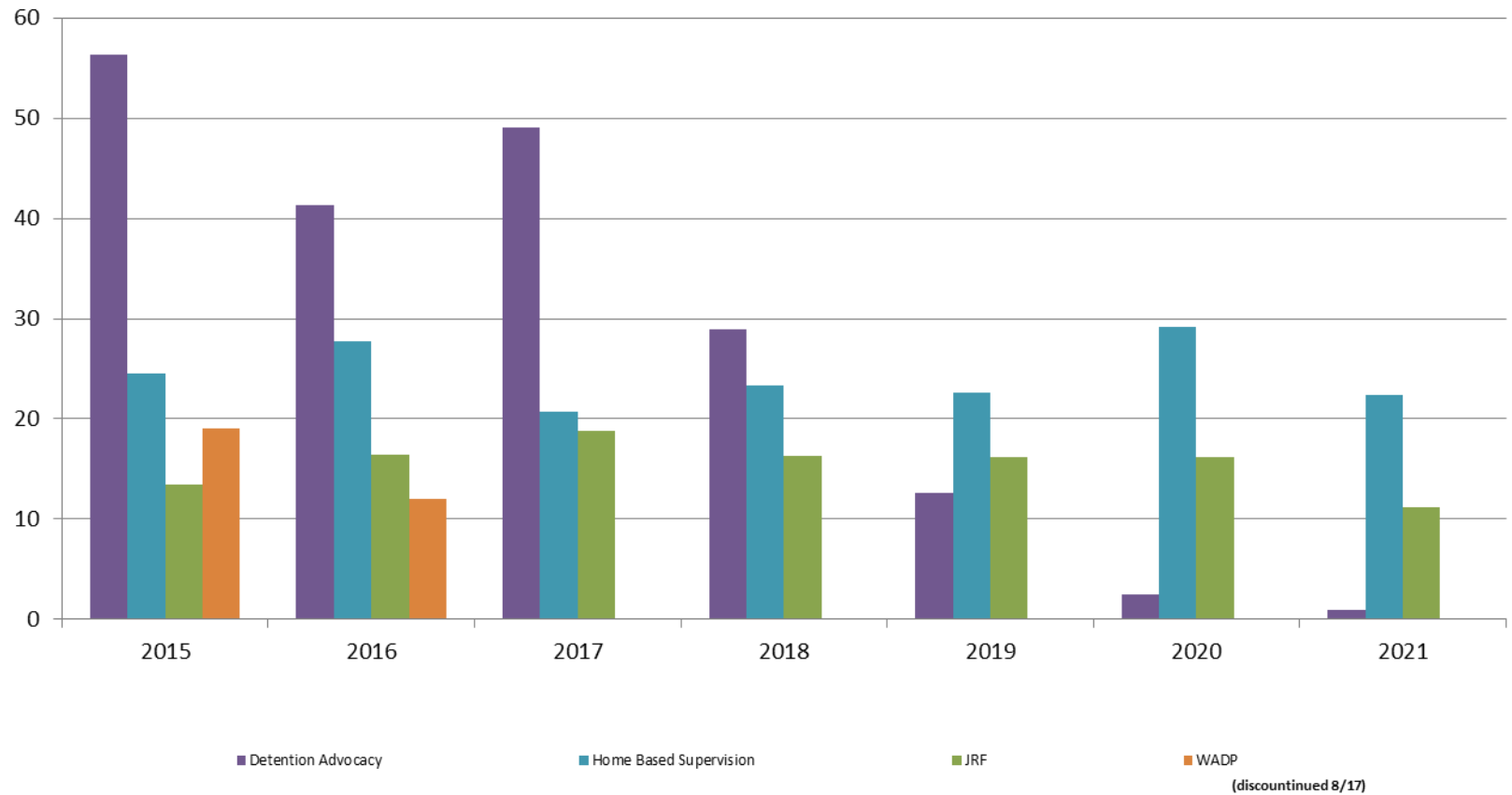
Reason for JDF Admits

Reason	September 2020	September 2021
New Charges	5	14
Case Management Placement Failures	0	0
Court Ordered Commitment	7	9
Failure to Appear	1	6
Other Program Failure	6	1
Other Warrant	3	0
Pre-Adjudication House Arrest	1	4
Pretrial Supervision	0	0
Probation Warrant	8	5
Sanction House	0	1



Juvenile Detention Alternatives

ADP: September 2015 - present



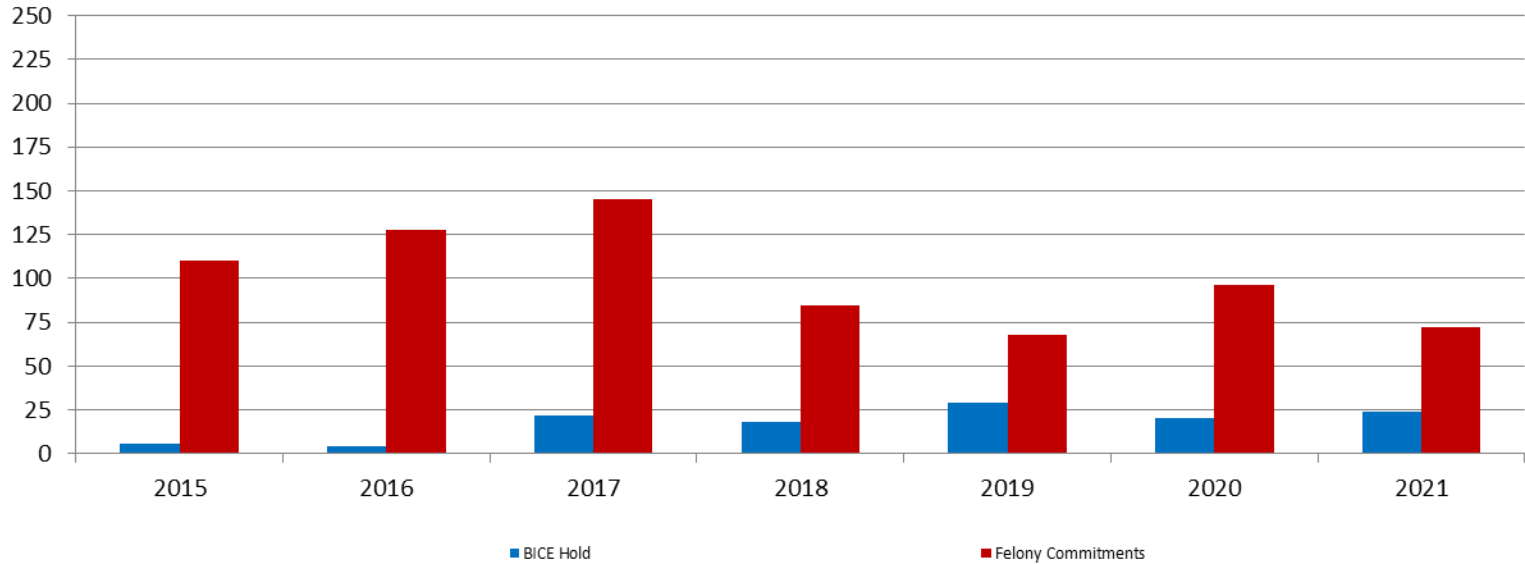
Juvenile Detention Services

September ADP	2018	2019	2020	2021
Juvenile Detention Facility	55	49	31	40
Juvenile Residential Facility	16	16	16	11
Home Based Supervision	23	23	29	22
Detention Advocacy Case Management Services	29	13	2	1
Weekend Alternative Detention Program (total)	0	N/A	N/A	N/A

September YTD AVERAGE	2018	2019	2020	2021
Juvenile Detention Facility	52	52	36	34
Juvenile Residential Facility	13	15	17	11
Home Based Supervision	25	28	30	23
Detention Advocacy Case Management Services	32	21	10	3
Weekend Alternative Detention Program	0	N/A	N/A	N/A

Monthly Jail Snapshot: September 2021

Snapshots September 2015 - present

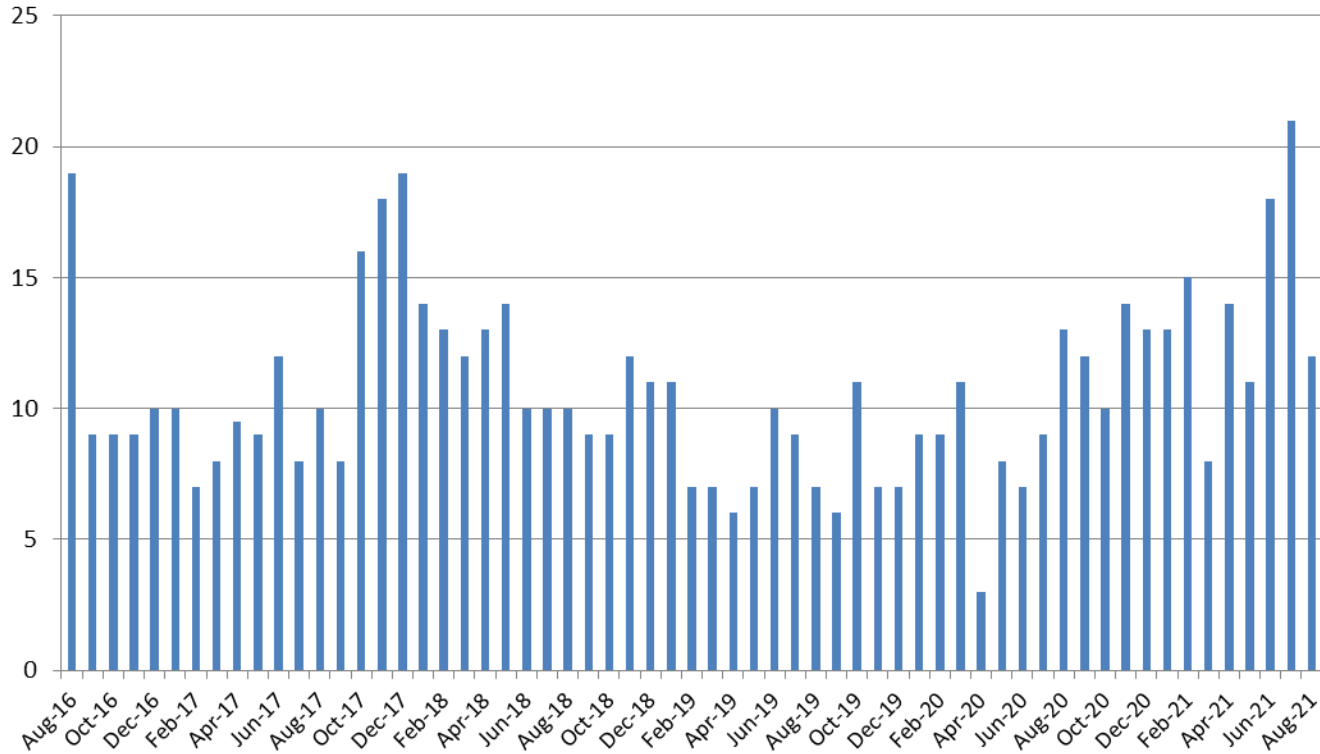


BICE Hold	2015	2016	2017	2018	2019	2020	2021
September	6	4	22	18	29	20	24

Felony Commitments	2015	2016	2017	2018	2019	2020	2021
September	110	128	145	85	68	96	72



Journal Entry Completion (Average Days) August 2016 - present



August	2016	2017	2018	2019	2020	2021
Avg. Days	19	10	10	7	13	12
YTD Avg.	14	9	12	8	9	14

