

Criminal Justice Coordinating Council

Population Report & Program Trends

December 2021

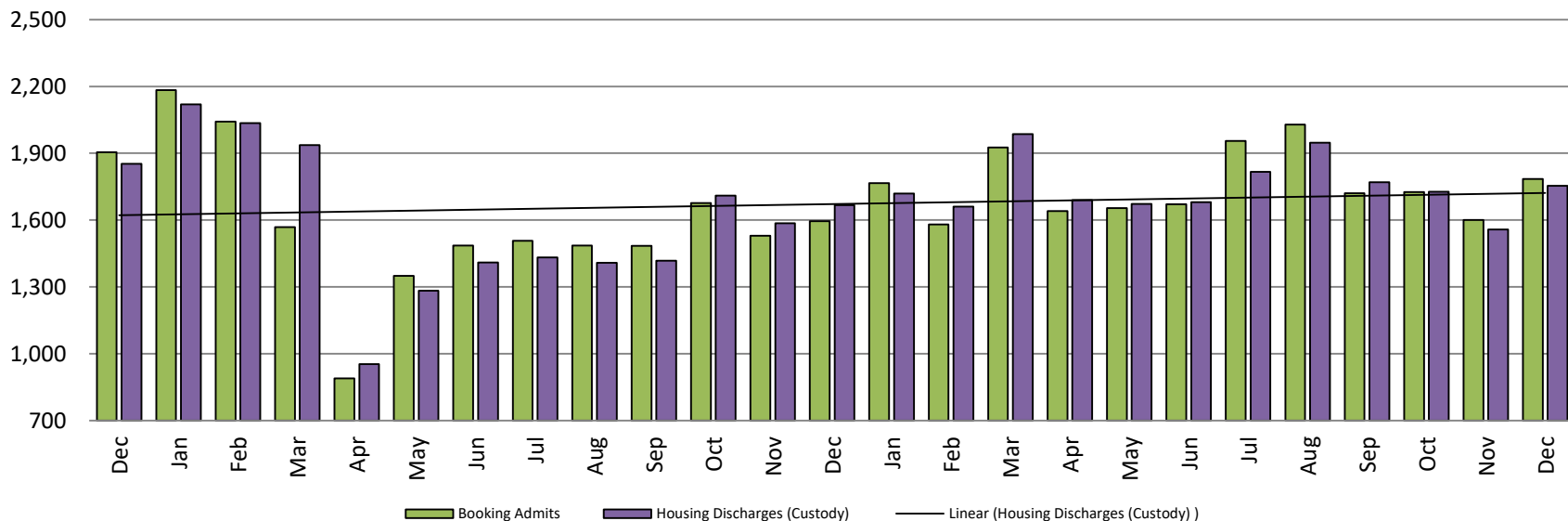


Sedgwick County...
working for you

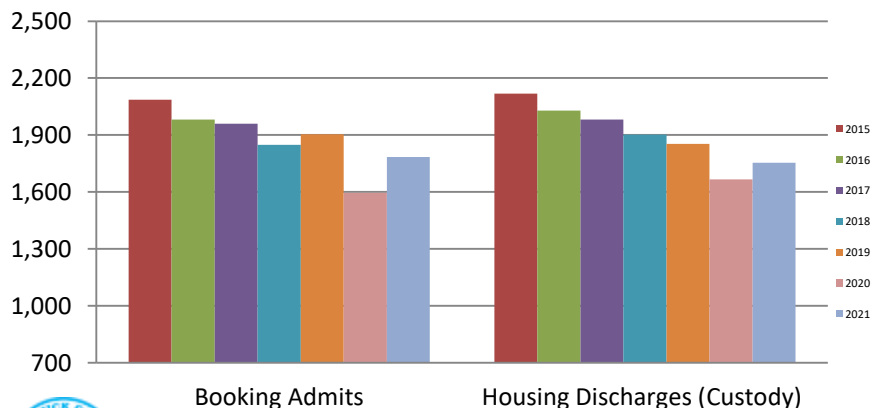
Detention Facility

Booking Admits & Housing Discharges from Custody

December 2019 - present



Bookings Year over Year: Month of December

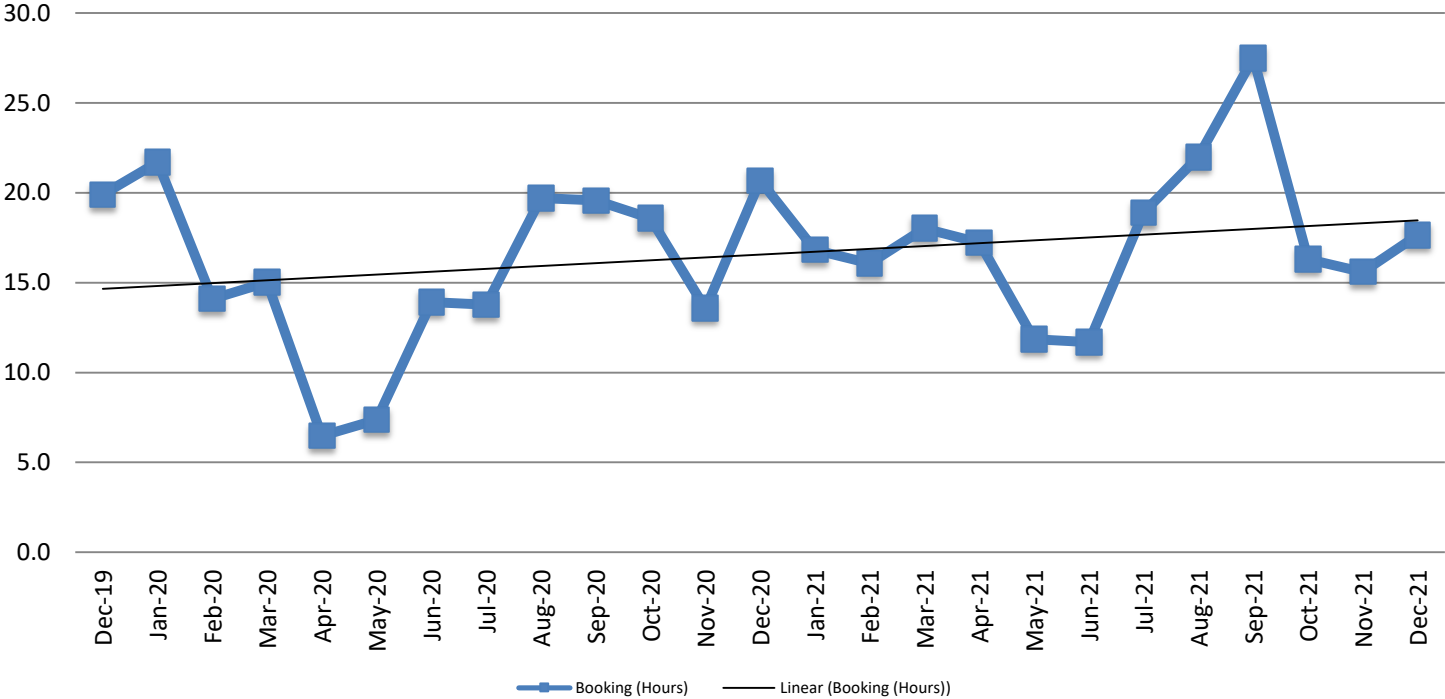


Bookings December	Housing Discharges December
2019: 1,904	2019: 1,853
2020: 1,595	2020: 1,667
2021: 1,785	2021: 1,754



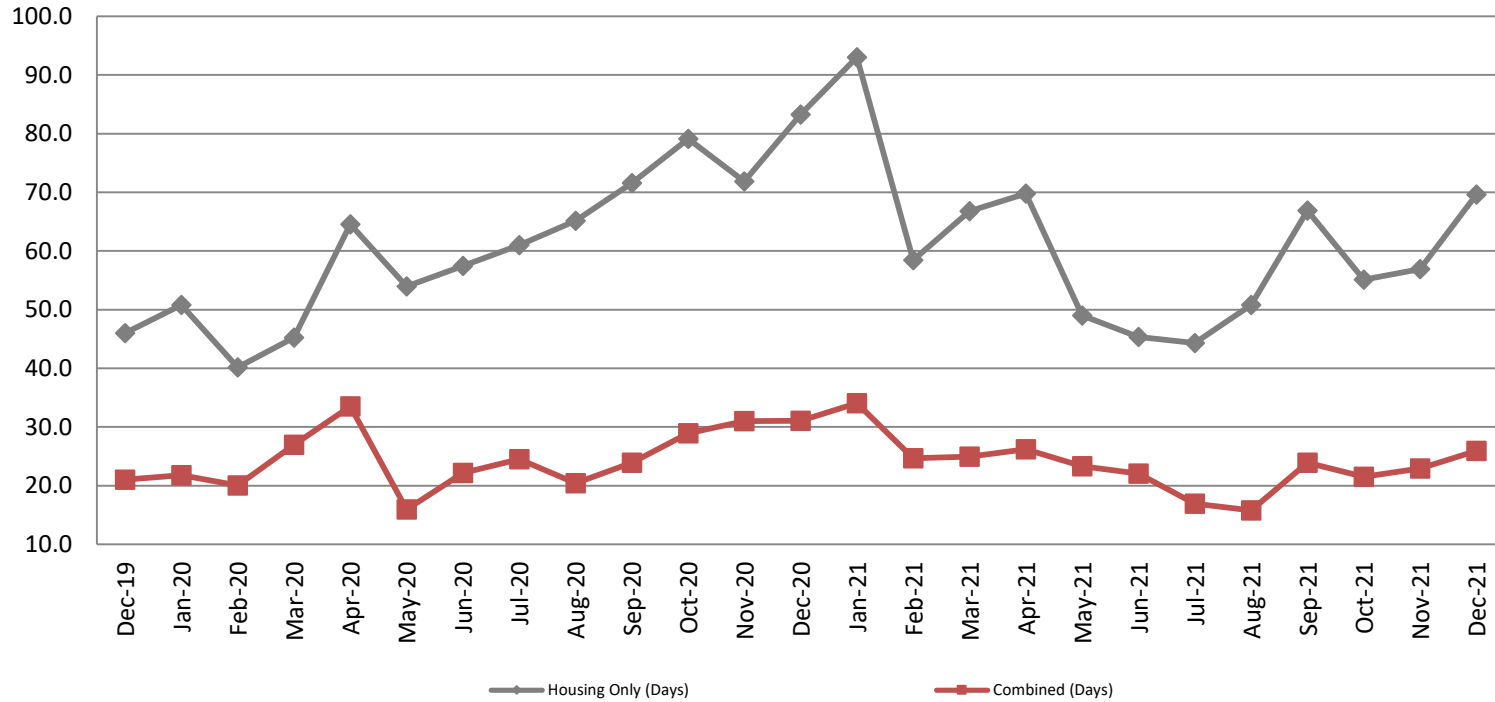
Average Length of Stay: Booking (Hours)

December 2019 - present



December	December YTD Average
2019: 19.9	2019: 15.5
2020: 20.7	2020: 15.4
2021: 17.7	2021: 17.5

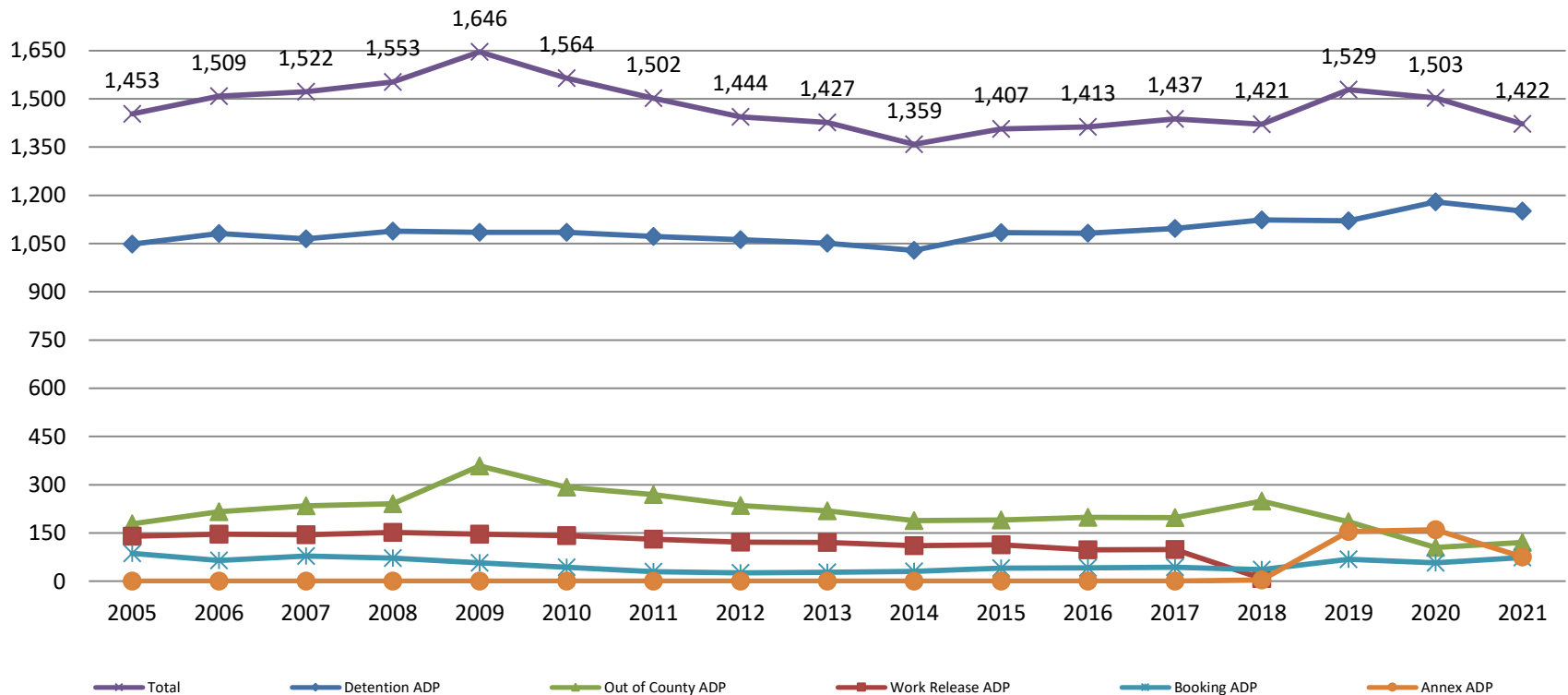
Average Length of Stay: Housing & Combined (Days) December 2019 - present



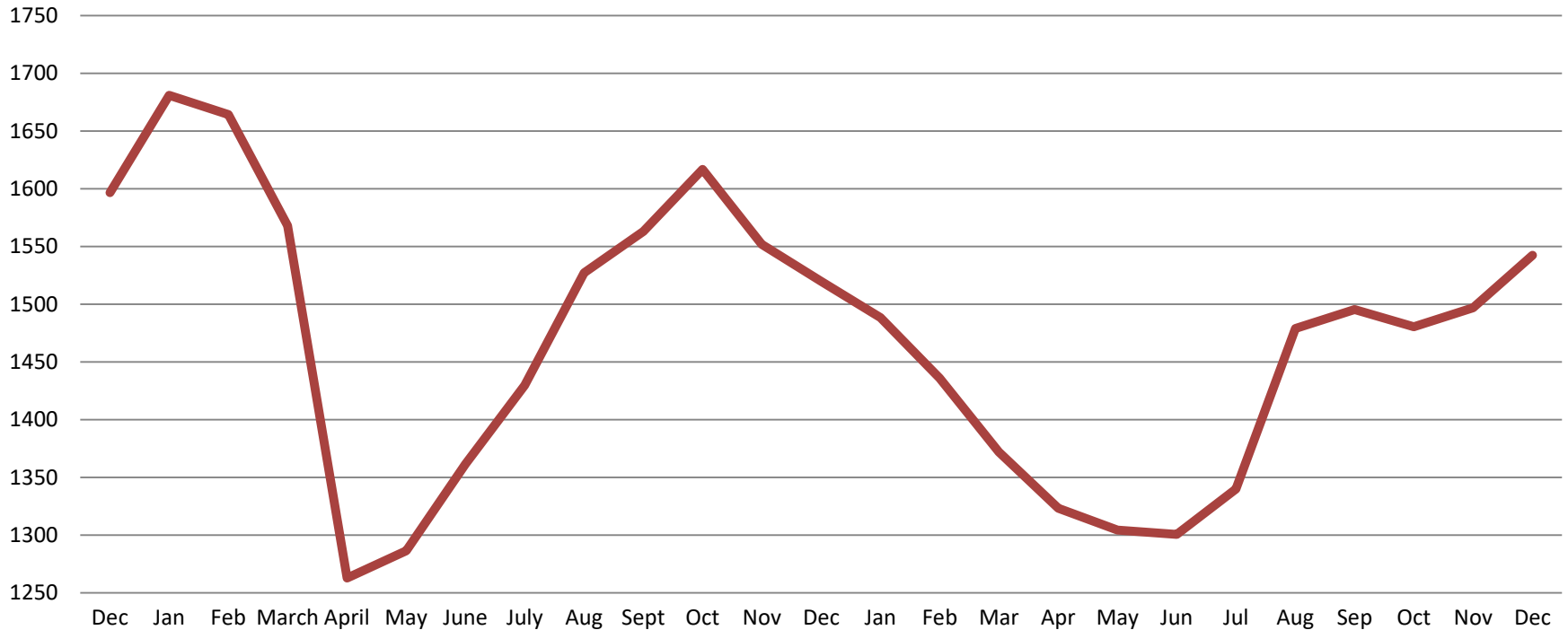
Month Year	Housing Only	Housing YTD AVG	Combined Days	Combined YTD AVG
December 2019	46.0	42.0	21.0	20.7
December 2020	83.3	62.0	31.1	25.0
December 2021	69.6	60.5	25.9	23.5

Jail: Annual Average Daily Population (ADP)

**TRENDS: Booking, Detention, Work Release, & Out of County Annual ADP:
2005 - present**

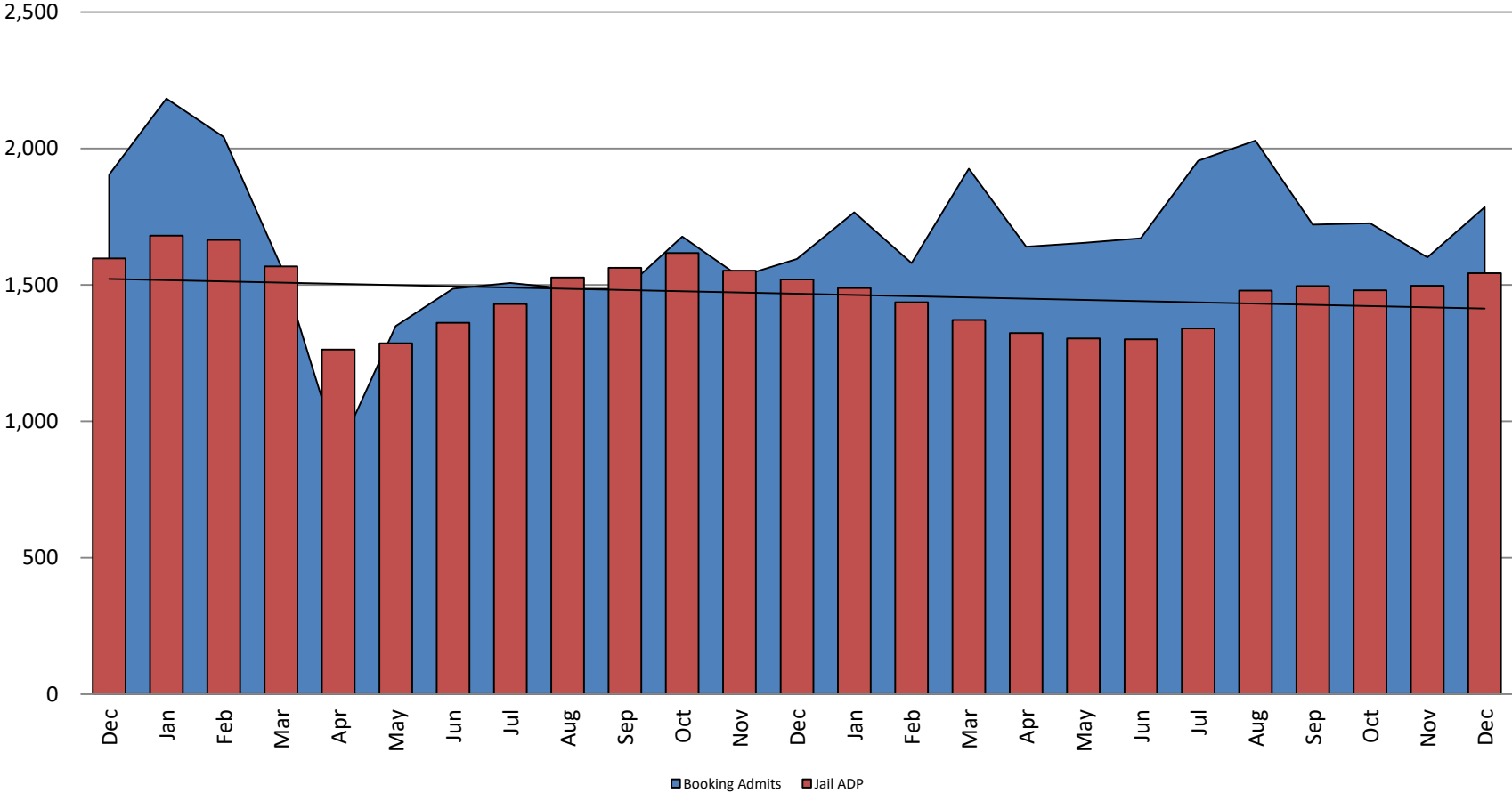


TOTAL MONTHLY ADP: JAIL (Booking, Detention Facility, Annex, & Out of County) December 2019 - present

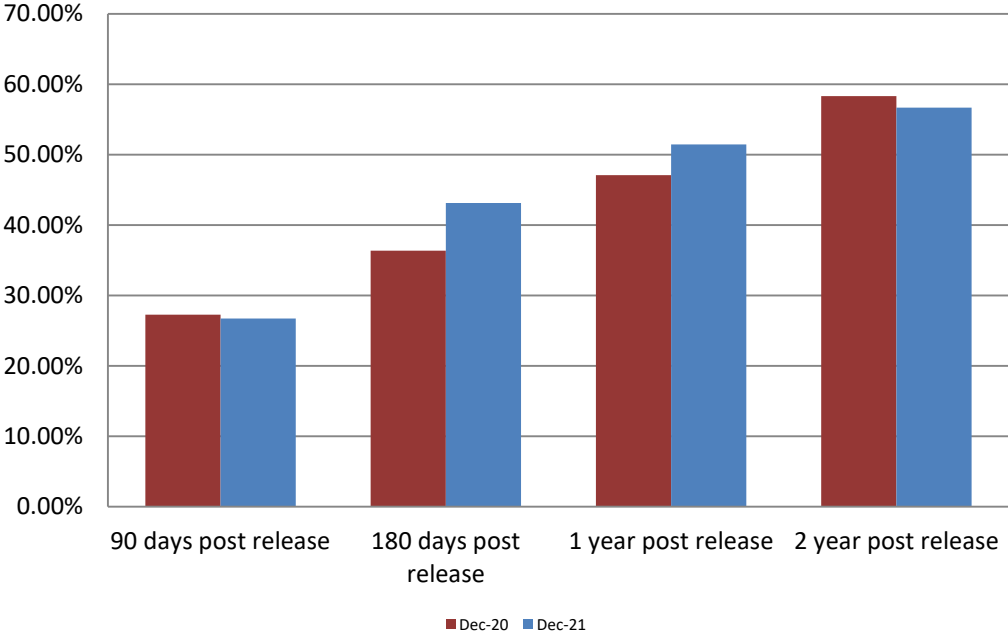


December 2019	December 2020	December 2021
1,597	1,520	1,542

Booking Admits & Total Monthly ADP (Jail): December 2019 - present



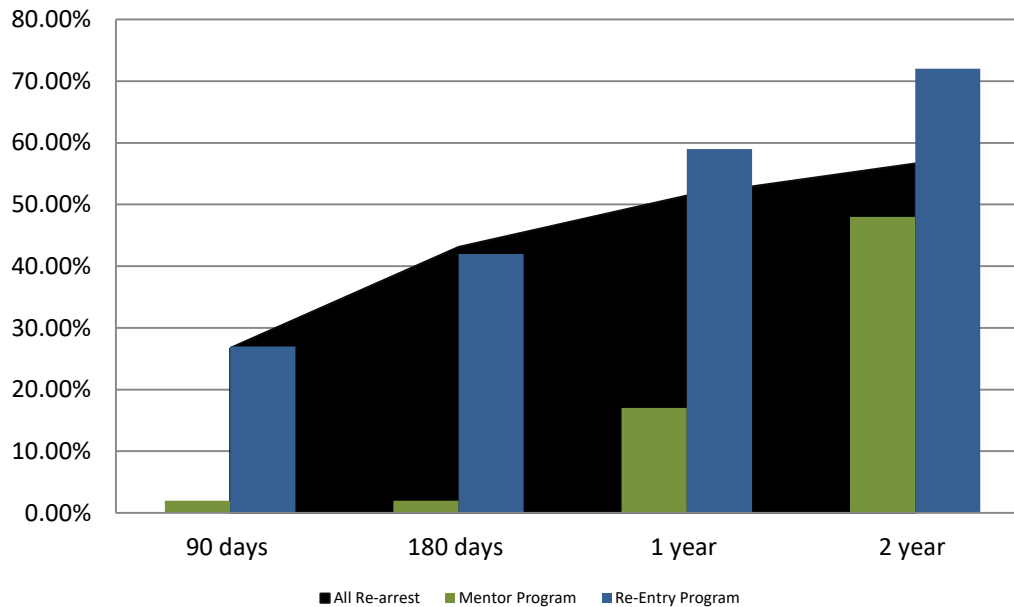
Percent of Released Inmates Rearrested December



Month Year	90 Days	180 Days	1 Year	2 Years
December 2020	27.27%	36.35%	47.07%	58.31%
December 2021	26.74%	43.12%	51.46%	56.66%



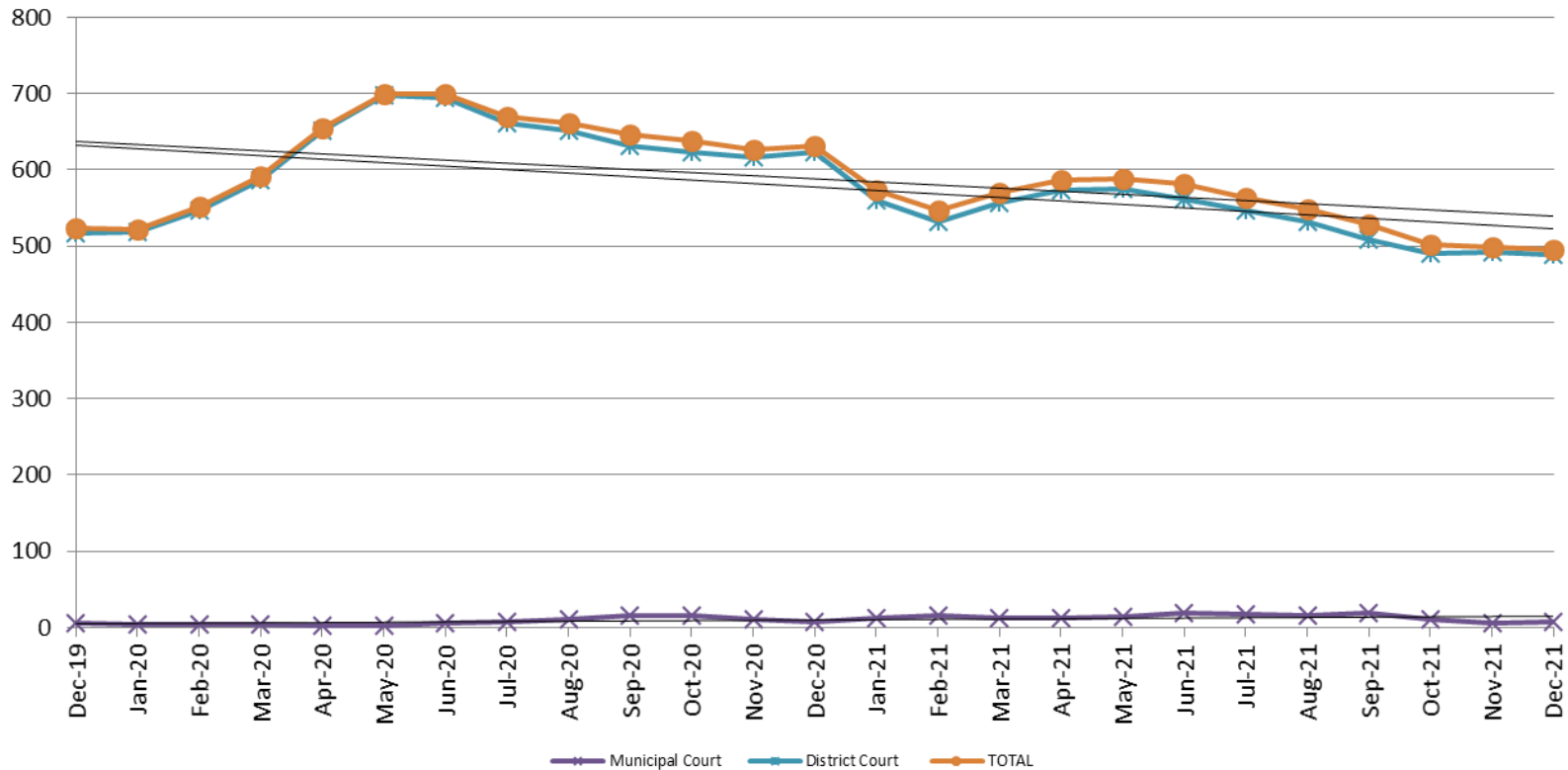
Recidivism by Programs December 2021



December 2021	90 Days	180 Days	1 year	2 years
All Re-arrests	26.74%	43.12%	51.46%	56.66%
Mentor Program	2%	2%	17%	48%
Re-Entry Program	27%	42%	59%	72%



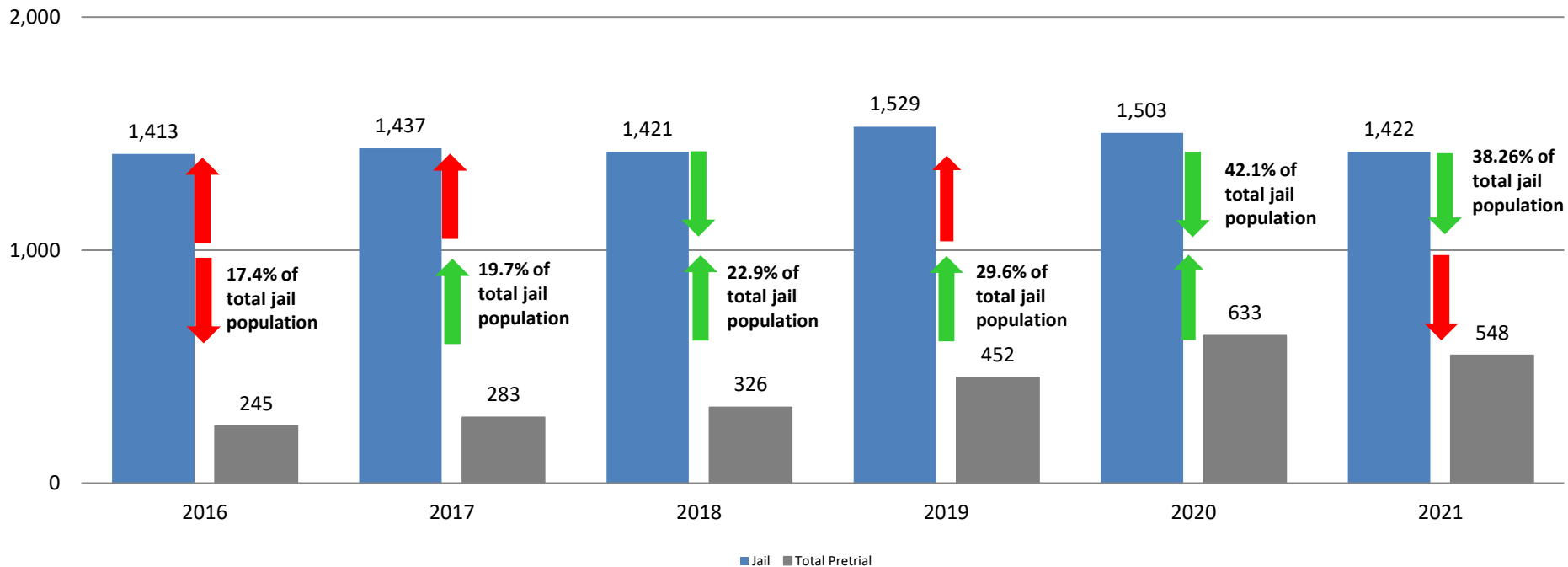
Pretrial Services Program (PSP) Monthly ADP: December 2019 - present



December	2019 ADP	2020 ADP	2021 ADP	2019 YTD Avg.	2020 YTD Avg.	2021 YTD Avg.
Muni. Court	6	8	7	12	8	13.5
Dist. Court	517	623	489	440	625	534.8
Total	523	631	496	452	633	548.4

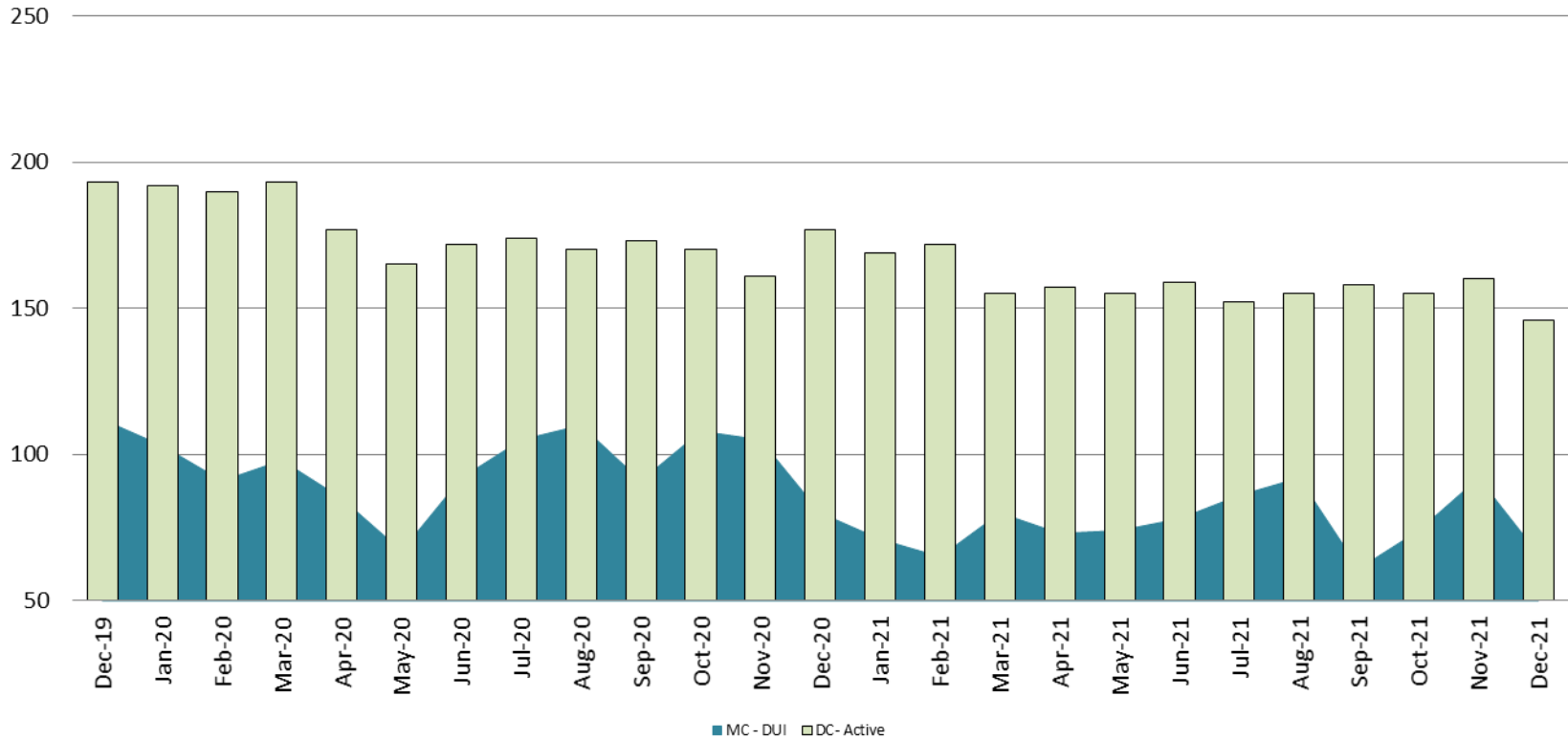
Correlation: Total & PSP

Total Annual ADP: 2016 - present



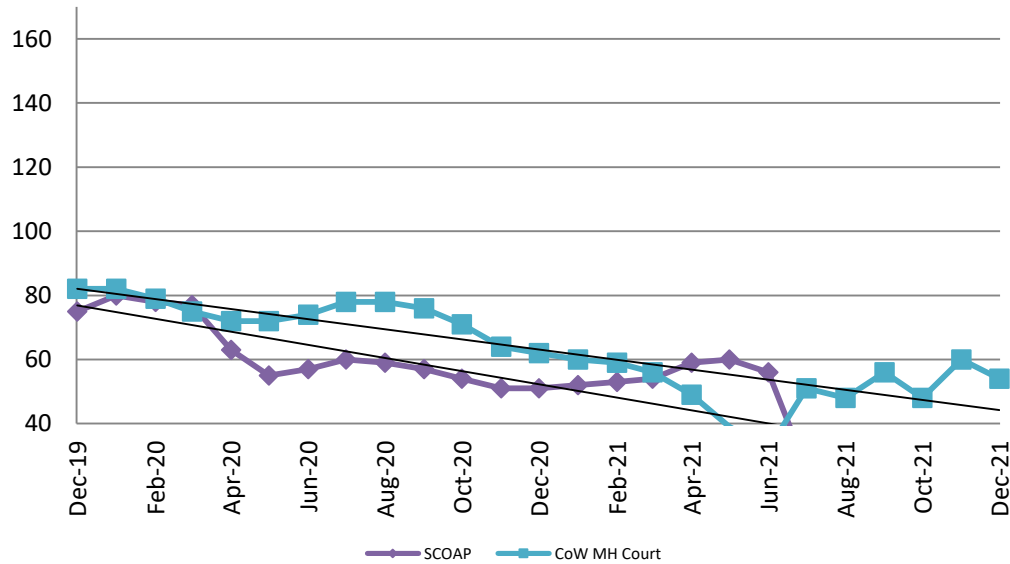
Diversion - Active Caseload

December 2019 - present

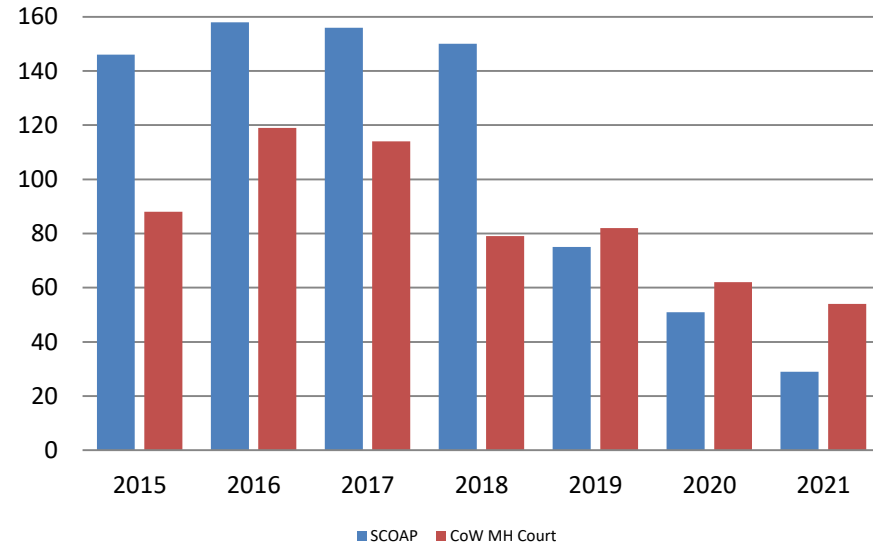


December	2019	2020	2021	2019 YTD Avg.	2020 YTD Avg.	2021 YTD Avg.
Muni. Court- DUI	112	80	66	105	95	76
Dist. Court- Active	193	177	146	191	176	158

Mental Health - ADP December 2019 - present

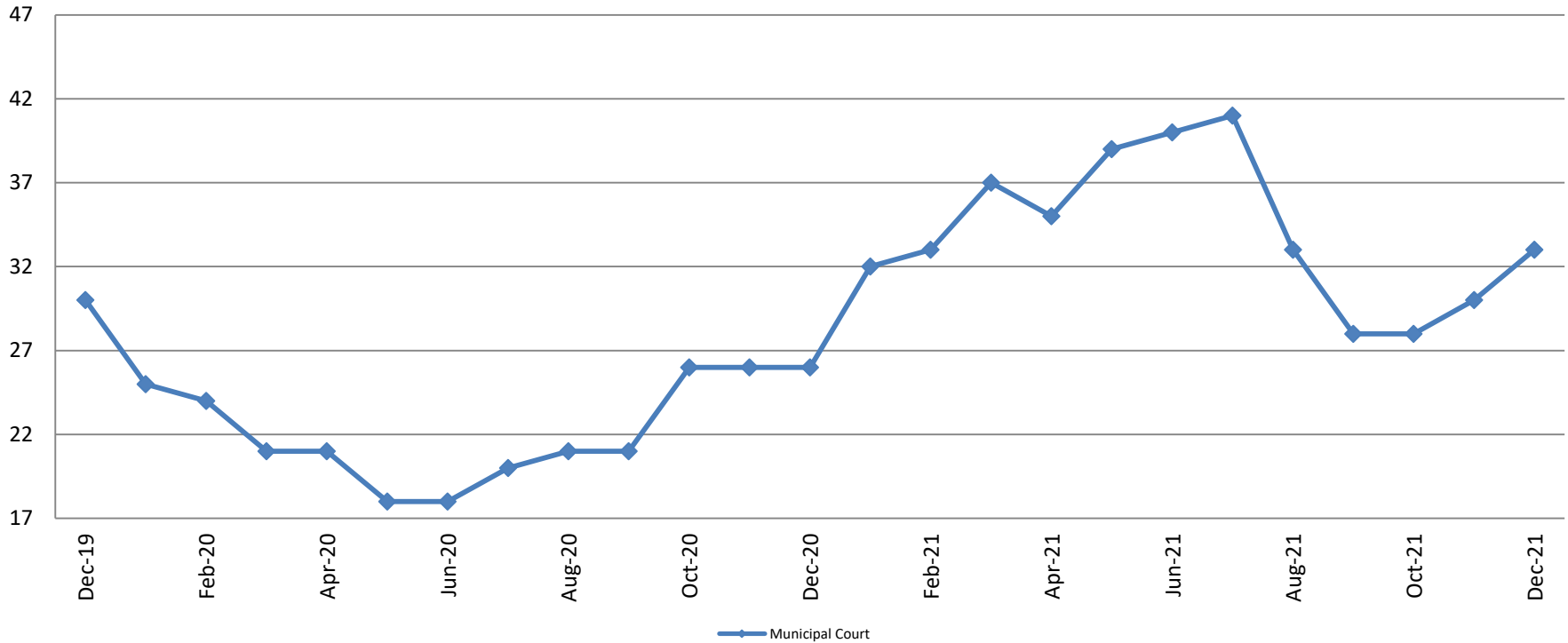


Mental Health ADP Year over Year - December



December	2019 ADP	2020 ADP	2021 ADP	2019 YTD Avg.	2020 YTD Avg.	2021 YTD Avg.
SCOAP	75	51	29	98	62	41
MH Court	82	62	54	94	74	51

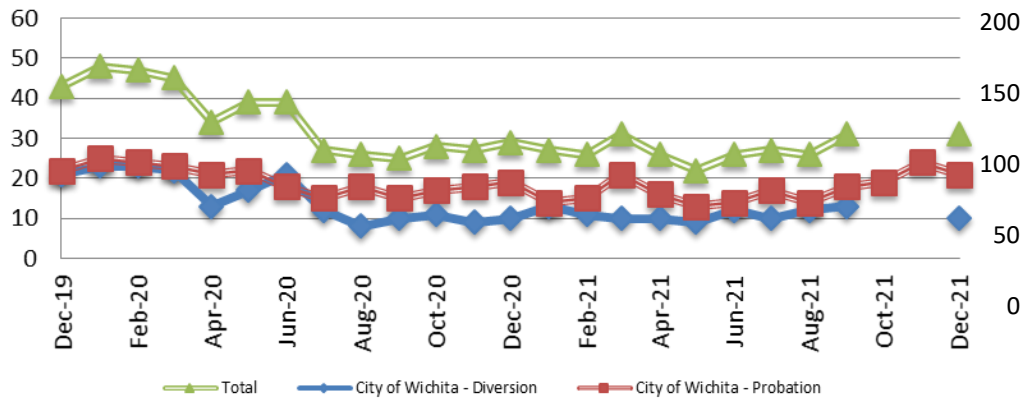
Day Reporting - Active Caseload December 2019 - present



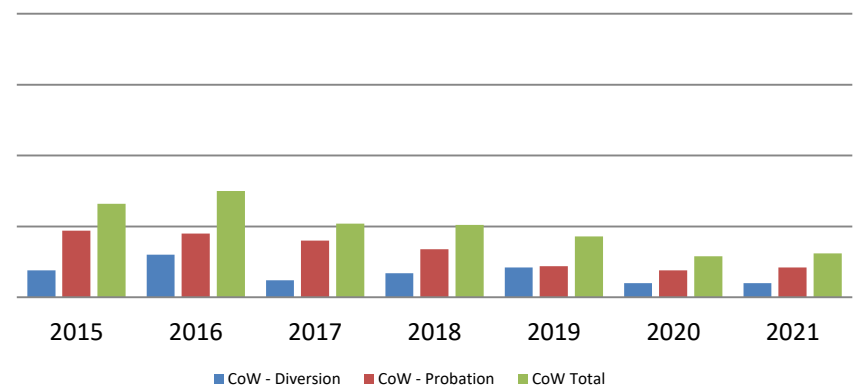
December	2016	2017	2018	2019	2020	2021
Muni. Court	26	37	26	30	26	33
Muni. Court YTD Avg.	39	36	33	30	22	34



Drug Court - City of Wichita ADP: December 2019 - present

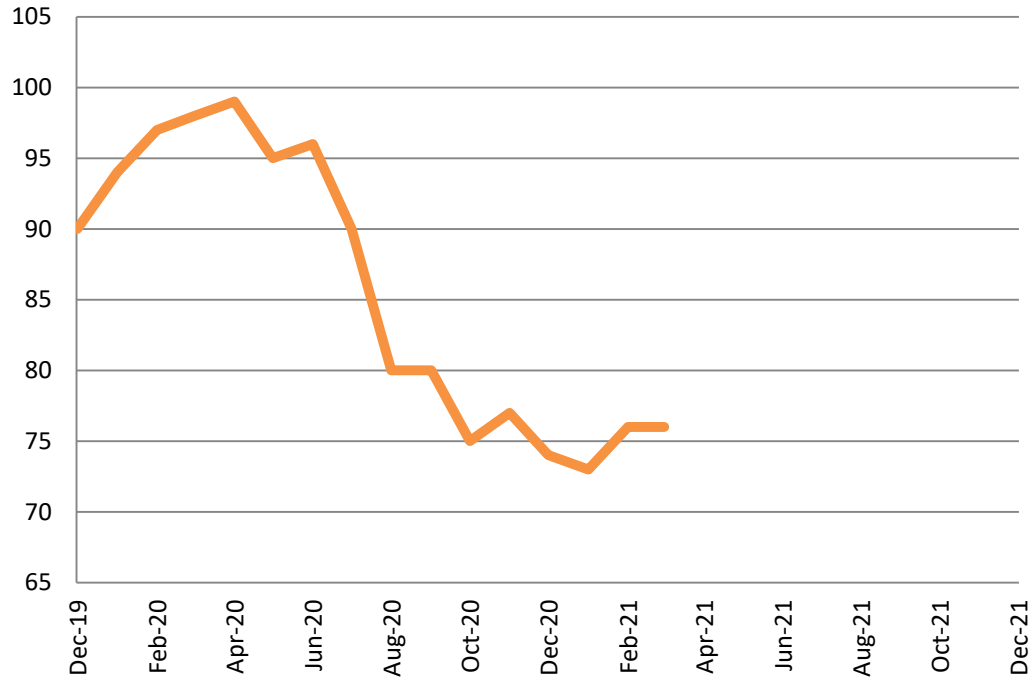


Drug Court- City of Wichita Year over Year - December



December	2019	2020	2021
Diversion	21	10	10
Probation	22	19	21
Total	43	29	31

Drug Court - Sedgwick County ADP: December 2019 - present



December	2019	2020	2021
Sedg. Co. ADP	90	74	N/A
YTD Avg.	97	88	N/A



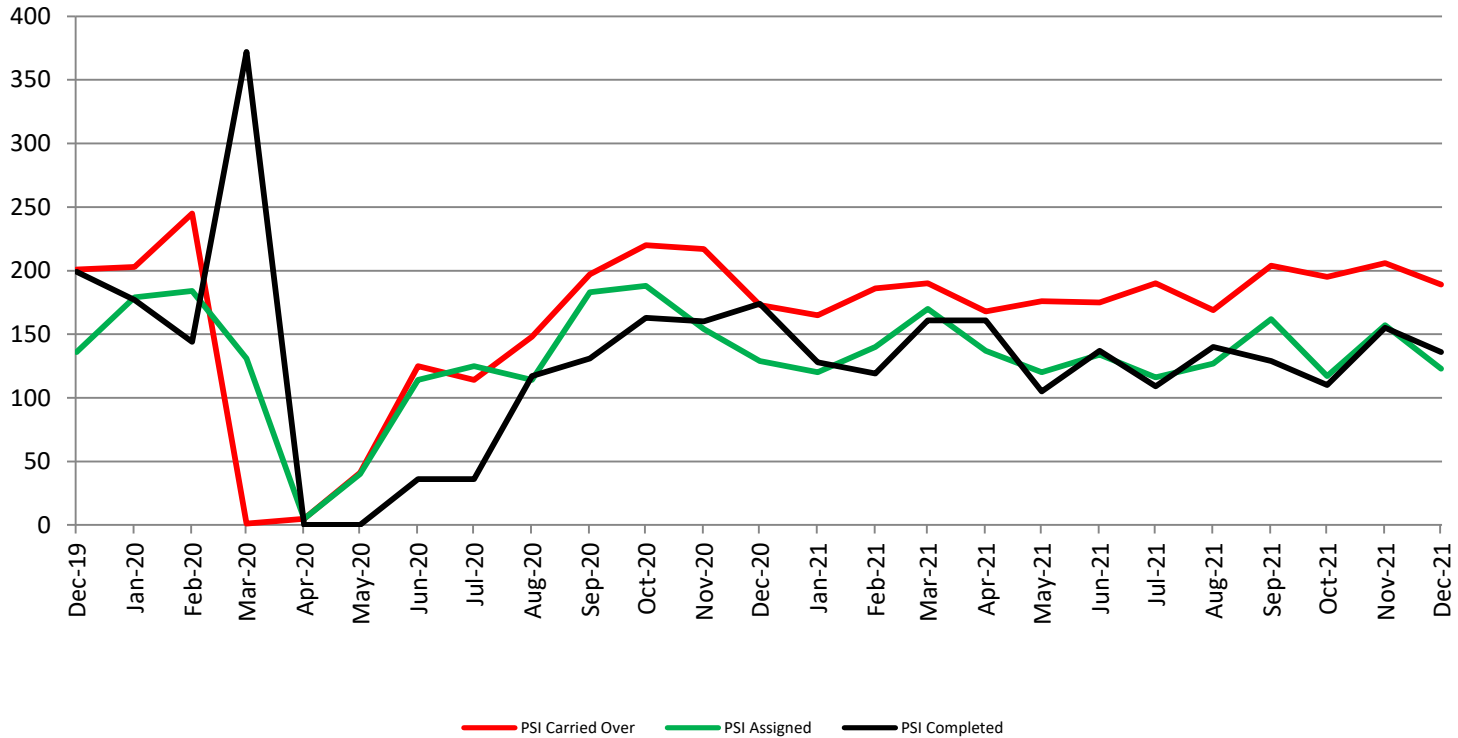
Probation - Active Caseloads December 2019 - present



December	2019	2020	2021	2019 YTD Avg.	2020 YTD Avg.	2021 YTD Avg.
Dist. Court Probation	1,701	1,472	1,737	1,871	1,574	1,717
Muni. Court Probation	1,303	983	1,091	1,254	928	1,064



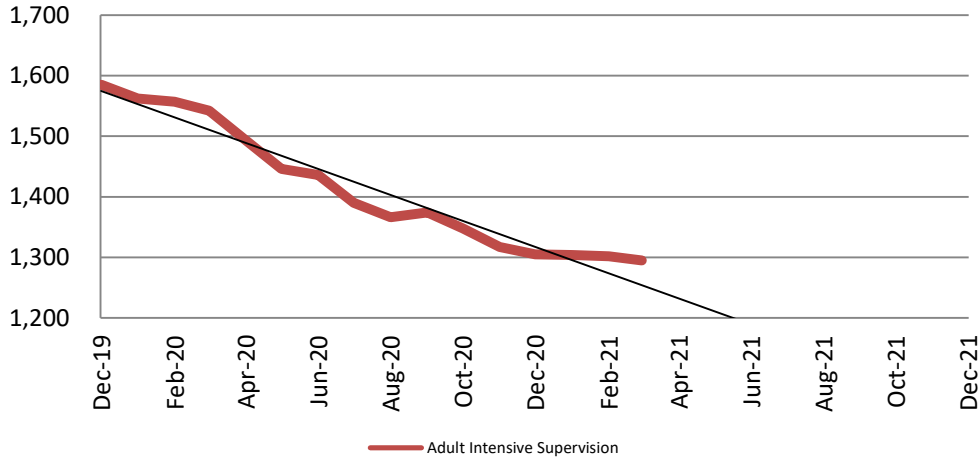
District Court Probation: Pre-Sentence Investigation December 2019 - present



December	2019	2020	2021
Carried Over	201	173	189
Assigned	136	129	123
Completed	199	174	136

Community Corrections

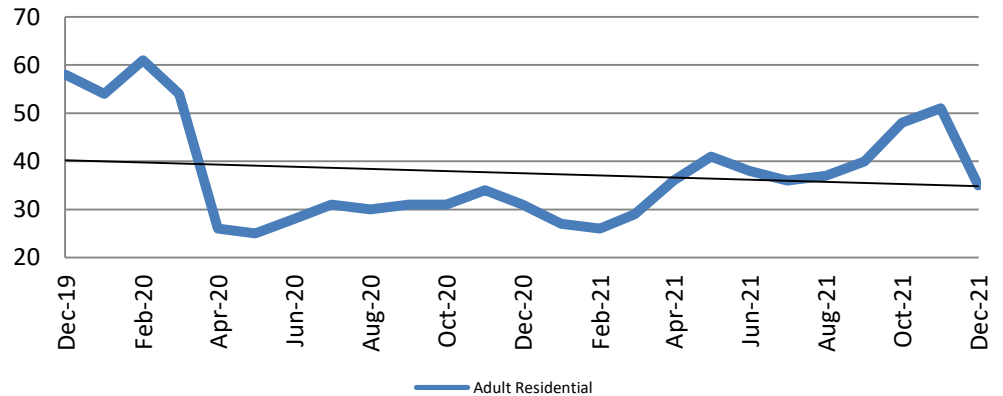
**Adult Intensive Supervision Probation (AISP):
ADP December 2019 - present**



Year	December	December YTD Avg.
2019	1,585	1,553
2020	1,305	1,428
2021	N/A	N/A

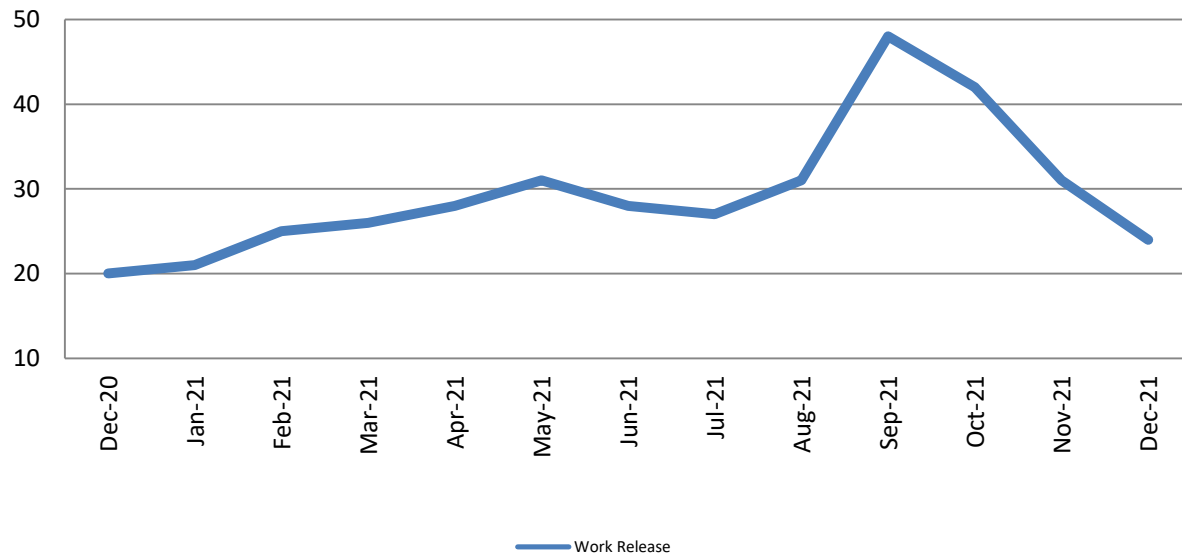
**Adult Residential: ADP
December 2019 - present**

Year	December	December YTD Avg.
2019	58	65
2020	31	36
2021	35	37



Community Corrections

Work Release: ADP December 2020 - present

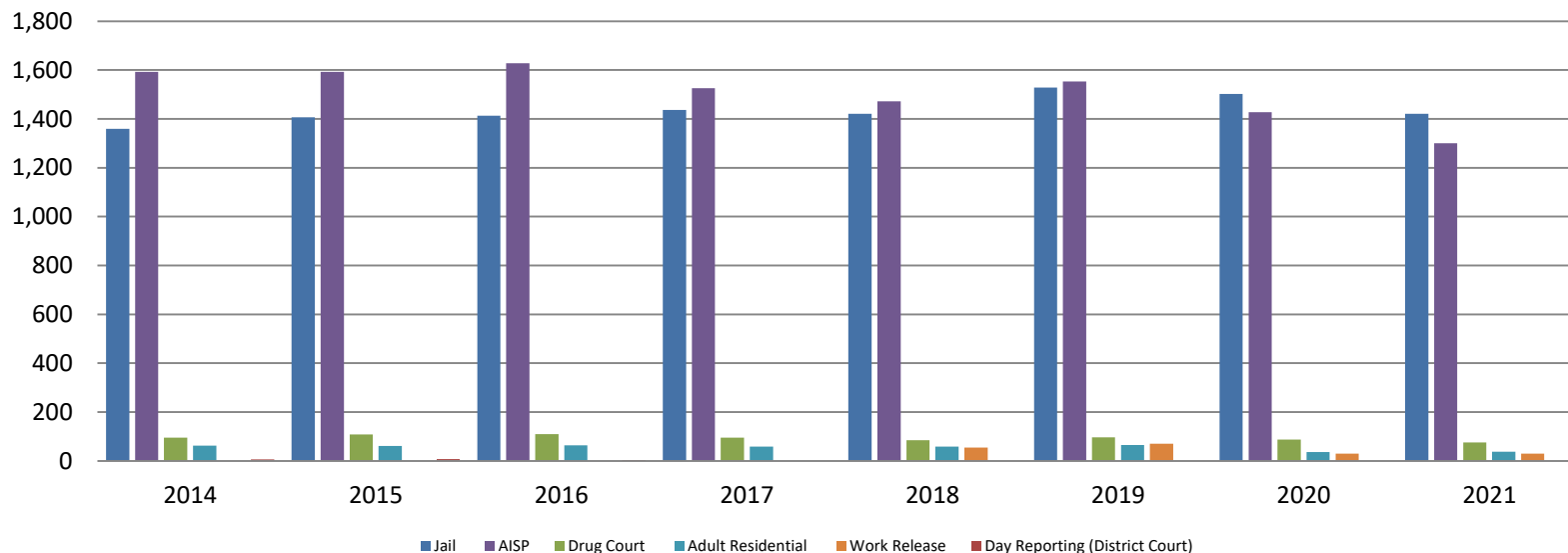


Month Year	Total	YTD Avg.
December 2020	20	30
December 2021	24	30



Correlation: Total & Sedgwick County Programs (Adult)

Total Annual ADP 2014 - present



	2019	2020	2021
Jail	1,529	1,503	1,422
AISP	1,553	1,428	1,300
Drug Court	97	88	75
Adult Residential	65	36	37
Work Release	71	30	30
Day Reporting (DC)	0	0	0



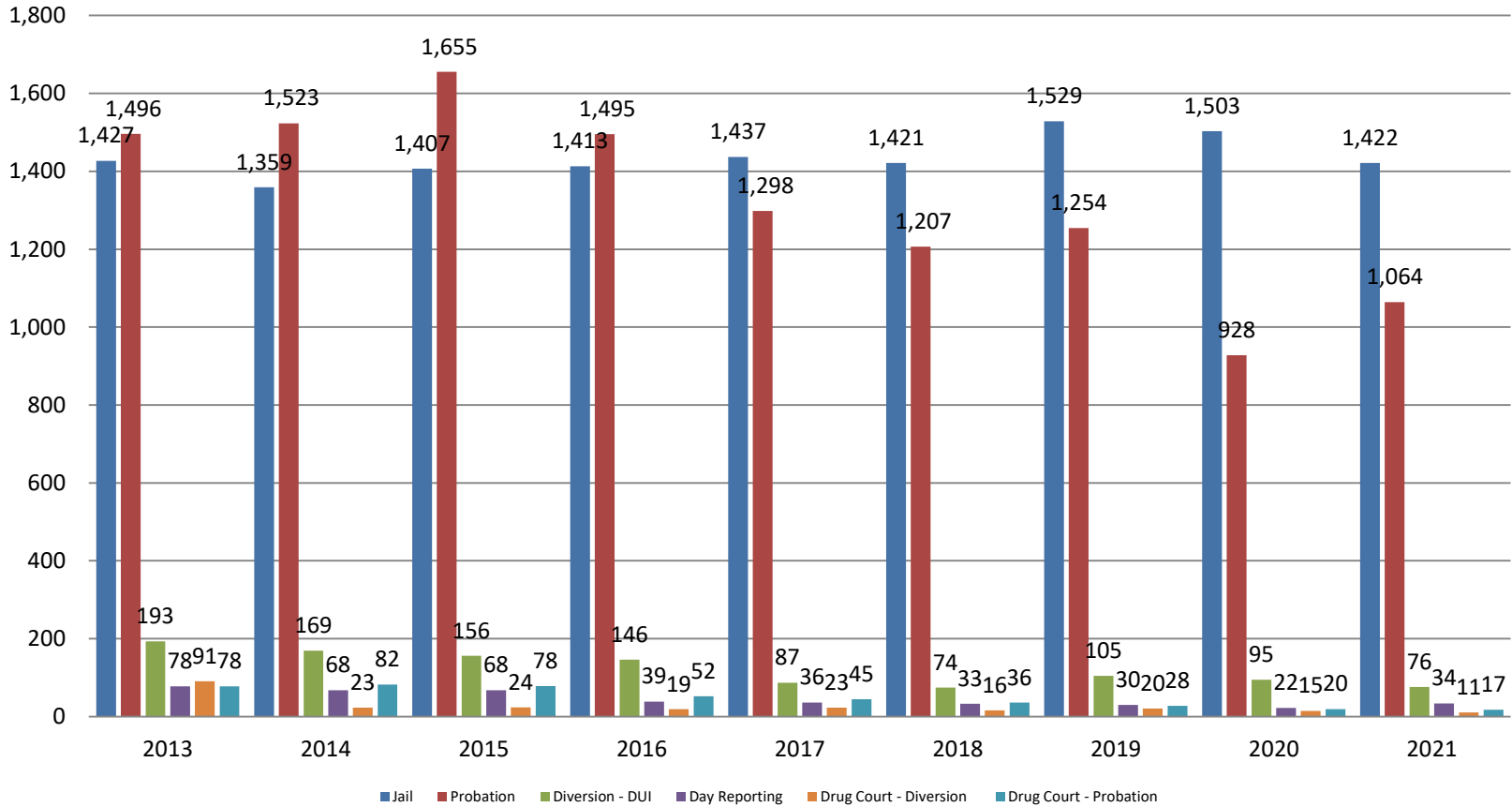
Correlation: Total & District Court Programs

Total Annual ADP: 2013 - present



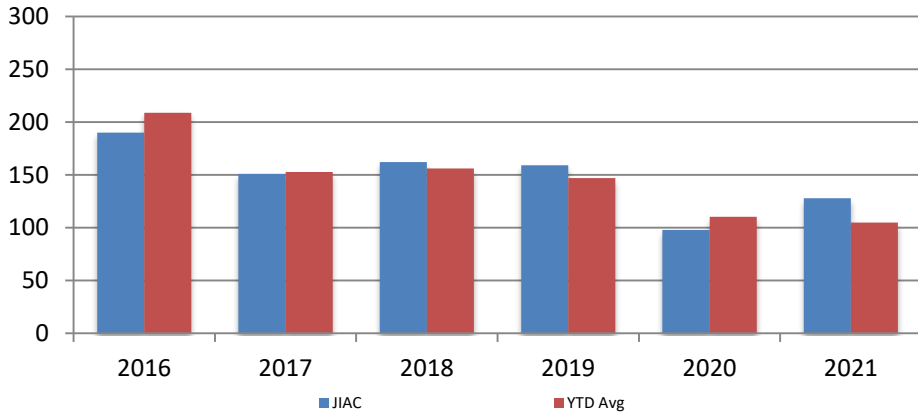
Correlation: Total & City of Wichita / Municipal Court Programs

Total Annual ADP: 2013 - present



Juvenile

JIAC Intakes
December 2016 - present

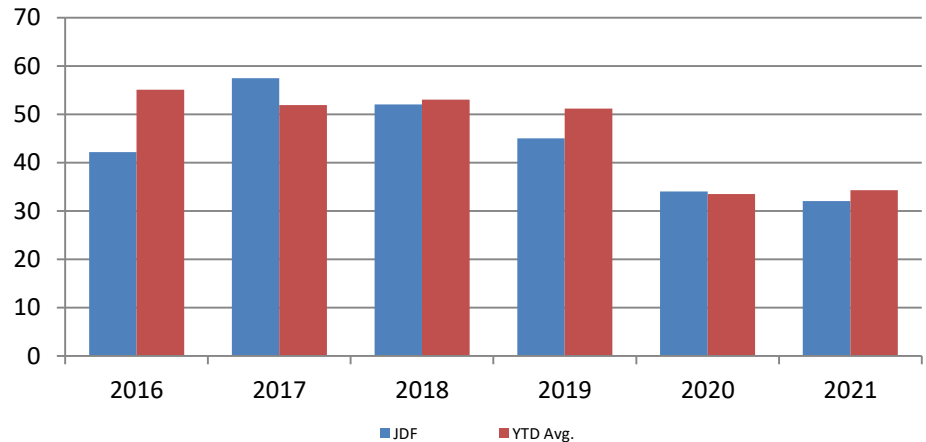


Year	December	December YTD Avg.
2016	190	209
2017	151	153
2018	162	156
2019	159	147
2020	98	110
2021	128	105

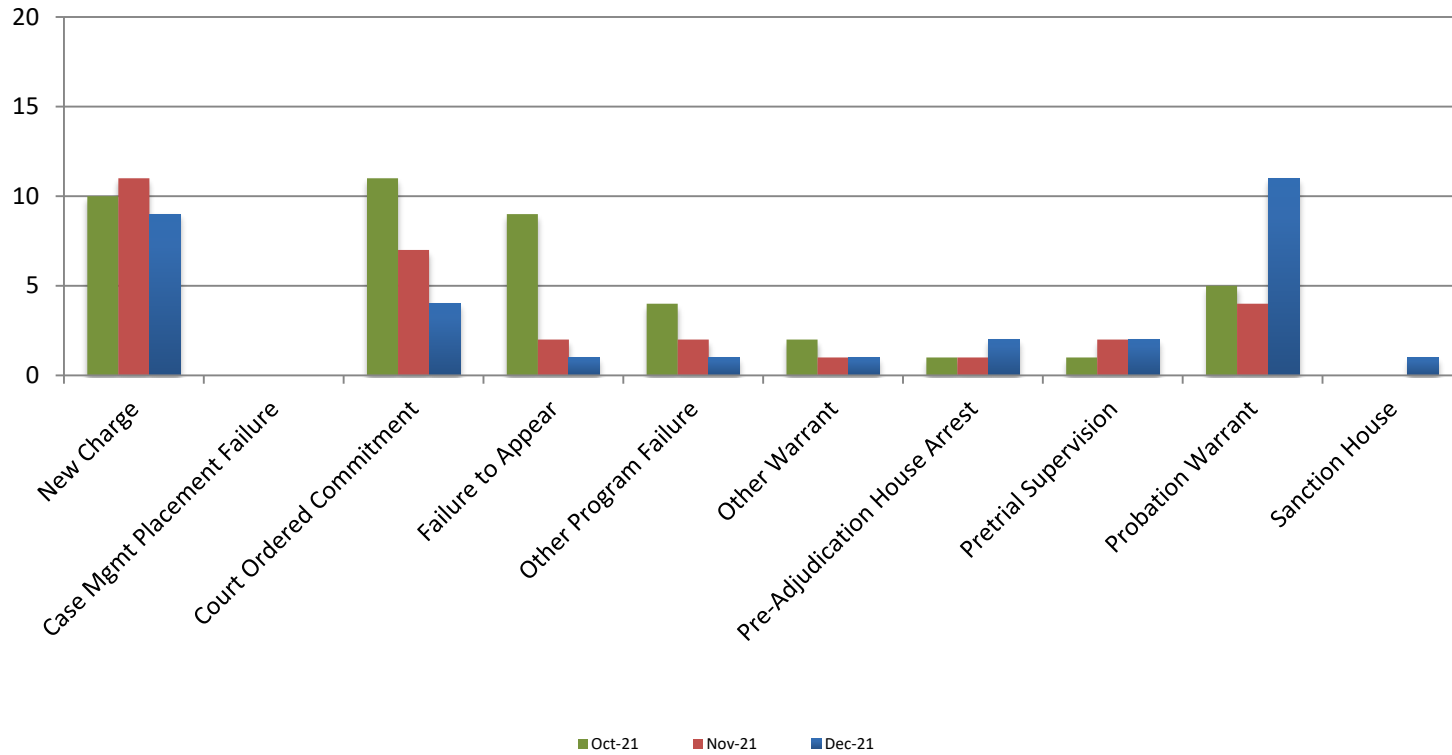
Year **December** **December YTD Avg.**

2016	42	55
2017	57	52
2018	52	53
2019	45	51
2020	34	34
2021	32	34

JDF ADP
December 2016 - present



Reason for JDF Admits



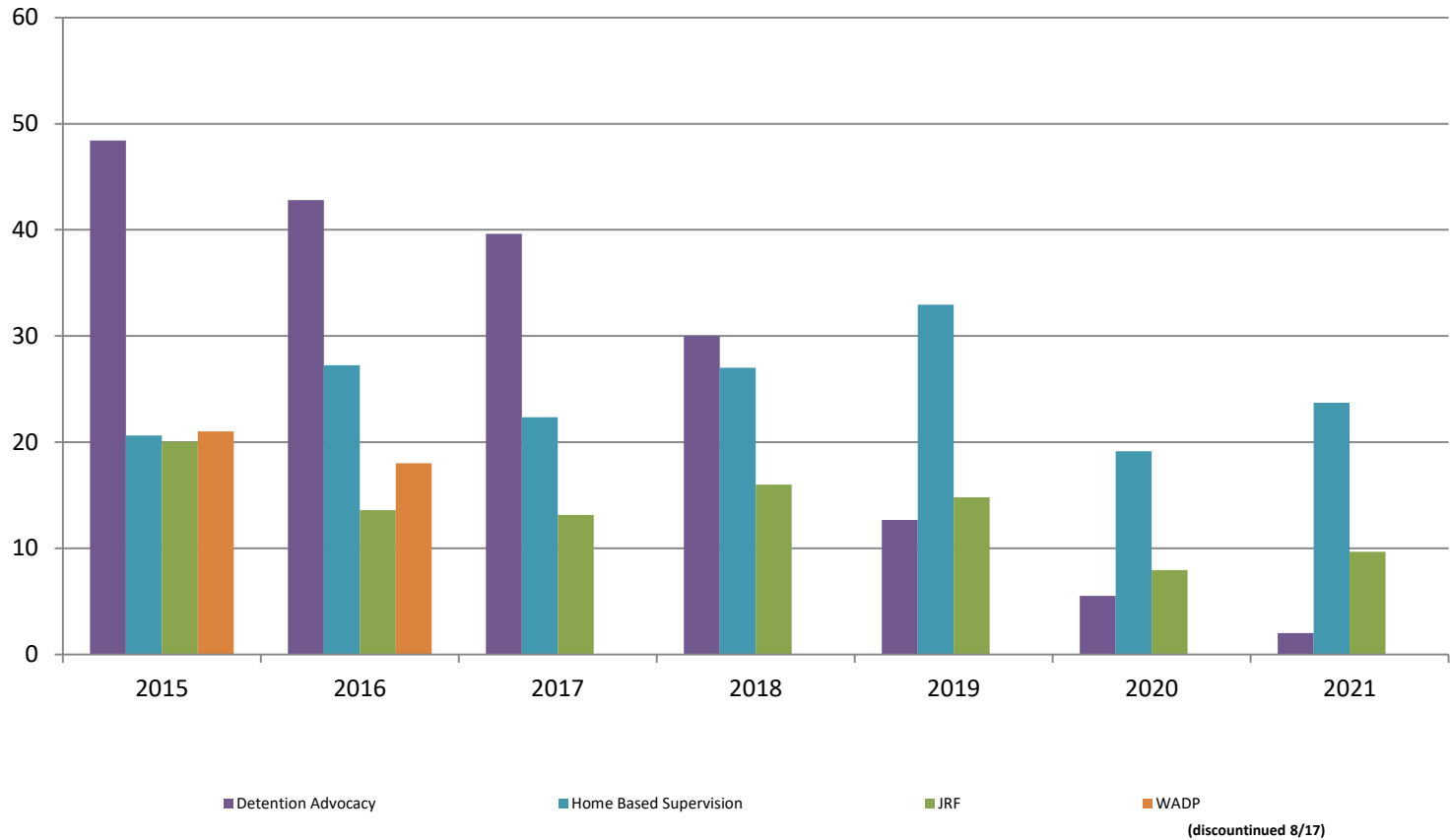
Reason for JDF Admits

Reason	December 2020	December 2021
New Charges	10	9
Case Management Placement Failures	0	0
Court Ordered Commitment	8	4
Failure to Appear	5	1
Other Program Failure	2	1
Other Warrant	1	1
Pre-Adjudication House Arrest	2	2
Pretrial Supervision	0	2
Probation Warrant	6	11
Sanction House	0	1



Juvenile Detention Alternatives

ADP: December 2015 - present



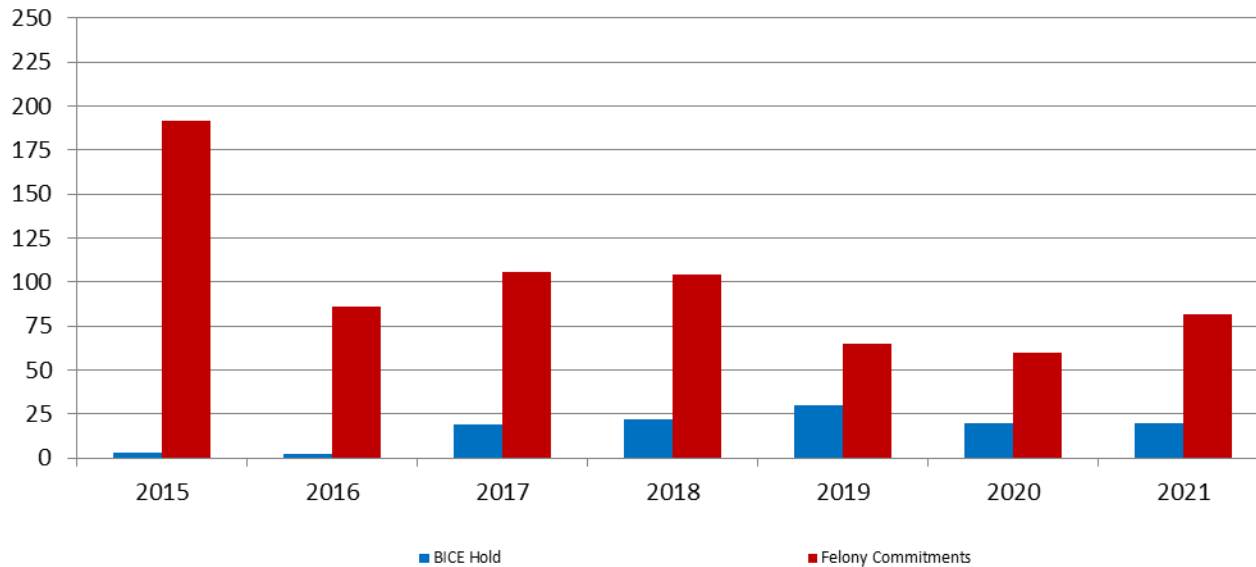
Juvenile Detention Services

December ADP	2018	2019	2020	2021
Juvenile Detention Facility	52	45	34	32
Juvenile Residential Facility	16	15	8	10
Home Based Supervision	27	33	19	24
Detention Advocacy Case Management Services	30	13	6	2
Weekend Alternative Detention Program (total)	0	N/A	N/A	N/A

December YTD AVERAGE	2018	2019	2020	2021
Juvenile Detention Facility	53	51	34	34
Juvenile Residential Facility	14	14	15	11
Home Based Supervision	25	28	28	23
Detention Advocacy Case Management Services	32	19	8	3
Weekend Alternative Detention Program	0	N/A	N/A	N/A

Monthly Jail Snapshot: December 2021

Snapshots December 2015 - present

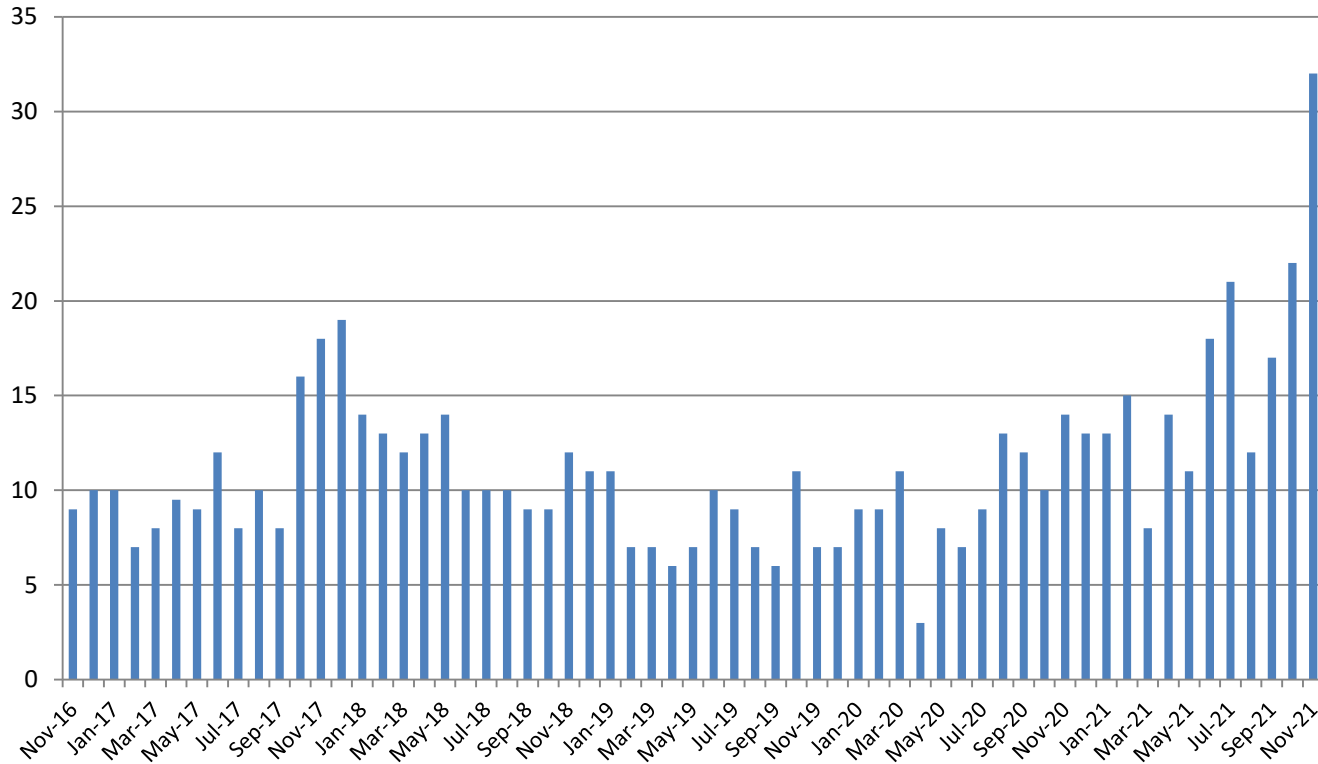


BICE Hold	2015	2016	2017	2018	2019	2020	2021
December	3	2	19	22	30	20	20

Felony Commitments	2015	2016	2017	2018	2019	2020	2021
December	192	86	106	104	65	60	82



Journal Entry Completion (Average Days) November 2016 - present



November	2016	2017	2018	2019	2020	2021
Avg. Days	9	18	12	7	14	32
YTD Avg.	12	11	11	8	10	17

