

Criminal Justice Coordinating Council

Population Report & Program Trends

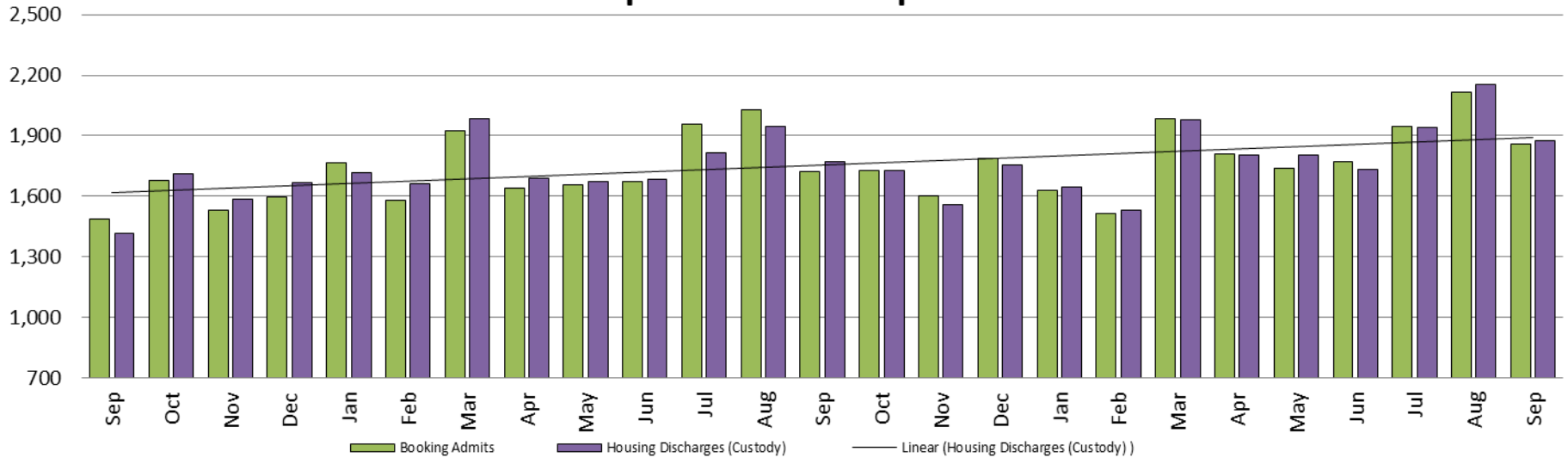
September 2022



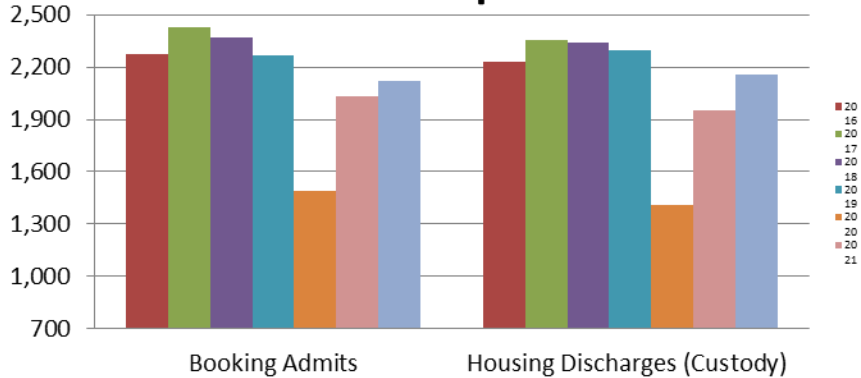
Sedgwick County...
working for you

Detention Facility

Booking Admits & Housing Discharges from Custody September 2020 - present

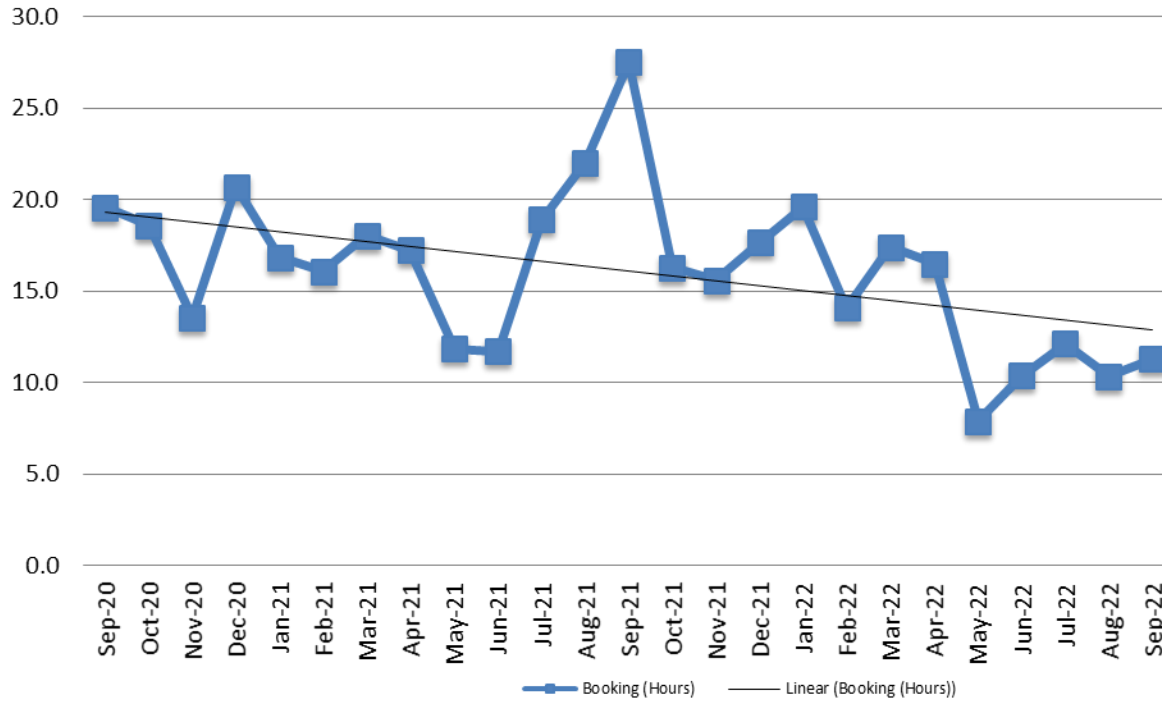


Bookings Year over Year: Month of September



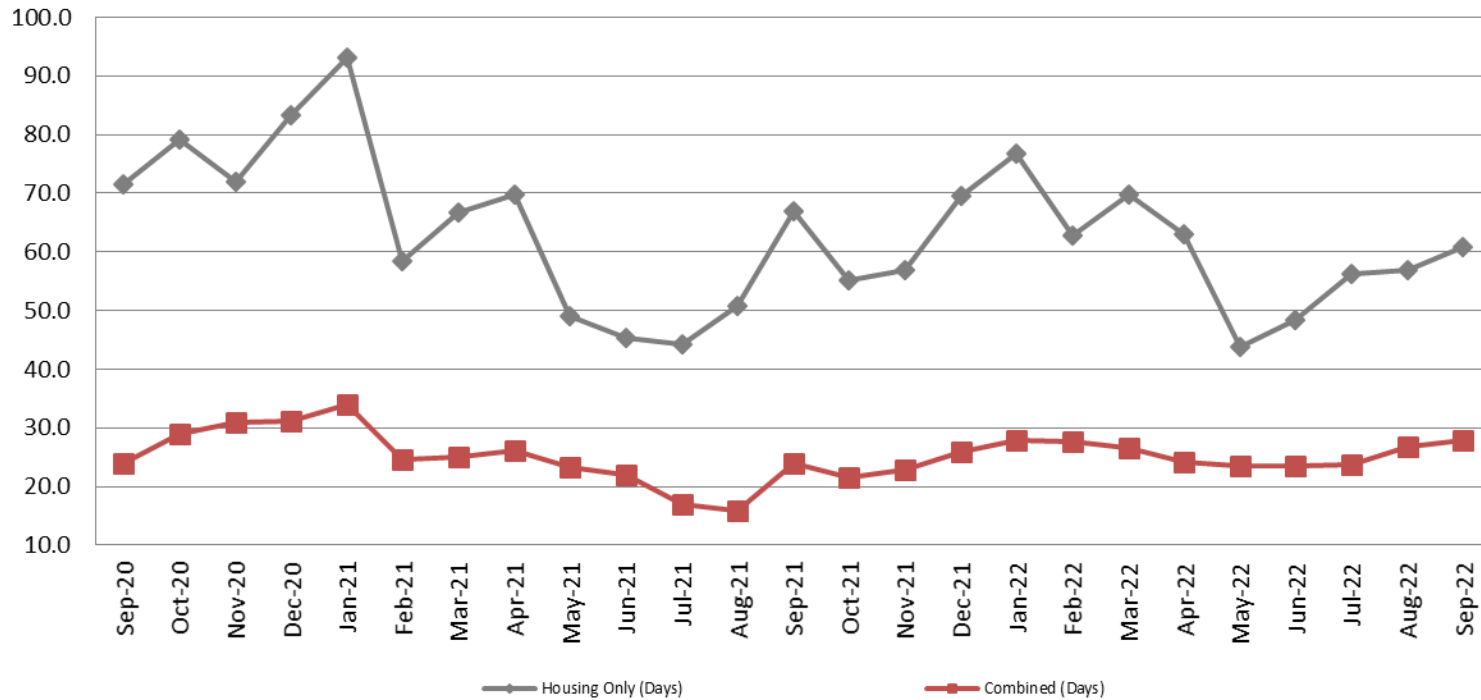
Bookings September	Housing Discharges September
2020: 1,485	2020: 1,417
2021: 1,726	2021: 1,770
2022: 1,859	2022: 1,873

Average Length of Stay: Booking (Hours) September 2020 - present



September	September YTD Average
2020: 19.6	2020: 14.6
2021: 27.5	2021: 17.8
2022: 11.28	2022: 12.5

Average Length of Stay: Housing & Combined (Days) September 2020 - present

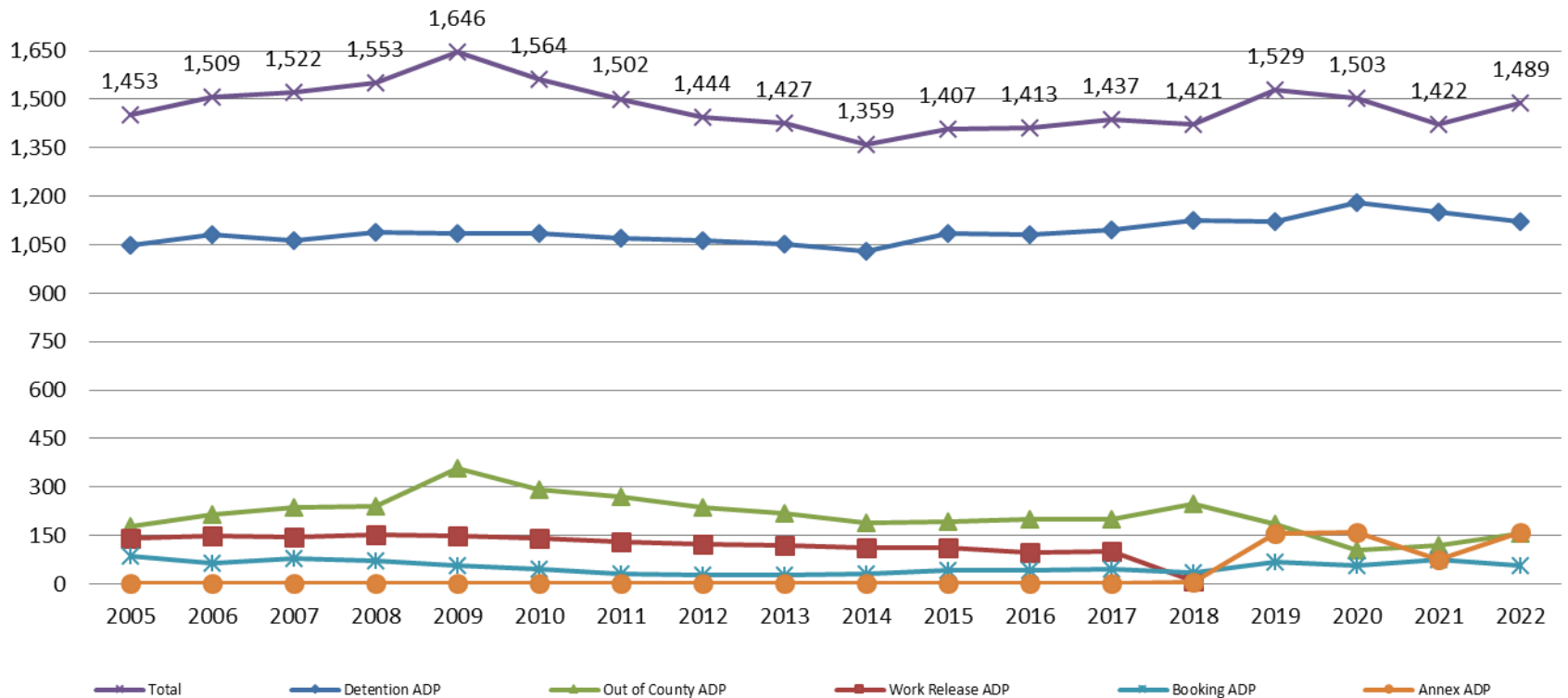


Month Year	Housing Only	Housing YTD AVG	Combined Days	Combined YTD AVG
Sept. 2020	71.6	56.7	23.9	23.2
Sept. 2021	66.9	60.5	23.9	23.5
Sept. 2022	60.9	57.7	27.9	25.5

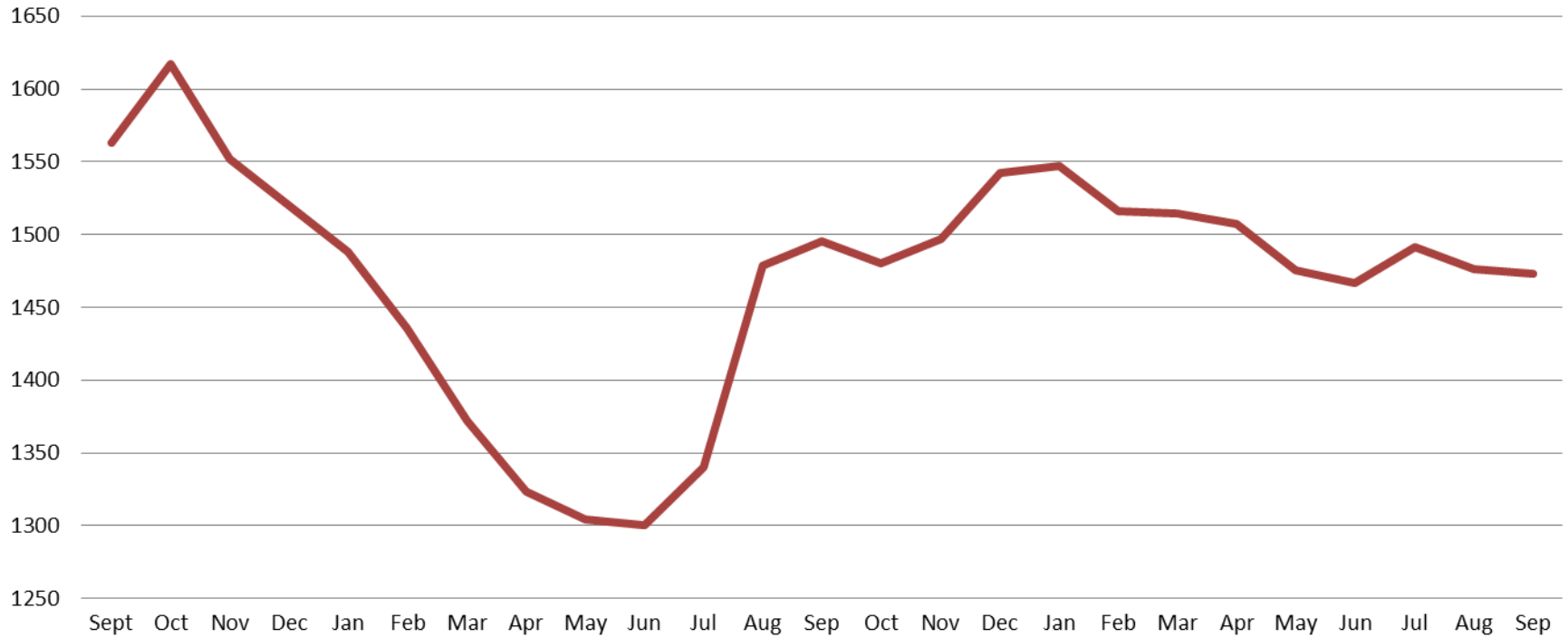


Jail: Annual Average Daily Population (ADP)

TRENDS: Booking, Detention, Work Release, & Out of County Annual ADP: 2005 - present

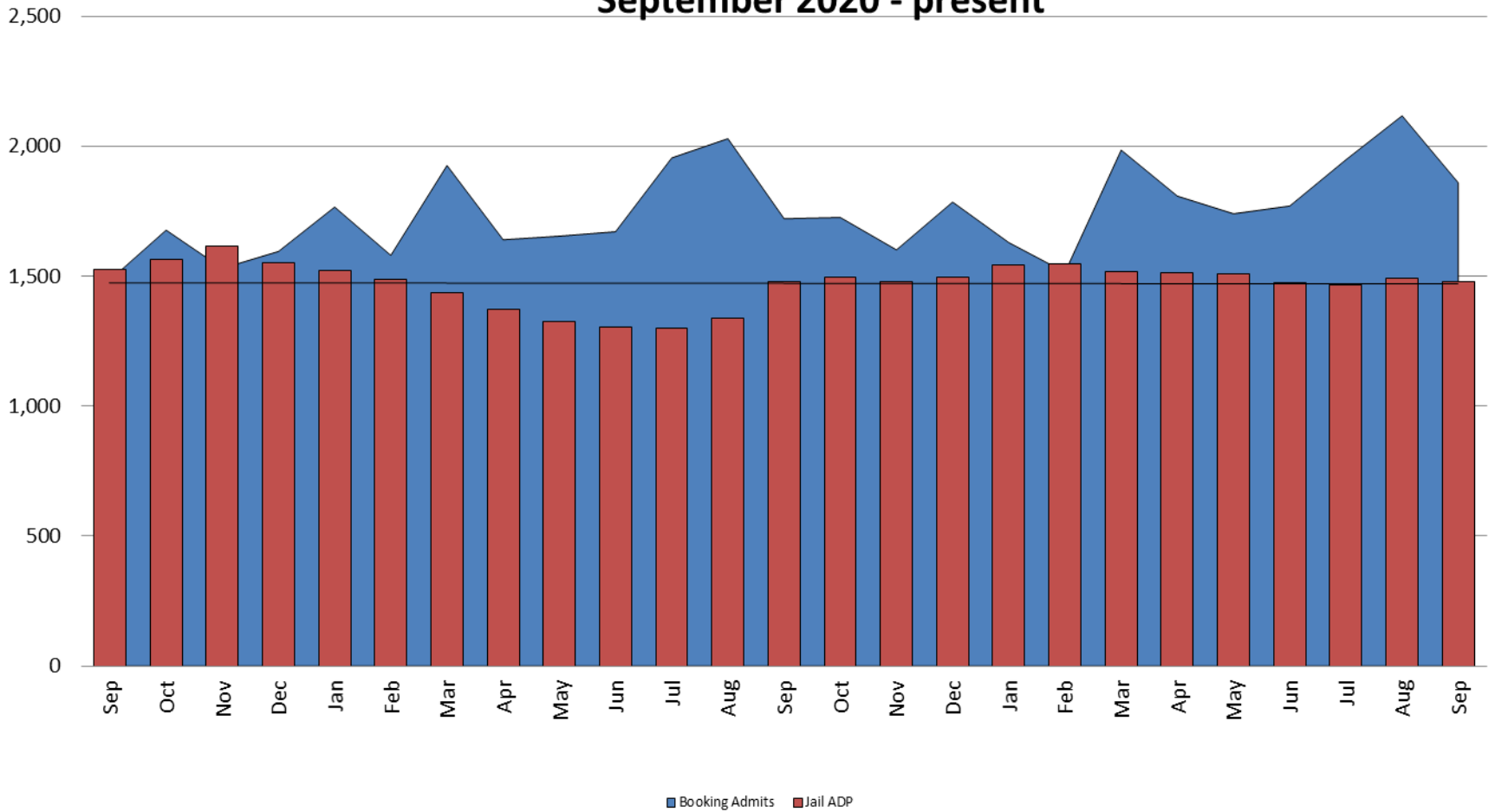


TOTAL MONTHLY ADP: JAIL (Booking, Detention Facility, Annex, & Out of County) September 2020 - present

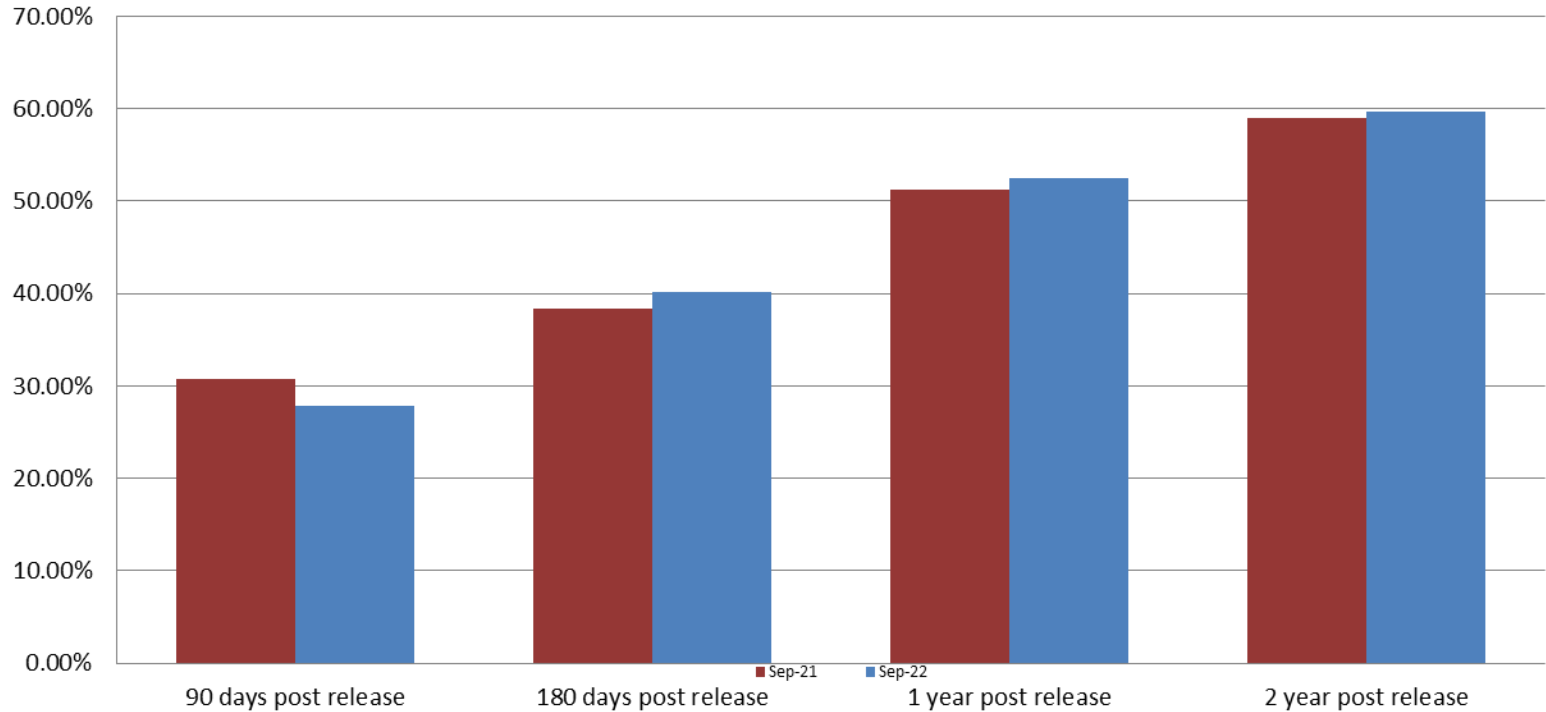


September 2020	September 2021	September 2022
1,563	1,495	1,473

Booking Admits & Total Monthly ADP (Jail): September 2020 - present



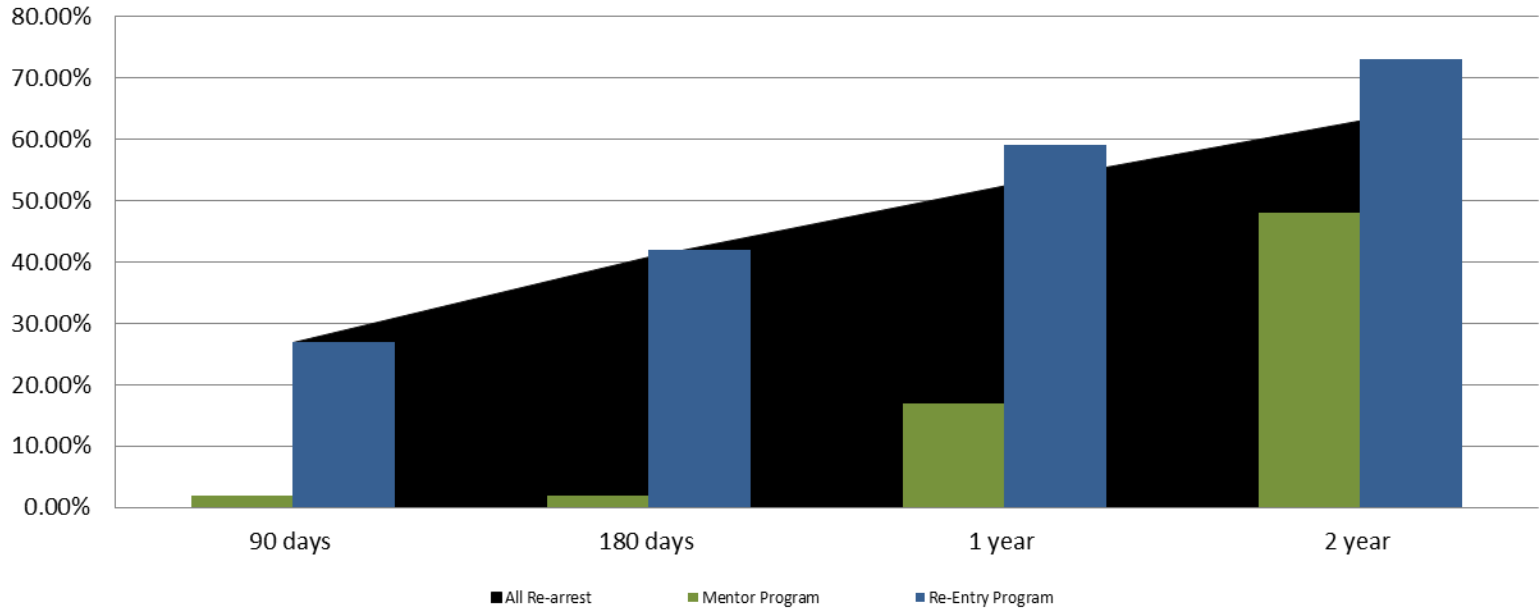
Percent of Released Inmates Rearrested September



Month Year	90 Days	180 Days	1 Year	2 Years
Sep. 2021	30.80%	38.30%	51.25%	59.04%
Sep. 2022	27.87%	40.16%	52.42%	59.69%



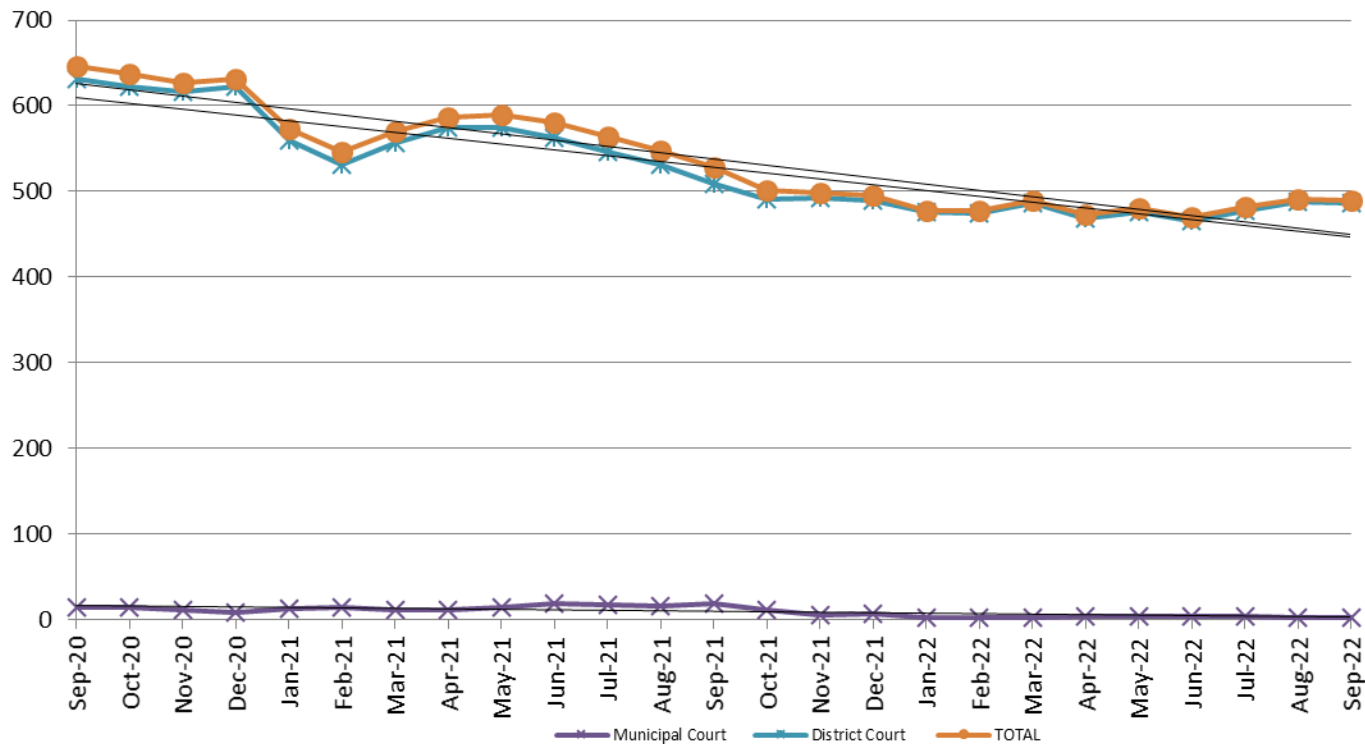
Recidivism by Programs September 2022



September 2022	90 Days	180 Days	1 year	2 years
All Re-arrests	25.02%	39.87%	55.89%	68.18%
Mentor Program	2%	2%	17%	48%
Re-Entry Program	27%	42%	59%	73%



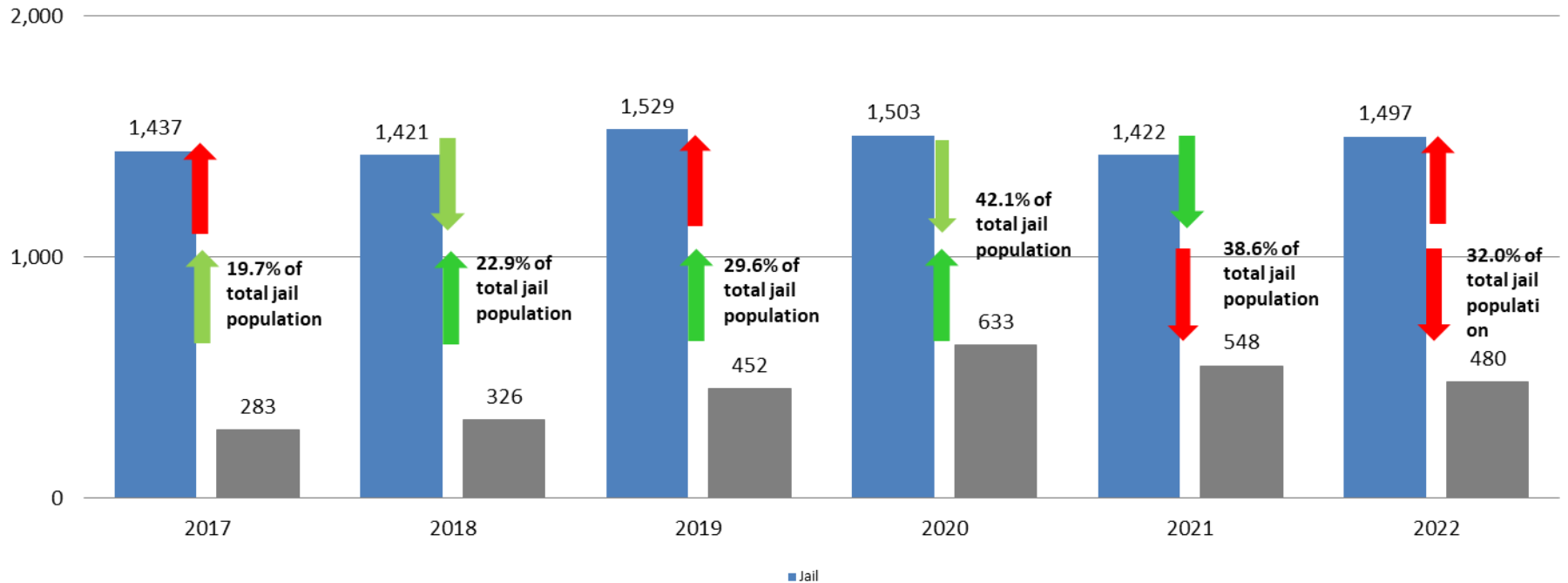
Pretrial Services Program (PSP) Monthly ADP: September 2020 - present



September	2020 ADP	2021 ADP	2022 ADP	2020 YTD Avg.	2021 YTD Avg.	2022 YTD Avg.
Muni. Court	15	19	3	6	15.3	3.3
Dist. Court	631	509	487	627	549.6	478.3
Total	646	528	490	633	565	481.5

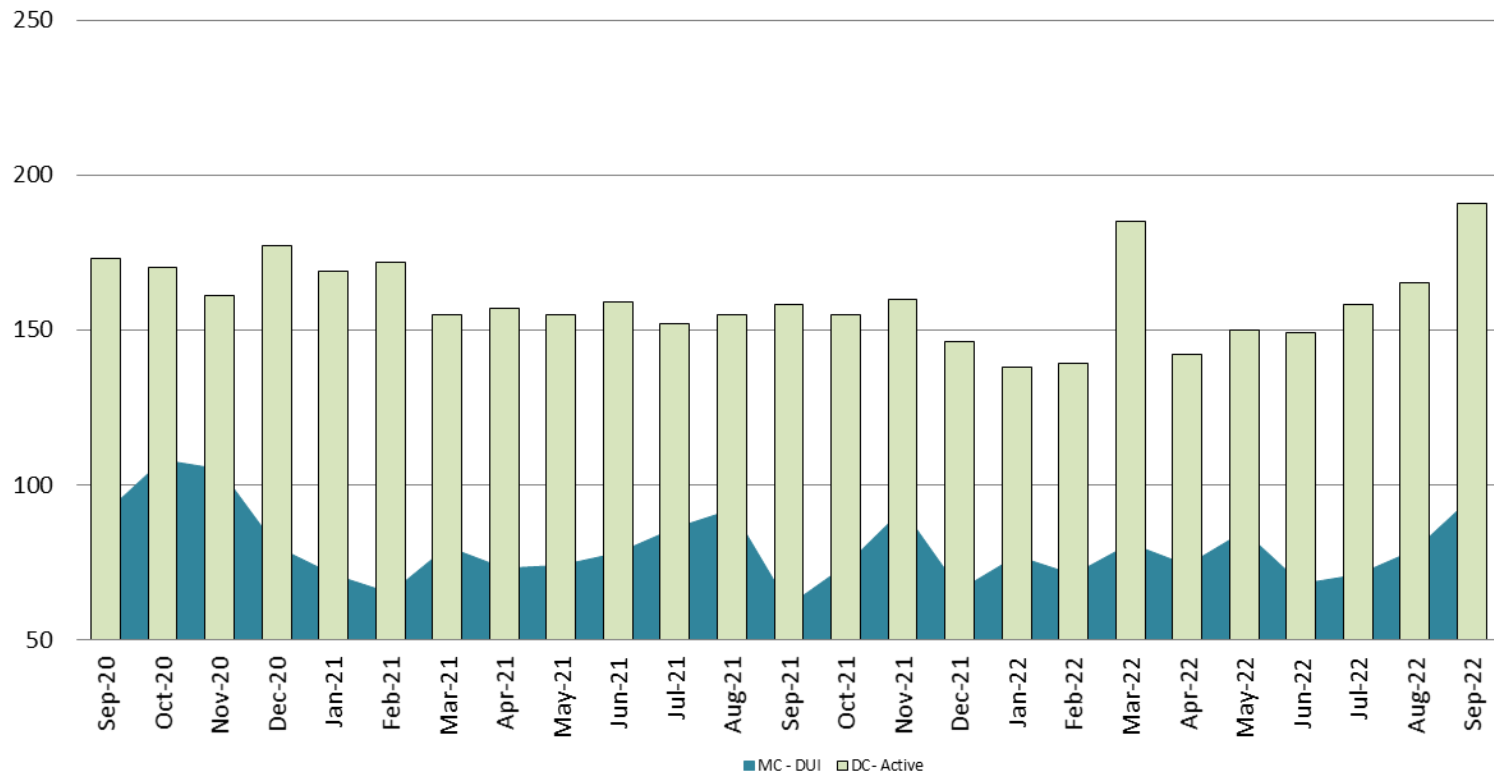
Correlation: Total & PSP

Total Annual ADP: 2017 - present



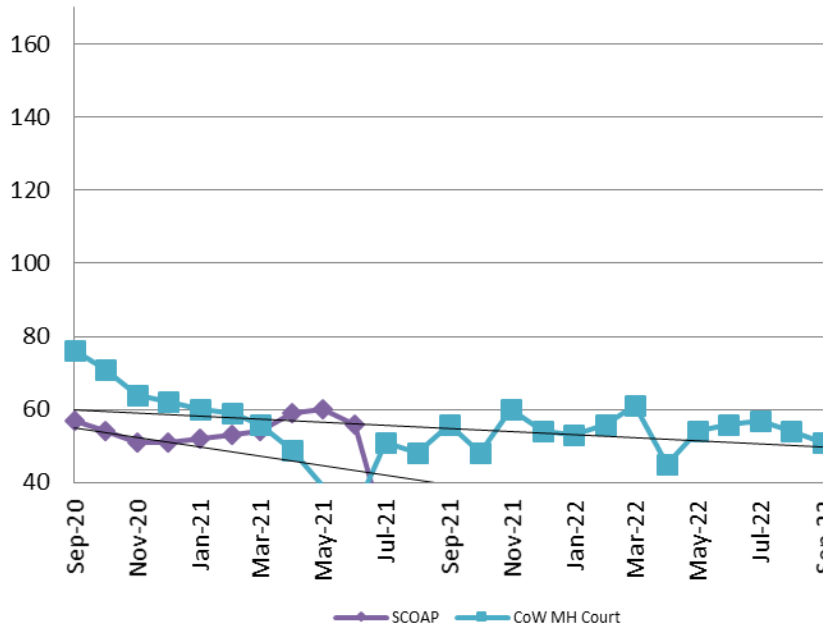
Diversion - Active Caseload

September 2020 - present

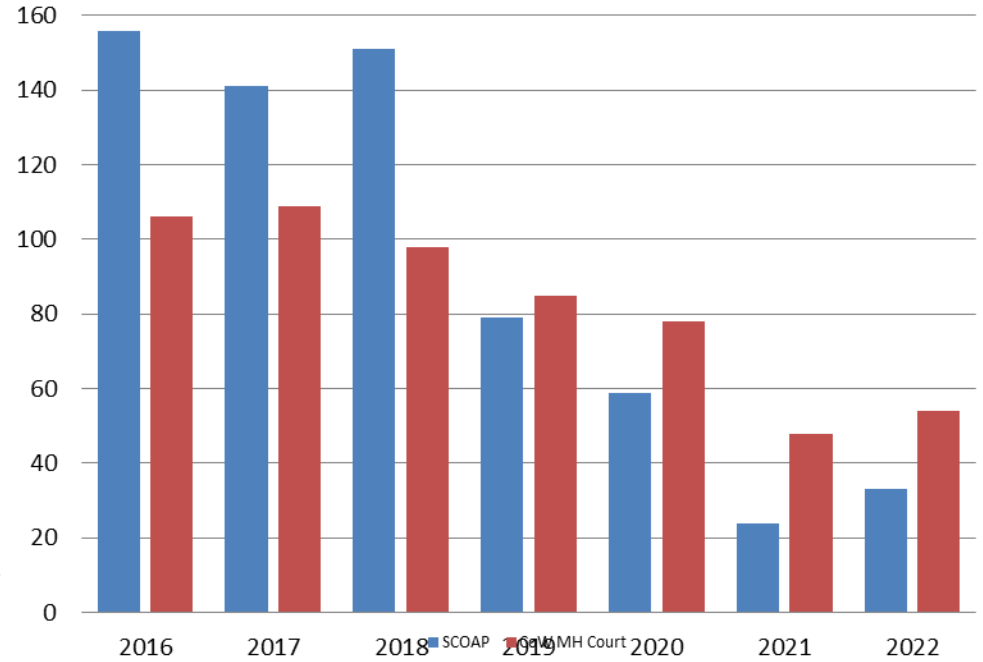


September	2020	2021	2022	2020 YTD Avg.	2021 YTD Avg.	2022 YTD Avg.
Muni. Court- DUI	91	61	96	94	76	78
Dist. Court- Active	173	158	191	178	159	160

Mental Health - ADP September 2020 - present

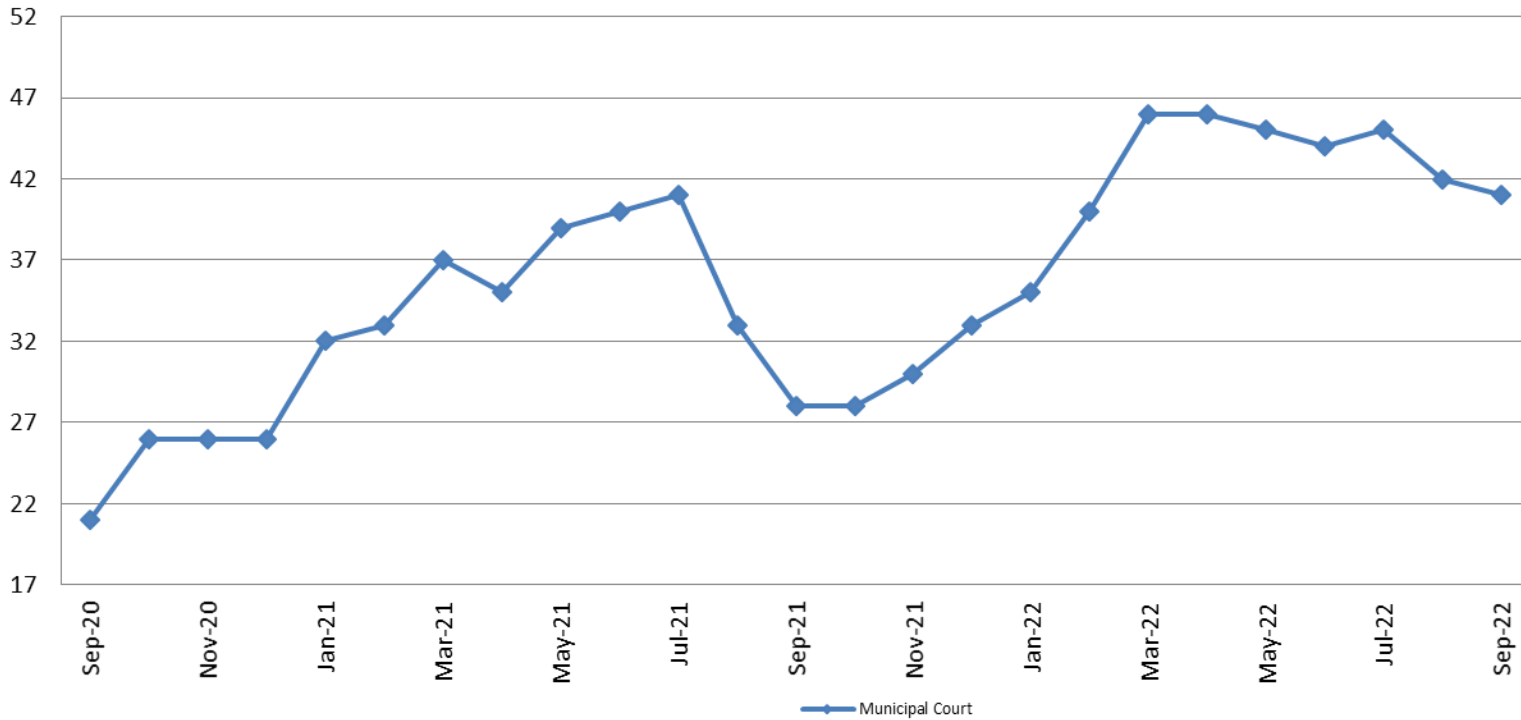


Mental Health ADP Year over Year - September



September	2020 ADP	2021 ADP	2022 ADP	2020 YTD Avg.	2021 YTD Avg.	2022 YTD Avg.
SCOAP	57	26	33	65	46	32
MH Court	76	56	50.8	76	50	54

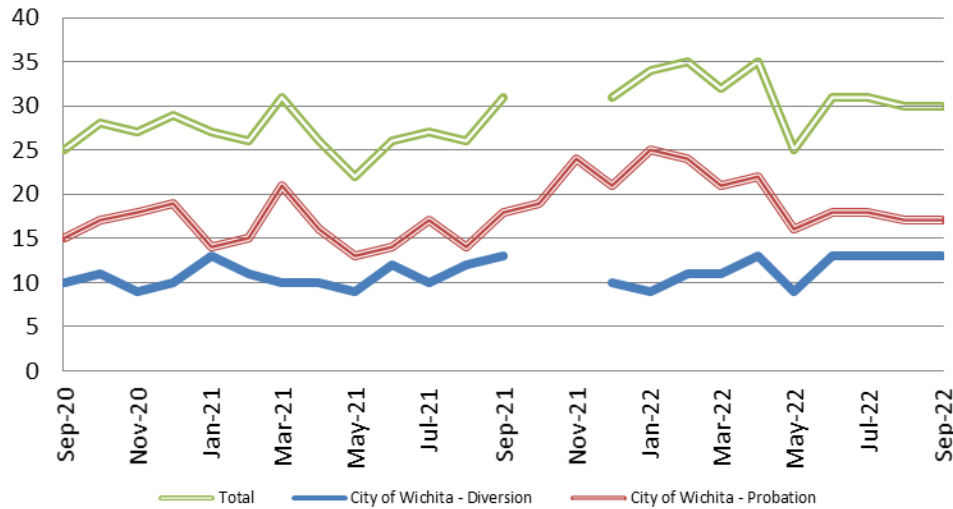
Day Reporting - Active Caseload September 2020 - present



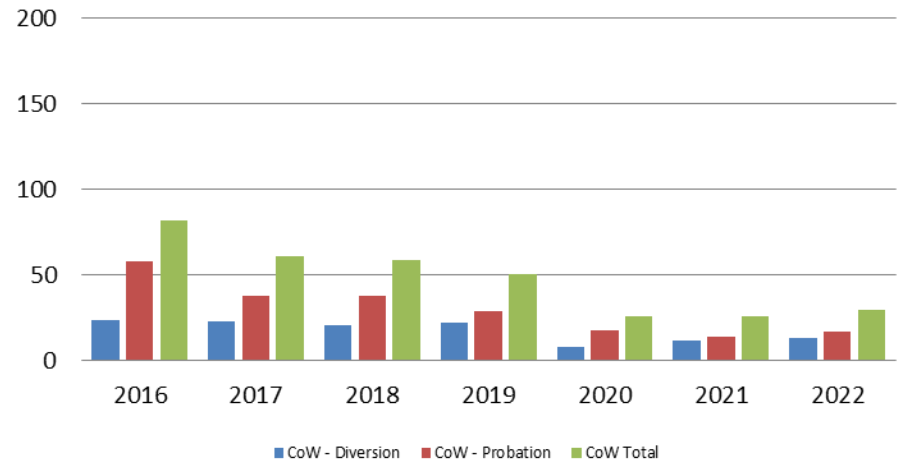
September	2017	2018	2019	2020	2021	2022
Muni. Court	39	31	32	21	28	41
Muni. Court YTD Avg.	36	35	30	21	35	44



Drug Court - City of Wichita ADP: September 2020 - present



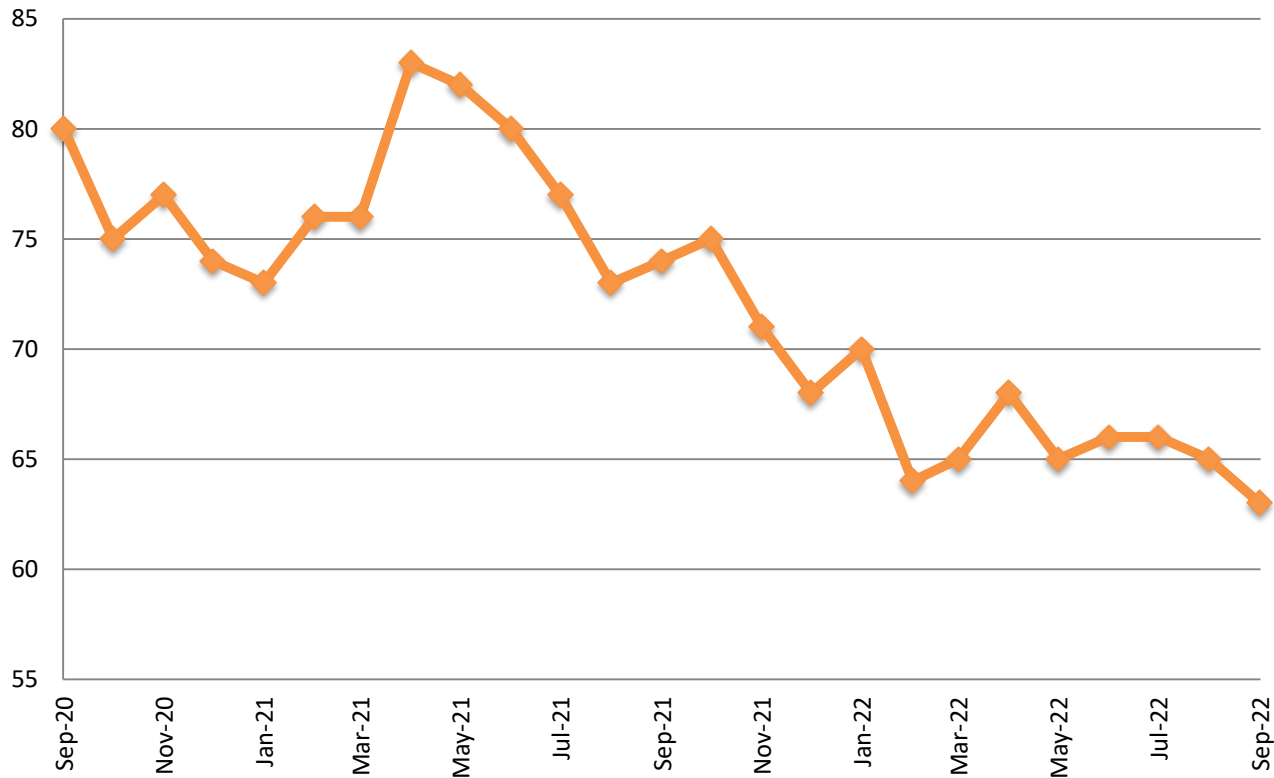
Drug Court- City of Wichita Year over Year - September



September	2020	2021	2022
Diversion	10	13	13
Probation	15	18	17
Total	25	31	30



Drug Court - Sedgwick County ADP: September 2020- present



September	2020	2021	2022
Sedg. Co. ADP	80	74	63
YTD Avg.	92	75	65



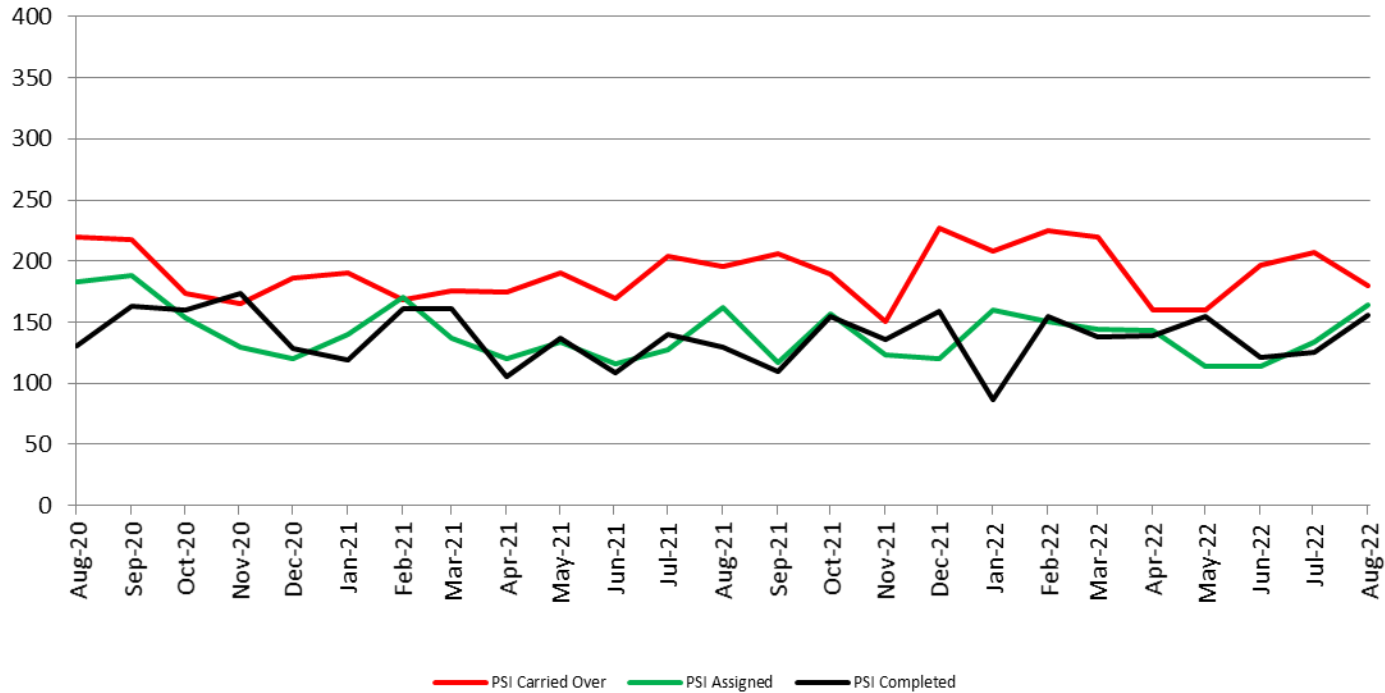
Probation - Active Caseloads September 2020 - present



September	2020	2021	2022	2020 YTD Avg.	2021 YTD Avg.	2022 YTD Avg.
Dist. Court Probation	1455	1770	1656	1609	1709	1658
Muni. Court Probation	870	1032	903	918	1066	1036



District Court Probation: Pre-Sentence Investigation September 2020 - present

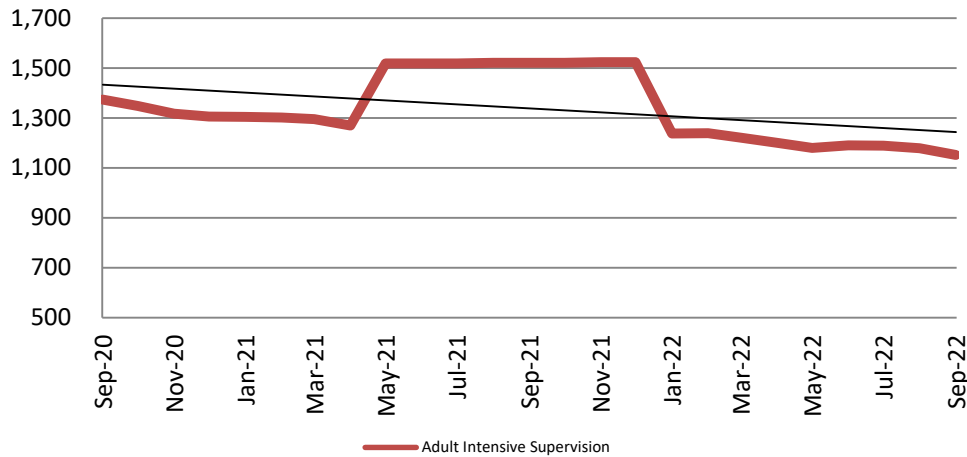


September	2020	2021	2022
Carried Over	197	204	207
Assigned	183	162	164
Completed	131	129	156



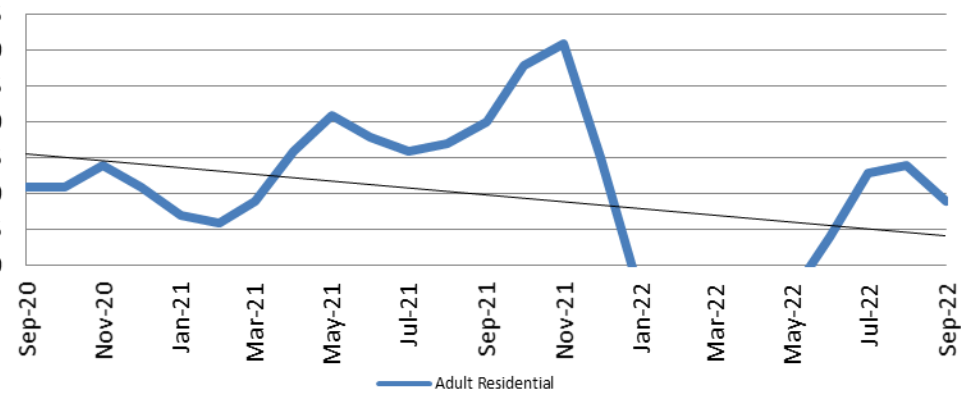
Community Corrections

**Adult Intensive Supervision Probation (AISP):
ADP September 2020 - present**



Year	September	September YTD Avg.
2020	1374	1463
2021	1,521	1,520
2022	1,151	1,198

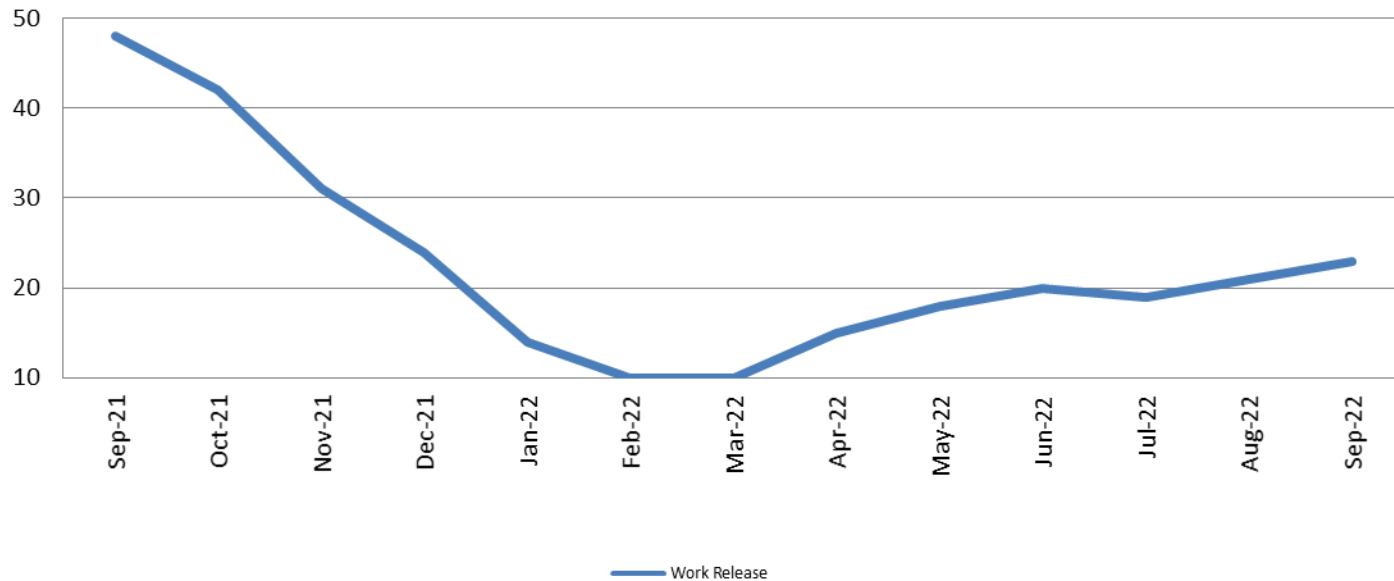
**Adult Residential: ADP
September 2020 - present**



Year	September	September YTD Avg.
2020	31	38
2021	40	34
2022	29	20

Community Corrections

Work Release: ADP September 2021 - present

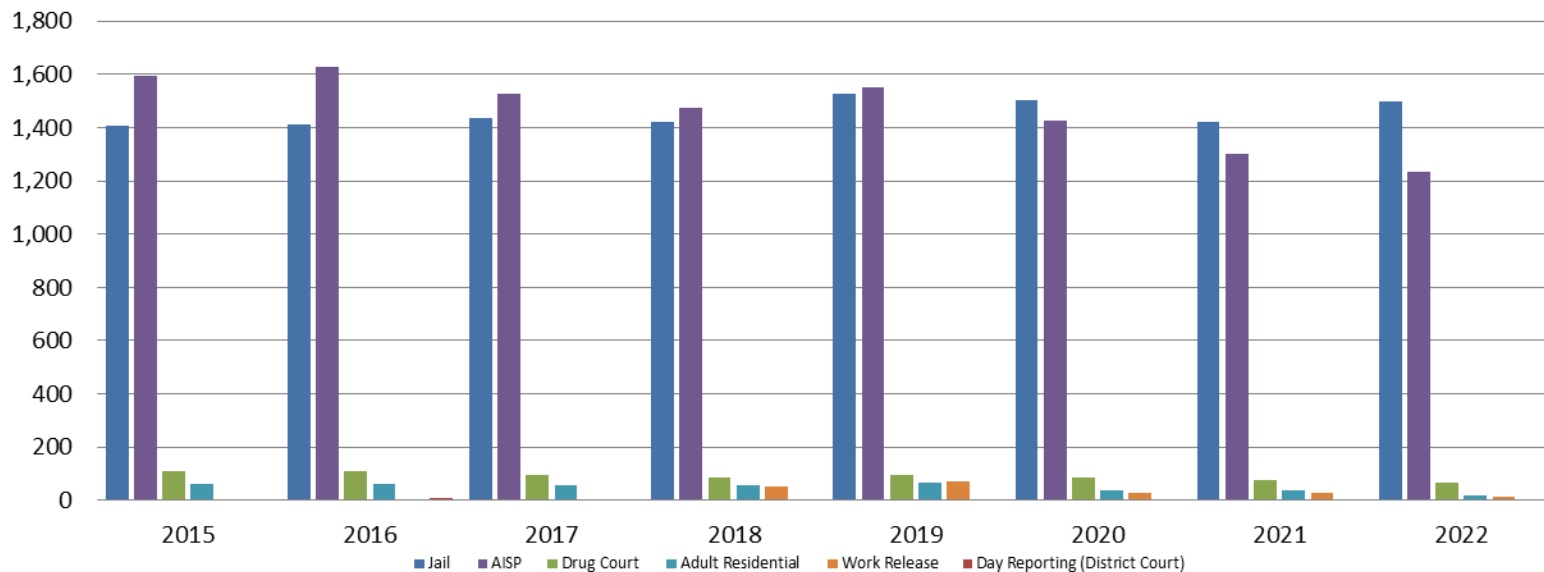


Month Year	Total	YTD Avg.
September 2021	48	29
September 2022	23	17



Correlation: Total & Sedgwick County Programs (Adult)

Total Annual ADP 2015 - present

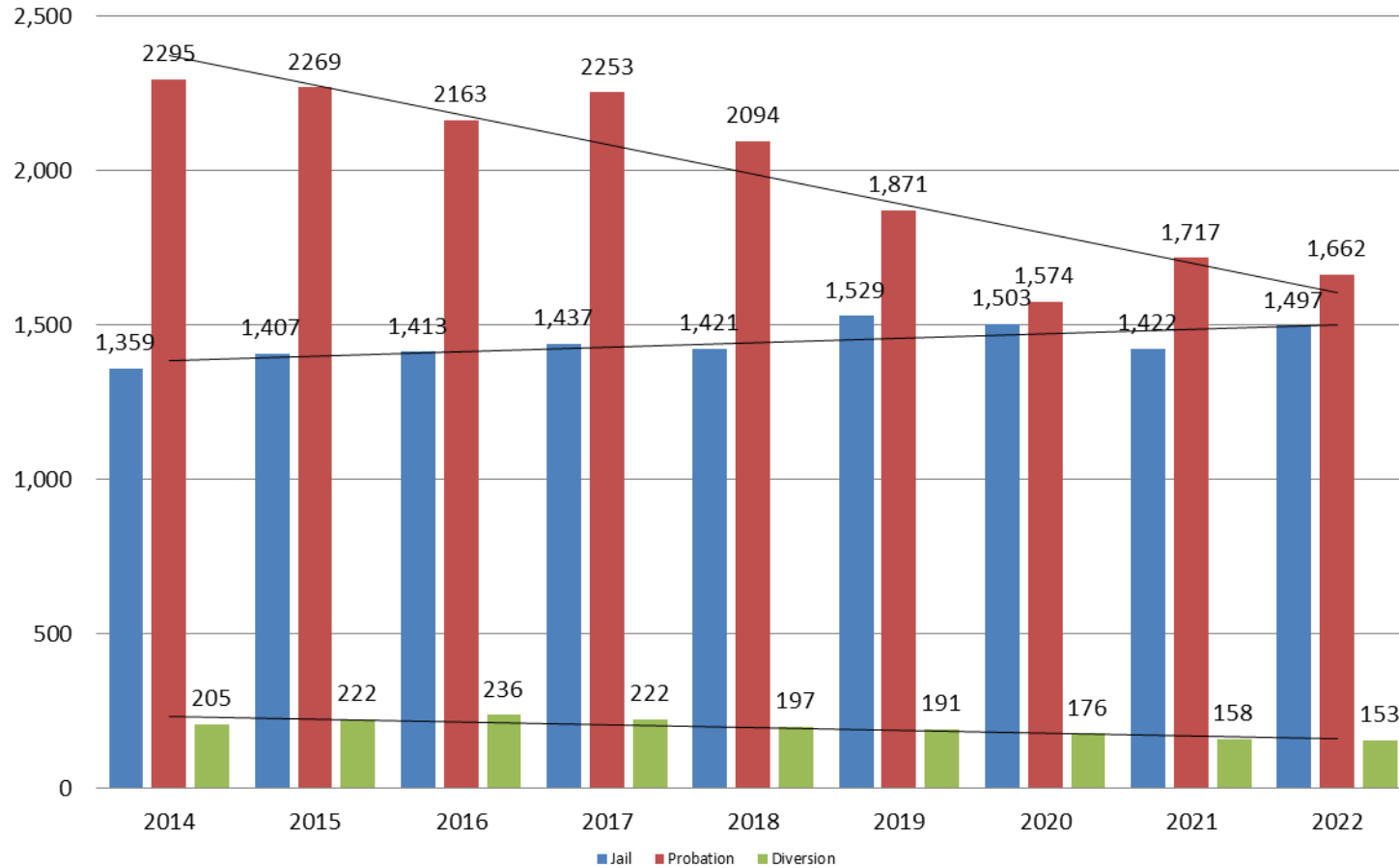


	2020	2021	2022
Jail	1,503	1,422	1,497
AISP	1,428	1,300	1,233
Drug Court	88	75	66
Adult Residential	36	37	19
Work Release	30	30	16
Day Reporting (DC)	0	0	0



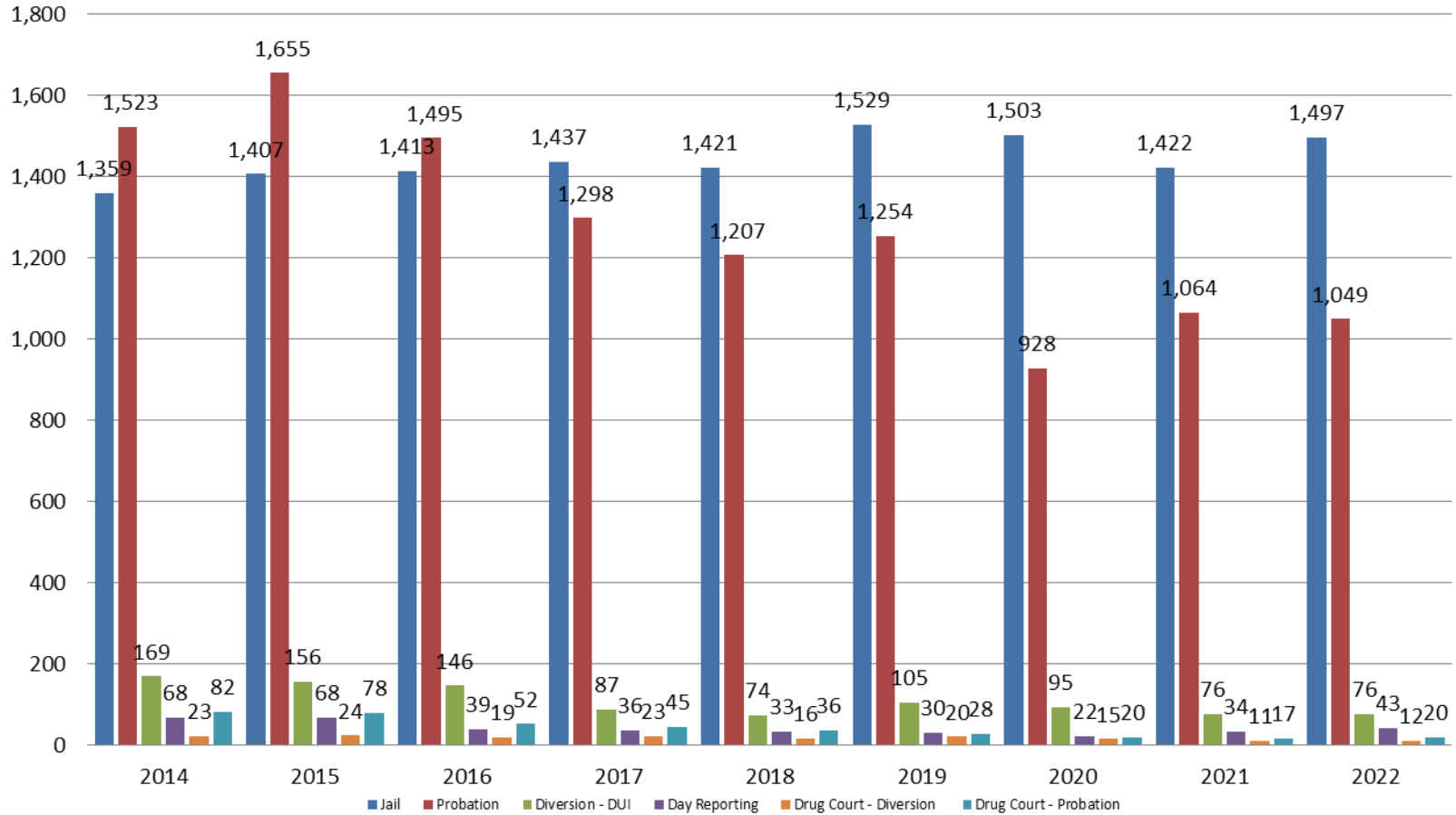
Correlation: Total & District Court Programs

Total Annual ADP: 2014 - present



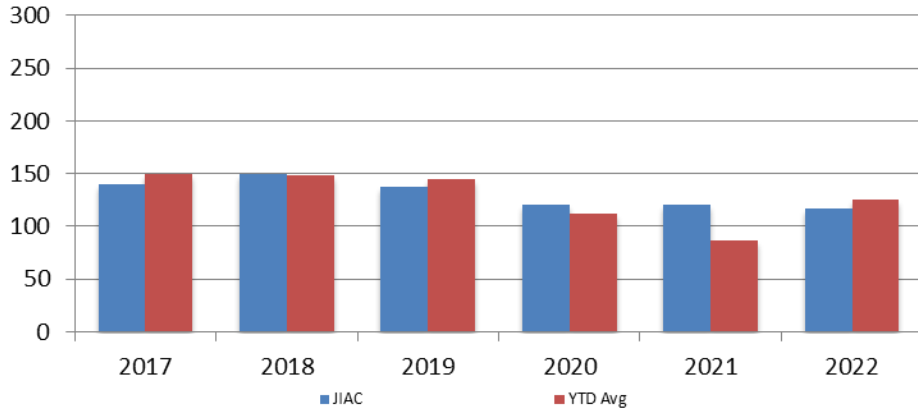
Correlation: Total & City of Wichita / Municipal Court Programs

Total Annual ADP: 2014 - present



Juvenile

JIAC Intakes
September 2017 - present

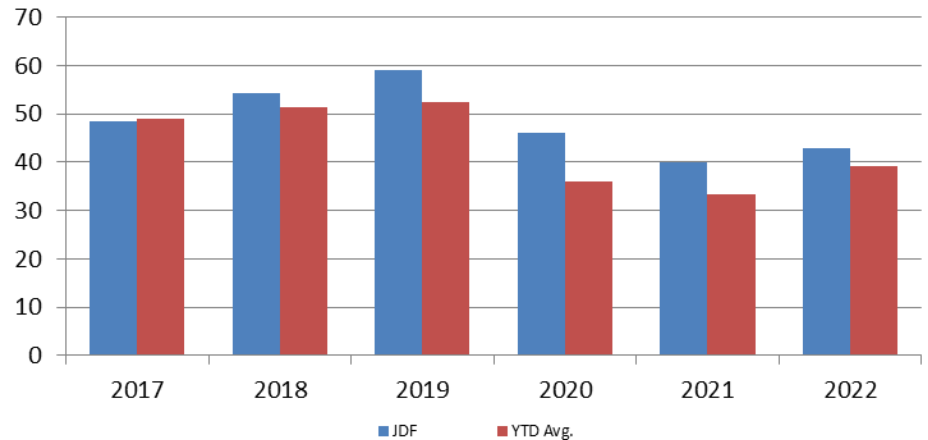


Year	September	September YTD Avg.
2017	161	151
2018	152	149
2019	127	143
2020	105	111
2021	132	92
2022	149	130

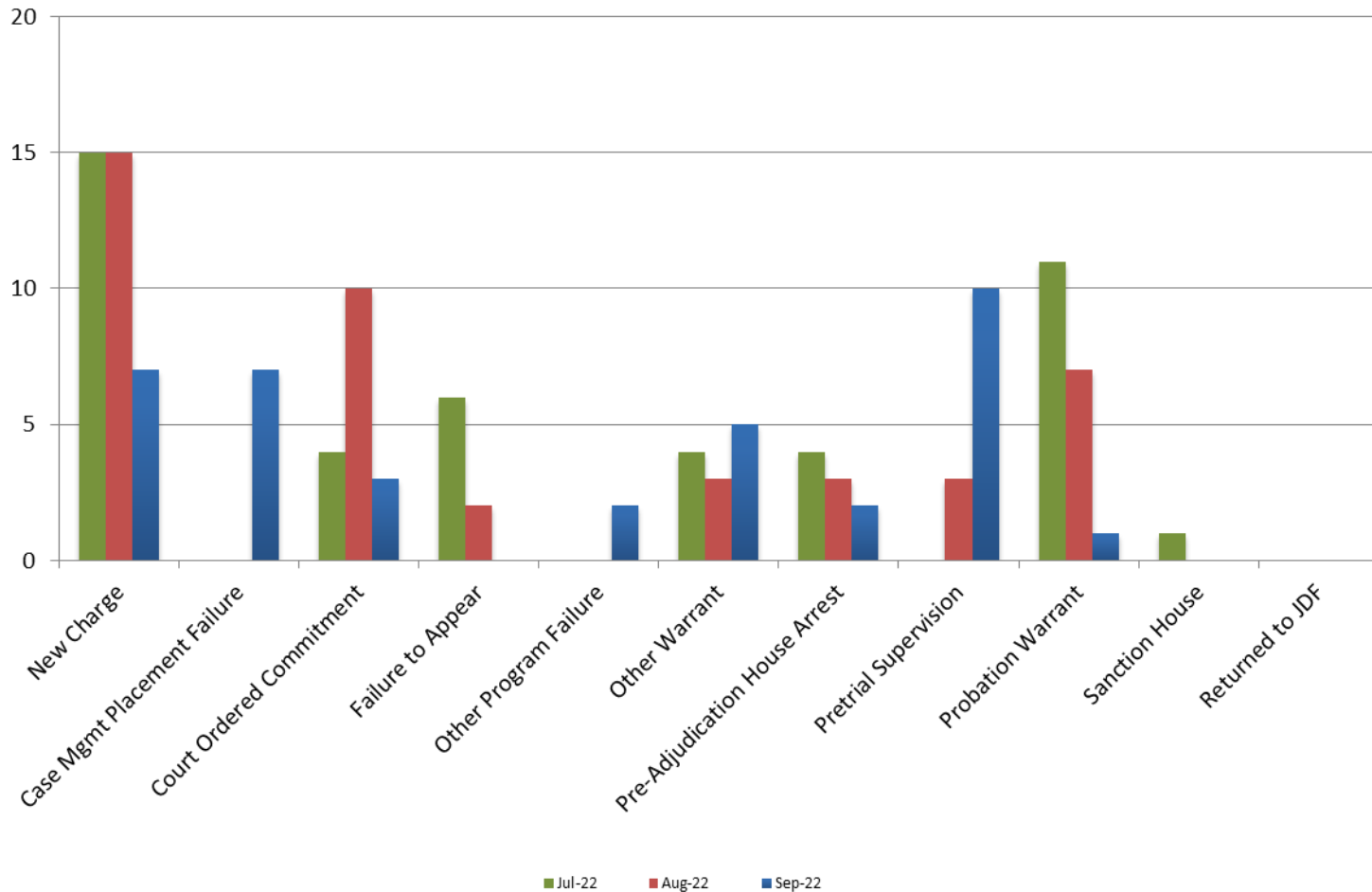
Year **September** **September YTD Avg.**

2017	56	50
2018	55	52
2019	49	52
2020	31	36
2021	40	34
2022	37	41

JDF ADP
September 2017 - present



Reason for JDF Admits



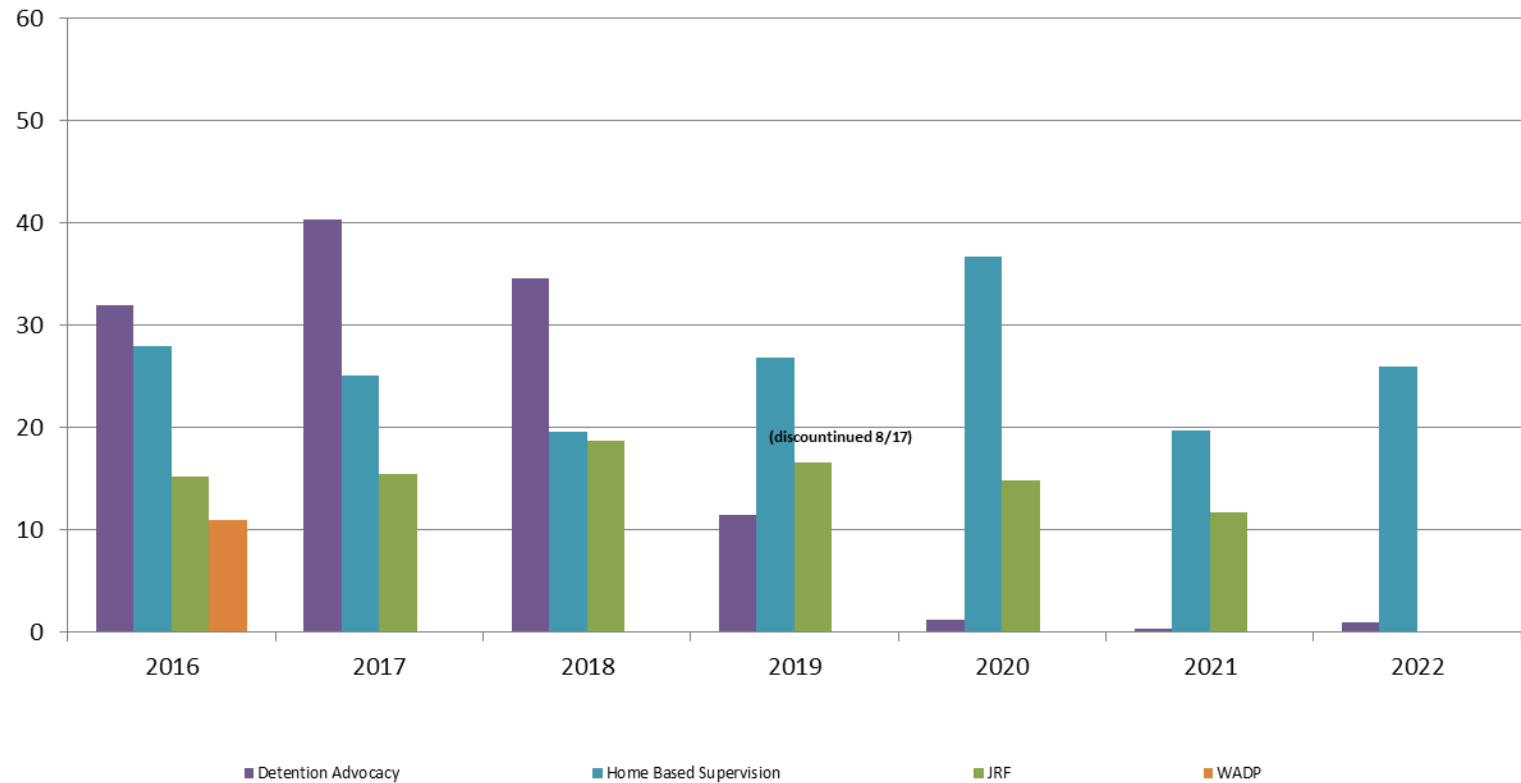
Reason for JDF Admits

Reason	September 2021	September 2022
New Charges	14	7
Case Management Placement Failures	0	7
Court Ordered Commitment	9	3
Failure to Appear	6	0
Other Program Failure	1	2
Other Warrant	0	5
Pre-Adjudication House Arrest	4	2
Pretrial Supervision	0	10
Probation Warrant	5	1
Sanction House	1	0
Returned to JDF	N/A	N/A



Juvenile Detention Alternatives

ADP: September 2016 - present



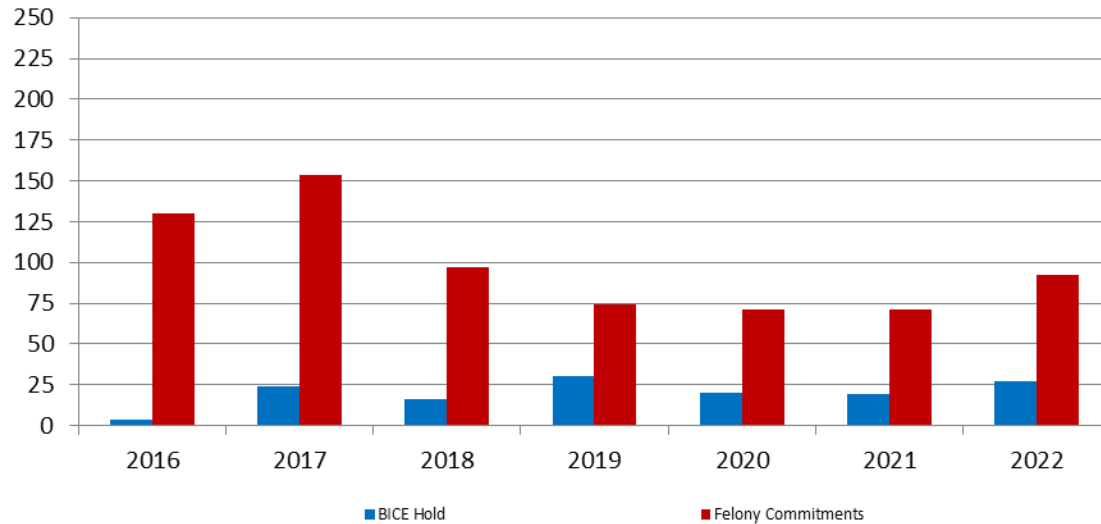
Juvenile Detention Services

September ADP	2019	2020	2021	2022
Juvenile Detention Facility	49	31	40	37
Juvenile Residential Facility	16	16	11	49
Home Based Supervision	23	29	22	31
Detention Advocacy Case Management Services	13	2	2	1
Weekend Alternative Detention Program (total)	N/A	N/A	N/A	N/A

September YTD AVERAGE	2019	2020	2021	2022
Juvenile Detention Facility	52	36	34	41
Juvenile Residential Facility	15	17	11	9
Home Based Supervision	28	30	23	21
Detention Advocacy Case Management Services	21	10	3	1
Weekend Alternative Detention Program	N/A	N/A	N/A	N/A

Monthly Jail Snapshot: September

Snapshots September 2016 - present

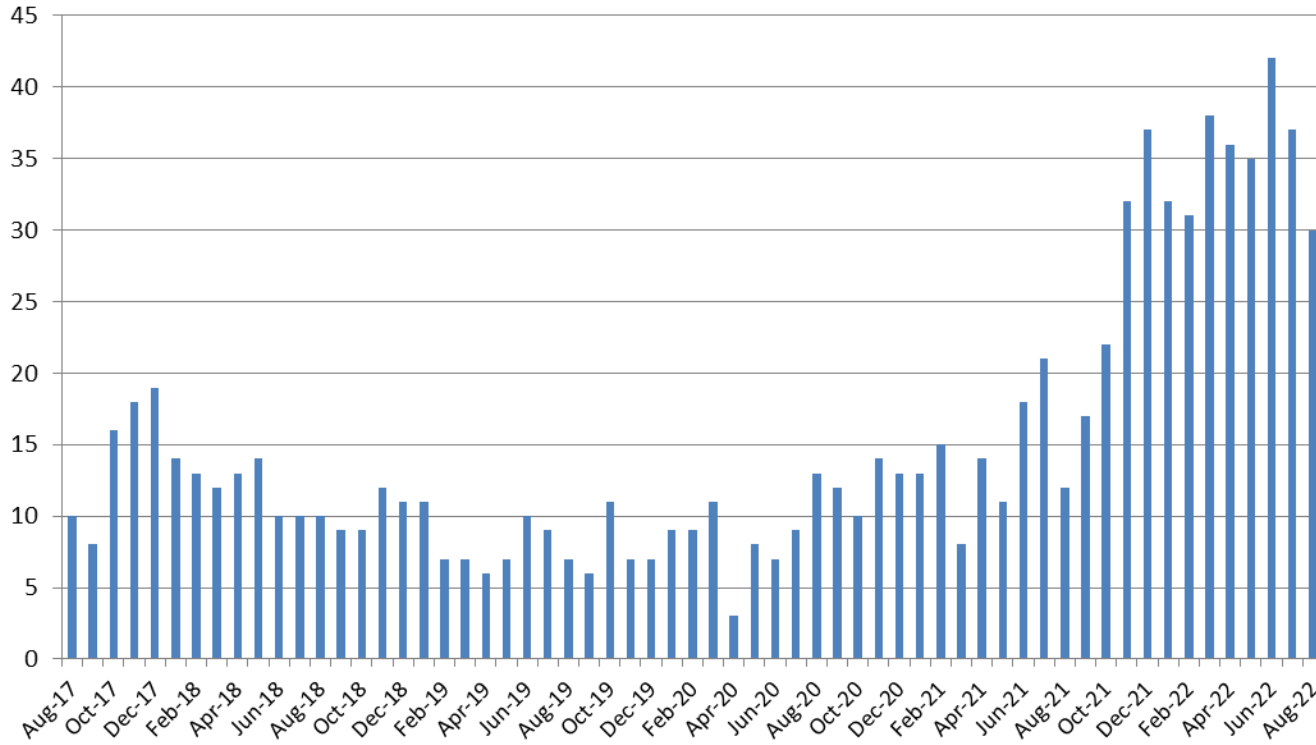


BICE Hold	2016	2017	2018	2019	2020	2021	2022
September	4	22	18	29	20	24	22

Felony Commitments	2016	2017	2018	2019	2020	2021	2022
September	128	145	85	68	96	72	96



Journal Entry Completion (Average Days) August 2017 - present*



August	2017	2018	2019	2020	2021	2022
Avg. Days	10	10	7	13	12	30
YTD Avg.	9	12	8	9	14	36

