

# Public Services Community Programs

**Mission:** Public Services Community Programs' mission is to promote health and wellness, independence, and improved functioning for individuals served.

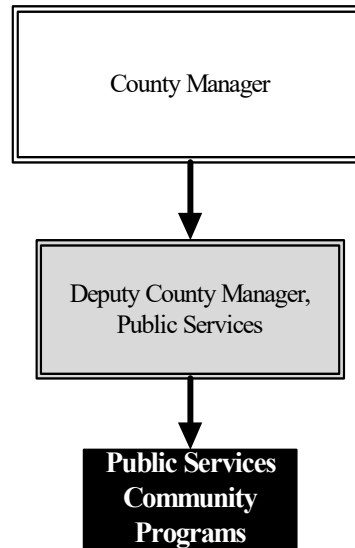
**Timothy V. Kaufman**  
Deputy County Manager

100 N. Broadway, Suite 630  
Wichita, KS 67202  
316.660.7674  
[tim.kaufman@sedgwick.gov](mailto:tim.kaufman@sedgwick.gov)

## Overview

Public Services Community Programs is involved in a number of initiatives across the County and represents the County in the community with other social service providers.

Sedgwick County provides funding to the Child Advocacy Center (CAC) of Sedgwick County. The CAC connects resources and services together under one roof to more efficiently and effectively serve children and families who have experienced abuse. Primary stakeholders include the Exploited and Missing Child Unit (EMCU), which is a three-way partnership between the Kansas Department for Children and Families (DCF), Wichita Police Department (WPD), and the Sedgwick County Sheriff's Office. Multiple other community partners also collaborate with the CAC for services provided to children and families following abuse.



## Strategic Goals:

- Support the Child Advocacy Center in its efforts to lead the community in eliminating the suffering of abused children

## Highlights

Community Programs Allocations			
	2022 Actual	2023 Revised	2024 Budget
Child Advocacy Center	\$205,000	\$205,000	\$218,000
Miscellaneous	-	\$33,000	\$33,000
<b>Total</b>	<b>\$205,000</b>	<b>\$238,000</b>	<b>\$251,000</b>



# Accomplishments and Strategic Results

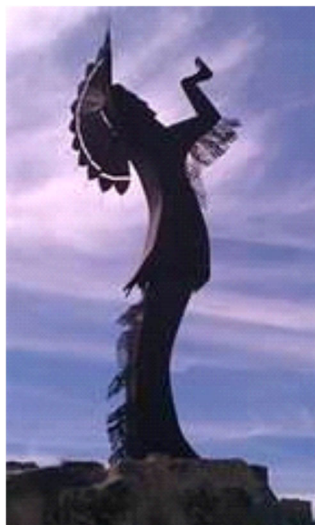
## Accomplishments

One hundred percent of the clients seen by child family advocates are offered additional services for a variety of needs, including but not limited to therapy, basic needs, financial assistance, medical assistance, filing for a Protection From Abuse (PFA) order, and completing an application for Crime Victims Compensation. The CAC is staffed with a Multi-Disciplinary Team made up of employees from a variety of support agencies including EMCU, DCF, WPD, and the Sheriff's Office, as well as social service agencies, prosecution, other non-profit agencies, and health care providers. These dedicated professionals serve children and families in their time of greatest need.

## Strategic Results

Public Services Community Programs continues to recognize the important role that nonprofits play in the delivery of County services and the desire to ensure the availability of strong and effective partners. The CAC is an example of leveraging partnerships with community stakeholders so that the needs of those requiring assistance related to public health, behavioral health, disabilities, aging, homelessness, and housing are addressed.

In 2022, the CAC was responsible for serving a total of 1,701 abused or neglected children (an increase of 75 children from 2021) and 1,286 non-offending caregivers. Additionally, the CAC met all eight measured outcomes through the contract monitoring process, including measures related to mental health services referrals and referrals for additional appropriate services.

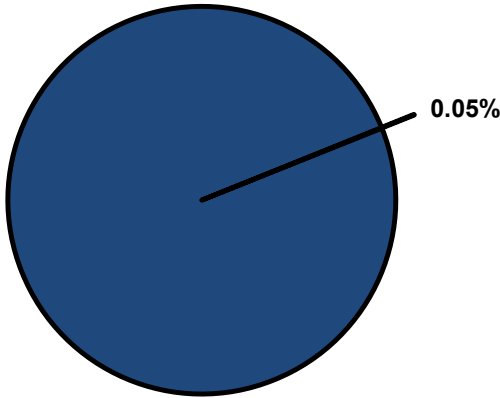


## Significant Budget Adjustments

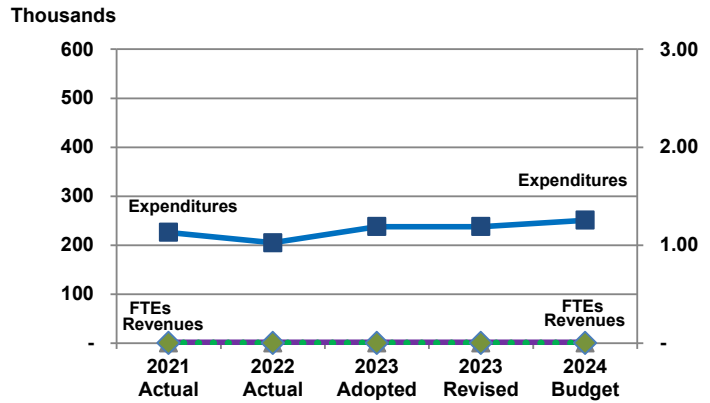
Significant adjustments to the Public Services Community Program's 2024 budget include a \$13,000 increase in contractals to match contributions made to the CAC by other entities.

**Departmental Graphical Summary**

**Public Services Community Programs**  
Percent of Total County Operating Budget



**Expenditures, Program Revenue & FTEs**  
All Operating Funds



**Budget Summary by Category**

	2021 Actual	2022 Actual	2023 Adopted	2023 Revised	2024 Budget	Amount Chg '23 Rev.-'24	% Chg '23 Rev.-'24
<b>Expenditures</b>							
Personnel	-	-	-	-	-	-	-
Contractual Services	205,000	205,000	238,000	238,000	251,000	13,000	5.46%
Debt Service	-	-	-	-	-	-	-
Commodities	-	-	-	-	-	-	-
Capital Improvements	-	-	-	-	-	-	-
Capital Equipment	-	-	-	-	-	-	-
Interfund Transfers	21,179	-	-	-	-	-	-
<b>Total Expenditures</b>	<b>226,179</b>	<b>205,000</b>	<b>238,000</b>	<b>238,000</b>	<b>251,000</b>	<b>13,000</b>	<b>5.46%</b>
<b>Revenues</b>							
Tax Revenues	-	-	-	-	-	-	-
Licenses and Permits	-	-	-	-	-	-	-
Intergovernmental	-	-	-	-	-	-	-
Charges for Services	-	-	-	-	-	-	-
All Other Revenue	-	-	-	-	-	-	-
<b>Total Revenues</b>	<b>-</b>	<b>-</b>	<b>-</b>	<b>-</b>	<b>-</b>	<b>-</b>	<b>-</b>
<b>Full-Time Equivalentents (FTEs)</b>							
Property Tax Funded	-	-	-	-	-	-	-
Non-Property Tax Funded	-	-	-	-	-	-	-
<b>Total FTEs</b>	<b>-</b>	<b>-</b>	<b>-</b>	<b>-</b>	<b>-</b>	<b>-</b>	<b>-</b>

**Budget Summary by Fund**

Fund	2021 Actual	2022 Actual	2023 Adopted	2023 Revised	2024 Budget	Amount Chg '23 Rev.-'24	% Chg '23 Rev.-'24
COMCARE	205,000	-	-	-	-	-	-
General Fund	-	205,000	238,000	238,000	251,000	13,000	5.46%
COMCARE Grants	21,179	-	-	-	-	-	-
<b>Total Expenditures</b>	<b>226,179</b>	<b>205,000</b>	<b>238,000</b>	<b>238,000</b>	<b>251,000</b>	<b>13,000</b>	<b>5.46%</b>

**Significant Budget Adjustments from Prior Year Revised Budget**

	Expenditures	Revenues	FTEs
Increase in expenditures to match contributions made to the Child Advocacy Center by other entities	13,000		
<b>Total</b>	<b>13,000</b>	<b>-</b>	<b>-</b>

**Budget Summary by Program**

Program	Fund	2021 Actual	2022 Actual	2023 Adopted	2023 Revised	2024 Budget	% Chg '23 Rev.-'24	2024 FTEs
Community Programs	Multi.	21,179	-	33,000	33,000	33,000	0.00%	-
Child Advocacy Center	Multi.	205,000	205,000	205,000	205,000	218,000	6.34%	-
<b>Total</b>		<b>226,179</b>	<b>205,000</b>	<b>238,000</b>	<b>238,000</b>	<b>251,000</b>	<b>5.46%</b>	<b>-</b>

**• Community Programs**

Budget was established in 2023 and 2024 for limited-time funding for the Mental Health and Substance Abuse Coalition.

**Fund(s): Comcare - Grants 252 / County General Fund 110**

Expenditures	2021 Actual	2022 Actual	2023 Adopted	2023 Revised	2024 Budget	Amnt. Chg. '23 - '24	% Chg. '23 - '24
Personnel	-	-	-	-	-	-	0.0%
Contractual Services	-	-	33,000	33,000	33,000	-	0.0%
Debt Service	-	-	-	-	-	-	0.0%
Commodities	-	-	-	-	-	-	0.0%
Capital Improvements	-	-	-	-	-	-	0.0%
Capital Equipment	-	-	-	-	-	-	0.0%
Interfund Transfers	21,179	-	-	-	-	-	0.0%
<b>Total Expenditures</b>	<b>21,179</b>	<b>-</b>	<b>33,000</b>	<b>33,000</b>	<b>33,000</b>	<b>-</b>	<b>0.0%</b>
<b>Revenues</b>							
Taxes	-	-	-	-	-	-	0.0%
Intergovernmental	-	-	-	-	-	-	0.0%
Charges For Service	-	-	-	-	-	-	0.0%
All Other Revenue	-	-	-	-	-	-	0.0%
<b>Total Revenues</b>	<b>-</b>	<b>-</b>	<b>-</b>	<b>-</b>	<b>-</b>	<b>-</b>	<b>0.0%</b>
<b>Full-Time Equivalents (FTEs)</b>	<b>-</b>	<b>-</b>	<b>-</b>	<b>-</b>	<b>-</b>	<b>-</b>	<b>0.0%</b>

**• Child Advocacy Center**

The Child Advocacy Center (CAC) of Sedgwick County was developed to coordinate resources and services under one roof to more efficiently and effectively serve children who have experienced abuse. Kansas Department for Children and Families (DCF), Wichita Police Department (WPD), and the Sedgwick County Sheriff's Office together formed the Exploited and Missing Child Unit (EMCU) in 1985. These stakeholders form a Multi-Disciplinary Team for handling child abuse cases. Services provided by these stakeholders include social work from DCF and investigations from the Sheriff's Office and the WPD. COMCARE provides referral options in assisting children and families with coping with the mental issues regarding these types of cases. All involved in the CAC and EMCU have been specially trained to mitigate trauma to child victims, protect the questioning of child victims from validity issues, and more importantly not expose child victims to the suspect.

**Fund(s): Comprehensive Community Care 202 / County General Fund 110**

Expenditures	2021 Actual	2022 Actual	2023 Adopted	2023 Revised	2024 Budget	Amnt. Chg. '23 - '24	% Chg. '23 - '24
Personnel	-	-	-	-	-	-	0.0%
Contractual Services	205,000	205,000	205,000	205,000	218,000	13,000	6.3%
Debt Service	-	-	-	-	-	-	0.0%
Commodities	-	-	-	-	-	-	0.0%
Capital Improvements	-	-	-	-	-	-	0.0%
Capital Equipment	-	-	-	-	-	-	0.0%
Interfund Transfers	-	-	-	-	-	-	0.0%
<b>Total Expenditures</b>	<b>205,000</b>	<b>205,000</b>	<b>205,000</b>	<b>205,000</b>	<b>218,000</b>	<b>13,000</b>	<b>6.3%</b>
<b>Revenues</b>							
Taxes	-	-	-	-	-	-	0.0%
Intergovernmental	-	-	-	-	-	-	0.0%
Charges For Service	-	-	-	-	-	-	0.0%
All Other Revenue	-	-	-	-	-	-	0.0%
<b>Total Revenues</b>	<b>-</b>	<b>-</b>	<b>-</b>	<b>-</b>	<b>-</b>	<b>-</b>	<b>0.0%</b>
<b>Full-Time Equivalents (FTEs)</b>	<b>-</b>	<b>-</b>	<b>-</b>	<b>-</b>	<b>-</b>	<b>-</b>	<b>0.0%</b>