

Criminal Justice Coordinating Council

Population Report & Program Trends

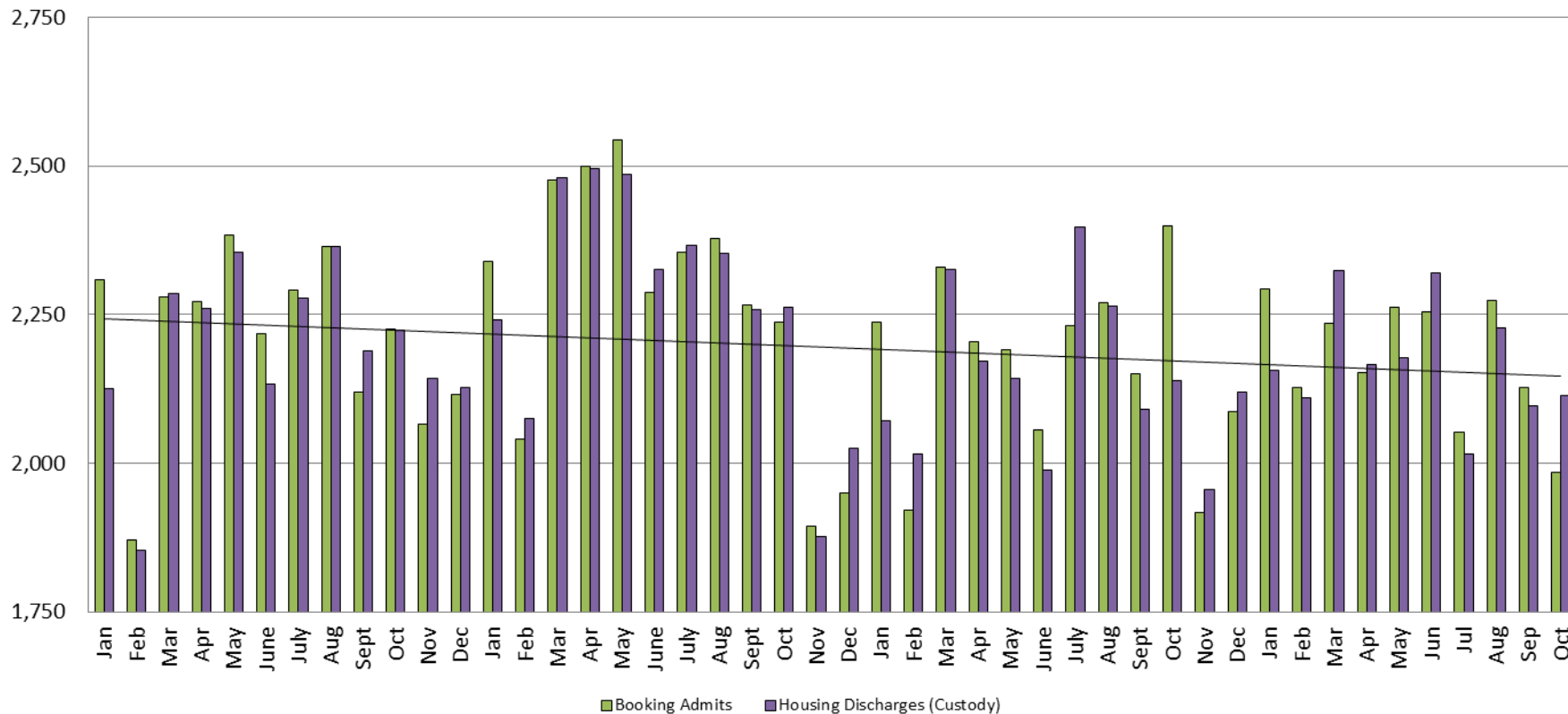
November 2016



Sedgwick County...
working for you

Detention Facility

Booking Admits & Housing Discharges from Custody January 2013 - Present



Housing Discharges for October

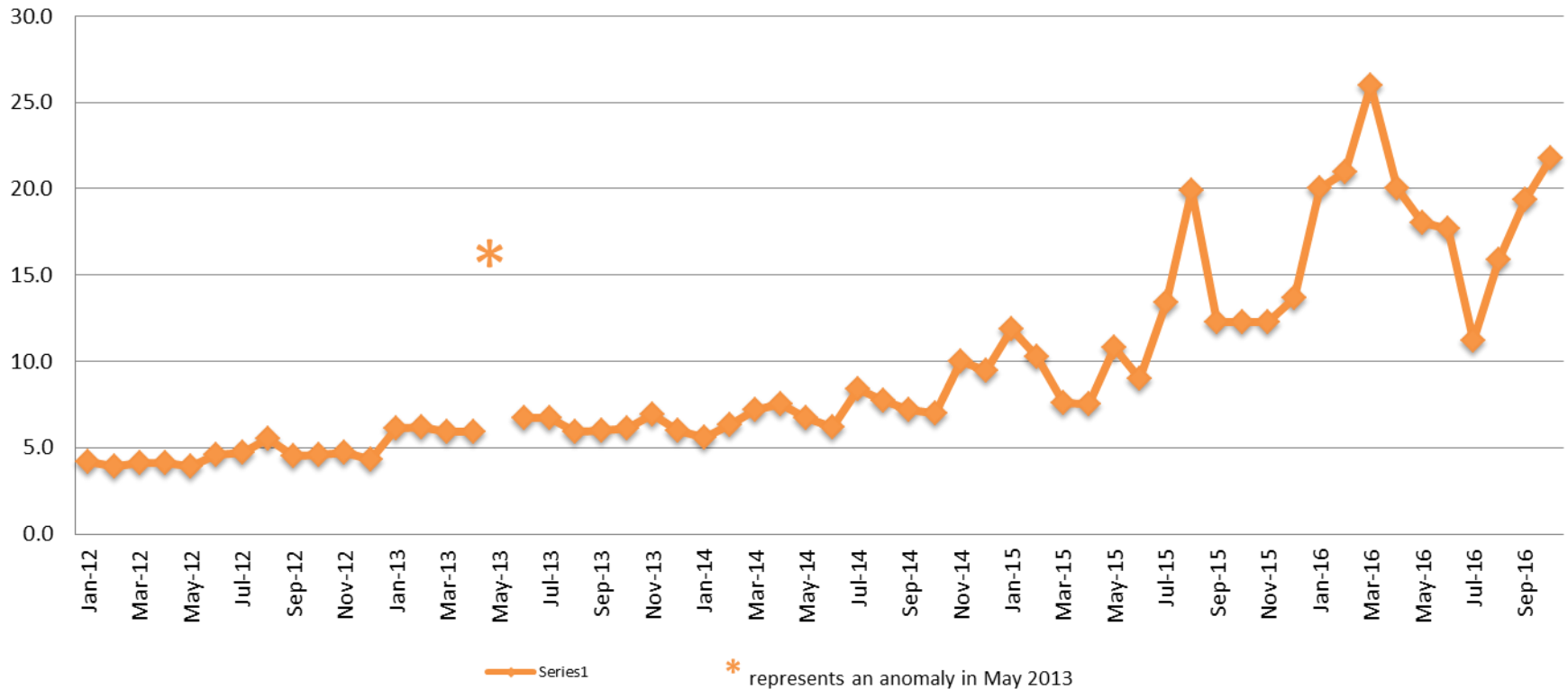
2014 = 2,263
 2015 = 2,139
 2016 = 2,113

Bookings for October

2014 = 2,238
 2015 = 2,399
 2016 = 1,985



Average Length of Stay: Booking (Hours) January 2012 - Present



October

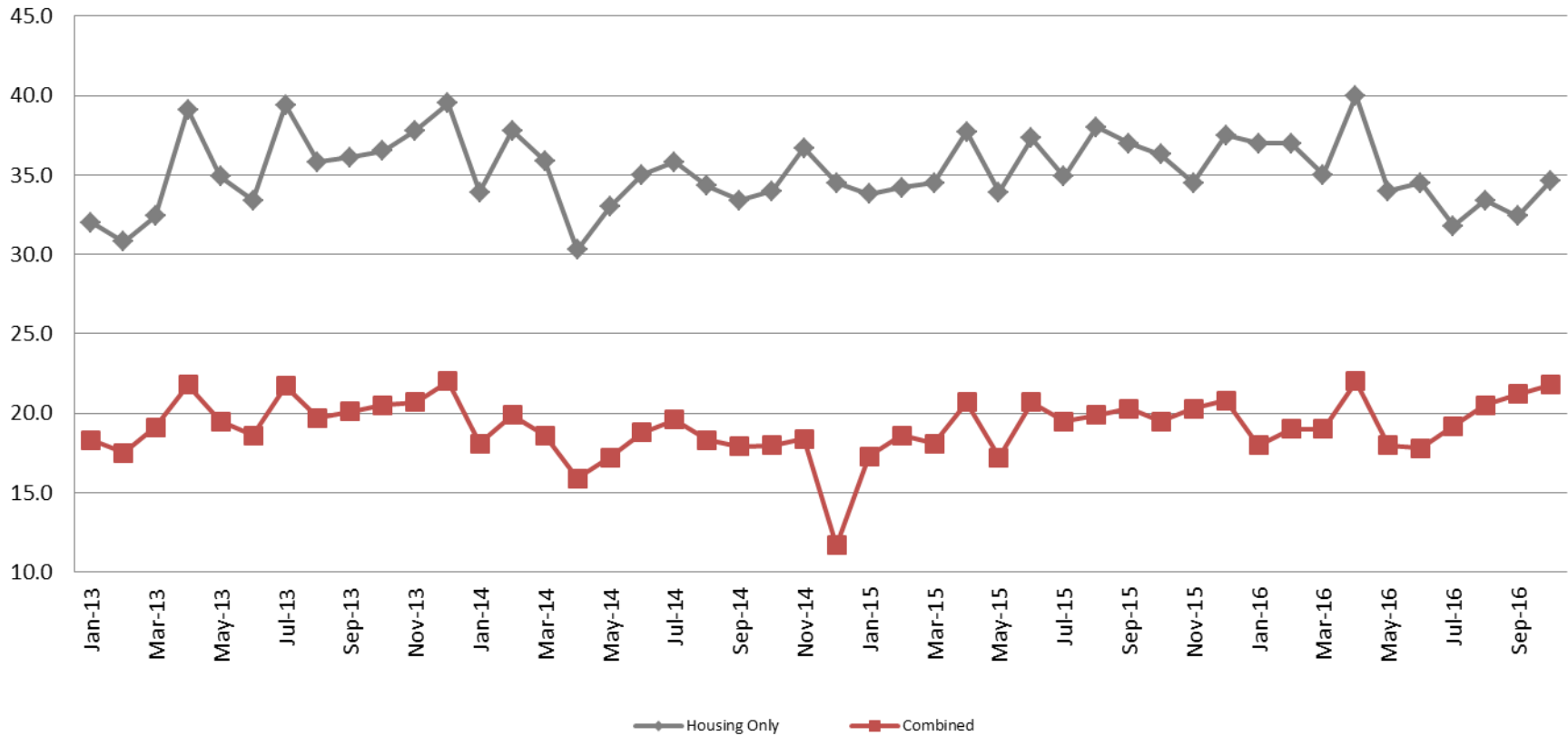
2012 = 4.6
 2013 = 6.1
 2014 = 7.0
 2015 = 12.3
 2016 = 21.8

October YTD Avg.

2012 = 4.4
 2013 = 7.2
 2014 = 7.0
 2015 = 11.5
 2016 = 19.1



Average Length of Stay: Housing & Combined (Days) January 2013 - Present



October Housing

2013 = 36.5
2014 = 34.0
2015 = 36.3
2016 = 34.6

October Housing YTD Avg.

2013 = 35.0
2014 = 34.3
2015 = 35.8
2016 = 35.0

October Combined

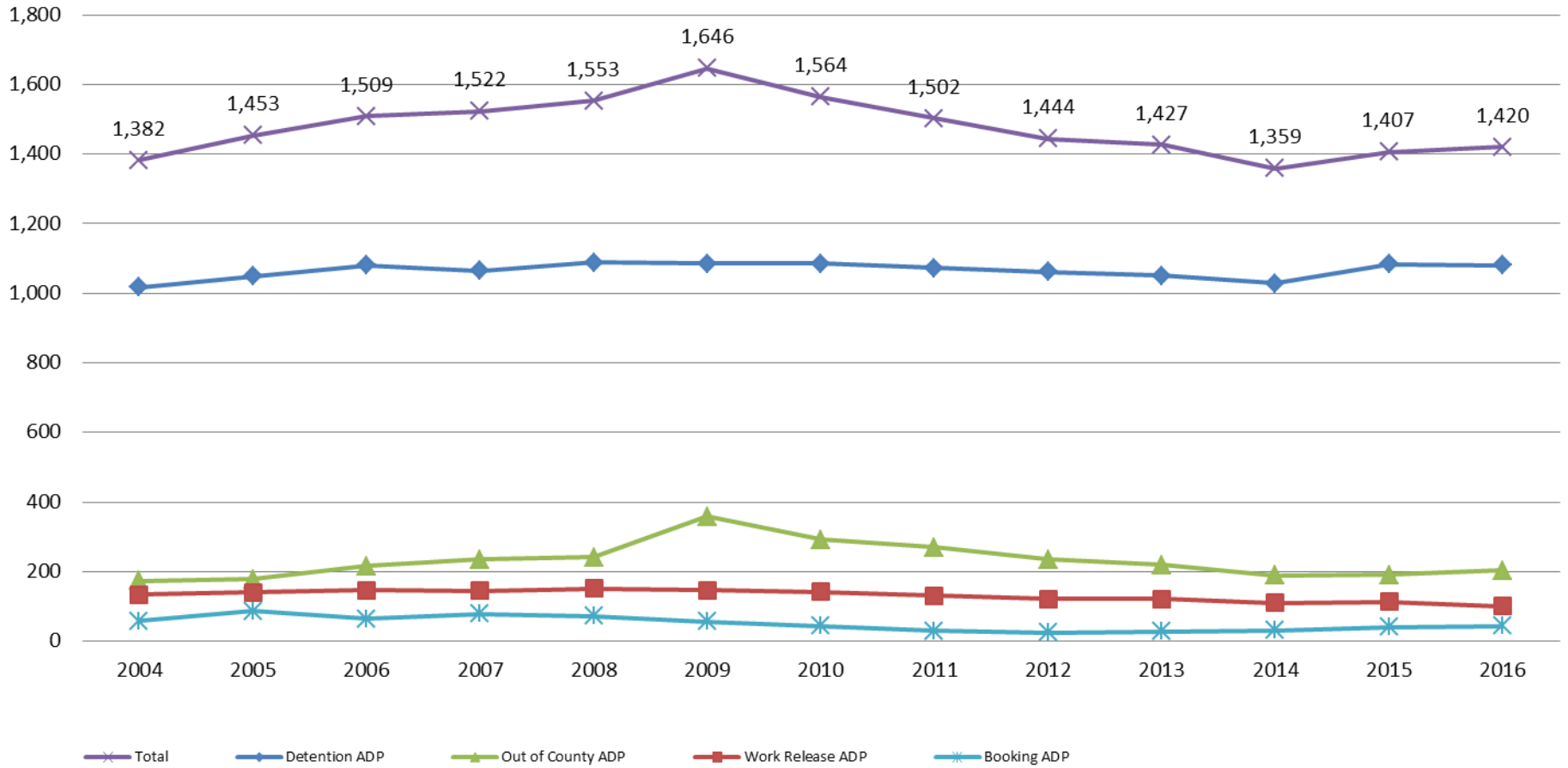
2013 = 20.5
2014 = 18.0
2015 = 19.5
2016 = 21.8

October Combined YTD Avg.

2013 = 19.7
2014 = 18.2
2015 = 19.2
2016 = 19.7

Jail: Annual Average Daily Population (ADP)

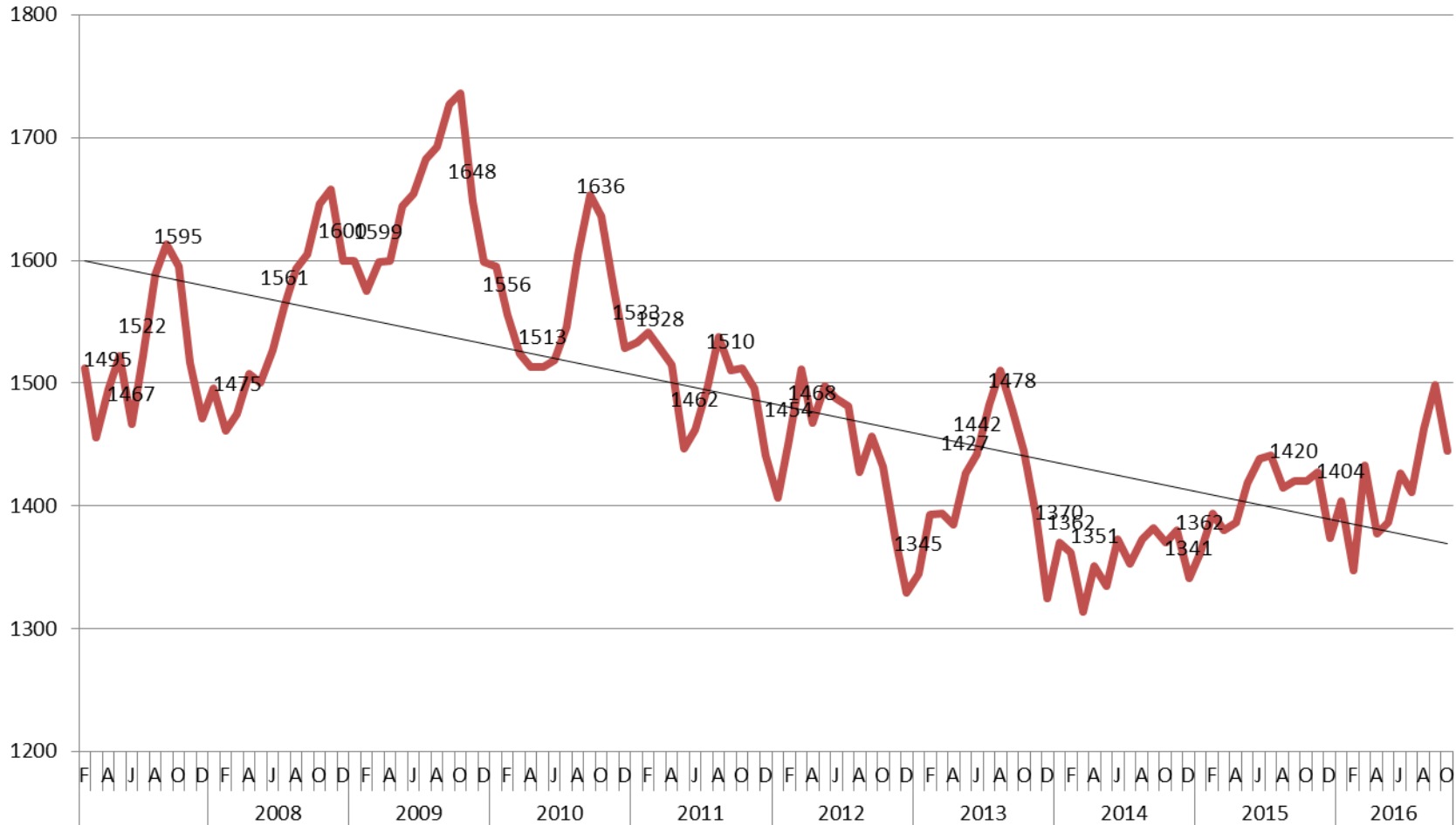
TRENDS: Booking, Detention, Work Release, & Out of County Annual ADP:
2004 - present



Sedgwick County...
working for you

(data obtained from detention facility)

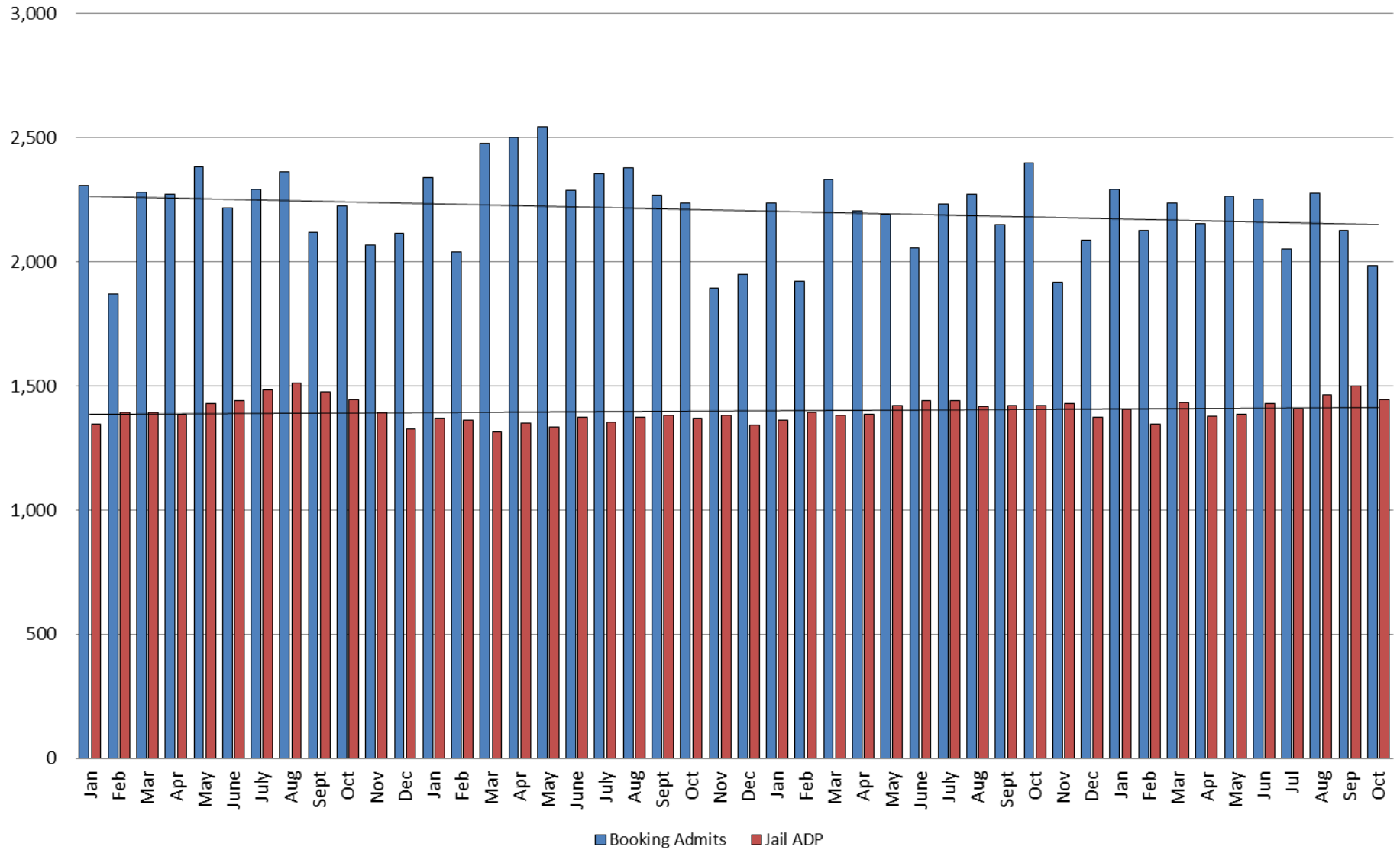
TOTAL MONTHLY ADP: JAIL (Booking, Detention Facility, Work Release, & Out of County) 2007 - present



This slide shows total monthly ADP for individuals in booking, detention, work release and out-of county (combined)



Booking Admits & Total Monthly ADP (Jail): 2013 - present



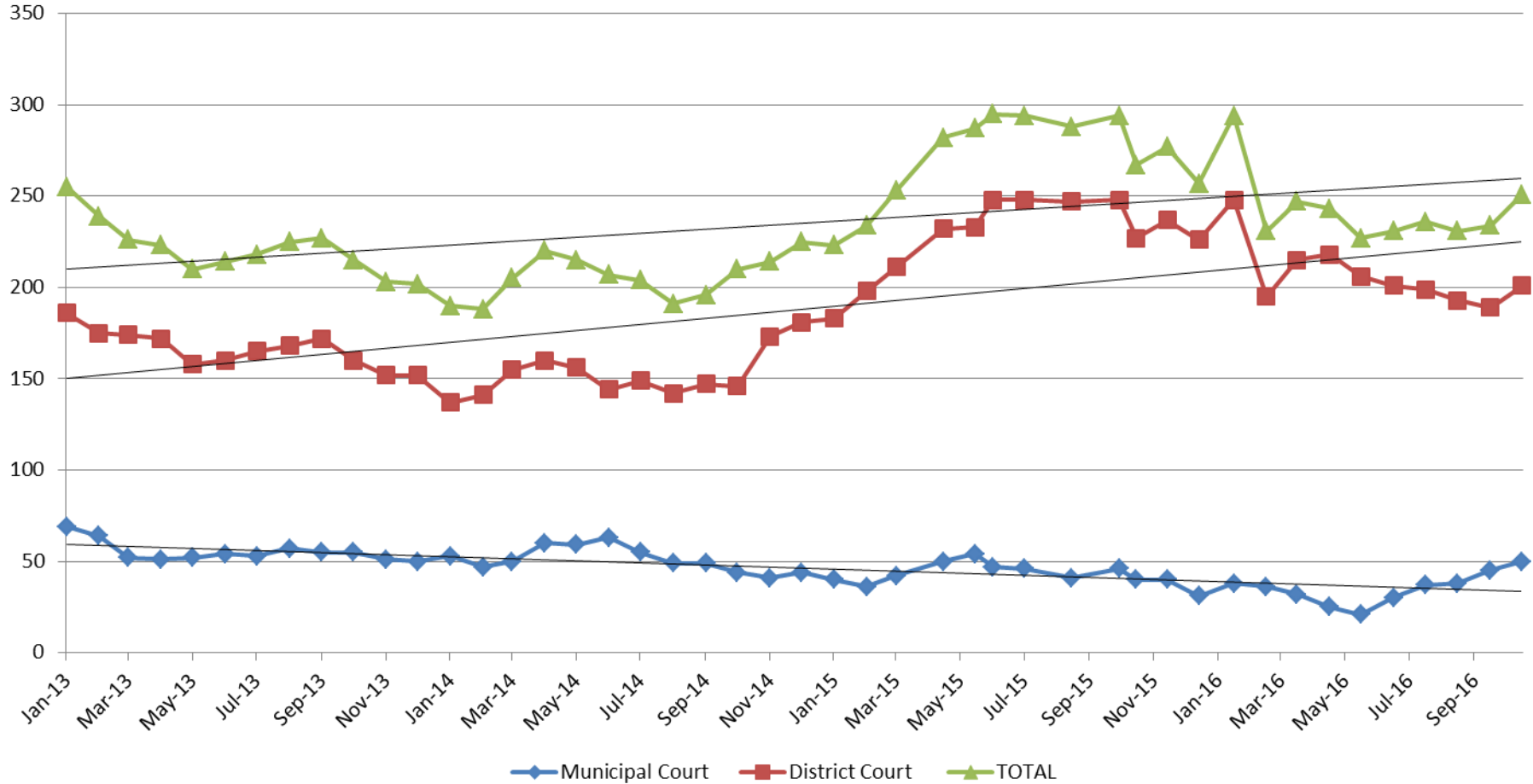
Jail includes individuals in booking, detention, work release and out-of county (combined)

(data obtained from detention facility)



Sedgwick County...
working for you

Pretrial Services Program (PSP) Monthly ADP: January 2013 - Present



October	2013	2014	2015	2016
Municipal Court	55	44	40	50
District Court	160	146	227	201
TOTAL	215	210	267	251

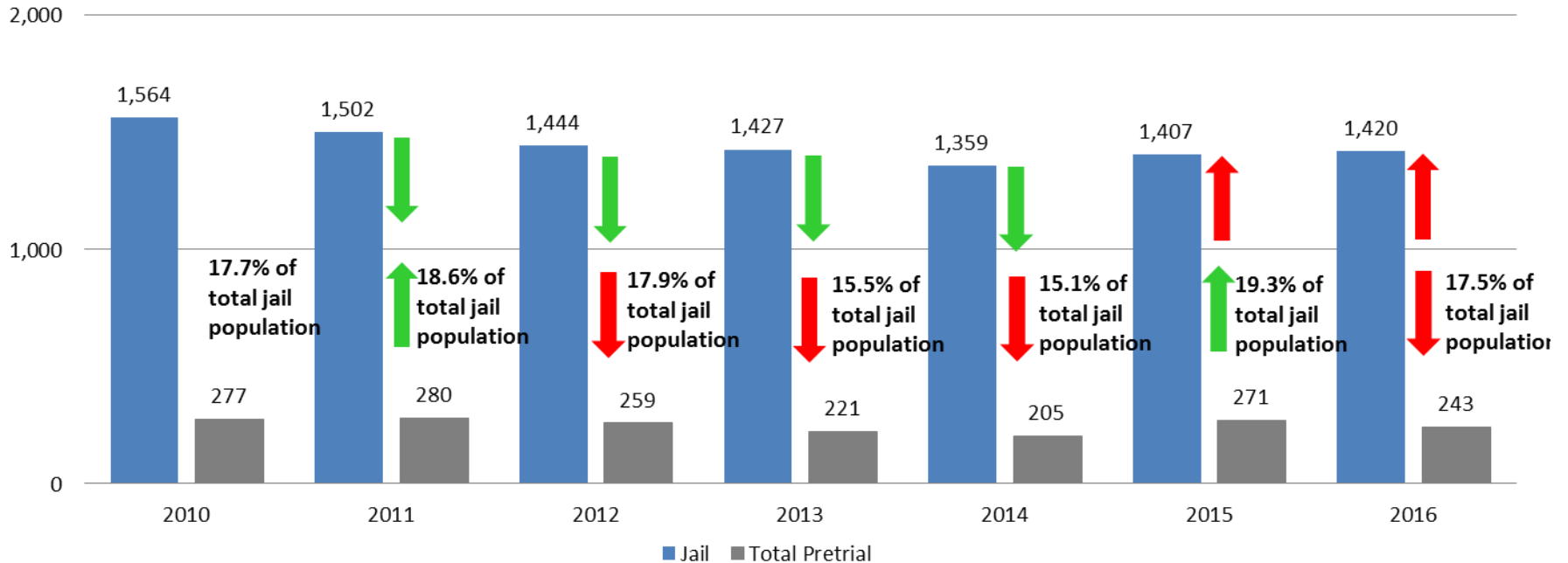
October YTD Avg.	2013	2014	2015	2016
Municipal Court	56	53	44	35
District Court	169	148	228	207
TOTAL	225	203	272	242



(data obtained from Pretrial Services)

Correlation: Total & PSP

Total Annual ADP: 2010 - Present



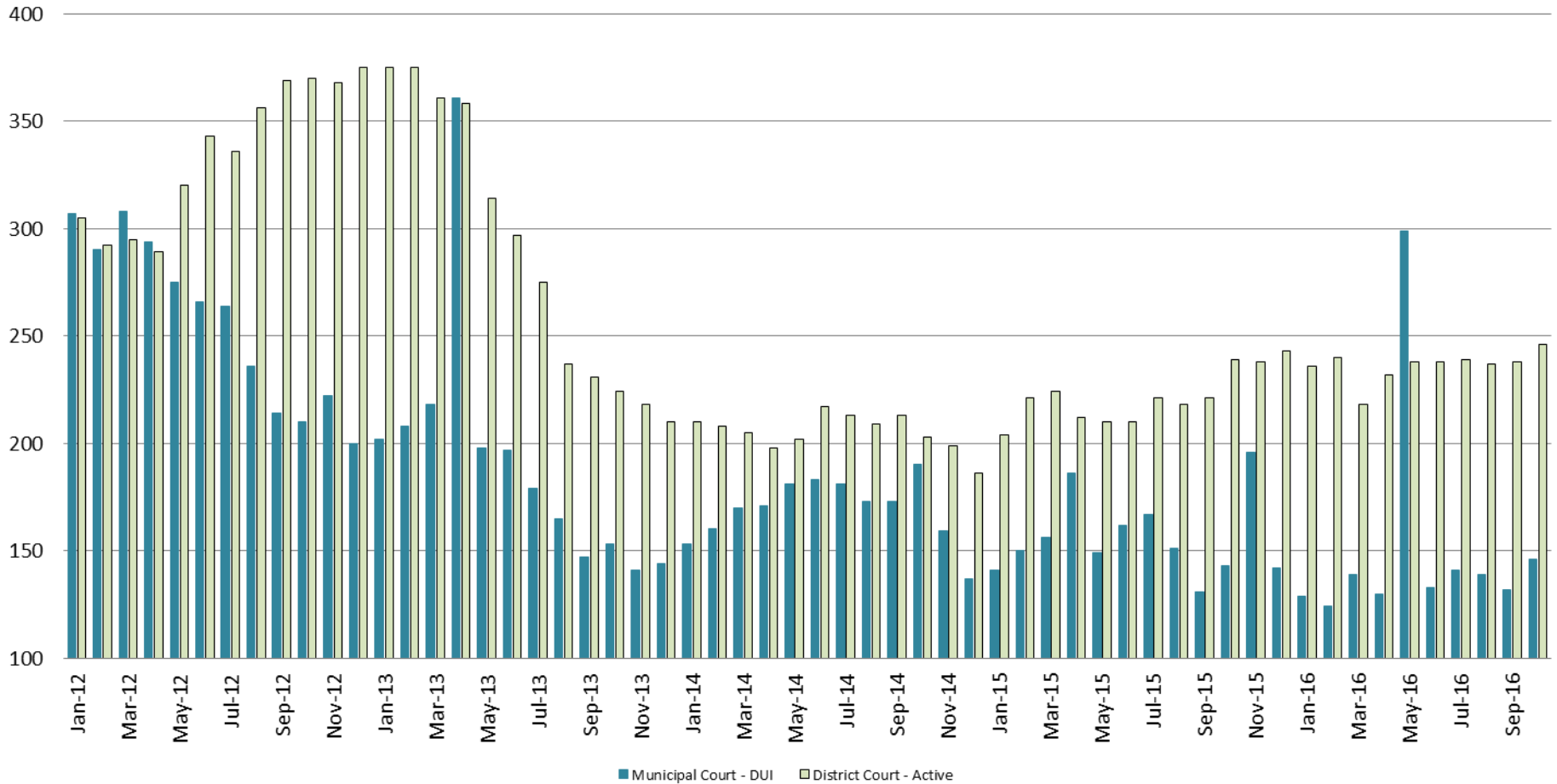
Arrows represent the overall increase/decrease of the population from year to year

Jail includes individuals in booking, detention, work release and out-of county (combined)



Diversion - Active Caseload

January 2012 - Present



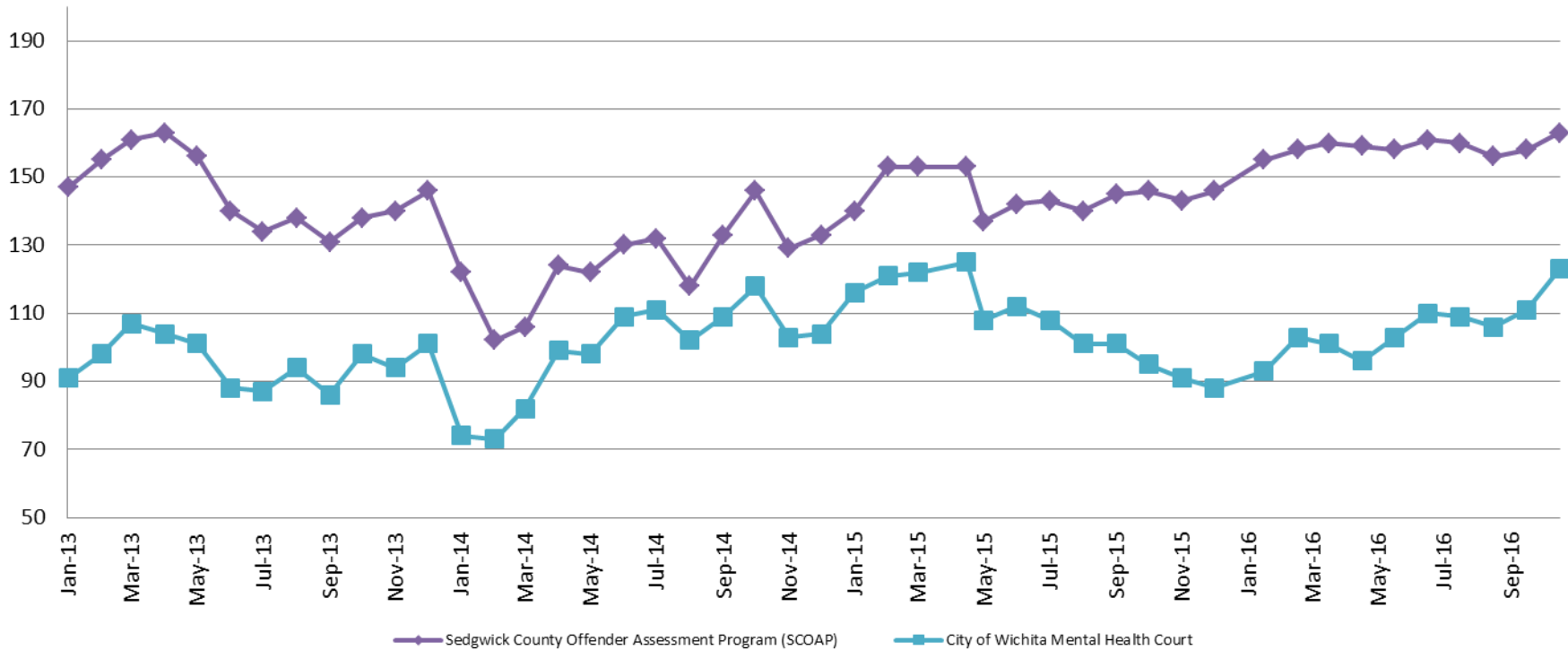
<u>October</u>	<u>2013</u>	<u>2014</u>	<u>2015</u>	<u>2016</u>
Municipal Court- DUI	153	190	143	146
District Court- Active	224	203	239	246

<u>October YTD Avg.</u>	<u>2013</u>	<u>2014</u>	<u>2015</u>	<u>2016</u>
Municipal Court	203	174	154	151
District Court	305	208	218	236



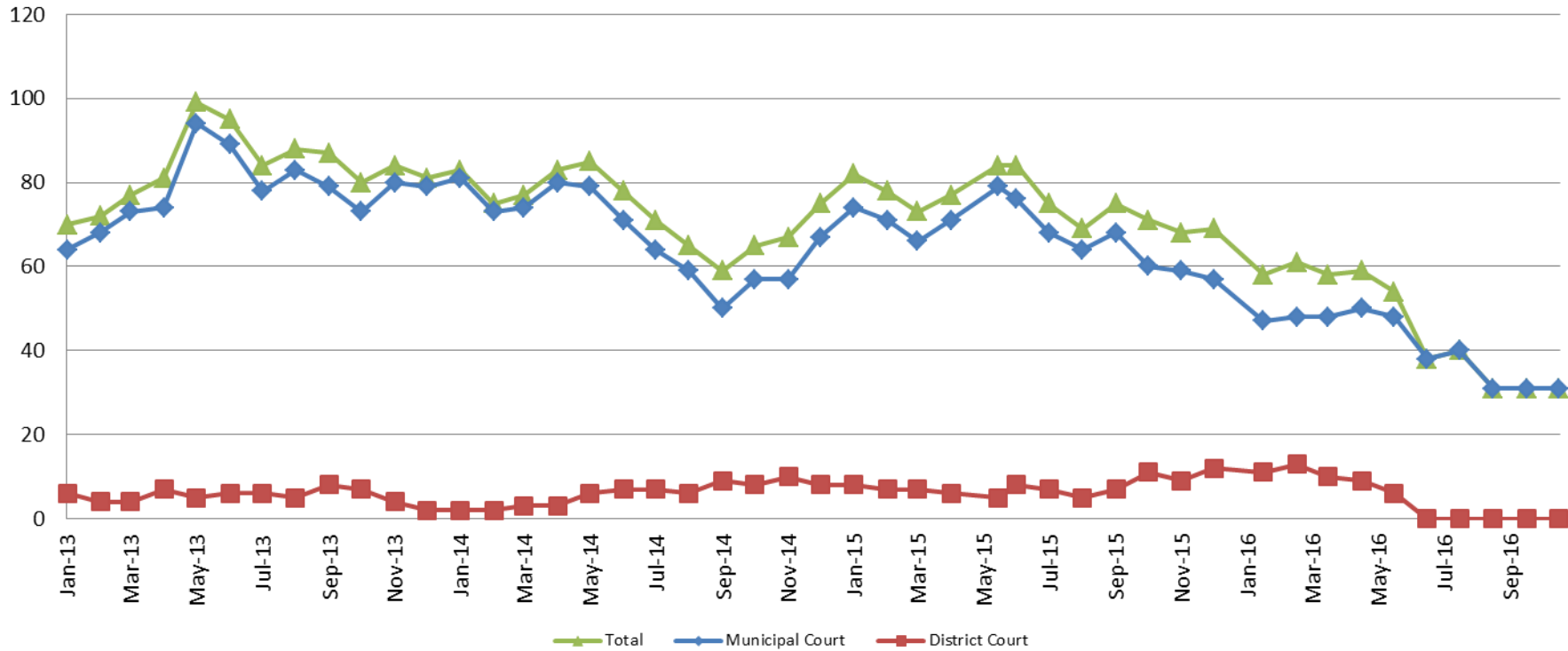
(data obtained from DA's Office & CoW)

Mental Health - ADP 2013 - present



October:	2013	2014	2015	2016
SCOAP	138	146	146	163
CoW – MH Court	98	118	95	123
October YTD Avg.	2013	2014	2015	2016
SCOAP	146	124	145	159
CoW – MH Court	95	98	111	106

Day Reporting - Active Caseload 2013-present

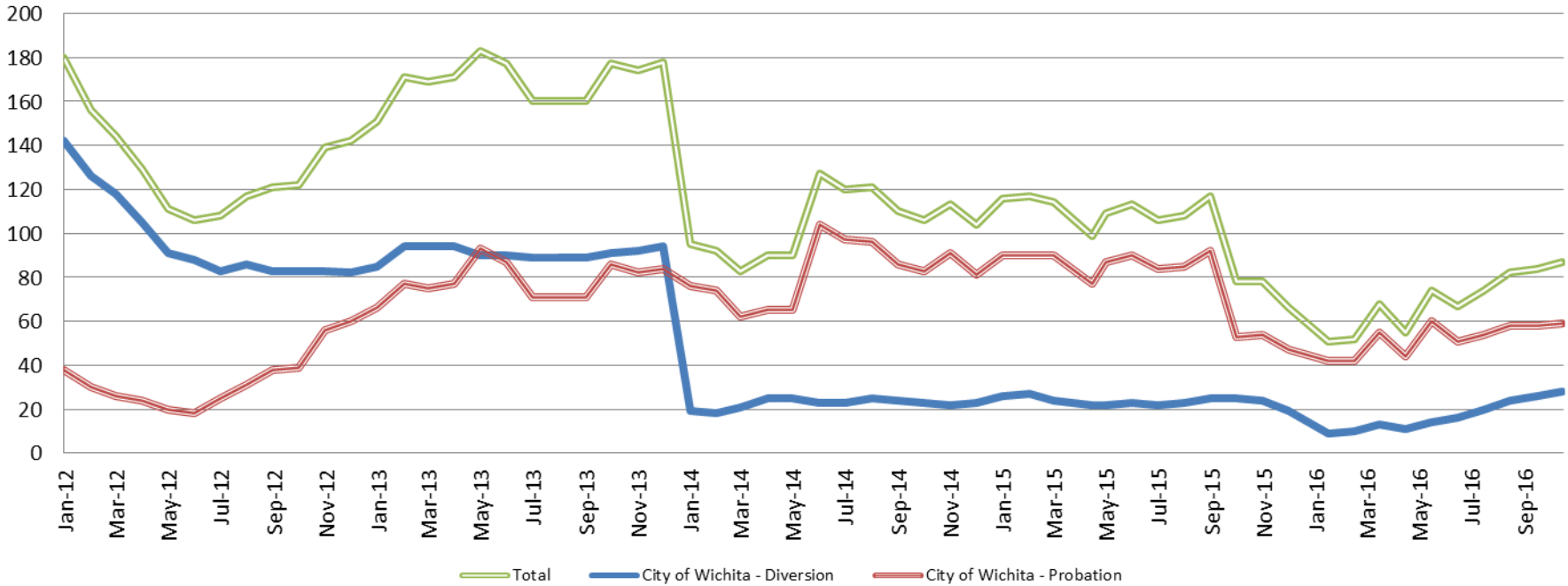


October	2013	2014	2015	2016
Municipal Court	73	57	60	31
District Court	7	8	11	0*
TOTAL	80	65	71	31
October YTD Avg.	2013	2014	2015	2016
Municipal Court	78	69	70	41
District Court	6	5	7	5
TOTAL	83	74	77	46



Drug Court - City of Wichita

ADP: 2012 - present



October - CoW Diversion

2013 = 91
 2014 = 23
 2015 = 25
 2016 = 28

October YTD Avg.

2013 = 91
 2014 = 23
 2015 = 24
 2016 = 17

October - CoW Probation

2013 = 86
 2014 = 83
 2015 = 53
 2016 = 59

October YTD Avg.

2013 = 77
 2014 = 81
 2015 = 84
 2016 = 52

October - CoW Total

2013 = 177
 2014 = 106
 2015 = 78
 2016 = 87

October YTD Avg.

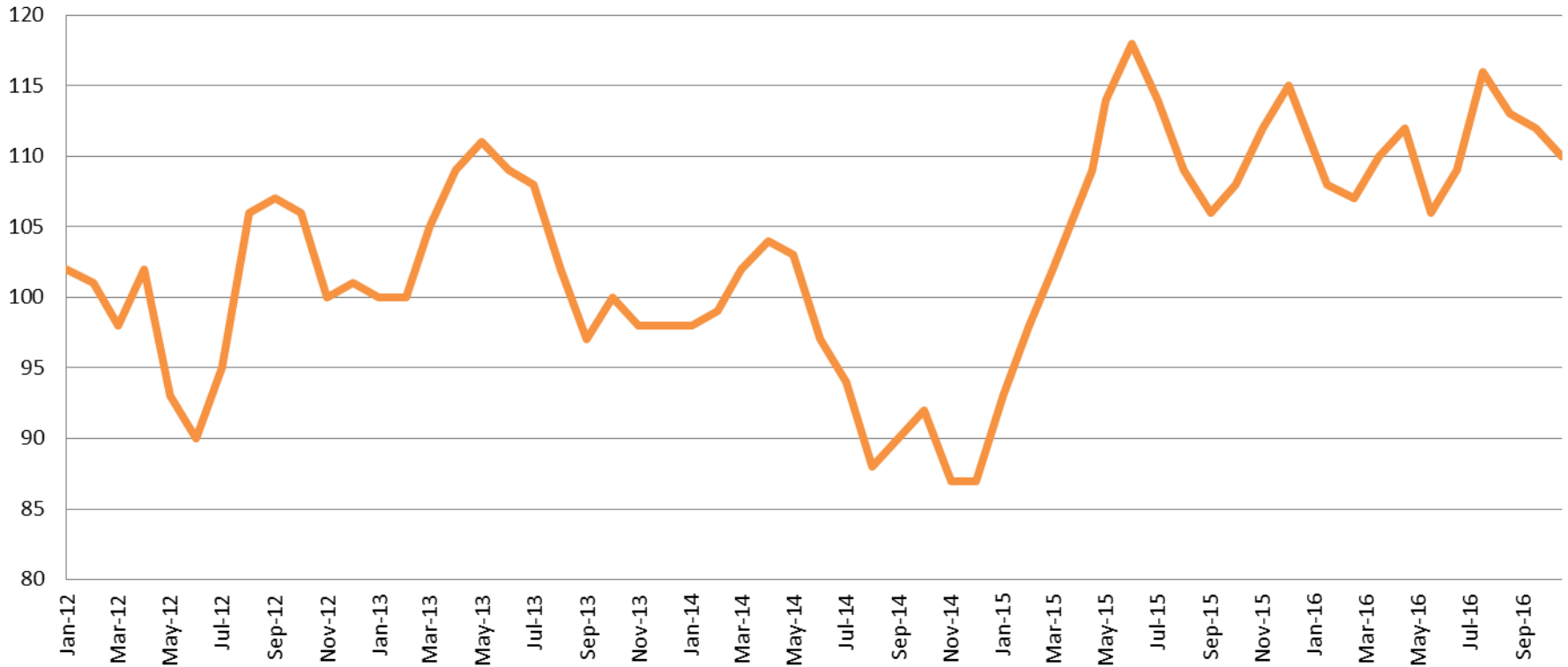
2013 = 168
 2014 = 103
 2015 = 108
 2016 = 69

(data obtained from CoW)



Sedgwick County...
 working for you

Drug Court - Sedgwick County ADP: 2012 - present



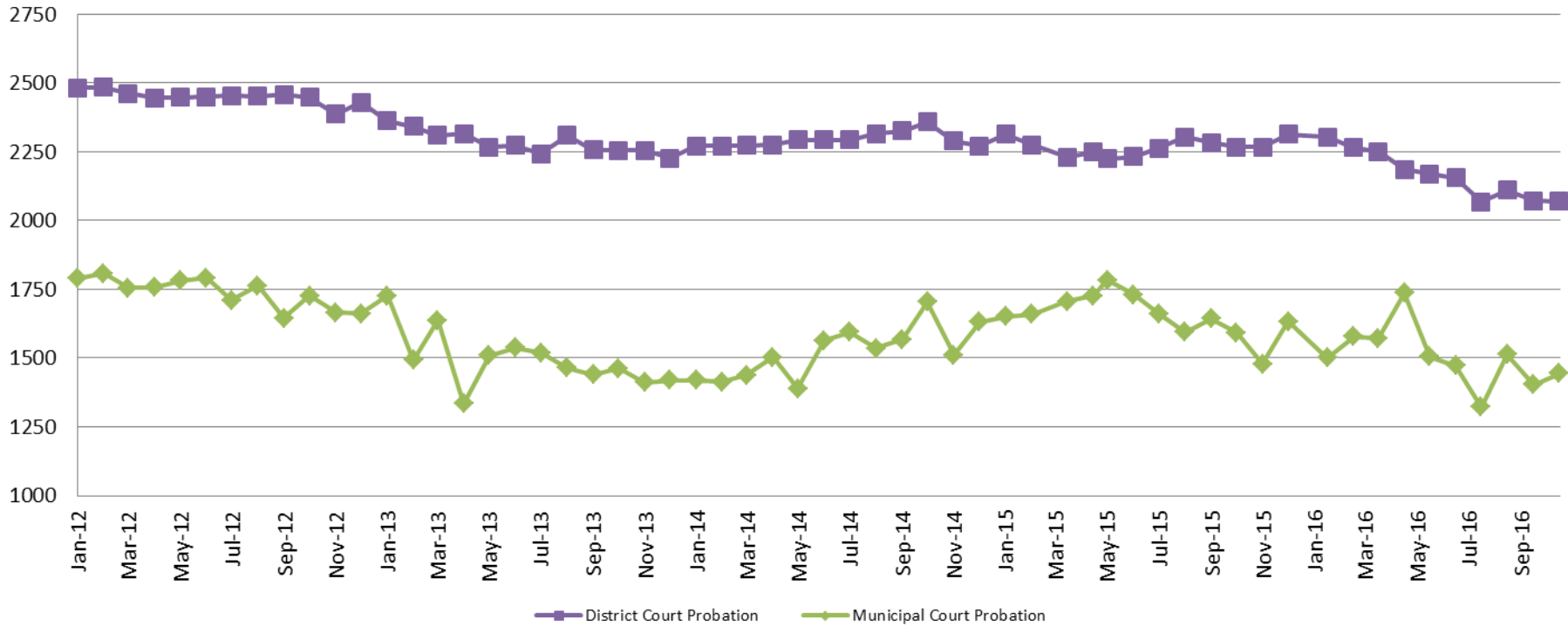
October - SG CO

2013 = 100
2014 = 92
2015 = 108
2016 = 110

October YTD Avg.

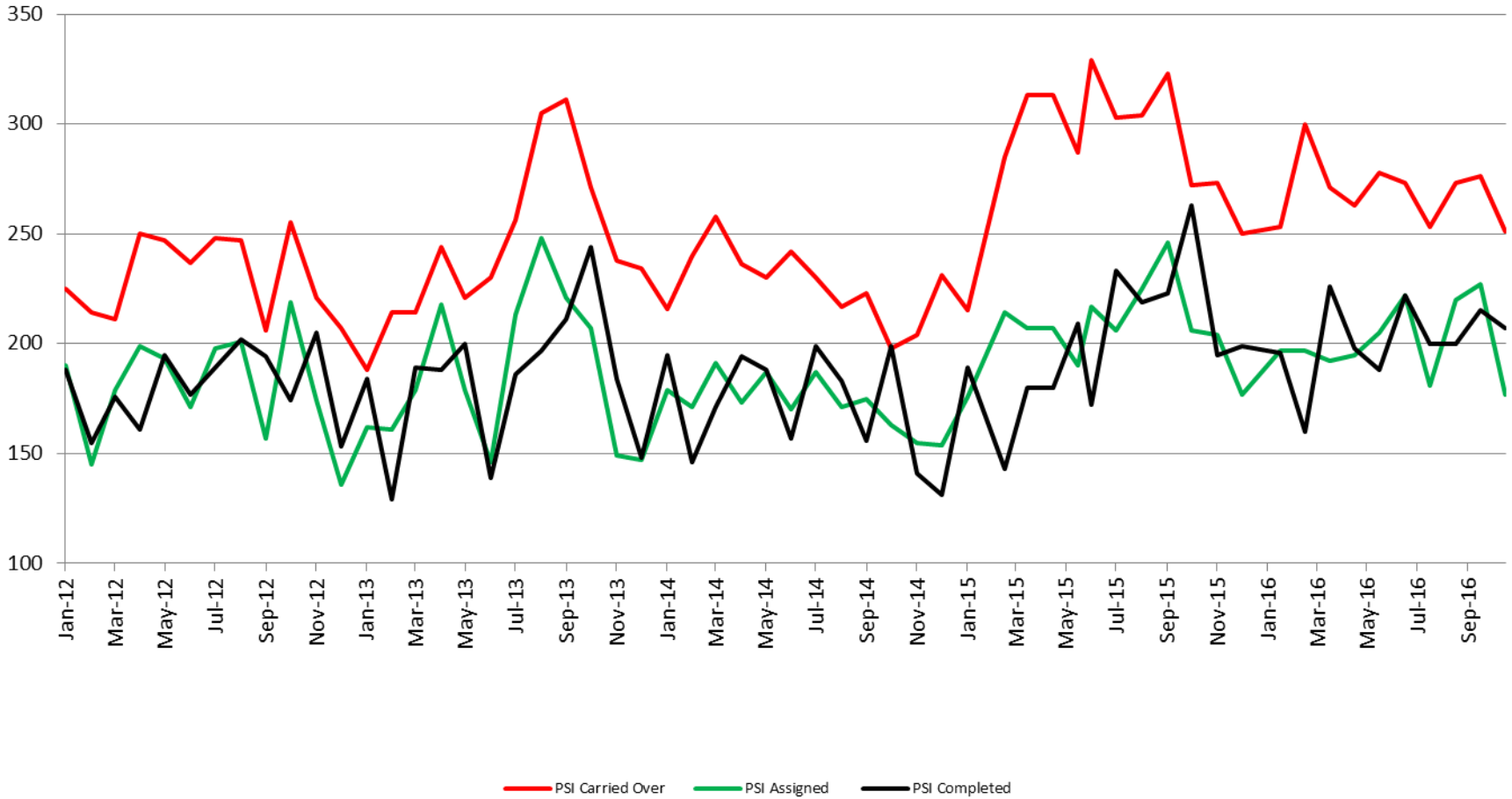
2013 = 104
2014 = 97
2015 = 107
2016 = 110

Probation - Active Caseloads 2012 - present



October	2013	2014	2015	2016
District Court	2,255	2,358	2,267	2,069
Municipal Court	1,462	1,705	1,592	1,444
October YTD Avg.	2013	2014	2015	2016
District Court	2,293	2,297	2,264	2,165
Municipal Court	1,512	1,513	1,675	1,505

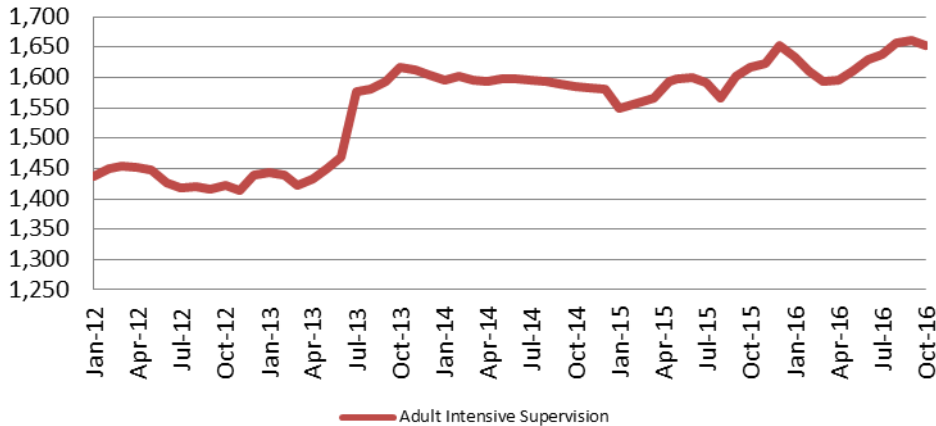
District Court Probation: Pre-Sentence Investigation 2012 - present



(data obtained from District Court)

Community Corrections

Adult Intensive Supervision Probation (AISP)
ADP 2012 - present



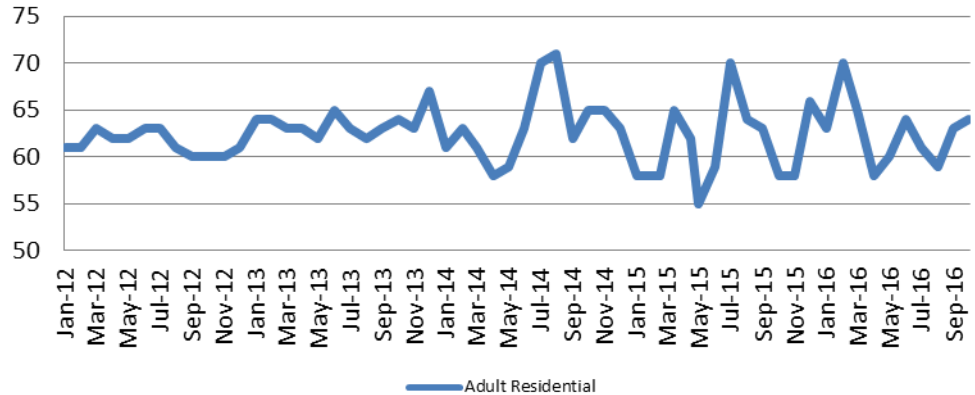
<u>October</u>	<u>October YTD Avg.</u>
2013 = 1,616	2013 = 1,502
2014 = 1,586	2014 = 1,595
2015 = 1,616	2015 = 1,584
2016 = 1,653	2016 = 1,628

(data obtained from SG CO Dept. of Corrections)

*KDOC changed population count to include drug court, residential and AISP beginning July 2013.

Adult Residential: ADP
2012 - present

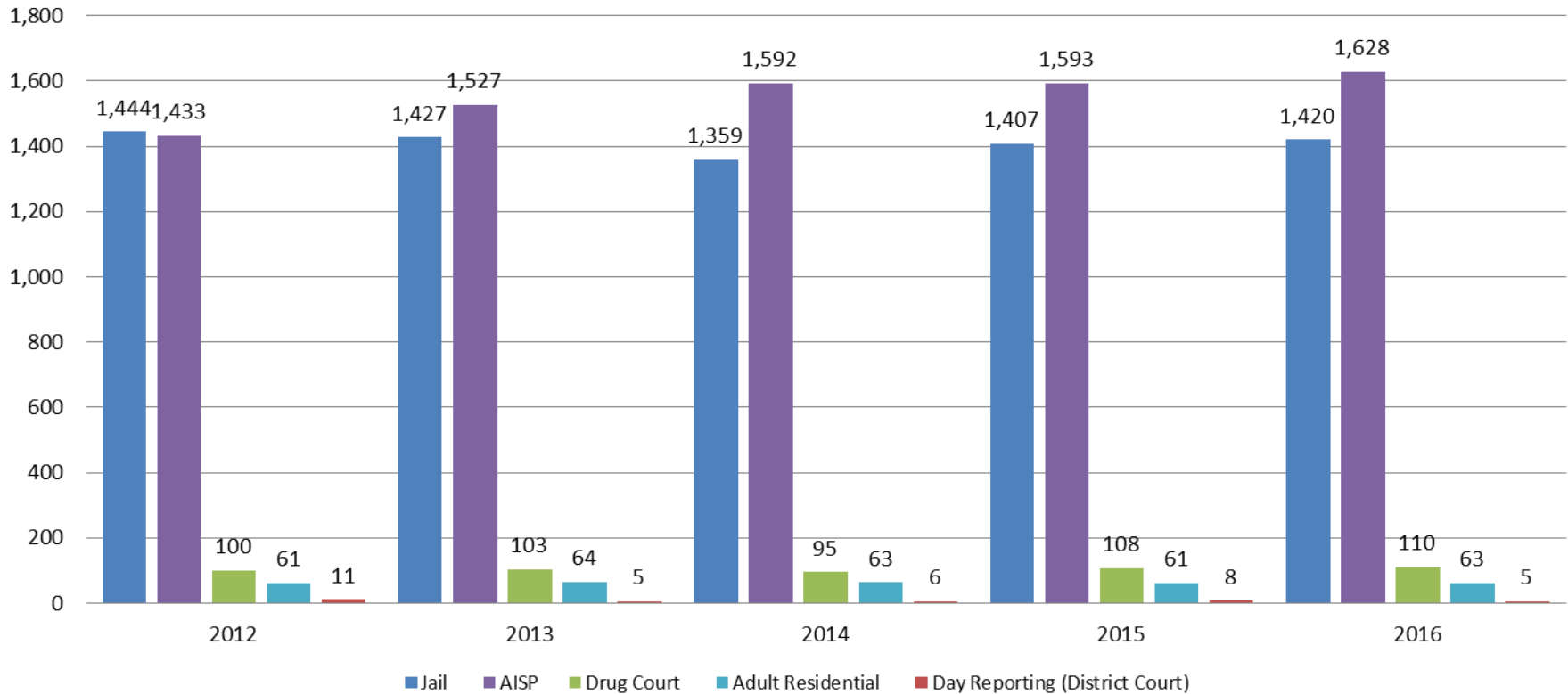
<u>October</u>	<u>October YTD Avg.</u>
2013 = 64	2013 = 63
2014 = 65	2014 = 63
2015 = 58	2015 = 61
2016 = 64	2016 = 63



(data obtained from SG CO Dept. of Corrections)

Correlation: Total & Sedgwick County Programs (Adult)

Total Annual ADP: 2012 - Present



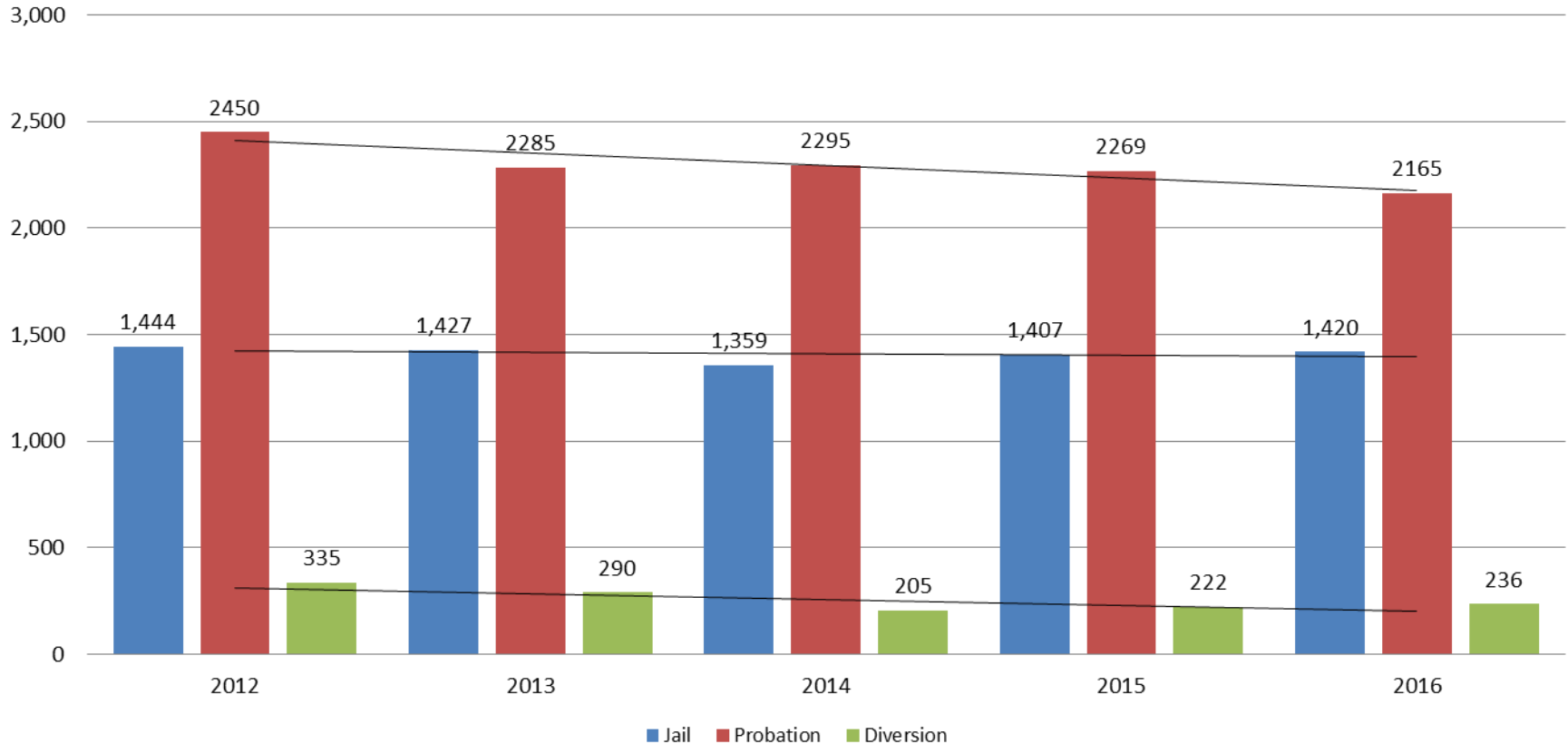
Jail includes individuals in booking, detention, work release and out-of county (combined)

(data obtained from detention facility, SG Dept. of Corrections, Pretrial Services, & CoW)



Correlation: Total & District Court Programs

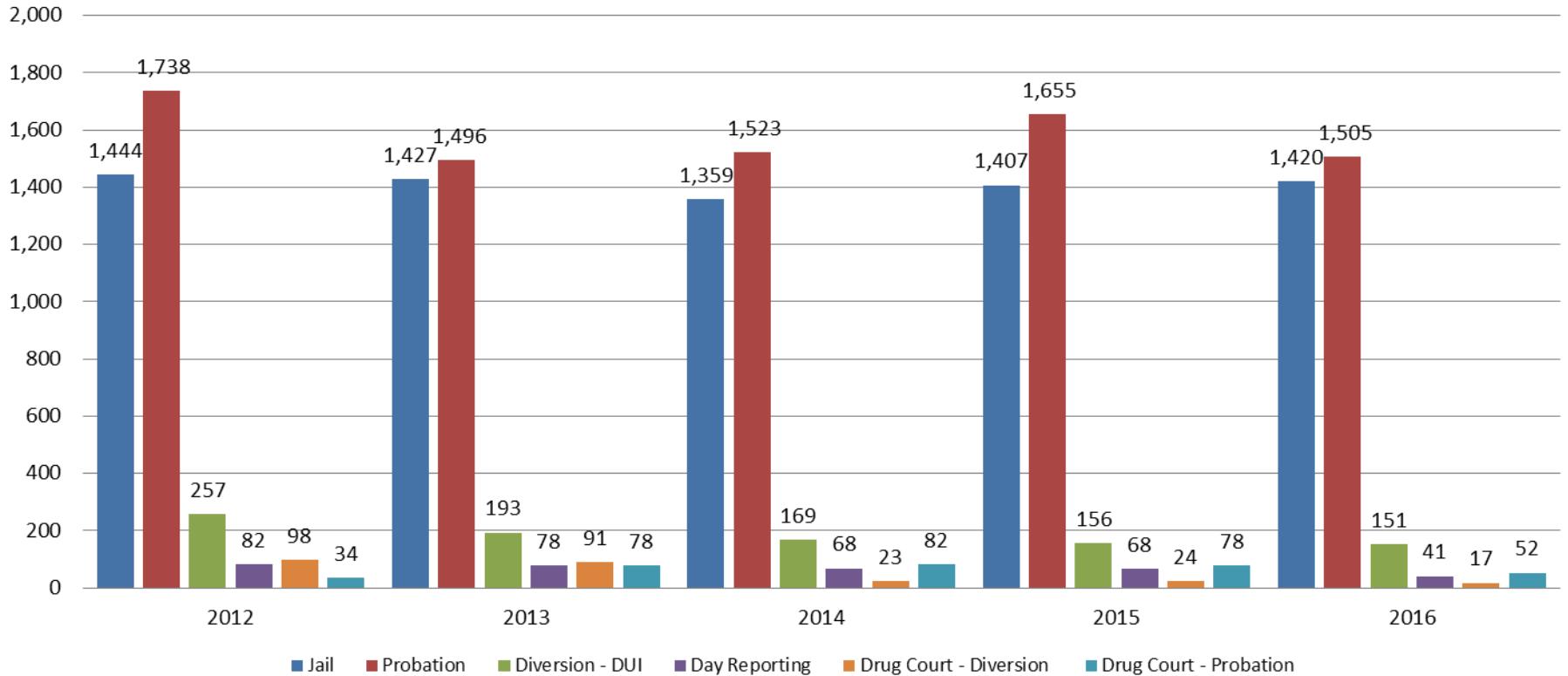
Total Annual ADP: 2012 - Present



Jail includes individuals in booking, detention, work release and out-of county (combined)

Correlation: Total & City of Wichita / Municipal Court Programs

Total Annual ADP: 2012 - present

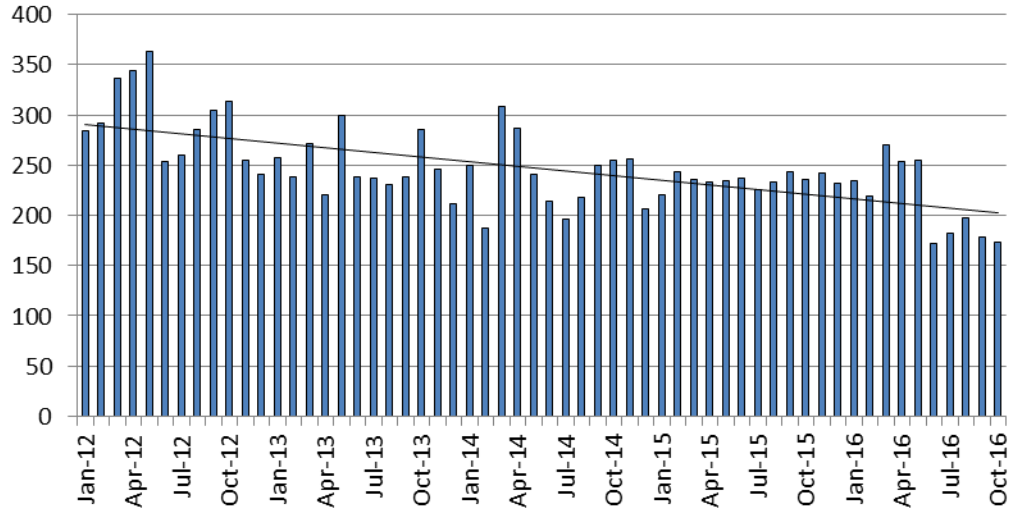


Jail includes individuals in booking, detention, work release and out-of county (combined)



Juvenile

JIAC Intakes: 2012 - present



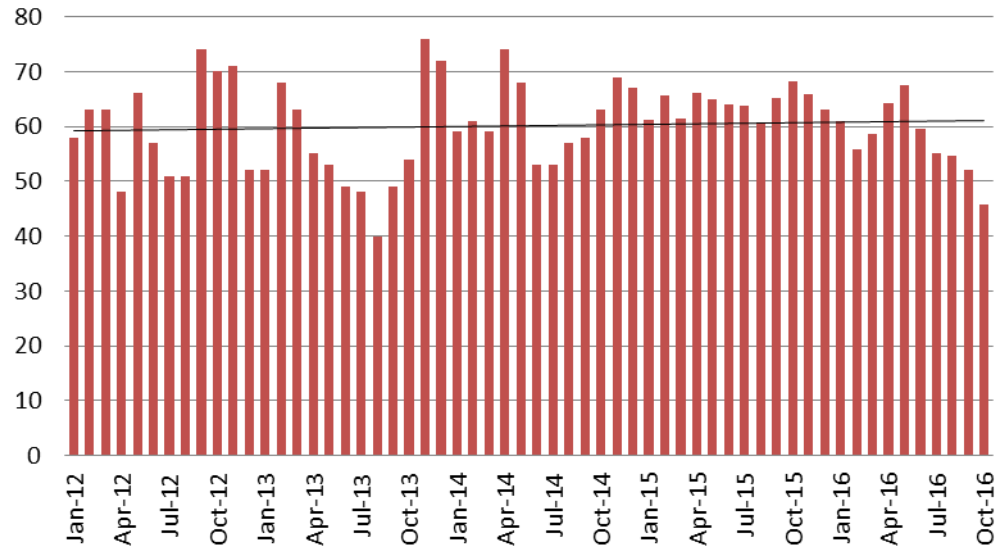
October	October YTD Average
2013 = 286	2013 = 252
2014 = 255	2014 = 241
2015 = 236	2015 = 234
2016 = 173	2016 = 214

(data obtained from SG CO Dept. of Corrections)

October	October YTD Avg.
2013 = 54	2013 = 53
2014 = 63	2014 = 61
2015 = 68	2015 = 64
2016 = 46	2016 = 57

(data obtained from SG CO Dept. of Corrections)

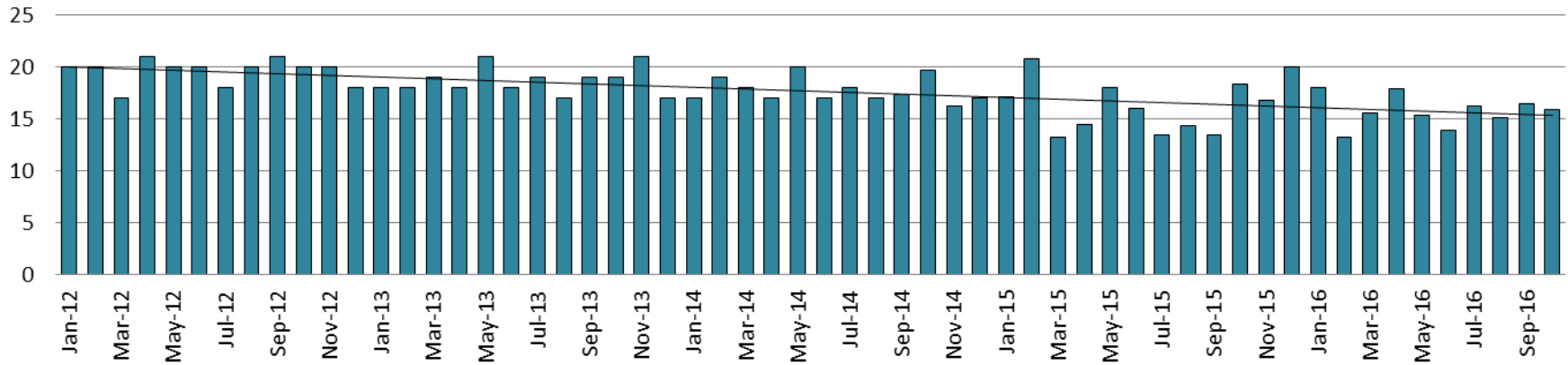
JDF ADP: 2012 - present



Juvenile Detention Alternatives

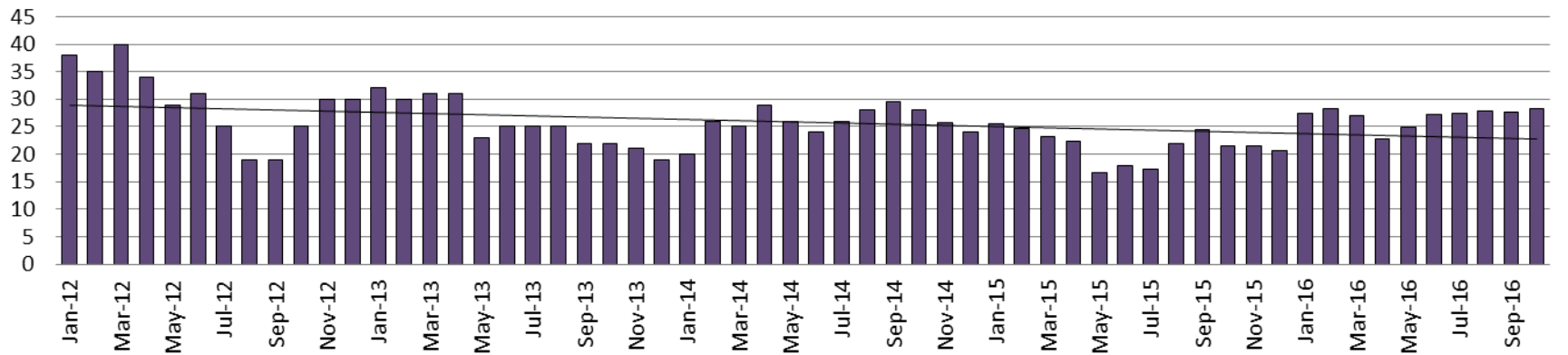
Juvenile Residential Facility (JRF)

ADP: 2012 - present



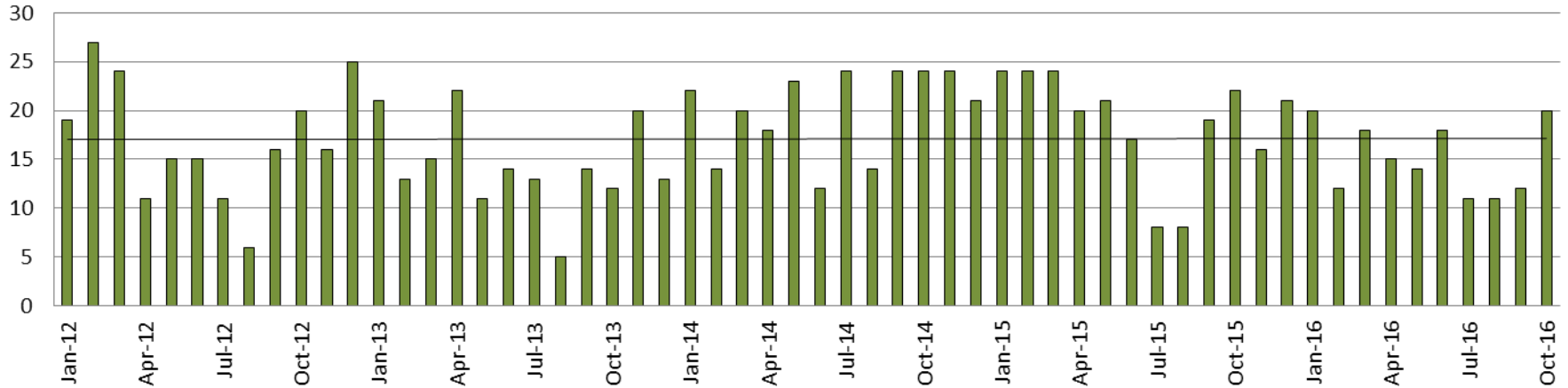
Home-Based Supervision

ADP: 2012 - present

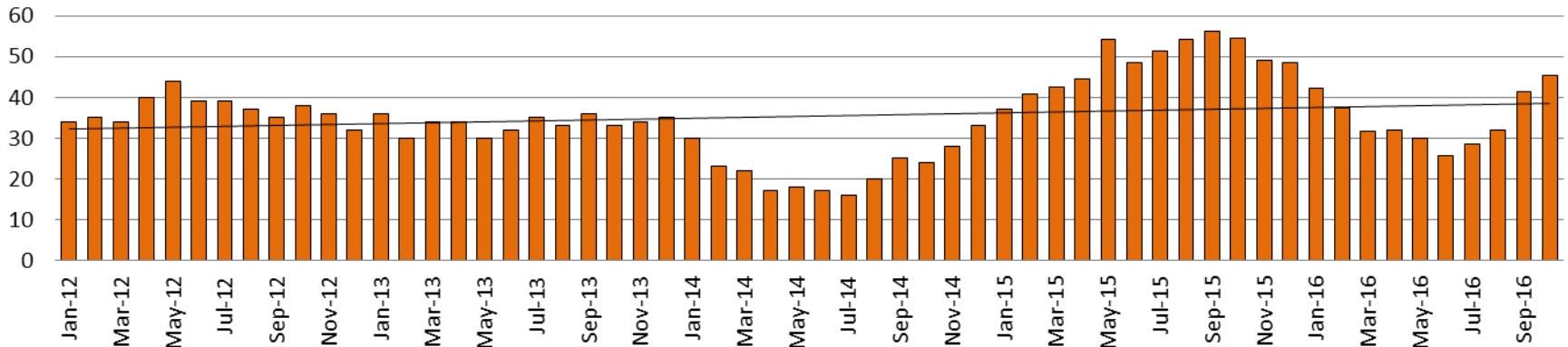


Juvenile Detention Alternatives

Weekend Alternative Detention Program 2012 - present



Detention Advocacy Case Management Services ADP: 2012 - present



Juvenile Detention Services

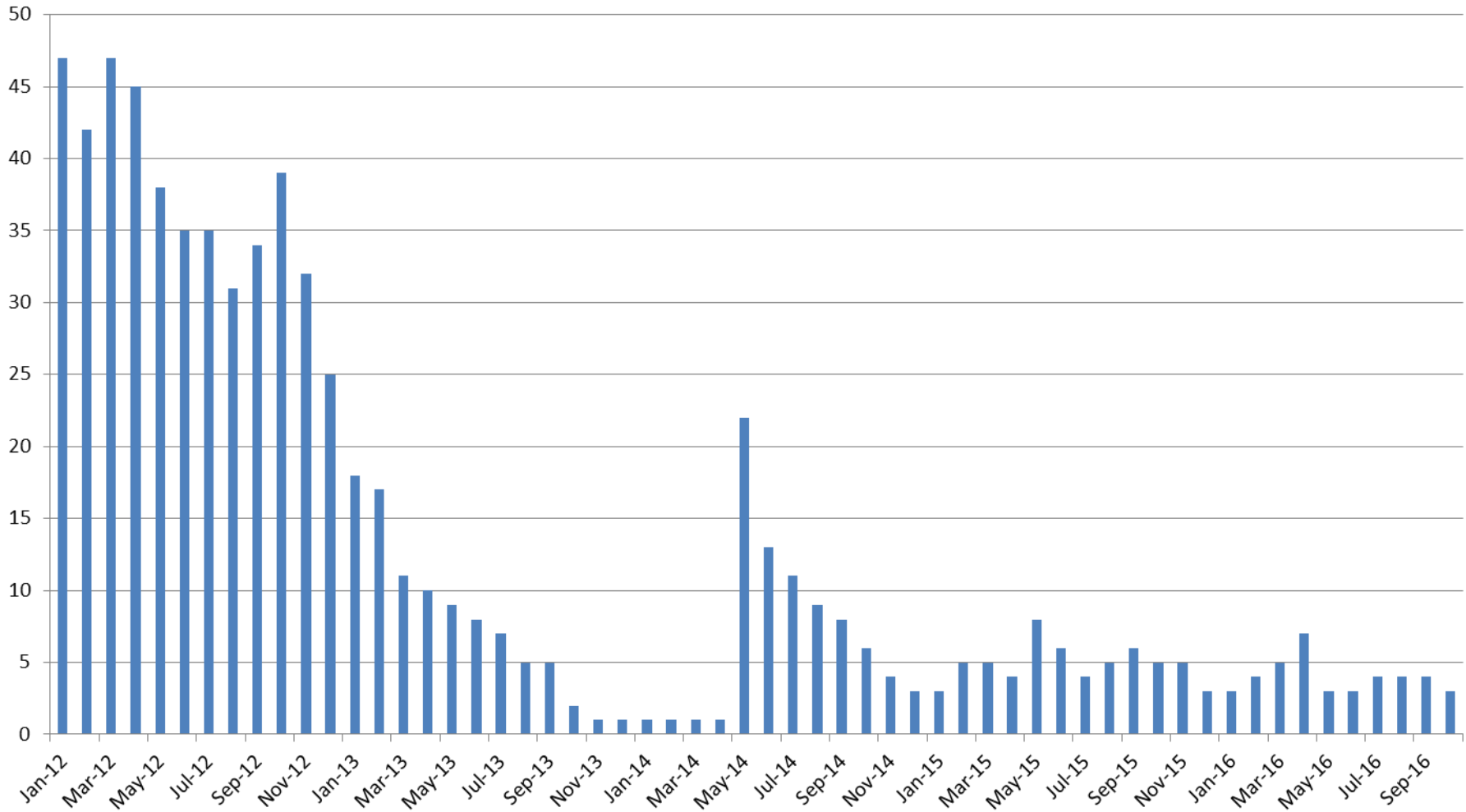
September ADP	2013	2014	2015	2016
Juvenile Detention Facility	54	63	68	46
Juvenile Residential Facility	19	20	18	16
Home Based Supervision	22	28	22	28
Detention Advocacy Case Management Services	33	24	54	45
Weekend Alternative Detention Program (total)	12	24	22	20

September YTD AVERAGE	2013	2014	2015	2016
Juvenile Detention Facility	53	61	64	57
Juvenile Residential Facility	19	18	16	16
Home Based Supervision	27	26	22	27
Detention Advocacy Case Management Services	33	21	48	35
Weekend Alternative Detention Program	14	20	19	15



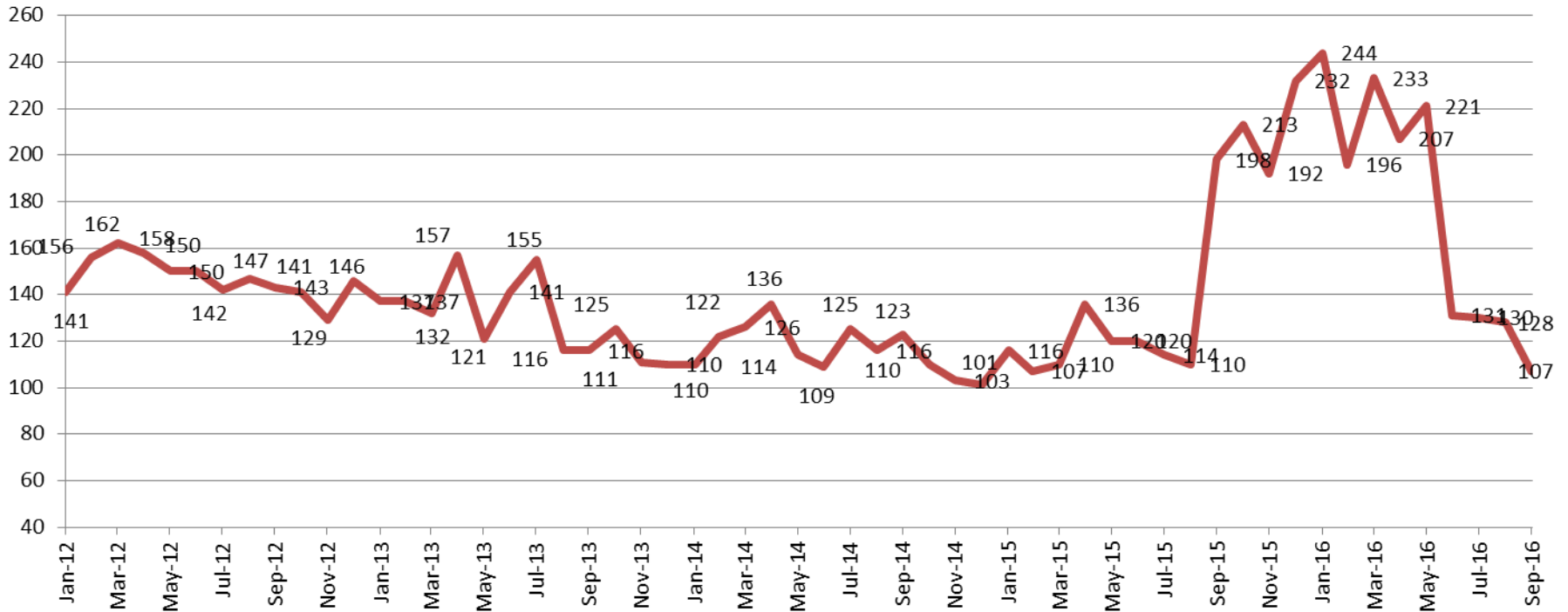
Monthly Jail Snapshot: October 31, 2016

BICE Holds 2012-Present



Monthly Jail Snapshot: October 31, 2016

Felony Commitments: February 2012 - present



October:

2012 = 143

2013 = 116

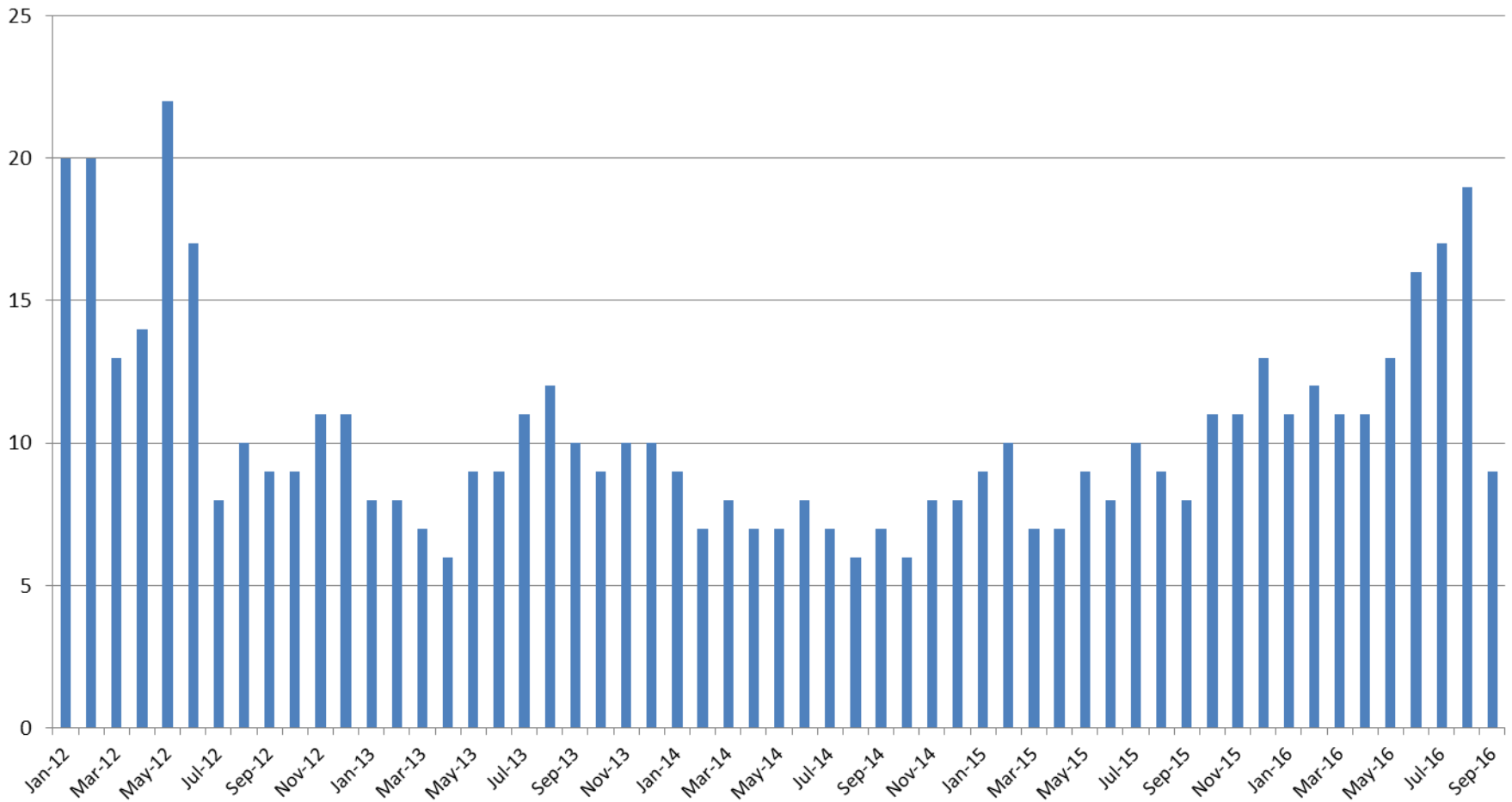
2014 = 123

2015 = 198

2016 = 107



Journal Entry Completion (Average Days) January 2013-Present



This data is always reported a month behind

