

# Criminal Justice Coordinating Council

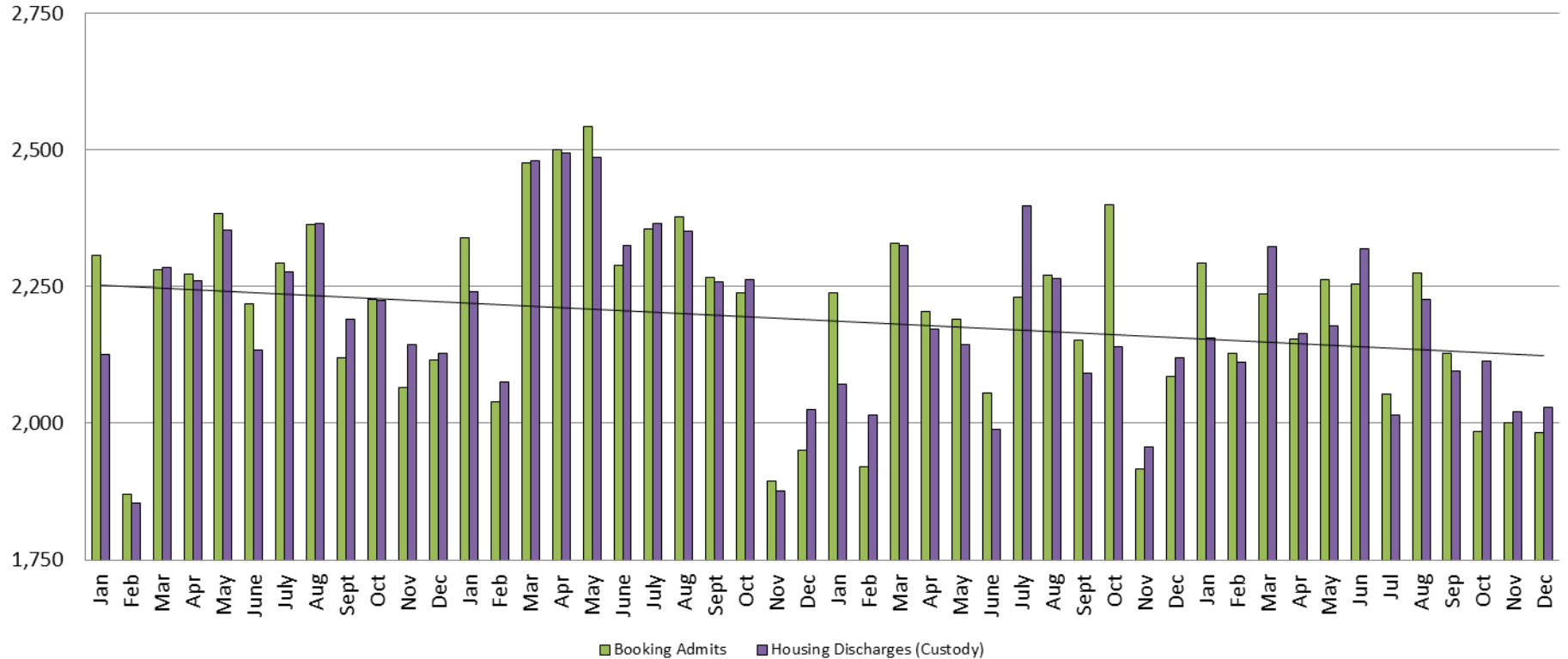
## Population Report & Program Trends

January 2017



# Detention Facility

## Booking Admits & Housing Discharges from Custody January 2013 - Present



### Housing Discharges for December

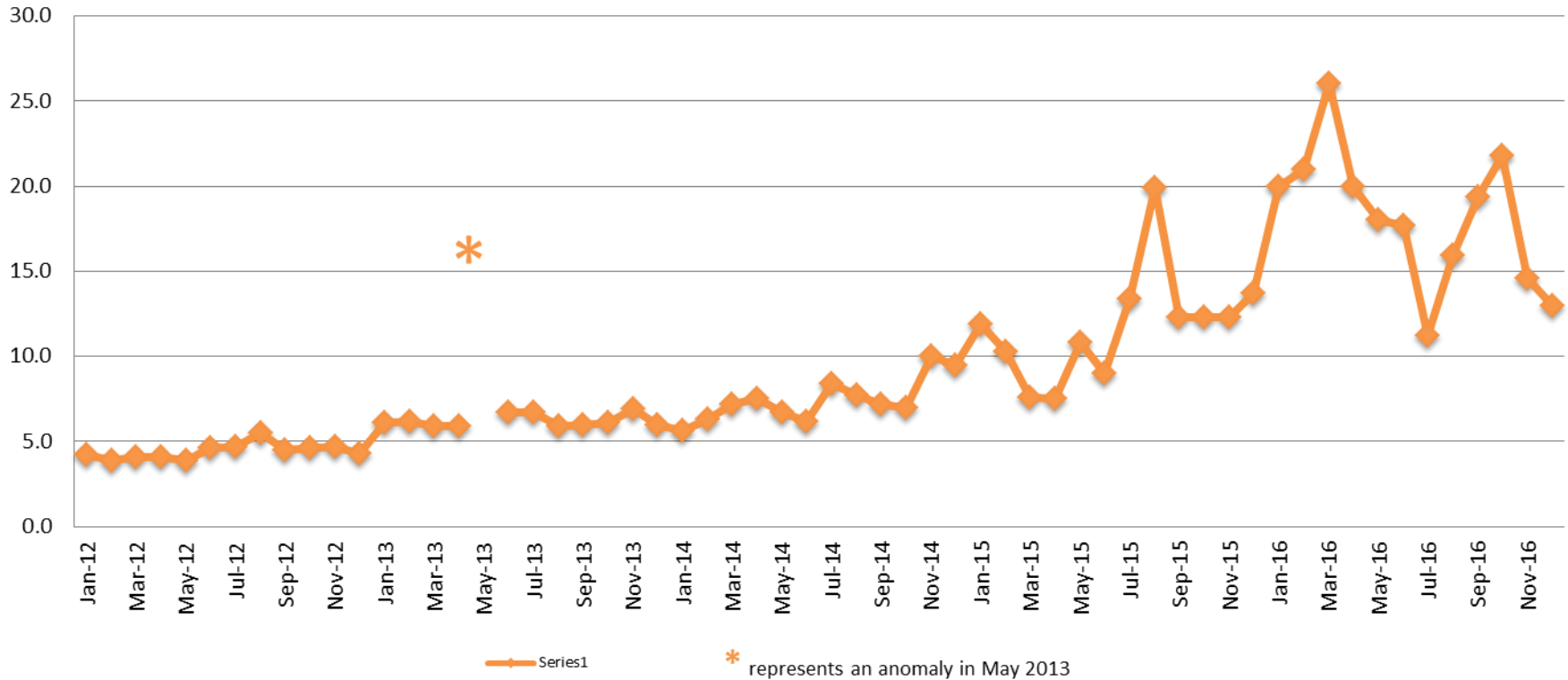
2014 = 2,026  
 2015 = 2,119  
 2016 = 2,029

### Bookings for December

2014 = 1,950  
 2015 = 2,086  
 2016 = 1,982



## Average Length of Stay: Booking (Hours) January 2012 - Present



### December

2012 = 4.3  
 2013 = 6.0  
 2014 = 9.5  
 2015 = 13.7  
 2016 = 13.0

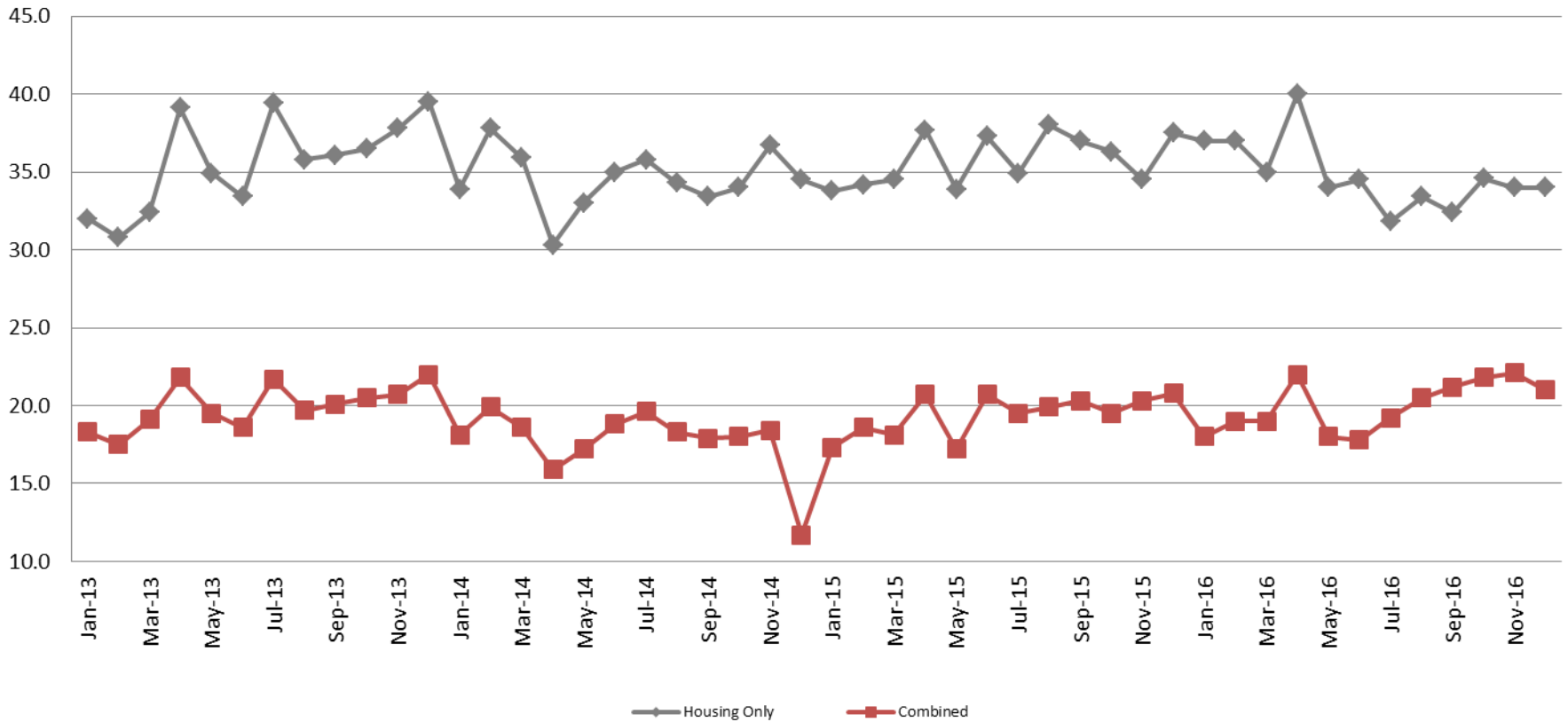
### December YTD Avg.

2012 = 4.4  
 2013 = 7.1  
 2014 = 7.4  
 2015 = 11.8  
 2016 = 18.2

(data obtained from detention facility)

# Average Length of Stay: Housing & Combined (Days)

## January 2013 - Present



### December Housing

2013 = 39.5  
 2014 = 34.5  
 2015 = 37.5  
 2016 = 34.0

### December Housing YTD Avg.

2013 = 35.6  
 2014 = 34.6  
 2015 = 35.8  
 2016 = 34.8

### December Combined

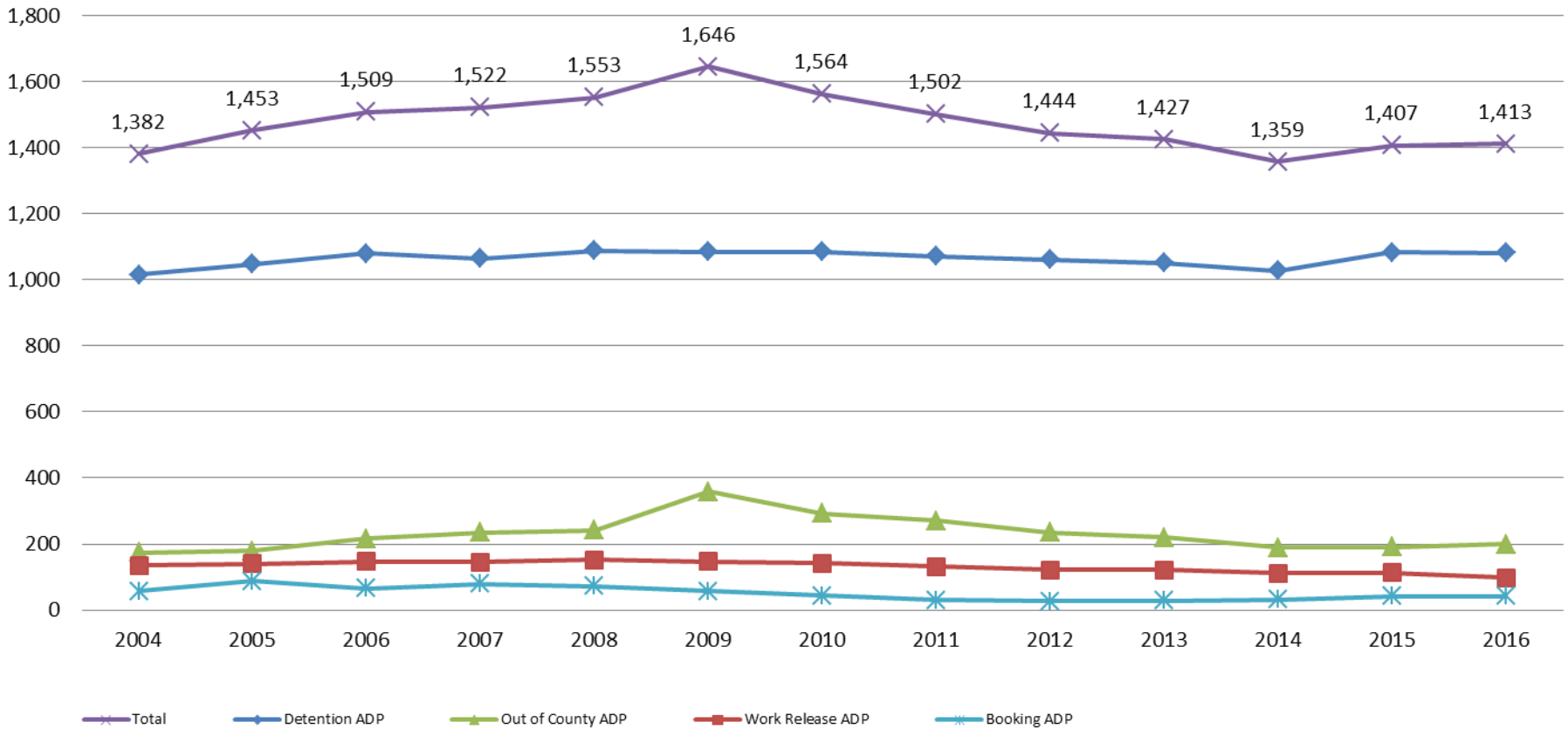
2013 = 22.0  
 2014 = 11.7  
 2015 = 20.8  
 2016 = 21.0

### December Combined YTD Avg.

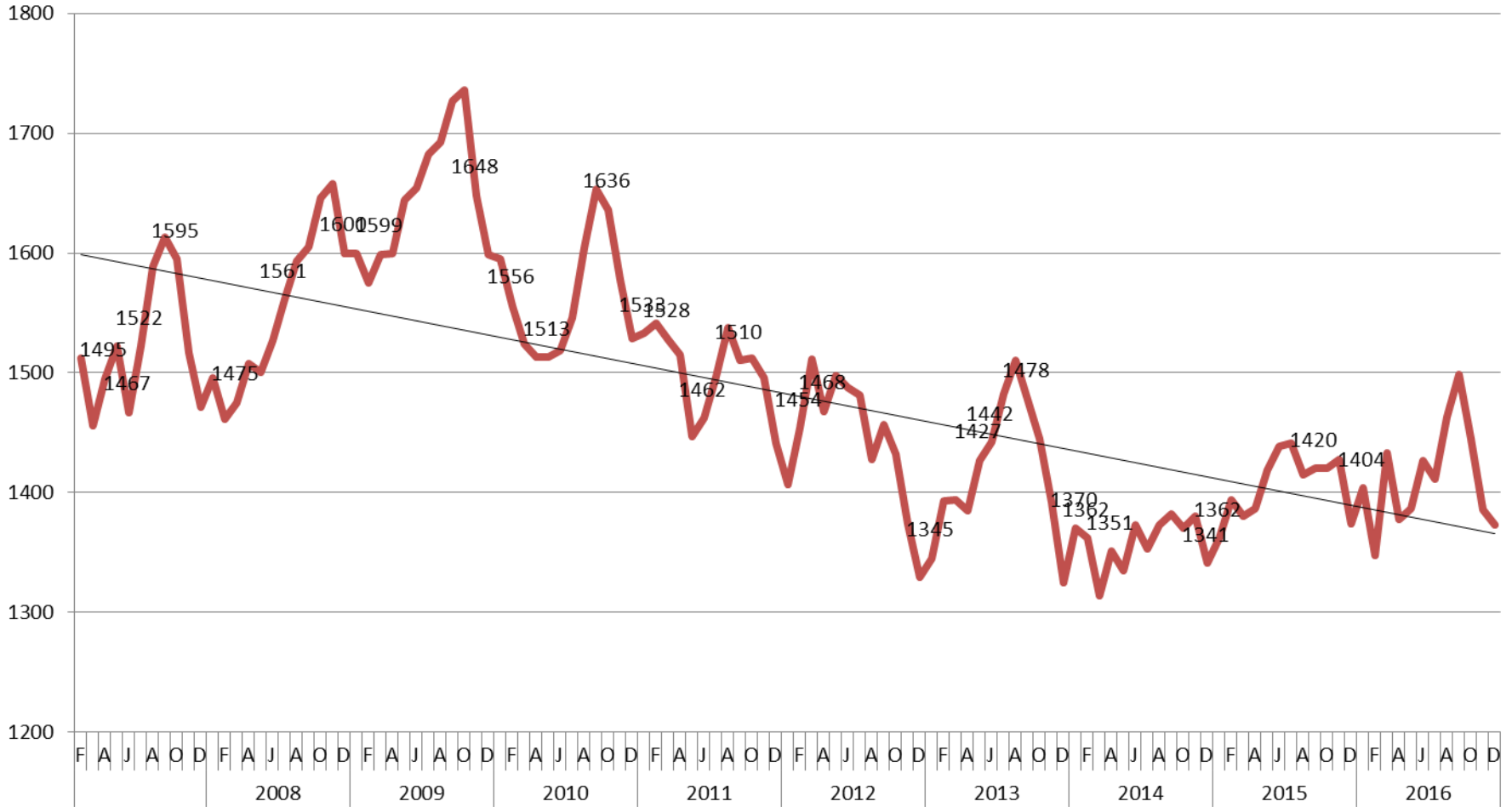
2013 = 20.0  
 2014 = 17.7  
 2015 = 19.4  
 2016 = 20.0

# Jail: Annual Average Daily Population (ADP)

**TRENDS: Booking, Detention, Work Release, & Out of County**  
**Annual ADP: 2004 - present**



# TOTAL MONTHLY ADP: JAIL (Booking, Detention Facility, Work Release, & Out of County) 2007 - present



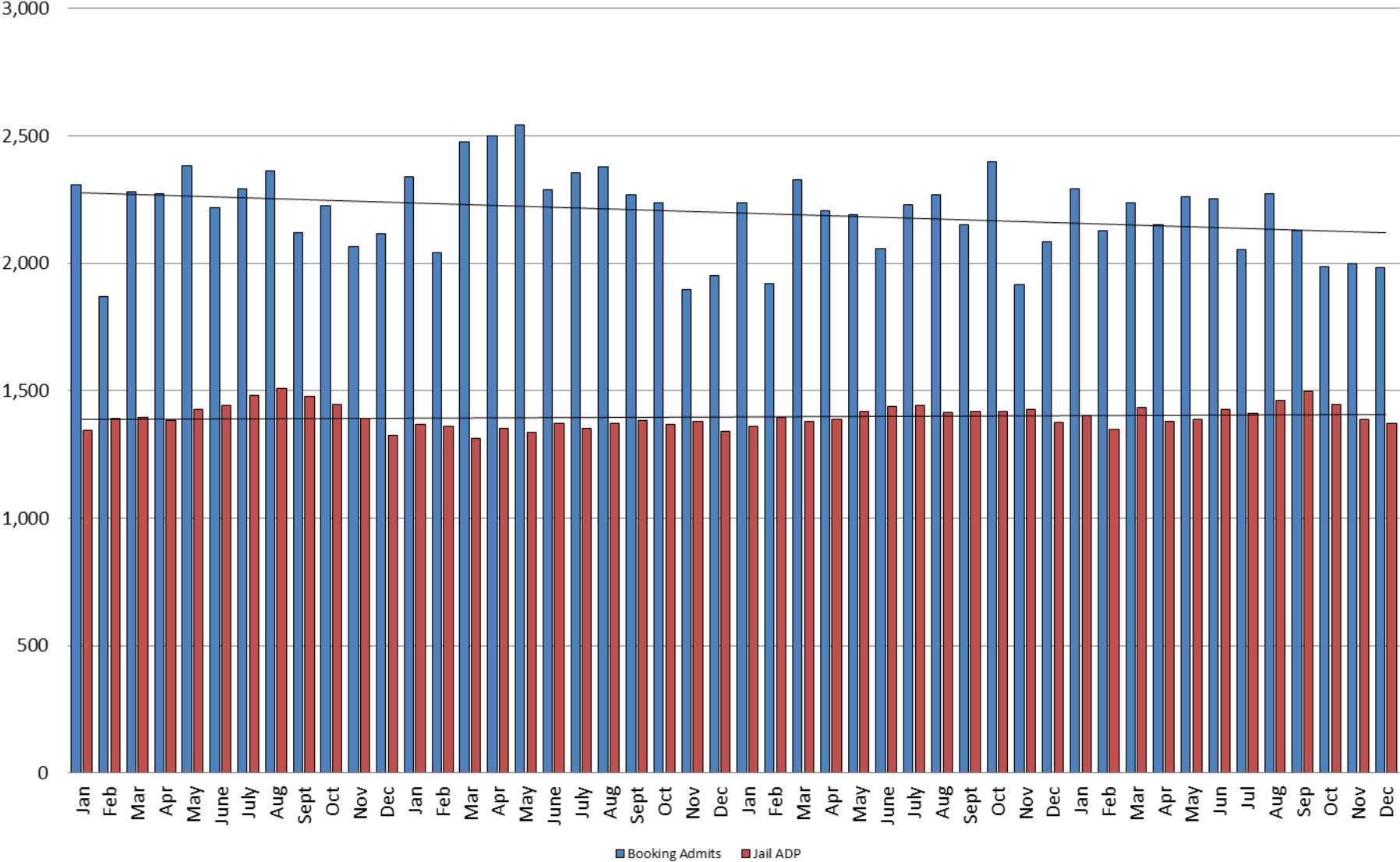
This slide shows total monthly ADP for individuals in booking, detention, work release and out-of county (combined)

(data obtained from detention facility)



Sedgwick County...  
working for you

# Booking Admits & Total Monthly ADP (Jail): 2013 - present

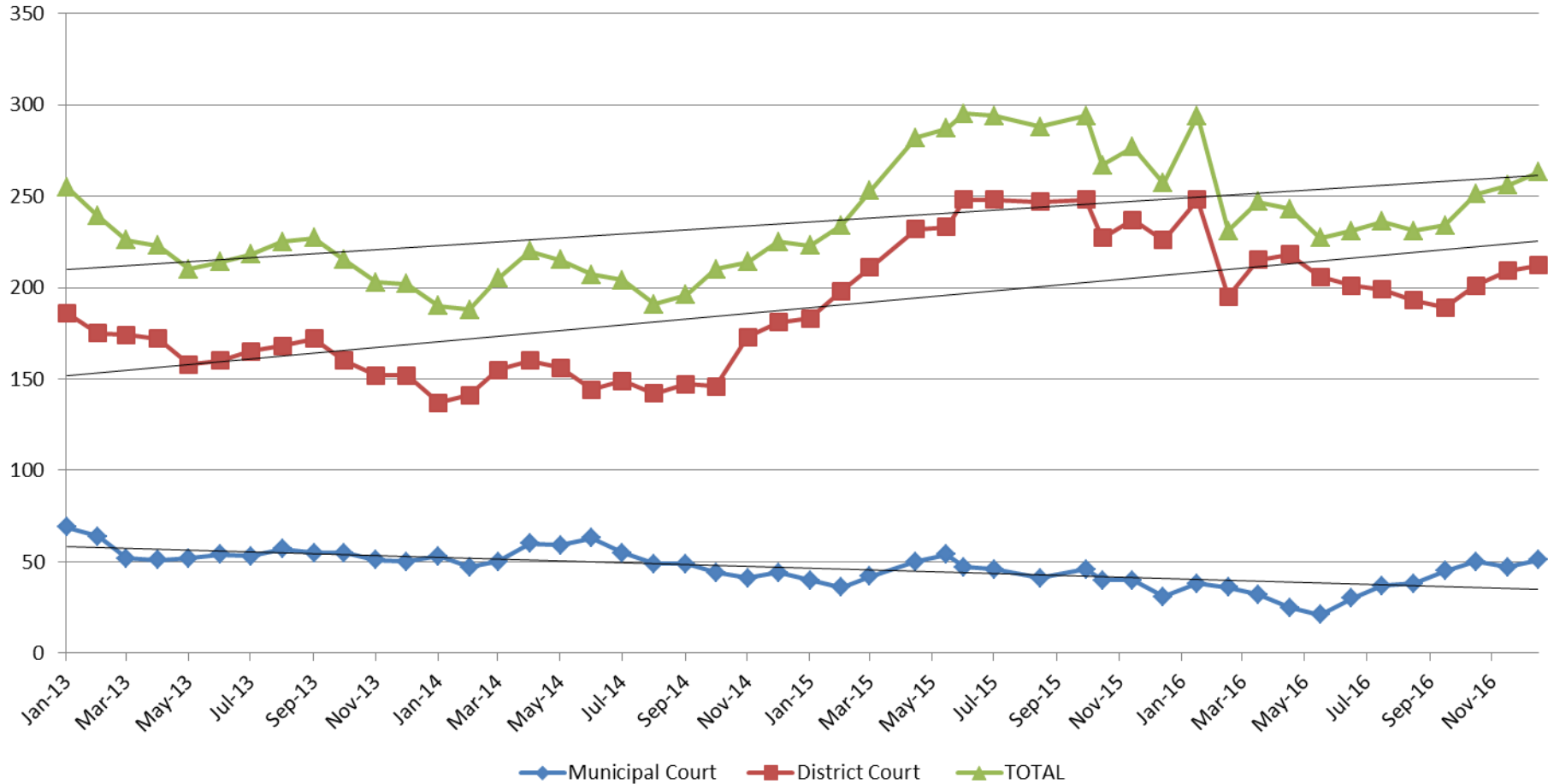


Jail includes individuals in booking, detention, work release and out-of county (combined)

(data obtained from detention facility)



# Pretrial Services Program (PSP) Monthly ADP: January 2013 - Present



<b>December</b>	<b>2013</b>	<b>2014</b>	<b>2015</b>	<b>2016</b>
Municipal Court	50	44	31	51
District Court	152	181	226	212
<b>TOTAL</b>	<b>202</b>	<b>225</b>	<b>257</b>	<b>263</b>

<b>December YTD Avg.</b>	<b>2013</b>	<b>2014</b>	<b>2015</b>	<b>2016</b>
Municipal Court	55	51	43	38
District Court	166	153	228	207
<b>TOTAL</b>	<b>221</b>	<b>205</b>	<b>271</b>	<b>245</b>

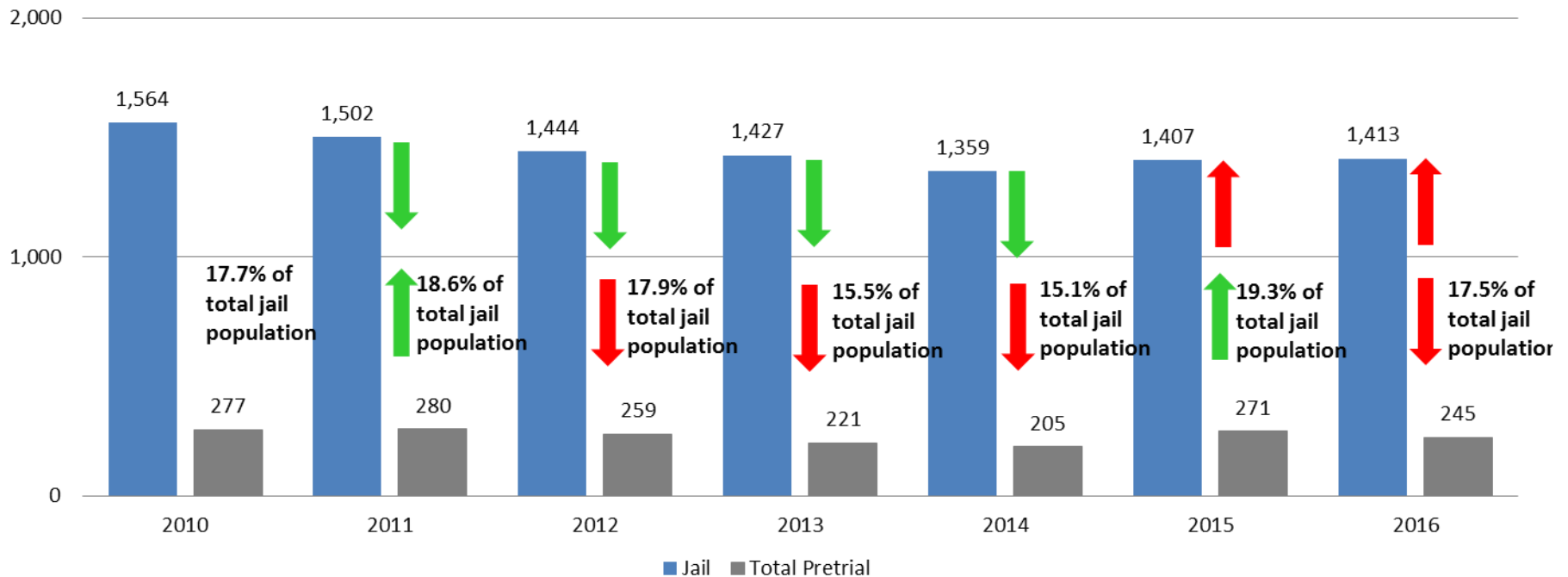


(data obtained from Pretrial Services)



# Correlation: Total & PSP

## Total Annual ADP: 2010 - Present



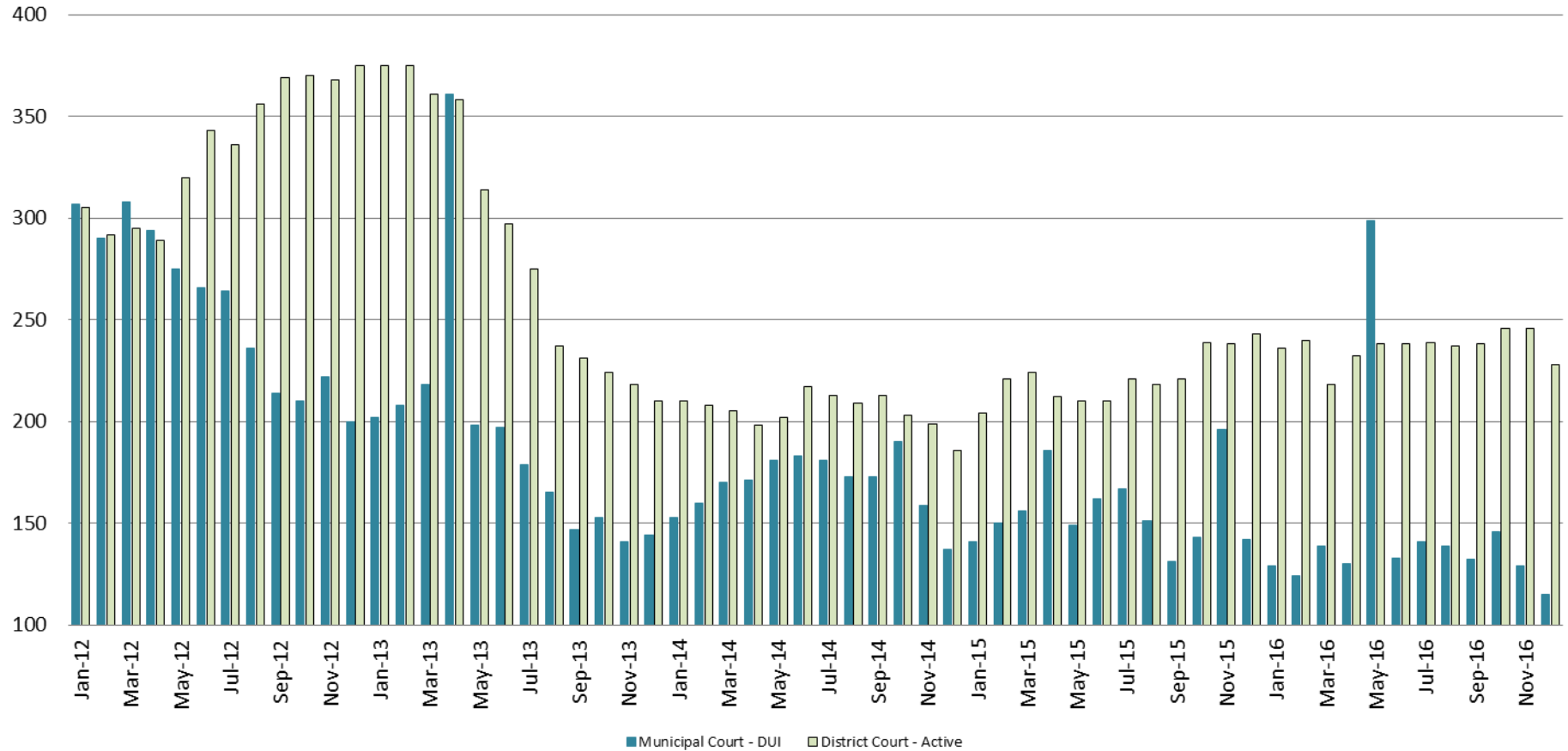
Arrows represent the overall increase/decrease of the population from year to year

Jail includes individuals in booking, detention, work release and out-of county (combined)



# Diversion - Active Caseload

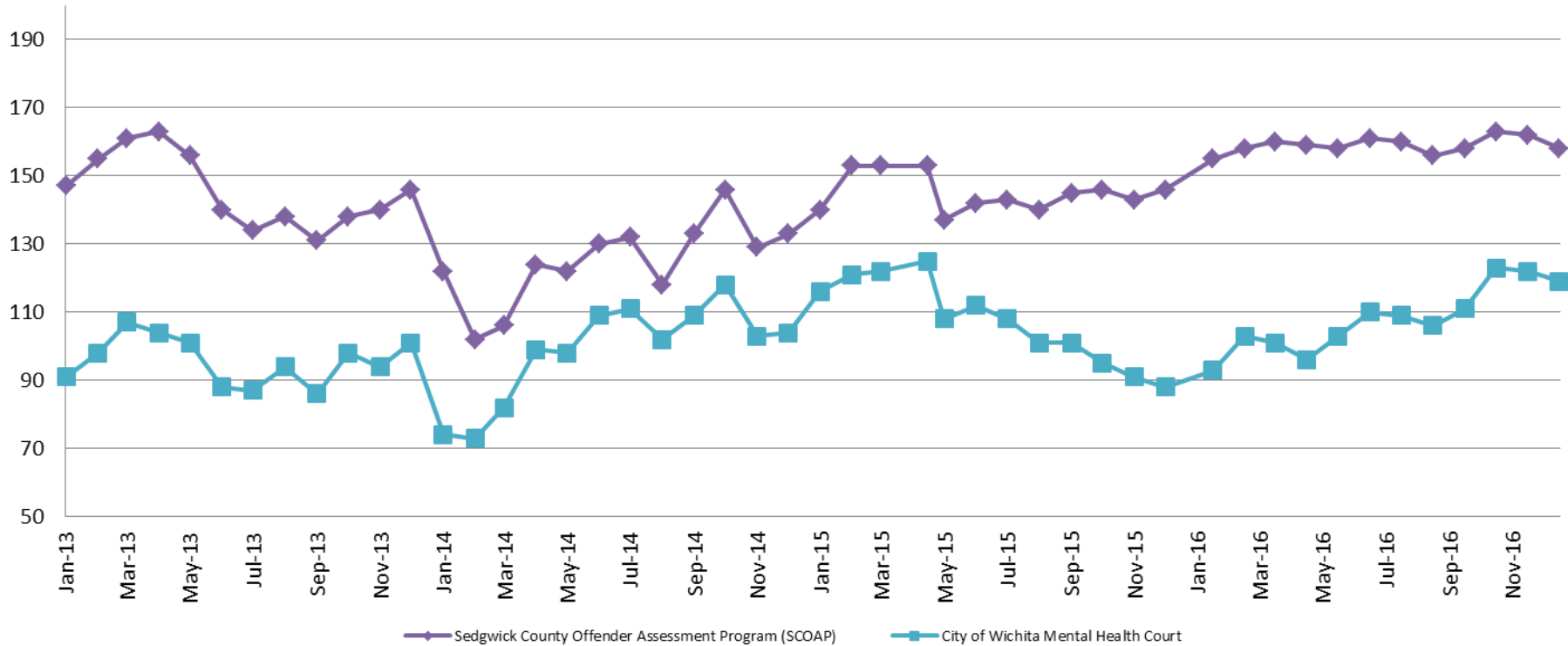
January 2012 - Present



<b>December</b>	<b>2013</b>	<b>2014</b>	<b>2015</b>	<b>2016</b>
Municipal Court- DUI	144	137	142	115
District Court- Active	210	186	243	228

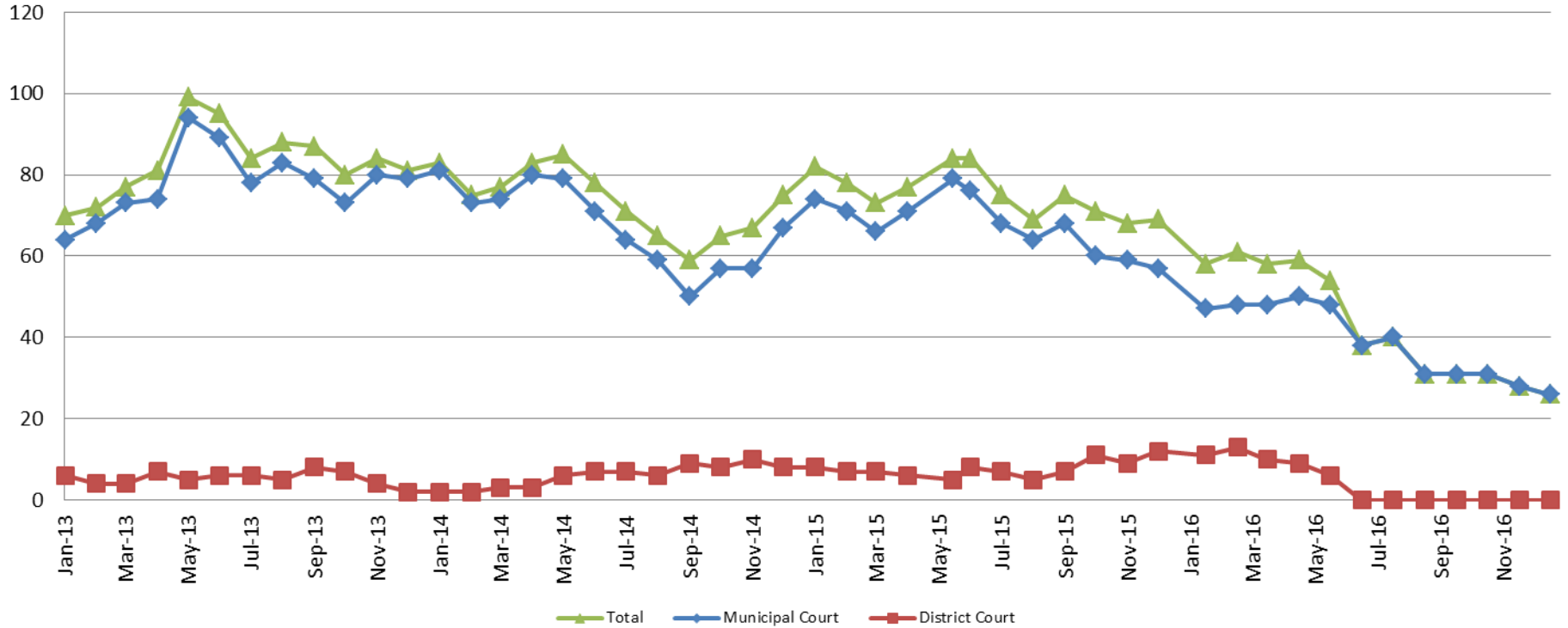
<b>December YTD Avg.</b>	<b>2013</b>	<b>2014</b>	<b>2015</b>	<b>2016</b>
Municipal Court	193	169	156	146
District Court	290	205	222	236

## Mental Health - ADP 2013 - present



<b>December:</b>	<b>2013</b>	<b>2014</b>	<b>2015</b>	<b>2016</b>
SCOAP	146	133	146	158
CoW – MH Court	101	104	88	119
<b>December YTD Avg.</b>	<b>2013</b>	<b>2014</b>	<b>2015</b>	<b>2016</b>
SCOAP	146	125	145	159
CoW – MH Court	96	99	107	108

# Day Reporting - Active Caseload 2013-present

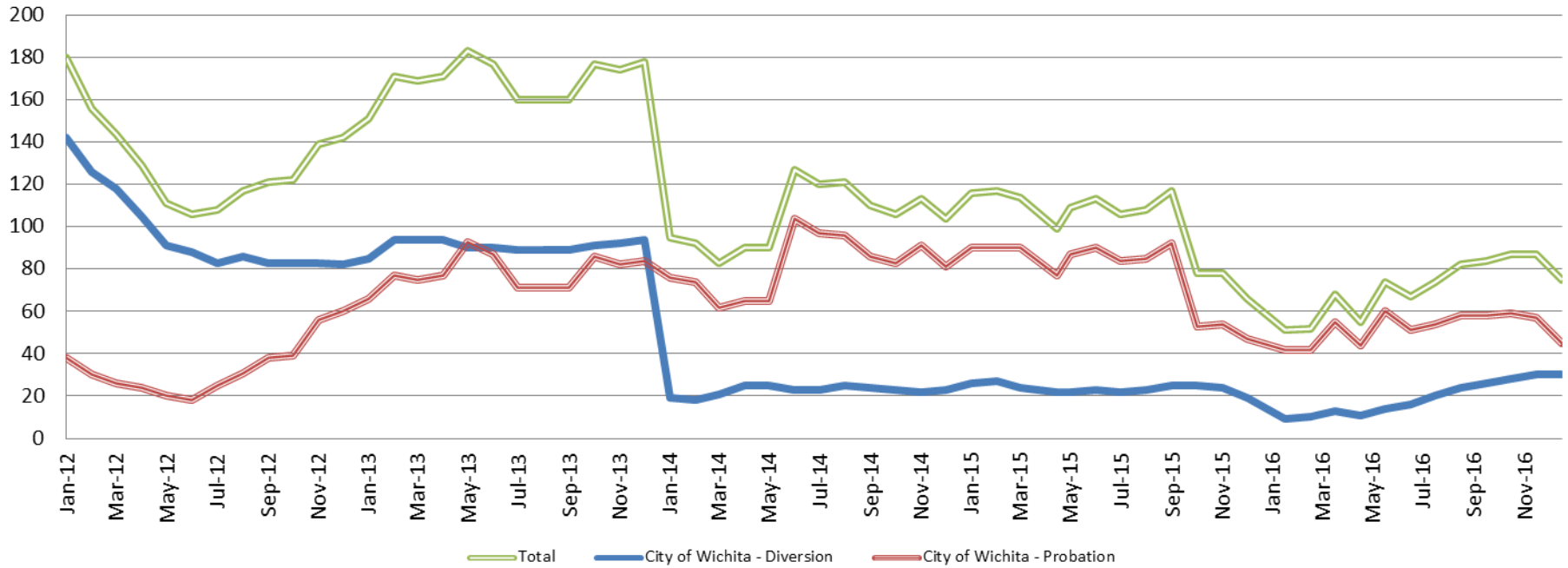


<b>December</b>	<b>2013</b>	<b>2014</b>	<b>2015</b>	<b>2016</b>
Municipal Court	79	67	57	26
District Court	2	8	12	0*
<b>TOTAL</b>	<b>81</b>	<b>75</b>	<b>69</b>	<b>26</b>
<b>December YTD Avg.</b>	<b>2013</b>	<b>2014</b>	<b>2015</b>	<b>2016</b>
Municipal Court	78	68	68	39
District Court	5	6	8	4
<b>TOTAL</b>	<b>83</b>	<b>74</b>	<b>75</b>	<b>43</b>



# Drug Court - City of Wichita

## ADP: 2012 - present



**December - CoW Diversion**

2013 = 94  
 2014 = 23  
 2015 = 19  
 2016 = 30

**December YTD Avg.**

2013 = 91  
 2014 = 23  
 2015 = 24  
 2016 = 19

**December - CoW Probation**

2013 = 84  
 2014 = 81  
 2015 = 47  
 2016 = 45

**December YTD Avg.**

2013 = 78  
 2014 = 82  
 2015 = 78  
 2016 = 52

**December - CoW Total**

2013 = 178  
 2014 = 104  
 2015 = 66  
 2016 = 75

**December YTD Avg.**

2013 = 169  
 2014 = 104  
 2015 = 102  
 2016 = 71

(data obtained from CoW)

## Drug Court - Sedgwick County ADP: 2012 - present



### December - SG CO

**2013 = 98**

**2014 = 87**

**2015 = 115**

**2016 = 103**

### December YTD Avg.

**2013 = 103**

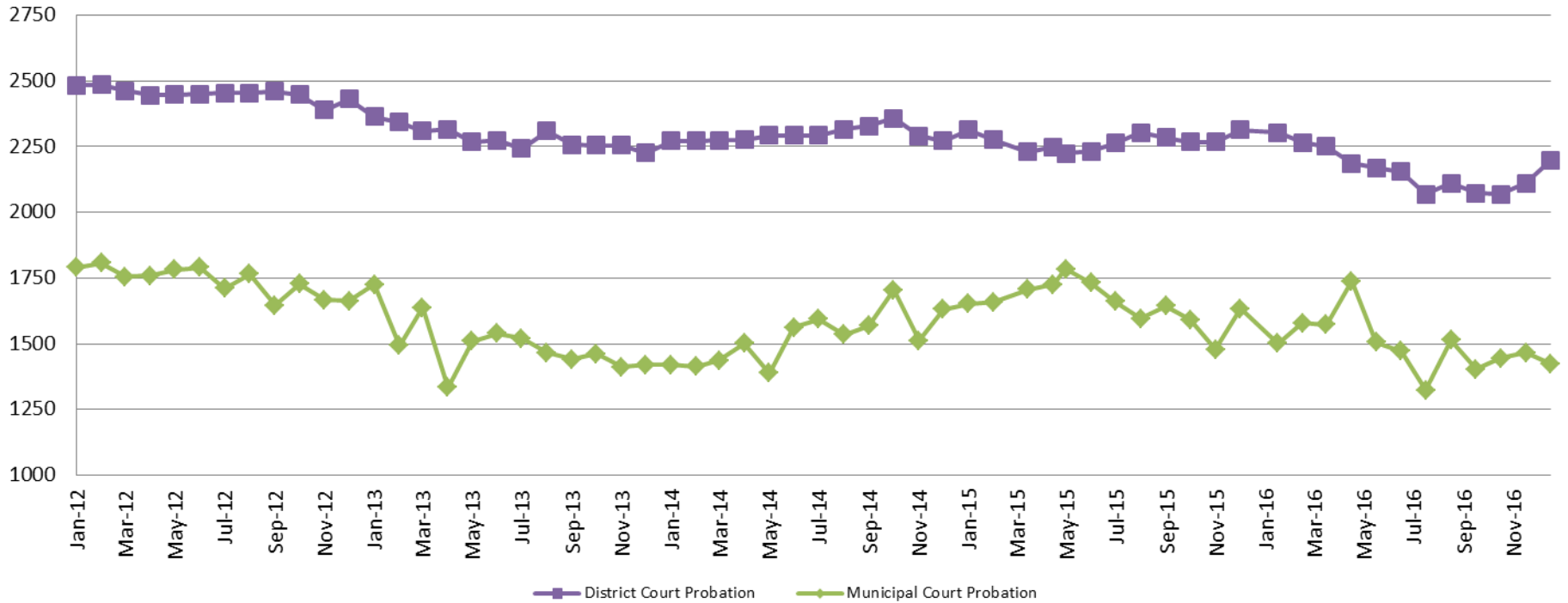
**2014 = 95**

**2015 = 108**

**2016 = 109**

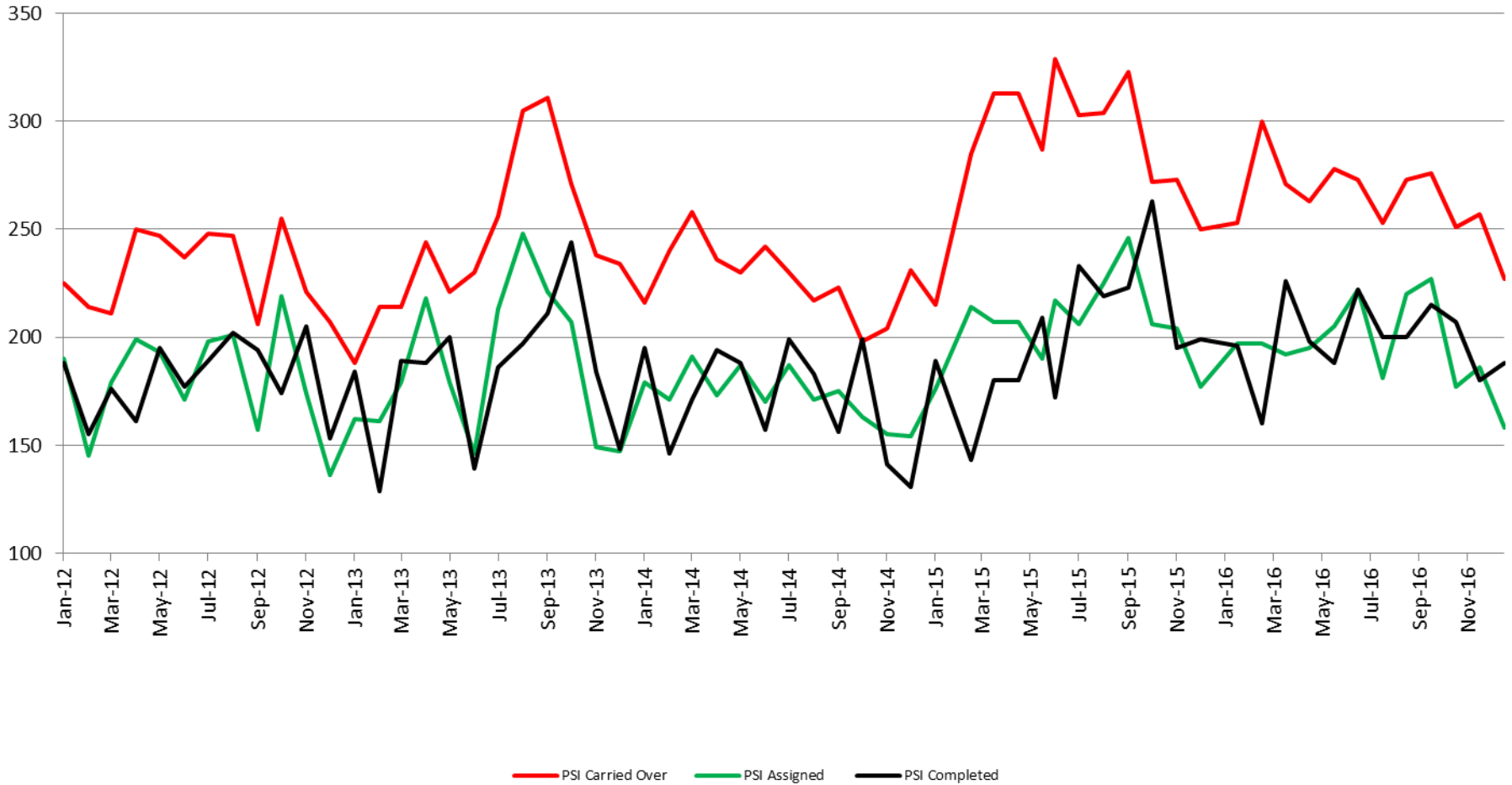


## Probation - Active Caseloads 2012 - present



<b><u>December</u></b>	<b><u>2013</u></b>	<b><u>2014</u></b>	<b><u>2015</u></b>	<b><u>2016</u></b>
District Court	2,226	2,271	2,314	2,196
Municipal Court	1,420	1,632	1,633	1,423
<b><u>December YTD Avg.</u></b>	<b><u>2013</u></b>	<b><u>2014</u></b>	<b><u>2015</u></b>	<b><u>2016</u></b>
District Court	2,285	2,295	2,269	2,163
Municipal Court	1,496	1,523	1,655	1,495

# District Court Probation: Pre-Sentence Investigation 2012 - present

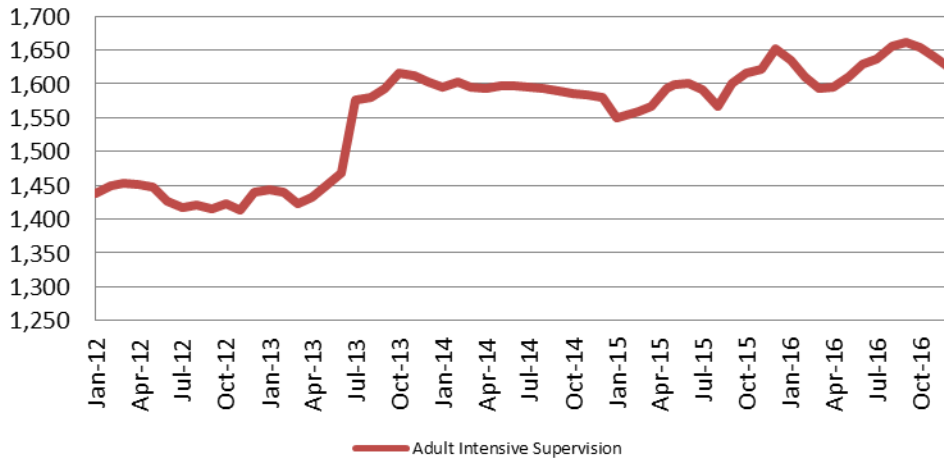


(data obtained from District Court)



# Community Corrections

**Adult Intensive Supervision Probation (AISP) ADP  
2012 - present**

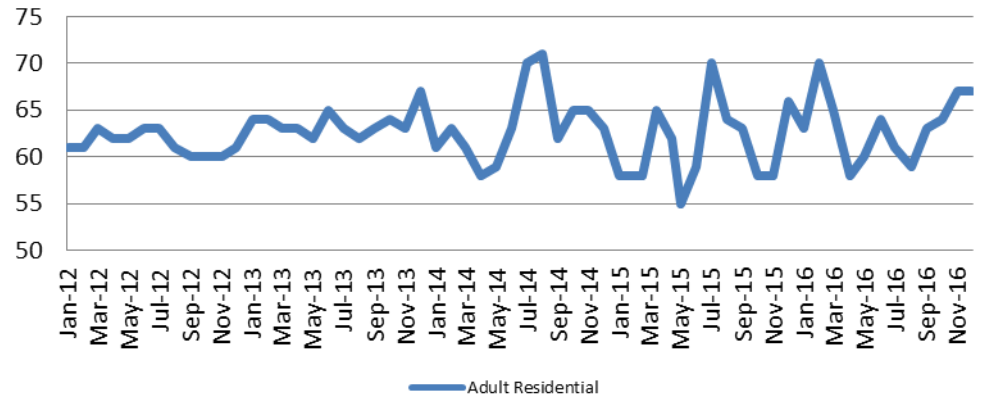


<u>December</u>	<u>December YTD Avg.</u>
2013 = 1,603	2013 = 1,520
2014 = 1,580	2014 = 1,592
2015 = 1,652	2015 = 1,593
2016 = 1,624	2016 = 1,629

(data obtained from SG CO Dept. of Corrections)

\*KDOC changed population count to include drug court, residential and AISP beginning July 2013.

**Adult Residential: ADP  
2012 - present**

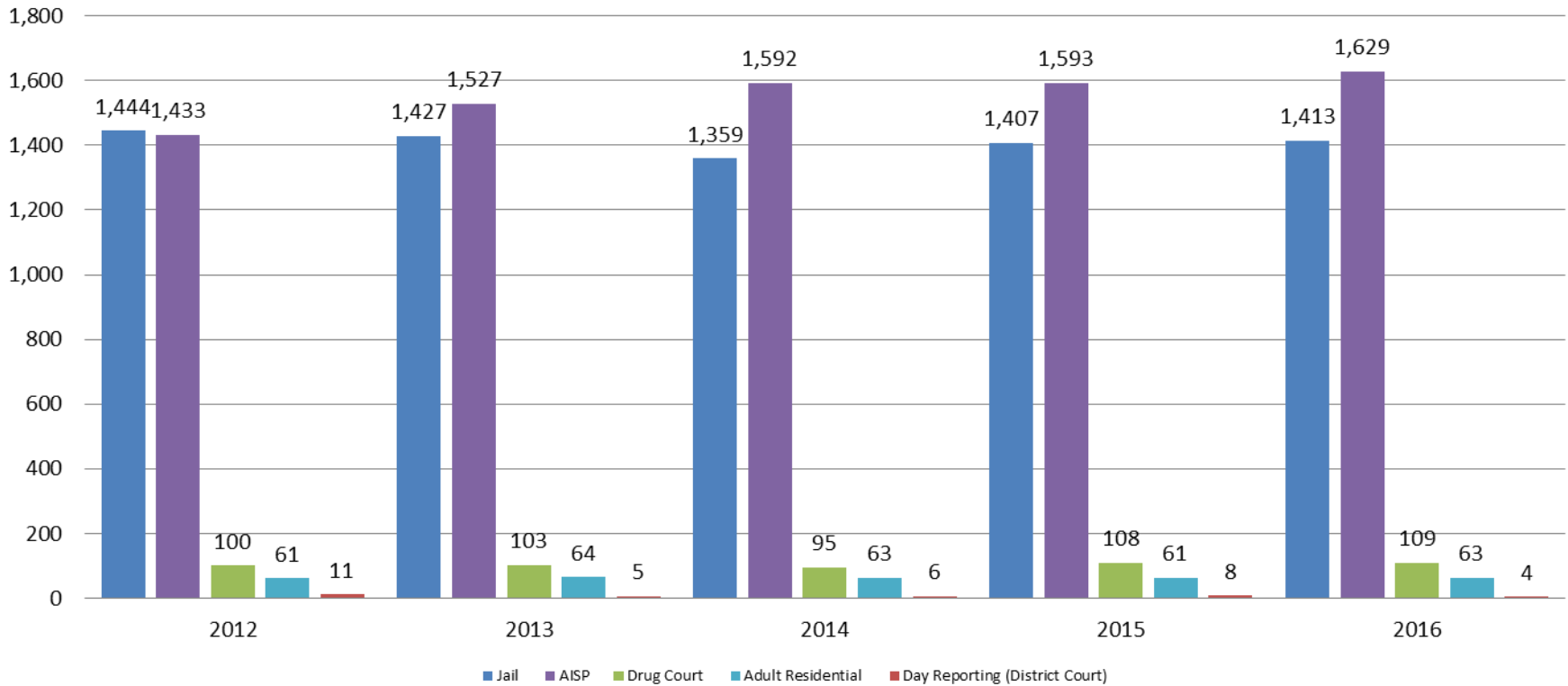


<u>December</u>	<u>December YTD Avg.</u>
2013 = 67	2013 = 64
2014 = 63	2014 = 63
2015 = 66	2015 = 61
2016 = 67	2016 = 63

(data obtained from SG CO Dept. of Corrections)

# Correlation: Total & Sedgwick County Programs (Adult)

## Total Annual ADP: 2012 - Present

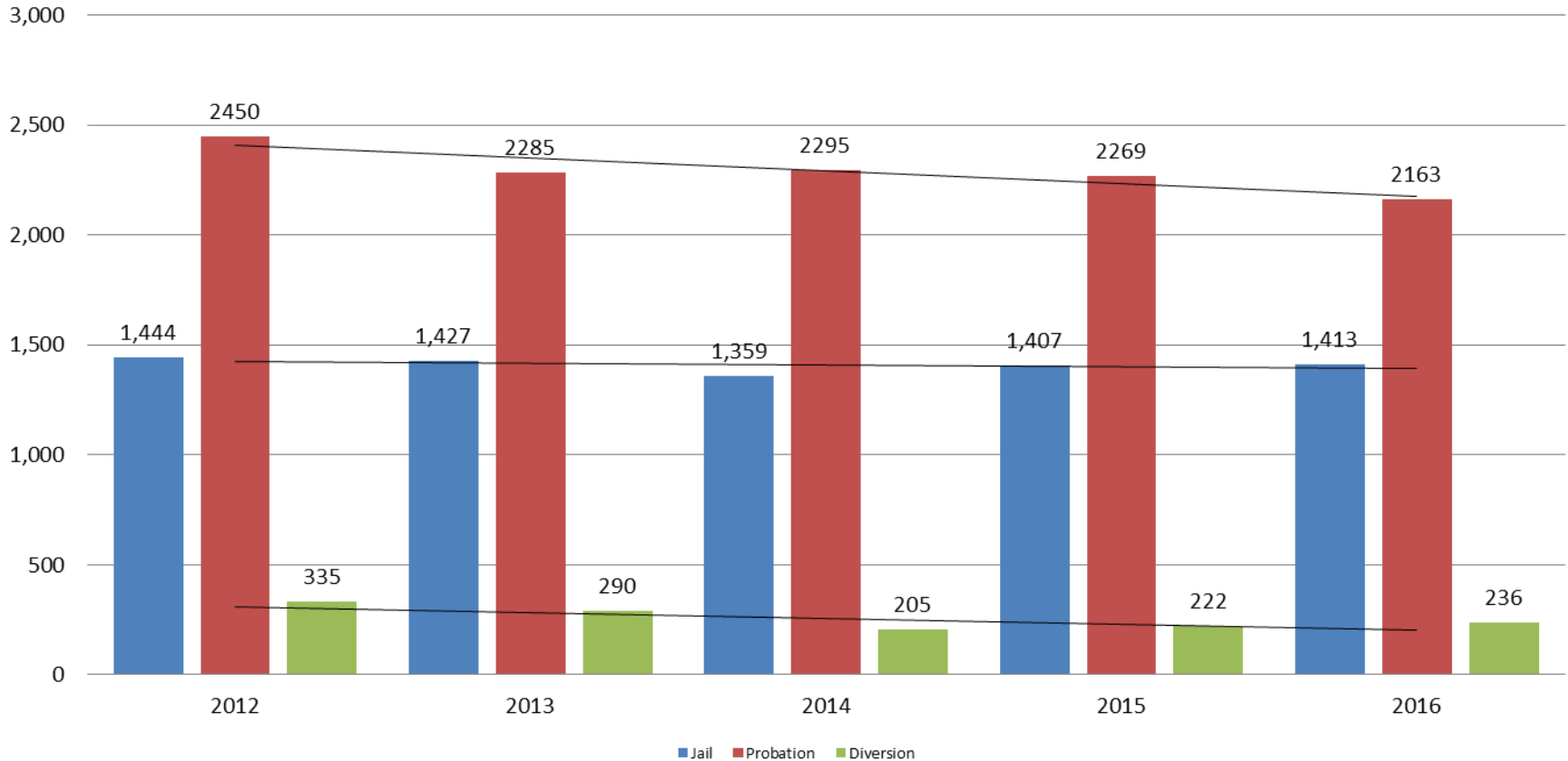


Jail includes individuals in booking, detention, work release and out-of county (combined)

(data obtained from detention facility, SG Dept. of Corrections, Pretrial Services, & CoW)

# Correlation: Total & District Court Programs

## Total Annual ADP: 2012 - Present

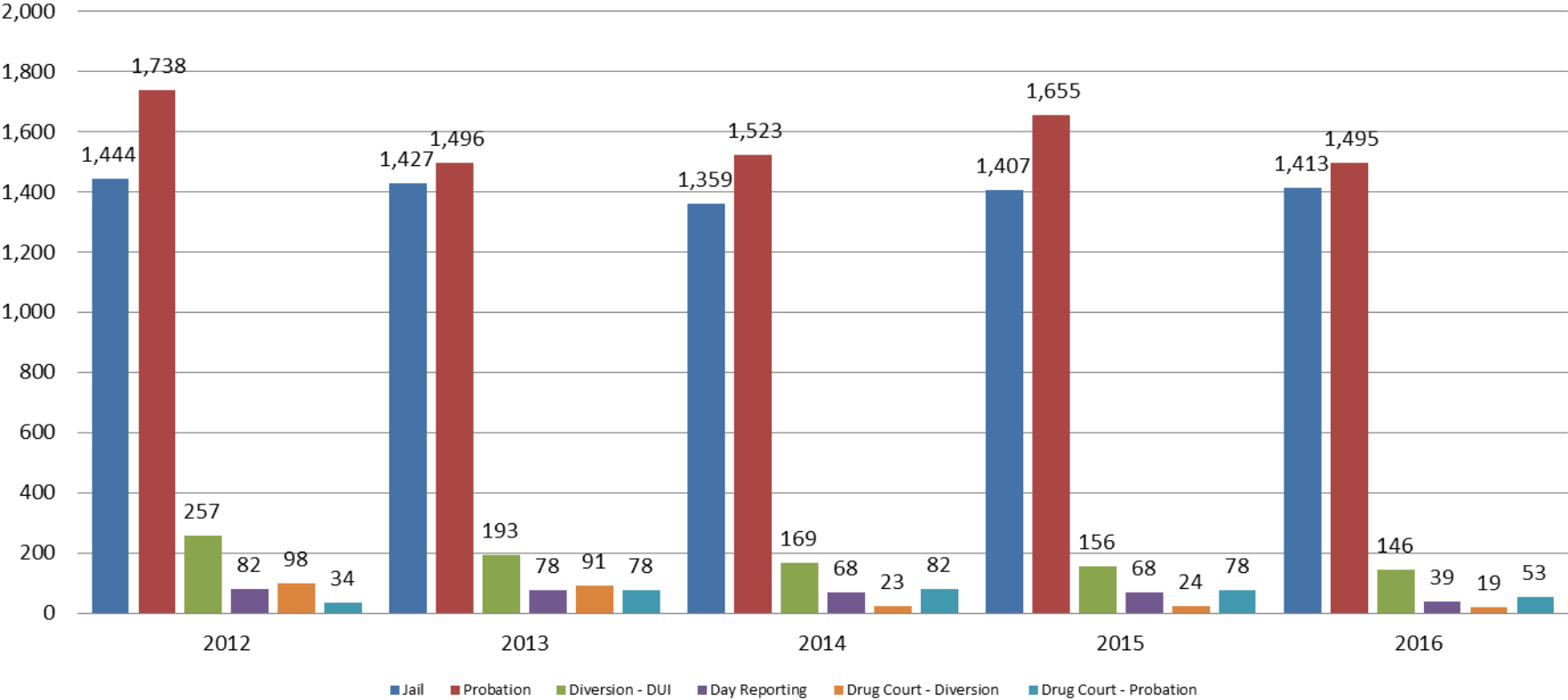


Jail includes individuals in booking, detention, work release and out-of county (combined)



# Correlation: Total & City of Wichita / Municipal Court Programs

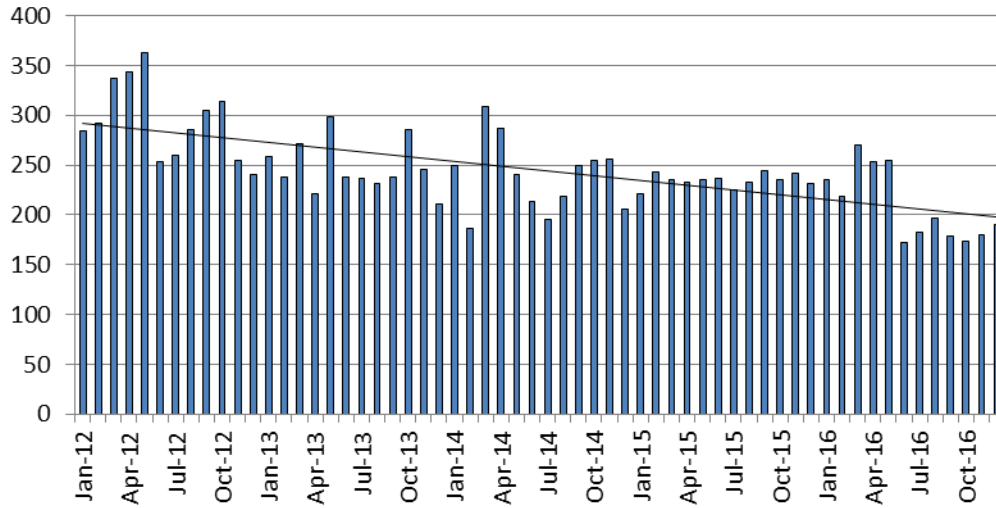
**Total Annual ADP: 2012 - present**



Jail includes individuals in booking, detention, work release and out-of county (combined)

# Juvenile

## JIAC Intakes: 2012 - present



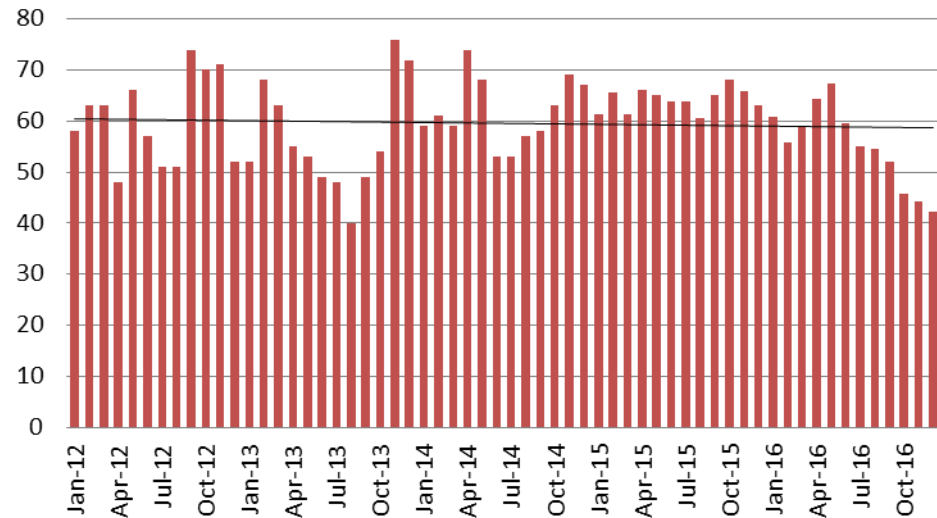
<u>December</u>	<u>December YTD Average</u>
2013 = 211	2013 = 248
2014 = 206	2014 = 239
2015 = 232	2015 = 235
2016 = 190	2016 = 209

(data obtained from SG CO Dept. of Corrections)

<u>December</u>	<u>December YTD Avg.</u>
2013 = 72	2013 = 57
2014 = 67	2014 = 62
2015 = 63	2015 = 64
2016 = 42	2016 = 55

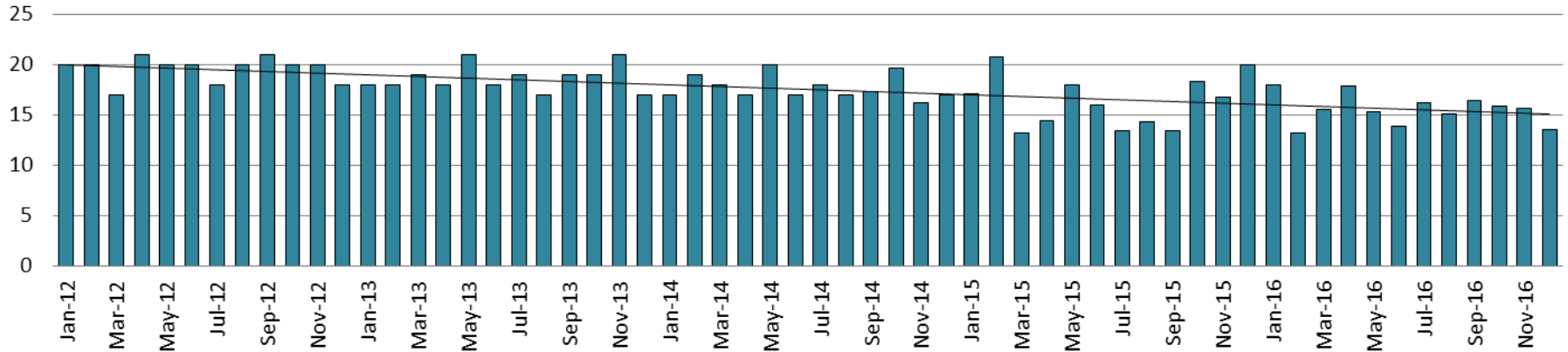
(data obtained from SG CO Dept. of Corrections)

## JDF ADP: 2012 - present

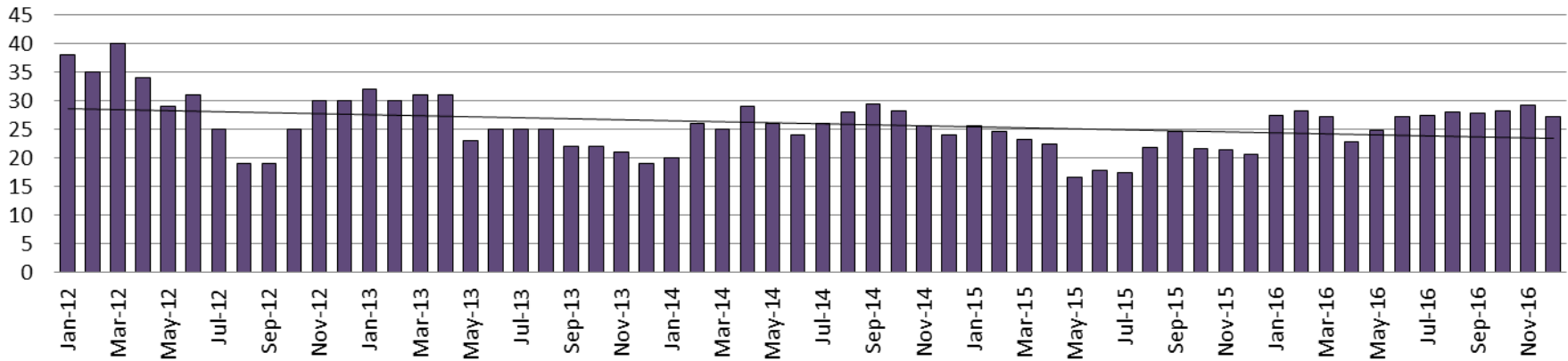


# Juvenile Detention Alternatives

## Juvenile Residential Facility (JRF) ADP: 2012 - present

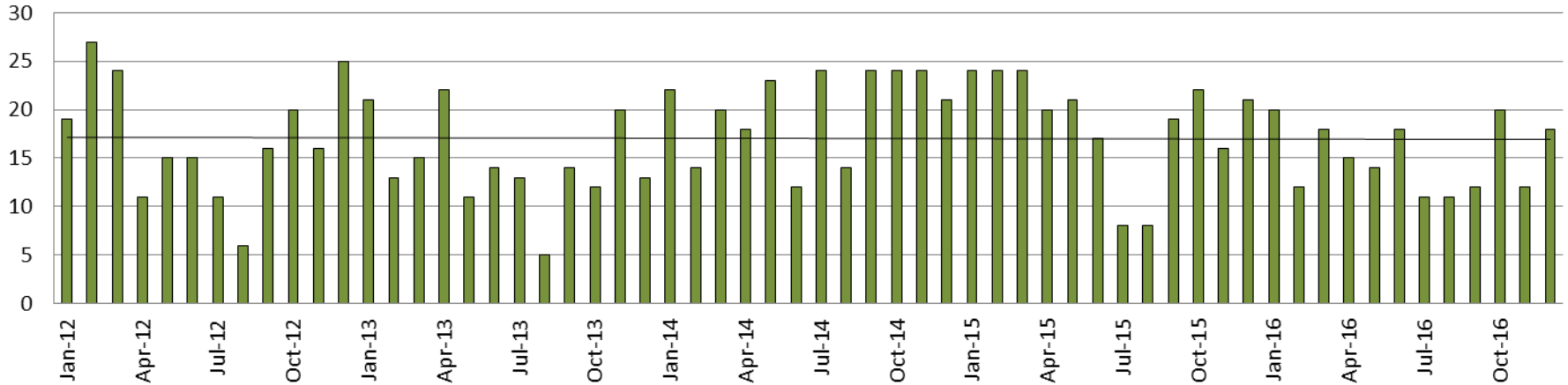


## Home-Based Supervision ADP: 2012 - present

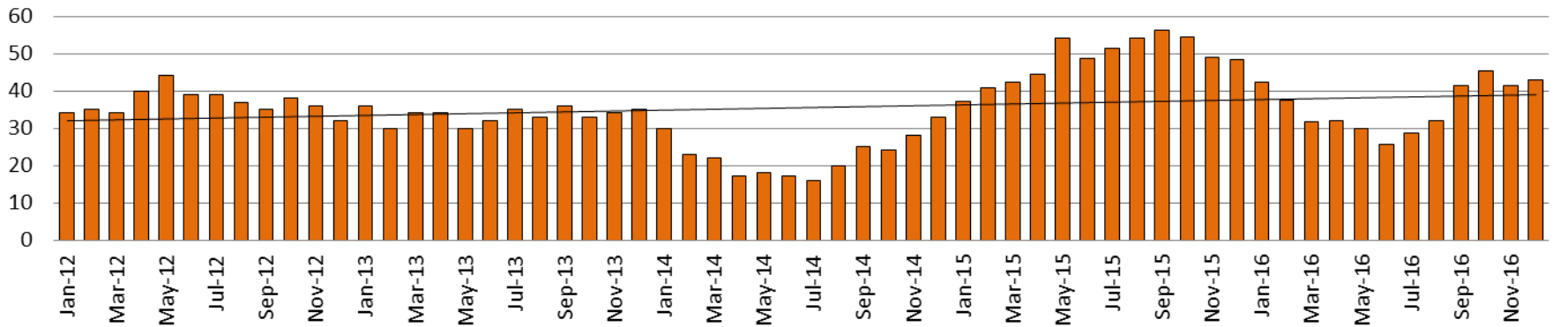


# Juvenile Detention Alternatives

## Weekend Alternative Detention Program 2012 - present



## Detention Advocacy Case Management Services ADP: 2012 - present



# Juvenile Detention Services

<b>December ADP</b>	<b>2013</b>	<b>2014</b>	<b>2015</b>	<b>2016</b>
Juvenile Detention Facility	72	67	63	42
Juvenile Residential Facility	17	17	20	14
Home Based Supervision	19	24	21	27
Detention Advocacy Case Management Services	35	33	48	43
Weekend Alternative Detention Program (total)	13	21	21	18

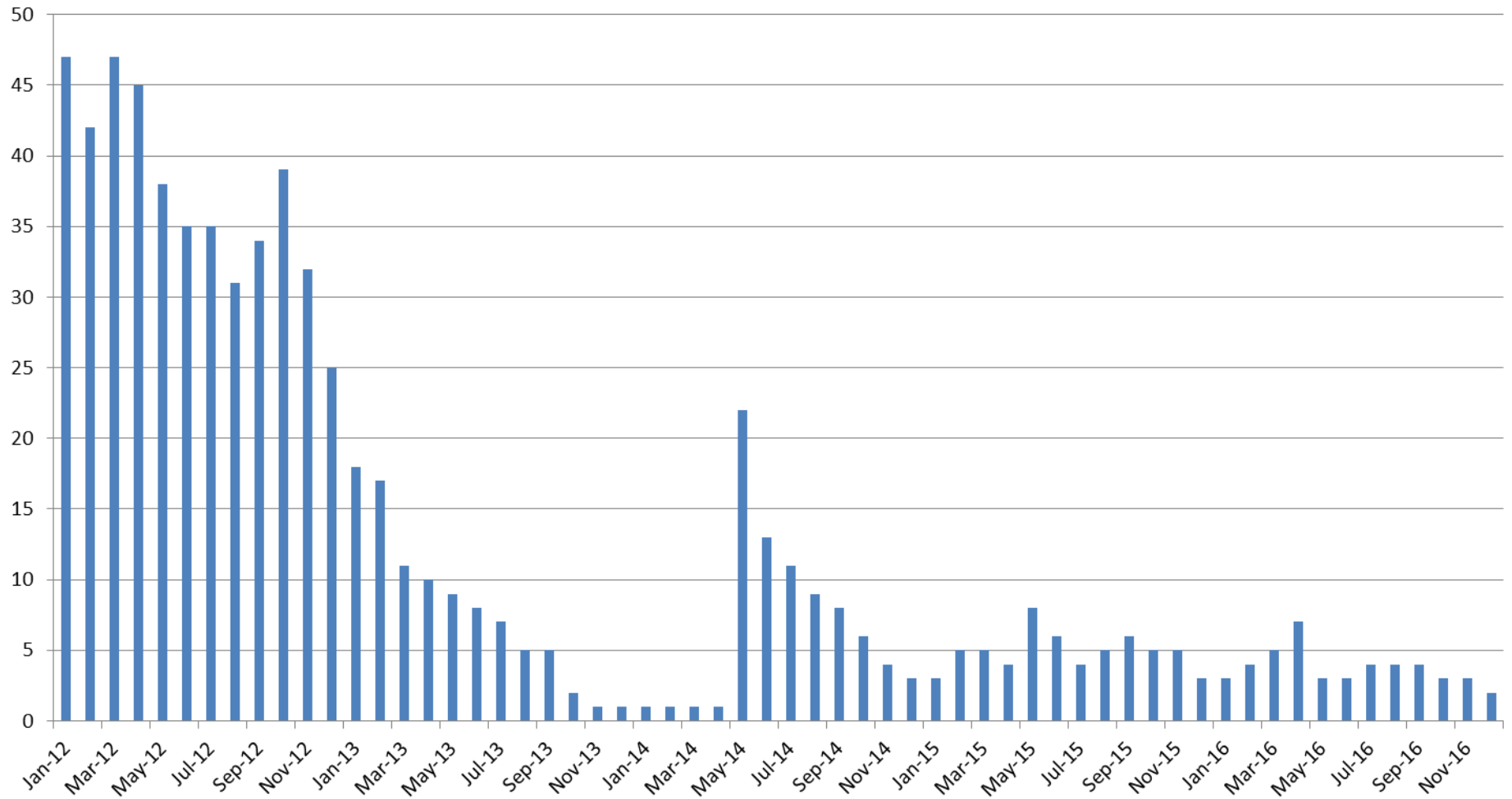
<b>December YTD AVERAGE</b>	<b>2013</b>	<b>2014</b>	<b>2015</b>	<b>2016</b>
Juvenile Detention Facility	57	62	64	55
Juvenile Residential Facility	19	18	16	16
Home Based Supervision	26	26	21	27
Detention Advocacy Case Management Services	34	23	48	36
Weekend Alternative Detention Program	14	20	19	15





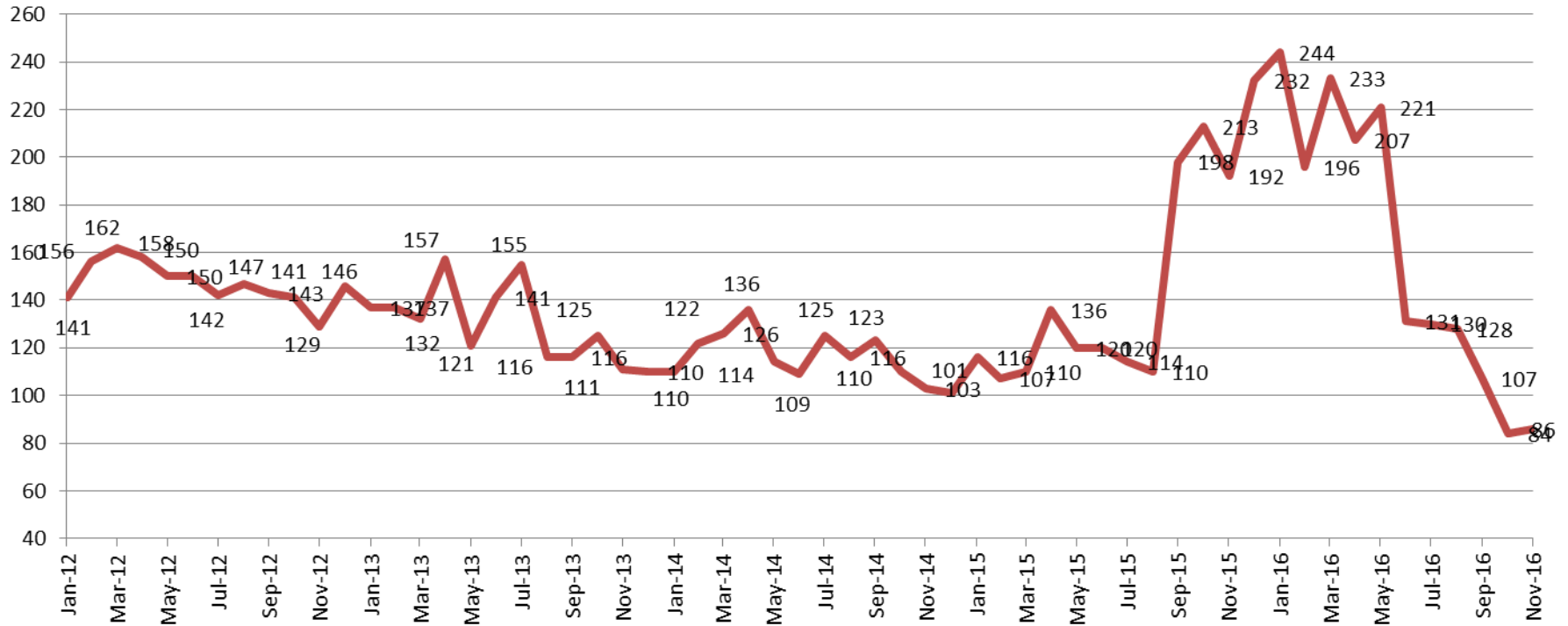
# Monthly Jail Snapshot: November 30, 2016

## BICE Holds 2012-Present



# Monthly Jail Snapshot: November 30, 2016

## Felony Commitments: February 2012 - present



### December:

2012 = 129

2015 = 192

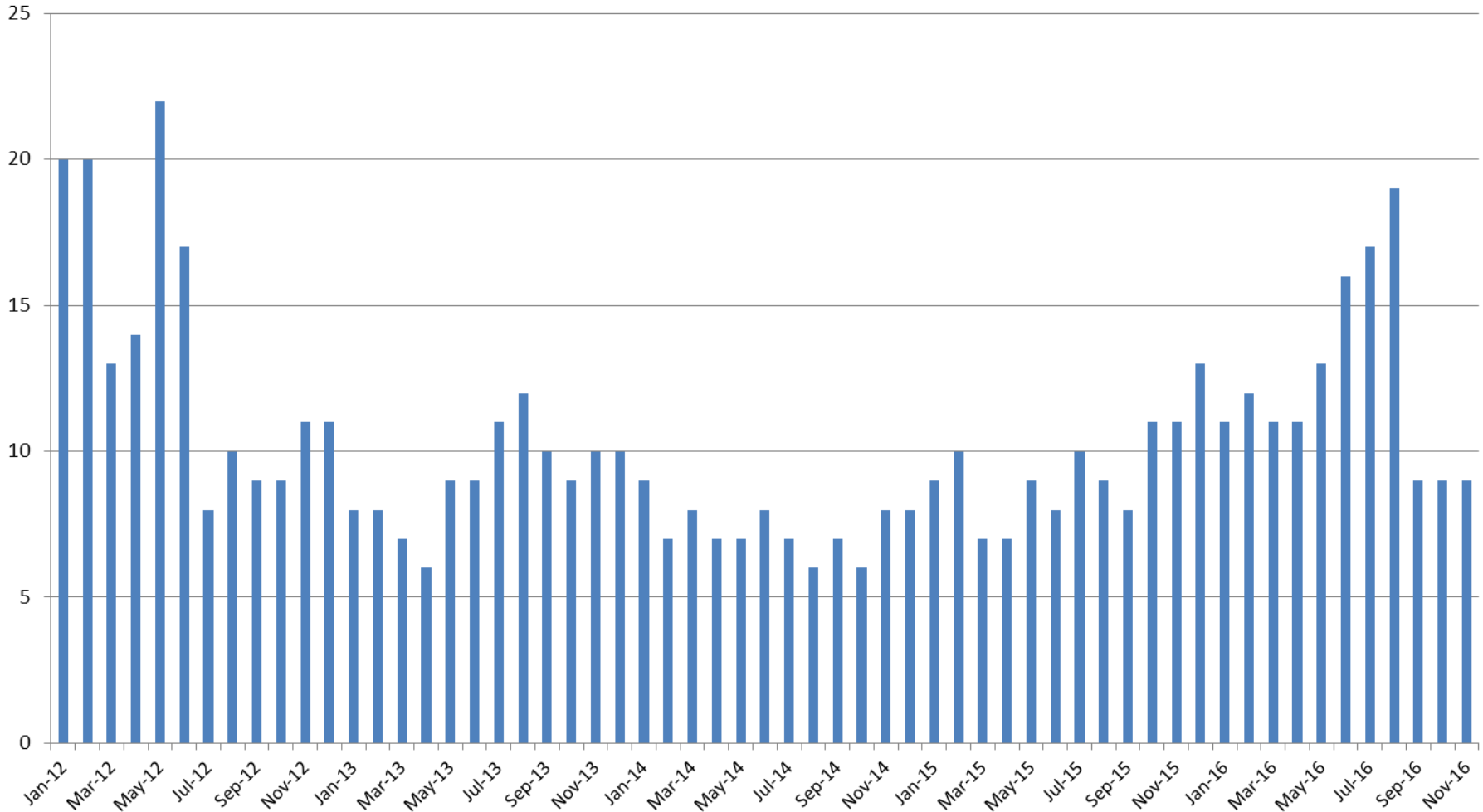
2013 = 111

2016 = 86

2014 = 103

(data obtained from SG CO DIO)

## Journal Entry Completion (Average Days) January 2013-Present



This data is always reported a month behind

