

Criminal Justice Coordinating Council

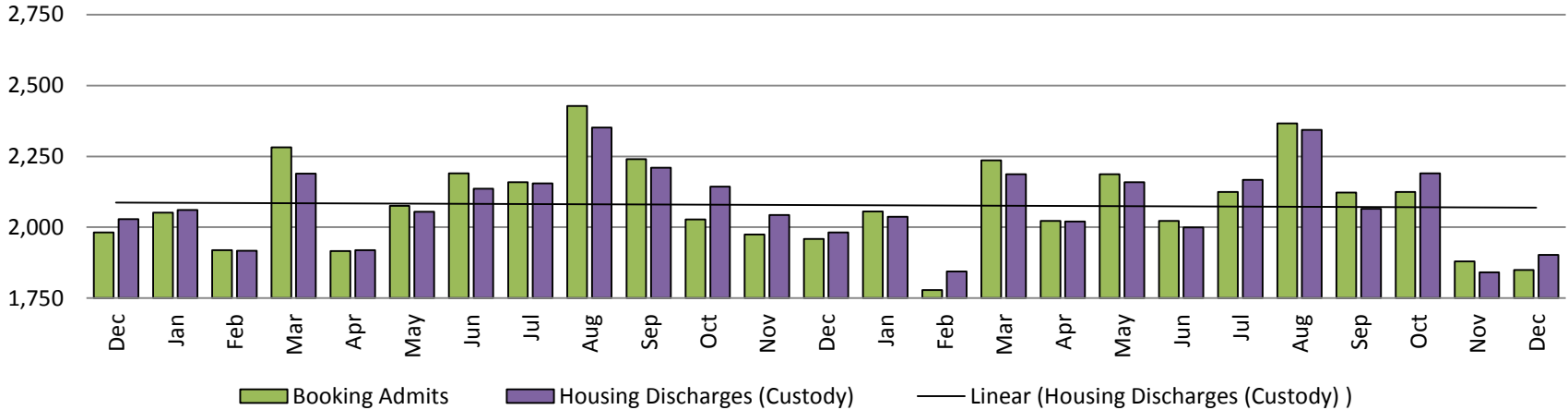
Population Report & Program Trends

January 2019

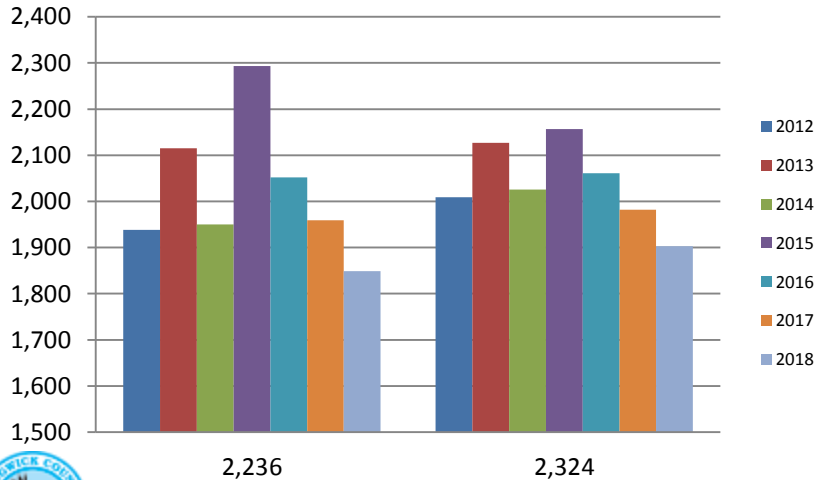


Detention Facility

Booking Admits & Housing Discharges from Custody December 2016-Present

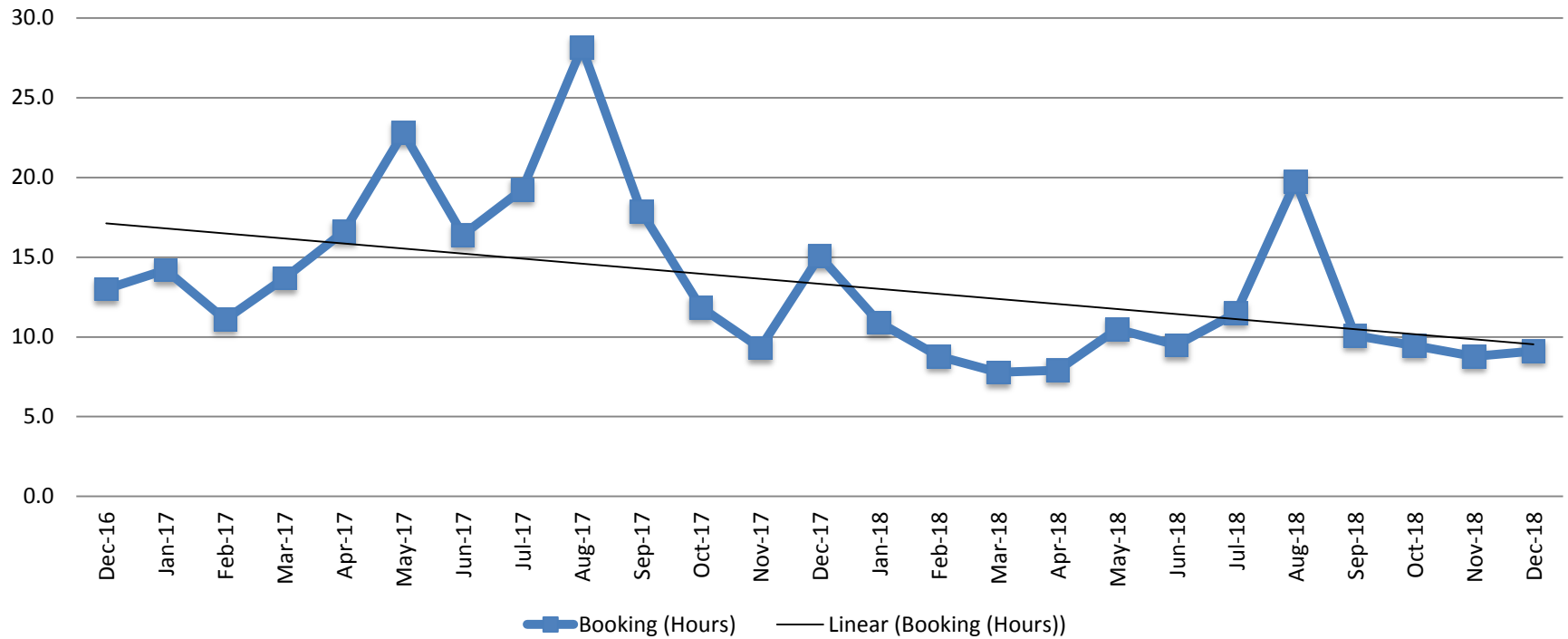


Bookings Year over Year: Month of December



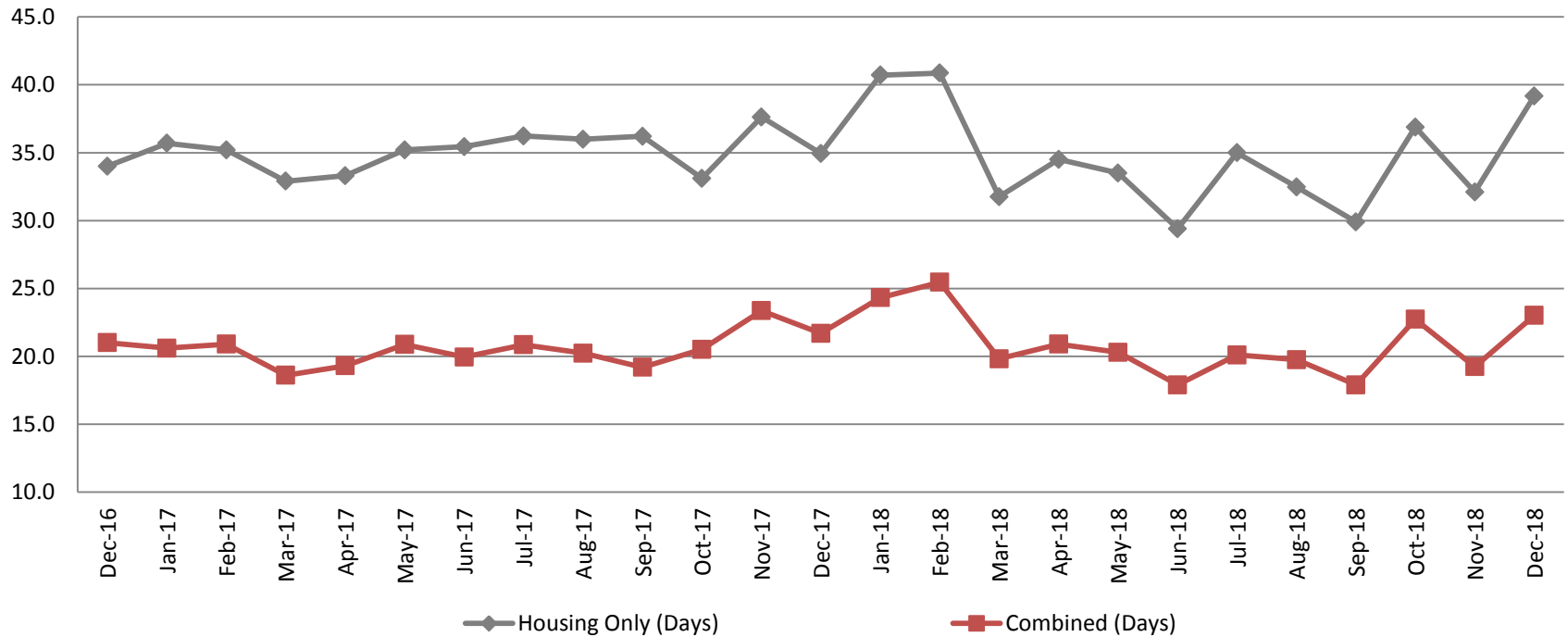
Bookings December	Housing Discharges December
2016: 1,982	2016: 2,029
2017: 1,959	2017: 1,982
2018: 1,849	2018: 1,903

Average Length of Stay: Booking (Hours) December 2016 - Present



December	December YTD Average
2016: 13.0	2016: 18.2
2017: 15.1	2017: 16.4
2018: 9.1	2018: 10.3

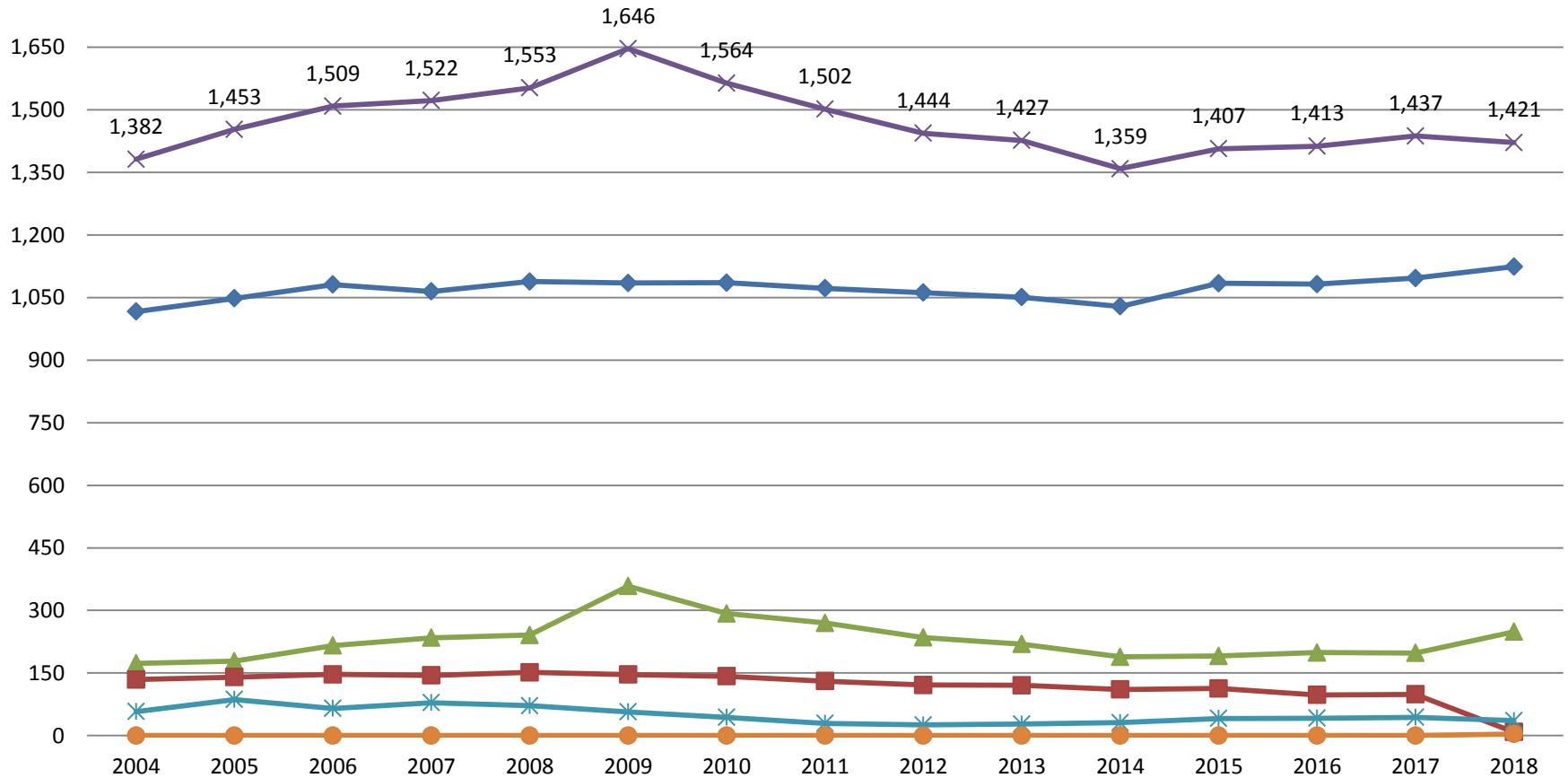
Average Length of Stay: Housing & Combined (Days) December 2016 - Present



Month Year	Housing Only	Housing YTD AVG	Combined Days	Combined YTD AVG
December 2016	34.0	34.8	21	20
December 2017	34.9	35.2	21.7	20.5
December 2018	39.2	34.7	23	21

Jail: Annual Average Daily Population (ADP)

TRENDS: Booking, Detention, Work Release, & Out of County
Annual ADP: 2004 - present

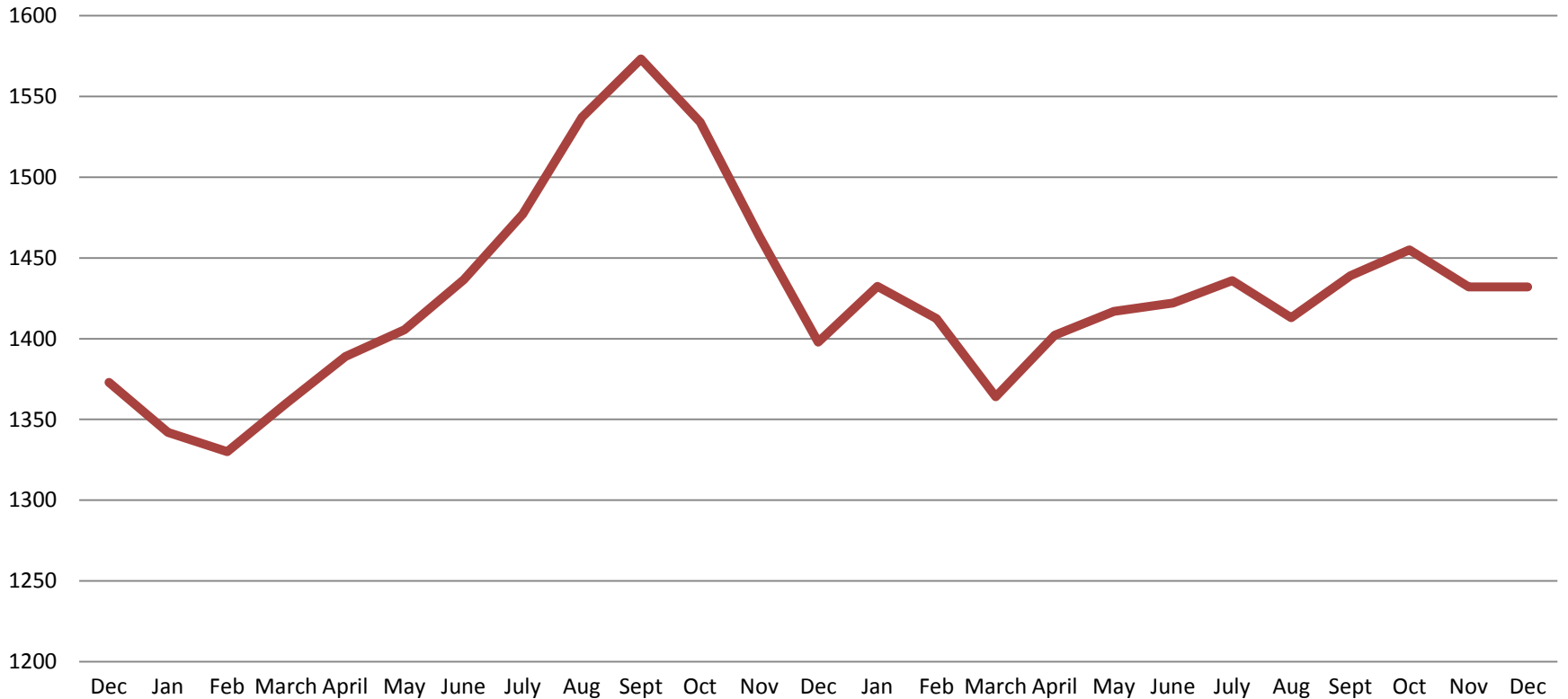


✕ Total
 ◆ Detention ADP
 ▲ Out of County ADP
 ■ Work Release ADP
 * Booking ADP
 ● Annex ADP



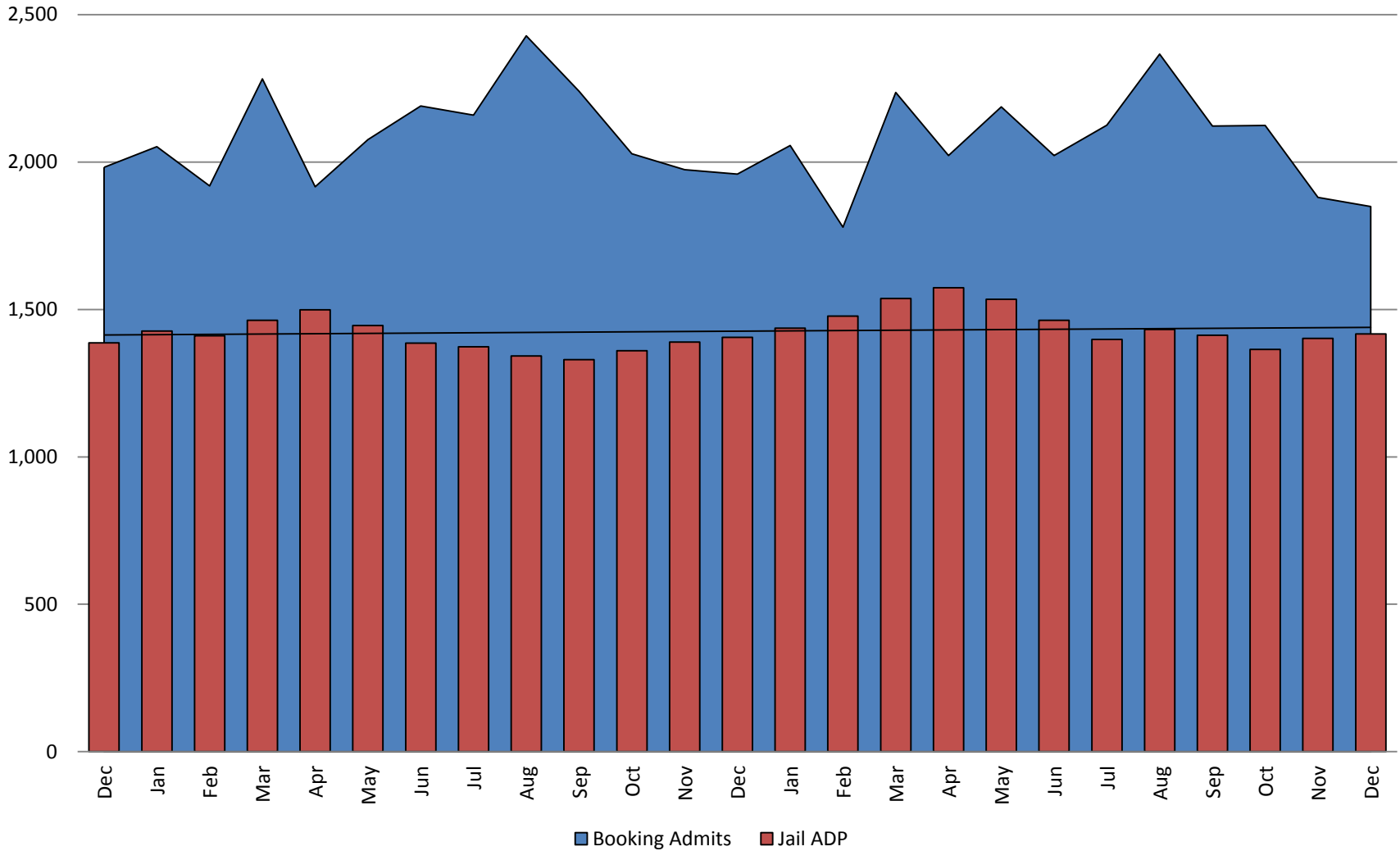
*Beginning January 2018, Work Release program began transfer to Division of Correction (data obtained from detention facility)

TOTAL MONTHLY ADP: JAIL (Booking, Detention Facility, Work Release, & Out of County) December 2016 - present



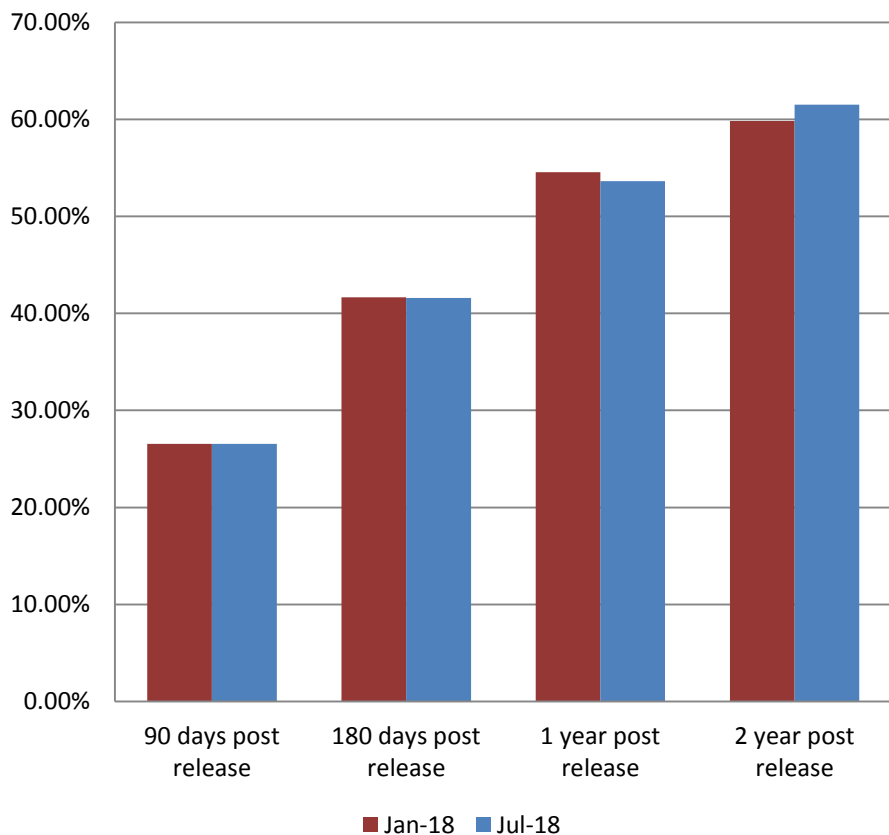
December 2016	December 2017	December 2018
1,373	1,398	1,432

Booking Admits & Total Monthly ADP (Jail): December 2016 - present



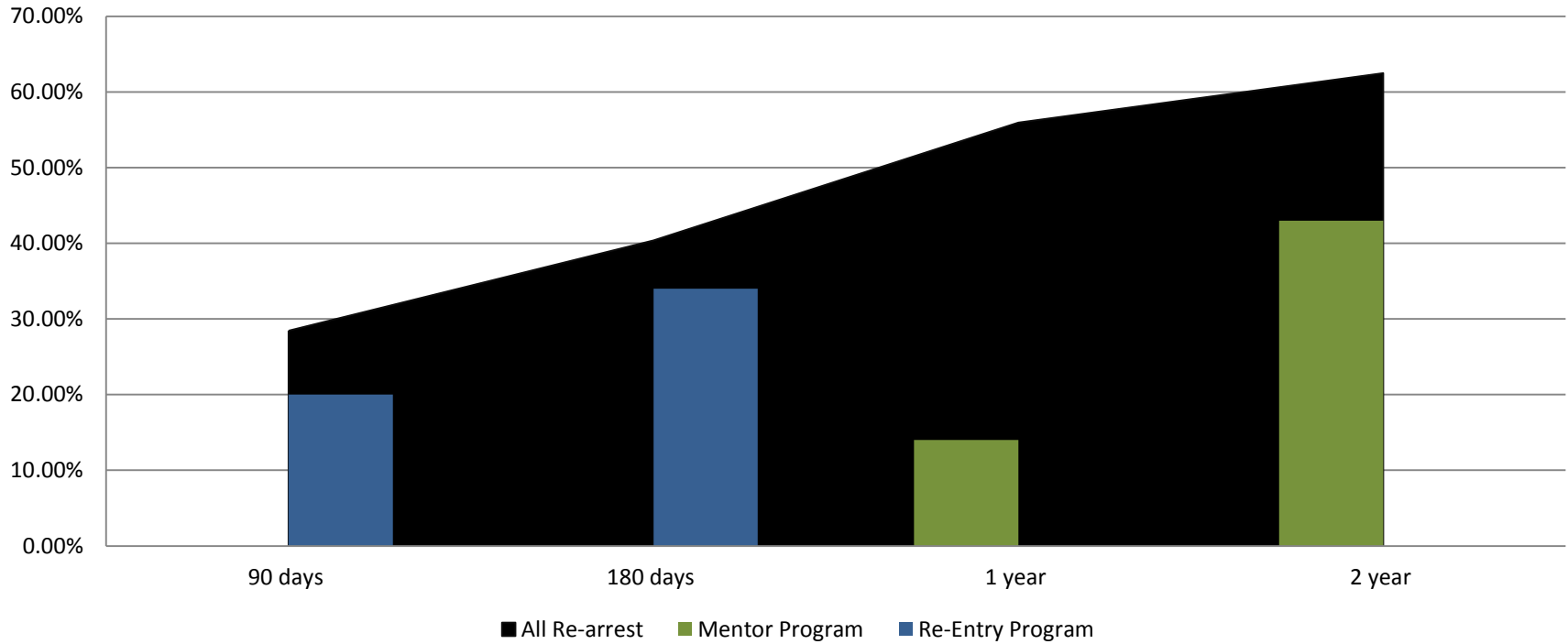
Jail includes individuals in booking, detention, work release and out-of county (combined)
(data obtained from detention facility)

Percent of released inmates rearrested January & July comparison



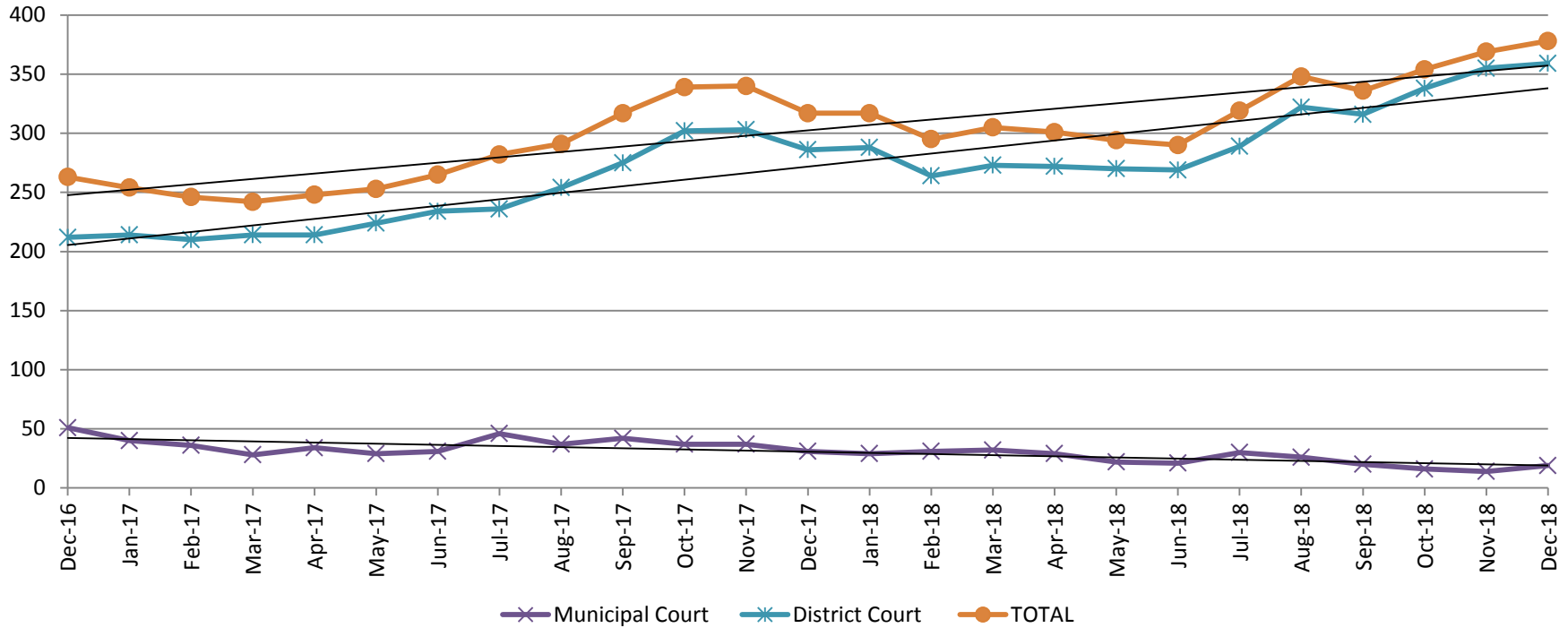
Month 2018	90 Days	180 Days	1 Year	2 Years
Jan	26.55%	41.67%	54.57%	59.84%
Feb	27.39%	40.22%	54.02%	61.03%
March	28.00%	41.08%	51.69%	60.03%
April	28.13%	39.41%	52.82%	62.93%
May	29.80%	41.88%	52.18%	62.81%
June	27.71%	41.92%	54.94%	62.07%
July	26.55%	41.60%	53.64%	61.50%
August	27.44%	44.09%	52.03%	63.51%
Sept	29.94%	41.51%	56.10%	63.95%
Oct	28.74%	40.13%	53.83%	61.47%
Nov	28.45%	40.38%	55.95%	62.19%
Dec	27.46%	42.99%	54.27%	62.46%

Recidivism by Programs December 2018



December 2018	90 Days	180 Days	1 year	2 years
All Re-arrests	27.46%	42.99%	54.27%	62.46%
Mentor Program	0%	0%	14%	43%
Re-Entry Program	20%	34%	N/A	N/A

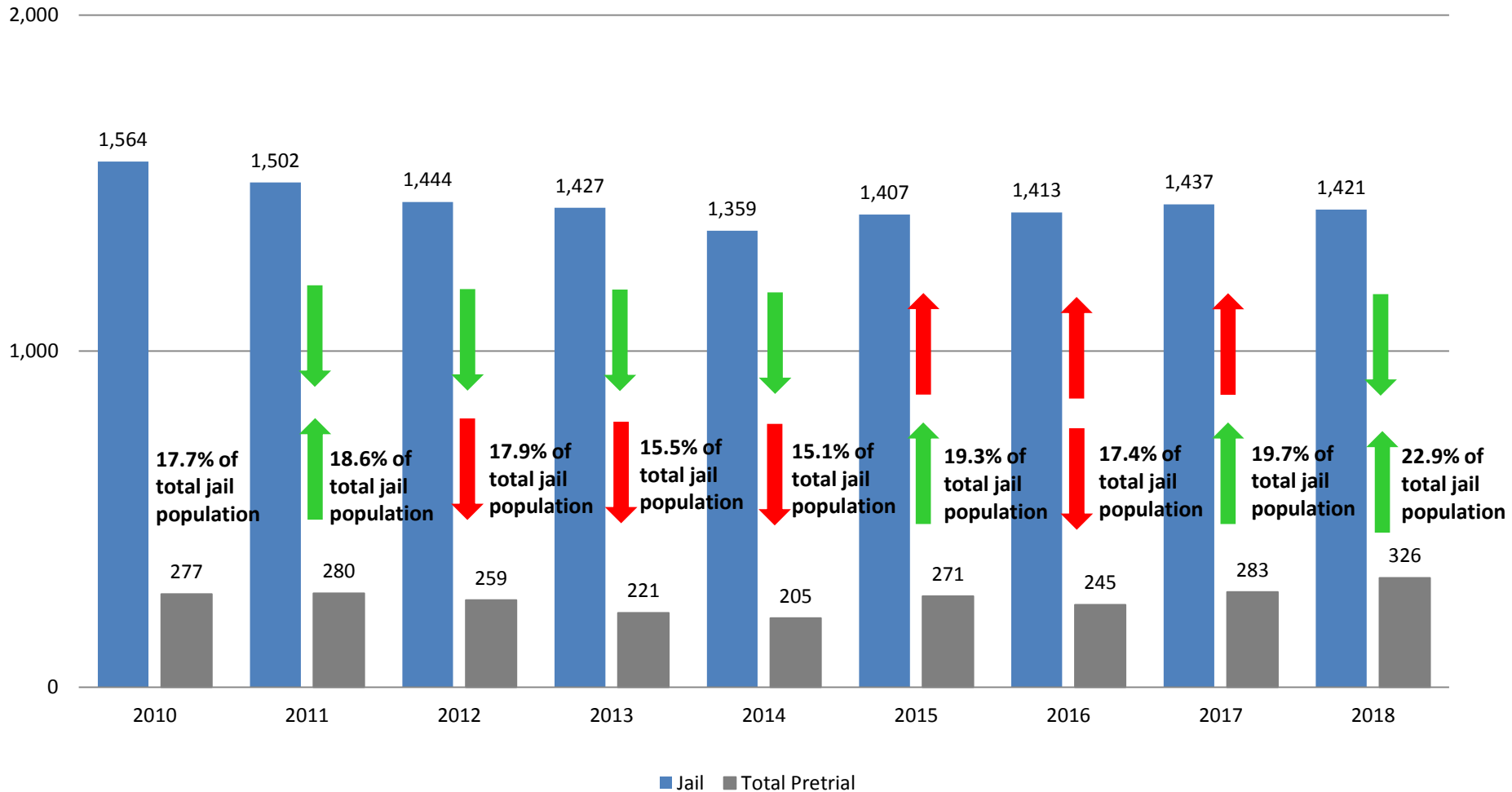
Pretrial Services Program (PSP) Monthly ADP: December 2016 - Present



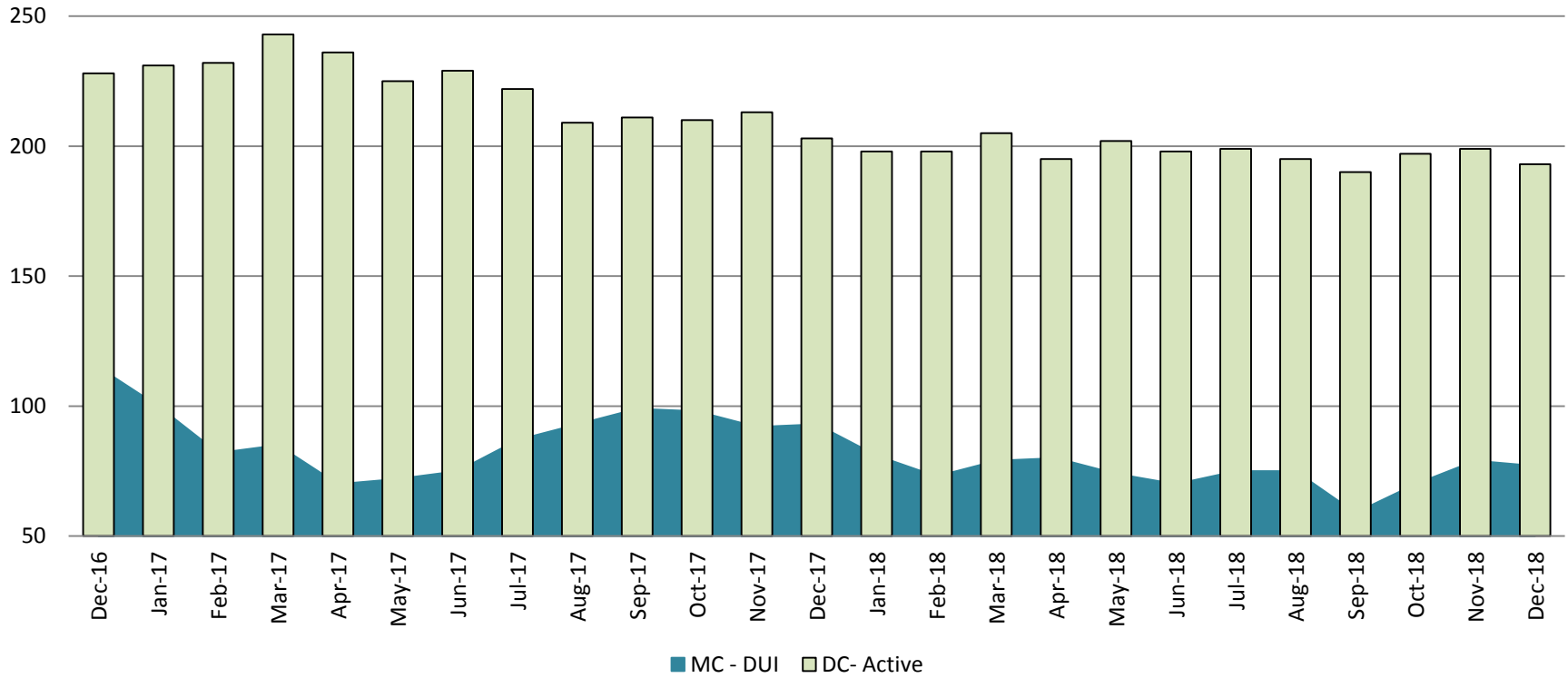
December	2016 ADP	2017 ADP	2018 ADP	2016 YTD Avg.	2017 YTD Avg.	2018 YTD Avg.
Muni. Court	51	31	19	38	36	24
Dist. Court	212	286	359	207	247	301
Total	263	317	378	245	283	326

Correlation: Total & PSP

Total Annual ADP: 2010 - Present

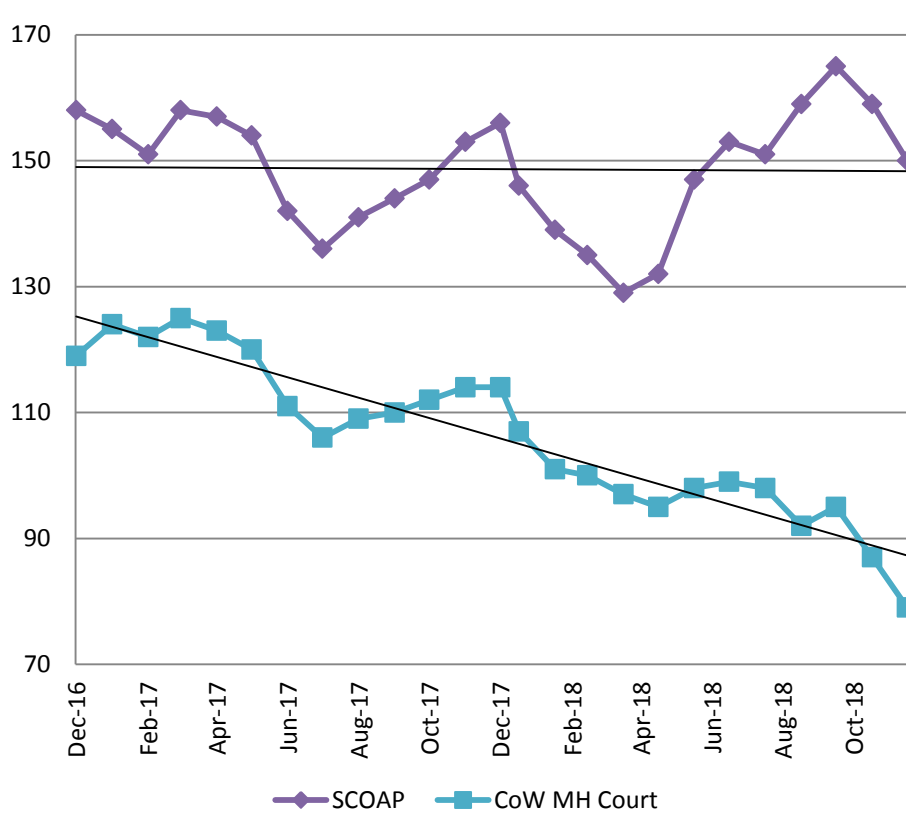


Diversion - Active Caseload December 2016 - Present

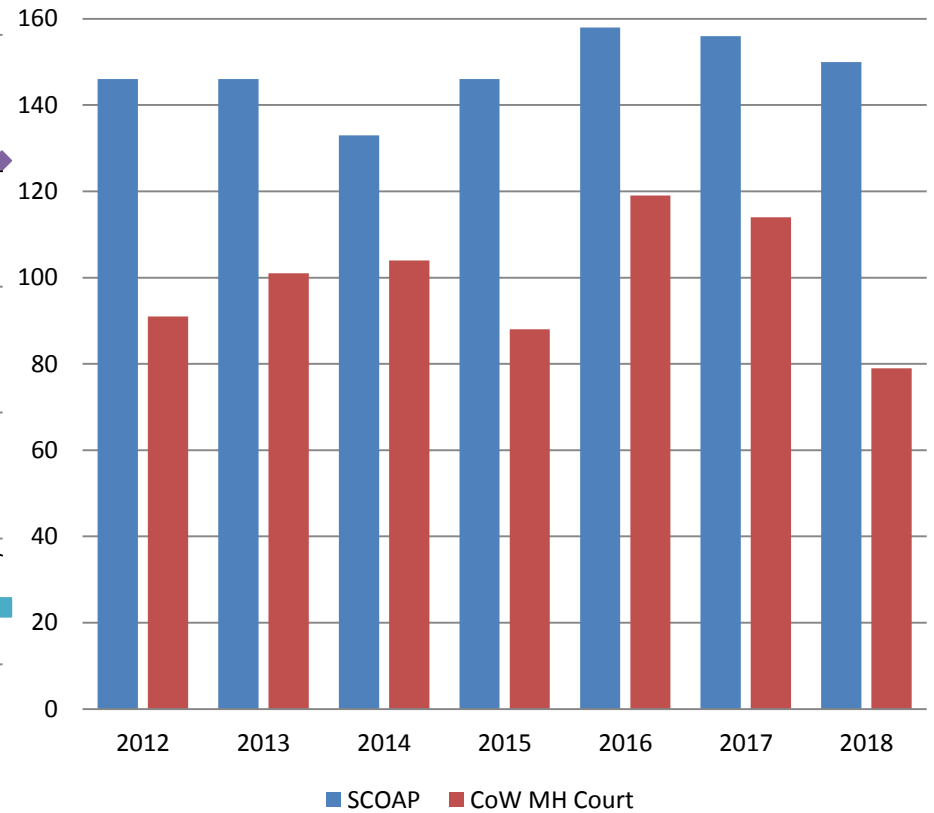


November	2016	2017	2018	2016 YTD Avg.	2017 YTD Avg.	2018 YTD Avg.
Muni. Court- DUI	115	93	77	146	87	74
Dist. Court- Active	228	203	193	236	222	197

Mental Health - ADP December 2016 - present

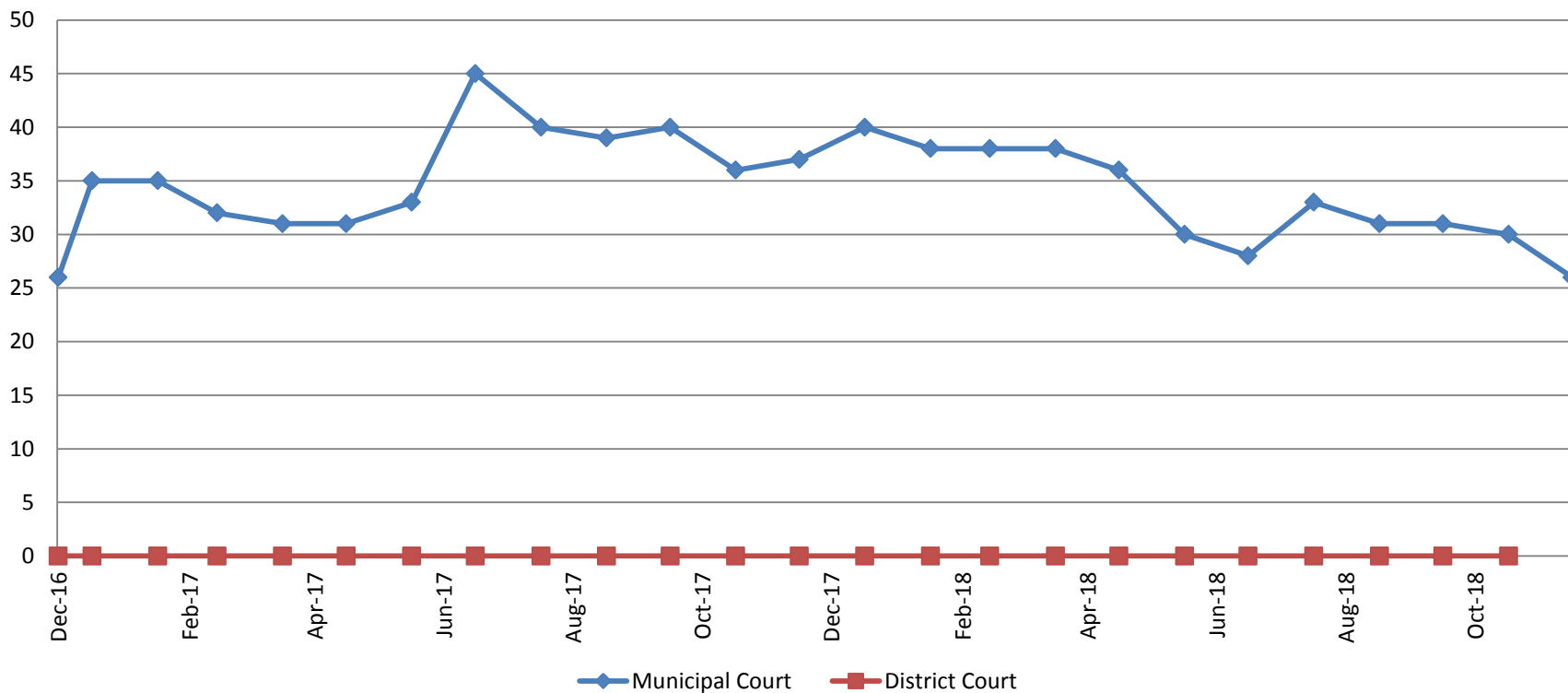


Mental Health ADP Year over Year- December



December	2016 ADP	2017 ADP	2018 ADP	2016 YTD Avg.	2017 YTD Avg.	2018 YTD Avg.
SCOAP	158	156	150	159	150	147
MH Court	119	114	79	108	116	96

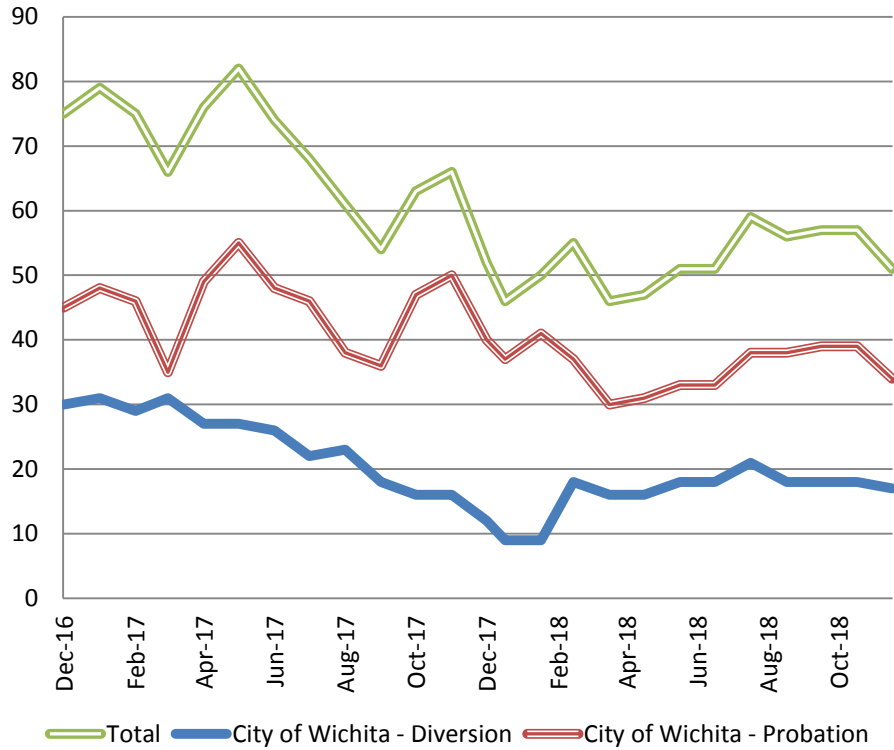
Day Reporting - Active Caseload December 2016-present



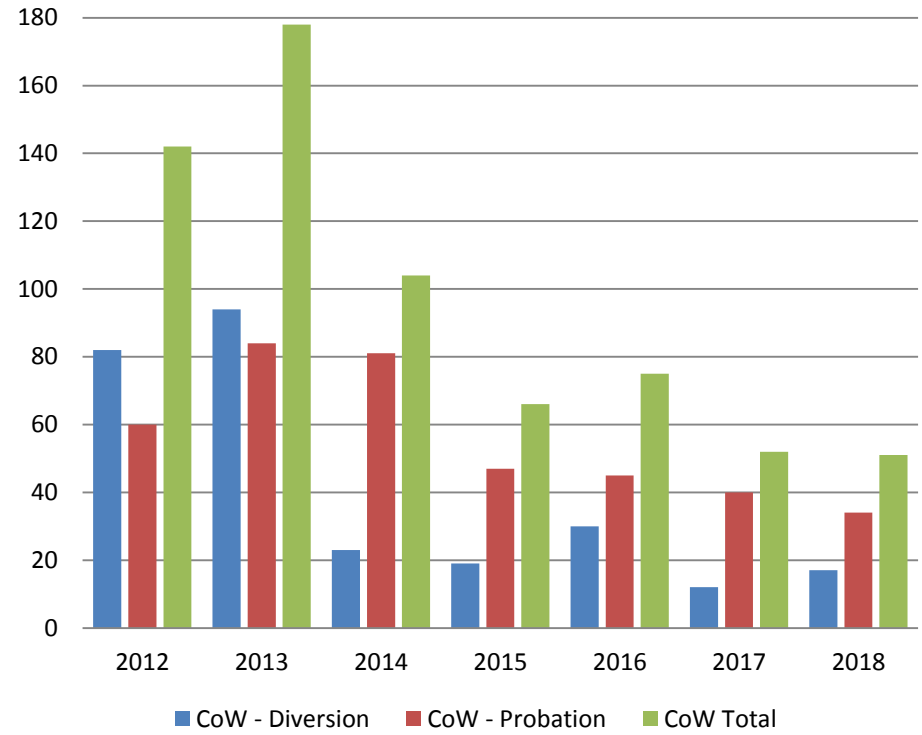
December	2013	2014	2015	2016	2017	2018
Muni. Court	79	67	57	26	37	26
Muni. Court YTD Avg.	78	68	68	39	36	33



Drug Court - City of Wichita ADP: December 2016- present

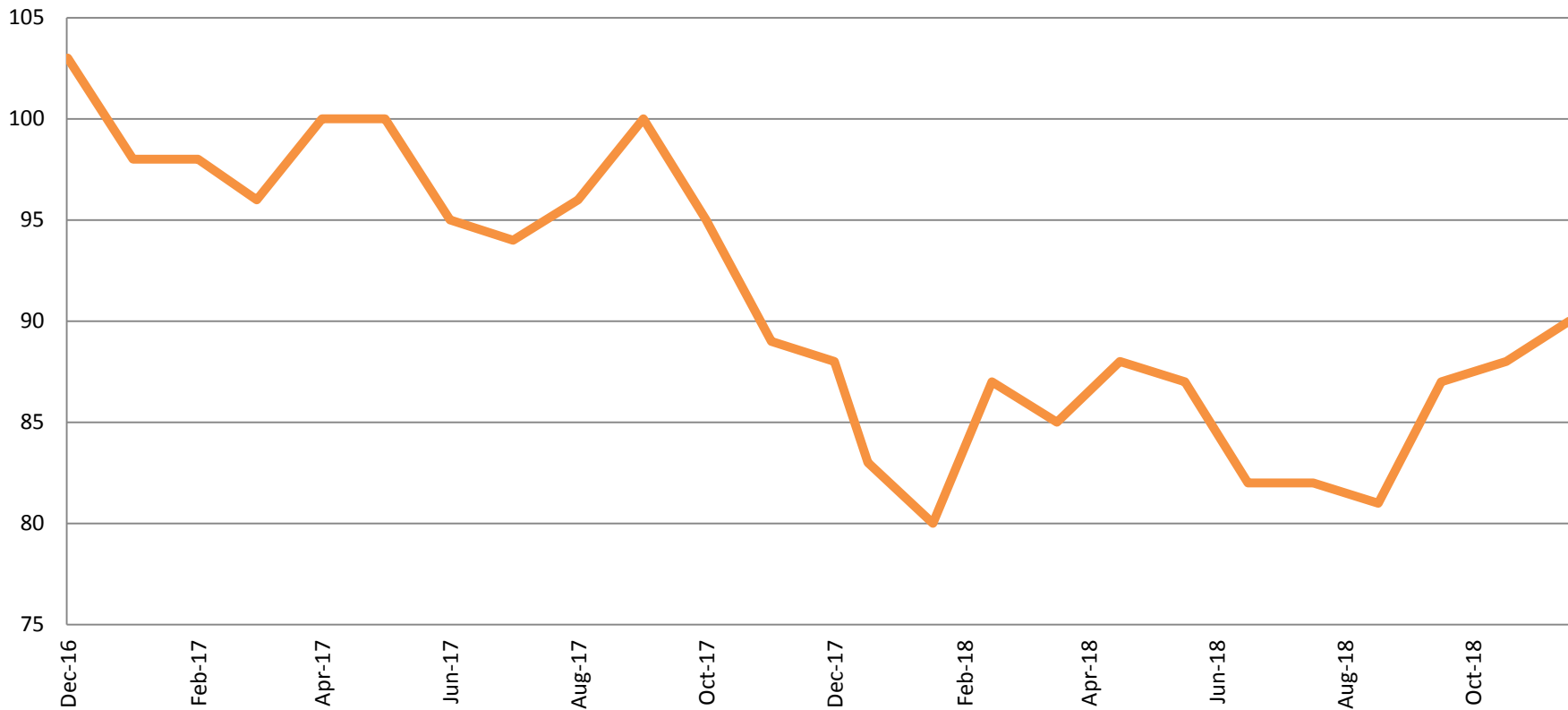


Drug Court- City of Wichita Year over Year - December



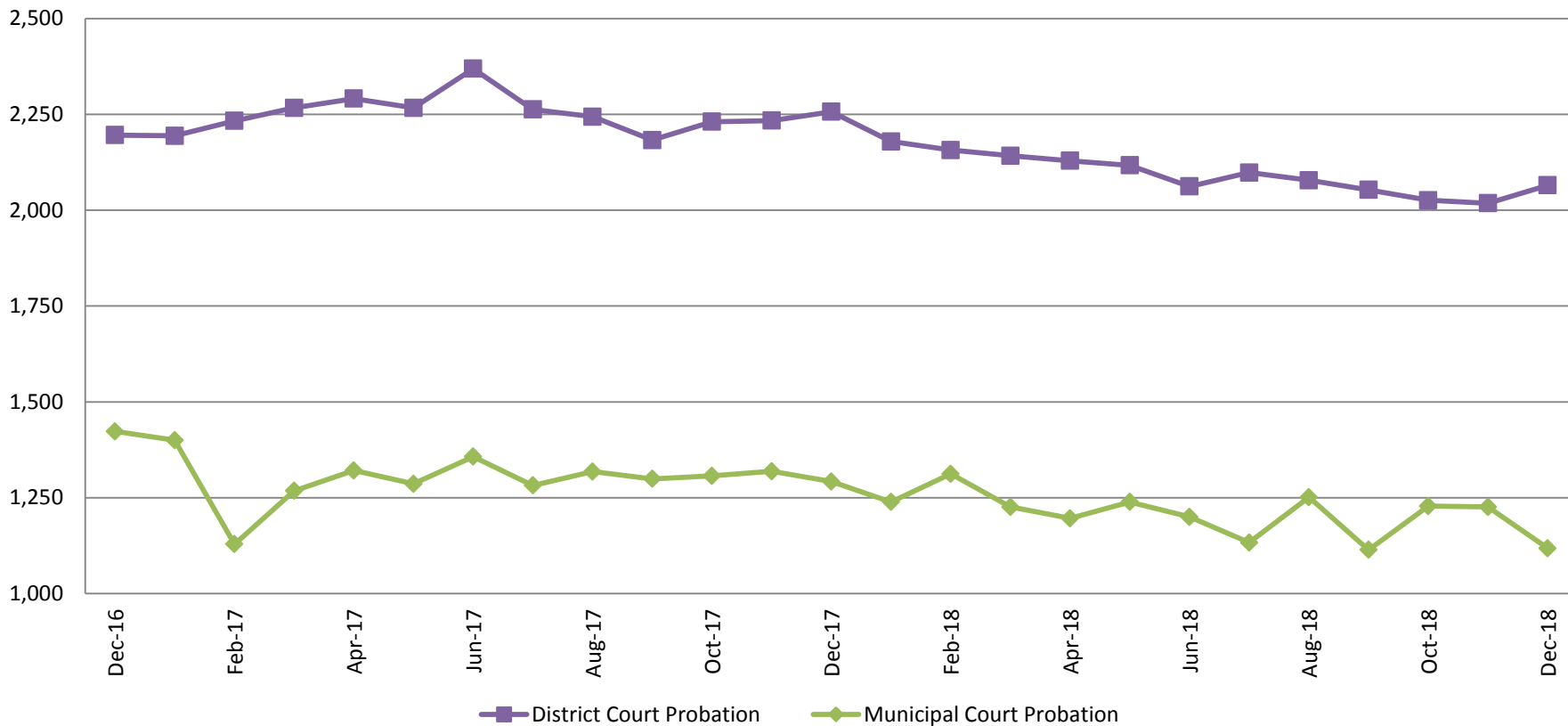
December	2016	2017	2018
Diversion	30	12	17
Probation	45	40	34
Total	75	52	51

Drug Court - Sedgwick County ADP: December 2016 - present



December	2016	2017	2018
Sedg. Co. ADP	103	88	90
YTD Avg.	109	96	85

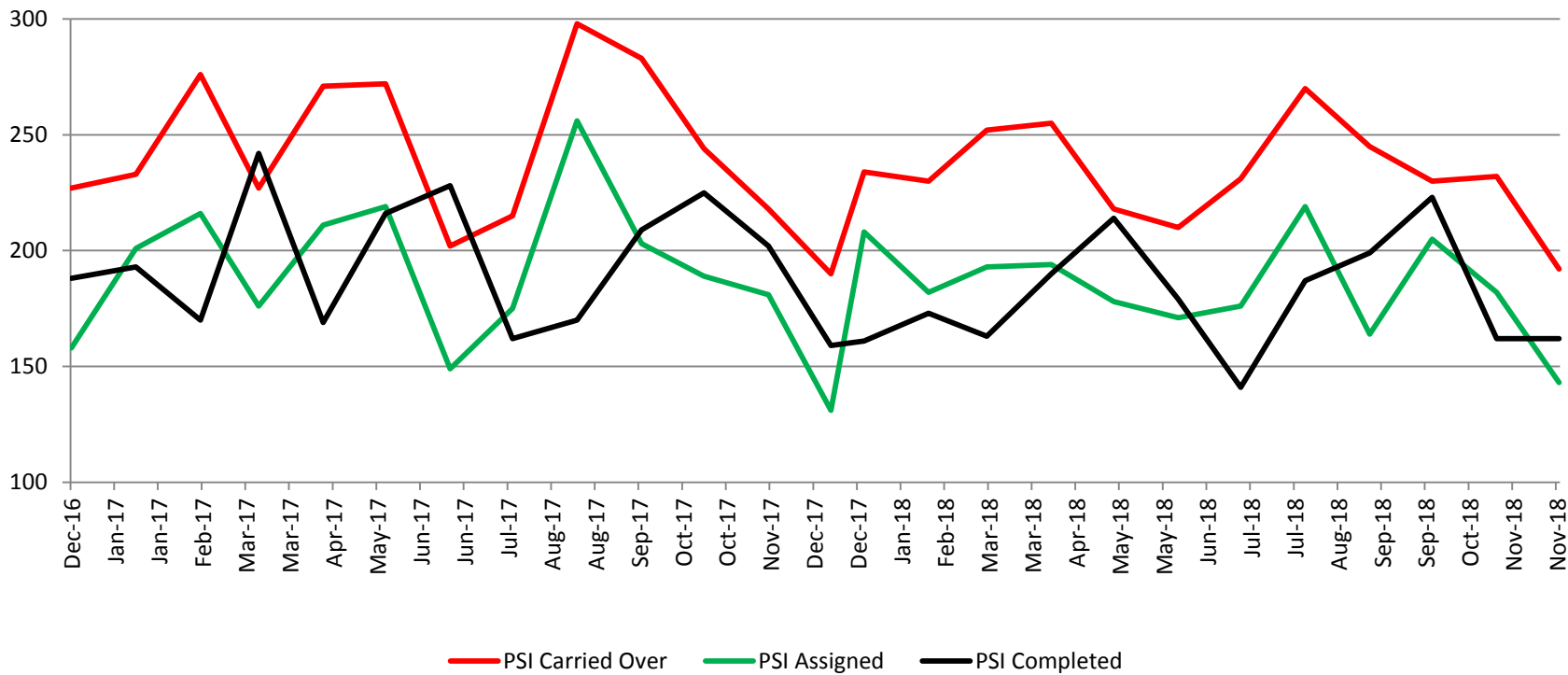
Probation - Active Caseloads December 2016 - present



December	2016	2017	2018	2016 YTD Avg.	2017 YTD Avg.	2018 YTD Avg.
Dist. Court Probation	2,196	2,257	2,065	2,163	2,253	2,094
Muni. Court Probation	1,423	1,292	1,118	1,495	1,298	1,207



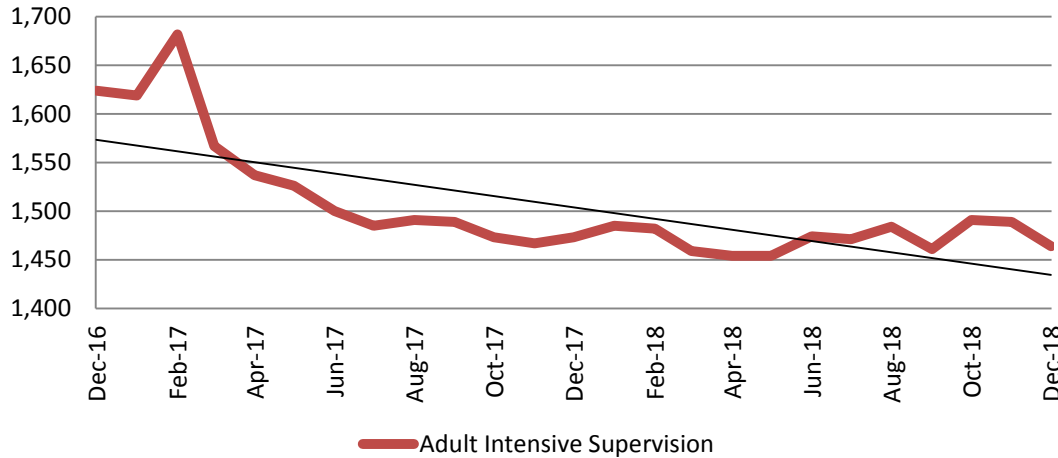
District Court Probation: Pre-Sentence Investigation December 2016 - present



December	2016	2017	2018
Carried Over	227	190	192
Assigned	158	131	143
Completed	188	159	162

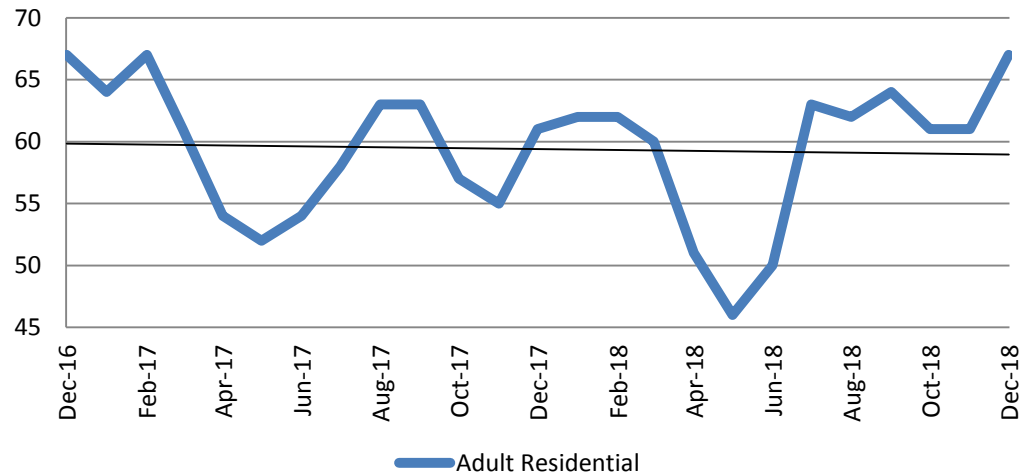
Community Corrections

**Adult Intensive Supervision Probation (AISP):
ADP December 2016 - present**



Year	December	December YTD Avg.
2016	1,624	1,629
2017	1,473	1,526
2018	1,464	1,472

**Adult Residential: ADP
December 2016- present**

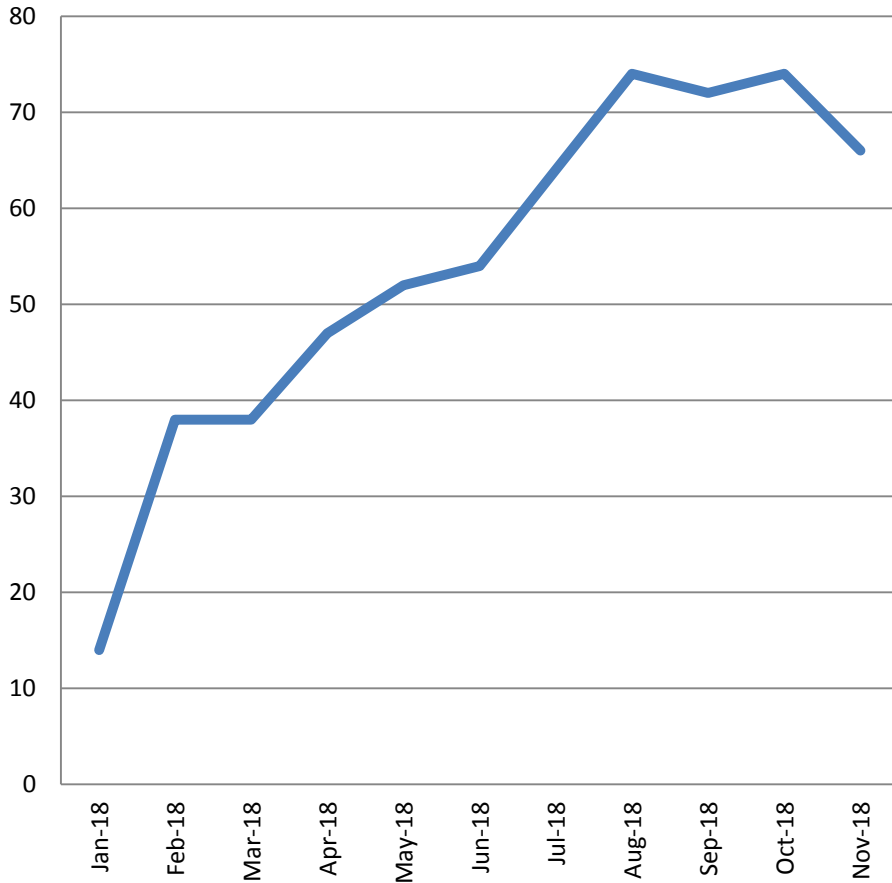


Year	December	December YTD Avg.
2016	67	63
2017	61	59
2018	67	59



Community Corrections

**Work Release: ADP
Jan 2018- present**



— Work Release

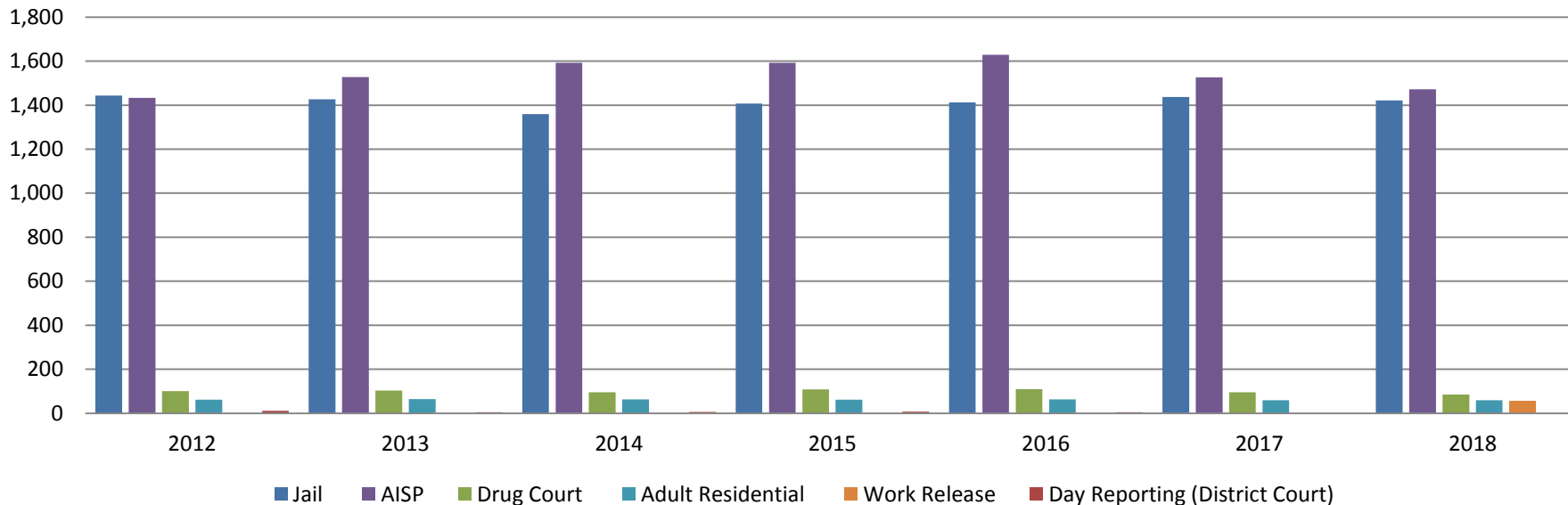
Month	Total	YTD Avg.
January	14	14
February	38	26
March	38	30
April	47	34
May	52	38
June	54	41
July	64	44
August	74	48
September	72	50
October	74	53
November	66	54
December	62	55



Sedgwick County...
working for you

Correlation: Total & Sedgwick County Programs (Adult)

Total Annual ADP 2012-Present

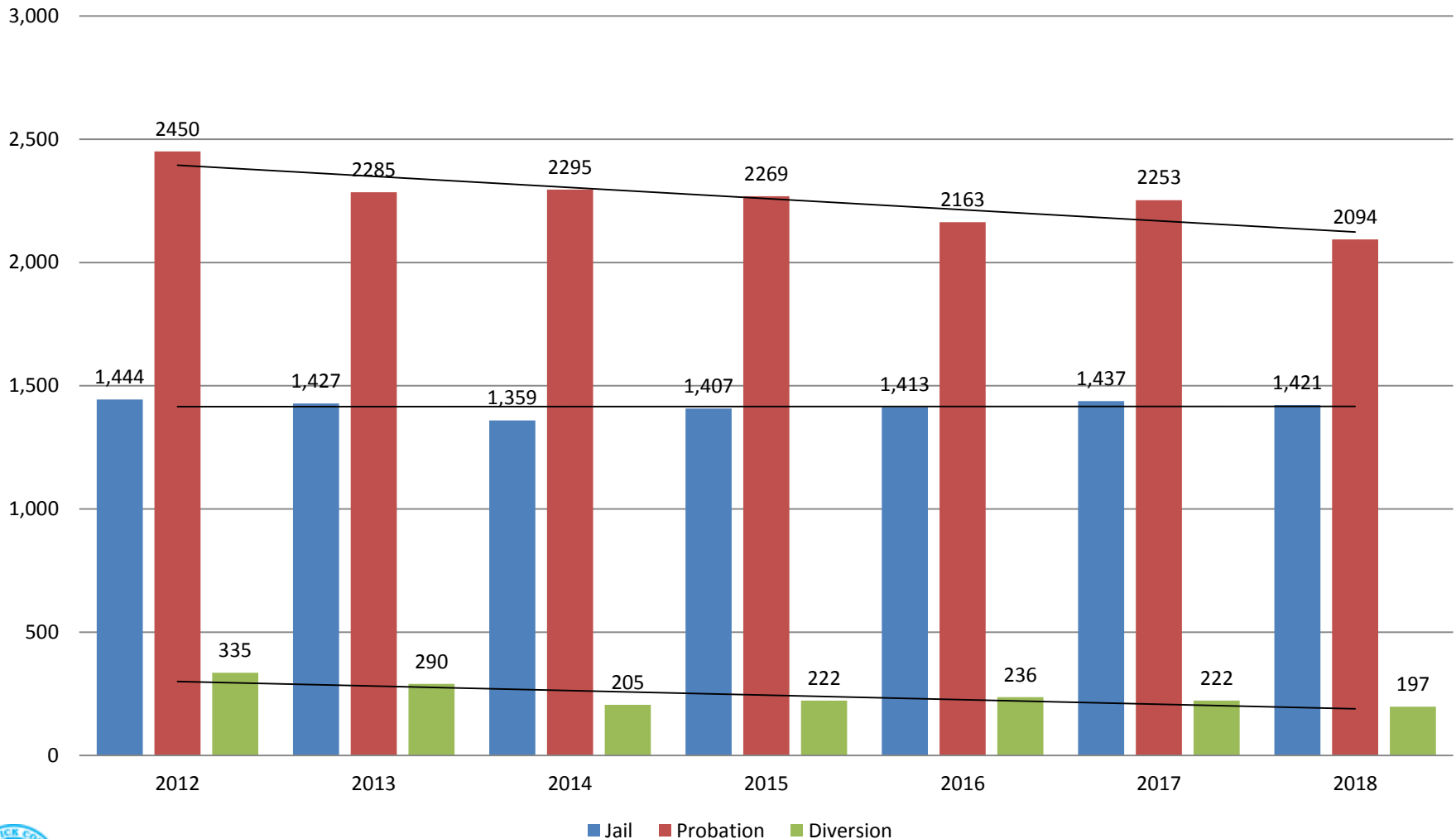


	2016	2017	2018
Jail	1,413	1,437	1,421
AISP	1,629	1,526	1,472
Drug Court	109	96	85
Adult Residential	63	59	59
Work Release	0	0	55
Day Reporting (DC)	4	0	0



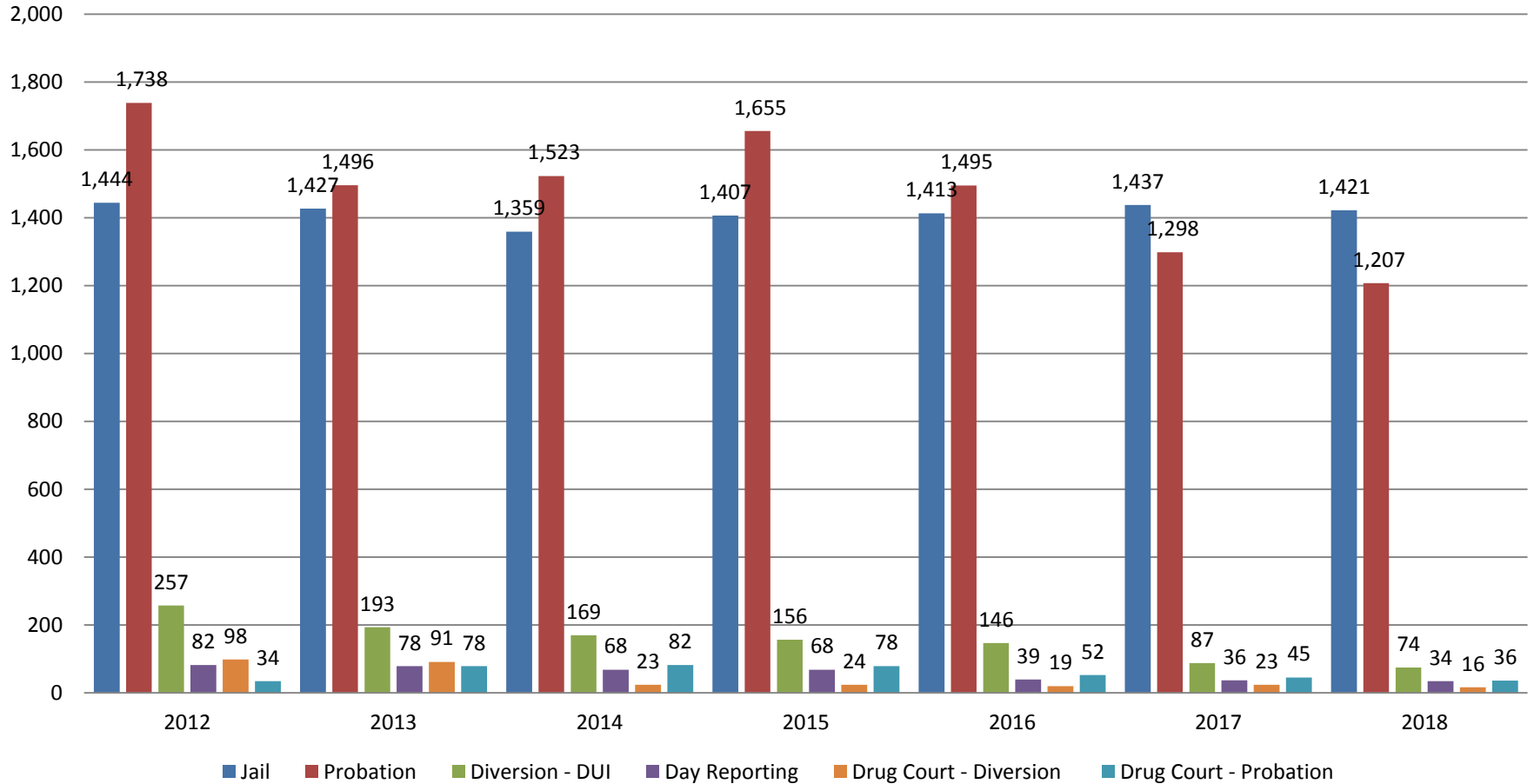
Correlation: Total & District Court Programs

Total Annual ADP: 2012 - Present



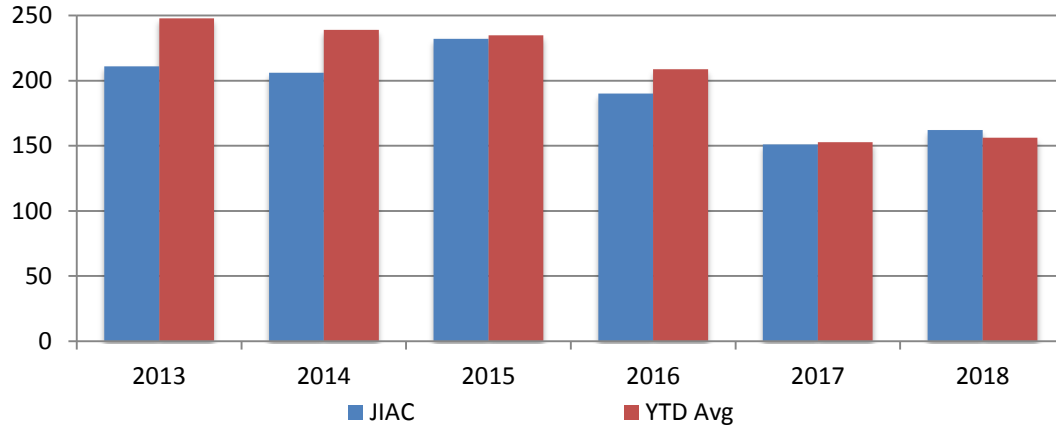
Correlation: Total & City of Wichita / Municipal Court Programs

Total Annual ADP: 2012 - present



Juvenile

JIAC Intakes
December 2013 - present

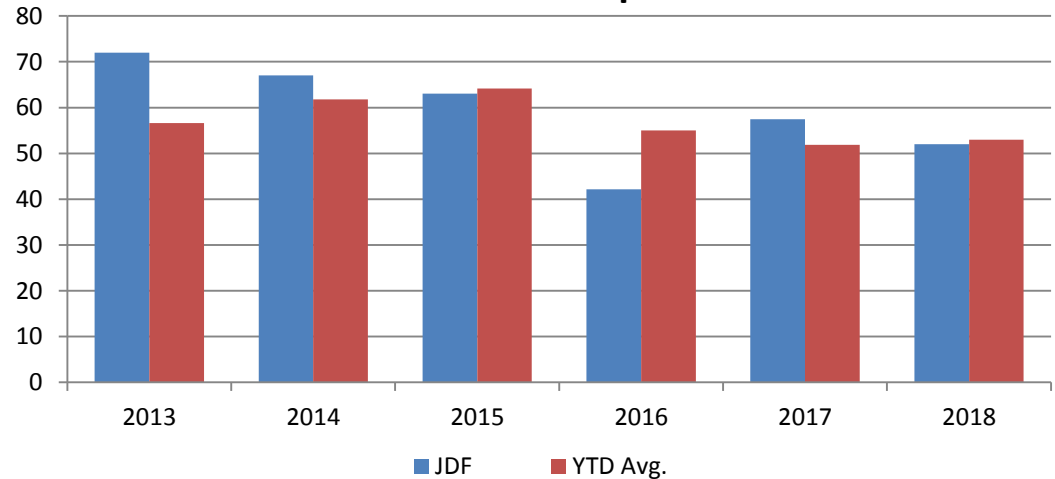


Year	December	December YTD Avg.
2013	211	248
2014	206	239
2015	232	235
2016	190	209
2017	151	153
2018	162	156

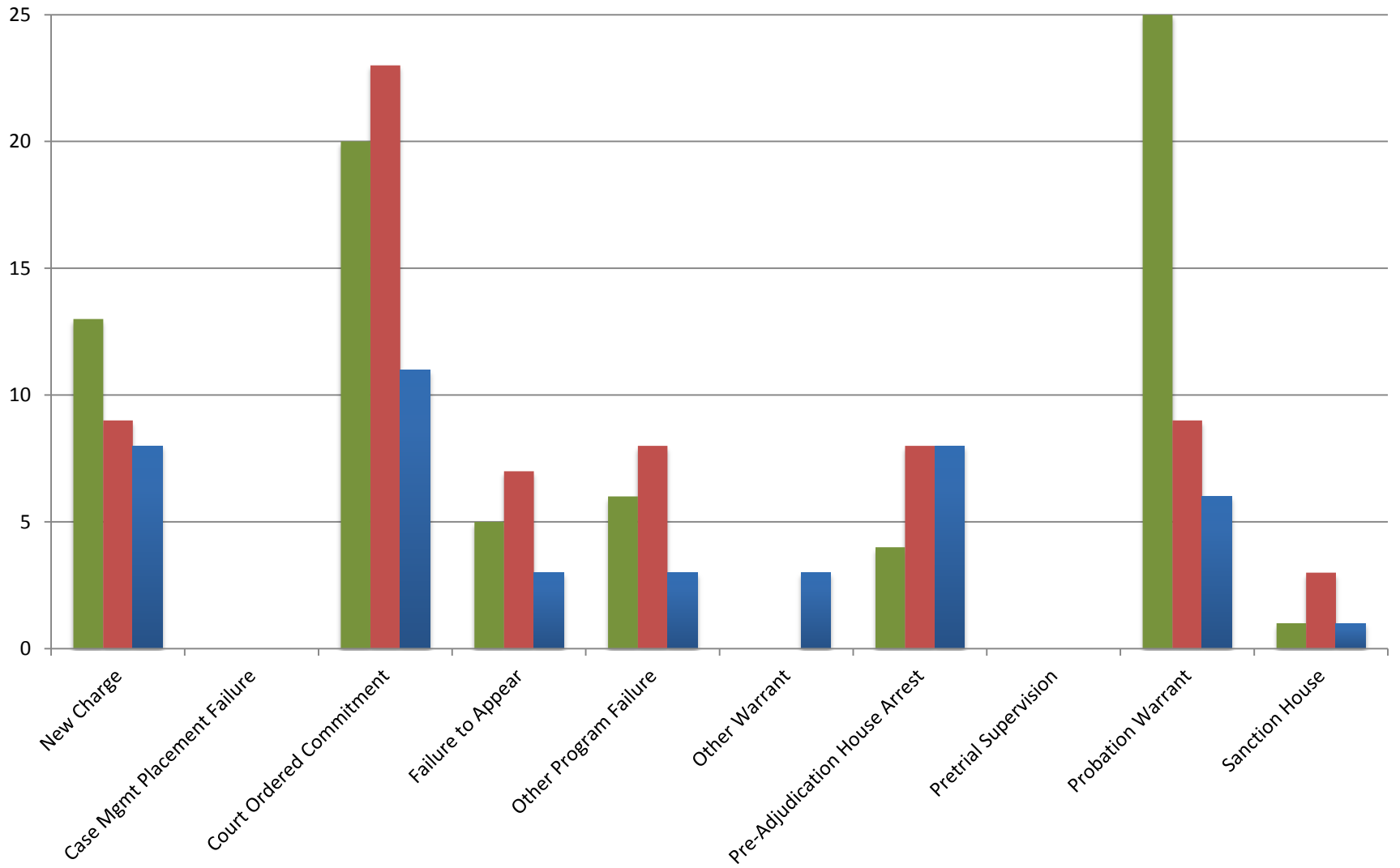
Year **December** **December YTD Avg.**

2013	72	57
2014	67	62
2015	63	64
2016	42	55
2017	57	52
2018	52	53

JDF ADP
December 2013 - present



Reason for JDF Admits



■ Oct-18 ■ Nov-18 ■ Dec-18

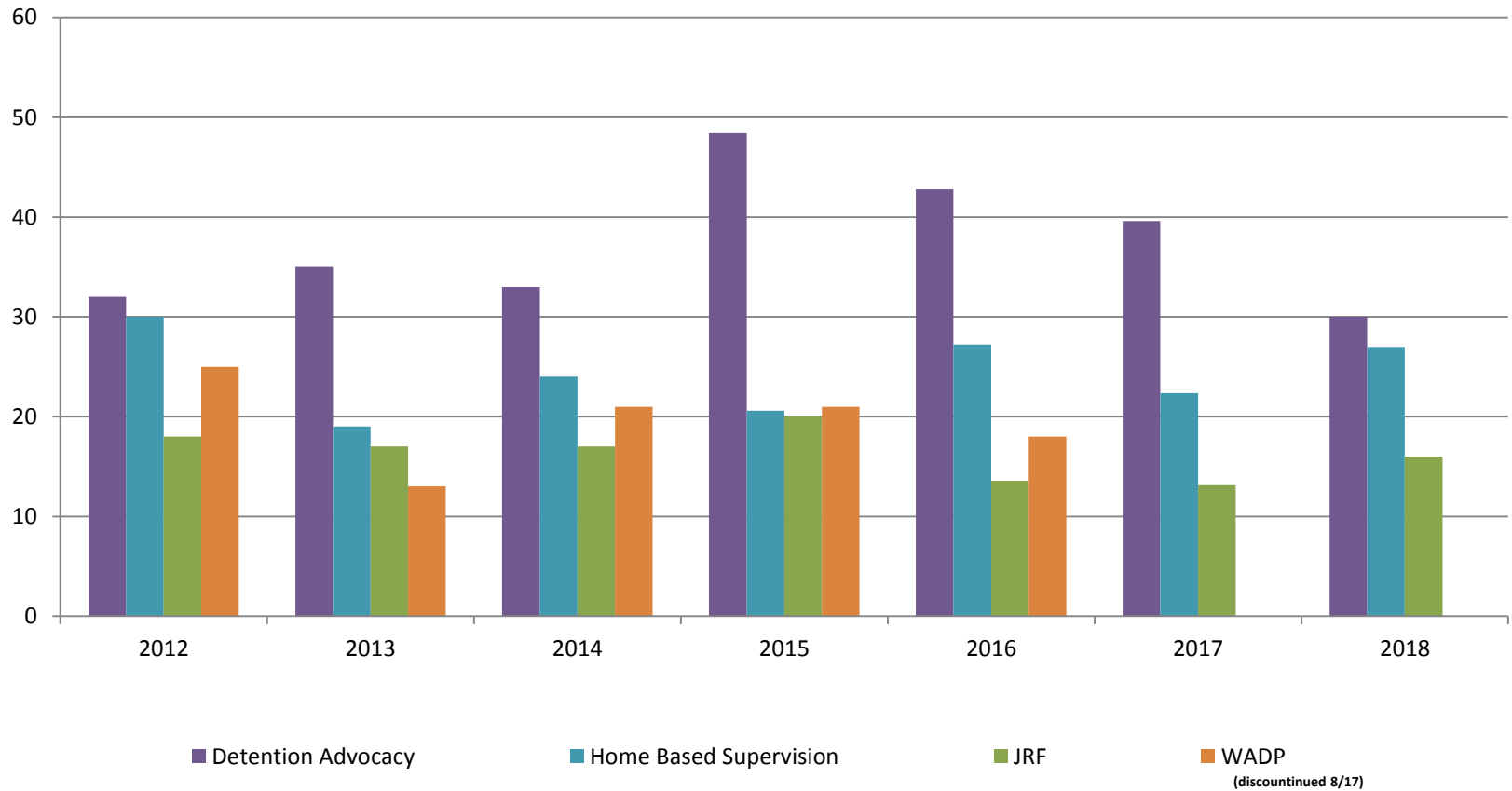
Reason for JDF Admits

Reason	Jan 2018	Feb 2018	March 2018	April 2018	May 2018	June 2018	July 2018	Aug 2018	Sept 2018	Oct 2018	Nov 2018	Dec 2018
New Charges	11	11	20	11	12	17	9	15	6	13	9	8
Case Management Placement Failures	0	0	0	0	1	4	1	0	0	0	0	0
Court Ordered Commitment	4	6	10	8	16	9	11	24	12	20	23	11
Failure to Appear	5	4	4	9	3	4	6	3	9	5	7	3
Other Program Failure	0	2	6	2	2	2	6	7	8	6	8	3
Other Warrant	4	6	4	1	1	0	3	1	0	0	0	3
Pre- Adjudication House Arrest	2	7	6	3	1	6	4	2	2	4	8	8
Pretrial Supervision	1	2	3	0	1	0	1	1	0	0	0	0
Probation Warrant	6	4	10	9	10	6	11	12	13	25	9	6
Sanction House	7	0	4	3	2	2	2	4	2	1	3	1



Juvenile Detention Alternatives

ADP: December 2012 - Present



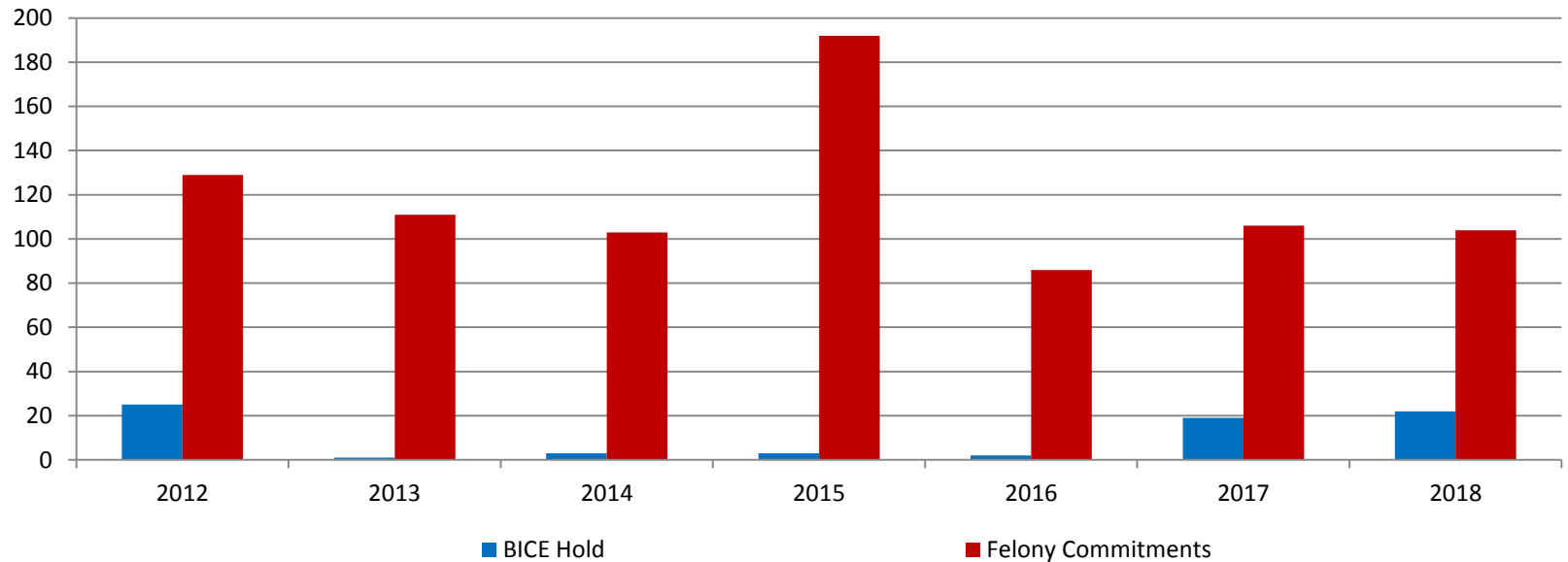
Juvenile Detention Services

December ADP	2015	2016	2017	2018
Juvenile Detention Facility	63	42	56	52
Juvenile Residential Facility	20	14	13	16
Home Based Supervision	21	27	22	27
Detention Advocacy Case Management Services	48	43	40	30
Weekend Alternative Detention Program (total)	21	18	0	0

December YTD AVERAGE	2015	2016	2017	2018
Juvenile Detention Facility	64	55	52	53
Juvenile Residential Facility	16	16	15	14
Home Based Supervision	21	27	21	25
Detention Advocacy Case Management Services	48	36	38	32
Weekend Alternative Detention Program	19	15	9	0

Monthly Jail Snapshot: November 30, 2018

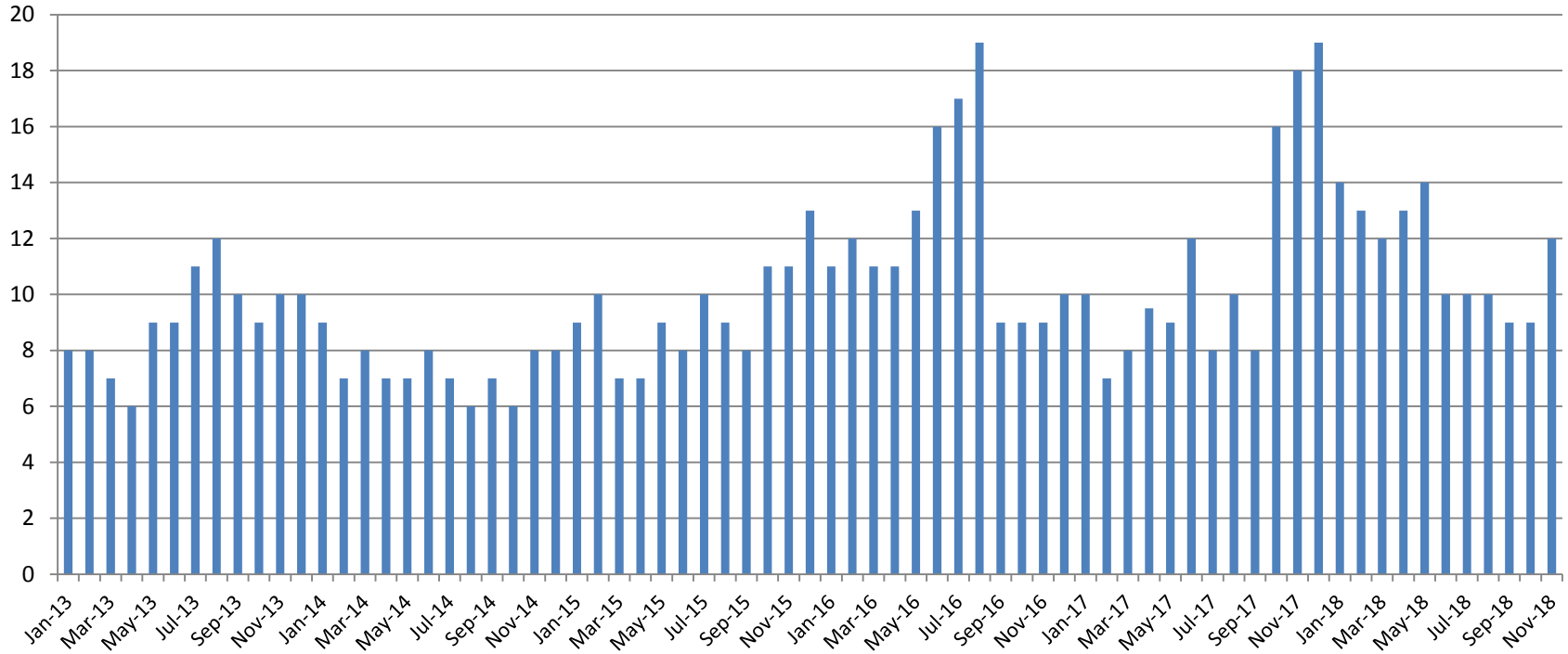
Snapshots December 2012 - Present



BICE Hold	2013	2014	2015	2016	2017	2018
November	1	3	3	2	199	20

Felony Commitments	2013	2014	2015	2016	2017	2018
November	111	103	192	86	106	104

Journal Entry Completion (Average Days) January 2013-Present



November	2013	2014	2015	2016	2017	2018
Avg. Days	10	8	13	10	19	12
YTD Avg.	9	7	9	12	11	11.5