

Criminal Justice Coordinating Council

Population Report & Program Trends

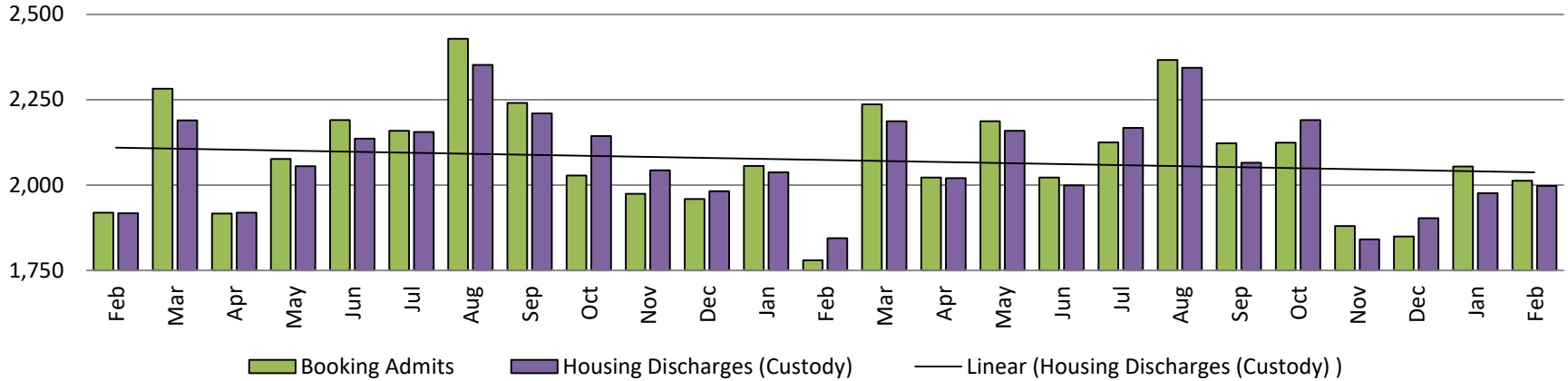
March 2019



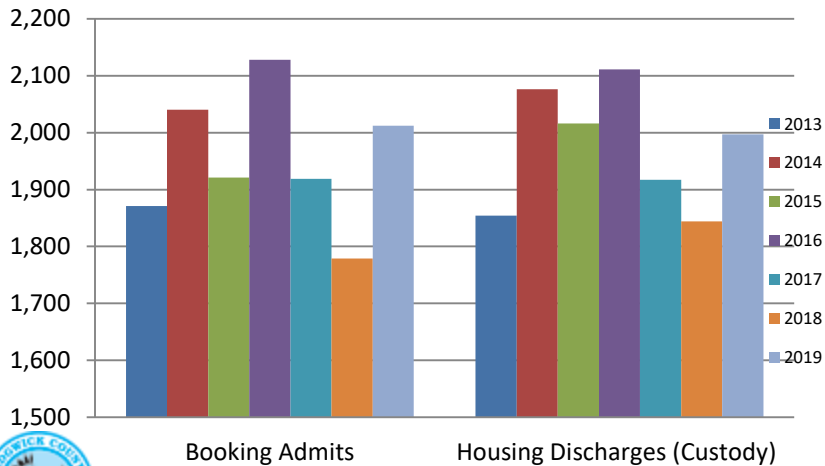
Sedgwick County...
working for you

Detention Facility

Booking Admits & Housing Discharges from Custody February 2017-Present

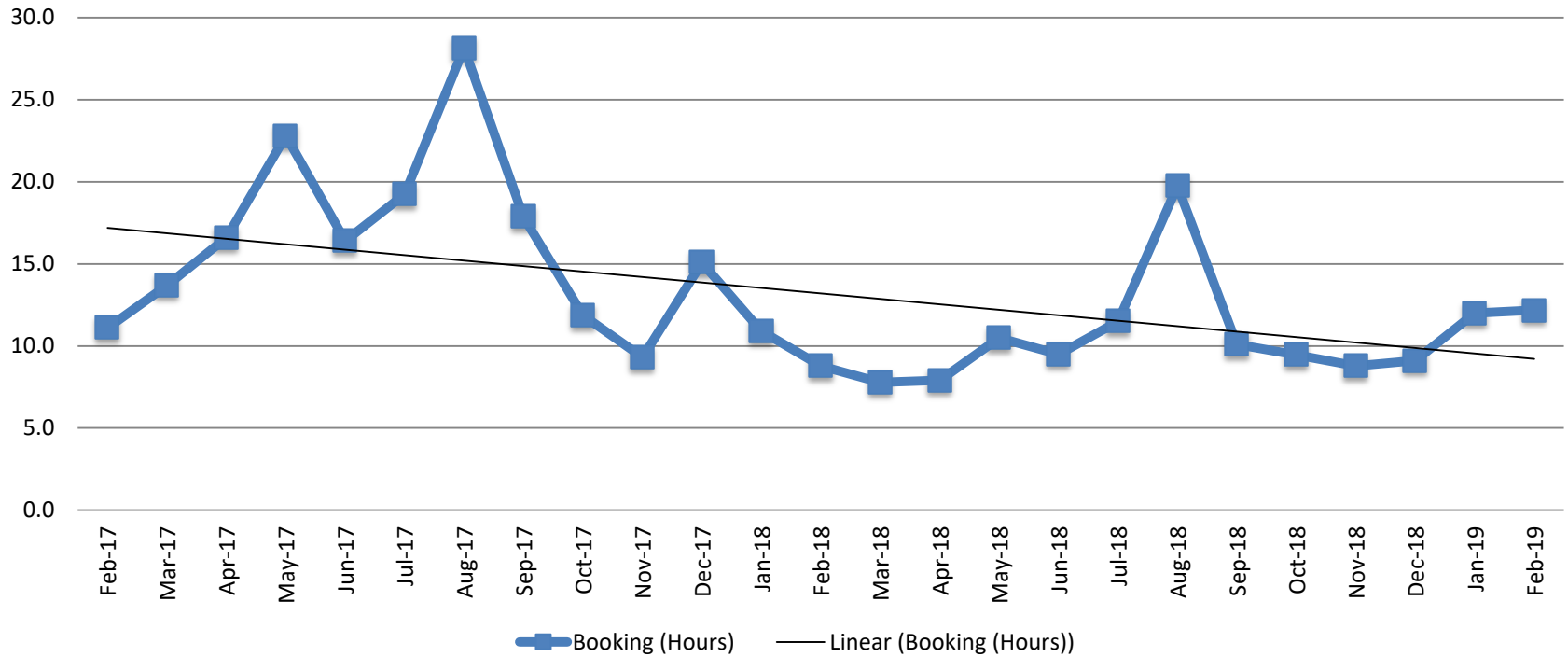


Bookings Year over Year: Month of February



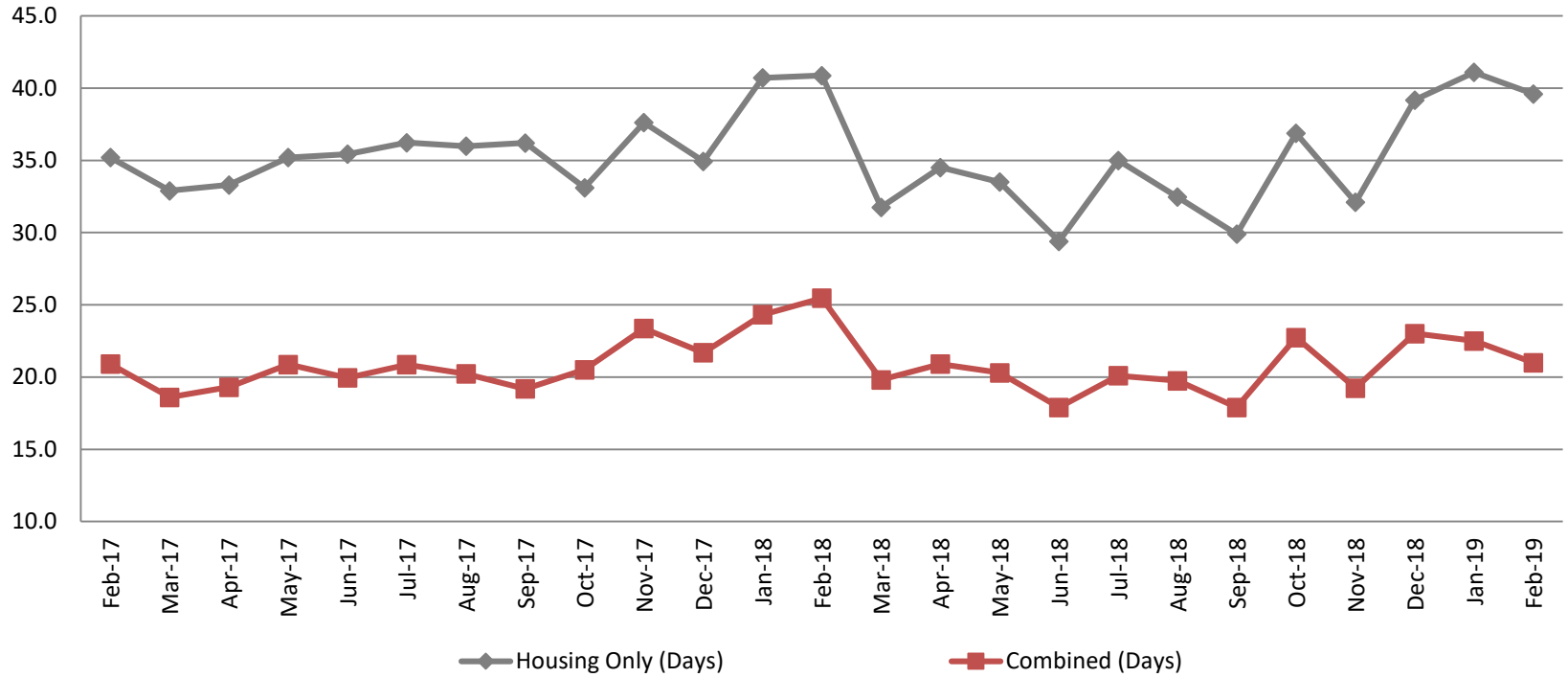
Bookings February	Housing Discharges February
2017: 1,919	2017: 1,917
2018: 1,779	2018: 1,844
2019: 2,012	2019: 1,997

Average Length of Stay: Booking (Hours) February 2017 - Present



February	February YTD Average
2017: 11.1	2017: 12.7
2018: 8.8	2018: 9.8
2019: 12.2	2019: 12.1

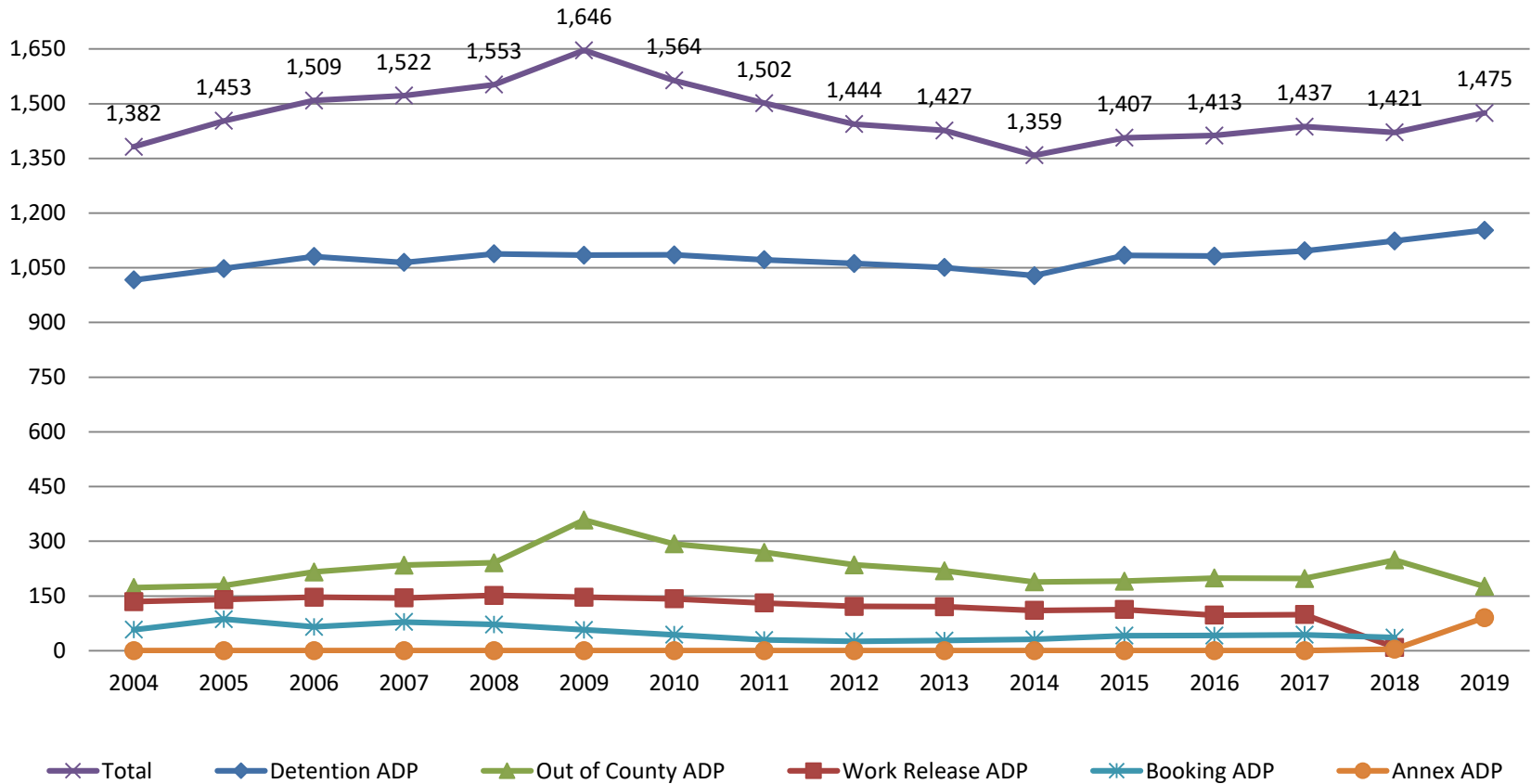
Average Length of Stay: Housing & Combined (Days) February 2017 - Present



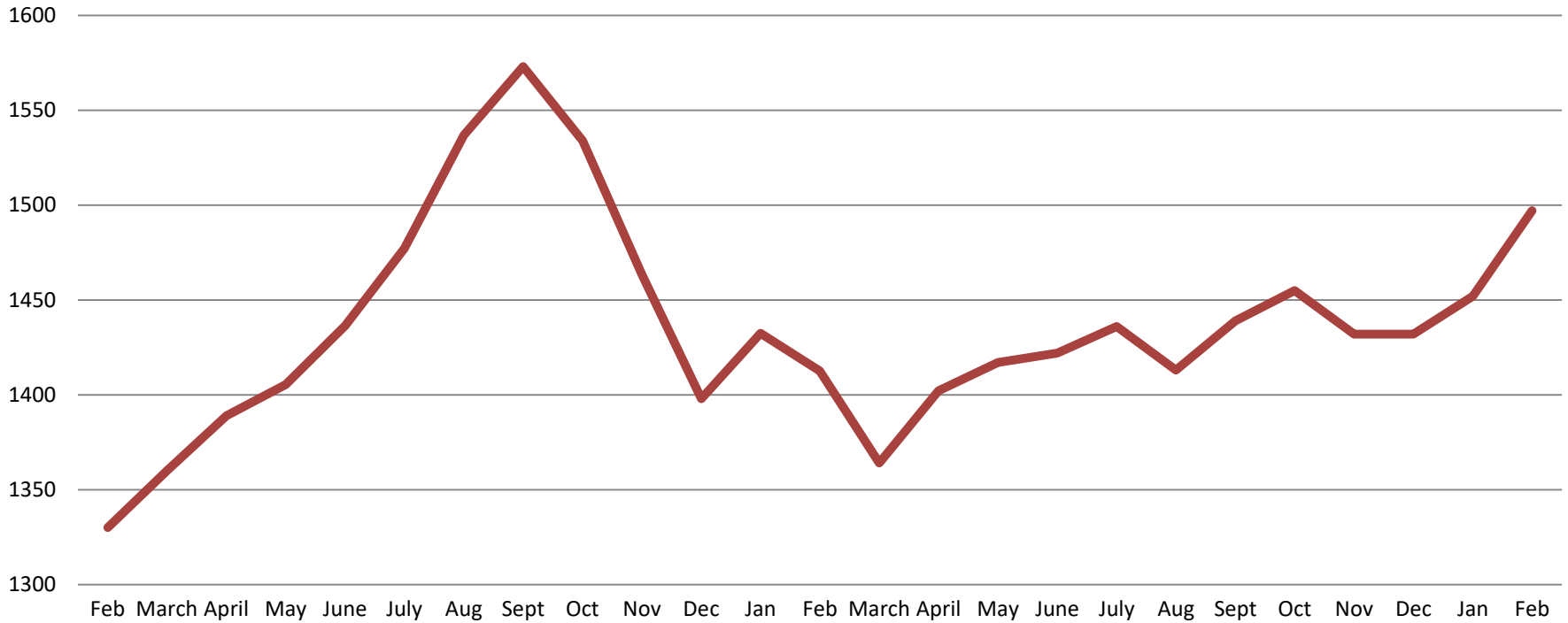
Month Year	Housing Only	Housing YTD AVG	Combined Days	Combined YTD AVG
February 2017	35.2	35.5	20.9	20.8
February 2018	40.9	40.8	25.5	24.9
February 2019	49.6	40.4	21	21.8

Jail: Annual Average Daily Population (ADP)

TRENDS: Booking, Detention, Work Release, & Out of County
Annual ADP: 2004 - present

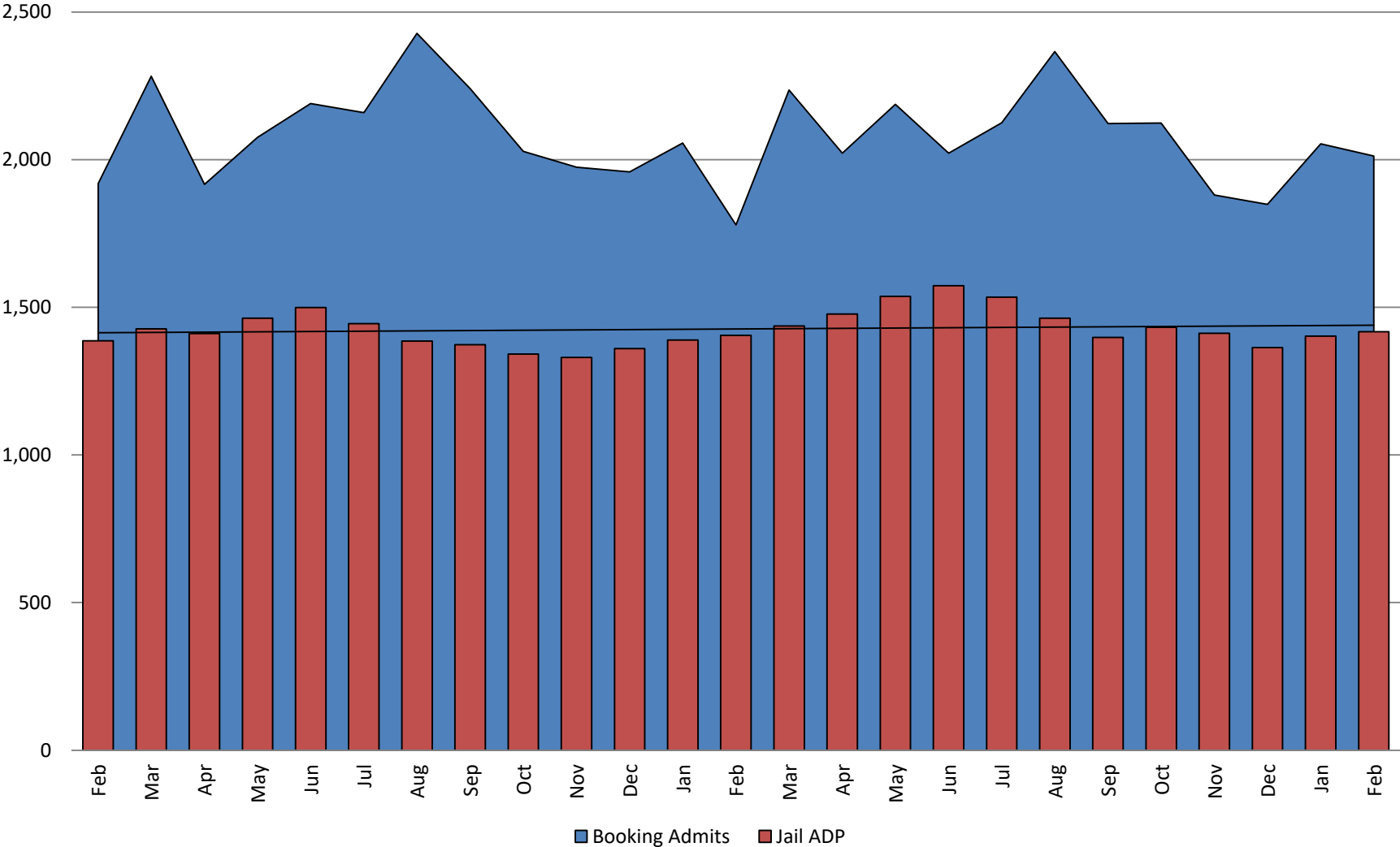


TOTAL MONTHLY ADP: JAIL (Booking, Detention Facility, Annex, & Out of County) February 2017 - present



February 2017	February 2018	February 2019
1,330	1,413	1,497

Booking Admits & Total Monthly ADP (Jail): February 2017 - present

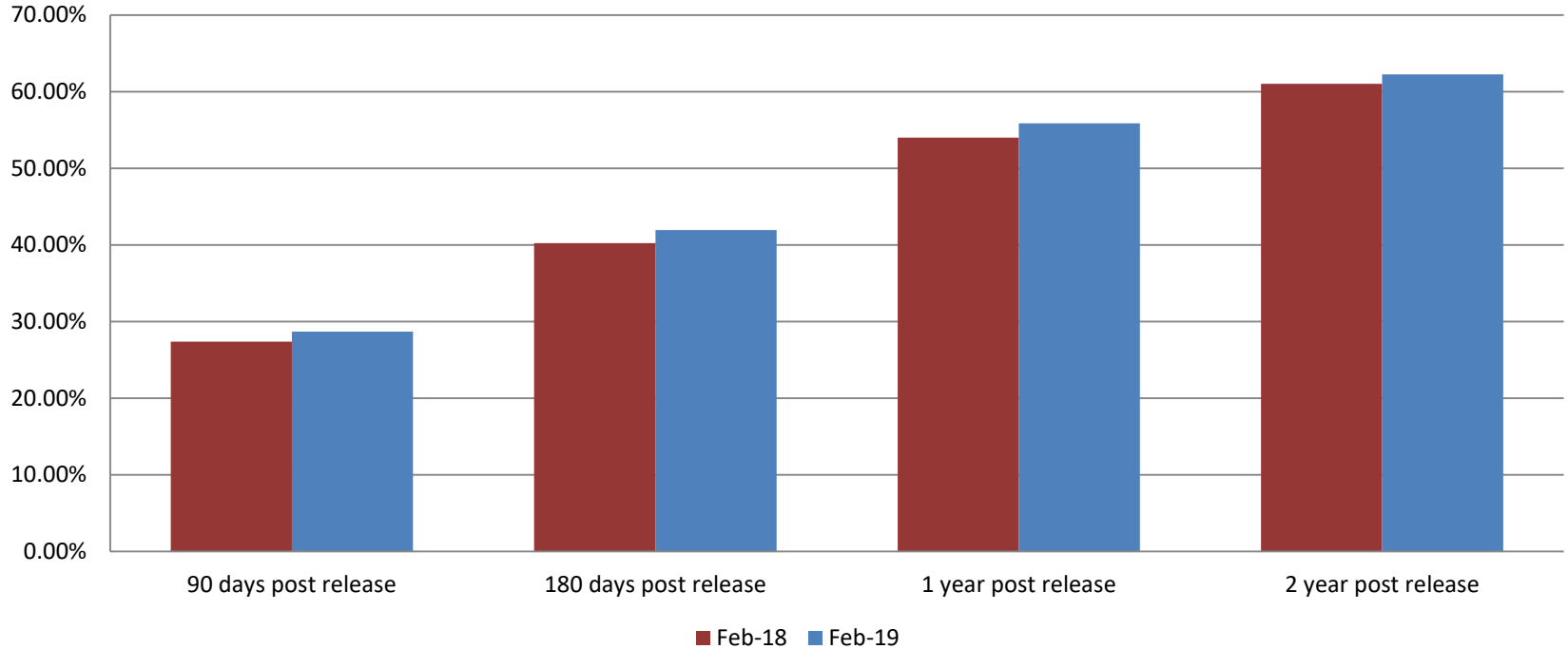


■ Booking Admits ■ Jail ADP



Jail includes individuals in booking, detention, work release and out-of county (combined)
(data obtained from detention facility)

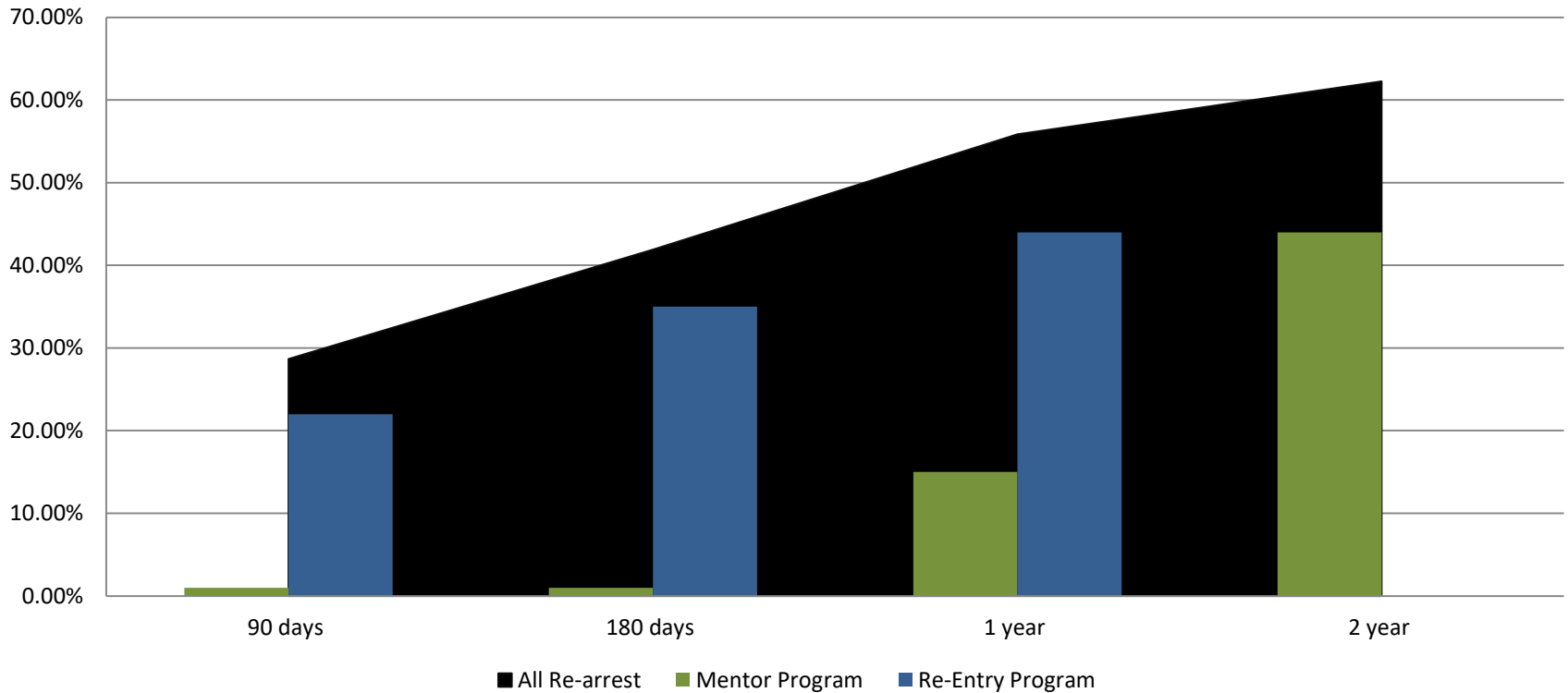
Percent of released inmates rearrested February



Month Year	90 Days	180 Days	1 Year	2 Years
February 2018	27.39%	40.22%	54.02%	61.03%
February 2019	28.67%	41.93%	55.88%	62.27%

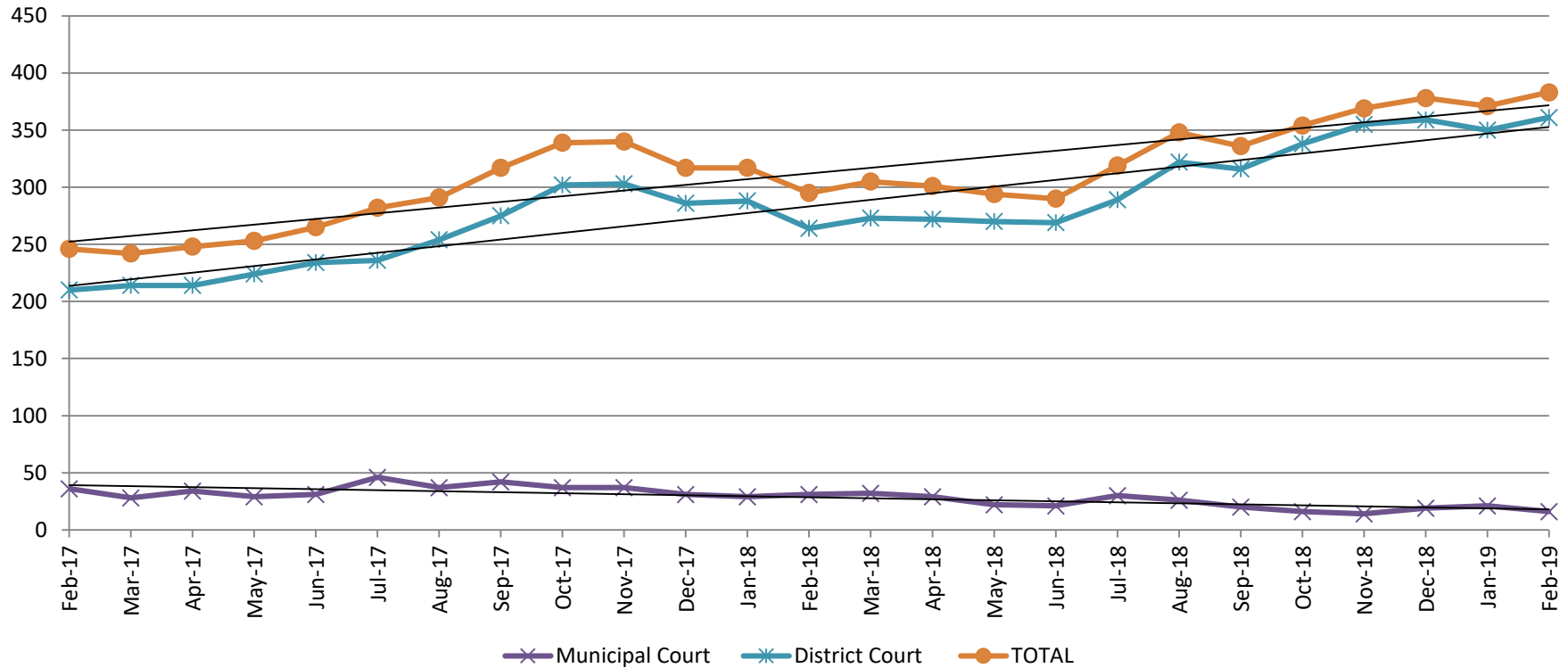


Recidivism by Programs February 2019



February 2019	90 Days	180 Days	1 year	2 years
All Re-arrests	28.67%	41.93%	55.88%	62.27%
Mentor Program	1%	1%	13%	38%
Re-Entry Program	22%	35%	44%	N/A

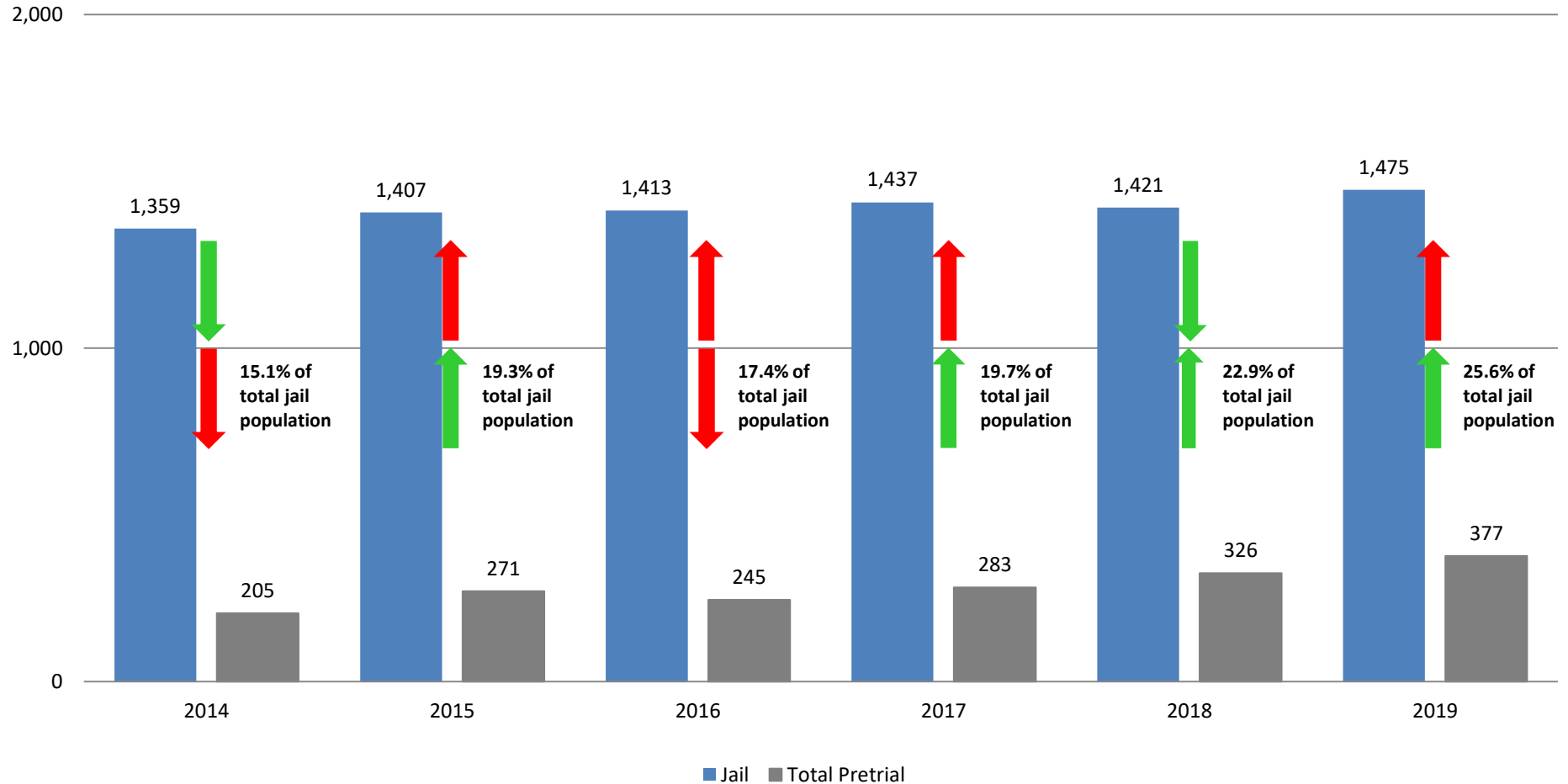
Pretrial Services Program (PSP) Monthly ADP: February 2017 - Present



February	2017 ADP	2018 ADP	2019 ADP	2017 YTD Avg.	2018 YTD Avg.	2019 YTD Avg.
Muni. Court	36	31	16	38	30	18.5
Dist. Court	210	264	361	212	276	355.5
Total	246	295	383	250	306	377

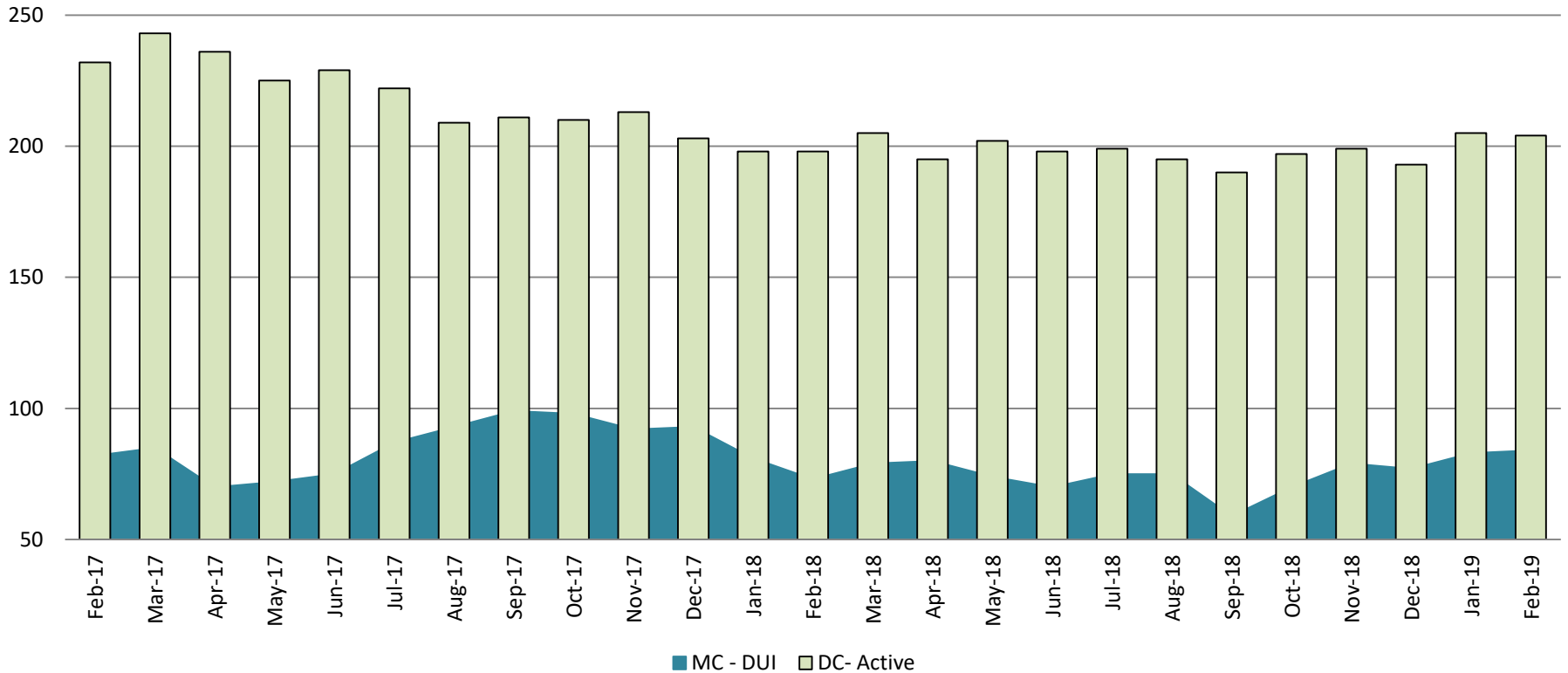
Correlation: Total & PSP

Total Annual ADP: 2014 - Present



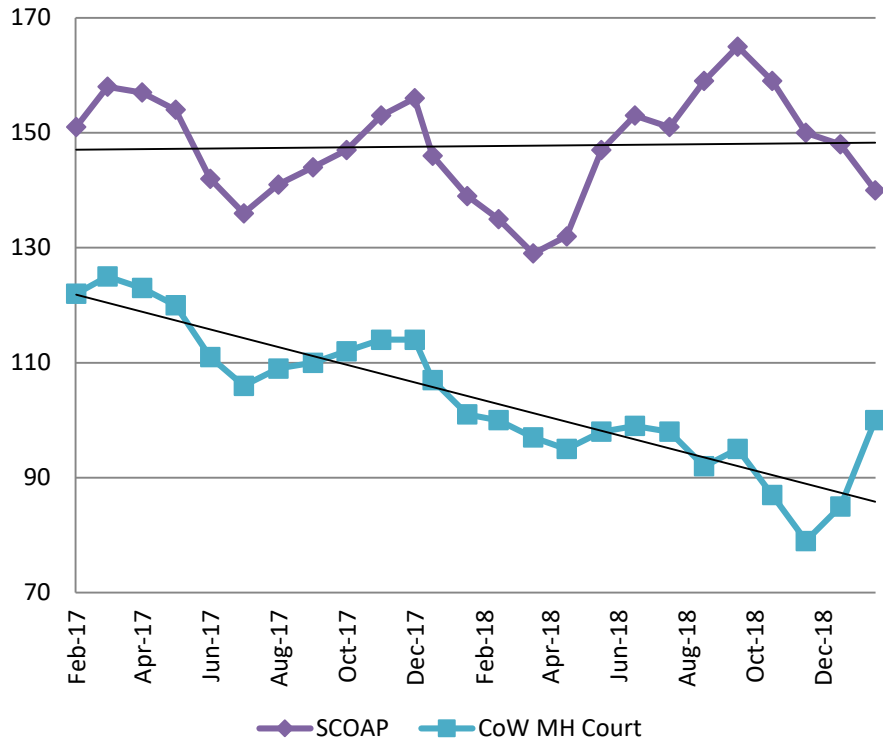
Diversion - Active Caseload

February 2017- Present

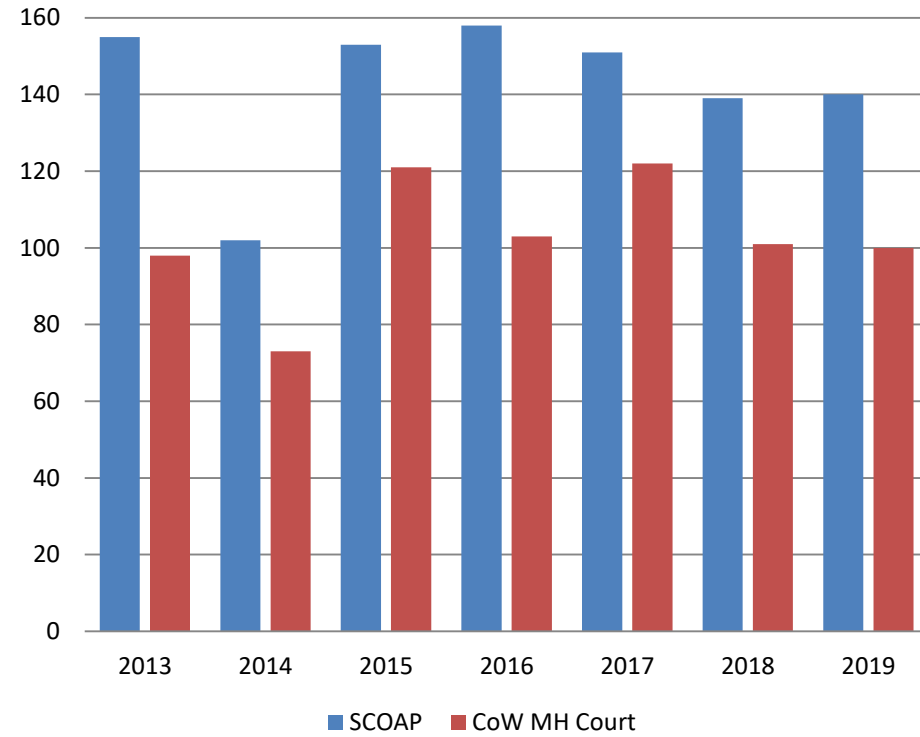


February	2017	2018	2019	2017 YTD Avg.	2018 YTD Avg.	2019 YTD Avg.
Muni. Court- DUI	82	73	84	91	77	84
Dist. Court- Active	232	198	204	232	198	205

Mental Health - ADP February 2017 - present

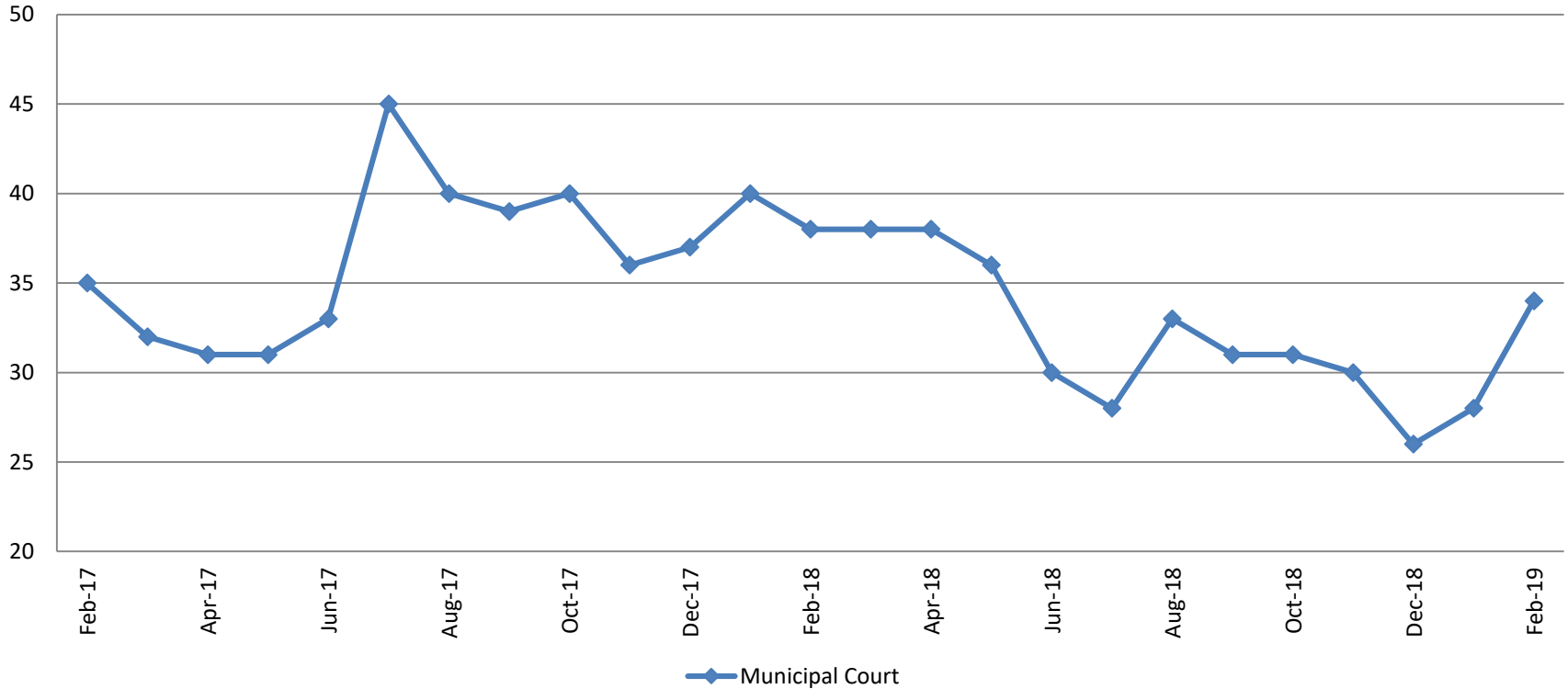


Mental Health ADP Year over Year- February



February	2017 ADP	2018 ADP	2019 ADP	2017 YTD Avg.	2018 YTD Avg.	2019 YTD Avg.
SCOAP	151	139	140	155	143	144
MH Court	122	101	100	124	104	93

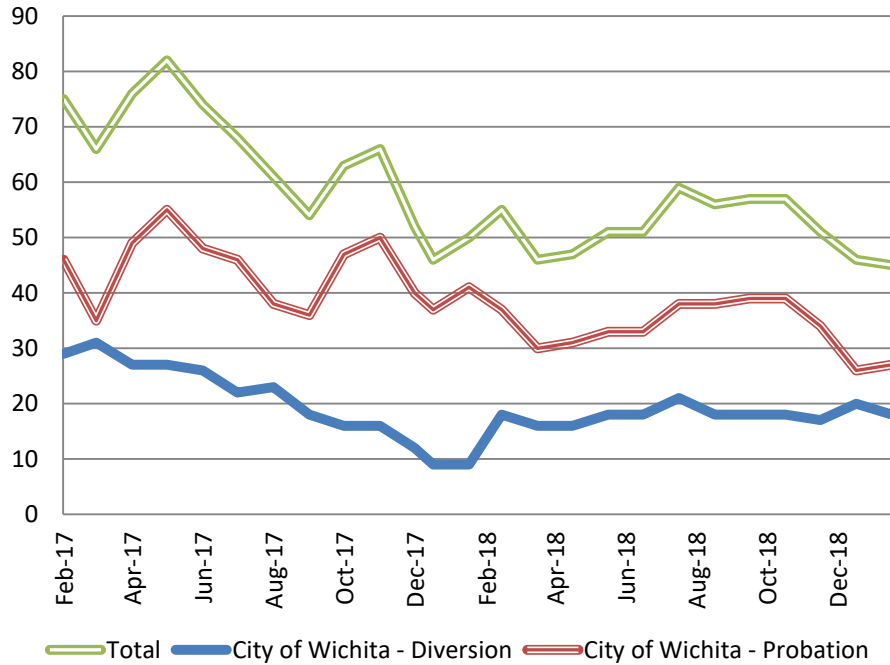
Day Reporting - Active Caseload February 2017 - Present



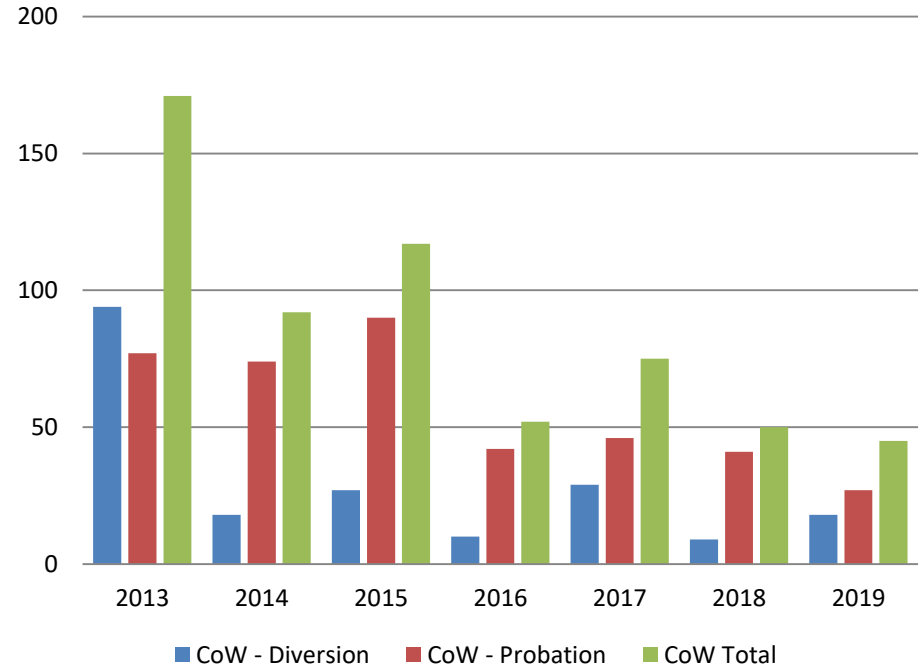
February	2014	2015	2016	2017	2018	2019
Muni. Court	73	71	48	35	38	34
Muni. Court YTD Avg.	77	73	48	35	39	31



Drug Court - City of Wichita ADP: February 2017 - present

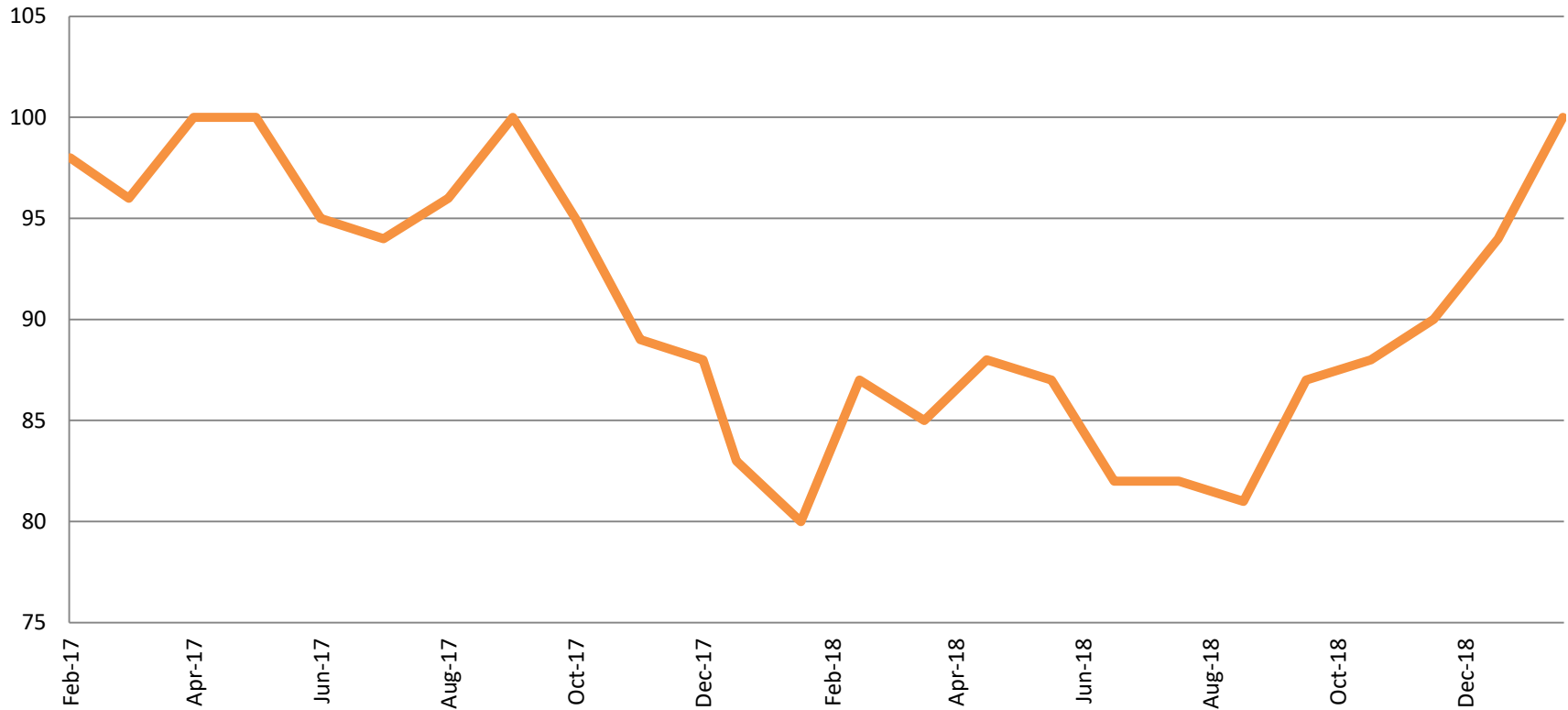


Drug Court- City of Wichita Year over Year - February



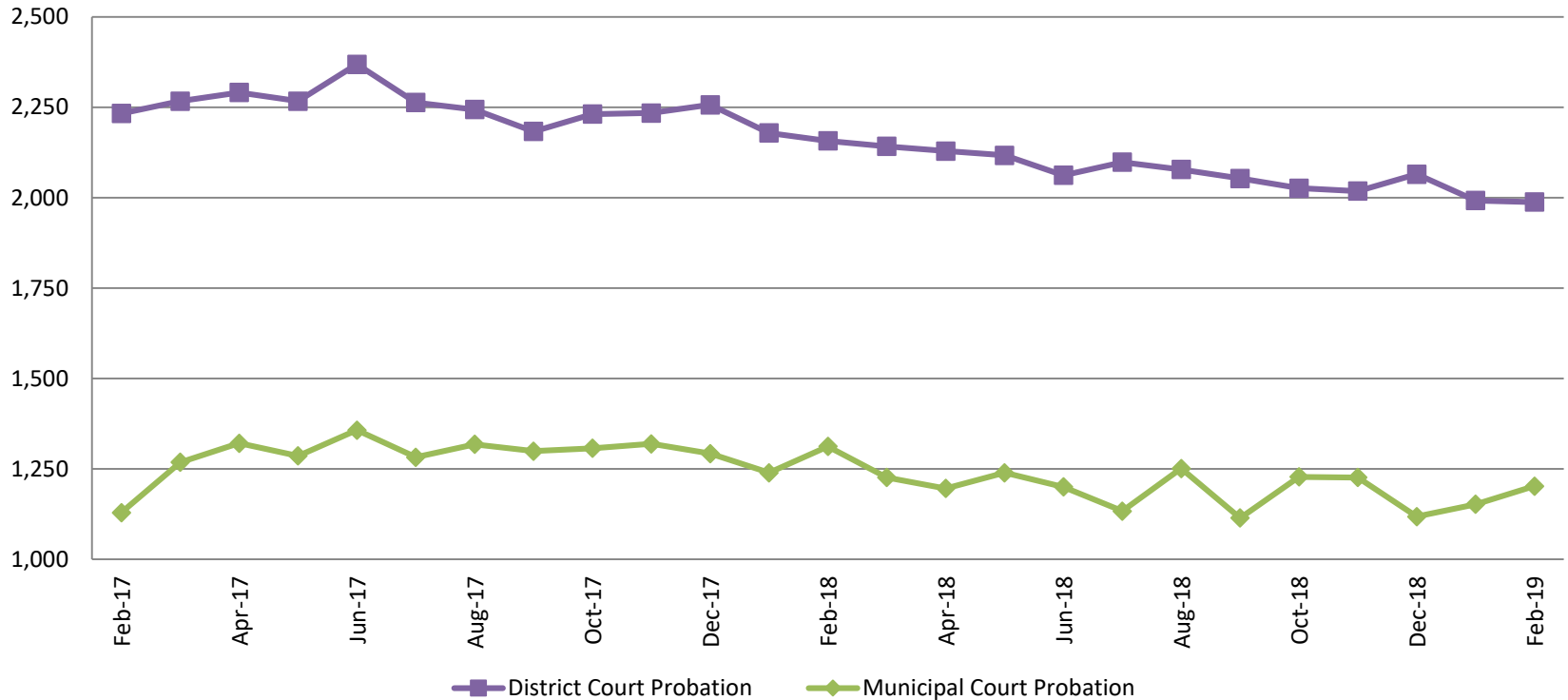
February	2017	2018	2019
Diversion	29	9	18
Probation	46	41	27
Total	75	50	45

Drug Court - Sedgwick County ADP: February 2017 - present



January	2017	2018	2019
Sedg. Co. ADP	98	80	100
YTD Avg.	98	82	97

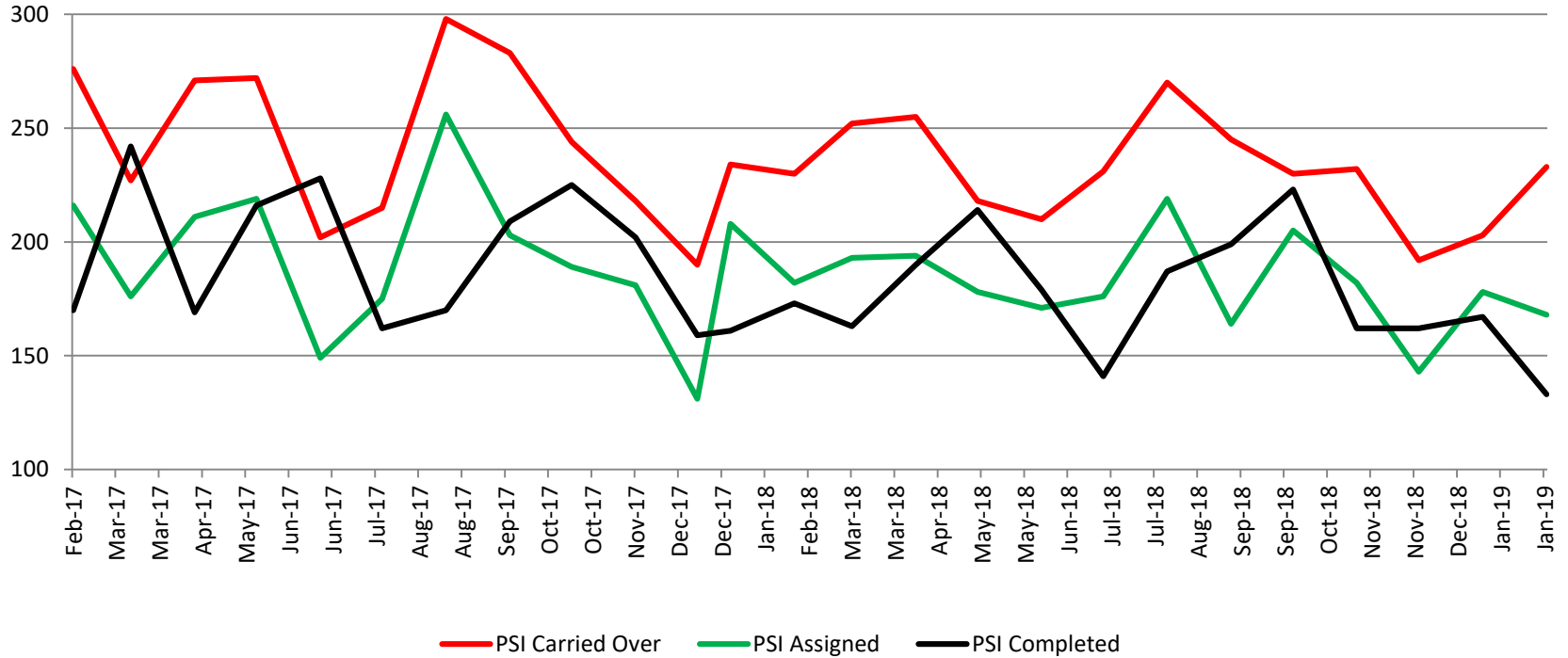
Probation - Active Caseloads February 2017 - present



February	2017	2018	2019	2017 YTD Avg.	2018 YTD Avg.	2019 YTD Avg.
Dist. Court Probation	2,233	2,157	1,988	2,214	2,168	1,990
Muni. Court Probation	1,129	1,312	1,202	1,265	1,276	1,177



District Court Probation: Pre-Sentence Investigation February 2017 - present

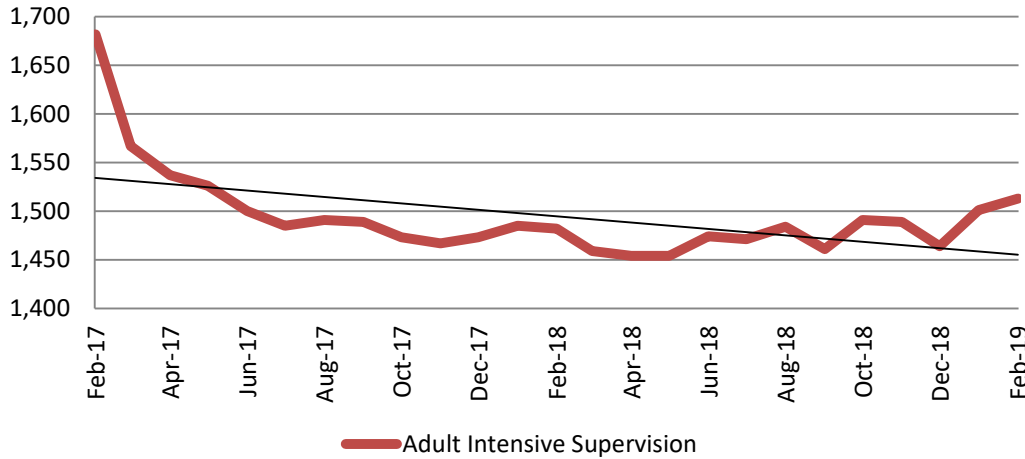


February	2017	2018	2019
Carried Over	276	230	233
Assigned	216	182	173
Completed	170	173	133



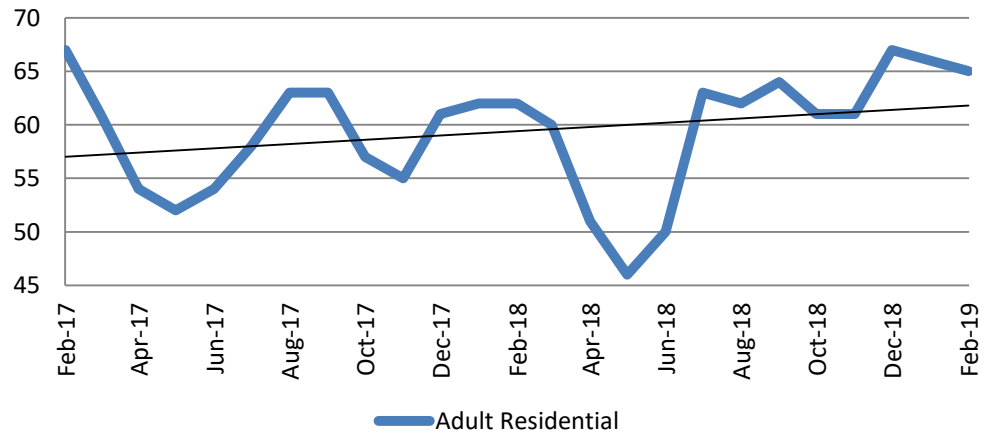
Community Corrections

**Adult Intensive Supervision Probation (AISP):
ADP February 2017- present**



Year	February	February YTD Avg.
2017	1,682	1,651
2018	1,482	1,484
2019	1,513	1,507

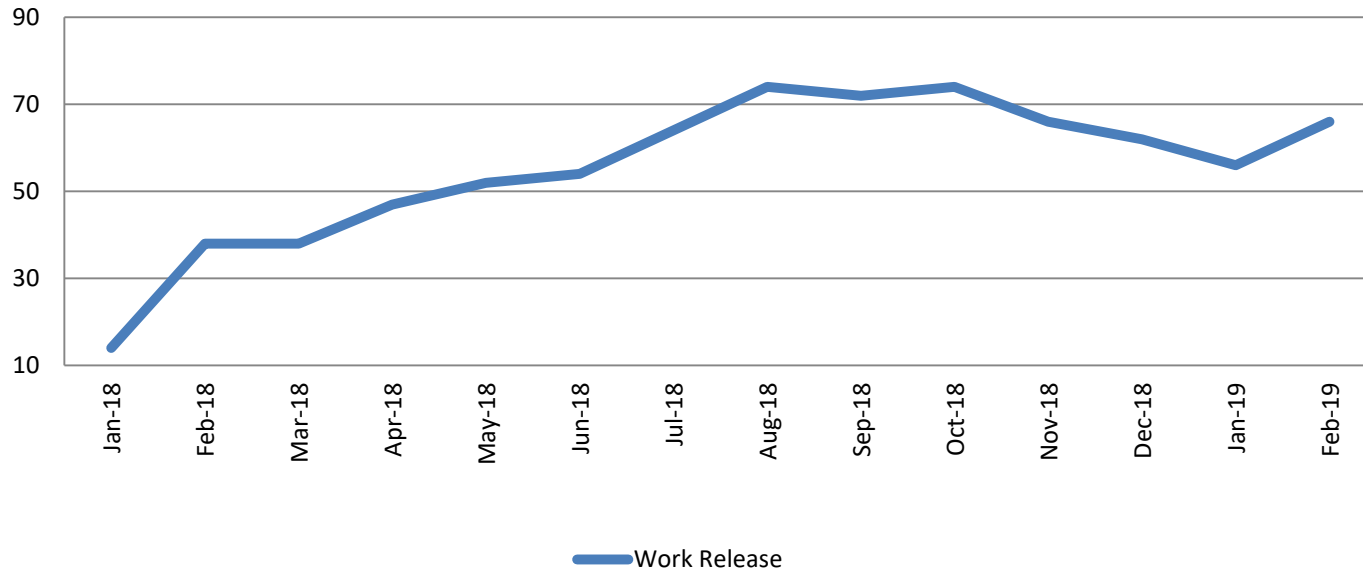
**Adult Residential: ADP
February 2017 - present**



Year	February	February YTD Avg.
2017	67	66
2018	62	62
2019	65	66

Community Corrections

Work Release: ADP February 2018 - present

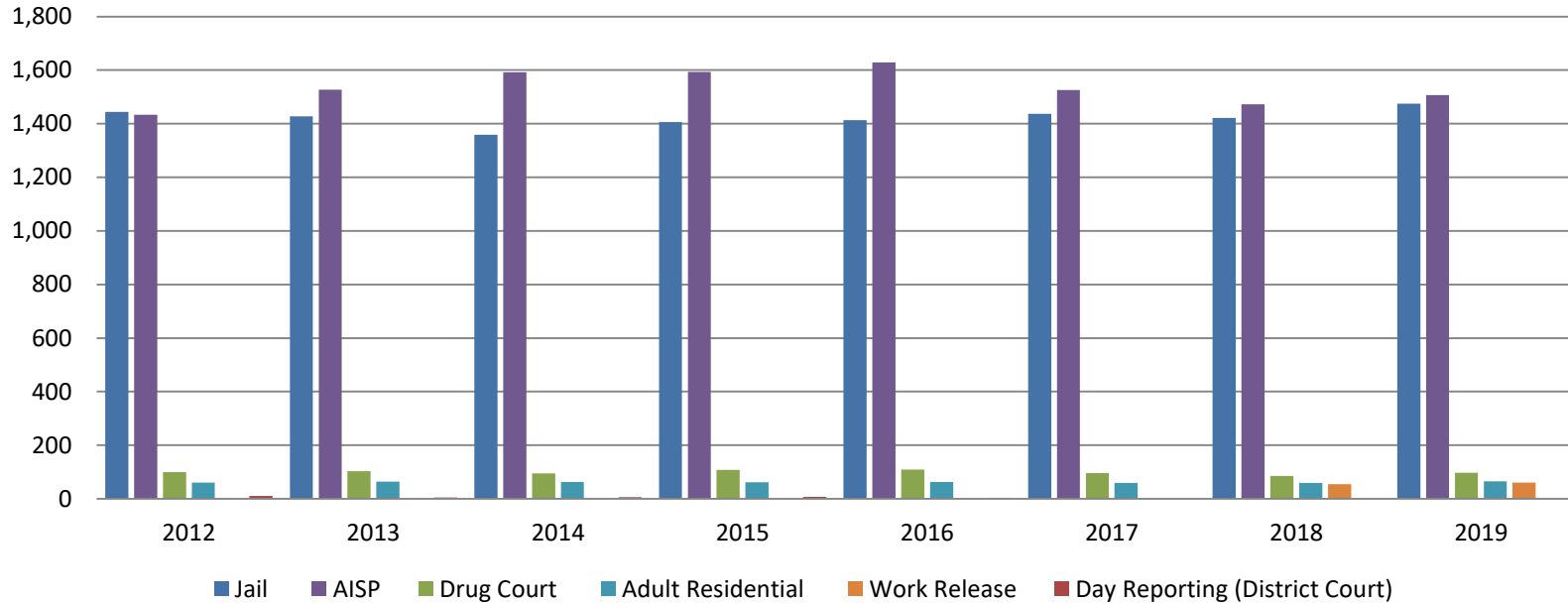


Month Year	Total	YTD Avg.
February 2018	38	26
February 2019	66	61



Correlation: Total & Sedgwick County Programs (Adult)

Total Annual ADP 2012-Present

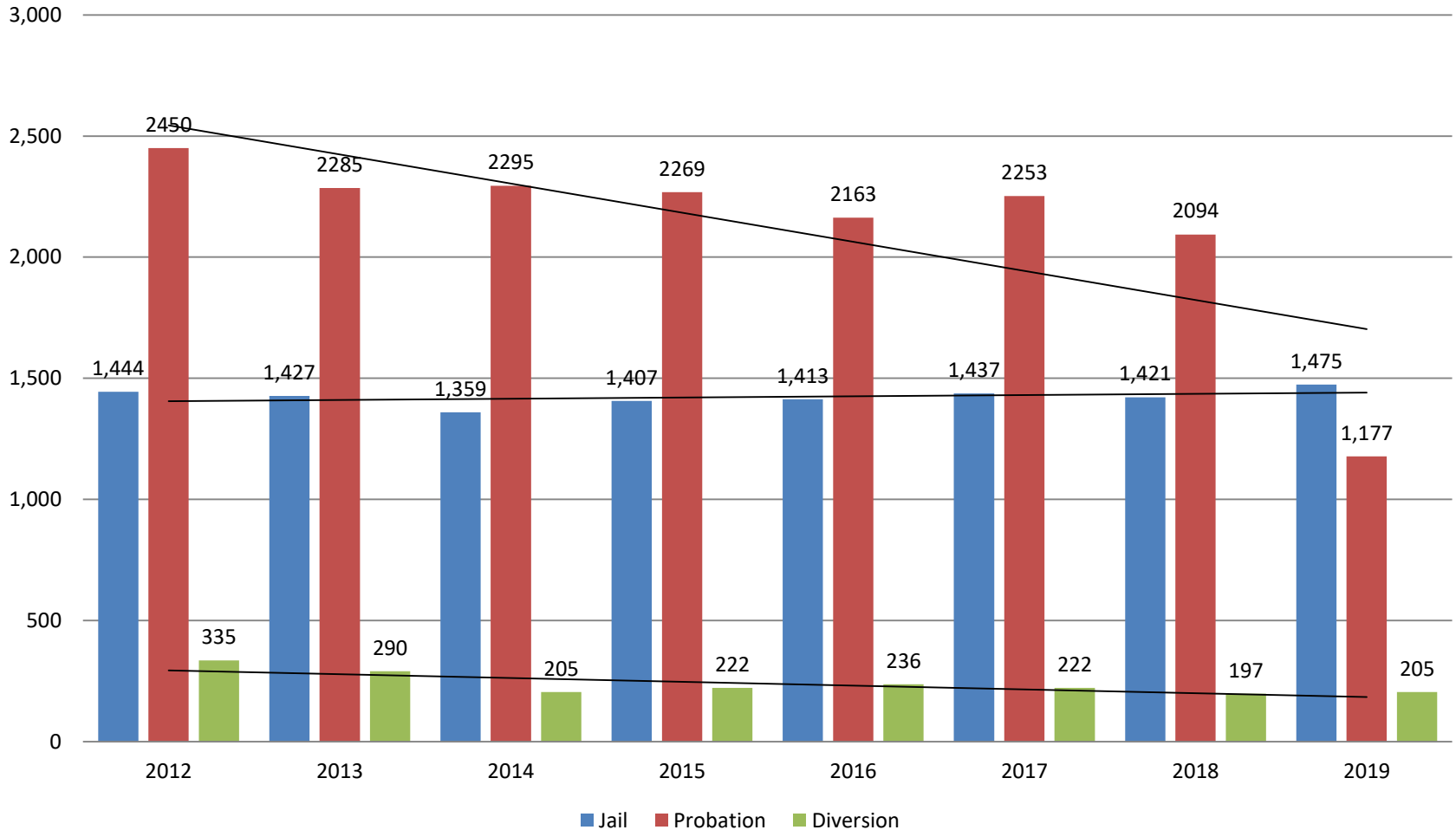


	2017	2018	2019
Jail	1,437	1,421	1,475
AISP	1,526	1,472	1,507
Drug Court	96	85	97
Adult Residential	59	59	66
Work Release	0	55	61
Day Reporting (DC)	0	0	0



Correlation: Total & District Court Programs

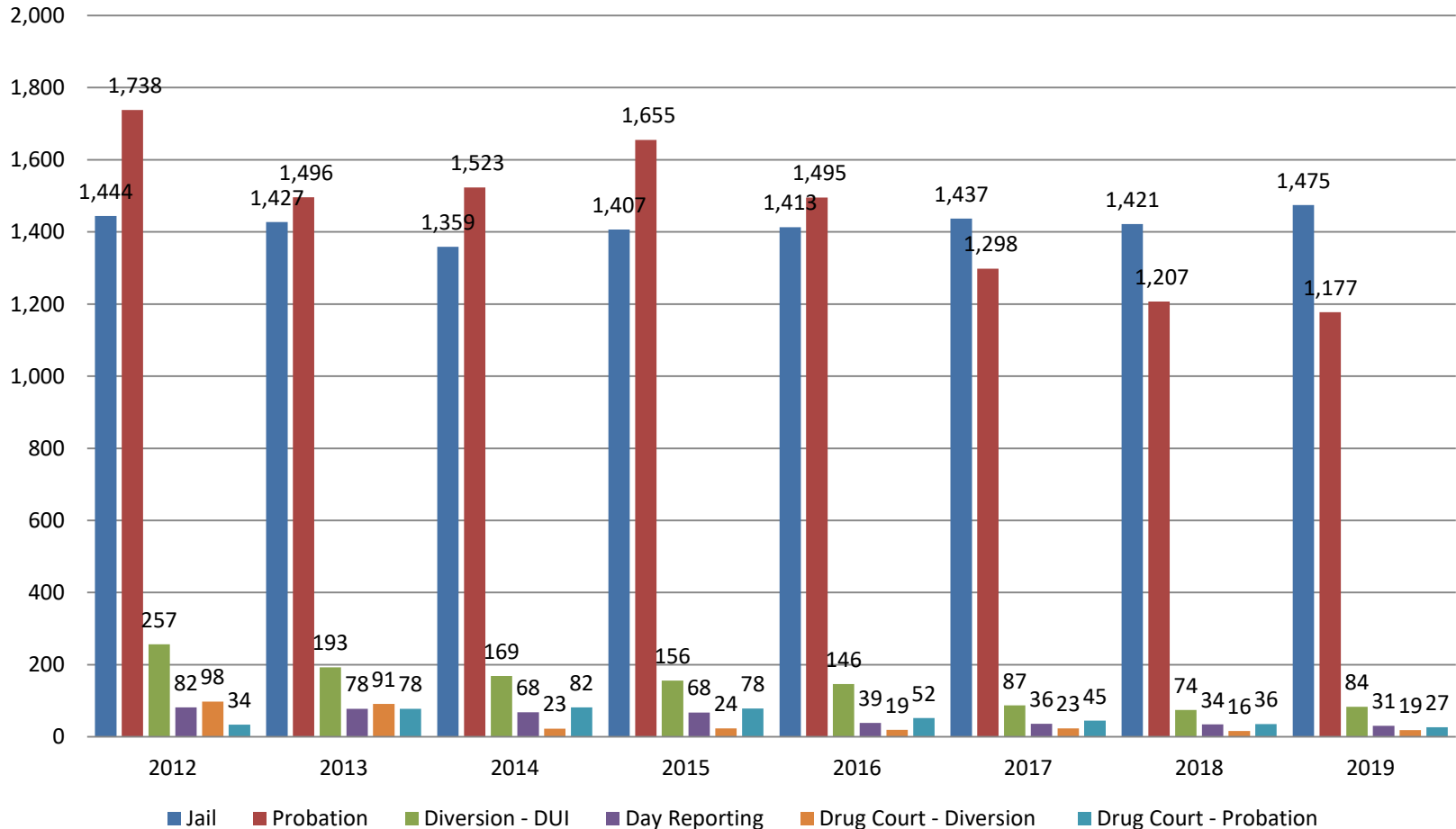
Total Annual ADP: 2012 - Present



Jail includes individuals in booking, detention, work release and out-of county (combined)
 (data obtained from detention facility, DA's Office, & District Court)

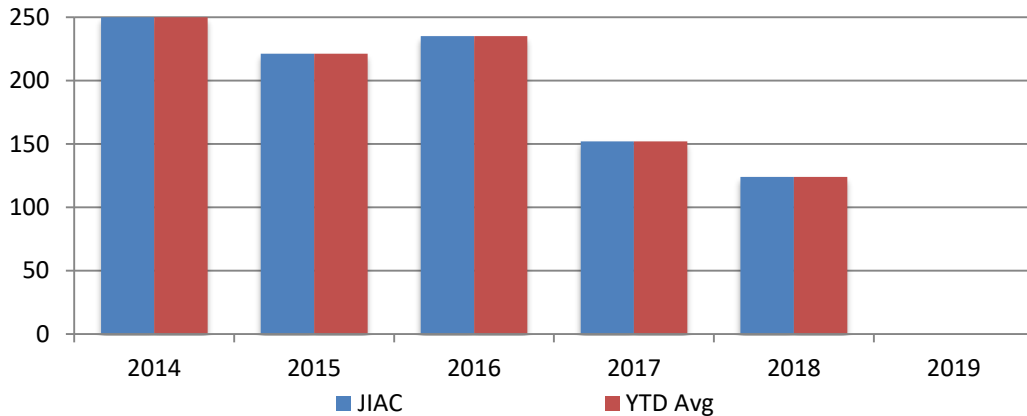
Correlation: Total & City of Wichita / Municipal Court Programs

Total Annual ADP: 2012 - present



Juvenile

JIAC Intakes
January 2014 - present

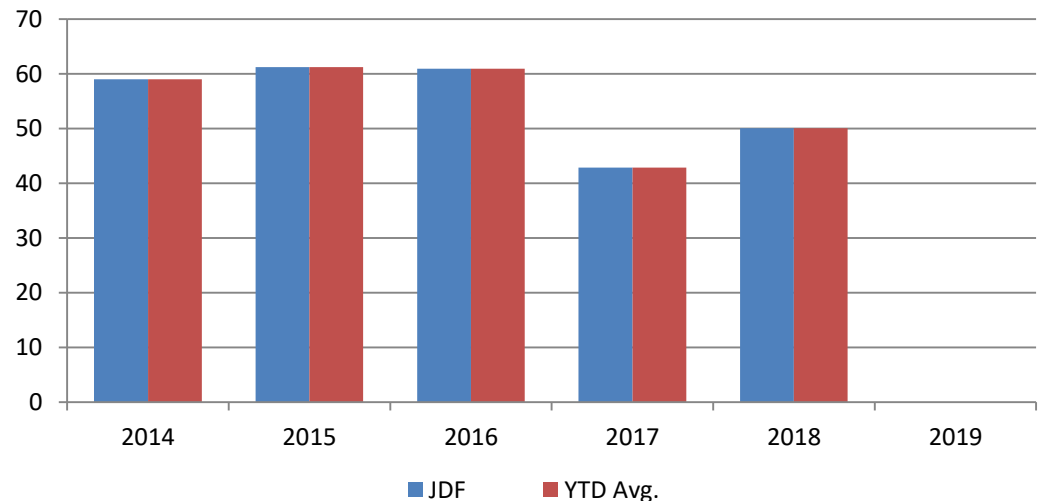


Year	January	January YTD Avg.
2014	250	250
2015	231	231
2016	235	235
2017	152	152
2018	124	124
2019	No Data	No Data

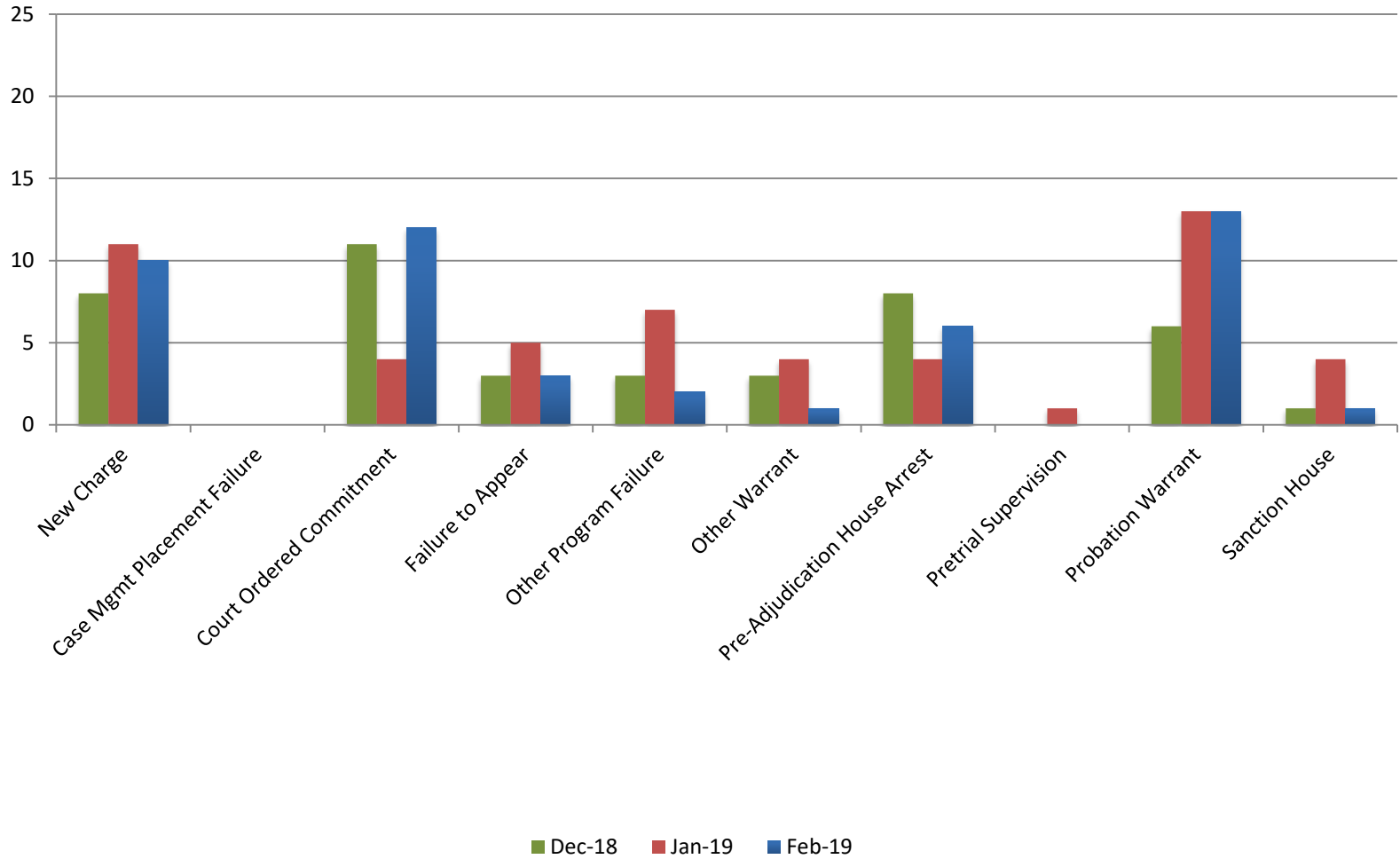
Year **January** **January YTD Avg.**

2014	59	59
2015	61	61
2016	61	61
2017	43	43
2018	50	50
2019	No Data	No Data

JDF ADP
January 2014 - present



Reason for JDF Admits



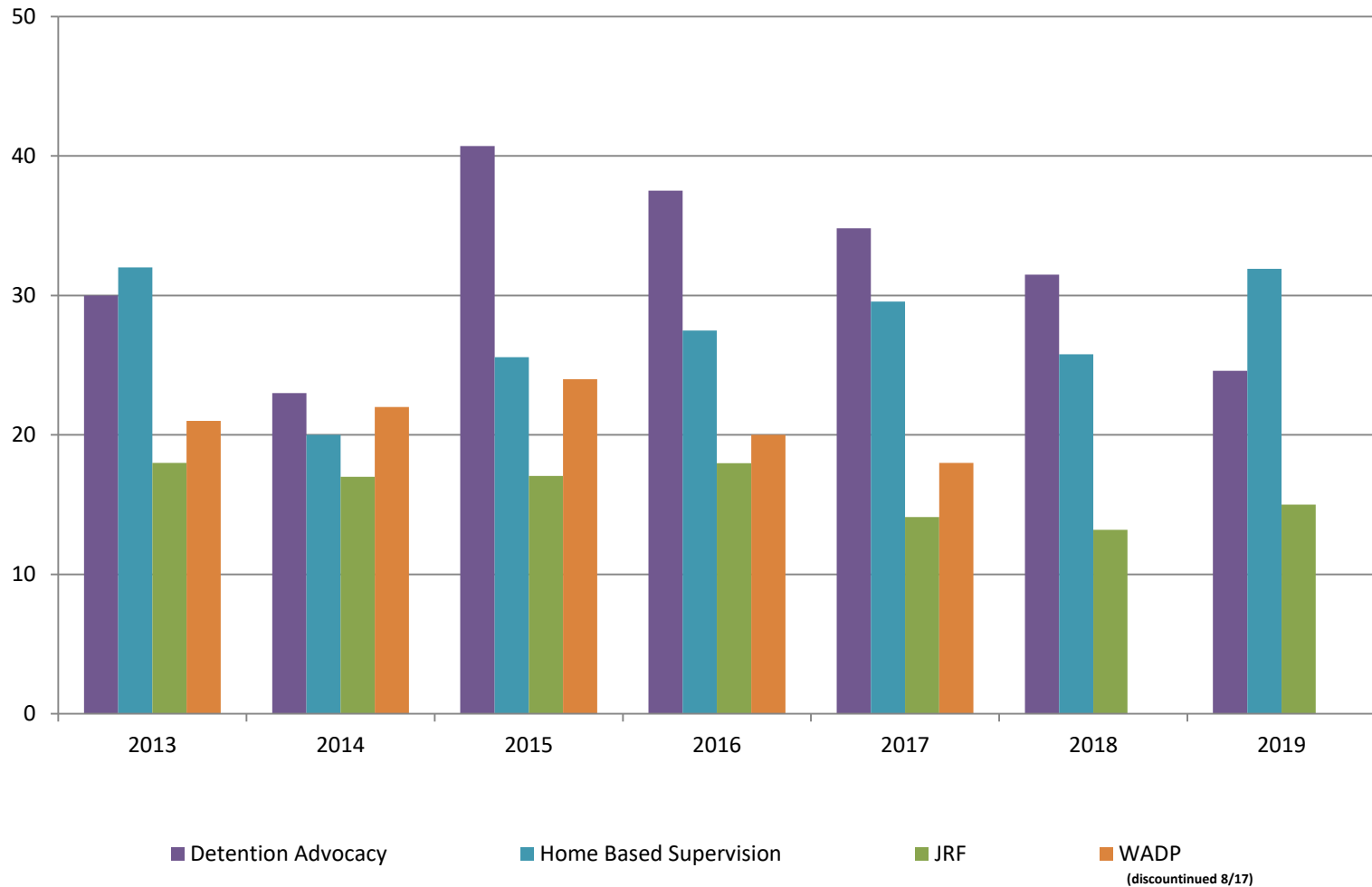
Reason for JDF Admits

Reason	February 2018	February 2019
New Charges	11	10
Case Management Placement Failures	0	0
Court Ordered Commitment	6	12
Failure to Appear	4	3
Other Program Failure	2	2
Other Warrant	6	1
Pre-Adjudication House Arrest	7	6
Pretrial Supervision	2	0
Probation Warrant	4	13
Sanction House	0	1



Juvenile Detention Alternatives

ADP: February 2013- Present



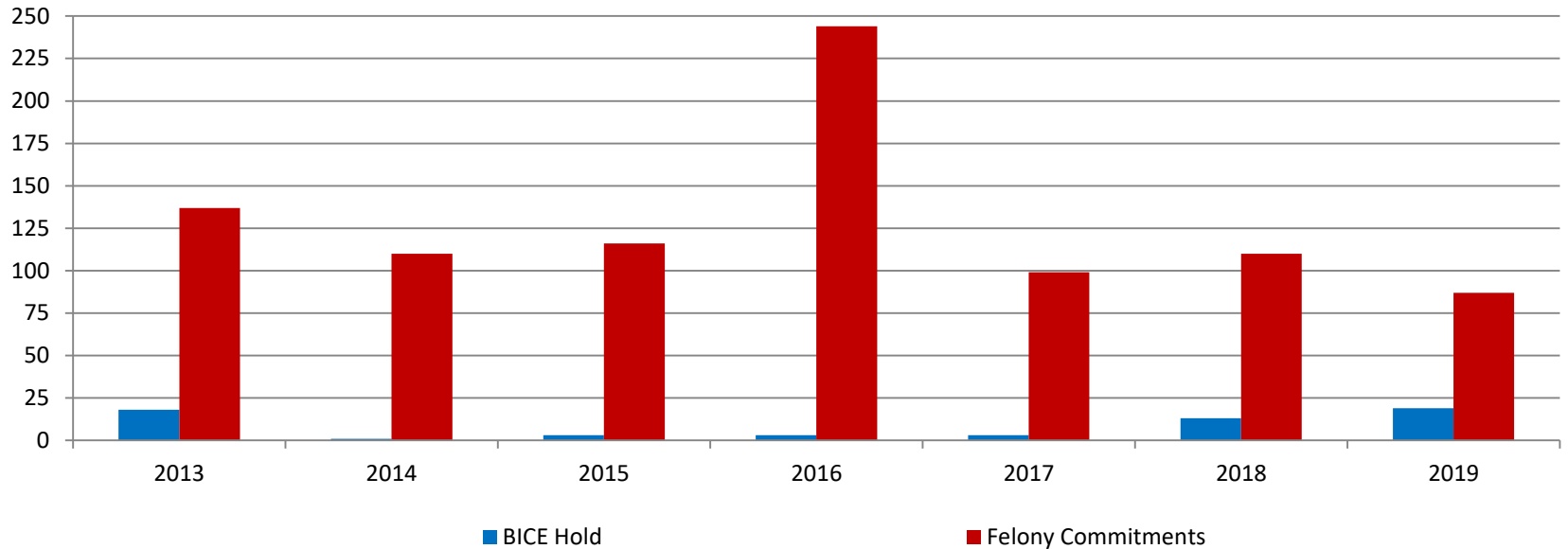
Juvenile Detention Services

February ADP	2016	2017	2018	2019
Juvenile Detention Facility	56	50	49	45
Juvenile Residential Facility	13	13	12	14
Home Based Supervision	28	23	30	28
Detention Advocacy Case Management Services	38	35	32	25
Weekend Alternative Detention Program (total)	18	17	0	N/A

February YTD AVERAGE	2016	2017	2018	2019
Juvenile Detention Facility	58	47	50	48
Juvenile Residential Facility	16	13	13	15
Home Based Supervision	28	26	28	30
Detention Advocacy Case Management Services	40	38	33	27
Weekend Alternative Detention Program	17	18	0	N/A

Monthly Jail Snapshot: February 28, 2019

Snapshots February 2013 - Present

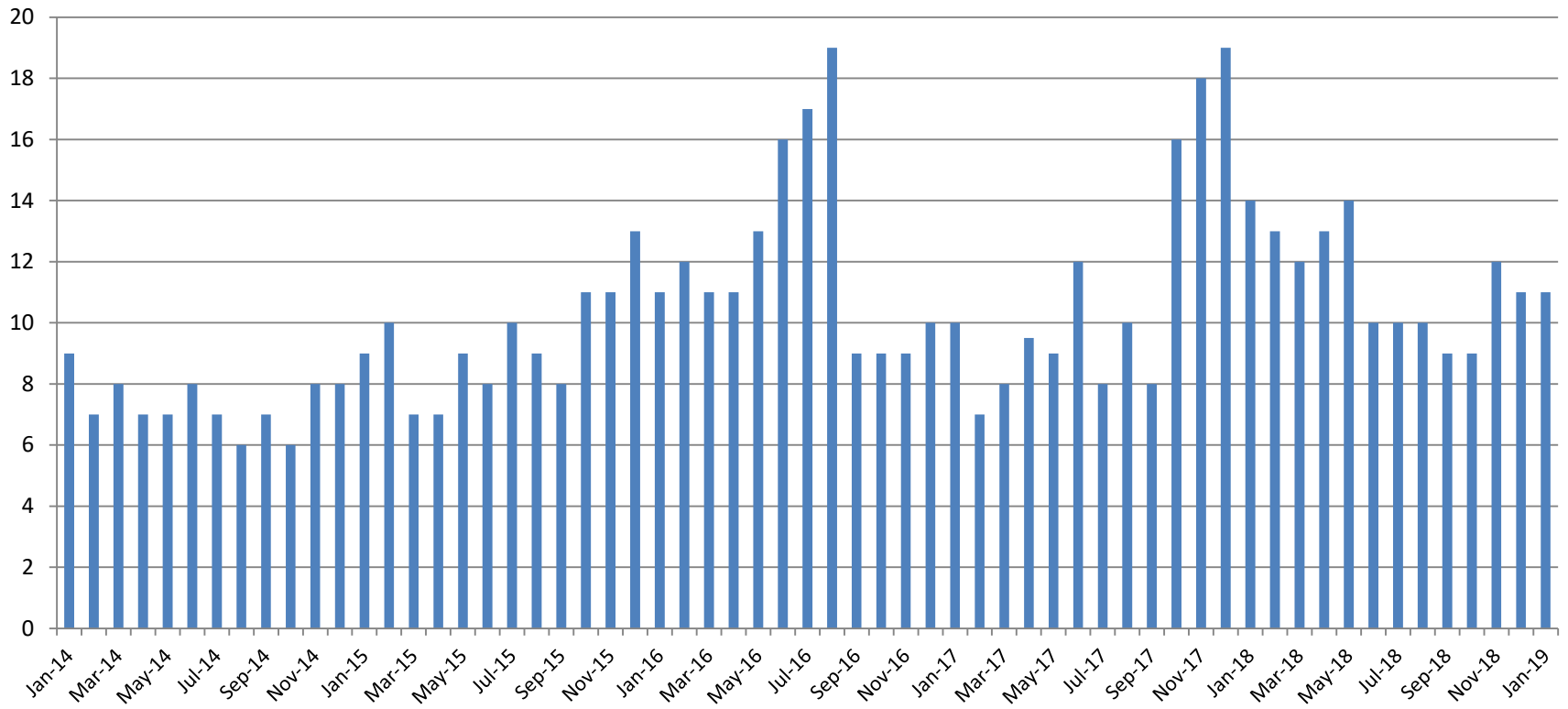


BICE Hold	2013	2014	2015	2016	2017	2018	2019
February	17	1	5	4	10	19	24

Felony Commitments	2013	2014	2015	2016	2017	2018	2019
February	137	110	116	244	99	110	87



Journal Entry Completion (Average Days) January 2014-Present



January	2014	2015	2016	2017	2018	2019
Avg. Days	9	9	11	10	14	11
YTD Avg.	9	9	11	10	14	11

