

Criminal Justice Coordinating Council

Population Report & Program Trends

April 2021

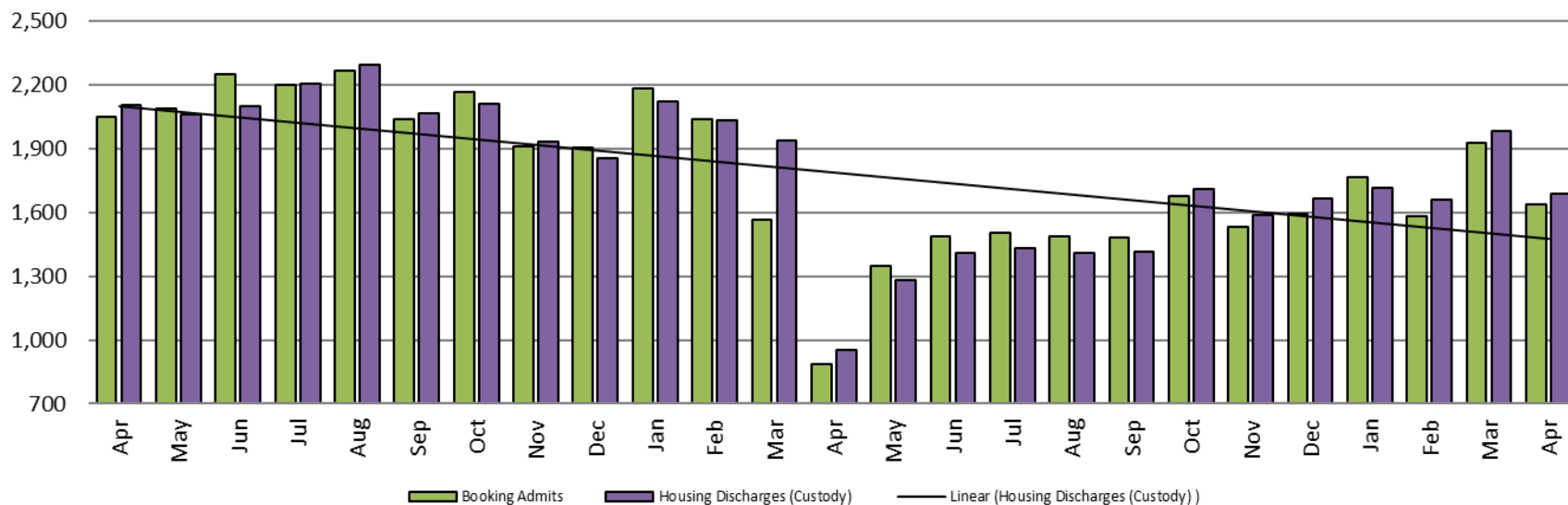


Sedgwick County...
working for you

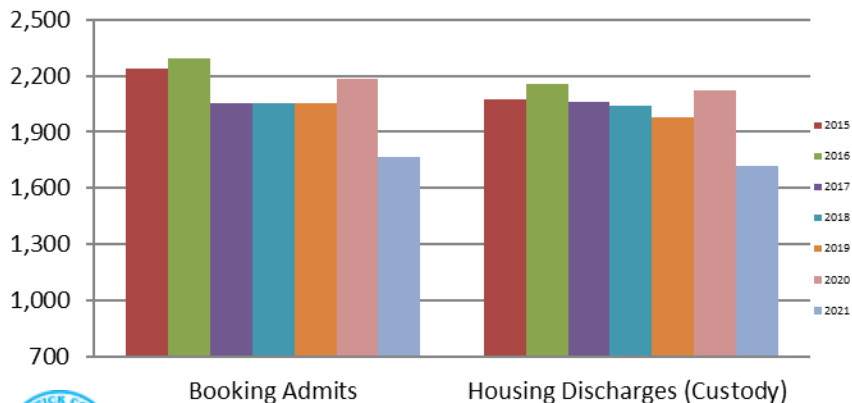
Detention Facility

Booking Admits & Housing Discharges from Custody

April 2019 - present



Bookings Year over Year: Month of April



Bookings April

2019: 2,052

2020: 889

2021: 1,640

Housing Discharges April

2019: 2,108

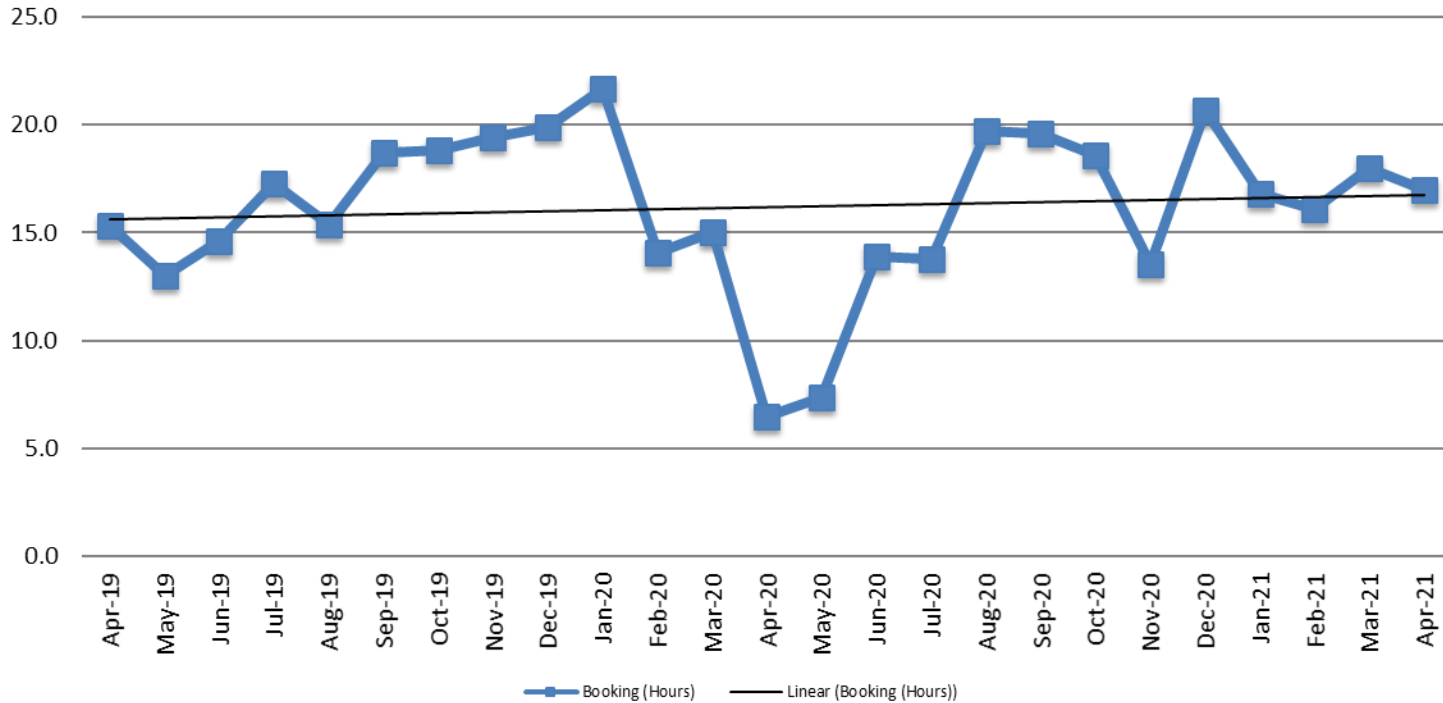
2020: 953

2021: 1,690



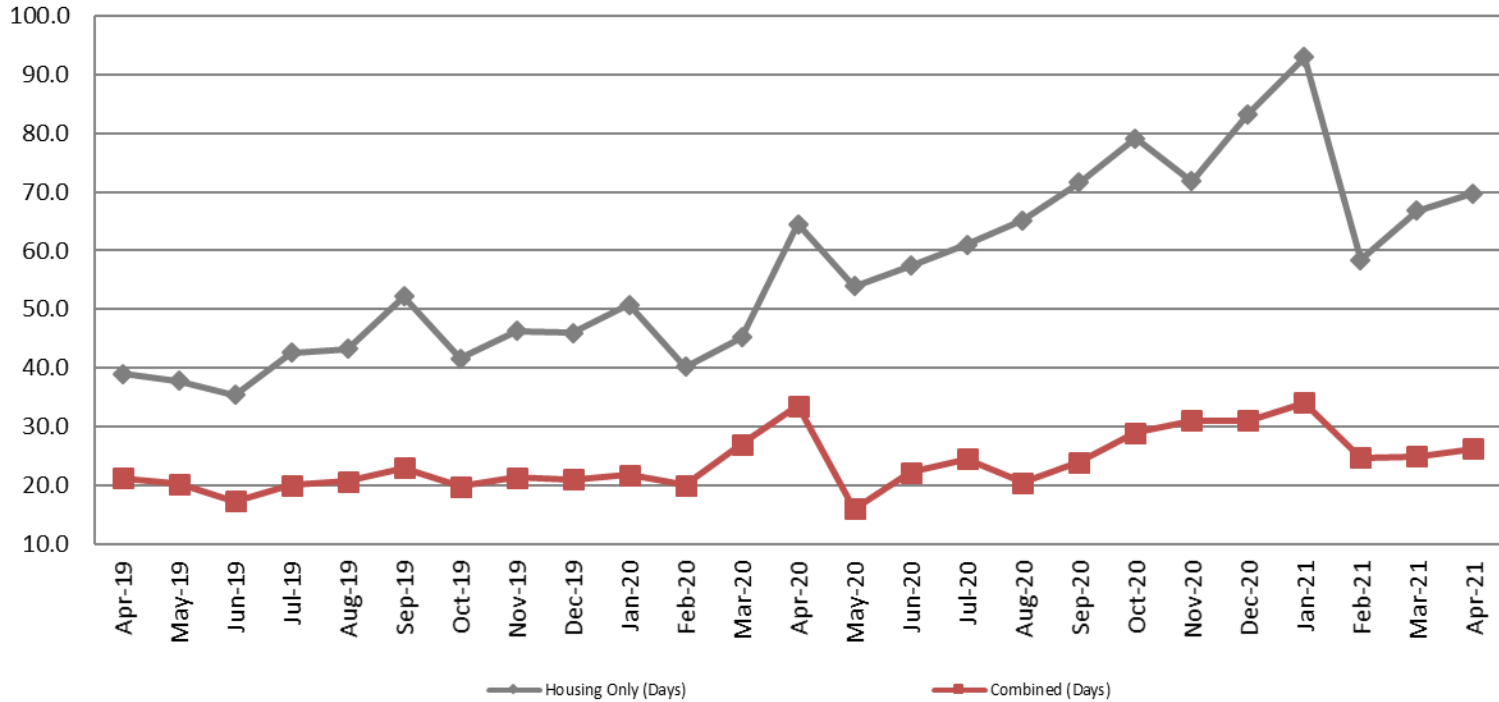
Sedgwick County...
working for you

Average Length of Stay: Booking (Hours) April 2019 - present



April	April YTD Average
2019: 15.3	2019: 12.3
2020: 6.5	2020: 14.3
2021: 17	2021: 17.0

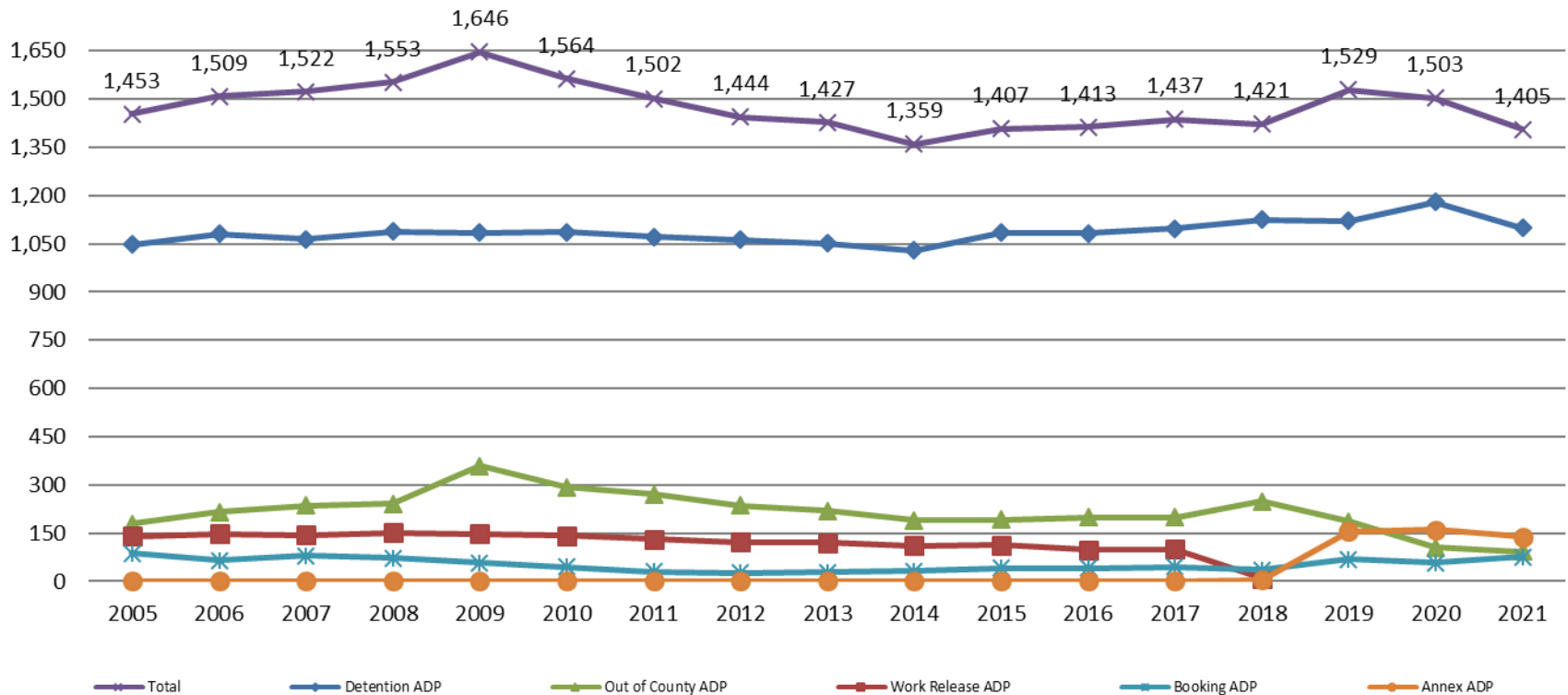
Average Length of Stay: Housing & Combined (Days) April 2019 - present



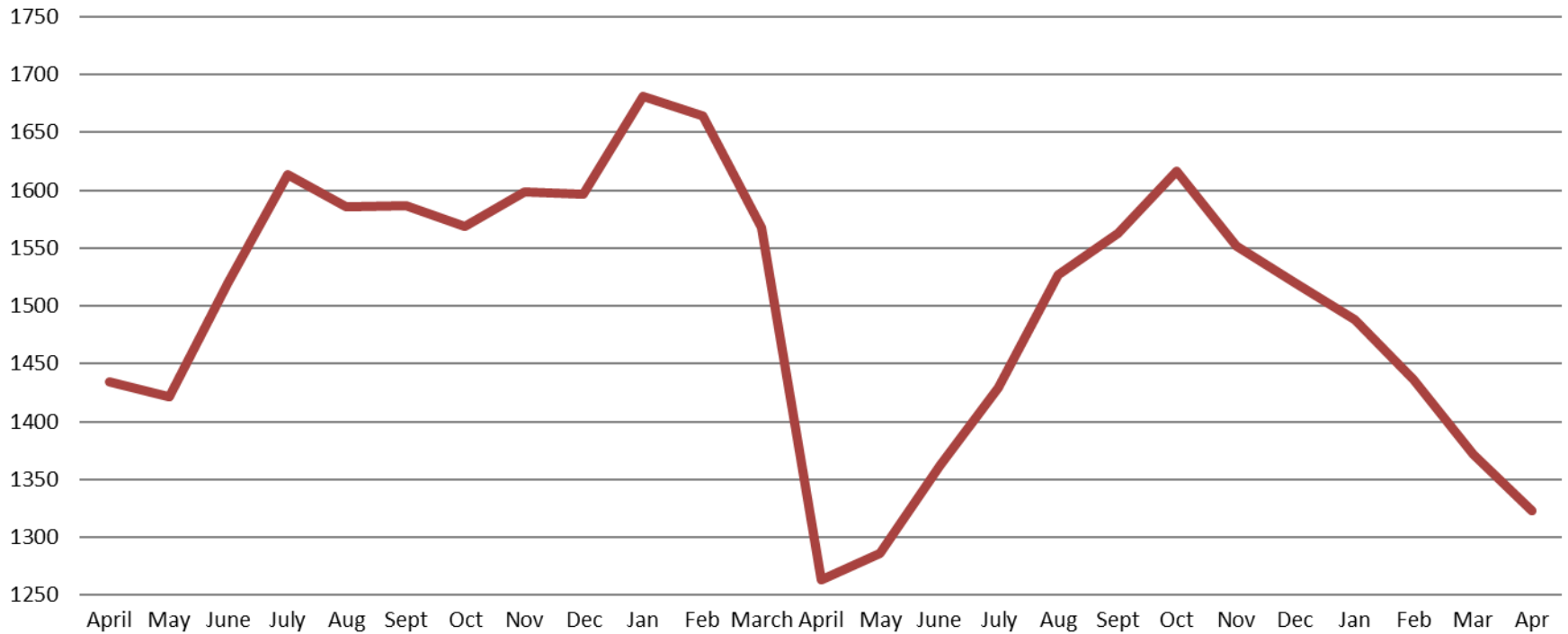
Month Year	Housing Only	Housing YTD AVG	Combined Days	Combined YTD AVG
April 2019	39.0	39.8	21.2	21.2
April 2020	64.6	50.2	33.5	25.6
April 2021	69.8	72.0	26.2	27.5

Jail: Annual Average Daily Population (ADP)

**TRENDS: Booking, Detention, Work Release, & Out of County Annual ADP:
2005 - present**



TOTAL MONTHLY ADP: JAIL (Booking, Detention Facility, Annex, & Out of County) April 2019 - present

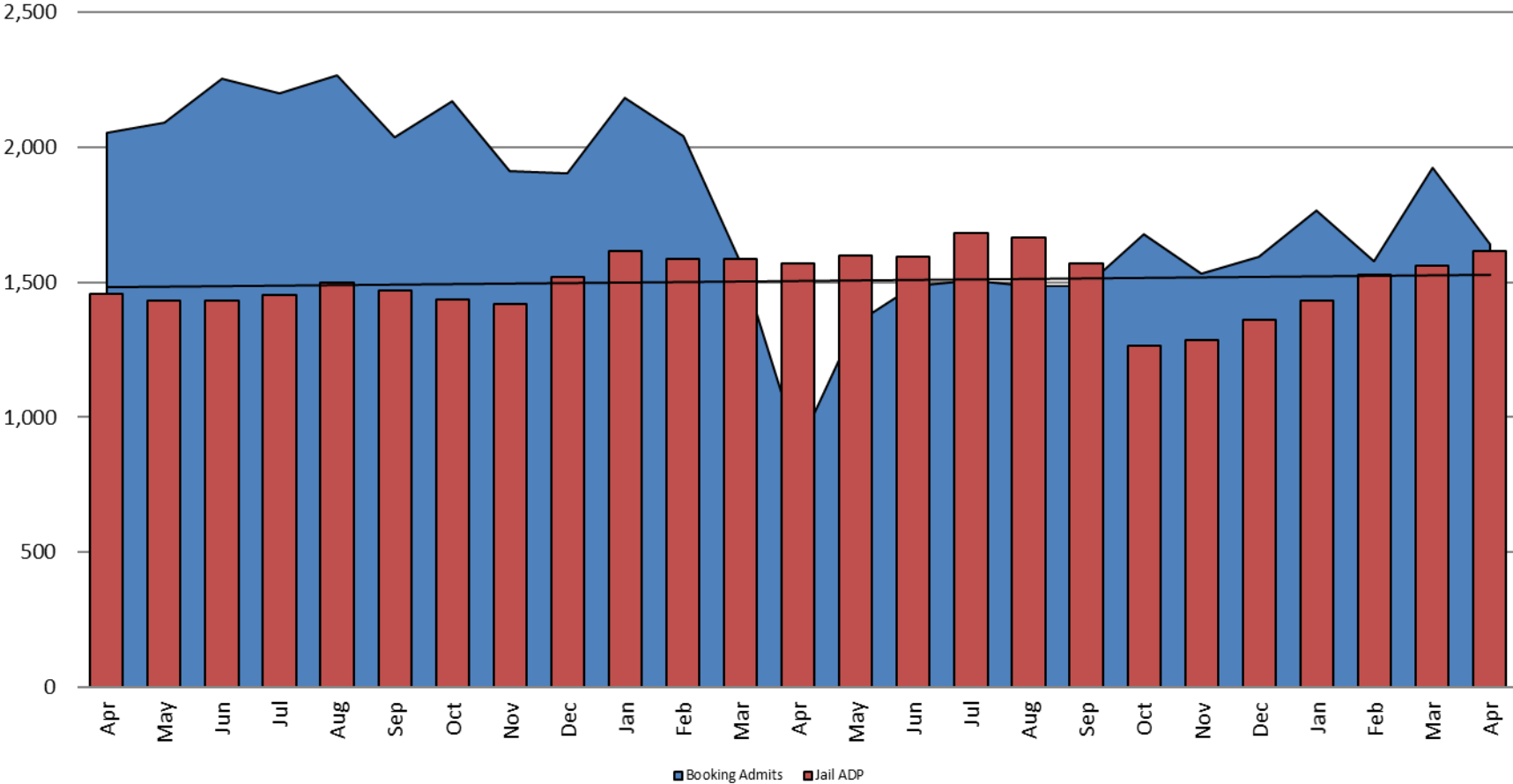


April 2019	April 2020	April 2021
1,434	1,263	1,323

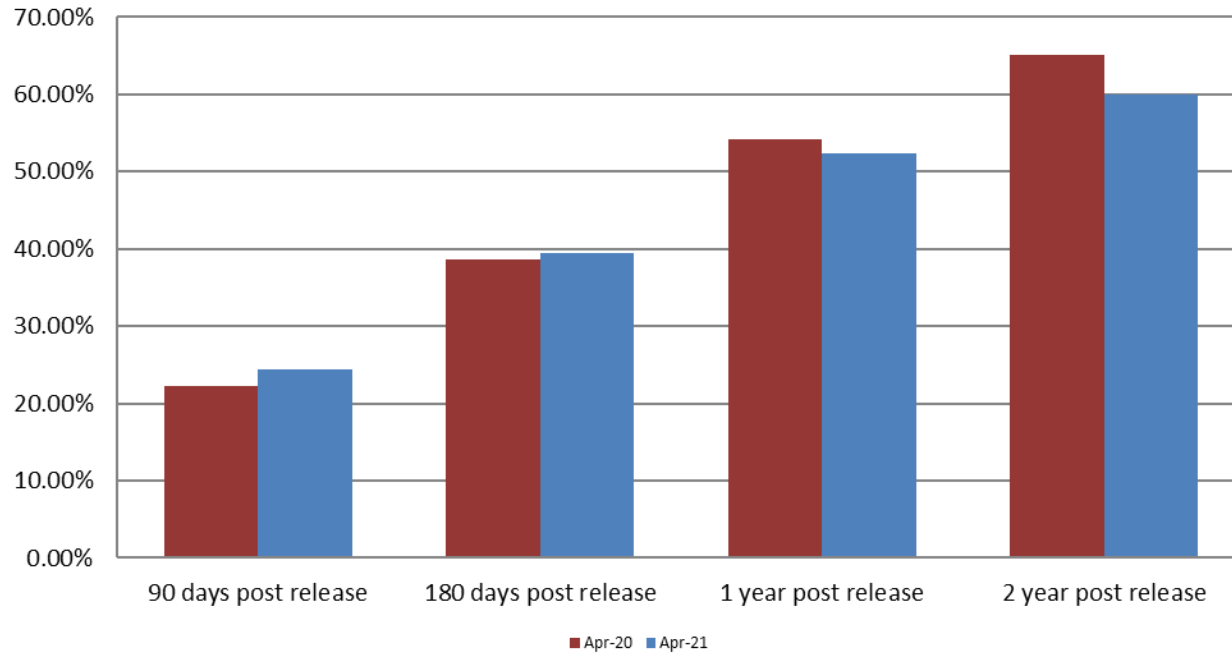


*Beginning January 2018, Work Release program began transfer to Division of Corrections
This slide shows total monthly ADP for individuals in booking, detention, work release, jail annex, and out-of county (combined)
(data obtained from detention facility)

Booking Admits & Total Monthly ADP (Jail): April 2019 - present



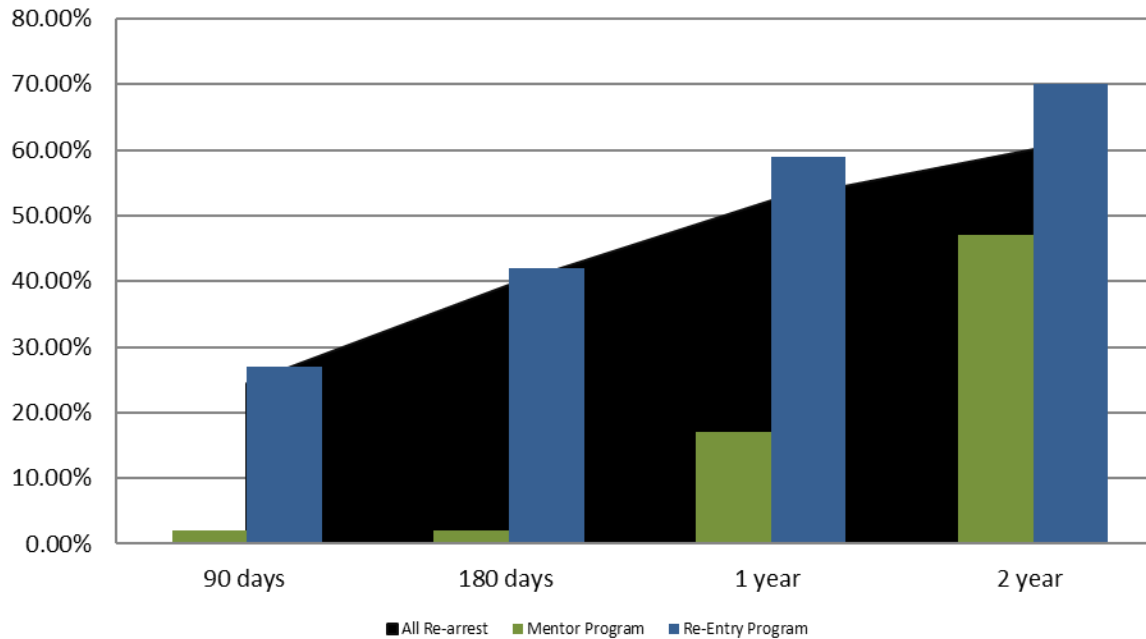
Percent of released inmates rearrested April



Month Year	90 Days	180 Days	1 Year	2 Years
April 2020	22.24%	38.59%	54.26%	65.07%
April 2021	24.37%	39.51%	52.36%	60.02%



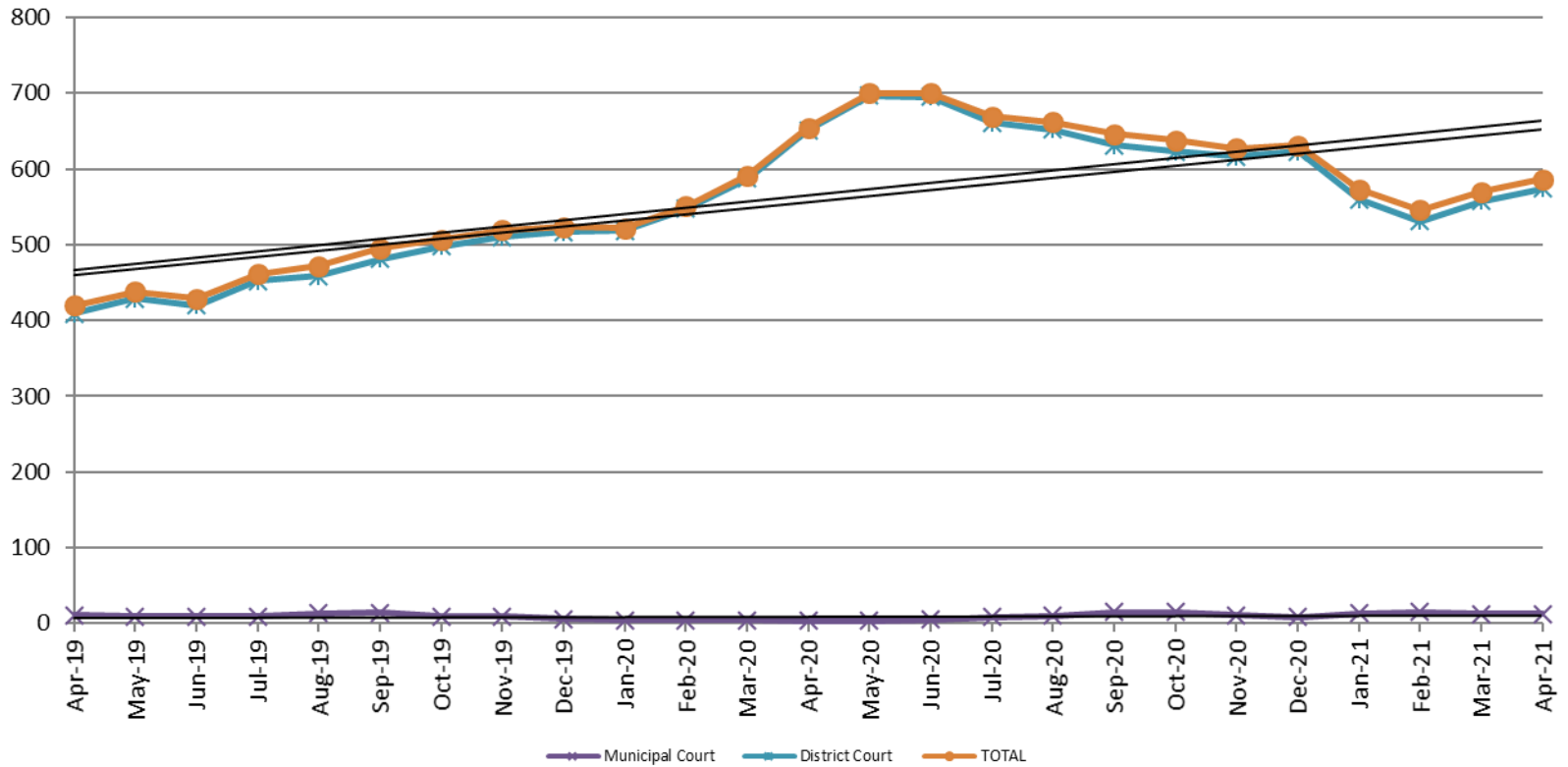
Recidivism by Programs April 2021



April 2021	90 Days	180 Days	1 year	2 years
All Re-arrests	25.87%	38.34%	49.07%	57.58%
Mentor Program	2%	2%	17%	47%
Re-Entry Program	27%	42%	59%	70%



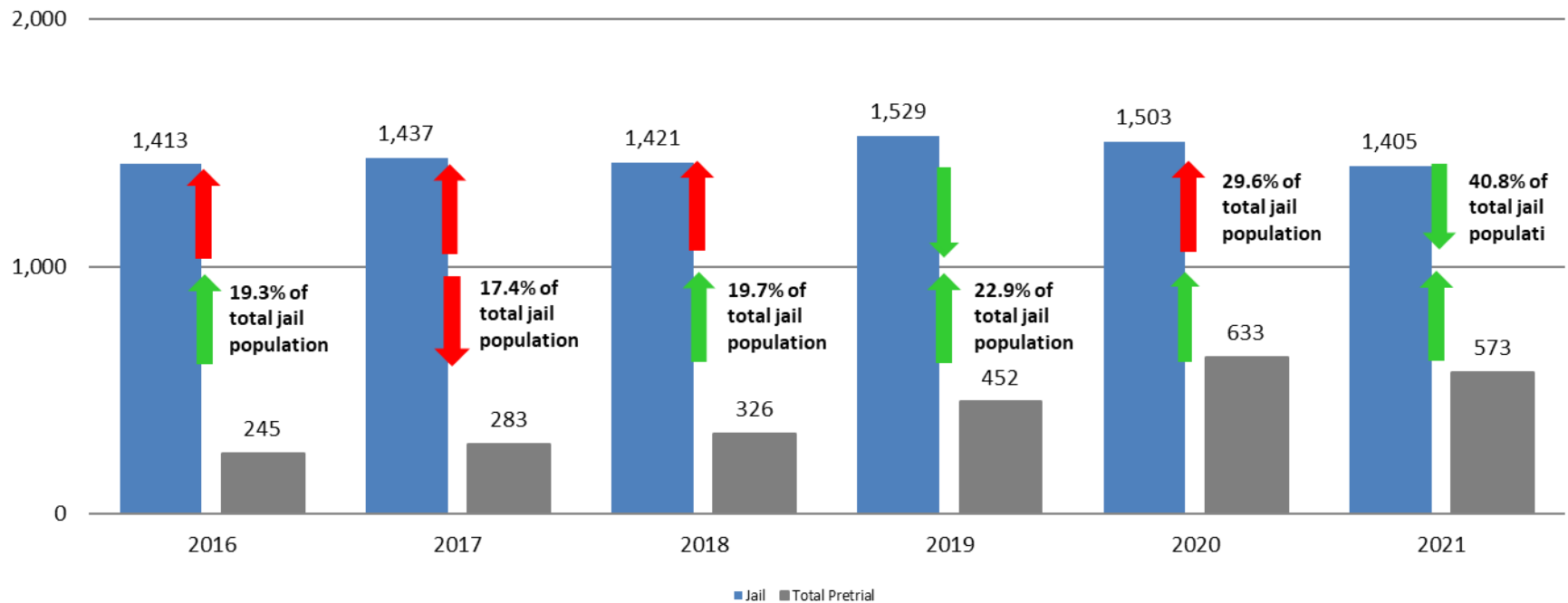
Pretrial Services Program (PSP) Monthly ADP: April 2019 - present



April	2019 ADP	2020 ADP	2021 ADP	2019 YTD Avg.	2020 YTD Avg.	2021 YTD Avg.
Muni. Court	11	3	12	16	4	13
Dist. Court	409	651	574	378	576	555.5
Total	420	654	586	396	580	568.75

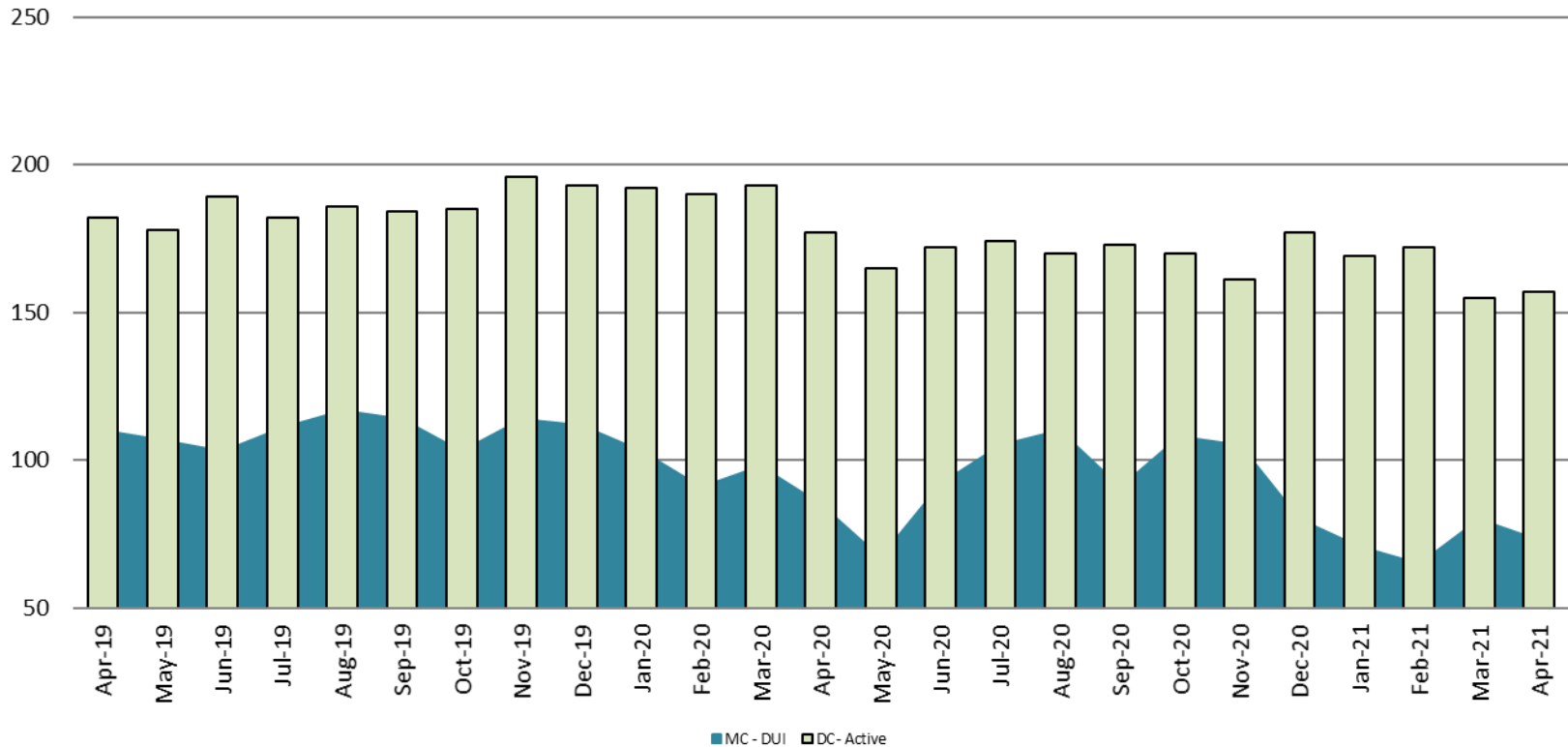
Correlation: Total & PSP

Total Annual ADP: 2016 - present



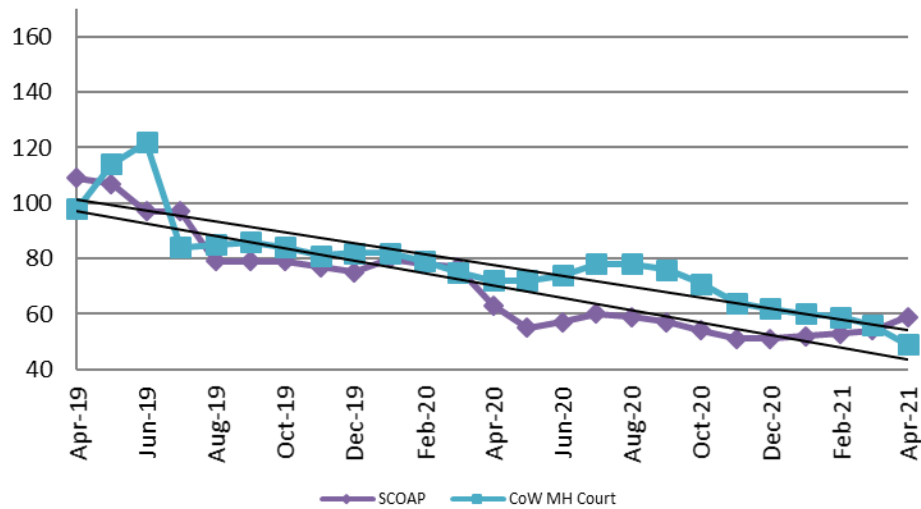
Diversion - Active Caseload

April 2019 - present

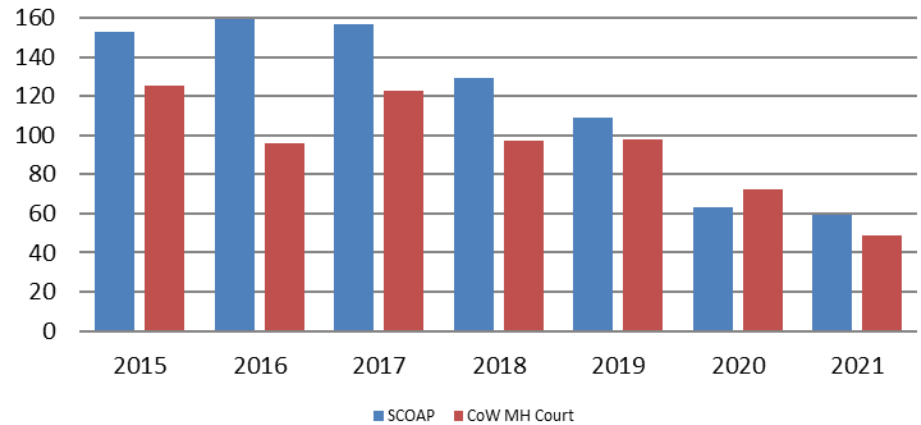


April	2019	2020	2021	2019 YTD Avg.	2020 YTD Avg.	2021 YTD Avg.
Muni. Court- DUI	110	85	73	95	94	72
Dist. Court- Active	182	177	157	198	188	163

Mental Health - ADP April 2019 - present

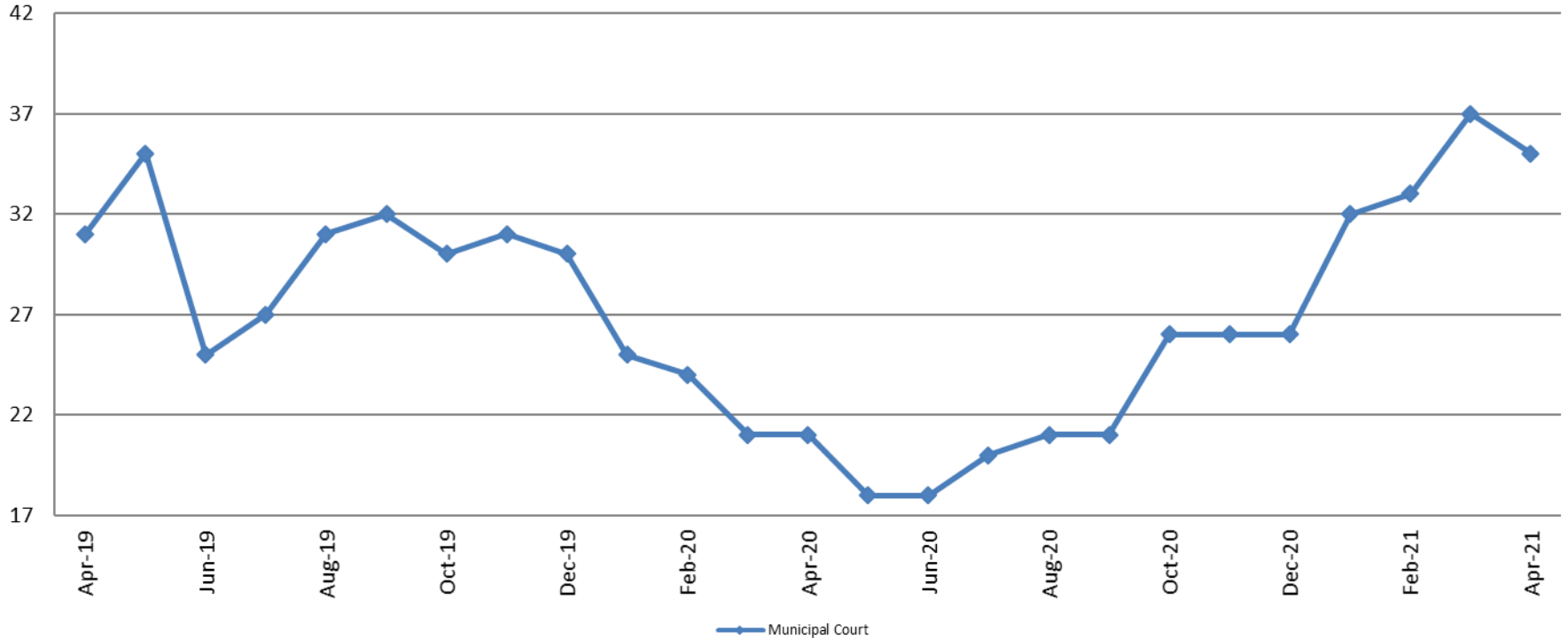


Mental Health ADP Year over Year - April



April	2019 ADP	2020 ADP	2021 ADP	2019 YTD Avg.	2020 YTD Avg.	2021 YTD Avg.
SCOAP	109	63	59	122	75	55
MH Court	98	72	49	97	77	56

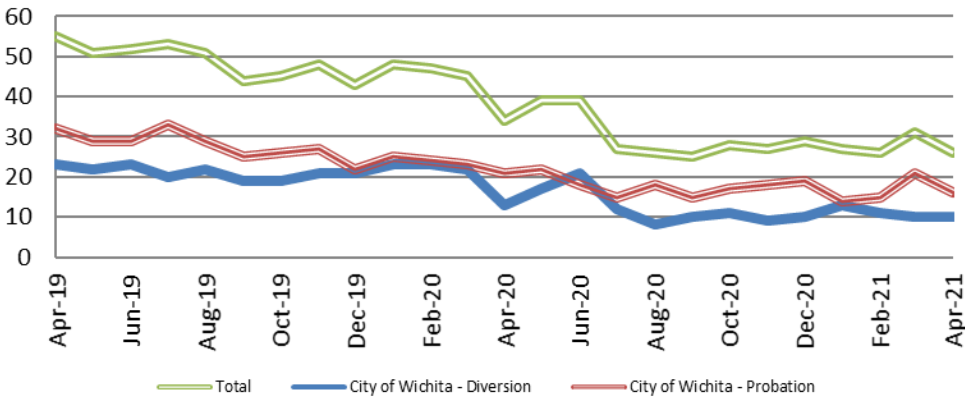
Day Reporting - Active Caseload April 2019 - present



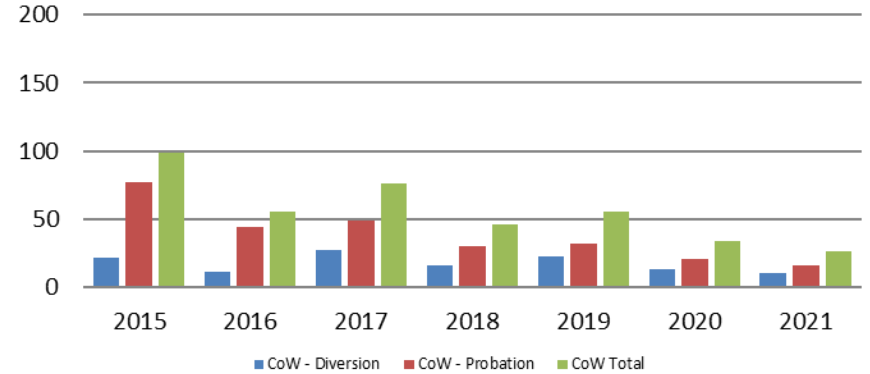
April	2016	2017	2018	2019	2020	2021
Muni. Court	50	31	38	31	21	35
Muni. Court YTD Avg.	48	33	39	31	23	34



Drug Court - City of Wichita ADP: April 2019 - present



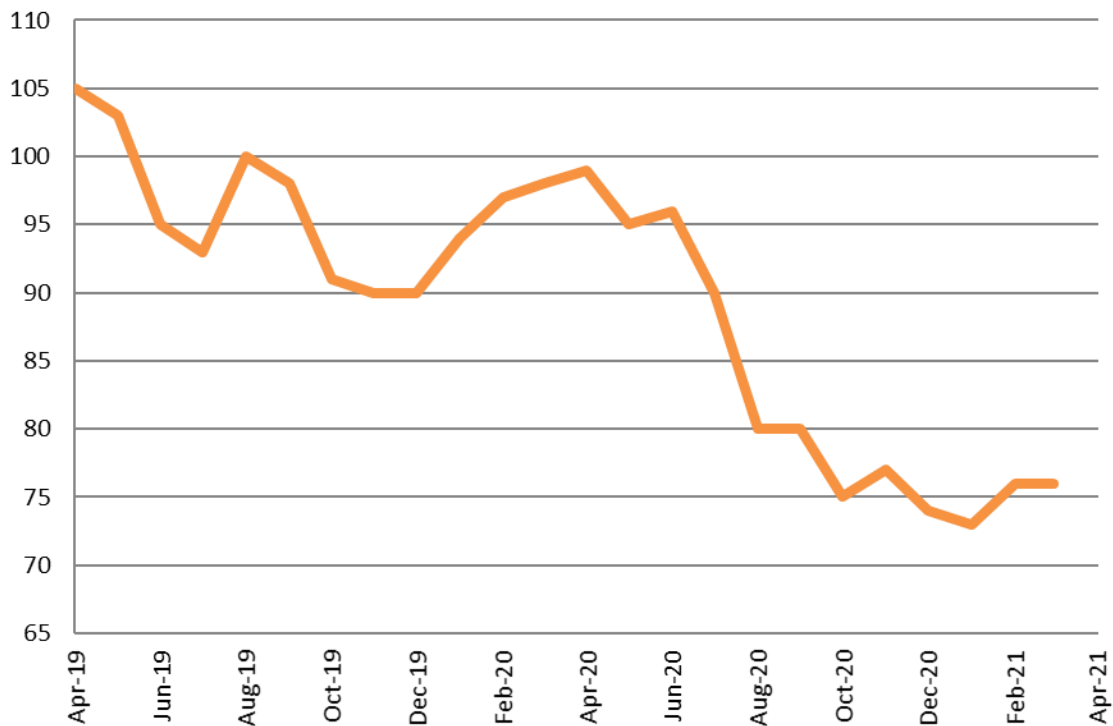
Drug Court- City of Wichita Year over Year - April



April	2019	2020	2021
Diversion	23	13	10
Probation	32	21	16
Total	55	34	26



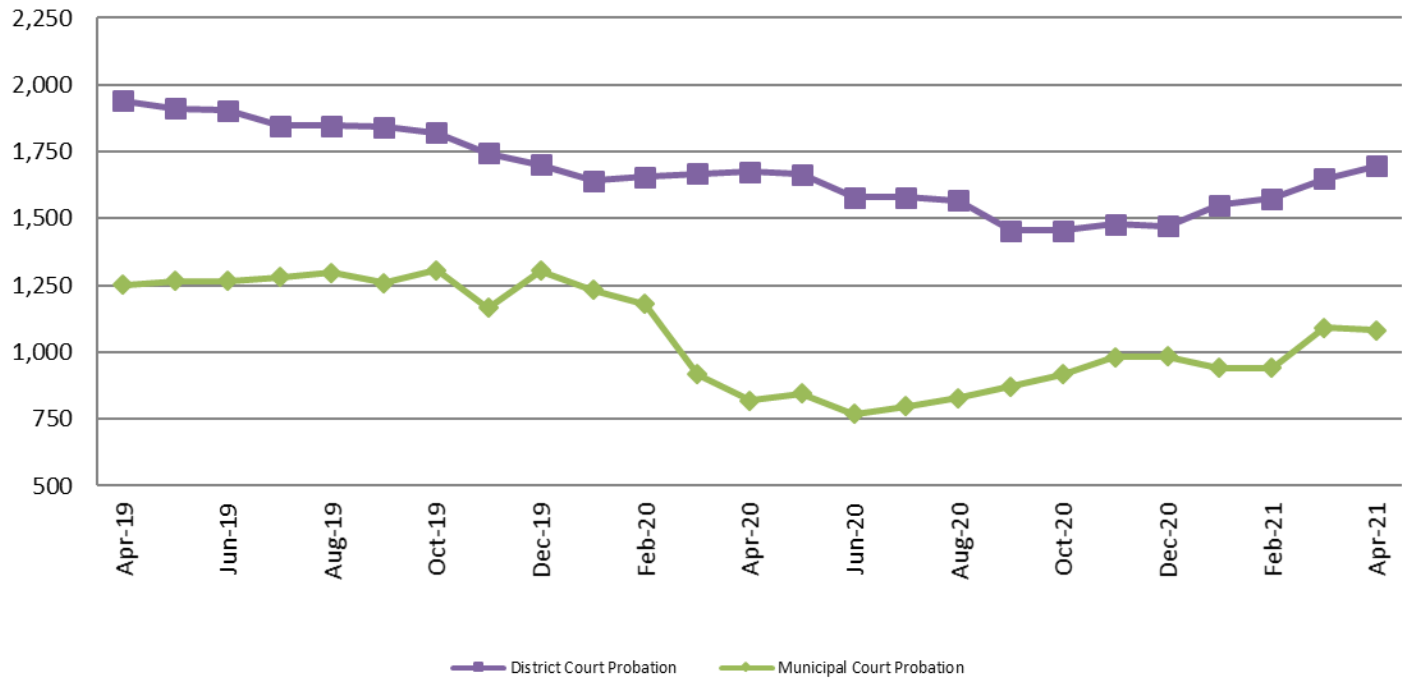
Drug Court - Sedgwick County ADP: April 2019 - present



	April	2019	2020	2021
Sedg. Co. ADP		105	99	Missing
YTD Avg.		101	97	Missing



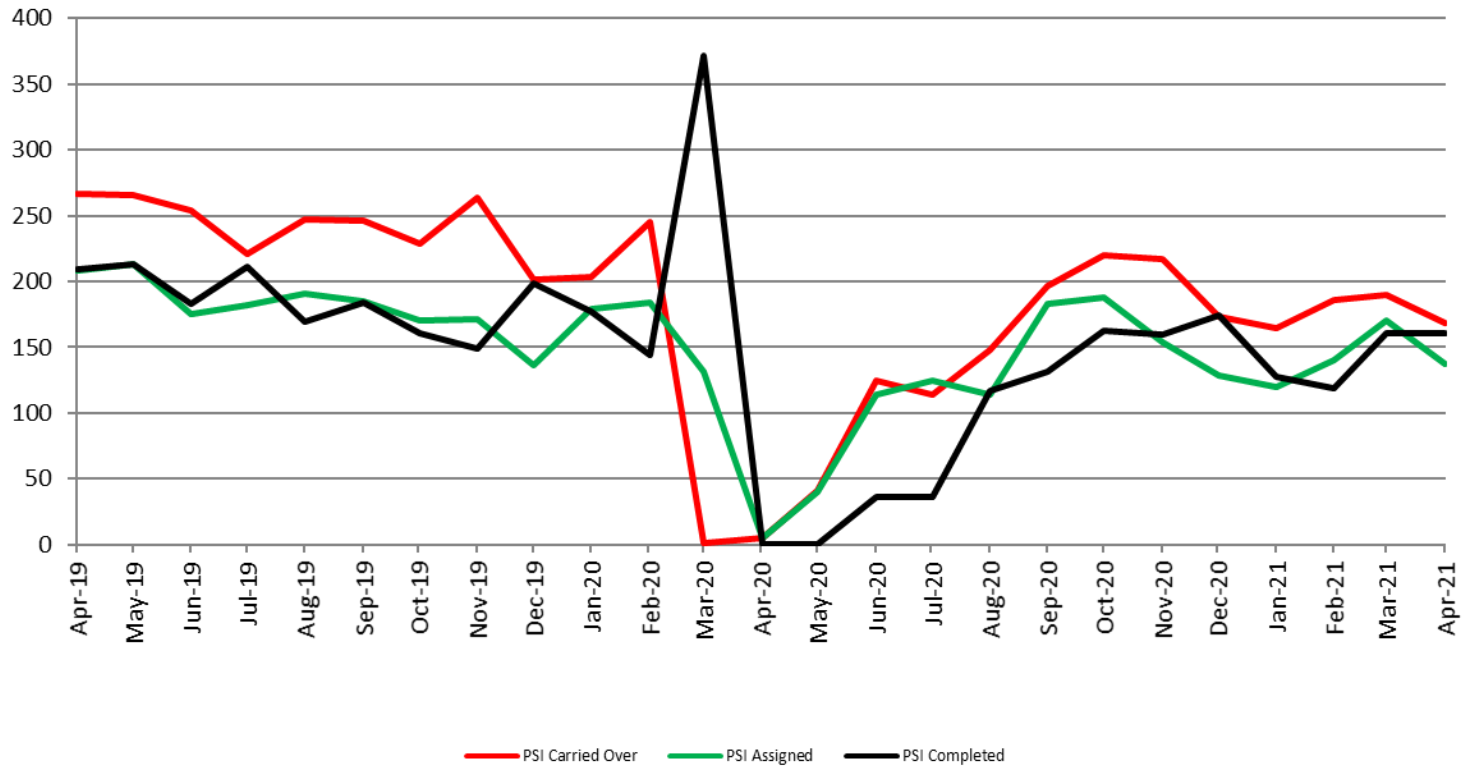
Probation - Active Caseloads April 2019 - present



April	2019	2020	2021	2019 YTD Avg.	2020 YTD Avg.	2021 YTD Avg.
Dist. Court Probation	1,941	1,674	1,697	1,959	1,660	1,618
Muni. Court Probation	1,252	819	1,082	1,228	1,037	1,013



District Court Probation: Pre-Sentence Investigation April 2019 - present

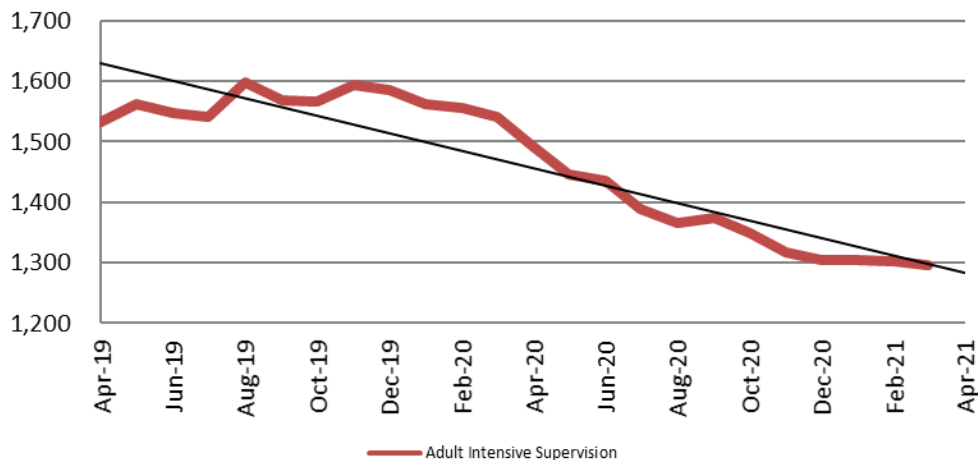


April	2019	2020	2021
Carried Over	267	5	168
Assigned	208	5	137
Completed	209	0	161



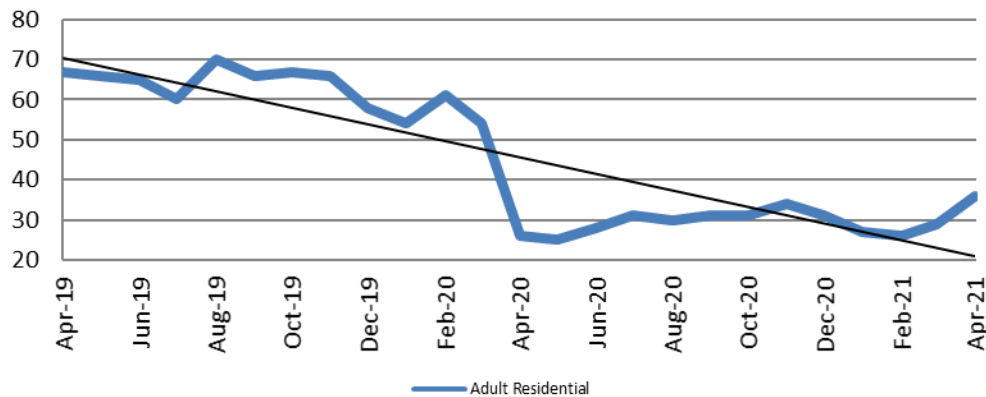
Community Corrections

**Adult Intensive Supervision Probation (AISP):
ADP April 2019 - present**



Year	April	April YTD Avg.
2019	1,533	1,517
2020	1,493	1,539
2021	Missing	Missing

**Adult Residential: ADP
April 2019 - present**

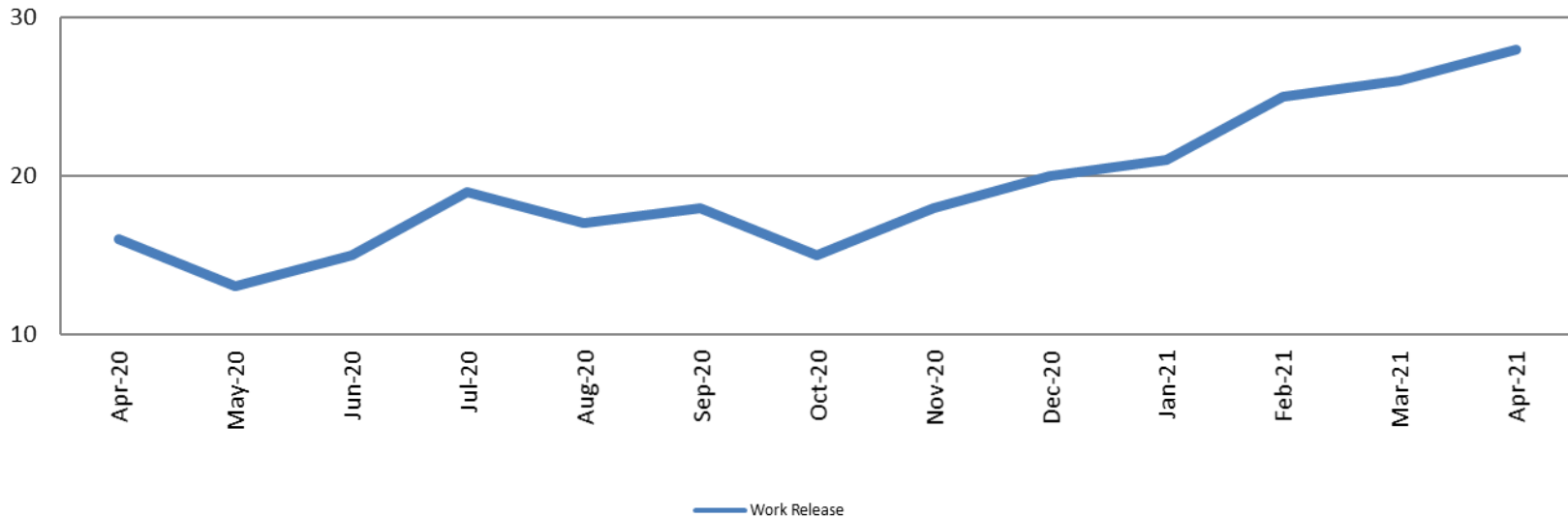


Year	April	April YTD Avg.
2019	67	65
2020	26	49
2021	36	30



Community Corrections

Work Release: ADP April 2020 - present

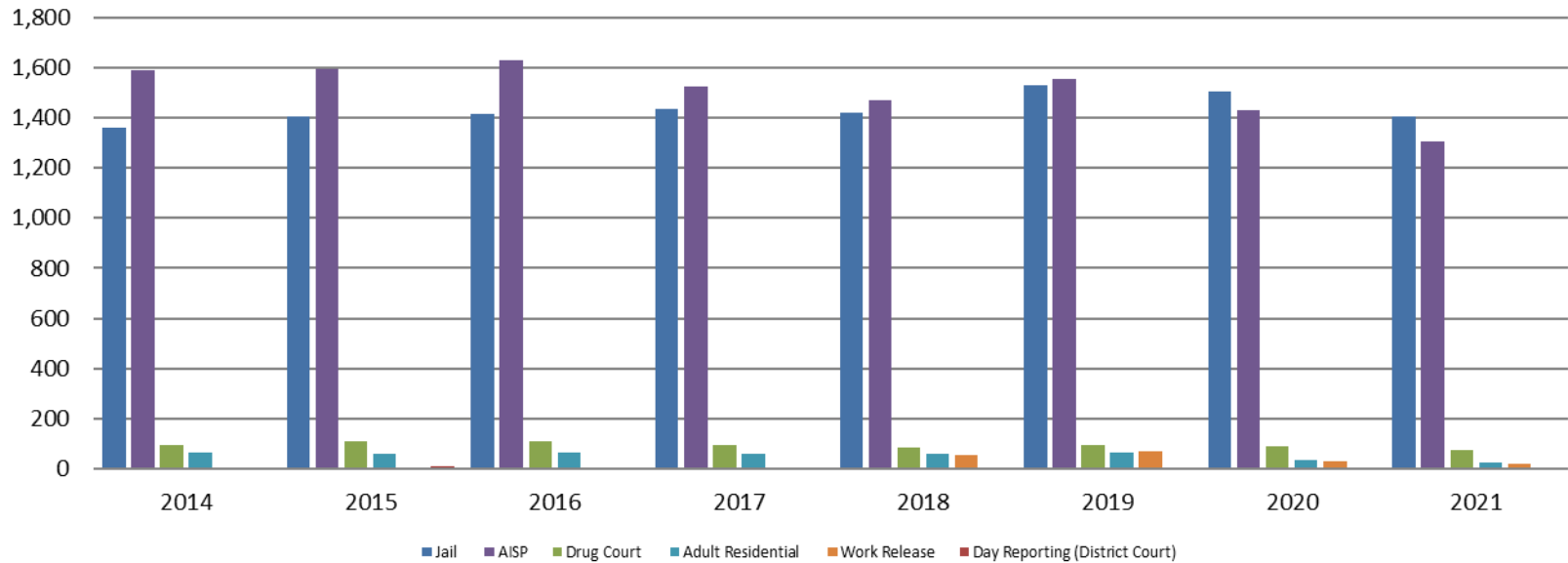


Month Year	Total	YTD Avg.
April 2020	16	57
April 2021	28	25



Correlation: Total & Sedgwick County Programs (Adult)

Total Annual ADP 2014 - present

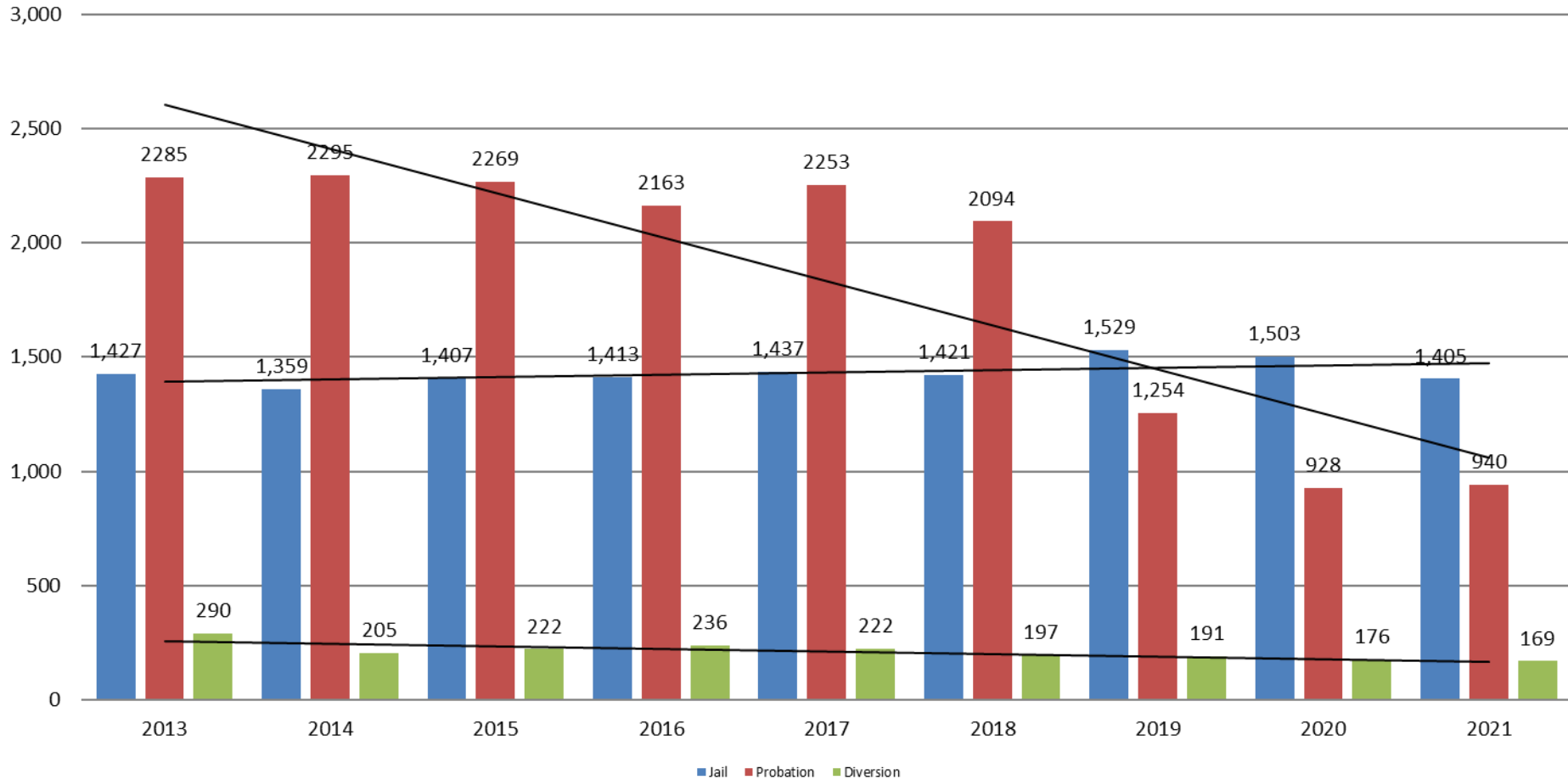


	2019	2020	2021
Jail	1,529	1,503	1,405
AISP	1,553	1,428	1,304
Drug Court	97	88	73
Adult Residential	65	36	27
Work Release	71	30	21
Day Reporting (DC)	0	0	0



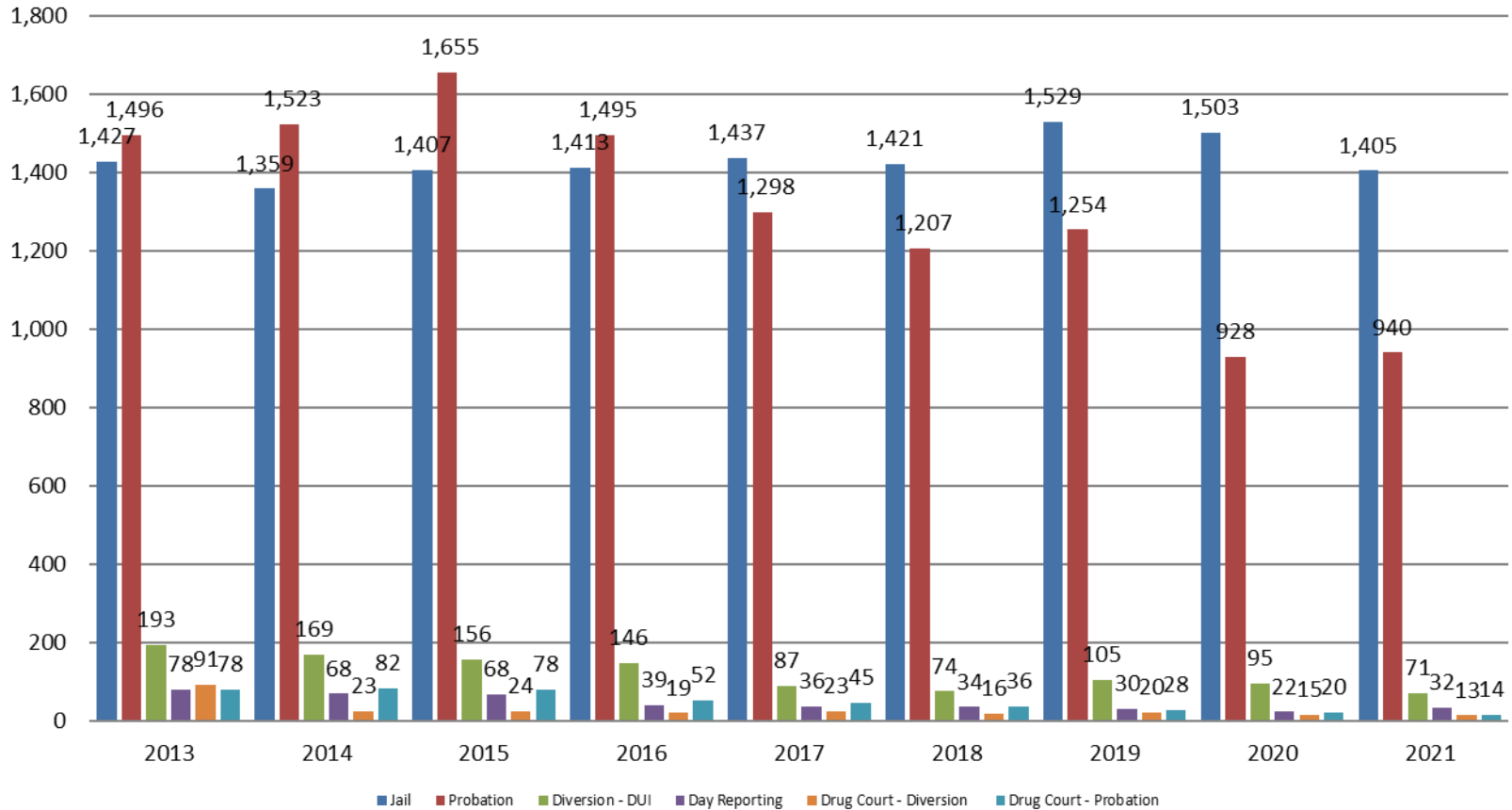
Correlation: Total & District Court Programs

Total Annual ADP: 2013 - present



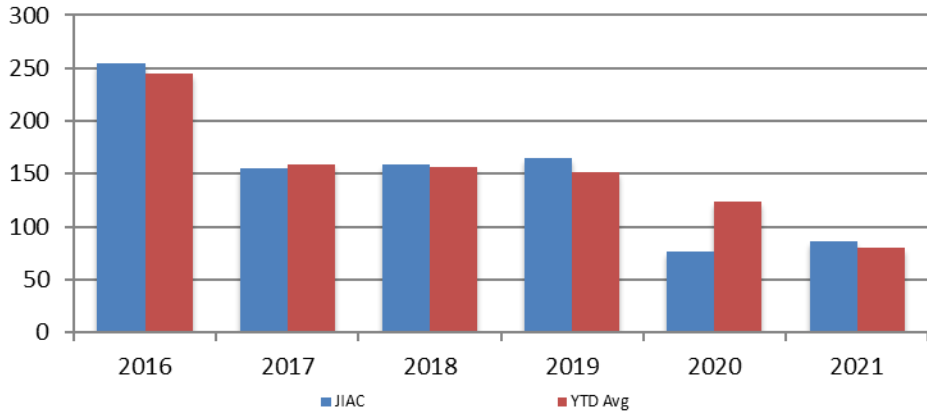
Correlation: Total & City of Wichita / Municipal Court Programs

Total Annual ADP: 2013 - present



Juvenile

**JIAC Intakes
April 2016 - present**

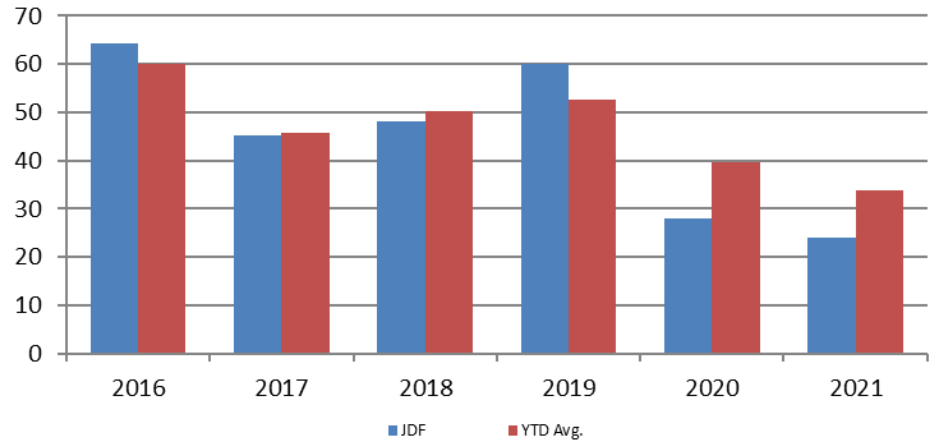


Year	April	April YTD Avg.
2016	254	245
2017	155	159
2018	159	156
2019	165	152
2020	76	124
2021	86	80

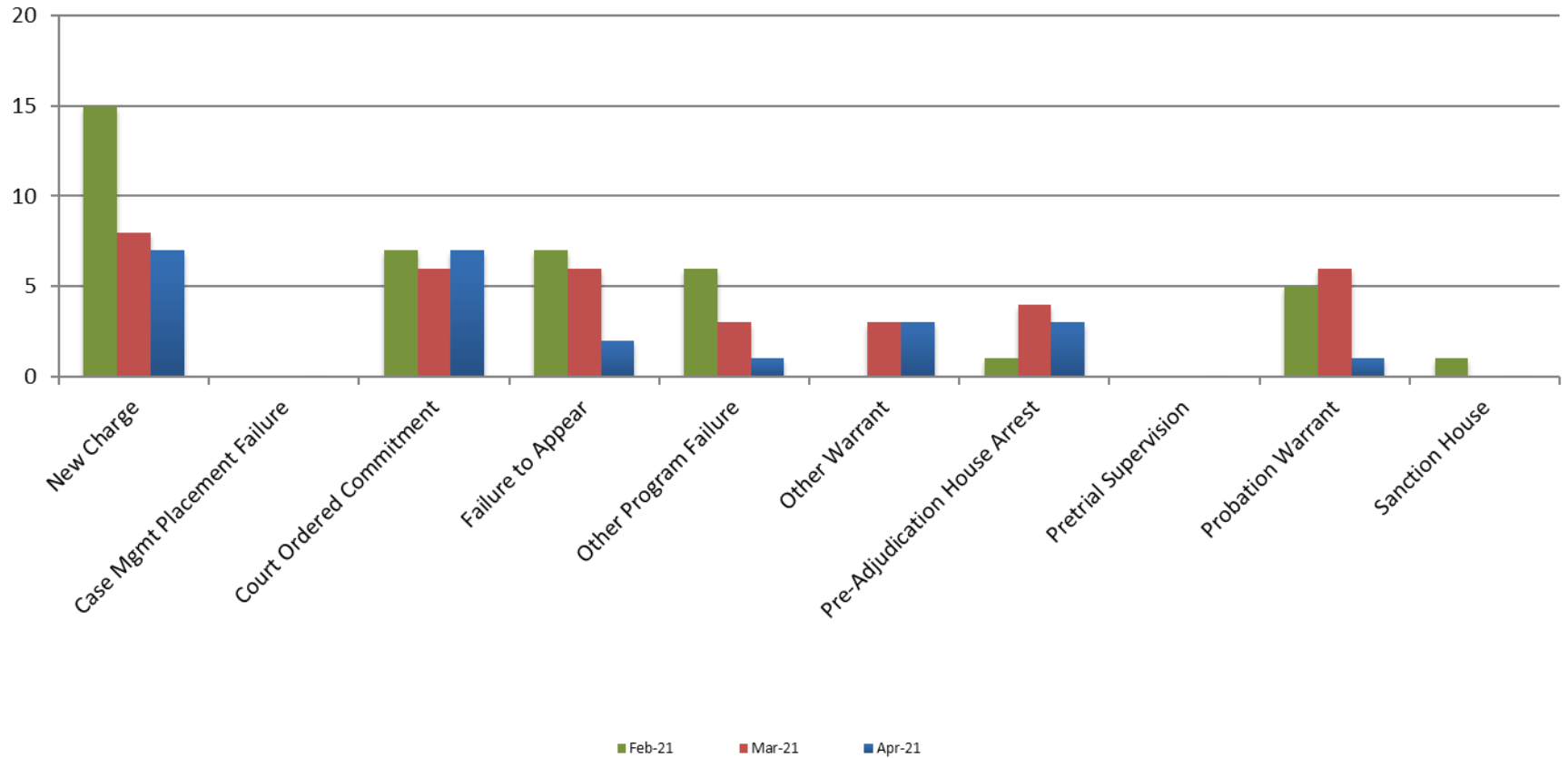
Year April April YTD Avg.

2016	64	60
2017	45	46
2018	48	50
2019	60	53
2020	28	40
2021	24	34

**JDF ADP
April 2016 - present**



Reason for JDF Admits



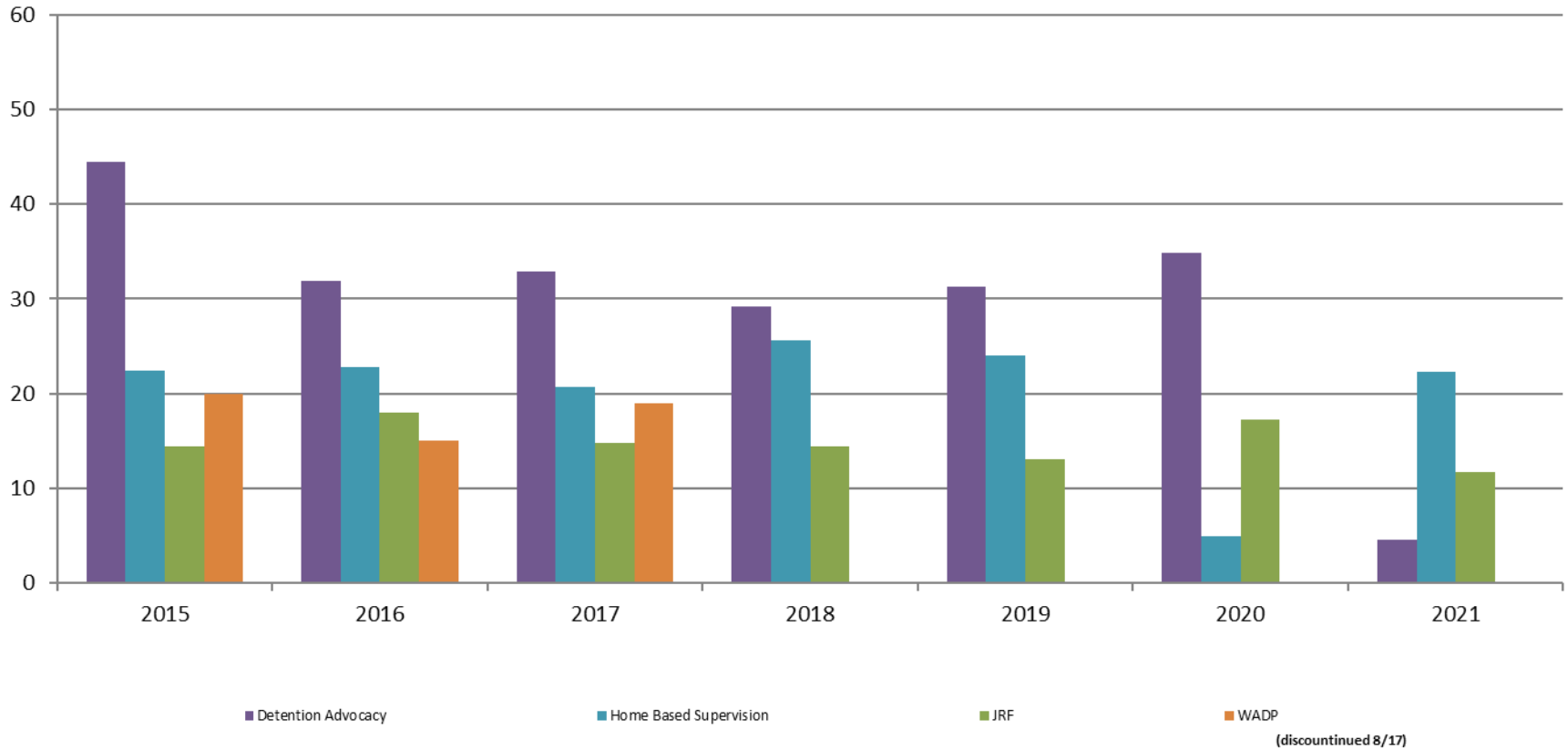
Reason for JDF Admits

Reason	April 2020	April 2021
New Charges	12	7
Case Management Placement Failures	0	0
Court Ordered Commitment	4	7
Failure to Appear	1	2
Other Program Failure	2	1
Other Warrant	2	3
Pre-Adjudication House Arrest	2	3
Pretrial Supervision	2	0
Probation Warrant	3	1
Sanction House	0	0



Juvenile Detention Alternatives

ADP: April 2015 - present



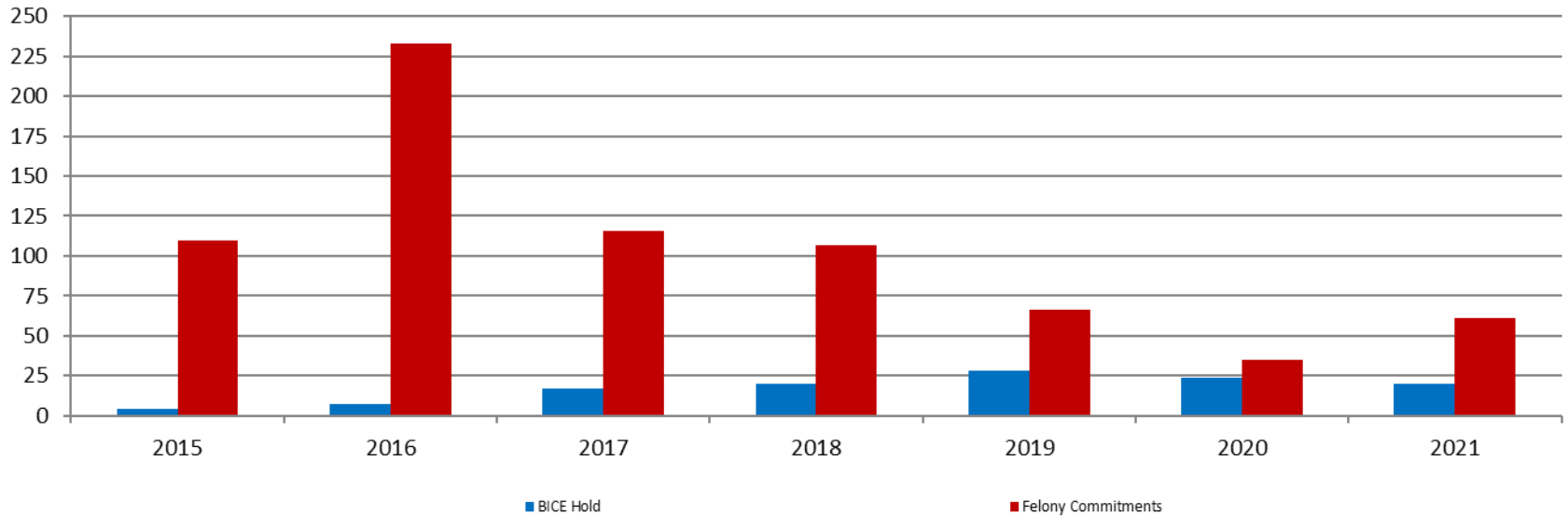
Juvenile Detention Services

April ADP	2018	2019	2020	2021
Juvenile Detention Facility	48	60	28	24
Juvenile Residential Facility	14	13	17	12
Home Based Supervision	26	24	5	22
Detention Advocacy Case Management Services	29	31	35	5
Weekend Alternative Detention Program (total)	0	N/A	N/A	N/A

April YTD AVERAGE	2018	2019	2020	2021
Juvenile Detention Facility	50	53	40	34
Juvenile Residential Facility	13	13	18	9
Home Based Supervision	28	28	21	23
Detention Advocacy Case Management Services	32	29	17	4
Weekend Alternative Detention Program	0	N/A	N/A	N/A

Monthly Jail Snapshot: April 2021

Snapshots April 2015 - present

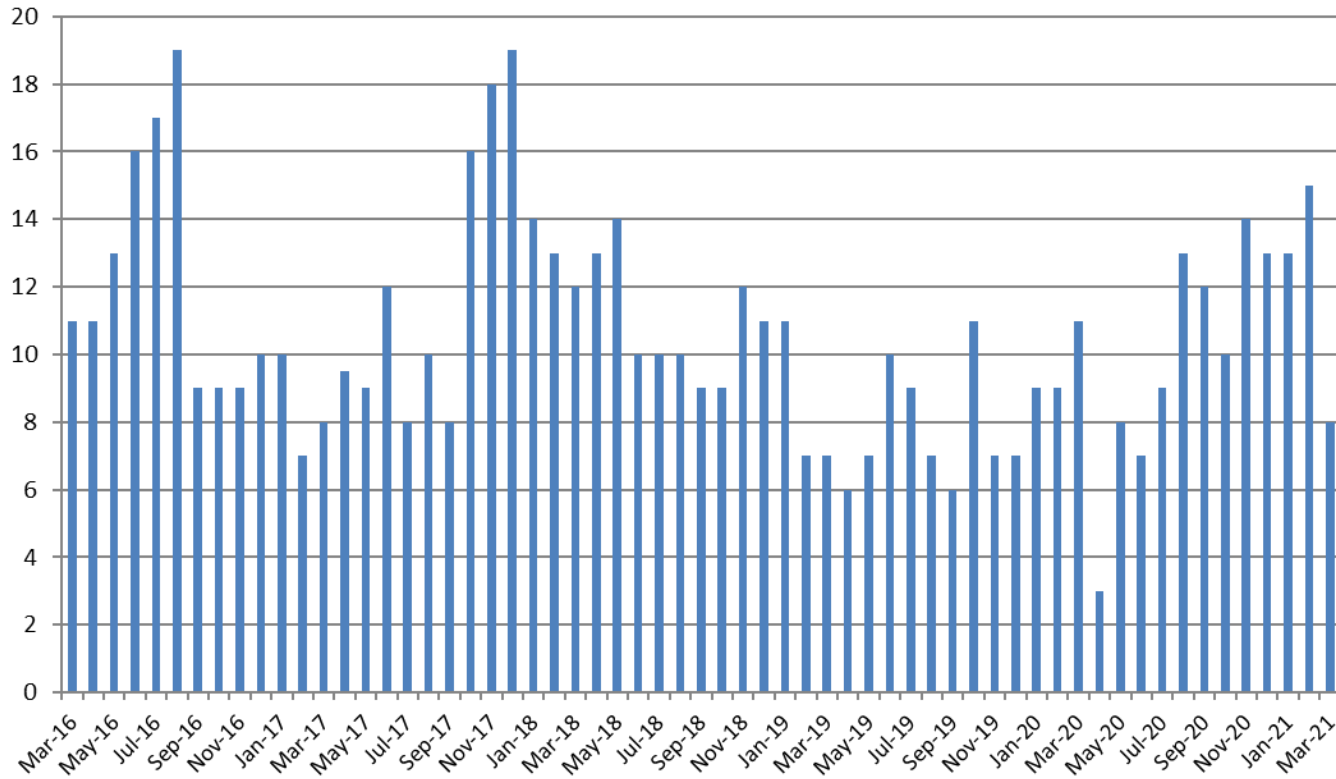


BICE Hold	2015	2016	2017	2018	2019	2020	2021
April	4	7	17	20	28	24	20

Felony Commitments	2015	2016	2017	2018	2019	2020	2021
April	110	233	116	107	66	35	61



Journal Entry Completion (Average Days) March 2016 - present



March	2016	2017	2018	2019	2020	2021
Avg. Days	11	8	12	7	11	8
YTD Avg.	11	8	13	8.3	10	12

