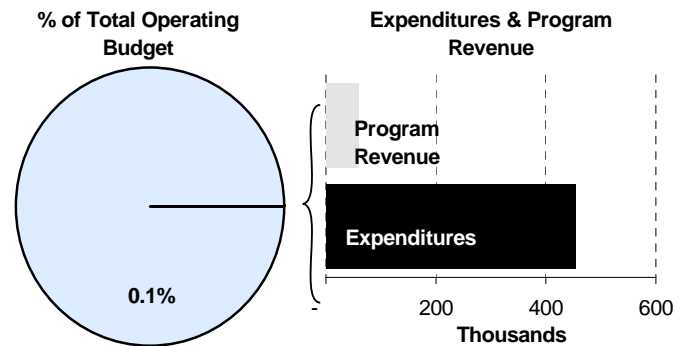
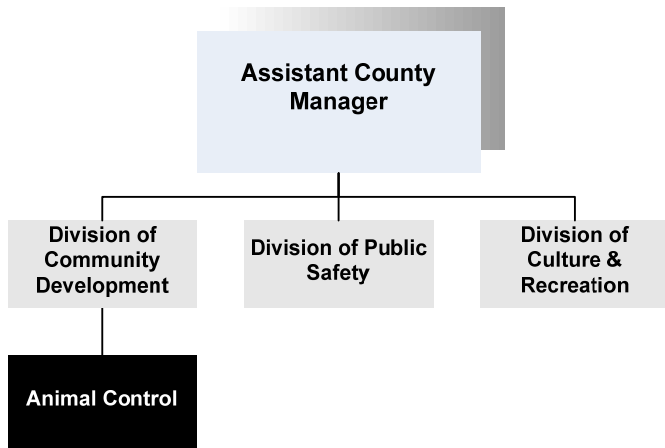




Glen Wiltse
 Director of Code Enforcement
 1015 Stillwell, 1st Floor
 Wichita, Kansas 67213
 316-660-7088
gwiltse@sedgwick.gov

Mission:

- Protecting the health and safety of the community from dangers and nuisances caused by stray and/or threatening animals, and ensuring the proper care and safety of animals.



Program Information

The Animal Control Department is responsible for enforcing all Sedgwick County codes concerning the housing and care of animals. Officers also ensure that animals do not pose a health or safety hazard to County residents and that each animal is appropriately vaccinated and licensed as required by law per County Statute. Other enforcement activities of the department include returning loose dogs to their owners, confining strays at the City of Wichita Animal Shelter, returning loose livestock to fenced pastures, removing dead wildlife from highways, investigating instances of animal cruelty and violations of dangerous animal laws.

The Animal Control Officers work closely with the Sedgwick County Sheriffs Department. Animal Control shares in the Sheriff’s concern for public safety and the wellbeing of the neighborhoods they patrol. Animal Control officers have solid working relationships with veterinarians and shelter providers.

Revenue generated by Animal Control comes from the sale of dog licenses and fees for services performed. These revenues are subsequently deposited in the Code Enforcement Office. The small cities served by Animal Control within Sedgwick County include:

- Kechi
- Bentley
- Andale
- Bel Aire
- Garden Plain
- Cheney
- Haysville
- Viola
- Valley Center
- Colwich

The Wichita Animal Shelter, operated by the City of Wichita and located at 3303 N. Hillside, is Sedgwick County’s only full service public animal shelter, and therefore provides animal sheltering services to all of Sedgwick County.

Once an animal is taken to the Wichita Animal Shelter by Sedgwick County Animal Control, that animal may remain in the shelter up to three days. Because the shelter handles over 12,000 animals each year, if a pet is not claimed within that three-day time frame, staff is forced to euthanize the animal. The shelter provides an up-to-date listing of all the animals brought in on its website so that pet owners can easily determine if their pet has been turned in.

the care of animals in a disaster situation. This will benefit our community to secure loose animals during a disaster event.

Sedgwick County has, as has much of the nation, seen an increase in the number of attacks on humans by various types of dogs. To encourage animal safety for the entire community, Animal Control strongly promotes the following tips:

- Ask the owner’s permission before petting a strange dog.
- Stay away from any dog that may be protecting something.
- Avoid dogs that are eating, playing with a toy, tied up, fenced in, or inside a vehicle.
- Do not pet a sleeping dog or sneak up behind him to play.
- Angry dogs try to make themselves look big by puffing up their ears, fur and tail. Scared dogs shrink to the ground with their tails between their legs and ears drawn back.
- If a dog growls or chases you, be still and quiet with your hands at your sides. If you are playing on the ground, lie down with your knees pulled into your stomach and hands over your ears. Avoid eye contact, which is often

viewed by dogs as a threat.

Departmental Sustainability Initiatives

In May 2006, Animal Control underwent reorganization, changing from a free-standing department to an operation within the Department of Code Enforcement. This organizational movement allows for a more seamless flow of information and places all County Code Enforcement under one director. Sedgwick County Animal Control is still primarily responsible for issuing citations to owners of animals in violation of Sedgwick County standards, which are processed through the County Court.

The Department takes steps to improve the environment of Sedgwick County through the clean up of dead animals, both on public land and in water sources.

The Wichita Animal Shelter offers adoption of stray and surrendered animals. Kansas law requires all animals adopted from animal shelters be spayed or neutered. The fees charged at the animal shelter go toward the spay or neuter of the pet, their rabies vaccination, and any applicable license. The shelter gives all dogs and cats adopted the first in a series of vaccinations for several diseases common to pets.

Department Accomplishments

Sedgwick County Animal Control is a partner in the future development of a county animal response team for

Alignment with County Values

- **Accountability** - Animal Control officers have daily logs that include location, time of arrival and departure, and type of call.
- **Commitment** - Animal Control is committed to the enforcement of adopted codes thru 24/7 operations
- **Honesty** - Open communication, professionalism, and respect – citizen education about their adopted code is a priority. Professionalism is obtained through standardized animal control training.

Goals & Initiatives

- **Respond to citizen request for service in a timely manner**
- **Encourage pet owners to utilize the automated license process**
- **Certifications for Animal Control Officers obtained**

Awards & Accreditations

- Safe Capture International
- American Humane
- Kansas Animal Control Association
- FEMA – Emergency Management Institute
- US Department of Homeland Security

Budget Adjustments

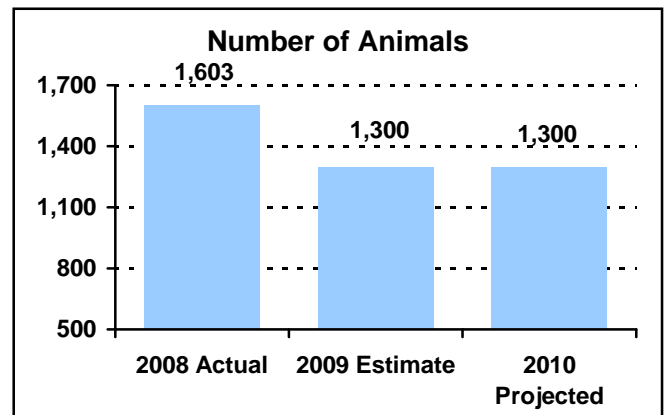
Changes to Animal Control’s 2010 budget reflect an increase in benefits costs and a 2.0 percent general pay adjustment for employees earning less than \$75,000. No increases were provided for contractals, commodities, and capital equipment from the 2009 Adopted budget for property tax supported funds.

PERFORMANCE MEASURE HIGHLIGHTS

The following chart illustrates the Key Performance Indicator (KPI) of Animal Control.

Number of animals secured through intervention -

- Animal Control secures animals that are a nuisance or threat to public safety.



Department Performance Measures	2008 Actual	2009 Est.	2010 Proj.
Goals: Respond to citizen request for service in a timely manner			
Number of animals secured through intervention (KPI)	1,603	1,300	1,300
Number of bite investigations	102	100	100
Law enforcement /emergency calls	741	600	600
Number of animals delivered to the shelter	1,603	1,500	1,500
Number of nuisance animal calls	2,836	2,600	2,600
Animals involved in cruelty investigations	1,916	1,500	1,500
Number of calls dispatched	3,794	5,000	5,000
Number of livestock on roadway	660	500	500
Goals: Encourage pet owners to utilize the automated license process			
Number of County licenses issued	2,686	2,700	2,700
Goals: Certifications for Animal Control Officers			
Percentage of certified officers	100%	100%	100%
Goals: Citizen education			
Number participating in educational presentations	371	400	400

Significant Adjustments From Previous Budget Year

- Adjusted departmental fleet charges

Expenditures	Revenue	FTEs
42,401		

Total	42,401	-	-
--------------	--------	---	---

Budget Summary by Category

Budget Summary by Fund

Expenditures	2008	2009	2009	2010	% Chg.
	Actual	Adopted	Revised		
Personnel	284,081	282,561	282,561	295,924	4.7%
Contractual Services	139,782	100,000	100,000	147,890	47.9%
Debt Service	-	-	-	-	-
Commodities	13,977	48,219	48,219	9,343	-80.6%
Capital Improvements	-	-	-	-	-
Capital Equipment	-	-	-	-	-
Interfund Transfers	-	-	-	-	-
Total Expenditures	437,840	430,780	430,780	453,157	5.2%
Revenue					
Taxes	-	-	-	-	-
Intergovernmental	16,598	7,580	7,580	16,598	119.0%
Charges For Service	1,660	1,047	1,047	1,761	68.2%
Other Revenue	39,555	43,414	43,414	40,350	-7.1%
Total Revenue	57,814	52,041	52,041	58,709	12.8%
Full-Time Equivalents (FTEs)	6.00	6.00	6.00	6.00	0.0%

Expenditures	2009	2010
	Revised	Budget
General Fund-110	430,780	453,157
Total Expenditures	430,780	453,157

Budget Summary by Program

Program	Fund	Expenditures			2010	% Chg.
		2008	2009	2009		
		Actual	Adopted	Revised		
Animal Control	110	437,840	430,780	430,780	453,157	5.2%
Total		437,840	430,780	430,780	453,157	5.2%

Full-Time Equivalents (FTEs)		
2009	2009	2010
Adopted	Revised	Budget
6.00	6.00	6.00
6.00	6.00	6.00



Personnel Summary by Fund

Position Title(s)	Fund	Band	Budgeted Personnel Costs			Full-Time Equivalents (FTEs)			
			2009 Adopted	2009 Revised	2010 Budget	2009 Adopted	2009 Revised	2010 Budget	
Animal Control Supervisor	110	B323	42,164	44,319	44,319	1.00	1.00	1.00	
Senior Animal Control Officer	110	B219	36,861	38,702	38,702	1.00	1.00	1.00	
Animal Control Officer	110	B217	109,739	114,466	114,466	4.00	4.00	4.00	
Subtotal					197,487		6.00	6.00	6.00
Add:									
Budgeted Personnel Savings (Turnover)					-				
Compensation Adjustments					3,950				
Overtime/On Call					14,104				
Benefits					80,383				
Total Personnel Budget					295,924				

