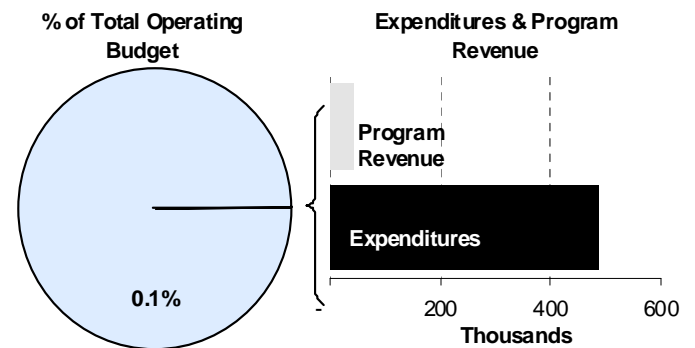
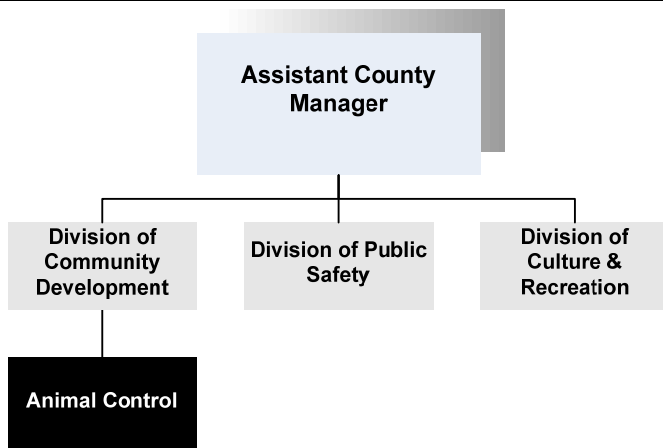




**Irene Hart**  
 Interim Director of Code Enforcement  
 1015 Stillwell, 1<sup>st</sup> Floor  
 Wichita, Kansas 67213  
 316-660-9862  
[ihart@sedgwick.gov](mailto:ihart@sedgwick.gov)

**Mission:**

- Protecting the health and safety of the community from dangers and nuisances caused by stray and/or threatening animals, and ensuring the proper care and safety of animals.



**Program Information**

The Animal Control Department is responsible for enforcing all Sedgwick County codes concerning the housing and care of animals. Officers also ensure that animals do not pose a health or safety hazard to County residents and that each animal is appropriately vaccinated and licensed as required by law per County Statute. Other enforcement activities of the department include returning loose dogs to their owners, confining strays at the City of Wichita Animal Shelter, returning loose livestock to fenced pastures, investigating instances of animal cruelty and violations of dangerous animal laws.

The Animal Control Officers work closely with the Sedgwick County Sheriff’s Office. Animal Control shares in the Sheriff’s concern for public safety and the well being of the neighborhoods they patrol. Animal Control officers also maintain solid working relationships with veterinarians and shelter providers.

Revenue generated by Animal Control comes from the sale of dog licenses and fees for services performed. These revenues are subsequently deposited in the Code Enforcement Office. The small cities served by Animal Control within Sedgwick County include:

- Andale
- Bel Aire
- Bentley
- Cheney
- Colwater
- Garden Plain
- Haysville
- Kechi
- Valley Center
- Viola

The Wichita Animal Shelter, operated by the City of Wichita and located at 3303 N. Hillside, is Sedgwick County’s only full service public animal shelter, and therefore provides animal sheltering services to all of Sedgwick County.

Once an animal is taken to the Wichita Animal Shelter by Sedgwick County Animal Control, that animal may remain in the shelter up to three days. Because the shelter handles over 12,000 animals each year, if an animal is not claimed within that three-day time frame, staff is forced to euthanize the animal. The shelter provides an up-to-date listing of all animals brought onsite on its website so that pet owners can easily search for missing pets.

Animal Control Officers also work closely with the Animal Justice Coalition, the Kansas Animal Control Association, and the Kansas State Animal Response Team. The Animal Control Advisory Board meets on a regular basis to advise the Board of County Commissioners on potential changes to rules and codes regarding animals in Sedgwick County.

**Department Sustainability Initiatives**

In May 2006, Animal Control underwent reorganization, changing from a free-standing department to an operation within the Department of Code Enforcement. This organizational movement allows for a more seamless flow of information and places all County Code Enforcement under one director. Sedgwick County Animal Control is still primarily responsible for issuing citations to owners of animals in violation of Sedgwick County standards, which are processed through the County Court.

The Wichita Animal Shelter offers adoption of stray and surrendered animals. Kansas law requires all animals adopted from animal shelters be spayed or neutered. The fees charged at the animal shelter contribute to spay/neuter of the pet, their rabies vaccination, and any applicable license. The shelter gives all dogs and cats adopted the first in a series of vaccinations for several diseases common to pets.

**Department Accomplishments**

Aside from responding to calls for service and assistance, Animal Control staff is encouraged to attend educational training and development events in an effort to stay current in best practices and offer the best service to the community. In 2010, representatives from Sedgwick County Animal Control attended training events concerning:

- Animal Disaster Response
- Basic Agricultural Emergency Response for Chemical, Biological, Radiological, Nuclear and High Yield Explosives
  - Emergency Planning
  - Developing and Managing Volunteers
- Multiagency Coordination Systems
- Community Emergency Response Team
- Search & Rescue
- Bite Stick & Animal Self Defense
- Emergency Support Function
- Animal Care & Control
- Compassion Fatigue in the Humane Movement
- Basic Animal Decontamination
- Zoonosis, Preparedness, and Public Health

**Alignment with County Values**

- **Accountability** -  
Animal Control officers have daily logs that include location, time of arrival and departure, and type of call
- **Commitment** -  
Animal Control is committed to the enforcement of adopted codes thru 24/7 operations
- **Honesty** -  
Open communication, professionalism, and respect – citizen education about their adopted code is a priority. Professionalism is obtained through standardized animal control training

---

**Goals & Initiatives**

- **Respond to citizen request for service in a timely manner**
- **Encourage pet owners to utilize the automated license process**
- **Obtain and maintain certifications for all Animal Control Officers**

**Budget Adjustments**

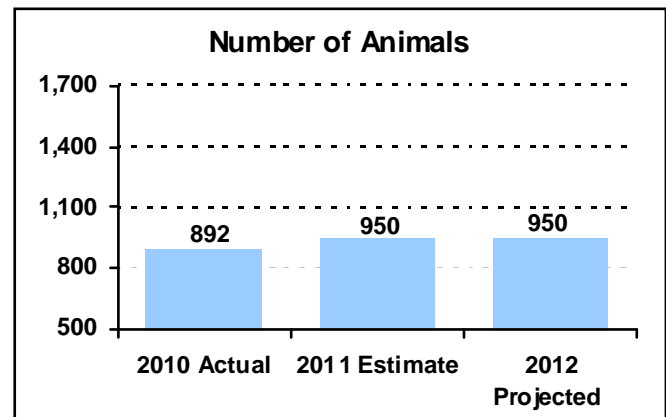
Changes to Animal Control's 2012 budget reflect a 0.4 percent increase in expenditures based on 2011 revised figures for property tax supported funds. Contractual expenditures increased 1.7 percent due to a \$9,470 increase in departmental fleet charges.

**PERFORMANCE MEASURE HIGHLIGHTS**

The following chart illustrates the Key Performance Indicator (KPI) of Animal Control.

**Number of animals secured through intervention -**

- Animal Control secures animals that are a nuisance or threat to public safety.



Department Performance Measures	2010 Actual	2011 Est.	2012 Proj.
<b>Goals: Respond to citizen request for service in a timely manner</b>			
Number of animals secured through intervention (KPI)	892	950	950
Number of bite investigations	30	100	100
Law enforcement /emergency calls	599	600	600
Number of animals delivered to the shelter	783	900	900
Number of nuisance animal calls	2,099	3,000	3,000
Animals involved in cruelty investigations	554	600	600
Number of calls dispatched	2,001	2,500	2,500
<b>Goals: Encourage pet owners to utilize the automated license process</b>			
Number of County licenses issued	1,915	2,000	2,000
<b>Goals: Certifications for Animal Control Officers</b>			
Percentage of certified officers	100%	100%	100%
<b>Goals: Citizen education</b>			
Number participating in educational presentations	371	400	400

**Significant Adjustments From Previous Budget Year**

	Expenditures	Revenue	FTEs
• Reduction in overtime	(10,000)		
• Adjustment in departmental fleet charges	9,470		
• Reduction in contractals, including dead deer pickup	(9,000)		
<b>Total</b>	<b>(9,530)</b>	<b>-</b>	<b>-</b>

**Budget Summary by Category**

**Budget Summary by Fund**

	2011			2012		2011	2012	
	Actual	Adopted	Revised	Budget	% Chg. '11-'12		Revised	Budget
<b>Expenditures</b>								
Personnel	310,728	313,841	319,075	318,433	-0.2%	General Fund-110	484,902	486,712
Contractual Services	132,031	143,827	143,827	146,279	1.7%		-	-
Debt Service	-	-	-	-	-		-	-
Commodities	9,202	22,000	22,000	22,000	0.0%		-	-
Capital Improvements	-	-	-	-	-		-	-
Capital Equipment	-	-	-	-	-		-	-
Interfund Transfers	-	-	-	-	-		-	-
<b>Total Expenditures</b>	<b>451,960</b>	<b>479,668</b>	<b>484,902</b>	<b>486,712</b>	<b>0.4%</b>		<b>Total Expenditures</b>	<b>484,902</b>
<b>Revenue</b>								
Taxes	-	-	-	-	-			
Intergovernmental	7,672	16,764	16,764	7,826	-53.3%			
Charges For Service	2,664	1,098	1,098	2,771	152.4%			
Other Revenue	30,657	32,180	32,180	31,273	-2.8%			
<b>Total Revenue</b>	<b>40,992</b>	<b>50,042</b>	<b>50,042</b>	<b>41,870</b>	<b>-16.3%</b>			
<b>Full-Time Equivalents (FTEs)</b>	<b>6.00</b>	<b>6.00</b>	<b>6.00</b>	<b>6.00</b>	<b>0.0%</b>			

**Budget Summary by Program**

Program	Fund	Expenditures				2012 % Chg. '11-'12	Full-Time Equivalents (FTEs)		
		2010 Actual	2011 Adopted	2011 Revised	2012 Budget		2011 Adopted	2011 Revised	2012 Budget
Animal Control	110	451,960	479,668	484,902	486,712	0.4%	6.00	6.00	6.00
<b>Total</b>		<b>451,960</b>	<b>479,668</b>	<b>484,902</b>	<b>486,712</b>	<b>0.4%</b>	<b>6.00</b>	<b>6.00</b>	<b>6.00</b>



**Personnel Summary by Fund**

Position Title(s)	Fund	Band	Budgeted Personnel Costs			Full-Time Equivalents (FTEs)			
			2011 Adopted	2011 Revised	2012 Budget	2011 Adopted	2011 Revised	2012 Budget	
Animal Control Supervisor	110	B323	46,944	50,010	48,158	1.00	1.00	1.00	
Senior Animal Control Officer	110	B219	40,977	41,764	40,216	1.00	1.00	1.00	
Animal Control Officer	110	B217	119,842	122,194	117,668	4.00	4.00	4.00	
<b>Subtotal</b>					<b>206,042</b>		<b>6.00</b>	<b>6.00</b>	<b>6.00</b>
Add:									
Budgeted Personnel Savings (Turnover)					(2,717)				
Compensation Adjustments					-				
Overtime/On Call/Holiday Pay					14,901				
Benefits					100,207				
<b>Total Personnel Budget*</b>					<b>318,433</b>				

\* The 2011 personnel budget accommodates one additional payroll posting period. The budget is not reflective of an individual employee's annual salary due to the timing variance between the posting of payroll and the employee's receipt of compensation.





2012



Sedgwick County

# Culture & RECREATION



*Sedgwick County...  
working for you*

[www.sedgwickcounty.org](http://www.sedgwickcounty.org)

