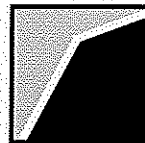
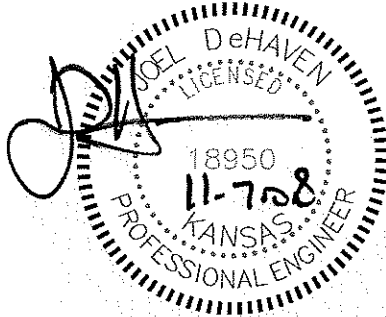
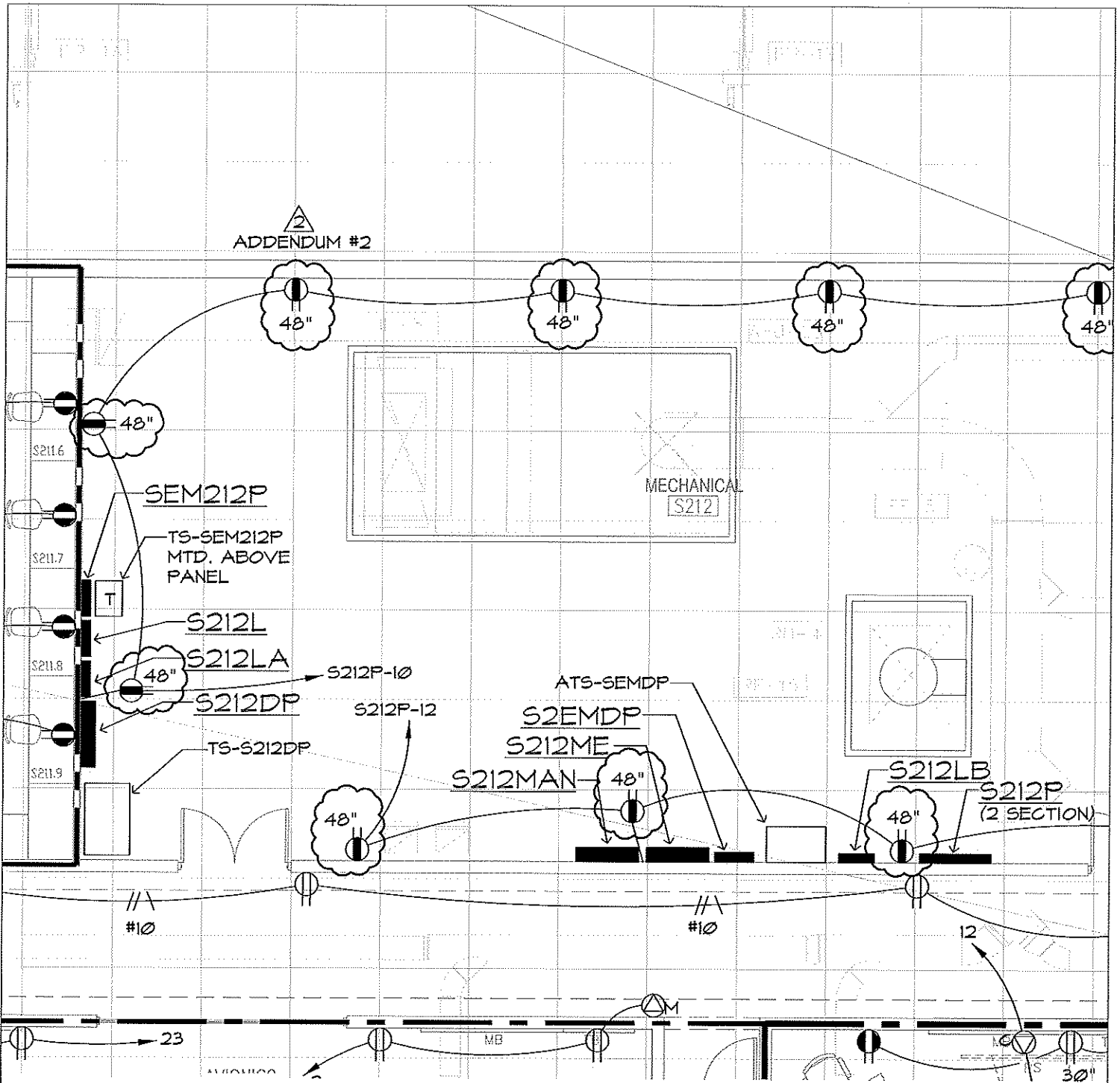


ADDENDUM #2



**TAYLOR RYMAR**  
CORPORATION  
200 NORTH BROADWAY  
SUITE 330  
WICHITA, KS 67202  
PH: 316.771.5011 FAX: 316.771.5012  
WWW.TRC-CORP.COM  
TRC Project No. 108016.05  
Copyright 2008 Taylor RyMar Corporation

SCHAEFER JOHNSON COX FREY ARCHITECTURE

Empire Center  
257 N. Broadway  
Wichita, Kansas  
67202-2317  
Ph. 316.844.0171  
Fax. 316.844.8835  
www.sjcf.com  
architects@sjcf.com

PRJ NO. 2955.00

NATIONAL CENTER  
FOR AVIATION TRAINING  
JABARA CAMPUS

WESS ROAD  
WICHITA, KANSAS

REV. 7 NOV. 08

**E22.16b**



E:\Projects\2008\2955.00\2955.00.dwg, 11/11/08, 11:48:42 AM, J. DeHaven, P.E.