

ADDENDUM NO. 1

Sedgwick County Project: 805-J,K,L (R-254)

The items contained herein now become a part of the referenced plans and specifications. Please read the following items and acknowledge receipt of this addendum on the Proposal Page Number P-1. NOTE: THIS ADDENDUM MUST BE ACKNOWLEDGED TO CONSTITUTE A VALID BID.

SPECIFICATIONS:

<u>Item No.</u>	<u>Description</u>	<u>Old Qty.</u>	<u>New Qty.</u>	<u>Unit</u>
30	Concrete (Grade 4.0)	28.4	85.2	C.Y.
31	Reinforcing Steel (Grade 60)	2,850	8,550	lbs.
32	Foundation Stabilization	12	36	C.Y.

PLANS:

Original Plans:

Sheet No. 68

Sheet No. 86

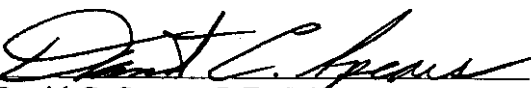
Schedule of Prices SOP-1 to 5

Change in Plans:

Sheet No. 68R (11x17)

Sheet No. 86R (11x17)

Schedule of Prices SOP-1R to 5R

By: 
David C. Spears, P.E., Director,
Public Works/County Engineer

Date: November 27, 2007

SEDGWICK COUNTY PUBLIC WORKS
HIGHWAY DEPARTMENT
SEDGWICK COUNTY, KANSAS
SCHEDULE OF PRICES
Project Number : 805-J, K, L (R-254)

Type of Work: Grading, Subgrade Modification, Concrete Pavement, Bituminous Surfacing, RCB Culverts, Signals, Pavement Marking, Seeding

Item No.	BIDDING ITEM	QUANTITY	UNIT	UNIT PRICE	AMOUNT
1	CLEARING AND GRUBBING	1	L.S.		
2	REMOVAL OF EXISTING STRUCTURES	1	L.S.		
3	COMMON EXCAVATION	17,970	C.Y.		
4	COMMON EXCAVATION (CONTRACTOR FURNISHED)	15,964	C.Y.		
5	ROCK EXCAVATION	8,991	C.Y.		
6	COMPACTION OF EARTHWORK (TYPE B)(MR-90)	10,860	C.Y.		
7	COMPACTION OF EARTHWORK (TYPE AA)(MR-5-5)	16,291	C.Y.		
8	BITUMINOUS BASE CONSTRUCTION (4")(BM-2)	672	TONS		
9	BITUMINOUS BASE CONSTRUCTION (5")(BM-2)	16,469	TONS		
10	BITUMINOUS SURFACE CONSTRUCTION (2")(BM-2)	6,511	TONS		
11	MILLING (2" NOMINAL)	172	S.Y.		
12	CONCRETE PAVEMENT (6" UNIFORM)(AE)	427	S.Y.		
13	CONCRETE PAVEMENT (8" UNIFORM)(NRD)(AE)	4,975	S.Y.		
14	CONCRETE PAVEMENT (8" VG)(REINFORCED)(AE)	76	S.Y.		
15	SURFACING MATERIAL (AB-3)	834	TONS		
16	LIME (HYDRATED)	814	TONS		
17	MANIPULATION OF LIME TREATED SUBGRADE	66,639	S.Y.		
18	WATER FOR LIME TREATED SUBGRADE	1,171	M. Gals.		
19	REINFORCED CRUSHED ROCK BASE (6")	1,000	S.Y.		
20	COMBINED CURB & GUTTER (AE) (TYPE I)	305	L.F.		
21	COMBINED CURB & GUTTER (AE) (SPECIAL) (TYPE I & II)	832	L.F.		

Item No.	BIDDING ITEM	QUANTITY	UNIT	UNIT PRICE	AMOUNT
22	FLUME INLETS (AE)	3	EACH		
23	FLUME INLETS (SPECIAL) (AE)	1	EACH		
24	SLOPE DRAINS (AE)	19	L.F.		
	2- 5' x 3' REINFORCED CONCRETE BOX CULVERT (STA. 42+45.00)				
25	CONCRETE (GRADE 4.0)	48.6	C.Y.		
26	REINFORCING STEEL (GRADE 60)	7,620	LBS.		
27	FOUNDATION STABILIZATION	19	C.Y.		
28	GRANULAR BACKFILL (WINGWALLS) (SET)	1	C.Y.	45.50	
29	CONCRETE FOR SEAL COURSE (SET)	1	C.Y.	115.00	
	3- 4' x 4' REINFORCED CONCRETE BOX CULVERT (STA. 83+32.99)				
30	CONCRETE (GRADE 4.0)	85.2	C.Y.		
31	REINFORCING STEEL (GRADE 60)	8,550	LBS.		
32	FOUNDATION STABILIZATION	36	C.Y.		
33	GRANULAR BACKFILL (WINGWALLS) (SET)	1	C.Y.	45.50	
34	CONCRETE FOR SEAL COURSE (SET)	1	C.Y.	115.00	
	8' x 3' REINFORCED CONCRETE BOX CULVERT (STA. 91+42.00)				
35	CONCRETE (GRADE 4.0)	35.7	C.Y.		
36	REINFORCING STEEL (GRADE 60)	4,200	LBS.		
37	FOUNDATION STABILIZATION	14	C.Y.		
38	GRANULAR BACKFILL (WINGWALLS) (SET)	1	C.Y.	45.50	
39	CONCRETE FOR SEAL COURSE (SET)	1	C.Y.	115.00	
	2- 6' x 3' REINFORCED CONCRETE BOX CULVERT (STA. 167+51.00)				
40	CONCRETE (GRADE 4.0)	88.1	C.Y.		
41	REINFORCING STEEL (GRADE 60)	16,090	LBS.		
42	FOUNDATION STABILIZATION	34	C.Y.		
43	GRANULAR BACKFILL (WINGWALLS) (SET)	1	C.Y.	45.50	
44	CONCRETE FOR SEAL COURSE (SET)	1	C.Y.	115.00	

Item No.	BIDDING ITEM	QUANTITY	UNIT	UNIT PRICE	AMOUNT
	3- 5' x 4' REINFORCED CONCRETE BOX CULVERT (STA. 53+46.53)				
45	CONCRETE (GRADE 4.0)	110.2	C.Y.		
46	REINFORCING STEEL (GRADE 60)	16,940	LBS.		
47	FOUNDATION STABILIZATION	38	C.Y.		
48	GRANULAR BACKFILL (WINGWALLS) (SET)	1	C.Y.	45.50	
49	CONCRETE FOR SEAL COURSE (SET)	1	C.Y.	115.00	
50	DROP INLET	3	EACH		
51	STANDARD MANHOLE (TYPE "II")	3	EACH		
52	REINFORCED CONCRETE MANHOLE	1	EACH		
53	3.0 FT ² STORM SEWER PIPE (RCPHE)	686	L.F.		
54	5.0 FT ² STORM SEWER PIPE (RCPHE)	146	L.F.		
55	24" STORM SEWER PIPE (RCP)	17	L.F.		
56	18" CROSSROAD PIPE (RCP)	147	L.F.		
57	1.5 FT ² CROSSROAD PIPE (RCPHE)	86	L.F.		
58	3.0 FT ² CROSSROAD PIPE (RCPHE)	42	L.F.		
59	5.0 FT ² CROSSROAD PIPE (RCPHE)	272	L.F.		
60	7.0 FT ² CROSSROAD PIPE (RCPHE)	88	L.F.		
61	18" ENTRANCE PIPE (RCP)	314	L.F.		
62	1.5 FT ² ENTRANCE PIPE (RCPHE)	459	L.F.		
63	18" ENTRANCE PIPE (CMP)	175	L.F.		
64	24" ENTRANCE PIPE (RCP)	35	L.F.		
65	36" ENTRANCE PIPE (CMP)	31	L.F.		
66	3.0 FT ² ENTRANCE PIPE (RCPHE)	228	L.F.		
67	5.0 FT ² ENTRANCE PIPE (RCPHE)	564	L.F.		
68	7.0 FT ² ENTRANCE PIPE (RCPHE)	170	L.F.		
69	10.0 FT ² ENTRANCE PIPE (RCPHE)	101	L.F.		
70	18" END SECTION (RC)	21	EACH		
71	1.5 FT ² END SECTION (RCHE)	24	EACH		
72	18" END SECTION (CM)	8	EACH		
73	24" END SECTION (RC)	3	EACH		

Item No.	BIDDING ITEM	QUANTITY	UNIT	UNIT PRICE	AMOUNT
74	36" END SECTION (CM)	2	EACH		
75	3.0 FT ² END SECTION (RCHE)	16	EACH		
76	3.0 FT ² END SECTION (CM)	4	EACH		
77	5.0 FT ² END SECTION (RCHE)	38	EACH		
78	7.0 FT ² END SECTION (RCHE)	12	EACH		
79	10.0 FT ² END SECTION (RCHE)	6	EACH		
80	MAILBOX INSTALLATION	9	EACH		
81	EROSION CONTROL MAT (CLASS I, TYPE A)	1,557	S.Y.		
82	TRAFFIC SIGNAL INSTALLATION	1	L.S.		
83	VIDEO DETECTION SYSTEM	1	L.S.		
84	UNINTERRUPTIBLE POWER SUPPLY	1	L.S.		
85	PAVEMENT MARKING (THERMOPLASTIC)(WHITE)(4")	32,662	L.F.		
86	PAVEMENT MARKING (THERMOPLASTIC)(WHITE)(6")	870	L.F.		
87	PAVEMENT MARKING (THERMOPLASTIC)(YELLOW)(4")	16,134	L.F.		
88	PAVEMENT MARKING (THERMOPLASTIC)(YELLOW)(12")	277	L.F.		
89	PAVEMENT MARKING SYMBOL (THERMOPLASTIC)(WHITE)(LEFT ARROW)	7	EACH		
90	PAVEMENT MARKING SYMBOL (THERMOPLASTIC)(WHITE)(RIGHT ARROW)	8	EACH		
91	PAVEMENT MARKING (METHYL METHACRYLATE)(WHITE)(4")	559	L.F.		
92	PAVEMENT MARKING (METHYL METHACRYLATE)(WHITE)(6")	333	L.F.		
93	PAVEMENT MARKING (METHYL METHACRYLATE)(WHITE)(24")	157	L.F.		
94	PAVEMENT MARKING (METHYL METHACRYLATE)(YELLOW)(4")	333	L.F.		
95	PAVEMENT MARKING SYMBOL (METHYL METHACRYLATE)(WHITE)(LEFT ARROW)	4	EACH		
96	PAVEMENT MARKING SYMBOL (METHYL METHACRYLATE)(WHITE)(RIGHT ARROW)	4	EACH		
97	FIELD OFFICE AND LABORATORY (TYPE A)	2	EACH		
98	MOBILIZATION	1	L.S.		
99	CONTRACTOR CONSTRUCTION STAKING	1	L.S.		

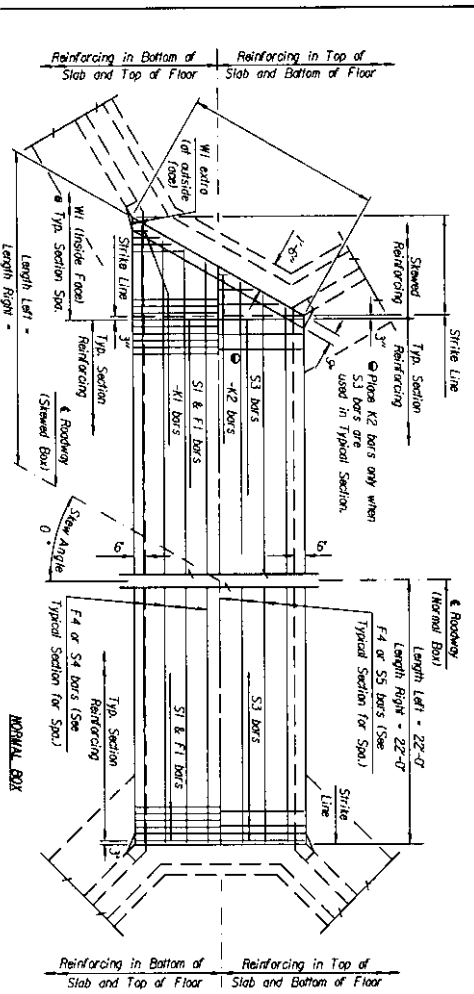
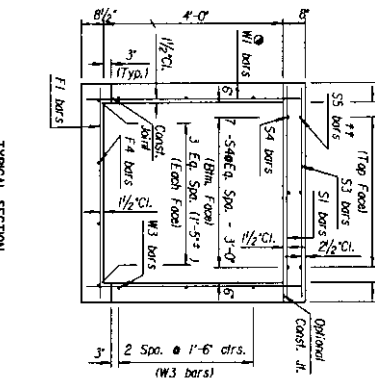
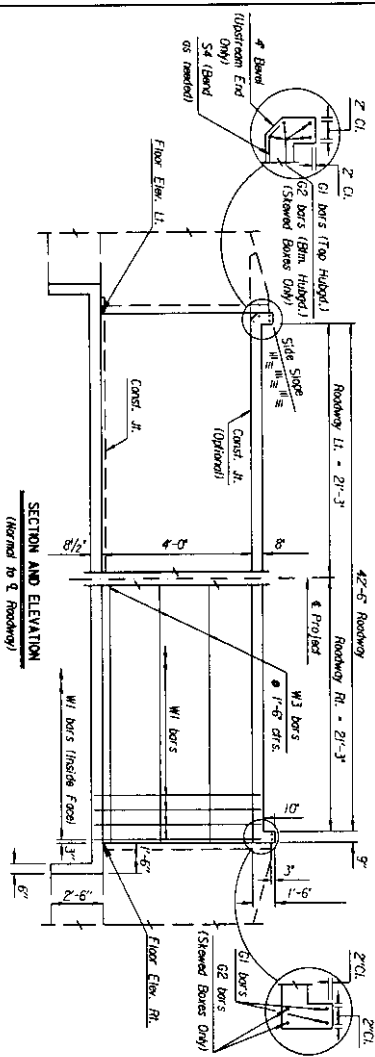
Item No.	BIDDING ITEM	QUANTITY	UNIT	UNIT PRICE	AMOUNT
100	CONSTRUCTION TRAFFIC CONTROL	1	L.S.		
101	TEMPORARY WATER POLLUTION CONTROL	1	L.S.		
102	PERMANENT SEEDING, FERTILIZE AND MULCH	1	L.S.		
103	FOUNDATION STABILIZATION (SET)	1	C.Y.	50.00	
104	TEMPORARY SEEDING, FERTILIZE AND MULCH	1	L.S.		
105	MOWING	3.1	P.M.P.S.		
(The bidder shall extend all items and total the bid.)					Total Bid \$
(In words)					

Company or Firm Name

By

Title

DATE	PROJECT NO.	YEAR	SHEET NO.	TOTAL SHEETS
1/25/84	R-254	2007	68R	188



SECTION AND ELEVATION
(Normal to Roadway)

TYPICAL SECTION

FLOOR DESIGN PURPOSES ONLY - DO NOT USE FOR CONSTRUCTION				CURB/ELEV SUMMARY			
Floor	Down	Design	Slab	Left Wings	Right Wings	Spout	Soil
Elev. Lt.	Elev. Rt.	Gr. Elev.	Flt. Ht.	FLARED	FLARED	Acron	Slope
1359.291	1359.271	1353.23	1.30	0	FLARED	YES	MO

BAR SCHEDULE			
FL	F4	Δ S1	Δ S3
Size Sp. No.	Size Sp. No.	Size Sp. No.	Size Sp. No.
Length	Length	Length	Length
W/A/W/A/W/A	W/A/W/A/W/A	W/A/W/A/W/A	W/A/W/A/W/A

MINIMUM SPlice LENGTHS	
#4	1'-0"
#6	2'-0"

SUMMARY OF QUANTITIES	
Concrete (Grade 4.0)	Δ 85.2 C1
Concrete (Grade 4.0) (KAYE)	Δ 0.0 C1
Reinforcing Steel (Gr. 60)	Δ 8,550 LBS.
Reinforcing Steel (Epoxy Coated)	Δ 0.0 LBS.
Class III Expansion	Δ 16 C1
Foundation Stabilization	Δ 1 C1
Concrete for Seal Course (SBR)	Δ 1 C1
Granular Bedfill (Impervious) (SBR)	Δ 1 C1

Updated Quantities	
BR 1.4.1 P	Sandwich Co
CLVERT NO. 805-K-2000	Stc. 83-32-99
SINGLE 4 FT x 4 FT RCB	

GENERAL NOTES

LOADING: HS20-44 ASD/STO Specifications, 1983 Edition.

UNIT STRENGTHS: Grade 4.0 Concrete, $f_c = 4,000$ P.S.I.; Reinforcing Steel, $f_y = 60,000$ P.S.I.

PILE HEIGHT: Unless otherwise noted, the Design Fill Height is measured from the riding surface of the curb and shall include the surfacing.

CONCRETE: Grade 4.0 Concrete shall be used throughout. Bewel of exposed edges with a finish irregular mounding, where shown. All concrete shall conform to ASTM A615.

REINFORCING: All reinforcement shall conform to ASTM A615, Grade 60. All dimensions relative to reinforcing steel shall be to centerline of bar unless otherwise noted.

EXCAVATION: Excavation for curbs less than bridge length shall not be paid for directly but shall be substituted to Grade 4.0 Concrete. Excavation for RCB Bridges shall be paid for as Class II Excavation.

SEAL COURSE: A Seal Course may be required by the Engineer. It shall be a minimum depth of 3 inches or as determined by the Engineer. Concrete for seal course shall be paid for at the unit price set for Concrete for Seal Course.

FOUNDATION STABILIZATION: The Foundation Stabilization quantity has been outlined in the limits shown on the RCB Auxiliary Details sheet. The design may be increased by the Engineer. The Contractor may use any Foundation Stabilization for the BERM. The Foundation Stabilization shall be applied to the BERM. The Foundation Stabilization shall be applied to the BERM. The Foundation Stabilization shall be applied to the BERM.

QUANTITIES: The quantities shown in the Curb/Elev Summary include item and/or soil save quantities when their construction is required by the plans. Payment for additional quantities that result from including seal course and/or floating apron, as a change in original plans, shall be made of the Unit Price bid for the various items involved.

GRANULAR BEDFILL (IMPERVIOUS): Special bedfill procedures may be required at the discretion of the Engineer. See Auxiliary Details. Special bedfill procedures may be required at the discretion of the Engineer. See Auxiliary Details. Special bedfill procedures may be required at the discretion of the Engineer. See Auxiliary Details.

STRIKE LINE: Strike lines and that portion of the RCB outside the strike line shall be constructed with Forming for wings shall be constructed with the correct floor. See wingwall detail sheet.

Reinforcing in Bottom of Slab and Top of Floor

Reinforcing in Top of Slab and Bottom of Floor

Reinforcing in Bottom of Slab and Top of Floor

Reinforcing in Top of Slab and Bottom of Floor

PLAN

SECTION AND ELEVATION (Normal to Roadway)

TYPICAL SECTION

MINIMUM SPlice LENGTHS

SUMMARY OF QUANTITIES

Updated Quantities