



Sedgwick County



EMS

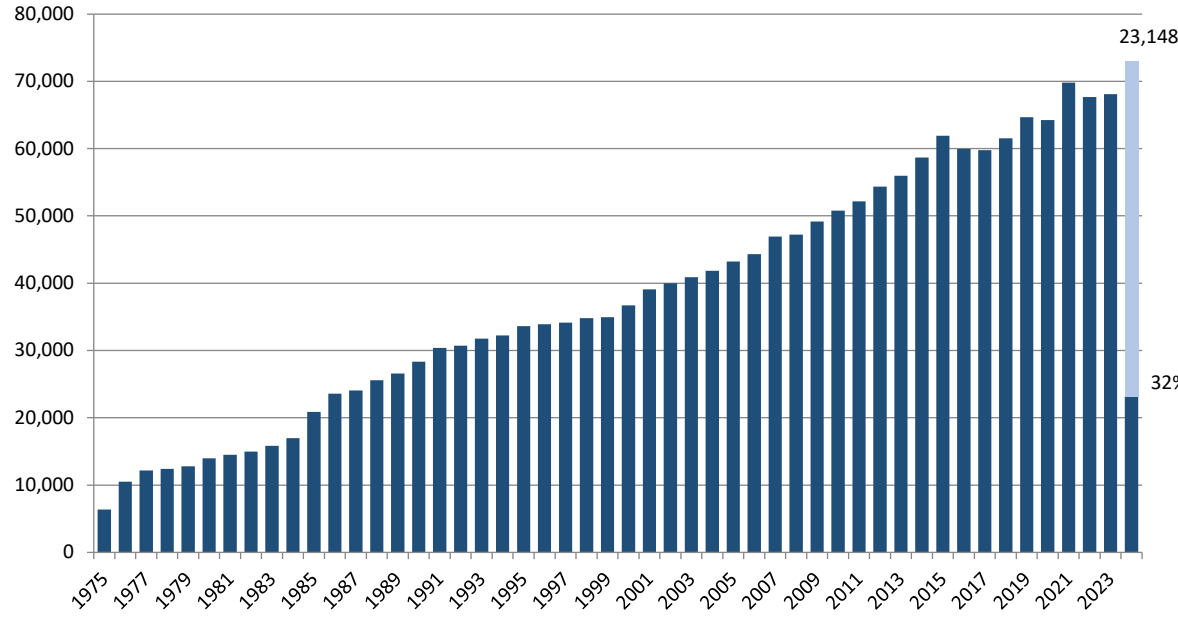


# Monthly Operations Report April 2024

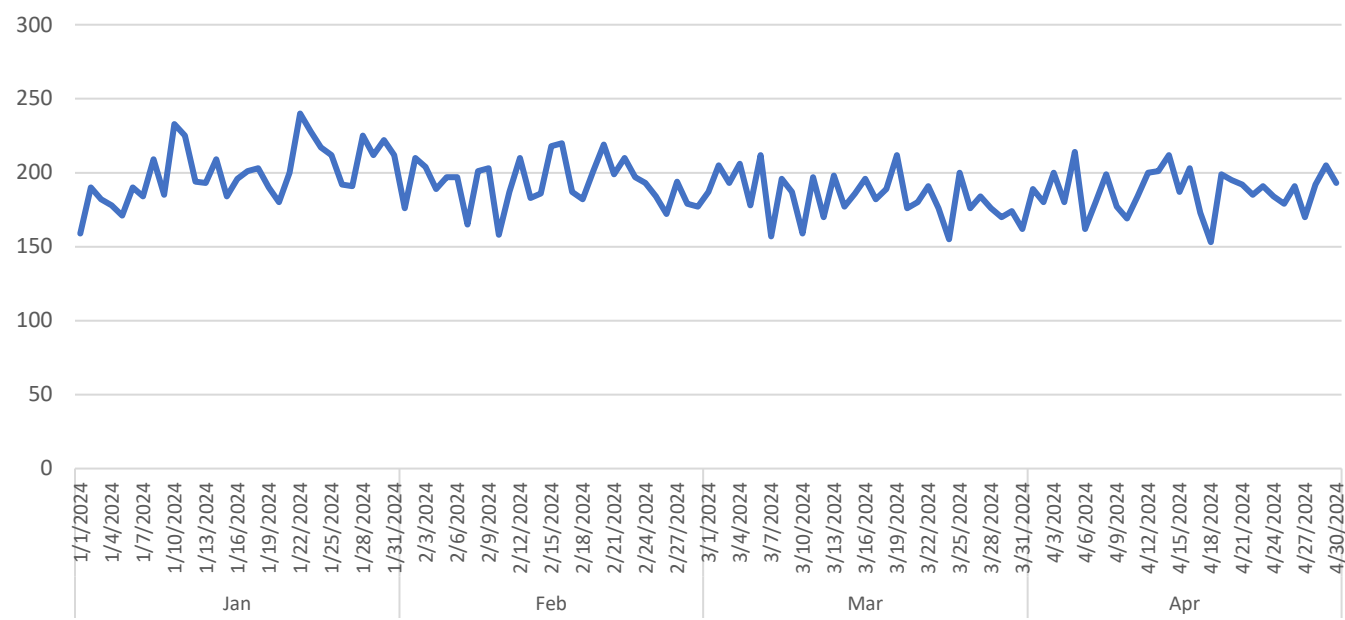
Prepared by Victor Okwo  
EMS Systems & Chief Data Officer  
May 11, 2024

# Call Volume & Response Time

### Annual Call Volume



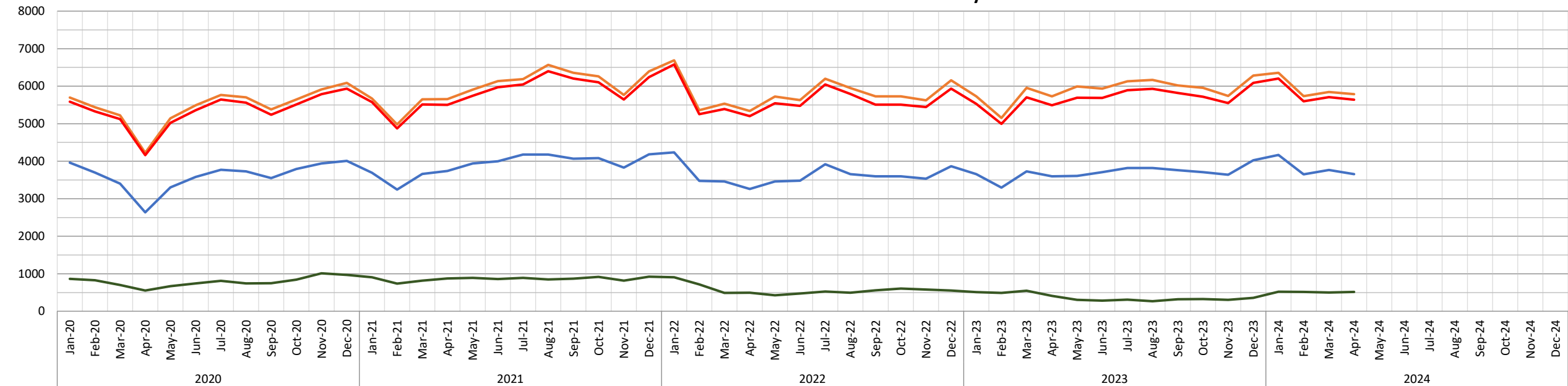
### Calls by Day



— Total Patients   
 — Total Transports   
 — Total P8 Calls   
 — Total Calls

### Call & Patient Trends by Month

*\*P8 = Non-emergency interfacility transfer*

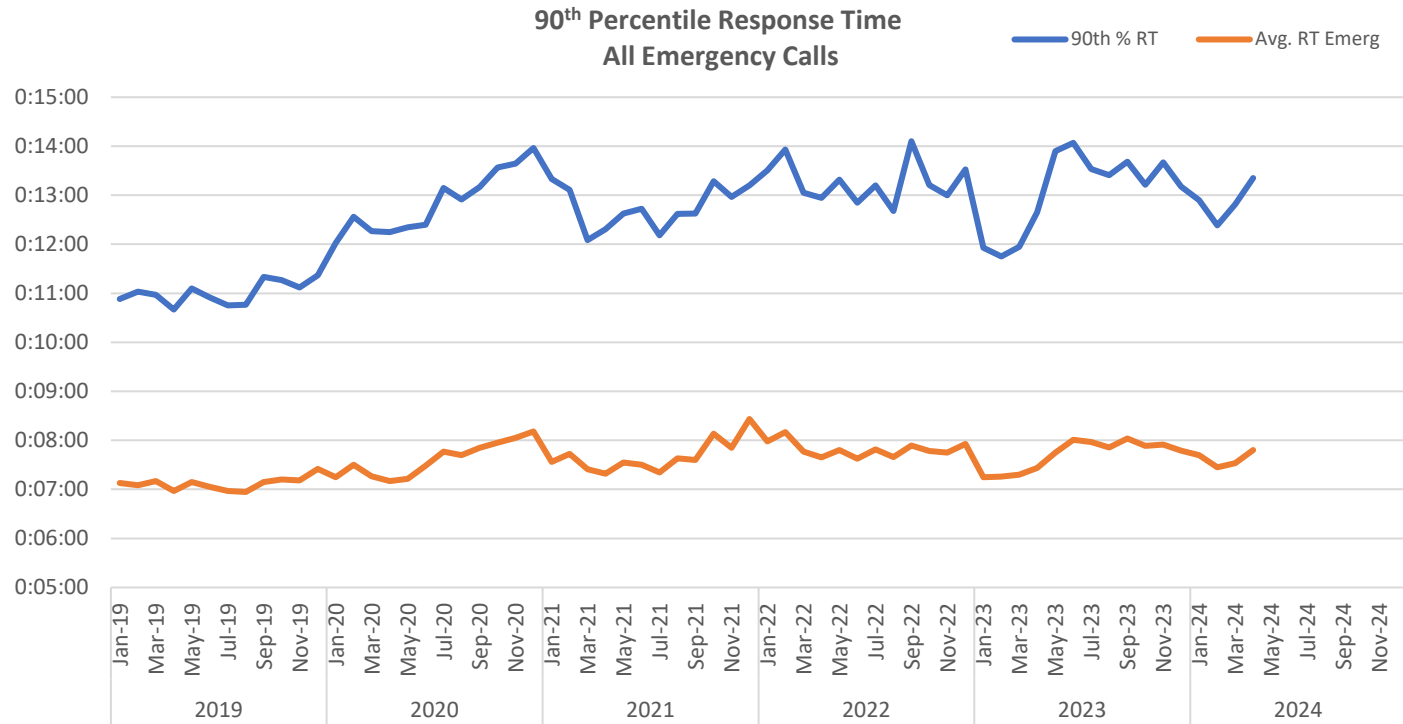


All Calls			Valid Calls			Transports				Non-Emergency		
Row Labels	Count of Call #	Avg/Day	Row Labels	Count of Call #		Row Labels	Count of Call #	Txport %	Txport Valid %	Row Labels	Count of Call #	Avg/Day
Jan	6204	200	Jan	5416	87.3%	Jan	4165	67.1%	76.9%	Jan	522	17
Feb	5598	193	Feb	4954	88.5%	Feb	3650	65.2%	73.7%	Feb	516	18
Mar	5707	184	Mar	5048	88.5%	Mar	3768	66.0%	74.6%	Mar	501	16
Apr	5639	188	Apr	4976	88.2%	Apr	3653	64.8%	73.4%	Apr	515	17
May			May			May				May		
Jun			Jun			Jun				Jun		
Jul			Jul			Jul				Jul		
Aug			Aug			Aug				Aug		
Sept			Sept			Sept				Sept		
Oct			Oct			Oct				Oct		
Nov			Nov			Nov				Nov		
<b>Grand Total</b>	<b>23146</b>	<b>191</b>	<b>Grand Total</b>	<b>20393</b>	<b>88.1%</b>	<b>Grand Total</b>	<b>15236</b>	<b>65.8%</b>	<b>74.7%</b>	<b>Grand Total</b>	<b>1539</b>	<b>17</b>

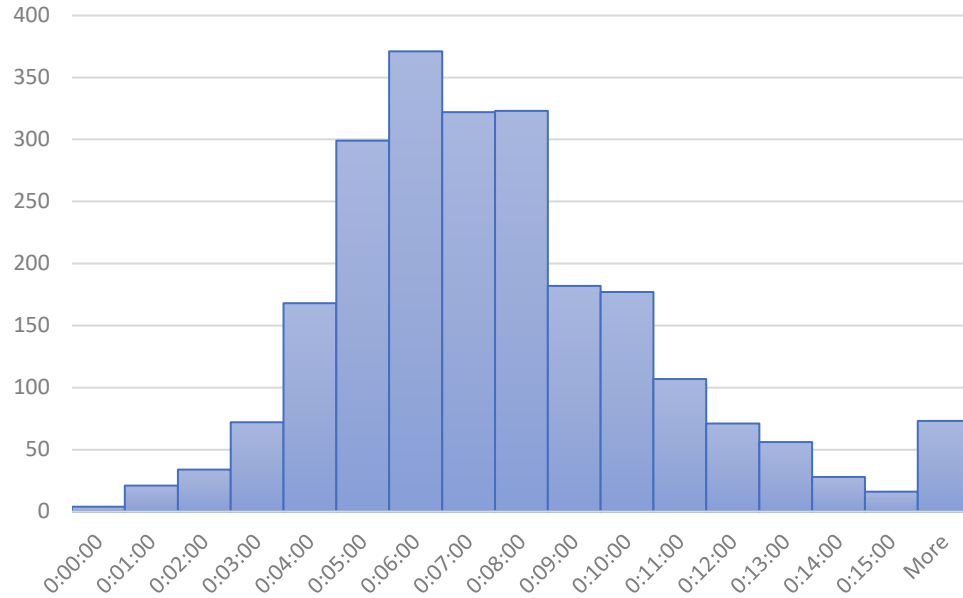
CRV		
Row Labels	Count of Call #	Avg/Day
Jan	18	0.6
Feb	11	0.4
Mar	17	0.5
Apr	16	0.5
May		
Jun		
Jul		
Aug		
Sept		
Oct		
Nov		
<b>Grand Total</b>	<b>62</b>	<b>0.5</b>

RT All Calls		
	Average of RT	90th %
Jan	0:07:45	0:15:54
Feb	0:07:27	0:13:19
Mar	0:07:35	0:13:26
Apr	0:07:50	0:14:04
May		
Jun		
Jul		
Aug		
Sept		
Oct		
Nov		
<b>Grand Total</b>	<b>0:07:40</b>	<b>0:14:16</b>

RT P1 & P2 (Lights & Sirens)		
	Average of RT	90th %
Jan	0:07:01	0:11:36
Feb	0:06:49	0:11:02
Mar	0:06:54	0:11:51
Apr	0:07:13	0:12:26
May		
Jun		
Jul		
Aug		
Sept		
Oct		
Nov		
<b>Grand Total</b>	<b>0:06:59</b>	<b>0:11:44</b>

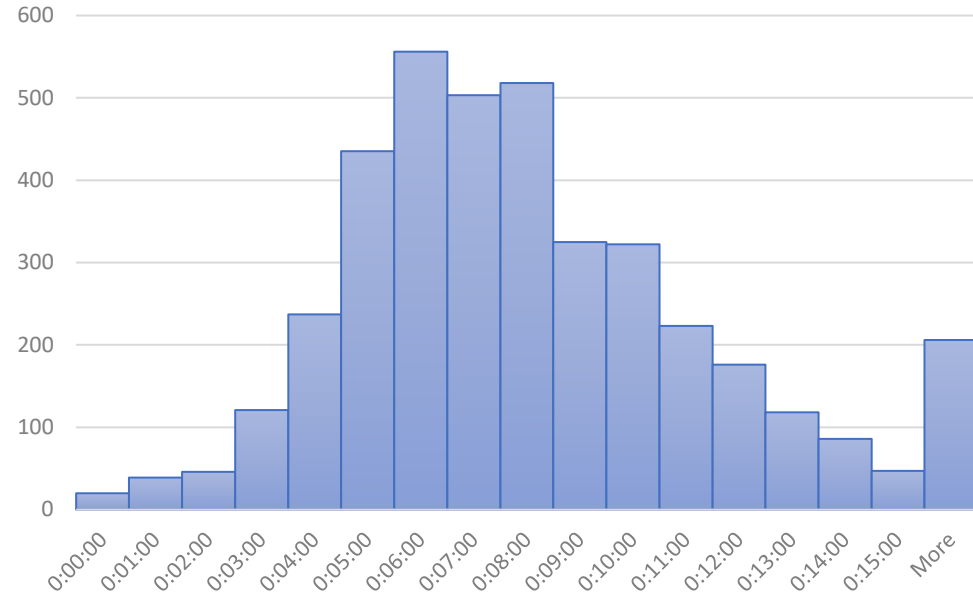


**P1 - 2 Response Time (RT), April 2024**



P1-P2 = Emergency, lights & sirens response  
 P3-P6 = Emergency, no lights & sirens response

**P1 - P6 RT, April 2024**



"More" includes times where units stand-off due to scene safety

Response times (RT) are measured from dispatch to arrival on scene. EMS responds to calls using lights and sirens on Priority 1 and 2 emergency calls only, which was 59% of emergency calls in April.

# Staffing & Workload

Scheduled Unit Hours = 12,240

Produced Unit Hours = 11,294 (92%)

# Sedgwick County EMS Resource Deployment Schedule

revised December 7, 2020; updated 8/13/2023

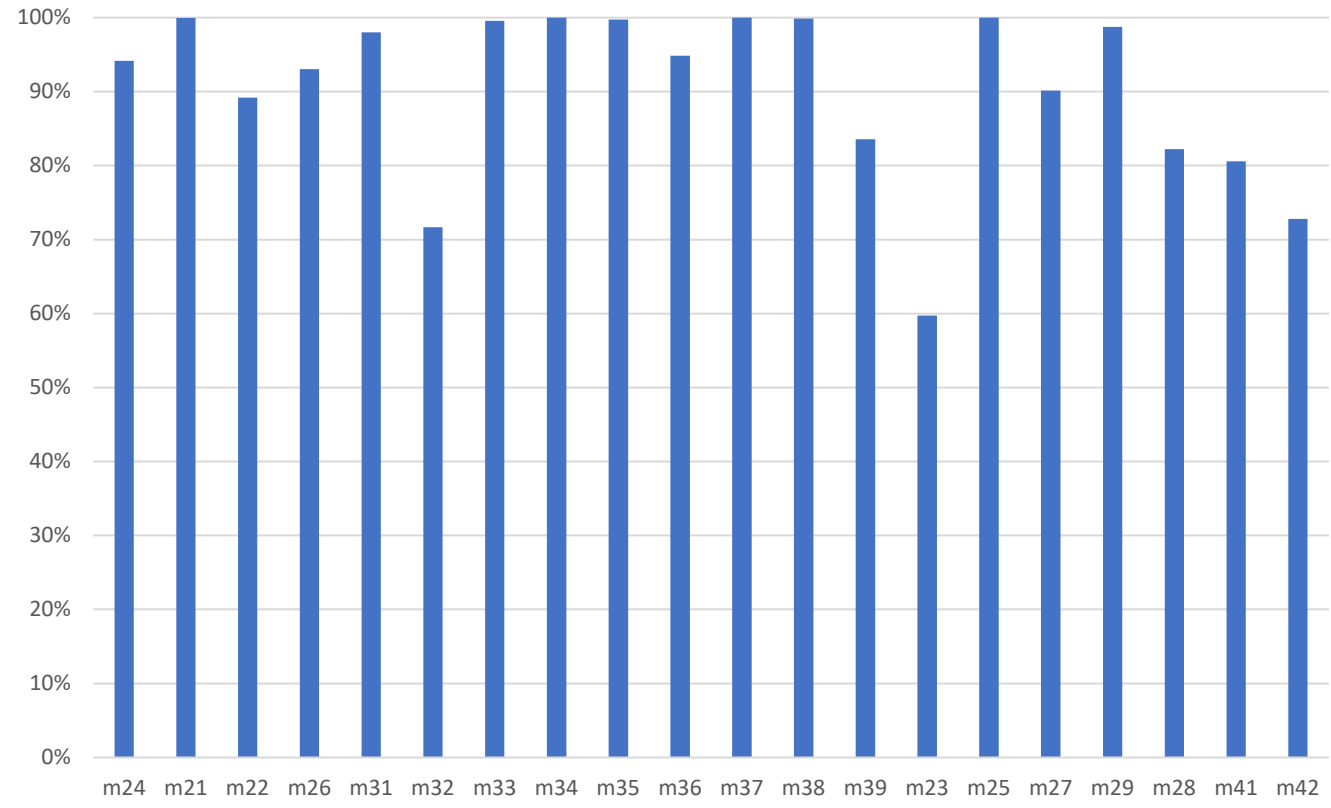
		Unit	Post	Sunday		Monday		Tuesday		Wednesday		Thursday		Friday		Sunday	
<b>Ambulance</b>		<b>21</b>	11														
		<b>22</b>	12														
		<b>26</b>	14														
		<b>27</b>	16														
		<b>31</b>	20														
		<b>32</b>	2														
		<b>33</b>	3	0600-1800	1800-0600	0600-1800	1800-0600	0600-1800	1800-0600	0600-1800	1800-0600	0600-1800	1800-0600	0600-1800	1800-0600	0600-1800	1800-0600
		<b>34</b>	4														
		<b>35</b>	5														
		<b>36</b>	6														
		<b>37</b>	7														
		<b>38</b>	8														
		<b>39</b>	9														
		<b>23</b>	10	0900-2100		0900-2100		0900-2100		0900-2100		0900-2100		0900-2100		0900-2100	
	<b>25</b>	45	0900-2100		0900-2100		0900-2100		0900-2100		0900-2100		0900-2100		0900-2100		
	<b>42</b>	14	0900-2100		0900-2100		0900-2100		0900-2100		0900-2100		0900-2100		0900-2100		
	<b>29</b>	5	1200-0000		1200-0000		1200-0000		1200-0000		1200-0000		1200-0000		1200-0000		
	<b>41</b>	15	1200-0000		1200-0000		1200-0000		1200-0000		1200-0000		1200-0000		1200-0000		
	<b>28</b>	10	1500-0300		1500-0300		1500-0300		1500-0300		1500-0300		1500-0300		1500-0300		
	<b>45 (surge)</b>	20	Varies		Varies		Varies		Varies		Varies		Varies		Varies		
<b>DC</b>	<b>1</b>	3	0600-1800	1800-0600	0600-1800	1800-0600	0600-1800	1800-0600	0600-1800	1800-0600	0600-1800	1800-0600	0600-1800	1800-0600	0600-1800	1800-0600	
	<b>2</b>	5	0600-1800	1800-0600	0600-1800	1800-0600	0600-1800	1800-0600	0600-1800	1800-0600	0600-1800	1800-0600	0600-1800	1800-0600	0600-1800	1800-0600	
	<b>3</b>	10	1000-2200		1000-2200		1000-2200		1000-2200		1000-2200		1000-2200		1000-2200		
<b>CRV</b>	<b>81</b>	81	0600 - 1800		0600 - 1800		0600 - 1800		0600 - 1800		0600 - 1800		0600 - 1800		0600 - 1800		
	<b>82</b>	B1 → 82	0600 - 1800		0600 - 1800		0600 - 1800		0600 - 1800		0600 - 1800		0600 - 1800		0600 - 1800		

DC = District Chief

CRV = Community Response Vehicle



Monthly Unit On Duty %



ALS First Response Vehicle Uptime			
	CRV 81 (Clearwater)	CRV 82 (Cheney)	Ambulances
Hours Scheduled	360	360	12240
Hours staffed	331	322	11294
Percentage staffed	92%	89%	92%