



Sedgwick County



EMS

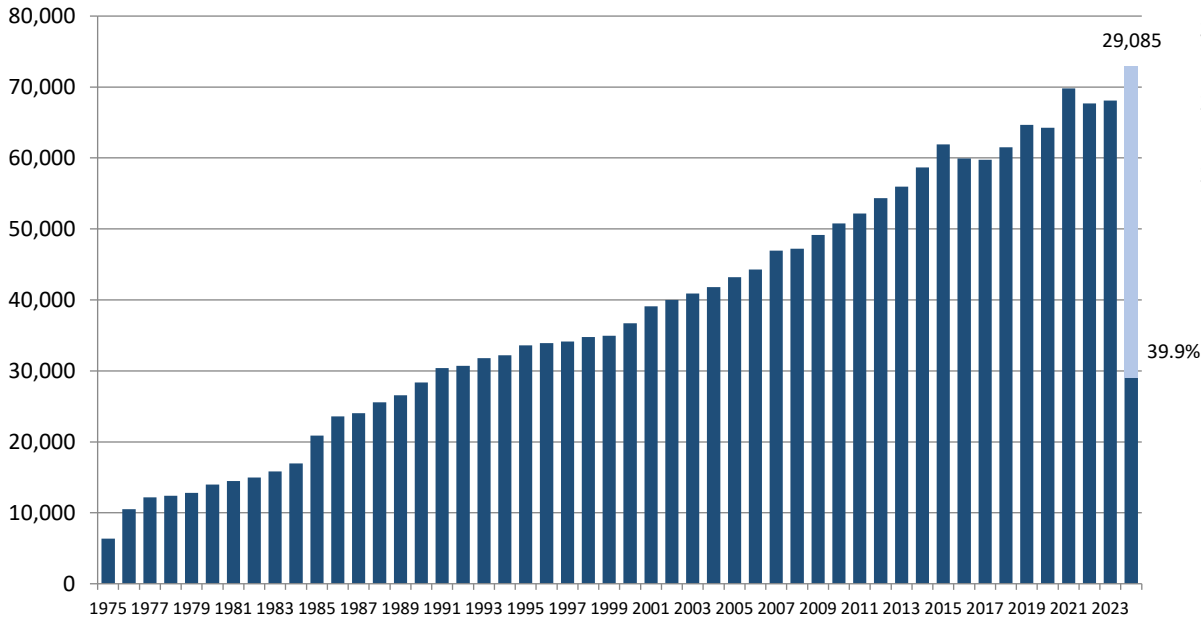


Monthly Operations Report May 2024

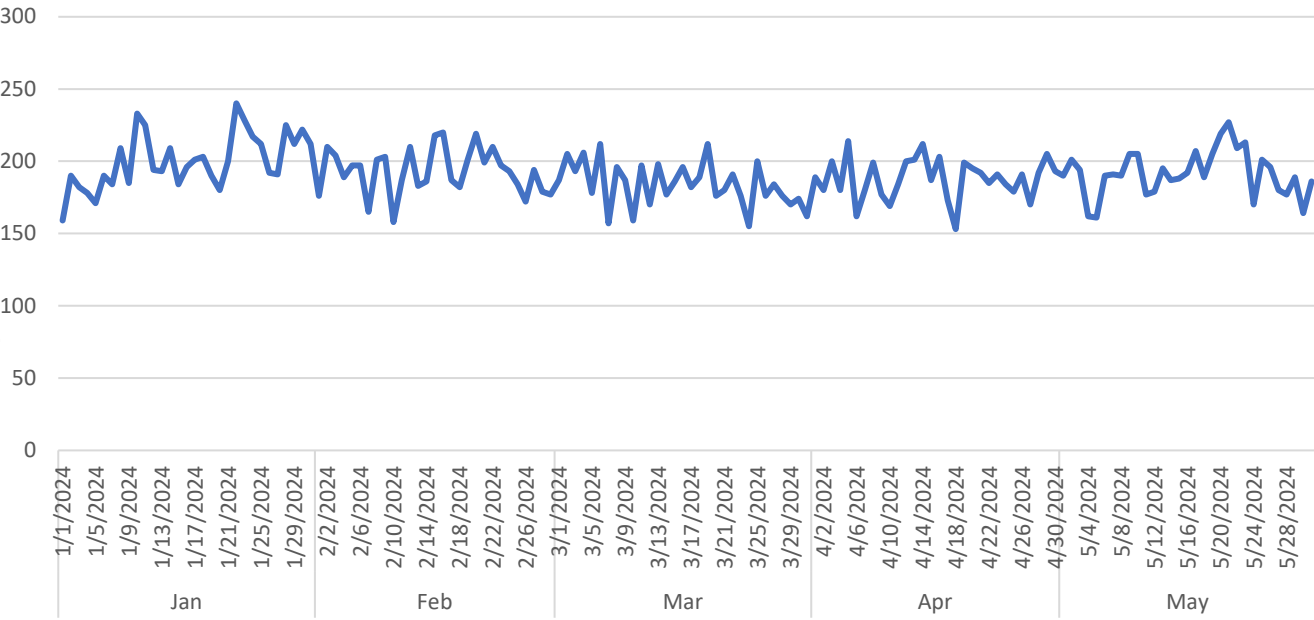
Prepared by Victor Okwo
EMS Systems & Chief Data Officer
June 11, 2024

Call Volume & Response Time

Annual Call Volume



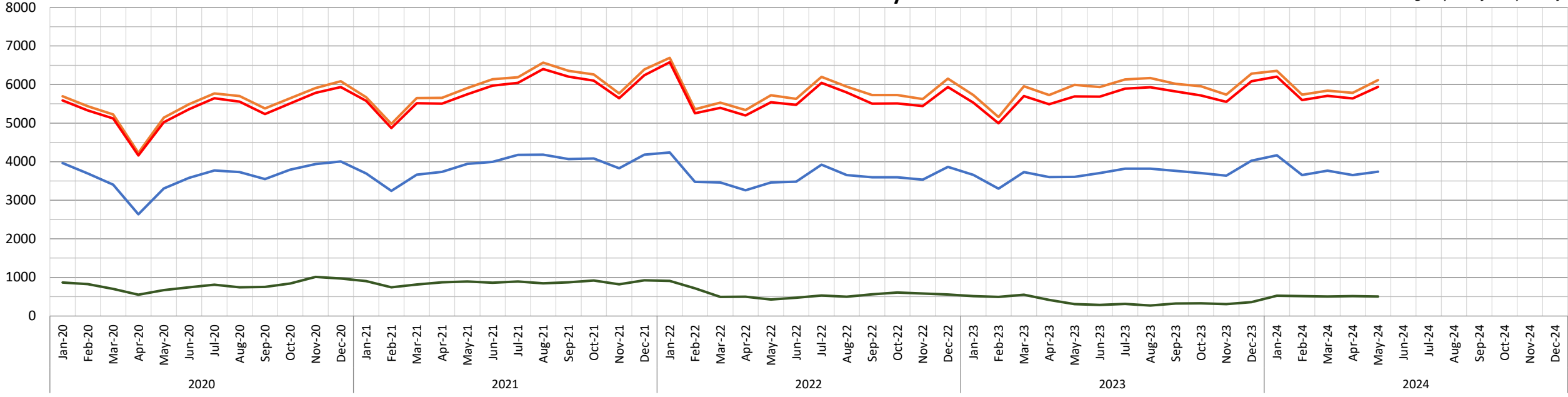
Calls by Day



— Total Patients
 — Total Transports
 — Total P8 Calls
 — Total Calls

Call & Patient Trends by Month

**P8 = Non-emergency interfacility transfer*

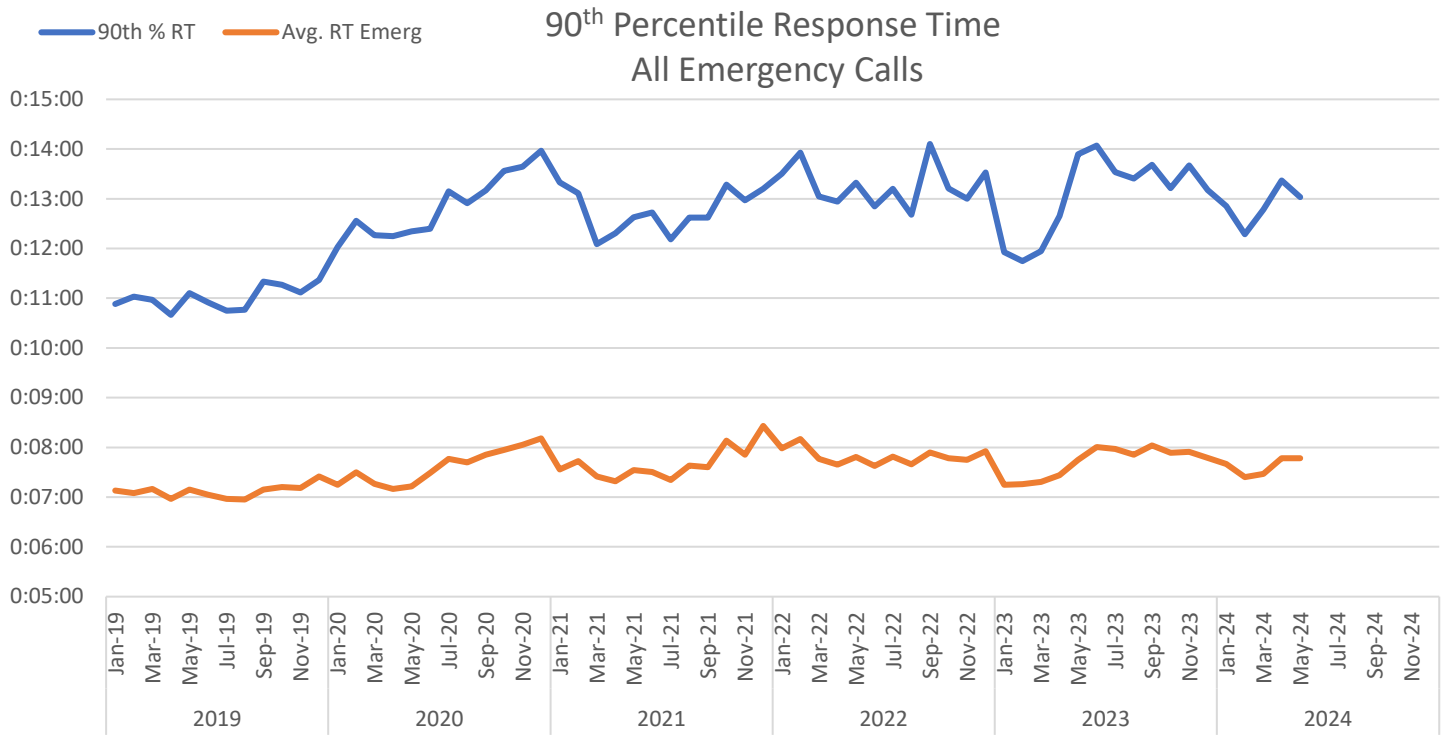


All Calls			Valid Calls			Transports				Non-Emergency		
Row Labels	Count of Call #	Avg/Day	Row Labels	Count of Call #		Row Labels	Count of Call #	Txport %	Txport Valid %	Row Labels	Count of Call #	Avg/Day
Jan	6204	200	Jan	5416	87.3%	Jan	4165	67.1%	76.9%	Jan	522	17
Feb	5598	193	Feb	4954	88.5%	Feb	3650	65.2%	73.7%	Feb	516	18
Mar	5707	184	Mar	5048	88.5%	Mar	3768	66.0%	74.6%	Mar	501	16
Apr	5639	188	Apr	4976	88.2%	Apr	3653	64.8%	73.4%	Apr	515	17
May	5939	192	May	5165	87.0%	May	3743	63.0%	72.5%	May	503	16
Jun			Jun			Jun				Jun		
Jul			Jul			Jul				Jul		
Aug			Aug			Aug				Aug		
Sept			Sept			Sept				Sept		
Oct			Oct			Oct				Oct		
Nov			Nov			Nov				Nov		
Grand Total	29085	191	Grand Total	25558	87.9%	Grand Total	18979	65.3%	74.3%	Grand Total	1539	17

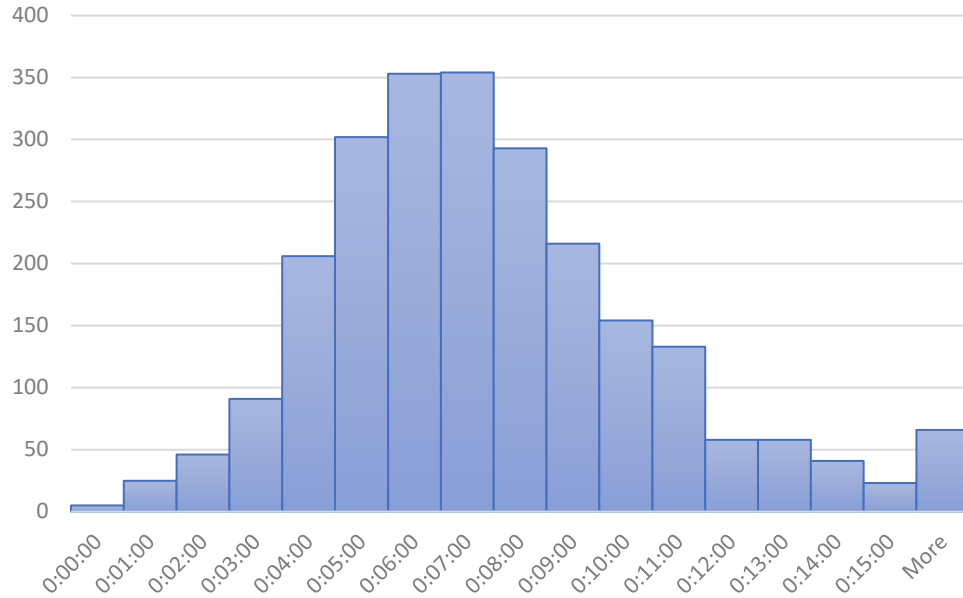
CRV		
Row Labels	Count of Call #	Avg/Day
Jan	18	0.6
Feb	11	0.4
Mar	17	0.5
Apr	16	0.5
May	11	0.4
Jun		
Jul		
Aug		
Sept		
Oct		
Nov		
Grand Total	73	0.5

RT All Calls		
	Average of RT	90th %
Jan	0:07:45	0:15:54
Feb	0:07:27	0:13:19
Mar	0:07:35	0:13:26
Apr	0:07:50	0:14:04
May	0:07:49	0:13:54
Jun		
Jul		
Aug		
Sept		
Oct		
Nov		
Grand Total	0:07:41	0:14:12

RT P1 & P2 (Lights & Sirens)		
	Average of RT	90th %
Jan	0:07:01	0:11:36
Feb	0:06:49	0:11:02
Mar	0:06:54	0:11:51
Apr	0:07:13	0:12:26
May	0:07:02	0:11:35
Jun		
Jul		
Aug		
Sept		
Oct		
Nov		
Grand Total	0:07:00	0:11:42

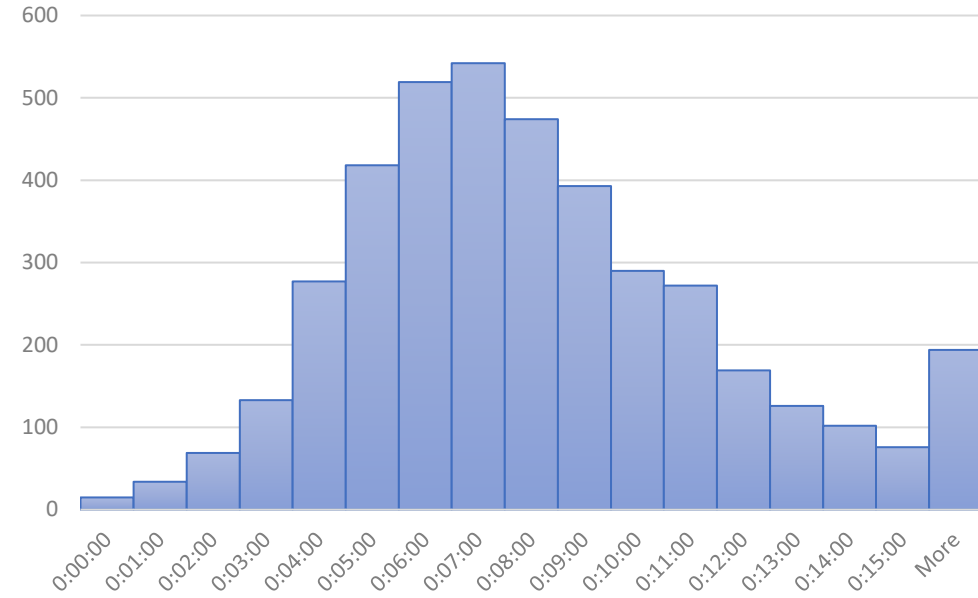


P1 - 2 Response Time (RT), May 2024



P1-P2 = Emergency, lights & sirens response
 P3-P6 = Emergency, no lights & sirens response

Emergency Call RT, May 2024



"More" includes times where units stand-off due to scene safety

Response times (RT) are measured from dispatch to arrival on scene. EMS responds to calls using lights and sirens on Priority 1 and 2 emergency calls only, which was 59% of emergency calls in May.

Staffing & Workload

Scheduled Unit Hours = 12,648

Produced Unit Hours = 11,295 (89%)

Sedgwick County EMS Resource Deployment Schedule

revised December 7, 2020; updated 8/13/2023

		Unit	Post	Sunday		Monday		Tuesday		Wednesday		Thursday		Friday		Sunday		
Ambulance		21	11															
			22	12														
			26	14														
			27	16														
			31	20														
			32	2														
			33	3	0600-1800	1800-0600	0600-1800	1800-0600	0600-1800	1800-0600	0600-1800	1800-0600	0600-1800	1800-0600	0600-1800	1800-0600	0600-1800	1800-0600
			34	4														
			35	5														
			36	6														
			37	7														
			38	8														
			39	9														
		23	10	0900-2100		0900-2100		0900-2100		0900-2100		0900-2100		0900-2100		0900-2100		
		25	45	0900-2100		0900-2100		0900-2100		0900-2100		0900-2100		0900-2100		0900-2100		
		42	14	0900-2100		0900-2100		0900-2100		0900-2100		0900-2100		0900-2100		0900-2100		
		29	5	1200-0000		1200-0000		1200-0000		1200-0000		1200-0000		1200-0000		1200-0000		
		41	15	1200-0000		1200-0000		1200-0000		1200-0000		1200-0000		1200-0000		1200-0000		
		28	10	1500-0300		1500-0300		1500-0300		1500-0300		1500-0300		1500-0300		1500-0300		
		45 (surge)	20	Varies		Varies		Varies		Varies		Varies		Varies		Varies		
DC		1	3	0600-1800	1800-0600	0600-1800	1800-0600	0600-1800	1800-0600	0600-1800	1800-0600	0600-1800	1800-0600	0600-1800	1800-0600	0600-1800	1800-0600	
		2	5	0600-1800	1800-0600	0600-1800	1800-0600	0600-1800	1800-0600	0600-1800	1800-0600	0600-1800	1800-0600	0600-1800	1800-0600	0600-1800	1800-0600	
		3	10	1000-2200		1000-2200		1000-2200		1000-2200		1000-2200		1000-2200		1000-2200		
CRV		81	81	0600 - 1800		0600 - 1800		0600 - 1800		0600 - 1800		0600 - 1800		0600 - 1800		0600 - 1800		
		82	B1 → 82	0600 - 1800		0600 - 1800		0600 - 1800		0600 - 1800		0600 - 1800		0600 - 1800		0600 - 1800		

DC = District Chief

CRV = Community Response Vehicle

ALS First Response Vehicle Uptime			
	CRV 81 (Clearwater)	CRV 82 (Cheney)	Ambulances
Hours Scheduled	372	372	12648
Hours staffed	287.5	296	11295
Percentage staffed	77%	80%	89%

Monthly Unit On Duty %

