

Public Services Community Programs

Mission: Public Services Community Programs’ mission is to promote health and wellness, independence, and improved functioning for individuals served.

Timothy V. Kaufman
Deputy County Manager

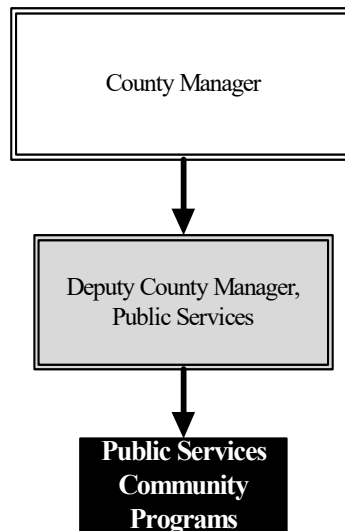
100 N. Broadway, Suite 630
Wichita, KS 67202
316.660.7674

tim.kaufman@sedgwick.gov

Overview

Public Services Community Programs is involved in a number of initiatives across the County and represents the County in the community with other social service providers.

Sedgwick County provides funding to the Child Advocacy Center (CAC) of Sedgwick County. The CAC connects resources and services together under one roof to more efficiently and effectively serve children and families who have experienced abuse. Primary stakeholders include the Exploited and Missing Child Unit (EMCU), which is a three-way partnership between the Kansas Department for Children and Families (DCF), Wichita Police Department (WPD), and the Sedgwick County Sheriff’s Office. Multiple other community partners also collaborate with the CAC for services provided to children and families following abuse.



Strategic Goals:

- Support the Child Advocacy Center in its efforts to lead the community in eliminating the suffering of abused children

Highlights

Community Programs Allocations

	2023 Actual	2024 Revised	2025 Budget
Child Advocacy Center	\$2,205,000	\$218,000	\$218,000
Miscellaneous	\$33,000	\$33,000	-
Total	\$2,238,000	\$251,000	\$218,000



Accomplishments and Strategic Results

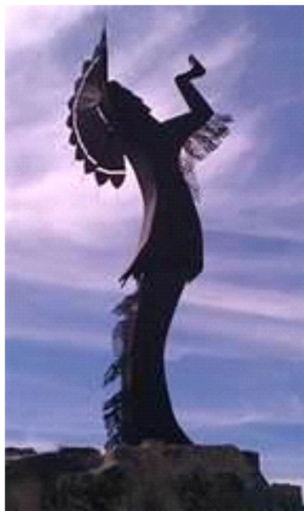
Accomplishments

One hundred percent of the clients seen by child family advocates were offered additional services for a variety of needs, including but not limited to therapy, basic needs, financial assistance, medical assistance, filing for a Protection From Abuse (PFA) order, and completing an application for Crime Victims Compensation. The CAC is staffed with a Multi-Disciplinary Team made up of employees from a variety of support agencies including EMCU, DCF, WPD, and the Sheriff's Office, as well as social service agencies, prosecution, other non-profit agencies, and health care providers. These dedicated professionals serve children and families in their time of greatest need.

Strategic Results

Public Services Community Programs continues to recognize the important role that nonprofits play in the delivery of County services and the desire to ensure the availability of strong and effective partners. The CAC is an example of leveraging partnerships with community stakeholders so that the needs of those requiring assistance related to public health, behavioral health, disabilities, aging, homelessness, and housing are addressed.

In 2023, the CAC was responsible for serving a total of 1,616 abused or neglected children and 1,154 non-offending caregivers. Additionally, the CAC met all eight measured outcomes through the contract monitoring process, including measures related to mental health services referrals and referrals for additional appropriate services.

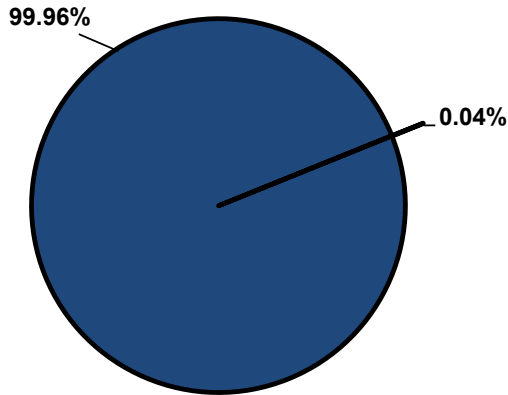


Significant Budget Adjustments

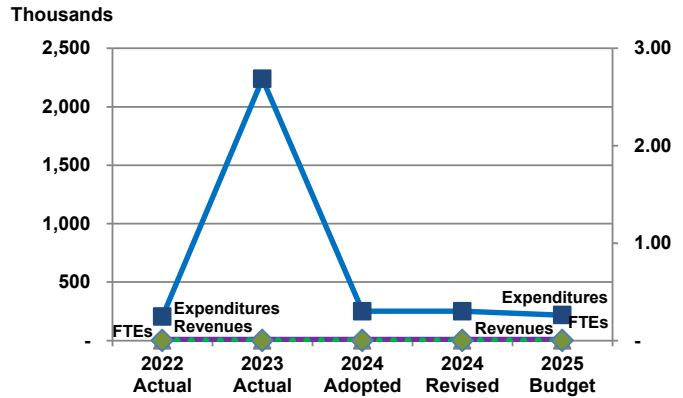
Significant adjustments to the Public Services Community Program's 2025 Recommended Budget include a \$33,000 decrease in contractals to offset budget imbalance.

Departmental Graphical Summary

Public Serv. Comm. Programs
Percent of Total County Operating Budget



Expenditures, Program Revenue & FTEs
All Operating Funds



Budget Summary by Category

	2022 Actual	2023 Actual	2024 Adopted	2024 Revised	2025 Budget	Amount Chg '24 Rev.-'25	% Chg '24 Rev.-'25
Expenditures							
Personnel	-	-	-	-	-	-	-
Contractual Services	205,000	2,238,000	251,000	251,000	218,000	(33,000)	-13.15%
Debt Service	-	-	-	-	-	-	-
Commodities	-	-	-	-	-	-	-
Capital Improvements	-	-	-	-	-	-	-
Capital Equipment	-	-	-	-	-	-	-
Interfund Transfers	-	-	-	-	-	-	-
Total Expenditures	205,000	2,238,000	251,000	251,000	218,000	(33,000)	-13.15%
Revenues							
Tax Revenues	-	-	-	-	-	-	-
Licenses and Permits	-	-	-	-	-	-	-
Intergovernmental	-	-	-	-	-	-	-
Charges for Services	-	-	-	-	-	-	-
All Other Revenue	-	-	-	-	-	-	-
Total Revenues	-	-	-	-	-	-	-
Full-Time Equivalents (FTEs)							
Property Tax Funded	-	-	-	-	-	-	-
Non-Property Tax Funded	-	-	-	-	-	-	-
Total FTEs	-	-	-	-	-	-	-

Budget Summary by Fund

	2022 Actual	2023 Actual	2024 Adopted	2024 Revised	2025 Budget	Amount Chg '24 Rev.-'25	% Chg '24 Rev.-'25
Fund							
General Fund	205,000	2,238,000	251,000	251,000	218,000	(33,000)	-13.15%
Total Expenditures	205,000	2,238,000	251,000	251,000	218,000	(33,000)	-13.15%



Significant Budget Adjustments from Prior Year Revised Budget

	Expenditures	Revenues	FTEs
Reduce contractual budget to offset budget imbalance	(33,000)		
Total	(33,000)	-	-

Budget Summary by Program

Program	Fund	2022 Actual	2023 Actual	2024 Adopted	2024 Revised	2025 Budget	% Chg '24 Rev.-'25	24-'25' FTEs
Community Programs	110	-	33,000	33,000	33,000	-	-100.00%	-
Child Advocacy Center	110	205,000	2,205,000	218,000	218,000	218,000	0.00%	-
Total		205,000	2,238,000	251,000	251,000	218,000	-13.15%	-



• Community Programs

Budget was established in 2023 and 2024 for limited-time funding for the Mental Health and Substance Abuse Coalition.

Fund(s): 110 - County general

Expenditures	2022 Actual	2023 Actual	2024 Adopted	2024 Revised	2025 Budget	Amnt. Chg. '24 - '25	% Chg. '24 - '25
Personnel	-	-	-	-	-	-	0.0%
Contractual Services	-	33,000	33,000	33,000	-	(33,000)	-100.0%
Debt Service	-	-	-	-	-	-	0.0%
Commodities	-	-	-	-	-	-	0.0%
Capital Improvements	-	-	-	-	-	-	0.0%
Capital Equipment	-	-	-	-	-	-	0.0%
Interfund Transfers	-	-	-	-	-	-	0.0%
Total Expenditures	-	33,000	33,000	33,000	-	(33,000)	-100.0%
Revenues							
Taxes	-	-	-	-	-	-	0.0%
Intergovernmental	-	-	-	-	-	-	0.0%
Charges For Service	-	-	-	-	-	-	0.0%
All Other Revenue	-	-	-	-	-	-	0.0%
Total Revenues	-	-	-	-	-	-	0.0%
Full-Time Equivalents (FTEs)	-	-	-	-	-	-	0.0%

• Child Advocacy Center

The Child Advocacy Center (CAC) of Sedgwick County was developed to coordinate resources and services under one roof to more efficiently and effectively serve children who have experienced abuse. Kansas Department for Children and Families (DCF), Wichita Police Department (WPD), and the Sedgwick County Sheriff's Office together formed the Exploited and Missing Child Unit (EMCU) in 1985. These stakeholders form a Multi-Disciplinary Team for handling child abuse cases. Services provided by these stakeholders include social work from DCF and investigations from the Sheriff's Office and the WPD. COMCARE provides referral options in assisting children and families with coping with the mental issues regarding these types of cases. All involved in the CAC and EMCU have been specially trained to mitigate trauma to child victims, protect the questioning of child victims from validity issues, and more importantly not expose child victims to the suspect.

Fund(s): 110 - County general

Expenditures	2022 Actual	2023 Actual	2024 Adopted	2024 Revised	2025 Budget	Amnt. Chg. '24 - '25	% Chg. '24 - '25
Personnel	-	-	-	-	-	-	0.0%
Contractual Services	205,000	2,205,000	218,000	218,000	218,000	-	0.0%
Debt Service	-	-	-	-	-	-	0.0%
Commodities	-	-	-	-	-	-	0.0%
Capital Improvements	-	-	-	-	-	-	0.0%
Capital Equipment	-	-	-	-	-	-	0.0%
Interfund Transfers	-	-	-	-	-	-	0.0%
Total Expenditures	205,000	2,205,000	218,000	218,000	218,000	-	0.0%
Revenues							
Taxes	-	-	-	-	-	-	0.0%
Intergovernmental	-	-	-	-	-	-	0.0%
Charges For Service	-	-	-	-	-	-	0.0%
All Other Revenue	-	-	-	-	-	-	0.0%
Total Revenues	-	-	-	-	-	-	0.0%
Full-Time Equivalents (FTEs)	-	-	-	-	-	-	0.0%

