



Sedgwick County  
Register of Deeds - Tonya Buckingham  
Doc.#/Flm-Pg: 30304454

Receipt #: 2423993  
Pages Recorded: 4

Recording Fee: 0.00

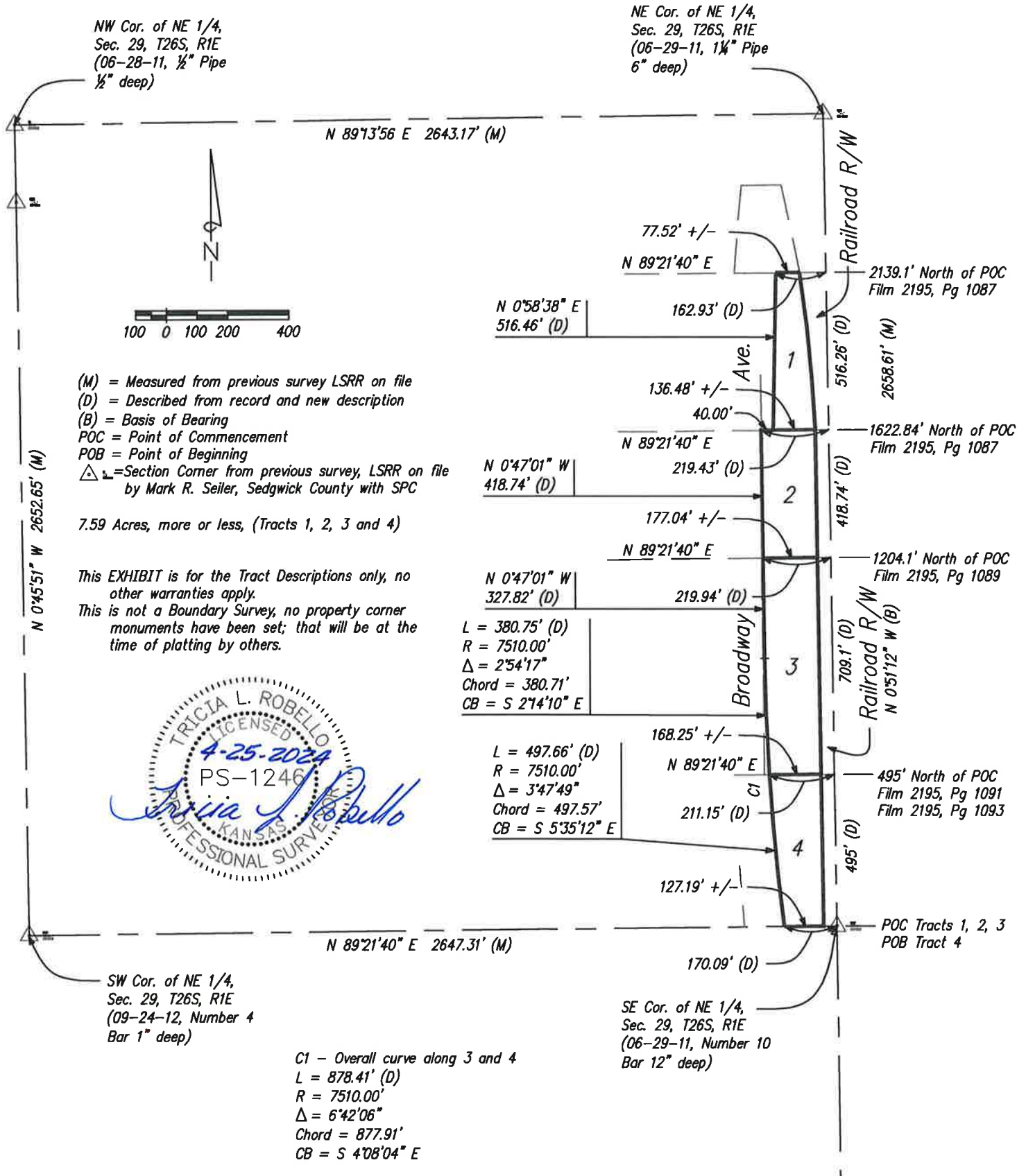
Cashier: Ketigall  
Authorized By: *Tonya Buckingham*  
Date Recorded: 04/25/2024 01:35:12 PM



**Please do not remove this cover page, it has become part of this document**

Grantor	ROBELLO TRICIA L PS 1246
Grantee	UNPLATTED
Type of Document	PLAT.SURV
Recording Fees	\$0.00
Mtg Reg Tax	\$0.00
Total Amount	\$0.00
Return Address	SEDGWICK COUNTY PUBLIC WORKS FRONT COUNTER

# EXHIBIT



#### Tract 1

A tract of land in the Northeast Quarter of Section 29, Township 26 South, Range 1 East of the 6<sup>th</sup> P.M., Sedgwick County, Kansas being described by Tricia L. Robello, PS #1246 on this 9th day of February, 2024 as follows: Commencing at the Southeast Corner of said Northeast Quarter; thence N 0°51'12" W (Basis of bearing NAD 83 Kansas South Zone) along the East line of said Northeast Quarter, a distance of 1622.84 feet to the point of beginning; thence S 89°21'40" W parallel with the South line of said Northeast Quarter, a distance of 179.43 feet; thence N 0°58'38" E, a distance of 516.46 feet; thence N 89°21'40" E parallel with the South line of said Northeast Quarter, a distance of 162.93 feet, said point being 2139.1 feet North of the Southeast Corner of said Northeast Quarter; thence S 0°51'12" E along the East line of said Northeast Quarter, a distance of 516.26 feet to the point of beginning. EXCEPT the Railroad Right-of-Way on the East.

#### Tract 2

A tract of land in the Northeast Quarter of Section 29, Township 26 South, Range 1 East of the 6<sup>th</sup> P.M., Sedgwick County, Kansas being described by Tricia L. Robello, PS #1246 on this 9th day of February, 2024 as follows: Commencing at the Southeast Corner of said Northeast Quarter; thence N 0°51'12" W (Basis of bearing NAD 83 Kansas South Zone) along the East line of said Northeast Quarter, a distance of 1204.1 feet to the point of beginning; thence S 89°21'40" W parallel with the South line of said Northeast Quarter, a distance of 219.94 feet; thence N 0°47'01" W, a distance of 418.74 feet; thence N 89°21'40" E parallel with the South line of said Northeast Quarter, a distance of 219.46 feet to a point on the East line of said Northeast Quarter, said point being 1622.84 feet North of the Southeast Corner of said Northeast Quarter; thence S 0°51'12" E along the East line of said Northeast Quarter, a distance of 418.74 feet to the point of beginning. EXCEPT the Railroad Right-of-Way on the East.

#### Tract 3

A tract of land in the Northeast Quarter of Section 29, Township 26 South, Range 1 East of the 6<sup>th</sup> P.M., Sedgwick County, Kansas being described by Tricia L. Robello, PS #1246 on this 9th day of February, 2024 as follows: Commencing at the Southeast Corner of said Northeast Quarter; thence N 0°51'12" W (Basis of bearing NAD 83 Kansas South Zone) along the East line of said Northeast Quarter, a distance of 495 feet to the point of beginning; thence S 89°21'40" W parallel with the South line of said Northeast Quarter, a distance of 211.15 feet; thence Northwesterly along a non-tangent curve to the right, a distance of 380.75 feet, said curve having a radius of 7510.00 feet, a central angle of 2°54'17", a chord distance of 380.71 feet bearing N 2°14'10" W; thence N 0°47'01" W, a distance of 327.82 feet; thence N 89°21'40" E parallel with the South line of said Northeast Quarter, a distance of 219.94 feet to a point on the East line of said Northeast Quarter, said point being 1204.1 feet North of the Southeast Corner of said Northeast Quarter; thence S 0°51'12" E along the East line of said Northeast Quarter, a distance of 709.1 feet to the point of beginning. EXCEPT the Railroad Right-of-Way on the East.

Tract 4

A tract of land in the Northeast Quarter of Section 29, Township 26 South, Range 1 East of the 6<sup>th</sup> P.M., Sedgwick County, Kansas being described by Tricia L. Robello, PS #1246 on this 9th day of February, 2024 as follows: Beginning at the Southeast Corner of said Northeast Quarter; thence N 0°51'12" W (Basis of bearing NAD 83 Kansas South Zone) along the East line of said Northeast Quarter, a distance of 495 feet; thence S 89°21'40" W parallel with the South line of said Northeast Quarter, a distance of 211.15 feet; thence Southeasterly along a non-tangent curve to the left, a distance of 497.66 feet, said curve having a radius of 7510.00 feet, a central angle of 3°47'49", a chord distance of 497.57 feet bearing S 5°35'12" E, to a point on the South line of said Northeast Quarter; thence N 89°21'40" E along the South line of said Northeast Quarter, a distance of 170.09 feet to the point of beginning. EXCEPT the Railroad Right-of-Way on the East.

The above contiguous tracts of land being described as follows:

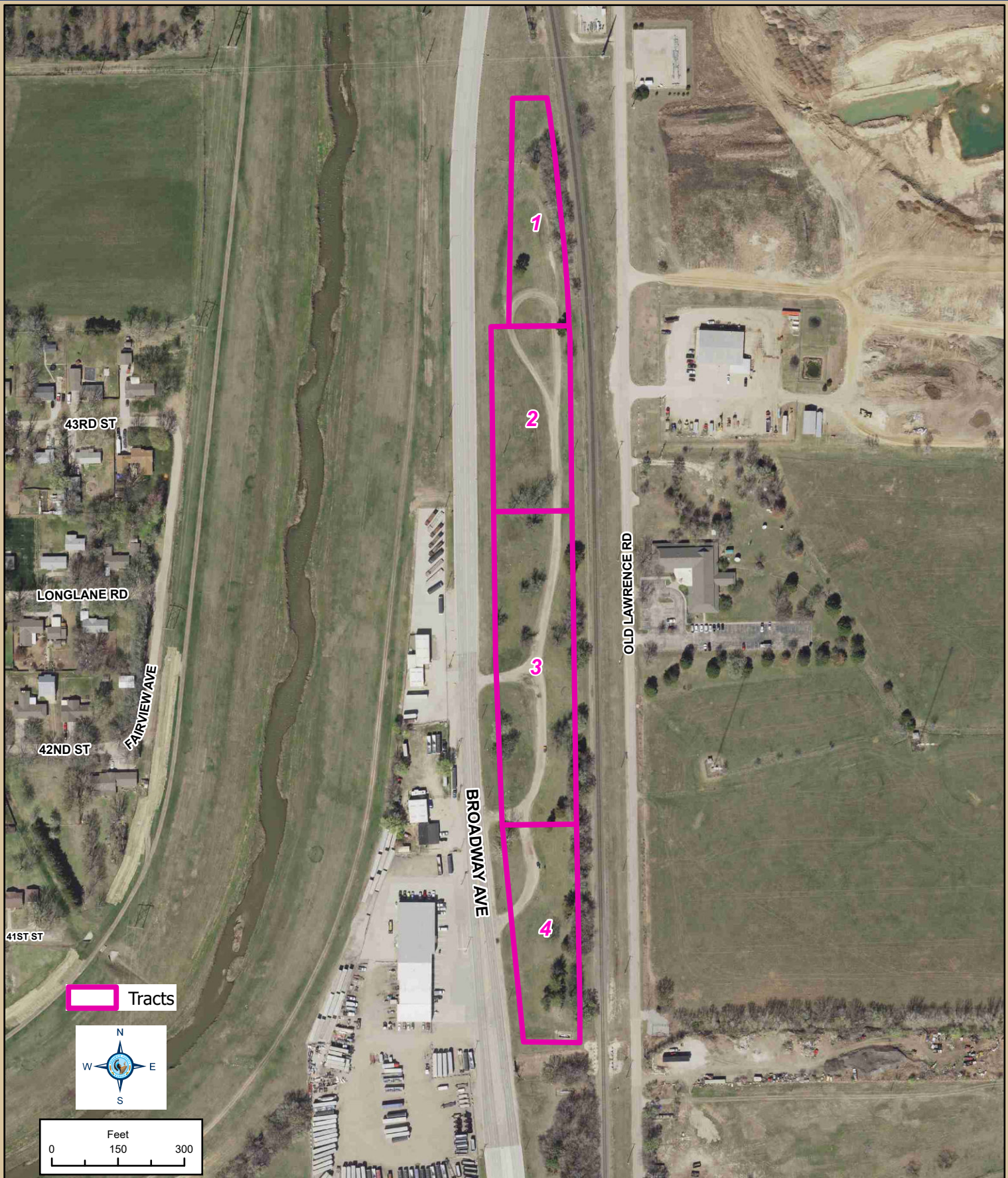
A tract of land in the Northeast Quarter of Section 29, Township 26 South, Range 1 East of the 6<sup>th</sup> P.M., Sedgwick County, Kansas being described by Tricia L. Robello, PS #1246 on this 9th day of February, 2024 as follows: Beginning at the Southeast Corner of said Northeast Quarter; thence N 0°51'12" W (Basis of bearing NAD 83 Kansas South Zone) along the East line of said Northeast Quarter, a distance of 2139.1 feet; thence S 89°21'40" W parallel with the South line of said Northeast Quarter, a distance of 162.93 feet; thence S 0°58'38" W, a distance of 516.46 feet; thence S 89°21'40" W parallel with the South line of said Northeast Quarter, a distance of 40.00 feet; thence S 0°47'01" E, a distance of 746.56 feet; thence Southeasterly along a tangent curve to the left, a distance of 878.41 feet, said curve having a radius of 7510.00 feet, a central angle of 6°42'06", a chord distance of 877.91 feet bearing S 4°08'04" E, to a point on the South line of said Northeast Quarter; thence N 89°21'40" E along the South line of said Northeast Quarter, a distance of 170.09 feet to the point of beginning. EXCEPT the Railroad Right-of-Way on the East.

Said contiguous tract contains 7.59 acres, more or less, excluding Railroad Right-of-Way.



By: \_\_\_\_\_

Tricia L. Robello, PS #1246  
Deputy County Surveyor  
Sedgwick County, Kansas



## North Broadway Area

Sedgwick County, Kansas

Date: 9/10/2024