

Sedgwick County Munger Building Juvenile Field Services Remodel

5278.46

This Addendum is hereby made part of the Contract Documents to the same extent as though it were originally included therein.

5 All Contractors, Subcontractors and suppliers are reminded that they shall be familiar with all Addenda items (as well as all parts of the Construction Documents) so as to understand the extent of their work and its interrelation with other trades.

To all bidders for furnishing all labor and materials necessary for the following Contract:

10 **SEDGWICK COUNTY MUNGER BUILDING**  
INTERIOR PAINTING

15 538 N. Main  
Wichita, Kansas 67203

Prepared by:  
Schaefer Architecture, Inc.

20 **GENERAL:**

---

25 **CLARIFICATION:** Field paint color will match Sherwin Williams SW 7036 Accessible Beige. Metal railings, stair risers, and door frames will receive paint to match Sherwin Williams SW 7025 Backdrop.

Remove and dispose of signage, bulletin boards, white boards, projector screen, and fixtures.

30 Contractor will need to protect all existing wood trim, wood wall base, wood/laminate sills, countertops, and tile walls/flooring.

Remove corner guards and salvage for owner’s use.

35 Do not paint electrical panels and elevators.

Protect fire safety fixtures. They will remain as is.

40 Second floor ceiling was installed over wallpaper. Cut wallpaper at the ceiling grid to remove. Third floor wallpaper stops short of ceiling grid.

Existing vinyl wall base and carpet will be removed by a separate flooring contractor. New wall base will be provided and installed by said flooring contractor.

45 **INFORMATION REQUESTS:**

---

**QUESTION:** What’s the total square footage of the project?

**ANSWER:** Building plan overall is 18,675 sf. 1st floor plan is 4,426 sf; 2nd floor plan is 4,548 sf; and 3rd floor plan is 4,473 sf.

50 **QUESTION:** What’s the total square footage of wallpaper on the 2<sup>nd</sup>, 3<sup>rd</sup> floor, and stairways?

**ANSWER:** The contractor is expected to determine area for themselves.

**QUESTION:** Is it possible to use paint other than Sherwin Williams if the color can be matched and provide the same quality paint?

**ANSWER:** Paint spec for the previous project is provided. The substitute product needs to meet or exceed the spec provided.

5

**QUESTION:** Does the bid need to include the basement.

**ANSWER:** No, but the south stair well (middle of plan) needs to include painting up to the basement door.

10

**QUESTION:** Do lightswitches and receptacle coverplates need to be removed?

**ANSWER:** Yes, remove coverplates and reinstall once painting is complete.

15

**QUESTION:** Are soffits included in the project scope?

**ANSWER:** Paint all side of soffits.

15

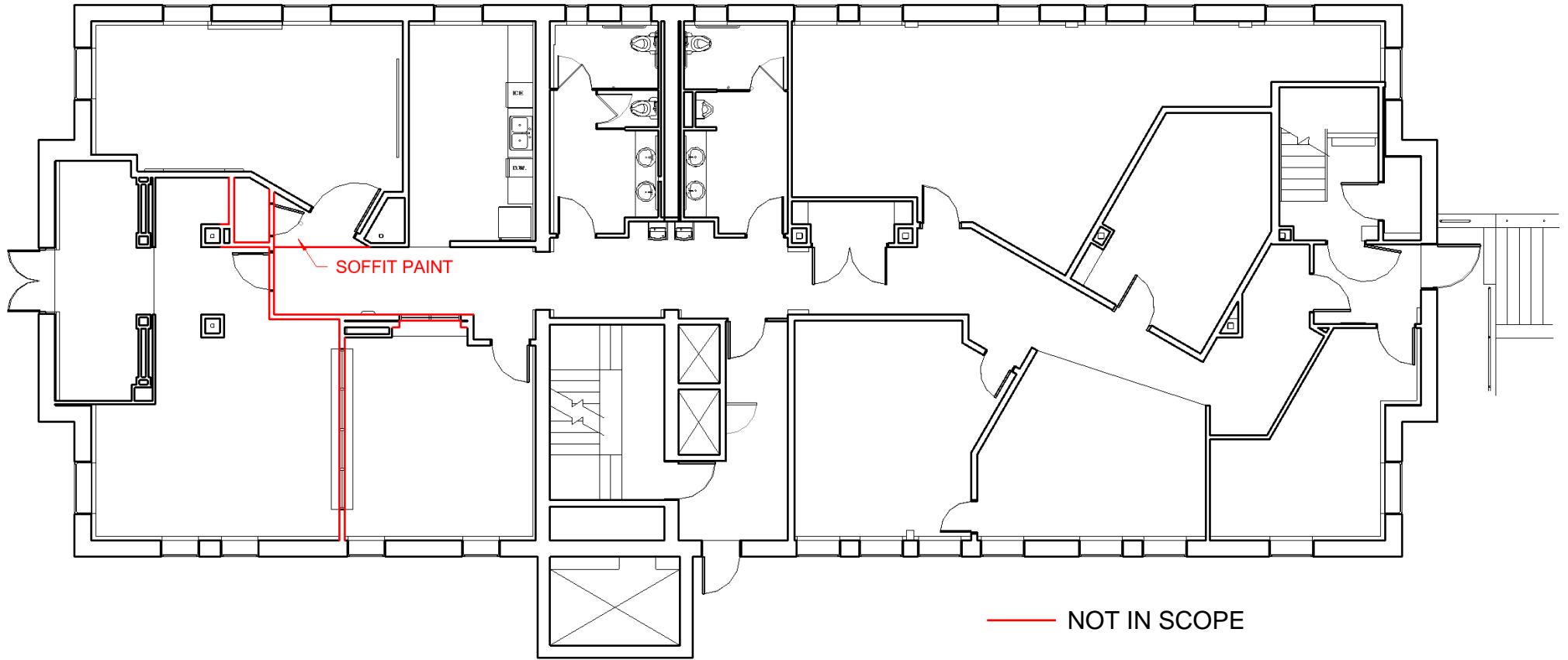
## **ATTACHMENTS**

---

20

**SHEETS:** MUNGER FIRST FLOOR PAINT PLAN  
09 91 23 INTERIOR PAINTING

**END OF ADDENDUM NUMBER 1**



# Munger Building - First Floor

Not To Scale



**SECTION 09 91 23 - INTERIOR PAINTING**

**PART 1 GENERAL**

**1.01 SECTION INCLUDES**

- A. Surface preparation.
- B. Field application of paints.
- C. Scope: Finish interior surfaces exposed to view, unless fully factory-finished and unless otherwise indicated including the following:
  - 1. General: Paint all exposed surfaces, except as otherwise indicated, whether or not colors are designated. If not designated, match adjacent painted surface; if not in a painted surface, in general match trim color.
  - 2. Both sides and edges of plywood backboards for electrical and telecom equipment before installing equipment.
  - 3. Prime surfaces to receive wall coverings and digitally printed wall coverings.
  - 4. Mechanical and Electrical:
    - a. In finished areas, paint insulated and exposed pipes, grilles registers and louvers which are not already factory pre-finished, conduit, grilles registers and louvers which are not already factory pre-finished, boxes, grilles registers and louvers which are not already factory pre-finished, insulated and exposed ducts, grilles registers and louvers which are not already factory pre-finished, hangers brackets collars and supports, grilles registers and louvers which are not already factory pre-finished, mechanical equipment, grilles registers and louvers which are not already factory pre-finished, electrical equipment, grilles registers and louvers which are not already factory pre-finished, and grilles registers and louvers which are not already factory pre-finished, unless otherwise indicated.
    - b. In finished areas, paint shop-primed items.
  - 5. Mechanical, electrical, utility and custodial spaces: Walls and ceilings or structure, as applicable, be finish painted where visible from normal level viewing. In this situation paint pipe, conduit fittings, accessories, etc., mounted at surfaces or within structure to be painted (more easily painted than masked out). Painting of ducts is required. Painting of piping, conduit, fittings, accessories, etc., positioned away from painted surfaces (not requiring masking to prevent being painted) is not required.
- D. Do Not Paint or Finish the Following Items:
  - 1. Items factory-finished unless otherwise indicated; materials and products having factory-applied primers are not considered factory finished.
  - 2. Unless otherwise indicated, shop priming of ferrous metal items and fabricated components are included under their respective trades.
  - 3. Items indicated to receive other finishes.
  - 4. Items indicated to remain unfinished.
  - 5. Fire rating labels, equipment serial number and capacity labels, bar code labels, and operating parts of equipment.
  - 6. Stainless steel, anodized aluminum, bronze, terne coated stainless steel, and lead items.
  - 7. Marble, granite, slate, and other natural stones.

8. Floors, unless specifically indicated.
9. Ceramic and other tiles.
10. Brick, architectural concrete, cast stone, integrally colored plaster and stucco.
11. Glass.
12. Concrete masonry units in utility, mechanical, and electrical spaces.
13. Acoustical materials, unless specifically indicated.
14. Concealed pipes, ducts, and conduits.

### **1.02 RELATED REQUIREMENTS**

- A. Section 09 93 00 - Staining and Transparent Finishing: Wood carpentry.

### **1.03 REFERENCE STANDARDS**

- A. 40 CFR 59, Subpart D - National Volatile Organic Compound Emission Standards for Architectural Coatings; U.S. Environmental Protection Agency; current edition.
- B. ASTM D4442 - Standard Test Methods for Direct Moisture Content Measurement of Wood and Wood-Based Materials; 2020.
- C. MPI (APSM) - Master Painters Institute Architectural Painting Specification Manual; Current Edition.
- D. SSPC V1 (PM1) - Good Painting Practice: Painting Manual, Volume 1; Fourth Edition.
- E. SSPC V2 (PM2) - Systems and Specifications: Steel Structures Painting Manual, Volume 2; Fourth Edition.
- F. SSPC-SP 1 - Solvent Cleaning; 2015, with Editorial Revision (2016).
- G. SSPC-SP 2 - Hand Tool Cleaning; 2018.
- H. SSPC-SP 3 - Power Tool Cleaning; 2018.
- I. SSPC-SP 6 - Commercial Blast Cleaning; 2007.
- J. SSPC-SP 13 - Surface Preparation of Concrete; 1997 (Reaffirmed 2003).

### **1.04 SUBMITTALS**

- A. See Section 01 30 00 - Administrative Requirements, for submittal procedures.
- B. Product Data: Provide complete list of products to be used, with the following information for each:
  1. Manufacturer's name, product name and/or catalog number, and general product category (e.g. "alkyd enamel").
  2. Cross-reference to specified paint system(s) product is to be used in; include description of each system.
- C. Samples for Initial Selection: For each type of topcoat product indicated.
  1. Color schedules will be furnished to General Contractor, by Schaefer, before application of prime coats.
- D. Manufacturer's Instructions: Indicate special surface preparation procedures.

### **1.05 QUALITY ASSURANCE**

- A. Manufacturer Qualifications: Company specializing in manufacturing the products specified, with minimum three years experience.
- B. Applicator Qualifications: Company specializing in performing the type of work specified with minimum three years experience.

### **1.06 MOCK-UP**

- A. See Section 01 40 00 - Quality Requirements, for general requirements for mock-up.

- B. Apply benchmark samples of each paint system indicated and each color and finish selected to verify preliminary selections made under sample submittals and to demonstrate aesthetic effects and set quality standards for materials and execution.
- C. Apply benchmark samples after permanent lighting and other environmental services have been activated.
- D. Locate where directed by Architect.
- E. Final approval of color selections will be based on benchmark samples.
  - 1. If preliminary color selections are not approved, apply additional benchmark samples of additional colors selected by Schaefer at no added cost to Owner.
- F. Mock-up may remain as part of the work.

### **1.07 DELIVERY, STORAGE, AND HANDLING**

- A. Deliver products to site in sealed and labeled containers; inspect to verify acceptability.
- B. Container Label: Include manufacturer's name, type of paint, brand name, lot number, brand code, coverage, surface preparation, drying time, cleanup requirements, color designation, and instructions for mixing and reducing.
- C. Paint Materials: Store at minimum ambient temperature of 45 degrees F (7 degrees C) and a maximum of 90 degrees F (32 degrees C), in ventilated area, and as required by manufacturer's instructions.

### **1.08 FIELD CONDITIONS**

- A. Do not apply materials when surface and ambient temperatures are outside the temperature ranges required by the paint product manufacturer.
- B. Follow manufacturer's recommended procedures for producing best results, including testing of substrates, moisture in substrates, and humidity and temperature limitations.
- C. Do not apply materials when relative humidity exceeds 85 percent; at temperatures less than 5 degrees F (3 degrees C) above the dew point; or to damp or wet surfaces.
- D. Minimum Application Temperatures for Paints: 50 degrees F (10 degrees C) for interiors unless required otherwise by manufacturer's instructions.
- E. Provide lighting level of 80 ft candles (860 lx) measured mid-height at substrate surface.

## **PART 2 PRODUCTS**

### **2.01 MANUFACTURERS**

- A. Provide paints and finishes from the same manufacturer to the greatest extent possible, for interior/exterior paints.
  - 1. In the event that a single manufacturer cannot provide specified products, minor exceptions will be permitted provided approval by Schaefer is obtained using the specified procedures for substitutions.
- B. Paint "Series" are intended to specify type and quality of a paint line which includes white and tint bases. Contractor shall use proper base for color(s) selected including accent colors.
- C. Paints:
  - 1. Base Manufacturer: Sherwin-Williams Company: [www.sherwin-williams.com/#sle](http://www.sherwin-williams.com/#sle).
  - 2. Other acceptable manufacturers equal first line products may be submitted after bidding and shall be subject to Schaefer approval:
  - 3. PPG Paints: [www.ppgpaints.com/#sle](http://www.ppgpaints.com/#sle).
  - 4. Glidden Professional: [www.glidden.com](http://www.glidden.com).

5. Tnemec Inc.: [www.tnemec.com](http://www.tnemec.com).
  6. Benjamin Moore & Co.: [www.benjaminmoore.com](http://www.benjaminmoore.com).
  7. Coronado Paint: [www.coronadopaint.com](http://www.coronadopaint.com).
- D. Primer Sealers: Same manufacturer as top coats.
- E. Substitutions: See Section 01 60 00 - Product Requirements.

## **2.02 PAINTS AND FINISHES - GENERAL**

- A. Paints and Finishes: Ready mixed, unless intended to be a field-catalyzed paint.
1. Provide paints and finishes of a soft paste consistency, capable of being readily and uniformly dispersed to a homogeneous coating, with good flow and brushing properties, and capable of drying or curing free of streaks or sags.
  2. Provide materials that are compatible with one another and the substrates indicated under conditions of service and application, as demonstrated by manufacturer based on testing and field experience.
  3. For opaque finishes, tint each coat including primer coat and intermediate coats, one-half shade lighter than succeeding coat, with final finish coat as base color.
  4. Supply each paint material in quantity required to complete entire project's work from a single production run.
  5. Do not reduce, thin, or dilute paint or finishes or add materials unless such procedure is specifically described in manufacturer's product instructions.
- B. Volatile Organic Compound (VOC) Content:
1. Provide paints and finishes that comply with the most stringent requirements specified in the following:
    - a. 40 CFR 59, Subpart D--National Volatile Organic Compound Emission Standards for Architectural Coatings.
  2. Determination of VOC Content: Testing and calculation in accordance with 40 CFR 59, Subpart D (EPA Method 24), exclusive of colorants added to a tint base and water added at project site; or other method acceptable to authorities having jurisdiction.
- C. Colors: To be selected from manufacturer's full range of available colors.
1. Selection to be made by Schaefer after award of contract.

## **2.03 PAINT SYSTEMS - INTERIOR**

- A. Ferrous Metal (Eg-Shel)
1. Preparation: Remove rust, clean with denatured alcohol or simple green. No mineral spirits are to be used.
  2. Primer Coat: S-W Pro Industrial Pro-Cryl Universal Primer, B66W310 Series (5 mils wet, 2 mils dry).
  3. First Coat: S-W Pro Industrial Zero VOC Acrylic Eg-Shel, B66-660 Series
  4. Final Coat: S-W Pro Industrial Zero VOC Acrylic Eg-Shel, B66-660 Series (6 mils wet, 2.1 mils dry per coat).
  5. Touch up primer (material) is specified for use on metals specified Division 05 whether topcoat is required or not.
- B. Galvanized Metal and Aluminum (Eg-Shel)
1. Preparation: Wash with denatured alcohol or simple green. No mineral spirits are to be used.

2. Primer Coat: S-W Pro Industrial Pro-Cryl Universal Primer, B66W310 Series (5 mils wet, 2 mils dry).
  3. First Coat: S-W ProMar 200 Zero VOC Latex Eg-Shel, B20-2600 Series.
  4. Final Coat: S-W ProMar 200 Zero VOC Latex Eg-Shel, B20-2600 Series (4 mils wet, 1.7 mils dry per coat).
- C. Plaster or Drywall/Gypsum Board (Eg-Shel)
1. Preparation: Brush or wipe sand finish plaster surfaces to remove lightly bonded sand particles before painting.
  2. Primer Coat: S-W ProMar Zero VOC Latex Primer, B28W2600 (4 mils wet, 1 mils dry).
  3. First Coat: S-W ProMar 200 Zero VOC Latex Eg-Shel, B20-2600 Series.
  4. Final Coat: S-W ProMar 200 Zero VOC Latex Eg-Shel, B20-2600 Series (4 mils wet, 1.7 mils dry per coat).

## **2.04 ACCESSORY MATERIALS**

- A. Accessory Materials: Provide primers, sealers, cleaning agents, cleaning cloths, sanding materials, and clean-up materials as required for final completion of painted surfaces.
- B. Patching Material: Latex filler.
- C. Fastener Head Cover Material: Latex filler.

## **PART 3 EXECUTION**

### **3.01 EXAMINATION**

- A. Do not begin application of paints and finishes until substrates have been properly prepared.
- B. Loose dirt, foreign matter, brushed or scraped off, leaving surface clean and dry before painting.
- C. Verify that surfaces are ready to receive work as instructed by the product manufacturer.
- D. Examine surfaces scheduled to be finished prior to commencement of work. Report any condition that may potentially effect proper application.
- E. If substrate preparation is the responsibility of another installer, notify Schaefer of unsatisfactory preparation before proceeding.
- F. Test shop-applied primer for compatibility with subsequent cover materials.
- G. Measure moisture content of surfaces using an electronic moisture meter. Do not apply finishes unless moisture content of surfaces are below the following maximums:
  1. Gypsum Wallboard: 12 percent.
  2. Plaster and Stucco: 12 percent.
  3. Masonry, Concrete, and Concrete Masonry Units: 12 percent.
  4. Interior Wood: 15 percent, measured in accordance with ASTM D4442.
  5. Concrete Floors and Traffic Surfaces: 8 percent.

### **3.02 PREPARATION**

- A. Clean surfaces thoroughly and correct defects prior to application.
- B. Clean dust, dirt, and debris from rooms before interior painting.
- C. Prepare surfaces using the methods recommended by the manufacturer for achieving the best result for the substrate under the project conditions.
- D. Remove or repair existing paints or finishes that exhibit surface defects.
- E. Preparation of previously painted surfaces:



1. Loose surface materials - scrape and brush well. Sand surface feathering edges.
  2. Oily films, clean with thinner and/or as specified for mildew.
  3. Dull high gloss surfaces.
  4. Remove wax with commercial stripping product.
  5. Rust and corrosion - sand or brush to clean metal.
  6. Apply primer to repaired or bare areas and finish as specified in paint systems.  
Apply only finish coat on solid painted surfaces.
  7. Paint entire surface from interior corner to interior corner where remodeling work causes patching or revision in the painted surfaces.
- F. Remove or mask surface appurtenances, including electrical plates, hardware, light fixture trim, escutcheons, and fittings, prior to preparing surfaces or finishing.
- G. Seal surfaces that might cause bleed through or staining of topcoat.
- H. Remove mildew from impervious surfaces by scrubbing with solution of tetra-sodium phosphate and bleach. Rinse with clean water and allow surface to dry.
- I. Gypsum Board: Fill minor defects with filler compound. Spot prime defects after repair.
- J. Galvanized Surfaces:
1. Remove surface contamination and oils and wash with solvent according to SSPC-SP 1.
  2. Prepare surface according to SSPC-SP 2.
- K. Ferrous Metal:
1. Solvent clean according to SSPC-SP 1.
  2. Remove rust, loose mill scale, and other foreign substances using using methods recommended in writing by paint manufacturer and blast cleaning according to SSPC-SP 6 "Commercial Blast Cleaning". Protect from corrosion until coated.
- L. Metal Doors to be Painted: Prime metal door top and bottom edge surfaces.
1. Paint top and bottom of doors same as face and edges. Paint exterior doors same inside and out with exterior paint system.

### 3.03 APPLICATION

- A. Remove unfinished louvers, grilles, covers, and access panels on mechanical and electrical components and paint separately.
- B. Unless specified otherwise, apply paint with brush, spray, or roller as recommended by manufacturer to recommended thickness minimum. **Use a spray or roller application on hollow metal doors and door/window frames for a brushless finish.**
- C. Apply products in accordance with manufacturer's written instructions.
- D. Where adjacent sealant is to be painted, do not apply finish coats until sealant is applied.
- E. Do not apply finishes to surfaces that are not dry. Allow applied coats to dry before next coat is applied.
- F. Apply each coat to uniform appearance in thicknesses specified by manufacturer.
1. Apply paints to produce surface films without cloudiness, spotting, holidays, laps, brush marks, roller tracking, runs, sags, ropiness, or other surface imperfections.  
Cut in sharp lines and color breaks.
- G. Dark Colors and Deep Clear Colors: Regardless of number of coats specified, apply as many coats as necessary for complete hide.
- H. Sand wood and metal surfaces lightly between coats to achieve required finish.

- I. Vacuum clean surfaces of loose particles. Use tack cloth to remove dust and particles just prior to applying next coat.
- J. Wood to Receive Transparent Finishes: Tint fillers to match wood. Work fillers into the grain before set. Wipe excess from surface.
- K. Reinstall electrical cover plates, hardware, light fixture trim, escutcheons, and fittings removed prior to finishing.

### **3.04 CLEANING**

- A. Collect waste material that could constitute a fire hazard, place in closed metal containers, and remove daily from site.
- B. After completing paint application, clean spattered surfaces. Remove spattered paints by washing, scraping, or other methods. Do not scratch or damage adjacent finished surfaces

### **3.05 PROTECTION**

- A. Protect finishes until completion of project.
- B. Protect work of other trades against damage from paint application. Correct damage to work of other trades by cleaning, repairing, replacing, and refinishing, as approved by Schaefer, and leave in an undamaged condition.
- C. Touch-up damaged finishes after Substantial Completion.

### **END OF SECTION**