

Autodesk Docs/23179P - Sedgwick County Mental Health Hospital/23179_SCMHH_CDS_R24.rvt

SOUTH CENTRAL KS REGIONAL PSYCHIATRIC HOSPITAL SEDGWICK COUNTY WICHITA, KANSAS

VOLUME #2 of 3 - TENANT IMPROVEMENT

NOT FOR CONSTRUCTION

PULSE+
DESIGN GROUP
4622 Pennsylvania Ave., Suite 1100
Kansas City, MO 64112
pulse@designgroup.com
Ph: (816) 838-8005
Fax: (816) 838-2680

UNLESS A PROFESSIONAL SEAL WITH SIGNATURE AND DATE IS AFFIXED, THIS DOCUMENT IS PRELIMINARY AND IS NOT INTENDED FOR CONSTRUCTION, RECORDING PURPOSES OR IMPLEMENTATION.



SOUTH CENTRAL KS REGIONAL PSYCHIATRIC HOSPITAL
SEDGWICK COUNTY
INTRODUCTION DOCUMENTS: FOR REFERENCE ONLY
NOT FOR CONSTRUCTION
WICHITA, KANSAS

DATE: 10.10.2024
PROJECT #: 23179

CLIENT
SEDGWICK COUNTY
ADDRESS
100 N. BROADWAY, SUITE 610
WICHITA, KS 67202
(316) 660-7622

ARCHITECT OF RECORD
PULSE DESIGN GROUP
4622 PENNSYLVANIA AVE.
SUITE 1050
KANSAS CITY, MO 64112
(913) 438-9095

SHELL ARCHITECT
TESSERE
1525 E. DOUGLAS AVENUE
WICHITA, KS 67211
(316) 265-9367

STRUCTURAL CONSULTANT
BOB D. CAMPBELL
4338 BELLEVIEW AVENUE
KANSAS CITY, MO 64111
(816) 531-4144

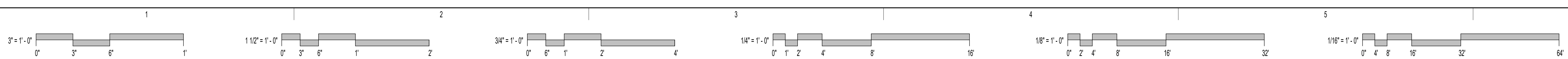
MEP CONSULTANT
PROFESSIONAL ENGINEERING CONSULTANTS
303 S TOPEKA ST
WICHITA, KS 67202
(316) 262-2691

CODE / FIRE PROTECTION
HENDERSON ENGINEERS
8345 LENEXA DRIVE
SUITE 300
LENEXA, KS 66214
(913) 742-5000

CIVIL CONSULTANT
TESSERE
1525 E. DOUGLAS AVENUE
WICHITA, KS 67211
(316) 265-9367

LANDSCAPE CONSULTANT
TESSERE
1525 E. DOUGLAS AVENUE
WICHITA, KS 67211
(316) 265-9367

FOOD SERVICE CONSULTANT
SANTEE/BECKER ASSOCIATES, LLC
6700 SQUIBB ROAD, SUITE 101
MISSION, KANSAS 66202
(913) 362-1800



Copyright © 2024, Pulse Design Group, Inc. All Rights Reserved. NOTE: If this drawing is less than 30" x 42", it is a reduced sized drawing. DO NOT SCALE DRAWINGS

2G10-000
COVER

10/3/2024 2:11:40 PM

VOLUME 1 of 3 SHEET INDEX - CORE/SHELL & SITE

VOLUME 2 of 3 SHEET INDEX - TENANT IMPROVEMENT

Table listing sheet numbers and titles for VOLUME 1, including categories like GENERAL, CIVIL, ARCHITECTURAL, MECHANICAL, ELECTRICAL, and PLUMBING.

Table listing sheet numbers and titles for VOLUME 1, including categories like GENERAL, ARCHITECTURE, LIFE SAFETY, INTERIORS, and ELECTRICAL.

Table listing sheet numbers and titles for VOLUME 2, including categories like MECHANICAL, ELECTRICAL, and PLUMBING.

NOT FOR CONSTRUCTION

DISCLAIMER

I, Basil D. Sherman II, AIA, Kansas Registered Architect # 5886, do hereby accept professional responsibility for attached Architectural Drawings.

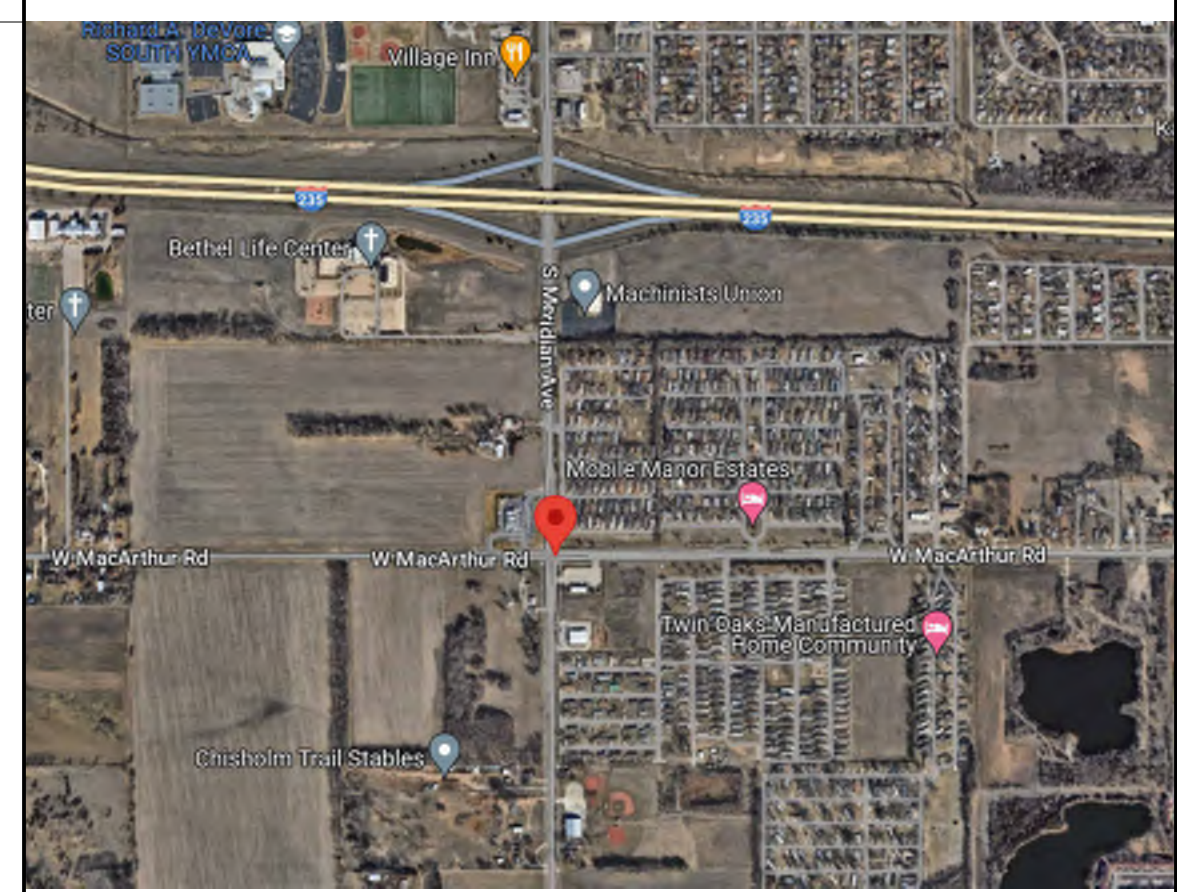
I hereby disclaim any responsibility for all other drawings included in these construction documents they being the responsibility of the other design professionals, whose seals and signed statements appear hereinafter.

Basil D. Sherman II, AIA

NOTE

THE 'G' SERIES SHEETS ARE PULSE DESIGN GROUP STANDARDS. ALL NOTES, DETAILS, SYMBOLS, ABBREVIATIONS, ETC. MAY NOT APPLY TO THIS PROJECT.

PROJECT LOCATION



SOUTH CENTRAL KS REGIONAL PSYCHIATRIC HOSPITAL
SEDGWICK COUNTY
INTRODUCTION DOCUMENTS: FOR REFERENCE ONLY
NOT FOR CONSTRUCTION

PULSE+ DESIGN GROUP
4627 Pennsylvania Ave., Suite 1000
Kansas City, MO 64112
pulse+designgroup.com

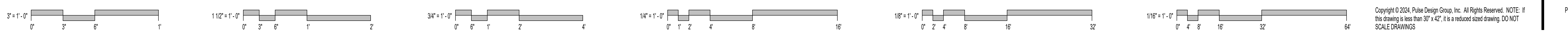


DATE: 10.10.2024
PROJECT #: 23179

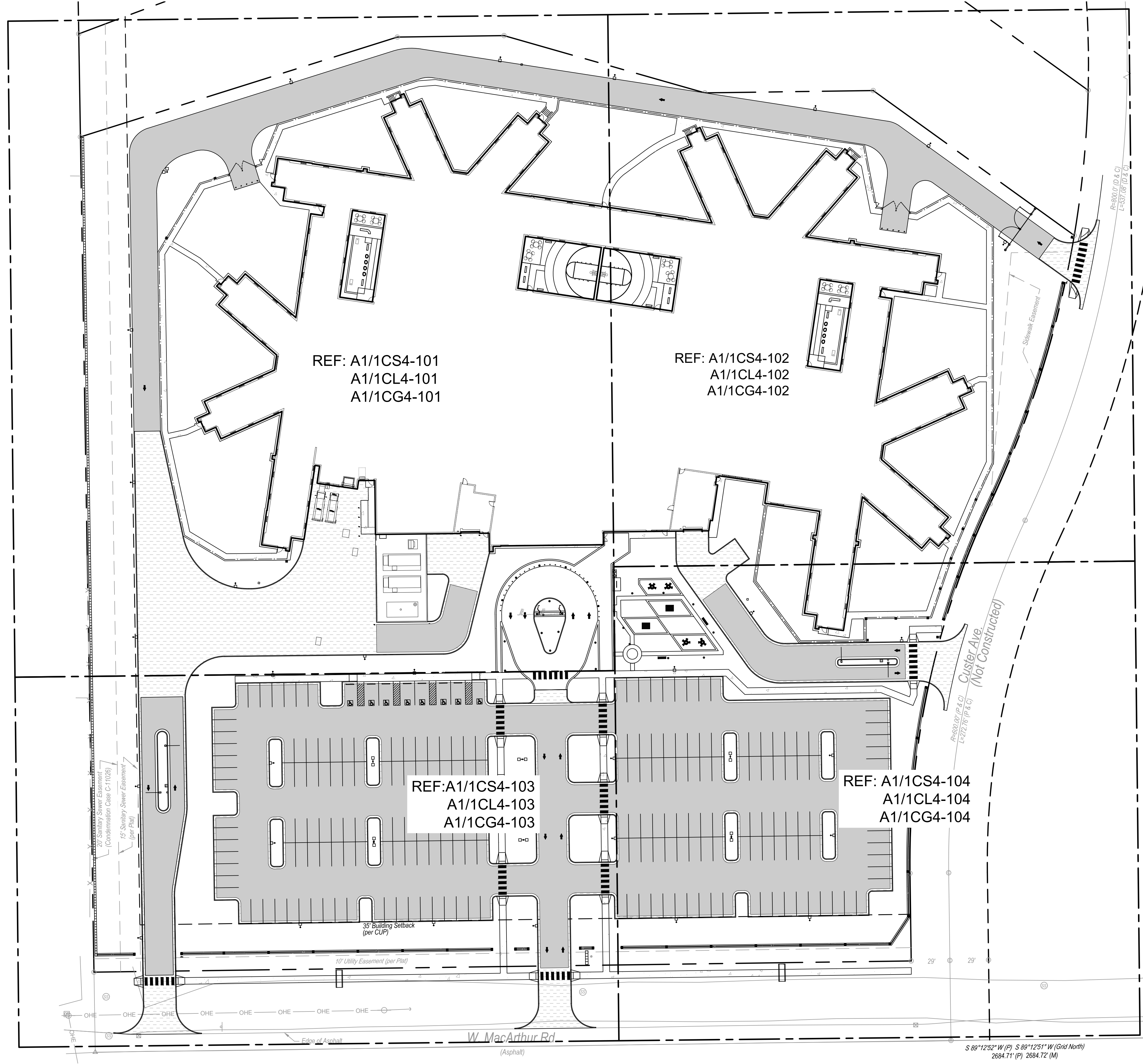
REVISION DATE

2G10-100
PROJECT DATA / SHEET INDEX

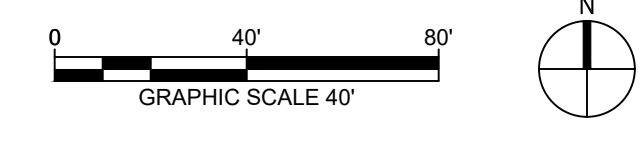
10/3/2024 5:01:17 PM



Copyright © 2024, Pulse Design Group, Inc. All Rights Reserved. NOTE: If this drawing is less than 30" x 42", it is a reduced size drawing. DO NOT SCALE DRAWINGS



A1 OVERALL CIVIL SHEET REFERENCE PLAN



NOT FOR CONSTRUCTION

SITE NOTES

- 1. REFERENCE 100-010 FOR GENERAL NOTES APPLICABLE TO THIS DRAWING.

LEGEND

	PROPERTY LINE
	SHEET EXTENTS
	BUILDING SETBACK

PULSE+ DESIGN GROUP
 4827 Pennsylvania Ave., Suite 1120
 Kansas City, MO 64112
 pulse+designgroup.com
 Ph: (816) 943-8005
 Fax: (816) 943-8000

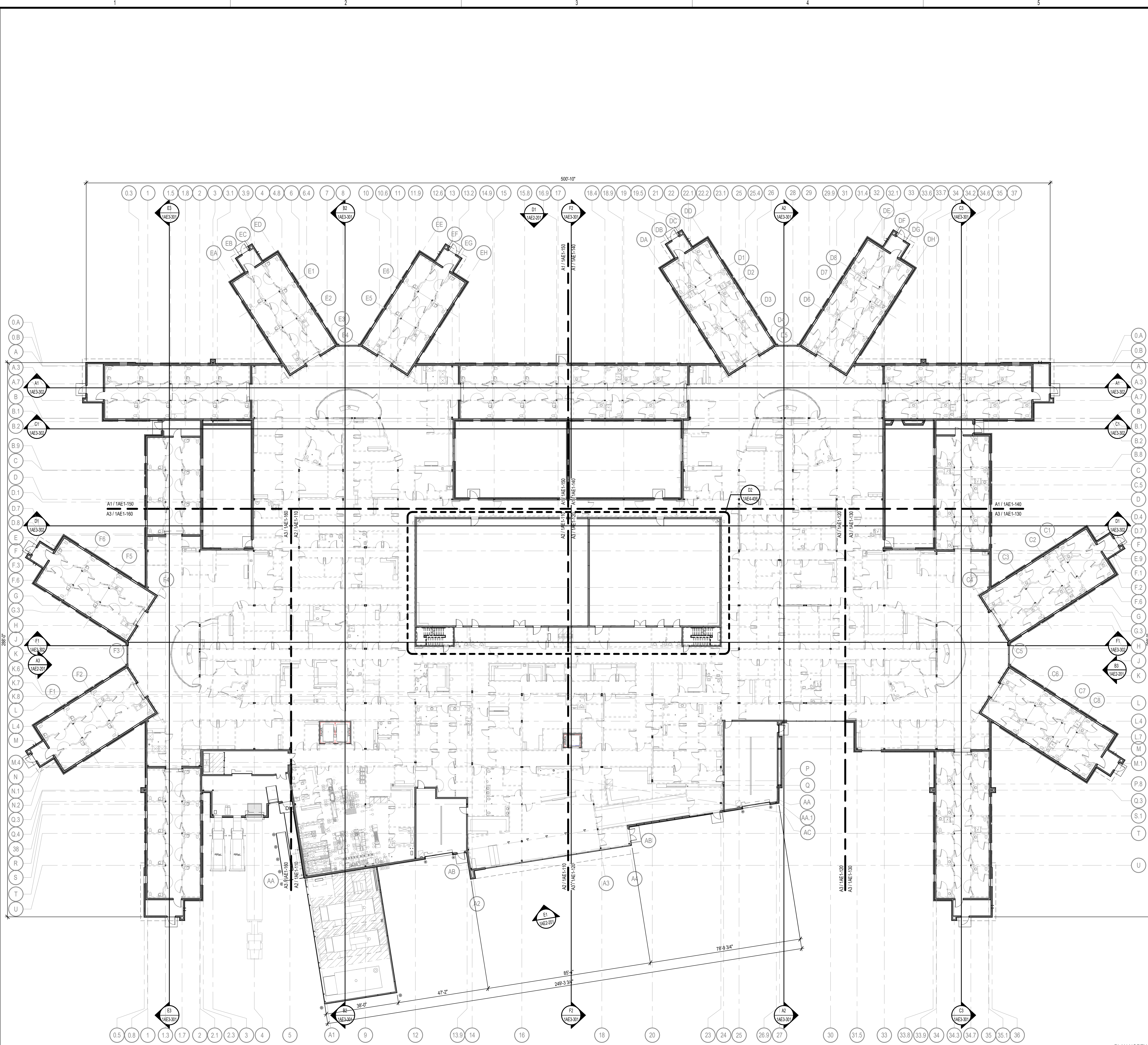
UNLESS A PROFESSIONAL SEAL WITH SIGNATURE AND DATE IS AFFIXED, THIS DOCUMENT IS PRELIMINARY AND IS NOT INTENDED FOR CONSTRUCTION, RECORDING PURPOSES OR IMPLEMENTATION.

TESSERE
 1525 E. Douglas
 Suite 100
 Wichita, KS 67202
 Phone: (316) 262-9987
 www.tessere.com
 © 2024 TESSERE
 TESSERE # 10170R24001

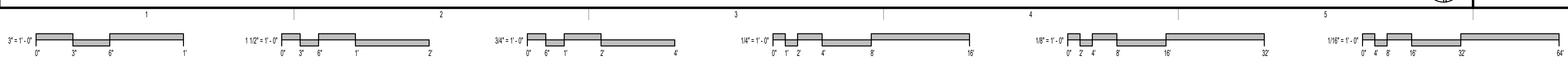


**SOUTH CENTRAL KS REGIONAL PSYCHIATRIC HOSPITAL
 SEDGWICK COUNTY
 INTRODUCTION DOCUMENTS: FOR REFERENCE ONLY
 NOT FOR CONSTRUCTION**
 WICHITA, KANSAS

DATE: 10.10.2024
 PROJECT #: 23179



A1 LEVEL 1 - FLOOR PLAN - OVERALL
 1" = 20'-0"



NOT FOR CONSTRUCTION

LINETYPE LEGEND

--- LIGHT DASHED LINE INDICATES ELEMENT TO BE INCLUDED IN THE VOLUME 2 ARCHITECTURAL DRAWINGS

GENERAL NOTES

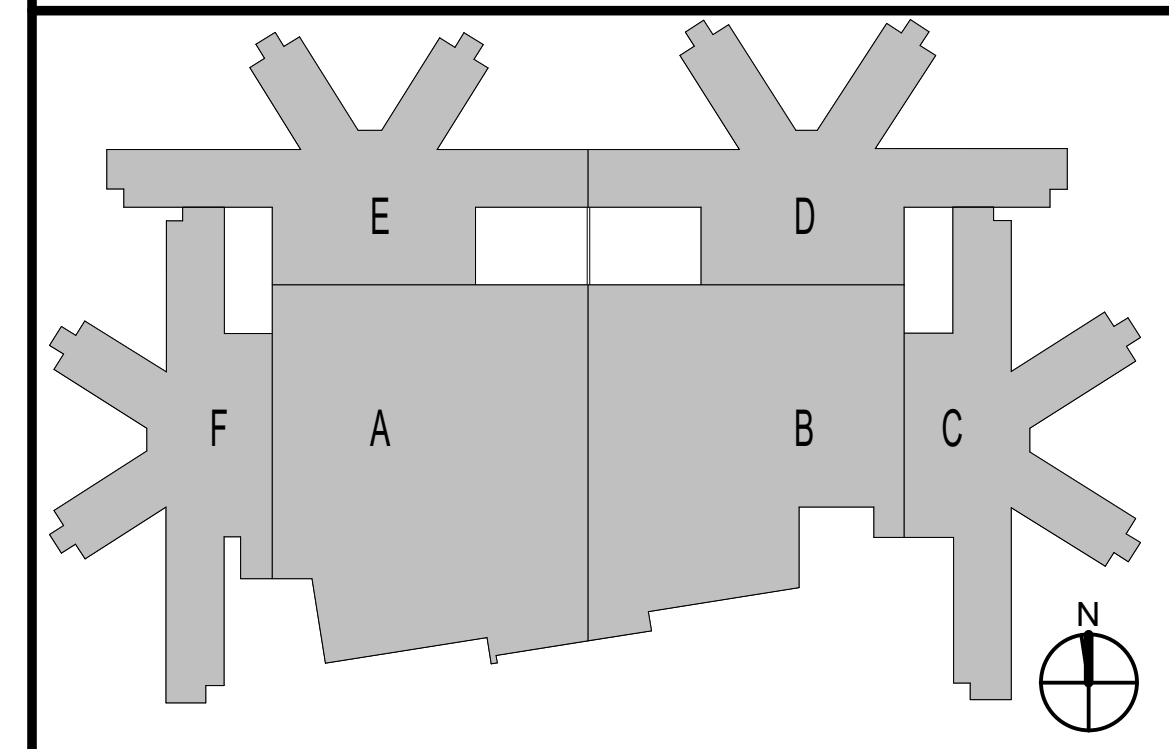
- A DIMENSIONS ARE TO FACE OF STUD UNLESS NOTED OTHERWISE. WHERE PARTITION TYPES CHANGE, FACE OF GYPSUM BOARD MUST ALIGN WITH ADJACENT FACE OF GYPSUM BOARD.
- B DIMENSIONS AT EXTERIOR WALLS ARE TO EXTERIOR FACE OF SHEATHING UNLESS NOTED OTHERWISE.
- C ALL DIMENSIONS ON REFLECTED CEILING PLANS ARE TO FINISHED FACES U.N.O.

UNLESS A PROFESSIONAL SEAL WITH SIGNATURE AND DATE IS AFFIXED, THIS DOCUMENT IS PRELIMINARY AND IS NOT INTENDED FOR CONSTRUCTION, RECORDING PURPOSES OR IMPLEMENTATION.

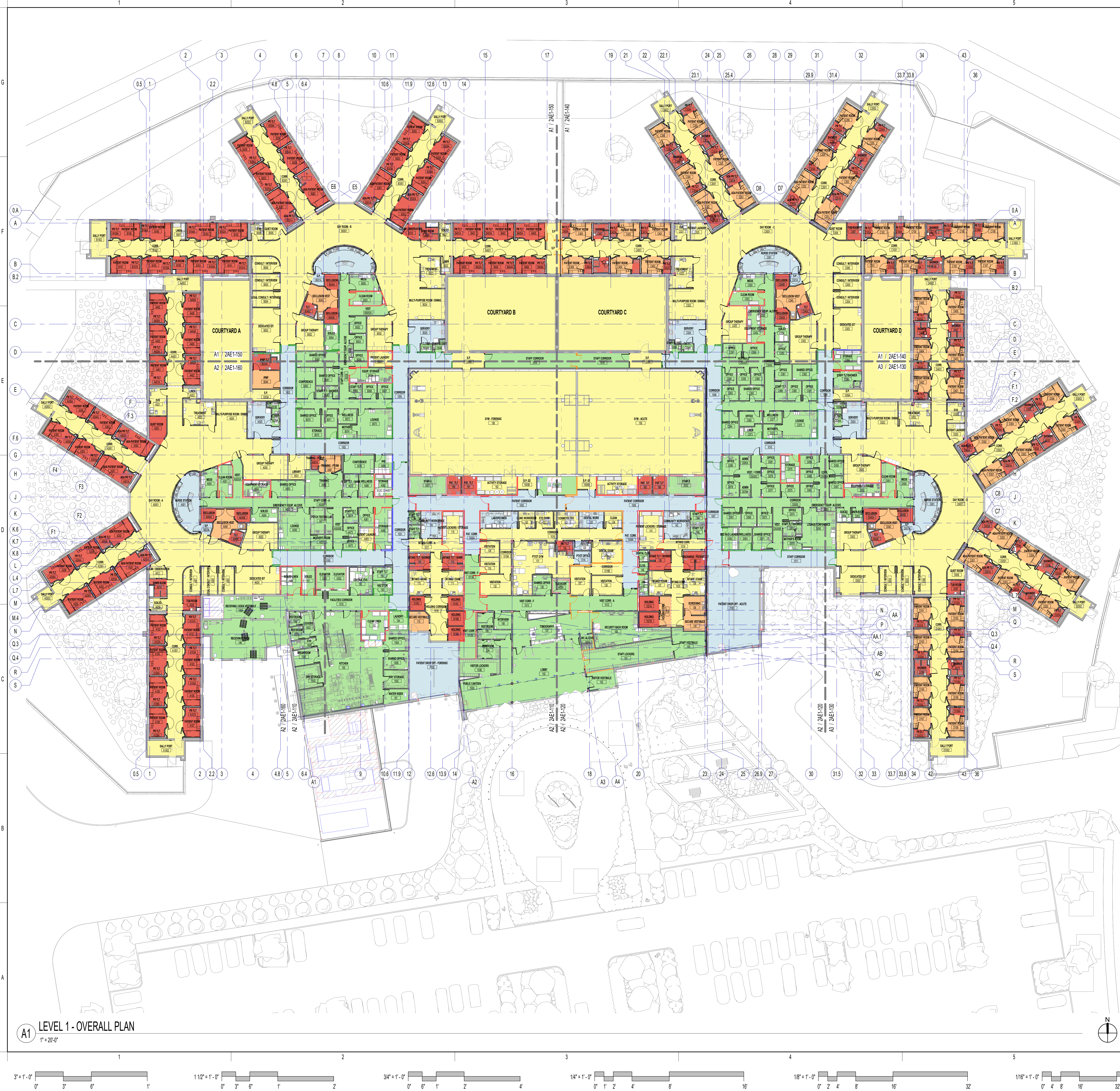


**SOUTH CENTRAL KS REGIONAL PSYCHIATRIC HOSPITAL
 SEDGWICK COUNTY
 INTRODUCTION DOCUMENTS: FOR REFERENCE ONLY
 NOT FOR CONSTRUCTION**
 WICHITA, KANSAS

KEY PLAN



DATE: 10.10.2024
 PROJECT #: 23179

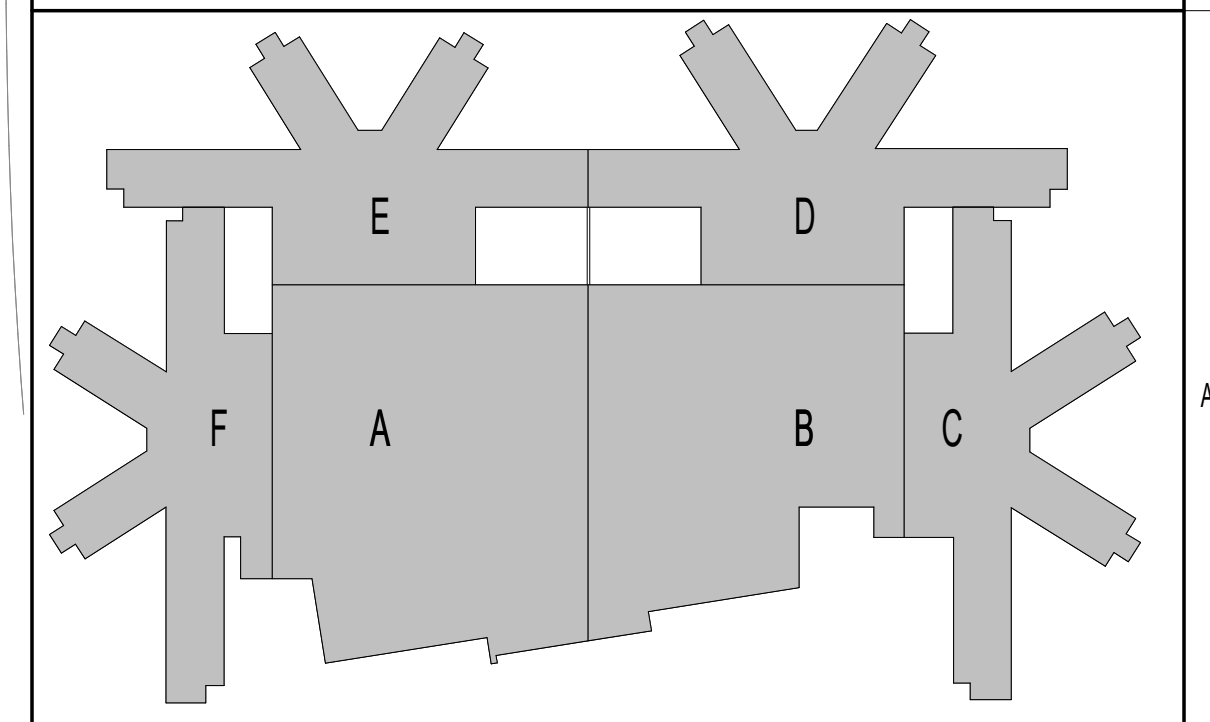


NOT FOR CONSTRUCTION

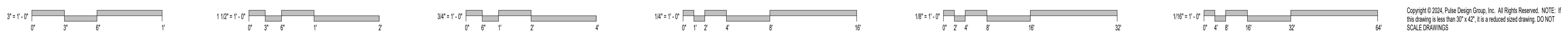
SECURITY LEVEL LEGEND

LEVEL	CEILING	OUTLETS/ACCESSORIES / CASEWORK / FIXTURES / ETC.	WALL CONSTRUCTION
LEVEL 1	2X2 DROP CEILING OR GYP, RE, RCP.	STANDARD HARDWARE.	3-5/8" 20-GAUGE METAL STUD AT 16" O.C. WITH GYP. BD. EA. SIDE. PAINT PER FINISH PLAN.
LEVEL 2	2X2 DROP CEILING OR GYP, RE, RCP.	STANDARD HARDWARE.	3-5/8" 20-GAUGE METAL STUD AT 16" O.C. WITH GYP. BD. .040" WALL PROTECTION (SMOOTH FRP) ON PATIENT SIDE(S) OF WALL UP TO 42". PAINT GYP. BD. PER FINISH PLAN.
LEVEL 3	2X2 CLIPPED DROP CEILING OR GYP, RE, RCP.	BEHAVIORAL HEALTH COMPLIANT, LIGATURE RESISTANT, TAMPER-RESISTANT, PICK-RESISTANT CAULK.	3-5/8" 20-GAUGE METAL STUD AT 16" O.C. WITH 5/8" VERY HIGH IMPACT GYP. BD. OVER 1/2" FIRE TREATED PLYWOOD ON PATIENT SIDE(S) OF WALL. PAINT GYP. BD. PER FINISH PLAN.
LEVEL 4	2X2 CLIPPED DROP CEILING OR GYP, RE, RCP.	BEHAVIORAL HEALTH COMPLIANT, LIGATURE RESISTANT, TAMPER-RESISTANT, PICK-RESISTANT CAULK.	3-5/8" 20-GAUGE METAL STUD AT 16" O.C. WITH 5/8" VERY HIGH IMPACT GYP. BD. OVER 1/2" FIRE TREATED PLYWOOD ON PATIENT SIDE(S) OF WALL. .040" WALL PROTECTION ON PATIENT SIDE(S) OF WALL UP TO 48" PAINT GYP. BD. PER FINISH SCHEDULE & FINISH PLAN.
LEVEL 5	5/8" GYP. BD. CEILING WITH TAMPER-PROOF ACCESS HATCHES AS REQUIRED. CEILINGS TO BE PAINTED WHITE.	BEHAVIORAL HEALTH COMPLIANT, LIGATURE RESISTANT, TAMPER-RESISTANT, PICK-RESISTANT CAULK.	3-5/8" 20-GAUGE METAL STUD AT 16" O.C. WITH 5/8" VERY HIGH IMPACT GYP. BD. OVER 1/2" FIRE TREATED PLYWOOD ON PATIENT SIDE(S) OF WALL. .060" WALL PROTECTION ON PATIENT SIDE(S) OF WALL UP TO 48". PAINT GYP. BD. PER FINISH PLAN.

KEY PLAN



A1 LEVEL 1 - OVERALL PLAN
1" = 20'-0"



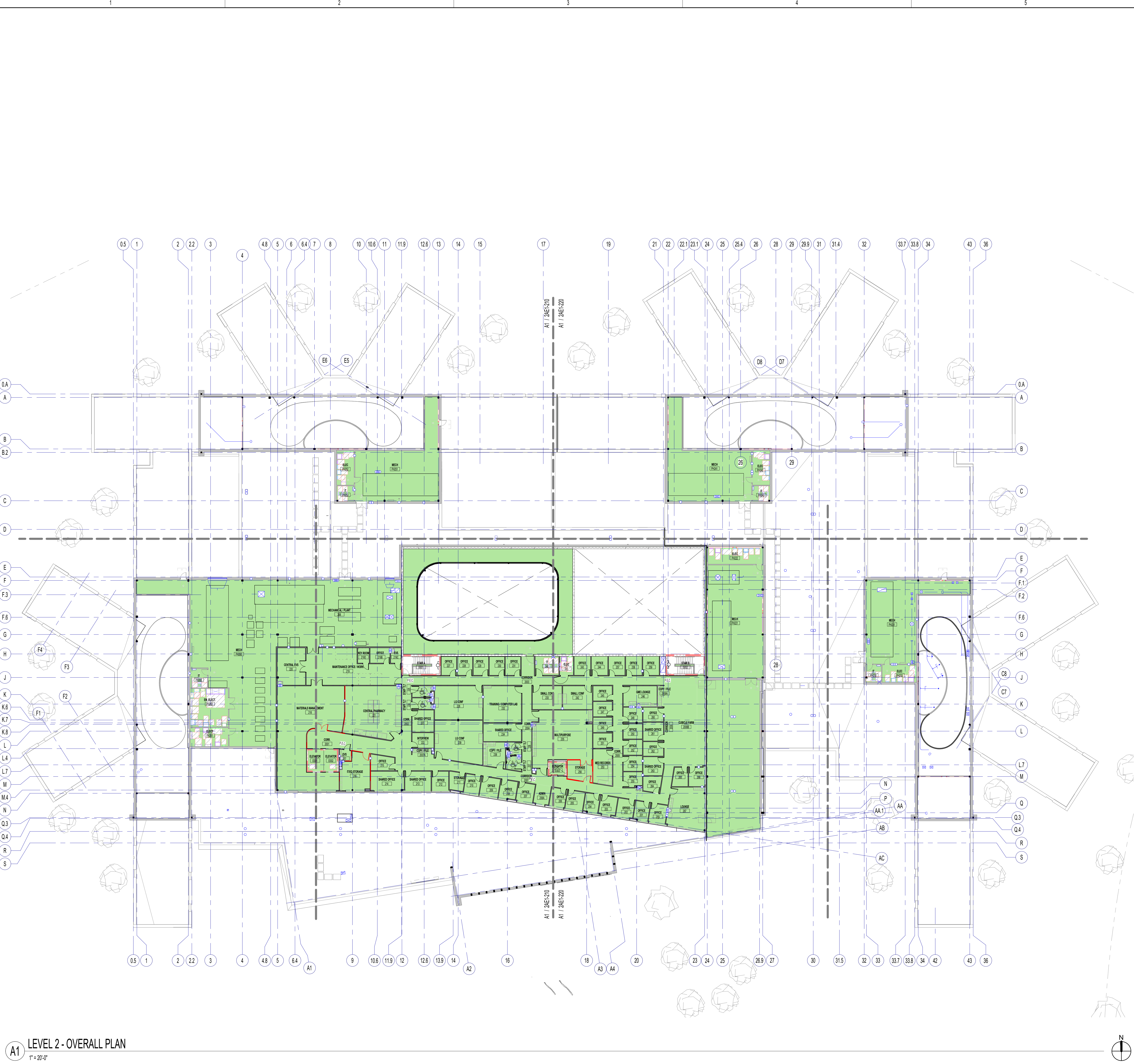
Copyright © 2024, Pulse Design Group, Inc. All Rights Reserved. NOTE: If this drawing is less than 30" x 42", it is a reduced size drawing. DO NOT SCALE DRAWINGS

UNLESS A PROFESSIONAL SEAL WITH SIGNATURE AND DATE IS AFFIXED, THIS DOCUMENT IS PRELIMINARY AND IS NOT INTENDED FOR CONSTRUCTION, RECORDING PURPOSES OR IMPLEMENTATION.

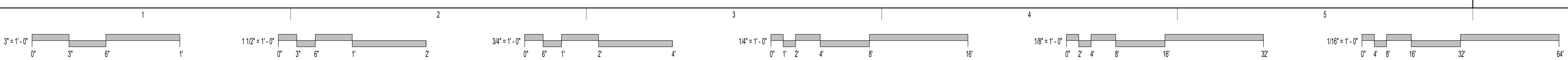


SOUTH CENTRAL KS REGIONAL PSYCHIATRIC HOSPITAL
SEDGWICK COUNTY
INTRODUCTION DOCUMENTS: FOR REFERENCE ONLY
NOT FOR CONSTRUCTION

DATE: 10.10.2024
PROJECT #: 23179

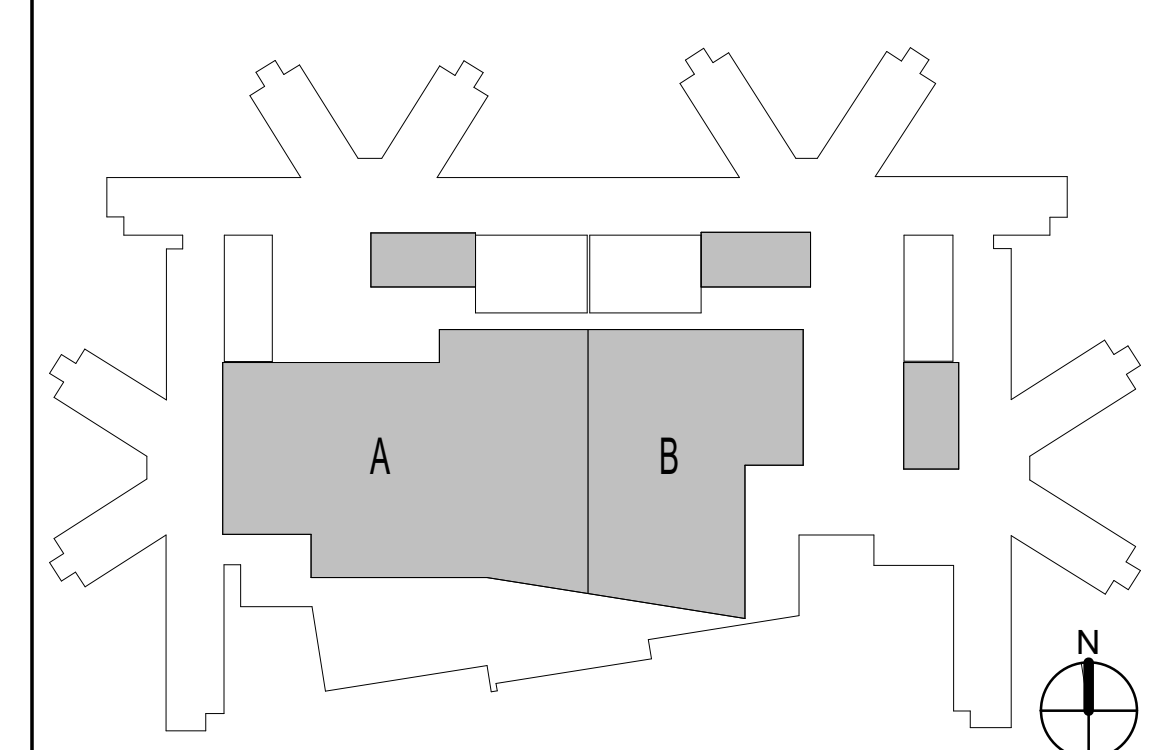


A1 LEVEL 2 - OVERALL PLAN
1" = 20'-0"



SECURITY LEVEL LEGEND

LEVEL	CEILING	OUTLETS/ ACCESSORIES / CASEWORK / FIXTURES / ETC.	WALL CONSTRUCTION
LEVEL 1	2X2 DROP CEILING OR GYP. RE. RCP.	STANDARD HARDWARE.	3-5/8" 20-GAUGE METAL STUD AT 16" O.C. WITH GYP. BD. EA. SIDE. PAINT PER FINISH PLAN.
LEVEL 2	2X2 DROP CEILING OR GYP. RE. RCP.	STANDARD HARDWARE.	3-5/8" 20-GAUGE METAL STUD AT 16" O.C. WITH GYP. BD. 040" WALL PROTECTION (SMOOTH FRP) ON PATIENT SIDE(S) OF WALL UP TO 42". PAINT GYP. BD. PER FINISH PLAN.
LEVEL 3	2X2 CLIPPED DROP CEILING OR GYP. RE. RCP.	BEHAVIORAL HEALTH COMPLIANT, LIGATURE RESISTANT, TAMPER-RESISTANT, PICK-RESISTANT CAULK.	3-5/8" 20-GAUGE METAL STUD AT 16" O.C. WITH 5/8" VERY HIGH IMPACT GYP. BD. OVER 1/2" FIRE TREATED PLYWOOD ON PATIENT SIDE(S) OF WALL. PAINT GYP. BD. PER FINISH PLAN.
LEVEL 4	2X2 CLIPPED DROP CEILING OR GYP. RE. RCP.	BEHAVIORAL HEALTH COMPLIANT, LIGATURE RESISTANT, TAMPER-RESISTANT, PICK-RESISTANT CAULK.	3-5/8" 20-GAUGE METAL STUD AT 16" O.C. WITH 5/8" VERY HIGH IMPACT GYP. BD. OVER 1/2" FIRE TREATED PLYWOOD ON PATIENT SIDE(S) OF WALL. 040" WALL PROTECTION ON PATIENT SIDE(S) OF WALL UP TO 48" PAINT GYP. BD. PER FINISH SCHEDULE & FINISH PLAN.
LEVEL 5	5/8" GYP. BD. CEILING WITH TAMPER-PROOF ACCESS HATCHES AS REQUIRED. CEILINGS TO BE PAINTED WHITE.	BEHAVIORAL HEALTH COMPLIANT, LIGATURE RESISTANT, TAMPER-RESISTANT, PICK-RESISTANT CAULK.	3-5/8" 20-GAUGE METAL STUD AT 16" O.C. WITH 5/8" VERY HIGH IMPACT GYP. BD. OVER 1/2" FIRE TREATED PLYWOOD ON PATIENT SIDE(S) OF WALL. 060" WALL PROTECTION ON PATIENT SIDE(S) OF WALL UP TO 48". PAINT GYP. BD. PER FINISH PLAN.



Copyright © 2024, Pulse Design Group, Inc. All Rights Reserved. NOTE: If this drawing is less than 30" x 42", it is a reduced size drawing. DO NOT SCALE DRAWINGS

SOUTH CENTRAL KANSAS REGIONAL PSYCHIATRIC HOSPITAL
 SEDGWICK COUNTY
 INTRODUCTION DOCUMENTS: FOR REFERENCE ONLY



UNLESS A PROFESSIONAL SEAL WITH SIGNATURE AND DATE IS AFFIXED, THIS DOCUMENT IS PRELIMINARY AND IS NOT INTENDED FOR CONSTRUCTION, RECORDING PURPOSES OR IMPLEMENTATION.

DATE: 10.10.2024
PROJECT #: 23179