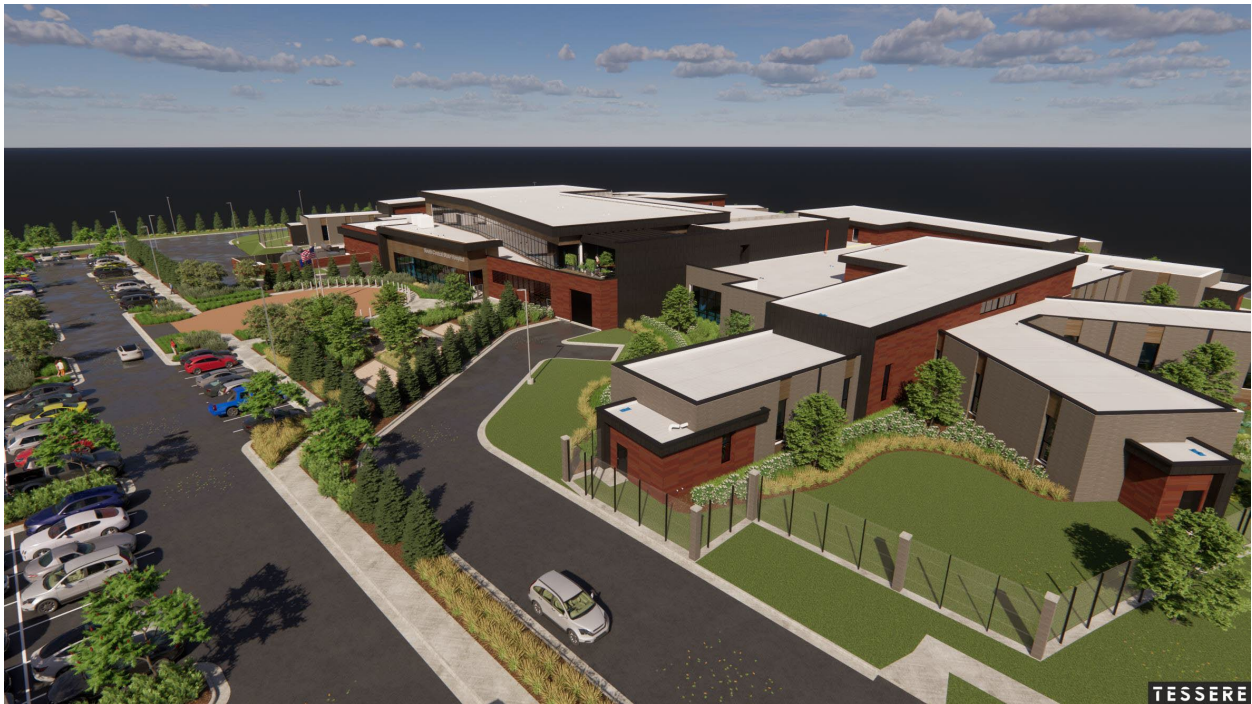


South Central Regional Psychiatric Hospital

- The State of Kansas and Sedgwick County are building a new adult mental health hospital.
- The hospital will have 104 beds for adults with acute mental illness.
- A mental health hospital in south-central Kansas will allow people to be served closer to home.
- This secure hospital will reduce long wait times for people charged with crimes needing competency treatment.
- This project will bring jobs to the region and expand efforts to train healthcare workers.

The State of Kansas and Sedgwick County are building a regional state mental health hospital to expand access to in-patient care for adults with mental illness. Sedgwick County will build the hospital. The State of Kansas will run the hospital. The hospital will be a secure facility for 104 adults.



This hospital will serve two types of patients. Half of the hospital will be designed to serve adults ordered for involuntary treatment under the state's Care and Treatment Act. These are adults screened by Community Mental Health Centers as being at risk of harming themselves or others and ordered by a court for treatment. The other half will serve criminal defendants ordered to have their competency to stand trial evaluated or to be restored to competency to complete their criminal process. With 52 beds for acute in-patient care, we expect to serve about 1,000 patients each year. With 52 beds for competency evaluation or treatment, we expect to serve about 200 people each year.

A regional mental health hospital fits the State's strategy to provide care to Kansans closer to home. The state hospitals in Larned and Osawatome are the only locations providing involuntary treatment for adults with mental illness. Twelve percent of those patients come from Sedgwick County. Sedgwick County has many defendants ordered to Larned State Hospital for competency treatment.

Due to the service demand, Sedgwick County is a good location for adding in-patient beds. There is more potential for hiring qualified people and training programs for healthcare workers.

In January 2022, 29 inmates in the Sedgwick County Jail waited an average of 130 days for treatment at Larned. The longest wait was 329 days.



Sedgwick County has acquired a building site at the corner of Macarthur and Meridian in South Wichita to construct the state hospital. The site will have access to Macarthur Road at three locations and have secured entry points for staff and visitors.

Funding for the project comes from federal and state sources. Sedgwick County received \$25 million in federal recovery funds for construction. The Kansas Department for Aging and Disability Services (KDADS) has

\$71.5 million of state funds to construct and operate the hospital. An agreement between KDADS and Sedgwick County outlines the project phases and how the funding can be used to buy property, design the facility, and construct the hospital.

The construction contract will be awarded by Sedgwick County in December 2024 and construction should begin early in 2025. KDADS plans to accept the building and begin moving into the hospital late in 2026.

The KDADS web page and Sedgwick County webpage have information about the project and the latest developments.

<https://kdads.ks.gov/state-hospitals-and-institutions>

<https://www.sedgwickcounty.org/finance/state-mental-health-hospital/>