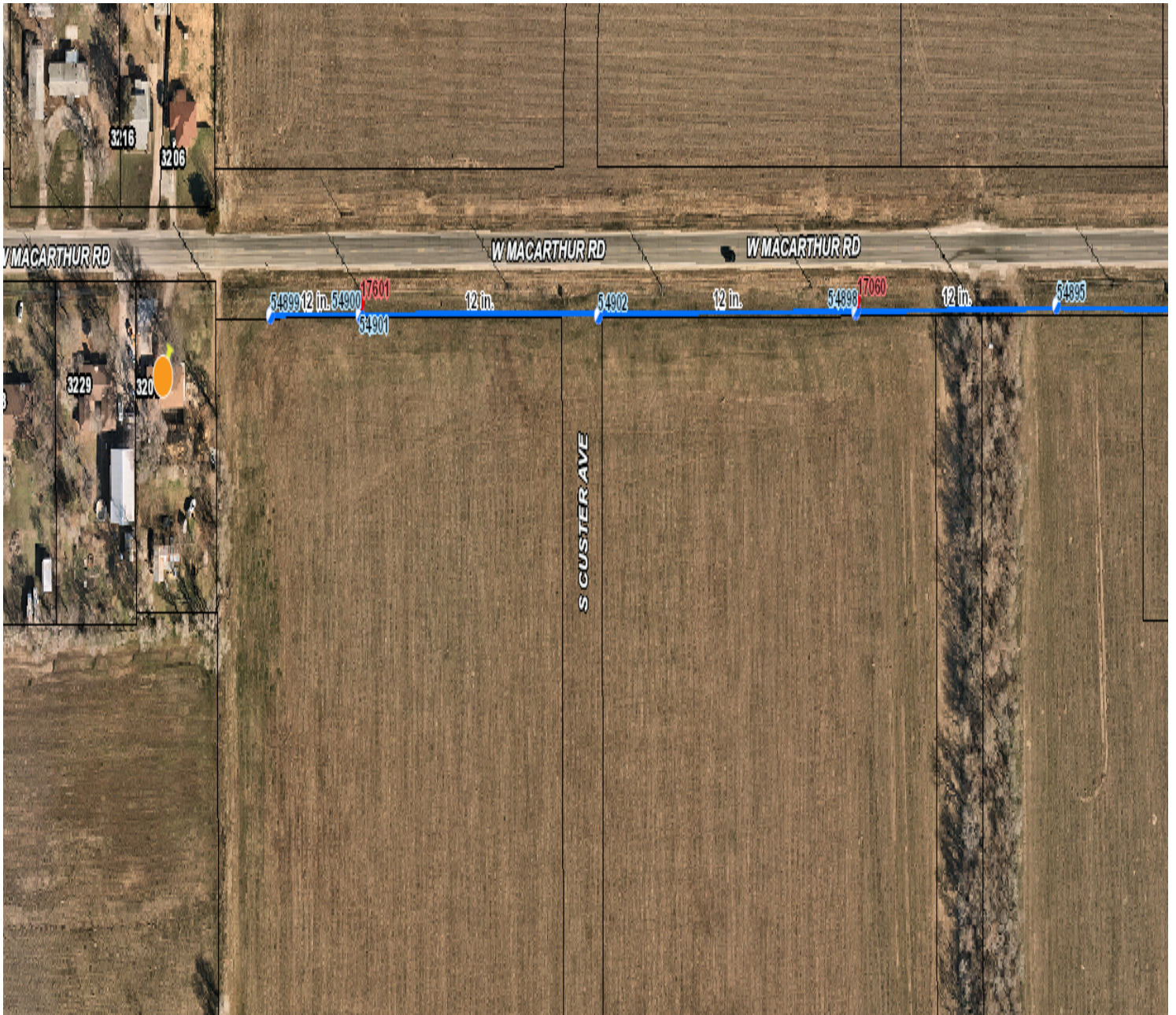


# Hydrant Flow Test Report

Water Map Page \_\_\_\_\_ Standard Map Page \_\_\_\_\_  
 Location \_\_\_\_\_ Date/Time \_\_\_\_\_  
 Test Made By \_\_\_\_\_ Witness \_\_\_\_\_  
 Purpose of Test \_\_\_\_\_

Flow Hydrant(s)	A1	A2	
Discharge Size	_____	_____	
Pitot Reading	_____	_____	GPM @ 20 PSI
GPM	_____	_____	_____

Static B                  psi      Residual B                  psi                  Hydrant A = \_\_\_\_\_  
 Hydrant B = \_\_\_\_\_





South Central KS Regional Psychiatric  
Hospital  
Furniture Basis of Design  
10/21/2024

# Table of Contents

---

Waiting Areas:	pages 03-05
Patient Areas:	pages 06-18
Staff Areas:	pages 19-34

# WAITING AREAS:

---

## **Waiting Chair, Single    C01**

---

OFS – Serony Lounge

Style: 472-1

Description: Lounge Chair

Frame: Stone Powder Coat

Upholstery: Single Upholstery

Allowance: \$70/yd

Arm Caps: Solid Surface, Modern White



## **Waiting, Canteen Stool, Single    C02**

---

OFS – Harpin Counter Height Bar Stool

Style: 85259-L

Description: Counter Height Bar Stool

Frame: Stone Powder Coat

Seat: Wood Veneer, Root Walnut

Arm Caps: N/A



## Waiting, Curved Seating C03

---

Krug – Zola Double Seat Modular Curve

Style: ZOL3 MCID60D1

Description: Modular Curved Seating

Frame: Silver Metallic

Upholstery: Multiple Upholstery

Allowance: \$70/yd

Arm Caps: N/A



## Bench C05

---

OFS – Rowen Bench

Style: 83140

Description: Interior Wood Slat Bench

Frame: Stone Powder Coat

Slat Finish: Oak Super Matte



## Table, Occasional T01

---

Stance - Resilia Round Drum Table w/ Plinth Base

Style: REDT30D16

Description: Round Table,  
30"W x 30"D x 16"H

Frame: Smooth Silver

Finish: Desert Sand Marmoleum

Corian Top: Glacier White



## Planter, Decorative P01a

---

Tournesol – Wilshire Rectangular Planter w/ Toe Kick

Style: WCR-602418

Irrigation/Reservoir: Include Saucer

Description: 24"W x 60"L x 18"H Planter

Finish: Puddle FRP

(Snake Plants to be provided)



## Planter, Decorative P01b

---

Tournesol – Wilshire Rectangular Planter w/ Toe Kick

Style: WCR-602418

Irrigation/Reservoir: Include Saucer

Description: 24"W x 48"L x 18"H Planter

Finish: Puddle FRP

(Snake Plants to be provided)



## PATIENT AREAS:

---

### **BH Patient Chair, Single C07**

---

Cortech Razorback Stacking Chair

Style: 86484

Description: Stacking BH Chair

Finish: Fog Gray

Arm Caps: N/A

\*Provide Product for Client to Demo/Test



### **BH Patient Chair, Single C08**

---

Norix Vesta Guest Armless Chair

Style: VA610

Description: Armless BH Chair

Finish: 50/50 mix of Dove and Sand

Weighted: Price for up to 125lbs

Arm Caps: N/A

\*Provide Product for Client to Demo/Test



## **BH Patient Chair, Single C08 (Alternate)**

---

Cortech - Sentinel Armless Chair

Style: VA610

Description: Armless BH Chair

Finish: 50/50 mix of Dove and Sand

Weighted: Price for up to 125lbs

Arm Caps: N/A



\*Provide Product for Client to Demo/Test

## **BH Patient Dining Chair, Single C09a**

---

Pineapple - Ryno Dining Chair

Style: 1RYD-00

Description:

Finish: Dusty Blue

Weighted: Price for up to 125lbs

Arm Caps: N/A



\*Provide Product for Client to Demo/Test



## **BH Patient Dining Chair, Single C09a (Alternate)**

---

Stance - Flo Dining Chair

Style: FLC121A

Description:

Finish: Dusty Blue

Weighted: Price for up to 125lbs

Arm Caps: N/A

\*Provide Product for Client to Demo/Test



## **BH Patient Dining Chair, Single C09b**

---

Pineapple - Ryno Dining Chair

Style: 1RYD-00

Description:

Finish: Cool Green

Weighted: Price for up to 125lbs

Arm Caps: N/A



## **BH Patient Dining Chair, Single C09b (Alternate)**

---

Stance - Flo Dining Chair Style: 1RYD-00

Description: FLC121A

Finish: Sage Green

Weighted: Price for up to 125lbs

Arm Caps: N/A

\*Provide Product for Client to Demo/Test



## **BH Patient Rocking Chair C10a**

---

Norix - RockSmart Rocker

Style: RA18

Description: BH Rocking Chair

Finish: Twilight

Weighted: No

Arm Caps: N/A

\*Provide Product for Client to Demo/Test



## **BH Patient Rocking Chair C10b**

---

Norix - RockSmart Rocker

Style: RA18

Description: BH Rocking Chair

Finish: Sage

Weighted: No

Arm Caps: N/A



## **BH Patient Chair, Single C11**

---

Cortech - Sentinel Armless Chair w/ Access Door

Style: 116484SGS

Description: BH Armless Chair

Finish: Stone Gray

Weighted: Price for up to 125lbs

Arm Caps: N/A



## **BH Patient Chair, Single      C11 (Alternates)**

---

Stance – Frontier Armless Chair

Style: FRC121A

Description: BH Armless Chair

Finish: Chateau Grey

Weighted: Price for up to 125lbs

Arm Caps: N/A



\*Provide Product for Client to Demo/Test

Pineapple – Ryno Lounge Chair

Style: 1RYL-00

Description: BH Armless Chair

Finish: Moonwalk Gray

Weighted: Price for up to 125lbs

Arm Caps: N/A



\*Provide Product for Client to Demo/Test

## **BH Patient Stool                    C12**

---

Norix - Hondo Nuevo

Style: HN840.HN850

Description: 18.5”H x 18”D BH Stool, 23lbs

Finish: Dove

Weighted: Price for up to 125lbs

Arm Caps: N/A



\*Provide Product for Client to Demo/Test

## **BH Patient Stool                    C12 (Alternate)**

---

Cortech – Endurance Stool

Style: 7901SG

Description: 15.5”H x 16.5W x 16.5”D BH Stool

Finish: Stone Gray

Weighted: Price for up to 125lbs

Arm Caps: N/A



\*Provide Product for Client to Demo/Test

## **BH Patient Chair, Single C14**

---

Norix - Vesta Lounge Armless

Style: VA610

Description: Armless BH Chair

Finish: Dove

Weighted: Price for up to 125lbs

Arm Caps: N/A



## **BH Patient Chair, Single C15**

---

Norix - Coupe Lounge Chair

Style: CP10

Description: BH Tub Chair

Finish: Sand

Weighted: Price for up to 125lbs

Arm Caps: N/A



\*Provide Product for Client to Demo/Test

## **BH Patient Chair, Single C15 (Alternates)**

---

Stance - Flo Lounge Chair

Style: FLL124

Description: BH Tub Chair

Finish: Chateau Grey

Weighted: Price for up to 125lbs

Arm Caps: N/A



\*Provide Product for Client to Demo/Test

Pineapple – Ryno Tub Chair

Style: 1RYU-00

Description: BH Tub Chair

Finish: Moonwalk

Weighted: Price for up to 125lbs

Arm Caps: N/A



\*Provide Product for Client to Demo/Test

## **Table, BH 4-Leg Rectangular T08**

---

Norix – Leg Style 4-Leg Rectangular Table

Style: LS3072

Description: BH Table

Frame: 2.5" Metallic Silver

Finish: Palisades Oak



\*Provide Product for Client to Demo/Test

## Table, BH Activity T09a

---

Stance HC – Flo Dining Table

Style: FLTR48-U

Description: Weighted BH Table

Finish: Sand

Base: Chateau Gray

Edge: Chateau Gray

Weighted: Price for up to 125lbs



\*Provide Product for Client to Demo/Test

## Table, BH Activity T09a (Alternate)

---

Norix – Forte Cafe Table

Style:

Description: Weighted BH Table

Finish: Palisades Oak

Base: Dove

Edge: Dove

Weighted: Price for up to 125lbs



\*Provide Product for Client to Demo/Test



## Table, BH Occasional T09b

---

Stance HC – Flo Round Table

Style: FLTR42-U

Description: Weighted BH Table

Finish: Sand

Base: Chateau Gray

Edge: Chateau Gray

Weighted: Price for up to 125lbs



## Table, BH Activity T09b (Alternate)

---

Norix – Forte Cafe Table

Style:

Description: Weighted BH Table

Finish: Palisades Oak

Base: Dove

Edge: Dove

Weighted: Price for up to 125lbs



## Table, Occasional T10a

---

Stance - Resilia Round Drum Table (No Plinth Base)

Style: REDT36D16X

Description: Round Table,  
36"W x 36"D x 16"H

Finish: Desert Sand Marmoleum

Corian Top: Glacier White



\*Provide Product for Client to Demo/Test

## Table, Occasional T10b

---

Stance - Resilia Round Drum Table (no plinth)

Style: REDT20D16X

Description: Round Table,  
20"W x 20"D x 16"H

Finish: Desert Sand Marmoleum

Corian Top: Glacier White



## Table, BH Occasional T11

---

Pineapple - Ryno Coffee Table  
Style: 1RYF-00  
Description: BH Coffee Table  
Finish: Moonwalk Gray  
Weighted: Price for up to 125lbs



\*Provide Product for Client to Demo/Test

## Table, Conference T12

---

AIS – Conference Tables w/ Power  
Style: X-CTR48102R  
Description: Conference Table,  
30”H x 48”D x 120”L  
Finish: Summer Drops  
Base: Summer Drops  
Edge: Summer Drops



# STAFF AREA

---

## Task Stool C04

---

OFS – Genus Light Task Chair, Stool

- Adjustable Height
- Armless, Standard
- Counter Height

Style: 3815-FGR-X9-W48-CHC-TT-PNM-PLST

Casters: Yes, Price for Soft Casters

Frame: Standard Black, Graphite

Seat Finish: Platinum Poly

Seat Upholstery: N/A



\*\*Product would not include arms pictured here

## Staff Dining Chair C06

---

Global – Popcorn Stacking Chair

- Armless

Style: 6711

Casters: No

Frame: Chrome

Seat Finish: Cloud Poly



## High Back Lounge Chair (Rocker) C13

---

OFS – Mention Rocker & Ottoman

- High Back Lounge
- Rocker Base Chair
- Rocker Base Ottoman

Style: F81146-C8Z & F81091-C8Z

Description: Lounge Rocker & Ottoman

Frame: Root

Upholstery: Single Upholstery

Allowance: \$70/yd

Arm Caps: N/A



\*Provide Product for Client to Demo/Test

## Task Chair C16

---

OFS – Genus Task Chair w/ Arms

- Adjustable Arms
- Seat Slider
- Lumbar Support

Style: 3607M

Casters: Yes, Price Soft Wheel Casters

Frame: Black

Upholstery: Mesh Back, Single Upholstery Seat

Allowance: \$70/yd

Arm Caps: N/A



## Task Chair, Armless C17

---

OFS – Genus Task Chair, Armless

- Seat Slider
- Lumbar Support

Style: 3607M

Casters: Yes, Price Soft Wheel Casters

Frame: Black

Upholstery: Mesh Back, Single Upholstery Seat

Allowance: \$70/yd

Arm Caps: N/A



## Training Chair C18

---

OFS – Flexxy Multi Use Chair

- Arms
- Upholstered Seat
- Stack/Nest

Style: 160372-B6K

Casters: Yes,  
Price Soft Wheel Casters

Frame: Designer White

Seat Finish: Gray Tone



\*\*\*Nesting Capabilities – Include Chair Dolly (Separate [C18a](#)) in Pricing

## Training Chair C18 (Alternates)

---

### AIS – Stow Multi Use Chair

- Arms
- Upholstered Seat
- Stack/Nest

Style:

Casters: Yes,

Price Soft Wheel Casters

Frame: Designer White

Seat Finish: Gray Tone



\*\*Product would not include side table pictured here

\*\*\*Nesting Capabilities – Include Chair Dolly (Separate C18a) in Pricing

---

### AMQ – Tizu Multi Use Chair

- Arms
- Upholstered Seat
- Stack/Nest

Style: TIZUNEST

Casters: Yes,

Price Soft Wheel Casters

Frame: Designer White

Seat Finish: Gray Tone



\*\*\*Nesting Capabilities – Include Chair Dolly (Separate C18a) in Pricing

KL – LimeLite Nesting Chair

- Arms
- Upholstered Seat
- Stack/Nest

Style: LL2111

Casters: Yes,

Price Soft Wheel Casters

Frame: Designer White

Seat Finish: Gray Tone



\*\*\*Nesting Capabilities – Include Chair Dolly (Separate C18a) in Pricing

## Configuration Table

T02

Kimball – Configuration Tables

Style: CCST3060RT

Description: 30”x 60” **Mobile** Table

Finish: Chai Woodgrain (CI)

Base: Platinum Metallic (501)

Edge: Chai Woodgrain (CI)

Foot: Glides





## Conference Table T03a

---

AIS – Conference Tables w/ Power

Style: X-CTR48102R

Description: 30”H x 48”D x 102”L Table

Finish: Summer Drops

Base: Storm

Edge: Summer Drops



## Conference Table T03b

---

AIS – Conference Tables w/ Power

Style: X-CTR4272R

Description: 30”H x 42”D x 72”L Table

Finish: Summer Drops

Base: Storm

Edge: Summer Drops



## **Table, Conference T04**

---

AIS – Conference Tables w/ Power

Style: X-CTR48102R

Description: Conference Table,  
30”H x 48”D x 120”L

Finish: Summer Drops

Base: Summer Drops

Edge: Summer Drops



## **Conference Table, U-Style T05**

---

AIS – (4) Day-To-Day Flip Tables Ganged in U-Shape

\*Note: See T06a for Table Size, Style, and Finish

## Training Table T06a

---

AIS – Day-To-Day Flip/Nest Table

Style: T-RCR247229FLCP

Description: Nesting, Flip-Top Table,  
30”H x 24”D x 72”L

Finish: Chalk

Base: Metallic Silver

Edge: Chalk

Accessory: Modesty Panel



## Training Table T06b

---

AIS – Day-To-Day Flip/Nest Table

Style: T-RCR244829FLCP

Description: Nesting, Flip-Top Table,  
30”H x 24”D x 48”L

Finish: Chalk

Base: Metallic Silver

Edge: Chalk

Accessory: Modesty Panel



## Training Table T06c

---

AIS – Day-To-Day Flip/Nest Table

Style: T-RCR306029FLCP

Description: Nesting, Flip-Top Table,  
30”H x 30”D x 60”L

Finish: Chalk

Base: Metallic Silver

Edge: Chalk

Accessory: Modesty Panel



## Round Table T07

---

OFS – Modern Amenity Round Table

Style: 310-22RD

Description: Side Table

Finish: Crystal Ice

Base: Root

Edge: N/A



## \*Office Furniture – Knoll Dividends Horizon

---

### Options:

- Finish: Light Ash Doors & Studio White Bases on Cabinets and Peds; Studio White Worksurfaces for Height Adjustable Desks w/ Modesty Panels for Shared Offices & Cubicles
- Upper storage above return W/ Integrated Dividend Horizon Tack Panels
  - Integrated Under Cabinet Lighting
- (1) mobile Box/Box/File (include pencil tray)
- (1) stationary File/File Cabinet
- Pulls: Curved, Black
- ~~2 grommets, black half round grommets preferred.~~
- Power connection at work surface
- Provide cable management under and behind work surface for cable access
- Locks on all cabinets (keyed alike)
- ~~Task light~~



## Height Adjustable Desk      D01a

---

Herman Miller/Knoll - LEV Height Adjustable Desk

Worksurface Style: LVTRR7029N

Base Style: LVBCEN30GS

Description: Sit Stand Desk,  
70"W x 30"D

Finish: Light Ash

Base: Studio White

Edge: Match Top



## Height Adjustable Desk      D01b

---

Herman Miller/Knoll - LEV Height Adjustable Desk

Worksurface Style: LVTRR6429N

Base Style: LVBCEN30GS

Description: Sit Stand Desk,  
64"W x 30"D

Finish: Light Ash

Base: Studio White

Edge: Match Top



## Height Adjustable Desk      D01c

---

Herman Miller/Knoll - LEV Height Adjustable Desk

Worksurface Style: LVTRR5229N

Base Style: LVBCEN30GS

Description: Sit Stand Desk,  
52"W x 30"D

Finish: Light Ash

Base: Studio White

Edge: Match Top



## Height Adjustable Desk      D01d

---

Herman Miller/Knoll - LEV Height Adjustable Desk

Worksurface Style: LVTRR4629N

Base Style: LVBCEN30GS

Description: Sit Stand Desk,  
46"W x 30"D

Finish: Light Ash

Base: Studio White

Edge: Match Top



## Desk Height Storage Credenza D02

---

**Knoll** - Anchor Freestanding Doublewide Pedestals w/ Shared Pedestal Top  
Style: Open w/ Shelf (WP2830OSL), File/File (WP2836FFL(N)), Shared Top (WPT6620L)

Description: B-Desk & Storage,  
66"W x 20"D x 28"H

Finish: Light Ash

Base: Studio White

Edge: Match Top



## Wall Mounted Overhead Storage F01a

---

**Knoll** - Anchor Wall Mounted

Style: Sliding Door w/ Tack Board & UC Lights

Description: Overhead Storage System,  
48"W x 14"D

Finish: Light Ash

Base: Studio White

Edge: Match Top





## Wall Mounted Overhead Storage F01b

---

### Knoll - Anchor Wall Mounted

Style: Sliding Door w/ Tack Board & UC Lights

Description: Overhead Storage System,  
72"W x 14"D

Finish: Light Ash

Base: Studio White

Edge: Match Top



## Wardrobe Storage F02

---

### Knoll Dividends Horizon - Wardrobe w/ Open Unit

Style: X5W6-1936

Description: Wardrobe Style Vertical Storage,  
36"W x 19"D x 69"H

Finish: Patterned Linen Crisp H-P3



## Box/File Mobile Pedestal

**F03**

---

### Knoll - Anchor Mobile Pedestal Box/File

Style: WPM2416BFL(N)

Description: Mobile Pedestal Box/File,  
**14"W x 23"H x 20"D**, Recessed Pull, Locking

Finish: Light Ash

Base: Studio White, Dark Gray Pulls

Edge: Match Top



## Lateral File

**F04**

---

### Knoll – Series 2 Generation 2024 Lateral File

Style: 2DSF55142CCCCL

Description: **5-Drawer High Lateral File**  
**41"W x 19"D x 51"H**

Finish: Light Ash

Base: Studio White, Recessed Pulls

Edge: Match Top



## Lectern L01

---

OFS – Layer Teacher Station

Style: ED1-6628TDR

Description: Lectern,  
66"W x 28"D x 43.75"H

Surface(s) Finish: Frosty White

Base: Luster Grey

Chassis: Timber



## Cubicle System CUB01

---

### Knoll Dividends Horizon

\*See Specific Items for Finishes

System Assembly Contains:

**D01b** – Sit Stand Desk

D02 – Worksurface/ Storage

F01a – Overhead Storage Unit & Tack Surface

**Panels running through center of Cubicle System to be powered to accommodate 2 data drops and (6) outlets (3 duplex).**

\*Provide Systems Structure for Cubicle Style Install



Type	Manufacturer	Name	Style	Category	Upholstery Allowance, If Applicable	Seat & Back Finish / Arm Cap Finish / Top Finish	Frame Finish / Base Finish	Notes	Lead Time	Quantity	Cost	Total Cost
C01	OFS	Serony Lounge Chair	472-1	Waiting Area	\$70/yd Allowance	Upholstered, Single Textile Seat & Back / Modern White Solid Surface Arm Caps	Stone Powder Coat Frame	Powder coat exposed metal, Clean-Thru Design		12		0
C02	OFS - Carolina	Harpin Counter Height Bar Stool	85259-L	Waiting Area	N/A	Wood Veneer 3D Molded Root Walnut Seat & Back	Stone Powder Coat Frame			4		0
C03	Krug	Zola Modular Curve	ZOL3 MCID60D1	Waiting Area	\$70/yd Allowance	Upholstered, Multiple Textiles Seat & Back	Silver Metallic Frame	Double Seat 60 Degree Curve		4		0
C04	OFS	Genus Light Task Chair, Stool	3815-FGR-X9-W48-CHC-TT-PNM-PLST	Staff Areas	N/A	Platinum Plastic Seat	Graphite Frame / Standard Black Nylon Base	Price Soft Wheel Casters, Armless, Counter Height		15		0
C05	OFS	Rowen Bench	83140	Waiting Area	N/A	Oak Super Matte Slats Seat	Stone Powder Coat Frame	Bench, no cushions		7		0
C06	Global	Popcorn	6711	Staff Areas	N/A	Cloud Seat	Chrome Base	Glides		48		0
C07	Cortech	Razorback Chair	86484FG	Patient Areas	N/A	Fog Gray	Fog Gray	Chair Dolly sold seperately		97		0
C08	Norix	Vesta Guest Armless Chair	VA610	Patient Areas	N/A	50/50 Mix of Dove & Sand	50/50 Mix of Dove & Sand	Provide up to 125lbs of sand per piece, exact weight to be determined when piece is demoed and flooring type.		101		0
C08 *Alt.	Cortech	Sentinel Armless Chair	116484SGS	Patient Areas	N/A	Stone Gray	Stone Gray	w/ Access Door, Provide up to 125lbs of sand per piece, exact weight to be determined when piece is demoed and flooring type.				
C09a	Pineapple	Ryno Dining Chair	1RYD-00	Patient Areas	N/A	Dusty Blue	Dusty Blue	Provide up to 125lbs of sand per piece, exact weight to be determined when piece is demoed and flooring type.		100		0
C09a *Alt.	Stance HC	Flo Dining Chair	FLC121A	Patient Areas	N/A	Dusty Blue	Dusty Blue	Provide up to 125lbs of sand per piece, exact weight to be determined when piece is demoed and flooring type.				
C09b	Pineapple	Ryno Dining Chair	1RYD-00	Patient Areas	N/A	Cool Green	Cool Green	Provide up to 125lbs of sand per piece, exact weight to be determined when piece is demoed and flooring type.		101		0
C09b *Alt.	Stance HC	Flo Dining Chair	FLC121A	Patient Areas	N/A	Sage Green	Sage Green	Provide up to 125lbs of sand per piece, exact weight to be determined when piece is demoed and flooring type.				
C10a	Norix	RockSmart Rocker	RA18	Patient Areas	N/A	Twilight	Twilight	Not weighted		20		0
C10b	Norix	RockSmart Rocker	RA18	Patient Areas	N/A	Sage	Sage	Not weighted		20		0
C11	Cortech	Sentinel Armless Chair	116484SGS	Patient Areas	N/A	Stone Gray	Stone Gray	w/ Access Door, Provide up to 125lbs of sand per piece, exact weight to be determined when piece is demoed and flooring type.		24		0

C11 *Alt.	Stance HC	Frontier Armless Chair	FRC121A	Patient Areas	N/A	Chateau Grey	Chateau Grey	Provide up to 125lbs of sand per piece, exact weight to be determined when piece is demoed and flooring type.					
C11 *Alt.	Pineapple	Ryno Lounge Chair	1RYL-00	Patient Areas	N/A	Moonwalk Gray	Moonwalk Gray	Provide up to 125lbs of sand per piece, exact weight to be determined when piece is demoed and flooring type.					
C12	Norix	Hondo Nuevo Stool	HN840.HN850	Patient Areas	N/A	Dove	Dove	Provide up to 125lbs of sand per piece, exact weight to be determined when piece is demoed and flooring type.		8		0	
C12 *Alt.	Cortech	Endruance Stool	7901SG	Patient Areas	N/A	Stone Gray	Stone Gray	Provide up to 125lbs of sand per piece, exact weight to be determined when piece is demoed and flooring type.					
C13	OFS - Carolina	Mention Rocker & Ottoman	F81146-C8Z & F81091-C8Z	Staff Areas	\$70/yd Allowance	Upholstered, Single Textile Seat & Back	Root Rocker Base	Rocker Style Base for Chair & Ottoman		8		0	
C14	Norix	Vesta Lounge Armless	VA610	Patient Areas	N/A	Dove	Dove	Provide up to 125lbs of sand per piece, exact weight to be determined when piece is demoed and flooring type.		3		0	
C15	Norix	Coupe Lounge Chair	CP10	Patient Areas	N/A	Sand	Sand	Provide up to 125lbs of sand per piece, exact weight to be determined when piece is demoed and flooring type.		40		0	
C15 *Alt.	Stance HC	Flo Lounge Chair	FLL124	Patient Areas	N/A	Chateau Grey	Chateau Grey	Provide up to 125lbs of sand per piece, exact weight to be determined when piece is demoed and flooring type.					
C15 *Alt.	Pineapple	Ryno Tub Chair	1RYU-00	Patient Areas	N/A	Moonwalk Gray	Moonwalk Gray	Provide up to 125lbs of sand per piece, exact weight to be determined when piece is demoed and flooring type.					
C16	OFS	Genus Task Chair, Arms	3607M – CR13 – PCB – STT8 – SS3 – ALB5 – TT – W49	Staff Areas		Brisa UltraFabric Upholstery, Single Textile	Mesh Back, Upholstered Seat	Black Frame	Height adjustable arms, Lumbar Support, seat slider, Price Soft Wheel Casters		198		0
C17	OFS	Genus Task Chair, Armless	3607M – X9 – X9 – STT8 – SS3 – ALB5 – TT – W49	Staff Areas		Brisa UltraFabric Upholstery, Single Textile	Mesh Back, Upholstered Seat	Black Frame	Armless, Lumbar Support, seat slider, Price Soft Wheel Casters		30		0
C18	OFS	Flexxy Multi Use Chair	160372-B6K	Staff Areas		Brisa UltraFabric Upholstery, Single Textile	Mesh Back, Upholstered Seat	Steel Powder Coated Base Frame	Arms, Stackable/Nesting, Price Soft Wheel Casters. Price should include Chair Storage Cart appropriate for chair selection.		165		0
C18 *Alt.	AIS	Stow Multipurpose	6800	Staff Areas		Brisa UltraFabric Upholstery, Single Textile	Grey/Black Mesh Back, Upholstered Seat	Steel Grey Frame	Arms, Stackable/Nesting, Price Soft Wheel Casters. Price should include Chair Storage Cart appropriate for chair selection.				

C18 *Alt.	AMQ	Tizu Multi Use Chair	TIZUNEST	Staff Areas	Brisa UltraFabric Upholstery, Single Textile	Mesh Back, Upholstered Seat	White Frame / Platinum Base	Arms, Stackable/Nesting, Price Soft Wheel Casters. Price should include Chair Storage Cart appropriate for chair selection.				
C18 *Alt.	KI	Limelite Nesting Chair	LL2111	Staff Areas	Brisa UltraFabric Upholstery, Single Textile	Light Tone Poly Back, Upholstered Seat	Warm Gray Frame	Arms, Stackable/Nesting, Price Soft Wheel Casters. Price should include Chair Storage Cart appropriate for chair selection.				
C18a	*Vendor Suggested	Dolly	-	Staff Areas	N/A	-	-	Dolly for C18 chairs		5		
D01a	Herman Miller - Knoll	LEV Height Adjustable Desk	LVTRR7029N - LVBCEN30GS	Staff Areas	N/A	Light Ash Rectangular C-Leg Top	Studio White Base	70"W x 30"D		6		0
D01b	Herman Miller - Knoll	LEV Height Adjustable Desk	LVTRR6429N - LVBCEN30GS	Staff Areas	N/A	Light Ash Rectangular C-Leg Top	Studio White Base	64"W x 30"D		38		0
D01c	Herman Miller - Knoll	LEV Height Adjustable Desk	LVTRR5229N - LVBCEN30GS	Staff Areas	N/A	Light Ash Rectangular C-Leg Top	Studio White Base	52"W x 30"D		84		0
D01d	Herman Miller - Knoll	LEV Height Adjustable Desk	LVTRR4629N - LVBCEN30GS	Staff Areas	N/A	Light Ash Rectangular C-Leg Top	Studio White Base	46"Wx30"D		8		0
D02	Herman Miller - Knoll	Anchor Doublewide Pedestal Open w/ Shelf, Doublewide Pedestal File/File, Doublewide Pedestal Top	WP2830OSL, WP2836FFL(N), WPT6620L	Staff Areas	N/A	N/A	Light Ash Door Panel, Studio White Base	66"W x 20"D, 28"H, Floor Flush Base		86		0
F01a	Herman Miller - Knoll	Anchor Wall Mounted Overheads	Sliding Door	Staff Areas	N/A	N/A	Light Ash Door Panel, Studio White Base	48"W, wall Mounted W/ Door, Include Tack Fabric on Dividend Horizon Panels and Under Lighting		94		0
F01b	Herman Miller - Knoll	Anchor Wall Mounted Overheads	Sliding Door	Staff Areas	N/A	N/A	Light Ash Door Panel, Studio White Base	72"W, wall Mounted W/ Door, Include Tack Fabric on Dividend Horizon Panels and Under Lighting		6		0
F02	Haworth	Masters Series Wardrobe with Open Unit	X5W6-1936	Staff Areas	N/A	Patterned Linen Crisp H-P3 w/ Solid Edgeband	N/A	36"W X 19"D X 69"H, X4W5-WL		6		0
F03	Herman Miller - Knoll	Anchor Box/File	WPM2416BFL(N)	Staff Areas	N/A	Light Ash Top	Studio White Base, Dark Gray Pulls	14"x 23"x 20", add standard key lock to all.		39		0
F04	Herman Miller - Knoll	Lateral File Series 2 Generation 2024	2DSF55142CCCL	Staff Areas	N/A	Light Ash Top	Studio White Base, Dark Gray Pulls	41"x 19"x 51", Recessed Pull, Locking		2		0
L01	OFS	Layer Teacher Station	ED1-6628TDR	Staff Areas	N/A	Frosty White Worksurface Finish & Lectern Top Finish	Timber Chassis, Luster Grey Base	Lectern, 66"W x 28"D x 43.75"H, Soft Locking Casters		1		0
P01a	Tournesol	Wilshire Rectangular Planter w/ Toe Kick	WCR-602418	Waiting Area	N/A	N/A	Puddle FRP	24"W x 60"L x 18"H, Provide Saucer under Drain Holes & Irrigation system for low maintenance plants (Snake Plants, Etc.)		3		0
P01b	Tournesol	Wilshire Rectangular Planter w/ Toe Kick	WCR-482418	Waiting Area	N/A	N/A	Puddle FRP	24"W x 48"L x 18"H, Provide Saucer under Drain Holes & Irrigation system for low maintenance plants (Snake Plants, Etc.)		1		0
T01	Stance	Resilia Drum Table	REDT30D16	Waiting Area	N/A	Glacier White Corian Top	Desert Sand Marmoleum / Smooth Silver Base	30"W x 30"D x 16"H Drum Table w/ Plinth Base		4		0

T02	Kimball	Configuration Tables	CCST3060RT	Staff Areas	N/A	Chai Woodgrain Top & Rims	Platinum Metallic Base	30"H, 30"x60", Column Legs w/ Glides		13		0
T03a	AIS	Calibrate Conference Table	X-CTR48102R	Staff Areas	N/A	Summer Drops Top, Rectangular Style Conference Top	Summer Drops Edge / Storm Base	30"H x 48"D x 102"L, Power Option H, Grain Direction Long		2		0
T03b	AIS	Calibrate Conference Table	X-CTR4272R	Staff Areas	N/A	Summer Drops Top, Rectangular Style Conference Top	Summer Drops Edge / Storm Base	30"H x 42"D x 72"L, Power Option E, Grain Direction Long		4		0
T04	AIS	Calibrate Conference Table	X-CTR48120R	Staff Areas	N/A	Summer Drops Top, Rectangular Style Conference Top	Summer Drops Edge / Storm Base	30"H x 48"D x 120"L, Power Option H, Grain Direction Long		1		0
T05	AIS	U-Shaped Conference Table	See T06a	Staff Areas	N/A	Refer to T06a for Finish Information	Refer to T06a for Finish Information	Provide Ganging and Daisy Chain Power; Connect 4 T06a tables together per furniture plan layout.		4		0
T06a	AIS	Day-to-Day Training / Flip Top Tables	T-RCR247229FLCP	Staff Areas	N/A	Chalk Top	Chalk Edge / Metallic Silver Base	72"L x 24"D x 29"H Flip Top on Casters, Line 1 w/ Modesty Panels, Price for Soft Casters		5		0
T06b	AIS	Day-to-Day Training / Flip Top Tables	T-RCR244829FLCP	Staff Areas	N/A	Chalk Top	Chalk Edge / Metallic Silver Base	48"L x 24" D x 29"H Flip Top on Casters, Line 1 w/ Modesty Panels, Price for Soft Casters		4		0
T06c	AIS	Day-to-Day Training / Flip Top Tables	T-RCR306029FLCP	Staff Areas	N/A	Chalk Top	Chalk Edge / Metallic Silver Base	60"L x 30" D x 29"H Flip Top on Casters, Line 1 w/ Modesty Panels, Price for Soft Casters		2		0
T07	OFS - Carolina	Modern Amenity Round Table	310-22RD	Staff Areas	N/A	Crystal Ice Top	Root Base	22" diameter side table		9		0
T08	Norix	Leg Style 4-Leg Rectangular Table	LS3072	Patient Areas	N/A	Palisades Oak Top	2.5" Metallic Silver Frame	30"H, 30"x72", Steel to Steel Connections w/ Tamp Resistant Screws		34		0
T09a	Stance HC	Flo Round Table	FLTR48-U	Patient Areas	N/A	Sand Top	Chateau Gray Base & Edge	48" diameter, round table - Provide up to 125lbs of sand per piece, exact weight to be determined when piece is demoed and flooring type.		23		0
T09a *Alt.	Norix	Forte Cafe Table	CA4800	Patient Areas	N/A	Palisades Oak Top	Dove Base & Edge	48" diameter, round table - Provide up to 125lbs of sand per piece, exact weight to be determined when piece is demoed and flooring type.				
T09b	Stance HC	Flo Round Table	FLTR42-U	Patient Areas	N/A	Sand Top	Chateau Gray Base & Edge	42" diameter, round table - Provide up to 125lbs of sand per piece, exact weight to be determined when piece is demoed and flooring type.		24		0
T09b *Alt.	Norix	Forte Cafe Table	CA4200	Patient Areas	N/A	Palisades Oak Top	Dove Base & Edge	42" diameter, round table - Provide up to 125lbs of sand per piece, exact weight to be determined when piece is demoed and flooring type.				
T10a	Stance	Resilia Drum Table	REDT36D16X	Patient Areas	N/A	Glacier White Corian Top	Desert Sand Marmoleum / Smooth Silver Base	36" diameter, no metal base		16		0







