



**Sedgwick County**



**EMS**

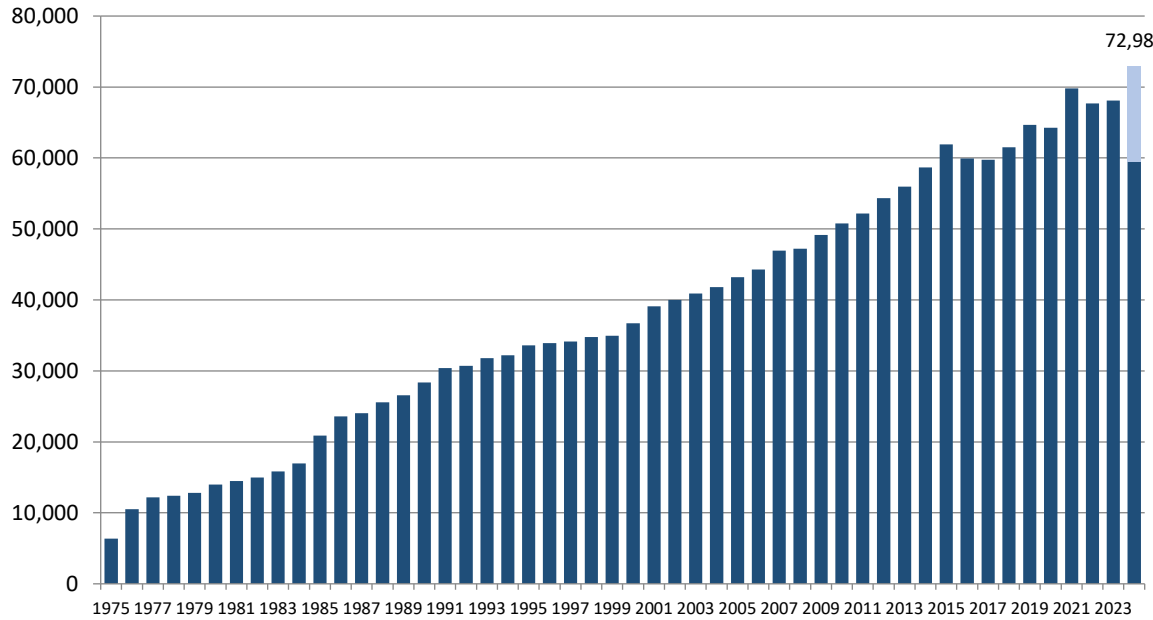


# Monthly Operations Report October 2024

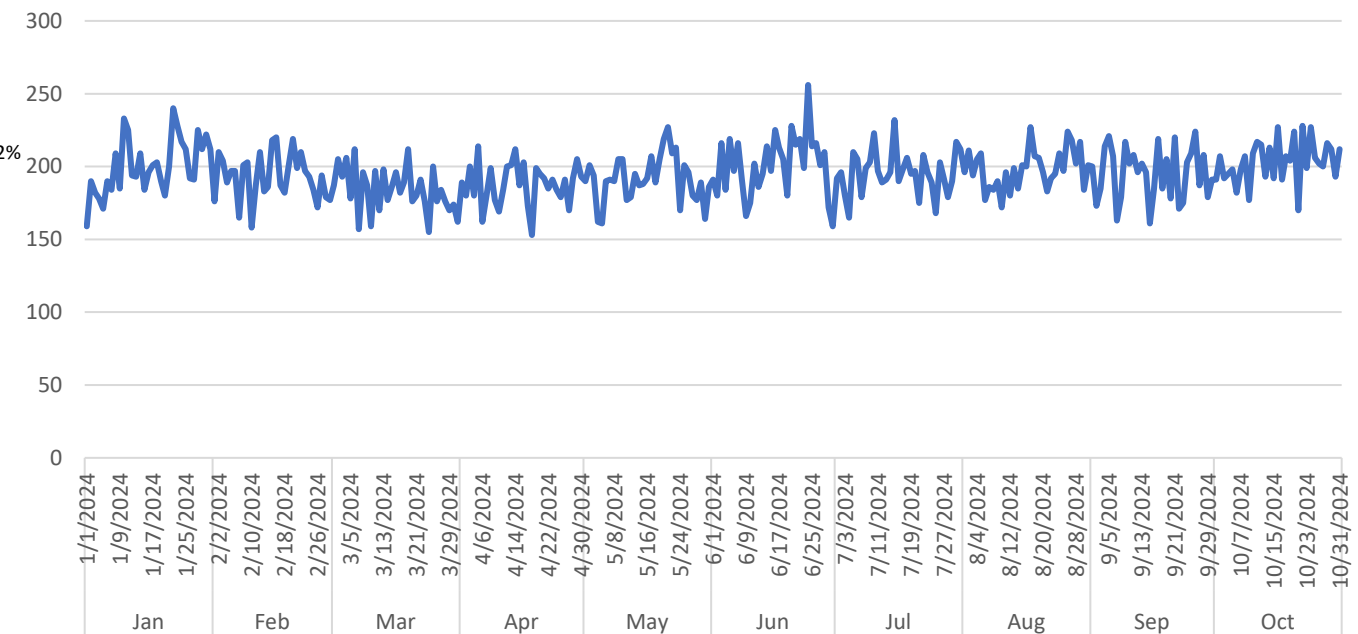
Prepared by Victor Okwo  
EMS Systems & Chief Data Officer  
November 16, 2024

# Call Volume & Response Time

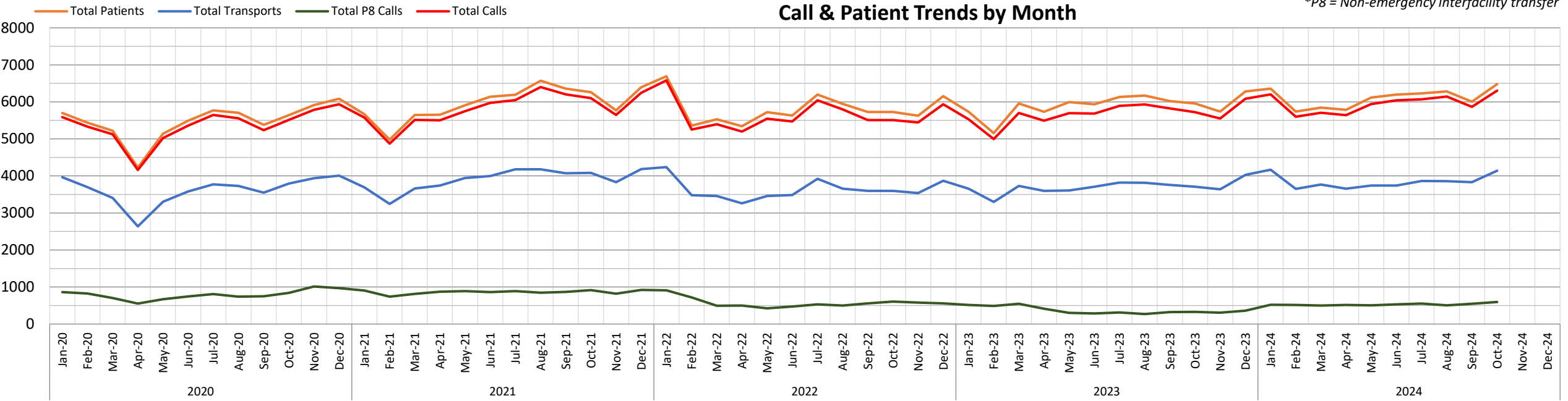
### Annual Call Volume



### Calls by Day



### Call & Patient Trends by Month

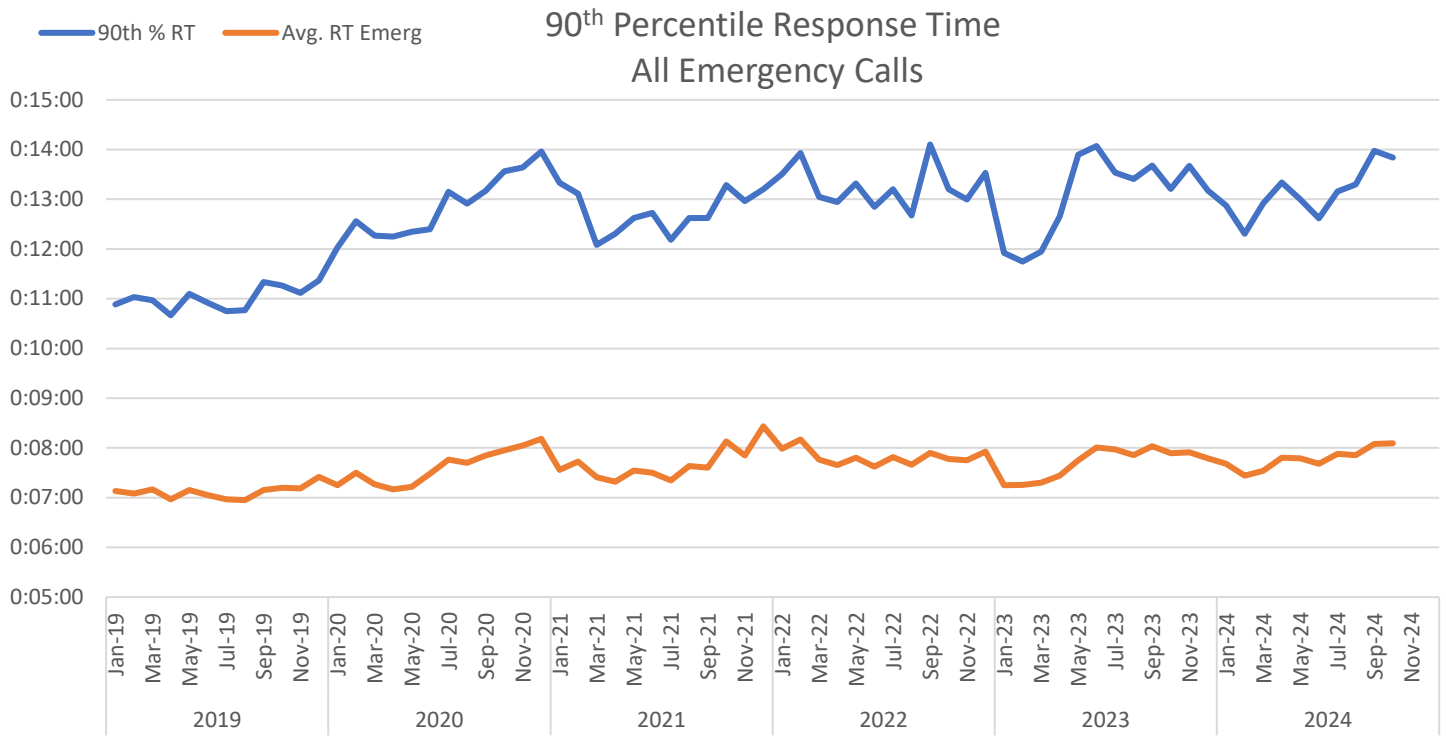


All Calls			Valid Calls			Transports				Non-Emergency		
Row Labels	Count of Call #	Avg/Day	Row Labels	Count of Call #		Row Labels	Count of Call #	Txport %	Txport Valid %	Row Labels	Count of Call #	Avg/Day
Jan	6204	200	Jan	5416	87.3%	Jan	4165	67.1%	76.9%	Jan	522	17
Feb	5598	193	Feb	4954	88.5%	Feb	3650	65.2%	73.7%	Feb	516	18
Mar	5707	184	Mar	5048	88.5%	Mar	3768	66.0%	74.6%	Mar	501	16
Apr	5639	188	Apr	4976	88.2%	Apr	3653	64.8%	73.4%	Apr	515	17
May	5939	192	May	5165	87.0%	May	3743	63.0%	72.5%	May	503	16
Jun	6040	201	Jun	5222	86.5%	Jun	3743	62.0%	71.7%	Jun	531	18
Jul	6070	196	Jul	5273	86.9%	Jul	3864	63.7%	73.3%	Jul	554	18
Aug	6143	198	Aug	5330	86.8%	Aug	3859	62.8%	72.4%	Aug	502	16
Sept	5863	195	Sept	5096	86.9%	Sept	3831	65.3%	75.2%	Sept	549	18
Oct	6303	203	Oct	5467	86.7%	Oct	4139	65.7%	75.7%	Oct	595	19
Nov			Nov			Nov				Nov		
<b>Grand Total</b>	<b>59504</b>	<b>195</b>	<b>Grand Total</b>	<b>51946</b>	<b>87.3%</b>	<b>Grand Total</b>	<b>38415</b>	<b>64.6%</b>	<b>74%</b>	<b>Grand Total</b>	<b>5288</b>	<b>17</b>

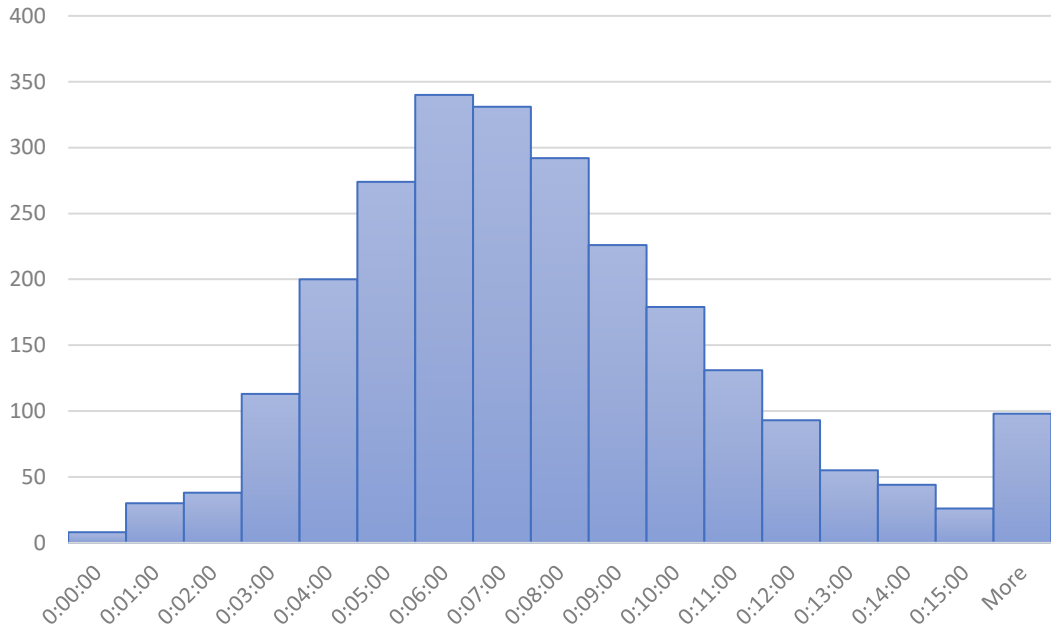
CRV		
Row Labels	Count of Call #	Avg/Day
Jan	18	0.6
Feb	11	0.4
Mar	17	0.5
Apr	16	0.5
May	11	0.4
Jun	19	0.6
Jul	19	0.6
Aug	19	0.6
Sept	23	0.8
Oct	12	0.4
Nov		
<b>Grand Total</b>	<b>165</b>	<b>0.5</b>

RT All Calls		
	Average of RT	90th %
Jan	0:07:46	0:15:55
Feb	0:07:25	0:13:11
Mar	0:07:34	0:13:24
Apr	0:07:48	0:14:02
May	0:07:47	0:13:50
Jun	0:07:52	0:14:37
Jul	0:07:52	0:13:44
Aug	0:07:49	0:13:37
Sept	0:07:57	0:14:02
Oct	0:08:04	0:14:37
Nov		
<b>Grand Total</b>	<b>0:07:47</b>	<b>0:14:01</b>

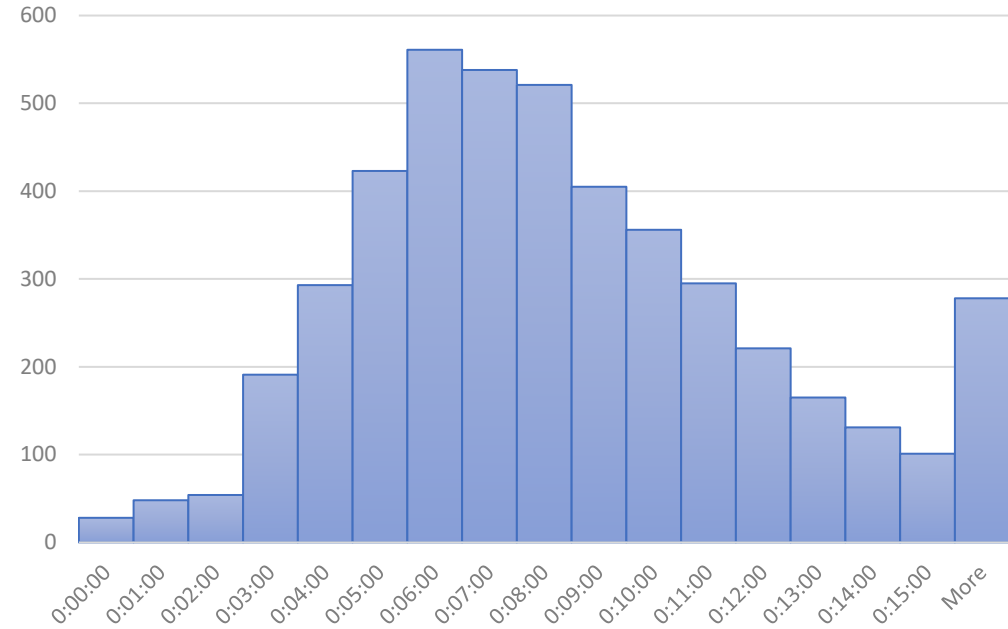
RT P1 & P2 (Lights & Sirens)		
	Average of RT	90th %
Jan	0:07:01	0:11:36
Feb	0:06:49	0:11:02
Mar	0:06:54	0:11:51
Apr	0:07:12	0:12:25
May	0:07:01	0:11:32
Jun	0:07:10	0:11:20
Jul	0:07:08	0:11:51
Aug	0:07:12	0:12:07
Sept	0:07:20	0:12:04
Oct	0:07:20	0:12:33
Nov		
<b>Grand Total</b>	<b>0:07:06</b>	<b>0:11:51</b>



**P1 - 2 Response Time (RT), October 2024**



**Emergency Call RT, October 2024**



P1-P2 = Emergency, lights & sirens response  
 P3-P6 = Emergency, no lights & sirens response

"More" includes times where units stand-off due to scene safety

Response times (RT) are measured from dispatch to arrival on scene. EMS responds to calls using lights and sirens on Priority 1 and 2 emergency calls only, which was 55% of emergency calls in October.

# Staffing & Workload

Scheduled Unit Hours = 12,648

Produced Unit Hours = 11,415 (90.3%)

# Sedgwick County EMS Resource Deployment Schedule

revised December 7, 2020; updated 8/13/2023

		Unit	Post	Sunday		Monday		Tuesday		Wednesday		Thursday		Friday		Sunday	
<b>Ambulance</b>		<b>21</b>	11														
		<b>22</b>	12														
		<b>26</b>	14														
		<b>27</b>	16														
		<b>31</b>	20														
		<b>32</b>	2														
		<b>33</b>	3	0600-1800	1800-0600	0600-1800	1800-0600	0600-1800	1800-0600	0600-1800	1800-0600	0600-1800	1800-0600	0600-1800	1800-0600	0600-1800	1800-0600
		<b>34</b>	4														
		<b>35</b>	5														
		<b>36</b>	6														
		<b>37</b>	7														
		<b>38</b>	8														
		<b>39</b>	9														
	<b>23</b>	10	0900-2100		0900-2100		0900-2100		0900-2100		0900-2100		0900-2100		0900-2100		
	<b>25</b>	45	0900-2100		0900-2100		0900-2100		0900-2100		0900-2100		0900-2100		0900-2100		
	<b>42</b>	14	0900-2100		0900-2100		0900-2100		0900-2100		0900-2100		0900-2100		0900-2100		
	<b>29</b>	5	1200-0000		1200-0000		1200-0000		1200-0000		1200-0000		1200-0000		1200-0000		
	<b>41</b>	15	1200-0000		1200-0000		1200-0000		1200-0000		1200-0000		1200-0000		1200-0000		
	<b>28</b>	10	1500-0300		1500-0300		1500-0300		1500-0300		1500-0300		1500-0300		1500-0300		
	<b>45 (surge)</b>	20	Varies		Varies		Varies		Varies		Varies		Varies		Varies		
<b>DC</b>	<b>1</b>	3	0600-1800	1800-0600	0600-1800	1800-0600	0600-1800	1800-0600	0600-1800	1800-0600	0600-1800	1800-0600	0600-1800	1800-0600	0600-1800	1800-0600	
	<b>2</b>	5	0600-1800	1800-0600	0600-1800	1800-0600	0600-1800	1800-0600	0600-1800	1800-0600	0600-1800	1800-0600	0600-1800	1800-0600	0600-1800	1800-0600	
	<b>3</b>	10	1000-2200		1000-2200		1000-2200		1000-2200		1000-2200		1000-2200		1000-2200		
<b>CRV</b>	<b>81</b>	81	0600 - 1800		0600 - 1800		0600 - 1800		0600 - 1800		0600 - 1800		0600 - 1800		0600 - 1800		
	<b>82</b>	B1 → 82	0600 - 1800		0600 - 1800		0600 - 1800		0600 - 1800		0600 - 1800		0600 - 1800		0600 - 1800		

DC = District Chief

CRV = Community Response Vehicle



ALS First Response Vehicle Uptime			
	CRV 81 (Clearwater)	CRV 82 (Cheney)	Ambulances
Hours Scheduled	372	372	12,648
Hours staffed	280.5	287	11,415
Percentage staffed	75%	77%	91%

Monthly Unit On Duty %

