



Sedgwick County



EMS

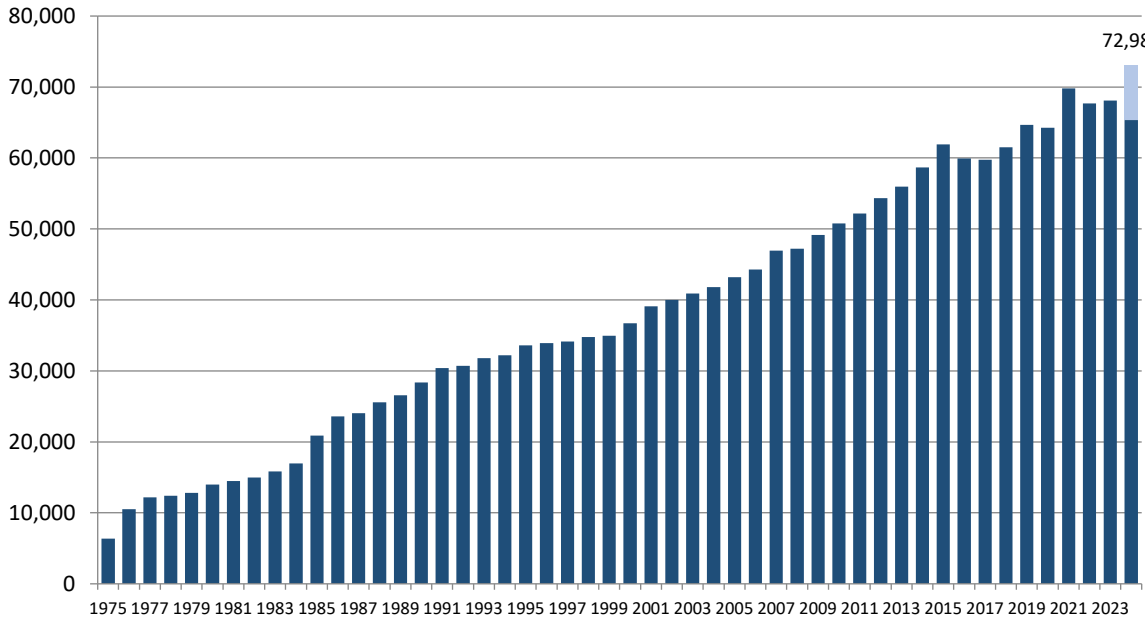


Monthly Operations Report November 2024

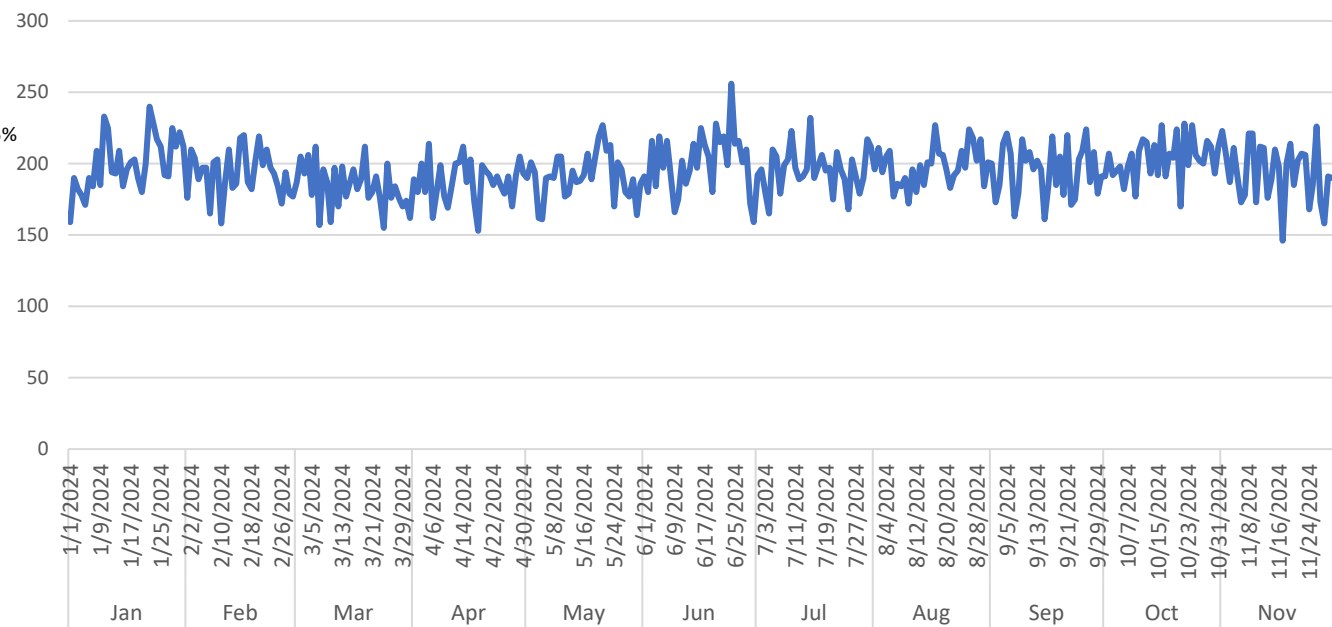
Prepared by Victor Okwo
EMS Systems & Chief Data Officer
December 16, 2024

Call Volume & Response Time

Annual Call Volume

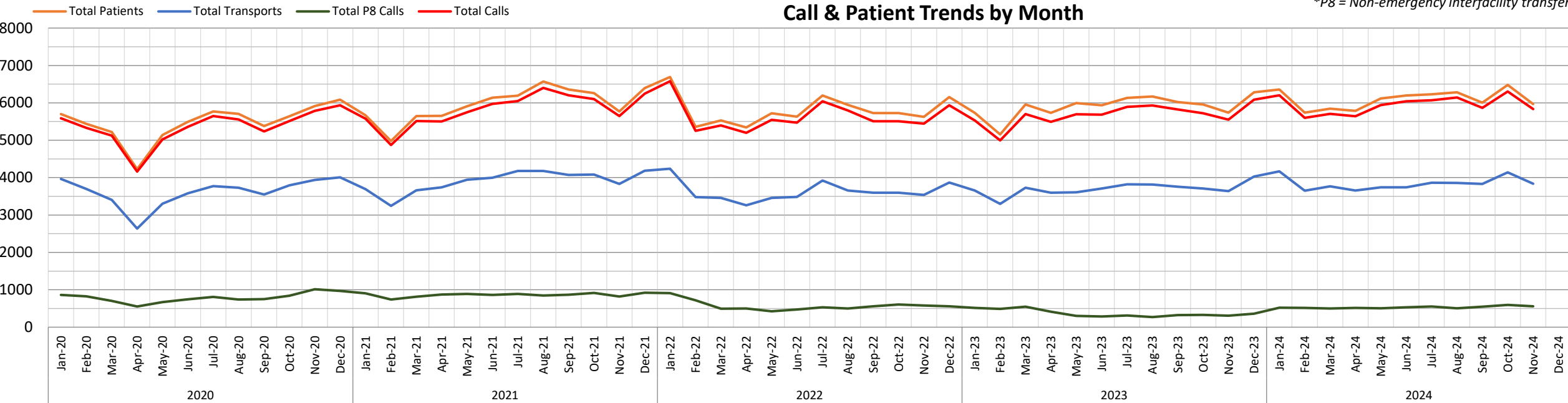


Calls by Day



Call & Patient Trends by Month

*P8 = Non-emergency interfacility transfer

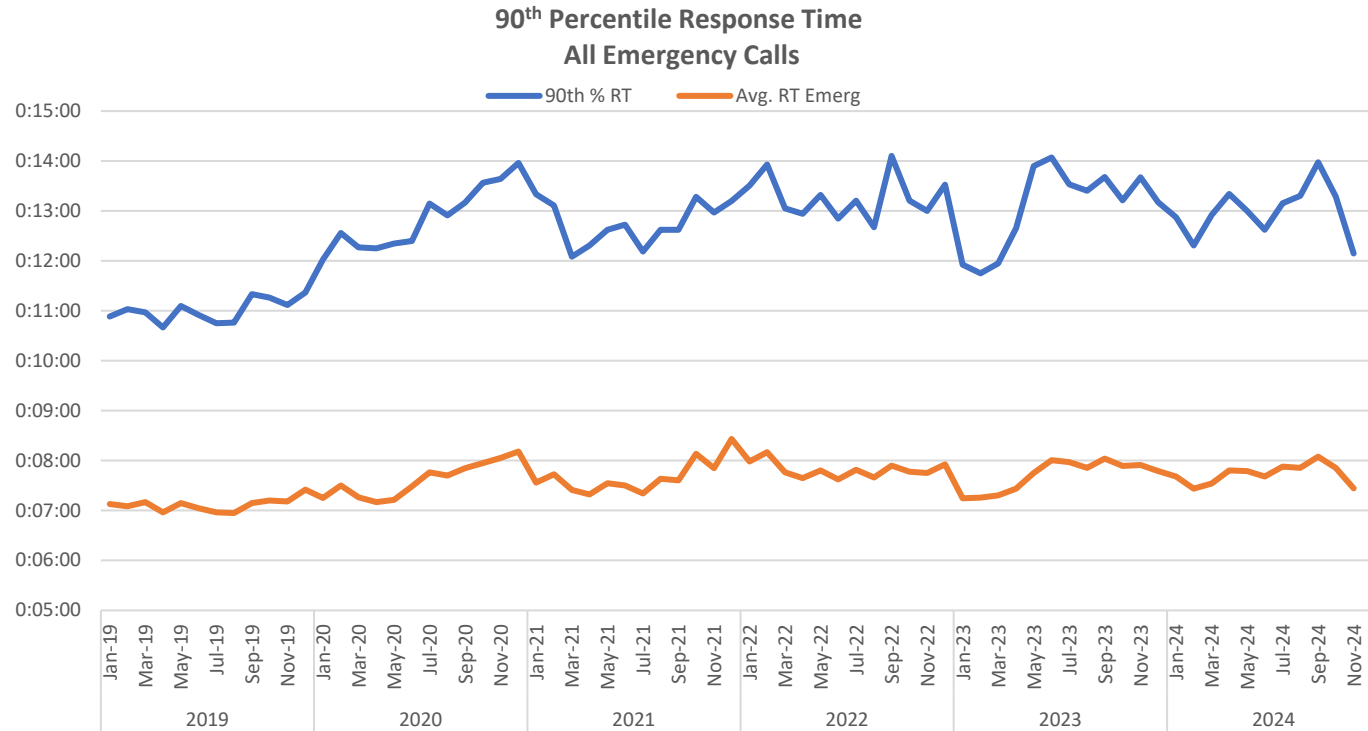


All Calls			Valid Calls			Transports				Non-Emergency		
Row Labels	Count of Call #	Avg/Day	Row Labels	Count of Call #		Row Labels	Count of Call #	Txport %	Txport Valid %	Row Labels	Count of Call #	Avg/Day
Jan	6204	200	Jan	5416	87.3%	Jan	4165	67.1%	76.9%	Jan	522	17
Feb	5598	193	Feb	4954	88.5%	Feb	3650	65.2%	73.7%	Feb	516	18
Mar	5707	184	Mar	5048	88.5%	Mar	3768	66.0%	74.6%	Mar	501	16
Apr	5639	188	Apr	4976	88.2%	Apr	3653	64.8%	73.4%	Apr	515	17
May	5939	192	May	5165	87.0%	May	3743	63.0%	72.5%	May	503	16
Jun	6040	201	Jun	5222	86.5%	Jun	3743	62.0%	71.7%	Jun	531	18
Jul	6070	196	Jul	5273	86.9%	Jul	3864	63.7%	73.3%	Jul	554	18
Aug	6143	198	Aug	5330	86.8%	Aug	3859	62.8%	72.4%	Aug	502	16
Sept	5863	195	Sept	5096	86.9%	Sept	3831	65.3%	75.2%	Sept	549	18
Oct	6303	203	Oct	5467	86.7%	Oct	4139	65.7%	75.7%	Oct	595	19
Nov	5832	194	Nov	5099	87.4%	Nov	3836	65.8%	75.2%	Nov	556	19
Grand Total	65335	195	Grand Total	57044	87.3%	Grand Total	42251	64.7%	74.1%	Grand Total	5844	17

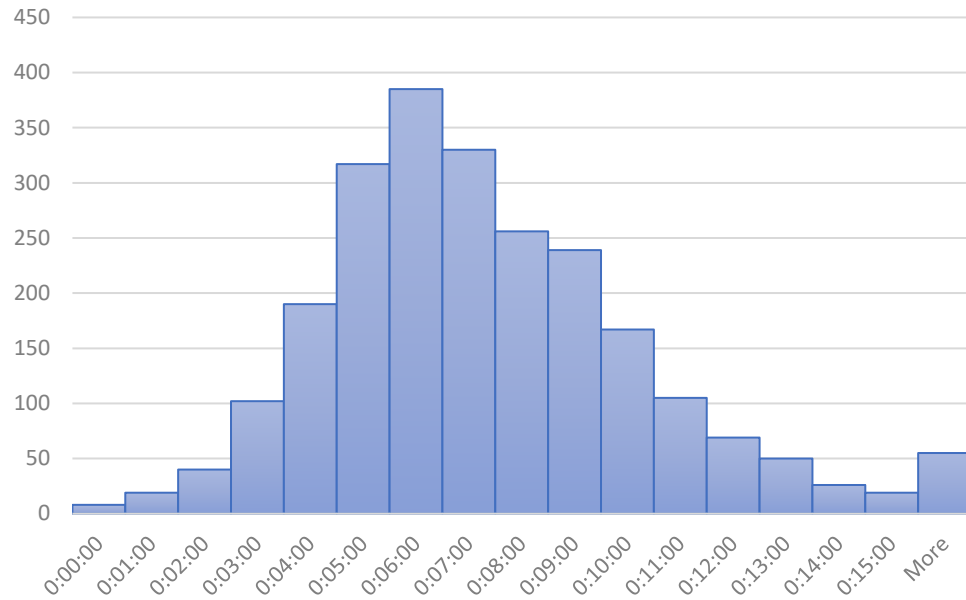
CRV		
Row Labels	Count of Call #	Avg/Day
Jan	18	0.6
Feb	11	0.4
Mar	17	0.5
Apr	16	0.5
May	11	0.4
Jun	19	0.6
Jul	19	0.6
Aug	19	0.6
Sept	23	0.8
Oct	12	0.4
Nov	20	0.7
Grand Total	185	0.6

RT All Calls		
	Average of RT	90th %
Jan	0:07:46	0:15:55
Feb	0:07:25	0:13:11
Mar	0:07:34	0:13:24
Apr	0:07:48	0:14:02
May	0:07:47	0:13:50
Jun	0:07:41	0:13:21
Jul	0:07:52	0:13:44
Aug	0:07:49	0:13:37
Sept	0:07:57	0:14:02
Oct	0:07:50	0:14:02
Nov	0:07:24	0:12:42
Grand Total	0:07:43	0:13:51

RT P1 & P2 (Lights & Sirens)		
	Average of RT	90th %
Jan	0:07:01	0:11:36
Feb	0:06:49	0:11:02
Mar	0:06:54	0:11:51
Apr	0:07:12	0:12:25
May	0:07:01	0:11:32
Jun	0:07:03	0:11:20
Jul	0:07:08	0:11:51
Aug	0:07:12	0:12:07
Sept	0:07:20	0:12:04
Oct	0:07:09	0:12:03
Nov	0:06:52	0:11:00
Grand Total	0:07:04	0:11:44

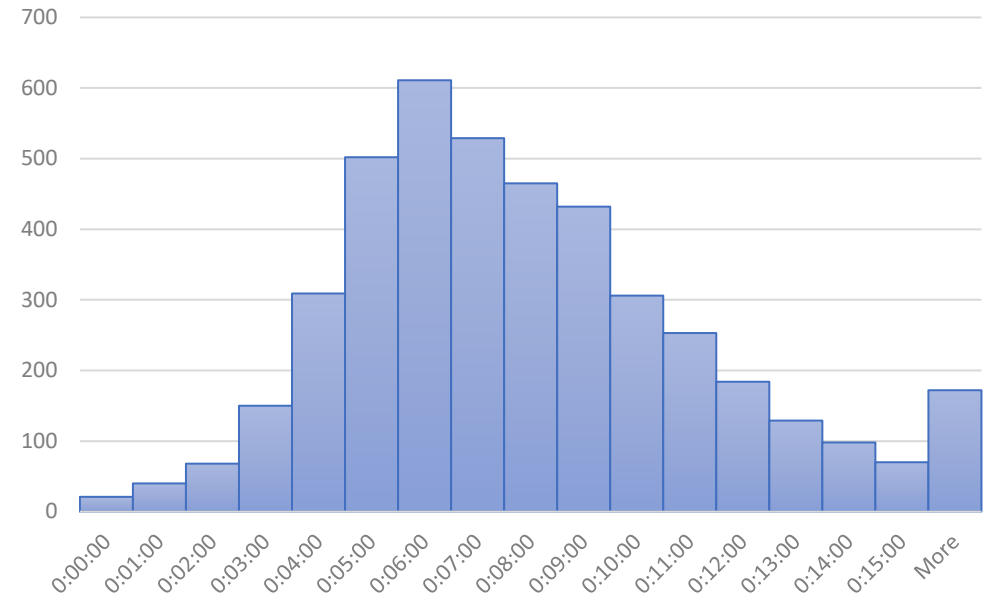


P1 - 2 Response Time (RT), November 2024



P1-P2 = Emergency, lights & sirens response
 P3-P6 = Emergency, no lights & sirens response

Emergency Call RT, November 2024



"More" includes times where units stand-off due to scene safety

Response times (RT) are measured from dispatch to arrival on scene. EMS responds to calls using lights and sirens on Priority 1 and 2 emergency calls only, which was 55% of emergency calls in November.

Staffing & Workload

Scheduled Unit Hours = 12,240

Produced Unit Hours = 11,465 (94%)

Sedgwick County EMS Resource Deployment Schedule

revised December 7, 2020; updated 8/13/2023

		Unit	Post	Sunday		Monday		Tuesday		Wednesday		Thursday		Friday		Sunday	
Ambulance		21	11														
		22	12														
		26	14														
		27	16														
		31	20														
		32	2														
		33	3	0600-1800	1800-0600	0600-1800	1800-0600	0600-1800	1800-0600	0600-1800	1800-0600	0600-1800	1800-0600	0600-1800	1800-0600	0600-1800	1800-0600
		34	4														
		35	5														
		36	6														
		37	7														
		38	8														
		39	9														
		23	10	0900-2100		0900-2100		0900-2100		0900-2100		0900-2100		0900-2100		0900-2100	
	25	45	0900-2100		0900-2100		0900-2100		0900-2100		0900-2100		0900-2100		0900-2100		
	42	14	0900-2100		0900-2100		0900-2100		0900-2100		0900-2100		0900-2100		0900-2100		
	29	5	1200-0000		1200-0000		1200-0000		1200-0000		1200-0000		1200-0000		1200-0000		
	41	15	1200-0000		1200-0000		1200-0000		1200-0000		1200-0000		1200-0000		1200-0000		
	28	10	1500-0300		1500-0300		1500-0300		1500-0300		1500-0300		1500-0300		1500-0300		
	45 (surge)	20	Varies		Varies		Varies		Varies		Varies		Varies		Varies		
DC	1	3	0600-1800	1800-0600	0600-1800	1800-0600	0600-1800	1800-0600	0600-1800	1800-0600	0600-1800	1800-0600	0600-1800	1800-0600	0600-1800	1800-0600	
	2	5	0600-1800	1800-0600	0600-1800	1800-0600	0600-1800	1800-0600	0600-1800	1800-0600	0600-1800	1800-0600	0600-1800	1800-0600	0600-1800	1800-0600	
	3	10	1000-2200		1000-2200		1000-2200		1000-2200		1000-2200		1000-2200		1000-2200		
CRV	81	81	0600 - 1800		0600 - 1800		0600 - 1800		0600 - 1800		0600 - 1800		0600 - 1800		0600 - 1800		
	82	B1 → 82	0600 - 1800		0600 - 1800		0600 - 1800		0600 - 1800		0600 - 1800		0600 - 1800		0600 - 1800		

DC = District Chief

CRV = Community Response Vehicle

ALS First Response Vehicle Uptime			
	CRV 81 (Clearwater)	CRV 82 (Cheney)	Ambulances
Hours Scheduled	360	360	12,240
Hours staffed	293	297	11,465
Percentage staffed	81%	83%	94%

Monthly Unit On Duty %

