



Sedgwick County



EMS

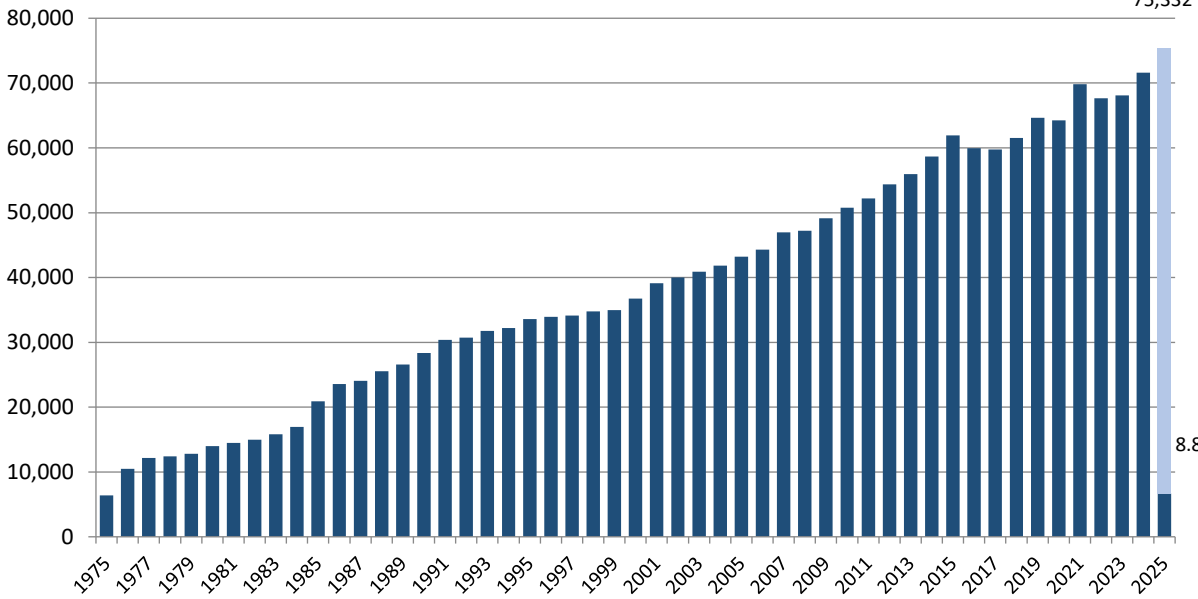


Monthly Operations Report January 2025

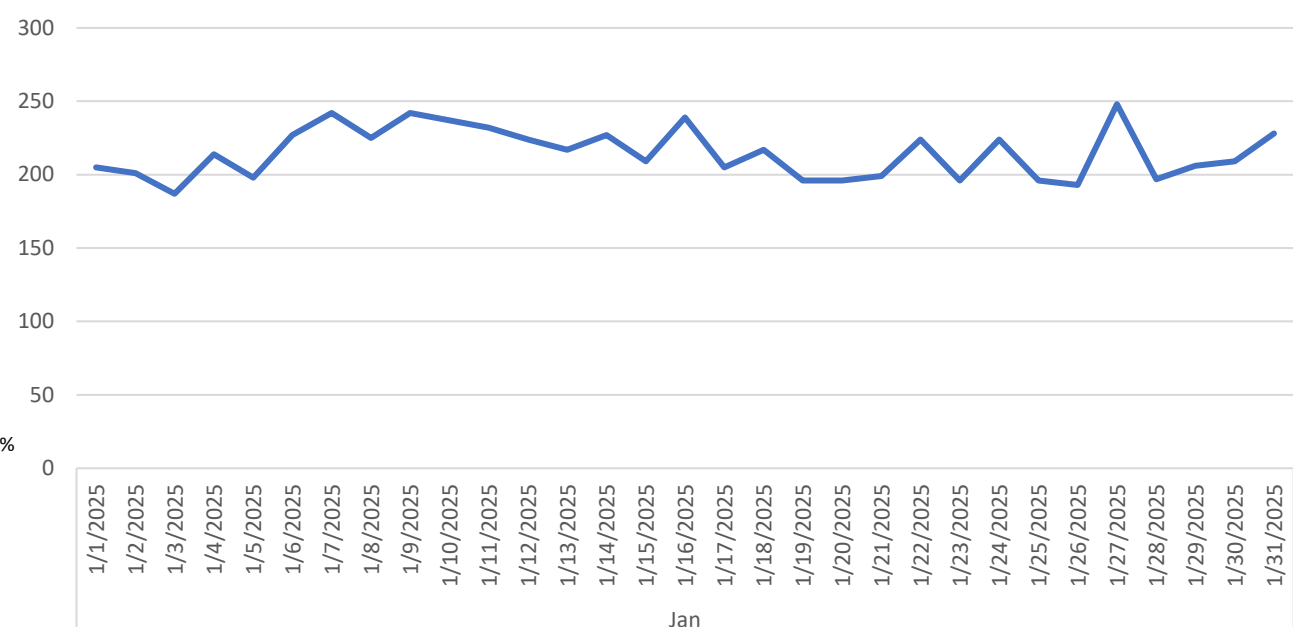
Prepared by Victor Okwo
EMS Systems & Chief Data Officer
January 15, 2025

Call Volume & Response Time

Annual Call Volume

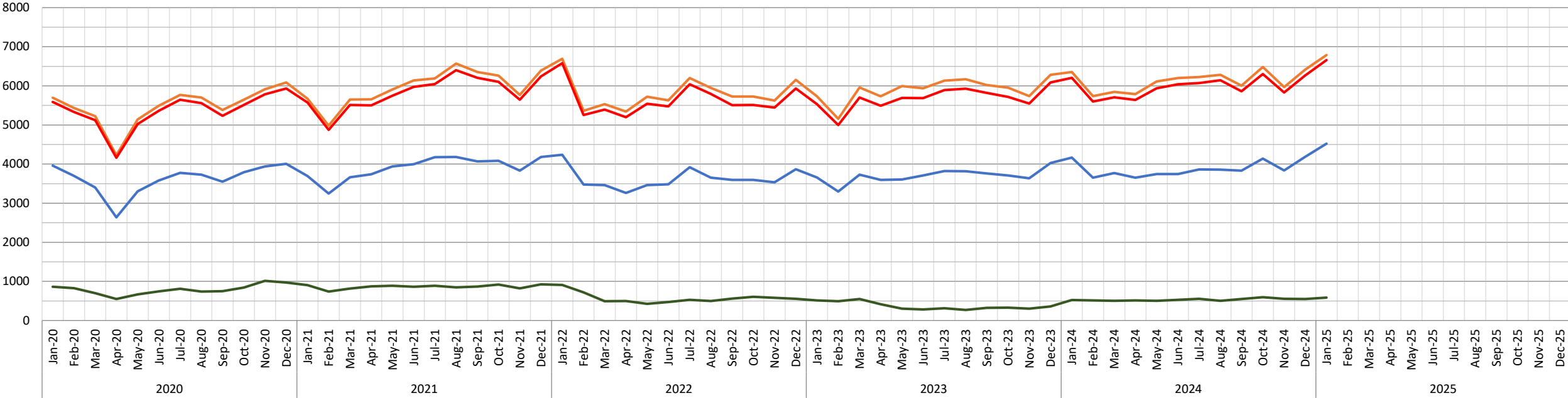


Calls by Day



— Total Charts — Transports — Non-Emerg — Distinct Call Count

Call & Patient Trends by Month

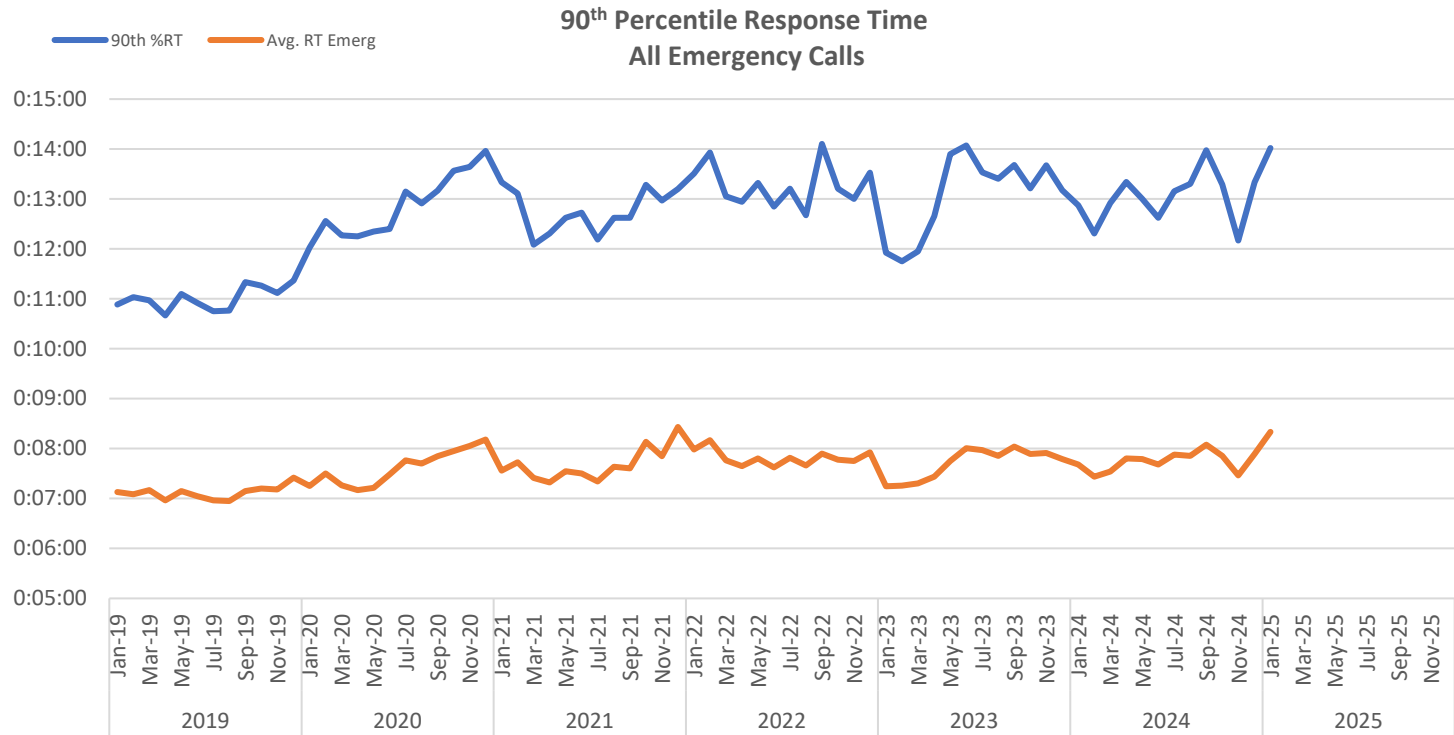


All Calls			Valid Calls			Transports				Non-Emergency		
Row Labels	Count of Call #	Avg/Day	Row Labels	Count of Call #		Row Labels	Count of Call #	Txport %	Txport Valid %	Row Labels	Count of Call #	Avg/Day
Jan	6659	215	Jan	5912	88.8%	Jan	4522	67.9%	76.5%	Jan	583	19
Feb			Feb			Feb				Feb		
Mar			Mar			Mar				Mar		
Apr			Apr			Apr				Apr		
May			May			May				May		
Jun			Jun			Jun				Jun		
Jul			Jul			Jul				Jul		
Aug			Aug			Aug				Aug		
Sept			Sept			Sept				Sept		
Oct			Oct			Oct				Oct		
Nov			Nov			Nov				Nov		
Grand Total			Grand Total			Grand Total				Grand Total		

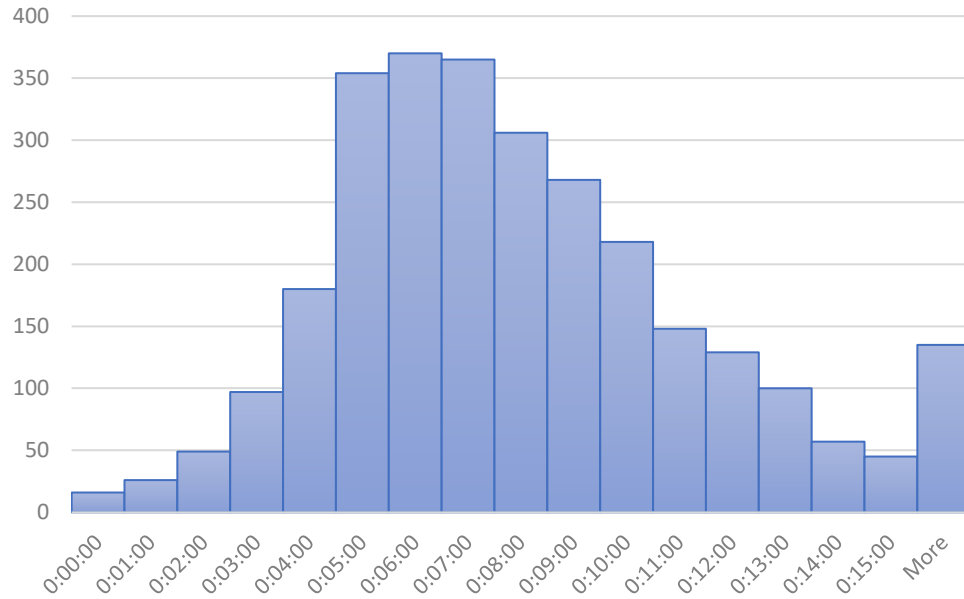
CRV		
Row Labels	Count of Call #	Avg/Day
Jan	31	1
Feb		
Mar		
Apr		
May		
Jun		
Jul		
Aug		
Sept		
Oct		
Nov		
Grand Total		

RT All Calls		
	Average of RT	90th %
Jan	0:08:11	0:14:17
Feb		
Mar		
Apr		
May		
Jun		
Jul		
Aug		
Sept		
Oct		
Nov		
Grand Total		

RT P1 & P2 (Lights & Sirens)		
	Average of RT	90th %
Jan	0:07:38	0:12:42
Feb		
Mar		
Apr		
May		
Jun		
Jul		
Aug		
Sept		
Oct		
Nov		
Grand Total		

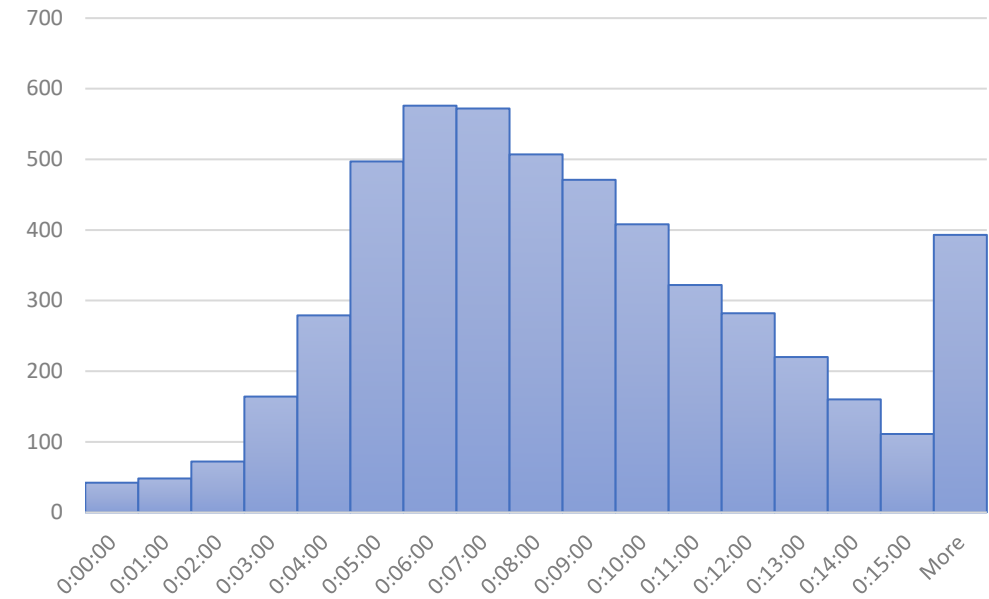


P1 - P2 Response Time (RT), January 2025



P1-P2 = Emergency, lights & sirens response
 P3-P6 = Emergency, no lights & sirens response

P1 - P6 RT, January 2025



"More" includes times where units stand-off due to scene safety

Response times (RT) are measured from dispatch to arrival on scene. EMS responds to calls using lights and sirens on Priority 1 and 2 emergency calls only, which was 57% of emergency calls in January.

Staffing & Workload

Scheduled Unit Hours = 11,745

Produced Unit Hours = 12,648 (93%)

Sedgwick County EMS Resource Deployment Schedule

revised January 2, 2024

	Unit	Post	Sunday		Monday		Tuesday		Wednesday		Thursday		Friday		Sunday	
Ambulance	21	11														
	22	12														
	26	14														
	27	16														
	31	20														
	32	2														
	33	3	0600-1800	1800-0600	0600-1800	1800-0600	0600-1800	1800-0600	0600-1800	1800-0600	0600-1800	1800-0600	0600-1800	1800-0600	0600-1800	1800-0600
	34	4														
	35	5														
	36	6														
	37	7														
	38	8														
	39	9														
		25	45	0800-2000		0800-2000		0800-2000		0800-2000		0800-2000		0800-2000		0800-2000
	29	5	0800-2000		0800-2000		0800-2000		0800-2000		0800-2000		0800-2000		0800-2000	
	42	14	1000-2200		1000-2200		1000-2200		1000-2200		1000-2200		1000-2200		1000-2200	
	43	20	1000-2200		1000-2200		1000-2200		1000-2200		1000-2200		1000-2200		1000-2200	
	23	10	1200-0000		1200-0000		1200-0000		1200-0000		1200-0000		1200-0000		1200-0000	
	41	15	1200-0000		1200-0000		1200-0000		1200-0000		1200-0000		1200-0000		1200-0000	
	28	10	1500-0300		1500-0300		1500-0300		1500-0300		1500-0300		1500-0300		1500-0300	
	24	12	1500-0300		1500-0300		1500-0300		1500-0300		1500-0300		1500-0300		1500-0300	
	45-46 (surge)	20	Varies		Varies		Varies		Varies		Varies		Varies		Varies	
DC	1	3	0600-1800	1800-0600	0600-1800	1800-0600	0600-1800	1800-0600	0600-1800	1800-0600	0600-1800	1800-0600	0600-1800	1800-0600	0600-1800	1800-0600
	2	5	0600-1800	1800-0600	0600-1800	1800-0600	0600-1800	1800-0600	0600-1800	1800-0600	0600-1800	1800-0600	0600-1800	1800-0600	0600-1800	1800-0600
	3	10	1000-2200		1000-2200		1000-2200		1000-2200		1000-2200		1000-2200		1000-2200	
CRV	81	81	0600 - 1800		0600 - 1800		0600 - 1800		0600 - 1800		0600 - 1800		0600 - 1800		0600 - 1800	
	82	B1 → 82	0600 - 1800		0600 - 1800		0600 - 1800		0600 - 1800		0600 - 1800		0600 - 1800		0600 - 1800	
FR	11	B1	Varies		Varies		Varies		Varies		Varies		Varies		Varies	

DC = District Chief
CRV = Community Response Vehicle

ALS First Response Vehicle Uptime			
	CRV 81 (Clearwater)	CRV 82 (Cheney)	Ambulances
Hours Scheduled	372	372	12,648
Hours staffed	348.5	364	11,745
Percentage staffed	94%	98%	93%

Monthly Unit On Duty %

